

# Labour force survey

## March 2003

Co-operation between Statistics South Africa (Stats SA), the citizens of the country, the private sector and government institutions is essential for a successful statistical system. Without continued co-operation and goodwill, the timely release of relevant and reliable official statistics will not be possible.

Stats SA publishes approximately three hundred different releases each year. It is not economically viable to produce them in more than one of South Africa's eleven official languages. Since the releases are used extensively, not only locally, but also by international economic and social-scientific communities, Stats SA releases are published in English only.

**Embargo: 13:00**  
**Date: 23 September 2003**

Published by Statistics South Africa, Private Bag X44, Pretoria 0001

© Statistics South Africa, 2003

Users may apply or process this data, provided Statistics South Africa (Stats SA) is acknowledged as the original source of the data; that it is specified that the application an/or analysis is the result of the user's independent processing of the data; and that neither the basic data nor any reprocessed version or application thereof may be sold or offered for sale in any form whatsoever without prior permission from Stats SA.

Stats SA Library Cataloguing-in-Publication (CIP) Data

**Labour Force Survey March 2003/** Statistics South Africa. Pretoria: Statistics South Africa, 2001

xiv 76 p.

Biannually, No.2

1. Labour supply – Statistics
  2. Labour supply (South Africa)
  3. Unemployment (South Africa)
  4. Informal sector (Economics) – South Africa
  5. Formal sector (Economics) – South Africa
- I. Statistics South Africa  
II. Series  
(LCSH 16)

A complete set of Stats SA publications is available at Stats SA Library and the following libraries:

National Library of South Africa, Pretoria Division  
National Library of South Africa, Cape Town Division  
Library of Parliament, Cape Town  
Bloemfontein Public Library  
Natal Society Library, Pietermaritzburg  
Johannesburg Public Library  
Eastern Cape Library Services, King William's Town  
Central Regional Library, Polokwane  
Central Reference Library, Nelspruit  
Central Reference Collection, Kimberley  
Central Reference Library, Mmabatho

Obtainable from: Printing and Distribution, Statistics South Africa

Tel: (012) 310 8251

Fax: (012) 321 7381

E-mail: [distribution@statssa.gov.za](mailto:distribution@statssa.gov.za)

## CONTENTS

	Page
<b>Introduction</b>	i
<b>The labour market in March 2003</b>	i
<b>Employment in the formal and informal sectors: March 2003</b>	
<i>Employment by sector</i>	iii
<i>Employment by sector and sex</i>	iii
<i>Employment by sector and population group</i>	iv
<i>Employment by main industry and sector</i>	iv
<i>Employment by main occupation</i>	v
<i>Employment and level of education</i>	vi
<i>Comparison of formal employment figures in the LFS and the SEE</i>	vi
<i>Comparison of formal sector employment by industry in the LFS and the SEE of March 2003</i>	vii
<b>Unemployment in March 2003</b>	
<i>Unemployment rate by province (official definition)</i>	viii
<i>Unemployment rate by population group and sex (official definition)</i>	viii
<i>Unemployment rate by highest level of education and population group (official definition)</i>	ix
<i>The pattern of unemployment rates by education level among Africans</i>	ix
<b>Labour market trends: Expanded definition of unemployment</b>	x
<b>Voluntary work</b>	x
<b>Notes</b>	
1. <i>Official and expanded unemployment rates</i>	xi
2. <i>Sample design</i>	xi
3. <i>Coverage</i>	xi
4. <i>Weighting the LFS of March 2003</i>	xi
5. <i>Symbols used in the tables that follow</i>	xi
6. <i>Comparability of results with other Stats SA data sources</i>	xii
7. <i>Confidence intervals</i>	xii
8. <i>Estimation and use of standard error</i>	xii
<b>Definitions of terms</b>	xiii
<b>Tables</b>	
<b>1. Population</b>	
1.1 By age, population group and sex	1
<b>2. Estimated population of working age (15– 65 years)</b>	
2.1 By economic activity, population group and sex	2
2.2 By economic activity, involvement and sex	4
2.3 By population group, sex and labour market status	
2.3.1 Official definition of unemployment	6
2.3.2 Expanded definition of unemployment	7
2.4 By province, sex and labour market status	
2.4.1 Official definition of unemployment	8
2.4.2 Expanded definition of unemployment	9
2.5 By highest level of education, sex and labour market status	
2.5.1 Official definition of unemployment	
2.5.1.1 All population groups	10
2.5.1.2 Black African	11
2.5.1.3 Coloured	12
2.5.1.4 Indian/Asian	13

2.5.1.5	White	14
2.5.2	Expanded definition of unemployment	
2.5.2.1	All population groups	15
2.5.2.2	Black African	16
2.5.2.3	Coloured	17
2.5.2.4	Indian/Asian	18
2.5.2.5	White	19
2.6	By definition of unemployment, whether work-related skills training had been received, sex and labour market status	20
<b>3.</b>	<b>Workers (employers, employees and self-employed)</b>	
3.1	By main industry and sector	21
3.2	By main occupation and sector	22
3.3	By population group, sex and sector	23
3.4	By main industry, population group and sex	
3.4.1	All sectors	24
3.4.2	Formal sector	25
3.4.3	Informal sector	26
3.5	By monthly income and sector	27
3.6	By highest level of education and sector	28
3.7	By highest level of education and monthly income	
3.7.1	All population groups	29
3.7.2	Black African	30
3.7.3	Other	31
3.8	With degrees, diplomas and certificates by field of study and monthly income	32
3.9	By main industry and monthly income	33
3.10	By main occupation and monthly income	34
3.11	By employment status	
3.11.1	By sector and sex	35
3.11.2	By sector, population group and sex	37
3.12	Provision for, or contribution towards, medical aid fund/ health insurance, by main industry	
3.12.1	Formal sector	38
3.12.2	Informal sector	39
3.13	By main industry and location of business	
3.13.1	Formal sector	40
3.13.2	Informal sector	41
3.14	By main industry and number of regular workers in the business	42
3.15	By main industry and whether their company or close corporation is registered	43
3.16	By main industry and deduction of UIF contributions	44
<b>4.</b>	<b>Employees</b>	
4.1	Conditions of employment	
4.1.1	By main industry and existence of written contract	45
4.1.2	By main industry and terms of employment	46
4.1.3	By main industry and paid leave status	47
4.1.4	By main industry and trade union membership	48
4.1.5	By main industry and whether the employer provides for, or contributes towards, medical aid fund/ health insurance	49
<b>5.</b>	<b>The unemployed</b>	
5.1	By age, population group and sex	
5.1.1	Official definition of unemployment	50
5.1.2	Expanded definition of unemployment	51
5.2	By duration of job seeking, age and whether they have worked before (official definition of unemployment)	52
5.3	Unemployed persons who have worked before by duration of unemployment and industry in which they worked	
5.3.1	Official definition of unemployment	53
5.3.2	Expanded definition of unemployment	54

5.4	Unemployed persons who have worked before by length of time since they last worked and previous occupation	
5.4.1	Official definition of unemployment	55
5.4.2	Expanded definition of unemployment	56
5.5	Unemployed persons who have worked before by length of time since they last worked and age (official definition of unemployment)	57
5.6	Unemployed persons who have never worked by duration of job seeking and age	58
5.7	By highest level of education, population group and sex	
5.7.1	Official definition of unemployment	59
5.7.2	Expanded definition of unemployment	60
5.8	Unemployed persons with degrees, diplomas and certificates by field of study, definition of unemployment and sex	61
<b>6.</b>	<b>Unemployed and not economically active population by reason for not working and sex</b>	
6.1	Official definition of unemployment	62
6.2	Expanded definition of unemployment	63
<b>7.</b>	<b>Population aged 66 years and older</b>	
7.1	Economically and not economically active by type of economic activity, sex and involvement in the activity	64
7.2	Economically and not economically active by type of economic activity, population group and involvement in the activity	66
7.3	Those who are working by population group, sex and sector	68
7.4	Those who are working by main industry and sex	69
7.5	Those who are working by occupation and sex	70
<b>8.</b>	<b>Voluntary work among population of working age (15– 65 years)</b>	
8.1	Population by province and involvement in uncompensated work	71
8.2	Those engaged in voluntary work by age, population group and sex	72
8.3	Those engaged in voluntary work by population group, sex and labour market status	
8.3.1	Official definition of unemployment	73
8.3.2	Expanded definition of unemployment	74
8.4	Population by type of uncompensated activity, population group, involvement in the activity and sex	75

## **Data and metadata set**

### **Labour force survey March 2003**

The data and metadata set from the *Labour force survey March 2003* will be available on CD-ROM at a cost of R1000.

For more details, and to place orders, contact

**User Information Services  
Statistics South Africa  
Private Bag X44  
Pretoria  
0001  
South Africa**

**Tel: (012) 310-8600  
Fax: (012) 310-8500  
E-mail: [info@statssa.gov.za](mailto:info@statssa.gov.za)  
website: [www.statssa.gov.za](http://www.statssa.gov.za)**

## LABOUR FORCE SURVEY ROUND 7: MARCH 2003

This statistical release presents a selection of key findings and additional tables from Stats SA's seventh labour force survey (LFS), conducted in March 2003, which examines the extent of employment in both the formal and informal sectors of the country, and the extent of unemployment. The survey gathered detailed information on approximately 69 000 adults of working age (15–65 years) living in 30 000 dwelling units across the country.

In this release, unlike previously, we do not compare the results to those of the previous rounds because the population estimates for this round are based on Census 2001, whereas in the previous releases they were based on Census 1996. This statistical release therefore describes the labour market as it was in March 2003. Statistics South Africa is in a process of benchmarking the earlier rounds of the LFS to the 2001 count.

Comparisons with the survey of employment and earnings (SEE) of March 2003 are however made in this release.

### INTRODUCTION

The LFS is a twice-yearly rotating panel household survey, specifically designed to measure the dynamics of employment and unemployment in the country. It measures a variety of issues related to the labour market, including unemployment rates (official and expanded), according to standard definitions of the International Labour Organisation (ILO). *For these definitions see Note 1 below.*

Statistics South Africa is presently using a rotating panel methodology to collect labour force statistics from households, to enable it to obtain a better picture of movements into and out of the labour market over time. A rotating panel sample involves visiting the same dwelling units on a number of occasions (in this instance, five at most), and after the panel is established, replacing a proportion of these dwelling units each round (in this instance, 20%). New dwelling units are added to the sample to replace those that are taken out. The advantage of this type of design is that it offers the ability to see how the work situation of members of the same households changes over time, while retaining the larger picture of the overall employment situation in the country. It also allows for both longitudinal and cross-sectional analysis.

The first pilot round of LFS fieldwork took place in February 2000, based on a probability sample of 10 000 dwelling units. The sample was increased to 30 000 dwelling units in September 2000. The results of both these surveys, benchmarked to Census 1996, were published as discussion documents. The third round of the LFS took place in February 2001, using the same 30 000 dwelling units as in the second round. The results of this third round were again benchmarked to Census 1996 and published as official statistics. The results of the fourth round, conducted in September 2001, were also published as official statistics. A new sample of 30 000 dwelling units was visited for the fourth round, since respondents were complaining of response fatigue after completing both the LFS and the Income and Expenditure survey questionnaires, but the benchmark remained Census 1996. The fifth round of the LFS took place in February 2002. Rotation of 20% of the new sample was implemented during this round. Of the 30 000 dwelling units visited during the fourth LFS, 80% were visited again. The remaining 20% comprised new dwelling units. The same rotation procedure was implemented for the sixth round of the LFS, conducted in September 2002, as well as for the seventh round. But this latest LFS has been benchmarked to Census 2001. The present document gives the findings of this seventh round. The results, in common with those of the fifth and the sixth rounds, are released as official statistics.

All the labour force survey results, at this stage, are based on a cross-sectional analysis, since there are insufficient collections over time for longitudinal analysis.

### THE LABOUR MARKET IN MARCH 2003

Table A is read as follows. In the row marked **a**, and in the column labeled 'Estimate ('000s)', we see that a total of 11 565 000 people were estimated to be employed in March 2003. The lower limit of this estimate, within 95% confidence limits, is 11 298 000, while the upper limit is 11 832 000. In other words, we are 95% sure that the actual number of people who were employed in March 2003 is somewhere between 11 298 000 and 11 832 000, taking sampling error into account.

In Table A, Stats SA gives the overall labour market trends for March 2003, based on the official definition of unemployment (*see Note 1 for this definition*). It looks at:

- (a) the estimated total number of people in the age category 15–65 years (those of working age);
- (b) the number of people in this age category who were not economically active (for example, full-time students, full-time homemakers, retired people and the disabled who are unable to work);
- (c) those who were economically active (both the employed and the unemployed according to the official definition of unemployment);
- (d) the labour market participation rate (the percentage of all people aged 15–65 years who are economically active); and
- (e) the labour absorption rate (the percentage of all those aged 15–65 years who are actually employed).

The table shows that, in March 2003, there were an estimated 29,6 million people aged between 15 and 65 years. Among these people:

- approximately 16,8 million were economically active, of whom
  - 11,6 million were employed, and
  - 5,3 million were unemployed; and
- 12,7 million were not economically active, of whom
  - 5,2 million were full-time scholars,
  - 1,2 million were full-time homemakers,
  - 1,2 million were disabled or chronically ill, hence unable to work,
  - 1,0 million were either too young or too old to work,
  - 0,3 million were retired, and
  - the remainder were not economically active for other reasons.

The official unemployment rate is estimated to be 31,2%.

<b>TABLE A: LABOUR MARKET TRENDS IN MARCH 2003 ACCORDING TO THE OFFICIAL DEFINITION OF UNEMPLOYMENT</b>				
		<b>95% confidence intervals</b>		
		<b>Lower limit (‘000)</b>	<b>Estimate (‘000)</b>	<b>Upper limit (‘000)</b>
<b>a</b>	Total employed	11 298	<b>11 565</b>	11 832
<b>b</b>	Total unemployed (official definition)	5 026	<b>5 250</b>	5 473
<b>c</b>	Total economically active = a + b	16 442	<b>16 815</b>	17 187
<b>d</b>	Total not economically active	12 372	<b>12 740</b>	13 108
<b>e</b>	Total aged 15–65 years = c + d	28 964	<b>29 555</b>	30 145
<b>f</b>	Official unemployment rate = $b * 100 / c$	30,2%	<b>31,2%</b>	32,2%
<b>g</b>	Labour market participation rate = $c * 100 / e$	56,1%	<b>56,9%</b>	57,7%
<b>h</b>	Labour absorption rate = $a * 100 / e$	38,4%	<b>39,1%</b>	39,9%



## EMPLOYMENT IN THE FORMAL AND INFORMAL SECTORS: MARCH 2003

### *Employment by sector*

The total number of workers in March 2003 was estimated at 11,6 million people. The majority of these people were employed in the formal sector (63,6%). The share of employment of the informal sector (excluding subsistence or small-scale agriculture and domestic service) was estimated at 16,0%, commercial agriculture at 7,5% and subsistence or small-scale agriculture at 3,6%, while domestic workers constituted 8,7% of the employed, and 0,6% did not specify their sector.

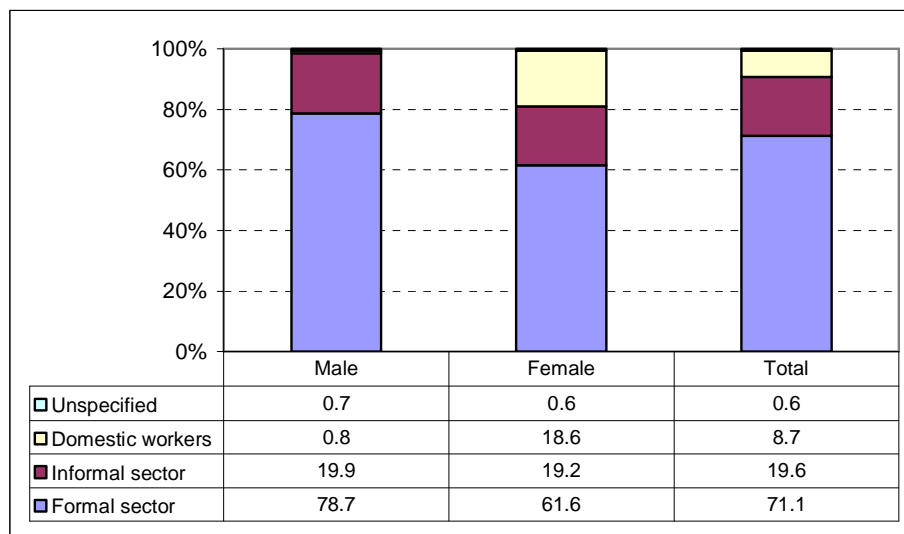
Sector	('000)	%
Formal sector (excluding commercial agriculture)	7 358	63,6
Commercial agriculture	865	7,5
Informal sector (excluding subsistence or small-scale agriculture)	1 845	16,0
Subsistence or small-scale agriculture	420	3,6
Domestic workers	1 005	8,7
Unspecified	73	0,6
<b>Total</b>	<b>11 565</b>	<b>100,0</b>

### *Employment by sector and sex*

Figure 1 indicates employment in each sector by sex in March 2003. In this breakdown, the formal sector includes commercial agriculture, and the informal sector includes small-scale or subsistence agriculture but excludes domestic workers. The figure shows that:

- Overall, and for both sexes, the majority of workers were employed in the formal sector in March 2003, 78,7% of males and 61,6% of females.
- The percentage of males employed in the informal sector (19,9%) was more or less the same as that of females employed in the same sector (19,2%).
- However, the share of domestic workers among employed women was much bigger (18,6%) than among employed men (0,8%). Overall, 8,7% of the working population were domestic workers.

**Figure 1: Male and female workers by employment sector: March 2003**

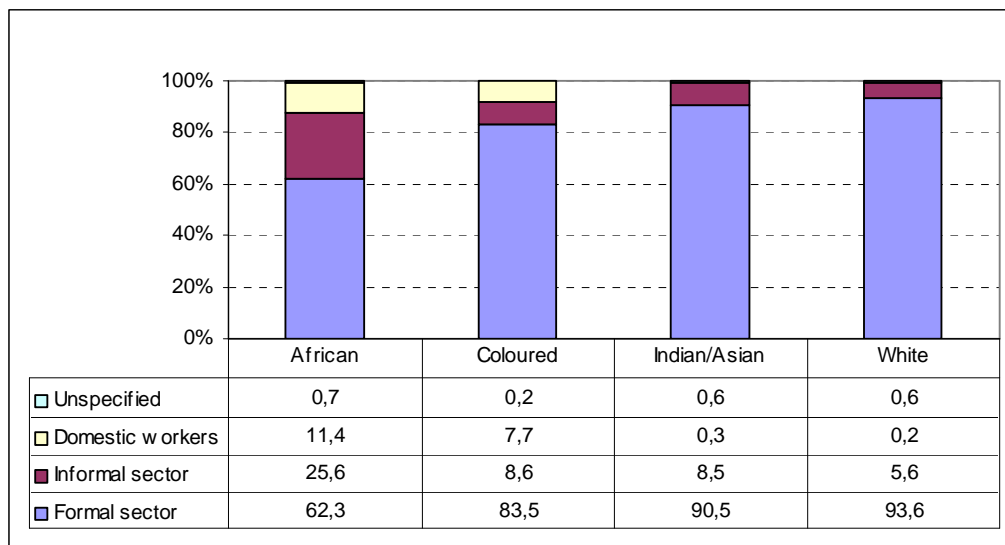


### ***Employment by sector and population group***

Figure 2 indicates that:

- Across all population groups the majority of workers were employed in the formal sector and a relatively small proportion was employed as domestic workers in March 2003.
- Africans had the smallest percentage of people employed in the formal sector (62,3%). More than 90% of the Indian/Asian and white population groups (90,5% and 93,6% respectively) were employed in the formal sector.
- On the other hand, the African population had the highest percentage (25,6%) employed in the informal sector compared to the other population groups (8,6%, 8,5% and 5,6% of the coloured, Indian/Asian and white groups respectively).
- A similar picture is found with domestic workers. The percentage of African workers employed as domestic workers (11,4%) was higher than in the other population groups (7,7 of employed coloureds, but only 0,3% of employed Indians/Asians and 0,2% of employed whites).

**Figure 2: Workers in each population group by employment sector: March 2003**



### ***Employment by main industry and sector***

Figure 3 indicates that in March 2003 the largest group of workers was employed in the wholesale and retail trade industry (20,5%), followed by community, social and personal services (18,9%) and then manufacturing (14,4%). Overall, agriculture provided 11,1% of the total employment.

**Figure 3: Workers by main industry: March 2003**

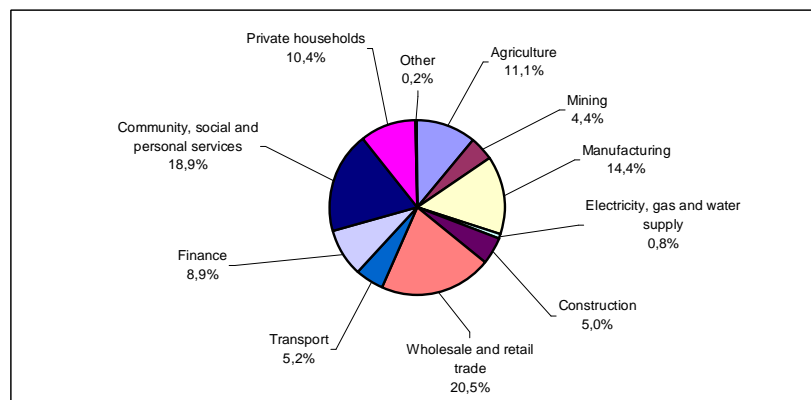


Table C compares employment in the formal and the informal sectors by industry. It indicates that:

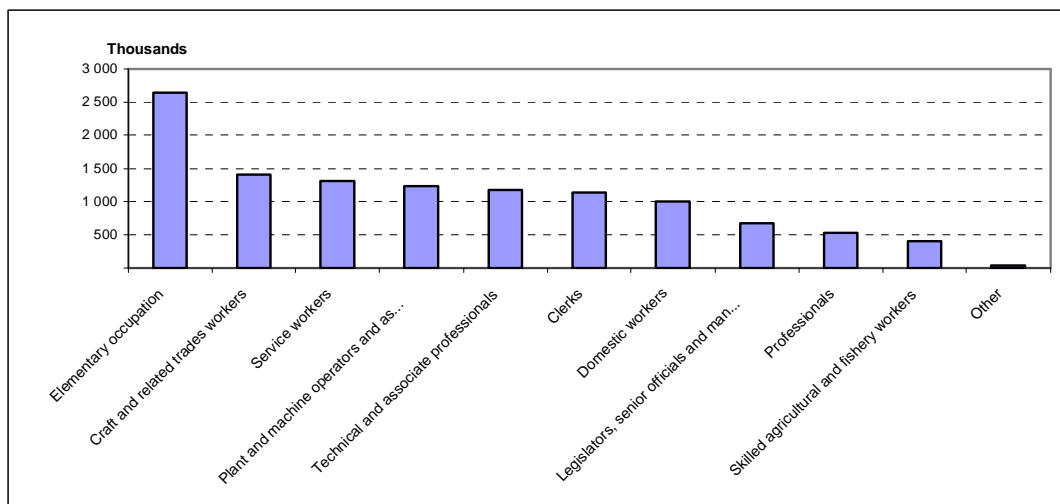
- In March 2003, approximately 8,2 million people were employed in the formal sector, about 2,3 million people in the informal sector, and 1,0 million in domestic work.
- The largest group of people employed in the formal sector worked in the community, social and personal services industry (24,4%), whereas in the informal sector the largest group worked in trade (38,4%).
- Approximately 18,5% of the people working in the informal sector were employed in agriculture, making the agricultural industry the second biggest industry in terms of informal sector employment.
- On the other hand about 10,5% people were employed in agriculture in the formal sector, making this industry the fifth biggest in terms of formal sector employment.

Industry	Formal		Informal		Domestic		Total	
	N ('000)	%	N ('000)	%	N ('000)	%	N ('000)	%
Agriculture	865	10,5	420	18,5			1 288	11,1
Mining	509	6,2	3	0,2			514	4,4
Manufacturing	1 462	17,8	196	8,7			1 668	14,4
Electricity	83	1,0	5	0,2			88	0,8
Construction	369	4,5	202	8,9			583	5,0
Trade	1 489	18,1	869	38,4			2 373	20,5
Transport	464	5,6	127	5,6			598	5,2
Business services	940	11,4	78	3,5			1 027	8,9
Community services	2 006	24,4	165	7,3			2 183	18,9
Private households	1	0,0	196	8,7	1 005	100,0	1 202	10,4
Other/unspecified industry	34	0,4	3	0,1			42	0,4
<b>Total</b>	<b>8 223</b>	<b>100,0</b>	<b>2 265</b>	<b>100,0</b>	<b>1 005</b>	<b>100,0</b>	<b>11 565</b>	<b>100,0</b>

#### *Employment by main occupation*

Figure 4 indicates that most of the employed were working in elementary occupations excluding domestic work (about 2,6 million people), followed by craft and related trades workers (about 1,4 million people) and then service workers (about 1,3 million people). The occupational group with the least number of workers was skilled agricultural and fishery workers (approximately 0,4 million people). Skilled agricultural workers includes skilled field crop and vegetable growers; gardeners, horticultural and nursery growers; dairy and livestock producers; poultry producers; forestry workers and loggers; etc., while elementary agricultural employment includes unskilled farm labourers.

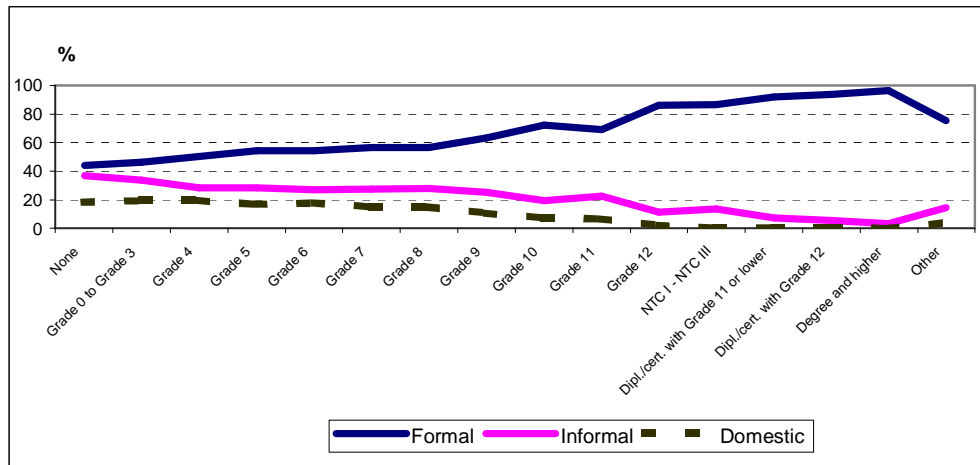
**Figure 4: Workers by main occupation: March 2003**



### *Employment and level of education*

Figure 5 looks at employment in each sector by level of education in March 2003. It indicates that the lower the level of education the less likely it is for the individual to be employed in the formal sector. Conversely, the higher the level of education the more likely it is for the person to be employed in the formal sector. For example, among those who are employed with no education, 44,2% were employed in the formal sector, 36,9% were employed in the informal sector and 18,3% were employed in domestic work. Among the employed with grade 12 as their highest level of education, 86,1% were employed in the formal sector, 11,3% were employed in the informal sector and 2,1% in domestic services.

**Figure 5: Workers by employment sector and highest level of education: March 2003**



### *Comparison of formal employment figures in the LFS and the SEE*

Formal sector employment figures may be obtained from another Stats SA data set, the quarterly survey of employment and earnings (SEE), which specifically collects information on formal employment in South Africa (excluding non-VAT-registered businesses as described below).

The comparable results to the LFS of March 2003 are from the SEE of March 2003. It needs to be borne in mind that SEE obtains data from businesses, while in the LFS households, rather than businesses, are sampled. Households contain people working in all industries whether or not the owners of those businesses pay VAT. When complex probability sampling is used, people have the same chance of being selected in their particular stratum in the sample as their overall proportion in a particular industry within that stratum.

The SEE, on the other hand, collected information in March 2003 from formal sector businesses registered for VAT, where the annual turnover is R300 000 or more. (Only businesses that make R300 000 turnover per annum or more are compelled to register for VAT. A business that does not meet this threshold is not included in the sample for SEE, even if it is VAT-registered.) The SEE therefore misses certain formal sector and informal sector businesses that are covered by the LFS. In addition, the SEE excludes agriculture, forestry, hunting and fishing.

Table D indicates that in March 2003, according to the SEE, 6,5 million people were employed in the formal sector excluding commercial agriculture. A further 0,8 million people working in the formal sector were covered by the LFS but not in the SEE.

<b>TABLE D: FORMAL SECTOR EMPLOYMENT ACCORDING TO THE LFS AND THE SEE OF MARCH 2003</b>	
	<b>(‘000)</b>
Employed according to SEE	6 497
Employed in formal sector in activities not covered in SEE	825
<b>Total</b>	<b>7 322</b>

*Comparison of formal sector employment by industry in the LFS and the SEE of March 2003*

Table E indicates that the SEE finds less employment than the LFS in all types of industry covered by both surveys except business services. Moreover all the differences are significant except for the construction industry. The significant differences are most probably explained by the fact that the SEE focuses on VAT-registered businesses with a minimum turnover of R300 000. The new sample for SEE in 2004 will use business information from both the VAT and the income tax register.

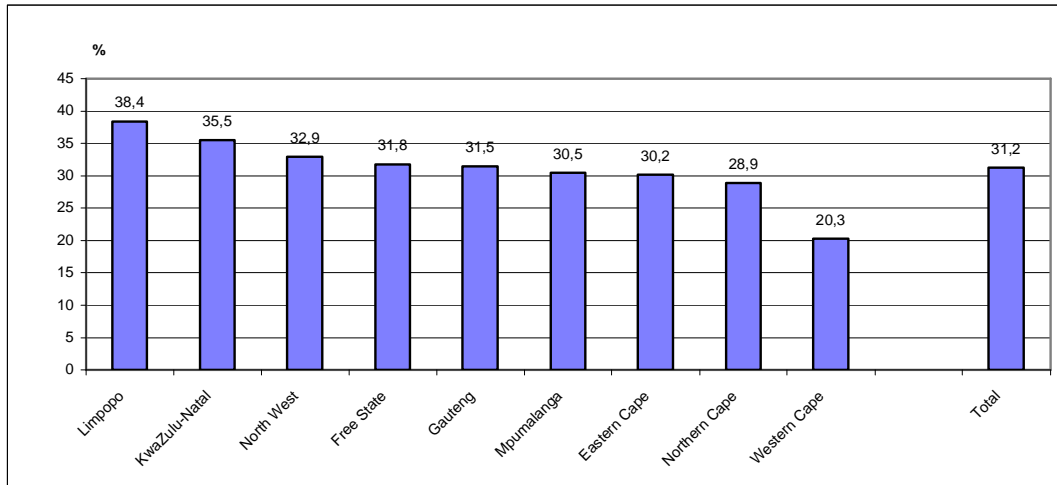
<b>TABLE E: COMPARISON BY INDUSTRY OF FORMAL SECTOR EMPLOYMENT AS MEASURED IN THE LFS AND THE SEE OF MARCH 2003</b>					
	<b>LFS</b>			<b>SEE</b>	<b>Stat. significance</b>
	<b>95% confidence limits</b>			<b>N (‘000)</b>	
	<b>N (‘000)</b>	<b>Lower</b>	<b>Upper</b>		
Agriculture	(865)	(767)	(964)	-	-
Mining	509	431	588	417	Sign.
Manufacturing	1 462	1 375	1 548	1 249	Sign.
Electricity	83	65	100	46	Sign.
Construction	369	326	411	337	Not sign.
Trade	1 489	1 404	1 573	1 296	Sign.
Transport	464	417	512	201	Sign.
Business services	940	868	1 012	1 209	Sign.
Community services (excluding domestic)	2 006	1 902	2 109	1 742	Sign.
Home businesses, other and unspecified	(35)	23	48	-	
<b>Total (excluding agriculture, home businesses, other and unspecified)</b>	<b>7 322</b>	<b>7 142</b>	<b>7 574</b>	<b>6 497</b>	<b>Sign.</b>

## UNEMPLOYMENT IN MARCH 2003

### *Unemployment rate by province (official definition)*

Figure 6 indicates that in March 2003 Limpopo had the highest unemployment rate of all nine provinces. Approximately 38,4% of the economically active population in Limpopo was unemployed, followed by KwaZulu-Natal with approximately 35,5% unemployment and North West with 32,9% unemployed. Western Cape had the lowest unemployment rate in South Africa (approximately 20,3%).

**Figure 6: Unemployment rate (official definition) by province: March 2003**

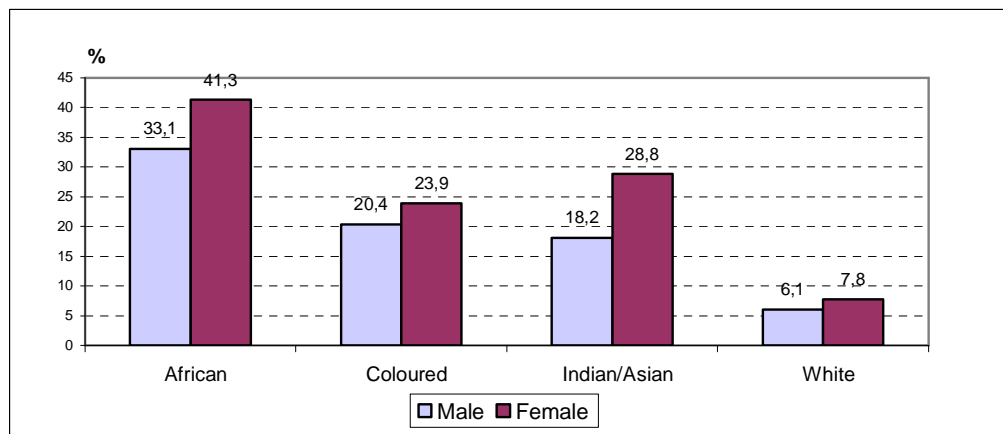


### *Unemployment rate by population group and sex (official definition)*

Figure 7 indicates that:

- Africans had the highest unemployment rate in South Africa in March 2003, while whites had the lowest unemployment rate.
- The unemployment rate for women exceeded that of men in all population groups.
- While Indian/Asian women's unemployment rate was higher (28,8%) than that of coloured women (23,9%), the unemployment rate for Indian/Asian men was lower (18,2%) than that of coloured men (20,4%).

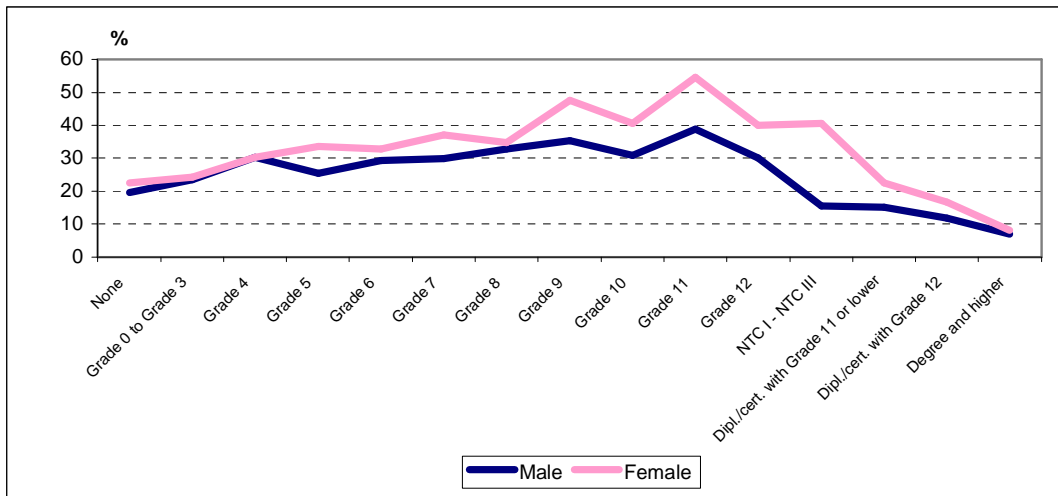
**Figure 7: Unemployment rate (official definition) by population group and sex: March 2003**



***Unemployment rate by highest level of education and population group (official definition)***

Figure 8 indicates lower official unemployment rates for people with low educational qualifications and for those with post-matric qualifications. The highest unemployment rates are found among those with educational qualifications between grade 8 and grade 12, for both males and females. Generally, females have higher unemployment rates than males across all educational levels. For example, the official unemployment rate among both men and women with no education is 19,6 and 22,6 respectively, rising steadily to 38,8% for men and 54,5% for women with grade 11 as the highest level of education. But among those with degrees it drops sharply to 6,9% for men and 8,1% for females.

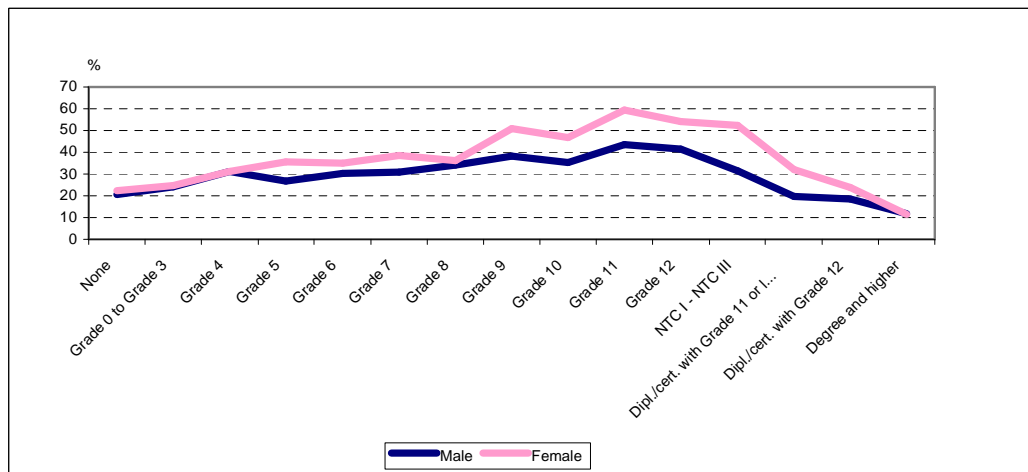
**Figure 8: Unemployment rate (official definition) by highest level of education and sex: March 2003**



***The pattern of unemployment rates by education level among Africans***

Figure 9 indicates that for Africans the same pattern is found as the one found nationally. Lower unemployment rates are found among those with low educational qualifications and among those with post-matric qualifications. The highest unemployment rates are found among those with educational qualifications between grade 8 and grade 12 for both males and females. Across all educational levels the unemployment rates for women exceed those of men.

**Figure 9: Unemployment rate (official definition) among Africans by highest level of education and sex: March 2003**



## LABOUR MARKET TRENDS: EXPANDED DEFINITION OF UNEMPLOYMENT

The main difference between the official and the expanded definitions of unemployment is the requirement in the former that, in order to be classified as unemployed, a person must have engaged in job seeking in the four weeks prior to the interview (*see Note 1 for both definitions*). Table F below gives an overall picture of the labour market in March 2003, using the expanded definition of unemployment.

Table F shows that, according to the expanded definition of unemployment, the size of the economically active population, the number of unemployed people and the unemployment rate are substantially higher than when using the official definition. A large group of people who were available for work did not actively seek work in the four weeks prior to the interview in March 2003.

<b>TABLE F: LABOUR MARKET TRENDS ACCORDING TO THE EXPANDED DEFINITION OF UNEMPLOYMENT: MARCH 2003</b>				
		<b>95% confidence intervals</b>		
		<b>Lower limit (‘000s)</b>	<b>Estimate (‘000s)</b>	<b>Upper limit (000s)</b>
<b>A</b>	Total employed	11 298	<b>11 565</b>	11 832
<b>B</b>	Total unemployed (official definition)	8 128	<b>8 421</b>	8 714
<b>C</b>	Total economically active = a + b	19 563	<b>19 986</b>	20 409
<b>D</b>	Total not economically active	9 301	<b>9 569</b>	9 836
<b>E</b>	Total aged 15–65 years = c + d	28 964	<b>29 555</b>	30 145
<b>F</b>	Expanded unemployment rate = $b * 100 / c$	41,2%	<b>42,1%</b>	43,1%
<b>G</b>	Labour market participation rate = $c * 100 / e$	67,0%	<b>67,6%</b>	68,2%
<b>H</b>	Labour absorption rate = $a * 100 / e$	38,4%	<b>39,1%</b>	39,9%

## VOLUNTARY WORKERS

This round of the LFS included information on voluntary workers. The results indicate that, out of the total population of working age (15–65 years) approximately 1,0 million people were involved in uncompensated work. Of this 1,0 million people, an estimated 0,5 million were employed, 0,2 million were unemployed and 0,3 million were not economically active, according to the official definition of unemployment.

Table G indicates the type of uncompensated work and the number of people involved in each type. The highest number of people were involved in organising cultural events (e.g. music, dance, or performances), sporting events, or recreational activities for a community, neighbourhood, or group, followed by those involved in helping the sick or handicapped people in their everyday activities.

<b>TABLE G: VOLUNTARY WORKERS BY THE TYPE OF UNCOMPENSATED WORK: MARCH 2003</b>		
<b>Type of uncompensated work</b>	<b>Number of people involved (‘000)</b>	<b>Proportion involved %</b>
To help sick or handicapped people in their everyday activities	154	14,8
To provide medical care, or counselling, to sick or handicapped people	129	12,4
To provide training or instruction to others	120	11,5
To keep law and order in a community	122	11,7
To maintain or replenish community resources (e.g. building or improving roads, water supply, structures, green areas, etc.)	171	16,4
To organise cultural events (e.g. music, dance, or performances), sporting events, or recreational activities for a community, neighbourhood, or a group	314	30,1
To collect money for an organisation/institution	161	15,4
To organise events to collect money for an organisation/institution	130	12,5
Other uncompensated work	84	8,0
<b>Total</b>	<b>1 044</b>	<b>100</b>

**Mr Pali Lehohla**  
Statistician-General: Statistics South Africa



## NOTES

### 1. *Official and expanded unemployment rates*

Statistics South Africa (Stats SA) uses the following definition of unemployment as its *official* definition. The *unemployed* are those people within the *economically active population* who: (a) did not work during the seven days prior to the interview, (b) want to work and are available to start work within a week of the interview, and (c) have taken active steps to look for work or to start some form of self-employment in the four weeks prior to the interview. The *expanded definition of unemployment* excludes criterion (c).

Among those who are included in the expanded but not the official definition of unemployment will be discouraged job seekers (those who said they were unemployed but had not taken active steps to find work in the four weeks prior to the interview).

Stats SA reports on the situation of the unemployed using both the official and the expanded definition. In the present economic climate, there is a proportion of discouraged work seekers who face constraints, for example high travel costs and lack of transport, when seeking work.

### 2. *Sample design*

For the LFS a rotating panel sample design is being used, to allow for measurement of change in people's employment situation over time. The same dwellings are visited on, at most, five different occasions. After this, new dwelling units are included for interviewing from the same PSU in the master sample. This means a rotation of 20% of dwelling units each time.

The database of enumerator areas (EAs) established during the demarcation phase of Census '96 constituted the sampling frame for selecting EAs for the LFS. Small EAs consisting of fewer than 100 dwelling units were combined with adjacent EAs to form primary sampling units (PSUs) of at least 100 dwelling units, to allow for repeated sampling of dwelling units within each PSU. The sampling procedure for the master sample involved explicit stratification by province and within each province, by urban and non-urban areas. Independent samples of PSUs were drawn for each stratum within each province. The smaller provinces were given a disproportionately large number of PSUs compared to the bigger provinces. Simple random sampling was applied to select 10 dwelling units to visit in each PSU as ultimate sampling units. If more than one household is found in the same dwelling unit all such households are interviewed.

Altogether, 3 000 PSUs were drawn for the master sample, by means of probability proportional to size principles in each stratum. The measure of size was the number of dwelling units in each PSU. A subset of 1 000 PSUs was drawn for the pilot LFS of February 2000. This was increased to 3 000 PSUs for September 2000 and February 2001, in which the same 30 000 dwelling units were visited. In September 2001 a new sample of 30 000 dwelling units was drawn. In February 2002, 80% of the dwelling units sampled in September 2001 were visited again. The remaining 20% comprised new dwelling units. The same rotation procedure was implemented for the sixth and the seventh round of the LFS.

A new master sample will be drawn in October 2003 based on Census 2001 for the LFS for the next five years.

### 3. *Coverage*

The target population is all households and residents in workers hostels. The survey does not cover institutions such as old age homes, hospitals, prisons and military barracks.

### 4. *Weighting the LFS of March 2003*

A two-stage weighting procedure was carried out on LFS March 2003. The first stage weighted the results to separate estimates of the population size, based on the population census of October 2001, as adjusted by a post-enumeration survey (PES). The second stage used post-stratification by province, gender, population group and five-year interval age groups based on mid-year estimates.

### 5. *Symbols used in the tables that follow*

When a dash (-) is shown there were no respondents in the category.

When a single asterisk (\*) is shown in the table, the sample size was too small to give reliable estimates.

### 6. Comparability of results with other Stats SA data sources

The quarterly *survey of employment and earnings* (SEE) collects information on formal employment in South Africa, published in *Statistical release P0275*. The results of the March and September rounds of the SEE are comparable to the LFS.

### 7. Confidence intervals

Stats SA have calculated 95% confidence limits for key variables. These are available on request to users who require this information.

### 8. Estimation and use of standard error

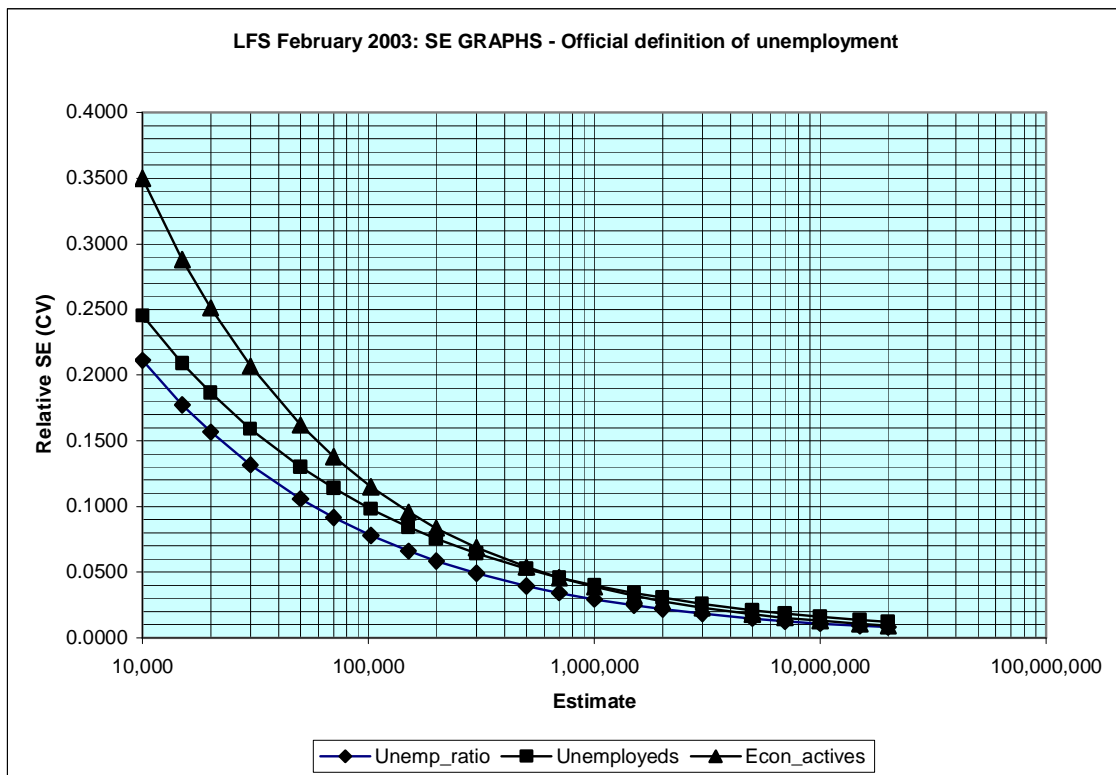
The published results of the Labour Force Survey are based on representative probability samples drawn from the South African population, as discussed in the section on sample design. Consequently, all estimates are subject to sampling variability. This means that the sample estimates may differ from the population figures that would have been produced if the entire South African population had been included in the survey. The measure usually used to indicate the probable difference between a sample estimate and the corresponding population figure is the *standard error (SE)*, which measures the extent to which an estimate might have varied by chance because only a sample of the population was included.

There are two major factors which influence the value of a standard error. The first factor is the sample size. Generally speaking, the larger the sample size, the more precise the estimate and the smaller the standard error. Consequently, in a national household survey such as the LFS, one expects more precise estimates at the national level than at the provincial level due to the larger sample size involved. The second factor is the variability between households of the parameter of the population being estimated, for example, the number of unemployed persons in the household.

Figure 10 indicates that:

- the standard error for the unemployed is  $0,0208 \text{ (CV)} \times 5\,250\,000 \text{ (the unemployed)} = 108\,950$ , and
- the standard error for the unemployment rate is  $0,0143 \text{ (CV)} \times 31,2 \text{ (unemployment rate)} = 0,45$ .

**Figure 10: Coefficient of variation (CV) by estimate for the unemployed, the unemployment rate and the economically active (using the official definition of employment): March 2003**



## DEFINITIONS OF TERMS

A *household* consists of a single person or a group of people who live together for at least four nights a week, who eat together and who share resources.

A *dwelling unit* is any structure or part of a structure or group of structures occupied by one or more than one household; or which is vacant or under construction but could be lived in at the time of the survey. The dwelling unit is the major listing unit for this survey. However, if multiple households are identified during listing, then each household is listed separately. But the listing unit is not primarily households, as multiple households are sometimes discovered at the time of the survey. In workers hostels, (1) where rooms are occupied by individual persons/households, then each room is treated as a dwelling unit, and (2) in the case of dormitories/communal rooms, each bed is listed separately and treated as a dwelling unit. It is important to note that the dwelling unit as defined here was also the selection unit for our sample.

*Population group* describes the racial classification of a particular group of South African citizens. The previous government used legislation to impose this type of classification, to divide the South African population into distinct groupings on which to base apartheid policies. For quite a different reason it remains important for Stats SA to continue to use this classification wherever possible. It clearly indicates the effects of discrimination of the past, and permits monitoring of policies to alleviate discrimination. Note that, in the past, population group was based on a legal definition, but it is now based on self-perceptions and self-classification. An *African/black* person is someone who classifies him/herself as such. The same applies to a *coloured, Indian/Asian or white* person.

A *hostel* is a communal living quarter for workers, provided by a public organisation such as a local authority, or a private organisation such as a mining company. These were residential dormitories established for migrant workers during the apartheid era, and they continue to house people working in certain industries, such as the mining industry.

*Institutions* are communal temporary, semi-permanent or permanent living arrangements for people in special circumstances, for example prisons, police cells, school boarding facilities, homes for the aged or the disabled, hotels and hospitals.

The *working age population* includes all those aged between 15 and 65 years.

The *economically active population* consists of both those who are employed and those who are unemployed.

The *employed* are those who performed work for pay, profit or family gain in the seven days prior to the survey interview, or who were absent from work during these seven days, but did have some form of paid work during this time.

The *official unemployment rate*: see Note 1.

The *expanded unemployment rate*: see Note 1.

The people who are *out of the labour market* or who are *not economically active* are those who are not available for work. This category includes full-time scholars and students, full-time homemakers, those who are retired, and those who are unable or unwilling to work.

The *formal sector* includes all businesses that are registered in any way.

The *informal sector* consists of those businesses that are not registered in any way. They are generally small in nature, and are seldom run from business premises. Instead, they are run from homes, street pavements or other informal arrangements.

*Primary industries* include agriculture, forestry and fishing, and mining and quarrying.

*Secondary industries* include manufacturing, electricity and other utilities, and construction.

*Tertiary industries* include trade, transport, financial and business services, and social, personal and community services.

*Employment status* refers to whether or not the person is self-employed, or works as an employee, or both.

*Location* refers to whether the person lives in an urban or non-urban area.

- An *urban* area is one that was legally proclaimed as being urban prior to the redemarcation of municipalities. Such areas are towns, cities and metropolitan areas.
- All other areas are classified as *non-urban*, including commercial farms, small settlements, rural villages and other areas, which are further away from towns and cities.

(This definition is currently under review, but applies to this survey as the sample was drawn according to Census 1996 classification.)

*Workers* include the self-employed, employers and employees.

*Labour market dynamics* refer to movement into and out of the labour market, and into and out of actual employment, over a specified time period.

# 1. Population

## 1.1 By age, population group and sex

1 000

Age group	Black African			Coloured			Indian/Asian			White			Total		
	Total	Male	Female	Total	Male	Female	Total	Male	Female	Total	Male	Female	Total	Male	Female
<b>RSA</b>	<b>36,605</b>	<b>17,419</b>	<b>19,184</b>	<b>4,096</b>	<b>1,923</b>	<b>2,172</b>	<b>1,161</b>	<b>561</b>	<b>599</b>	<b>4,252</b>	<b>2,105</b>	<b>2,143</b>	<b>46,136</b>	<b>22,020</b>	<b>24,110</b>
0 - 4	3,677	1,820	1,857	395	193	202	68	27	40	288	146	142	4,428	2,186	2,242
5 - 9	4,060	2,068	1,991	422	206	216	84	40	44	306	158	148	4,873	2,473	2,399
10-14	4,382	2,166	2,216	424	207	218	91	49	42	271	147	124	5,170	2,569	2,600
15-19	4,335	2,149	2,186	444	223	221	113	63	50	317	176	140	5,211	2,613	2,598
20-24	3,612	1,740	1,872	362	167	195	128	64	64	283	138	143	4,390	2,111	2,276
25-29	3,256	1,575	1,680	353	161	192	112	54	59	320	149	171	4,044	1,942	2,101
30-34	2,584	1,222	1,362	325	141	184	94	51	43	400	197	203	3,404	1,611	1,793
35-39	2,410	1,137	1,274	309	151	158	91	35	55	358	175	183	3,167	1,498	1,669
40-44	2,064	964	1,100	279	141	138	79	40	40	333	161	172	2,757	1,306	1,450
45-49	1,574	708	865	233	102	131	92	37	55	318	160	159	2,222	1,007	1,214
50-54	1,238	581	658	179	82	97	76	38	38	268	137	131	1,763	839	923
55-59	885	389	496	110	47	63	54	29	25	199	100	99	1,251	566	684
60-64	803	298	505	98	39	59	34	12	22	188	87	101	1,123	435	688
65+	1,703	589	1,114	161	64	98	44	21	23	386	167	219	2,298	842	1,456
Unspecified	20	13	*	*	-	*	-	-	-	16	*	*	37	20	16

\*For all values of 10 000 or lower the sample size is too small for reliable estimates.  
Due to rounding numbers do not necessarily add up to totals.

## 2. Estimated population of working age (15-65 years)

### 2.1 By economic activity, population group and sex

1 000

Economic activity and population group	Involved**			Not involved			Total		
	Total	Male	Female	Total	Male	Female	Total	Male	Female
Run or do any kind of business, big or small, for himself/herself									
<b>Total</b>	<b>1 720</b>	<b>935</b>	<b>784</b>	<b>27 831</b>	<b>13 088</b>	<b>14 739</b>	<b>29 555</b>	<b>14 026</b>	<b>15 525</b>
Black African	1 162	544	619	21 758	10 280	11 477	22 923	10 826	12 097
Coloured	76	49	27	2 634	1 214	1 420	2 710	1 263	1 447
Indian/Asian	68	52	17	812	374	438	880	425	454
White	410	288	122	2 612	1 214	1 396	3 023	1 502	1 519
Do any work for a wage, salary, commission or any payment in kind									
<b>Total</b>	<b>8 274</b>	<b>5 087</b>	<b>3 185</b>	<b>21 276</b>	<b>8 937</b>	<b>12 338</b>	<b>29 555</b>	<b>14 026</b>	<b>15 525</b>
Black African	5 250	3 419	1 831	17 671	7 405	10 264	22 923	10 826	12 097
Coloured	1 167	652	516	1 543	612	931	2 710	1 263	1 447
Indian/Asian	350	213	136	530	212	318	880	425	454
White	1 500	800	698	1 522	701	820	3 023	1 502	1 519
Do any work as a domestic worker for a wage, salary, or any payment in kind									
<b>Total</b>	<b>1 181</b>	<b>250</b>	<b>931</b>	<b>28 369</b>	<b>13 774</b>	<b>14 592</b>	<b>29 555</b>	<b>14 026</b>	<b>15 525</b>
Black African	1 050	227	822	21 871	10 597	11 273	22 923	10 826	12 097
Coloured	127	23	105	2 582	1 241	1 342	2 710	1 263	1 447
Indian/Asian	*	-	*	878	425	453	880	425	454
White	*	-	*	3 019	1 502	1 515	3 023	1 502	1 519
Help unpaid in a family business of any kind									
<b>Total</b>	<b>72</b>	<b>26</b>	<b>47</b>	<b>29 478</b>	<b>13 998</b>	<b>15 477</b>	<b>29 555</b>	<b>14 026</b>	<b>15 525</b>
Black African	53	22	30	22 868	10 802	12 065	22 923	10 826	12 097
Coloured	*	*	*	2 708	1 262	1 445	2 710	1 263	1 447
Indian/Asian	*	*	*	876	425	451	880	425	454
White	14	*	12	3 008	1 500	1 506	3 023	1 502	1 519
Do any work in his/her own or the family's plot, farm, food garden, cattle post or kraal or help in growing farm produce or in looking after animals for the household									
<b>Total</b>	<b>344</b>	<b>162</b>	<b>182</b>	<b>29 207</b>	<b>13 861</b>	<b>15 342</b>	<b>29 555</b>	<b>14 026</b>	<b>15 525</b>
Black African	333	155	178	22 588	10 669	11 918	22 923	10 826	12 097
Coloured	*	-	*	2 707	1 263	1 445	2 710	1 263	1 447
Indian/Asian	-	-	-	880	425	454	880	425	454
White	*	*	*	3 013	1 495	1 516	3 023	1 502	1 519

**2. Estimated population of working age (15-65 years)**  
**2.1 By economic activity, population group and sex (concluded)**

1 000

Economic activity and population group	Involved**			Not involved			Total		
	Total	Male	Female	Total	Male	Female	Total	Male	Female
Do any construction or major repair work on his/her own home, plot, cattle post or business or those of the family									
<b>Total</b>	<b>25</b>	<b>18</b>	*	<b>29 525</b>	<b>14 006</b>	<b>15 516</b>	<b>29 555</b>	<b>14 026</b>	<b>15 525</b>
Black African	16	*	*	22 904	10 814	12 089	22 923	10 826	12 097
Coloured	-	-	-	2 709	1 263	1 447	2 710	1 263	1 447
Indian/Asian	-	-	-	880	425	454	880	425	454
White	*	*	*	3 013	1 494	1 517	3 023	1 502	1 519
Catch any fish, prawns, shells, wild animals or other food for sale or family food									
<b>Total</b>	*	*	-	<b>29 546</b>	<b>14 019</b>	<b>15 523</b>	<b>29 555</b>	<b>14 026</b>	<b>15 525</b>
Black African	*	*	-	22 916	10 820	12 095	22 923	10 826	12 097
Coloured	-	-	-	2 709	1 263	1 447	2 710	1 263	1 447
Indian/Asian	-	-	-	880	425	454	880	425	454
White	-	-	-	3 021	1 501	1 518	3 023	1 502	1 519
Beg for money or food in public									
<b>Total</b>	*	*	*	<b>29 548</b>	<b>14 022</b>	<b>15 522</b>	<b>29 555</b>	<b>14 026</b>	<b>15 525</b>
Black African	*	*	-	22 919	10 823	12 095	22 923	10 826	12 097
Coloured	*	*	*	2 708	1 262	1 446	2 710	1 263	1 447
Indian/Asian	-	-	-	880	425	454	880	425	454
White	-	-	-	3 022	1 502	1 518	3 023	1 502	1 519
Involved in at least one economic activity except begging									
<b>Total</b>	<b>11 499</b>	<b>6 417</b>	<b>5 080</b>	<b>18 056</b>	<b>7 609</b>	<b>10 446</b>	<b>29 555</b>	<b>14 026</b>	<b>15 525</b>
Black African	7 774	4 337	3 437	15 149	6 489	8 659	22 923	10 826	12 097
Coloured	1 375	724	651	1 335	539	796	2 710	1 263	1 447
Indian/Asian	423	265	158	457	160	296	880	425	454
White	1 917	1 086	830	1 106	417	689	3 023	1 502	1 519

\* For all values of 10 000 or lower the sample size is too small for reliable estimates.

\*\* In this table, people who are normally engaged in an economic activity but were temporarily absent from work are not counted as involved.

Totals include other and unspecified population groups.

Due to rounding numbers do not necessarily add up to totals.

## 2. Estimated population of working age (15-65 years)

### 2.2 By economic activity, involvement and sex

1 000

Economic activity and sex	Involved**	Not involved	Total
Run or do any kind of business, big or small for himself/herself			
<b>Total</b>	<b>1 720</b>	<b>27 831</b>	<b>29 555</b>
Male	935	13 088	14 026
Female	784	14 739	15 525
Do any work for a wage, salary, commission or any payment in kind			
<b>Total</b>	<b>8 274</b>	<b>21 276</b>	<b>29 555</b>
Male	5 087	8 937	14 026
Female	3 185	12 338	15 525
Do any work as a domestic worker for a wage, salary, or any payment in kind			
<b>Total</b>	<b>1 181</b>	<b>28 369</b>	<b>29 555</b>
Male	250	13 774	14 026
Female	931	14 592	15 525
Help unpaid in a family business of any kind			
<b>Total</b>	<b>72</b>	<b>29 478</b>	<b>29 555</b>
Male	26	13 998	14 026
Female	47	15 477	15 525
Do any work in his/her own or the family's plot, farm, food garden, cattle post or kraal or help in growing farm produce or in looking after animals for the household			
<b>Total</b>	<b>344</b>	<b>29 207</b>	<b>29 555</b>
Male	162	13 861	14 026
Female	182	15 342	15 525
Do any construction or major repair work on his/her own home, plot, cattle post or business or those of the family			
<b>Total</b>	<b>25</b>	<b>29 525</b>	<b>29 555</b>
Male	18	14 006	14 026
Female	*	15 516	15 525



**2. Estimated population of working age (15-65 years)**  
**2.2 By economic activity, involvement and sex (concluded)**

1 000

<b>Economic activity and sex</b>	<b>Involved**</b>	<b>Not involved</b>	<b>Total</b>
Catch any fish, prawns, shells, wild animals or other food for sale or family food			
<b>Total</b>	*	<b>29 546</b>	<b>29 555</b>
Male	*	14 019	14 026
Female	-	15 523	15 525
Beg for money or food in public			
<b>Total</b>	*	<b>29 548</b>	<b>29 555</b>
Male	*	14 022	14 026
Female	*	15 522	15 525
Involved in at least one of these activities except begging			
<b>Total</b>	<b>11 499</b>	<b>18 056</b>	<b>29 555</b>
Male	6 417	7 609	14 026
Female	5 080	10 446	15 525

\* For all values of 10 000 or lower the sample size is too small for reliable estimates.

\*\* In this table people who are normally engaged in an economic activity but were temporarily absent from work are not counted as involved.  
 Due to rounding numbers do not necessarily add up to totals.

2. Estimated population of working age (15-65 years)

2.3 By population group, sex and labour market status

2.3.1 Official definition of unemployment

Population group	Male						Female						Total					
	Total	Not economically active	Economically active				Total	Not economically active	Economically active				Total	Not economically active	Economically active			
			Total	Workers	Unemployed	Rate			Total	Workers	Unemployed	Rate			Total	Workers	Unemployed	Rate
	N (1 000)						N (1 000)						N (1 000)					
<b>All population groups</b>	<b>14 026</b>	<b>5 112</b>	<b>8 914</b>	<b>6 445</b>	<b>2 469</b>	<b>27.7</b>	<b>15 525</b>	<b>7 627</b>	<b>7 898</b>	<b>5 118</b>	<b>2 780</b>	<b>35.2</b>	<b>29 555</b>	<b>12 740</b>	<b>16 815</b>	<b>11 565</b>	<b>5 250</b>	<b>31.2</b>
Black African	10 826	4 320	6 506	4 353	2 153	33.1	12 097	6 193	5 903	3 465	2 438	41.3	22 923	10 514	12 409	7 818	4 592	37.0
Coloured	1 263	352	912	726	186	20.4	1 447	583	863	657	206	23.9	2 710	935	1 775	1 383	392	22.1
Indian/Asian	425	102	324	265	59	18.2	454	232	223	159	64	28.8	880	333	547	424	123	22.5
White	1 502	336	1 166	1 095	71	6.1	1 519	615	904	833	71	7.8	3 023	951	2 072	1 930	142	6.9

Totals include other and unspecified population groups.  
 Due to rounding numbers do not necessarily add up to totals.

2. Estimated population of working age (15-65 years)

2.3 By population group, sex and labour market status

2.3.2 Expanded definition of unemployment

Population group	Male						Female						Total					
	Total	Not economically active	Economically active				Total	Not economically active	Economically active				Total	Not economically active	Economically active			
			Total	Workers	Unemployed	Rate			Total	Workers	Unemployed	Rate			Total	Workers	Unemployed	Rate
	N (1 000)						N (1 000)						N (1 000)					
<b>All population groups</b>	<b>14 026</b>	<b>3 966</b>	<b>10 060</b>	<b>6 445</b>	<b>3 615</b>	<b>35.9</b>	<b>15 525</b>	<b>5 602</b>	<b>9 923</b>	<b>5 118</b>	<b>4 805</b>	<b>48.4</b>	<b>29 555</b>	<b>9 569</b>	<b>19 986</b>	<b>11 565</b>	<b>8 421</b>	<b>42.1</b>
Black African	10 826	3 260	7 566	4 353	3 213	42.5	12 097	4 313	7 783	3 465	4 318	55.5	22 923	7 573	15 350	7 818	7 532	49.1
Coloured	1 263	302	961	726	235	24.5	1 447	485	962	657	304	31.6	2 710	787	1 923	1 383	540	28.1
Indian/Asian	425	93	332	265	67	20.2	454	218	236	159	78	32.9	880	311	569	424	145	25.5
White	1 502	309	1 193	1 095	98	8.2	1 519	582	937	833	104	11.1	3 023	891	2 132	1 930	202	9.5

Totals include other and unspecified population groups.  
Due to rounding numbers do not necessarily add up to totals.

2. Estimated population of working age (15-65 years)

2.4 By province, sex and labour market status

2.4.1 Official definition of unemployment

Province	Male						Female						Total					
	Total	Not economically active	Economically active				Total	Not economically active	Economically active				Total	Not economically active	Economically active			
			Total	Workers	Unemployed	Rate			Total	Workers	Unemployed	Rate			Total	Workers	Unemployed	Rate
			N (1 000)						%	N (1 000)					%	N (1 000)		
<b>RSA</b>	<b>14 026</b>	<b>5 112</b>	<b>8 914</b>	<b>6 445</b>	<b>2 469</b>	<b>27.7</b>	<b>15 525</b>	<b>7 627</b>	<b>7 898</b>	<b>5 118</b>	<b>2 780</b>	<b>35.2</b>	<b>29 555</b>	<b>12 740</b>	<b>16 815</b>	<b>11 565</b>	<b>5 250</b>	<b>31.2</b>
Western Cape	1 570	397	1 173	958	215	18.3	1 684	665	1 019	789	230	22.6	3 254	1 062	2 192	1 747	445	20.3
Eastern Cape	1 673	801	871	618	253	29.1	2 062	1 129	934	643	291	31.2	3 735	1 930	1 805	1 261	545	30.2
Northern Cape	257	80	177	139	38	21.3	272	133	138	85	54	38.7	528	213	315	224	91	28.9
Free State	879	274	605	444	160	26.5	927	418	509	316	193	38.0	1 806	692	1 114	760	354	31.8
KwaZulu-Natal	2 794	1 109	1 685	1 113	572	33.9	3 322	1 732	1 590	999	591	37.2	6 116	2 841	3 275	2 112	1 163	35.5
North West	1 185	465	720	530	190	26.4	1 215	699	516	299	217	42.0	2 400	1 165	1 236	829	407	32.9
Gauteng	3 440	933	2 507	1 827	681	27.1	3 290	1 260	2 030	1 279	750	37.0	6 732	2 193	4 539	3 108	1 431	31.5
Mpumalanga	954	372	582	428	154	26.4	1 023	543	480	311	170	35.3	1 977	915	1 062	739	324	30.5
Limpopo	1 275	680	595	388	207	34.7	1 730	1 048	682	398	284	41.6	3 005	1 728	1 277	786	491	38.4

Due to rounding numbers do not necessarily add up to totals.

Totals include other and unspecified population groups.

Due to rounding numbers do not necessarily add up to totals.

2. Estimated population of working age (15-65 years)

2.4 By province, sex and labour market status

2.4.2 Expanded definition of unemployment

Province	Male						Female						Total					
	Total	Not economically active	Economically active				Total	Not economically active	Economically active				Total	Not economically active	Economically active			
			Total	Workers	Unemployed	Rate			Total	Workers	Unemployed	Rate			Total	Workers	Unemployed	Rate
	N (1 000)					%	N (1 000)					%	N (1 000)					%
<b>RSA</b>	<b>14 026</b>	<b>3 966</b>	<b>10 060</b>	<b>6 445</b>	<b>3 615</b>	<b>35.9</b>	<b>15 525</b>	<b>5 602</b>	<b>9 923</b>	<b>5 118</b>	<b>4 805</b>	<b>48.4</b>	<b>29 555</b>	<b>9 569</b>	<b>19 986</b>	<b>11 565</b>	<b>8 421</b>	<b>42.1</b>
Western Cape	1 570	349	1 221	958	263	21.5	1 684	577	1 107	789	318	28.7	3 254	926	2 328	1 747	581	25.0
Eastern Cape	1 673	623	1 050	618	432	41.1	2 062	863	1 200	643	557	46.4	3 735	1 486	2 249	1 261	989	44.0
Northern Cape	257	61	196	139	56	28.8	272	99	173	85	88	50.8	528	160	368	224	144	39.1
Free State	879	233	646	444	202	31.2	927	304	623	316	307	49.3	1 806	537	1 269	760	509	40.1
KwaZulu-Natal	2 794	838	1 956	1 113	843	43.1	3 322	1 316	2 005	999	1 007	50.2	6 116	2 154	3 962	2 112	1 850	46.7
North West	1 185	354	831	530	301	36.3	1 215	499	716	299	417	58.2	2 400	853	1 548	829	719	46.4
Gauteng	3 440	717	2 724	1 827	897	32.9	3 290	934	2 356	1 279	1 077	45.7	6 732	1 651	5 081	3 108	1 974	38.8
Mpumalanga	954	280	674	428	246	36.5	1 023	365	658	311	348	52.8	1 977	645	1 333	739	594	44.6
Limpopo	1 275	512	763	388	375	49.1	1 730	645	1 085	398	687	63.3	3 005	1 157	1 848	786	1 062	57.5

Due to rounding numbers do not necessarily add up to totals.

Totals include other and unspecified population groups.

Due to rounding numbers do not necessarily add up to totals.

2. Estimated population of working age (15-65 years)  
2.5 By highest level of education, sex and labour market status  
2.5.1 Official definition of unemployment  
2.5.1.1 All population groups

	Male						Female						Total					
	Total	Not economically active	Economically active				Total	Not economically active	Economically active				Total	Not economically active	Economically active			
			Total	Workers	Unemployed	Rate			Total	Workers	Unemployed	Rate			Total	Workers	Unemployed	Rate
Highest level of education	N (1 000)						N (1 000)						N (1 000)					
<b>Total</b>	<b>14 026</b>	<b>5 112</b>	<b>8 914</b>	<b>6 445</b>	<b>2 469</b>	<b>27.7</b>	<b>15 525</b>	<b>7 627</b>	<b>7 898</b>	<b>5 118</b>	<b>2 780</b>	<b>35.2</b>	<b>29 555</b>	<b>12 740</b>	<b>16 815</b>	<b>11 565</b>	<b>5 250</b>	<b>31.2</b>
None	801	318	482	388	94	19.6	1 238	773	465	360	105	22.6	2 039	1 091	948	748	199	21.0
Grade 0 to Grade 3/ Std 1	582	214	368	282	86	23.4	610	327	283	214	69	24.4	1 192	541	652	497	155	23.8
Grade 4/ Std 2	431	149	282	197	85	30.2	470	248	222	155	67	30.2	901	397	504	352	152	30.2
Grade 5/ Std 3	603	243	361	269	91	25.3	537	282	255	170	86	33.6	1 141	525	616	439	177	28.7
Grade 6/ Std 4	736	293	443	313	130	29.3	766	406	360	242	118	32.8	1 503	699	803	555	248	30.9
Grade 7/ Std 5	1 154	515	640	448	191	29.9	1 212	664	547	344	203	37.1	2 366	1 179	1 187	793	394	33.2
Grade 8/ Std 6	1 399	666	734	494	240	32.7	1 455	820	635	415	220	34.6	2 855	1 486	1 369	909	460	33.6
Grade 9/ Std 7	1 468	796	672	434	238	35.4	1 553	1 003	551	288	263	47.7	3 021	1 799	1 223	722	500	40.9
Grade 10/ Std 8	1 485	642	843	583	261	30.9	1 714	978	736	438	298	40.5	3 200	1 620	1 579	1 020	559	35.4
Grade 11/ Std 9	1 183	505	679	415	263	38.8	1 484	790	694	316	379	54.5	2 668	1 295	1 373	731	642	46.8
Grade 12/ Std 10	2 795	637	2 159	1 508	651	30.2	3 067	1 078	1 989	1 193	796	40.0	5 862	1 714	4 148	2 701	1 447	34.9
NTC I - NTC III	140	26	114	97	18	15.4	58	23	35	21	14	40.6	198	49	149	118	32	21.3
Dipl./cert. with Grade 11/ Std 9 or lower	94	11	83	70	13	15.2	126	32	93	72	21	22.5	220	44	176	143	34	19.0
Dipl./cert. with Grade 12/ Std 10	572	44	528	466	62	11.8	726	107	619	516	103	16.7	1 298	151	1 147	982	165	14.4
Degree and higher	486	32	454	422	31	6.9	426	66	360	331	29	8.1	914	98	816	755	60	7.4
Other	11	*	*	*	-	2.9	*	*	*	*	*	42.7	19	*	*	*	*	13.5
Unspecified	83	17	66	52	15	22.1	75	26	49	41	*	15.9	158	43	115	93	22	19.4

\* For all values of 10 000 or lower the sample size is too small for reliable estimates.  
Due to rounding numbers do not necessarily add up to totals.

2. Estimated population of working age (15-65 years)  
 2.5 By highest level of education, sex and labour market status  
 2.5.1 Official definition of unemployment  
 2.5.1.2 Black African

	Male						Female						Total					
	Total	Not economically active	Economically active				Total	Not economically active	Economically active				Total	Not economically active	Economically active			
			Total	Workers	Unemployed	Rate			Total	Workers	Unemployed	Rate			Total	Workers	Unemployed	Rate
Highest level of education	N (1 000)						N (1 000)						N (1 000)					
<b>Total</b>	<b>10 826</b>	<b>4 320</b>	<b>6 506</b>	<b>4 353</b>	<b>2 153</b>	<b>33.1</b>	<b>12 097</b>	<b>6 193</b>	<b>5 903</b>	<b>3 465</b>	<b>2 438</b>	<b>41.3</b>	<b>22 923</b>	<b>10 514</b>	<b>12 409</b>	<b>7 818</b>	<b>4 592</b>	<b>37.0</b>
None	744	298	446	354	92	20.6	1 154	721	433	336	97	22.5	1 898	1 019	879	690	189	21.5
Grade 0 to Grade 3/ Std 1	535	201	333	253	81	24.3	563	301	262	197	65	24.8	1 098	502	596	450	146	24.5
Grade 4/ Std 2	391	137	254	175	79	31.0	423	225	197	135	62	31.3	813	362	451	311	141	31.2
Grade 5/ Std 3	534	223	311	228	83	26.8	474	246	228	147	81	35.4	1 008	469	539	375	164	30.4
Grade 6/ Std 4	662	268	394	275	119	30.2	664	359	305	199	107	35.0	1 326	627	699	474	226	32.3
Grade 7/ Std 5	1 013	460	552	382	170	30.8	1 040	568	472	290	182	38.6	2 052	1 028	1 024	672	352	34.4
Grade 8/ Std 6	1 180	584	596	392	203	34.1	1 200	678	522	332	190	36.4	2 381	1 263	1 118	725	393	35.2
Grade 9/ Std 7	1 232	685	547	338	209	38.2	1 297	855	442	218	225	50.8	2 529	1 540	990	556	434	43.8
Grade 10/ Std 8	1 108	519	589	381	207	35.2	1 293	750	543	288	254	46.9	2 401	1 269	1 131	670	462	40.8
Grade 11/ Std 9	987	428	559	316	243	43.5	1 271	673	598	243	355	59.3	2 258	1 101	1 157	559	598	51.7
Grade 12/ Std 10	1 800	447	1 353	793	560	41.4	1 938	696	1 242	570	672	54.1	3 738	1 143	2 595	1 362	1 232	47.5
NTC I - NTC III	59	19	40	27	13	31.7	36	12	24	11	13	52.2	95	31	64	39	25	39.4
Dipl./cert. with Grade 11/ Std 9 or lower	54	*	48	39	*	19.9	69	13	56	38	18	32.1	122	18	104	76	28	26.5
Dipl./cert. with Grade 12/ Std 10	302	23	280	228	52	18.6	442	52	390	298	93	23.7	745	75	670	526	145	21.6
Degree and higher	157	*	150	133	18	11.7	176	19	157	139	18	11.5	333	25	308	272	36	11.6
Other	*	*	*	*	-	22.4	*	*	*	-	*	75.8	*	*	*	*	*	55.2
Unspecified	67	14	53	39	14	25.8	52	22	31	23	*	24.1	119	35	84	63	21	25.2

\* For all values of 10 000 or lower the sample size is too small for reliable estimates.  
 Due to rounding numbers do not necessarily add up to totals.

2. Estimated population of working age (15-65 years)  
 2.5 By highest level of education, sex and labour market status  
 2.5.1 Official definition of unemployment  
 2.5.1.3 Coloured

	Male						Female						Total					
	Total	Not economically active	Economically active				Total	Not economically active	Economically active				Total	Not economically active	Economically active			
			Total	Workers	Unemployed	Rate			Total	Workers	Unemployed	Rate			Total	Workers	Unemployed	Rate
Highest level of education	N (1 000)					%	N (1 000)					%	N (1 000)					%
<b>Total</b>	<b>1 263</b>	<b>352</b>	<b>912</b>	<b>726</b>	<b>186</b>	<b>20.4</b>	<b>1 447</b>	<b>583</b>	<b>863</b>	<b>657</b>	<b>206</b>	<b>23.9</b>	<b>2 710</b>	<b>935</b>	<b>1 775</b>	<b>1 383</b>	<b>392</b>	<b>22.1</b>
None	51	16	35	33	*	6.5	69	37	31	24	*	24.5	120	54	67	57	*	14.9
Grade 0 to Grade 3/ Std 1	44	12	32	28	*	12.6	41	21	20	17	*	17.1	86	34	52	45	*	14.3
Grade 4/ Std 2	36	11	26	20	*	23.2	42	19	23	18	*	22.9	79	30	49	38	11	23.1
Grade 5/ Std 3	65	19	46	38	*	17.2	52	26	26	22	*	15.2	117	45	72	60	12	16.5
Grade 6/ Std 4	68	22	46	35	11	23.5	85	31	53	42	11	20.7	152	53	99	77	22	22.0
Grade 7/ Std 5	118	38	79	60	19	23.7	141	76	65	48	18	27.4	259	114	144	108	37	25.4
Grade 8/ Std 6	160	55	105	77	28	26.5	184	89	95	68	27	28.7	345	145	200	145	55	27.5
Grade 9/ Std 7	144	56	88	65	23	25.8	165	84	81	52	29	35.5	308	140	169	117	51	30.4
Grade 10/ Std 8	166	45	120	86	34	28.5	178	75	103	76	26	25.6	343	120	223	162	61	27.1
Grade 11/ Std 9	87	33	54	43	11	20.3	100	42	58	43	15	26.1	187	75	112	86	26	23.3
Grade 12/ Std 10	229	32	197	168	29	14.6	279	65	214	159	55	25.6	508	97	411	327	83	20.3
NTC I - NTC III	12	*	11	*	*	21.0	*	*	*	*	*	17.8	19	*	15	12	*	20.1
Dipl./ cert. with Grade 11/ Std 9 or lower	*	*	*	*	-	6.7	*	*	*	*	-	0.0	18	*	14	14	-	2.6
Dipl./ cert. with Grade 12/ Std 10	39	*	37	32	*	13.6	59	*	54	50	*	5.8	99	*	90	82	*	9.0
Degree and higher	27	*	24	21	*	10.3	22	*	20	19	*	4.0	49	*	44	40	*	7.4
Other	*	*	-	-	-	-	*	*	-	-	-	0.0	*	*	-	-	-	0.0
Unspecified	*	*	*	*	*	18.3	11	*	*	*	-	4.0	19	*	14	12	*	10.0

\* For all values of 10 000 or lower the sample size is too small for reliable estimates.  
 Due to rounding numbers do not necessarily add up to totals.



2. Estimated population of working age (15-65 years)  
2.5 By highest level of education, sex and labour market status  
2.5.1 Official definition of unemployment  
2.5.1.4 Indian/Asian

	Male						Female						Total					
	Total	Not economically active	Economically active				Total	Not economically active	Economically active				Total	Not economically active	Economically active			
			Total	Workers	Unemployed	Rate			Total	Workers	Unemployed	Rate			Total	Workers	Unemployed	Rate
Highest level of education	N (1 000)					%	N (1 000)					%	N (1 000)					%
<b>Total</b>	<b>425</b>	<b>102</b>	<b>324</b>	<b>265</b>	<b>59</b>	<b>18.2</b>	<b>454</b>	<b>232</b>	<b>223</b>	<b>159</b>	<b>64</b>	<b>28.8</b>	<b>880</b>	<b>333</b>	<b>547</b>	<b>424</b>	<b>123</b>	<b>22.5</b>
None	*	*	*	*	-	0.0	*	*	-	-	-	0.0	11	*	*	*	-	0.0
Grade 0 to Grade 3/ Std 1	*	-	*	*	*	42.1	*	*	*	-	*	72.7	*	*	*	*	*	49.1
Grade 4/ Std 2	*	*	*	*	*	29.8	*	*	*	*	-	0.0	*	*	*	*	*	17.8
Grade 5/ Std 3	*	*	*	*	-	0.0	*	*	*	*	*	60.3	12	*	*	*	*	33.4
Grade 6/ Std 4	*	*	*	*	-	0.0	14	13	*	*	-	0.0	19	15	*	*	-	0.0
Grade 7/ Std 5	12	*	*	*	*	15.2	20	14	*	*	*	36.5	32	20	12	*	*	26.4
Grade 8/ Std 6	27	*	18	12	*	30.1	36	27	*	*	*	23.7	63	36	27	19	*	27.9
Grade 9/ Std 7	30	11	19	16	*	17.4	30	16	14	*	*	45.2	60	27	33	23	*	29.2
Grade 10/ Std 8	53	19	34	25	*	27.3	61	39	22	13	*	41.7	114	58	56	38	18	33.0
Grade 11/ Std 9	48	15	34	26	*	23.3	37	19	18	12	*	30.0	85	34	52	38	13	25.6
Grade 12/ Std 10	179	32	147	121	26	17.8	187	71	116	83	33	28.4	366	103	263	204	59	22.5
NTC I - NTC III	*	-	*	*	-	15.5	*	*	-	-	-	-	*	*	*	*	-	15.5
Dipl./cert. with Grade 11/ Std 9 or lower	*	-	*	*	*	9.2	*	*	*	*	*	43.6	*	*	*	*	*	18.4
Dipl./cert. with Grade 12/ Std 10	20	-	20	17	*	12.0	17	*	15	14	*	5.6	37	*	35	32	*	9.2
Degree and higher	29	*	27	26	*	3.1	21	*	15	12	*	17.0	50	*	41	38	*	8.0
Unspecified	*	-	*	*	-	0.0	*	-	*	*	-	0.0	*	-	*	*	-	0.0

\* For all values of 10 000 or lower the sample size is too small for reliable estimates.  
Due to rounding numbers do not necessarily add up to totals.

2. Estimated population of working age (15-65 years)  
 2.5 By highest level of education, sex and labour market status  
 2.5.1 Official definition of unemployment  
 2.5.1.5 White

	Male						Female						Total					
	Total	Not economically active	Economically active				Total	Not economically active	Economically active				Total	Not economically active	Economically active			
			Total	Workers	Unemployed	Rate			Total	Workers	Unemployed	Rate			Total	Workers	Unemployed	Rate
Highest level of education	N (1 000)					%	N (1 000)					%	N (1 000)					%
<b>Total</b>	<b>1 502</b>	<b>336</b>	<b>1 166</b>	<b>1 095</b>	<b>71</b>	<b>6.1</b>	<b>1 519</b>	<b>615</b>	<b>904</b>	<b>833</b>	<b>71</b>	<b>7.8</b>	<b>3 023</b>	<b>951</b>	<b>2 072</b>	<b>1 930</b>	<b>142</b>	<b>6.9</b>
None	*	*	-	-	-	-	*	*	*	*	-	0.0	*	*	*	*	-	0.0
Grade 0 to Grade 3/ Std 1	-	-	-	-	-	-	-	-	-	-	-	0.0	-	-	-	-	-	0.0
Grade 4/ Std 2	*	*	*	*	-	0.0	*	*	-	-	-	-	*	*	*	*	-	0.0
Grade 5/ Std 3	*	*	*	*	-	0.0	*	*	-	-	-	-	*	*	*	*	-	0.0
Grade 6/ Std 4	*	*	-	-	-	-	*	*	*	*	-	41.9	*	*	*	*	-	41.9
Grade 7/ Std 5	11	*	*	*	*	73.1	*	*	*	*	*	25.4	21	15	*	*	*	42.2
Grade 8/ Std 6	31	16	14	11	*	24.0	34	26	*	*	-	2.3	65	42	23	19	*	16.0
Grade 9/ Std 7	61	43	18	15	*	13.8	61	47	14	11	*	22.3	121	90	32	26	*	17.5
Grade 10/ Std 8	158	59	99	89	*	10.0	181	113	68	60	*	12.0	339	172	167	149	*	10.8
Grade 11/ Std 9	61	29	32	31	*	3.3	77	56	21	17	*	16.5	138	85	53	48	*	9.2
Grade 12/ Std 10	584	126	458	423	35	7.7	659	244	415	378	37	8.8	1 243	370	873	801	72	8.2
NTC I - NTC III	66	*	61	59	*	3.8	15	*	*	*	*	14.1	81	13	68	65	*	4.8
Dipl./cert. with Grade 11/ Std 9 or lower	27	*	23	21	*	8.8	44	17	27	25	*	7.9	71	21	50	46	*	8.3
Dipl./cert. with Grade 12/ Std 10	209	18	191	189	*	1.4	207	47	160	153	*	4.2	416	65	351	342	*	2.7
Degree and higher	273	20	253	242	*	4.1	207	39	168	161	*	4.6	482	59	423	404	18	4.3
Other	*	*	*	*	-	0.0	*	*	*	*	-	0.0	*	*	*	*	-	0.0
Unspecified	*	*	*	*	-	0.0	*	*	*	*	-	0.0	18	*	16	16	-	0.0

\* For all values of 10 000 or lower the sample size is too small for reliable estimates.  
 Due to rounding numbers do not necessarily add up to totals.

2. Estimated population of working age (15-65 years)  
2.5 By highest level of education, sex and labour market status  
2.5.2 Expanded definition of unemployment  
2.5.2.1 All population groups

	Male						Female						Total					
	Total	Not economically active	Economically active				Total	Not economically active	Economically active				Total	Not economically active	Economically active			
			Total	Workers	Unemployed	Rate			Total	Workers	Unemployed	Rate			Total	Workers	Unemployed	Rate
	N (1 000)						N (1 000)						N (1 000)					
<b>Highest level of education</b>	N (1 000)						N (1 000)						N (1 000)					
<b>Total</b>	<b>14 026</b>	<b>3 966</b>	<b>10 060</b>	<b>6 445</b>	<b>3 615</b>	<b>35.9</b>	<b>15 525</b>	<b>5 602</b>	<b>9 923</b>	<b>5 118</b>	<b>4 805</b>	<b>48.4</b>	<b>29 555</b>	<b>9 569</b>	<b>19 986</b>	<b>11 565</b>	<b>8 421</b>	<b>42.1</b>
None	801	240	561	388	172	30.8	1 238	615	623	360	263	42.2	2 039	855	1 183	748	435	36.8
Grade 0 to Grade 3/ Std 1	582	141	441	282	159	36.0	610	228	382	214	168	43.9	1 192	369	823	497	327	39.7
Grade 4/ Std 2	431	104	327	197	130	39.8	470	174	295	155	141	47.6	901	278	623	352	271	43.5
Grade 5/ Std 3	603	175	429	269	159	37.2	537	204	333	170	163	49.1	1 141	379	762	439	323	42.4
Grade 6/ Std 4	736	223	513	313	200	38.9	766	283	482	242	240	49.8	1 503	506	996	555	441	44.2
Grade 7/ Std 5	1 154	419	735	448	287	39.0	1 212	476	736	344	391	53.2	2 366	895	1 471	793	678	46.1
Grade 8/ Std 6	1 399	543	857	494	363	42.4	1 455	631	824	415	409	49.6	2 855	1 174	1 681	909	772	45.9
Grade 9/ Std 7	1 468	682	786	434	352	44.7	1 553	797	757	288	469	61.9	3 021	1 478	1 543	722	821	53.2
Grade 10/ Std 8	1 485	524	961	583	379	39.4	1 714	772	942	438	505	53.5	3 200	1 296	1 904	1 020	883	46.4
Grade 11/ Std 9	1 183	407	777	415	361	46.5	1 484	558	926	316	610	65.9	2 668	965	1 703	731	972	57.1
Grade 12/ Std 10	2 795	399	2 396	1 508	889	37.1	3 067	656	2 410	1 193	1 217	50.5	5 862	1 055	4 807	2 701	2 106	43.8
NTC I - NTC III	140	22	118	97	21	17.9	58	18	40	21	19	48.4	198	40	158	118	41	25.7
Dipl./cert. with Grade 11/ Std 9 or lower	94	*	85	70	15	17.5	126	26	99	72	27	27.3	220	35	185	143	42	22.8
Dipl./cert. with Grade 12/ Std 10	572	33	539	466	73	13.5	726	80	647	516	131	20.2	1 298	113	1 186	982	204	17.2
Degree and higher	486	29	457	422	34	7.6	426	57	370	331	38	10.4	914	86	828	755	73	8.8
Other	11	*	*	*	-	2.9	*	*	*	*	*	56.4	19	*	*	*	*	20.2
Unspecified	83	12	71	52	20	27.5	75	22	53	41	12	21.8	158	34	124	93	31	25.1

\* For all values of 10 000 or lower the sample size is too small for reliable estimates.  
Due to rounding numbers do not necessarily add up to totals.

2. Estimated population of working age (15-65 years)  
2.5 By highest level of education, sex and labour market status  
2.5.2 Expanded definition of unemployment  
2.5.2.2 Black African

	Male						Female						Total					
	Total	Not economically active	Economically active				Total	Not economically active	Economically active				Total	Not economically active	Economically active			
			Total	Workers	Unemployed	Rate			Total	Workers	Unemployed	Rate			Total	Workers	Unemployed	Rate
Highest level of education	N (1 000)						N (1 000)						N (1 000)					
<b>Total</b>	<b>10 826</b>	<b>3 260</b>	<b>7 566</b>	<b>4 353</b>	<b>3 213</b>	<b>42.5</b>	<b>12 097</b>	<b>4 313</b>	<b>7 783</b>	<b>3 465</b>	<b>4 318</b>	<b>55.5</b>	<b>22 923</b>	<b>7 573</b>	<b>15 350</b>	<b>7 818</b>	<b>7 532</b>	<b>49.1</b>
None	744	221	523	354	169	32.3	1 154	566	588	336	252	42.8	1 898	787	1 111	690	421	37.9
Grade 0 to Grade 3/ Std 1	535	131	404	253	152	37.5	563	206	357	197	160	44.7	1 098	337	761	450	311	40.9
Grade 4/ Std 2	391	92	299	175	124	41.4	423	154	268	135	133	49.5	813	246	567	311	256	45.2
Grade 5/ Std 3	534	159	375	228	147	39.2	474	174	300	147	153	51.0	1 008	333	675	375	300	44.4
Grade 6/ Std 4	662	203	459	275	184	40.1	664	243	421	199	222	52.8	1 326	446	880	474	406	46.2
Grade 7/ Std 5	1 013	372	640	382	258	40.3	1 040	395	645	290	355	55.0	2 052	767	1 285	672	613	47.7
Grade 8/ Std 6	1 180	473	707	392	315	44.5	1 200	508	692	332	360	52.0	2 381	981	1 400	725	675	48.2
Grade 9/ Std 7	1 232	579	653	338	315	48.2	1 297	665	632	218	415	65.6	2 529	1 244	1 286	556	730	56.8
Grade 10/ Std 8	1 108	414	694	381	313	45.1	1 293	565	728	288	439	60.4	2 401	979	1 422	670	752	52.9
Grade 11/ Std 9	987	336	651	316	335	51.5	1 271	451	820	243	577	70.3	2 258	787	1 470	559	912	62.0
Grade 12/ Std 10	1 800	228	1 572	793	779	49.6	1 938	310	1 627	570	1 058	65.0	3 738	538	3 199	1 362	1 837	57.4
NTC I - NTC III	59	16	42	27	15	35.7	36	*	29	11	17	60.4	95	24	71	39	33	45.7
Dipl./cert. with Grade 11/ Std 9 or lower	54	*	49	39	11	21.5	69	*	62	38	24	38.7	122	11	111	76	34	31.1
Dipl./cert. with Grade 12/ Std 10	302	15	288	228	60	20.8	442	29	413	298	115	27.9	745	44	701	526	175	25.0
Degree and higher	157	*	152	133	19	12.4	176	11	166	139	27	16.0	333	16	318	272	45	14.3
Other	*	*	*	*	-	22.4	*	*	*	-	*	79.2	*	*	*	*	*	59.4
Unspecified	67	*	58	39	19	32.3	52	18	35	23	11	32.1	119	27	92	63	30	32.2

\* For all values of 10 000 or lower the sample size is too small for reliable estimates.  
Due to rounding numbers do not necessarily add up to totals.

2. Estimated population of working age (15-65 years)  
 2.5 By highest level of education, sex and labour market status  
 2.5.2 Expanded definition of unemployment  
 2.5.2.3 Coloured

	Male						Female						Total					
	Total	Not economically active	Economically active				Total	Not economically active	Economically active				Total	Not economically active	Economically active			
			Total	Workers	Unemployed	Rate			Total	Workers	Unemployed	Rate			Total	Workers	Unemployed	Rate
Highest level of education	N (1 000)					%	N (1 000)					%	N (1 000)					%
<b>Total</b>	<b>1 263</b>	<b>302</b>	<b>961</b>	<b>726</b>	<b>235</b>	<b>24.5</b>	<b>1 447</b>	<b>485</b>	<b>962</b>	<b>657</b>	<b>304</b>	<b>31.6</b>	<b>2 710</b>	<b>787</b>	<b>1 923</b>	<b>1 383</b>	<b>540</b>	<b>28.1</b>
None	51	15	37	33	*	9.3	69	34	34	24	11	31.3	120	49	71	57	14	20.0
Grade 0 to Grade 3/ Std 1	44	*	34	28	*	18.3	41	18	24	17	*	29.5	86	28	58	45	13	22.9
Grade 4/ Std 2	36	11	26	20	*	23.6	42	17	26	18	*	30.4	79	27	52	38	14	27.0
Grade 5/ Std 3	65	15	50	38	12	23.6	52	21	31	22	*	29.7	117	36	81	60	21	25.9
Grade 6/ Std 4	68	18	50	35	15	29.8	85	25	60	42	17	29.2	152	43	110	77	32	29.5
Grade 7/ Std 5	118	33	85	60	25	29.0	141	61	80	48	33	40.6	259	93	165	108	57	34.6
Grade 8/ Std 6	160	46	115	77	38	32.9	184	74	111	68	43	38.7	345	119	226	145	81	35.7
Grade 9/ Std 7	144	49	95	65	30	31.3	165	70	94	52	42	44.6	308	119	189	117	72	38.0
Grade 10/ Std 8	166	41	124	86	38	30.8	178	64	114	76	38	33.1	343	105	239	162	76	31.9
Grade 11/ Std 9	87	29	58	43	15	25.5	100	35	64	43	22	33.5	187	64	122	86	36	29.7
Grade 12/ Std 10	229	25	204	168	35	17.4	279	52	227	159	68	30.0	508	77	431	327	104	24.1
NTC I - NTC III	12	*	11	*	*	21.0	*	*	*	*	*	17.8	19	*	15	12	*	20.1
Dipl./cert. with Grade 11/ Std 9 or lower	*	*	*	*	*	14.5	*	*	*	*	-	1.6	18	*	15	14	*	6.9
Dipl./cert. with Grade 12/ Std 10	39	*	37	32	*	13.6	59	*	55	50	*	8.7	99	*	92	82	*	10.7
Degree and higher	27	*	24	21	*	11.6	22	*	20	19	*	4.0	49	*	44	40	*	8.2
Other	*	*	-	-	-		*	*	-	-	-	0.0	*	*	-	-	-	0.0
Unspecified	*	*	*	*	*	18.3	11	*	*	*	-	5.6	19	*	14	12	*	10.8

\* For all values of 10 000 or lower the sample size is too small for reliable estimates.  
 Due to rounding numbers do not necessarily add up to totals.

2. Estimated population of working age (15-65 years)  
2.5 By highest level of education, sex and labour market status  
2.5.2 Expanded definition of unemployment  
2.5.2.4 Indian/Asian

	Male						Female						Total					
	Total	Not economically active	Economically active				Total	Not economically active	Economically active				Total	Not economically active	Economically active			
			Total	Workers	Unemployed	Rate			Total	Workers	Unemployed	Rate			Total	Workers	Unemployed	Rate
Highest level of education	N (1 000)					%	N (1 000)					%	N (1 000)					%
<b>Total</b>	<b>425</b>	<b>93</b>	<b>332</b>	<b>265</b>	<b>67</b>	<b>20.2</b>	<b>454</b>	<b>218</b>	<b>236</b>	<b>159</b>	<b>78</b>	<b>32.9</b>	<b>880</b>	<b>311</b>	<b>569</b>	<b>424</b>	<b>145</b>	<b>25.5</b>
None	*	*	*	*	-	0.0	*	*	-	-	-	0.0	11	*	*	*	-	0.0
Grade 0 to Grade 3/ Std 1	*	-	*	*	*	42.1	*	*	*	-	*	84.3	*	*	*	*	*	56.4
Grade 4/ Std 2	*	*	*	*	*	29.8	*	*	*	*	-	0.0	*	*	*	*	*	17.8
Grade 5/ Std 3	*	*	*	*	-	0.0	*	*	*	*	*	60.3	12	*	*	*	*	33.4
Grade 6/ Std 4	*	*	*	*	*	15.0	14	13	*	*	*	47.5	19	14	*	*	*	22.3
Grade 7/ Std 5	12	*	*	*	*	26.6	20	13	*	*	*	41.5	32	19	13	*	*	34.1
Grade 8/ Std 6	27	*	18	12	*	30.1	36	25	11	*	*	36.3	63	34	29	19	*	32.5
Grade 9/ Std 7	30	*	20	16	*	21.1	30	15	15	*	*	49.2	60	25	35	23	12	33.2
Grade 10/ Std 8	53	16	37	25	12	33.1	61	36	25	13	12	48.7	114	52	62	38	24	39.4
Grade 11/ Std 9	48	14	34	26	*	24.5	37	19	18	12	*	32.2	85	33	53	38	14	27.2
Grade 12/ Std 10	179	29	150	121	29	19.1	187	67	120	83	38	31.3	366	96	270	204	66	24.5
NTC I - NTC III	*	-	*	*	-	15.5	*	*	-	-	-		*	*	*	*	-	15.5
Dipl./cert. with Grade 11/ Std 9 or lower	*	-	*	*	*	9.2	*	*	*	*	*	43.6	*	*	*	*	*	18.4
Dipl./cert. with Grade 12/ Std 10	20	-	20	17	*	12.0	17	*	16	14	*	9.5	37	*	35	32	*	10.9
Degree and higher	29	*	27	26	*	3.1	21	*	15	12	*	17.0	50	*	41	38	*	8.0
Unspecified	*	-	*	*	-	0.0	*	-	*	*	-	0.0	*	-	*	*	-	0.0

\* For all values of 10 000 or lower the sample size is too small for reliable estimates.  
Due to rounding numbers do not necessarily add up to totals.

2. Estimated population of working age (15-65 years)  
2.5 By highest level of education, sex and labour market status  
2.5.2 Expanded definition of unemployment  
2.5.2.5 White

	Male						Female						Total					
	Total	Not economically active	Economically active				Total	Not economically active	Economically active				Total	Not economically active	Economically active			
			Total	Workers	Unemployed	Rate			Total	Workers	Unemployed	Rate			Total	Workers	Unemployed	Rate
Highest level of education	N (1 000)					%	N (1 000)					%	N (1 000)					%
<b>Total</b>	<b>1 502</b>	<b>309</b>	<b>1 193</b>	<b>1 095</b>	<b>98</b>	<b>8.2</b>	<b>1 519</b>	<b>582</b>	<b>937</b>	<b>833</b>	<b>104</b>	<b>11.1</b>	<b>3 023</b>	<b>891</b>	<b>2 132</b>	<b>1 930</b>	<b>202</b>	<b>9.5</b>
None	*	*	-	-	-	-	*	*	*	*	-	0.0	*	*	*	*	-	0.0
Grade 0 to Grade 3/ Std 1	-	-	-	-	-	-	-	-	-	-	-	0.0	-	-	-	-	-	0.0
Grade 4/ Std 2	*	*	*	*	-	0.0	*	*	-	-	-	-	*	*	*	*	-	0.0
Grade 5/ Std 3	*	-	*	*	*	29.7	*	*	-	-	-	-	*	*	*	*	*	29.7
Grade 6/ Std 4	*	*	*	-	*	100.0	*	*	*	*	-	41.9	*	*	*	*	*	60.3
Grade 7/ Std 5	11	*	*	*	*	81.1	*	*	*	*	*	28.1	21	14	*	*	*	50.8
Grade 8/ Std 6	31	15	16	11	*	31.2	34	25	*	*	*	12.6	65	40	25	19	*	24.3
Grade 9/ Std 7	61	42	18	15	*	15.4	61	45	15	11	*	30.3	121	88	34	26	*	22.2
Grade 10/ Std 8	158	54	104	89	15	14.5	181	106	75	60	15	20.1	339	160	179	149	30	16.9
Grade 11/ Std 9	61	28	33	31	*	7.4	77	53	23	17	*	25.9	138	81	57	48	*	15.7
Grade 12/ Std 10	584	116	468	423	45	9.6	659	227	432	378	54	12.4	1 243	344	899	801	98	10.9
NTC I - NTC III	66	*	62	59	*	5.3	15	*	*	*	*	17.9	81	12	69	65	*	6.6
Dipl./cert. with Grade 11/ Std 9 or lower	27	*	24	21	*	12.4	44	17	27	25	*	7.9	71	20	51	46	*	10.0
Dipl./cert. with Grade 12/ Std 10	209	15	194	189	*	2.9	207	45	162	153	*	5.6	416	60	356	342	15	4.2
Degree and higher	273	19	254	242	12	4.7	207	38	169	161	*	5.0	482	57	425	404	21	4.8
Other	*	*	*	*	-	0.0	*	-	*	*	*	38.6	*	*	*	*	*	7.4
Unspecified	*	*	*	*	-	0.0	*	*	*	*	-	0.0	18	*	16	16	-	0.0

\* For all values of 10 000 or lower the sample size is too small for reliable estimates.  
Due to rounding numbers do not necessarily add up to totals.

## 2. Estimated population of working age (15-65 years)

### 2.6 By definition of unemployment, whether work-related skills training had been received, sex and labour market status

Definition of unemployment and whether work-related skills training had been received	Male						Female						Total					
	Total	Not economically active	Economically active				Total	Not economically active	Economically active				Total	Not economically active	Economically active			
			Total	Workers	Unemployed	Rate			Total	Workers	Unemployed	Rate			Total	Workers	Unemployed	Rate
	N (1 000)						N (1 000)						N (1 000)					
<b>Official definition of unemployment</b>																		
<b>Total</b>	<b>14 026</b>	<b>5 112</b>	<b>8 914</b>	<b>6 445</b>	<b>2 469</b>	<b>27.7</b>	<b>15 525</b>	<b>7 627</b>	<b>7 898</b>	<b>5 118</b>	<b>2 780</b>	<b>35.2</b>	<b>29 555</b>	<b>12 740</b>	<b>16 815</b>	<b>11 565</b>	<b>5 250</b>	<b>31.2</b>
Yes	1 580	181	1 398	1 107	292	20.8	1 202	255	948	705	242	25.6	2 782	436	2 346	1 812	534	22.8
No	12 303	4 877	7 425	5 281	2 145	28.9	14 166	7 307	6 859	4 362	2 497	36.4	26 473	12 186	14 287	9 645	4 642	32.5
Don't know	134	46	87	54	33	37.6	150	61	89	50	40	44.5	284	107	177	104	73	41.1
Unspecified	*	*	*	*	-	0.0	*	*	*	*	*	60.4	17	11	*	*	*	24.2
<b>Expanded definition of unemployment</b>																		
<b>Total</b>	<b>14 026</b>	<b>3 966</b>	<b>10 060</b>	<b>6 445</b>	<b>3 615</b>	<b>35.9</b>	<b>15 525</b>	<b>5 602</b>	<b>9 923</b>	<b>5 118</b>	<b>4 805</b>	<b>48.4</b>	<b>29 555</b>	<b>9 569</b>	<b>19 986</b>	<b>11 565</b>	<b>8 421</b>	<b>42.1</b>
Yes	1 580	120	1 460	1 107	353	24.2	1 202	162	1 040	705	335	32.2	2 782	282	2 500	1 812	688	27.5
No	12 303	3 798	8 504	5 281	3 224	37.9	14 166	5 389	8 778	4 362	4 415	50.3	26 473	9 188	17 285	9 645	7 640	44.2
Don't know	134	42	92	54	37	40.7	150	49	101	50	51	50.9	284	91	193	104	89	46.0
Unspecified	*	*	*	*	*	20.6	*	*	*	*	*	77.6	17	*	*	*	*	48.3

\* For all values of 10 000 or lower the sample size is too small for reliable estimates.

Totals include unspecified sex.

Due to rounding numbers do not necessarily add up to totals.



### 3. Workers (employers, employees and self-employed)

#### 3.1 By main industry and sector

1 000

Main industry	Formal	Informal	Domestic	Unspecified	Total
<b>Total</b>	<b>8 223</b>	<b>2 265</b>	<b>1 005</b>	<b>73</b>	<b>11 565</b>
Agriculture, hunting, forestry and fishing	865	420	-	*	1 288
Mining and quarrying	509	*	-	*	514
Manufacturing	1 462	196	-	*	1 668
Electricity, gas and water supply	83	*	-	*	88
Construction	369	202	-	12	583
Wholesale and retail trade	1 489	869	-	14	2 373
Transport, storage and communication	464	127	-	*	598
Financial intermediation, insurance, real estate and business services	940	78	-	*	1 027
Community, social and personal services	2 006	165	-	12	2 183
Private households with employed persons	*	196	1 005	-	1 202
Other	27	*	-	-	-
Unspecified	*	*	-	*	13

\* For all values of 10 000 or lower the sample size is too small for reliable estimates.  
Due to rounding numbers do not necessarily add up to totals.

### 3. Workers (employers, employees and self-employed)

#### 3.2 By main occupation and sector

1 000

Main occupation	Formal	Informal	Domestic	Unspecified	Total
<b>Total</b>	<b>8 223</b>	<b>2 265</b>	<b>1 005</b>	<b>73</b>	<b>11 565</b>
Legislators, senior officials and managers	613	59	-	*	677
Professionals	510	24	-	*	536
Technical and associate professionals	1 083	84	-	*	1 174
Clerks	1 107	22	-	*	1 137
Service workers and shop and market sales workers	1 014	293	-	*	1 312
Skilled agricultural and fishery workers	86	316	-	*	402
Craft and related trades workers	986	404	-	15	1 405
Plant and machine operators and assemblers	1 091	137	-	*	1 234
Elementary occupation	1 703	922	-	20	2 645
Domestic workers	-	-	1 005	-	1 005
Other	22	*	-	-	25
Unspecified	*	*	-	*	13

\* For all values of 10 000 or lower the sample size is too small for reliable estimates.

Due to rounding numbers do not necessarily add up to totals.

### 3. Workers (employers, employees and self-employed)

#### 3.3 By population group, sex and sector

1 000

Population group and sex	Formal	Informal	Domestic	Unspecified	Total
<b>All population groups</b>					
<b>Total</b>	<b>8 223</b>	<b>2 265</b>	<b>1 005</b>	<b>73</b>	<b>11 565</b>
Male	5 070	1 280	51	44	6 445
Female	3 152	984	953	29	5 118
<b>Black African</b>					
<b>Total</b>	<b>4 870</b>	<b>1 999</b>	<b>893</b>	<b>55</b>	<b>7 818</b>
Male	3 163	1 110	49	32	4 353
Female	1 707	889	845	24	3 465
<b>Coloured</b>					
<b>Total</b>	<b>1 154</b>	<b>119</b>	<b>107</b>	*	<b>1 383</b>
Male	637	84	*	*	726
Female	517	35	104	*	657
<b>Indian/Asian</b>					
<b>Total</b>	<b>384</b>	<b>36</b>	*	*	<b>424</b>
Male	240	23	-	*	265
Female	143	13	*	*	159
<b>White</b>					
<b>Total</b>	<b>1 806</b>	<b>109</b>	*	<b>12</b>	<b>1 930</b>
Male	1 025	62	-	*	1 095
Female	779	47	*	*	833

\* For all values of 10 000 or lower the sample size is too small for reliable estimates.

Totals include other and unspecified population groups.

Due to rounding numbers do not necessarily add up to totals.

### 3. Workers (employers, employees and self-employed)

#### 3.4 By main industry, population group and sex

##### 3.4.1 All sectors

1 000

Main industry	Black African			Coloured			Indian/Asian			White			Total		
	Total	Male	Female	Total	Male	Female	Total	Male	Female	Total	Male	Female	Total	Male	Female
<b>Total</b>	<b>7 818</b>	<b>4 353</b>	<b>3 465</b>	<b>1 383</b>	<b>726</b>	<b>657</b>	<b>424</b>	<b>265</b>	<b>159</b>	<b>1 930</b>	<b>1 095</b>	<b>833</b>	<b>11 565</b>	<b>6 445</b>	<b>5 118</b>
Agriculture, hunting, forestry and fishing	981	614	367	236	155	81	-	-	-	71	56	15	1 288	825	463
Mining and quarrying	436	425	*	*	*	-	*	*	-	72	62	*	514	493	20
Manufacturing	949	602	347	276	155	121	109	71	38	333	231	102	1 668	1 059	609
Electricity, gas and water supply	64	45	20	*	*	*	*	-	*	15	12	*	88	64	24
Construction	431	397	34	69	67	*	15	13	*	66	58	*	583	537	46
Wholesale and retail trade	1 634	791	843	244	111	133	125	80	45	367	212	155	2 373	1 197	1 176
Transport, storage and communication	366	314	52	61	52	*	40	29	11	129	84	45	598	479	120
Financial intermediation, insurance, real estate and business services	463	300	163	115	48	67	53	31	22	395	202	193	1 027	582	445
Community, social and personal services	1 407	648	759	239	103	136	76	39	38	458	165	292	2 183	956	1 225
Private households with employed persons	1 068	205	863	129	23	106	*	-	*	*	-	*	1 202	229	973
Exterior organisations and foreign governments	*	*	*	-	-	-	-	-	-	-	-	-	*	*	*
Other	*	*	*	*	*	-	*	*	-	15	*	*	27	17	*
Unspecified	*	*	*	*	-	*	-	-	-	*	*	*	13	*	*

\* For values of 10 000 or lower the sample size is too small for reliable estimates.

Totals include other and unspecified population groups.

Due to rounding numbers do not necessarily add up to totals.

### 3. Workers (employers, employees and self-employed)

#### 3.4 By main industry, population group and sex

##### 3.4.2 Formal sector

1 000

Main industry	Black African			Coloured			Indian/Asian			White			Total		
	Total	Male	Female	Total	Male	Female	Total	Male	Female	Total	Male	Female	Total	Male	Female
<b>Total</b>	<b>4 870</b>	<b>3 163</b>	<b>1 707</b>	<b>1 154</b>	<b>637</b>	<b>517</b>	<b>384</b>	<b>240</b>	<b>143</b>	<b>1 806</b>	<b>1 025</b>	<b>779</b>	<b>8 223</b>	<b>5 070</b>	<b>3 152</b>
Agriculture, hunting, forestry and fishing	572	379	192	226	148	78	-	-	-	67	52	15	865	580	285
Mining and quarrying	432	422	*	*	*	-	*	*	-	71	61	*	509	489	20
Manufacturing	783	533	250	261	147	114	100	67	32	317	221	96	1 462	968	494
Electricity, gas and water supply	62	44	19	*	*	*	*	-	*	12	*	*	83	60	23
Construction	250	229	21	49	47	*	12	-	*	55	47	*	369	336	33
Wholesale and retail trade	828	482	346	216	94	122	108	66	41	335	192	144	1 489	836	653
Transport, storage and communication	246	204	42	53	44	*	39	28	11	124	79	45	464	356	109
Financial intermediation, insurance, real estate and business services	409	267	142	110	45	65	53	30	22	368	190	178	940	533	407
Community, social and personal services	1 273	595	678	225	99	126	70	36	34	438	162	275	2 006	891	1 113
Private households with employed persons	-	-	-	*	*	-	-	-	-	-	-	-	*	*	-
Exterior organisations and foreign governments	*	*	*	-	-	-	-	-	-	-	-	-	*	*	*
Other	*	*	*	-	-	-	*	*	-	13	*	*	24	16	*
Unspecified	*	*	*	*	-	*	-	-	-	*	*	*	*	*	*

\* For values of 10 000 or lower the sample size is too small for reliable estimates.

Totals include other and unspecified population groups.

Due to rounding numbers do not necessarily add up to totals.

### 3. Workers (employers, employees and self-employed)

#### 3.4 By main industry, population group and gender

##### 3.4.3 Informal sector

1 000

Main industry	Black African			Coloured			Indian/Asian			White			Total		
	Total	Male	Female	Total	Male	Female	Total	Male	Female	Total	Male	Female	Total	Male	Female
<b>Total</b>	<b>1 999</b>	<b>1 110</b>	<b>889</b>	<b>119</b>	<b>84</b>	<b>35</b>	<b>36</b>	<b>23</b>	<b>13</b>	<b>109</b>	<b>62</b>	<b>47</b>	<b>2 265</b>	<b>1 280</b>	<b>984</b>
Agriculture, hunting, forestry and fishing	406	233	173	*	*	*	-	-	-	4	4	-	420	243	176
Mining and quarrying	*	*	-	-	-	-	-	-	-	*	*	-	*	*	-
Manufacturing	158	61	97	14	*	*	*	*	*	16	*	*	196	81	115
Electricity, gas and water supply	*	*	-	-	-	-	-	-	-	*	*	-	*	*	*
Construction	170	160	*	19	19	-	*	*	-	11	11	-	202	192	*
Wholesale and retail trade	795	307	488	28	17	11	16	13	*	30	20	*	869	357	513
Transport, storage and communication	115	106	*	*	*	-	*	*	-	*	*	-	127	117	*
Financial intermediation, insurance, real estate and business services	51	31	20	*	*	*	*	*	-	21	*	13	78	44	34
Community, social and personal services	124	51	73	14	*	*	*	*	*	20	*	17	165	62	103
Private households with employed persons	175	157	18	21	19	*	-	-	-	-	-	-	196	176	19
Other	-	-	-	-	-	-	-	-	-	*	*	*	*	*	*
Unspecified	*	*	*	-	-	-	-	-	-	-	-	-	*	*	*

\* For values of 10 000 or lower the sample size is too small for reliable estimates.

Totals include other and unspecified population groups.

Due to rounding numbers do not necessarily add up to totals.

### 3. Workers (employers, employees and self-employed)

#### 3.5 By monthly income and sector

1 000

Monthly income	Formal	Informal	Domestic	Unspecified	Total
<b>Total</b>	<b>8 223</b>	<b>2 265</b>	<b>1 005</b>	<b>73</b>	<b>11 565</b>
None	33	317	*	-	351
R1 - R500	693	899	578	11	2 182
R501 - R1 000	1 187	486	308	*	1 991
R1 001 - R2 500	2 361	320	96	13	2 789
R2 501 - R8 000	2 526	131	*	14	2 674
R8 001+	726	32	-	*	764
Don't know/Refused	679	76	16	*	780
Unspecified	19	*	*	-	34

\* For all values of 10 000 or lower the sample size is too small for reliable estimates.

Due to rounding numbers do not necessarily add up to totals.

### 3. Workers (employees, employers and self-employed)

#### 3.6 By highest level of education and sector

1 000

Highest educational level	Formal	Informal	Domestic	Unspecified	Total
<b>Total</b>	<b>8 223</b>	<b>2 265</b>	<b>1 005</b>	<b>73</b>	<b>11 565</b>
None	330	276	137	*	748
Grade 0 to Grade 3/ Std 1	230	167	98	*	497
Grade 4/ Std 2	177	100	69	*	352
Grade 5/ Std 3	238	125	74	*	439
Grade 6/ Std 4	303	151	99	*	555
Grade 7/ Std 5	451	217	120	*	793
Grade 8/ Std 6	517	253	135	*	909
Grade 9/ Std 7	458	182	78	*	722
Grade 10/ Std 8	739	199	73	*	1 020
Grade 11/ Std 9	504	165	50	12	731
Grade 12/ Std 10	2 325	305	57	13	2 701
NTC I - NTC III	102	16	-	-	118
Dipl./cert. with Grade 11/ Std 9 or lower	132	*	*	-	143
Dipl./cert. with Grade 12/ Std 10	920	54	*	*	982
Degree and higher	728	26	-	*	755
Other	*	*	-	-	*
Unspecified	62	17	*	*	93

\* For all values of 10 000 or lower the sample size is too small for reliable estimates.  
Due to rounding numbers do not necessarily add up to totals.



**3. Workers (employers, employees and self-employed)**

**3.7 By highest level of education and monthly income**

**3.7.1 All population groups**

1,000

Highest level of education	None	R1 - R500	R501 - R1 000	R1 001 - R2 500	R2 501 - R8 000	R8 001 or more	Unspecified	Total
<b>Total</b>	<b>351</b>	<b>2,182</b>	<b>1,991</b>	<b>2,789</b>	<b>2,674</b>	<b>764</b>	<b>815</b>	<b>11,565</b>
None	62	352	168	126	27	*	11	748
Grade 0 to Grade 3/ Std 1	32	195	130	105	26	*	*	497
Grade 4/ Std 2	19	133	91	80	24	*	*	352
Grade 5/ Std 3	20	156	122	106	23	*	*	439
Grade 6/ Std 4	26	180	150	152	33	*	12	555
Grade 7/ Std 5	38	238	204	234	57	*	18	793
Grade 8/ Std 6	35	224	233	285	96	*	33	909
Grade 9/ Std 7	31	165	178	217	96	*	26	722
Grade 10/ Std 8	22	159	183	351	210	29	68	1,020
Grade 11/ Std 9	23	139	153	245	126	15	29	731
Grade 12/ Std 10	35	193	315	680	984	214	281	2,701
NTC I - NTC III	*	*	*	21	42	23	22	118
Dipl./cert. with Grade 11/ Std 9 or lower	*	*	*	25	71	14	20	143
Dipl./cert. with Grade 12/ Std 10	*	17	28	98	554	165	117	982
Degree and higher	*	13	12	36	288	276	127	755
Other	-	-	-	*	*	*	*	*
Unspecified	*	*	11	24	13	*	30	93

\* For all values of 10 000 or lower the sample size is too small for reliable estimates.

Due to rounding numbers do not necessarily add up to totals.

**3. Workers (employers, employees and self-employed)**

**3.7 By highest level of education and monthly income**

**3.7.2 Black African**

1,000

Highest level of education	None	R1 - R500	R501 - R1 000	R1 001 - R2 500	R2 501 - R8 000	R8 001 or more	Unspecified	Total
<b>Total</b>	<b>331</b>	<b>1,979</b>	<b>1,599</b>	<b>2,083</b>	<b>1,386</b>	<b>167</b>	<b>273</b>	<b>7,818</b>
None	61	329	142	119	26	*	*	690
Grade 0 to Grade 3/ Std 1	32	182	108	96	24	*	*	450
Grade 4/ Std 2	19	123	73	70	23	-	*	311
Grade 5/ Std 3	20	143	95	92	17	*	*	375
Grade 6/ Std 4	26	163	118	129	28	*	*	474
Grade 7/ Std 5	37	222	164	192	47	*	*	672
Grade 8/ Std 6	35	206	187	210	61	*	24	725
Grade 9/ Std 7	29	151	145	159	55	*	14	556
Grade 10/ Std 8	19	142	147	245	89	*	25	670
Grade 11/ Std 9	22	128	137	187	64	*	17	559
Grade 12/ Std 10	26	154	239	451	378	38	75	1,362
NTC I - NTC III	*	*	*	12	16	*	*	39
Dipl./cert. with Grade 11/ Std 9 or lower	*	*	*	18	41	*	*	76
Dipl./cert. with Grade 12/ Std 10	*	15	21	67	358	35	28	526
Degree and higher	*	*	*	15	151	66	27	272
Other	-	*	-	*	-	-	*	*
Unspecified	*	*	*	18	*	*	16	63

\* For all values of 10 000 or lower the sample size is too small for reliable estimates.

Due to rounding numbers do not necessarily add up to totals.

### 3. Workers (employers, employees and self-employed)

#### 3.7 By highest level of education and monthly income

##### 3.7.3 Other<sup>1</sup>

1,000

Highest level of education	None	R1 - R500	R501 - R1 000	R1 001 - R2 500	R2 501 - R8 000	R8 001 or more	Unspecified	Total
<b>Total</b>	<b>20</b>	<b>203</b>	<b>392</b>	<b>706</b>	<b>1,288</b>	<b>597</b>	<b>542</b>	<b>3,747</b>
None	*	22	26	*	*	-	*	59
Grade 0 to Grade 3/ Std 1	-	14	23	*	*	-	*	47
Grade 4/ Std 2	-	*	19	11	*	-	*	41
Grade 5/ Std 3	-	13	28	14	*	*	*	64
Grade 6/ Std 4	-	16	33	22	*	*	*	82
Grade 7/ Std 5	*	16	40	43	*	*	*	120
Grade 8/ Std 6	*	18	45	75	35	*	*	184
Grade 9/ Std 7	*	14	33	58	41	*	12	167
Grade 10/ Std 8	*	17	36	105	121	27	43	351
Grade 11/ Std 9	*	11	16	58	62	12	12	172
Grade 12/ Std 10	*	39	75	228	606	175	206	1,339
NTC I - NTC III	-	*	*	*	27	19	20	79
Dipl./cert. with Grade 11/ Std 9 or lower	*	*	*	*	30	*	18	66
Dipl./cert. with Grade 12/ Std 10	*	*	*	31	196	130	89	456
Degree and higher	*	*	*	21	137	210	100	483
Other	-	-	-	*	*	*	*	*
Unspecified	-	*	*	*	*	*	14	30

\* For all values of 10 000 or lower the sample size is too small for reliable estimates.

<sup>1</sup> Other includes coloured, Indian/Asian, white and unspecified population groups. These groups are aggregated due to the small sample size.

Due to rounding numbers do not necessarily add up to totals.

### 3. Workers (employers, employees and self-employed)

#### 3.8 Workers with degrees, diplomas and certificates by field of study and monthly income

1 000

Field of study	None	R1 - R500	R501 - R1 000	R1 001 - R2 500	R2 501 - R8 000	R8 001 or more	Unspecified	Total
<b>Total</b>	*	35	45	160	914	456	264	1 880
Communication studies and languages	-	-	-	*	17	13	*	41
Education, training and development	*	*	15	37	383	66	38	549
Manufacturing, engineering and technology	-	*	*	18	63	89	34	213
Human and social studies	*	*	*	*	24	16	11	62
Law, military science and security	-	-	-	*	35	26	17	86
Health sciences and social services	*	*	*	18	121	42	33	221
Agriculture and nature conservation	*	-	*	*	17	13	*	51
Culture and arts	-	*	*	*	15	*	*	35
Business, commerce and management studies	*	*	*	30	141	130	66	384
Physical, mathematical, computer and life sciences	-	*	*	17	51	35	17	132
Services	-	-	*	*	17	*	*	39
Physical planning and construction	-	*	-	*	*	*	*	22
Don't know	-	-	-	-	*	-	*	*
Unspecified	-	*	*	*	21	*	*	40

\* For all values of 10 000 or lower the sample size is too small for reliable estimates.  
Due to rounding numbers do not necessarily add up to totals.

### 3. Workers (employers, employees and self-employed)

#### 3.9 By main industry and monthly income

1 000

Main industry	None	R1 - R500	R501 - R1 000	R1 001 - R2 500	R2 501 - R8 000	R8 001 or more	Unspecified	Total
<b>Total</b>	<b>351</b>	<b>2 182</b>	<b>1 991</b>	<b>2 789</b>	<b>2 674</b>	<b>764</b>	<b>815</b>	<b>11 565</b>
Agriculture, hunting, forestry and fishing	277	442	379	100	36	22	33	1 288
Mining and quarrying	-	*	29	287	135	31	23	514
Manufacturing	*	155	245	579	423	128	133	1 668
Electricity, gas and water supply	-	*	*	27	27	20	*	88
Construction	*	86	135	205	82	25	40	583
Wholesale and retail trade	47	598	488	635	345	101	158	2 373
Transport, storage and communication	*	39	70	173	200	54	59	598
Financial intermediation, insurance, real estate and business services	*	39	109	255	310	176	138	1 027
Community, social and personal services	*	112	155	417	1 104	200	187	2 183
Private households with employed persons	*	694	373	107	*	-	20	1 202
Exterior organisations and foreign governments	-	*	-	-	-	*	-	*
Other	*	*	*	*	*	*	*	27
Unspecified	*	-	*	*	-	*	*	13

\* For all values of 10 000 or lower the sample size is too small for reliable estimates.  
Due to rounding numbers do not necessarily add up to totals.

### 3. Workers (employers, employees and self-employed)

#### 3.10 By main occupation and monthly income

1 000

Main occupation	None	R1 - R500	R501 - R1 000	R1 001 - R2 500	R2 501 - R8 000	R8 001 or more	Unspecified	Total
<b>Total</b>	<b>351</b>	<b>2 182</b>	<b>1 991</b>	<b>2 789</b>	<b>2 674</b>	<b>764</b>	<b>815</b>	<b>11 565</b>
Legislators, senior officials and managers	*	12	16	50	243	244	110	677
Professionals	*	*	*	30	223	179	85	536
Technical and associate professionals	*	35	44	138	677	145	131	1 174
Clerks	*	36	85	292	534	58	125	1 137
Service workers and shop and market sales workers	23	209	260	415	278	32	94	1 312
Skilled agricultural and fishery workers	267	46	26	24	16	12	11	402
Craft and related trades workers	14	178	261	504	294	66	87	1 405
Plant and machine operators and assemblers	*	120	219	568	259	15	49	1 234
Elementary occupation	27	958	759	667	140	*	83	2 645
Domestic workers	*	578	308	96	*	-	18	1 005
Occupation not adequately defined	-	*	*	*	*	*	11	25
Unspecified	*	-	*	*	-	*	*	13

\* For all values of 10 000 or lower the sample size is too small for reliable estimates.

Due to rounding numbers do not necessarily add up to totals.

### 3. Workers (employers, employees and self-employed)

#### 3.11 By employment status

##### 3.11.1 By sector and sex

1 000

Employment status	Formal	Informal	Domestic worker	Unspecified	Total
<b>RSA</b>					
<b>Total</b>	<b>8 223</b>	<b>2 265</b>	<b>1 005</b>	<b>73</b>	<b>11 565</b>
Working for someone else	7 667	521	61	56	8 304
Working for one or more private households as a domestic employee, gardener or security guard	26	214	944	-	1 183
Working on his/her own small farm/plot or collecting natural products from the forest or sea	*	292	-	-	295
Working on his/her own or with a partner, in any type of business (including commercial farms)	502	1 192	*	12	1 707
Helping without pay in a family business	27	45	-	-	72
Unspecified	-	-	-	*	*
<b>Male</b>					
<b>Total</b>	<b>5 070</b>	<b>1 280</b>	<b>51</b>	<b>44</b>	<b>6 445</b>
Working for someone else	4 676	383	*	33	5 098
Working for one or more private households as a domestic employee, gardener or security guard	13	190	46	-	250
Working on his/her own small farm/plot or collecting natural products from the forest or sea	*	140	-	-	142
Working on his/her own or with a partner, in any type of business (including commercial farms)	373	547	*	*	928
Helping without pay in a family business	*	20	-	-	25
Unspecified	-	-	-	*	*

### 3. Workers (employers, employees and self-employed)

#### 3.11 By employment status

##### 3.11.1 By sector and sex (concluded)

1 000

Employment status	Formal	Informal	Domestic worker	Unspecified	Total
<b>Female</b>					
<b>Total</b>	<b>3 152</b>	<b>984</b>	<b>953</b>	<b>29</b>	<b>5 118</b>
Working for someone else	2 989	137	56	22	3 204
Working for one or more private households as a domestic employee, gardener or security guard	12	23	898	-	933
Working on his/her own small farm/plot or collecting natural products from the forest or sea	-	153	-	-	154
Working on his/her own or with a partner, in any type of business (including commercial farms)	129	646	-	*	779
Helping without pay in a family business	21	26	-	-	47
Unspecified	-	-	-	*	*

\* For all values of 10 000 or lower the sample size is too small for reliable estimates.  
Due to rounding numbers do not necessarily add up to totals.



### 3. Workers (employers, employees and self-employed)

#### 3.11 By employment status

##### 3.11.2 By sector, population group and sex

1 000

Employment status	Black African			Coloured			Indian/Asian			White			Total		
	Total	Male	Female	Total	Male	Female	Total	Male	Female	Total	Male	Female	Total	Male	Female
<b>Formal sector</b>															
<b>Total</b>	<b>4 870</b>	<b>3 163</b>	<b>1 707</b>	<b>1 154</b>	<b>637</b>	<b>517</b>	<b>384</b>	<b>240</b>	<b>143</b>	<b>1 806</b>	<b>1 025</b>	<b>779</b>	<b>8 223</b>	<b>5 070</b>	<b>3 152</b>
Working for someone else for pay	4 726	3 066	1 661	1 126	618	509	331	203	129	1 476	787	687	7 667	4 676	2 989
Working for one or more private households as a gardener or security guard	20	11	*	*	*	*	-	-	-	-	-	-	26	13	12
Working on his/her own or on a small family farm/plot or collecting natural products from the forest or sea	*	*	-	-	-	-	-	-	-	*	*	-	*	*	-
Working on his/her own or with a partner, in any type of business (including commercial farms)	113	82	31	23	17	*	49	37	12	316	235	81	502	373	129
Helping without pay in a family business	*	*	*	-	-	-	*	*	*	13	*	11	27	*	21
<b>Informal sector</b>															
<b>Total</b>	<b>1 999</b>	<b>1 110</b>	<b>889</b>	<b>119</b>	<b>84</b>	<b>35</b>	<b>36</b>	<b>23</b>	<b>13</b>	<b>109</b>	<b>62</b>	<b>47</b>	<b>2 265</b>	<b>1 280</b>	<b>984</b>
Working for someone else for pay	439	326	112	43	34	*	18	*	*	22	13	*	521	383	137
Working for one or more private households as a gardener or security guard	193	172	21	20	18	*	-	-	-	-	-	-	214	190	23
Working on his/her own or on a small family farm/plot or collecting natural products from the forest or sea	289	139	151	*	*	*	-	-	-	*	*	-	292	140	153
Working on his/her own or with a partner, in any type of business (including commercial farms)	1 035	454	581	51	30	21	18	13	*	86	48	38	1 192	547	646
Helping without pay in a family business	43	19	24	*	*	*	-	-	-	-	-	-	45	20	26
Unspecified	*	*	-	-	-	-	-	-	-	-	-	-	*	*	-

\* For all values of 10 000 and lower the sample size is too small for reliable estimates.

Totals include other and unspecified population groups.

Domestic workers are not included in this table.

Due to rounding numbers do not necessarily add up to totals.

### 3. Workers (employers, employees and self-employed)

#### 3.12 Provision for, or contribution towards, medical aid fund/ health insurance, by main industry

##### 3.12.1 Formal sector

1 000

Main industry	Extent of cover				
	Worker only	Worker and dependants	None	Unspecified	Total
<b>Total</b>	<b>1 159</b>	<b>2 010</b>	<b>4 939</b>	<b>115</b>	<b>8 223</b>
Agriculture, hunting, forestry and fishing	21	38	794	13	865
Mining and quarrying	151	150	204	*	509
Manufacturing	198	312	924	28	1 462
Electricity, gas and water supply	21	36	25	*	83
Construction	33	40	286	*	369
Wholesale and retail trade	108	171	1 188	23	1 489
Transport, storage and communication	82	136	238	*	464
Financial intermediation, insurance, real estate and business services	158	232	543	*	940
Community, social and personal services	385	881	719	21	2 006
Private households with employed persons	-	-	*	-	*
Exterior organisations and foreign governments	-	*	*	-	*
Other	*	*	14	-	24
Unspecified	-	*	*	*	*

\* For all values of 10 000 or lower the sample size is too small for reliable estimates.

Due to rounding numbers do not necessarily add up to totals.

3. Workers (employers, employees and self-employed)

3.12 Provision for or contribution towards medical aid fund/ health insurance, by main industry

3.12.2 Informal sector

1 000

Main industry	Extent of cover				
	Worker only	Worker and dependants	None	Unspecified	Total
<b>Total</b>	<b>12</b>	<b>56</b>	<b>2 181</b>	<b>16</b>	<b>2 265</b>
Agriculture, hunting, forestry and fishing	*	*	409	*	420
Mining and quarrying	-	-	*	-	*
Manufacturing	*	*	184	*	196
Electricity, gas and water supply	-	*	*	-	*
Construction	*	*	197	*	202
Wholesale and retail trade	*	*	854	*	869
Transport, storage and communication	-	*	123	-	127
Financial intermediation, insurance, real estate and business services	-	*	71	*	78
Community, social and personal services	*	16	144	*	165
Private households with employed persons	-	*	191	*	196
Other	*	-	*	-	*
Unspecified	-	-	*	-	*

\* For all values of 10 000 or lower the sample size is too small for reliable estimates.

Due to rounding numbers do not necessarily add up to totals.

### 3. Workers (employers, employees and self-employed)

#### 3.13 By main industry and location of business

##### 3.13.1 Formal sector

1 000

Main industry	In the owner's home/ On the owner's farm	In someone else's home	Inside formal business premises such as factory or office	At a service outlet such as a shop, school, post office etc	At a market	On a foot path, street, corner, open space or field	No fixed location	Unspecified	Total
<b>Total</b>	<b>1,009</b>	<b>38</b>	<b>4,702</b>	<b>2,285</b>	*	<b>92</b>	<b>79</b>	*	<b>8,223</b>
Agriculture, hunting, forestry and fishing	708	*	121	*	*	20	*	*	865
Mining and quarrying	*	*	491	*	-	*	*	*	509
Manufacturing	57	*	1,300	91	-	*	*	*	1,462
Electricity, gas and water supply	*	-	67	11	-	*	*	*	83
Construction	40	*	257	22	-	12	29	*	369
Wholesale and retail trade	70	*	634	750	*	15	*	*	1,489
Transport, storage and communication	31	*	317	77	*	*	18	*	464
Financial intermediation, insurance, real estate and business services	51	*	741	135	-	*	*	*	940
Community, social and personal services	39	*	750	1,181	*	21	*	*	2,006
Private households with employed persons	*	-	-	-	-	-	-	*	*
Exterior organisations and foreign governments	-	-	*	-	-	-	-	*	*
Other	*	*	16	*	*	-	*	*	24
Unspecified	*	-	*	*	*	-	-	*	*

\* For all values of 10 000 or lower the sample size is too small for reliable estimates.

Due to rounding numbers do not necessarily add up to totals.

### 3. Workers (employers, employees and self-employed)

#### 3.13 By main industry and location of business

##### 3.13.2 Informal sector

1 000

Main industry	In the owner's home/ On the owner's farm	In someone else's home	Inside formal business premises such as factory or office	At a service outlet such as a shop, school, post office etc	At a market	On a foot path, street, corner, open space or field	No fixed location	Other	Total
<b>Total</b>	<b>1 483</b>	<b>91</b>	<b>71</b>	<b>141</b>	<b>22</b>	<b>119</b>	<b>326</b>	<b>12</b>	<b>2 265</b>
Agriculture, hunting, forestry and fishing	388	*	*	-	*	*	15	*	420
Mining and quarrying	-	-	*	*	-	-	-	-	*
Manufacturing	137	*	19	*	*	*	18	-	196
Electricity, gas and water supply	-	-	*	*	-	-	-	-	*
Construction	80	16	*	*	-	*	89	*	202
Wholesale and retail trade	542	17	12	68	20	79	130	*	869
Transport, storage and communication	53	12	*	*	-	*	41	*	127
Financial intermediation, insurance, real estate and business services	43	*	*	*	-	*	14	*	78
Community, social and personal services	80	11	12	43	-	11	*	*	165
Private households with employed persons	160	21	*	*	-	-	13	-	196
Other	-	-	*	-	-	-	-	-	*
Unspecified	*	-	-	-	-	*	-	-	*

\* For all values of 10 000 or lower the sample size is too small for reliable estimates.  
Due to rounding numbers do not necessarily add up to totals.

### 3. Workers (employees, employers and self-employed)

#### 3.14 By main industry and number of regular workers in the business

1 000

Main industry	Number of regular workers							Total
	1	2 - 4	5 - 9	10 - 19	20 - 49	50 or more	Unspecified	
<b>Total</b>	<b>2 312</b>	<b>1 492</b>	<b>1 092</b>	<b>1 413</b>	<b>1 812</b>	<b>3 241</b>	<b>203</b>	<b>11 565</b>
Agriculture, hunting, forestry and fishing	191	248	166	169	216	287	*	1 288
Mining and quarrying	*	18	24	24	22	421	*	514
Manufacturing	137	106	105	175	324	788	34	1 668
Electricity, gas and water supply	*	*	*	12	17	46	*	88
Construction	52	125	74	103	116	97	17	583
Wholesale and retail trade	678	426	311	333	274	302	49	2 373
Transport, storage and communication	89	80	55	58	88	217	11	598
Financial intermediation, insurance, real estate and business services	72	101	130	136	227	332	30	1 027
Community, social and personal services	122	194	193	387	519	733	35	2 183
Private households with employed persons	964	190	26	*	*	*	*	1 202
Exterior organisations and foreign governments	-	-	-	*	*	*	-	*
Other	*	-	*	*	*	*	*	27
Unspecified	-	*	-	*	*	*	*	13

\* For all values of 10 000 or more the sample size is too small for reliable estimates.  
Due to rounding numbers do not necessarily add up to totals.

### 3. Workers (employers, employees and self-employed)

#### 3.15 By main industry and whether their company or close corporation is registered

1 000

Main industry	Whether company or close corporation is registered			
	Registered	Not registered	Unspecified	Total
<b>Total</b>	<b>7 034</b>	<b>4 340</b>	<b>191</b>	<b>11 565</b>
Agriculture, hunting, forestry and fishing	844	431	13	1 288
Mining and quarrying	509	*	*	514
Manufacturing	1 425	210	33	1 668
Electricity, gas and water supply	66	21	*	88
Construction	344	215	24	583
Wholesale and retail trade	1 415	917	40	2 373
Transport, storage and communication	429	161	*	598
Financial intermediation, insurance, real estate and business services	918	92	17	1 027
Community, social and personal services	1 014	1 131	37	2 183
Private households with employed persons	37	1 155	*	1 202
Exterior organisations and foreign governments	*	*	-	*
Other	23	*	*	27
Unspecified	*	*	*	13

\* For all values of 10 000 or lower the sample size is too small for reliable estimates.  
Due to rounding numbers do not necessarily add up to totals.

### 3. Workers (employers, employees and self-employed)

#### 3.16 By main industry and deduction of UIF contributions

1 000

Main industry	Deduction of UIF contributions				
	Yes	No (income is above UIF limit)	No (other reasons)	Unspecified	Total
<b>Total</b>	<b>5 223</b>	<b>775</b>	<b>5 355</b>	<b>212</b>	<b>11 565</b>
Agriculture, hunting, forestry and fishing	381	27	864	16	1 288
Mining and quarrying	440	18	53	*	514
Manufacturing	1 116	74	433	46	1 668
Electricity, gas and water supply	56	*	21	*	88
Construction	186	31	347	19	583
Wholesale and retail trade	882	104	1 340	47	2 373
Transport, storage and communication	336	31	225	*	598
Financial intermediation, insurance, real estate and business services	667	92	249	19	1 027
Community, social and personal services	1 067	322	759	36	2 183
Private households with employed persons	71	62	1 056	14	1 202
Exterior organisations and foreign governments	*	*	-	-	*
Other	14	*	*	*	27
Unspecified	*	*	*	*	13

\* For all values of 10 000 or lower the sample size is too small for reliable estimates.  
Due to rounding numbers do not necessarily add up to totals.



#### 4. Employees

##### 4.1 Conditions of employment

##### 4.1.1 By main industry and existence of written contract

1 000

Main industry	Written contract			
	Yes	No	Don't know/ unspecified	Total
<b>Total</b>	<b>5 900</b>	<b>3 442</b>	<b>145</b>	<b>9 487</b>
Agriculture, hunting, forestry and fishing	408	503	12	924
Mining and quarrying	461	47	*	513
Manufacturing	1 089	332	28	1 449
Electricity, gas and water supply	68	19	-	87
Construction	192	244	*	447
Wholesale and retail trade	890	502	27	1 419
Transport, storage and communication	345	153	*	509
Financial intermediation, insurance, real estate and business services	699	179	14	892
Community, social and personal services	1 558	445	19	2 022
Private households with employed persons	165	1 012	18	1 195
Exterior organisations and foreign governments	*	-	-	*
Other	15	*	*	21
Unspecified	*	*	-	*

\* For all values of 10 000 or lower the sample size is too small for reliable estimates.

Table excludes employers, self-employed and those working without pay.

Due to rounding numbers do not necessarily add up to totals.

#### 4. Employees

##### 4.1 Conditions of employment

##### 4.1.2 By main industry and terms of employment

1 000

Main industry	Terms of employment						Total
	Permanent	A fixed period contract	Temporary	Casual	Seasonal	Don't know/ unspecified	
<b>Total</b>	<b>7 095</b>	<b>380</b>	<b>1 243</b>	<b>627</b>	<b>98</b>	<b>43</b>	<b>9 487</b>
Agriculture, hunting, forestry and fishing	616	27	142	48	85	*	924
Mining and quarrying	471	25	13	*	-	*	513
Manufacturing	1 177	76	124	60	*	*	1 449
Electricity, gas and water supply	72	*	*	*	-	-	87
Construction	201	40	133	69	-	*	447
Wholesale and retail trade	1 022	51	193	147	*	*	1 419
Transport, storage and communication	385	24	70	26	-	*	509
Financial intermediation, insurance, real estate and business services	738	61	62	27	-	*	892
Community, social and personal services	1 805	62	103	47	-	*	2 022
Private households with employed persons	581	11	391	199	*	*	1 195
Exterior organisations and foreign governments	*	*	-	-	-	-	*
Other	18	*	*	-	-	-	21
Unspecified	*	-	*	-	-	-	*

\* For all values of 10 000 or lower the sample size is too small for reliable estimates.

Table excludes employers, self-employed and those working without pay.

Due to rounding numbers do not necessarily add up to totals.

#### 4. Employees

##### 4.1 Conditions of employment

##### 4.1.3 By main industry and paid leave status

1 000

Main industry	Paid leave			
	Yes	No	Unspecified	Total
<b>Total</b>	<b>5 766</b>	<b>3 601</b>	<b>119</b>	<b>9 487</b>
Agriculture, hunting, forestry and fishing	323	589	11	924
Mining and quarrying	472	40	*	513
Manufacturing	1 046	381	21	1 449
Electricity, gas and water supply	67	19	*	87
Construction	147	291	*	447
Wholesale and retail trade	806	588	26	1 419
Transport, storage and communication	324	178	*	509
Financial intermediation, insurance, real estate and business services	661	217	15	892
Community, social and personal services	1 681	325	17	2 022
Private households with employed persons	218	965	11	1 195
Exterior organisations and foreign governments	*	*	-	*
Other	14	*	-	21
Unspecified	*	*	*	*

\* For all values of 10 000 or lower the sample size is too small for reliable estimates.

Table excludes employers, self-employed and those working without pay.

Due to rounding numbers do not necessarily add up to totals.

#### 4. Employees

##### 4.1 Conditions of employment

##### 4.1.4 By main industry and trade union membership

1 000

Main industry	Trade union membership			
	Yes	No	Unspecified	Total
<b>Total</b>	<b>2 886</b>	<b>6 364</b>	<b>238</b>	<b>9 487</b>
Agriculture, hunting, forestry and fishing	72	840	11	924
Mining and quarrying	378	126	*	513
Manufacturing	530	872	47	1 449
Electricity, gas and water supply	43	37	*	87
Construction	60	376	11	447
Wholesale and retail trade	256	1 120	44	1 419
Transport, storage and communication	173	318	17	509
Financial intermediation, insurance, real estate and business services	184	682	26	892
Community, social and personal services	1 174	801	47	2 022
Private households with employed persons	14	1 166	15	1 195
Exterior organisations and foreign governments	*	*	-	*
Other	*	16	*	21
Unspecified	-	*	*	*

\* For all values of 10 000 or lower the sample size is too small for reliable estimates.

Table excludes employers, self-employed and those working without pay.

Due to rounding numbers do not necessarily add up to totals.

#### 4. Employees

##### 4.1 Conditions of employment

##### 4.1.5 By main industry and whether the employer provides for, or contributes towards, medical aid fund/ health insurance

1 000

Main industry	Extent of cover				
	Employee only	Employee and dependants	None	Unspecified	Total
<b>Total</b>	<b>1 119</b>	<b>1 955</b>	<b>6 283</b>	<b>130</b>	<b>9 487</b>
Agriculture, hunting, forestry and fishing	17	27	865	14	924
Mining and quarrying	151	150	205	*	513
Manufacturing	192	305	925	28	1 449
Electricity, gas and water supply	22	38	26	*	87
Construction	28	35	373	10	447
Wholesale and retail trade	97	145	1 154	24	1 419
Transport, storage and communication	80	137	282	*	509
Financial intermediation, insurance, real estate and business services	147	212	525	*	892
Community, social and personal services	380	882	738	22	2 022
Private households with employed persons	*	12	1 173	*	1 195
Exterior organisations and foreign governments	-	*	*	-	*
Other	*	*	12	-	21
Unspecified	-	*	*	*	*

\* For all values of 10 000 or lower the sample size is too small for reliable estimates.

Table excludes employers, self-employed and those working without pay.

Due to rounding numbers do not necessarily add up to totals.

## 5. The unemployed

### 5.1 By age, population group and sex

#### 5.1.1 Official definition of unemployment

1 000

Age group	Black African			Coloured			Indian/Asian			White			Total		
	Total	Male	Female	Total	Male	Female	Total	Male	Female	Total	Male	Female	Total	Male	Female
<b>Total</b>	<b>4 592</b>	<b>2 153</b>	<b>2 438</b>	<b>392</b>	<b>186</b>	<b>206</b>	<b>123</b>	<b>59</b>	<b>64</b>	<b>142</b>	<b>71</b>	<b>71</b>	<b>5 250</b>	<b>2 469</b>	<b>2 780</b>
15-24	1 433	682	751	173	82	91	59	31	27	51	30	21	1 717	826	890
25-34	1 844	838	1 007	107	47	60	33	17	17	34	*	24	2 018	911	1 108
35-44	855	387	467	71	37	34	18	*	15	29	15	14	973	444	530
45-54	370	188	182	34	16	18	*	*	*	21	11	*	434	220	214
55+	89	58	31	*	*	*	*	*	*	*	*	*	107	69	38

\* For all values of 10 000 or more the sample size is too small for reliable estimates.

Totals include other and unspecified population groups.

## 5. The unemployed

### 5.1 By age, population group and sex

#### 5.1.2 Expanded definition of unemployment

1 000

Age group	Black African			Coloured			Indian/Asian			White			Total		
	Total	Male	Female	Total	Male	Female	Total	Male	Female	Total	Male	Female	Total	Male	Female
<b>Total</b>	<b>7 532</b>	<b>3 213</b>	<b>4 318</b>	<b>540</b>	<b>235</b>	<b>304</b>	<b>145</b>	<b>67</b>	<b>78</b>	<b>202</b>	<b>98</b>	<b>104</b>	<b>8 421</b>	<b>3 615</b>	<b>4 805</b>
15-24	2 516	1 112	1 404	241	110	131	63	33	30	66	37	29	2 888	1 294	1 594
25-34	2 828	1 158	1 670	148	58	89	42	21	21	48	14	34	3 066	1 252	1 814
35-44	1 340	543	797	93	42	51	21	*	17	43	20	24	1 497	609	888
45-54	655	292	364	47	19	29	13	*	*	31	18	13	748	335	413
55+	192	108	84	*	*	*	*	*	*	13	*	*	222	126	96

\* For all values of 10 000 or more the sample size is too small for reliable estimates.

Totals include other and unspecified population groups.

## 5. The unemployed

### 5.2 By duration of job seeking, age and whether they have worked before (official definition of unemployment)

1 000

Duration of job seeking**	15-30 years			31-46 years			47-65 years			Total		
	Total	Worked before	Never worked	Total	Worked before	Never worked	Total	Worked before	Never worked	Total	Worked before	Never worked
<b>Total</b>	<b>3 135</b>	<b>791</b>	<b>2 342</b>	<b>1 703</b>	<b>1 034</b>	<b>669</b>	<b>412</b>	<b>325</b>	<b>87</b>	<b>5 250</b>	<b>2 149</b>	<b>3 099</b>
Less than a month	168	62	106	79	57	22	20	17	*	268	136	132
1 month - < 2 months	155	58	97	68	51	17	13	11	*	237	120	117
2 months - < 3 months	164	50	114	64	46	17	13	12	*	240	108	132
3 months - < 4 months	132	36	96	39	33	*	*	*	*	179	76	103
4 months - < 6 months	138	33	105	56	42	13	11	*	*	205	85	119
6 months - < 1 year	341	88	253	118	84	33	30	26	*	488	198	291
1 year - < 3 years	958	243	715	326	223	103	56	46	*	1 340	513	827
3 years - > 3 years	1 002	203	799	922	475	447	249	189	60	2 173	867	1 305
Not applicable	31	*	20	*	*	*	*	*	*	44	19	24
Don't know/ unspecified	46	*	38	22	14	*	*	*	*	76	28	47

\* For all values of 10 000 or lower the sample size is too small for reliable estimates.  
Information on this topic is not available for the expanded definition of unemployment.



## 5. The unemployed

### 5.3 Unemployed persons who have worked before by duration of unemployment and industry in which they worked

#### 5.3.1 Official definition of unemployment

1 000

Duration of unemployment	Previous industry										Total
	Agriculture, hunting and forestry	Mining	Manufacturing	Electricity, gas and water	Construction	Wholesale and retail trade	Transport, storage and communication	Finance and business services	Community, social and personal services	Private households	
<b>Total</b>	<b>138</b>	<b>77</b>	<b>413</b>	<b>16</b>	<b>223</b>	<b>479</b>	<b>96</b>	<b>159</b>	<b>191</b>	<b>345</b>	<b>2 149</b>
1 week - < 1 month	11	-	*	-	15	*	*	*	*	*	56
1 month - < 2 months	*	*	15	-	17	24	*	*	*	16	98
2 months - < 3 months	*	*	16	*	13	22	*	*	*	18	96
3 months - < 4 months	*	*	*	-	*	16	*	*	*	12	67
4 months - < 5 months	*	-	11	*	*	14	*	*	*	*	61
5 months - < 6 months	*	*	14	*	*	12	*	*	*	*	52
6 months - < 1 year	15	*	30	*	17	36	*	14	17	23	168
1 year - < 2 years	21	*	46	*	27	75	18	30	40	55	320
2 years - < 3 years	13	*	50	*	24	59	*	32	22	47	265
3 years - > 3 years	41	51	183	*	74	178	32	47	71	131	822
Don't know/ unspecified	*	*	31	-	15	36	*	11	*	24	144

\* For all values of 10 000 or lower the sample size is too small for reliable estimates.

Totals include exterior organisations and foreign government, other and unspecified.

## 5. The unemployed

### 5.3 Unemployed persons who have worked before by duration of unemployment and industry in which they worked

#### 5.3.2 Expanded definition of unemployment

1 000

Duration of unemployment	Previous industry										
	Agriculture, hunting and forestry	Mining	Manufacturing	Electricity, gas and water	Construction	Wholesale and retail trade	Transport, storage and communication	Finance and business services	Community, social and personal services	Private households	Total
<b>Total</b>	<b>259</b>	<b>117</b>	<b>570</b>	<b>23</b>	<b>294</b>	<b>677</b>	<b>128</b>	<b>202</b>	<b>275</b>	<b>554</b>	<b>3 116</b>
1 week - < 1 month	17	*	13	-	15	*	*	*	*	*	75
1 month - < 2 months	16	*	18	-	18	27	*	*	11	23	128
2 months - < 3 months	16	*	18	*	21	27	*	*	12	28	135
3 months - < 4 months	12	*	19	*	*	26	*	*	*	19	105
4 months - < 5 months	*	-	13	*	*	17	*	*	*	*	76
5 months - < 6 months	*	*	15	*	*	15	*	*	*	*	67
6 months - < 1 year	31	*	37	*	23	50	14	18	21	37	239
1 year - < 2 years	37	*	57	*	33	104	23	38	48	82	433
2 years - < 3 years	23	*	70	*	34	89	13	39	30	71	382
3 years - > 3 years	79	80	265	11	104	269	45	62	114	238	1 273
Don't know/ unspecified	11	*	46	*	20	44	*	11	20	31	205

\* For all values of 10 000 or lower the sample size is too small for reliable estimates.

## 5. The unemployed

### 5.4 Unemployed persons who have worked before by length of time since they last worked and previous occupation

#### 5.4.1 Official definition of unemployment

1 000

Length of time since last worked	Legislators, senior officials and managers	Professionals	Technicians and associate professionals	Clerks	Service workers and shop and market sales workers	Skilled agricultural and fishery workers	Craft and related trades workers	Plant and machine operators and assemblers	Elementary occupations	Domestic workers	Total
<b>Total</b>	<b>26</b>	<b>16</b>	<b>83</b>	<b>215</b>	<b>298</b>	<b>17</b>	<b>348</b>	<b>250</b>	<b>580</b>	<b>309</b>	<b>2 149</b>
1 week - < 1 month	*	*	*	*	*	*	14	*	23	*	56
1 month - < 2 months	-	-	*	*	14	*	16	*	32	13	98
2 months - < 3 months	*	*	*	*	*	*	16	*	30	15	96
3 months - < 4 months	-	-	*	*	*	-	*	*	24	11	67
4 months - < 5 months	-	-	*	*	*	-	*	*	19	*	61
5 months - < 6 months	-	-	*	*	*	*	*	*	15	*	52
6 months - < 1 year	*	*	*	15	24	*	31	16	52	18	168
1 year - < 2 years	*	*	20	44	52	*	43	24	75	50	320
2 years - < 3 years	*	*	*	32	47	*	41	23	62	42	265
3 years - > 3 years	11	*	32	67	101	*	143	124	214	121	822
Don't know/ unspecified	-	*	*	12	25	-	22	21	34	22	144

\* For all values of 10 000 or lower the sample size is too small for reliable estimates.

## 5. The unemployed

### 5.4 Unemployed persons who have worked before by length of time since they last worked and previous occupation

#### 5.4.2 Expanded definition of unemployment

1 000

Length of time since last worked	Legislators, senior officials and managers	Professionals	Technicians and associate professionals	Clerks	Service workers and shop and market sales workers	Skilled agricultural and fishery workers	Craft and related trades workers	Plant and machine operators and assemblers	Elementary occupations	Domestic workers	Total
<b>Total</b>	<b>32</b>	<b>19</b>	<b>112</b>	<b>294</b>	<b>430</b>	<b>25</b>	<b>470</b>	<b>337</b>	<b>882</b>	<b>503</b>	<b>3 116</b>
1 week - < 1 month	*	*	*	*	*	*	15	*	33	*	75
1 month - < 2 months	-	-	*	11	17	*	18	12	43	19	128
2 months - < 3 months	*	*	*	12	11	*	23	*	48	23	135
3 months - < 4 months	-	*	*	*	14	*	12	*	38	18	105
4 months - < 5 months	-	-	*	*	*	-	*	*	24	*	76
5 months - < 6 months	-	-	*	*	11	*	*	*	21	*	67
6 months - < 1 year	*	*	*	21	37	*	35	21	77	31	239
1 year - < 2 years	*	*	25	57	72	*	55	28	106	75	433
2 years - < 3 years	*	*	16	39	64	*	55	35	97	65	382
3 years - > 3 years	13	*	45	102	157	*	202	173	344	223	1 273
Don't know/ unspecified	*	*	*	18	33	*	35	28	50	28	205

\* For all values of 10 000 or lower the sample size is too small for reliable estimates.

## 5. The unemployed

### 5.5 Unemployed persons who have worked before by length of time since they last worked and age (official definition of unemployment)

Length of time since last worked	15 - 30 years		31 - 46 years		47 - 65 years		Total	
	N (1 000)	%	N ( 1000)	%	N (1 000)	%	N (1 000)	%
<b>Total</b>	<b>791</b>	<b>100.0</b>	<b>1034</b>	<b>100.0</b>	<b>325</b>	<b>100.0</b>	<b>2 149</b>	<b>100.0</b>
1 week - < 1 month	32	4.0	20	1.9	*	1.3	56	2.6
1 month - < 2 months	54	6.9	34	3.3	*	3.0	98	4.6
2 months - < 3 months	46	5.9	45	4.3	*	1.5	96	4.5
3 months - < 4 months	35	4.4	25	2.4	*	2.3	67	3.1
4 months - < 5 months	35	4.5	22	2.1	*	1.2	61	2.8
5 months - < 6 months	25	3.1	23	2.3	*	1.3	52	2.4
6 months - < 1 year	85	10.8	63	6.1	19	6.0	168	7.8
1 year - < 2 years	156	19.7	134	12.9	31	9.5	320	14.9
2 years - > 3 years	99	12.6	132	12.8	33	10.1	265	12.3
3 years or more	164	20.7	470	45.4	188	57.9	822	38.2
Don't know/ unspecified	59	7.5	65	6.3	19	6.0	144	6.7

\* For all values of 10 000 or lower the sample size is too small for reliable estimates.

## 5. The unemployed

### 5.6 Unemployed persons who have never worked by duration of job seeking and age

Duration of job seeking	15 - 30 years		31 - 46 years		47 - 65 years		Total	
	N (1 000)	%	N (1 000)	%	N (1 000)	%	N (1 000)	%
<b>Total</b>	<b>791</b>	<b>100.0</b>	<b>1 034</b>	<b>100.0</b>	<b>325</b>	<b>100.0</b>	<b>2 149</b>	<b>100.0</b>
Less than a month	62	7.9	57	5.5	17	5.1	136	6.3
1 month - < 2 months	58	7.4	51	4.9	11	3.3	120	5.6
2 months - < 3 months	50	6.3	46	4.5	12	3.6	108	5.0
3 months - < 4 months	36	4.5	33	3.2	*	2.4	76	3.6
4 months - < 6 months	33	4.2	42	4.1	*	3.0	85	4.0
6 months - < 1 year	88	11.1	84	8.1	26	7.9	198	9.2
1 year - < 3 years	243	30.8	223	21.6	46	14.2	513	23.9
3 years- > 3 years	203	25.7	475	46.0	189	58.3	867	40.3
Not applicable	*	1.3	*	0.7	*	0.3	19	0.9
Don't know/ unspecified	*	0.9	14	1.4	*	1.9	28	1.3

\* For all values of 10 000 or lower the sample size is too small for reliable estimates.

## 5. The unemployed

### 5.7 By highest level of education, population group and sex

#### 5.7.1 Official definition of unemployment

1 000

Highest level of education	Black African			Other <sup>1</sup>			Total		
	Total	Male	Female	Total	Male	Female	Total	Male	Female
<b>Total</b>	<b>4 592</b>	<b>2 153</b>	<b>2 438</b>	<b>658</b>	<b>316</b>	<b>342</b>	<b>5 250</b>	<b>2 469</b>	<b>2 780</b>
None	189	92	97	*	*	*	199	94	105
Grade 0 to Grade 3/ Std 1	146	81	65	*	*	*	155	86	69
Grade 4/ Std 2	141	79	62	12	*	*	152	85	67
Grade 5/ Std 3	164	83	81	13	*	*	177	91	86
Grade 6/ Std 4	226	119	107	22	11	11	248	130	118
Grade 7/ Std 5	352	170	182	42	21	21	394	191	203
Grade 8/ Std 6	393	203	190	67	37	30	460	240	220
Grade 9/ Std 7	434	209	225	66	28	38	500	238	263
Grade 10/ Std 8	462	207	254	97	53	44	559	261	298
Grade 11/ Std 9	598	243	355	44	20	24	642	263	379
Grade 12/ Std 10	1 232	560	672	215	91	124	1 447	651	796
NTC I - NTC III	25	13	13	*	*	*	32	18	14
Dipl./cert. with Grade 11/ Std 9 or lower	28	*	18	*	*	*	34	13	21
Dipl./cert. with Grade 12/ Std 10	145	52	93	21	*	11	165	62	103
Degree/higher	36	18	18	25	14	11	60	31	29
Other	*	-	*	-	-	-	*	-	*
Unspecified	21	14	*	*	*	-	22	15	*

\* For all values of 10 000 or lower the sample size is too small for reliable estimates.

<sup>1</sup> Other includes coloured, Indian/Asian, white and unspecified population groups. These groups are aggregated due to the small sample size.

Totals include other and unspecified population groups.

## 5. The unemployed

### 5.7 By highest level of education, population group and sex

#### 5.7.2 Expanded definition of unemployment

1 000

Highest level of education	Black African			Other <sup>1</sup>			Total		
	Total	Male	Female	Total	Male	Female	Total	Male	Female
<b>Total</b>	<b>7 532</b>	<b>3 213</b>	<b>4 318</b>	<b>889</b>	<b>402</b>	<b>486</b>	<b>8 421</b>	<b>3 615</b>	<b>4 805</b>
None	421	169	252	14	*	11	435	172	263
Grade 0 to Grade 3/ Std 1	311	152	160	16	*	*	327	159	168
Grade 4/ Std 2	256	124	133	14	*	*	271	130	141
Grade 5/ Std 3	300	147	153	23	13	*	323	159	163
Grade 6/ Std 4	406	184	222	34	16	18	441	200	240
Grade 7/ Std 5	613	258	355	66	29	37	678	287	391
Grade 8/ Std 6	675	315	360	97	49	49	772	363	409
Grade 9/ Std 7	730	315	415	91	37	54	821	352	469
Grade 10/ Std 8	752	313	439	131	66	65	883	379	505
Grade 11/ Std 9	912	335	577	60	26	33	972	361	610
Grade 12/ Std 10	1 837	779	1 058	269	110	159	2 106	889	1 217
NTC I - NTC III	33	15	17	*	*	*	41	21	19
Dipl./cert. with Grade 11/ Std 9 or lower	34	11	24	*	*	*	42	15	27
Dipl./cert. with Grade 12/ Std 10	175	60	115	28	13	15	204	73	131
Degree/higher	45	19	27	27	16	12	73	34	38
Other	*	-	*	*	-	*	*	-	*
Unspecified	30	19	11	*	*	-	31	20	12

\* For all values of 10 000 or lower the sample size is too small for reliable estimates.

<sup>1</sup> Other includes coloured, Indian/Asian, white and unspecified population groups. These groups are aggregated due to the small sample size.



## 5. The unemployed

### 5.8 Unemployed persons with degrees, diplomas and certificates by field of study, definition of unemployment and sex

1 000

Field of study for degree, diploma or certificate	Official definition			Expanded definition		
	Total	Male	Female	Total	Male	Female
<b>Total</b>	<b>259</b>	<b>106</b>	<b>153</b>	<b>318</b>	<b>122</b>	<b>196</b>
Communication studies and language	*	*	*	*	*	*
Education, training and development	54	16	38	68	17	50
Manufacturing, engineering and technology	33	25	*	37	29	*
Human and social studies	13	*	*	15	*	11
Law, military science and security	*	*	*	*	*	*
Health sciences and social services	11	*	*	16	*	12
Agriculture and nature conservation	*	*	*	*	*	*
Culture and arts	*	*	*	*	*	*
Business, commerce and management studies	83	28	56	104	33	71
Physical, mathematical, computer and life sciences	29	11	18	35	13	23
Services	*	*	*	*	*	*
Physical planning and construction	*	*	-	*	*	-
Don't know	*	*	-	*	*	-
Unspecified	*	*	*	*	*	*

\* For all values of 10 000 or lower the sample size is too small for reliable estimates.

## 6. Unemployed and not economically active population by reason for not working and sex

### 6.1 Official definition of unemployment

1 000

Reason for not for working	Male			Female			Total		
	Total	Not economically active	Unemployed	Total	Not economically active	Unemployed	Total	Not economically active	Unemployed
<b>Total</b>	<b>7 581</b>	<b>5 112</b>	<b>2 469</b>	<b>10 407</b>	<b>7 627</b>	<b>2 780</b>	<b>17 990</b>	<b>12 740</b>	<b>5 250</b>
Has found a job, but is only starting at a definite date in the future	19	-	19	19	-	19	38	-	38
Scholar or student, prefers not to work	2 665	2 665	-	2 529	2 529	-	5 195	5 195	-
Housewife/homemaker, prefers not to work	37	37	-	1 132	1 132	-	1 169	1 169	-
Retired and prefers not to seek formal work	132	132	-	161	161	-	293	293	-
Illness, invalid, disabled or unable to work	614	614	-	599	599	-	1 213	1 213	-
Too young or too old to work	255	255	-	736	736	-	992	992	-
Seasonal worker, e.g. fruit picker, wool-shearer	14	*	*	35	19	16	49	26	23
Lack of skills or qualifications for available jobs	450	178	272	661	328	333	1 111	505	606
Cannot find any work	2 910	976	1 933	3 968	1 755	2 213	6 878	2 732	4 146
Cannot find suitable work (salary, location of work or conditions not satisfactory)	167	53	114	207	89	117	373	142	231
Contract worker, e.g. mine worker resting according to contract	11	*	*	*	-	*	16	*	12
Recently retrenched	146	63	84	69	35	34	216	98	117
Other reasons	125	92	33	258	215	43	384	307	77
Not applicable	20	20	-	20	20	-	40	40	-
Unspecified	14	14	-	*	*	-	22	22	-

\* For all values of 10 000 or lower the sample size is too small for reliable estimates.

Due to rounding numbers do not necessarily add up to totals.

## 6. Unemployed and not economically active population by reason for not working and sex

### 6.2 Expanded definition of unemployment

1 000

Reason for not for working	Male			Female			Total		
	Total	Not economically active	Unemployed	Total	Not economically active	Unemployed	Total	Not economically active	Unemployed
<b>Total</b>	<b>7 581</b>	<b>3 966</b>	<b>3 615</b>	<b>10 407</b>	<b>5 602</b>	<b>4 805</b>	<b>17 990</b>	<b>9 569</b>	<b>8 421</b>
Has found a job, but is only starting at a definite date in the future	19	-	19	19	-	19	38	-	38
Scholar or student, prefers not to work	2 665	2 665	-	2 529	2 529	-	5 195	5 195	-
Housewife/homemaker, prefers not to work	37	37	-	1 132	1 132	-	1 169	1 169	-
Retired and prefers not to seek formal work	132	132	-	161	161	-	293	293	-
Illness, invalid, disabled or unable to work	614	614	-	599	599	-	1 213	1 213	-
Too young or too old to work	255	255	-	736	736	-	992	992	-
Seasonal worker, e.g. fruit picker, wool-shearer	14	*	13	35	*	32	49	*	45
Lack of skills or qualifications for available jobs	450	27	424	661	48	613	1 111	75	1 036
Cannot find work	2 910	122	2 787	3 968	201	3 767	6 878	323	6 555
Cannot find suitable work (salary, location of work or conditions not satisfactory)	167	*	159	207	19	188	373	26	347
Contract worker, e.g. mine worker resting according to contract	11	*	-	*	-	*	16	*	14
Recently retrenched	146	22	124	69	15	55	216	36	179
Other reasons	125	46	79	258	131	127	384	177	206
Not applicable	20	20	-	20	20	-	40	40	-
Unspecified	14	14	-	*	*	-	22	22	-

\* For all values of 10 000 or lower the sample size is too small for reliable estimates.

Due to rounding numbers do not necessarily add up to totals.

## 7. Population aged 66 years and older

### 7.1 Economically and not economically active by type of economic activity, sex and involvement in the activity

1 000

Economic activity and sex	Involved	Not involved	Total
Run or do any kind of business, big or small for himself/herself			
<b>Total</b>	<b>72</b>	<b>2 028</b>	<b>2 101</b>
Male	48	713	761
Female	24	1 316	1 341
Do any work for a wage, salary, commission or any payment in kind			
<b>Total</b>	<b>54</b>	<b>2 047</b>	<b>2 101</b>
Male	37	723	761
Female	16	1 324	1 341
Do any work as a domestic worker for a wage, salary, or any payment in kind			
<b>Total</b>	<b>17</b>	<b>2 084</b>	<b>2 101</b>
Male	*	756	761
Female	13	1 328	1 341
Help unpaid in a family business of any kind			
<b>Total</b>	<b>*</b>	<b>2 097</b>	<b>2 101</b>
Male	*	759	761
Female	*	1 338	1 341
Do any work in his/her own or the family's plot, farm, food garden, cattle post or kraal or help in growing farm produce or in looking after animals for the household			
<b>Total</b>	<b>56</b>	<b>2 045</b>	<b>2 101</b>
Male	29	731	761
Female	27	1 313	1 341

## 7. Population aged 66 years and older

### 7.1 Economically and not economically active by type of economic activity, sex and involvement in the activity (concluded)

1 000

Economic activity and sex	Involved	Not involved	Total
Do any construction or major repair work on his/her own home, plot, cattle post or business or those of the family			
<b>Total</b>	*	<b>2 099</b>	<b>2 101</b>
Male	*	759	761
Female	*	1 340	1 341
Catch any fish, prawns, shells, wild animals or other food for sale or family food			
<b>Total</b>	*	<b>2 101</b>	<b>2 101</b>
Male	*	760	761
Female	-	1 340	1 341
Beg for money or food in public			
<b>Total</b>	-	<b>2 101</b>	<b>2 101</b>
Male	-	761	761
Female	-	1 340	1 341
Involved in at least one activity except begging			
<b>Total</b>	<b>199</b>	<b>1 902</b>	<b>2 101</b>
Male	117	644	761
Female	83	1 258	1 341

\* For all values of 10 000 or lower the sample size is too small for reliable estimates.

Totals include unspecified sex.

Due to rounding numbers do not necessarily add up to totals.

## 7. Population aged 66 years and older

### 7.2 Economically and not economically active by type of economic activity, population group and involvement in the activity

1 000			
Economic activity and population group	Involved	Not involved	Total
Run or do any kind of business, big or small for himself/herself			
<b>Total</b>	<b>72</b>	<b>2 028</b>	<b>2 101</b>
African	51	1 508	1 560
Other <sup>1</sup>	21	520	542
Do any work for a wage, salary, commission or any payment in kind			
<b>Total</b>	<b>54</b>	<b>2 047</b>	<b>2 101</b>
African	33	1 527	1 560
Other <sup>1</sup>	21	520	542
Do any work as a domestic worker for a wage, salary, or any payment in kind			
<b>Total</b>	<b>17</b>	<b>2 084</b>	<b>2 101</b>
African	15	1 544	1 560
Other <sup>1</sup>	*	540	542
Help unpaid in a family business of any kind			
<b>Total</b>	<b>*</b>	<b>2 097</b>	<b>2 101</b>
African	*	1 557	1 560
Other <sup>1</sup>	*	540	542
Do any work in his/her own or the family's plot, farm, food garden, cattle post or kraal or help in growing farm produce or in looking after animals for the household			
<b>Total</b>	<b>56</b>	<b>2 045</b>	<b>2 101</b>
African	54	1 505	1 560
Other <sup>1</sup>	*	540	542

## 7. Population aged 66 years and older

### 7.2 Economically and not economically active by type of economic activity, population group and involvement in the activity (concluded)

1 000			
Economic activity and population group	Involved	Not involved	Total
Do any construction or major repair work on his/her own home, plot, cattle post or business or those of the family			
<b>Total</b>	*	<b>2 099</b>	<b>2 101</b>
African	*	1 557	1 560
Other <sup>1</sup>	-	542	542
Catch any fish, prawns, shells, wild animals or other food for sale or family food			
<b>Total</b>	*	<b>2 101</b>	<b>2 101</b>
African	-	1 559	1 560
Other <sup>1</sup>	-	541	542
Beg for money or food in public			
<b>Total</b>	-	<b>2 101</b>	<b>2 101</b>
African	-	1 559	1 560
Other <sup>1</sup>	-	542	542
Involved in at least one activity except begging			
<b>Total</b>	<b>199</b>	<b>1 902</b>	<b>2 101</b>
African	152	1 408	1 560
Other <sup>1</sup>	47	494	542

\* For all values of 10 000 or lower the sample size is too small for reliable estimates.

<sup>1</sup> Other includes Coloured, Indian/Asian, White and unspecified population groups. These groups are aggregated due to the small sample size.

Due to rounding numbers do not necessarily add up to totals.

## 7. Population aged 66 years and older

### 7.3 Those who are working by population group, sex and sector

1 000

Population group and sex	Formal	Informal	Domestic	Unspecified	Total
<b>All population groups</b>					
<b>Total</b>	72	115	13	*	202
Male	52	64	*	*	119
Female	20	51	13	*	84
<b>Black African</b>					
<b>Total</b>	36	106	12	*	155
Male	28	57	*	*	86
Female	*	49	12	*	69
<b>Other<sup>1</sup></b>					
<b>Total</b>	36	*	*	*	47
Male	24	*	-	*	33
Female	11	*	*	*	15

\* For all values of 10 000 or lower the sample size is too small for reliable estimates.

<sup>1</sup> Other includes Coloured, Indian/Asian, White and unspecified population groups. These groups are aggregated due to the small sample size.  
Due to rounding numbers do not necessarily add up to totals.



## 7. Population aged 66 years and older

### 7.4 Those who are working by main industry and sex

1 000

Main industry	Male	Female	Total
<b>Total</b>	<b>119</b>	<b>84</b>	<b>202</b>
Agriculture, hunting, forestry and fishing	47	31	78
Mining and quarrying	*	-	*
Manufacturing	*	*	12
Electricity, gas and water supply	*	-	*
Construction	*	*	*
Wholesale and retail trade	24	16	40
Transport, storage and communication	*	*	*
Financial intermediation, insurance, real estate and business services	*	*	15
Community, social and personal services	15	*	25
Private households with employed persons	*	13	17
Unspecified	*	*	*

\* For all values of 10 000 or lower the sample size is too small for reliable estimates.  
Due to rounding numbers do not necessarily add up to totals.

## 7. Population aged 66 years and older

### 7.5 Those who are working by main occupation and sex

1 000

Main occupation	Male	Female	Total
<b>Total</b>	<b>119</b>	<b>84</b>	<b>202</b>
Legislators, senior officials and managers	12	*	16
Professionals	*	*	*
Technical and associate professionals	*	*	13
Clerks	*	*	*
Service workers and shop and market sales workers	*	11	20
Skilled agricultural and fishery workers	37	29	66
Craft and related trades workers	*	*	15
Plant and machine operators and assemblers	*	-	*
Elementary occupation	24	14	38
Domestic workers	*	13	13
Unspecified	*	*	*

\* For all values of 10 000 the sample size is too small for reliable estimates.  
Due to rounding numbers do not necessarily add up to totals.

## 8. Voluntary work among population of working age (15-65 years)

### 8.1 Population by province and involvement in uncompensated work

1 000

Province	Involvement in uncompensated work for the benefit of the community		Total
	Yes	No	
<b>RSA</b>	<b>1 044</b>	<b>28 462</b>	<b>29 555</b>
Western Cape	247	3 007	3 254
Eastern Cape	176	3 547	3 735
Northern Cape	24	503	528
Free State	98	1 706	1 806
KwaZulu-Natal	94	6 003	6 116
North West	75	2 315	2 400
Gauteng	119	6 613	6 732
Mpumalanga	63	1 911	1 977
Limpopo	148	2 857	3 005

\* For all values of 10 000 or lower the sample size is too small for reliable estimates.

Total includes unspecifieds.

Due to rounding numbers do not necessarily add up to totals.

## 8. Voluntary work among population of working age (15-65 years)

### 8.2 Those engaged in voluntary work by age, population group and sex

1 000

Area and age group	Black African			Other <sup>1</sup>			Total		
	Total	Male	Female	Total	Male	Female	Total	Male	Female
<b>RSA</b>									
<b>Total</b>	<b>598</b>	<b>263</b>	<b>335</b>	<b>446</b>	<b>207</b>	<b>239</b>	<b>1 044</b>	<b>470</b>	<b>574</b>
15-24	125	62	63	44	20	25	169	82	87
25-34	163	67	96	95	45	50	258	112	146
35-44	163	71	92	127	62	65	289	133	157
45-54	98	38	60	100	45	56	199	83	115
55+	50	25	24	79	35	44	129	60	69

\* For all values of 10 000 or more the sample size is too small for reliable estimates.

<sup>1</sup> Other includes coloured, Indian/Asian, white and unspecified population groups. These groups are aggregated due to the small sample size.

Totals include other and unspecified population groups.

Due to rounding numbers do not necessarily add up to totals.

8. Voluntary work among population of working age (15-65 years)

8.3 Those engaged in voluntary work by population group, sex and labour market status

8.3.1 Official definition of unemployment

1 000

Population group and sex	Total	Not economically active	Economically active			
			Total	Workers	Unemployed	Unemployment rate
<b>All population groups</b>						
<b>Total</b>	<b>1 044</b>	<b>307</b>	<b>737</b>	<b>536</b>	<b>202</b>	<b>27.4</b>
Male	470	104	366	284	82	22.3
Female	574	203	371	251	120	32.4
<b>Black African</b>						
<b>Total</b>	<b>598</b>	<b>182</b>	<b>417</b>	<b>242</b>	<b>175</b>	<b>41.9</b>
Male	263	69	193	125	68	35.2
Female	335	112	223	117	107	47.7
<b>Other<sup>1</sup></b>						
<b>Total</b>	<b>446</b>	<b>125</b>	<b>321</b>	<b>294</b>	<b>27</b>	<b>8.5</b>
Male	207	34	173	159	14	7.9
Female	239	91	148	135	14	9.2

\* For all values of 10 000 or more the sample size is too small for reliable estimates.

<sup>1</sup> Other includes coloured, Indian/Asian, white and unspecified population groups. These groups are aggregated due to the small sample size.

Totals include other and unspecified population groups.

Due to rounding numbers do not necessarily add up to totals.

## 8. Voluntary work among population of working age (15-65 years)

### 8.3 Those engaged in voluntary work by population group, sex and labour market status

#### 8.3.2 Expanded definition of unemployment

1 000

Population group and sex	Total	Not economically active	Economically active			
			Total	Workers	Unemployed	Unemployment rate
<b>All population groups</b>						
<b>Total</b>	<b>1 044</b>	<b>233</b>	<b>812</b>	<b>536</b>	<b>276</b>	<b>34.0</b>
Male	470	80	390	284	106	27.1
Female	574	153	421	251	170	40.4
<b>Black African</b>						
<b>Total</b>	<b>598</b>	<b>116</b>	<b>483</b>	<b>242</b>	<b>241</b>	<b>49.9</b>
Male	263	49	214	125	88	41.3
Female	335	66	269	117	153	56.7
<b>Other<sup>1</sup></b>						
<b>Total</b>	<b>446</b>	<b>117</b>	<b>329</b>	<b>294</b>	<b>35</b>	<b>10.7</b>
Male	207	30	177	159	17	9.9
Female	239	87	152	135	18	11.7

\* For all values of 10 000 or more the sample size is too small for reliable estimates.

<sup>1</sup> Other includes coloured, Indian/Asian, white and unspecified population groups. These groups are aggregated due to the small sample size.

Totals include other and unspecified population groups.

Due to rounding numbers do not necessarily add up to totals.

## 8. Voluntary work among population of working age (15-65 years)

### 8.4 Population by type of uncompensated activity, population group, involvement in the activity and sex

1 000

Uncompensated activity and population group	Involved			Not involved			Total		
	Total	Male	Female	Total	Male	Female	Total	Male	Female
<b>To help sick or handicapped people in their everyday activities</b>									
<b>Total</b>	<b>154</b>	<b>52</b>	<b>101</b>	<b>889</b>	<b>417</b>	<b>472</b>	<b>1 044</b>	<b>470</b>	<b>574</b>
Black African	65	19	46	532	243	289	598	263	335
Other <sup>1</sup>	89	33	55	357	173	184	446	207	239
<b>To provide medical care, or counselling, to sick or handicapped people</b>									
<b>Total</b>	<b>129</b>	<b>38</b>	<b>91</b>	<b>914</b>	<b>431</b>	<b>483</b>	<b>1 044</b>	<b>470</b>	<b>574</b>
Black African	66	15	51	531	247	284	598	263	335
Other <sup>1</sup>	63	23	40	383	183	200	446	207	239
<b>To provide training or instruction to others</b>									
<b>Total</b>	<b>120</b>	<b>55</b>	<b>66</b>	<b>921</b>	<b>413</b>	<b>508</b>	<b>1 044</b>	<b>470</b>	<b>574</b>
Black African	51	19	32	545	242	303	598	263	335
Other <sup>1</sup>	70	36	34	376	171	205	446	207	239
<b>To keep law and order in a community</b>									
<b>Total</b>	<b>122</b>	<b>95</b>	<b>27</b>	<b>919</b>	<b>373</b>	<b>546</b>	<b>1 044</b>	<b>470</b>	<b>574</b>
Black African	85	66	19	510	195	315	598	263	335
Other <sup>1</sup>	37	29	*	409	178	231	446	207	239
<b>To maintain or replenish community resources (e.g. building or improving roads, water supply, structures, green areas, etc.)</b>									
<b>Total</b>	<b>171</b>	<b>82</b>	<b>89</b>	<b>871</b>	<b>386</b>	<b>485</b>	<b>1 044</b>	<b>470</b>	<b>574</b>
Black African	143	67	76	454	195	259	598	263	335
Other <sup>1</sup>	28	15	13	417	191	226	446	207	239
<b>To organise cultural events (e.g. music, dance, or performances), sporting events, or recreational activities for a community, neighbourhood, or a group</b>									
<b>Total</b>	<b>314</b>	<b>149</b>	<b>165</b>	<b>728</b>	<b>320</b>	<b>409</b>	<b>1 044</b>	<b>470</b>	<b>574</b>
Black African	178	86	91	419	176	243	598	263	335
Other <sup>1</sup>	136	63	73	309	144	165	446	207	239

**8. Voluntary work among population of working age (15-65 years)**

**8.4 Population by type of uncompensated activity, population group, involvement in the activity and sex (concluded)**

1 000

Uncompensated activity and population group	Involved			Not involved			Total		
	Total	Male	Female	Total	Male	Female	Total	Male	Female
<b>To collect money for an organisation/institution</b>									
<b>Total</b>	<b>161</b>	<b>65</b>	<b>96</b>	<b>882</b>	<b>404</b>	<b>478</b>	<b>1 044</b>	<b>470</b>	<b>574</b>
Black African	57	17	39	540	244	296	598	263	335
Other <sup>1</sup>	104	47	57	342	160	183	446	207	239
<b>To organise events to collect money for an organisation/institution</b>									
<b>Total</b>	<b>130</b>	<b>58</b>	<b>72</b>	<b>913</b>	<b>411</b>	<b>502</b>	<b>1 044</b>	<b>470</b>	<b>574</b>
Black African	32	15	17	565	247	318	598	263	335
Other <sup>1</sup>	98	43	55	348	164	184	446	207	239
<b>Other uncompensated work</b>									
<b>Total</b>	<b>84</b>	<b>31</b>	<b>54</b>	<b>959</b>	<b>438</b>	<b>520</b>	<b>1 044</b>	<b>470</b>	<b>574</b>
Black African	39	13	26	558	249	309	598	263	335
Other <sup>1</sup>	45	18	27	401	189	212	446	207	239

<sup>1</sup> Other includes coloured, Indian/Asian, white and unspecified population groups. These groups are aggregated due to the small sample size.

Totals include unspecified voluntary activities.

Due to rounding numbers do not necessarily add up to totals.