



stats sa

Department:
Statistics South Africa
REPUBLIC OF SOUTH AFRICA

Private Bag X44, Pretoria, 0001, South Africa, ISibalo House, Koch Street, Salvokop, Pretoria, 0002
www.statssa.gov.za, info@statssa.gov.za, Tel +27 12 310 8911

STATISTICAL RELEASE

P0142.7

Export and Import Unit Value Indices

June 2023

**Embargoed until:
24 August 2023
11:30**

ENQUIRIES:
Andrew Rankhumise
Tel: (012) 406 3304

FORTHCOMING ISSUE:
July 2023

EXPECTED RELEASE DATE:
21 September 2023

Dipalopalo tsa Aforikaborwa • Dipalopalo tsa Aforika Borwa • Ezazibalo zaseNingizimu Afrika • Tshitatistika Afrika Tshipembe • Tinhlayo Afrika-Dzonga

Statistieke Suid-Afrika • Dipalopalo tša Aforika Borwa • Telubalo zaseNingizimu Afrika • EzeeNkcukacha maNani zoMzantsi Afrika • Iimbalobalo zeSewula Afrika

IMPROVING LIVES THROUGH DATA ECOSYSTEMS



Contents

Key findings as at June 2023	2
Exports.....	2
Imports.....	2
Key figures and analytical series	3
Table A – Key figures	3
Table B – Analytical series	3
Detailed results	4
Main index numbers and rates of change (%)	4
Table C – Exports	4
Table D – Imports	4
Detailed index numbers and rates of change, and contributions	6
Table 1 – Exports	6
Table 2 – Imports.....	8
Explanatory notes.....	10
Glossary	10
General information.....	11

Key findings as at June 2023

Exports

The unit value index (UVI) for exported commodities shows an annual rate of change of -3,7% in June 2023. From May 2023 to June 2023 the UVI for exported commodities decreased by 2,2%.

The negative contributors to the annual rate of -3,7% were ores and minerals (-5,8 percentage points) and other transportable goods (-0,8 of a percentage point) – see Figure 4.1.

The main negative contributors to the monthly decrease of 2,2% were ores and minerals (-1,5 percentage points) and other transportable goods (-0,7 of a percentage point) – see Figure 4.2.

Imports

The UVI for imported commodities shows an annual rate of change of 3,9% in June 2023. From May 2023 to June 2023 the UVI for imported commodities increased by 1,6%.

The main contributors to the annual rate of 3,9% were metal products, machinery and equipment (4,9 percentage points) and other transportable goods (0,9 of a percentage point). Crude petroleum contributed -1,9 percentage points – see Figure 4.1.

The main contributors to the monthly increase of 1,6% were other transportable goods (0,8 of a percentage point) and metal products, machinery and equipment (0,5 of a percentage point) – see Figure 4.2.

Key figures and analytical series

Table A – Key figures

Product	Weight	Index (Dec 2020=100)			% change	
		Jun 2022	May 2023	Jun 2023	Jun 2023 vs. May 2023	Jun 2023 vs. Jun 2022
Exports	100,00	127,0	125,0	122,3	-2,2	-3,7
Imports	100,00	132,0	135,0	137,2	1,6	3,9

Table B – Analytical series

Product	Weight	Index (Dec 2020=100)			% change	
		Jun 2022	May 2023	Jun 2023	Jun 2023 vs. May 2023	Jun 2023 vs. Jun 2022
Exports excluding gold	95,53	130,1	127,5	124,3	-2,5	-4,5
Exports excluding ores and minerals	72,78	113,7	117,1	116,1	-0,9	2,1
Exports excluding basic metals	72,47	133,2	129,0	125,3	-2,9	-5,9
Imports excluding crude petroleum	93,62	123,7	129,8	131,9	1,6	6,6

Risenga Maluleke
Statistician-General

Detailed results

Main index numbers and rates of change (%)

Table C – Exports

Base: Dec 2020=100

Year and type	Jan	Feb	Mar	Apr	May	Jun	Jul	Aug	Sep	Oct	Nov	Dec	Average	
2021	Index	102,8	104,5	107,3	108,1	107,1	106,6	111,5	110,8	108,6	109,2	109,5	112,1	108,2
	Rate m/m	2,8	1,7	2,7	0,7	-0,9	-0,5	4,6	-0,6	-2,0	0,6	0,3	2,4	..
	Rate y/y	10,9	9,3	7,9	6,3	7,7	7,0	12,3	9,9	7,6	8,3	9,8	12,1	9,1
2022	Index	111,2	115,2	121,8	124,7	128,2	127,0	128,6	125,6	129,1	129,9	125,5	124,5	124,3
	Rate m/m	-0,8	3,6	5,7	2,4	2,8	-0,9	1,3	-2,3	2,8	0,6	-3,4	-0,8	..
	Rate y/y	8,2	10,2	13,5	15,4	19,7	19,1	15,3	13,4	18,9	19,0	14,6	11,1	14,9
2023	Index	123,4	126,1	126,0	124,3	125,0	122,3
	Rate m/m	-0,9	2,2	-0,1	-1,3	0,6	-2,2
	Rate y/y	11,0	9,5	3,4	-0,3	-2,5	-3,7

Table D – Imports

Base: Dec 2020=100

Year and type	Jan	Feb	Mar	Apr	May	Jun	Jul	Aug	Sep	Oct	Nov	Dec	Average	
2021	Index	101,5	105,5	105,0	105,8	105,7	104,4	105,7	108,6	109,8	110,8	113,1	117,5	107,8
	Rate m/m	1,5	3,9	-0,5	0,8	-0,1	-1,2	1,2	2,7	1,1	0,9	2,1	3,9	..
	Rate y/y	3,4	6,7	4,9	2,0	1,5	3,0	2,3	4,0	4,8	7,4	11,6	17,5	5,7
2022	Index	118,4	118,5	119,4	121,2	126,9	132,0	133,2	134,0	132,2	134,2	135,7	133,0	128,2
	Rate m/m	0,8	0,1	0,8	1,5	4,7	4,0	0,9	0,6	-1,3	1,5	1,1	-2,0	..
	Rate y/y	16,7	12,3	13,7	14,6	20,1	26,4	26,0	23,4	20,4	21,1	20,0	13,2	18,9
2023	Index	130,6	131,1	132,8	134,4	135,0	137,2
	Rate m/m	-1,8	0,4	1,3	1,2	0,4	1,6
	Rate y/y	10,3	10,6	11,2	10,9	6,4	3,9

Figure 1 – Export and import unit value indices

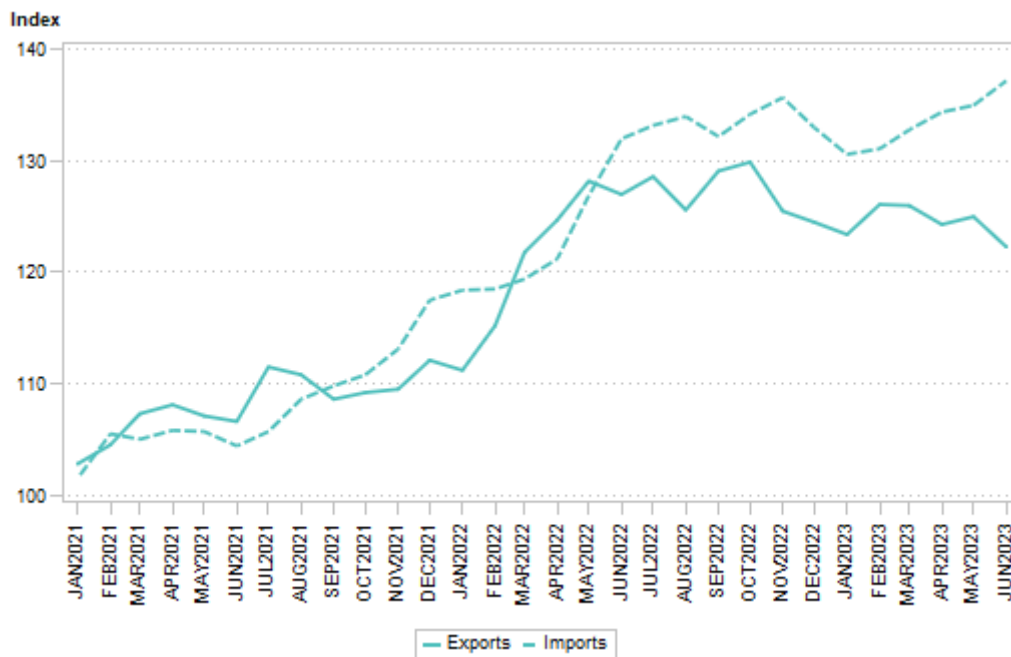


Figure 2 – Export UVI rates of change (%)

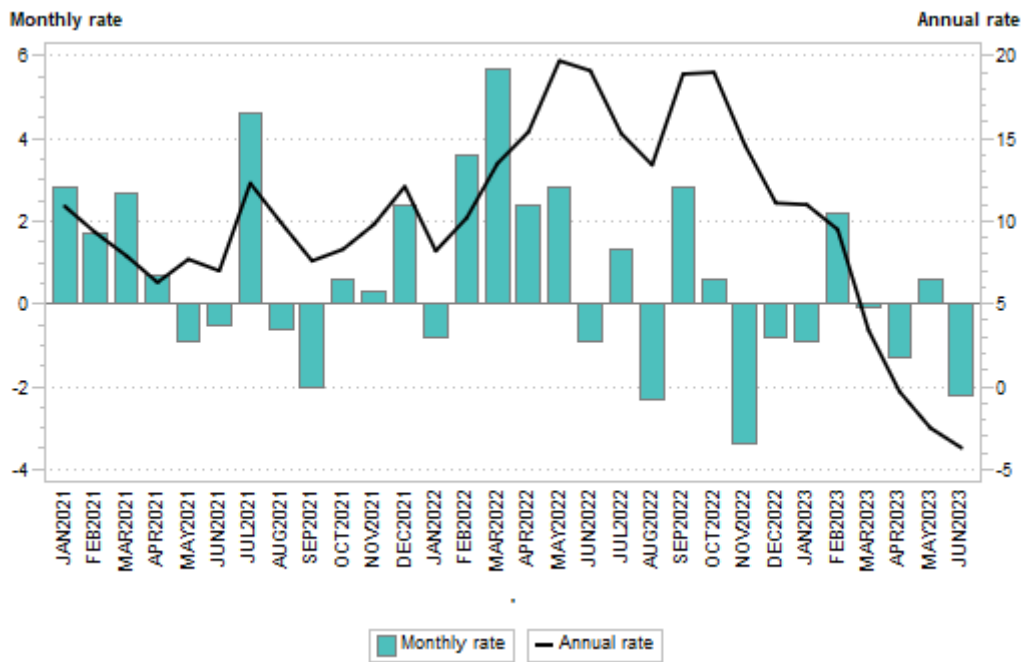
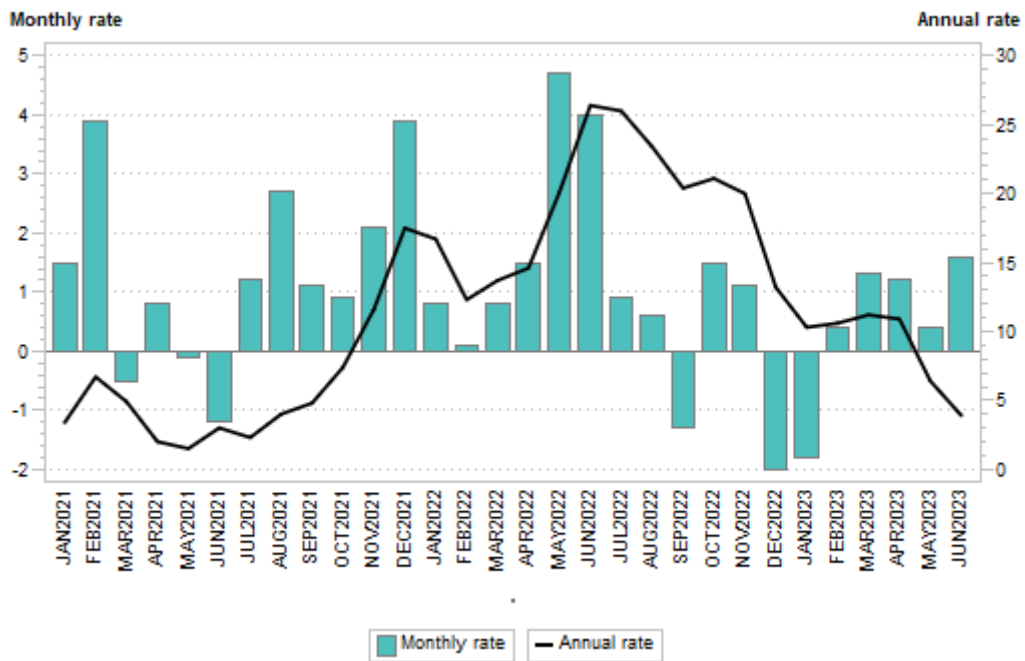


Figure 3 – Import UVI rates of change (%)



Detailed index numbers and rates of change, and contributions

Table 1 – Exports

Product	Weight	Index (Dec 2020=100)			% change	
		Jun 2022	May 2023	Jun 2023	Jun 2023 vs. May 2023	Jun 2023 vs. Jun 2022
All items	100,00	127,0	125,0	122,3	-2,2	-3,7
Agriculture	6,00	89,3	90,0	90,8	0,9	1,7
Ores and minerals	27,22	177,4	157,5	150,5	-4,4	-15,2
Coal	12,56	319,8	211,0	199,6	-5,4	-37,6
Metal ores	14,66	141,7	160,2	154,9	-3,3	9,3
Iron ores and concentrates	6,03	137,8	149,4	142,6	-4,6	3,5
Non-ferrous metal ores and concentrates	8,63	139,7	162,7	158,5	-2,6	13,5
Beverages	5,90	104,6	116,2	116,8	0,5	11,7
Other transportable goods, except metal products, machinery and equipment	16,58	134,9	134,0	128,4	-4,2	-4,8
Coke oven and refined petroleum products	4,30	153,4	172,0	168,7	-1,9	10,0
Basic chemicals	7,09	146,9	128,5	118,3	-7,9	-19,5
Other chemical products	3,70	118,4	127,9	127,3	-0,5	7,5
Rubber and plastic products	1,49	107,5	111,6	109,0	-2,3	1,4
Metal products, machinery and equipment	44,30	110,9	115,1	115,4	0,3	4,1
Basic metals	27,53	113,0	116,9	117,1	0,2	3,6
Basic iron and steel	4,06	145,2	142,5	141,9	-0,4	-2,3
Products of iron or steel	1,41	158,0	164,2	163,6	-0,4	3,5
Basic precious metals and metals clad with precious metals	18,90	103,8	97,3	97,8	0,5	-5,8
Other semi-finished metal products	3,16	113,9	177,9	177,5	-0,2	55,8
Fabricated metal products	1,13	112,3	103,3	105,0	1,6	-6,5
General purpose machinery	3,17	114,6	115,1	111,8	-2,9	-2,4
Special-purpose machinery	1,73	129,1	150,5	152,1	1,1	17,8
Transport equipment: motor vehicles	9,34	100,4	106,7	108,4	1,6	8,0
Other machinery and equipment	1,39	94,2	94,6	90,9	-3,9	-3,5

Figure 4.1 – Contributions to the annual percentage change in exports

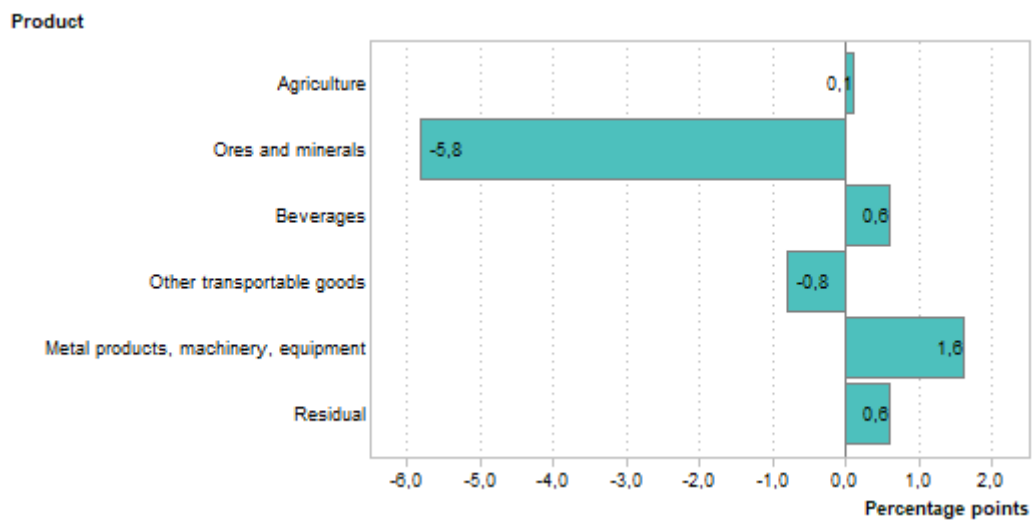


Figure 4.2 – Contributions to the monthly percentage change in exports

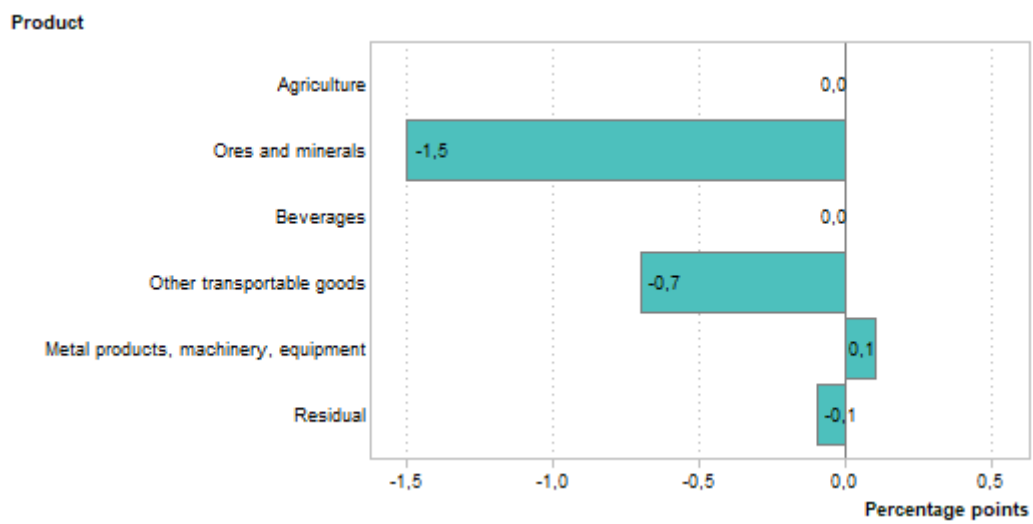


Table 2 – Imports

Product	Weight	Index (Dec 2020=100)			% change	
		Jun 2022	May 2023	Jun 2023	Jun 2023 vs. May 2023	Jun 2023 vs. Jun 2022
All items	100,00	132,0	135,0	137,2	1,6	3,9
Crude petroleum	6,38	227,1	186,3	188,8	1,3	-16,9
Food products	5,97	136,9	130,8	135,2	3,4	-1,2
Fats and oils	3,49	170,9	128,7	128,8	0,1	-24,6
Grain mill products	2,48	98,4	124,9	135,0	8,1	37,2
Clothing and footwear	4,71	108,6	121,5	120,5	-0,8	11,0
Clothing	3,07	106,9	120,8	120,7	-0,1	12,9
Footwear	1,64	112,1	122,7	120,1	-2,1	7,1
Other transportable goods, except metal products, machinery and equipment	41,87	136,5	136,6	139,3	2,0	2,1
Paper and paperboard	1,81	125,7	149,8	154,5	3,1	22,9
Coke oven and refined petroleum products	21,13	184,2	175,1	176,5	0,8	-4,2
Basic chemicals	8,57	127,6	127,1	129,3	1,7	1,3
Pharmaceutical and other chemical products	7,00	113,5	125,3	133,5	6,5	17,6
Pharmaceutical products	3,39	112,4	118,4	125,8	6,3	11,9
Other chemical products	3,60	114,7	132,1	141,0	6,7	22,9
Rubber and plastic products	2,85	113,1	120,7	124,3	3,0	9,9
Other transportable goods	0,52	119,9	120,7	123,5	2,3	3,0
Metal products, machinery and equipment	41,08	114,1	128,3	130,0	1,3	13,9
Basic metals	4,49	129,8	145,3	146,1	0,6	12,6
Fabricated metal products, except machinery and equipment	1,88	114,7	128,5	133,4	3,8	16,3
General purpose machinery	5,15	109,8	130,5	134,3	2,9	22,3
Special purpose machinery	6,24	108,6	122,0	125,1	2,5	15,2
Machinery for mining, quarrying and construction, and parts thereof	2,54	95,3	108,2	110,9	2,5	16,4
Agricultural or forestry machinery and parts thereof	1,07	92,1	105,2	108,8	3,4	18,1
Other machinery and parts thereof	2,64	122,6	135,7	138,8	2,3	13,2
Office, accounting and computing machinery	2,70	108,7	122,6	123,7	0,9	13,8
Electrical machinery and apparatus	3,79	126,2	144,1	148,0	2,7	17,3
Radio, television and communication equipment and apparatus	6,03	121,5	132,6	132,2	-0,3	8,8
Medical appliances, precision and optical instruments, watches and clocks	2,54	111,7	122,0	117,8	-3,4	5,5
Transport equipment	8,25	102,4	114,3	115,9	1,4	13,2
Vehicles	7,71	102,3	114,3	115,8	1,3	13,2
Bodies and parts of vehicles	0,54	103,9	114,1	116,4	2,0	12,0

Figure 5.1 – Contributions to the annual percentage change in imports

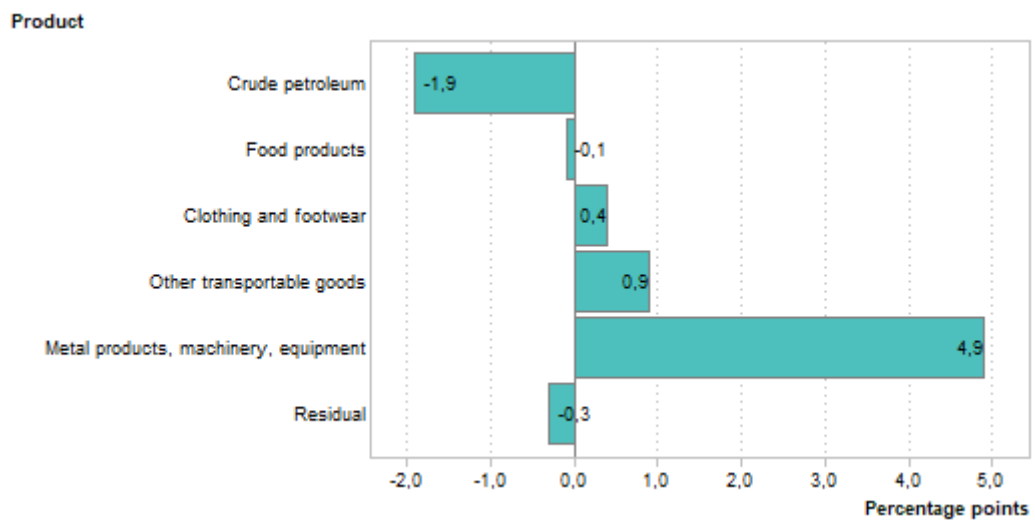
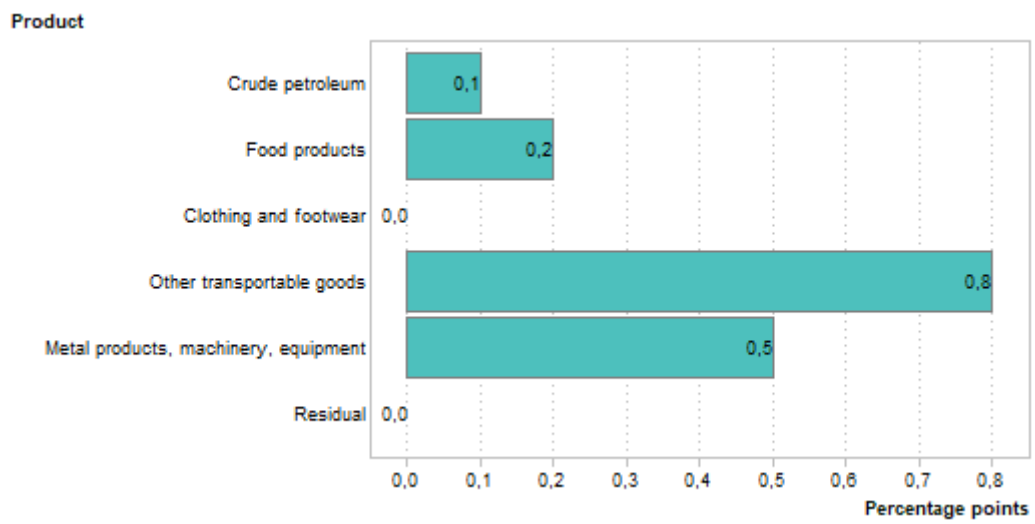


Figure 5.2 – Contributions to the monthly percentage change in imports



Explanatory notes

Purpose and results	The unit value index provides information on the trends in import and export unit values that are weighted with quantities of the current reference period. The calculation of unit value indices of commodities in exports and imports covers transactions reported by the South African Revenue Service (SARS). The results are used to compile export and import unit value indices, which are a measure of changes in export prices of locally produced commodities and changes in prices of imported commodities. Further information can be found in the XMUVI sources and methods document which can be accessed on the Stats SA website: http://www.statssa.gov.za/?page_id=2528 .
Source	South African Revenue Service (SARS).
Gold	The export unit value index for gold is calculated from net gold values and quantities obtained quarterly from the South African Reserve Bank (SARB). The index changes quarterly and is published in this publication with a one-quarter lag (e.g. the November 2013 gold value and quantity will only be included in the December 2013 publication).

Glossary

Chain linking	The construction of a continuous price series by multiplying together price indices that have been using different weights for different periods. The resulting index is referred to as a chained index (<i>Practical Guide to Producing Consumer Price Indices, 2009</i>). Linking is intended to ensure that the individual indices on all levels show the correct development through time, but leads to non-additivity (IMF, 2005).
Contributions	The contribution (percentage points) of a sub-index to the percentage change in the total index for a given period is calculated by multiplying the difference (i.e. change) in the sub-index by its weight and then dividing by the previous period's total index. In the case of annual percentage changes, the contributions are approximations owing to annual changes in weights.
Percentage change	The percentage change in an index for any given period is the change between that period's index value and the previous period's index value expressed as a percentage of the latter.

General information

Stats SA publishes approximately 300 different statistical releases each year. It is not economically viable to produce them in more than one of South Africa's 11 official languages. Since the releases are used extensively, not only locally but also by international economic and social-scientific communities, Stats SA releases are published in English only.

Stats SA has a copyright on this publication. Users may apply the information as they wish, provided that they acknowledge Stats SA as the source of the basic data wherever they process, apply, utilise, publish or distribute the data; and also that they specify that the relevant application and analysis (where applicable) result from their own processing of the data.

Advance release calendar

An advance release calendar is disseminated on www.statssa.gov.za.

Forthcoming issues

Issue	Expected release date
July 2023	21 September 2023
August 2023	19 October 2023
September 2023	23 November 2023

Stats SA products

A complete set of Stats SA publications is available at the Stats SA Library and the following libraries:

National Library of South Africa, Pretoria Division
 National Library of South Africa, Cape Town Division
 Natal Society Library, Pietermaritzburg
 Library of Parliament, Cape Town
 Bloemfontein Public Library
 Johannesburg Public Library
 Eastern Cape Library Services, Qonce
 Central Regional Library, Polokwane
 Central Reference Library, Mbombela
 Central Reference Collection, Kimberley
 Central Reference Library, Mmabatho

Stats SA also provides a subscription service.

Electronic services

A large range of data are available via online services. For more details about our electronic data services, contact (012) 310 8600.

You can visit us on the internet at: www.statssa.gov.za.

Enquiries

Technical enquiries	Andrew Rankhumise (012) 406 3304
General enquiries	(012) 310 8600 / 8390 / 8351 / 4892 / 8496 / 8095 (user information services)
Fax number	(012) 310 8332
Email address	andrewr@statssa.gov.za (technical enquiries) info@statssa.gov.za (user information services)
Postal address	Private Bag X44, Pretoria, 0001

Produced by Stats SA