



**stats sa**

Department:  
Statistics South Africa  
**REPUBLIC OF SOUTH AFRICA**

Private Bag X44, Pretoria, 0001, South Africa, ISibalo House, Koch Street, Salvokop, Pretoria, 0002  
www.statssa.gov.za, info@statssa.gov.za, Tel +27 12 310 8911

## **STATISTICAL RELEASE**

### **P0142.7**

# **Export and Import Unit Value Indices**

**January 2024**

The basket and weights for the export and import unit value indices are updated with effect from the January 2024 release.

**Embargoed until:**  
**20 March 2024**  
**11:30**

**ENQUIRIES:**  
Andrew Rankhumise  
Tel: (012) 406 3304

**FORTHCOMING ISSUE:**  
February 2024

**EXPECTED RELEASE DATE:**  
18 April 2024

Dipalopalo tsa Aforikaborwa • Dipalopalo tsa Aforika Borwa • Ezazibalo zaseNingizimu Afrika • Tshitatistika Afrika Tshipembe • Tinhlayo Afrika-Dzonga

Statistieke Suid-Afrika • Dipalopalo tša Aforika Borwa • Telubalo zaseNingizimu Afrika • EzeeNkcukacha maNani zoMzantsi Afrika • Iimbalobalo zeSewula Afrika

**IMPROVING LIVES THROUGH DATA ECOSYSTEMS**



## Contents

<b>Key findings as at January 2024</b> .....	<b>2</b>
Exports.....	2
Imports.....	2
<b>Key figures and analytical series</b> .....	<b>3</b>
Table A – Key figures .....	3
Table B – Analytical series .....	3
<b>Detailed results</b> .....	<b>4</b>
<b>Main index numbers and rates of change (percentage)</b> .....	<b>4</b>
Table C – Exports .....	4
Table D – Imports .....	4
<b>Detailed index numbers and rates of change and contributions</b> .....	<b>6</b>
Table 1 – Exports .....	6
Table 2 – Imports.....	8
<b>Explanatory notes</b> .....	<b>10</b>
<b>Glossary</b> .....	<b>10</b>
<b>General information</b> .....	<b>11</b>

## Key findings as at January 2024

### Exports

The unit value index (UVI) for exported commodities shows an annual rate of change of -1,7% in January 2024. From December 2023 to January 2024 the UVI for exported commodities remained unchanged.

The main negative contributors to the annual rate of -1,7% were ores and minerals (-2,8 percentage points) and metal products, machinery and equipment (-0,9 of a percentage point) – see Figure 4.1.

### Imports

The UVI for imported commodities shows an annual rate of change of 4,4% in January 2024. From December 2023 to January 2024 the UVI for imported commodities decreased by 0,9%.

The main contributors to the annual rate of 4,4% were:

- metal products, machinery and equipment (1,8 percentage points);
- crude petroleum (1,6 percentage points); and
- food products (0,9 of a percentage point) – see Figure 5.1.

The main negative contributor to the monthly decrease of 0,9% was crude petroleum (-1,1 percentage points) – see Figure 5.2.

## Key figures and analytical series

**Table A – Key figures**

Product	Weight	Index (Dec 2020=100)			% change	
		Jan 2023	Dec 2023	Jan 2024	Jan 2024 vs. Dec 2023	Jan 2024 vs. Jan 2023
Exports	100,00	123,4	121,3	121,3	0,0	-1,7
Imports	100,00	130,6	137,6	136,4	-0,9	4,4

**Table B – Analytical series**

Product	Weight	Index (Dec 2020=100)			% change	
		Jan 2023	Dec 2023	Jan 2024	Jan 2024 vs. Dec 2023	Jan 2024 vs. Jan 2023
Exports excluding gold	94,00	125,9	122,9	122,8	-0,1	-2,5
Exports excluding ores and minerals	75,42	113,8	115,7	116,3	0,5	2,2
Exports excluding basic metals	73,87	128,5	128,7	128,4	-0,2	-0,1
Imports excluding crude petroleum	92,86	126,6	130,7	131,0	0,2	3,5

**Risenga Maluleke**  
**Statistician-General**

**Detailed results**

**Main index numbers and rates of change (percentage)**

**Table C – Exports**

**Base: Dec 2020=100**

Year and type	Jan	Feb	Mar	Apr	May	Jun	Jul	Aug	Sep	Oct	Nov	Dec	Average <sup>1</sup>	
2022	Index	111,2	115,2	121,8	124,7	128,2	127,0	128,6	125,6	129,1	129,9	125,5	124,5	124,3
	Rate m/m	-0,8	3,6	5,7	2,4	2,8	-0,9	1,3	-2,3	2,8	0,6	-3,4	-0,8	..
	Rate y/y	8,2	10,2	13,5	15,4	19,7	19,1	15,3	13,4	18,9	19,0	14,6	11,1	14,9
2023	Index	123,4	126,1	126,0	124,3	125,0	122,3	118,8	119,8	122,6	124,1	121,6	121,3	122,9
	Rate m/m	-0,9	2,2	-0,1	-1,3	0,6	-2,2	-2,9	0,8	2,3	1,2	-2,0	-0,2	..
	Rate y/y	11,0	9,5	3,4	-0,3	-2,5	-3,7	-7,6	-4,6	-5,0	-4,5	-3,1	-2,6	-1,1
2024	Index	121,3	..	..	..	..	..	..	..	..	..	..	..	..
	Rate m/m	0,0	..	..	..	..	..	..	..	..	..	..	..	..
	Rate y/y	-1,7	..	..	..	..	..	..	..	..	..	..	..	..

**Table D – Imports**

**Base: Dec 2020=100**

Year and type	Jan	Feb	Mar	Apr	May	Jun	Jul	Aug	Sep	Oct	Nov	Dec	Average <sup>1</sup>	
2022	Index	118,4	118,5	119,4	121,2	126,9	132,0	133,2	134,0	132,2	134,2	135,7	133,0	128,2
	Rate m/m	0,8	0,1	0,8	1,5	4,7	4,0	0,9	0,6	-1,3	1,5	1,1	-2,0	..
	Rate y/y	16,7	12,3	13,7	14,6	20,1	26,4	26,0	23,4	20,4	21,1	20,0	13,2	18,9
2023	Index	130,6	131,1	132,8	134,4	135,0	137,2	136,1	135,9	138,1	140,8	140,7	137,6	135,9
	Rate m/m	-1,8	0,4	1,3	1,2	0,4	1,6	-0,8	-0,1	1,6	2,0	-0,1	-2,2	..
	Rate y/y	10,3	10,6	11,2	10,9	6,4	3,9	2,2	1,4	4,5	4,9	3,7	3,5	6,0
2024	Index	136,4	..	..	..	..	..	..	..	..	..	..	..	..
	Rate m/m	-0,9	..	..	..	..	..	..	..	..	..	..	..	..
	Rate y/y	4,4	..	..	..	..	..	..	..	..	..	..	..	..

<sup>1</sup> Annual average.

**Figure 1 – Export and import unit value indices**

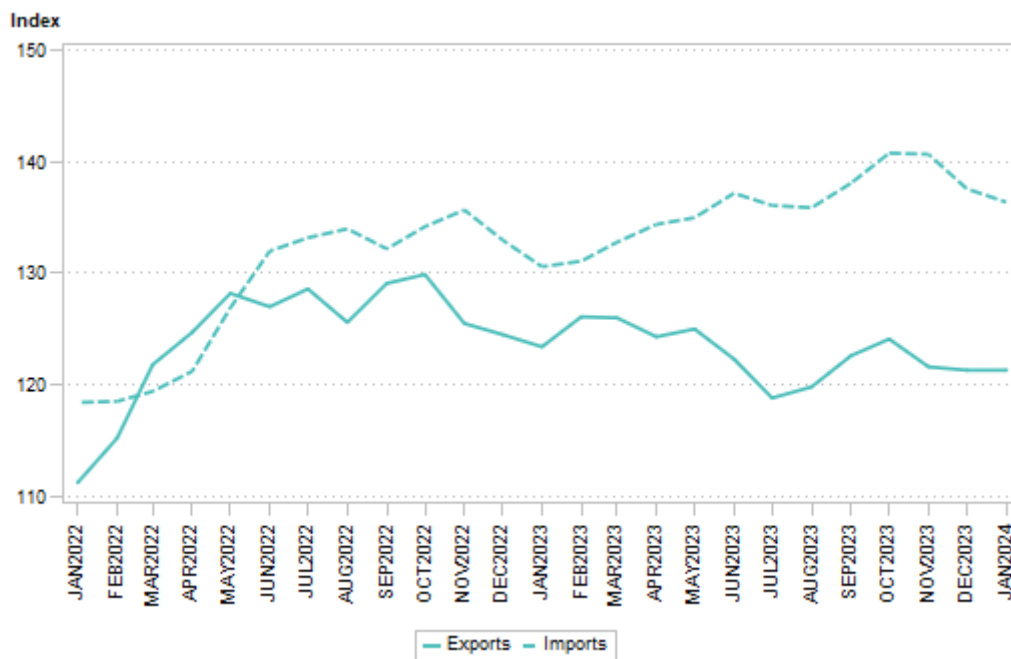


Figure 2 – Export UVI rates of change (percentage)

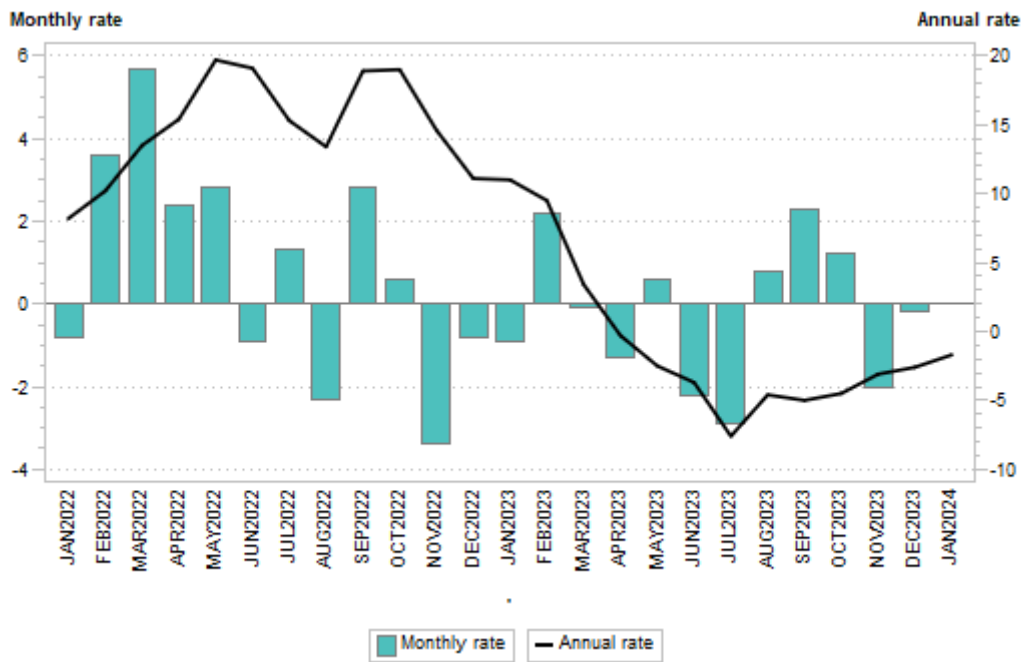
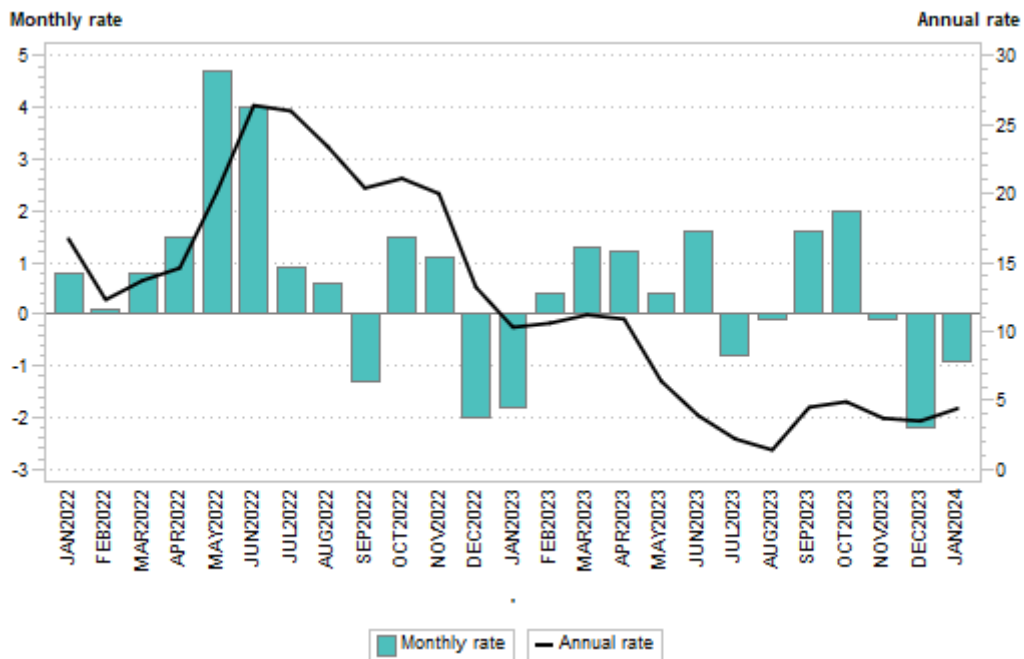


Figure 3 – Import UVI rates of change (percentage)

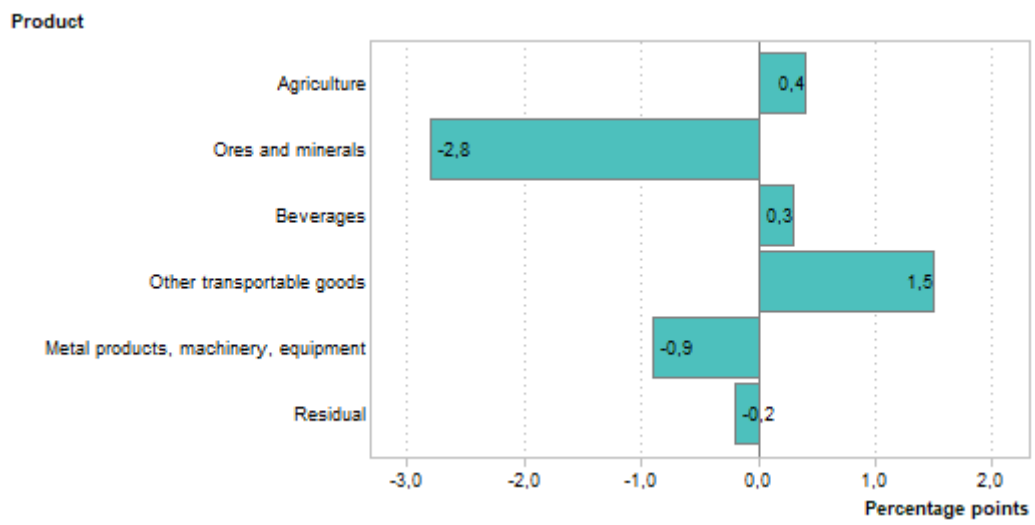


## Detailed index numbers and rates of change and contributions

Table 1 – Exports

Product	Weight	Index (Dec 2020=100)			% change	
		Jan 2023	Dec 2023	Jan 2024	Jan 2024 vs. Dec 2023	Jan 2024 vs. Jan 2023
<b>All items</b>	100,00	123,4	121,3	121,3	0,0	-1,7
<b>Agriculture</b>	6,92	99,2	105,6	107,0	1,3	7,9
<b>Ores and minerals</b>	24,58	159,9	147,8	145,9	-1,3	-8,8
<b>Coal</b>	7,96	245,3	195,3	186,0	-4,8	-24,2
<b>Metal ores</b>	16,62	134,9	152,7	153,8	0,7	14,0
<b>Iron ores and concentrates</b>	6,83	132,7	144,4	147,4	2,1	11,1
<b>Non-ferrous metal ores and concentrates</b>	9,79	132,3	153,7	153,3	-0,3	15,9
<b>Beverages</b>	6,55	108,4	115,8	114,9	-0,8	6,0
<b>Other transportable goods, except metal products, machinery and equipment</b>	16,14	129,8	140,9	141,2	0,2	8,8
<b>Coke oven and refined petroleum products</b>	4,76	162,4	177,4	176,1	-0,7	8,4
<b>Basic chemicals</b>	5,87	127,6	124,4	127,1	2,2	-0,4
<b>Other chemical products</b>	4,08	120,9	163,3	162,3	-0,6	34,2
<b>Rubber and plastic products</b>	1,43	112,0	108,8	108,2	-0,6	-3,4
<b>Metal products, machinery and equipment</b>	45,82	111,0	107,8	108,6	0,7	-2,2
<b>Basic metals</b>	26,13	111,9	102,9	103,6	0,7	-7,4
<b>Basic iron and steel</b>	4,89	125,7	142,5	145,6	2,2	15,8
<b>Products of iron or steel</b>	1,38	144,9	163,1	163,0	-0,1	12,5
<b>Basic precious metals and metals clad with precious metals</b>	16,32	101,5	82,7	83,4	0,8	-17,8
<b>Other semi-finished metal products</b>	3,54	139,2	144,0	142,0	-1,4	2,0
<b>Fabricated metal products</b>	1,12	104,3	92,1	90,0	-2,3	-13,7
<b>General purpose machinery</b>	3,07	110,9	115,1	118,6	3,0	6,9
<b>Special purpose machinery</b>	1,97	145,9	174,9	173,1	-1,0	18,6
<b>Transport equipment: motor vehicles</b>	11,98	102,6	109,1	109,8	0,6	7,0
<b>Other machinery and equipment</b>	1,55	101,4	98,2	99,4	1,2	-2,0

**Figure 4.1 – Contributions to the annual percentage change in exports**



**Figure 4.2 – Contributions to the monthly percentage change in exports**

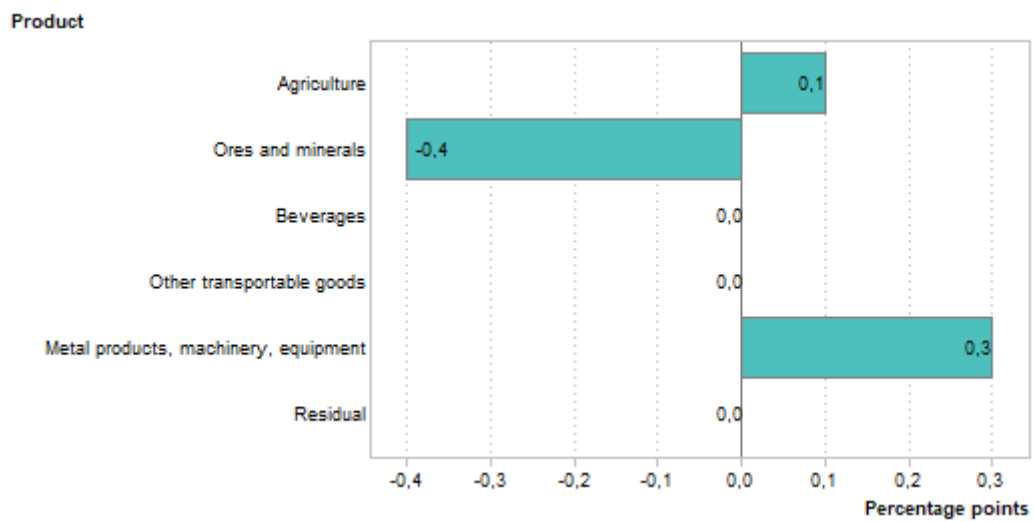
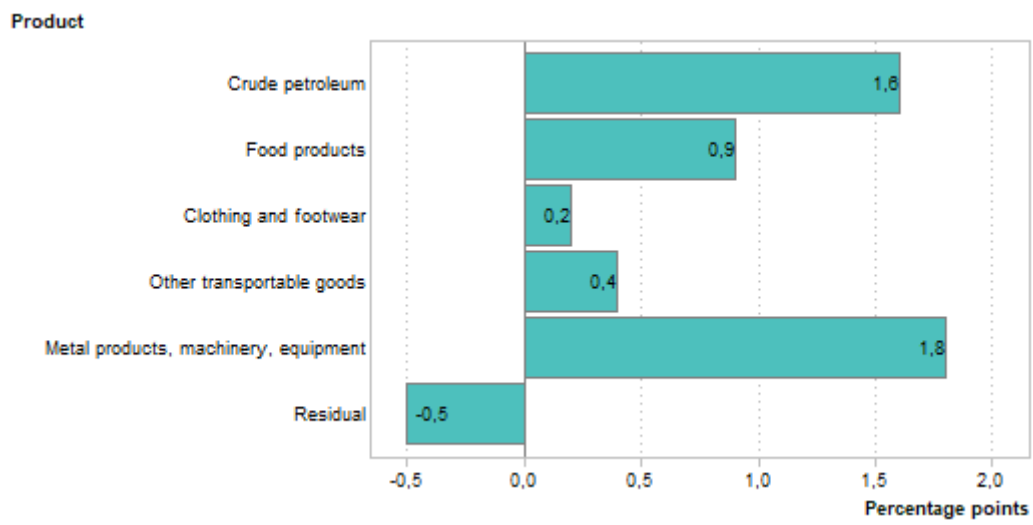




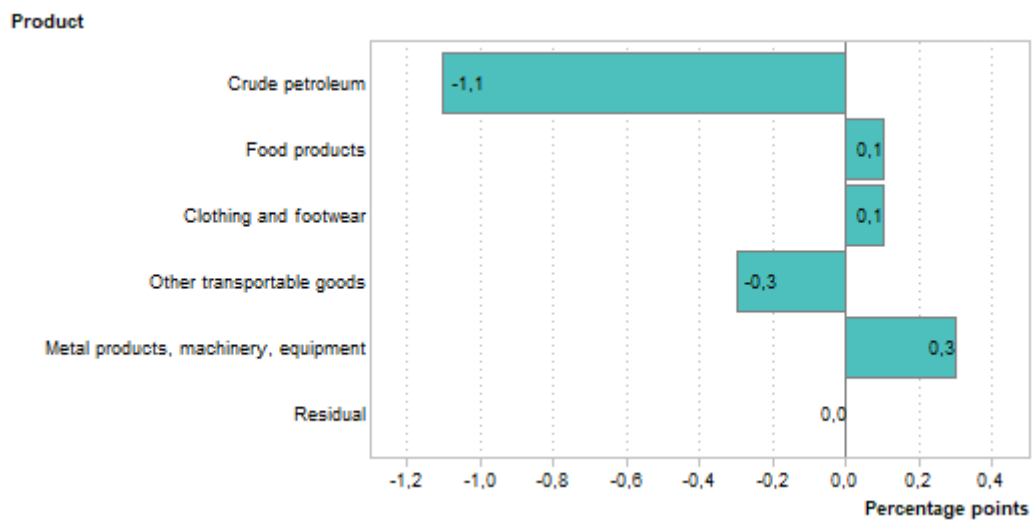
Table 2 – Imports

Product	Weight	Index (Dec 2020=100)			% change	
		Jan 2023	Dec 2023	Jan 2024	Jan 2024 vs. Dec 2023	Jan 2024 vs. Jan 2023
<b>All items</b>	100,00	130,6	137,6	136,4	-0,9	4,4
<b>Crude petroleum</b>	7,14	163,7	214,2	192,6	-10,1	17,7
<b>Food products</b>	5,90	119,8	136,2	139,7	2,6	16,6
<b>Fats and oils</b>	3,05	121,1	118,6	118,9	0,3	-1,8
<b>Grain mill products</b>	2,85	109,6	152,2	159,2	4,6	45,3
<b>Clothing and footwear</b>	4,39	117,0	120,1	123,9	3,2	5,9
<b>Clothing</b>	2,89	116,0	117,3	121,0	3,2	4,3
<b>Footwear</b>	1,50	118,6	125,3	129,0	3,0	8,8
<b>Other transportable goods, except metal products, machinery and equipment</b>	37,11	137,8	140,3	139,1	-0,9	0,9
<b>Paper and paperboard</b>	1,60	143,0	139,0	135,3	-2,7	-5,4
<b>Coke oven and refined petroleum products</b>	18,99	181,8	186,0	180,9	-2,7	-0,5
<b>Basic chemicals</b>	6,32	125,7	124,3	122,8	-1,2	-2,3
<b>Pharmaceutical and other chemical products</b>	7,03	119,3	124,1	131,2	5,7	10,0
<b>Pharmaceutical products</b>	3,28	116,5	112,3	125,0	11,3	7,3
<b>Other chemical products</b>	3,75	122,1	135,6	136,3	0,5	11,6
<b>Rubber and plastic products</b>	2,92	115,1	118,1	120,1	1,7	4,3
<b>Other transportable goods</b>	0,25	117,7	121,8	115,5	-5,2	-1,9
<b>Metal products, machinery and equipment</b>	45,46	121,3	125,7	126,6	0,7	4,4
<b>Basic metals</b>	4,25	137,9	133,0	133,6	0,5	-3,1
<b>Fabricated metal products, except machinery and equipment</b>	1,72	116,5	134,0	135,2	0,9	16,1
<b>General purpose machinery</b>	5,59	122,8	129,6	131,3	1,3	6,9
<b>Special purpose machinery</b>	7,26	114,8	122,6	121,1	-1,2	5,5
<b>Machinery for mining, quarrying and construction and parts thereof</b>	3,13	101,7	106,1	108,3	2,1	6,5
<b>Agricultural or forestry machinery and parts thereof</b>	1,39	99,1	108,3	108,2	-0,1	9,2
<b>Other machinery and parts thereof</b>	2,74	127,8	137,7	131,1	-4,8	2,6
<b>Office, accounting and computing machinery</b>	2,69	116,5	121,1	121,5	0,3	4,3
<b>Electrical machinery and apparatus</b>	4,97	135,8	142,5	146,1	2,5	7,6
<b>Radio, television and communication equipment and apparatus</b>	7,59	122,9	126,8	126,1	-0,6	2,6
<b>Medical appliances, precision and optical instruments, watches and clocks</b>	2,76	117,1	117,5	123,9	5,4	5,8
<b>Transport equipment</b>	8,63	110,5	113,9	114,5	0,5	3,6
<b>Vehicles</b>	8,00	110,4	113,8	114,4	0,5	3,6
<b>Bodies and parts of vehicles</b>	0,63	112,5	114,8	115,9	1,0	3,0

**Figure 5.1 – Contributions to the annual percentage change in imports**



**Figure 5.2 – Contributions to the monthly percentage change in imports**



## Explanatory notes

<b>Purpose and results</b>	The unit value index provides information on the trends in import and export unit values that are weighted with quantities of the current reference period. The calculation of unit value indices of commodities in exports and imports covers transactions reported by the South African Revenue Service (SARS). The results are used to compile export and import unit value indices, which are a measure of changes in export prices of locally produced commodities and changes in prices of imported commodities. Further information can be found in the XMUVI sources and methods document which can be accessed on the Statistics South Africa (Stats SA) website: <a href="http://www.statssa.gov.za/?page_id=2528">http://www.statssa.gov.za/?page_id=2528</a> .
<b>Source</b>	South African Revenue Service (SARS).
<b>Gold</b>	The export unit value index for gold is calculated from net gold values and quantities obtained quarterly from the South African Reserve Bank (SARB).  The index changes quarterly and is published in this publication with a one-quarter lag (e.g. the November 2013 gold value and quantity will only be included in the December 2013 publication).

## Glossary

<b>Chain linking</b>	The construction of a continuous price series by multiplying together price indices that have been using different weights for different periods. The resulting index is referred to as a chained index ( <i>Practical Guide to Producing Consumer Price Indices, 2009</i> ). Linking is intended to ensure that the individual indices on all levels show the correct development through time, but leads to non-additivity (IMF, 2005).
<b>Contributions</b>	The contribution (percentage points) of a sub-index to the percentage change in the total index for a given period is calculated by multiplying the difference (i.e. change) in the sub-index by its weight and then dividing by the previous period's total index. In the case of annual percentage changes, the contributions are approximations owing to annual changes in weights.
<b>Percentage change</b>	The percentage change in an index for any given period is the change between that period's index value and the previous period's index value expressed as a percentage of the latter.

## General information

Stats SA publishes approximately 300 different statistical releases each year. It is not economically viable to produce them in more than one of South Africa's 12 official languages. Since the releases are used extensively, not only locally but also by international economic and social-scientific communities, Stats SA releases are published in English only.

Stats SA has a copyright on this publication. Users may apply the information as they wish, provided that they acknowledge Stats SA as the source of the basic data wherever they process, apply, utilise, publish or distribute the data; and also that they specify that the relevant application and analysis (where applicable) result from their own processing of the data.

### Advance release calendar

An advance release calendar is disseminated on [www.statssa.gov.za](http://www.statssa.gov.za).

### Forthcoming issues

Issue	Expected release date
February 2024	18 April 2024
March 2024	23 May 2024
April 2024	20 June 2024

### Stats SA products

A complete set of Stats SA publications is available at the Stats SA Library and the following libraries:

National Library of South Africa, Pretoria Division  
 National Library of South Africa, Cape Town Division  
 Natal Society Library, Pietermaritzburg  
 Library of Parliament, Cape Town  
 Bloemfontein Public Library  
 Johannesburg Public Library  
 Eastern Cape Library Services, Qonce  
 Central Regional Library, Polokwane  
 Central Reference Library, Mbombela  
 Central Reference Collection, Kimberley  
 Central Reference Library, Mmabatho

Stats SA also provides a subscription service.

### Electronic services

A large range of data are available via online services. For more details about our electronic data services, contact (012) 310 8600.

You can visit us on the internet at: [www.statssa.gov.za](http://www.statssa.gov.za).

### Enquiries

Technical enquiries	Andrew Rankhumise (012) 406 3304
General enquiries	(012) 310 8600 / 8390 / 8351 / 4892 / 8496 / 8095 (user information services)
Fax number	(012) 310 8332
Email address	andrewr@statssa.gov.za (technical enquiries) info@statssa.gov.za (user information services)
Postal address	Private Bag X44, Pretoria, 0001

**Produced by Stats SA**