



**stats sa**

Department:  
Statistics South Africa  
**REPUBLIC OF SOUTH AFRICA**

Private Bag X44, Pretoria, 0001, South Africa, ISibalo House, Koch Street, Salvokop, Pretoria, 0002

www.statssa.gov.za, info@statssa.gov.za, Tel +27 12 310 8911

## **STATISTICAL RELEASE**

### **P0142.7**

# **Export and Import Unit Value Indices**

**January 2023**

**Embargoed until:  
23 March 2023  
11:30**

**ENQUIRIES:**  
Evashnie Govender  
(012) 336 0176

**FORTHCOMING ISSUE:**  
February 2023

**EXPECTED RELEASE DATE:**  
20 April 2023

Dipalopalo tsa Aforikaborwa • Dipalopalo tsa Aforika Borwa • Ezazibalo zaseNingizimu Afrika • Tshitatistika Afrika Tshipembe • Tinhlayo Afrika-Dzonga

Statistieke Suid-Afrika • Dipalopalo tsa Aforika Borwa • Telubalo zaseNingizimu Afrika • EzeeNkcukacha maNani zoMzantsi Afrika • Iimbalobalo zeSewuta Afrika

**IMPROVING LIVES THROUGH DATA ECOSYSTEMS**



## CONTENTS

<b>KEY FINDINGS AS AT JANUARY 2023 .....</b>	<b>3</b>
Exports .....	3
Imports.....	3
Note on methodological changes .....	3
<b>KEY FIGURES AND ANALYTICAL SERIES.....</b>	<b>4</b>
Table A - Key figures .....	4
Table B - Analytical series .....	4
<b>DETAILED RESULTS .....</b>	<b>5</b>
Main index numbers and rates of change (%).....	5
Table C - Exports .....	5
Table D - Imports .....	5
Figure 1 - Export and import unit value indices.....	5
Figure 2 - Export UVI rates of change (%) .....	6
Figure 3 - Import UVI rates of change (%).....	6
Detailed index numbers and rates of change, and contributions .....	7
Table 1 - Exports.....	7
Figure 4.1 - Contributions to the monthly percentage change in exports .....	8
Figure 4.2 - Contributions to the annual percentage change in exports .....	8
Table 2 - Imports .....	9
Figure 5.1 - Contributions to the monthly percentage change in imports.....	10
Figure 5.2 - Contributions to the annual percentage change in imports .....	10
<b>EXPLANATORY NOTES .....</b>	<b>11</b>
<b>GLOSSARY.....</b>	<b>11</b>
<b>GENERAL INFORMATION .....</b>	<b>12</b>

## KEY FINDINGS AS AT JANUARY 2023

### Exports

The UVI for exported commodities shows an annual rate of change of 11,0% in January 2023. From December 2022 to January 2023 the UVI for exported commodities decreased by 0,9%.

The main contributors to the annual rate of 11,0% were ores and minerals (7,6 percentage points) and metal products, machinery and equipment (3,7 percentage points) (see Figure 4.2).

The main contributors to the monthly decrease of 0,9% were ores and minerals (-0,4 of a percentage point) and other transportable goods (-0,4 of a percentage point) (see Figure 4.1).

### Imports

The UVI for imported commodities shows an annual rate of change of 10,3% in January 2023. From December 2022 to January 2023 the UVI for imported commodities decreased by 1,8%.

The main contributors to the annual rate of 10,3% were other transportable goods (5,8 percentage points) and metal products, machinery and equipment (3,9 percentage points) (see Figure 5.2).

The main contributors to the monthly decrease of 1,8% were crude petroleum (-1,1 percentage points) and other transportable goods (-0,9 of a percentage point) (see Figure 5.1).

### Note on methodological changes

The export and import unit value indices (XMUVIs) are compiled from values and corresponding quantities recorded in the customs data provided monthly by the South African Revenue Service (SARS). While the underlying concept is straightforward ('price' = value ÷ quantity), the actual matching of comparable information in the data set is complex.

With effect from this statistical release (January 2023) substantial changes were made in the methodology used to compile the XMUVIs. The main change in the methodology is that the unit values are calculated based on an extended product definition using cluster analysis. This improves the comparability of the observations matched each month. A detailed note and the updated sources and methods document are available on the Statistics South Africa (Stats SA) website at [http://www.statssa.gov.za/?page\\_id=2528](http://www.statssa.gov.za/?page_id=2528).

No revisions were made to the official published data up to December 2022. However, the new time series is not comparable with the previous time series. Indices using the new methodology have been computed from January 2016. Both the previous and new time series are available on the Stats SA website.

The annual reweighting of the XMUVIs was also implemented with effect from this statistical release.

**KEY FIGURES AND ANALYTICAL SERIES****Table A - Key figures**

Product	Weight	Index (Dec 2020=100)			Percentage change	
		Jan 2022	Dec 2022	Jan 2023	Jan 2023 vs. Dec 2022	Jan 2023 vs. Jan 2022
Exports	100,00	111,2	124,5	123,4	-0,9	11,0
Imports	100,00	118,4	133,0	130,6	-1,8	10,3

**Table B - Analytical series**

Product	Weight	Index (Dec 2020=100)			Percentage change	
		Jan 2022	Dec 2022	Jan 2023	Jan 2023 vs. Dec 2022	Jan 2023 vs. Jan 2022
Exports excluding gold	95,53	113,4	127,0	125,9	-0,9	11,0
Exports excluding ores and minerals	72,78	106,4	114,5	113,8	-0,6	7,0
Exports excluding basic metals	72,47	115,9	129,8	128,5	-1,0	10,9
Imports excluding crude petroleum	93,62	114,9	127,6	126,6	-0,8	10,2

**Risenga Maluleke**  
**Statistician-General**

**DETAILED RESULTS**

**Main index numbers and rates of change (%)**

**Table C - Exports**

**Base: Dec 2020=100**

Year and type	Jan	Feb	Mar	Apr	May	Jun	Jul	Aug	Sep	Oct	Nov	Dec	Average	
2021	Index	102,8	104,5	107,3	108,1	107,1	106,6	111,5	110,8	108,6	109,2	109,5	112,1	108,2
	Rate m/m	2,8	1,7	2,7	0,7	-0,9	-0,5	4,6	-0,6	-2,0	0,6	0,3	2,4	..
	Rate y/y	10,9	9,3	7,9	6,3	7,7	7,0	12,3	9,9	7,6	8,3	9,8	12,1	9,1
2022	Index	111,2	115,2	121,8	124,7	128,2	127,0	128,6	125,6	129,1	129,9	125,5	124,5	124,3
	Rate m/m	-0,8	3,6	5,7	2,4	2,8	-0,9	1,3	-2,3	2,8	0,6	-3,4	-0,8	..
	Rate y/y	8,2	10,2	13,5	15,4	19,7	19,1	15,3	13,4	18,9	19,0	14,6	11,1	14,9
2023	Index	123,4	..	..	..	..	..	..	..	..	..	..	..	..
	Rate m/m	-0,9	..	..	..	..	..	..	..	..	..	..	..	..
	Rate y/y	11,0	..	..	..	..	..	..	..	..	..	..	..	..

**Table D - Imports**

**Base: Dec 2020=100**

Year and type	Jan	Feb	Mar	Apr	May	Jun	Jul	Aug	Sep	Oct	Nov	Dec	Average	
2021	Index	101,5	105,5	105,0	105,8	105,7	104,4	105,7	108,6	109,8	110,8	113,1	117,5	107,8
	Rate m/m	1,5	3,9	-0,5	0,8	-0,1	-1,2	1,2	2,7	1,1	0,9	2,1	3,9	..
	Rate y/y	3,4	6,7	4,9	2,0	1,5	3,0	2,3	4,0	4,8	7,4	11,6	17,5	5,7
2022	Index	118,4	118,5	119,4	121,2	126,9	132,0	133,2	134,0	132,2	134,2	135,7	133,0	128,2
	Rate m/m	0,8	0,1	0,8	1,5	4,7	4,0	0,9	0,6	-1,3	1,5	1,1	-2,0	..
	Rate y/y	16,7	12,3	13,7	14,6	20,1	26,4	26,0	23,4	20,4	21,1	20,0	13,2	18,9
2023	Index	130,6	..	..	..	..	..	..	..	..	..	..	..	..
	Rate m/m	-1,8	..	..	..	..	..	..	..	..	..	..	..	..
	Rate y/y	10,3	..	..	..	..	..	..	..	..	..	..	..	..

**Figure 1 - Export and import unit value indices**

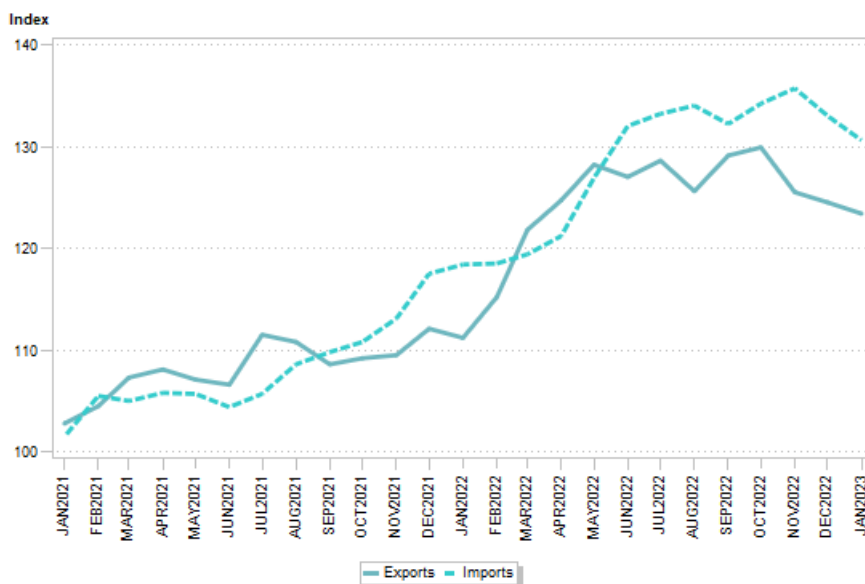


Figure 2 - Export UVI rates of change (%)

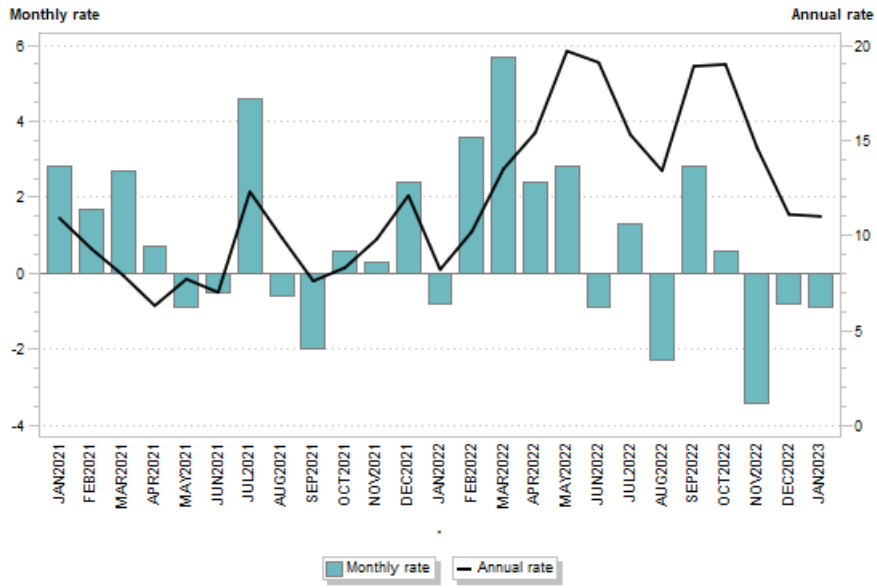
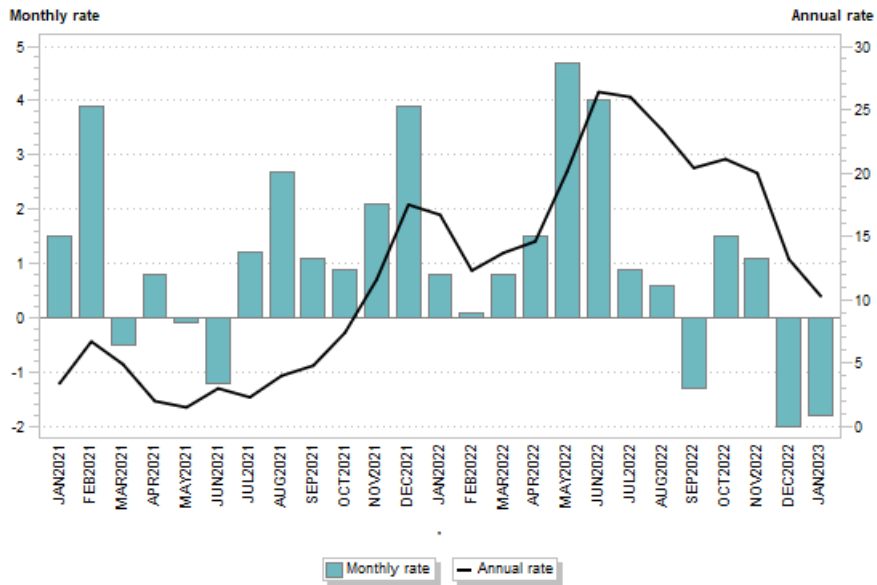


Figure 3 - Import UVI rates of change (%)

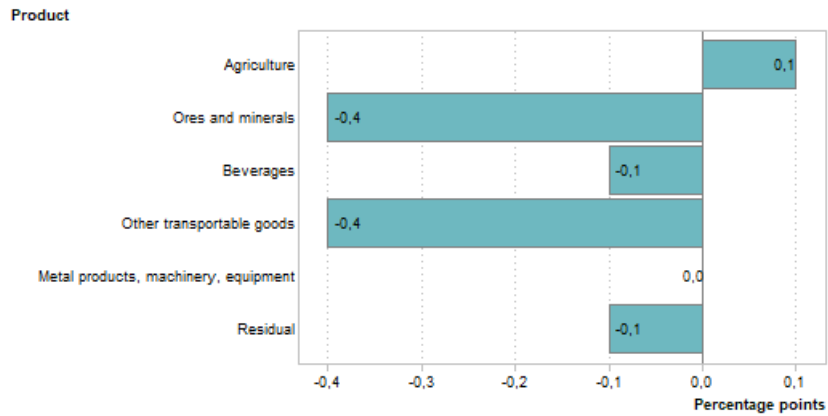


## Detailed index numbers and rates of change, and contributions

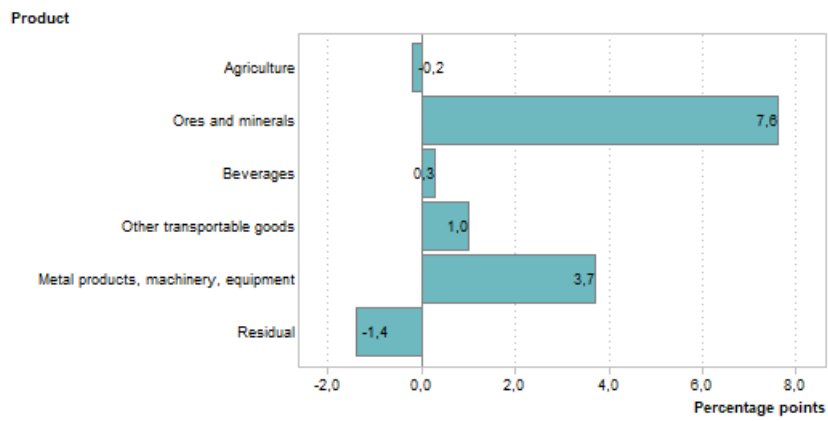
Table 1 - Exports

Product	Weight	Index (Dec 2020=100)			Percentage change	
		Jan 2022	Dec 2022	Jan 2023	Jan 2023 vs. Dec 2022	Jan 2023 vs. Jan 2022
All items	100,00	111,2	124,5	123,4	-0,9	11,0
Agriculture	6,00	102,4	97,0	99,2	2,3	-3,1
Ores and minerals	27,22	128,7	161,8	159,9	-1,2	24,2
Coal	12,56	194,6	245,7	245,3	-0,2	26,1
Metal ores	14,66	110,6	138,9	134,9	-2,9	22,0
Iron ores and concentrates	6,03	102,5	134,6	132,7	-1,4	29,5
Non-ferrous metal ores and concentrates	8,63	116,8	137,6	132,3	-3,9	13,3
Beverages	5,90	102,6	111,1	108,4	-2,4	5,7
Other transportable goods, except metal products, machinery and equipment	16,58	123,2	132,7	129,8	-2,2	5,4
Coke oven and refined petroleum products	4,30	130,5	168,0	162,4	-3,3	24,4
Basic chemicals	7,09	136,2	133,2	127,6	-4,2	-6,3
Other chemical products	3,70	109,3	118,7	120,9	1,9	10,6
Rubber and plastic products	1,49	103,0	108,2	112,0	3,5	8,7
Metal products, machinery and equipment	44,30	101,7	111,0	111,0	0,0	9,1
Basic metals	27,53	100,1	112,1	111,9	-0,2	11,8
Basic iron and steel	4,06	128,1	122,6	125,7	2,5	-1,9
Products of iron or steel	1,41	149,9	145,1	144,9	-0,1	-3,3
Basic precious metals and metals clad with precious metals	18,90	90,0	104,7	101,5	-3,1	12,8
Other semi-finished metal products	3,16	119,9	125,1	139,2	11,3	16,1
Fabricated metal products	1,13	114,4	107,9	104,3	-3,3	-8,8
General purpose machinery	3,17	110,0	111,5	110,9	-0,5	0,8
Special-purpose machinery	1,73	119,8	137,0	145,9	6,5	21,8
Transport equipment: motor vehicles	9,34	99,0	103,8	102,6	-1,2	3,6
Other machinery and equipment	1,39	99,3	98,0	101,4	3,5	2,1

**Figure 4.1 - Contributions to the monthly percentage change in exports**



**Figure 4.2 - Contributions to the annual percentage change in exports**



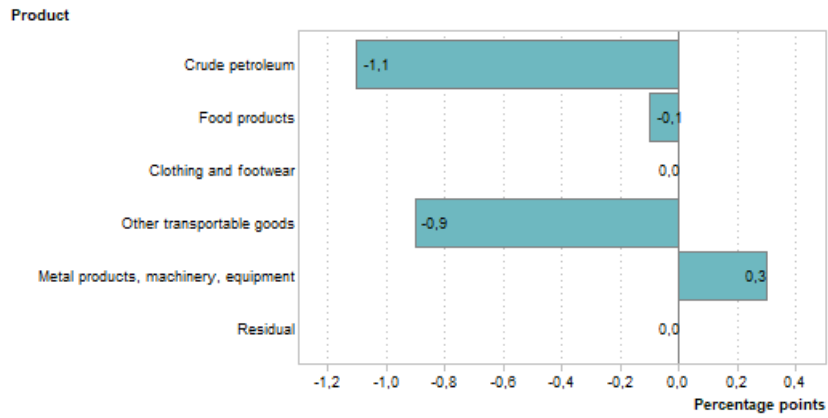
Note: The negative residual in Figure 4.2 is mainly the result of the change in the weights of products between 2022 and 2023.



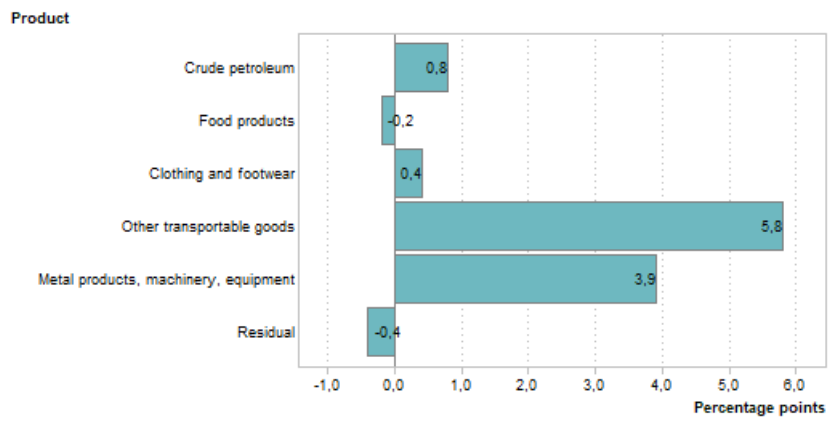
Table 2 - Imports

Product		Weight	Index (Dec 2020=100)			Percentage change	
			Jan 2022	Dec 2022	Jan 2023	Jan 2023 vs. Dec 2022	Jan 2023 vs. Jan 2022
<b>All items</b>		100,00	118,4	133,0	130,6	-1,8	10,3
<b>Crude petroleum</b>		6,38	148,9	187,5	163,7	-12,7	9,9
<b>Food products</b>		5,97	122,8	121,0	119,8	-1,0	-2,4
<b>Fats and oils</b>		3,49	146,4	121,1	121,1	0,0	-17,3
<b>Grain mill products</b>		2,48	94,2	112,7	109,6	-2,8	16,3
<b>Clothing and footwear</b>		4,71	106,2	116,2	117,0	0,7	10,2
<b>Clothing</b>		3,07	105,1	116,0	116,0	0,0	10,4
<b>Footwear</b>		1,64	108,3	116,5	118,6	1,8	9,5
<b>Other transportable goods, except metal products, machinery and equipment</b>		41,87	121,3	140,6	137,8	-2,0	13,6
<b>Paper and paperboard</b>		1,81	115,4	145,4	143,0	-1,7	23,9
<b>Coke oven and refined petroleum products</b>		21,13	143,3	186,2	181,8	-2,4	26,9
<b>Basic chemicals</b>		8,57	122,8	127,2	125,7	-1,2	2,4
<b>Pharmaceutical and other chemical products</b>		7,00	110,3	121,1	119,3	-1,5	8,2
<b>Pharmaceutical products</b>		3,39	111,0	119,4	116,5	-2,4	5,0
<b>Other chemical products</b>		3,60	109,5	122,9	122,1	-0,7	11,5
<b>Rubber and plastic products</b>		2,85	107,3	118,8	115,1	-3,1	7,3
<b>Other transportable goods</b>		0,52	119,2	114,0	117,7	3,2	-1,3
<b>Metal products, machinery and equipment</b>		41,08	110,0	120,3	121,3	0,8	10,3
<b>Basic metals</b>		4,49	128,2	132,8	137,9	3,8	7,6
<b>Fabricated metal products, except machinery and equipment</b>		1,88	114,7	116,2	116,5	0,3	1,6
<b>General purpose machinery</b>		5,15	105,7	120,7	122,8	1,7	16,2
<b>Special purpose machinery</b>		6,24	110,0	114,4	114,8	0,3	4,4
<b>Machinery for mining, quarrying and construction, and parts thereof</b>		2,54	100,0	101,7	101,7	0,0	1,7
<b>Agricultural or forestry machinery and parts thereof</b>		1,07	93,8	95,4	99,1	3,9	5,7
<b>Other machinery and parts thereof</b>		2,64	121,0	128,7	127,8	-0,7	5,6
<b>Office, accounting and computing machinery</b>		2,70	105,0	116,7	116,5	-0,2	11,0
<b>Electrical machinery and apparatus</b>		3,79	124,1	134,8	135,8	0,7	9,4
<b>Radio, television and communication equipment and apparatus</b>		6,03	101,0	123,7	122,9	-0,6	21,7
<b>Medical appliances, precision and optical instruments, watches and clocks</b>		2,54	106,1	116,5	117,1	0,5	10,4
<b>Transport equipment</b>		8,25	103,5	110,3	110,5	0,2	6,8
<b>Vehicles</b>		7,71	103,5	110,3	110,4	0,1	6,7
<b>Bodies and parts of vehicles</b>		0,54	103,5	110,4	112,5	1,9	8,7

**Figure 5.1 - Contributions to the monthly percentage change in imports**



**Figure 5.2 - Contributions to the annual percentage change in imports**



## EXPLANATORY NOTES

- Purpose and results** 1 The unit value index provides information on the trends in import and export unit values that are weighted with quantities of the current reference period. The calculation of unit value indices of commodities in exports and imports covers transactions reported by the South African Revenue Service. The results are used to compile export and import unit value indices, which are a measure of changes in export prices of locally produced commodities and changes in prices of imported commodities. Further information can be found in the XMUVI sources and methods document which can be accessed on the Stats SA website: [http://www.statssa.gov.za/?page\\_id=2528](http://www.statssa.gov.za/?page_id=2528).
- Source** 2 South African Revenue Service (SARS).
- Gold** 3 The export unit value index for gold is calculated from net gold values and quantities obtained from the South African Reserve Bank (SARB) quarterly.
- The index changes quarterly and is published in this publication with a one quarter lag (e.g. the November 2013 gold value and quantity will only be included in the December 2013 publication).

## GLOSSARY

- Chain linking** The construction of a continuous price series by multiplying together price indices that have been using different weights for different periods. The resulting index is referred to as a chained index (*Practical Guide to Producing Consumer Price Indices*, 2009). Linking is intended to ensure that the individual indices on all levels show the correct development through time, but leads to non-additivity (IMF, 2005).
- Contributions** The contribution (percentage points) of a sub-index to the percentage change in the total index for a given period is calculated by multiplying the difference (i.e. change) in the sub index by its weight and then dividing by the previous period's total index. In the case of annual percentage changes, the contributions are approximations owing to annual changes in weights.
- Percentage change** The percentage change in an index for any given period is the change between that period's index value and the previous period's index value expressed as a percentage of the latter.

## GENERAL INFORMATION

Stats SA publishes approximately 300 different statistical releases each year. It is not economically viable to produce them in more than one of South Africa's eleven official languages. Since the releases are used extensively, not only locally but also by international economic and social-scientific communities, Stats SA releases are published in English only.

Stats SA has copyright on this publication. Users may apply the information as they wish, provided that they acknowledge Stats SA as the source of the basic data wherever they process, apply, utilise, publish or distribute the data; and also that they specify that the relevant application and analysis (where applicable) result from their own processing of the data.

### Advance release calendar

An advance release calendar is disseminated on [www.statssa.gov.za](http://www.statssa.gov.za)

### Forthcoming issues

Issue	Expected release date
February 2023	20 April 2023
March 2023	18 May 2023
April 2023	22 June 2023

### Stats SA products

A complete set of Stats SA publications is available at the Stats SA Library and the following libraries:

National Library of South Africa, Pretoria Division  
 National Library of South Africa, Cape Town Division  
 Natal Society Library, Pietermaritzburg  
 Library of Parliament, Cape Town  
 Bloemfontein Public Library  
 Johannesburg Public Library  
 Eastern Cape Library Services, Qonce  
 Central Regional Library, Polokwane  
 Central Reference Library, Mbombela  
 Central Reference Collection, Kimberley  
 Central Reference Library, Mmabatho

Stats SA also provides a subscription service.

### Electronic services

A large range of data are available via online services. For more details about our electronic data services, contact (012) 310 8600.

You can visit us on the internet at: [www.statssa.gov.za](http://www.statssa.gov.za)

### Enquiries

Technical enquiries	Evashnie Govender (012) 310 0167 <a href="mailto:Evashnieg@statssa.gov.za">Evashnieg@statssa.gov.za</a>
User information services	Telephone number: (012) 310 8600 Email address: <a href="mailto:info@statssa.gov.za">info@statssa.gov.za</a>
Orders/subscription services	Telephone number: (012) 310 8619 Email address: <a href="mailto:millies@statssa.gov.za">millies@statssa.gov.za</a>
Postal address	Private Bag X44, Pretoria, 0001

*Produced by Stats SA*