



**Statistics
South Africa**

Preferred supplier of quality statistics



Statistical release

P0142.1

PRODUCER PRICE INDEX (PPI)

OCTOBER 2010

**Embargoed until:
25 November 2010
11:30**

Enquiries:

Marais Kleu
(012) 310 8170

Forthcoming issue:

November 2010

Expected release date

15 December 2010

KEY FIGURES AS AT OCTOBER 2010

Producer Price Index and rates of change according to main components

Base: 2000 = 100

Producer Price Index components	Indices			Percentage change between	
	Oct 2009	Sep 2010	Oct 2010	Sep 2010 and Oct 2010	Oct 2009 and Oct 2010
Domestic output	179,7	192,0	191,2	-0,4	+6,4
Exported commodities	155,0	165,4	165,2	-0,1	+6,6
Imported commodities	146,9	148,7	148,8	+0,1	+1,3

KEY FINDINGS AS AT OCTOBER 2010

The annual percentage change in the PPI was **+6,4%** in October 2010 (i.e. the PPI in October 2010 compared with October 2009).

The *Producer Price Index (PPI)* for domestic output shows an annual rate of change of **+6,4%** in October 2010 (i.e. the PPI in October 2010 compared with October 2009). This rate is **0,4** of a percentage point lower than the corresponding annual rate of **+6,8%** in September 2010 (see Table 1(A), p.5). This lower annual rate in October 2010 can be explained by decreases in the annual rate of change in the *Producer Price Indices* for:

- *Forestry*: the annual rate decreased from **+25,9%** in September 2010 to **+23,1%** in October 2010.
- *Mining and quarrying*: the annual rate decreased from **+18,3%** in September 2010 to **+14,0%** in October 2010.
- *Basic metals*: the annual rate decreased from **+9,3%** in September 2010 to **+7,8%** in October 2010.

These decreases were partially counteracted by increases in the annual rate of change for:

- *Products of petroleum and coal*: the annual rate increased from **-1,2%** in September 2010 to **4,1%** in October 2010.
- *Chemicals and chemical products*: the annual rate increased from **0,0%** in September 2010 to **+1,5%** in October 2010.
- *Electricity*: the annual rate increased from **+17,2%** in September 2010 to **+20,6%** in October 2010.

From September 2010 to October 2010 the PPI for domestic output decreased by 0,4%.

The monthly decrease of **0,4%** in the PPI for domestic output was mainly due to monthly contributions from decreases in the price indices of electricity (**-0,6** of a percentage point) and basic metals (**-0,1** of a percentage point). These decreases were partially counteracted by increases in the price indices of agriculture (**+0,1** of a percentage point), mining and quarrying (**+0,1** of a percentage point) and all other groups (**+0,1** of a percentage point) (see Table 3, p.6).

The PPI for exported commodities shows an annual rate of change of +6,6% in October 2010 (i.e. the PPI in October 2010 compared with October 2009). This rate is 1,0 percentage point lower than the corresponding annual rate of +7,6% in September 2010 (see Table 1(B), p.5).

The annual increase of 6,6% in the PPI for exported commodities was mainly due to annual contributions from increases in the price indices of mining and quarrying (+4,6 percentage points), basic metals (+2,3 percentage points), paper and paper products (+0,2 of a percentage point) and all other groups (+0,1 of a percentage point). These increases were partially counteracted by decreases in the price indices of food at manufacturing (-0,3 of a percentage point), agriculture (-0,1 of a percentage point), chemicals and chemical products (-0,1 of a percentage point) and radio, television and communication equipment and apparatus (-0,1 of a percentage point) (see Table 4, p.7).

From September 2010 to October 2010 the PPI for exported commodities decreased by 0,1%.

The monthly decrease of 0,1% in the PPI for exported commodities was mainly due to a monthly contribution from a decrease in the price index of basic metals (-0,3 of a percentage point). This decrease was partially counteracted by increases in the price indices of chemicals and chemical products (+0,1 of a percentage point) and all other groups (+0,1 of a percentage point) (see Table 5, p.7).

The PPI for imported commodities shows an annual rate of change of +1,3% in October 2010 (i.e. the PPI in October 2010 compared with October 2009). This rate is 0,6 of a percentage point higher than the corresponding annual rate of +0,7% in September 2010 (see Table 1(C), p.5).

The annual increase of 1,3% in the PPI for imported commodities was mainly due to annual contributions from increases in the price indices of mining and quarrying (+1,8 percentage points), agriculture (+0,1 of a percentage point), chemicals and chemical products (+0,1 of a percentage point), basic metals (+0,1 of a percentage point) and office, accounting and computing machinery (+0,1 of a percentage point). These increases were partially counteracted by decreases in the price indices of non-electrical machinery and equipment (-0,3 of a percentage point), radio, television and communication equipment and apparatus (-0,2 of a percentage point), food at manufacturing (-0,1 of a percentage point), paper and paper products (-0,1 of a percentage point), products of petroleum and coal (-0,1 of a percentage point) and metal products (-0,1 of a percentage point) (see Table 6, p.8).

From September 2010 to October 2010 the PPI for imported commodities increased by 0,1%.

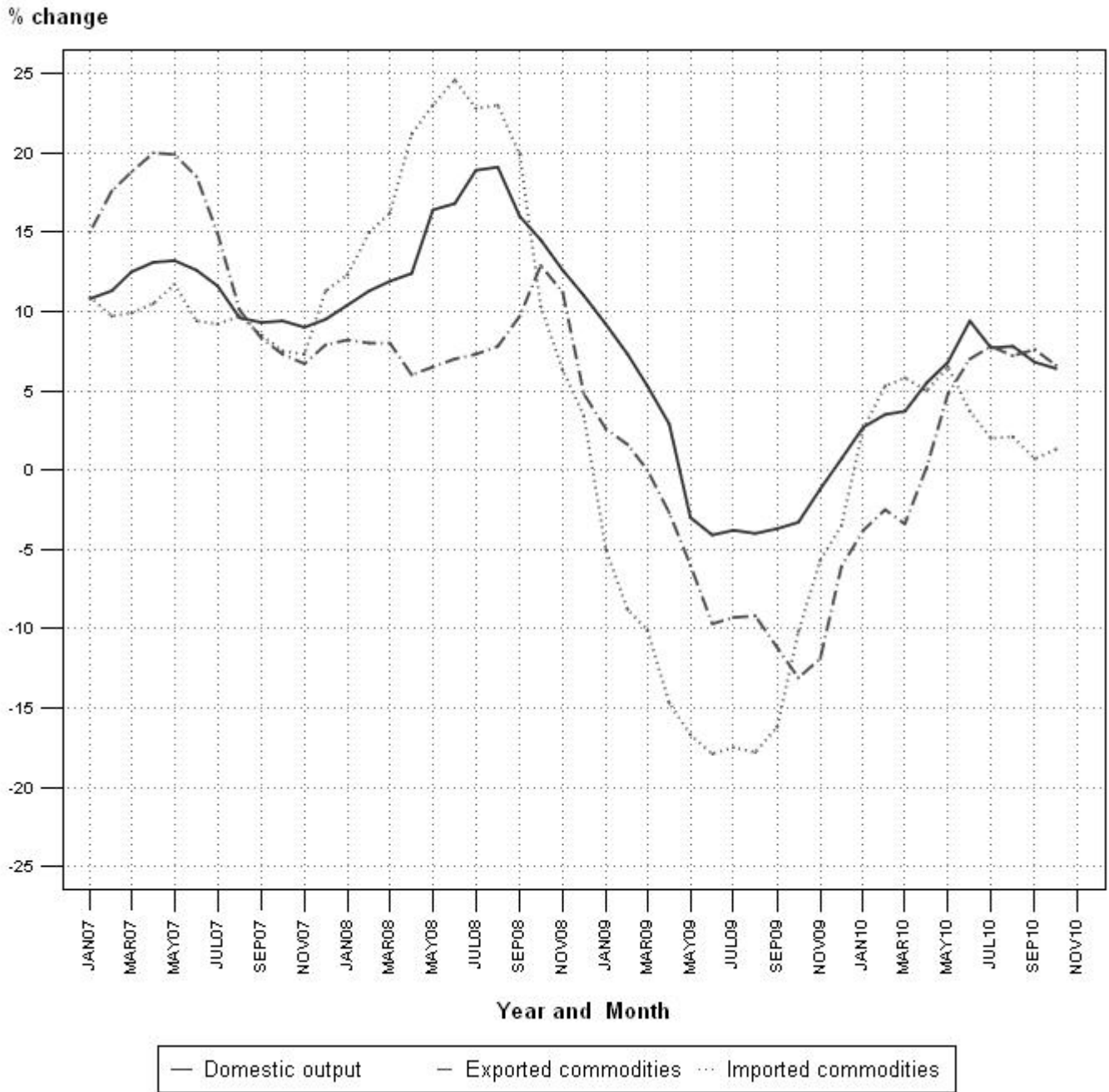
The monthly increase of 0,1% in the PPI for imported commodities was mainly due to monthly contributions from increases in the price index of office, accounting and computing machinery (+0,1 of a percentage point) and all other groups (+0,1 of a percentage point). These increases were partially counteracted by a decrease in the price index of radio, television and communication equipment and apparatus (-0,1 of a percentage point) (see Table 7, p.8).

Note on PPI quarterly surveys

Historically, Stats SA surveyed certain prices for the PPI on a quarterly basis. From this release (PPI for October 2010) all products are surveyed on a monthly basis to ensure responsiveness of the index to price changes.

The affected categories are: beverages; tobacco products; leather and leather products; footwear; wood and wood products; paper and paper products; chemicals and chemical products; rubber and plastic products; medical appliances, precision and optical instruments, watches and clocks; non-metallic mineral products; basic metals; metal products; non-electrical machinery and equipment; office, accounting and computing machinery; electrical machinery and apparatus; radio, television and communication equipment and parts thereof; transport; furniture; other manufactures; textile and made-up goods; and wearing apparel.

Figure 1 – Annual percentage change in the Producer Price Index:



Source: Stats SA

P J Lehohla
Statistician General: Statistics South Africa

CONTENTS

Page

KEY FIGURES AS AT OCTOBER 2010.....1

Figure 1 – Annual percentage change in the Producer Price Index:.....3

Table 1 – The Producer Price Index (PPI) and the annual percentage change in the PPI on a monthly basis..... 5

Table 2 – Contributions to the annual percentage change in the PPI for domestic output of South African industry.....6

Table 3 – Contributions to the monthly percentage change in the PPI for domestic output of South African industry.....6

Table 4 – Contributions to the annual percentage change in the PPI for exported commodities according to group..... 7

Table 5 – Contributions to the monthly percentage change in the PPI for exported commodities according to group..... 7

Table 6 – Contributions to the annual percentage change in the PPI for imported commodities according to group..... 8

Table 7 – Contributions to the monthly percentage change in the PPI for imported commodities according to group..... 8

Table 8 – Producer Price Index for domestic output of South African industry groups.....9

Table 9 – Producer Price Index for exported commodities according to group.....11

Table 10 – Producer Price Index for imported commodities according to group.....13

Table 11 – Producer Price Index for materials used in certain industries.....15

Table 12 – Producer Price Index for selected materials.....16

NOTES.....19

ADDITIONAL INFORMATION.....22

GLOSSARY.....25

FOR MORE INFORMATION.....26

Produced by Stats SA.....26

Table 1 The Producer Price Index (PPI) and the annual percentage change in the PPI on a monthly basis

Base: 2000 = 100

A) Domestic output

Year		Jan	Feb	Mar	Apr	May	Jun	Jul	Aug	Sep	Oct	Nov	Dec
2008	Index	164,9	167,2	170,6	174,1	182,7	187,5	192,5	193,5	186,7	185,8	183,4	181,3
	%	+10,4	+11,3	+11,9	+12,4	+16,4	+16,8	+18,9	+19,1	+16,0	+14,5	+12,6	+11,0
2009	Index	180,0	179,4	179,6	179,2	177,2	179,9	185,2	185,8	179,8	179,7	181,2	182,5
	%	+9,2	+7,3	+5,3	+2,9	-3,0	-4,1	-3,8	-4,0	-3,7	-3,3	-1,2	+0,7
2010	Index	184,9	185,6	186,2	189,0	189,3	196,8	199,4	200,2	192,0	191,2
	%	+2,7	+3,5	+3,7	+5,5	+6,8	+9,4	+7,7	+7,8	+6,8	+6,4

B) Exported commodities

Year		Jan	Feb	Mar	Apr	May	Jun	Jul	Aug	Sep	Oct	Nov	Dec
2008	Index	160,9	162,7	165,6	165,5	168,9	171,7	170,6	170,5	173,1	178,3	177,9	167,8
	%	+8,2	+8,0	+8,0	+6,0	+6,5	+7,0	+7,3	+7,8	+9,7	+12,9	+11,2	+4,8
2009	Index	165,1	165,3	165,6	161,0	158,8	155,1	154,8	154,8	153,7	155,0	156,8	157,5
	%	+2,6	+1,6	+0,0	-2,7	-6,0	-9,7	-9,3	-9,2	-11,2	-13,1	-11,9	-6,1
2010	Index	158,8	161,1	159,9	161,3	166,4	165,9	166,8	165,9	165,4	165,2
	%	-3,8	-2,5	-3,4	+0,2	+4,8	+7,0	+7,8	+7,2	+7,6	+6,6

C) Imported commodities

Year		Jan	Feb	Mar	Apr	May	Jun	Jul	Aug	Sep	Oct	Nov	Dec
2008	Index	154,5	156,3	159,0	169,1	172,8	176,6	177,5	179,5	176,2	163,6	158,8	156,5
	%	+12,3	+15,0	+16,2	+21,2	+23,0	+24,6	+22,8	+23,0	+19,9	+10,3	+6,3	+3,4
2009	Index	146,8	142,5	143,0	144,3	143,9	145,0	146,5	147,6	147,6	146,9	149,8	151,0
	%	-5,0	-8,8	-10,1	-14,7	-16,7	-17,9	-17,5	-17,8	-16,2	-10,2	-5,7	-3,5
2010	Index	150,6	150,1	151,3	151,5	153,3	150,4	149,4	150,7	148,7	148,8
	%	+2,6	+5,3	+5,8	+5,0	+6,5	+3,7	+2,0	+2,1	+0,7	+1,3

Table 2 Contributions to the annual percentage change in the PPI for domestic output of South African industry groups

Group	Contribution at Sep 2010	Contribution at Oct 2010
Forestry	+0,3	+0,2
Mining and quarrying	+3,4	+2,7
Beverages	+0,1	+0,1
Tobacco products	+0,1	+0,1
Paper and paper products	+0,1	+0,1
Products of petroleum and coal	-0,1	+0,2
Chemicals and chemical products	0,0	+0,1
Rubber and plastic products	+0,1	+0,1
Non-metallic mineral products	+0,1	+0,1
Basic metals	+0,8	+0,7
Metal products	-0,1	-0,1
Other manufactures	+0,3	+0,3
Electricity	+1,3	+1,4
Gas and water	+0,3	+0,3
All other groups	+0,1	+0,1
All groups	+6,8	+6,4

Table 3 Contributions to the monthly percentage change in the PPI for domestic output of South African industry groups

Group	Contribution at Sep 2010	Contribution at Oct 2010
Agriculture	-0,1	+0,1
Mining and quarrying	-0,2	+0,1
Products of petroleum and coal	-0,1	0,0
Chemicals and chemical products	+0,1	0,0
Basic metals	0,0	-0,1
Electricity	-3,9	-0,6
All other groups	+0,1	+0,1
All groups	-4,1	-0,4

Table 4 Contributions to the annual percentage change in the PPI for exported commodities according to group

Group	Contribution at Sep 2010	Contribution at Oct 2010
Agriculture	0,0	-0,1
Mining and quarrying	+5,2	+4,6
Food at manufacturing	-0,2	-0,3
Paper and paper products	+0,2	+0,2
Chemicals and chemical products	-0,2	-0,1
Basic metals	+2,7	+2,3
Radio, television and communication equipment and apparatus	0,0	-0,1
All other groups	-0,1	+0,1
All groups	+7,6	+6,6

Table 5 Contributions to the monthly percentage change in the PPI for exported commodities according to group

Group	Contribution at Sep 2010	Contribution at Oct 2010
Mining and quarrying	-0,3	0,0
Chemicals and chemical products	0,0	+0,1
Basic metals	0,0	-0,3
All other groups	0,0	+0,1
All groups	-0,3	-0,1

Table 6 Contributions to the annual percentage change in the PPI for imported commodities according to group

Group	Contribution at Sep 2010	Contribution at Oct 2010
Agriculture	+0,1	+0,1
Mining and quarrying	+1,5	+1,8
Food at manufacturing	-0,1	-0,1
Paper and paper products	-0,1	-0,1
Products of petroleum and coal	-0,1	-0,1
Chemicals and chemical products	0,0	+0,1
Basic metals	+0,1	+0,1
Metal products	-0,1	-0,1
Non-electrical machinery and equipment	-0,4	-0,3
Office, accounting and computing machinery	0,0	+0,1
Radio, television and communication equipment and apparatus	-0,1	-0,2
Transport	+0,1	0,0
All other groups	-0,2	0,0
All groups	+0,7	+1,3

Table 7 Contributions to the monthly percentage change in the PPI for imported commodities according to group

Group	Contribution at Sep 2010	Contribution at Oct 2010
Mining and quarrying	-1,3	0,0
Basic metals	+0,1	0,0
Non-electrical machinery and equipment	-0,1	0,0
Office, accounting and computing machinery	0,0	+0,1
Radio, television and communication equipment and apparatus	0,0	-0,1
All other groups	0,0	+0,1
All groups	-1,3	+0,1

Table 8 Producer Price Index for domestic output of South African industry groups
Base: 2000 = 100

Origin/Group	Weight	Indices			% change between	
		Oct 2009	Sep 2010	Oct 2010	Sep 2010 and Oct 2010	Oct 2009 and Oct 2010
All groups	100,00	179,7	192,0	191,2	-0,4	+6,4
1. Agriculture, forestry, fishing and mining	29,36	178,2	195,7	196,9	+0,6	+10,5
1.1 Agriculture	8,22	186,2	183,8	186,4	+1,4	+0,1
1.1.1 Food	3,89	166,2	156,4	161,0	+2,9	-3,1
Grain	0,87	202,2	203,1	203,7	+0,3	+0,7
Vegetables	1,13	178,1	140,6	124,6	-11,4	-30,0
Fruits and nuts	1,43	101,7	90,3	105,4	+16,7	+3,6
Oil seeds	0,13	211,5	340,2	373,6	+9,8	+76,6
Sugar cane	0,30	233,0	268,0	271,1	+1,2	+16,4
Other food	0,04	192,6	170,3	173,8	+2,1	-9,8
1.1.2 Live animals and animal products	3,68	205,9	209,6	209,8	+0,1	+1,9
Live animals	2,91	209,9	215,2	216,2	+0,5	+3,0
Milk	0,25	154,8	151,0	144,6	-4,2	-6,6
Eggs	0,35	257,0	251,2	250,8	-0,2	-2,4
Other raw animal products	0,17	149,9	165,2	165,2	0,0	+10,2
1.1.3 Other agricultural products	0,65	231,8	256,5	255,6	-0,4	+10,3
1.2 Forestry	1,48	123,8	152,5	152,4	-0,1	+23,1
1.3 Fishing	0,25	259,7	272,8	272,8	0,0	+5,0
1.4 Mining and quarrying	19,41	181,3	205,8	206,7	+0,4	+14,0
Coal and lignite	4,97	285,2	366,5	365,5	-0,3	+28,2
Crude petroleum and natural gas	0,62	70,1	72,4	72,6	+0,3	+3,6
Metal ores	11,48	158,2	168,3	170,7	+1,4	+7,9
Other minerals	2,34	123,4	128,7	124,6	-3,2	+1,0
2. Manufacturing	62,30	181,2	186,8	186,6	-0,1	+3,0
2.1 Food at manufacturing	5,87	199,2	198,6	199,0	+0,2	-0,1
Meat and meat products	0,56	223,2	231,2	228,8	-1,0	+2,5
Prepared and preserved fish	0,18	188,8	186,6	186,8	+0,1	-1,1
Fruits and vegetable products	0,56	158,9	162,7	162,2	-0,3	+2,1
Fats and oils	0,43	249,1	244,3	245,7	+0,6	-1,4
Dairy products	0,98	207,6	210,3	209,1	-0,6	+0,7
Grain mill products and bakery products	0,84	178,7	168,2	170,3	+1,2	-4,7
Sugar	0,44	151,7	166,7	166,9	+0,1	+10,0
Coffee and tea	0,16	192,5	190,5	190,9	+0,2	-0,8
Other food products	1,72	202,0	197,0	198,6	+0,8	-1,7
2.2 Beverages	3,04	187,5	193,4	194,3	+0,5	+3,6
Alcoholic beverages	1,73	195,8	202,7	204,1	+0,7	+4,2
Non-alcoholic beverages	1,31	163,4	167,5	167,5	0,0	+2,5
2.3 Tobacco products	0,59	247,1	264,9	264,9	0,0	+7,2
2.4 Textile and made-up goods	1,06	143,6	146,4	145,6	-0,5	+1,4
Yarn and thread; woven and tufted textile fabrics (prepared for spinning)	0,35	152,9	156,7	156,9	+0,1	+2,6
Textile articles other than apparel	0,71	141,0	143,4	142,3	-0,8	+0,9
2.5 Wearing Apparel	1,48	128,9	128,5	128,5	0,0	-0,3
Knitted or crocheted fabrics	0,38	132,5	132,5	132,5	0,0	0,0
Other wearing apparel	1,09	128,3	127,8	127,8	0,0	-0,4
2.6 Leather and leather products	0,32	111,0	112,3	112,3	0,0	+1,2
2.7 Footwear	0,27	150,5	155,9	155,9	0,0	+3,6
2.8 Wood and wood products	1,40	191,7	189,4	189,8	+0,2	-1,0
2.9 Paper and paper products	4,96	175,4	178,3	178,2	-0,1	+1,6
Pulp, paper and paperboard	3,20	157,1	160,7	160,5	-0,1	+2,2
Printing, publishing and allied industries	1,77	191,4	192,6	192,9	+0,2	+0,8
2.10 Products of petroleum and coal	4,98	212,6	221,1	221,3	+0,1	+4,1

Table 8 - Producer Price Index for Domestic output of South African industry groups (concluded)
Base: 2000 = 100

Origin/Group	Weight	Indices			% change between	
		Oct 2009	Sep 2010	Oct 2010	Sep 2010 and Oct 2010	Oct 2009 and Oct 2010
2.11 Chemicals and chemical products	6,74	163,1	165,0	165,6	+0,4	+1,5
2.11.1 Basic Chemicals	3,81	164,0	168,1	169,2	+0,7	+3,2
Basic organic chemicals	0,73	242,0	235,8	228,5	-3,1	-5,6
Basic inorganic chemicals	1,92	131,3	138,5	141,4	+2,1	+7,7
Fertilisers and pesticides	0,41	197,8	200,7	204,5	+1,9	+3,4
Other basic chemicals	0,75	167,4	170,0	169,9	-0,1	+1,5
2.11.2 Compound chemical products	2,93	164,9	164,0	164,2	+0,1	-0,4
Paints, varnishes and related products; artists' colours; ink	1,49	205,1	201,0	201,4	+0,2	-1,8
Pharmaceutical products	0,36	131,6	137,6	137,4	-0,1	+4,4
Soap, cleaning preparations, perfumes and toilet preparations	0,63	164,0	162,9	163,2	+0,2	-0,5
Other compound chemical products	0,45	192,6	197,9	197,9	0,0	+2,8
2.12 Rubber and plastic products	2,59	182,9	186,3	186,6	+0,2	+2,0
Rubber products	1,13	221,0	222,7	222,9	+0,1	+0,9
Plastic products	1,46	165,2	169,8	170,2	+0,2	+3,0
2.13 Non-metallic mineral products	1,97	203,4	216,5	216,6	0,0	+6,5
Glass and glass products	0,04	179,1	187,9	187,9	0,0	+4,9
Other non-metallic minerals products n.e.c.	1,93	215,6	229,5	229,7	+0,1	+6,5
2.14 Basic Metals	6,66	238,3	260,0	256,9	-1,2	+7,8
Basic iron and steel	4,12	297,3	329,2	323,3	-1,8	+8,7
Rolled, drawn and folded products	2,54	153,0	158,7	160,2	+0,9	+4,7
2.15 Metal products	3,34	193,6	189,1	189,0	-0,1	-2,4
Structural metal products and parts thereof	1,27	191,2	193,5	193,6	+0,1	+1,3
Other fabricated metal products	2,07	193,9	185,7	185,6	-0,1	-4,3
2.16 Non-electrical machinery and equipment	2,35	176,7	179,6	179,8	+0,1	+1,8
General purpose machinery	1,99	170,0	173,1	173,2	+0,1	+1,9
Special purpose machinery	0,24	149,3	149,0	149,9	+0,6	+0,4
Domestic appliances and parts thereof	0,12	136,9	137,5	137,5	0,0	+0,4
2.17 Office, accounting and computing machinery	0,20	100,4	100,4	100,4	0,0	0,0
2.18 Electrical machinery and apparatus	1,93	218,0	217,3	217,5	+0,1	-0,2
Electric motors, generators and transformers, and parts thereof	0,07	286,9	282,7	281,8	-0,3	-1,8
Electricity distribution and control apparatus, and parts thereof	0,89	154,3	155,5	155,4	-0,1	+0,7
Insulated wire and cable; optical fibre cables	0,72	303,3	300,2	300,7	+0,2	-0,9
Other electrical machinery and apparatus	0,24	147,5	146,9	147,2	+0,2	-0,2
2.19 Radio, television and communication equipment and parts thereof	0,48	131,6	131,5	130,9	-0,5	-0,5
2.20 Medical appliances, precision and optical instruments, watches and clocks	0,29	148,4	150,0	147,4	-1,7	-0,7
2.21 Transport	5,83	146,6	147,3	147,5	+0,1	+0,6
2.21.1 Motor vehicles, parts and accessories thereof	2,12	145,3	147,2	147,6	+0,3	+1,6
Motor vehicles	2,11	142,0	143,9	144,3	+0,3	+1,6
Parts and accessories for motor vehicles	0,01	185,9	185,9	185,9	0,0	0,0
2.21.2 Bodies (coachwork) for motor vehicles, trailers and semi-trailers; parts	0,09	125,3	120,1	120,2	+0,1	-4,1
Bodies for motor vehicles	0,03	156,7	156,6	156,9	+0,2	+0,1
Trailers, semi-trailer and containers	0,04	120,6	119,0	119,0	0,0	-1,3
Parts for motor vehicles bodies, trailers, semi-trailers and containers	0,01	161,6	121,8	121,8	0,0	-24,6
2.21.3 Other transport equipment	3,62	118,3	118,3	118,3	0,0	0,0
2.22 Furniture	1,01	146,9	152,4	152,4	0,0	+3,7
2.23 Other manufactures	4,95	133,9	145,7	146,0	+0,2	+9,0
3. Electricity, gas, steam and water	8,33	176,2	219,8	206,8	-5,9	+17,4
Electricity	6,86	180,8	234,6	218,1	-7,0	+20,6
Water and gas	1,47	235,4	266,1	266,1	0,0	+13,0

Table 9 Producer Price Index for exported commodities according to group
Base: 2000 = 100

Origin/Group	Weight	Indices			% change between	
		Oct 2009	Sep 2010	Oct 2010	Sep 2010 and Oct 2010	Oct 2009 and Oct 2010
All groups	100,00	155,0	165,4	165,2	-0,1	+6,6
1. Agriculture, forestry, fishing and mining	30,34	155,3	178,4	178,6	+0,1	+15,0
1.1 Agriculture	1,62	146,7	142,1	141,6	-0,4	-3,5
1.1.1 Food	1,50	142,6	134,8	134,3	-0,4	-5,8
Grain	0,19	216,4	188,8	188,8	0,0	-12,8
Vegetables	0,31	98,8	95,3	95,3	0,0	-3,5
Fruits and nuts	0,95	61,6	60,3	59,8	-0,8	-2,9
Oil seeds	0,03	100,1	100,1	100,1	0,0	0,0
Sugar cane	0,02	100,0	100,0	100,0	0,0	0,0
1.1.2 Live animals and animal products	0,04	177,6	298,5	301,1	+0,9	+69,5
Live animals	0,01	100,0	100,0	100,0	0,0	0,0
Other raw animal products	0,03	102,7	198,3	200,3	+1,0	+95,0
1.1.3 Other agricultural products	0,08	161,9	159,7	157,9	-1,1	-2,5
1.2 Forestry	0,09	98,6	98,6	98,6	0,0	0,0
1.3 Fishing	0,06	237,7	232,8	241,0	+3,5	+1,4
1.4 Mining and quarrying	28,57	158,3	182,8	183,0	+0,1	+15,6
Coal and lignite	6,22	223,0	259,8	259,3	-0,2	+16,3
Metal ores	19,82	142,5	166,1	166,6	+0,3	+16,9
Other minerals	2,53	129,7	131,4	130,6	-0,6	+0,7
2. Manufacturing	69,66	155,5	159,9	159,4	-0,3	+2,5
2.1 Food at manufacturing	2,20	171,8	154,4	153,7	-0,5	-10,5
Meat and meat products	0,09	123,5	119,0	120,0	+0,8	-2,8
Prepared and preserved fish	0,24	144,6	143,4	144,5	+0,8	-0,1
Fruits and vegetable products	0,63	122,9	128,5	124,2	-3,3	+1,1
Fats and oils	0,09	199,4	199,4	199,4	0,0	0,0
Dairy products	0,03	143,1	143,1	143,1	0,0	0,0
Grain mill products and bakery products	0,07	178,6	191,6	191,6	0,0	+7,3
Sugar	0,78	177,7	148,1	148,1	0,0	-16,7
Other food products	0,27	173,1	175,0	175,0	0,0	+1,1
2.2 Beverages	1,55	127,7	125,3	125,3	0,0	-1,9
Alcoholic beverages	1,39	128,0	125,3	125,3	0,0	-2,1
Non-alcoholic beverages	0,16	121,0	121,0	121,0	0,0	0,0
2.3 Tobacco products	0,19	148,5	180,8	180,8	0,0	+21,8
2.4 Textile and made-up goods	0,56	176,1	178,5	178,7	+0,1	+1,5
Yarn and thread; woven and tufted textile fabrics (prepared for spinning)	0,03	199,0	227,4	229,5	+0,9	+15,3
Textile articles other than apparel	0,53	118,7	119,3	119,3	0,0	+0,5
2.5 Wearing Apparel	0,19	109,4	111,4	111,4	0,0	+1,8
Knitted or crocheted fabrics	0,14	118,3	118,3	118,3	0,0	0,0
Other wearing apparel	0,06	109,0	115,8	115,8	0,0	+6,2
2.6 Leather and leather products	0,29	98,3	98,3	98,3	0,0	0,0
2.7 Footwear	0,04	166,7	166,7	166,7	0,0	0,0
2.8 Wood and wood products	0,83	181,6	181,7	181,7	0,0	+0,1
2.9 Paper and paper products	1,80	126,5	144,2	144,5	+0,2	+14,2
Pulp, paper and paperboard	1,52	128,2	149,9	150,0	+0,1	+17,0
Printing, publishing and allied industries	0,28	113,4	113,4	114,8	+1,2	+1,2
2.10 Products of petroleum and coal	2,37	249,7	251,2	250,6	-0,2	+0,4

Table 9 - Producer Price Index for exported commodities according to group (concluded)
Base: 2000 = 100

	Weight	Indices			% change between	
		Oct 2009	Sep 2010	Oct 2010	Sep 2010 and Oct 2010	Oct 2009 and Oct 2010
2.11 Chemicals and chemical products	5,14	127,8	120,4	123,3	+2,4	-3,5
2.11.1 Basic Chemicals	3,94	129,6	119,8	123,6	+3,2	-4,6
Basic organic chemicals	0,81	257,4	257,4	257,4	0,0	0,0
Basic inorganic chemicals	2,10	113,8	90,8	99,6	+9,7	-12,5
Other basic chemicals	1,03	136,8	136,8	136,8	0,0	0,0
2.11.2 Compound chemical products	1,21	126,3	126,5	126,5	0,0	+0,2
Paints, varnishes and related products; artists' colours; ink	0,03	173,9	173,9	173,9	0,0	0,0
Soap, cleaning preparations, perfumes and toilet preparations	0,76	140,0	140,3	140,3	0,0	+0,2
Other compound chemical products	0,41	148,9	148,9	148,9	0,0	0,0
2.12 Rubber and plastic products	0,90	145,8	147,5	147,5	0,0	+1,2
Rubber products	0,50	178,5	181,5	181,5	0,0	+1,7
Plastic products	0,40	111,8	112,4	112,4	0,0	+0,5
2.13 Non-metallic mineral products	0,67	140,9	143,1	143,7	+0,4	+2,0
Other non-metallic minerals products n.e.c.	0,67	140,9	143,1	143,7	+0,4	+2,0
2.14 Basic Metals	33,23	183,0	195,2	193,7	-0,8	+5,8
Basic iron and steel	7,33	203,3	248,6	241,1	-3,0	+18,6
Rolled, drawn and folded products	4,32	94,9	99,3	99,3	0,0	+4,6
Other non-ferrous basic metals and articles	21,58	188,0	187,7	188,1	+0,2	+0,1
2.15 Metal products	1,31	168,0	169,8	169,8	0,0	+1,1
Structural metal products and parts thereof	0,54	183,1	186,3	186,3	0,0	+1,7
Other fabricated metal products	0,77	152,4	152,9	152,9	0,0	+0,3
2.16 Non-electrical machinery and equipment	5,73	136,6	136,7	136,8	+0,1	+0,1
General purpose machinery	2,35	125,8	130,8	130,8	0,0	+4,0
Special purpose machinery	1,61	143,7	144,3	144,5	+0,1	+0,6
Domestic appliances and parts thereof	1,76	136,2	128,8	128,8	0,0	-5,4
2.17 Office, accounting and computing machinery	0,23	99,7	99,7	99,7	0,0	0,0
2.18 Electrical machinery and apparatus	0,83	139,8	139,8	139,8	0,0	0,0
Electric motors, generators and transformers, and parts thereof	0,10	169,0	169,0	169,0	0,0	0,0
Electricity distribution and control apparatus, and parts thereof	0,15	141,4	141,4	141,4	0,0	0,0
Insulated wire and cable; optical fibre cables	0,25	176,2	174,3	174,3	0,0	-1,1
Other electrical machinery and apparatus	0,34	121,6	122,5	122,5	0,0	+0,7
2.19 Radio, television and communication equipment and parts thereof	1,14	108,8	107,0	100,8	-5,8	-7,4
2.20 Medical appliances, precision and optical instruments, watches and clocks	0,54	140,1	140,5	140,5	0,0	+0,3
2.21 Transport	7,33	119,8	120,6	120,6	0,0	+0,7
2.21.1 Motor vehicles, parts and accessories thereof	1,63	120,0	120,2	120,2	0,0	+0,2
Motor vehicles	1,28	104,3	104,3	104,3	0,0	0,0
Parts and accessories for motor vehicles	0,35	136,2	137,1	137,1	0,0	+0,7
2.21.2 Bodies (coachwork) for motor vehicles, trailers and semi-trailers; parts	1,68	133,6	138,0	138,0	0,0	+3,3
Trailers, semi-trailer and containers	0,71	101,0	101,0	101,0	0,0	0,0
Parts for motor vehicles bodies, trailers, semi-trailers and containers	0,97	155,5	163,6	163,6	0,0	+5,2
2.21.3 Other transport equipment	4,03	107,4	107,1	107,1	0,0	-0,3
2.22 Furniture	1,04	100,5	100,1	100,1	0,0	-0,4
2.23 Other manufactures	1,53	104,7	101,4	101,4	0,0	-3,2

Table 10 - Producer Price Index for imported commodities according to group
Base: 2000 = 100

	Weight	Indices			% change between	
		Oct 2009	Sep 2010	Oct 2010	Sep 2010 and Oct 2010	Oct 2009 and Oct 2010
All groups	100,00	146,9	148,7	148,8	+0,1	+1,3
1. Agriculture, forestry, fishing and mining	16,75	227,9	244,1	244,1	0,0	+7,1
1.1 Agriculture	0,93	137,1	155,1	153,5	-1,0	+12,0
1.1.1 Food	0,53	136,8	158,8	156,1	-1,7	+14,1
Grain	0,40	110,8	140,0	140,0	0,0	+26,4
Vegetables	0,01	82,4	84,2	84,2	0,0	+2,2
Fruits and nuts	0,03	152,8	167,0	163,9	-1,9	+7,3
Oil seeds	0,03	100,0	100,0	100,0	0,0	0,0
Other food	0,06	406,2	381,7	346,9	-9,1	-14,6
1.1.2 Live animals and animal products	0,06	122,9	122,9	122,9	0,0	0,0
Live animals	0,02	105,8	105,8	105,8	0,0	0,0
Other raw animal products	0,04	175,0	175,0	175,0	0,0	0,0
1.1.3 Other agricultural products	0,33	121,4	132,2	132,6	+0,3	+9,2
1.2 Forestry	0,01	101,3	101,3	101,3	0,0	0,0
1.3 Fishing	0,08	101,3	101,3	101,3	0,0	0,0
1.4 Mining and quarrying	15,73	247,9	265,0	265,1	0,0	+6,9
Coal and lignite	0,02	136,3	144,5	144,5	0,0	+6,0
Crude petroleum and natural gas	12,84	273,2	293,5	293,6	0,0	+7,5
Metal ores	0,76	96,2	96,3	96,4	+0,1	+0,2
Other minerals	2,11	294,0	299,7	299,1	-0,2	+1,7
2. Manufacturing	83,25	138,5	137,2	137,3	+0,1	-0,9
2.1 Food at manufacturing	3,24	175,6	171,2	172,6	+0,8	-1,7
Meat and meat products	0,70	183,6	185,6	188,5	+1,6	+2,7
Prepared and preserved fish	0,07	121,1	121,1	121,1	0,0	0,0
Fruits and vegetable products	0,06	156,0	156,0	156,0	0,0	0,0
Fats and oils	0,96	211,0	213,5	213,5	0,0	+1,2
Dairy products	0,13	157,6	159,3	168,7	+5,9	+7,0
Grain mill products and bakery products	0,72	173,1	146,6	148,7	+1,4	-14,1
Sugar	0,05	174,5	174,5	174,5	0,0	0,0
Coffee and tea	0,02	139,7	139,7	139,7	0,0	0,0
Other food products	0,52	146,0	145,6	145,7	+0,1	-0,2
2.2 Beverages	0,58	157,4	160,5	160,5	0,0	+2,0
Alcoholic beverages	0,36	162,6	167,1	167,1	0,0	+2,8
Non-alcoholic beverages	0,23	109,6	109,6	109,6	0,0	0,0
2.3 Tobacco products	0,05	122,5	122,5	122,5	0,0	0,0
2.4 Textile and made-up goods	1,35	117,9	118,0	118,3	+0,3	+0,3
Yarn and thread; woven and tufted textile fabrics (prepared for spinning)	0,95	110,2	110,2	110,5	+0,3	+0,3
Textile articles other than apparel	0,40	131,6	132,1	132,1	0,0	+0,4
2.5 Wearing Apparel	0,76	122,4	120,9	120,9	0,0	-1,2
Knitted or crocheted fabrics	0,46	121,0	118,7	118,7	0,0	-1,9
Other wearing apparel	0,30	124,4	124,4	124,4	0,0	0,0
2.6 Leather and leather products	0,41	133,4	132,8	133,4	+0,5	0,0
2.7 Footwear	0,67	124,3	122,4	122,4	0,0	-1,5
2.8 Wood and wood products	0,63	141,8	141,4	141,4	0,0	-0,3
2.9 Paper and paper products	1,87	138,2	129,9	129,0	-0,7	-6,7
Pulp, paper and paperboard	1,32	142,2	130,7	129,5	-0,9	-8,9
Printing, publishing and allied industries	0,55	129,2	129,7	129,7	0,0	+0,4
2.10 Products of petroleum and coal	2,20	123,6	119,4	119,4	0,0	-3,4

Table 10 - Producer Price Index for imported commodities according to group (concluded)
Base: 2000 = 100

Origin/Group	Weight	Indices			% change between	
		Oct 2009	Sep 2010	Oct 2010	Sep 2010 and Oct 2010	Oct 2009 and Oct 2010
2.11 Chemicals and chemical products	10,65	161,1	162,0	162,1	+0,1	+0,6
2.11.1 Basic Chemicals	6,29	179,7	181,2	181,4	+0,1	+0,9
Basic organic chemicals	3,26	179,6	178,3	178,4	+0,1	-0,7
Basic inorganic chemicals	0,88	120,3	120,3	120,3	0,0	0,0
Fertilisers and pesticides	0,82	209,9	209,9	209,9	0,0	0,0
Other basic chemicals	1,33	174,4	183,0	183,4	+0,2	+5,2
2.11.2 Compound chemical products	4,36	143,7	143,7	143,6	-0,1	-0,1
Paints, varnishes and related products; artists' colours; ink	0,34	146,8	146,8	146,8	0,0	0,0
Pharmaceutical products	0,89	136,3	136,3	136,3	0,0	0,0
Soap, cleaning preparations, perfumes and toilet preparations	0,53	137,6	137,7	137,7	0,0	+0,1
Other compound chemical products	2,60	145,3	145,3	145,2	-0,1	-0,1
2.12 Rubber and plastic products	2,44	121,3	122,0	122,0	0,0	+0,6
Rubber products	0,96	123,0	125,0	125,0	0,0	+1,6
Plastic products	1,48	120,2	120,2	120,2	0,0	0,0
2.13 Non-metallic mineral products	1,57	140,4	138,2	138,3	+0,1	-1,5
Glass and glass products	0,03	138,4	139,5	139,5	0,0	+0,8
Other non-metallic minerals products n.e.c.	1,54	149,0	146,6	146,7	+0,1	-1,5
2.14 Basic Metals	3,70	179,7	182,8	183,1	+0,2	+1,9
Basic iron and steel	0,77	162,7	158,2	158,4	+0,1	-2,6
Rolled, drawn and folded products	1,24	163,3	164,5	165,2	+0,4	+1,2
Other non-ferrous basic metals and articles	1,69	195,3	202,2	202,4	+0,1	+3,6
2.15 Metal products	2,06	140,7	135,9	134,7	-0,9	-4,3
Structural metal products and parts thereof	0,09	109,4	109,4	109,4	0,0	0,0
Other fabricated metal products	1,97	143,3	138,3	137,0	-0,9	-4,4
2.16 Non-electrical machinery and equipment	14,01	141,3	138,2	138,1	-0,1	-2,3
General purpose machinery	7,98	155,9	152,9	152,7	-0,1	-2,1
Special purpose machinery	4,64	128,8	127,3	127,3	0,0	-1,2
Domestic appliances and parts thereof	1,40	138,3	128,3	128,3	0,0	-7,2
2.17 Office, accounting and computing machinery	5,42	75,0	74,6	78,0	+4,6	+4,0
2.18 Electrical machinery and apparatus	2,95	129,9	129,5	130,0	+0,4	+0,1
Electric motors, generators and transformers, and parts thereof	0,58	104,3	104,5	104,3	-0,2	0,0
Electricity distribution and control apparatus, and parts thereof	0,75	132,4	130,9	132,4	+1,1	0,0
Insulated wire and cable; optical fibre cables	0,28	200,7	202,2	202,4	+0,1	+0,8
Other electrical machinery and apparatus	1,34	130,7	130,2	130,5	+0,2	-0,2
2.19 Radio, television and communication equipment and parts thereof	9,81	98,3	96,5	95,2	-1,3	-3,2
2.20 Medical appliances, precision and optical instruments, watches and clocks	3,34	126,2	124,2	124,1	-0,1	-1,7
Medical and surgical equipment and orthopaedic appliances	3,16	125,4	123,6	123,6	0,0	-1,4
Watches and clocks, and parts thereof	0,18	138,5	132,8	132,5	-0,2	-4,3
2.21 Transport	13,45	147,6	148,1	147,8	-0,2	+0,1
2.21.1 Motor vehicles, parts and accessories thereof	2,83	155,5	155,7	155,0	-0,4	-0,3
Motor vehicles	2,73	108,0	108,1	107,6	-0,5	-0,4
Parts and accessories for motor vehicles	0,11	158,6	158,6	158,6	0,0	0,0
2.21.2 Bodies (coachwork) for motor vehicles, trailers and semi-trailers; parts	1,63	159,5	160,4	160,4	0,0	+0,6
Trailers, semi-trailer and containers	0,70	116,7	116,7	116,7	0,0	0,0
Parts for motor vehicles bodies, trailers, semi-trailers and containers	0,93	161,1	162,6	162,6	0,0	+0,9
2.21.3 Other transport equipment	8,99	111,3	111,7	111,6	-0,1	+0,3
2.22 Furniture	0,64	93,3	92,5	92,5	0,0	-0,9
2.23 Other manufactures	1,44	125,2	124,2	123,7	-0,4	-1,2

Table 11 - Producer Price Index for materials used in certain industries

Base 2000=100

Industry	Indices			% change between	
	Oct 2009	Sep 2010	Oct 2010	Sep 2010 and Oct 2010	Oct 2009 and Oct 2010
Building and construction	211,5	216,8	217,5	+0,3	+2,8
Building industries	214,9	219,0	220,0	+0,4	+2,3
Civil engineering	209,5	212,6	213,7	+0,5	+2,0
Electrical engineering	184,4	185,4	186,6	+0,6	+1,1
Mechanical engineering	192,9	192,9	194,1	+0,6	+0,6

Table 12 - Producer Price Index for selected materials

Base : 2000 = 100

Type of materials	Indices			% change between		
	Oct 2009	Sep 2010	Oct 2010	Sep 2010 and Oct 2010	Oct 2009 and Oct 2010	
Aggregated crushed stone	274,4	283,9	283,9	0,0	+3,4	
Aluminium	Anodising	159,2	159,2	159,2	0,0	0,0
	Basic forms	170,6	171,8	171,8	0,0	+0,7
	Extruded products	246,1	246,1	246,1	0,0	0,0
	Sheeting	247,4	248,3	249,6	+0,5	+0,8
Aluminium lever furniture	174,2	186,4	186,4	0,0	+7,0	
Angles, mild steel	241,3	224,4	254,9	+13,5	+5,6	
Bead wire	193,6	193,6	193,6	0,0	0,0	
Bearings, ball and roller	248,2	259,8	259,8	0,0	+4,6	
Billets, mild steel	294,3	297,6	297,6	0,0	+1,1	
Bitumen	331,8	337,5	332,5	-1,4	+0,2	
Bitumen and Acrylic Emulsion	225,5	225,5	225,5	0,0	0,0	
Boxes, corrugated cardboard	157,1	160,6	164,5	+2,4	+4,7	
Bricks - Face	234,2	252,7	252,7	0,0	+7,8	
Bricks - Stock	254,3	265,7	265,7	0,0	+4,4	
Building boards	167,5	162,0	161,9	-0,0	-3,3	
Ceiling materials	237,9	247,2	247,2	0,0	+3,9	
Cement Retail price	240,1	251,0	250,2	-0,3	+4,2	
Cement building blocks	271,3	282,1	284,0	+0,6	+4,6	
Ceramic and encaustic wall and floor tiles and mosaics	120,1	120,1	120,1	0,0	0,0	
Civil engineering plant	190,9	186,7	186,8	+0,0	-2,1	
Coal, Anthracite - for local sales Grade A	100,7	100,7	100,7	0,0	0,0	
Coal, Anthracite - for local sales Grade SP	100,9	120,0	117,9	-1,7	+16,8	
Coal, Cobbles - grade A	389,8	393,8	393,8	0,0	+1,0	
Coal, Cobbles - grade B	313,4	316,6	316,6	0,0	+1,0	
Coal, Large nuts - grade A	152,3	146,7	146,7	0,0	-3,6	
Coal, Large nuts - grade B	294,3	291,5	283,5	-2,7	-3,6	
Coal, Peas - grade A	462,0	462,7	474,6	+2,5	+2,7	
Coal, Peas - grade B	520,8	514,7	514,7	0,0	-1,1	
Coal, Small nuts - grade A	481,5	565,2	568,0	+0,4	+17,9	
Coal, Small nuts - grade B	383,1	383,1	383,1	0,0	0,0	
Coal, bituminous	277,2	356,5	355,5	-0,2	+28,2	
Coal, bituminous - for local sales	357,9	460,2	458,8	-0,3	+28,1	
Coated profiled GMS sheeting (roofing)	227,4	227,3	227,3	0,0	-0,0	
Concrete pipes	155,4	163,5	168,5	+3,0	+8,4	
Concrete roof tiles	275,7	288,0	288,9	+0,3	+4,7	
Construction machinery (excluding trucks)	142,7	148,0	148,1	+0,0	+3,7	
Containers, glass	178,4	186,0	186,0	0,0	+4,2	
Copper Piping	281,4	288,0	288,0	0,0	+2,3	
Copper, basic forms	361,0	362,5	362,5	0,0	+0,4	
Coumarone indene resin (imported)	148,8	156,2	148,8	-4,7	0,0	
Craft paper	166,5	177,3	177,3	0,0	+6,4	
Cylinder lock set	203,7	218,0	218,0	0,0	+7,0	
Diesel at wholesale level	Coast	261,9	289,9	288,7	-0,4	+10,2
	Witwatersrand	265,0	292,7	291,6	-0,3	+10,0
Diesel oil	Coast and Witwatersrand	257,7	290,6	291,3	+0,2	+13,0
	Retail Metropolitan and other urban areas	328,4	290,8	289,1	-0,5	-11,9
	Retail Metropolitan areas	255,1	236,1	232,7	-1,4	-8,7
Drainage	141,7	141,1	141,6	+0,3	-0,0	
Drop in ceiling tiles-gypsum	164,7	177,0	177,0	0,0	+7,4	
Drop-in ceiling tiles - masonite	223,6	236,7	236,7	0,0	+5,8	
Electrical contracting materials	217,3	218,9	219,1	+0,0	+0,8	
Enamel paints	222,7	210,1	211,2	+0,5	-5,1	
Extruded aluminium distributor level	159,2	164,3	164,3	0,0	+3,2	
Extruded aluminium section	246,5	246,5	246,5	0,0	0,0	
Fibre cement roof sheet	235,6	250,0	250,0	0,0	+6,1	
Fibrous insulation	Batten board	216,5	216,5	216,5	0,0	0,0
	Ceiling insulation	169,0	169,0	169,0	0,0	0,0
	Mattresses	224,5	224,6	224,6	0,0	+0,0
	Preformed pipe sections	162,4	162,4	162,4	0,0	0,0
Flush doors	285,7	279,6	279,6	0,0	-2,1	

Type of materials	Indices			% change between	
	Oct 2009	Sep 2010	Oct 2010	Sep 2010 and Oct 2010	Oct 2009 and Oct 2010
Foam insulation materials	226,7	244,6	244,6	0,0	+7,8
		Polyurethane			
	226,7	244,6	244,6	0,0	+7,8
Glass for the building industry cut to size	204,9	208,8	208,8	0,0	+1,9
Glass, for building industry	142,8	141,0	138,7	-1,6	-2,8
Gypsum board	195,1	209,8	209,8	0,0	+7,5
Hinges	189,9	156,7	159,1	+1,5	-16,2
Imported Meranti	88,5	97,1	97,1	0,0	+9,7
Insulator, porcelain	178,0	178,0	178,0	0,0	0,0
Ironmongery	166,3	177,6	178,3	+0,3	+7,2
Joint Sealants	202,2	202,2	202,2	0,0	0,0
Leather, bovine hide	179,0	179,0	179,0	0,0	0,0
Lever locks	196,7	202,0	205,1	+1,5	+4,2
Mining machinery	155,1	162,9	163,0	+0,0	+5,0
Modified Bitumen sheeting	225,0	228,3	228,3	0,0	+1,4
Natural stone, cut and sawn	153,1	138,6	138,5	-0,0	-9,5
Ordinary and extended cement	302,7	311,6	312,0	+0,1	+3,0
PVC Pipes	145,6	143,4	149,1	+3,9	+2,4
Paints	208,8	210,5	211,6	+0,5	+1,3
Paper, newsprint	236,7	239,1	239,1	0,0	+1,0
Partitioning materials	237,9	247,2	247,2	0,0	+3,9
Petro-chemical building materials	224,0	226,3	224,7	-0,7	+0,3
Petrol, 93 octane		Coast			
	232,3	238,8	240,8	+0,8	+3,6
		Witwatersrand			
	232,3	238,8	240,8	+0,8	+3,6
Plastic bottles	244,2	254,0	254,0	0,0	+4,0
Plastic, bulk forms	192,1	193,9	193,8	-0,0	+0,8
Plate, mild steel	227,4	227,3	227,3	0,0	-0,0
Plumbing	168,5	181,3	181,3	0,0	+7,5
Polybutadiene	280,2	317,2	306,5	-3,3	+9,3
Processing oil	188,9	203,9	203,9	0,0	+7,9
Profiled aluminium roofing	193,8	195,9	195,9	0,0	+1,0
Profiled aluminium roofing - distributor level	146,6	149,7	149,7	0,0	+2,1
Reinforcing steel	267,4	257,2	257,2	0,0	-3,8
Resilient floor coverings	214,0	213,3	210,5	-1,3	-1,6
Rubber crude	163,7	170,3	169,6	-0,4	+3,6
		Rubber crude Synthetic			
	204,6	214,2	213,2	-0,4	+4,2
		Rubber crude Synthetic Local			
	204,6	214,2	213,2	-0,4	+4,2
Rubber industry's indices		Carbon black - N660			
	293,2	293,2	293,2	0,0	0,0
		Carbon black - N774			
	283,9	327,6	327,6	0,0	+15,3
		Natural rubber imported			
	194,5	301,5	305,7	+1,3	+57,1
SA Pine, kiln dried	242,1	242,2	242,9	+0,2	+0,3
Sand	157,1	171,0	171,0	0,0	+8,8
Self-Adhesive sheeting	201,6	201,6	201,6	0,0	0,0
Sementitious paints	209,2	216,4	225,1	+4,0	+7,6
Sheet, galvanized	232,9	232,8	232,8	0,0	-0,0
Sheet, uncoated	258,6	285,2	285,2	0,0	+10,2
Small steel sections	174,3	190,2	190,2	0,0	+9,1
Stainless steel products, flat rolled	182,0	187,9	187,9	0,0	+3,2
Steel tubes, pipes and fittings	114,9	135,3	135,4	+0,0	+17,8
Structural steel products	245,5	253,8	275,5	+8,5	+12,2
Structural steel, unworked	314,3	340,7	345,0	+1,2	+9,7
Sulphuric acid	207,6	207,6	207,6	0,0	0,0
Synthetic rubber		1502			
	260,9	268,0	279,8	+4,4	+7,2
		1712			
	252,7	263,3	275,2	+4,5	+8,9
Tar	213,1	215,1	211,4	-1,7	-0,7
Tile adhesives	254,3	268,5	268,5	0,0	+5,5
Tinplate	297,8	198,3	198,3	0,0	-33,4
Transformer oil	269,7	258,5	298,0	+15,2	+10,4
Trucks	159,4	162,1	162,1	0,0	+1,6
Trucks and buses	156,5	161,2	161,2	0,0	+3,0
Tyres and tubes	235,7	238,2	238,4	+0,0	+1,1
Vinyl sheeting flooring	179,0	197,6	197,6	0,0	+10,3
Vinyl tiles flooring	206,1	222,5	222,5	0,0	+7,9
Wash and basin	139,8	176,4	176,4	0,0	+26,1
Water-closet system (WC's)	153,8	185,4	185,4	0,0	+20,5
Waterproofing	215,2	207,0	207,5	+0,2	-3,5

Type of materials	Indices			% change between	
	Oct 2009	Sep 2010	Oct 2010	Sep 2010 and Oct 2010	Oct 2009 and Oct 2010
White glazed ceramic tiles	216,2	216,2	216,2	0,0	0,0
Wood products, excluding mine wood	193,0	189,5	189,7	+0,1	-1,7
Wool, auction prices, 18 types	200,2	184,8	184,8	0,0	-7,6
Woven needle punch carpeting	239,2	253,6	253,6	0,0	+6,0

NOTES

Forthcoming issues

Issue

November 2010
 December 2010
 January 2011
 February 2011
 March 2011
 April 2011

Expected date of publication

15 December 2010
 27 January 2011
 24 February 2011
 31 March 2011
 28 April 2011
 26 May 2011

Purpose of the survey

The surveys of prices of commodities in domestic output (including exports), imported commodities, and exported commodities are monthly surveys covering samples of manufacturers, importers and exporters in the South African economy. The results of the survey are used to compile the Producer Price Index (PPI) which indicates changes in Producer prices of locally produced commodities (including exports), imports and exports. These statistics are used by the private sector for contract price adjustments, and as a deflator in the compilation of national accounts.

Rebasing

The base year of the Producer Price Index (PPI) is still 2000 = 100. For historical rebasing see the statistical release P0142.4.

Special Data Dissemination Standard (SDDS) of the International Monetary Fund (IMF)

South Africa's data dissemination practices are assessed against the IMF's Special Data Dissemination Standard (SDDS). A detailed description of the SDDS can be found on the IMF's Dissemination Standards Bulletin Board on the internet at <http://dsbb.imf.org>. The SDDS prescribes two to four monitorable elements or good practice that can be observed, or monitored, by users of statistics. These include coverage, periodicity and timeliness, and access to a scheduled release calendar. The SDDS in essence sets standards for the disclosure and transparency of statistics.

South Africa subscribed to the SDDS in 2 August 1996 and posted its metadata as of 27 September 1996. South Africa has met the SDDS specifications for the coverage, periodicity and timeliness of the data, and for the dissemination of advanced release calendars since 18 September 2000.

Stats SA is responsible for compiling and disseminating data on the producer price index, national accounts, government accounts, industry-based statistics, social statistics, the producer price index, consumer price index, labour market and population statistics.

Reports on Observance of Standards and Codes (ROSC) of the International Monetary Fund (IMF)

The IMF has worked on producing ROSC as a step to strengthen the international financial system. The objectives of ROSC include the promotion of increased transparency, and the implementation of internationally accepted standards and codes.

The data dissemination module of the ROSC provides a summary of South Africa's practices on the coverage, periodicity and timeliness of the data categories specified in the IMF's SDDS, and on the practices on the provision of advance release calendars for the data. The ROSC is complemented by an assessment of the quality of the Producer Price Index, using the Data Quality Assessment Framework (DQAF) as developed by the IMF's Statistics Department.

The DQAF assess data quality in terms of -

- Prerequisites of quality;
- Integrity;
- Methodological soundness;
- Accuracy and reliability;
- Serviceability; and
- Accessibility

For South Africa's compliance and performance on the quality of data see <http://www.imf.org/external/np/rosc/rosc.asp>.

Methodological notes Stats SA released a new re-weighted PPI in January 2008 using a revised basket of indicator products.

The new basket of indicator products for locally produced commodities, import and export commodities was compiled through use of several information sources. The information sources used to select relevant indicator products in the different industries are indicated in table A.

Table A – Information sources used to select products in different producer industries

Main products and industries	Sources
Locally produced items	
Agriculture Fishing Forestry	Stats SA, Census of Agriculture, 2005 Fishing Industry Handbook, 2005 Commercial Timber Resources and Roundwood Processing in South Africa, 2005
Mining and quarrying Manufacturing	Department of Mineral Resources Stats SA, Large Sample Survey, 2005
Electricity Gas	Stats SA, Department Energy Stats SA, Economic Activity Survey, 2005
Water	Department of Water Affairs
Imported items	South African Revenue Services
Exported items	South African Revenue Services

The products were classified according to the relevant Central Product Classification (CPC) and at industry level were classified using Standard Industrial Classification (SIC) subgroups. At industry level, value added was used to determine industry weights. At product level, the products in each subgroup were sorted according to their value of sales. The products contributing to the top 80% of the sales in each subgroup were selected as indicator products. These are the products for which prices will be monitored periodically by Stats SA.

The questionnaire(s) for each subgroup, which are used to collect the relevant price information from respondents, were adjusted to include the newly selected indicator products. Although the products on each questionnaire differ from the other questionnaires, their layout is identical.

For each indicator product a sample of manufacturers, importers and exporters was drawn from all the manufacturers, importers and exporters who manufacture, import or export the specific indicator product. The list of manufacturers, importers and exporters (sampling frame), from which the samples were drawn, are indicated in table B.

Table B – Sampling frame

Main products and industries	Sources
Locally produced and sold products	
Agriculture	List of fresh produce markets
Mining and quarrying	List of mines
Forestry	List obtained from Department Agriculture, Forestry and Fishing Old sample of PPI
Fishing	Old sample of PPI List obtained from other sources
Manufacturing	List of manufacturers from Stats SA, Large Sample Survey, 2005 List of manufactures from Stats SA, Business Register List of producers from industry associations
Electricity and gas	List of producers according to Stats SA, Economic Activity Survey
Water	Old sample of PPI List obtained from Department of Water Affairs
Imported products	List of importers obtained from South African Revenue Services
Exported products	List of exporters obtained from South African Revenue Services

ADDITIONAL INFORMATION

EXPLANATORY NOTES

- Introduction** 1 This publication contains results of monthly surveys of prices of locally produced commodities (including exports), imported and exported commodities. The price indices are calculated at base 2000=100.
- Scope of the PPI survey** 2 The indices are compiled on a gross industry basis, i.e. each index relates to those articles, which are produced, imported and exported by the designated industries of the South African economy. Selling prices are collected from manufacturers, importers and exporters.
- Classification** 3 The 1993 edition of the Standard Industrial Classification of all Economic Activities (SIC), Fifth edition, Report No. 09-90-02 was used to classify the industries in the survey. The SIC is based on the 1990 International Standard Industrial Classification of all Economic Activities (ISIC) with suitable adaptations for local conditions. The Central Product Classification (CPC) Version 1.1, Series M No 77 was used to classify the products in the survey.
- 4 This publication presents information, which measures changes in prices of products, which are produced, imported or exported by establishments.
- Statistical unit** 5 The statistical unit is the establishment (branch), which is the smallest economic unit that functions as a separate entity. Each statistical unit is classified to an industry according to the classification of the products that the unit manufactures, imports or exports.
- Survey methodology and design** 6 Different phases of sampling take place. Firstly, a sample of products, based on the information collected through the Large Sample Survey of 2005 and 2005 information on imports and exports received from SARS is designed and drawn. An indicator product is selected purposively within each product group. To be selected, a product should be part of the top 80% of products manufactured, imported or exported in that product group. Furthermore, it must be possible to obtain price quotations for the relevant product during the whole year. The sample of indicator products is revised every five years at which stage the weights of the indicator products/groups are also revised.
- This survey is collected by mail from a sample of approximately 2 325 manufacturers, 2 325 exporters and 2 325 importers. The indices are based on producer prices at the point of Producer in the case of commodities produced in South Africa, and “ex-warehouse”, in the case of imported commodities. Prices “delivered” or “free on rail” are accepted if this is the normal basis of quotation.
- Currently, an average of 13 000 price quotations are collected each month from approximately 2 700 outlets by means of 1 500 distinct questionnaires.
- Pricing basis** 7 Price information refers to the first seven days of the relevant month, except in the case of mining and most of the agricultural products, where it refers to the average price for the month. The average price of imported crude petroleum, used in the compilation of the import component of the PPI, is calculated as the value (in Rands) divided by the quantity of imported crude petroleum for the relevant month. **The prices of all items exclude Value Added Tax (VAT).**

Weighting basis

- 8 The index is a fixed weight index as the weights are determined in the base period and they do not change until the next base period. The commodities directly represented in the index, were selected on the basis of the values of sales of products –
- produced during 2005 for locally produced commodities;
 - exported during 2005; and
 - imported during 2005.

These commodities constitute approximately 80 per cent of the total value of Producer/imports/exports during the relevant year as indicated above. Weights were allocated to each product in accordance with the value of sales for each item during the 2004/05 financial year. The basis on which the weighting structure of each main PPI component, indicated in the tables published in this statistical release, was calculated, is indicated in table C.

Table C– Basis on which the weighting structure of each PPI table is based

Number of table in this statistical release	PPI component	Basis for weighting structure
Table 8	Domestic output of South African industry groups	Sales value of South African Producer (Weighted using the National Accounts value added weights)
Table 9	Exported commodities	Sales value of exported commodities
Table 10	Imported commodities	Sales value of imported commodities
Table 11	Materials used in certain industries	Quantity values of materials used

Processing of price information

- 9 The prices that are quoted for the different products are checked. If the price difference between two successive periods is outside the specified range of increase (+10%) or decreases (-5%), the current price levels are confirmed with relevant respondents.

Calculating product price indices

- 10 Price relatives are calculated for each product per respondent by dividing the current prices by the previously quoted price. The price relative for each product is calculated by means of the geometric mean of the price relatives for each respondent. This price relative for each product is then applied to the product index for the previous month in order to obtain a product index for the relevant month.

Calculating group price indices

- 11 Group price indices are calculated by weighting product indices with the relevant product weight, according to each group's (local, import, export) weighting structure, using the Laspeyres index formula.

Contributions of specific products to the total PPI

- 12 The monthly (annual) contribution of a specific product or group of products to the total PPI is calculated by multiplying the weight of this product or group of products with the monthly (annual) change in the index for this product or group of products, divided by the index for 'All groups', for the previous month (year).

Price indices for diesel	13	<p>The price index for diesel (Coast and Witwatersrand) is based on the refinery prices of diesel.</p> <p>The retail price index for diesel (metropolitan and other urban areas) is based on retail prices obtained from a sample of 84 retail outlets throughout the country. The diesel indices for the different areas are weighted according to the diesel volume distribution as obtained from the South African Petroleum Industry Association (SAPIA).</p> <p>The retail price index for diesel (metropolitan areas) is based on retail prices obtained from a sample of only 48 outlets in the historical metropolitan areas of the CPI. The diesel indices for the different areas are weighted according to the diesel volume distribution in the relevant areas as obtained from the South African Petroleum Industry Association (SAPIA).</p> <p>The price index for diesel at wholesale level (coast and Witwatersrand) is based on the regulated wholesale prices of diesel.</p>										
Reliability of estimates	14	<p>Inaccuracies may occur because of imperfections in reporting by establishment (branch) and errors made in collection and processing of the data. Inaccuracies of this kind are referred to as non-sampling errors. Every effort is made to reduce non-sampling errors to a minimum by careful designing the questionnaires, editing data and efficient operating procedures.</p>										
Related publications	15	<p>Users may also wish to refer to the following publications, which are available from Stats SA -</p> <ul style="list-style-type: none"> • Bulletin of Statistics; and • SA Statistics. 										
Unpublished statistics	16	<p>In some cases, Stats SA can also make available information, which is not published. This information can be made available in one or more of the following ways: computer printout, diskette or CD. Generally a fee is levied for providing unpublished information.</p>										
Symbols and abbreviations	17	<table border="0"> <tr> <td>Stats SA</td> <td>Statistics South Africa</td> </tr> <tr> <td>..</td> <td>not available</td> </tr> <tr> <td>-</td> <td>nil or not applicable</td> </tr> <tr> <td>*</td> <td>revised since previous publication</td> </tr> <tr> <td>avg</td> <td>average</td> </tr> </table>	Stats SA	Statistics South Africa	..	not available	-	nil or not applicable	*	revised since previous publication	avg	average
Stats SA	Statistics South Africa											
..	not available											
-	nil or not applicable											
*	revised since previous publication											
avg	average											

GLOSSARY

Annual percentage change	The annual percentage change is the change in the index of the relevant month of the current year compared with the index of the same month in the previous year expressed as a percentage and is generally accepted as the yardstick of PPI inflation.
Overall average annual percentage change	The overall average annual percentage change is the change in the average index of one year compared with the average index of the previous year expressed as a percentage.
Contribution of specific products to the total PPI	The monthly (annual) contribution of a specific product or group of products to the total PPI is calculated by multiplying the weight of the index with the monthly annual change of the index divided by the index for "All Items".
Establishment	An establishment (branch) is the smallest economic unit that functions as a separate entity.
Indicator products	Indicator products are those products whose sale values represent 80% of the total value of sales (turnover) in an industrial subgroup.
Monthly percentage change	The monthly percentage change is the change in the index of the relevant month compared to the index of the previous month expressed as a percentage.
Weights	The weights show the relative importance of the indicator products in the subgroup. The weight of a product is calculated by dividing the actual value of sales of the relevant indicator product by the total value of sales in that subgroup.

FOR MORE INFORMATION

Stats SA publishes approximately 300 different releases each year. It is not economically viable to produce them in more than one of South Africa's eleven official languages. Since the releases are used extensively, not only locally but also by international economic and social-scientific communities, Stats SA releases are published in English only.

Stats SA has copyright on this publication. Users may apply the information as they wish, provided that they acknowledge Stats SA as the source of the basic data wherever they process, apply, utilise, publish or distribute the data; and also that they specify that the relevant application and analysis (where applicable) result from their own processing of data.

Advance release calendar

An advance release calendar is disseminated on www.statssa.gov.za

Stats SA products

A complete set of Stats SA publications is available at the Stats SA Library and the following libraries -

National Library of South Africa, Pretoria Division
National Library of South Africa, Cape Town Division
Natal Society Library, Pietermaritzburg
Library of Parliament, Cape Town
Bloemfontein Public Library
Johannesburg Public Library
Eastern Cape Library Services, King William's Town
Central Regional Library, Polokwane
Central Reference Library, Nelspruit
Central Reference Collection, Kimberley
Central Reference Library, Mmabatho

Stats SA also provides a subscription service.

Electronic services

A large range of data are available via on-line services, diskette and computer printouts. For more details about our electronic data services, contact (012) 310 8600/8390/8351/4892/8496/8095.

You can visit us on the Internet at: www.statssa.gov.za

Enquiries

Technical enquiries: Marais Kleu
(012) 310 8170

For media enquiries contact:
Mr T Oosterwyk, Manager, at (012) 310-8130 or 082-908-9104

Telephone number: (012) 310 6917/8137/8377 (survey area)
(012) 310 8600/8390/8351/4892/8496/8095 (user information services)
(012) 310 8161 (orders)
(012) 310 8490 (library)

Fax number: (012) 321 3220/6

email: ppi@statssa.gov.za (technical enquiries)
info@statssa.gov.za (user information services)
distribution@statssa.gov.za (orders)

Postal address: Private Bag X 44, Pretoria, 0001

Produced by Stats SA