



**Statistics
South Africa**

Preferred supplier of quality statistics



Statistical release

P0142.1

Producer Price Index (PPI)

October 2009

**Embargoed until:
26 November 2009
11:30**

Enquiries:

Marais Kleu
(012) 310 8170

Forthcoming issue:

November 2009

Expected release date

17 December 2009

Statistics South Africa • Mbalo-mbalo dza Afrika Tshipembe • Tihlayo-tiko ta Afrika-Dzonga • Dipalopalo tsa Aforika Borwa • Ezezibalo zaseNingizimu Afrika
Dipalopalo tša Afrika Borwa • Dipalopalo tsa Afrika Borwa • Ubalo lwaseMzantsi Afrika • Telubalo eNingizimu Afrika • iNanimbalo leSewula Afrika • Statistiek Suid-Afrika

KEY FIGURES AS AT OCTOBER 2009

Producer Price Index and rates of change according to main components

Base: 2000 = 100

Producer Price Index components	indices			Percentage change between	
	Oct 2008	Sep 2009	Oct 2009	Sep 2009 and Oct 2009	Oct 2008 and Oct 2009
Domestic output	185,8	179,8	179,7	-0,1	-3,3
Exported commodities	178,3	153,7	155,0	+0,8	-13,1
Imported commodities	163,6	147,6	146,9	-0,5	-10,2

KEY FINDINGS AS AT OCTOBER 2009

The annual percentage change in the PPI was -3,3% in October 2009 (i.e. the PPI in October 2009 compared with October 2008).

The Producer Price Index (PPI) for domestic output shows an annual rate of change of -3,3% in October 2009 (i.e. the PPI in October 2009 compared with October 2008). This rate is 0,4 of a percentage point higher than the corresponding annual rate of -3,7% in September 2009 (see Table 1 (A), p.5). The higher annual rate in October 2009 compared with that in September 2009 can be explained by increases in the annual rate of change in the Producer Price Indices for:

- Products of petroleum and coal: the annual rate increased from -26,6% in September 2009 to -26,2% in October 2009.
- Mining and quarrying: the annual rate increased from -10,8% in September 2009 to -6,1% in October 2009.
- Agricultural products: the annual rate increased from -2,4% in September 2009 to -0,7% in October 2009.

These increases were partially counteracted by decreases in the annual rate of change for:

- Electricity: the annual rate decreased from +28,1% in September 2009 to +21,7% in October 2009.
- Forestry: the annual rate decreased from -10,2% in September 2009 to -14,1% in October 2009.
- Paper and paper products: the annual rate decreased from +6,7% in September 2009 to +5,3% in October 2009.
- Chemicals and chemical products: the annual rate decreased from -4,8% in September 2009 to -6,3% in October 2009.
- Rubber and plastic products: the annual rate decreased from +1,2% in September 2009 to -3,6% in October 2009.

From September 2009 to October 2009 the PPI for domestic output decreased by 0,1%.

The monthly decrease of 0,1% in the PPI for domestic output was mainly due to monthly contributions from decreases in the price indices for electricity (-0,7 of a percentage point), products of petroleum and coal (-0,3 of a percentage point) and chemicals and chemical products (-0,1 of a percentage point). These decreases were partially counteracted by increases in the price indices for mining and quarrying (+0,8 of a percentage point), agricultural products (+0,1 of a percentage point) and all other groups (+0,1 of a percentage point) (see table 3, p.6).

The annual rate of change in the PPI for exported commodities was -13,1% in October 2009 (i.e. the PPI in October 2009 compared with October 2008).

The PPI for exported commodities shows an annual rate of change of -13,1% in October 2009 (i.e. the PPI in October 2009 compared with October 2008). This rate is 1,9 percentage points lower than the corresponding annual rate of -11,2% in September 2009 (see Table 1(B), p.5).

The annual change of -13,1% in the PPI for exported commodities was due to annual contributions from decreases in the price indices of basic metals (-9,3 percentage points), mining and quarrying (-4,6 percentage points), paper and paper products (-0,2 of a percentage point), products of petroleum and coal (-0,2 of a percentage point), agricultural products (-0,1 of a percentage point) and chemicals and chemical products (-0,1 of a percentage point), counteracted by increases in the price indices of all other groups (+1,1 percentage points) and food at manufacturing (+0,3 of a percentage point) (see Table 4, p.7).

From September 2009 to October 2009 the PPI for exported commodities increased by 0,8%.

The monthly increase of 0,8% in the PPI for exported commodities was due to monthly contributions from increases in the price indices of mining and quarrying (+0,7 of a percentage point) and basic metals (+0,1 of a percentage point) (see Table 5, p.7).

The annual rate of change in the PPI for imported commodities was -10,2% in October 2009 (i.e. the PPI in October 2009 compared with October 2008).

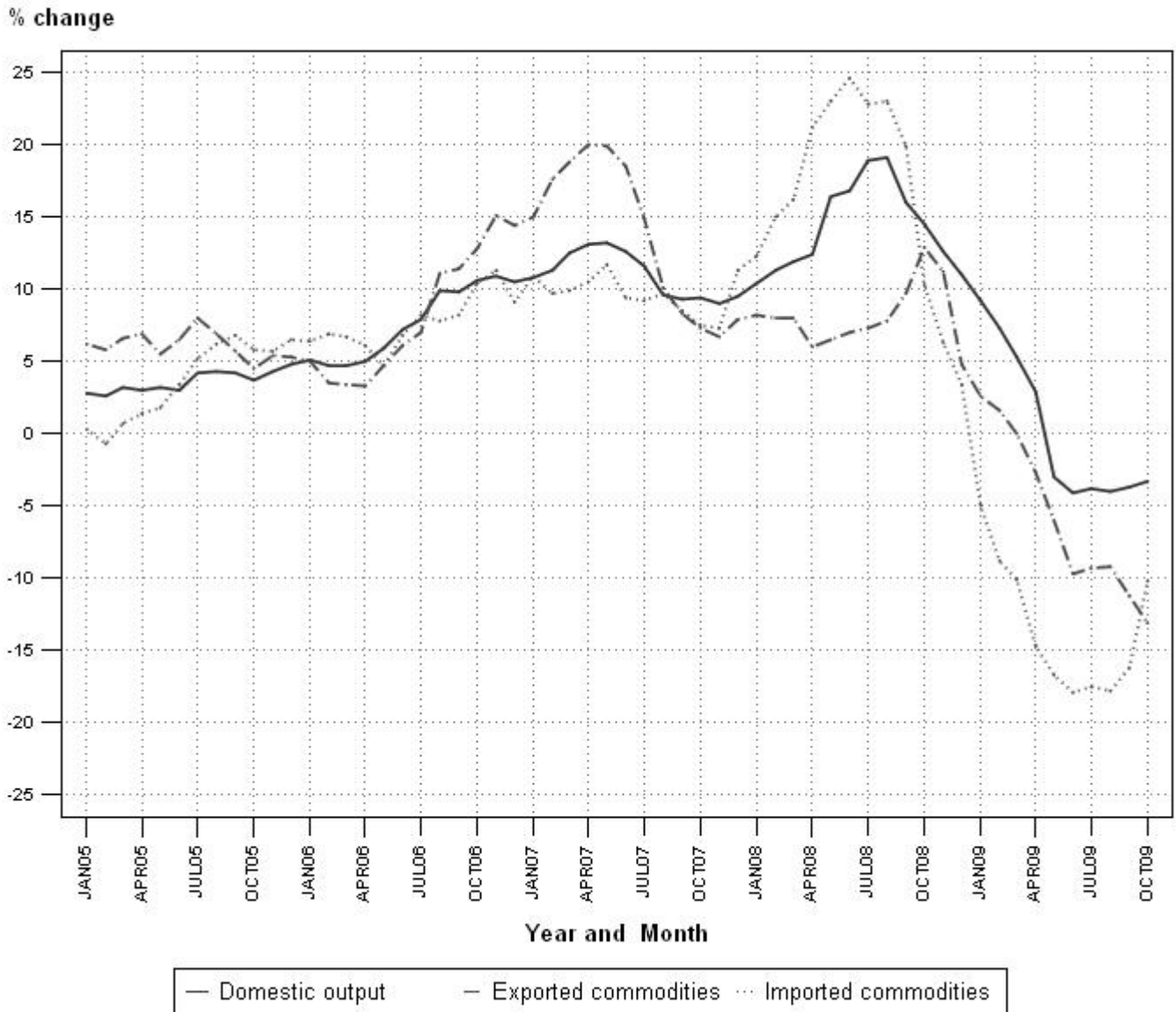
The PPI for imported commodities shows an annual rate of change of -10,2% in October 2009 (i.e. the PPI in October 2009 compared with October 2008). This rate is 6,0 percentage points higher than the corresponding annual rate of -16,2% in September 2009 (see Table 1 (C), p.5).

The annual decrease of 10,2% in the PPI for imported commodities was mainly due to annual contributions from decreases in the price indices of mining and quarrying products (-10,1 percentage points), food at manufacturing (-0,3 of a percentage point), products of petroleum and coal (-0,2 of a percentage point), chemicals and chemical products (-0,2 of a percentage point), agricultural products (-0,1 of a percentage point), basic metals (-0,1 of a percentage point) and furniture (-0,1 of a percentage point). These decreases were partially counteracted by increases in the price indices of non-electrical machinery and equipment (+0,4 of a percentage point) and all other groups (+0,3 of a percentage point) (see Table 6, p.8).

From September 2009 to October 2009 the PPI for imported commodities decreased by 0,5%.

The monthly decrease of 0,5% in the PPI for imported commodities was due to monthly contributions from decreases in the price indices of mining and quarrying (-0,3 of a percentage point), chemicals and chemical products (-0,1 of a percentage point) and non-electrical machinery and equipment (-0,1 of a percentage point) (see Table 7, p.8).

Figure 1 – Annual percentage change in the Producer Price Index:



Source: Stats SA

P J Lehohla
 Statistician General: Statistics South Africa

CONTENTS

Page

KEY FIGURES AS AT OCTOBER 2009.....1

Figure 1 – Annual percentage change in the Producer Price Index:.....3

Table 1 – The Producer Price Index (PPI) and the annual percentage change in the PPI on a monthly basis..... 5

Table 2 – Contributions to the annual percentage change in the PPI for domestic output of South African industry.....6

Table 3 – Contributions to the monthly percentage change in the PPI for domestic output of South African industry.....6

Table 4 – Contributions to the annual percentage change in the PPI for exported commodities according to group..... 7

Table 5 – Contributions to the monthly percentage change in the PPI for exported commodities according to group..... 7

Table 6 – Contributions to the annual percentage change in the PPI for imported commodities according to group..... 8

Table 7 – Contributions to the monthly percentage change in the PPI for imported commodities according to group..... 8

Table 8 – Producer Price Index for domestic output of South African industry groups.....9

Table 9 – Producer Price Index for exported commodities according to group.....11

Table 10 – Producer Price Index for imported commodities according to group.....13

Table 11 – Producer Price Index for materials used in certain industries.....15

Table 12 – Producer Price Index for selected materials.....16

NOTES.....19

ADDITIONAL INFORMATION.....22

GLOSSARY.....25

FOR MORE INFORMATION.....26

Produced by Stats SA.....26

Table 1 The Producer Price Index (PPI) and the annual percentage change in the PPI on a monthly basis

Base: 2000 = 100

A) Domestic output

Year	Jan	Feb	Mar	Apr	May	Jun	Jul	Aug	Sep	Oct	Nov	Dec	Avg
2007	Index	149,3	150,2	152,5	154,9	157,0	160,5	161,9	162,5	160,9	162,3	162,9	158,1
	%	+10,8	+11,3	+12,5	+13,1	+13,2	+12,6	+11,6	+9,6	+9,3	+9,4	+9,0	+10,9
2008	Index	164,9	167,2	170,6	174,1	182,7	187,5	192,5	193,5	186,7	185,8	183,4	180,8
	%	+10,4	+11,3	+11,9	+12,4	+16,4	+16,8	+18,9	+19,1	+16,0	+14,5	+12,6	+14,2
2009	Index	180,0	179,4	179,6	179,2	177,2	179,9	185,2	179,8	179,7
	%	+9,2	+7,3	+5,3	+2,9	-3,0	-4,1	-3,8	-4,0	-3,7

B) Exported commodities

Year	Jan	Feb	Mar	Apr	May	Jun	Jul	Aug	Sep	Oct	Nov	Dec	Avg
2007	Index	148,7	150,6	153,4	156,1	158,6	160,5	159,0	158,2	157,8	160,0	160,1	156,7
	%	+15,0	+17,6	+18,8	+20,0	+19,9	+18,5	+14,9	+10,1	+8,3	+6,7	+7,9	+13,7
2008	Index	160,9	162,7	165,6	165,5	168,9	171,7	170,6	170,5	173,1	177,9	167,8	169,4
	%	+8,2	+8,0	+8,0	+6,0	+6,5	+7,0	+7,3	+7,8	+9,7	+12,9	+11,2	+8,1
2009	Index	165,1	165,3	165,6	161,0	158,8	155,1	154,8	154,8	153,7
	%	+2,6	+1,6	+0,0	-2,7	-6,0	-9,7	-9,3	-9,2	-11,2

C) Imported commodities

Year	Jan	Feb	Mar	Apr	May	Jun	Jul	Aug	Sep	Oct	Nov	Dec	Avg
2007	Index	137,6	135,9	136,8	139,5	140,5	141,7	144,5	145,9	146,9	148,3	149,4	143,1
	%	+10,9	+9,7	+9,9	+10,5	+11,7	+9,4	+9,2	+9,7	+8,5	+7,5	+7,3	+9,6
2008	Index	154,5	156,3	159,0	169,1	172,8	176,6	177,5	179,5	176,2	163,6	158,8	166,7
	%	+12,3	+15,0	+16,2	+21,2	+23,0	+24,6	+22,8	+23,0	+19,9	+10,3	+6,3	+16,5
2009	Index	146,8	142,5	143,0	144,3	143,9	145,0	146,5	147,6	147,6	146,9
	%	-5,0	-8,8	-10,1	-14,7	-16,7	-17,9	-17,5	-17,8	-16,2	-10,2

Table 2 Contributions to the annual percentage change in the PPI for domestic output of South African industry groups

Group	Contribution at Sep 2009	Contribution at Oct 2009
Agriculture	-0,2	-0,1
Forestry	-0,1	-0,2
Mining and quarrying	-2,2	-1,2
Food at manufacturing	-0,1	-0,1
Beverages	+0,2	+0,2
Tobacco products	+0,1	+0,1
Paper and paper products	+0,3	+0,2
Products of petroleum and coal	-2,2	-2,0
Chemicals and chemical products	-0,3	-0,4
Rubber and plastic products	0,0	-0,1
Non-metallic mineral products	+0,1	+0,1
Basic metals	-1,3	-1,3
Transport	+0,1	+0,1
Electricity	+1,6	+1,2
Gas and water	+0,1	+0,1
All other groups	+0,2	+0,1
All groups	-3,7	-3,3

Table 3 Contributions to the monthly percentage change in the PPI for domestic output of South African industry groups

Group	Contribution at Sep 2009	Contribution at Oct 2009
Agriculture	0,0	+0,1
Mining and quarrying	-0,3	+0,8
Food at manufacturing	-0,1	0,0
Products of petroleum and coal	+0,1	-0,3
Chemicals and chemical products	0,0	-0,1
Electricity	-3,1	-0,7
All other groups	+0,2	+0,1
All groups	-3,2	-0,1

Table 4 Contributions to the annual percentage change in the PPI for exported commodities according to group

Group	Contribution at Sep 2009	Contribution at Oct 2009
Agriculture	-0,1	-0,1
Mining and quarrying	-5,8	-4,6
Food at manufacturing	+0,2	+0,3
Paper and paper products	-0,1	-0,2
Products of petroleum and coal	-0,2	-0,2
Chemicals and chemical products	-0,1	-0,1
Basic metals	-5,6	-9,3
All other groups	+0,5	+1,1
All groups	-11,2	-13,1

Table 5 Contributions to the monthly percentage change in the PPI for exported commodities according to group

Group	Contribution at Sep 2009	Contribution at Oct 2009
Mining and quarrying	-0,6	+0,7
Food at manufacturing	-0,1	0,0
Basic metals	+0,1	+0,1
All other groups	-0,1	0,0
All groups	-0,7	+0,8

Table 6 Contributions to the annual percentage change in the PPI for imported commodities according to group

Group	Contribution at Sep 2009	Contribution at Oct 2009
Agriculture	-0,1	-0,1
Mining and quarrying	-16,6	-10,1
Food at manufacturing	-0,2	-0,3
Products of petroleum and coal	-0,3	-0,2
Chemicals and chemical products	-0,1	-0,2
Basic metals	-0,1	-0,1
Non-electrical machinery and equipment	+0,5	+0,4
Radio, television and communication equipment and apparatus	+0,1	0,0
Transport	+0,2	+0,1
Furniture	-0,1	-0,1
Other manufactures	+0,1	+0,1
All other groups	+0,4	+0,3
All groups	-16,2	-10,2

Table 7 Contributions to the monthly percentage change in the PPI for imported commodities according to group

Group	Contribution at Sep 2009	Contribution at Oct 2009
Mining and quarrying	0,0	-0,3
Chemicals and chemical products	0,0	-0,1
Non-electrical machinery and equipment	0,0	-0,1
All groups	0,0	-0,5

Table 8 Producer Price Index for domestic output of South African industry groups
Base: 2000 = 100

Origin/Group	weight	indices			% change between	
		Oct 2008	Sep 2009	Oct 2009	Sep 2009 and Oct 2009	Oct 2008 and Oct 2009
All groups	100,00	185,8	179,8	179,7	-0,1	-3,3
1. Agriculture, forestry, fishing and mining	29,36	187,8	172,6	178,2	+3,2	-5,1
1.1 Agriculture	8,22	187,5	184,0	186,2	+1,2	-0,7
1.1.1 Food	3,89	169,7	163,8	166,2	+1,5	-2,1
Grain	0,87	243,8	191,2	202,2	+5,8	-17,1
Vegetables	1,13	148,0	192,8	178,1	-7,6	+20,3
Fruits and nuts	1,43	106,2	91,3	101,7	+11,4	-4,2
Oil seeds	0,13	315,9	243,0	211,5	-13,0	-33,0
Sugar cane	0,30	195,8	240,4	233,0	-3,1	+19,0
Other food	0,04	166,3	186,3	192,6	+3,4	+15,8
1.1.2 Live animals and animal products	3,68	198,0	203,3	205,9	+1,3	+4,0
Live animals	2,91	205,1	207,3	209,9	+1,3	+2,3
Milk	0,25	147,8	154,7	154,8	+0,1	+4,7
Eggs	0,35	213,9	255,7	257,0	+0,5	+20,1
Other raw animal products	0,17	172,7	141,3	149,9	+6,1	-13,2
1.1.3 Other agricultural products	0,65	272,4	234,4	231,8	-1,1	-14,9
1.2 Forestry	1,48	144,1	121,1	123,8	+2,2	-14,1
1.3 Fishing	0,25	288,1	259,7	259,7	0,0	-9,9
1.4 Mining and quarrying	19,41	193,1	174,0	181,3	+4,2	-6,1
Coal and lignite	4,97	268,2	264,5	285,2	+7,8	+6,3
Crude petroleum and natural gas	0,62	77,7	69,5	70,1	+0,9	-9,8
Metal ores	11,48	174,8	153,6	158,2	+3,0	-9,5
Other minerals	2,34	159,0	124,2	123,4	-0,6	-22,4
2. Manufacturing	62,30	190,4	182,0	181,2	-0,4	-4,8
2.1 Food at manufacturing	5,87	202,0	198,7	199,2	+0,3	-1,4
Meat and meat products	0,56	212,6	219,5	223,2	+1,7	+5,0
Prepared and preserved fish	0,18	188,6	188,2	188,8	+0,3	+0,1
Fruits and vegetable products	0,56	148,0	157,8	158,9	+0,7	+7,4
Fats and oils	0,43	294,4	247,2	249,1	+0,8	-15,4
Dairy products	0,98	200,1	206,9	207,6	+0,3	+3,7
Grain mill products and bakery products	0,84	199,7	178,7	178,7	0,0	-10,5
Sugar	0,44	137,8	151,6	151,7	+0,1	+10,1
Coffee and tea	0,16	170,1	192,5	192,5	0,0	+13,2
Other food products	1,72	208,7	202,8	202,0	-0,4	-3,2
2.2 Beverages	3,04	177,3	187,3	187,5	+0,1	+5,8
Alcoholic beverages	1,73	186,2	195,6	195,8	+0,1	+5,2
Non-alcoholic beverages	1,31	152,6	163,4	163,4	0,0	+7,1
2.3 Tobacco products	0,59	217,2	247,1	247,1	0,0	+13,8
2.4 Textile and made-up goods	1,06	138,2	142,9	143,6	+0,5	+3,9
Yarn and thread; woven and tufted textile fabrics (prepared for spinning)	0,35	144,4	150,5	152,9	+1,6	+5,9
Textile articles other than apparel	0,71	136,9	141,0	141,0	0,0	+3,0
2.5 Wearing Apparel	1,48	127,5	128,9	128,9	0,0	+1,1
Knitted or crocheted fabrics	0,38	132,5	132,5	132,5	0,0	0,0
Other wearing apparel	1,09	126,6	128,3	128,3	0,0	+1,3
2.6 Leather and leather products	0,32	109,8	111,0	111,0	0,0	+1,1
2.7 Footwear	0,27	144,1	147,3	150,5	+2,2	+4,4
2.8 Wood and wood products	1,40	189,0	193,3	191,7	-0,8	+1,4
2.9 Paper and paper products	4,96	166,5	174,2	175,4	+0,7	+5,3
Pulp, paper and paperboard	3,20	152,9	156,6	157,1	+0,3	+2,7
Printing, publishing and allied industries	1,77	174,1	189,0	191,4	+1,3	+9,9
2.10 Products of petroleum and coal	4,98	288,1	223,8	212,6	-5,0	-26,2

Table 8 - Producer Price Index for Domestic output of South African industry groups (concluded)
Base: 2000 = 100

Origin/Group	weight	indices			% change between	
		Oct 2008	Sep 2009	Oct 2009	Sep 2009 and Oct 2009	Oct 2008 and Oct 2009
2.11 Chemicals and chemical products	6,74	174,1	165,0	163,1	-1,2	-6,3
2.11.1 Basic Chemicals	3,81	188,9	167,5	164,0	-2,1	-13,2
Basic organic chemicals	0,73	243,9	242,0	242,0	0,0	-0,8
Basic inorganic chemicals	1,92	146,7	133,1	131,3	-1,4	-10,5
Fertilisers and pesticides	0,41	340,9	209,2	197,8	-5,4	-42,0
Other basic chemicals	0,75	170,6	173,4	167,4	-3,5	-1,9
2.11.2 Compound chemical products	2,93	159,3	164,9	164,9	0,0	+3,5
Paints, varnishes and related products; artists' colours; ink	1,49	201,8	205,6	205,1	-0,2	+1,6
Pharmaceutical products	0,36	129,7	131,5	131,6	+0,1	+1,5
Soap, cleaning preparations, perfumes and toilet preparations	0,63	153,6	162,8	164,0	+0,7	+6,8
Other compound chemical products	0,45	175,2	192,2	192,6	+0,2	+9,9
2.12 Rubber and plastic products	2,59	189,8	182,6	182,9	+0,2	-3,6
Rubber products	1,13	224,3	220,6	221,0	+0,2	-1,5
Plastic products	1,46	174,8	164,9	165,2	+0,2	-5,5
2.13 Non-metallic mineral products	1,97	190,3	203,6	203,4	-0,1	+6,9
Glass and glass products	0,04	147,8	179,1	179,1	0,0	+21,2
Other non-metallic minerals products n.e.c.	1,93	202,1	215,9	215,6	-0,1	+6,7
2.14 Basic Metals	6,66	275,1	237,9	238,3	+0,2	-13,4
Basic iron and steel	4,12	339,9	296,6	297,3	+0,2	-12,5
Rolled, drawn and folded products	2,54	182,2	153,1	153,0	-0,1	-16,0
2.15 Metal products	3,34	192,7	193,6	193,6	0,0	+0,5
Structural metal products and parts thereof	1,27	204,2	191,3	191,2	-0,1	-6,4
Other fabricated metal products	2,07	185,5	193,8	193,9	+0,1	+4,5
2.16 Non-electrical machinery and equipment	2,35	175,7	176,7	176,7	0,0	+0,6
General purpose machinery	1,99	169,1	170,0	170,0	0,0	+0,5
Special purpose machinery	0,24	149,2	149,3	149,3	0,0	+0,1
Domestic appliances and parts thereof	0,12	134,4	136,9	136,9	0,0	+1,9
2.17 Office, accounting and computing machinery	0,20	100,4	100,4	100,4	0,0	0,0
2.18 Electrical machinery and apparatus	1,93	216,2	218,0	218,0	0,0	+0,8
Electric motors, generators and transformers, and parts thereof	0,07	270,1	286,9	286,9	0,0	+6,2
Electricity distribution and control apparatus, and parts thereof	0,87	152,2	154,3	154,3	0,0	+1,4
Insulated wire and cable; optical fibre cables	0,72	304,3	303,2	303,3	0,0	-0,3
Other electrical machinery and apparatus	0,26	145,3	147,5	147,5	0,0	+1,5
2.19 Radio, television and communication equipments and parts thereof	0,48	130,5	131,6	131,6	0,0	+0,8
2.20 Medical appliances, precision and optical instruments, watches and clocks	0,29	143,8	148,2	148,4	+0,1	+3,2
2.21 Transport	5,83	144,5	146,6	146,6	0,0	+1,5
2.21.1 Motor vehicles, parts and accessories thereof	2,12	140,5	145,3	145,3	0,0	+3,4
Motor vehicles	2,11	137,4	142,0	142,0	0,0	+3,3
Parts and accessories for motor vehicles	0,01	168,4	185,9	185,9	0,0	+10,4
2.21.2 Bodies (coachwork) for motor vehicles, trailers and semi-trailers; parts	0,09	120,3	124,7	125,3	+0,5	+4,2
Bodies for motor vehicles	0,03	156,9	156,7	156,7	0,0	-0,1
Trailers, semi-trailer and containers	0,04	113,9	119,6	120,6	+0,8	+5,9
Parts for motor vehicles bodies, trailers, semi-trailers and containers	0,01	144,5	160,4	161,6	+0,7	+11,8
2.21.3 Other transport equipment	3,62	118,3	118,3	118,3	0,0	0,0
2.22 Furniture	1,01	141,0	146,4	146,9	+0,3	+4,2
2.23 Other manufactures	4,95	134,6	133,7	133,9	+0,1	-0,5
3. Electricity, gas, steam and water	8,33	149,0	191,1	176,2	-7,8	+18,3
Electricity	6,86	148,6	200,2	180,8	-9,7	+21,7
Water and gas	1,47	219,2	235,4	235,4	0,0	+7,4

Table 9 Producer Price Index for exported commodities according to group
Base: 2000 = 100

Origin/Group	weight	indices			% change between	
		Oct 2008	Sep 2009	Oct 2009	Sep 2009 and Oct 2009	Oct 2008 and Oct 2009
All groups	100,00	178,3	153,7	155,0	+0,8	-13,1
1. Agriculture, forestry, fishing and mining	30,34	182,5	151,9	155,3	+2,2	-14,9
1.1 Agriculture	1,62	155,0	143,8	146,7	+2,0	-5,4
1.1.1 Food	1,50	153,8	140,0	142,6	+1,9	-7,3
Grain	0,19	246,1	207,6	216,4	+4,2	-12,1
Vegetables	0,31	100,0	92,9	98,8	+6,4	-1,2
Fruits and nuts	0,95	66,7	62,6	61,6	-1,6	-7,6
Oil seeds	0,03	100,0	100,1	100,1	0,0	+0,1
Sugar cane	0,02	100,0	100,0	100,0	0,0	0,0
1.1.2 Live animals and animal products	0,04	136,3	146,7	177,6	+21,1	+30,3
Live animals	0,01	100,0	100,0	100,0	0,0	0,0
Other raw animal products	0,03	108,5	78,3	102,7	+31,2	-5,3
1.1.3 Other agricultural products	0,08	160,8	162,2	161,9	-0,2	+0,7
1.2 Forestry	0,09	99,6	99,1	98,6	-0,5	-1,0
1.3 Fishing	0,06	257,4	237,6	237,7	0,0	-7,7
1.4 Mining and quarrying	28,57	186,7	154,8	158,3	+2,3	-15,2
Coal and lignite	6,22	291,0	218,5	223,0	+2,1	-23,4
Metal ores	19,82	161,9	138,9	142,5	+2,6	-12,0
Other minerals	2,53	141,2	130,4	129,7	-0,5	-8,1
2. Manufacturing	69,66	177,0	155,2	155,5	+0,2	-12,1
2.1 Food at manufacturing	2,20	147,0	169,4	171,8	+1,4	+16,9
Meat and meat products	0,09	122,6	123,7	123,5	-0,2	+0,7
Prepared and preserved fish	0,24	141,2	144,6	144,6	0,0	+2,4
Fruits and vegetable products	0,63	129,4	123,8	122,9	-0,7	-5,0
Fats and oils	0,09	199,4	199,4	199,4	0,0	0,0
Dairy products	0,03	143,1	143,1	143,1	0,0	0,0
Grain mill products and bakery products	0,07	183,8	165,5	178,6	+7,9	-2,8
Sugar	0,78	137,6	173,9	177,7	+2,2	+29,1
Other food products	0,27	165,7	173,1	173,1	0,0	+4,5
2.2 Beverages	1,55	128,0	127,7	127,7	0,0	-0,2
Alcoholic beverages	1,39	128,9	128,0	128,0	0,0	-0,7
Non-alcoholic beverages	0,16	117,6	121,0	121,0	0,0	+2,9
2.3 Tobacco products	0,19	118,4	148,5	148,5	0,0	+25,4
2.4 Textile and made-up goods	0,56	176,3	176,1	176,1	0,0	-0,1
Yarn and thread; woven and tufted textile fabrics (prepared for spinning)	0,03	201,9	199,0	199,0	0,0	-1,4
Textile articles other than apparel	0,53	118,7	118,7	118,7	0,0	0,0
2.5 Wearing Apparel	0,19	108,5	109,4	109,4	0,0	+0,8
Knitted or crocheted fabrics	0,14	118,3	118,3	118,3	0,0	0,0
Other wearing apparel	0,06	106,0	109,0	109,0	0,0	+2,8
2.6 Leather and leather products	0,29	98,3	98,3	98,3	0,0	0,0
2.7 Footwear	0,04	166,7	166,7	166,7	0,0	0,0
2.8 Wood and wood products	0,83	181,4	181,6	181,6	0,0	+0,1
2.9 Paper and paper products	1,80	142,3	126,6	126,5	-0,1	-11,1
Pulp, paper and paperboard	1,52	147,6	128,4	128,2	-0,2	-13,1
Printing, publishing and allied industries	0,28	113,4	113,4	113,4	0,0	0,0
2.10 Products of petroleum and coal	2,37	263,3	250,5	249,7	-0,3	-5,2

Table 9 - Producer Price Index for exported commodities according to group (concluded)
Base: 2000 = 100

	weight	indices			% change between	
		Oct 2008	Sep 2009	Oct 2009	Sep 2009 and Oct 2009	Oct 2008 and Oct 2009
2.11 Chemicals and chemical products	5,14	132,3	127,6	127,8	+0,2	-3,4
2.11.1 Basic Chemicals	3,94	135,4	129,6	129,6	0,0	-4,3
Basic organic chemicals	0,81	257,4	257,4	257,4	0,0	0,0
Basic inorganic chemicals	2,10	127,3	113,8	113,8	0,0	-10,6
Other basic chemicals	1,03	136,8	136,8	136,8	0,0	0,0
2.11.2 Compound chemical products	1,21	126,6	125,6	126,3	+0,6	-0,2
Paints, varnishes and related products; artists' colours; ink	0,03	173,9	173,9	173,9	0,0	0,0
Soap, cleaning preparations, perfumes and toilet preparations	0,76	147,8	140,1	140,0	-0,1	-5,3
Other compound chemical products	0,41	129,8	145,7	148,9	+2,2	+14,7
2.12 Rubber and plastic products	0,90	146,6	145,8	145,8	0,0	-0,5
Rubber products	0,50	177,5	178,5	178,5	0,0	+0,6
Plastic products	0,40	114,4	111,8	111,8	0,0	-2,3
2.13 Non-metallic mineral products	0,67	138,9	140,9	140,9	0,0	+1,4
Other non-metallic minerals products n.e.c.	0,67	138,9	140,9	140,9	0,0	+1,4
2.14 Basic Metals	33,23	232,9	182,5	183,0	+0,3	-21,4
Basic iron and steel	7,33	262,5	200,9	203,3	+1,2	-22,6
Rolled, drawn and folded products	4,32	176,0	94,9	94,9	0,0	-46,1
Other non-ferrous basic metals and articles	21,58	174,0	188,1	188,0	-0,1	+8,0
2.15 Metal products	1,31	169,1	167,9	168,0	+0,1	-0,7
Structural metal products and parts thereof	0,54	182,3	182,8	183,1	+0,2	+0,4
Other fabricated metal products	0,77	155,4	152,5	152,4	-0,1	-1,9
2.16 Non-electrical machinery and equipment	5,73	136,1	136,6	136,6	0,0	+0,4
General purpose machinery	2,35	125,4	125,8	125,8	0,0	+0,3
Special purpose machinery	1,61	142,7	143,7	143,7	0,0	+0,7
Domestic appliances and parts thereof	1,76	135,7	136,2	136,2	0,0	+0,4
2.17 Office, accounting and computing machinery	0,23	99,7	99,7	99,7	0,0	0,0
2.18 Electrical machinery and apparatus	0,83	139,9	139,8	139,8	0,0	-0,1
Electric motors, generators and transformers, and parts thereof	0,10	169,0	169,0	169,0	0,0	0,0
Electricity distribution and control apparatus, and parts thereof	0,15	141,4	141,4	141,4	0,0	0,0
Insulated wire and cable; optical fibre cables	0,25	176,5	176,2	176,2	0,0	-0,2
Other electrical machinery and apparatus	0,34	121,6	121,6	121,6	0,0	0,0
2.19 Radio, television and communication equipments and parts thereof	1,14	103,3	108,8	108,8	0,0	+5,3
2.20 Medical appliances, precision and optical instruments, watches and clocks	0,54	139,5	140,1	140,1	0,0	+0,4
2.21 Transport	7,33	119,6	119,8	119,8	0,0	+0,2
2.21.1 Motor vehicles, parts and accessories thereof	1,63	123,0	120,0	120,0	0,0	-2,4
Motor vehicles	1,28	104,3	104,3	104,3	0,0	0,0
Parts and accessories for motor vehicles	0,35	153,6	136,2	136,2	0,0	-11,3
2.21.2 Bodies (coachwork) for motor vehicles, trailers and semi-trailers; parts	1,68	132,3	133,6	133,6	0,0	+1,0
Trailers, semi-trailer and containers	0,71	101,0	101,0	101,0	0,0	0,0
Parts for motor vehicles bodies, trailers, semi-trailers and containers	0,97	153,0	155,5	155,5	0,0	+1,6
2.21.3 Other transport equipment	4,03	106,6	107,4	107,4	0,0	+0,8
2.22 Furniture	1,04	100,5	100,5	100,5	0,0	0,0
2.23 Other manufactures	1,53	104,9	104,7	104,7	0,0	-0,2

Table 10 - Producer Price Index for imported commodities according to group
Base: 2000 = 100

	weight	indices			% change between	
		Oct 2008	Sep 2009	Oct 2009	Sep 2009 and Oct 2009	Oct 2008 and Oct 2009
All groups	100,00	163,6	147,6	146,9	-0,5	-10,2
1. Agriculture, forestry, fishing and mining	16,75	322,2	230,4	227,9	-1,1	-29,3
1.1 Agriculture	0,93	158,1	132,3	137,1	+3,6	-13,3
1.1.1 Food	0,53	164,0	129,9	136,8	+5,3	-16,6
Grain	0,40	154,4	102,2	110,8	+8,4	-28,2
Vegetables	0,01	103,1	75,6	82,4	+9,0	-20,1
Fruits and nuts	0,03	161,3	152,8	152,8	0,0	-5,3
Oil seeds	0,03	100,0	100,0	100,0	0,0	0,0
Other food	0,06	290,4	408,7	406,2	-0,6	+39,9
1.1.2 Live animals and animal products	0,06	122,9	122,9	122,9	0,0	0,0
Live animals	0,02	105,8	105,8	105,8	0,0	0,0
Other raw animal products	0,04	175,0	175,0	175,0	0,0	0,0
1.1.3 Other agricultural products	0,33	131,0	120,6	121,4	+0,7	-7,3
1.2 Forestry	0,01	100,0	101,3	101,3	0,0	+1,3
1.3 Fishing	0,08	101,3	101,3	101,3	0,0	0,0
1.4 Mining and quarrying	15,73	352,7	250,9	247,9	-1,2	-29,7
Coal and lignite	0,02	123,9	136,3	136,3	0,0	+10,0
Crude petroleum and natural gas	12,84	397,0	276,7	273,2	-1,3	-31,2
Metal ores	0,76	96,2	96,2	96,2	0,0	0,0
Other minerals	2,11	333,6	296,1	294,0	-0,7	-11,9
2. Manufacturing	83,25	138,9	138,8	138,5	-0,2	-0,3
2.1 Food at manufacturing	3,24	188,5	176,0	175,6	-0,2	-6,8
Meat and meat products	0,70	195,4	180,7	183,6	+1,6	-6,0
Prepared and preserved fish	0,07	121,1	121,1	121,1	0,0	0,0
Fruits and vegetable products	0,06	156,0	156,0	156,0	0,0	0,0
Fats and oils	0,96	215,3	212,9	211,0	-0,9	-2,0
Dairy products	0,13	161,9	157,4	157,6	+0,1	-2,7
Grain mill products and bakery products	0,72	218,7	174,3	173,1	-0,7	-20,9
Sugar	0,05	188,0	174,5	174,5	0,0	-7,2
Coffee and tea	0,02	139,7	139,7	139,7	0,0	0,0
Other food products	0,52	141,8	146,3	146,0	-0,2	+3,0
2.2 Beverages	0,58	152,9	157,4	157,4	0,0	+2,9
Alcoholic beverages	0,36	156,0	162,6	162,6	0,0	+4,2
Non-alcoholic beverages	0,23	109,6	109,6	109,6	0,0	0,0
2.3 Tobacco products	0,05	122,5	122,5	122,5	0,0	0,0
2.4 Textile and made-up goods	1,35	119,7	118,3	117,9	-0,3	-1,5
Yarn and thread; woven and tufted textile fabrics (prepared for spinning)	0,95	112,5	110,7	110,2	-0,5	-2,0
Textile articles other than apparel	0,40	132,3	132,0	131,6	-0,3	-0,5
2.5 Wearing Apparel	0,76	122,4	122,3	122,4	+0,1	0,0
Knitted or crocheted fabrics	0,46	122,5	121,0	121,0	0,0	-1,2
Other wearing apparel	0,30	121,4	124,0	124,4	+0,3	+2,5
2.6 Leather and leather products	0,41	132,9	133,4	133,4	0,0	+0,4
2.7 Footwear	0,67	119,0	126,0	124,3	-1,3	+4,5
2.8 Wood and wood products	0,63	146,4	141,4	141,8	+0,3	-3,1
2.9 Paper and paper products	1,87	138,3	139,7	138,2	-1,1	-0,1
Pulp, paper and paperboard	1,32	142,7	144,2	142,2	-1,4	-0,4
Printing, publishing and allied industries	0,55	128,0	129,2	129,2	0,0	+0,9
2.10 Products of petroleum and coal	2,20	135,8	123,6	123,6	0,0	-9,0

Table 10 - Producer Price Index for imported commodities according to group (concluded)
Base: 2000 = 100

Origin/Group	weight	indices			% change between	
		Oct 2008	Sep 2009	Oct 2009	Sep 2009 and Oct 2009	Oct 2008 and Oct 2009
2.11 Chemicals and chemical products	10,65	163,5	161,9	161,1	-0,5	-1,5
2.11.1 Basic Chemicals	6,29	184,1	181,0	179,7	-0,7	-2,4
Basic organic chemicals	3,26	182,0	179,9	179,6	-0,2	-1,3
Basic inorganic chemicals	0,88	122,0	120,3	120,3	0,0	-1,4
Fertilisers and pesticides	0,82	209,9	209,9	209,9	0,0	0,0
Other basic chemicals	1,33	185,5	178,7	174,4	-2,4	-6,0
2.11.2 Compound chemical products	4,36	143,2	143,7	143,7	0,0	+0,3
Paints, varnishes and related products; artists' colours; ink	0,34	142,5	146,8	146,8	0,0	+3,0
Pharmaceutical products	0,89	136,3	136,3	136,3	0,0	0,0
Soap, cleaning preparations, perfumes and toilet preparations	0,53	133,6	137,6	137,6	0,0	+3,0
Other compound chemical products	2,60	146,1	145,3	145,3	0,0	-0,5
2.12 Rubber and plastic products	2,44	121,4	121,4	121,3	-0,1	-0,1
Rubber products	0,96	123,3	123,4	123,0	-0,3	-0,2
Plastic products	1,48	120,2	120,2	120,2	0,0	0,0
2.13 Non-metallic mineral products	1,57	139,3	140,9	140,4	-0,4	+0,8
Glass and glass products	0,03	121,0	138,4	138,4	0,0	+14,4
Other non-metallic minerals products n.e.c.	1,54	148,3	149,6	149,0	-0,4	+0,5
2.14 Basic Metals	3,70	185,1	179,1	179,7	+0,3	-2,9
Basic iron and steel	0,77	162,7	162,7	162,7	0,0	0,0
Rolled, drawn and folded products	1,24	172,1	164,3	163,3	-0,6	-5,1
Other non-ferrous basic metals and articles	1,69	200,1	193,3	195,3	+1,0	-2,4
2.15 Metal products	2,06	139,6	141,1	140,7	-0,3	+0,8
Structural metal products and parts thereof	0,09	109,4	109,4	109,4	0,0	0,0
Other fabricated metal products	1,97	142,2	143,7	143,3	-0,3	+0,8
2.16 Non-electrical machinery and equipment	14,01	136,4	141,9	141,3	-0,4	+3,6
General purpose machinery	7,98	148,3	156,1	155,9	-0,1	+5,1
Special purpose machinery	4,64	126,0	130,5	128,8	-1,3	+2,2
Domestic appliances and parts thereof	1,40	140,1	138,3	138,3	0,0	-1,3
2.17 Office, accounting and computing machinery	5,42	76,2	75,5	75,0	-0,7	-1,6
2.18 Electrical machinery and apparatus	2,95	128,9	130,1	129,9	-0,2	+0,8
Electric motors, generators and transformers, and parts thereof	0,58	103,6	104,3	104,3	0,0	+0,7
Electricity distribution and control apparatus, and parts thereof	0,75	130,1	131,9	132,4	+0,4	+1,8
Insulated wire and cable; optical fibre cables	0,28	201,9	199,6	200,7	+0,6	-0,6
Other electrical machinery and apparatus	1,34	129,8	131,4	130,7	-0,5	+0,7
2.19 Radio, television and communication equipments and parts thereof	9,81	98,5	98,7	98,3	-0,4	-0,2
2.20 Medical appliances, precision and optical instruments, watches and clocks	3,34	124,0	125,5	126,2	+0,6	+1,8
Medical and surgical equipment and orthopaedic appliances	3,16	123,3	124,6	125,4	+0,6	+1,7
Watches and clocks, and parts thereof	0,18	134,7	138,5	138,5	0,0	+2,8
2.21 Transport	13,45	146,4	147,5	147,6	+0,1	+0,8
2.21.1 Motor vehicles, parts and accessories thereof	2,83	155,1	155,6	155,5	-0,1	+0,3
Motor vehicles	2,73	107,6	108,0	108,0	0,0	+0,4
Parts and accessories for motor vehicles	0,11	158,6	158,6	158,6	0,0	0,0
2.21.2 Bodies (coachwork) for motor vehicles, trailers and semi-trailers; parts	1,63	155,9	158,7	159,5	+0,5	+2,3
Trailers, semi-trailer and containers	0,70	116,7	116,7	116,7	0,0	0,0
Parts for motor vehicles bodies, trailers, semi-trailers and containers	0,93	154,9	159,8	161,1	+0,8	+4,0
2.21.3 Other transport equipment	8,99	110,8	111,4	111,3	-0,1	+0,5
2.22 Furniture	0,64	107,4	93,3	93,3	0,0	-13,1
2.23 Other manufactures	1,44	118,4	125,8	125,2	-0,5	+5,7

Table 11 - Producer Price Index for materials used in certain industries

Base 2000=100

Industry	indices			% change between	
	Oct 2008	Sep 2009	Oct 2009	Sep 2009 and Oct 2009	Oct 2008 and Oct 2009
Building and construction	219,1	211,5	211,5	0,0	-3,4
Building industries	218,4	215,0	214,9	-0,0	-1,6
Civil engineering	219,6	209,8	209,5	-0,1	-4,5
Electrical engineering	198,6	184,4	184,4	0,0	-7,1
Mechanical engineering	202,0	193,1	192,9	-0,1	-4,5

Table 12 - Producer Price Index for selected materials

Base : 2000 = 100

Type of materials	indices			% change between		
	Oct 2008	Sep 2009	Oct 2009	Sep 2009 and Oct 2009	Oct 2008 and Oct 2009	
Aggregated crushed stone	249,4	274,4	274,4	0,0	+10,0	
Aluminium	Anodising	159,2	159,2	0,0	0,0	
	Basic forms	177,4	174,0	170,6	-1,9	-3,8
	Extruded products	246,1	246,1	246,1	0,0	0,0
	Sheeting	283,4	252,2	247,4	-1,9	-12,7
Aluminium lever furniture	174,2	174,2	174,2	0,0	0,0	
Angles, mild steel	324,8	241,3	241,3	0,0	-25,7	
Bead wire	217,7	193,6	193,6	0,0	-11,0	
Bearings, ball and roller	229,9	248,2	248,2	0,0	+7,9	
Billets, mild steel	324,1	294,3	294,3	0,0	-9,1	
Bitumen	399,0	342,9	331,8	-3,2	-16,8	
Bitumen and Acrylic Emulsion	206,2	225,5	225,5	0,0	+9,3	
Boxes, corrugated cardboard	148,9	156,5	157,1	+0,3	+5,5	
Bricks - Face	226,7	233,7	234,2	+0,2	+3,3	
Bricks - Stock	245,3	254,3	254,3	0,0	+3,6	
Building boards	159,7	168,3	167,5	-0,4	+4,8	
Ceiling materials	218,3	237,9	237,9	0,0	+8,9	
Cement Retail price	202,5	240,1	240,1	0,0	+18,5	
Cement building blocks	246,5	271,9	271,3	-0,2	+10,0	
Ceramic and encaustic wall and floor tiles and mosaics	116,0	120,1	120,1	0,0	+3,5	
Civil engineering plant	175,4	190,9	190,9	0,0	+8,8	
Coal, Anthracite - for local sales Grade A	100,7	100,7	100,7	0,0	0,0	
Coal, Anthracite - for local sales Grade SP	100,9	100,9	100,9	0,0	0,0	
Coal, Cobbles - grade A	400,5	389,8	389,8	0,0	-2,6	
Coal, Cobbles - grade B	322,1	313,4	313,4	0,0	-2,7	
Coal, Large nuts - grade A	152,3	152,3	152,3	0,0	0,0	
Coal, Large nuts - grade B	360,2	294,3	294,3	0,0	-18,2	
Coal, Peas - grade A	486,1	468,6	462,0	-1,4	-4,9	
Coal, Peas - grade B	562,8	521,0	520,8	-0,0	-7,4	
Coal, Small nuts - grade A	478,8	481,5	481,5	0,0	+0,5	
Coal, Small nuts - grade B	465,8	383,1	383,1	0,0	-17,7	
Coal, bituminous	261,1	256,8	277,2	+7,9	+6,1	
Coal, bituminous - for local sales	337,1	331,5	357,9	+7,9	+6,1	
Coast	332,8	249,1	232,3	-6,7	-30,1	
Coated profiled GMS sheeting (roofing)	292,4	227,4	227,4	0,0	-22,2	
Concrete pipes	170,7	155,4	155,4	0,0	-8,9	
Concrete roof tiles	258,6	275,7	275,7	0,0	+6,6	
Construction machinery (excluding trucks)	138,5	143,4	142,7	-0,4	+3,0	
Containers, glass	160,0	178,4	178,4	0,0	+11,5	
Copper Piping	333,3	281,4	281,4	0,0	-15,5	
Copper, basic forms	397,0	361,0	361,0	0,0	-9,0	
Coumarone indene resin (imported)	137,6	148,8	148,8	0,0	+8,1	
Craft paper	166,5	166,5	166,5	0,0	0,0	
Cylinder lock set	203,7	203,7	203,7	0,0	0,0	
Diesel at wholesale level	Coast	364,7	274,7	261,9	-4,6	-28,1
	Witwatersrand	367,8	277,7	265,0	-4,5	-27,9
Diesel oil	Coast and Witwatersrand	377,4	250,2	250,2	0,0	-33,7
	Retail Metropolitan and other urban areas	487,3	347,1	328,4	-5,4	-32,6
	Retail Metropolitan areas	384,2	264,8	255,1	-3,7	-33,6
Drainage	144,0	142,3	141,7	-0,4	-1,5	
Drop in ceiling tiles-gypsum	149,7	164,7	164,7	0,0	+10,0	
Drop-in ceiling tiles - masonite	199,0	223,6	223,6	0,0	+12,3	
Electrical contracting materials	215,9	217,3	217,3	0,0	+0,6	
Enamel paints	211,8	219,9	222,7	+1,2	+5,1	
Extruded aluminium distributor level	188,2	154,8	159,2	+2,8	-15,4	
Extruded aluminium section	246,5	246,5	246,5	0,0	0,0	
Fibre cement roof sheet	209,7	235,6	235,6	0,0	+12,3	
Fibrous insulation	Batten board	193,3	216,5	216,5	0,0	+12,0
	Ceiling insulation	150,9	169,0	169,0	0,0	+11,9
	Mattresses	200,5	224,5	224,5	0,0	+11,9

Type of materials	indices			% change between			
	Oct 2008	Sep 2009	Oct 2009	Sep 2009 and Oct 2009	Oct 2008 and Oct 2009		
		Preformed pipe sections	144,9	162,4	162,4	0,0	+12,0
Flush doors			260,6	285,7	285,7	0,0	+9,6
Foam insulation materials			254,0	234,0	226,7	-3,1	-10,7
		Polyurethane	254,0	234,0	226,7	-3,1	-10,7
Glass for the building industry cut to size			230,8	204,9	204,9	0,0	-11,2
Glass, for building industry			108,9	142,8	142,8	0,0	+31,1
Gypsum board			148,1	195,1	195,1	0,0	+31,7
Hinges			201,7	189,9	189,9	0,0	-5,8
Imported Meranti			129,6	94,6	88,5	-6,4	-31,7
Insulator, porcelain			197,8	178,0	178,0	0,0	-10,0
Ironmongery			173,8	166,4	166,3	-0,0	-4,3
Joint Sealants			164,3	202,2	202,2	0,0	+23,0
Leather, bovine hide			160,3	179,0	179,0	0,0	+11,6
Lever locks			184,6	196,7	196,7	0,0	+6,5
Mining machinery			165,3	155,1	155,1	0,0	-6,1
Modified Bitumen sheeting			212,0	225,0	225,0	0,0	+6,1
Natural stone, cut and sawn			152,3	153,1	153,1	0,0	+0,5
Ordinary and extended cement			250,6	304,6	302,7	-0,6	+20,7
PVC Pipes			185,2	145,6	145,6	0,0	-21,3
Paints			203,1	208,6	208,8	+0,0	+2,8
Paper, newsprint			224,0	236,7	236,7	0,0	+5,6
Partitioning materials			218,3	237,9	237,9	0,0	+8,9
Petro-chemical building materials			215,2	223,6	224,0	+0,1	+4,0
Plastic bottles			260,2	244,4	244,2	-0,0	-6,1
Plastic, bulk forms			198,3	195,9	192,1	-1,9	-3,1
Plate, mild steel			292,4	227,4	227,4	0,0	-22,2
Plumbing			165,3	168,7	168,5	-0,1	+1,9
Polybutadiene			377,1	222,1	280,2	+26,1	-25,6
Processing oil			258,4	179,7	188,9	+5,1	-26,8
Profiled aluminium roofing			192,6	193,8	193,8	0,0	+0,6
Profiled aluminium roofing - distributor level			176,3	142,0	146,6	+3,2	-16,8
Reinforcing steel			369,7	267,4	267,4	0,0	-27,6
Resilient floor coverings			213,0	213,6	214,0	+0,1	+0,4
Rubber crude			203,2	162,5	163,7	+0,7	-19,4
		Rubber crude Synthetic	262,0	202,8	204,6	+0,8	-21,9
		Rubber crude Synthetic Local	262,0	202,8	204,6	+0,8	-21,9
Rubber industry's indices		Carbon black - N660	293,2	293,2	293,2	0,0	0,0
		Carbon black - N774	262,9	283,9	283,9	0,0	+7,9
		Natural rubber imported	320,0	189,7	194,5	+2,5	-39,2
SA Pine, kiln dried			249,5	259,1	242,1	-6,5	-2,9
Sand			148,2	157,1	157,1	0,0	+6,0
Self-Adhesive sheeting			149,5	201,6	201,6	0,0	+34,8
Sementitious paints			209,2	209,2	209,2	0,0	0,0
Sheet, galvanized			299,5	232,9	232,9	0,0	-22,2
Sheet, uncoated			271,9	258,6	258,6	0,0	-4,8
Small steel sections			172,8	174,3	174,3	0,0	+0,8
Stainless steel products, flat rolled			231,3	182,0	182,0	0,0	-21,3
Steel tubes, pipes and fittings			145,3	114,9	114,9	0,0	-20,9
Structural steel products			379,5	245,5	245,5	0,0	-35,3
Structural steel, unworked			361,1	314,3	314,3	0,0	-12,9
Sulphuric acid			190,6	207,6	207,6	0,0	+8,9
Synthetic rubber		1502	358,6	209,0	260,9	+24,8	-27,2
		1712	329,2	211,8	252,7	+19,3	-23,2
Tar			270,9	229,6	213,1	-7,1	-21,3
Tile adhesives			219,0	254,3	254,3	0,0	+16,1
Tinplate			179,8	297,8	297,8	0,0	+65,6
Transformer oil			286,2	290,2	269,7	-7,0	-5,7
Trucks			149,4	159,4	159,4	0,0	+6,6
Trucks and buses			144,3	156,5	156,5	0,0	+8,4
Tyres and tubes			233,6	235,7	235,7	0,0	+0,8
Vinyl sheeting flooring			173,0	177,2	179,0	+1,0	+3,4
Vinyl tiles flooring			182,6	196,3	206,1	+4,9	+12,8
Wash and basin			137,0	139,8	139,8	0,0	+2,0
Water-closet system (WC's)			137,2	153,8	153,8	0,0	+12,0
Waterproofing			203,6	212,1	215,2	+1,4	+5,6

Type of materials		indices			% change between	
		Oct 2008	Sep 2009	Oct 2009	Sep 2009 and Oct 2009	Oct 2008 and Oct 2009
White glazed ceramic tiles		216,2	216,2	216,2	0,0	0,0
Witwatersrand	Petrol, 93 octane	332,8	249,1	232,3	-6,7	-30,1
Wood products, excluding mine wood		187,1	194,3	193,0	-0,6	+3,1
Wool, auction prices, 18 types		193,2	178,8	200,2	+11,9	+3,6
Woven needle punch carpeting		206,5	239,2	239,2	0,0	+15,8

NOTES

Forthcoming issues

Issue

November 2009
 December 2009
 January 2010
 February 2010
 March 2010
 April 2010
 May 2010

Expected date of publication

17 December 2009
 28 January 2010
 25 February 2010
 25 March 2010
 29 April 2010
 27 May 2010
 24 June 2010

Purpose of the survey

The surveys of prices of commodities in domestic output (including exports), imported commodities, and exported commodities are monthly surveys covering samples of manufacturers, importers and exporters in the South African economy. The results of the survey are used to compile the Producer Price Index (PPI) which indicates changes in Producer prices of locally produced commodities (including exports), imports and exports. These statistics are used by the private sector for contract price adjustments, and as a deflator in the compilation of national accounts.

Rebasing

The base year of the Producer Price Index (PPI) is still 2000 = 100. For historical rebasing see the statistical release P0142.4.

Special Data Dissemination Standard (SDDS) of the International Monetary Fund (IMF)

South Africa's data dissemination practices are assessed against the IMF's Special Data Dissemination Standard (SDDS). A detailed description of the SDDS can be found on the IMF's Dissemination Standards Bulletin Board on the internet at <http://dsbb.imf.org>. The SDDS prescribes two to four monitorable elements or good practice that can be observed, or monitored, by users of statistics. These include coverage, periodicity and timeliness, and access to a scheduled release calendar. The SDDS in essence sets standards for the disclosure and transparency of statistics.

South Africa subscribed to the SDDS in 2 August 1996 and posted its metadata as of 27 September 1996. South Africa has met the SDDS specifications for the coverage, periodicity and timeliness of the data, and for the dissemination of advanced release calendars since 18 September 2000.

Stats SA is responsible for compiling and disseminating data on the producer price index, national accounts, government accounts, industry-based statistics, social statistics, the producer price index, consumer price index, labour market and population statistics.

Reports on Observance of Standards and Codes (ROSC) of the International Monetary Fund (IMF)

The IMF has worked on producing ROSC as a step to strengthen the international financial system. The objectives of ROSC include the promotion of increased transparency, and the implementation of internationally accepted standards and codes.

The data dissemination module of the ROSC provides a summary of South Africa's practices on the coverage, periodicity and timeliness of the data categories specified in the IMF's SDDS, and on the practices on the provision of advance release calendars for the data. The ROSC is complemented by an assessment of the quality of the Producer Price Index, using the Data Quality Assessment Framework (DQAF) as developed by the IMF's Statistics Department.

The DQAF assess data quality in terms of -

- Prerequisites of quality;
- Integrity;
- Methodological soundness;
- Accuracy and reliability;
- Serviceability; and
- Accessibility

For South Africa's compliance and performance on the quality of data see <http://www.imf.org/external/np/rosc/rosc.asp>.

Methodological notes Stats SA released a new re-weighted PPI in January 2008 using a revised basket of indicator products.

The new basket of indicator products for locally produced commodities, import and export commodities was compiled through use of several information sources. The information sources used to select relevant indicator products in the different industries are indicated in table A.

Table A – Information sources used to select products in different producer industries

Main products and industries	Sources
Locally produced items	
Agriculture Fishing Forestry	Stats SA, Census of Agriculture, 2005 Fishing Industry Handbook, 2005 Commercial Timber Resources and Roundwood Processing in South Africa, 2005
Mining and quarrying Manufacturing Electricity Gas Water	Department of Mineral Resources Stats SA, Large Sample Survey, 2005 Stats SA, Department Energy Stats SA, Economic Activity Survey, 2005 Department of Water Affairs
Imported items	South African Revenue Services
Exported items	South African Revenue Services

The products were classified according to the relevant Central Product Classification (CPC) and at industry level were classified using Standard Industrial Classification (SIC) subgroups. At industry level, value added was used to determine industry weights. At product level, the products in each subgroup were sorted according to their value of sales. The products contributing to the top 80% of the sales in each subgroup were selected as indicator products. These are the products for which prices will be monitored periodically by Stats SA.

The questionnaire(s) for each subgroup, which are used to collect the relevant price information from respondents, were adjusted to include the newly selected indicator products. Although the products on each questionnaire differ from the other questionnaires, their layout is identical.

For each indicator product a sample of manufacturers, importers and exporters was drawn from all the manufacturers, importers and exporters who manufacture, import or export the specific indicator product. The list of manufacturers, importers and exporters (sampling frame), from which the samples were drawn, are indicated in table B.

Table B – Sampling frame

Main products and industries	Sources
Locally produced and sold products	
Agriculture	List of fresh produce markets
Mining and quarrying	List of mines
Forestry	List obtained from Department Agriculture, Forestry and Fishing Old sample of PPI
Fishing	Old sample of PPI List obtained from other sources
Manufacturing	List of manufacturers from Stats SA, Large Sample Survey, 2005 List of manufactures from Stats SA, Business Register List of producers from industry associations
Electricity and gas	List of producers according to Stats SA, Economic Activity Survey
Water	Old sample of PPI List obtained from Department of Water Affairs
Imported products	List of importers obtained from South African Revenue Services
Exported products	List of exporters obtained from South African Revenue Services

ADDITIONAL INFORMATION

EXPLANATORY NOTES

- Introduction** 1 This publication contains results of monthly surveys of prices of locally produced commodities (including exports), imported and exported commodities. The price indices are calculated at base 2000=100.
- Scope of the PPI survey** 2 The indices are compiled on a gross industry basis, i.e. each index relates to those articles, which are produced, imported and exported by the designated industries of the South African economy. Selling prices are collected from manufacturers, importers and exporters.
- Classification** 3 The 1993 edition of the Standard Industrial Classification of all Economic Activities (SIC), Fifth edition, Report No. 09-90-02 was used to classify the industries in the survey. The SIC is based on the 1990 International Standard Industrial Classification of all Economic Activities (ISIC) with suitable adaptations for local conditions. The Central Product Classification (CPC) Version 1.1, Series M No 77 was used to classify the products in the survey.
- 4 This publication presents information, which measures changes in prices of products, which are produced, imported or exported by establishments.
- Statistical unit** 5 The statistical unit is the establishment (branch), which is the smallest economic unit that functions as a separate entity. Each statistical unit is classified to an industry according to the classification of the products that the unit manufactures imports or exports.
- Survey methodology and design** 6 Different phases of sampling take place. Firstly, a sample of products, based on the information collected through the Large Sample Survey of 2005 and 2005 information on imports and exports received from SARS is designed and drawn. An indicator product is selected purposively within each product group. To be selected, a product should be part of the top 80% of products manufactured, imported or exported in that product group. Furthermore, it must be possible to obtain price quotations for the relevant product during the whole year. The sample of indicator products is revised every five years at which stage the weights of the indicator products/groups are also revised.
- This survey is collected by mail from an original sample of approximately 2 325 manufacturers, 2 325 exporters and 2 325 importers. The indices are based on producer prices at the point of Producer in the case of commodities produced in South Africa, and “ex-warehouse”, in the case of imported commodities. Prices “delivered” or “free on rail” are accepted if this is the normal basis of quotation.
- Currently, an average of 13 000 price quotations are collected each month from approximately 2 700 outlets by means of 1 500 distinct questionnaires.
- Pricing basis** 7 Price information refers to the first seven days of the relevant month, except in the case of mining and most of the agricultural products, where it refers to the average price for the month. The average price of imported crude petroleum, used in the compilation of the import component of the PPI, is calculated as the value (in Rands) divided by the quantity of imported crude petroleum for the relevant month. **The prices of all items exclude Value Added Tax (VAT).**

Weighting basis

- 8 The index is a fixed weight index as the weights are determined in the base period and they do not change until the next base period. The commodities directly represented in the index, were selected on the basis of the values of sales of products –
- produced during 2005 for locally produced commodities;
 - exported during 2005; and
 - imported during 2005.

These commodities constitute approximately 80 percent of the total value of Producer/imports/exports during the relevant year as indicated above. Weights were allocated to each product in accordance with the value of sales for each item during the 2004/05 financial year. The basis on which the weighting structure of each main PPI component, indicated in the tables published in this statistical release, was calculated, is indicated in table C.

Table C– Basis on which the weighting structure of each PPI table is based

Number of table in this statistical release	PPI component	Basis for weighting structure
Table 8	Domestic output of South African industry groups	Sales value of South African Producer (Weighted using the National Accounts value added weights)
Table 9	Exported commodities	Sales value of exported commodities
Table 10	Imported commodities	Sales value of imported commodities
Table 11	Materials used in certain industries	Value of materials used

Processing of price information

- 9 The prices that are quoted for the different products are checked. If the price difference between two successive periods is outside the specified range of increase (+5%) or decreases (-5%), the current price levels are confirmed with relevant respondents.

Calculating product price indices

- 10 Price relatives are calculated for each product per respondent by dividing the current prices by the previously quoted price. The price relative for each product is calculated by means of the geometric mean of the price relatives for each respondent. This price relative for each product is then applied to the product index for the previous month in order to obtain a product index for the relevant month.

Calculating group price indices

- 11 Group price indices are calculated by weighting product indices with the relevant product weight, according to each group's (local, import, export) weighting structure, using the Laspeyres index formula.

Contributions of specific products to the total PPI

- 12 The monthly (annual) contribution of a specific product or group of products to the total PPI is calculated by multiplying the weight of this product or group of products with the monthly (annual) change in the index for this product or group of products, divided by the index for 'All groups'.

Price indices for diesel	13	<p>The price index for diesel (Coast and Witwatersrand) is based on the refinery prices of diesel.</p> <p>The retail price index for diesel (metropolitan and other urban areas) is based on retail prices obtained from a sample of 84 retail outlets throughout the country. The diesel indices for the different areas are weighted according to the diesel volume distribution as obtained from the South African Petroleum Industry Association (SAPIA).</p> <p>The retail price index for diesel (metropolitan areas) is based on retail prices obtained from a sample of only 48 outlets in the historical metropolitan areas of the CPI. The diesel indices for the different areas are weighted according to the diesel volume distribution in the relevant areas as obtained from the South African Petroleum Industry Association (SAPIA).</p> <p>The price index for diesel at wholesale level (coast and Witwatersrand) is based on the regulated wholesale prices of diesel.</p>										
Reliability of estimates	14	<p>Inaccuracies may occur because of imperfections in reporting by establishment (branch) and errors made in collection and processing of the data. Inaccuracies of this kind are referred to as non-sampling errors. Every effort is made to reduce non-sampling errors to a minimum by careful designing the questionnaires, editing data and efficient operating procedures.</p>										
Related publications	15	<p>Users may also wish to refer to the following publications, which are available from Stats SA -</p> <ul style="list-style-type: none"> • Bulletin of Statistics; and • SA Statistics. 										
Unpublished statistics	16	<p>In some cases, Stats SA can also make available information, which is not published. This information can be made available in one or more of the following ways: computer printout, diskette or CD. Generally a fee is levied for providing unpublished information.</p>										
Symbols and abbreviations	17	<table border="0"> <tr> <td style="padding-right: 20px;">Stats SA</td> <td>Statistics South Africa</td> </tr> <tr> <td>..</td> <td>not available</td> </tr> <tr> <td>-</td> <td>nil or not applicable</td> </tr> <tr> <td>*</td> <td>revised since previous publication</td> </tr> <tr> <td>avg</td> <td>average</td> </tr> </table>	Stats SA	Statistics South Africa	..	not available	-	nil or not applicable	*	revised since previous publication	avg	average
Stats SA	Statistics South Africa											
..	not available											
-	nil or not applicable											
*	revised since previous publication											
avg	average											

GLOSSARY

Annual percentage change	The annual percentage change is the change in the index of the relevant month of the current year compared with the index of the same month in the previous year expressed as a percentage and is generally accepted as the yardstick of PPI inflation.
Overall average annual percentage change	The overall average annual percentage change is the change in the average index of one year compared with the average index of the previous year expressed as a percentage.
Contribution of specific products to the total PPI	The monthly (annual) contribution of a specific product or group of products to the total PPI is calculated by multiplying the weight of the index with the monthly annual change of the index divided by the index for "All Items".
Establishment	An establishment (branch) is the smallest economic unit that functions as a separate entity.
Indicator products	Indicator products are those products whose sale values represent 80% of the total value of sales (turnover) in an industrial subgroup.
Monthly percentage change	The monthly percentage change is the change in the index of the relevant month compared to the index of the previous month expressed as a percentage.
Weights	The weights are the relevant importance of the indicator products in that subgroup. The weight of a product is calculated by dividing the actual value of sales of the relevant indicator product by the total value of sales in that subgroup.

FOR MORE INFORMATION

Stats SA publishes approximately 300 different releases each year. It is not economically viable to produce them in more than one of South Africa's eleven official languages. Since the releases are used extensively, not only locally but also by international economic and social-scientific communities, Stats SA releases are published in English only.

Stats SA has copyright on this publication. Users may apply the information as they wish, provided that they acknowledge Stats SA as the source of the basic data wherever they process, apply, utilise, publish or distribute the data; and also that they specify that the relevant application and analysis (where applicable) result from their own processing of data.

Advance release calendar

An advance release calendar is disseminated on www.statssa.gov.za

Stats SA products

A complete set of Stats SA publications is available at the Stats SA Library and the following libraries -

National Library of South Africa, Pretoria Division
National Library of South Africa, Cape Town Division
Natal Society Library, Pietermaritzburg
Library of Parliament, Cape Town
Bloemfontein Public Library
Johannesburg Public Library
Eastern Cape Library Services, King William's Town
Central Regional Library, Polokwane
Central Reference Library, Nelspruit
Central Reference Collection, Kimberley
Central Reference Library, Mmabatho

Stats SA also provides a subscription service.

Electronic services

A large range of data are available via on-line services, diskette and computer printouts. For more details about our electronic data services, contact (012) 310 8600/8390/8351/4892/8496/8095.

You can visit us on the Internet at: www.statssa.gov.za

Enquiries

Technical enquiries: Marais Kleu
(012) 310 8170

For media enquiries contact:
Mr T Oosterwyk, Manager, at (012) 310-8130 or 082-908-9104

Telephone number: (012) 310 6917/8137/8377 (survey area)
(012) 310 8600/8390/8351/4892/8496/8095 (user information services)
(012) 310 8161 (orders)
(012) 310 8490 (library)

Fax number: (012) 321 3220/6

email: ppi@statssa.gov.za (technical enquiries)
info@statssa.gov.za (user information services)
distribution@statssa.gov.za (orders)

Postal address: Private Bag X 44, Pretoria, 0001

Produced by Stats SA