

Production Price Index (CPI)

October 2002

Co-operation between Statistics South Africa (Stats SA), the citizens of the country, the private sector and government institutions is essential for a successful statistical system. Without continued co-operation and goodwill, the timely release of relevant and reliable official statistics will not be possible.

Stats SA publishes approximately three hundred different releases each year. It is not economically viable to produce them in more than one of South Africa's eleven official languages. Since the releases are used extensively, not only locally, but also by international economic and social-scientific communities, Stats SA releases are published in English only.

This data in this statistical release adheres to the Special Data Dissemination Standard (SDDS) of the International Monetary Fund (IMF), which sets out standards on coverage, periodicity and timeliness of data; access by the public; integrity; and quality of the disseminated data.

Embargo: 11:30
Date: 27 November 2002

KEY FIGURES AS AT OCTOBER 2002

Production Price Index and rates of change according to main components

Base: 2000 = 100

Production Price Index components	Indices			Percentage change between		
	Oct 2001	Sep 2002	Oct 2002	Sep 2002 and Oct 2002		Oct 2001 and Oct 2002
				Actual %	Seasonally adjusted %	Actual %
All commodities for consumption in South Africa	111,1	126,4	127,3	+ 0,7	+0,6	+ 14,6
Locally produced commodities	110,4	125,1	126,1	+0,8	+0,9	+14,2
Imported commodities	112,6	129,4	130,2	+0,6	+0,6	+15,6
Output of South African industry						
Total output	110,1	124,3	125,1	+0,6	+0,8	+13,6
For South African consumption	110,4	125,1	126,1	+0,8	+0,9	+14,2

KEY FINDINGS AS AT OCTOBER 2002

Annual percentage change in the PPI is lower at 14,6% at October 2002 (i.e. the PPI at October 2002 compared with that at October 2001)

The Production Price Index (PPI) for all commodities for South African consumption shows an annual rate of increase of 14,6% at October 2002 (i.e. the PPI at October 2002 compared with that at October 2001). This rate is 0,8 of a percentage point lower than the corresponding annual rate of 15,4% at September 2002 (i.e. the PPI at September 2002 compared with that at September 2001) (cf. table 1, p. 8). This lower annual rate at October 2002 compared with that at September 2002 can be explained by decreases in inflation rates for the following:

- *Food at manufacturing decreased from a rate of + 28,3% to a still high, but lower rate, of + 26,8%.*
- *Agricultural products decreased from a rate of + 30,5% to a still high, but lower rate, of + 26,2%.*
- *Gas, steam and water decreased from a rate of + 15,5% to + 13,3%.*
- *Transport equipment decreased from a rate of + 12,6% to + 12,1%.*
- *Metal products decreased from a rate of +11,3% to + 10,6%.*
- *Electricity decreased from a rate of - 15,3% to - 19,7 %.*

However, these lower annual rates of increase were partially counteracted by higher annual rates of increase reflected at October 2002 (i.e. the specific indices at October 2002 compared with that at October 2001). This higher annual rate at October 2002 compared with that at September 2002 can be explained by increases in inflation rates for the following:

- *Mining and quarrying products increased from a rate of + 19,5% to + 20,1%.*
- *Basic metals increased from a rate of + 17,0% to + 17,1%.*

From September 2002 to October 2002 this index increased by 0,7% and the seasonally adjusted index increased by 0,6%.

The annual increase of 14,6% in the PPI for all commodities for South African consumption is due to annual increases in the price indices for locally produced commodities (+ 10,3 percentage points) and imported commodities (+ 4,3 percentage points). The PPI for locally produced commodities and imported commodities contributed less to the annual increase of 14,6% in the PPI for all commodities for South African consumption at October 2002 (+ 10,3 percentage points and + 4,3 percentage points respectively) than at September 2002 (+ 10,8 percentage points and + 4,6 percentage points respectively) (cf. table 2, p. 8).

Annual percentage change in the PPI for locally produced commodities for consumption in South Africa is lower at 14,2% at October 2002 (i.e. the PPI at October 2002 compared with that at October 2001)

The annual rate of increase in the PPI for locally produced commodities for consumption in South Africa is 14,2% at October 2002 (i.e. the PPI at October 2002 compared with that at October 2001), which is 0,7 of a percentage point lower than the corresponding annual rate of 14,9% at September 2002 (i.e. the PPI at September 2002 compared with that at September 2001) (cf. table 1, p. 8). From September 2002 to October 2002 this index increased by 0,8% and the seasonally adjusted index increased by 0,9%.

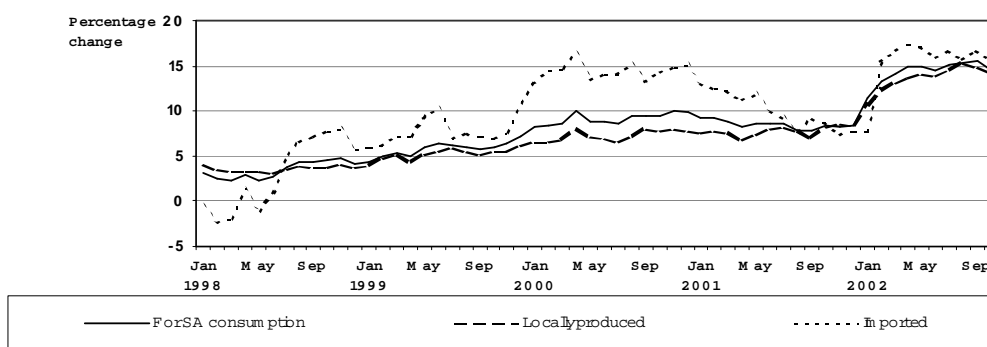
The annual increase of 14,2% in the PPI for locally produced commodities for consumption in South Africa is mainly due to annual increases in the price indices for food at manufacturing (+ 3,6 percentage points), agricultural products (+ 2,8 percentage points), paper, paper products and printing (+ 1,6 percentage points), chemicals and chemical products (+ 1,0 percentage point), transport equipment (+ 1,0 percentage point), basic metals (+ 0,7 of a percentage point) and products of petroleum and coal (+ 0,5 of a percentage point). These annual increases were partially counteracted by an annual decrease in the price index for electricity (- 1,1 percentage points) (cf. table 6, p. 10).

Annual rate of change in the PPI for imported commodities is lower at 15,6% at October 2002 (i.e. the PPI at October 2002 compared with that at October 2001)

The PPI for imported commodities shows an annual rate of increase of 15,6% at October 2002 (i.e. the PPI at October 2002 compared with that at October 2001). This rate is 1,1 percentage points lower than the corresponding annual rate of 16,7% at September 2002 (i.e. the PPI at September 2002 compared with that at September 2001) (cf. table 1, p. 8). From September 2002 to October 2002 this index, as well as the seasonally adjusted index increased by 0,6%.

The annual increase of 15,6% in the PPI for imported commodities is mainly due to annual increases in the price indices for mining and quarrying products (+ 2,9 percentage points), non-electrical machinery and equipment (+ 2,8 percentage points), chemicals and chemical products (+ 2,3 percentage points), transport equipment (+ 2,3 percentage points), paper, paper products and printing (+ 0,7 of a percentage point), food at manufacturing (+ 0,6 of a percentage point), medical, precision and optical instruments (+ 0,5 of a percentage point) and agricultural products (+ 0,5 of a percentage point) (cf. table 8, p. 11).

Figure 1 – Annual percentage change in the Production Price Index: Commodities for South African consumption



Source: Stats SA

Contributions to monthly changes

PPI for all commodities for South African consumption

The monthly increase of 0,7% in the PPI for all commodities for South African consumption is due to monthly increases in the price indices for locally produced commodities (+ 0,6 of a percentage point) and for imported commodities (+ 0,1 of a percentage point) (cf. table 3, p. 8).

PPI for locally produced commodities for consumption in South Africa

The monthly increase of 0,8% in the PPI for locally produced commodities for consumption in South Africa is due to monthly increases in the price indices for paper, paper products and printing (+ 0,3 of a percentage point), chemicals and chemical products (+ 0,2 of a percentage point), agricultural products (+ 0,1 of a percentage point), food at manufacturing (+ 0,1 of a percentage point), products of petroleum and coal (+ 0,1 of a percentage point) and basic metals (+ 0,1 of a percentage point), which was partially counteracted by a monthly decrease in the price index for electricity (- 0,2 of a percentage point) (cf. table 7, p. 10).

PPI for imported commodities

The monthly increase of 0,6% in the PPI for imported commodities is due to the monthly increases in the price indices for transport

equipment (+ 0,2 of a percentage point), mining and quarrying products (+ 0,1 of a percentage point), food at manufacturing (+ 0,1 of a percentage point), paper, paper products and printing (+ 0,1 of a percentage point) and non-electrical machinery and equipment (+ 0,1 of a percentage point) (cf. table 9, p. 11).

Monthly changes in the PPI for all commodities for South African consumption

Relatively large monthly increases occurred in the price indices for products of petroleum and coal (+ 3,6%), paper, paper products and printing (+ 2,4%), tobacco products (+ 2,3%), leather and leather products (+ 2,2%), chemicals and chemical products (+ 1,6%), food at manufacturing (+ 1,1%), basic metals (+ 1,0%) and beverages (+ 0,9%), while monthly decreases occurred in the price indices for electricity (- 6,1%), office, accounting and computing machinery (- 0,4%) and metal products (- 0,1%) (cf. table 10, p. 12).

Monthly changes in the PPI for imported commodities

Monthly increases occurred in the price indices for food at manufacturing (+ 1,9%), paper, paper products and printing (+ 1,7%), mining and quarrying products (+ 1,3%), non-metallic mineral products (+ 1,3%), transport equipment (+ 1,1%), wearing apparel (+ 0,9%), non-electrical machinery and equipment (+ 0,7%) and other manufactures (+ 0,7%). These monthly increases were counteracted by relatively large monthly decreases in the price indices for agricultural products (- 0,7%), basic metals (- 0,7%), metal products (- 0,5%), leather and leather products (- 0,4%), office, accounting and computing machinery (- 0,4%) and rubber and plastic products (- 0,1%) (cf. table 13, p. 18).

Monthly changes in the PPI for exported commodities

From September 2002 to October 2002, the PPI for exported commodities increased by 0,2%. Relatively large monthly increases occurred in the price indices for exported leather and leather products (+ 5,2%), rubber and plastic products (+ 4,2%), paper, paper products and printing (+ 4,1%), beverages (+ 2,0%), agricultural products (+ 1,6%), fishing products (+ 1,4%) and wood and wood products (+ 1,3%). These monthly increases were partially counteracted by monthly decreases in the price indices for product of petroleum and coal (- 2,1%) and basic metals (- 0,7%) (cf. table 14, p. 20).

Coverage of services in the PPI

It should be noted that services are not included in the basket of items (indicator products and weights) from which the PPI is calculated, nor included in the pricing surveys for PPI, while services are included in the CPI basket of items and the pricing surveys for the CPI. Therefore, the effect of lower inflation on services included in the CPI will not influence the PPI.

PP
P J Lehohla
Statistician General: Statistics South Africa

CONTENTS		Page
Notes	5
Tables		
Table 1	Production Price Index (PPI) and the annual percentage change in the PPI on a monthly basis	8
Table 2	Contributions to the annual percentage change in the PPI for all commodities for consumption in South Africa according to their origin	8
Table 3	Contributions to the monthly percentage change in the PPI for all commodities for consumption in South Africa according to their origin	8
Table 4	Contributions to the annual percentage change in the PPI for all commodities for consumption in South Africa according to group	9
Table 5	Contributions to the monthly percentage change in the PPI for all commodities for consumption in South Africa according to group	9
Table 6	Contributions to the annual percentage change in the PPI for locally produced commodities for South African consumption according to group	10
Table 7	Contributions to the monthly percentage change in the PPI for locally produced commodities for South African consumption according to group	10
Table 8	Contributions to the annual percentage change in the PPI for imported commodities according to group	11
Table 9	Contributions to the monthly percentage change in the PPI for imported commodities according to group	11
Table 10	Production Price Index for consumption in South Africa and percentage change according to origin and group	12
Table 11	Production Price Index for total output of South African industry groups and percentage change according to destination and group	14
Table 12	Production Price Index for output of South African industry groups for South African consumption and percentage change according to group	16
Table 13	Production Price Index for imported commodities and percentage change according to group	18
Table 14	Production Price Index for exported commodities and percentage change according to group	20
Table 15	Production Price Index and percentage change for materials used in certain industries .	22
Table 16	Production Price Index and percentage change for selected materials	22
Table 17	Seasonally adjusted Production Price Index	24
Additional information		
	Explanatory notes	25
	Glossary	28
For more information	29

issues	November 2002	18 December 2002
	December 2002	29 January 2003
	January 2003	26 February 2003
	February 2003	26 March 2003
	March 2003	23 April 2003
	April 2003	22 May 2003

Purpose of the survey The Surveys of Prices of Locally Produced commodities (which are locally sold or exported) and Imported Commodities are monthly surveys covering samples of manufacturers, exporters and importers operating in the South African economy. The results of the survey are used to compile the Production Price Index (PPI), an economic indicator, which indicates the changes in production prices of locally produced commodities (which are locally sold or exported) and imported commodities. These statistics are used by the private sector in the analysis of comparative business and industry performance, as well as for contract price adjustments.

Rebasing the PPI from 1995=100 to 2000=100 Following international practice, the base year of the Production Price Index (PPI) has been changed from 1995 =100 to 2000 =100 with effect from February 2001. For more information see the statistical release P0142.4 for the historical figures.

Special Data Dissemination Standard (SDDS) of the International Monetary Fund (IMF) South Africa's data dissemination practices are assessed against the IMF's Special Data Dissemination Standard (SDDS). A detailed description of the SDDS can be found on the IMF's Dissemination Standards Bulletin Board on the internet at <http://dsbb.imf.org>. This is a "best practice" standard. It covers four sectors of the economy i.e. the real, fiscal, financial and external sectors, as well as population and identifies four dimensions i.e. data, access, integrity and quality, of data dissemination. For each of these dimensions, the SDDS prescribes two to four monitorable elements or good practices that can be observed, or monitored, by users of statistics. However, the IMF's monitoring of the SDDS as authorised by the IMF's Board of Executive Directors is limited to the dimensions of data i.e. coverage, periodicity and timeliness, and access i.e. advanced release calendar. It should also be noted that the SDDS is a disclosure standard, i.e. it focuses on encouraging the authorities to provide information to users, including information that will enable users to assess the data.

The four institutions responsible for the compilation and dissemination of the SDDS prescribed data categories are National Treasury, the South African Revenue Services (SARS), the South African Reserve Bank (SARB) and Statistics South Africa (Stats SA).

National Treasury is responsible for compiling and disseminating data on the national budget (budgetary central government operations). SARS is responsible for compiling and disseminating of data on international merchandise trade.

The SARB is responsible for compiling and disseminating data on national accounts, the analytical accounts of the banking sector, the analytical accounts of the central bank, general government operations, consolidated government operations, central government debt, interest rate, exchange rates, share price indices, balance of payments, the international investment position, international reserves and foreign currency liquidity.

Stats SA is responsible for compiling and disseminating data on the production index, national accounts, the production price index, consumer price index, labour market and population.

South Africa has subscribed to the SDDS since 2 August 1996 and started posting its metadata on 27 September 1996. South Africa met the SDDS specifications for the coverage, periodicity and timeliness of the data, and for the dissemination of advanced release calendars on 18 September 2000. The National Summary Data Page has been hyperlinked since 24 April 1997 and the Data Template on International Reserves and Foreign Currency Liquidity was disseminated on 1 September 2000. South Africa is the only subscriber to the SDDS from the African continent.

Reports on Observance of Standards and Codes (ROSC) of the International The IMF has been working actively on producing Reports on Observance of Standards and Codes (ROSC) as a step to strengthen the architecture of the international financial system. The objectives of the ROSC include the promotion of increased transparency and encouragement of implementation of internationally accepted standards and codes. One of the ROSC components is the data dissemination module, which falls under the responsibility of

Monetary Fund (IMF)

the IMF's Statistics Department (STA). In this module, a country is assessed according to the SDDS.

The data dissemination module of the ROCS provides a summary of South Africa's practices on the coverage, periodicity and timeliness of the data categories specified in the IMF's SDDS, and on the practices on the provision of advance release calendars for these categories. It is complemented by an assessment of the quality of the Production Price Index, using the Data Quality Assessment Framework (DQAF) developed by the IMF's Statistics Department.

The DQAF undertakes to assess data quality under the following dimensions -

- Prerequisites of quality;
- Integrity;
- Methodological soundness;
- Accuracy and reliability;
- Serviceability; and
- Accessibility

An IMF delegation visited South Africa from 7 to 18 May 2001 and produced a data ROSC for South Africa. This ROSC indicates to which extent South Africa has observed the IMF's requirements and is available at <http://www.imf.org/external/np/rosc/rosc.asp>.

Methodological notes

According to international best practice, the PPI is reweighted every five years. Stats SA reweighted the PPI as from June 1999 using a new basket of indicator products and their relevant weights.

The new baskets of indicator products manufactured and sold locally, exported and imported were compiled through various information sources. The information sources used to select the relevant indicator products in the different production industries are indicated in table A.

Table A – Information sources used to select products in the different production industries

Main products and industries	Sources
Locally produced and sold items	
Agriculture	Department of Agriculture
Fishing	Fishing Handbook, 1996
Forestry	Commercial Timber Resources and Roundwood Processing in South Africa, 1996
Mining and quarrying	Department of Minerals and Energy Affairs
Manufacturing	Stats SA, Census of Manufacturing, 1996
Electricity, gas and steam	Stats SA, Census of Electricity, Gas and Steam, 1995
Water	Department of Water Affairs and Forestry
Imported items	South African Revenue Services
Exported items	South African Revenue Services

The products were classified according to the relevant Standard Industrial Classification (SIC) subgroups. The products in each subgroup were then sorted according to their value of sales. The products contributing to the top 80% of the sales in each subgroup were selected as indicator products. These are the products for which prices will be monitored periodically by Stats SA.

The questionnaire(s) for each subgroup, which are used to collect the relevant price information from respondents, were adjusted to include the newly selected indicator products. Although the products on each questionnaire differ from the other questionnaires, their layout is identical.

For each indicator product a sample of manufacturers, importers and exporters was drawn

from all the manufacturers, importers and exporters who manufacture, import or export the specific indicator product. The list of manufacturers, importers and exporters (sampling frame), from which the samples were drawn, are indicated in table B.

Table B– Sampling frame

Main products and industries	Sources
Locally produced and sold products	
Agriculture	List of fresh produce markets
Mining and quarrying	List of mines
Forestry	List obtained from Department of Agriculture Old sample of PPI
Fishing	Old sample of PPI List obtained from other sources
Manufacturing	List of manufacturers from the Census of Manufacturing, 1996 List of manufactures from trade unions
Electricity, gas and steam	List of producers according to the Census Of Electricity, Gas and Steam, 1995
Water	Old sample of PPI.
Imported products	List of importers obtained from South African Revenue Services
Exported items	List of exporters obtained from South African Revenue Services

Table 1 - The Production Price Index (PPI) and the annual percentage change in the PPI on a monthly basis

Base : 2000 = 100

Year		Jan.	Feb.	Mar.	Apr.	May	Jun.	Jul.	Aug.	Sep.	Oct.	Nov.	Dec.	Avg.
Commodities for consumption in South African														
2000	Index	+95,9	+96,4	+96,9	+98,6	+98,8	+99,5	100,1	101,4	101,6	102,4	103,7	104,2	100,0
	%	+8,2	+8,4	+8,6	+10,0	+8,8	+8,9	+8,6	+9,4	+9,4	+9,5	+10,0	+9,9	+9,2
2001	Index	104,8	105,2	105,5	106,6	107,3	108,1	108,7	109,4	109,5	111,1	112,2	112,9	108,4
	%	+9,3	+9,1	+8,9	+8,1	+8,6	+8,6	+8,6	+7,9	+7,8	+8,5	+8,2	+8,3	+8,4
2002	Index	116,9	119,1	120,4	122,4	123,3	123,7	125,2	126,2	126,4	127,3
	%	+11,5	+13,2	+14,1	+14,8	+14,9	+14,4	+15,2	+15,4	+15,4	+14,6
Locally produced commodities														
2000	Index	+96,4	+97,0	+97,3	+99,0	+99,3	+99,7	100,2	101,2	101,7	102,1	102,9	103,1	100,0
	%	+6,5	+6,6	+6,7	+8,0	+7,1	+7,0	+6,6	+7,2	+8,0	+7,8	+8,0	+7,8	+7,3
2001	Index	103,8	104,5	104,6	105,8	106,7	107,6	108,4	109,1	108,9	110,4	111,7	111,8	107,8
	%	+7,7	+7,7	+7,5	+6,9	+7,5	+7,9	+8,2	+7,8	+7,1	+8,1	+8,6	+8,4	+7,8
2002	Index	114,9	117,3	118,2	120,4	121,7	122,6	124,2	125,8	125,1	126,1
	%	+10,7	+12,2	+13,0	+13,8	+14,1	+13,9	+14,6	+15,3	+14,9	+14,2
Imported commodities														
2000	Index	+94,8	+95,1	+96,1	+97,6	+97,3	+99,2	100,1	102,2	101,6	103,4	105,7	107,2	100,0
	%	+13,1	+14,4	+14,7	+16,3	+13,5	+14,0	+14,0	+15,2	+13,3	+14,3	+14,9	+15,0	+14,4
2001	Index	107,2	106,9	107,9	108,5	108,8	109,1	109,3	110,0	110,9	112,6	113,5	115,6	110,0
	%	+13,1	+12,4	+12,3	+11,2	+11,8	+10,0	+9,2	+7,6	+9,2	+8,9	+7,4	+7,8	+10,0
2002	Index	122,0	123,6	125,9	127,4	127,4	126,5	127,7	127,2	129,4	130,2
	%	+13,8	+15,6	+16,7	+17,4	+17,1	+15,9	+16,8	+15,6	+16,7	+15,6

Table 2 - Contributions to the annual percentage change in the PPI for all commodities for consumption in South Africa according to their origin

Origin of contribution	Contribution at September 2002	Contribution at October 2002
Locally produced commodities	+10,8	+10,3
Imported commodities	+4,6	+4,3
All groups	+15,4	+14,6

Table 3 - Contributors to the monthly percentage change in the PPI for all commodities for consumption in South Africa according to their origin

Origin of contribution	Contribution at September 2002	Contribution at October 2002
Locally produced commodities	-0,4	+0,6
Imported commodities	+0,6	+0,1
All groups	+0,2	+0,7

Table 4 - Contributions to the annual percentage change in the PPI for all commodities for consumption in South Africa according to group

Group	Contribution at September 2002	Contribution at October 2002
Agriculture	+2,5	+2,2
Mining and quarrying	+1,0	+1,1
Food at manufacturing	+2,9	+2,7
Beverages	+0,3	+0,3
Textiles and made-up goods	+0,3	+0,3
Wearing apparel	+0,1	+0,1
Footwear	+0,1	+0,1
Wood and wood products	+0,2	+0,2
Paper, paper products and printing	+1,4	+1,4
Products of petroleum and coal	+0,4	+0,4
Chemicals and chemical products	+1,3	+1,3
Rubber and plastic products	+0,3	+0,3
Non-metallic mineral products	+0,3	+0,3
Basic metals	+0,6	+0,7
Metal products	+0,4	+0,3
Non-electrical machinery and equipment	+1,0	+1,0
Office, accounting and computing machinery	+0,1	+0,1
Electrical machinery and apparatus	+0,4	+0,4
Radio, TV, communication equipment and apparatus	+0,4	+0,4
Medical, precision and optical instruments	+0,2	+0,2
Transport equipment	+1,4	+1,3
Furniture	+0,1	+0,1
Other manufactures	+0,1	+0,1
Electricity	-0,6	-0,8
Gas steam and water	+0,1	0,0
All other groups	+0,1	+0,1
All groups	+15,4	+14,6

Table 5 - Contributions to the monthly percentage change in the PPI for all commodities for consumption in South Africa according to group

Group	Contribution at September 2002	Contribution at October 2002
Agriculture	+0,5	+0,1
Mining and quarrying	+0,3	+0,1
Food at manufacturing	+0,1	+0,1
Textiles and made-up goods	+0,1	0,0
Paper, paper products and printing	0,0	+0,2
Products of petroleum and coal	+0,1	+0,1
Chemicals and chemical products	0,0	+0,1
Transport equipment	0,0	+0,1
Electricity	-1,1	-0,2
All other groups	+0,2	+0,1
All groups	+0,2	+0,7

Table 6 - Contributors to the annual percentage change in the PPI for locally produced commodities according to group

Group	Contribution at September 2002	Contribution at October 2002
Agriculture	+3,2	+2,8
Mining and quarrying	+0,4	+0,4
Food at manufacturing	+3,8	+3,6
Beverages	+0,4	+0,4
Tobacco products	+0,1	+0,1
Textiles and made-up goods	+0,3	+0,3
Wearing apparel	+0,2	+0,2
Wood and wood products	+0,2	+0,2
Paper, paper products and printing	+1,6	+1,6
Products of petroleum and coal	+0,5	+0,5
Chemicals and chemical products	+0,9	+1,0
Rubber and plastic products	+0,3	+0,3
Non-metallic mineral products	+0,4	+0,4
Basic metals	+0,7	+0,7
Metal products	+0,3	+0,3
Non-electrical machinery and equipment	+0,3	+0,3
Electrical machinery and apparatus	+0,4	+0,4
Radio, TV, communication equipment and apparatus	+0,4	+0,4
Transport equipment	+1,0	+1,0
Furniture	+0,1	+0,1
Other manufactures	+0,1	+0,1
Electricity	-0,8	-1,1
Gas steam and water	+0,1	+0,1
All other groups	0,0	+0,1
All groups	+14,9	+14,2

Table 7 - Contributors to the monthly percentage change in the PPI for locally produced commodities according to group

Group	Contribution at September 2002	Contribution at October 2002
Agriculture	+0,6	+0,1
Mining and quarrying	0,0	0,0
Food at manufacturing	+0,2	+0,1
Textiles and made-up goods	+0,1	0,0
Paper, paper products and printing	0,0	+0,3
Products of petroleum and coal	+0,1	+0,1
Chemicals and chemical products	0,0	+0,2
Basic metals	0,0	+0,1
Electricity	-1,5	-0,2
All other groups	-0,1	+0,1
All groups	-0,6	+0,8

Table 8 - Contributors to the annual percentage change in the PPI for imported commodities according to group

Group	Contribution at September 2002	Contribution at October 2002
Agriculture	+0,6	+0,5
Mining and quarrying	+2,8	+2,9
Food at manufacturing	+0,6	+0,6
Beverages	+0,1	+0,1
Textiles and made-up goods	+0,2	+0,2
Leather and leather products	+0,1	+0,1
Footwear	+0,1	+0,1
Wood and wood products	+0,1	+0,1
Paper, paper products and printing	+0,7	+0,7
Chemicals and chemical products	+2,3	+2,3
Rubber and plastic products	+0,2	+0,2
Non-metallic mineral products	+0,3	+0,2
Basic metals	+0,5	+0,4
Metal products	+0,5	+0,4
Non-electrical machinery and equipment	+3,0	+2,8
Office, accounting and computing machinery	+0,3	+0,2
Electrical machinery and apparatus	+0,4	+0,3
Radio, TV, communication equipment and apparatus	+0,5	+0,3
Medical, precision and optical instruments	+0,6	+0,5
Transport equipment	+2,5	+2,3
Other manufactures	+0,2	+0,2
All other groups	+0,1	+0,2
All groups	+16,7	+15,6

Table 9 - Contributors to the monthly percentage change in the PPI for imported commodities according to group

Group	Contribution at September 2002	Contribution at October 2002
Agriculture	+0,1	0,0
Mining and quarrying	+1,2	+0,1
Food at manufacturing	0,0	+0,1
Paper, paper products and printing	0,0	+0,1
Chemicals and chemical products	+0,1	0,0
Metal products	+0,1	0,0
Non-electrical machinery and equipment	+0,1	+0,1
Transport equipment	+0,1	+0,2
All groups	+1,7	+0,6

Table 10 - Production Price Index for consumption in South Africa according to origin and group

Base : 2000 = 100

Origin/Group	Weight	Indices			% change between	
		Oct 2001	Sep 2002	Oct 2002	Sep 2002 and Oct 2002	Oct 2001 and Oct 2002
All groups	100,00	111,1	126,4	127,3	+0,7	+14,6
South African	73,00	110,4	125,1	126,1	+0,8	+14,2
Imported	27,00	112,6	129,4	130,2	+0,6	+15,6
1. Agriculture, Forestry, Fishing and Mining	15,22	114,8	138,1	139,1	+0,7	+21,2
1.1 Agriculture	7,68	120,4	151,0	152,0	+0,7	+26,2
1.1.1 Food	7,34	119,4	147,5	148,4	+0,6	+24,3
Grain	1,51	126,6	182,8	184,0	+0,7	+45,3
Sugar cane	0,38	132,0	138,1	138,0	-0,1	+4,5
Oil seeds	0,18	170,1	189,1	189,1	0,0	+11,2
Vegetables and dried beans	0,68	106,6	181,6	158,4	-12,8	+48,6
Fruit	0,68	137,2	125,2	130,8	+4,5	-4,7
Meat	2,37	115,7	140,3	146,9	+4,7	+27,0
Milk and eggs	0,96	113,3	122,0	123,3	+1,1	+8,8
Other	0,58	95,5	95,2	95,1	-0,1	-0,4
1.1.2 Other agriculture	0,34	134,2	195,9	198,0	+1,1	+47,5
1.2 Forestry	1,97	100,0	100,0	100,0	0,0	0,0
1.3 Fishing	0,12	110,8	136,0	136,8	+0,6	+23,5
1.4 Mining and quarrying	5,45	109,2	130,1	131,1	+0,8	+20,1
Coal	1,59	104,6	108,6	109,5	+0,8	+4,7
Metal ores	0,68	106,3	131,8	130,9	-0,7	+23,1
Other minerals	3,18	110,2	138,2	139,8	+1,2	+26,9
2. Manufacturing	80,28	110,6	126,0	127,2	+1,0	+15,0
South African	56,60	110,1	125,6	127,1	+1,2	+15,4
Imported	23,68	112,3	127,1	127,7	+0,5	+13,7
2.1 Food	10,16	112,1	140,5	142,1	+1,1	+26,8
Meat	1,79	115,6	149,8	154,5	+3,1	+33,7
Fresh meat	1,43	116,8	155,6	160,9	+3,4	+37,8
Meat products	0,36	110,8	123,5	125,1	+1,3	+12,9
Fish and fish products	0,19	124,9	147,2	146,7	-0,3	+17,5
Fruit and vegetable products	0,47	111,7	121,7	122,3	+0,5	+9,5
Fats and oils	0,84	115,4	134,5	137,0	+1,9	+18,7
Milk products	1,31	113,0	133,7	134,8	+0,8	+19,3
Grain mill products	1,82	105,4	153,5	154,0	+0,3	+46,1
Sugar	0,35	107,1	122,9	122,9	0,0	+14,8
Coffee and tea	0,23	108,9	126,2	126,5	+0,2	+16,2
Other	3,16	112,7	136,6	137,4	+0,6	+21,9
2.2 Beverages	3,26	108,0	117,6	118,6	+0,9	+9,8
Alcoholic	2,35	109,2	119,9	120,5	+0,5	+10,3
Non-alcoholic	0,91	104,9	111,3	113,8	+2,2	+8,5
2.3 Tobacco products	1,15	112,2	115,4	118,0	+2,3	+5,2
2.4 Textiles and made-up goods	2,39	107,3	120,2	120,3	+0,1	+12,1
Spinning, weaving and finishing of textiles	1,43	107,4	120,0	120,1	+0,1	+11,8
Other textiles	0,96	107,3	120,6	120,7	+0,1	+12,5
2.5 Wearing apparel	1,81	107,8	116,7	117,0	+0,3	+8,5
Knitted and crocheted fabrics and articles	0,42	108,3	119,6	119,6	0,0	+10,4
Wearing apparel	1,39	107,5	115,8	116,1	+0,3	+8,0
Men's and boys' clothing	0,56	104,7	116,4	116,9	+0,4	+11,7
Women's and girls' clothing	0,78	108,8	114,3	114,3	0,0	+5,1
Other, including articles of fur	0,05	115,6	129,7	133,0	+2,5	+15,1
2.6 Leather and leather products	0,29	116,7	131,9	134,8	+2,2	+15,5
2.7 Footwear	0,69	110,9	122,0	122,3	+0,2	+10,3
2.8 Wood and wood products	1,26	109,3	122,4	123,2	+0,7	+12,7
Sawmilling and planing of wood	0,44	101,9	109,1	109,8	+0,6	+7,8
Products of wood, cork and plaiting materials	0,82	113,2	129,4	130,4	+0,8	+15,2
2.9 Paper, paper products and printing	8,13	112,4	127,8	130,9	+2,4	+16,5

Paper and paper products	3,21	112,7	130,1	133,2	+2,4	+18,2
Publishing and printing	4,92	112,2	126,2	129,4	+2,5	+15,3
2.10 Products of petroleum and coal	2,75	119,8	131,2	135,9	+3,6	+13,4
2.11 Chemicals and chemical products	8,39	112,5	128,3	130,3	+1,6	+15,8
Basic chemicals	3,54	116,7	135,6	137,7	+1,5	+18,0
Fertilizers	0,45	111,7	131,3	132,8	+1,1	+18,9
Other basic chemicals	3,09	117,6	136,8	138,8	+1,5	+18,0
Compounded chemical products	4,85	109,2	122,7	124,6	+1,5	+14,1
Pharmaceutical products	1,47	107,0	116,8	118,6	+1,5	+10,8
Other compounded chemical products	3,38	110,1	125,1	127,2	+1,7	+15,5

Table 10 - Production Price Index for consumption in South Africa according to origin and group (concluded)

Base : 2000 = 100

Origin/Group	Weight	Indices			% - change between	
		Oct 2001	Sep 2002	Oct 2002	Sep 2002 and Oct 2002	Oct 2001 and Oct 2002
2.12 Rubber and plastic products	2,71	108,4	118,0	118,9	+0,8	+9,7
Rubber products	0,85	110,0	123,6	125,0	+1,1	+13,6
Plastic products	1,86	107,6	115,5	116,1	+0,5	+7,9
2.13 Non-metallic mineral products	2,25	111,5	127,9	128,6	+0,5	+15,3
Glass and glass products	0,61	110,5	122,9	123,0	+0,1	+11,3
Other	1,64	111,6	129,4	130,4	+0,8	+16,8
2.14 Basic metals	3,97	106,2	123,2	124,4	+1,0	+17,1
Ferrous	1,82	101,5	122,4	122,0	-0,3	+20,2
Non-ferrous	2,15	110,2	124,0	126,4	+1,9	+14,7
2.15 Metal products	3,18	108,2	119,8	119,7	-0,1	+10,6
Structural metal products	1,00	108,4	116,2	116,2	0,0	+7,2
Other	2,18	108,3	121,7	121,5	-0,2	+12,2
2.16 Non-electrical machinery and equipment	6,72	106,9	122,5	123,2	+0,6	+15,2
General purpose machinery	2,44	109,3	127,6	127,8	+0,2	+16,9
Special purpose machinery	3,69	108,4	121,2	122,3	+0,9	+12,8
Household appliances	0,59	109,1	124,8	124,7	-0,1	+14,3
2.17 Office, accounting and computing machinery	1,41	108,3	114,1	113,6	-0,4	+4,9
2.18 Electrical machinery and apparatus	2,48	106,5	122,9	122,9	0,0	+15,4
Electric motors, generators and transformers	0,34	106,2	114,9	114,7	-0,2	+8,0
Electricity distribution and control apparatus	0,75	101,9	123,2	123,2	0,0	+20,9
Insulated wire and cable	0,69	106,3	125,5	125,5	0,0	+18,1
Other	0,70	110,6	123,0	123,2	+0,2	+11,4
2.19 Radio, television and communication equipment and apparatus	2,70	107,9	122,5	122,5	0,0	+13,5
2.20 Medical, precision and optical instruments	1,18	110,5	125,0	125,2	+0,2	+13,3
Medical appliances and instruments for measuring, checking, testing and navigating	0,99	110,5	124,4	124,6	+0,2	+12,8
Other, including watches and clocks	0,19	109,5	127,0	127,7	+0,6	+16,6
2.21 Transport equipment	11,04	111,5	124,5	125,0	+0,4	+12,1
Motor vehicles, parts and accessories	10,50	111,8	124,8	125,4	+0,5	+12,2
Motor vehicles	5,43	107,3	119,3	119,3	0,0	+11,2
Bodies, trailers and semi-trailers	0,16	107,9	118,0	118,0	0,0	+9,4
Parts and accessories	4,91	116,4	130,6	131,9	+1,0	+13,3
Other transport equipment	0,54	106,2	118,3	118,1	-0,2	+11,2
2.22 Furniture	1,01	106,3	116,9	116,9	0,0	+10,0
2.23 Other manufactures	1,35	107,2	117,0	117,2	+0,2	+9,3
3. Electricity, Gas Steam and Water	4,50	104,4	91,7	86,7	-5,5	-17,0
3.1 Electricity	4,17	103,3	88,4	83,0	-6,1	-19,7
3.2 Gas, Steam and water	0,33	117,9	132,5	133,6	+0,8	+13,3

Table 11 - Production Price Index for total output of South African industry groups according to destination and group

Base : 2000 = 100

Origin/Group	Weight	Indices			% change between	
		Oct 2001	Sep 2002	Oct 2002	Sep 2002 and Oct 2002	Oct 2001 and Oct 2002
All groups	100,00	110,1	124,3	125,1	+0,6	+13,6
South African	75,88	110,1	124,3	125,1	+0,6	+13,6
Exported	24,12	109,3	122,1	122,4	+0,2	+12,0
1. Agriculture, Forestry, Fishing and Mining	19,69	113,9	131,3	132,0	+0,5	+15,9
1.1 Agriculture	8,55	118,7	148,1	149,4	+0,9	+25,9
1.1.1 Food	8,35	117,3	143,9	145,1	+0,8	+23,7
Grain	1,70	127,3	185,7	188,0	+1,2	+47,7
Sugar cane	0,40	132,0	138,1	138,0	-0,1	+4,5
Oil seeds	0,18	170,1	189,1	189,1	0,0	+11,2
Vegetables and dried beans	0,81	104,7	169,4	149,4	-11,8	+42,7
Fruit	1,20	114,6	103,8	107,4	+3,5	-6,3
Meat	2,48	115,4	140,0	146,6	+4,7	+27,0
Milk and eggs	1,00	113,4	122,0	123,3	+1,1	+8,7
Other	0,58	95,7	93,3	93,3	0,0	-2,5
1.1.2 Other agriculture	0,20	142,3	217,0	220,9	+1,8	+55,2
1.2 Forestry	2,06	100,0	100,0	100,0	0,0	0,0
1.3 Fishing	0,16	111,6	139,2	140,4	+0,9	+25,8
1.4 Mining and quarrying	8,92	112,2	121,8	122,1	+0,2	+8,8
Coal	3,22	123,3	126,3	126,9	+0,5	+2,9
Metal ores	3,64	107,5	120,5	120,8	+0,2	+12,4
Other minerals	2,06	102,9	116,7	116,8	+0,1	+13,5
2. Manufacturing	75,63	109,4	124,5	125,7	+1,0	+14,9
South African	58,83	110,1	125,6	127,1	+1,2	+15,4
Exported	16,80	107,5	121,1	121,3	+0,2	+12,8
2.1 Food	10,77	111,5	139,8	141,1	+0,9	+26,5
Meat	1,83	114,9	149,8	153,9	+2,7	+33,9
Fresh meat	1,34	116,5	156,3	161,4	+3,3	+38,5
Meat products	0,49	109,0	124,6	124,7	+0,1	+14,4
Fish and fish products	0,24	115,5	136,9	136,5	-0,3	+18,2
Fruit and vegetable products	0,77	107,7	120,3	120,6	+0,2	+12,0
Fats and oils	0,61	115,6	139,4	142,0	+1,9	+22,8
Milk products	1,35	112,7	133,7	134,7	+0,7	+19,5
Grain mill products	1,80	103,6	153,1	153,5	+0,3	+48,2
Sugar	0,70	124,2	140,3	141,0	+0,5	+13,5
Coffee and tea	0,24	109,2	126,6	126,8	+0,2	+16,1
Other	3,23	112,7	136,3	137,0	+0,5	+21,6
2.2 Beverages	3,58	108,0	117,2	118,4	+1,0	+9,6
Alcoholic	2,61	109,2	119,4	120,3	+0,8	+10,2
Non-alcoholic	0,97	104,8	111,0	113,5	+2,3	+8,3
2.3 Tobacco products	1,22	112,0	115,2	117,8	+2,3	+5,2
2.4 Textiles and made-up goods	2,26	107,5	123,8	123,8	0,0	+15,2
Spinning, weaving and finishing of textiles	1,37	108,7	127,9	127,9	0,0	+17,7
Other textiles	0,89	105,9	117,7	117,7	0,0	+11,1
2.5 Wearing apparel	1,83	107,3	117,0	117,1	+0,1	+9,1
Knitted and crocheted fabrics and articles	0,38	108,9	120,9	120,9	0,0	+11,0
Wearing apparel	1,45	106,9	116,0	116,2	+0,2	+8,7
Men's and boys' clothing	0,60	105,2	118,6	119,0	+0,3	+13,1
Women's and girls' clothing	0,80	107,7	113,2	113,2	0,0	+5,1
Other, including articles of fur	0,05	110,8	126,4	126,4	0,0	+14,1
2.6 Leather and leather products	0,33	113,5	122,6	128,7	+5,0	+13,4
2.7 Footwear	0,55	112,8	121,3	121,5	+0,2	+7,7
2.8 Wood and wood products	1,20	113,9	127,2	128,3	+0,9	+12,6
Sawmilling and planing of wood	0,36	116,7	128,6	129,3	+0,5	+10,8
Products of wood, cork and plaiting materials	0,84	112,4	126,5	127,8	+1,0	+13,7
2.9 Paper, paper products and printing	8,36	111,6	125,4	128,7	+2,6	+15,3
Paper and paper products	3,60	110,7	124,6	128,5	+3,1	+16,1
Publishing and printing	4,76	112,3	126,0	129,0	+2,4	+14,9
2.10 Products of petroleum and coal	3,27	120,4	137,6	141,0	+2,5	+17,1
2.11 Chemicals and chemical products	7,41	109,5	123,5	126,0	+2,0	+15,1
Basic chemicals	3,53	109,8	123,7	125,6	+1,5	+14,4
Fertilizers	0,59	108,5	123,4	124,6	+1,0	+14,8
Other basic chemicals	2,94	109,9	123,9	125,8	+1,5	+14,5
Compounded chemical products	3,88	109,1	123,1	126,3	+2,6	+15,8
Pharmaceutical products	0,88	109,7	119,0	122,5	+2,9	+11,7
Other compounded chemical products	3,00	108,9	124,3	127,4	+2,5	+17,0

Table 11 - Production Price Index for total output of South African industry groups according to destination and group (concluded)

Base : 2000 = 100

Origin/Group	Weight	Indices			% -change between	
		Oct 2001	Sep 2002	Oct 2002	Sep 2002 and Oct 2002	Oct 2001 and Oct 2002
2.12 Rubber and plastic products	2,48	110,1	119,8	121,4	+1,3	+10,3
Rubber products	0,75	115,1	130,8	133,3	+1,9	+15,8
Plastic products	1,73	107,8	114,9	116,0	+1,0	+7,6
2.13 Non-metallic mineral products	2,11	110,3	125,9	126,3	+0,3	+14,5
Glass and glass products	0,56	109,8	121,9	121,9	0,0	+11,0
Other	1,55	110,2	126,9	127,6	+0,6	+15,8
2.14 Basic metals	8,68	107,9	123,4	123,6	+0,2	+14,6
Ferrous	4,04	106,6	126,3	126,8	+0,4	+18,9
Non-ferrous	4,64	109,1	121,1	120,9	-0,2	+10,8
2.15 Metal products	3,23	106,7	117,0	117,0	0,0	+9,7
Structural metal products	1,24	108,8	118,1	118,1	0,0	+8,5
Other	1,99	105,5	116,3	116,3	0,0	+10,2
2.16 Non-electrical machinery and equipment	3,57	107,1	117,8	117,8	0,0	+10,0
General purpose machinery	1,26	104,7	115,6	115,6	0,0	+10,4
Special purpose machinery	1,96	105,1	116,7	116,7	0,0	+11,0
Household appliances	0,35	108,5	118,3	118,3	0,0	+9,0
2.17 Office, accounting and computing machinery	0,14	100,1	101,2	101,2	0,0	+1,1
2.18 Electrical machinery and apparatus	1,90	106,9	124,7	124,7	0,0	+16,7
Electric motors, generators and transformers	0,19	112,5	130,7	130,7	0,0	+16,2
Electricity distribution and control apparatus	0,45	101,2	128,1	128,1	0,0	+26,6
Insulated wire and cable	0,69	105,4	123,5	123,5	0,0	+17,2
Other	0,57	111,2	121,4	121,4	0,0	+9,2
2.19 Radio, television and communication equipment and apparatus	1,34	105,9	130,7	130,7	0,0	+23,4
2.20 Medical, precision and optical instruments	0,32	109,0	121,6	121,9	+0,2	+11,8
Medical appliances and instruments for measuring, checking, testing and navigating	0,28	109,2	122,2	122,5	+0,2	+12,2
Other, including watches and clocks	0,04	107,8	117,9	117,9	0,0	+9,4
2.21 Transport equipment	8,32	106,7	117,7	117,7	0,0	+10,3
Motor vehicles, parts and accessories	8,07	106,9	118,2	118,2	0,0	+10,6
Motor vehicles	5,31	107,5	119,8	119,8	0,0	+11,4
Bodies, trailers and semi-trailers	0,33	103,8	107,6	107,6	0,0	+3,7
Parts and accessories	2,43	106,0	116,1	116,1	0,0	+9,5
Other transport equipment	0,25	101,7	103,6	103,6	0,0	+1,9
2.22 Furniture	1,39	104,8	112,8	112,8	0,0	+7,6
2.23 Other manufactures	1,37	105,9	112,8	112,8	0,0	+6,5
3. Electricity, Gas Steam and Water	4,68	104,4	91,7	86,7	-5,5	-17,0
3.1 Electricity	4,35	103,3	88,4	83,0	-6,1	-19,7
3.2 Gas, Steam and water	0,33	117,9	132,5	133,6	+0,8	+13,3

Table 12 - Production Price Index for output of South African industry groups for South African consumption according to group

Base : 2000 = 100

Origin/Group	Weight	Indices			% change between	
		Oct 2001	Sep 2002	Oct 2002	Sep 2002 and Oct 2002	Oct 2001 and Oct 2002
All groups	100,00	110,4	125,1	126,1	+0,8	+14,2
South African	100,00	110,4	125,1	126,1	+0,8	+14,2
Exported	-	-	-	-	-	-
1. Agriculture, Forestry, Fishing and Mining	16,29	114,2	135,3	136,0	+0,5	+19,1
1.1 Agriculture	9,67	121,4	152,2	153,3	+0,7	+26,3
1.1.1 Food	9,44	119,8	147,9	148,9	+0,7	+24,3
Grain	1,59	129,4	192,0	194,1	+1,1	+50,0
Sugar cane	0,52	132,0	138,1	138,0	-0,1	+4,5
Oil seeds	0,24	170,1	189,1	189,1	0,0	+11,2
Vegetables and dried beans	0,93	106,6	181,6	158,4	-12,8	+48,6
Fruit	0,91	137,6	124,6	130,4	+4,7	-5,2
Meat	3,23	115,7	140,5	147,2	+4,8	+27,2
Milk and eggs	1,32	113,3	122,0	123,3	+1,1	+8,8
Other	0,70	95,7	93,3	93,3	0,0	-2,5
1.1.2 Other agriculture	0,23	148,2	225,7	228,5	+1,2	+54,2
1.2 Forestry	2,67	100,0	100,0	100,0	0,0	0,0
1.3 Fishing	0,16	110,9	136,5	137,4	+0,7	+23,9
1.4 Mining and quarrying	3,79	105,5	116,2	116,5	+0,3	+10,4
Coal	2,09	104,8	109,0	109,9	+0,8	+4,9
Metal ores	0,88	106,6	133,3	132,4	-0,7	+24,2
Other minerals	0,82	106,8	117,0	116,9	-0,1	+9,5
2. Manufacturing	77,54	110,1	125,6	127,1	+1,2	+15,4
South African	77,54	110,1	125,6	127,1	+1,2	+15,4
Exported	-	-	-	-	-	-
2.1 Food	12,44	111,7	141,9	143,3	+1,0	+28,3
Meat	2,20	115,9	152,9	157,3	+2,9	+35,7
Fresh meat	1,85	117,0	158,2	163,4	+3,3	+39,7
Meat products	0,35	109,4	124,2	124,4	+0,2	+13,7
Fish and fish products	0,10	128,2	176,4	176,4	0,0	+37,6
Fruit and vegetable products	0,57	110,8	121,4	121,9	+0,4	+10,0
Fats and oils	0,72	115,6	140,4	142,8	+1,7	+23,5
Milk products	1,72	113,0	134,4	135,5	+0,8	+19,9
Grain mill products	2,25	103,6	153,9	154,3	+0,3	+48,9
Sugar	0,48	107,1	122,8	122,8	0,0	+14,7
Coffee and tea	0,31	109,3	126,6	126,8	+0,2	+16,0
Other	4,09	113,0	137,0	137,7	+0,5	+21,9
2.2 Beverages	4,21	108,1	117,2	118,3	+0,9	+9,4
Alcoholic	2,98	109,4	119,6	120,1	+0,4	+9,8
Non-alcoholic	1,23	105,0	111,3	113,9	+2,3	+8,5
2.3 Tobacco products	1,55	112,1	115,3	117,9	+2,3	+5,2
2.4 Textiles and made-up goods	2,52	107,2	120,6	120,6	0,0	+12,5
Spinning, weaving and finishing of textiles	1,49	107,8	122,1	122,1	0,0	+13,3
Other textiles	1,03	106,2	118,3	118,3	0,0	+11,4
2.5 Wearing apparel	2,19	107,5	116,9	117,1	+0,2	+8,9
Knitted and crocheted fabrics and articles	0,46	109,6	121,5	121,5	0,0	+10,9
Wearing apparel	1,73	107,2	115,9	116,1	+0,2	+8,3
Men's and boys' clothing	0,67	104,9	117,6	118,1	+0,4	+12,6
Women's and girls' clothing	1,00	108,2	113,8	113,8	0,0	+5,2
Other, including articles of fur	0,06	112,3	130,0	130,0	0,0	+15,8
2.6 Leather and leather products	0,21	115,3	123,3	129,1	+4,7	+12,0
2.7 Footwear	0,68	113,1	120,9	121,1	+0,2	+7,1
2.8 Wood and wood products	1,46	109,5	122,5	123,4	+0,7	+12,7
Sawmilling and planing of wood	0,46	102,5	111,7	112,6	+0,8	+9,9
Products of wood, cork and plaiting materials	1,00	112,8	127,6	128,5	+0,7	+13,9
2.9 Paper, paper products and printing	9,82	112,4	127,2	130,4	+2,5	+16,0
Paper and paper products	3,70	112,0	128,2	131,7	+2,7	+17,6
Publishing and printing	6,12	112,6	126,6	129,6	+2,4	+15,1
2.10 Products of petroleum and coal	3,29	121,8	134,8	140,1	+3,9	+15,0
2.11 Chemicals and chemical products	6,76	110,7	123,8	127,1	+2,7	+14,8
Basic chemicals	2,52	113,4	124,2	127,1	+2,3	+12,1
Fertilizers	0,49	108,7	127,8	129,9	+1,6	+19,5
Other basic chemicals	2,03	114,7	123,1	126,3	+2,6	+10,1
Compounded chemical products	4,24	108,9	123,3	126,9	+2,9	+16,5
Pharmaceutical products	1,05	108,3	118,5	122,0	+3,0	+12,7
Other compounded chemical products	3,19	109,1	124,9	128,5	+2,9	+17,8

Table 12 - Production Price Index for output of South African industry groups for South African consumption according to group (concluded)

Base : 2000 = 100

Origin/Group	Weight	Indices			% -change between	
		Oct 2001	Sep 2002	Oct 2002	Sep 2002 and Oct 2002	Oct 2001 and Oct 2002
2.12 Rubber and plastic products	2,95	109,7	119,3	120,4	+0,9	+9,8
Rubber products	0,83	113,3	128,3	130,3	+1,6	+15,0
Plastic products	2,12	108,4	115,9	116,7	+0,7	+7,7
2.13 Non-metallic mineral products	2,50	110,9	127,4	127,9	+0,4	+15,3
Glass and glass products	0,66	110,0	122,6	122,6	0,0	+11,5
Other	1,84	110,9	128,8	129,5	+0,5	+16,8
2.14 Basic metals	4,20	106,4	124,2	126,0	+1,4	+18,4
Ferrous	1,90	100,1	122,6	122,6	0,0	+22,5
Non-ferrous	2,30	111,8	125,8	129,0	+2,5	+15,4
2.15 Metal products	3,58	106,9	115,9	115,9	0,0	+8,4
Structural metal products	1,31	108,6	116,9	116,9	0,0	+7,6
Other	2,27	105,8	115,1	115,1	0,0	+8,8
2.16 Non-electrical machinery and equipment	2,94	105,6	116,1	116,1	0,0	+9,9
General purpose machinery	0,94	105,4	115,8	115,8	0,0	+9,9
Special purpose machinery	1,60	105,2	115,5	115,5	0,0	+9,8
Household appliances	0,40	108,7	119,9	119,9	0,0	+10,3
2.17 Office, accounting and computing machinery	0,02	102,2	114,2	114,2	0,0	+11,7
2.18 Electrical machinery and apparatus	2,15	107,1	126,4	126,4	0,0	+18,0
Electric motors, generators and transformers	0,20	113,5	132,1	132,1	0,0	+16,4
Electricity distribution and control apparatus	0,52	100,8	130,1	130,1	0,0	+29,1
Insulated wire and cable	0,86	104,7	123,3	123,3	0,0	+17,8
Other	0,57	113,9	125,0	125,0	0,0	+9,7
2.19 Radio, television and communication equipment and apparatus	1,58	106,3	133,6	133,6	0,0	+25,7
2.20 Medical, precision and optical instruments	0,25	107,7	116,2	116,7	+0,4	+8,4
Medical appliances and instruments for measuring, checking, testing and navigating	0,22	107,4	115,1	115,6	+0,4	+7,6
Other, including watches and clocks	0,03	109,8	125,3	125,3	0,0	+14,1
2.21 Transport equipment	9,60	107,4	118,8	118,8	0,0	+10,6
Motor vehicles, parts and accessories	9,55	107,4	118,7	118,7	0,0	+10,5
Motor vehicles	6,62	107,9	120,9	120,9	0,0	+12,0
Bodies, trailers and semi-trailers	0,17	108,6	118,3	118,3	0,0	+8,9
Parts and accessories	2,76	106,0	113,5	113,5	0,0	+7,1
Other transport equipment	0,05	101,2	105,0	105,0	0,0	+3,8
2.22 Furniture	1,27	106,8	118,4	118,4	0,0	+10,9
2.23 Other manufactures	1,37	106,8	115,5	115,5	0,0	+8,1
3. Electricity, Gas Steam and Water	6,17	104,3	91,6	86,7	-5,3	-16,9
3.1 Electricity	5,72	103,3	88,4	83,0	-6,1	-19,7
3.2 Gas, Steam and water	0,45	117,9	132,5	133,6	+0,8	+13,3

Table 13 - Production Price Index for imported commodities according to group

Base : 2000 = 100

Origin/Group	Weight	Indices			% change between	
		Oct 2001	Sep 2002	Oct 2002	Sep 2002 and Oct 2002	Oct 2001 and Oct 2002
All groups	100,00	112,6	129,4	130,2	+0,6	+15,6
1. Agriculture, Forestry, Fishing and Mining	12,27	110,3	140,6	142,0	+1,0	+28,7
1.1 Agriculture	2,27	110,0	138,1	137,2	-0,7	+24,7
1.1.1 Food	1,66	113,6	143,2	141,8	-1,0	+24,8
Grain	1,30	117,5	152,2	150,5	-1,1	+28,1
Sugar cane	-	-	-	-	-	-
Oil seeds	-	-	-	-	-	-
Vegetables and dried beans	-	-	-	-	-	-
Fruit	0,06	109,1	137,1	137,1	0,0	+25,7
Meat	0,05	104,2	104,2	104,2	0,0	0,0
Milk and eggs	-	-	-	-	-	-
Other	0,25	95,1	103,9	103,6	-0,3	+8,9
1.1.2 Other agriculture	0,61	100,5	124,8	125,3	+0,4	+24,7
1.2 Forestry	0,05	100,0	100,0	100,0	0,0	0,0
1.3 Fishing	0,01	100,8	107,4	107,4	0,0	+6,5
1.4 Mining and quarrying	9,94	110,0	140,9	142,8	+1,3	+29,8
Coal	0,26	100,2	100,3	100,3	0,0	+0,1
Metal ores	0,12	98,2	99,1	99,1	0,0	+0,9
Other minerals	9,56	110,1	142,1	144,1	+1,4	+30,9
2. Manufacturing	87,73	112,3	127,1	127,7	+0,5	+13,7
2.1 Food	3,96	117,1	130,8	133,3	+1,9	+13,8
Meat	0,67	116,5	126,8	133,6	+5,4	+14,7
Fresh meat	0,46	115,2	128,8	135,0	+4,8	+17,2
Meat products	0,21	119,7	122,5	130,6	+6,6	+9,1
Fish and fish products	0,44	122,3	128,8	128,0	-0,6	+4,7
Fruit and vegetable products	0,18	118,5	122,6	124,0	+1,1	+4,6
Fats and oils	1,16	116,3	125,8	128,4	+2,1	+10,4
Milk products	0,21	115,2	120,8	121,2	+0,3	+5,2
Grain mill products	0,65	120,5	147,3	148,3	+0,7	+23,1
Sugar	0,01	104,7	148,5	148,5	0,0	+41,8
Coffee and tea	0,03	99,3	115,8	116,6	+0,7	+17,4
Other	0,61	108,3	130,2	132,2	+1,5	+22,1
2.2 Beverages	0,66	105,4	122,3	122,3	0,0	+16,0
Alcoholic	0,64	105,7	123,0	123,0	0,0	+16,4
Non-alcoholic	0,02	96,7	103,3	103,3	0,0	+6,8
2.3 Tobacco products	0,04	115,9	116,8	116,8	0,0	+0,8
2.4 Textiles and made-up goods	2,03	108,1	119,3	119,7	+0,3	+10,7
Spinning, weaving and finishing of textiles	1,28	106,1	113,3	113,9	+0,5	+7,4
Other textiles	0,75	111,4	129,2	129,3	+0,1	+16,1
2.5 Wearing apparel	0,78	108,8	114,3	115,3	+0,9	+6,0
Knitted and crocheted fabrics and articles	0,30	104,1	112,8	112,8	0,0	+8,4
Wearing apparel	0,48	111,9	115,3	117,1	+1,6	+4,6
Men's and boys' clothing	0,24	103,3	107,1	107,8	+0,7	+4,4
Women's and girls' clothing	0,20	118,9	122,6	122,7	+0,1	+3,2
Other, including articles of fur	0,04	126,4	126,2	142,0	+12,5	+12,3
2.6 Leather and leather products	0,51	118,5	141,8	141,3	-0,4	+19,2
2.7 Footwear	0,73	104,7	124,1	124,8	+0,6	+19,2
2.8 Wood and wood products	0,71	108,1	121,6	122,3	+0,6	+13,1
Sawmilling and planing of wood	0,38	100,0	100,3	100,3	0,0	+0,3
Products of wood, cork and plaiting materials	0,33	116,3	144,4	145,9	+1,0	+25,5
2.9 Paper, paper products and printing	3,57	112,4	131,9	134,1	+1,7	+19,3
Paper and paper products	1,88	116,1	141,0	141,4	+0,3	+21,8
Publishing and printing	1,69	108,8	122,9	127,0	+3,3	+16,7
2.10 Products of petroleum and coal	1,32	101,0	101,5	101,5	0,0	+0,5
2.11 Chemicals and chemical products	12,81	115,0	134,7	134,8	+0,1	+17,2
Basic chemicals	6,30	120,3	148,3	149,4	+0,7	+24,2
Fertilizers	0,32	125,2	146,6	146,0	-0,4	+16,6
Other basic chemicals	5,98	120,0	148,4	149,5	+0,7	+24,6
Compounded chemical products	6,51	109,7	121,4	120,6	-0,7	+9,9
Pharmaceutical products	2,60	105,7	115,1	115,1	0,0	+8,9
Other compounded chemical products	3,91	112,4	125,7	124,3	-1,1	+10,6

Table 13 - Production Price Index for imported commodities according to group (concluded)

Base : 2000 = 100

Origin/Group	Weight	Indices			% - change between	
		Oct 2001	Sep 2002	Oct 2002	Sep 2002 and Oct 2002	Oct 2001 and Oct 2002
2.12 Rubber and plastic products	2,07	103,2	113,3	113,2	-0,1	+9,7
Rubber products	0,92	102,1	112,6	112,4	-0,2	+10,1
Plastic products	1,15	104,0	113,8	113,8	0,0	+9,4
2.13 Non-metallic mineral products	1,57	113,4	129,1	130,8	+1,3	+15,3
Glass and glass products	0,47	112,1	123,4	124,0	+0,5	+10,6
Other	1,10	114,1	131,6	133,8	+1,7	+17,3
2.14 Basic metals	3,35	105,1	119,3	118,5	-0,7	+12,7
Ferrous	1,60	105,7	121,3	119,8	-1,2	+13,3
Non-ferrous	1,75	104,3	117,1	116,9	-0,2	+12,1
2.15 Metal products	2,09	114,0	138,2	137,5	-0,5	+20,6
Structural metal products	0,18	103,7	103,7	103,7	0,0	0,0
Other	1,91	114,9	141,4	140,6	-0,6	+22,4
2.16 Non-electrical machinery and equipment	17,02	110,3	127,6	128,5	+0,7	+16,5
General purpose machinery	6,50	110,9	132,4	132,6	+0,2	+19,6
Special purpose machinery	9,36	109,9	123,9	125,5	+1,3	+14,2
Household appliances	1,16	109,5	129,2	129,1	-0,1	+17,9
2.17 Office, accounting and computing machinery	5,18	108,4	114,1	113,6	-0,4	+4,8
2.18 Electrical machinery and apparatus	3,41	105,0	116,3	116,4	+0,1	+10,9
Electric motors, generators and transformers	0,73	100,3	101,8	101,4	-0,4	+1,1
Electricity distribution and control apparatus	1,23	103,5	115,4	115,4	0,0	+11,5
Insulated wire and cable	0,22	124,4	150,4	150,4	0,0	+20,9
Other	1,23	105,8	119,7	120,1	+0,3	+13,5
2.19 Radio, television and communication equipment and apparatus	5,73	109,3	114,5	114,5	0,0	+4,8
2.20 Medical, precision and optical instruments	3,67	110,9	126,5	126,6	+0,1	+14,2
Medical appliances and instruments for measuring, checking, testing and navigating	3,05	111,2	126,3	126,4	+0,1	+13,7
Other, including watches and clocks	0,62	109,5	127,2	128,0	+0,6	+16,9
2.21 Transport equipment	14,93	117,5	133,1	134,6	+1,1	+14,6
Motor vehicles, parts and accessories	13,08	118,6	134,6	136,4	+1,3	+15,0
Motor vehicles	2,22	102,9	106,9	106,9	0,0	+3,9
Bodies, trailers and semi-trailers	0,15	105,8	117,0	117,0	0,0	+10,6
Parts and accessories	10,71	121,2	139,7	141,9	+1,6	+17,1
Other transport equipment	1,85	106,7	119,4	119,2	-0,2	+11,7
2.22 Furniture	0,31	100,3	100,7	100,7	0,0	+0,4
2.23 Other manufactures	1,28	108,2	121,1	121,9	+0,7	+12,7
3. Electricity, Gas Steam and Water	-	-	-	-	-	-
3.1 Electricity	-	-	-	-	-	-
3.2 Gas, Steam and water	-	-	-	-	-	-

Table 14 - Production Price Index for exported commodities according to group

Base : 2000 = 100

Origin/Group	Weight	Indices			% change between	
		Oct 2001	Sep 2002	Oct 2002	Sep 2002 and Oct 2002	Oct 2001 and Oct 2002
All groups	100,00	109,3	122,1	122,4	+0,2	+12,0
1. Agriculture, Forestry, Fishing and Mining	30,30	113,3	124,4	125,0	+0,5	+10,3
1.1 Agriculture	5,00	100,5	121,3	123,2	+1,6	+22,6
1.1.1 Food	4,89	99,6	117,5	118,9	+1,2	+19,4
Grain	2,03	121,8	169,4	172,1	+1,6	+41,3
Sugar cane	-	-	-	-	-	-
Oil seeds	-	-	-	-	-	-
Vegetables and dried beans	0,44	100,0	100,0	100,0	0,0	0,0
Fruit	2,08	74,4	67,3	67,7	+0,6	-9,0
Meat	0,11	82,2	86,5	87,3	+0,9	+6,2
Milk and eggs	0,01	103,6	110,7	110,7	0,0	+6,9
Other	0,22	-	-	-	-	-
1.1.2 Other agriculture	0,11	110,8	170,8	180,5	+5,7	+62,9
1.2 Forestry	0,11	100,0	100,0	100,0	0,0	0,0
1.3 Fishing	0,18	113,4	146,7	148,7	+1,4	+31,1
1.4 Mining and quarrying	25,01	115,4	124,4	124,8	+0,3	+8,1
Coal	6,79	142,0	143,8	144,0	+0,1	+1,4
Metal ores	12,26	107,8	117,8	118,3	+0,4	+9,7
Other minerals	5,96	101,4	116,8	116,9	+0,1	+15,3
2. Manufacturing	69,70	107,5	121,1	121,3	+0,2	+12,8
2.1 Food	5,40	110,5	124,6	125,2	+0,5	+13,3
Meat	0,62	106,6	119,6	119,7	+0,1	+12,3
Fresh meat	0,20	103,9	108,7	108,7	0,0	+4,6
Meat products	0,42	107,7	125,3	125,5	+0,2	+16,5
Fish and fish products	0,69	109,5	118,5	118,0	-0,4	+7,8
Fruit and vegetable products	1,41	104,1	119,0	119,2	+0,2	+14,5
Fats and oils	0,24	116,1	130,2	134,9	+3,6	+16,2
Milk products	0,19	108,3	118,6	118,9	+0,3	+9,8
Grain mill products	0,36	102,7	130,5	130,5	0,0	+27,1
Sugar	1,38	150,9	167,4	169,4	+1,2	+12,3
Coffee and tea	0,03	104,2	123,9	123,9	0,0	+18,9
Other	0,48	104,2	117,9	118,8	+0,8	+14,0
2.2 Beverages	1,57	107,4	117,2	119,6	+2,0	+11,4
Alcoholic	1,44	107,9	118,7	121,2	+2,1	+12,3
Non-alcoholic	0,13	100,2	100,6	100,8	+0,2	+0,6
2.3 Tobacco products	0,16	106,8	112,9	112,9	0,0	+5,7
2.4 Textiles and made-up goods	1,38	109,8	143,1	143,1	0,0	+30,3
Spinning, weaving and finishing of textiles	0,96	112,6	156,1	156,1	0,0	+38,6
Other textiles	0,42	103,2	112,8	112,8	0,0	+9,3
2.5 Wearing apparel	0,65	104,7	117,7	117,7	0,0	+12,4
Knitted and crocheted fabrics and articles	0,13	103,2	116,5	116,5	0,0	+12,9
Wearing apparel	0,52	105,1	118,1	118,1	0,0	+12,4
Men's and boys' clothing	0,33	107,9	127,2	127,2	0,0	+17,9
Women's and girls' clothing	0,16	107,9	127,2	127,2	0,0	+17,9
Other, including articles of fur	0,03	100,1	101,4	101,4	0,0	+1,3
2.6 Leather and leather products	0,69	111,7	121,9	128,2	+5,2	+14,8
2.7 Footwear	0,12	106,9	127,7	127,7	0,0	+19,5
2.8 Wood and wood products	0,84	138,4	153,1	155,1	+1,3	+12,1
Sawmilling and planing of wood	0,53	156,4	175,5	175,5	0,0	+12,2
Products of wood, cork and plaiting materials	0,31	108,0	115,2	120,6	+4,7	+11,7
2.9 Paper, paper products and printing	3,70	105,2	110,5	115,0	+4,1	+9,3
Paper and paper products	3,24	105,8	111,8	117,0	+4,7	+10,6
Publishing and printing	0,46	101,3	102,3	102,3	0,0	+1,0
2.10 Products of petroleum and coal	3,20	110,5	140,4	137,5	-2,1	+24,4
2.11 Chemicals and chemical products	9,41	106,7	122,8	123,7	+0,7	+15,9
Basic chemicals	6,68	105,1	122,7	123,3	+0,5	+17,3
Fertilizers	0,91	107,6	115,1	115,1	0,0	+7,0
Other basic chemicals	5,77	104,7	123,9	124,6	+0,6	+19,0
Compounded chemical products	2,73	110,2	122,4	124,0	+1,3	+12,5
Pharmaceutical products	0,36	124,4	125,8	129,8	+3,2	+4,3
Other compounded chemical products	2,37	108,4	122,3	123,5	+1,0	+13,9

Table 14 - Production Price Index for exported commodities according to group (concluded)

Base : 2000 = 100

Origin/Group	Weight	Indices			% - change between	
		Oct 2001	Sep 2002	Oct 2002	Sep 2002 and Oct 2002	Oct 2001 and Oct 2002
2.12 Rubber and plastic products	1,02	113,9	124,9	130,2	+4,2	+14,3
Rubber products	0,51	125,0	144,4	149,4	+3,5	+19,5
Plastic products	0,51	102,0	104,4	110,2	+5,6	+8,0
2.13 Non-metallic mineral products	0,87	104,9	111,9	111,9	0,0	+6,7
Glass and glass products	0,23	108,5	115,7	115,6	-0,1	+6,5
Other	0,64	103,7	110,6	110,7	+0,1	+6,8
2.14 Basic metals	22,75	108,7	122,9	122,1	-0,7	+12,3
Ferrous	10,75	110,0	127,9	128,8	+0,7	+17,1
Non-ferrous	12,00	107,5	118,4	116,1	-1,9	+8,0
2.15 Metal products	2,09	106,0	123,3	123,3	0,0	+16,3
Structural metal products	1,02	108,4	122,0	122,0	0,0	+12,5
Other	1,07	103,1	123,8	123,8	0,0	+20,1
2.16 Non-electrical machinery and equipment	5,61	104,5	116,9	116,9	0,0	+11,9
General purpose machinery	2,25	103,9	115,5	115,5	0,0	+11,2
Special purpose machinery	3,09	104,9	118,6	118,6	0,0	+13,1
Household appliances	0,27	107,1	111,1	111,1	0,0	+3,7
2.17 Office, accounting and computing machinery	0,52	100,0	100,0	100,0	0,0	0,0
2.18 Electrical machinery and apparatus	1,13	104,7	114,0	114,0	0,0	+8,9
Electric motors, generators and transformers	0,17	108,5	125,4	125,4	0,0	+15,6
Electricity distribution and control apparatus	0,23	103,2	112,7	112,7	0,0	+9,2
Insulated wire and cable	0,15	116,8	124,8	124,8	0,0	+6,8
Other	0,58	101,4	108,6	108,6	0,0	+7,1
2.19 Radio, television and communication equipment and apparatus	0,64	102,3	106,5	106,5	0,0	+4,1
2.20 Medical, precision and optical instruments	0,54	111,2	129,8	129,8	0,0	+16,7
Medical appliances and instruments for measuring, checking, testing and navigating	0,46	112,2	133,3	133,3	0,0	+18,8
Other, including watches and clocks	0,08	104,9	109,4	109,5	+0,1	+4,4
2.21 Transport equipment	4,26	102,2	111,0	111,0	0,0	+8,6
Motor vehicles, parts and accessories	3,40	102,2	112,9	112,9	0,0	+10,5
Motor vehicles	1,16	100,0	101,0	101,0	0,0	+1,0
Bodies, trailers and semi-trailers	0,86	100,5	100,6	100,6	0,0	+0,1
Parts and accessories	1,38	105,1	130,9	130,9	0,0	+24,5
Other transport equipment	0,86	102,1	103,5	103,5	0,0	+1,4
2.22 Furniture	1,78	99,8	99,9	99,9	0,0	+0,1
2.23 Other manufactures	1,37	103,0	104,2	104,2	0,0	+1,2
3. Electricity, Gas Steam and Water	-	-	-	-	-	-
3.1 Electricity	-	-	-	-	-	-
3.2 Gas, Steam and water	-	-	-	-	-	-

Table 15 - Production Price Index for materials used in certain industries

Base : 2000 = 100

Industry	Indices			% -change between	
	Oct 2001	Sep 2002	Oct 2002	Sep 2002 and Oct 2002	Oct 2001 and Oct 2002
Building and construction	109,7	124,9	127,1	+1,8	+15,9
Building industries	108,1	123,9	125,5	+1,3	+16,1
Civil engineering	108,8	120,9	125,2	+3,6	+15,1
Mechanical engineering	105,8	122,6	122,9	+0,2	+16,2
Electrical engineering	109,0	125,5	126,7	+1,0	+16,2

Table 16 - Production Price Index for selected materials

Base : 2000 = 100

Type of materials	Indices			% -change between	
	Oct 2001	Sep 2002	Oct 2002	Sep 2002 and Oct 2002	Oct 2001 and Oct 2002
Wool, auction prices, 18 types	114,0	241,2	250,4	+3,8	119,6
Coal, bituminous	104,5	108,6	109,5	+0,8	+4,8
Coal, bituminous - for local sales	128,1	144,4	149,8	+3,7	+16,9
- Cobbles, grade A	162,1	157,1	155,3	-1,1	-4,2
- Cobbles, grade B	193,6	163,9	160,1	-2,3	-17,3
- Large nuts, grade A	118,9	138,3	140,4	+1,5	+18,1
- Large nuts, grade B	124,6	150,0	149,9	-0,1	+20,3
- Small nuts, grade A	127,2	163,2	171,9	+5,3	+35,1
- Small nuts, grade B	136,9	154,0	153,8	-0,1	+12,3
- Peas, grade A	125,6	142,6	146,4	+2,7	+16,6
- Peas, grade B	122,5	138,7	138,7	0,0	+13,2
Anthracite - for local sales					
- Grade SP	100,9	100,9	100,9	0,0	0,0
- Grade A	100,7	100,7	100,7	0,0	0,0
Wood products, excluding minewood	106,0	118,7	119,6	+0,8	+12,8
SA Pine, kiln dried	114,4	146,1	149,4	+2,3	+30,6
Paper, newsprint	111,7	146,4	146,4	0,0	+31,1
Kraft paper	115,1	141,5	141,7	+0,1	+23,1
Boxes, corrugated cardboard	114,5	127,5	127,5	0,0	+11,4
Leather, bovine hide	135,2	160,0	162,1	+1,3	+19,9
Rubber crude	104,3	114,9	115,5	+0,5	+10,7
- Natural	100,0	100,0	100,0	0,0	0,0
- Synthetic	108,4	129,6	130,8	+0,9	+20,7
- Synthetic - Local	108,4	129,6	130,8	+0,9	+20,7
Tyres and tubes	111,5	125,6	126,8	+1,0	+13,7
Plastic bottles	111,0	133,3	133,3	0,0	+20,1
Plastic, bulk forms	116,4	131,5	134,4	+2,2	+15,5
Sulphuric acid	104,5	114,2	114,2	0,0	+9,3
Glycerine	100,0	100,0	100,0	0,0	0,0
Paints	110,8	132,8	139,9	+5,3	+26,3
Foam insulation materials	112,9	136,6	136,6	0,0	+21,0
- Polyurethane	112,9	136,6	136,6	0,0	+21,0
Petro-chemical building materials	111,9	123,8	125,8	+1,6	+12,4
Waterproofing	114,9	130,7	137,9	+5,5	+20,0
Resilient floor coverings	116,3	147,4	148,5	+0,7	+27,7
Petrol, 93 octane - Coast	118,2	129,1	132,4	+2,6	+12,0
- Witwatersrand	118,2	129,1	132,4	+2,6	+12,0
Diesel oil - Coast	118,3	131,0	140,4	+7,2	+18,7
- Witwatersrand	118,3	131,0	140,4	+7,2	+18,7
Transformer oil	124,9	164,3	166,3	+1,2	+33,1
Bitumen	114,6	137,2	140,3	+2,3	+22,4
Modified Bitumen sheeting	105,7	120,6	123,6	+2,5	+16,9
Bitumen and Acrylic Emulsion	109,0	122,1	122,1	0,0	+12,0
Tar	114,5	127,7	132,1	+3,4	+15,4
Bricks - Stock	112,2	125,6	127,4	+1,4	+13,5
- Face	110,9	123,3	124,9	+1,3	+12,6
Cement building blocks	103,8	148,6	148,6	0,0	+43,2
Sand	109,0	114,9	114,9	0,0	+5,4
Aggregated crushed stone	105,4	118,2	118,2	0,0	+12,1
Ordinary and extended cement	116,0	129,9	133,0	+2,4	+14,7
Natural stone, cut and sawn	106,7	108,2	108,2	0,0	+1,4
Glass, for building industry	125,4	144,7	144,7	0,0	+15,4
Gypsum board	114,8	129,5	129,5	0,0	+12,8
Drop in ceiling tiles-gypsum	109,5	123,6	123,6	0,0	+12,9
Drop in ceiling tiles-masonry	105,9	136,1	136,1	0,0	+28,5
Profiled aluminium roofing	114,6	145,4	146,1	+0,5	+27,5
Extruded aluminium section	110,8	151,1	151,1	0,0	+36,4

Table 16 - Production Price Index for selected materials (concluded)

Base : 2000 = 100

Type of materials	Indices			% -change between	
	Oct 2001	Sep 2002	Oct 2002	Sep 2002 and Oct 2002	Oct 2001 and Oct 2002
Ironmongery	109,5	122,6	123,6	+0,8	+12,9
Self-Adhesive sheeting	113,0	118,6	118,6	0,0	+5,0
Joint Sealants	113,0	124,0	124,0	0,0	+9,7
Flush doors	105,1	117,9	117,9	0,0	+12,2
Drainage	110,2	114,3	115,0	+0,6	+4,4
Plumbing	103,8	111,4	112,3	+0,8	+8,2
Ceramic and encaustic wall and floor tiles and mosaics	102,9	104,8	104,8	0,0	+1,8
Ceiling materials	112,7	134,9	134,9	0,0	+19,7
Partitioning materials	112,7	134,9	134,9	0,0	+19,7
Fibrous insulation - Preformed pipe sections	104,0	110,2	110,2	0,0	+6,0
- Batten board	109,7	120,4	120,4	0,0	+9,8
- Mattresses	108,8	119,1	119,1	0,0	+9,5
- Ceiling insulation	104,5	104,5	104,5	0,0	0,0
Insulator, porcelain	101,6	135,4	135,4	0,0	+33,3
Containers, glass	110,0	125,5	125,5	0,0	+14,1
Billets, mild steel	112,5	129,2	129,2	0,0	+14,8
Angles, mild steel	114,5	126,0	126,0	0,0	+10,0
Structural steel, unworked	102,8	152,3	149,6	-1,8	+45,5
Structural steel products	114,5	129,7	129,7	0,0	+13,3
Reinforcing steel	113,4	135,0	147,5	+9,3	+30,1
Plate, mild steel	114,3	115,4	115,4	0,0	+1,0
Sheet, uncoated	100,7	155,0	151,9	-2,0	+50,8
Sheet, galvanized	114,3	115,4	115,4	0,0	+1,0
Tinplate	116,5	130,0	130,0	0,0	+11,6
Steel tubes, pipes and fittings	101,1	107,4	107,4	0,0	+6,2
Copper, basic forms	111,4	131,3	131,4	+0,1	+18,0
Aluminium - Anodising	105,3	105,3	105,3	0,0	0,0
- Basic forms	119,6	129,9	135,8	+4,5	+13,5
- Extruded products	109,0	129,8	129,8	0,0	+19,1
- Sheetting	112,5	119,6	119,6	0,0	+6,3
Bearings, ball and roller	114,3	154,2	155,0	+0,5	+35,6
Electrical contracting materials	107,9	123,7	124,0	+0,2	+14,9
Construction machinery (excluding trucks)	108,4	120,9	120,7	-0,2	+11,3
Trucks	108,9	136,1	136,1	0,0	+25,0
Trucks and buses	..	134,5	134,5	0,0	..
Civil engineering plant	114,3	144,9	145,5	+0,4	+27,3
Diesel for the civil engineering industry	110,9	128,2	130,2	+1,6	+17,4
Mining machinery	103,3	110,5	110,5	0,0	+7,0
Rubber industry's indices:					
Natural rubber (imported)	100,0	100,0	100,0	0,0	0,0
Acrylonitrile butadiene rubber KRYNOC 805	100,0	100,0	100,0	0,0	0,0
Polychloroprene rubber WRT type (imported)	100,0	100,0	100,0	0,0	0,0
Carbon black - N774 (local)	100,0	100,0	100,0	0,0	0,0
- N660	100,0	100,0	100,0	0,0	0,0
Accelerator ORAC NS (local)	100,0	100,0	100,0	0,0	0,0
Anti-oxidant OROX - HR (local)	100,0	100,0	100,0	0,0	0,0
- Q	100,0	100,0	100,0	0,0	0,0
Anti-ozonant ORFLEX PP (local)	100,0	100,0	100,0	0,0	0,0
Bulk yarn - Nylon	100,0	100,0	100,0	0,0	0,0
- Cotton	100,0	100,0	100,0	0,0	0,0
Stearic acid (local)	100,0	100,0	100,0	0,0	0,0
Plasticiser DODP (local)	100,0	100,0	100,0	0,0	0,0
Coumarone indene resin (imported)	105,2	145,7	145,7	0,0	+38,5
Chlorobutyl rubber (imported)	100,0	100,0	100,0	0,0	0,0
EPDM Vistalon 5600 (imported)	100,0	100,0	100,0	0,0	0,0
Zinc oxide	100,0	100,0	100,0	0,0	0,0
Synthetic rubber - 1502	112,9	148,6	152,6	+2,7	+35,2
- 1712	110,7	148,5	150,1	+1,1	+35,6
Polybutadiene	119,2	161,3	167,9	+4,1	+40,9
Processing oil	100,0	100,0	100,0	0,0	0,0
Bead wire	100,0	100,0	100,0	0,0	0,0
Steel cord wire	100,0	100,0	100,0	0,0	0,0
Nylon fabric - 940 X 2	100,0	100,0	100,0	0,0	0,0
- 1400 X 2	100,0	100,0	100,0	0,0	0,0
Rayon fabric - 1840 X 2	100,0	100,0	100,0	0,0	0,0

Table 17 - Seasonally adjusted group and product indices of the Production Price Index

Description	Weights	Indices					
		May 2002	Jun 2002	Jul 2002	Aug 2002	Sep 2002	Oct 2002
All commodities for consumption in South Africa	100,00	123,0	123,6	125,1	126,0	126,9	127,6
Locally produced commodities	73,00	121,3	122,4	123,9	125,4	125,3	126,4
Imported commodities	27,00	127,7	127,0	128,2	127,7	130,1	130,9
Output of South African industry							
Total output	100,00	121,0	122,0	123,2	124,4	124,6	125,6
For South African consumption	100,00	121,3	122,4	123,9	125,4	125,3	126,4
Agriculture, Forestry and Fishing	12,50	123,2	126,8	132,1	135,8	141,6	143,8
Tobacco and Beverages	5,76	113,1	113,8	115,6	116,4	117,2	118,2
Textiles, Clothing and Footwear	5,39	113,6	116,1	116,4	117,0	118,6	119,2
Machinery and Transport equipment	12,50	116,2	116,7	117,0	118,8	119,5	120,0
Mining, Electricity, Gas and Water	9,96	114,2	118,5	117,3	117,2	100,3	100,5
Basic metals and Metal products	7,78	120,7	118,9	119,0	119,9	120,7	121,8
Food	12,44	132,7	134,8	136,5	140,6	142,2	144,0
Total Manufacturing	77,54	121,8	122,2	123,3	124,7	125,8	126,9

ADDITIONAL INFORMATION

EXPLANATORY NOTES

- Introduction** 1 This publication contains results of the monthly Surveys of Prices of Locally Produced Commodities (which are locally sold or exported) and Imported Commodities. These indices for commodities are classified to designated industries of the South African economy. They are calculated on the base 2000=100.
- Scope of the PPI survey** 2 The indices are compiled on a gross industry basis, i.e. each index relates to those articles, which are produced, imported and exported by the designated industries of the South African economy. Selling prices are collected from manufacturers, importers and Exporters.
- Classification** 3 The 1993 edition of the Standard Industrial Classification of all Economic Activities (SIC), Fifth edition, Report No. 09-90-02, was used to classify the statistical units in the survey. The SIC is based on the 1990 International Standard Industrial Classification of all Economic Activities (ISIC) with suitable adaptations for local conditions. Statistics in this publication are presented at SIC subdivision level.
- 4 This publication presents information which measures changes in prices of products, that are produced, imported or exported by establishments (branches). It excludes semi-processed products, which have been produced by the establishment within the manufacturing division and carried over to other establishments within the manufacturing division for further processing.
- Statistical unit** 5 The statistical unit is the establishment (branch), which is the smallest economic unit that functions as a separate entity. Each statistical unit is classified to an industry according to the classification of the products that the unit manufacturers, imports or exports.
- Survey methodology and design** 6 Different phases of sampling takes place. Firstly, a sample of products, based on the information collected through the Manufacturing census of 1996 and 1995/96 information on imports and exports received from Customs and Excise, SARS is designed and drawn. An indicator product is selected purposively within each product group. To be selected, a product should be part of the top 80% of products manufactured, imported or exported in that product group. Furthermore, it must be possible to obtain price quotations for the relevant product during the whole year. The sample of indicator products is revised every five years at which stage the weights of the indicator products/groups are also revised.
- This survey is collected by mail from a sample of approximately 3 500 manufacturers, 3 500 exporters and 3 500 importers. The indices are based on producer prices at the point of production in the case of commodities produced in South Africa, and wholesale prices “ex-warehouse”, in the case of imported commodities. Prices “delivered” or “free on rail” are accepted if this is the normal basis of quotation.
- Currently, an average of 20 000 price quotations are collected each month from approximately 5 500 outlets by means of 6 000 questionnaires. The indices are based on retail trade and service prices.
- Pricing basis** 7 Price information refers to the first seven days of the relevant month, except in the case of mining and most of the agricultural products, where it refers to the average price for the month. The average price of imported crude petroleum, used in the compilation of the import component of the PPI, is calculated as the value (in Rands) divided by the quantity of imported crude petroleum for the relevant month. **The prices of all items exclude Value Added Tax (VAT).**

Weighting basis 8 The index is a fixed weights index as the weights are determined in the base period and they do not change until the next base period. The commodities directly represented in the index were selected on the basis of the values of sales of products –

- produced during the 1995-96 financial year for locally produced commodities;
- exported during 1996; and
- imported during 1996.

These commodities constitute approximately 80 per cent of the total value of production/imports/exports during the relevant year as indicated above. Weights were allocated to each product in accordance with the value of sales for each item during the 1995/96 financial year. The basis on which the weighting structure of each main PPI component, indicated in the tables published in this statistical release, was calculated, is indicated in table C.

Table C– Basis on which the weighting structure of each PPI table is based

Number of table in this statistical release	PPI component	Basis for weighting structure
Table 10	Commodities for South African consumption	Sales value of South African production minus exports, plus imports
Table 11	Total output of South African industry groups	Sales value of South African production
Table 12	Output of South African industry groups for South African consumption	Sales value of South African production minus exports
Table 13	Imported commodities	Sales value of imported commodities
Table 14	Exported commodities	Sales value of exported commodities
Table 15	Materials used in certain industries	Value of materials used

Processing of price information 9 The prices that are quoted for the different products are checked. If the price difference between two successive periods are outside the specified range of increase (+10%) or decreases (-5%), the current price levels are confirmed with the relevant respondents through a telephone inquiry.

Calculating product price indices 10 Price relatives are calculated for each product per respondent by dividing the current prices by the previously quoted price. The price relative for each product is calculated by means of the geometric mean of the price relatives for each respondent. This price relative for each product is then applied to the product index for the previous month in order to obtain a product index for the relevant month.

Calculating group price indices 11 Group price indices are calculated by weighting product indices with the relevant product weight, according to each group's (local, import, export) weighting structure, using the Laspeyres index formula.

Contributions of specific products to the total PPI 12 The monthly (annual) contribution of a specific product or group of products to the total PPI is calculated by multiplying the weight of this product or group of products with the monthly (annual) change in the index for this product or group of products, divided by the index for 'All groups'.

Seasonal adjustment	13	Seasonal fluctuations in a time series are those fluctuations, which usually tend to occur at about the same time and with the same magnitude each year. This may be the result of climatic influences or other social and commercial habits (e.g. the price of bread, which was previously revised in October of each year). In the analysis of time series, Stats SA makes use of the X-11 technique, which was developed by the American Bureau of Census. The seasonally adjusted indices for the latest month are calculated with seasonal factors, which are based on a time series analysis of information up to and including the previous month. Thus these indices change every time that another month is added. In the past Stats SA did not revise the seasonal adjusted indices on a monthly basis, but revised the historical seasonally adjusted indices for a year, annually in January of each year. This methodology caused diversion between the annual changes in the seasonally adjusted and actual indices. After thorough investigations it was decided that in future the latest seasonally adjusted indices will be published every month. This will mean that the seasonally adjusted figures will not have a fixed base such as the figures of the time series for which seasonally adjustments were done. It also implies that the values of the seasonally adjusted indices will be changing on a monthly basis.										
Reliability of estimates	14	Inaccuracies may occur because of imperfections in reporting by enterprises and errors made in collection and processing of the data. Inaccuracies of this kind are referred to as non-sampling errors. Every effort is made to reduce non-sampling errors to a minimum by careful designing the questionnaires, editing data and efficient operating procedures.										
Related publications	15	Users may also wish to refer to the following publications, which are available from Stats SA - <ul style="list-style-type: none"> • Bulletin of Statistics; and • SA Statistics. 										
Unpublished statistics	16	In some cases, Stats SA can also make available formation, which is not published. This information can be made available in one or more of the following ways: computer printout, diskette or CD. Generally a fee is levied for providing unpublished information.										
Symbols and abbreviations	17	<table border="0" style="width: 100%;"> <tr> <td style="width: 50%;">Stats SA</td> <td>Statistics South Africa</td> </tr> <tr> <td>..</td> <td>not available</td> </tr> <tr> <td>-</td> <td>nil or not applicable</td> </tr> <tr> <td>*</td> <td>revised since previous publication</td> </tr> <tr> <td>avg</td> <td>average</td> </tr> </table>	Stats SA	Statistics South Africa	..	not available	-	nil or not applicable	*	revised since previous publication	avg	average
Stats SA	Statistics South Africa											
..	not available											
-	nil or not applicable											
*	revised since previous publication											
avg	average											

GLOSSARY

Annual percentage change	The annual percentage change is the change in the index of the relevant month of the current year compared with the index of the same month in the previous year expressed as
---------------------------------	---

a percentage and is generally accepted as the yardstick of PPI inflation.

Average annual percentage change	The average annual percentage change is the change in the average index of one year compared with the average index of the previous year expressed as a percentage.
Contribution of specific products to the total PPI	The monthly (annual) contribution of a specific product or group of products to the total PPI is calculated by multiplying the weight of the index with the monthly (annual) change of the index divided by the index for "All Items".
Establishment	An establishment (branch) is the smallest economic unit that functions as a separate entity.
Indicator products	Indicator products are those products whose sale value represent 80% of the total value of sales (turnover) in an industrial subgroup.
Monthly percentage change	The monthly percentage change is the change in the index of the relevant month compared to the index of the previous month expressed as a percentage.
Weights	The weights are the relevant importance of the indicator products in that subgroup. The weight of a product is calculated by dividing the actual value of sales of the relevant indicator product by the total value of sales in that subgroup.

For more information

Stats SA publishes approximately 300 different releases each year. It is not economically viable to produce them in more than one of South Africa's eleven official languages. Since the releases are used extensively, not only locally but also by international economic and social-scientific communities, Stats SA releases are published in English only.

Stats SA has copyright on this publication. Users may apply the information as they wish, provided that they acknowledge Stats SA as the source of the basic data wherever they process, apply, utilise, publish or distribute the data: and also that they specify that the relevant application and analysis (where applicable) result from their own processing of data.

Advance release calendar

An advance release calendar is disseminated on <http://www.statssa.gov.za>

Stats SA products

A complete set of Stats SA publications is available at the Stats SA Library and the following libraries -

National Library of South Africa, Pretoria Division
 National Library of South Africa, Cape Town Division
 Natal Society Library, Pietermaritzburg
 Library of Parliament, Cape Town
 Bloemfontein Public Library
 Johannesburg Public Library
 Eastern Cape Library Services, King William's Town
 Central Regional Library, Polkwane
 Central Reference Library, Nelspruit
 Central Reference Collection, Kimberley
 Central Reference Library, Mmabatho

Stats SA also provides a subscription service.

Electronic services

A large range of data are available via on-line services, diskette and computer printouts. For more details about our electronic data services, contact (012) 310 8600/8390/8351/4892/8496/8095.

You can visit us on the Internet at: <http://www.statssa.gov.za>

Enquiries

Telephone number: (012) 310 8600/8390/8351/4892/8496/8095 (user enquiries)
 (012) 310 8421/170/077 (technical enquiries)
 (012) 310 8161 (publishing)
 (012) 310 8490 (library)

Fax number: (012) 328 3932

e-mail: ppi@statssa.gov.za

Postal address: Private Bag x44, Pretoria, 0001