

# **Production Price Index (PPI)**

## **May 2005**

**Embargoed until:  
30 June 2005  
11:30**

**Preferred supplier of quality statistics**

## KEY FIGURES AS AT MAY 2005

## Production Price Index and rates of change according to main components

Base: 2000 = 100

Production Price Index components	Indices			Percentage change between	
	May 2004	Apr 2005	May 2005	Apr 2005 and May 2005	May 2004 and May 2005
				Actual %	Actual %
All commodities for consumption in South Africa	126,3	128,6	129,3	+ 0,5	+ 2,4
Locally produced commodities	129,2	131,9	132,5	+ 0,5	+ 2,6
Imported commodities	118,0	119,0	120,1	+ 0,9	+ 1,8
Output of South African industry					
Total output	126,9	130,4	131,0	+ 0,5	+ 3,2
For South African consumption	129,2	131,9	132,5	+ 0,5	+ 2,6

## KEY FINDINGS AS AT MAY 2005

Annual percentage change in the PPI is higher at + 2,4% at May 2005 (i.e. the PPI at May 2005 compared with that at May 2004)

*The Production Price Index (PPI) for all commodities for South African consumption shows an annual rate of change of + 2,4% at May 2005 (i.e. the PPI at May 2005 compared with that at May 2004). This rate is 0,6 of a percentage point higher than the corresponding annual rate of + 1,8% at April 2005 (i.e. the PPI at April 2005 compared with that at April 2004) (see table 1A, p.8). This higher annual rate at May 2005 compared with that at April 2005 could be explained by increases in the annual rates of change in the production price indices for:*

- *Products of petroleum and coal, of which the rate increased from + 21,4% at April 2005 to + 23,9% at May 2005.*
- *Chemicals and chemical products, of which the rate increased from + 1,5% at April 2005 to + 1,8% at May 2005.*
- *Agricultural products, of which the rate increased from - 13,7% at April 2005 to - 9,1% at May 2005.*

*From April 2005 to May 2005 the PPI for all commodities for South African consumption increased by 0,5%.*

The annual increase of 2,4% in the PPI for all commodities for South African consumption is due to annual increases in the price indices for locally produced commodities (+ 1,9 percentage points) and for imported commodities (+ 0,5 of a percentage point) (see table 2, p.8).

Annual percentage change in the PPI for locally produced commodities for consumption in South Africa is higher at 2,6% at May 2005 (i.e. the PPI at May 2005 compared with that at May 2004)

*The annual rate of increase in the PPI for locally produced commodities for consumption in South Africa is 2,6% at May 2005 (i.e. the PPI at May 2005 compared with that at May 2004), which is 0,7 of a percentage point higher than the corresponding annual rate of 1,9% at April 2005 (i.e. the PPI at April 2005 compared with that at April 2004) (see table 1B p.8).*

*From April 2005 to May 2005 the PPI for locally produced commodities for consumption in South Africa increased by 0,5%.*

The annual increase of 2,6% in the PPI for locally produced commodities for consumption in South Africa is due to large annual increases in the price indices for products of petroleum and coal (+ 0,9 of a percentage point), mining and quarrying products (+ 0,7 of a percentage point), basic metals (+ 0,5 of a percentage point), metal products (+ 0,3 of a percentage point), beverages (+ 0,2 of a percentage point), tobacco products (+ 0,2 of a percentage point), paper, paper products and printing (+ 0,2 of a percentage point), non-metallic mineral products (+ 0,2 of a percentage point) and electricity (+ 0,2 of a percentage point). These annual increases were partially counteracted by annual decreases in the price indices for agricultural products (- 0,9 of a percentage point), food at manufacturing (- 0,4 of a percentage point) and textiles and made-up goods (- 0,1 of a percentage point) (see table 6, p.10).

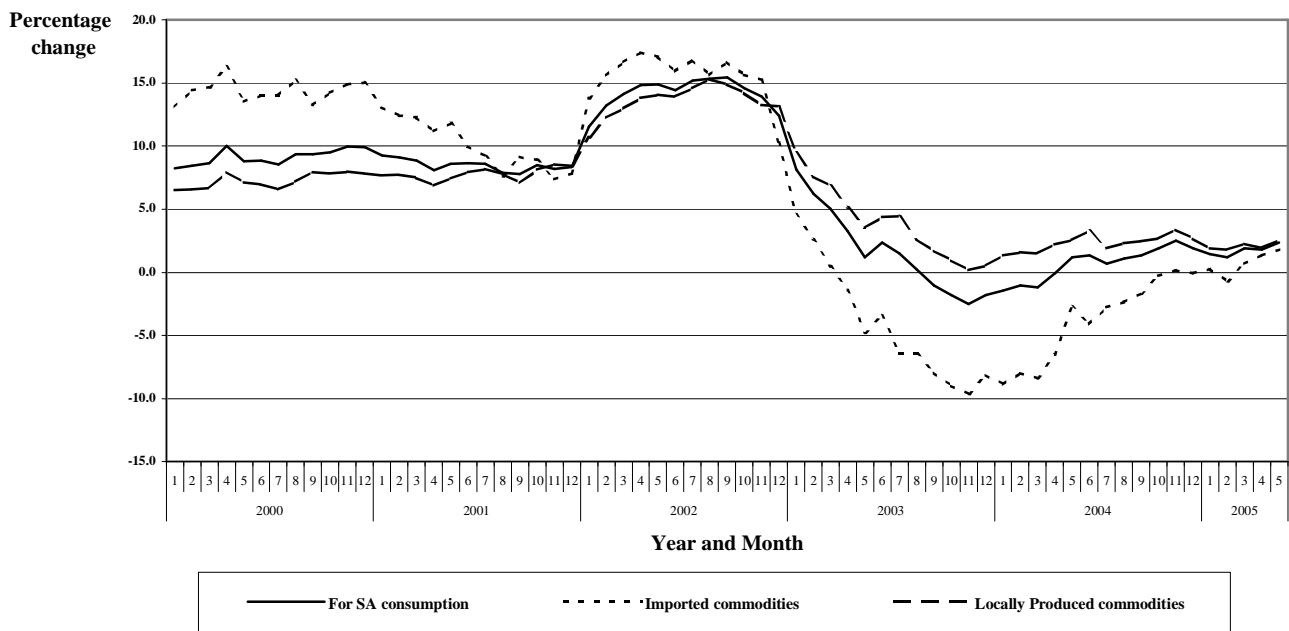
**Annual rate of change in the PPI for imported commodities is higher at + 1,8% at May 2005 (i.e. the PPI at May 2005 compared with that at May 2004)**

*The PPI for imported commodities shows an annual rate of increase of 1,8% at May 2005 (i.e. the PPI at May 2005 compared with that at May 2004). This rate is 0,4 of a percentage point higher than the corresponding annual rate of + 1,4% at April 2005 (i.e. the PPI at April 2005 compared with that at April 2004) (see table 1C, p.8).*

*From April 2005 to May 2005 the PPI for imported commodities increased by 0,9%.*

The annual increase of 1,8% in the PPI for imported commodities is mainly due to relatively large annual increases in the price indices for mining and quarrying products (+ 2,3 percentage points) and chemicals and chemical products (+ 0,5 of a percentage point). These annual increases were partially counteracted by relatively large annual decreases in the price indices for office, accounting and computing machinery (- 0,6 of a percentage point), non-electrical machinery and equipment (- 0,5 of a percentage point), agricultural products (- 0,2 of a percentage point) and food at manufacturing (- 0,2 of a percentage point) (see table 8, p.11).

**Figure 1 – Annual percentage change in the Production Price Index: Commodities for South African consumption**



Source: Stats SA

**PPI for all commodities for South African consumption**

The monthly increase of 0,5% in the PPI for all commodities for South African consumption is due to monthly increases in the price indices for locally produced commodities (+ 0,3 of a percentage point) and for imported commodities (+ 0,2 of a percentage point) (see table 3, p.8).

### **PPI for locally produced commodities for consumption in South Africa**

The monthly increase of 0,5% in the PPI for locally produced commodities for consumption in South Africa is due to monthly increases in the price indices for products of petroleum and coal (+ 0,2 of a percentage point), mining and quarrying products (+ 0,1 of a percentage point), basic metals (+ 0,1 of a percentage point) and electrical machinery and apparatus (+ 0,1 of a percentage point) (see table 7, p.10).

### **PPI for imported commodities**

The PPI for imported commodities increased by 0,9% from April 2005 to May 2005. Monthly increases occurred in the price indices for mining and quarrying products (+ 0,8 of a percentage point), agricultural products (+ 0,1 of a percentage point), non-electrical machinery and equipment (+ 0,1 of a percentage point) and transport equipment (+ 0,1 of a percentage point). These monthly increases were slightly counteracted by monthly decreases in the price indices for chemicals and chemical products (- 0,1 of a percentage point) and radio, television, communication equipment and apparatus (- 0,1 of a percentage point) (see table 9, p.11).

### **Monthly changes in the PPI for all commodities for South African consumption**

Relatively large monthly increases occurred in the price indices for products of petroleum and coal (+ 3,6%), mining and quarrying products (+ 3,5%), basic metals (+ 2,3%), electrical machinery and apparatus (+ 2,3%), gas, steam and water (+ 2,1%), office, accounting and computing machinery (+ 1,1%), metal products (+ 1,0%), medical, precision and optical instruments (+ 0,5%) and transport equipment (+ 0,5%). These monthly increases were slightly counteracted by monthly decreases in the price indices for radio, television and communication equipment and apparatus (- 2,3%), leather and leather products (- 0,4%), chemicals and chemical products (- 0,2%), electricity (- 0,2%) and food at manufacturing (- 0,1%) (see table 10, p.12 and 13).

### **Monthly changes in the PPI for imported commodities**

Relatively large monthly increases occurred in the price indices for mining and quarrying products (+ 6,6%), agricultural products (+ 3,1%), office, accounting and computing machinery (+ 1,1%), rubber and plastic products (+ 0,7%), electrical machinery and apparatus (+ 0,7%), paper, paper products and printing (+ 0,6%), basic metals (+ 0,6%) and medical, precision and optical instruments (+ 0,5%). These monthly increases were partially counteracted by monthly decreases in the price indices for radio, television and communication equipment and apparatus (- 3,0%), leather and leather products (- 0,9%), products of petroleum and coal (- 0,9%), fishing products (- 0,7%), chemicals and chemical products (- 0,5%) and wearing apparel (- 0,1%) (see table 13, p.18 and 19).

### **Monthly changes in the PPI for exported commodities**

Relatively large monthly increases occurred in the price indices for exported products of mining and quarrying products (+ 1,4%), metal products (+ 1,4%), electrical machinery and apparatus (+ 1,1%), non-metallic mineral products (+ 0,7%), food at manufacturing (+ 0,4%) and basic metals (+ 0,4%). These monthly increases were partially counteracted by monthly decreases in the price indices for products of petroleum and coal (- 2,4%), agricultural products (- 2,2%) and radio, television and communication equipment and apparatus (- 0,4%) (see table 14, p.20 and 21).

**P J Lehohla**  
**Statistician General: Statistics South Africa**

<b>CONTENTS</b>		<b>Page</b>
<b>Notes</b>	.....	5
<b>Tables</b>		
Table 1	Production Price Index (PPI) and the annual percentage change in the PPI on a monthly basis .....	8
Table 2	Contributions to the annual percentage change in the PPI for all commodities for consumption in South Africa according to their origin .....	8
Table 3	Contributions to the monthly percentage change in the PPI for all commodities for consumption in South Africa according to their origin .....	8
Table 4	Contributions to the annual percentage change in the PPI for all commodities for consumption in South Africa according to group. ....	9
Table 5	Contributions to the monthly percentage change in the PPI for all commodities for consumption in South Africa according to group.....	9
Table 6	Contributions to the annual percentage change in the PPI for locally produced commodities for consumption in South Africa according to group .....	10
Table 7	Contributions to the monthly percentage change in the PPI for locally produced commodities for consumption in South Africa according to group .....	10
Table 8	Contributions to the annual percentage change in the PPI for imported commodities according to group .....	11
Table 9	Contributions to the monthly percentage change in the PPI for imported commodities according to group .....	11
Table 10	Production Price Index for consumption in South Africa according to origin and group.....	12
Table 11	Production Price Index for total output of South African industry groups according to destination and group .....	14
Table 12	Production Price Index for output of South African industry groups for South African consumption according to group .....	16
Table 13	Production Price Index for imported commodities according to group .....	18
Table 14	Production Price Index for exported commodities according to group .....	20
Table 15	Production Price Index for materials used in certain industries .....	22
Table 16	Production Price Index for selected materials .....	22
<b>Additional information</b>		
	Explanatory notes .....	24
	Glossary .....	27
<b>For more information</b>	.....	28

## NOTES

<b>Forthcoming issues</b>	<b>Issue</b>	<b>Expected date of publication</b>
	June 2005	28 July 2005
	July 2005	25 August 2005
	August 2005	29 September 2005
	September 2005	27 October 2005
	October 2005	24 November 2005
	November 2005	15 December 2005
<b>Purpose of the survey</b>	<p>The Surveys of Prices of Locally Produced commodities (which are locally sold or exported) and Imported Commodities are monthly surveys covering samples of manufacturers, exporters and importers operating in the South African economy. The results of the survey are used to compile the Production Price Index (PPI), an economic indicator, which indicates the changes in production prices of locally produced commodities (which are locally sold or exported) and imported commodities. These statistics are used by the private sector in the analysis of comparative business and industry performance, as well as for contract price adjustments.</p>	
<b>Rebasing the PPI from 1995=100 to 2000=100</b>	<p>Following international practice, the base year of the Production Price Index (PPI) has been changed from 1995 =100 to 2000 =100 with effect from February 2001. For more information see the statistical release P0142.4 for the historical figures.</p>	
<b>Special Data Dissemination Standard (SDDS) of the International Monetary Fund (IMF)</b>	<p>South Africa's data dissemination practices are assessed against the IMF's Special Data Dissemination Standard (SDDS). A detailed description of the SDDS can be found on the IMF's Dissemination Standards Bulletin Board on the internet at <a href="http://dsbb.imf.org">http://dsbb.imf.org</a>. This is a "best practice" standard. It covers four sectors of the economy i.e. the real, fiscal, financial and external sectors, as well as population and identifies four dimensions i.e. data, access, integrity and quality, of data dissemination. For each of these dimensions, the SDDS prescribes two to four monitorable elements or good practices that can be observed, or monitored, by users of statistics. However, the IMF's monitoring of the SDDS as authorised by the IMF's Board of Executive Directors is limited to the dimensions of data i.e. coverage, periodicity and timeliness, and access i.e. advanced release calendar. It should also be noted that the SDDS is a disclosure standard, i.e. it focuses on encouraging the authorities to provide information to users, including information that will enable users to assess the data.</p> <p>The four institutions responsible for the compilation and dissemination of the SDDS prescribed data categories are National Treasury, the South African Revenue Services (SARS), the South African Reserve Bank (SARB) and Statistics South Africa (Stats SA).</p> <p>National Treasury is responsible for compiling and disseminating data on the national budget (budgetary central government operations). SARS is responsible for compiling and disseminating of data on international merchandise trade.</p> <p>The SARB is responsible for compiling and disseminating, the analytical accounts of the banking sector, the analytical accounts of the central bank, central government debt, interest rate, exchange rates, share price indices, balance of payments, the international investment position, international reserves and foreign currency liquidity.</p> <p>Stats SA is responsible for compiling and disseminating data on the production index, national accounts, government accounts, industry – based statistics, social statistics, the production price index, consumer price index, labour market and population statistics.</p> <p>South Africa has subscribed to the SDDS since 2 August 1996 and started posting its metadata on 27 September 1996. South Africa met the SDDS specifications for the coverage, periodicity and timeliness of the data, and for the dissemination of advanced release calendars on 18 September 2000. The National Summary Data Page has been hyperlinked since 24 April 1997 and the Data Template on International Reserves and Foreign Currency Liquidity was disseminated on 1 September 2000. South Africa is the only subscriber to the SDDS from the African continent.</p>	

**Reports on Observance of Standards and Codes (ROSC) of the International Monetary Fund (IMF)**

The IMF has been working actively on producing Reports on Observance of Standards and Codes (ROSC) as a step to strengthen the architecture of the international financial system. The objectives of the ROSC include the promotion of increased transparency and encouragement of implementation of internationally accepted standards and codes. One of the ROSC components is the data dissemination module, which falls under the responsibility of the IMF's Statistics Department (STA). In this module, a country is assessed according to the SDDS.

The data dissemination module of the ROSC provides a summary of South Africa's practices on the coverage, periodicity and timeliness of the data categories specified in the IMF's SDDS, and on the practices on the provision of advance release calendars for these categories. It is complemented by an assessment of the quality of the Production Price Index, using the Data Quality Assessment Framework (DQAF) developed by the IMF's Statistics Department.

The DQAF undertakes to assess data quality under the following dimensions -

- Prerequisites of quality;
- Integrity;
- Methodological soundness;
- Accuracy and reliability;
- Serviceability; and
- Accessibility

An IMF delegation visited South Africa from 7 to 18 May 2001 and produced a data ROSC for South Africa. This ROSC indicates to which extent South Africa has observed the IMF's requirements and is available at <http://www.imf.org/external/np/rosc/rosc.asp>.

**Methodological notes**

According to international best practice, the PPI is reweighted every five years. Stats SA reweighted the PPI as from June 1999 using a new basket of indicator products and their relevant weights.

The new baskets of indicator products manufactured and sold locally, exported and imported were compiled through various information sources. The information sources used to select the relevant indicator products in the different production industries are indicated in table A.

**Table A – Information sources used to select products in the different production industries**

Main products and industries	Sources
<b>Locally produced and sold items</b>	
Agriculture	Department of Agriculture
Fishing	Fishing Handbook, 1996
Forestry	Commercial Timber Resources and Roundwood Processing in South Africa, 1996
Mining and quarrying	Department of Minerals and Energy Affairs
Manufacturing	Stats SA, Census of Manufacturing, 1996
Electricity, gas and steam	Stats SA, Census of Electricity, Gas and Steam, 1995
Water	Department of Water Affairs and Forestry
<b>Imported items</b>	South African Revenue Services
<b>Exported items</b>	South African Revenue Services

The products were classified according to the relevant Standard Industrial Classification (SIC) subgroups. The products in each subgroup were then sorted according to their value of sales. The products contributing to the top 80% of the sales in each subgroup were selected as indicator products. These are the products for which prices will be monitored periodically by Stats SA.

The questionnaire(s) for each subgroup, which are used to collect the relevant price information from respondents, were adjusted to include the newly selected indicator products. Although the products on each questionnaire differ from the other questionnaires, their layout is identical.

For each indicator product a sample of manufacturers, importers and exporters was drawn from all the manufacturers, importers and exporters who manufacture, import or export the specific indicator product. The list of manufacturers, importers and exporters (sampling frame), from which the samples were drawn, are indicated in table B.

**Table B – Sampling frame**

<b>Main products and industries</b>	<b>Sources</b>
<b>Locally produced and sold products</b>	
Agriculture	List of fresh produce markets
Mining and quarrying	List of mines
Forestry	List obtained from Department of Agriculture Old sample of PPI
Fishing	Old sample of PPI List obtained from other sources
Manufacturing	List of manufacturers from the Census of Manufacturing, 1996 List of manufactures from trade unions
Electricity, gas and steam	List of producers according to the Census Of Electricity, Gas and Steam, 1995
Water	Old sample of PPI.
<b>Imported products</b>	List of importers obtained from South African Revenue Services
<b>Exported items</b>	List of exporters obtained from South African Revenue Services



Table 1 - Production Price Index (PPI) and the annual percentage change in the PPI on a monthly basis

Base : 2000 = 100

Year		Jan.	Feb.	Mar.	Apr.	May	Jun.	Jul.	Aug.	Sep.	Oct.	Nov.	Dec.	Avg.
<b>A) Commodities for consumption in South African</b>														
2003	Index	126,4	126,5	126,5	126,5	124,8	126,6	127,1	126,5	125,1	125,0	124,6	124,6	125,9
	%	+8,1	+6,2	+5,1	+3,3	+1,2	+2,3	+1,5	+0,2	-1,0	-1,8	-2,5	-1,8	+1,7
2004	Index	124,6	125,2	125,0	126,3	126,3	128,3	128,0	127,9	126,8	127,4	127,7	127,0	126,7
	%	-1,4	-1,0	-1,2	-0,2	+1,2	+1,3	+0,7	+1,1	+1,4	+1,9	+2,5	+1,9	+0,6
2005	Index	126,4	126,7	127,4	128,6	129,3	..	..	..	..	..	..	..	..
	%	+1,4	+1,2	+1,9	+1,8	+2,4	..	..	..	..	..	..	..	..
<b>B) Locally produced commodities for consumption in South Africa</b>														
2003	Index	125,8	126,2	126,3	126,7	126,0	128,0	129,7	129,1	127,2	127,3	126,7	127,2	127,2
	%	+9,5	+7,6	+6,9	+5,2	+3,5	+4,4	+4,4	+2,6	+1,7	+1,0	+0,2	+0,6	+3,9
2004	Index	127,5	128,2	128,2	129,4	129,2	132,2	132,2	132,1	130,3	130,7	131,0	130,6	130,1
	%	+1,4	+1,6	+1,5	+2,1	+2,5	+3,3	+1,9	+2,3	+2,4	+2,7	+3,4	+2,7	+2,3
2005	Index	129,9	130,5	131,1	131,9	132,5	..	..	..	..	..	..	..	..
	%	+1,9	+1,8	+2,3	+1,9	+2,6	..	..	..	..	..	..	..	..
<b>C) Imported commodities</b>														
2003	Index	127,6	126,8	126,5	125,6	121,3	122,2	119,5	119,0	119,1	118,5	118,2	117,1	121,8
	%	+4,6	+2,6	+0,5	-1,4	-4,8	-3,4	-6,4	-6,4	-8,0	-9,0	-9,6	-8,2	-4,2
2004	Index	116,3	116,7	115,9	117,4	118,0	117,2	116,2	116,2	117,1	118,2	118,4	117,0	117,1
	%	-8,9	-8,0	-8,4	-6,5	-2,7	-4,1	-2,8	-2,4	-1,7	-0,3	+0,2	-0,1	-3,9
2005	Index	116,6	115,9	116,7	119,0	120,1	..	..	..	..	..	..	..	..
	%	+0,3	-0,7	+0,7	+1,4	+1,8	..	..	..	..	..	..	..	..

Table 2 - Contributions to the annual percentage change in the PPI for all commodities for consumption in South Africa according to their origin

Origin of contribution	Contribution at April 2005	Contribution at May 2005
Locally produced commodities	+1,5	+1,9
Imported commodities	+0,3	+0,5
<b>All groups</b>	<b>+1,8</b>	<b>+2,4</b>

Table 3 - Contributions to the monthly percentage change in the PPI for all commodities for consumption in South Africa according to their origin

Origin of contribution	Contribution at April 2005	Contribution at May 2005
Locally produced commodities	+0,4	+0,3
Imported commodities	+0,5	+0,2
<b>All groups</b>	<b>+0,9</b>	<b>+0,5</b>

Table 4 - Contributions to the annual percentage change in the PPI for all commodities for consumption in South Africa according to group

Group	Contribution at April 2005	Contribution at May 2005
Agriculture	-1,1	-0,7
Mining and quarrying	+1,1	+1,1
Food at manufacturing	-0,4	-0,4
Beverages	+0,1	+0,1
Tobacco products	+0,1	+0,1
Textiles and made-up goods	-0,1	-0,1
Wood and wood products	+0,1	+0,1
Paper, paper products and printing	+0,1	+0,1
Products of petroleum and coal	+0,6	+0,7
Chemicals and chemical products	+0,1	+0,2
Rubber and plastic products	+0,1	+0,1
Non-metallic mineral products	+0,1	+0,1
Basic metals	+0,4	+0,4
Metal products	+0,2	+0,2
Office, accounting and computing machinery	-0,1	-0,1
Transport equipment	+0,1	+0,1
Furniture	+0,1	+0,1
Electricity	+0,2	+0,2
Gas, steam and water	+0,1	+0,1
<b>All groups</b>	<b>+1,8</b>	<b>+2,4</b>

Table 5 - Contributions to the monthly percentage change in the PPI for all commodities for consumption in South Africa according to group

Group	Contribution at April 2005	Contribution at May 2005
Agricultural products	-0,3	0,0
Mining and quarrying	+0,5	+0,2
Beverages	+0,1	0,0
Wood and wood products	+0,1	0,0
Paper, paper products and printing	+0,1	0,0
Products of petroleum and coal	+0,3	+0,1
Chemicals and chemical products	+0,1	0,0
Basic metals	+0,1	+0,1
Electrical machinery and apparatus	0,0	+0,1
Radio, TV, communication equipment and apparatus	0,0	-0,1
Transport equipment	0,0	+0,1
Electricity	-0,1	0,0
<b>All groups</b>	<b>+0,9</b>	<b>+0,5</b>

Table 6 - Contributions to the annual percentage change in the PPI for locally produced commodities for consumption in South Africa according to group

Group	Contribution at April 2005	Contribution at May 2005
Agriculture	-1,2	-0,9
Mining and quarrying	+0,6	+0,7
Food at manufacturing	-0,4	-0,4
Beverages	+0,2	+0,2
Tobacco products	+0,2	+0,2
Textiles and made-up goods	-0,1	-0,1
Wood and wood products	+0,1	+0,1
Paper, paper products and printing	+0,2	+0,2
Products of petroleum and coal	+0,7	+0,9
Rubber and plastic products	+0,1	+0,1
Non-metallic mineral products	+0,2	+0,2
Basic metals	+0,5	+0,5
Metal products	+0,3	+0,3
Non-electrical machinery and equipment	+0,1	+0,1
Electrical machinery and apparatus	+0,1	+0,1
Transport equipment	+0,1	+0,1
Electricity	+0,1	+0,2
Gas, steam and water	+0,1	+0,1
<b>All groups</b>	<b>+1,9</b>	<b>+2,6</b>

Table 7 - Contributions to the monthly percentage change in the PPI for locally produced commodities for consumption in South Africa according to group

Group	Contribution at April 2005	Contribution at May 2005
Agriculture	-0,3	0,0
Mining and quarrying	+0,2	+0,1
Beverages	+0,1	0,0
Tobacco products	+0,1	0,0
Paper, paper products and printing	+0,1	0,0
Products of petroleum and coal	+0,4	+0,2
Basic metals	+0,1	+0,1
Electrical machinery and apparatus	0,0	+0,1
Electricity	-0,1	0,0
<b>All groups</b>	<b>+0,6</b>	<b>+0,5</b>

Table 8 - Contributions to the annual percentage change in the PPI for imported commodities according to group

Group	Contribution at April 2005	Contribution at May 2005
Agriculture	-0,3	-0,2
Mining and quarrying	+2,3	+2,3
Food at manufacturing	-0,2	-0,2
Beverages	+0,1	+0,1
Textiles and made-up goods	-0,1	-0,1
Footwear	0,0	+0,1
Paper, paper products and printing	+0,1	+0,1
Products of petroleum and coal	+0,1	+0,1
Chemicals and chemical products	+0,5	+0,5
Rubber and plastic products	+0,1	+0,1
Non-metallic mineral products	+0,1	+0,1
Basic metals	+0,1	+0,1
Non-electrical machinery and equipment	-0,5	-0,5
Office, accounting and computing machinery	-0,6	-0,6
Electrical machinery and apparatus	-0,1	-0,1
Radio, TV, communication equipment and apparatus	-0,1	-0,1
Other manufacturers	-0,1	0,0
All other manufactures	0,0	+0,1
<b>All groups</b>	<b>+1,4</b>	<b>+1,8</b>

Table 9 - Contributions to the monthly percentage change in the PPI for imported commodities according to group

Group	Contribution at April 2005	Contribution at May 2005
Agricultural products	-0,1	+0,1
Mining and quarrying	+1,5	+0,8
Food at manufacturing	+0,1	0,0
Chemicals and chemical products	+0,2	-0,1
Non-electrical machinery and equipment	0,0	+0,1
Basic metals	+0,1	0,0
Radio, TV, communication equipment and apparatus	0,0	-0,1
Transport equipment	+0,2	+0,1
<b>All groups</b>	<b>+2,0</b>	<b>+0,9</b>

Table 10 - Production Price Index for consumption in South Africa according to origin and group

Base : 2000 = 100

Origin/Group	Weight	Indices			% change between	
		May 2004	Apr 2005	May 2005	Apr 2005 and May 2005	May 2004 and May 2005
All groups	100,00	126,3	128,6	129,3	+0,5	+2,4
South African	73,00	129,2	131,9	132,5	+0,5	+2,6
Imported	27,00	118,0	119,0	120,1	+0,9	+1,8
1. Agriculture, Forestry, Fishing and Mining	15,22	128,1	129,9	131,9	+1,5	+3,0
1.1 Agriculture	7,68	131,5	119,2	119,5	+0,3	-9,1
1.1.1 Food	7,34	127,0	118,4	118,7	+0,3	-6,5
Grain	1,51	134,6	91,5	92,6	+1,2	-31,2
Sugar cane	0,38	122,6	126,9	127,9	+0,8	+4,3
Oil seeds	0,18	181,6	146,5	147,1	+0,4	-19,0
Vegetables and dried beans	0,68	118,2	110,8	109,8	-0,9	-7,1
Fruit	0,68	112,0	123,0	122,8	-0,2	+9,6
Meat	2,37	126,1	130,8	131,2	+0,3	+4,0
Milk and eggs	0,96	130,0	123,1	123,2	+0,1	-5,2
Other	0,58	130,4	133,8	134,3	+0,4	+3,0
1.1.2 Other agriculture	0,34	188,8	130,8	129,8	-0,8	-31,3
1.2 Forestry	1,97	100,8	101,6	101,6	0,0	+0,8
1.3 Fishing	0,12	140,6	156,2	156,2	0,0	+11,1
1.4 Mining and quarrying	5,45	129,7	151,6	156,9	+3,5	+21,0
Coal	1,59	134,9	164,0	165,1	+0,7	+22,4
Metal ores	0,68	146,5	155,3	158,2	+1,9	+8,0
Other minerals	3,18	121,1	141,7	149,7	+5,6	+23,6
2. Manufacturing	80,28	127,6	129,7	130,2	+0,4	+2,0
South African	56,60	132,1	135,5	136,2	+0,5	+3,1
Imported	23,68	117,1	116,0	116,1	+0,1	-0,9
2.1 Food	10,16	137,3	133,3	133,2	-0,1	-3,0
Meat	1,79	140,1	144,8	144,7	-0,1	+3,3
Fresh meat	1,43	141,4	147,0	146,8	-0,1	+3,8
Meat products	0,36	134,6	135,2	135,4	+0,1	+0,6
Fish and fish products	0,19	127,9	122,6	121,9	-0,6	-4,7
Fruit and vegetable products	0,47	134,1	135,1	136,5	+1,0	+1,8
Fats and oils	0,84	130,9	117,8	118,8	+0,8	-9,2
Milk products	1,31	147,8	148,0	149,6	+1,1	+1,2
Grain mill products	1,82	129,4	111,7	109,9	-1,6	-15,1
Sugar	0,35	121,7	122,3	122,3	0,0	+0,5
Coffee and tea	0,23	134,7	131,1	131,4	+0,2	-2,4
Other	3,16	139,8	138,4	138,3	-0,1	-1,1
2.2 Beverages	3,26	139,8	145,3	145,3	0,0	+3,9
Alcoholic	2,35	142,7	148,8	148,8	0,0	+4,3
Non-alcoholic	0,91	132,3	136,1	136,1	0,0	+2,9
2.3 Tobacco products	1,15	144,4	159,8	159,8	0,0	+10,7
2.4 Textiles and made-up goods	2,39	117,4	115,0	115,0	0,0	-2,0
Spinning, weaving and finishing of textiles	1,43	115,0	109,8	109,9	+0,1	-4,4
Other textiles	0,96	121,1	122,7	122,8	+0,1	+1,4
2.5 Wearing apparel	1,81	120,3	119,6	119,6	0,0	-0,6
Knitted and crocheted fabrics and articles	0,42	124,4	120,4	120,5	+0,1	-3,1
Wearing apparel	1,39	119,0	119,3	119,3	0,0	+0,3
Men's and boys' clothing	0,56	119,9	118,8	118,8	0,0	-0,9
Women's and girls' clothing	0,78	116,5	117,6	117,5	-0,1	+0,9
Other, including articles of fur	0,05	145,8	148,9	148,9	0,0	+2,1
2.6 Leather and leather products	0,29	119,5	117,0	116,5	-0,4	-2,5
2.7 Footwear	0,69	121,1	121,5	121,5	0,0	+0,3
2.8 Wood and wood products	1,26	127,5	136,6	136,7	+0,1	+7,2
Sawmilling and planing of wood	0,44	118,8	130,7	130,7	0,0	+10,0
Products of wood, cork and plaiting materials	0,82	132,2	139,8	139,8	0,0	+5,7
2.9 Paper, paper products and printing	8,13	129,5	131,3	131,4	+0,1	+1,5
Paper and paper products	3,21	128,3	128,4	128,5	+0,1	+0,2
Publishing and printing	4,92	130,4	133,3	133,4	+0,1	+2,3
2.10 Products of petroleum and coal	2,75	124,8	149,2	154,6	+3,6	+23,9
2.11 Chemicals and chemical products	8,39	130,6	133,1	132,9	-0,2	+1,8
Basic chemicals	3,54	134,0	140,9	140,8	-0,1	+5,1
Fertilizers	0,45	127,7	135,6	135,7	+0,1	+6,3
Other basic chemicals	3,09	134,8	141,7	141,6	-0,1	+5,0
Compounded chemical products	4,85	127,8	127,1	126,7	-0,3	-0,9
Pharmaceutical products	1,47	126,3	123,9	122,8	-0,9	-2,8
Other compounded chemical products	3,38	128,4	128,5	128,3	-0,2	-0,1

Table 10 - Production Price Index for consumption in South Africa according to origin and group (concluded)

Base : 2000 = 100

Origin/Group	Weight	Indices			% -change between	
		May 2004	Apr 2005	May 2005	Apr 2005 and May 2005	May 2004 and May 2005
2.12 Rubber and plastic products	2,71	126,2	131,7	131,9	+0,2	+4,5
Rubber products	0,85	133,3	137,6	138,1	+0,4	+3,6
Plastic products	1,86	122,9	129,0	129,0	0,0	+5,0
2.13 Non-metallic mineral products	2,25	138,3	144,7	145,0	+0,2	+4,8
Glass and glass products	0,61	129,2	130,0	129,3	-0,5	+0,1
Other	1,64	141,4	149,9	150,5	+0,4	+6,4
2.14 Basic metals	3,97	126,3	135,0	138,1	+2,3	+9,3
Ferrous	1,82	144,9	158,7	164,0	+3,3	+13,2
Non-ferrous	2,15	110,7	115,0	116,2	+1,0	+5,0
2.15 Metal products	3,18	131,4	138,1	139,5	+1,0	+6,2
Structural metal products	1,00	138,9	144,6	145,6	+0,7	+4,8
Other	2,18	128,1	135,4	136,9	+1,1	+6,9
2.16 Non-electrical machinery and equipment	6,72	120,2	119,0	119,3	+0,3	-0,7
General purpose machinery	2,44	123,4	122,9	123,2	+0,2	-0,2
Special purpose machinery	3,69	120,3	118,4	118,9	+0,4	-1,2
Household appliances	0,59	121,0	121,0	120,7	-0,2	-0,2
2.17 Office, accounting and computing machinery	1,41	86,0	73,9	74,7	+1,1	-13,1
2.18 Electrical machinery and apparatus	2,48	124,0	124,3	127,2	+2,3	+2,6
Electric motors, generators and transformers	0,34	113,9	115,6	119,3	+3,2	+4,7
Electricity distribution and control apparatus	0,75	118,0	114,4	115,6	+1,0	-2,0
Insulated wire and cable	0,69	135,0	138,6	145,2	+4,8	+7,6
Other	0,70	123,4	123,7	124,3	+0,5	+0,7
2.19 Radio, television and communication equipment and apparatus	2,70	114,1	112,8	110,2	-2,3	-3,4
2.20 Medical, precision and optical instruments	1,18	115,5	115,3	115,9	+0,5	+0,3
Medical appliances and instruments for measuring, checking, testing and navigating	0,99	113,3	113,9	114,4	+0,4	+1,0
Other, including watches and clocks	0,19	126,4	122,3	122,7	+0,3	-2,9
2.21 Transport equipment	11,04	126,9	127,3	127,9	+0,5	+0,8
Motor vehicles, parts and accessories	10,50	127,8	128,6	129,2	+0,5	+1,1
Motor vehicles	5,43	125,0	125,2	124,7	-0,4	-0,2
Bodies, trailers and semi-trailers	0,16	125,3	127,1	127,1	0,0	+1,4
Parts and accessories	4,91	130,3	131,7	133,4	+1,3	+2,4
Other transport equipment	0,54	108,6	102,9	103,5	+0,6	-4,7
2.22 Furniture	1,01	124,6	127,6	127,9	+0,2	+2,6
2.23 Other manufactures	1,35	116,5	116,9	117,2	+0,3	+0,6
3. Electricity, Gas Steam and Water	4,50	95,3	101,8	101,9	+0,1	+6,9
3.1 Electricity	4,17	92,2	98,0	97,8	-0,2	+6,1
3.2 Gas, Steam and water	0,33	134,0	149,4	152,5	+2,1	+13,8

Table 11 - Production Price Index for total output of South African industry groups according to destination and group

Base : 2000 = 100

Origin/Group	Weight	Indices			% change between	
		May 2004	Apr 2005	May 2005	Apr 2005 and May 2005	May 2004 and May 2005
All groups	100,00	126,9	130,4	131,0	+0,5	+3,2
South African	75,88	129,2	131,9	132,5	+0,5	+2,6
Exported	24,12	119,8	125,9	126,4	+0,4	+5,5
1. Agriculture, Forestry, Fishing and Mining	19,69	124,4	126,1	126,7	+0,5	+1,8
1.1 Agriculture	8,55	128,5	116,3	116,0	-0,3	-9,7
1.1.1 Food	8,35	123,6	114,7	114,5	-0,2	-7,4
Grain	1,70	138,1	93,1	92,9	-0,2	-32,7
Sugar cane	0,40	122,6	126,9	127,9	+0,8	+4,3
Oil seeds	0,18	181,6	146,5	147,1	+0,4	-19,0
Vegetables and dried beans	0,81	114,7	108,3	107,4	-0,8	-6,4
Fruit	1,20	89,6	96,9	95,6	-1,3	+6,7
Meat	2,48	125,7	130,3	130,7	+0,3	+4,0
Milk and eggs	1,00	130,2	123,2	123,3	+0,1	-5,3
Other	0,58	138,2	144,2	144,2	0,0	+4,3
1.1.2 Other agriculture	0,20	208,4	142,8	140,3	-1,8	-32,7
1.2 Forestry	2,06	100,8	101,6	101,6	0,0	+0,8
1.3 Fishing	0,16	137,7	152,3	152,4	+0,1	+10,7
1.4 Mining and quarrying	8,92	125,3	140,2	141,9	+1,2	+13,2
Coal	3,22	139,8	170,3	172,9	+1,5	+23,7
Metal ores	3,64	124,8	130,0	131,4	+1,1	+5,3
Other minerals	2,06	103,2	111,2	111,6	+0,4	+8,1
2. Manufacturing	75,63	129,5	133,3	133,9	+0,5	+3,4
South African	58,83	132,1	135,5	136,2	+0,5	+3,1
Exported	16,80	120,9	126,0	126,2	+0,2	+4,4
2.1 Food	10,77	136,9	133,4	133,3	-0,1	-2,6
Meat	1,83	139,1	144,3	144,1	-0,1	+3,6
Fresh meat	1,34	141,6	147,1	146,9	-0,1	+3,7
Meat products	0,49	129,9	133,9	134,1	+0,1	+3,2
Fish and fish products	0,24	131,5	125,7	125,4	-0,2	-4,6
Fruit and vegetable products	0,77	124,6	124,0	124,9	+0,7	+0,2
Fats and oils	0,61	135,7	125,2	127,1	+1,5	-6,3
Milk products	1,35	148,4	148,7	150,3	+1,1	+1,3
Grain mill products	1,80	130,2	111,7	109,6	-1,9	-15,8
Sugar	0,70	123,7	124,1	124,1	0,0	+0,3
Coffee and tea	0,24	135,6	132,0	132,3	+0,2	-2,4
Other	3,23	140,6	139,1	139,0	-0,1	-1,1
2.2 Beverages	3,58	137,5	142,3	142,3	0,0	+3,5
Alcoholic	2,61	139,7	144,9	144,9	0,0	+3,7
Non-alcoholic	0,97	131,5	135,2	135,2	0,0	+2,8
2.3 Tobacco products	1,22	143,4	158,4	158,4	0,0	+10,5
2.4 Textiles and made-up goods	2,26	123,3	118,7	118,7	0,0	-3,7
Spinning, weaving and finishing of textiles	1,37	124,7	116,2	116,2	0,0	-6,8
Other textiles	0,89	121,2	122,6	122,6	0,0	+1,2
2.5 Wearing apparel	1,83	119,9	119,2	119,2	0,0	-0,6
Knitted and crocheted fabrics and articles	0,38	126,5	122,2	122,2	0,0	-3,4
Wearing apparel	1,45	118,3	118,5	118,5	0,0	+0,2
Men's and boys' clothing	0,60	120,6	119,1	119,1	0,0	-1,2
Women's and girls' clothing	0,80	115,3	116,6	116,6	0,0	+1,1
Other, including articles of fur	0,05	138,1	142,0	142,0	0,0	+2,8
2.6 Leather and leather products	0,33	106,6	111,4	111,4	0,0	+4,5
2.7 Footwear	0,55	123,2	124,7	124,7	0,0	+1,2
2.8 Wood and wood products	1,20	133,3	142,5	142,5	0,0	+6,9
Sawmilling and planing of wood	0,36	139,4	151,2	151,2	0,0	+8,5
Products of wood, cork and plaiting materials	0,84	129,9	137,6	137,6	0,0	+5,9
2.9 Paper, paper products and printing	8,36	127,8	130,0	130,0	0,0	+1,7
Paper and paper products	3,60	123,1	123,8	123,8	0,0	+0,6
Publishing and printing	4,76	131,3	134,8	134,8	0,0	+2,7
2.10 Products of petroleum and coal	3,27	125,5	156,2	160,2	+2,6	+27,6
2.11 Chemicals and chemical products	7,41	130,8	131,5	131,6	+0,1	+0,6
Basic chemicals	3,53	133,0	136,6	136,6	0,0	+2,7
Fertilizers	0,59	123,2	124,6	124,6	0,0	+1,1
Other basic chemicals	2,94	134,9	139,0	139,0	0,0	+3,0
Compounded chemical products	3,88	128,6	126,8	126,8	0,0	-1,4
Pharmaceutical products	0,88	133,3	122,2	122,2	0,0	-8,3
Other compounded chemical products	3,00	127,2	128,1	128,2	+0,1	+0,8

Table 11 - Production Price Index for total output of South African industry groups according to destination and group (concluded)

Base : 2000 = 100

Origin/Group	Weight	Indices			% -change between	
		May 2004	Apr 2005	May 2005	Apr 2005 and May 2005	May 2004 and May 2005
2.12 Rubber and plastic products	2,48	130,1	135,3	135,3	0,0	+4,0
Rubber products	0,75	143,7	147,9	147,9	0,0	+2,9
Plastic products	1,73	124,1	129,6	129,6	0,0	+4,4
2.13 Non-metallic mineral products	2,11	140,0	147,6	148,0	+0,3	+5,7
Glass and glass products	0,56	131,5	133,9	133,1	-0,6	+1,2
Other	1,55	142,7	152,1	153,0	+0,6	+7,2
2.14 Basic metals	8,68	129,7	139,8	141,6	+1,3	+9,2
Ferrous	4,04	153,3	162,5	163,9	+0,9	+6,9
Non-ferrous	4,64	109,3	120,3	122,3	+1,7	+11,9
2.15 Metal products	3,23	132,3	140,0	141,6	+1,1	+7,0
Structural metal products	1,24	140,1	145,1	146,1	+0,7	+4,3
Other	1,99	127,5	136,8	138,8	+1,5	+8,9
2.16 Non-electrical machinery and equipment	3,57	125,7	127,7	127,8	+0,1	+1,7
General purpose machinery	1,26	117,7	119,6	119,9	+0,3	+1,9
Special purpose machinery	1,96	129,1	131,3	131,4	+0,1	+1,8
Household appliances	0,35	121,0	123,3	122,4	-0,7	+1,2
2.17 Office, accounting and computing machinery	0,14	100,4	100,4	100,4	0,0	0,0
2.18 Electrical machinery and apparatus	1,90	127,5	129,6	133,3	+2,9	+4,5
Electric motors, generators and transformers	0,19	130,3	133,0	141,4	+6,3	+8,5
Electricity distribution and control apparatus	0,45	120,3	121,5	122,8	+1,1	+2,1
Insulated wire and cable	0,69	133,4	136,9	143,9	+5,1	+7,9
Other	0,57	125,2	125,9	126,1	+0,2	+0,7
2.19 Radio, television and communication equipment and apparatus	1,34	131,0	128,4	126,5	-1,5	-3,4
2.20 Medical, precision and optical instruments	0,32	122,3	123,9	123,9	0,0	+1,3
Medical appliances and instruments for measuring, checking, testing and navigating	0,28	122,9	124,7	124,7	0,0	+1,5
Other, including watches and clocks	0,04	118,6	118,1	118,1	0,0	-0,4
2.21 Transport equipment	8,32	124,5	125,5	126,0	+0,4	+1,2
Motor vehicles, parts and accessories	8,07	125,3	126,2	126,8	+0,5	+1,2
Motor vehicles	5,31	126,3	126,7	126,2	-0,4	-0,1
Bodies, trailers and semi-trailers	0,33	111,4	112,3	112,3	0,0	+0,8
Parts and accessories	2,43	124,8	126,9	129,8	+2,3	+4,0
Other transport equipment	0,25	103,9	103,9	104,1	+0,2	+0,2
2.22 Furniture	1,39	118,7	121,0	121,1	+0,1	+2,0
2.23 Other manufactures	1,37	113,0	114,6	114,9	+0,3	+1,7
3. Electricity, Gas Steam and Water	4,68	95,3	101,8	101,9	+0,1	+6,9
3.1 Electricity	4,35	92,2	98,0	97,8	-0,2	+6,1
3.2 Gas, Steam and water	0,33	134,0	149,4	152,5	+2,1	+13,8



Table 12 - Production Price Index for output of South African industry groups for South African consumption according to group

Base : 2000 = 100

Origin/Group	Weight	Indices			% change between	
		May 2004	Apr 2005	May 2005	Apr 2005 and May 2005	May 2004 and May 2005
All groups	100,00	129,2	131,9	132,5	+0,5	+2,6
South African	100,00	129,2	131,9	132,5	+0,5	+2,6
Exported	-	-	-	-	-	-
1. Agriculture, Forestry, Fishing and Mining	16,29	128,5	126,3	126,6	+0,2	-1,5
1.1 Agriculture	9,67	133,3	121,1	121,1	0,0	-9,2
1.1.1 Food	9,44	128,1	119,6	119,8	+0,2	-6,5
Grain	1,59	140,9	89,1	89,4	+0,3	-36,6
Sugar cane	0,52	122,6	126,9	127,9	+0,8	+4,3
Oil seeds	0,24	181,6	146,5	147,1	+0,4	-19,0
Vegetables and dried beans	0,93	118,2	110,8	109,8	-0,9	-7,1
Fruit	0,91	111,7	122,0	121,7	-0,2	+9,0
Meat	3,23	126,3	131,0	131,3	+0,2	+4,0
Milk and eggs	1,32	130,0	123,1	123,2	+0,1	-5,2
Other	0,70	138,2	144,2	144,2	0,0	+4,3
1.1.2 Other agriculture	0,23	222,3	145,8	143,3	-1,7	-35,5
1.2 Forestry	2,67	100,8	101,7	101,7	0,0	+0,9
1.3 Fishing	0,16	141,3	157,3	157,3	0,0	+11,3
1.4 Mining and quarrying	3,79	134,7	155,4	156,7	+0,8	+16,3
Coal	2,09	136,4	167,0	168,0	+0,6	+23,2
Metal ores	0,88	148,8	158,0	161,1	+2,0	+8,3
Other minerals	0,82	115,9	124,3	124,3	0,0	+7,2
2. Manufacturing	77,54	132,1	135,5	136,2	+0,5	+3,1
South African	77,54	132,1	135,5	136,2	+0,5	+3,1
Exported	-	-	-	-	-	-
2.1 Food	12,44	139,6	136,0	135,9	-0,1	-2,7
Meat	2,20	141,3	147,0	146,8	-0,1	+3,9
Fresh meat	1,85	143,0	148,8	148,5	-0,2	+3,8
Meat products	0,35	131,4	136,8	136,9	+0,1	+4,2
Fish and fish products	0,10	177,9	173,4	171,5	-1,1	-3,6
Fruit and vegetable products	0,57	135,3	136,8	138,5	+1,2	+2,4
Fats and oils	0,72	136,6	125,9	127,8	+1,5	-6,4
Milk products	1,72	149,4	149,6	151,2	+1,1	+1,2
Grain mill products	2,25	130,4	111,5	109,3	-2,0	-16,2
Sugar	0,48	121,6	122,2	122,3	+0,1	+0,6
Coffee and tea	0,31	135,5	131,3	131,6	+0,2	-2,9
Other	4,09	141,3	139,8	139,6	-0,1	-1,2
2.2 Beverages	4,21	140,4	145,7	145,7	0,0	+3,8
Alcoholic	2,98	143,7	149,7	149,7	0,0	+4,2
Non-alcoholic	1,23	132,5	136,3	136,3	0,0	+2,9
2.3 Tobacco products	1,55	144,5	160,0	160,0	0,0	+10,7
2.4 Textiles and made-up goods	2,52	120,2	117,1	117,1	0,0	-2,6
Spinning, weaving and finishing of textiles	1,49	118,1	112,1	112,1	0,0	-5,1
Other textiles	1,03	122,9	124,2	124,2	0,0	+1,1
2.5 Wearing apparel	2,19	120,9	120,3	120,3	0,0	-0,5
Knitted and crocheted fabrics and articles	0,46	127,3	122,7	122,7	0,0	-3,6
Wearing apparel	1,73	119,4	119,9	119,9	0,0	+0,4
Men's and boys' clothing	0,67	121,9	120,6	120,6	0,0	-1,1
Women's and girls' clothing	1,00	116,1	117,6	117,6	0,0	+1,3
Other, including articles of fur	0,06	143,5	148,0	148,0	0,0	+3,1
2.6 Leather and leather products	0,21	119,5	119,5	119,5	0,0	0,0
2.7 Footwear	0,68	122,7	123,6	123,6	0,0	+0,7
2.8 Wood and wood products	1,46	129,3	139,4	139,4	0,0	+7,8
Sawmilling and planing of wood	0,46	126,4	140,6	140,6	0,0	+11,2
Products of wood, cork and plaiting materials	1,00	130,7	138,9	138,9	0,0	+6,3
2.9 Paper, paper products and printing	9,82	131,3	133,9	133,9	0,0	+2,0
Paper and paper products	3,70	130,5	131,6	131,6	0,0	+0,8
Publishing and printing	6,12	131,9	135,3	135,3	0,0	+2,6
2.10 Products of petroleum and coal	3,29	126,8	153,7	160,1	+4,2	+26,3
2.11 Chemicals and chemical products	6,76	134,2	134,6	134,7	+0,1	+0,4
Basic chemicals	2,52	137,6	140,9	140,9	0,0	+2,4
Fertilizers	0,49	124,7	134,5	134,5	0,0	+7,9
Other basic chemicals	2,03	141,2	142,6	142,6	0,0	+1,0
Compounded chemical products	4,24	131,9	130,6	130,7	+0,1	-0,9
Pharmaceutical products	1,05	132,3	122,5	122,5	0,0	-7,4
Other compounded chemical products	3,19	131,8	133,3	133,3	0,0	+1,1

Table 12 - Production Price Index for output of South African industry groups for South African consumption according to group (concluded)

Base : 2000 = 100

Origin/Group	Weight	Indices			% -change between	
		May 2004	Apr 2005	May 2005	Apr 2005 and May 2005	May 2004 and May 2005
2.12 Rubber and plastic products	2,95	131,2	137,1	137,1	0,0	+4,5
Rubber products	0,83	144,2	150,1	150,1	0,0	+4,1
Plastic products	2,12	126,2	132,2	132,2	0,0	+4,8
2.13 Non-metallic mineral products	2,50	142,5	150,4	150,7	+0,2	+5,8
Glass and glass products	0,66	133,0	135,6	134,7	-0,7	+1,3
Other	1,84	145,6	155,3	156,1	+0,5	+7,2
2.14 Basic metals	4,20	130,7	140,5	144,2	+2,6	+10,3
Ferrous	1,90	152,2	168,7	175,3	+3,9	+15,2
Non-ferrous	2,30	113,3	117,5	118,9	+1,2	+4,9
2.15 Metal products	3,58	132,5	141,0	142,6	+1,1	+7,6
Structural metal products	1,31	140,8	146,7	147,9	+0,8	+5,0
Other	2,27	127,5	137,5	139,3	+1,3	+9,3
2.16 Non-electrical machinery and equipment	2,94	125,7	130,3	130,3	0,0	+3,7
General purpose machinery	0,94	119,8	123,5	123,9	+0,3	+3,4
Special purpose machinery	1,60	130,5	136,0	136,0	0,0	+4,2
Household appliances	0,40	121,1	124,1	122,9	-1,0	+1,5
2.17 Office, accounting and computing machinery	0,02	105,9	105,3	105,6	+0,3	-0,3
2.18 Electrical machinery and apparatus	2,15	129,4	131,9	136,0	+3,1	+5,1
Electric motors, generators and transformers	0,20	130,2	132,8	141,7	+6,7	+8,8
Electricity distribution and control apparatus	0,52	120,5	121,7	123,0	+1,1	+2,1
Insulated wire and cable	0,86	133,5	137,5	144,8	+5,3	+8,5
Other	0,57	130,2	131,6	131,8	+0,2	+1,2
2.19 Radio, television and communication equipment and apparatus	1,58	133,6	131,1	129,1	-1,5	-3,4
2.20 Medical, precision and optical instruments	0,25	118,7	120,5	120,5	0,0	+1,5
Medical appliances and instruments for measuring, checking, testing and navigating	0,22	117,5	119,5	119,5	0,0	+1,7
Other, including watches and clocks	0,03	128,4	128,5	128,5	0,0	+0,1
2.21 Transport equipment	9,60	126,5	127,5	128,1	+0,5	+1,3
Motor vehicles, parts and accessories	9,55	126,5	127,5	128,1	+0,5	+1,3
Motor vehicles	6,62	127,8	128,1	127,6	-0,4	-0,2
Bodies, trailers and semi-trailers	0,17	128,2	130,6	130,6	0,0	+1,9
Parts and accessories	2,76	123,2	125,6	128,9	+2,6	+4,6
Other transport equipment	0,05	106,7	106,7	107,5	+0,7	+0,7
2.22 Furniture	1,27	126,8	130,0	130,3	+0,2	+2,8
2.23 Other manufactures	1,37	117,5	119,4	119,8	+0,3	+2,0
3. Electricity, Gas Steam and Water	6,17	95,2	101,7	101,8	+0,1	+6,9
3.1 Electricity	5,72	92,2	98,0	97,8	-0,2	+6,1
3.2 Gas, Steam and water	0,45	134,0	149,4	152,5	+2,1	+13,8

Table 13 - Production Price Index for imported commodities according to group

Base : 2000 = 100

Origin/Group	Weight	Indices			% change between	
		May 2004	Apr 2005	May 2005	Apr 2005 and May 2005	May 2004 and May 2005
All groups	100,00	118,0	119,0	120,1	+0,9	+1,8
1. Agriculture, Forestry, Fishing and Mining	12,27	119,3	135,2	143,5	+6,1	+20,3
1.1 Agriculture	2,27	110,8	98,9	102,0	+3,1	-7,9
1.1.1 Food	1,66	111,7	100,5	103,8	+3,3	-7,1
Grain	1,30	114,0	99,8	103,3	+3,5	-9,4
Sugar cane	-	-	-	-	-	-
Oil seeds	-	-	-	-	-	-
Vegetables and dried beans	-	-	-	-	-	-
Fruit	0,06	116,8	151,0	156,7	+3,8	+34,2
Meat	0,05	104,2	104,2	104,2	0,0	0,0
Milk and eggs	-	-	-	-	-	-
Other	0,25	98,3	90,8	93,1	+2,5	-5,3
1.1.2 Other agriculture	0,61	108,9	94,8	97,4	+2,7	-10,6
1.2 Forestry	0,05	100,0	100,0	100,0	0,0	0,0
1.3 Fishing	0,01	101,7	101,7	101,0	-0,7	-0,7
1.4 Mining and quarrying	9,94	120,9	143,4	152,8	+6,6	+26,4
Coal	0,26	100,5	100,7	100,7	0,0	+0,2
Metal ores	0,12	98,1	98,2	98,2	0,0	+0,1
Other minerals	9,56	121,3	144,6	154,4	+6,8	+27,3
2. Manufacturing	87,73	117,1	116,0	116,1	+0,1	-0,9
2.1 Food	3,96	119,5	112,0	112,3	+0,3	-6,0
Meat	0,67	133,9	129,5	130,1	+0,5	-2,8
Fresh meat	0,46	126,1	129,0	129,7	+0,5	+2,9
Meat products	0,21	151,5	131,0	131,2	+0,2	-13,4
Fish and fish products	0,44	97,1	91,4	91,4	0,0	-5,9
Fruit and vegetable products	0,18	122,0	118,9	118,7	-0,2	-2,7
Fats and oils	1,16	122,3	105,3	104,6	-0,7	-14,5
Milk products	0,21	113,2	112,9	114,1	+1,1	+0,8
Grain mill products	0,65	117,7	111,7	112,7	+0,9	-4,2
Sugar	0,01	148,5	148,5	148,5	0,0	0,0
Coffee and tea	0,03	112,0	125,0	125,9	+0,7	+12,4
Other	0,61	114,1	114,0	114,9	+0,8	+0,7
2.2 Beverages	0,66	127,8	135,5	135,5	0,0	+6,0
Alcoholic	0,64	128,6	136,6	136,6	0,0	+6,2
Non-alcoholic	0,02	104,8	106,9	106,9	0,0	+2,0
2.3 Tobacco products	0,04	116,8	118,2	118,5	+0,3	+1,5
2.4 Textiles and made-up goods	2,03	108,7	108,2	108,3	+0,1	-0,4
Spinning, weaving and finishing of textiles	1,28	105,2	102,9	103,0	+0,1	-2,1
Other textiles	0,75	114,7	117,1	117,3	+0,2	+2,3
2.5 Wearing apparel	0,78	115,5	113,8	113,7	-0,1	-1,6
Knitted and crocheted fabrics and articles	0,30	113,7	112,4	112,7	+0,3	-0,9
Wearing apparel	0,48	116,7	114,8	114,5	-0,3	-1,9
Men's and boys' clothing	0,24	104,3	104,7	104,7	0,0	+0,4
Women's and girls' clothing	0,20	124,0	119,5	118,7	-0,7	-4,3
Other, including articles of fur	0,04	151,8	149,8	149,8	0,0	-1,3
2.6 Leather and leather products	0,51	119,6	114,4	113,4	-0,9	-5,2
2.7 Footwear	0,73	116,7	115,7	115,7	0,0	-0,9
2.8 Wood and wood products	0,71	117,9	121,6	121,8	+0,2	+3,3
Sawmilling and planing of wood	0,38	93,4	98,0	98,0	0,0	+4,9
Products of wood, cork and plaiting materials	0,33	144,4	147,0	147,5	+0,3	+2,1
2.9 Paper, paper products and printing	3,57	115,7	111,6	112,3	+0,6	-2,9
Paper and paper products	1,88	115,3	109,6	110,2	+0,5	-4,4
Publishing and printing	1,69	116,3	113,9	114,7	+0,7	-1,4
2.10 Products of petroleum and coal	1,32	105,3	112,4	111,4	-0,9	+5,8
2.11 Chemicals and chemical products	12,81	125,4	130,9	130,2	-0,5	+3,8
Basic chemicals	6,30	130,2	141,1	141,0	-0,1	+8,3
Fertilizers	0,32	141,1	141,2	141,8	+0,4	+0,5
Other basic chemicals	5,98	129,6	141,0	140,9	-0,1	+8,7
Compounded chemical products	6,51	120,5	120,8	119,6	-1,0	-0,7
Pharmaceutical products	2,60	119,9	125,5	123,2	-1,8	+2,8
Other compounded chemical products	3,91	121,0	117,8	117,3	-0,4	-3,1

Table 13 - Production Price Index for imported commodities according to group (concluded)

Base : 2000 = 100

Origin/Group	Weight	Indices			% -change between	
		May 2004	Apr 2005	May 2005	Apr 2005 and May 2005	May 2004 and May 2005
2.12 Rubber and plastic products	2,07	107,1	111,1	111,9	+0,7	+4,5
Rubber products	0,92	107,0	107,4	109,1	+1,6	+2,0
Plastic products	1,15	107,1	114,0	114,0	0,0	+6,4
2.13 Non-metallic mineral products	1,57	119,4	119,5	119,7	+0,2	+0,3
Glass and glass products	0,47	114,1	108,0	108,2	+0,2	-5,2
Other	1,10	121,8	124,6	124,7	+0,1	+2,4
2.14 Basic metals	3,35	111,0	115,9	116,6	+0,6	+5,0
Ferrous	1,60	121,4	126,7	127,6	+0,7	+5,1
Non-ferrous	1,75	101,0	105,7	106,1	+0,4	+5,0
2.15 Metal products	2,09	126,1	124,7	125,1	+0,3	-0,8
Structural metal products	0,18	100,8	103,0	101,8	-1,2	+1,0
Other	1,91	128,4	126,7	127,2	+0,4	-0,9
2.16 Non-electrical machinery and equipment	17,02	119,6	115,7	116,2	+0,4	-2,8
General purpose machinery	6,50	124,9	122,8	123,1	+0,2	-1,4
Special purpose machinery	9,36	115,6	110,4	111,0	+0,5	-4,0
Household appliances	1,16	121,0	118,4	118,9	+0,4	-1,7
2.17 Office, accounting and computing machinery	5,18	85,9	73,6	74,4	+1,1	-13,4
2.18 Electrical machinery and apparatus	3,41	114,3	110,8	111,6	+0,7	-2,4
Electric motors, generators and transformers	0,73	101,4	102,4	102,4	0,0	+1,0
Electricity distribution and control apparatus	1,23	115,3	106,2	107,4	+1,1	-6,9
Insulated wire and cable	0,22	152,1	152,0	150,6	-0,9	-1,0
Other	1,23	114,2	113,2	114,3	+1,0	+0,1
2.19 Radio, television and communication equipment and apparatus	5,73	99,7	99,3	96,3	-3,0	-3,4
2.20 Medical, precision and optical instruments	3,67	114,8	114,3	114,9	+0,5	+0,1
Medical appliances and instruments for measuring, checking, testing and navigating	3,05	112,5	112,8	113,5	+0,6	+0,9
Other, including watches and clocks	0,62	126,1	121,5	122,0	+0,4	-3,3
2.21 Transport equipment	14,93	126,1	125,6	126,1	+0,4	0,0
Motor vehicles, parts and accessories	13,08	128,1	128,5	128,9	+0,3	+0,6
Motor vehicles	2,22	103,9	102,9	102,9	0,0	-1,0
Bodies, trailers and semi-trailers	0,15	117,0	117,0	117,0	0,0	0,0
Parts and accessories	10,71	132,4	133,1	133,7	+0,5	+1,0
Other transport equipment	1,85	108,8	102,8	103,3	+0,5	-5,1
2.22 Furniture	0,31	100,5	101,1	101,5	+0,4	+1,0
2.23 Other manufactures	1,28	113,3	109,3	109,4	+0,1	-3,4
3. Electricity, Gas Steam and Water	-	-	-	-	-	-
3.1 Electricity	-	-	-	-	-	-
3.2 Gas, Steam and water	-	-	-	-	-	-

Table 14 - Production Price Index for exported commodities according to group

Base : 2000 = 100

Origin/Group	Weight	Indices			% change between	
		May 2004	Apr 2005	May 2005	Apr 2005 and May 2005	May 2004 and May 2005
All groups	100,00	119,8	125,9	126,4	+0,4	+5,5
1. Agriculture, Forestry, Fishing and Mining	30,30	117,2	125,5	126,7	+1,0	+8,1
1.1 Agriculture	5,00	96,5	85,2	83,3	-2,2	-13,7
1.1.1 Food	4,89	93,6	82,1	80,2	-2,3	-14,3
Grain	2,03	130,8	102,9	101,1	-1,7	-22,7
Sugar cane	-	-	-	-	-	-
Oil seeds	-	-	-	-	-	-
Vegetables and dried beans	0,44	100,0	100,0	100,0	0,0	0,0
Fruit	2,08	52,6	52,6	52,7	-4,2	+0,2
Meat	0,11	73,4	66,1	66,1	0,0	-9,9
Milk and eggs	0,01	150,0	119,7	119,7	0,0	-20,2
Other	0,22	-	-	-	-	-
1.1.2 Other agriculture	0,11	135,6	126,5	124,0	-2,0	-8,6
1.2 Forestry	0,11	100,0	100,0	100,0	0,0	0,0
1.3 Fishing	0,18	127,6	138,5	138,8	+0,2	+8,8
1.4 Mining and quarrying	25,01	120,8	133,0	134,8	+1,4	+11,6
Coal	6,79	144,0	174,5	178,7	+2,4	+24,1
Metal ores	12,26	119,6	123,8	124,9	+0,9	+4,4
Other minerals	5,96	97,9	105,6	106,2	+0,6	+8,5
2. Manufacturing	69,70	120,9	126,0	126,2	+0,2	+4,4
2.1 Food	5,40	117,2	114,2	114,7	+0,4	-2,1
Meat	0,62	118,9	118,3	118,2	-0,1	-0,6
Fresh meat	0,20	106,4	104,1	103,9	-0,2	-2,3
Meat products	0,42	125,6	125,9	125,9	0,0	+0,2
Fish and fish products	0,69	109,9	103,5	104,0	+0,5	-5,4
Fruit and vegetable products	1,41	111,3	107,8	108,0	+0,2	-3,0
Fats and oils	0,24	127,5	118,5	120,5	+1,7	-5,5
Milk products	0,19	124,8	127,9	127,9	0,0	+2,5
Grain mill products	0,36	122,8	117,9	117,7	-0,2	-4,2
Sugar	1,38	127,2	127,2	127,2	0,0	0,0
Coffee and tea	0,03	134,2	151,7	152,4	+0,5	+13,6
Other	0,48	121,9	120,2	122,9	+2,2	+0,8
2.2 Beverages	1,57	112,9	113,5	113,5	0,0	+0,5
Alcoholic	1,44	113,9	114,6	114,6	0,0	+0,6
Non-alcoholic	0,13	100,8	100,8	100,8	0,0	0,0
2.3 Tobacco products	0,16	105,8	104,9	104,9	0,0	-0,9
2.4 Textiles and made-up goods	1,38	142,1	128,4	128,4	0,0	-9,6
Spinning, weaving and finishing of textiles	0,96	156,6	136,2	136,2	0,0	-13,0
Other textiles	0,42	108,3	109,9	109,9	0,0	+1,5
2.5 Wearing apparel	0,65	110,2	107,9	107,9	0,0	-2,1
Knitted and crocheted fabrics and articles	0,13	118,6	118,3	118,3	0,0	-0,3
Wearing apparel	0,52	108,1	105,3	105,3	0,0	-2,6
Men's and boys' clothing	0,33	112,4	109,1	109,1	0,0	-2,9
Women's and girls' clothing	0,16	112,4	109,1	109,1	0,0	-2,9
Other, including articles of fur	0,03	101,4	101,4	101,4	0,0	0,0
2.6 Leather and leather products	0,69	94,3	103,5	103,5	0,0	+9,8
2.7 Footwear	0,12	132,7	146,7	146,7	0,0	+10,6
2.8 Wood and wood products	0,84	155,7	160,0	160,0	0,0	+2,8
Sawmilling and planing of wood	0,53	176,0	181,2	181,2	0,0	+3,0
Products of wood, cork and plaiting materials	0,31	121,5	124,2	124,2	0,0	+2,2
2.9 Paper, paper products and printing	3,70	97,8	97,6	97,6	0,0	-0,2
Paper and paper products	3,24	96,7	95,8	95,8	0,0	-0,9
Publishing and printing	0,46	106,8	110,9	110,9	0,0	+3,8
2.10 Products of petroleum and coal	3,20	115,6	157,3	153,5	-2,4	+32,8
2.11 Chemicals and chemical products	9,41	123,1	124,6	124,6	0,0	+1,2
Basic chemicals	6,68	127,0	131,0	131,0	0,0	+3,1
Fertilizers	0,91	120,1	107,0	107,0	0,0	-10,9
Other basic chemicals	5,77	128,1	134,8	134,8	0,0	+5,2
Compounded chemical products	2,73	112,8	108,6	108,6	0,0	-3,7
Pharmaceutical products	0,36	144,5	121,9	121,9	0,0	-15,6
Other compounded chemical products	2,37	108,3	106,9	106,9	0,0	-1,3

Table 14 - Production Price Index for exported commodities according to group (concluded)

Base : 2000 = 100

Origin/Group	Weight	Indices			% -change between	
		May 2004	Apr 2005	May 2005	Apr 2005 and May 2005	May 2004 and May 2005
2.12 Rubber and plastic products	1,02	121,2	118,8	118,8	0,0	-2,0
Rubber products	0,51	142,0	137,3	137,3	0,0	-3,3
Plastic products	0,51	99,4	99,5	99,5	0,0	+0,1
2.13 Non-metallic mineral products	0,87	117,3	122,2	123,0	+0,7	+4,9
Glass and glass products	0,23	117,9	118,7	118,9	+0,2	+0,8
Other	0,64	117,2	123,6	124,6	+0,8	+6,3
2.14 Basic metals	22,75	129,0	139,3	139,9	+0,4	+8,4
Ferrous	10,75	153,5	158,5	157,1	-0,9	+2,3
Non-ferrous	12,00	107,0	122,1	124,5	+2,0	+16,4
2.15 Metal products	2,09	131,6	135,0	136,9	+1,4	+4,0
Structural metal products	1,02	135,5	137,1	137,5	+0,3	+1,5
Other	1,07	127,1	132,1	135,5	+2,6	+6,6
2.16 Non-electrical machinery and equipment	5,61	121,7	119,5	119,8	+0,3	-1,6
General purpose machinery	2,25	115,0	114,6	114,8	+0,2	-0,2
Special purpose machinery	3,09	126,9	123,4	123,8	+0,3	-2,4
Household appliances	0,27	119,7	119,6	119,6	0,0	-0,1
2.17 Office, accounting and computing machinery	0,52	100,0	100,0	100,0	0,0	0,0
2.18 Electrical machinery and apparatus	1,13	116,2	115,5	116,8	+1,1	+0,5
Electric motors, generators and transformers	0,17	130,6	133,7	140,3	+4,9	+7,4
Electricity distribution and control apparatus	0,23	118,6	119,6	120,6	+0,8	+1,7
Insulated wire and cable	0,15	128,6	123,6	123,6	0,0	-3,9
Other	0,58	108,0	106,7	106,9	+0,2	-1,0
2.19 Radio, television and communication equipment and apparatus	0,64	109,3	105,4	105,0	-0,4	-3,9
2.20 Medical, precision and optical instruments	0,54	127,9	129,0	129,0	0,0	+0,9
Medical appliances and instruments for measuring, checking, testing and navigating	0,46	131,4	132,8	132,8	0,0	+1,1
Other, including watches and clocks	0,08	107,6	106,5	106,5	0,0	-1,0
2.21 Transport equipment	4,26	111,7	112,4	112,6	+0,2	+0,8
Motor vehicles, parts and accessories	3,40	113,8	114,6	114,9	+0,3	+1,0
Motor vehicles	1,16	100,9	102,6	102,6	0,0	+1,7
Bodies, trailers and semi-trailers	0,86	100,7	100,8	100,8	0,0	+0,1
Parts and accessories	1,38	133,4	133,8	134,5	+0,5	+0,8
Other transport equipment	0,86	103,6	103,6	103,7	+0,1	+0,1
2.22 Furniture	1,78	100,2	100,2	100,2	0,0	0,0
2.23 Other manufactures	1,37	98,5	99,0	99,2	+0,2	+0,7
3. Electricity, Gas Steam and Water	-	-	-	-	-	-
3.1 Electricity	-	-	-	-	-	-
3.2 Gas, Steam and water	-	-	-	-	-	-

Table 15 - Production Price Index for materials used in certain industries

Base : 2000 = 100

Industry	Indices			% -change between	
	May 2004	Apr 2005	May 2005	Apr 2005 and May 2005	May 2004 and May 2005
Building and construction	139,7	149,2	150,3	+0,7	+7,6
Building industries	138,2	146,5	147,7	+0,8	+6,9
Civil engineering	147,0	157,2	157,5	+0,2	+7,1
Mechanical engineering	131,1	141,7	144,6	+2,0	+10,3
Electrical engineering	129,5	139,4	141,3	+1,4	+9,1

Table 16 - Production Price Index for selected materials

Base : 2000 = 100

Type of materials	Indices			% -change between	
	May 2004	Apr 2005	May 2005	Apr 2005 and May 2005	May 2004 and May 2005
Wool, auction prices, 18 types	136,4	129,3	121,3	-6,2	-11,1
Coal, bituminous	136,1	166,8	167,9	+0,7	+23,4
Coal, bituminous - for local sales	174,3	191,8	191,9	+0,1	+10,1
- Cobbles, grade A	110,5	192,0	185,1	-3,6	+67,5
- Cobbles, grade B	88,8	154,5	148,9	-3,6	+67,7
- Large nuts, grade A	152,3	152,4	152,4	0,0	+0,1
- Large nuts, grade B	169,0	171,9	171,7	-0,1	+1,6
- Small nuts, grade A	188,5	200,8	198,7	-1,0	+5,4
- Small nuts, grade B	180,3	192,1	192,9	+0,4	+7,0
- Peas, grade A	168,5	185,2	177,2	-4,3	+5,2
- Peas, grade B	153,8	168,6	168,4	-0,1	+9,5
Anthracite - for local sales					
- Grade SP	100,9	100,9	100,9	0,0	0,0
- Grade A	100,7	100,7	100,7	0,0	0,0
Wood products, excluding minewood	123,9	134,8	134,9	+0,1	+8,9
SA Pine, kiln dried	174,2	191,9	191,9	0,0	+10,2
Paper, newsprint	144,7	165,4	165,4	0,0	+14,3
Kraft paper	135,8	132,4	132,6	+0,2	-2,4
Boxes, corrugated cardboard	127,4	125,3	125,3	0,0	-1,6
Leather, bovine hide	117,8	111,7	111,7	0,0	-5,2
Rubber crude	118,0	120,9	120,9	0,0	+2,5
- Synthetic	135,8	141,6	141,6	0,0	+4,3
- Synthetic - Local	135,8	141,6	141,6	0,0	+4,3
Tyres and tubes	139,5	146,7	147,4	+0,5	+5,7
Plastic bottles	137,3	148,7	148,7	0,0	+8,3
Plastic, bulk forms	142,7	149,1	149,0	-0,1	+4,4
Sulphuric acid	116,5	116,5	116,5	0,0	0,0
Paints	138,2	142,4	142,1	-0,2	+2,8
Foam insulation materials	120,1	150,1	150,1	0,0	+25,0
- Polyurethane	120,1	150,1	150,1	0,0	+25,0
Petro-chemical building materials	124,5	131,2	131,8	+0,5	+5,9
Waterproofing	135,9	140,5	140,6	+0,1	+3,5
Resilient floor coverings	143,7	146,6	147,4	+0,5	+2,6
Petrol, 93 octane - Coast	130,8	151,3	161,7	+6,9	+23,6
- Witwatersrand	130,8	151,3	161,7	+6,9	+23,6
Diesel oil - Coast and Witwatersrand	117,2	165,9	167,7	+1,1	+43,1
- Retail Metropolitan and other urban areas	206,0	264,2	269,7	+2,1	+30,9
- Retail Metropolitan areas	158,0	203,0	207,5	+2,2	+31,3
Transformer oil	168,9	199,0	189,9	-4,6	+12,4
Bitumen	137,7	154,4	162,7	+5,4	+18,2
Modified Bitumen sheeting	120,0	123,0	123,0	0,0	+2,5
Bitumen and Acrylic Emulsion	124,2	131,1	131,1	0,0	+5,6
Tar	119,6	131,1	140,9	+7,5	+17,8
Bricks - Stock	154,7	185,0	185,0	0,0	+19,6
- Face	144,6	167,4	167,4	0,0	+15,8
Cement building blocks	171,4	187,5	187,5	0,0	+9,4
Sand	138,3	140,6	140,6	0,0	+1,7
Aggregated crushed stone	158,2	170,9	178,8	+4,6	+13,0
Ordinary and extended cement	161,3	180,1	179,4	-0,4	+11,2
Natural stone, cut and sawn	111,5	111,5	111,5	0,0	0,0
Glass, for building industry	119,6	102,9	103,9	+1,0	-13,1
Gypsum board	146,7	150,7	150,7	0,0	+2,7
Drop in ceiling tiles-gypsum	126,6	131,6	131,6	0,0	+3,9
Drop in ceiling tiles-masonite	144,5	147,9	153,5	+3,8	+6,2
Profiled aluminium roofing	135,4	134,1	134,1	0,0	-1,0
Extruded aluminium section	151,1	150,3	150,3	0,0	-0,5

Table 16 - Production Price Index for selected materials (concluded)

Base : 2000 = 100

Type of materials	Indices			% -change between	
	May 2004	Apr 2005	May 2005	Apr 2005 and May 2005	May 2004 and May 2005
Ironmongery	117,7	119,3	119,5	+0,2	+1,5
Self-Adhesive sheeting	118,6	118,6	118,6	0,0	0,0
Joint Sealants	137,8	137,8	137,8	0,0	0,0
Flush doors	138,7	145,6	145,6	0,0	+5,0
Drainage	121,7	123,2	123,2	0,0	+1,2
Plumbing	122,4	128,3	128,3	0,0	+4,8
Ceramic and encaustic wall and floor tiles and mosaics	105,2	109,2	109,3	+0,1	+3,9
Ceiling materials	162,2	168,8	168,8	0,0	+4,1
Partitioning materials	162,2	168,8	168,8	0,0	+4,1
Fibrous insulation - Preformed pipe sections	132,3	140,8	140,8	0,0	+6,4
- Batten board	143,7	153,8	153,8	0,0	+7,0
- Mattresses	143,0	154,8	154,8	0,0	+8,3
- Ceiling insulation	121,3	127,1	127,1	0,0	+4,8
Insulator, porcelain	107,8	111,7	111,7	0,0	+3,6
Containers, glass	139,9	142,6	142,6	0,0	+1,9
Billets, mild steel	142,2	184,4	184,4	0,0	+29,7
Angles, mild steel	139,1	159,5	164,8	+3,3	+18,5
Structural steel, unworked	175,3	172,3	173,0	+0,4	-1,3
Structural steel products	157,8	177,5	178,6	+0,6	+13,2
Reinforcing steel	179,7	201,3	201,3	0,0	+12,0
Plate, mild steel	160,9	173,7	169,8	-2,2	+5,5
Sheet, uncoated	179,2	173,2	173,2	0,0	-3,3
Sheet, galvanized	160,9	173,7	169,8	-2,2	+5,5
Tinplate	136,4	136,4	155,0	+13,6	+13,6
Steel tubes, pipes and fittings	108,3	115,9	116,4	+0,4	+7,5
Copper, basic forms	146,2	172,7	172,7	0,0	+18,1
Aluminium - Anodising	113,7	120,5	120,5	0,0	+6,0
- Basic forms	109,2	114,5	113,0	-1,3	+3,5
- Extruded products	125,7	150,3	150,3	0,0	+19,6
- Sheetting	105,4	108,3	109,0	+0,6	+3,4
Bearings, ball and roller	149,9	152,0	151,1	-0,6	+0,8
Electrical contracting materials	129,7	136,3	139,7	+2,5	+7,7
Construction machinery (excluding trucks)	116,3	114,5	114,4	-0,1	-1,6
Trucks	133,6	133,2	133,7	+0,4	+0,1
Trucks and buses	131,6	131,6	131,9	+0,2	+0,2
Civil engineering plant	132,4	132,5	133,8	+1,0	+1,1
Diesel for the civil engineering industry	158,0	203,0	207,5	+2,2	+31,3
Mining machinery	119,2	131,8	129,8	-1,5	+8,9
Rubber industry's indices:					
Natural rubber (imported)	113,9	109,0	103,7	-4,9	-9,0
Carbon black - N774 (local)	115,8	121,6	121,6	0,0	+5,0
- N660	115,7	133,2	133,2	0,0	+15,1
Coumarone indene resin (imported)	129,5	121,4	121,4	0,0	-6,3
Synthetic rubber - 1502	139,5	159,7	159,7	0,0	+14,5
- 1712	136,8	154,0	154,0	0,0	+12,6
Polybutadiene	147,9	158,1	158,1	0,0	+6,9
Processing oil	65,2	69,1	69,1	0,0	+6,0
Bead wire	102,6	118,9	118,9	0,0	+15,9
Cement (Retail price)	145,3	161,5	159,9	-1,0	+10,0
Building boards	119,8	130,0	130,1	+0,1	+8,6
Concrete roof tiles	163,6	148,7	148,7	0,0	-9,1
Fibre cement roof sheet	156,8	150,7	157,9	+4,8	+0,7
Coated profiled GMS sheeting (roofing)	160,9	173,7	169,8	-2,2	+5,5
Imported Meranti	69,3	93,6	93,6	0,0	+35,1
Vinyl tiles flooring	134,8	142,9	142,9	0,0	+6,0
Vinyl sheeting (flooring)	123,0	130,4	130,4	0,0	+6,0
Woven needle punch carpeting	128,8	139,4	139,4	0,0	+8,2
Lever locks	121,8	123,4	123,4	0,0	+1,3
Hinges	140,0	139,3	139,6	+0,2	-0,3
Cylinder lock set	161,3	161,3	161,3	0,0	0,0
Aluminium lever furniture	110,4	110,4	110,4	0,0	0,0
Small steel sections	116,0	116,0	116,0	0,0	0,0
Stainless steel products, flat rolled	134,9	136,8	136,1	-0,5	+0,9
White glazed ceramic tiles	122,4	128,6	128,6	0,0	+5,1
Tile adhesives	148,3	146,3	146,3	0,0	-1,3
PVC Pipes	124,9	137,3	137,3	0,0	+9,9
Concrete pipes	129,3	129,3	129,3	0,0	0,0
Wash and basin	124,1	126,8	126,8	0,0	+2,2
Water-closet system (WC's)	117,0	118,6	118,6	0,0	+1,4
Copper Piping	143,1	157,0	155,7	-0,8	+8,8
Sementitious paints	161,2	172,4	172,4	0,0	+6,9
Enamel paints	138,1	144,9	143,1	-1,2	+3,6
Glass for the building industry - cut to size	153,7	166,0	166,0	0,0	+8,0
Profiled aluminium roofing - distributor level	122,1	128,8	128,8	0,0	+5,5
Extruded aluminium - distributor level	151,9	151,9	151,9	0,0	0,0



## ADDITIONAL INFORMATION

### EXPLANATORY NOTES

- Introduction** 1 This publication contains results of the monthly Surveys of Prices of Locally Produced Commodities (which are locally sold or exported) and Imported Commodities. These indices for commodities are classified to designated industries of the South African economy. They are calculated on the base 2000=100.
- Scope of the PPI survey** 2 The indices are compiled on a gross industry basis, i.e. each index relates to those articles, which are produced, imported and exported by the designated industries of the South African economy. Selling prices are collected from manufacturers, importers and Exporters.
- Classification** 3 The 1993 edition of the Standard Industrial Classification of all Economic Activities (SIC), Fifth edition, Report No. 09-90-02, was used to classify the statistical units in the survey. The SIC is based on the 1990 International Standard Industrial Classification of all Economic Activities (ISIC) with suitable adaptations for local conditions. Statistics in this publication are presented at SIC subdivision level.
- 4 This publication presents information, which measures changes in prices of products, that are produced, imported or exported by establishments (branches). It excludes semi-processed products, which have been produced by the establishment within the manufacturing division and carried over to other establishments within the manufacturing division for further processing.
- Statistical unit** 5 The statistical unit is the establishment (branch), which is the smallest economic unit that functions as a separate entity. Each statistical unit is classified to an industry according to the classification of the products that the unit manufactures, imports or exports.
- Survey methodology and design** 6 Different phases of sampling take place. Firstly, a sample of products, based on the information collected through the Manufacturing census of 1996 and 1995/96 information on imports and exports received from Customs and Excise, SARS is designed and drawn. An indicator product is selected purposively within each product group. To be selected, a product should be part of the top 80% of products manufactured, imported or exported in that product group. Furthermore, it must be possible to obtain price quotations for the relevant product during the whole year. The sample of indicator products is revised every five years at which stage the weights of the indicator products/groups are also revised.
- This survey is collected by mail from an original sample of approximately 3 500 manufacturers, 3 500 exporters and 3 500 importers. The indices are based on producer prices at the point of production in the case of commodities produced in South Africa, and wholesale prices “ex-warehouse”, in the case of imported commodities. Prices “delivered” or “free on rail” are accepted if this is the normal basis of quotation.
- Currently, an average of 20 000 price quotations are collected each month from approximately 5 500 outlets by means of 6 000 questionnaires. The indices are based on retail trade and service prices.
- Pricing basis** 7 Price information refers to the first seven days of the relevant month, except in the case of mining and most of the agricultural products, where it refers to the average price for the month. The average price of imported crude petroleum, used in the compilation of the import component of the PPI, is calculated as the value (in Rands) divided by the quantity of imported crude petroleum for the relevant month. **The prices of all items exclude Value Added Tax (VAT).**

- Weighting basis** 8 The index is a fixed weight index as the weights are determined in the base period and they do not change until the next base period. The commodities directly represented in the index, were selected on the basis of the values of sales of products –
- produced during the 1995-96 financial year for locally produced commodities;
  - exported during 1996; and
  - imported during 1996.

These commodities constitute approximately 80 per cent of the total value of production/imports/exports during the relevant year as indicated above. Weights were allocated to each product in accordance with the value of sales for each item during the 1995/96 financial year. The basis on which the weighting structure of each main PPI component, indicated in the tables published in this statistical release, was calculated, is indicated in table C.

**Table C– Basis on which the weighting structure of each PPI table is based**

Number of table in this statistical release	PPI component	Basis for weighting structure
Table 10	Commodities for South African consumption	Sales value of South African production minus exports, plus imports
Table 11	Total output of South African industry groups	Sales value of South African production
Table 12	Output of South African industry groups for South African consumption	Sales value of South African production minus exports
Table 13	Imported commodities	Sales value of imported commodities
Table 14	Exported commodities	Sales value of exported commodities
Table 15	Materials used in certain industries	Value of materials used

- Processing of price information** 9 The prices that are quoted for the different products are checked. If the price difference between two successive periods are outside the specified range of increase (+10%) or decreases (-5%), the current price levels are confirmed with the relevant respondents through a telephone inquiry.
- Calculating product price indices** 10 Price relatives are calculated for each product per respondent by dividing the current prices by the previously quoted price. The price relative for each product is calculated by means of the geometric mean of the price relatives for each respondent. This price relative for each product is then applied to the product index for the previous month in order to obtain a product index for the relevant month.
- Calculating group price indices** 11 Group price indices are calculated by weighting product indices with the relevant product weight, according to each group's (local, import, export) weighting structure, using the Laspeyres index formula.
- Contributions of specific products to the total PPI** 12 The monthly (annual) contribution of a specific product or group of products to the total PPI is calculated by multiplying the weight of this product or group of products with the monthly (annual) change in the index for this product or group of products, divided by the index for 'All groups'.

<b>Price indices for diesel</b>	<b>13</b>	<p>The price index for diesel (Coast and Witwatersrand) is based on the refinery prices of diesel.</p> <p>The retail price index for diesel is based on retail prices obtained from a sample of 84 retail outlets throughout the country. The diesel indices for the different areas are weighted according to the diesel volume distribution as obtained from the South African Petroleum Industry Association (SAPIA).</p> <p>The diesel for the civil engineering industry index is based on retail prices obtained from a sample of only 48 retail outlets in the historical metropolitan areas of the CPI. The diesel indices for the different areas are weighted according to the diesel volume distribution in the relevant areas as obtained from the South African Petroleum Industry Association (SAPIA).</p>										
<b>Reliability of estimates</b>	<b>14</b>	<p>Inaccuracies may occur because of imperfections in reporting by establishment (branch) and errors made in collection and processing of the data. Inaccuracies of this kind are referred to as non-sampling errors. Every effort is made to reduce non-sampling errors to a minimum by careful designing the questionnaires, editing data and efficient operating procedures.</p>										
<b>Related publications</b>	<b>15</b>	<p>Users may also wish to refer to the following publications, which are available from Stats SA -</p> <ul style="list-style-type: none"> <li>• Bulletin of Statistics; and</li> <li>• SA Statistics.</li> </ul>										
<b>Unpublished statistics</b>	<b>16</b>	<p>In some cases, Stats SA can also make available formation, which is not published. This information can be made available in one or more of the following ways: computer printout, diskette or CD. Generally a fee is levied for providing unpublished information.</p>										
<b>Symbols and abbreviations</b>	<b>17</b>	<table border="0"> <tr> <td>Stats SA</td> <td>Statistics South Africa</td> </tr> <tr> <td>..</td> <td>not available</td> </tr> <tr> <td>-</td> <td>nil or not applicable</td> </tr> <tr> <td>*</td> <td>revised since previous publication</td> </tr> <tr> <td>avg</td> <td>average</td> </tr> </table>	Stats SA	Statistics South Africa	..	not available	-	nil or not applicable	*	revised since previous publication	avg	average
Stats SA	Statistics South Africa											
..	not available											
-	nil or not applicable											
*	revised since previous publication											
avg	average											

**GLOSSARY**

<b>Annual percentage change</b>	The annual percentage change is the change in the index of the relevant month of the current year compared with the index of the same month in the previous year expressed as a percentage and is generally accepted as the yardstick of PPI inflation.
<b>Overall average annual percentage change</b>	The overall average annual percentage change is the change in the average index of one year compared with the average index of the previous year expressed as a percentage.
<b>Contribution of specific products to the total PPI</b>	The monthly (annual) contribution of a specific product or group of products to the total PPI is calculated by multiplying the weight of the index with the monthly (annual) change of the index divided by the index for "All Items".
<b>Establishment</b>	An establishment (branch) is the smallest economic unit that functions as a separate entity.
<b>Indicator products</b>	Indicator products are those products whose sale value represent 80% of the total value of sales (turnover) in an industrial subgroup.
<b>Monthly percentage change</b>	The monthly percentage change is the change in the index of the relevant month compared to the index of the previous month expressed as a percentage.
<b>Weights</b>	The weights are the relevant importance of the indicator products in that subgroup. The weight of a product is calculated by dividing the actual value of sales of the relevant indicator product by the total value of sales in that subgroup.

## FOR MORE INFORMATION

Stats SA publishes approximately 300 different releases each year. It is not economically viable to produce them in more than one of South Africa's eleven official languages. Since the releases are used extensively, not only locally but also by international economic and social-scientific communities, Stats SA releases are published in English only.

Stats SA has copyright on this publication. Users may apply the information as they wish, provided that they acknowledge Stats SA as the source of the basic data wherever they process, apply, utilise, publish or distribute the data: and also that they specify that the relevant application and analysis (where applicable) result from their own processing of data.

### Advance release calendar

An advance release calendar is disseminated on [www.statssa.gov.za](http://www.statssa.gov.za)

### Stats SA products

A complete set of Stats SA publications is available at the Stats SA Library and the following libraries -

National Library of South Africa, Pretoria Division  
National Library of South Africa, Cape Town Division  
Natal Society Library, Pietermaritzburg  
Library of Parliament, Cape Town  
Bloemfontein Public Library  
Johannesburg Public Library  
Eastern Cape Library Services, King William's Town  
Central Regional Library, Polokwane  
Central Reference Library, Nelspruit  
Central Reference Collection, Kimberley  
Central Reference Library, Mmabatho

Stats SA also provides a subscription service.

### Electronic services

A large range of data are available via on-line services, diskette and computer printouts. For more details about our electronic data services, contact (012) 310 8600/8390/8351/4892/8496/8095.

You can visit us on the Internet at: [www.statssa.gov.za](http://www.statssa.gov.za)

### Enquiries

Technical enquiries: Harry Thema  
(012) 310 8170

Telephone number: (012) 310 8151/8077/8421/8196 (survey area)  
(012) 310 8600/8390/8351/4892/8496/8095 (user information services)  
(012) 310 8161 (orders)  
(012) 310 8490 (library)

Fax number: (012) 328 3932

email: [ppi@statssa.gov.za](mailto:ppi@statssa.gov.za) (technical enquiries)  
[info@statssa.gov.za](mailto:info@statssa.gov.za) (user information services)  
[distribution@statssa.gov.za](mailto:distribution@statssa.gov.za) (orders)

Postal address: Private Bag X 44, Pretoria, 0001

Produced by Stats SA