

Production Price Index (PPI)

P0142.1

March 2001

Embargo: 11:30

Date: 25 April 2001

Read the following [notice](#) with regard to the eleven official languages

This data in this statistical release adheres to the Special Data Dissemination Standard (SDDS) of the International Monetary Fund (IMF), which sets out standards on coverage, periodicity and timeliness of data; access by the public; integrity; and quality of the disseminated data.

© Copyright,2001

Users may apply or process this data, provided Statistics South Africa is acknowledged as the original source of the data; that it is specified that the application and/or analysis is the result of the user's independent processing of the data; and that neither the basic data nor any reprocessed version or application thereof may be sold or offered for sale in any form whatsoever.

P Lehohla

Statistician-General: Statistics South Africa

A complete set of Stats SA publications is available in the Stats SA Library,
and in the following public libraries:

State Library, Pretoria	Library of Parliament, Cape Town
South African Library, Cape Town	Bloemfontein Public Library
Natal Society Library, Pietermaritzburg	Johannesburg Public Library
Central Reference Library, Mmabatho	Central Regional Library, Pietersburg
Central Reference Library, Nelspruit	Central Reference Collection, Kimberley
Eastern Cape Library Services, King William's Town	

Contents

Table 1	The Production Price Index (PPI) and the annual percentage change in the PPI on a monthly basis
Table 2	Contributions to the annual percentage change in the PPI for all commodities for consumption in South Africa according to their origin
Table 3	Contributions to the monthly percentage change in the PPI for all commodities for consumption in South Africa according to their origin
Table 4	Contributions to the annual percentage change in the PPI for all commodities for consumption in South Africa according to group
Table 5	Contributions to the monthly percentage change in the PPI for all commodities for consumption in South Africa according to group
Table 6	Contributions to the annual percentage change in the PPI for locally produced commodities for South African consumption according to group
Table 7	Contributions to the monthly percentage change in the PPI for locally produced commodities for South African consumption according to group
Table 8	Contributions to the annual percentage change in the PPI for imported commodities according to group
Table 9	Contributions to the monthly percentage change in the PPI for imported commodities according to group
Table 10	PPI for consumption in South Africa and percentage change according to origin and group
Table 11	PPI for total output of South African industry groups and percentage change according to destination and group
Table 12	PPI for output of South African industry groups for South African consumption and percentage change according to group

Table 13	PPI for imported commodities and percentage change according to group
Table 14	PPI for exported commodities and percentage change according to group
Table 15	PPI and percentage change for materials used in certain industries
Table 16	PPI and percentage change for selected materials
Table 17	Seasonally adjusted PPI .
Additional information	
	Explanatory notes
	Glossary
For more information	

KEY FIGURES AS AT MARCH 2001

Base: 2000 = 100

	Indices			Percentage change between		
	Mar 2000	Feb 2001	Mar 2001	Feb 2001 and Mar 2001		Mar 2000 and Mar 2001
				Actual %	Seasonally adjusted %	Actual %
Production Price Index components						
All commodities for consumption in	96,9	105,2	105,5	+0,3	+0,5	+8,9

South Africa						
	97,3	104,5	104,6	+0,1	+0,5	+7,5
Locally produced commodities	96,1	106,9	107,9	+0,9	+0,8	+12,3
Imported commodities						
Output of South African industry	97,2	104,4	104,6	+0,2	+0,5	+7,6
Total output	97,3	104,5	104,6	+0,1	+0,5	+7,5
For South African consumption						

KEY FINDINGS AS AT MARCH 2001

Annual percentage change in the PPI for March 2001 lower at 8,9%

The Production Price Index (PPI) for all commodities for South African consumption shows an annual rate of increase of 8,9% at March 2001. This rate is 0,2 of a percentage point lower than the corresponding annual rate of 9,1% at February 2001 (cf. table 1, p. 7), mainly due to lower annual rates of increase reflected at March 2001 in the price indices for products of petroleum and coal (+20,6%) and mining and quarrying (+17,4%), than the annual rates of increase reflected at February 2001 in the price indices for products of petroleum and coal (+27,9%) and mining and quarrying (+19,3%). From February 2001 to March 2001 this index increased by 0,3% and the seasonally adjusted index increased by 0,5%.

The annual increase of 8,9% in the PPI for all commodities for South African consumption is due to annual increases in the price indices for locally produced commodities (+5,6 percentage points) and imported commodities (+3,3 percentage points). The PPI for locally produced commodities contributed less to the annual increase of 8,9% in the PPI for all commodities for South African consumption at March 2001 (+5,6 percentage points), than at February 2001 (+5,8 percentage points) (cf. table 2, p. 7).

Annual percentage change in the PPI for locally produced commodities for consumption in South Africa lower at 7,5%

The annual rate of increase in the PPI for locally produced commodities for consumption in South Africa is 7,5% at March 2001, which is 0,2 of a percentage point lower than the corresponding rate of 7,7% as at February 2001 (cf. table 1, p. 7). From February 2001 to March 2001 this index increased by 0,1% and the seasonally adjusted index increased by 0,5%.

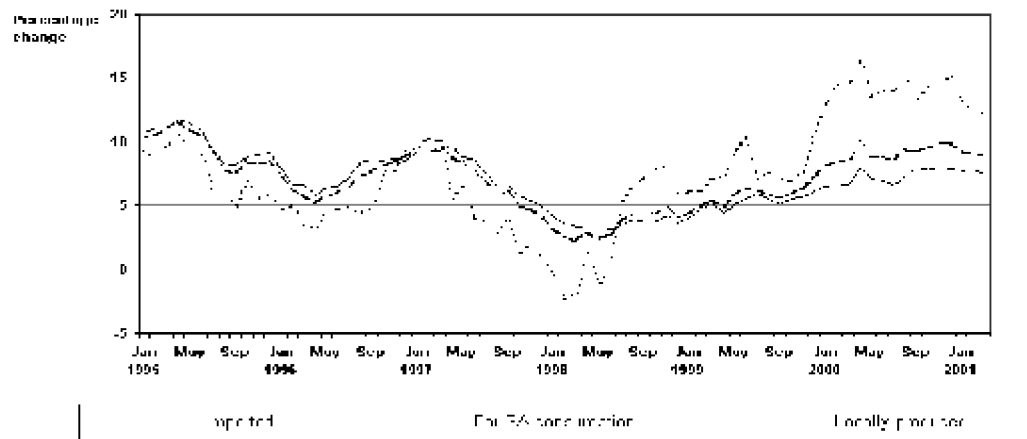
The annual increase of 7,5% in the PPI for locally produced commodities for consumption in South Africa is mainly due to annual increases in the price indices for paper, paper products and printing (+0,9 of a percentage point), transport equipment (+0,8 of a percentage point), products of petroleum and coal (+0,7 of a percentage point, mainly due to annual increases of approximately 25,6% in the average prices of petrol and diesel), chemicals and chemical products (+0,6 of a percentage point), agricultural products (+0,5 of a percentage point) and food at manufacturing (+0,5 of a percentage point) (cf. table 6, p. 9).

Annual rate of change in the PPI for imported commodities slightly lower at 12,3%

The PPI for imported commodities shows an annual rate of increase of 12,3% at March 2001. This rate is 0,1 of a percentage point lower than the corresponding annual rate of 12,4% at February 2001 (cf. table 1, p. 7). From February 2001 to March 2001 this index increased by 0,9% and the seasonally adjusted index increased by 0,8%.

The annual increase of 12,3% in the PPI for imported commodities is mainly due to annual increases in the price indices for mining and quarrying products (+2,0 percentage points, mainly due to an annual increase of 22,3% in the average price of imported crude petroleum), chemicals and chemical products (+2,0 percentage points), transport equipment (+1,8 percentage points), non-electrical machinery and equipment (+1,2 percentage points), food at manufacturing (+0,5 of a percentage point), office, accounting and computing machinery (+0,5 of a percentage point) and paper, paper products and printing (+0,4 of a percentage point) (cf. table 8, p. 10).

Figure 1 – Annual percentage change in the Production Price Index:



Source: SABS SA

Commodities for South African consumption

Contributions to monthly changes

PPI for all commodities for South African consumption

The monthly increase of 0,3% in the PPI for all commodities for South African consumption is due to monthly increases in the price indices for imported commodities (+0,2 of a percentage point) and locally produced commodities (+0,1 of a percentage point) (cf. table 3, p. 7).

PPI for locally produced commodities for consumption in South Africa

The monthly increase of 0,1% in the PPI for locally produced commodities for consumption in South Africa is due to monthly increases in the price indices for textiles and made-up goods (+0,1 of a percentage point), food at manufacturing (+0,1 of a percentage point) and "all other groups" (+0,1 of a percentage point). These increases were partially counteracted by monthly decreases in the price indices for agricultural products (-0,1 of a percentage point) and electricity (-0,1 of a percentage point) (cf. table

7, p. 9).

PPI for imported commodities

The monthly increase of 0,9% in the PPI for imported commodities is due to monthly increases in the price indices for mining and quarrying products (+0,3 of a percentage point, mainly due to a monthly increase of 3,5% in the average price of imported crude petroleum), chemicals and chemical products (+0,3 of a percentage point), non-electrical machinery and equipment (+0,1 of a percentage point), office, accounting and computing machinery (+0,1 of a percentage point), radio, TV, communication equipment and apparatus (+0,1 of a percentage point) and medical, precision and optical instruments (+0,1 of a percentage point). These increases were slightly counteracted by a monthly decrease in the price index for agricultural products (-0,1 of a percentage point) (cf. table 9, p. 10).

Monthly changes in the PPI for all commodities for South African consumption

Relatively large monthly increases occurred in the price indices for mining and quarrying products (+1,6%, mainly due to a monthly increase of 3,5% in the average price of imported crude petroleum), textiles and made-up goods (+1,3%), chemicals and chemical products (+1,0%), office, accounting and computing machinery (+1,0%), gas, steam and water (+0,8%), food at manufacturing (+0,7%), leather and leather products (+0,7%) and medical, precision and optical instruments (+0,7%). These increases were partially counteracted by monthly decreases in the price indices for electricity (-1,3%), agricultural products (-0,6%) and products of petroleum and coal (-0,2%, mainly due to a monthly decrease of 0,1% in the average prices of petrol) (cf. table 10, p. 11).

Monthly changes in the PPI for imported commodities

Relatively large monthly increases occurred in the price indices for tobacco products (+7,9%), mining and quarrying products (+2,8%, mainly due to a monthly increase of 3,5% in the average price of imported crude petroleum), chemicals and chemical products (+2,5%), beverages (+1,8%), leather and leather products (+1,3%), footwear (+1,3%), metal products (+1,1%) and office, accounting and computing machinery (+1,0%). These increases were partially counteracted by monthly decreases in the price indices for agricultural products (-1,6%), food at manufacturing (-0,4%) and basic metals (-0,1%) (cf. table 13, p. 17).

Monthly changes in the PPI for exported commodities

From February 2001 to March 2001, the PPI for exported commodities increased by 0,7%. Relatively large monthly increases occurred in the price indices for exported products of petroleum and coal (+4,4%), textiles and made-up goods (+3,2%), mining and quarrying products (+2,3%) and non-metallic mineral products (+0,8%). These increases were slightly counteracted by monthly decreases in the price indices for agricultural products (-1,1%), fishing products (-1,0%) and food at manufacturing (-0,4%) (cf.

table 14, p. 19).

ADJUSTMENT OF THE BASE PERIOD OF THE PRODUCTION PRICE INDEX TO 2000 =100

Following international practice, the base period used for the Production Price Index (PPI) has been changed from June 1995=100 to 2000 =100 with effect from February 2001. The weighting system for the new base period 2000=100 is based on 1995/96 production information of the Manufacturing industry collected through the Manufacturing census of 1996 and 1995/96 information on imports and exports received from Customs and Excise, SARS. This weighting system is the same as the one that was used for the base June 1995=100.

The change in the base period may tend to perplex many users in interpreting trends. However, it should be noted that the change is merely a change in the *level* of the indices and does not in anyway affect trends. Instead of comparing current price levels with price levels for June 1995 (which were equated to 100), current price levels are now compared with average price levels for 2000 (also equated to 100).

In any application of indices, for example, comparing the index of one month with that of another, the indices must have the same base period. An identical percentage change will be obtained between the two months, regardless of whether the base period is June 1995=100 or 2000=100. For example the annual percentage change as measured by the PPI for all commodities for South African consumption will remain the same between the two periods.

To provide users with comparable time series on this new base 2000=100, where available, indices from 1975 are included in the tables in the historical statistical release. To convert any index from the previous June 1995=100 series to the base 2000=100, it should be divided by the corresponding conversion factor indicated above each table contained in the historical statistical release. The factor is derived by dividing the annual average index for the year 2000 by the index for June 1995. (Multiplication of an index on the base 2000=100 by the relevant conversion factor will yield an index on the base June 1995=100).

The change in base from June 1995=100 to 2000=100 was effected on the basis of the cyclical nature of indices, which means that each product index of the PPI was divided by its conversion factor, retaining the weighting system, which is currently determined by using the production, import and export figures of 1995/96.

For more information see the statistical release P0142.4 for the historical figures.

Notes

Forthcoming issues	Issue	Expected date of publication
	April 2001	23 May 2001
	May 2001	27 June 2001
	June 2001	25 July 2001
	July 2001	22 August 2001
	August 2001	26 September 2001
	September 2001	24 October 2001

Purpose of the survey	The Surveys of Prices of Locally Produced commodities (which are locally sold or exported) and Imported Commodities are monthly surveys covering samples of manufacturers, exporters and importers operating in the South African economy. The results of the survey are used to compile the Production Price Index (PPI), an economic indicator, which indicates the changes in production prices of locally produced commodities (which are locally sold or exported) and imported commodities. These statistics are used by the private sector in the analysis of comparative business and industry performance, as well as for contract price adjustments.
------------------------------	--

Methodological notes	According to international best practice, the PPI is reweighted every five years. Stats SA reweighted the PPI as from June 1999 using a new basket of indicator products and their relevant weights.
-----------------------------	--

	The new baskets of indicator products manufactured and sold locally, exported and imported were compiled through various information sources. The information sources used to select the relevant indicator products in the different production industries are indicated in table B.
--	---

Table B – Information sources used to select products in the different production industries

Main products and industries	Sources

Locally produced and sold items	
Agriculture	Department of Agriculture
Fishing	Fishing Handbook, 1996
Forestry	Commercial Timber Resources and Roundwood Processing in South Africa, 1996
Mining and quarrying	Department of Minerals and Energy Affairs
Manufacturing	Stats SA, Census of Manufacturing, 1996
Electricity, gas and steam	Stats SA, Census of Electricity, Gas and Steam, 1995
Water	Department of Water Affairs and Forestry
Imported items	South African Revenue Services
Exported items	South African Revenue Services

The products were classified according to the relevant Standard Industrial Classification (SIC) subgroups. The products in each subgroup were then sorted according to their value of sales. The products contributing to the top 80% of the sales in each subgroup were selected as indicator products. These are the products for which prices will be monitored periodically by Stats SA.

The questionnaire(s) for each subgroup, which are used to collect the relevant price information from respondents, were adjusted to include the newly selected indicator products. Although the products on each questionnaire differ from the other questionnaires, their layout is identical.

For each indicator product a sample of manufacturers, importers and exporters was drawn from all the manufacturers, importers and exporters who manufacture, import or export the specific indicator product. The list of manufacturers, importers and exporters (sampling frame), from which the samples were drawn, are indicated in table C.

Table C– Sampling frame		
	Main products and industries	Sources
	Locally produced and sold products	
	Agriculture	List of fresh produce markets
	Mining and quarrying	List of mines
	Forestry	List obtained from Department of Agriculture Old sample of PPI
	Fishing	Old sample of PPI List obtained from other sources
	Manufacturing	List of manufacturers from the Census of Manufacturing, 1996 List of manufactures from trade unions
	Electricity, gas and steam	List of producers according to the Census Of Electricity, Gas and Steam, 1995
	Water	Old sample of PPI.
	Imported products	List of importers obtained from South African Revenue Services
	Exported items	List of exporters obtained from South African Revenue Services

Additional information

Explanatory Notes

Introduction	1	This publication contains results of the monthly Surveys of Prices of Locally Produced Commodities (which are locally sold or exported) and Imported Commodities. These indices for commodities are classified to designated industries of the South African economy. They are calculated on the base 2000=100.
Scope of the PPI survey	2	The indices are compiled on a gross industry basis, i.e. each index relates to those articles, which are produced, imported and exported by the designated industries of the South African economy. Selling prices are collected from manufacturers, importers and exporters.
Classification	3	The 1993 edition of the Standard Industrial Classification of all Economic Activities (SIC), Fifth edition, Report No. 09-90-02, was used to classify the statistical units in the survey. The SIC is based on the 1990 International Standard Industrial Classification of all Economic Activities (ISIC) with suitable adaptations for local conditions. Statistics in this publication are presented at SIC subdivision level.
	4	This publication presents information which measures changes in prices of products, that are produced, imported or exported by establishments (branches). It excludes semi-processed products, which have been produced by the establishment within the manufacturing division and carried over to other establishments within the manufacturing division for further processing.
Statistical unit	5	The statistical unit is the establishment (branch), which is the smallest economic unit that functions as a separate entity. Each statistical unit is classified to an industry according to the classification of the products that the unit manufactures, imports or exports.
Survey methodology and design	6	Different phases of sampling takes place. Firstly, a sample of products, based on the information collected through the Manufacturing census of 1996 and 1995/96 information on imports and exports received from Customs and Excise, SARS is designed and drawn. An indicator product is selected purposively within each product group. To be selected, a product should be part of the top 80% of products manufactured, imported or exported in that product group. Furthermore, it must be possible to obtain price quotations for the relevant product during the whole year. The sample of indicator products is revised every five years at which stage the weights of the indicator products/groups are also revised.

		This survey is collected by mail from a sample of approximately 3 500 manufacturers, 3 500 exporters and 3 500 importers. The indices are based on producer prices at the point of production in the case of commodities produced in South Africa, and wholesale prices "ex-warehouse", in the case of imported commodities. Prices "delivered" or "free on rail" are accepted if this is the normal basis of quotation.
		Currently, an average of 20 000 price quotations are collected each month from approximately 5 500 outlets by means of 6 000 questionnaires. The indices are based on retail trade and service prices.
Pricing basis	7	Price information refers to the first seven days of the relevant month, except in the case of mining and most of the agricultural products, where it refers to the average price for the month. The average price of imported crude petroleum, used in the compilation of the import component of the PPI, is calculated as the value (in Rands) divided by the quantity of imported crude petroleum for the relevant month. The prices of all items exclude Value Added Tax (VAT).
Weighting basis	8	<p>The index is a fixed weights index as the weights are determined in the base period and they do not change until the next base period. The commodities directly represented in the index were selected on the basis of the values of sales of products –</p> <ul style="list-style-type: none"> • produced during the 1995-96 financial year for locally produced commodities; • exported during 1996; and • imported during 1996. <p>These commodities constitute approximately 80 per cent of the total value of production/imports/exports during the relevant year as indicated above. Weights were allocated to each product in accordance with the value of sales for each item during the 1995/96 financial year. The basis on which the weighting structure of each main PPI component, indicated in the tables published in this statistical release, was calculated, is indicated in table D.</p>

Table D– Basis on which the weighting structure of each PPI table is based

Number of table in this statistical release	PPI component	Basis for weighting structure

Table 10	Commodities for South African consumption	Sales value of South African production minus exports, plus imports
Table 11	Total output of South African industry groups	Sales value of South African production
Table 12	Output of South African industry groups for South African consumption	Sales value of South African production minus exports
Table 13	Imported commodities	Sales value of imported commodities
Table 14	Exported commodities	Sales value of exported commodities
Table 15	Materials used in certain industries	Value of materials used

Processing of price information	9	The prices that are quoted for the different products are checked. If the price difference between two successive periods are outside the specified range of increase (+10%) or decreases (-5%), the current price levels are confirmed with the relevant respondents through a telephone inquiry.
Calculating product price indices	10	Price relatives are calculated for each product per respondent by dividing the current prices by the previously quoted price. The price relative for each product is calculated by means of the geometric mean of the price relatives for each respondent. This price relative for each product is then applied to the product index for the previous month in order to obtain a product index for the relevant month.
Calculating group price indices	11	Group price indices are calculated by weighting product indices with the relevant product weight, according to each group's (local, import, export) weighting structure, using the Laspeyres index formula.
Contributions of specific products to the total PPI	12	The monthly (annual) contribution of a specific product or group of products to the total PPI is calculated by multiplying the weight of this product or group of products with the monthly (annual) change in the index for this product or group of products, divided by the index for 'All groups'.
Seasonal adjustment	13	Seasonal fluctuations in a time series are those fluctuations which usually tend to occur at about the same time and with the same magnitude each year. This may be the result of climatic influences or other social and commercial habits (e.g. the price of bread, which

		was previously revised in October of each year). In the analysis of time series, Stats SA makes use of the X-11 technique, which was developed by the American Bureau of Census. The seasonally adjusted indices for the latest month are calculated with seasonal factors, which are based on a time series analysis of information up to and including the previous month. Therefore, historical seasonally adjusted indices are revised annually in January of each year.
Reliability of estimates	14	Inaccuracies may occur because of imperfections in reporting by enterprises and errors made in collection and processing of the data. Inaccuracies of this kind are referred to as non-sampling errors. Every effort is made to reduce non-sampling errors to a minimum by careful designing the questionnaires, editing data and efficient operating procedures.
Related publications	15	Users may also wish to refer to the following publications, which are available from Stats SA - <ul style="list-style-type: none"> ▪ Bulletin of Statistics; and ▪ SA Statistics.
Unpublished statistics	16	In some cases, Stats SA can also make available formation, which is not published. This information can be made available in one or more of the following ways: computer printout, diskette or CD. Generally a fee is levied for providing unpublished information.
Symbols and abbreviations	17	Stats SA Statistics South Africa .. not available - nil or not applicable * revised since previous publication avg average

GLOSSARY

Annual percentage change	The annual percentage change is the change in the index of the relevant month of the current year compared with the index of the same month in the previous year expressed as a percentage and is generally accepted as the yardstick of PPI inflation.
Average annual	The average annual percentage change is the change in the average index of one year

	%	+7,7	+7,7	+7,5
--	---	------	------	------	----	----	----	----	----	----	----	----	----	----

Imported commodities

1999	Index	+83,8	+83,1	+83,8	+83,9	+85,7	+87,0	+87,8	+88,7	+89,7	+90,5	+92,0	+93,2	+87,4
	%	+6,1	+6,1	+7,2	+7,3	+9,3	+10,3	+6,9	+7,6	+7,2	+7,0	+7,6	+10,8	+7,8
2000	Index	+94,8	+95,1	+96,1	+97,6	+97,3	+99,2	100,1	102,2	101,6	103,4	105,7	107,2	100,0
	%	+13,1	+14,4	+14,7	+16,3	+13,5	+14,0	+14,0	+15,2	+13,3	+14,3	+14,9	+15,0	+14,4
2001	Index	107,2	106,9	107,9
	%	+13,1	+12,4	+12,3

Table 2 - Contributions to the annual percentage change in the PPI for all commodities for consumption in South Africa according to their origin

Origin of contribution	Contribution at February 2001	Contribution at March 2001
Locally produced commodities	+5,8	+5,6
Imported commodities	+3,3	+3,3
All groups	+9,1	+8,9

Table 3 - Contributors to the monthly percentage change in the PPI for all commodities for consumption in South Africa according to their origin

Origin of contribution	Contribution at February 2001	Contribution at March 2001
Locally produced commodities	+0,5	+0,1
Imported commodities	-0,1	+0,2
All groups	+0,4	+0,3

Table 4 - Contributions to the annual percentage change in the PPI for all commodities for consumption in South Africa according to group

Group	Contribution at February 2001	Contribution at March 2001
Agriculture	+0,4	+0,4
Mining and quarrying	+1,0	+0,9
Food at manufacturing	+0,4	+0,5
Beverages	+0,2	+0,2
Tobacco products	+0,2	+0,2
Textiles and made-up goods	+0,1	+0,1
Wearing apparel	+0,1	+0,1
Wood and wood products	+0,1	+0,1
Paper, paper products and printing	+0,7	+0,7
Products of petroleum and coal	+0,7	+0,5
Chemicals and chemical products	+0,9	+1,0
Rubber and plastic products	+0,2	+0,2
Non-metallic mineral products	+0,2	+0,2
Basic metals	+0,4	+0,4
Metal products	+0,2	+0,2
Non-electrical machinery and equipment	+0,3	+0,3
Office, accounting and computing machinery	+0,1	+0,1
Electrical machinery and apparatus	+0,2	+0,2
Radio, TV, communication equipment and apparatus	+0,1	+0,1
Medical, precision and optical instruments	+0,1	+0,1
Transport equipment	+1,1	+1,1
Furniture	0,0	+0,1
Other manufactures	+0,9	+0,9
Electricity	+0,3	+0,2
All other groups	+0,2	+0,1
All groups	+9,1	+8,9

Table 5 - Contributions to the monthly percentage change in the PPI for all commodities for consumption in South Africa according to group

Group	Contribution at February 2001	Contribution at March 2001
Agriculture	+0,1	-0,1
Mining and quarrying	-0,2	+0,1
Food at manufacturing	0,0	+0,1
Textiles and made-up goods	0,0	+0,1
Chemicals and chemical products	0,0	+0,1
Non metallic mineral products	+0,1	0,0
Basic metals	+0,1	0,0
Metal products	+0,1	0,0
Non-electrical machinery and equipment	+0,1	0,0
Office, accounting and computing machinery	0,0	+0,1

Transport equipment	+0,1	0,0
Electricity	0,0	-0,1
All groups	+0,4	+0,3

Table 6 - Contributors to the annual percentage change in the PPI for locally produced commodities according to group

Group	Contribution at February 2001	Contribution at March 2001
Agriculture	+0,4	+0,5
Mining and quarrying	+0,3	+0,3
Food at manufacturing	+0,4	+0,5
Beverages	+0,2	+0,2
Tobacco products	+0,2	+0,2
Textiles and made-up goods	0,0	+0,1
Wearing apparel	+0,1	+0,1
Wood and wood products	+0,1	+0,1
Paper, paper products and printing	+0,9	+0,9
Products of petroleum and coal	+0,9	+0,7
Chemicals and chemical products	+0,6	+0,6
Rubber and plastic products	+0,2	+0,2
Non-metallic mineral products	+0,3	+0,3
Basic metals	+0,4	+0,4
Metal products	+0,2	+0,2
Non-electrical machinery and equipment	+0,1	+0,1
Electrical machinery and apparatus	+0,2	+0,2
Radio, TV, communication equipment and apparatus	0,0	+0,1
Transport equipment	+0,8	+0,8
Furniture	0,0	+0,1
Other manufactures	+0,1	+0,1
Electricity	+0,4	+0,3
Gas and water	+0,5	0,0
All other groups	+0,4	+0,5
All groups	+7,7	+7,5

Table 7 - Contributors to the monthly percentage change in the PPI for locally produced commodities according to group

Group	Contribution at February 2001	Contribution at March 2001
Agriculture	+0,1	-0,1
Food at manufacturing	0,0	+0,1

Textiles and made up goods	0,0	+0,1
Non-metallic mineral products	+0,1	0,0
Basic metals	+0,1	0,0
Metal products	+0,1	0,0
Transport equipment	+0,2	0,0
Electricity	+0,2	-0,1
All other groups	-0,1	+0,1
	-----	-----
All groups	+0,7	+0,1

Table 8 - Contributors to the annual percentage change in the PPI for imported commodities according to group

Group	Contribution at February 2001	Contribution at March 2000
Agriculture	+0,3	+0,3
Mining and quarrying	+2,1	+2,0
Food at manufacturing	+0,5	+0,5
Textiles and made-up goods	+0,2	+0,1
Leather and leather products	+0,1	+0,1
Paper, paper products and printing	+0,3	+0,4
Chemicals and chemical products	+1,7	+2,0
Non-metallic mineral products	+0,1	+0,1
Basic metals	+0,4	+0,3
Metal products	+0,2	+0,2
Non-electrical machinery and equipment	+1,1	+1,2
Office, accounting and computing machinery	+0,4	+0,5
Electrical machinery and apparatus	+0,1	+0,2
Radio, TV, communication equipment and apparatus	+0,3	+0,3
Medical, precision and optical instruments	+0,3	+0,3
Transport equipment	+1,9	+1,8
Other manufactures	+0,1	+0,1
All other groups	+2,3	+1,9
	-----	-----
All groups	+12,4	+12,3

Table 9 - Contributors to the monthly percentage change in the PPI for imported commodities according to group

Group	Contribution at February 2001	Contribution at March 2001
Agriculture	0,0	-0,1

Mining and quarrying	-0,6	+0,3
Chemicals and chemical products	0,0	+0,3
Basic metals	+0,2	0,0
Non-electrical machinery and equipment	+0,1	+0,1
Office accounting and computing machinery	0,0	+0,1
Radio, TV, communication equipment and apparatus	0,0	+0,1
Medical, precision and optical instruments	0,0	+0,1
All groups	-0,3	+0,9

Table 10 - Production Price Index for consumption in South Africa according to origin and group

Base : 2000 = 100

Origin/Group	Weight	Indices			% change between	
		Mar 2000	Feb 2001	Mar 2001	Feb 2001 and Mar 2001	Mar 2000 and Mar 2001
All groups	100,00	96,9	105,2	105,5	+0,3	+8,9
South African	73,00	97,3	104,5	104,6	+0,1	+7,5
Imported	27,00	96,1	106,9	107,9	+0,9	+12,3
1. Agriculture, Forestry, Fishing and Mining	15,22	96,1	106,3	106,6	+0,3	+10,9
1.1 Agriculture	7,68	100,3	105,9	105,3	-0,6	+5,0
1.1.1 Food	7,34	100,7	102,9	102,5	-0,4	+1,8
Grain	1,51	105,4	110,4	110,3	-0,1	+4,6
Sugar cane	0,38	100,2	105,8	109,8	+3,8	+9,6
Oil seeds	0,18	93,8	132,9	133,4	+0,4	+42,2
Vegetables and dried beans	0,68	96,7	77,2	75,3	-2,5	-22,1
Fruit	0,68	102,4	107,8	107,4	-0,4	+4,9
Meat	2,37	99,5	104,0	102,3	-1,6	+2,8
Milk and eggs	0,96	99,7	103,9	105,0	+1,1	+5,3
Other	0,58	100,4	95,6	95,5	-0,1	-4,9
1.1.2 Other agriculture	0,34	94,9	144,8	142,5	-1,6	+50,2
1.2 Forestry	1,97	100,0	100,0	100,0	0,0	0,0
1.3 Fishing	0,12	97,8	108,6	108,6	0,0	+11,0
1.4 Mining and quarrying	5,45	92,0	106,3	108,0	+1,6	+17,4
Coal	1,59	93,5	101,1	101,6	+0,5	+8,7
Metal ores	0,68	95,8	107,7	107,4	-0,3	+12,1
Other minerals	3,18	91,1	106,7	109,4	+2,5	+20,1
2. Manufacturing	80,28	97,1	105,0	105,4	+0,4	+8,5
South African	56,60	97,1	104,6	104,8	+0,2	+7,9

Imported	23,68	97,3	106,2	107,0	+0,8	+10,0
2.1 Food	10,16	98,6	102,3	103,0	+0,7	+4,5
Meat	1,79	96,6	100,3	101,5	+1,2	+5,1
Fresh meat	1,43	96,4	99,6	101,1	+1,5	+4,9
Meat products	0,36	98,6	103,8	103,7	-0,1	+5,2
Fish and fish products	0,19	95,7	111,2	113,2	+1,8	+18,3
Fruit and vegetable products	0,47	98,5	103,4	104,0	+0,6	+5,6
Fats and oils	0,84	99,7	100,3	101,3	+1,0	+1,6
Milk products	1,31	97,4	105,7	105,9	+0,2	+8,7
Grain mill products	1,82	99,0	102,5	102,4	-0,1	+3,4
Sugar	0,35	99,3	100,9	104,9	+4,0	+5,6
Coffee and tea	0,23	99,8	102,6	103,0	+0,4	+3,2
Other	3,16	99,5	102,1	102,9	+0,8	+3,4
2.2 Beverages	3,26	97,4	102,9	103,0	+0,1	+5,7
Alcoholic	2,35	97,3	103,2	103,4	+0,2	+6,3
Non-alcoholic	0,91	97,5	102,0	102,0	0,0	+4,6
2.3 Tobacco products	1,15	91,4	106,6	106,7	+0,1	+16,7
2.4 Textiles and made-up goods	2,39	99,2	101,9	103,2	+1,3	+4,0
Spinning, weaving and finishing of textiles	1,43	99,2	101,2	102,4	+1,2	+3,2
Other textiles	0,96	99,3	103,1	104,4	+1,3	+5,1
2.5 Wearing apparel	1,81	99,1	103,2	103,8	+0,6	+4,7
Knitted and crocheted fabrics and articles	0,42	99,8	100,5	100,7	+0,2	+0,9
Wearing apparel	1,39	98,9	103,9	104,6	+0,7	+5,8
Men`s and boys` clothing	0,56	99,1	101,0	101,5	+0,5	+2,4
Women`s and girls` clothing	0,78	98,9	105,5	106,3	+0,8	+7,5
Other, including articles of fur	0,05	98,3	109,5	110,4	+0,8	+12,3
2.6 Leather and leather products	0,29	96,7	106,2	106,9	+0,7	+10,5
2.7 Footwear	0,69	99,7	101,4	101,8	+0,4	+2,1
2.8 Wood and wood products	1,26	97,5	103,8	103,9	+0,1	+6,6
Sawmilling and planing of wood	0,44	98,8	100,9	100,9	0,0	+2,1
Products of wood, cork and plaiting materials	0,82	96,8	105,3	105,5	+0,2	+9,0
2.9 Paper, paper products and printing	8,13	96,8	105,3	105,4	+0,1	+8,9
Paper and paper products	3,21	96,5	105,5	105,6	+0,1	+9,4
Publishing and printing	4,92	97,0	105,2	105,2	0,0	+8,5
2.10 Products of petroleum and coal	2,75	90,0	108,7	108,5	-0,2	+20,6
2.11 Chemicals and chemical products	8,39	96,4	106,4	107,5	+1,0	+11,5
Basic chemicals	3,54	94,9	108,7	110,6	+1,7	+16,5
Fertilizers	0,45	98,8	106,2	106,8	+0,6	+8,1
Other	3,09	94,2	109,1	111,3	+2,0	+18,2
Other chemical products	4,85	97,6	104,4	104,9	+0,5	+7,5
Pharmaceutical products	1,47	98,7	104,0	104,2	+0,2	+5,6
Other	3,38	96,9	104,6	105,2	+0,6	+8,6

Table 10 - Production Price Index for consumption in South Africa according to origin and group (concluded)

Base : 2000 = 100

Origin/Group	Weight	Indices			% -change between	
		Mar 2000	Feb 2001	Mar 2001	Feb 2001 and Mar 2001	Mar 2000 and Mar 2001
2.12 Rubber and plastic products	2,71	97,2	103,8	103,8	0,0	+6,8
Rubber products	0,85	96,5	104,3	104,3	0,0	+8,1
Plastic products	1,86	97,4	103,6	103,6	0,0	+6,4
2.13 Non-metallic mineral products	2,25	97,9	107,3	107,5	+0,2	+9,8
Glass and glass products	0,61	99,4	107,1	107,3	+0,2	+7,9
Other	1,64	97,6	107,1	107,3	+0,2	+9,9
2.14 Basic metals	3,97	97,4	106,2	106,2	0,0	+9,0
Ferrous	1,82	99,8	98,7	98,6	-0,1	-1,2
Non-ferrous	2,15	95,3	112,6	112,7	+0,1	+18,3
2.15 Metal products	3,18	98,4	104,7	105,0	+0,3	+6,7
Structural metal products	1,00	98,7	106,0	106,0	0,0	+7,4
Other	2,18	98,3	104,2	104,7	+0,5	+6,5
2.16 Non-electrical machinery and equipment	6,72	98,7	102,9	103,1	+0,2	+4,5
General purpose machinery	2,44	98,4	103,6	104,2	+0,6	+5,9
Special purpose machinery	3,69	98,2	103,4	104,1	+0,7	+6,0
Household appliances	0,59	97,2	104,3	104,3	0,0	+7,3
2.17 Office, accounting and computing machinery	1,41	97,9	105,1	106,2	+1,0	+8,5
2.18 Electrical machinery and apparatus	2,48	97,4	105,5	105,5	0,0	+8,3
Electric motors, generators and transformers	0,34	99,4	103,3	103,3	0,0	+3,9
Electricity distribution and control apparatus	0,75	98,1	101,6	101,6	0,0	+3,6
Insulated wire and cable	0,69	96,0	107,4	107,4	0,0	+11,9
Other	0,70	97,1	107,7	107,7	0,0	+10,9
2.19 Radio, television and communication equipment and apparatus	2,70	98,3	102,5	102,8	+0,3	+4,6
2.20 Medical, precision and optical instruments	1,18	97,2	104,5	105,2	+0,7	+8,2
Medical appliances and instruments for measuring, checking, testing and navigating	0,99	97,1	104,2	105,0	+0,8	+8,1
Other, including watches and clocks	0,19	98,2	105,6	105,8	+0,2	+7,7
2.21 Transport equipment	11,04	97,4	107,2	107,2	0,0	+10,1

Motor vehicles, parts and accessories	10,50	97,4	107,5	107,5	0,0	+10,4
Motor vehicles	5,43	97,5	105,7	105,7	0,0	+8,4
Bodies, trailers and semi-trailers	0,16	94,7	104,3	104,3	0,0	+10,1
Parts and accessories	4,91	97,3	109,1	109,1	0,0	+12,1
Other transport equipment	0,54	98,9	101,9	101,9	0,0	+3,0
2.22 Furniture	1,01	99,2	103,4	103,4	0,0	+4,2
2.23 Other manufactures	1,35	98,0	104,3	104,5	+0,2	+6,6
3. Electricity, Gas Steam and Water	4,50	96,3	103,5	102,4	-1,1	+6,3
3.1 Electricity	4,17	96,4	103,4	102,1	-1,3	+5,9
3.2 Gas, Steam and water	0,33	96,0	105,1	105,9	+0,8	+10,3

Table 11 - Production Price Index for total output of South African industry groups according to destination and group

Base : 2000 = 100

Origin/Group	Weight	Indices			% change between	
		Mar 2000	Feb 2001	Mar 2001	Feb 2001 and Mar 2001	Mar 2000 and Mar 2001
All groups	100,00	97,2	104,4	104,6	+0,2	+7,6
South African	75,88	97,2	104,4	104,6	+0,2	+7,6
Exported	24,12	97,1	104,4	105,1	+0,7	+8,2
1. Agriculture, Forestry, Fishing and Mining	19,69	98,3	104,8	105,3	+0,5	+7,1
1.1 Agriculture	8,55	101,4	104,9	104,3	-0,6	+2,9
1.1.1 Food	8,35	101,8	102,2	101,6	-0,6	-0,2
Grain	1,70	108,9	110,0	109,7	-0,3	+0,7
Sugar cane	0,40	100,2	105,8	109,8	+3,8	+9,6
Oil seeds	0,18	93,8	132,9	133,4	+0,4	+42,2
Vegetables and dried beans	0,81	96,9	79,3	77,6	-2,1	-19,9
Fruit	1,20	104,6	100,8	99,4	-1,4	-5,0
Meat	2,48	99,6	104,1	102,4	-1,6	+2,8
Milk and eggs	1,00	99,7	103,9	105,1	+1,2	+5,4
Other	0,58	99,7	95,5	95,5	0,0	-4,2
1.1.2 Other agriculture	0,20	95,4	148,7	148,6	-0,1	+55,8
1.2 Forestry	2,06	100,0	100,0	100,0	0,0	0,0
1.3 Fishing	0,16	97,5	108,9	108,6	-0,3	+11,4
1.4 Mining and quarrying	8,92	95,7	105,3	107,0	+1,6	+11,8

	Coal	3,22	92,5	107,3	111,0	+3,4	+20,0
	Metal ores	3,64	96,4	105,6	106,4	+0,8	+10,4
	Other minerals	2,06	99,3	101,8	101,7	-0,1	+2,4
2.	Manufacturing	75,63	97,0	104,4	104,6	+0,2	+7,8
	South African	58,83	97,1	104,6	104,8	+0,2	+7,9
	Exported	16,80	96,9	103,9	104,2	+0,3	+7,5
2.1	Food	10,77	98,6	102,0	102,6	+0,6	+4,1
	Meat	1,83	96,6	99,8	101,1	+1,3	+4,7
	Fresh meat	1,34	96,4	99,1	100,6	+1,5	+4,4
	Meat products	0,49	97,7	103,5	103,9	+0,4	+6,3
	Fish and fish products	0,24	99,2	104,1	104,8	+0,7	+5,6
	Fruit and vegetable products	0,77	97,5	103,7	103,4	-0,3	+6,1
	Fats and oils	0,61	101,2	98,6	100,2	+1,6	-1,0
	Milk products	1,35	97,4	105,4	105,6	+0,2	+8,4
	Grain mill products	1,80	99,4	101,1	101,2	+0,1	+1,8
	Sugar	0,70	99,1	102,6	105,1	+2,4	+6,1
	Coffee and tea	0,24	99,9	102,7	103,1	+0,4	+3,2
	Other	3,23	99,5	102,1	102,8	+0,7	+3,3
2.2	Beverages	3,58	97,3	102,7	102,7	0,0	+5,5
	Alcoholic	2,61	97,3	103,0	103,0	0,0	+5,9
	Non-alcoholic	0,97	97,5	102,0	102,0	0,0	+4,6
2.3	Tobacco products	1,22	91,5	106,6	106,6	0,0	+16,5
2.4	Textiles and made-up goods	2,26	99,6	102,2	103,9	+1,7	+4,3
	Spinning, weaving and finishing of textiles	1,37	99,4	102,2	104,2	+2,0	+4,8
	Other textiles	0,89	99,8	102,3	103,7	+1,4	+3,9
2.5	Wearing apparel	1,83	99,3	102,9	103,5	+0,6	+4,2
	Knitted and crocheted fabrics and articles	0,38	99,8	100,6	100,7	+0,1	+0,9
	Wearing apparel	1,45	99,2	103,7	104,3	+0,6	+5,1
	Men`s and boys` clothing	0,60	99,1	101,0	101,4	+0,4	+2,3
	Women`s and girls` clothing	0,80	99,2	105,1	105,9	+0,8	+6,8
	Other, including articles of fur	0,05	98,8	109,6	110,4	+0,7	+11,7
2.6	Leather and leather products	0,33	98,4	103,0	103,0	0,0	+4,7
2.7	Footwear	0,55	99,2	101,5	101,5	0,0	+2,3
2.8	Wood and wood products	1,20	97,4	104,0	104,0	0,0	+6,8
	Sawmilling and planing of wood	0,36	98,2	102,0	102,0	0,0	+3,9
	Products of wood, cork and plaiting materials	0,84	96,9	105,2	105,2	0,0	+8,6
2.9	Paper, paper products and printing	8,36	96,6	105,3	105,3	0,0	+9,0
	Paper and paper products	3,60	96,2	105,3	105,3	0,0	+9,5
	Publishing and printing	4,76	96,9	105,3	105,3	0,0	+8,7
2.10	Products of petroleum and coal	3,27	90,4	104,9	105,7	+0,8	+16,9
2.11	Chemicals and chemical products	7,41	97,1	104,1	104,2	+0,1	+7,3

Basic chemicals	3,53	96,6	103,9	104,1	+0,2	+7,8
Fertilizers	0,59	99,6	103,6	103,6	0,0	+4,0
Other	2,94	96,1	103,9	104,1	+0,2	+8,3
Other chemical products	3,88	97,5	104,2	104,2	0,0	+6,9
Pharmaceutical products	0,88	99,2	105,9	105,9	0,0	+6,8
Other	3,00	96,9	103,7	103,7	0,0	+7,0

Table 11 - Production Price Index for total output of South African industry groups according to destination and group (concluded)

Base : 2000 = 100

Origin/Group	Weight	Indices			% - change between	
		Mar 2000	Feb 2001	Mar 2001	Feb 2001 and Mar 2001	Mar 2000 and Mar 2001
2.12 Rubber and plastic products	2,48	96,6	104,6	104,6	0,0	+8,3
Rubber products	0,75	95,6	105,7	105,7	0,0	+10,6
Plastic products	1,73	96,9	103,9	103,9	0,0	+7,2
2.13 Non-metallic mineral products	2,11	97,7	107,6	107,7	+0,1	+10,2
Glass and glass products	0,56	99,3	106,9	107,2	+0,3	+8,0
Other	1,55	97,3	107,5	107,6	+0,1	+10,6
2.14 Basic metals	8,68	95,8	107,7	107,8	+0,1	+12,5
Ferrous	4,04	96,9	105,3	105,6	+0,3	+9,0
Non-ferrous	4,64	94,7	109,7	109,7	0,0	+15,8
2.15 Metal products	3,23	98,5	104,4	104,5	+0,1	+6,1
Structural metal products	1,24	97,9	106,5	106,5	0,0	+8,8
Other	1,99	98,9	103,1	103,3	+0,2	+4,4
2.16 Non-electrical machinery and equipment	3,57	98,2	103,3	103,7	+0,4	+5,6
General purpose machinery	1,26	98,5	103,1	103,1	0,0	+4,7
Special purpose machinery	1,96	99,0	102,3	102,3	0,0	+3,3
Household appliances	0,35	98,1	103,2	103,2	0,0	+5,2
2.17 Office, accounting and computing machinery	0,14	99,9	100,1	100,1	0,0	+0,2
2.18 Electrical machinery and apparatus	1,90	97,3	106,1	106,1	0,0	+9,0
Electric motors, generators and transformers	0,19	98,7	106,9	106,9	0,0	+8,3
Electricity distribution and control apparatus	0,45	98,3	101,4	101,4	0,0	+3,2
Insulated wire and cable	0,69	96,4	107,0	107,0	0,0	+11,0
Other	0,57	97,0	108,6	108,6	0,0	+12,0
2.19 Radio, television and communication equipment and apparatus	1,34	97,9	101,7	101,7	0,0	+3,9

2.20 Medical, precision and optical instruments	0,32	98,8	103,5	103,5	0,0	+4,8
Medical appliances and instruments for measuring, checking, testing and navigating	0,28	99,1	103,4	103,4	0,0	+4,3
Other, including watches and clocks	0,04	98,1	104,4	104,4	0,0	+6,4
2.21 Transport equipment	8,32	98,1	105,1	105,1	0,0	+7,1
Motor vehicles, parts and accessories	8,07	98,1	105,3	105,3	0,0	+7,3
Motor vehicles	5,31	97,4	105,9	105,9	0,0	+8,7
Bodies, trailers and semi-trailers	0,33	97,3	101,8	101,8	0,0	+4,6
Parts and accessories	2,43	99,5	104,6	104,5	-0,1	+5,0
Other transport equipment	0,25	99,2	101,0	101,0	0,0	+1,8
2.22 Furniture	1,39	99,4	102,7	102,7	0,0	+3,3
2.23 Other manufactures	1,37	97,7	103,1	103,1	0,0	+5,5
3. Electricity, Gas Steam and Water	4,68	96,3	103,5	102,4	-1,1	+6,3
3.1 Electricity	4,35	96,4	103,4	102,1	-1,3	+5,9
3.2 Gas, Steam and water	0,33	96,1	105,1	105,9	+0,8	+10,2

Table 12 - Production Price Index for output of South African industry groups for South African consumption according to group

Base : 2000 = 100

Origin/Group	Weight	Indices			% change between	
		Mar 2000	Feb 2001	Mar 2001	Feb 2001 and Mar 2001	Mar 2000 and Mar 2001
All groups	100,00	97,3	104,5	104,6	+0,1	+7,5
South African	100,00	97,3	104,5	104,6	+0,1	+7,5
Exported	-	-	-	-	-	-
1. Agriculture, Forestry, Fishing and Mining	16,29	99,0	104,3	104,1	-0,2	+5,2
1.1 Agriculture	9,67	100,6	105,7	105,2	-0,5	+4,6
1.1.1 Food	9,44	100,8	102,7	102,3	-0,4	+1,5
Grain	1,59	107,6	111,2	111,1	-0,1	+3,3
Sugar cane	0,52	100,2	105,8	109,8	+3,8	+9,6
Oil seeds	0,24	93,8	132,9	133,4	+0,4	+42,2
Vegetables and dried beans	0,93	96,6	77,2	75,3	-2,5	-22,0
Fruit	0,91	102,5	107,7	107,2	-0,5	+4,6
Meat	3,23	99,6	104,0	102,3	-1,6	+2,7
Milk and eggs	1,32	99,7	103,9	105,0	+1,1	+5,3
Other	0,70	99,7	95,5	95,5	0,0	-4,2
1.1.2 Other agriculture	0,23	95,3	156,3	155,6	-0,4	+63,3

1.2	Forestry	2,67	100,0	100,0	100,0	0,0	0,0
1.3	Fishing	0,16	97,8	108,7	108,7	0,0	+11,1
1.4	Mining and quarrying	3,79	94,8	103,3	103,5	+0,2	+9,2
	Coal	2,09	93,3	101,2	101,7	+0,5	+9,0
	Metal ores	0,88	95,7	108,0	107,8	-0,2	+12,6
	Other minerals	0,82	98,5	104,2	104,3	+0,1	+5,9
2.	Manufacturing	77,54	97,1	104,6	104,8	+0,2	+7,9
	South African	77,54	97,1	104,6	104,8	+0,2	+7,9
	Exported	-	-	-	-	-	-
2.1	Food	12,44	98,8	101,8	102,6	+0,8	+3,8
	Meat	2,20	96,7	99,7	101,1	+1,4	+4,6
	Fresh meat	1,85	96,2	99,1	100,7	+1,6	+4,7
	Meat products	0,35	99,1	102,4	102,7	+0,3	+3,6
	Fish and fish products	0,10	98,6	106,7	108,3	+1,5	+9,8
	Fruit and vegetable products	0,57	98,5	102,7	103,2	+0,5	+4,8
	Fats and oils	0,72	101,3	98,3	100,1	+1,8	-1,2
	Milk products	1,72	97,4	105,6	105,9	+0,3	+8,7
	Grain mill products	2,25	99,4	101,1	101,2	+0,1	+1,8
	Sugar	0,48	99,3	100,9	104,9	+4,0	+5,6
	Coffee and tea	0,31	99,9	102,6	103,1	+0,5	+3,2
	Other	4,09	99,5	102,1	102,8	+0,7	+3,3
2.2	Beverages	4,21	97,4	102,8	102,8	0,0	+5,5
	Alcoholic	2,98	97,4	103,2	103,2	0,0	+6,0
	Non-alcoholic	1,23	97,5	102,0	102,0	0,0	+4,6
2.3	Tobacco products	1,55	91,4	106,6	106,6	0,0	+16,6
2.4	Textiles and made-up goods	2,52	99,7	101,5	103,0	+1,5	+3,3
	Spinning, weaving and finishing of textiles	1,49	99,7	100,8	102,3	+1,5	+2,6
	Other textiles	1,03	99,8	102,4	103,8	+1,4	+4,0
2.5	Wearing apparel	2,19	99,2	103,2	103,7	+0,5	+4,5
	Knitted and crocheted fabrics and articles	0,46	99,8	100,6	100,7	+0,1	+0,9
	Wearing apparel	1,73	99,1	104,0	104,8	+0,8	+5,8
	Men`s and boys` clothing	0,67	99,0	101,1	101,6	+0,5	+2,6
	Women`s and girls` clothing	1,00	99,2	105,4	106,3	+0,9	+7,2
	Other, including articles of fur	0,06	98,5	111,0	111,8	+0,7	+13,5
2.6	Leather and leather products	0,21	98,3	104,3	104,3	0,0	+6,1
2.7	Footwear	0,68	99,2	101,3	101,3	0,0	+2,1
2.8	Wood and wood products	1,46	97,4	103,9	103,9	0,0	+6,7
	Sawmilling and planing of wood	0,46	98,6	101,1	101,1	0,0	+2,5
	Products of wood, cork and plaiting materials	1,00	96,8	105,3	105,3	0,0	+8,8
2.9	Paper, paper products and printing	9,82	96,8	105,3	105,3	0,0	+8,8

Paper and paper products	3,70	96,7	105,1	105,1	0,0	+8,7
Publishing and printing	6,12	96,9	105,4	105,4	0,0	+8,8
2.10 Products of petroleum and coal	3,29	89,3	109,1	108,9	-0,2	+21,9
2.11 Chemicals and chemical products	6,76	96,6	105,1	105,1	0,0	+8,8
Basic chemicals	2,52	95,4	106,2	106,2	0,0	+11,3
Fertilizers	0,49	99,7	105,0	105,0	0,0	+5,3
Other	2,03	94,2	106,5	106,5	0,0	+13,1
Other chemical products	4,24	97,4	104,3	104,3	0,0	+7,1
Pharmaceutical products	1,05	99,7	104,3	104,3	0,0	+4,6
Other	3,19	96,5	104,3	104,3	0,0	+8,1

Table 12 - Production Price Index for output of South African industry groups for South African consumption according to group (concluded)

Base : 2000 = 100

Origin/Group	Weight	Indices			% -change between	
		Mar 2000	Feb 2001	Mar 2001	Feb 2001 and Mar 2001	Mar 2000 and Mar 2001
2.12 Rubber and plastic products	2,95	96,6	104,5	104,5	0,0	+8,2
Rubber products	0,83	95,5	105,6	105,6	0,0	+10,6
Plastic products	2,12	97,0	104,2	104,2	0,0	+7,4
2.13 Non-metallic mineral products	2,50	97,6	108,1	108,2	+0,1	+10,9
Glass and glass products	0,66	99,5	107,4	107,4	0,0	+7,9
Other	1,84	97,2	108,1	108,2	+0,1	+11,3
2.14 Basic metals	4,20	96,9	105,7	105,7	0,0	+9,1
Ferrous	1,90	99,8	98,0	98,0	0,0	-1,8
Non-ferrous	2,30	94,6	112,3	112,4	+0,1	+18,8
2.15 Metal products	3,58	98,8	104,4	104,5	+0,1	+5,8
Structural metal products	1,31	98,7	106,2	106,2	0,0	+7,6
Other	2,27	98,8	103,2	103,4	+0,2	+4,7
2.16 Non-electrical machinery and equipment	2,94	98,3	103,0	103,0	0,0	+4,8
General purpose machinery	0,94	98,4	102,9	102,9	0,0	+4,6
Special purpose machinery	1,60	98,4	103,5	103,5	0,0	+5,2
Household appliances	0,40	98,0	102,3	102,3	0,0	+4,4
2.17 Office, accounting and computing machinery	0,02	99,2	101,9	101,9	0,0	+2,7
2.18 Electrical machinery and apparatus	2,15	97,0	106,8	106,8	0,0	+10,1
Electric motors, generators and transformers	0,20	98,8	107,2	107,2	0,0	+8,5
Electricity distribution and control apparatus	0,52	98,2	101,4	101,4	0,0	+3,3

Insulated wire and cable	0,86	96,2	107,1	107,1	0,0	+11,3
Other	0,57	96,3	110,6	110,6	0,0	+14,8
2.19 Radio, television and communication equipment and apparatus	1,58	97,8	101,7	101,7	0,0	+4,0
2.20 Medical, precision and optical instruments	0,25	98,7	103,6	103,6	0,0	+5,0
Medical appliances and instruments for measuring, checking, testing and navigating	0,22	98,9	103,3	103,3	0,0	+4,4
Other, including watches and clocks	0,03	97,4	105,7	105,7	0,0	+8,5
2.21 Transport equipment	9,60	97,9	105,8	105,8	0,0	+8,1
Motor vehicles, parts and accessories	9,55	97,9	105,7	105,7	0,0	+8,0
Motor vehicles	6,62	97,3	106,2	106,2	0,0	+9,1
Bodies, trailers and semi-trailers	0,17	93,8	103,9	103,9	0,0	+10,8
Parts and accessories	2,76	99,5	104,7	104,6	-0,1	+5,1
Other transport equipment	0,05	99,5	100,3	100,3	0,0	+0,8
2.22 Furniture	1,27	99,1	103,7	103,7	0,0	+4,6
2.23 Other manufactures	1,37	97,9	104,2	104,2	0,0	+6,4
3. Electricity, Gas Steam and Water	6,17	96,3	103,4	102,3	-1,1	+6,2
3.1 Electricity	5,72	96,4	103,4	102,1	-1,3	+5,9
3.2 Gas, Steam and water	0,45	96,1	105,1	105,9	+0,8	+10,2

Table 13 - Production Price Index for imported commodities according to group

Base : 2000 = 100

Origin/Group	Weight	Indices			% change between	
		Mar 2000	Feb 2001	Mar 2001	Feb 2001 and Mar 2001	Mar 2000 and Mar 2001
All groups	100,00	96,1	106,9	107,9	+0,9	+12,3
1. Agriculture, Forestry, Fishing and Mining	12,27	90,9	107,3	109,5	+2,1	+20,5
1.1 Agriculture	2,27	96,4	109,1	107,4	-1,6	+11,4
1.1.1 Food	1,66	97,2	106,2	106,1	-0,1	+9,2
Grain	1,30	96,6	108,0	107,8	-0,2	+11,6
Sugar cane	-	-	-	-	-	-
Oil seeds	-	-	-	-	-	-
Vegetables and dried beans	-	-	-	-	-	-
Fruit	0,06	91,8	104,3	106,0	+1,6	+15,5

	Meat	0,05	94,2	104,2	104,2	0,0	+10,6
	Milk and eggs	-	-	-	-	-	-
	Other	0,25	103,0	96,4	96,1	-0,3	-6,7
1.1.2	Other agriculture	0,61	94,1	117,2	111,1	-5,2	+18,1
1.2	Forestry	0,05	100,0	100,0	100,0	0,0	0,0
1.3	Fishing	0,01	99,7	100,4	100,4	0,0	+0,7
1.4	Mining and quarrying	9,94	90,4	106,6	109,6	+2,8	+21,2
	Coal	0,26	99,9	100,0	100,2	+0,2	+0,3
	Metal ores	0,12	99,3	97,8	97,8	0,0	-1,5
	Other minerals	9,56	90,3	106,5	109,7	+3,0	+21,5
2.	Manufacturing	87,73	97,4	106,2	107,0	+0,8	+10,0
2.1	Food	3,96	96,4	108,7	108,3	-0,4	+12,3
	Meat	0,67	96,4	108,6	107,7	-0,8	+11,7
	Fresh meat	0,46	97,0	107,1	106,7	-0,4	+10,0
	Meat products	0,21	95,0	112,3	110,2	-1,9	+16,0
	Fish and fish products	0,44	94,2	113,3	115,5	+1,9	+22,6
	Fruit and vegetable products	0,18	98,3	108,8	109,2	+0,4	+11,1
	Fats and oils	1,16	96,2	104,7	104,1	-0,6	+8,2
	Milk products	0,21	95,6	108,5	107,8	-0,6	+12,8
	Grain mill products	0,65	96,6	113,5	111,5	-1,8	+15,4
	Sugar	0,01	97,5	104,7	104,7	0,0	+7,4
	Coffee and tea	0,03	96,3	102,4	101,1	-1,3	+5,0
	Other	0,61	99,2	103,8	104,4	+0,6	+5,2
2.2	Beverages	0,66	95,3	102,5	104,3	+1,8	+9,4
	Alcoholic	0,64	95,1	102,6	104,4	+1,8	+9,8
	Non-alcoholic	0,02	100,2	99,7	100,1	+0,4	-0,1
2.3	Tobacco products	0,04	100,2	100,2	108,1	+7,9	+7,9
2.4	Textiles and made-up goods	2,03	97,1	103,7	104,1	+0,4	+7,2
	Spinning, weaving and finishing of textiles	1,28	97,3	102,3	102,5	+0,2	+5,3
	Other textiles	0,75	96,8	106,0	106,6	+0,6	+10,1
2.5	Wearing apparel	0,78	98,2	102,7	103,2	+0,5	+5,1
	Knitted and crocheted fabrics and articles	0,30	100,1	100,9	101,8	+0,9	+1,7
	Wearing apparel	0,48	97,2	103,9	104,2	+0,3	+7,2
	Men`s and boys` clothing	0,24	100,3	100,7	100,9	+0,2	+0,6
	Women`s and girls` clothing	0,20	93,5	107,8	108,2	+0,4	+15,7
	Other, including articles of fur	0,04	97,1	102,2	102,7	+0,5	+5,8
2.6	Leather and leather products	0,51	94,7	108,4	109,8	+1,3	+15,9
2.7	Footwear	0,73	100,9	101,0	102,3	+1,3	+1,4
2.8	Wood and wood products	0,71	98,5	103,1	103,7	+0,6	+5,3
	Sawmilling and planing of wood	0,38	100,0	100,0	100,0	0,0	0,0
	Products of wood, cork and plaiting materials	0,33	97,1	105,8	107,1	+1,2	+10,3

2.9 Paper, paper products and printing	3,57	96,6	105,6	106,2	+0,6	+9,9
Paper and paper products	1,88	95,1	107,4	108,5	+1,0	+14,1
Publishing and printing	1,69	98,2	103,9	104,0	+0,1	+5,9
2.10 Products of petroleum and coal	1,32	100,0	101,1	101,1	0,0	+1,1
2.11 Chemicals and chemical products	12,81	95,9	108,1	110,8	+2,5	+15,5
Basic chemicals	6,30	94,2	111,5	115,5	+3,6	+22,6
Fertilizers	0,32	94,8	112,3	115,1	+2,5	+21,4
Other	5,98	94,3	111,4	115,5	+3,7	+22,5
Other chemical products	6,51	97,7	104,6	106,0	+1,3	+8,5
Pharmaceutical products	2,60	97,5	103,7	104,3	+0,6	+7,0
Other	3,91	98,1	105,4	107,2	+1,7	+9,3

Table 13 - Production Price Index for imported commodities according to group (concluded)

Base : 2000 = 100

Origin/Group	Weight	Indices			% -change between	
		Mar 2000	Feb 2001	Mar 2001	Feb 2001 and Mar 2001	Mar 2000 and Mar 2001
2.12 Rubber and plastic products	2,07	99,5	101,2	101,3	+0,1	+1,8
Rubber products	0,92	99,3	101,4	101,5	+0,1	+2,2
Plastic products	1,15	99,6	101,0	101,0	0,0	+1,4
2.13 Non-metallic mineral products	1,57	99,8	103,2	103,7	+0,5	+3,9
Glass and glass products	0,47	98,9	105,8	106,5	+0,7	+7,7
Other	1,10	100,3	102,2	102,6	+0,4	+2,3
2.14 Basic metals	3,35	99,0	107,5	107,4	-0,1	+8,5
Ferrous	1,60	99,9	100,9	100,5	-0,4	+0,6
Non-ferrous	1,75	98,2	113,3	113,4	+0,1	+15,5
2.15 Metal products	2,09	97,2	106,2	107,4	+1,1	+10,5
Structural metal products	0,18	99,6	102,8	102,6	-0,2	+3,0
Other	1,91	97,0	106,5	107,8	+1,2	+11,1
2.16 Non-electrical machinery and equipment	17,02	98,1	103,9	104,7	+0,8	+6,7
General purpose machinery	6,50	98,4	104,1	104,8	+0,7	+6,5
Special purpose machinery	9,36	98,2	103,4	104,4	+1,0	+6,3
Household appliances	1,16	96,4	106,1	106,1	0,0	+10,1
2.17 Office, accounting and computing machinery	5,18	97,8	105,1	106,2	+1,0	+8,6
2.18 Electrical machinery and apparatus	3,41	98,3	102,8	102,8	0,0	+4,6

Electric motors, generators and transformers	0,73	100,0	100,0	100,0	0,0	0,0
Electricity distribution and control apparatus	1,23	98,2	102,1	102,1	0,0	+4,0
Insulated wire and cable	0,22	93,0	111,6	111,6	0,0	+20,0
Other	1,23	98,6	103,4	103,4	0,0	+4,9
2.19 Radio, television and communication equipment and apparatus	5,73	98,9	103,2	103,8	+0,6	+5,0
2.20 Medical, precision and optical instruments	3,67	97,0	104,6	105,4	+0,8	+8,7
Medical appliances and instruments for measuring, checking, testing and navigating	3,05	96,6	104,3	105,3	+1,0	+9,0
Other, including watches and clocks	0,62	98,4	105,6	105,8	+0,2	+7,5
2.21 Transport equipment	14,93	96,8	108,6	108,6	0,0	+12,2
Motor vehicles, parts and accessories	13,08	96,8	109,1	109,1	0,0	+12,7
Motor vehicles	2,22	99,1	101,4	101,6	+0,2	+2,5
Bodies, trailers and semi-trailers	0,15	98,7	105,8	105,8	0,0	+7,2
Parts and accessories	10,71	96,5	109,8	109,8	0,0	+13,8
Other transport equipment	1,85	98,9	102,2	102,1	-0,1	+3,2
2.22 Furniture	0,31	100,0	100,3	100,3	0,0	+0,3
2.23 Other manufactures	1,28	98,2	104,3	105,0	+0,7	+6,9
3. Electricity, Gas Steam and Water	-	-	-	-	-	-
3.1 Electricity	-	-	-	-	-	-
3.2 Gas, Steam and water	-	-	-	-	-	-

Table 14 - Production Price Index for exported commodities according to group

Base : 2000 = 100

Origin/Group	Weight	Indices			% change between	
		Mar 2000	Feb 2001	Mar 2001	Feb 2001 and Mar 2001	Mar 2000 and Mar 2001
All groups	100,00	97,1	104,4	105,1	+0,7	+8,2
1. Agriculture, Forestry, Fishing and Mining	30,30	97,3	105,4	107,2	+1,7	+10,2
1.1 Agriculture	5,00	108,9	98,6	97,5	-1,1	-10,5
1.1.1 Food	4,89	110,3	97,8	96,3	-1,5	-12,7
Grain	2,03	113,1	106,9	106,1	-0,7	-6,2
Sugar cane	-	-	-	-	-	-
Oil seeds	-	-	-	-	-	-

	Vegetables and dried beans	0,44	100,0	100,0	100,0	0,0	0,0
	Fruit	2,08	111,6	83,3	80,8	-3,0	-27,6
	Meat	0,11	95,3	111,6	112,6	+0,9	+18,2
	Milk and eggs	0,01	100,0	100,0	100,0	0,0	0,0
	Other	0,22	-	-	-	-	-
1.1.2	Other agriculture	0,11	96,1	108,8	112,2	+3,1	+16,8
1.2	Forestry	0,11	100,0	100,0	100,0	0,0	0,0
1.3	Fishing	0,18	96,7	109,3	108,2	-1,0	+11,9
1.4	Mining and quarrying	25,01	96,1	106,3	108,7	+2,3	+13,1
	Coal	6,79	91,6	113,9	120,7	+6,0	+31,8
	Metal ores	12,26	96,5	105,2	106,3	+1,0	+10,2
	Other minerals	5,96	99,7	100,9	100,7	-0,2	+1,0
2.	Manufacturing	69,70	96,9	103,9	104,2	+0,3	+7,5
2.1	Food	5,40	97,8	103,7	103,3	-0,4	+5,6
	Meat	0,62	95,5	104,1	104,6	+0,5	+9,5
	Fresh meat	0,20	100,3	99,2	99,2	0,0	-1,1
	Meat products	0,42	93,3	106,5	107,2	+0,7	+14,9
	Fish and fish products	0,69	99,5	102,8	103,1	+0,3	+3,6
	Fruit and vegetable products	1,41	96,2	105,3	103,7	-1,5	+7,8
	Fats and oils	0,24	100,3	101,2	101,2	0,0	+0,9
	Milk products	0,19	99,1	102,1	101,7	-0,4	+2,6
	Grain mill products	0,36	99,8	100,8	100,8	0,0	+1,0
	Sugar	1,38	99,1	105,4	105,5	+0,1	+6,5
	Coffee and tea	0,03	100,0	100,5	100,5	0,0	+0,5
	Other	0,48	99,5	102,0	102,0	0,0	+2,5
2.2	Beverages	1,57	96,4	101,8	101,8	0,0	+5,6
	Alcoholic	1,44	96,2	101,9	101,9	0,0	+5,9
	Non-alcoholic	0,13	100,0	100,1	100,1	0,0	+0,1
2.3	Tobacco products	0,16	97,2	105,2	105,2	0,0	+8,2
2.4	Textiles and made-up goods	1,38	98,6	106,6	110,0	+3,2	+11,6
	Spinning, weaving and finishing of textiles	0,96	98,3	108,6	112,9	+4,0	+14,9
	Other textiles	0,42	99,5	101,6	102,9	+1,3	+3,4
2.5	Wearing apparel	0,65	99,8	100,6	100,9	+0,3	+1,1
	Knitted and crocheted fabrics and articles	0,13	99,8	100,9	102,2	+1,3	+2,4
	Wearing apparel	0,52	99,8	100,6	100,7	+0,1	+0,9
	Men`s and boys` clothing	0,33	99,7	100,9	100,9	0,0	+1,2
	Women`s and girls` clothing	0,16	100,0	100,9	100,9	0,0	+0,9
	Other, including articles of fur	0,03	100,1	100,1	100,1	0,0	0,0
2.6	Leather and leather products	0,69	98,8	101,7	101,7	0,0	+2,9
2.7	Footwear	0,12	99,1	103,6	103,6	0,0	+4,5
2.8	Wood and wood products	0,84	97,7	104,6	104,6	0,0	+7,1

Sawmilling and planing of wood	0,53	96,9	105,4	105,4	0,0	+8,8
Products of wood, cork and plaiting materials	0,31	99,0	103,6	103,6	0,0	+4,6
2.9 Paper, paper products and printing	3,70	94,6	105,3	105,3	0,0	+11,3
Paper and paper products	3,24	94,0	106,1	106,1	0,0	+12,9
Publishing and printing	0,46	98,6	100,5	100,5	0,0	+1,9
2.10 Products of petroleum and coal	3,20	95,0	86,8	90,6	+4,4	-4,6
2.11 Chemicals and chemical products	9,41	98,3	102,0	102,2	+0,2	+4,0
Basic chemicals	6,68	98,4	100,9	101,2	+0,3	+2,8
Fertilizers	0,91	99,5	100,8	100,8	0,0	+1,3
Other	5,77	98,2	100,9	101,3	+0,4	+3,2
Other chemical products	2,73	98,0	104,1	104,1	0,0	+6,2
Pharmaceutical products	0,36	94,3	122,4	122,4	0,0	+29,8
Other	2,37	98,5	101,6	101,6	0,0	+3,1

Table 14 - Production Price Index for exported commodities according to group (concluded)

Base : 2000 = 100

Origin/Group	Weight	Indices			% -change between	
		Mar 2000	Feb 2001	Mar 2001	Feb 2001 and Mar 2001	Mar 2000 and Mar 2001
2.12 Rubber and plastic products	1,02	96,3	105,3	105,3	0,0	+9,3
Rubber products	0,51	96,4	107,0	107,0	0,0	+11,0
Plastic products	0,51	96,3	103,0	103,0	0,0	+7,0
2.13 Non-metallic mineral products	0,87	98,9	102,5	103,3	+0,8	+4,4
Glass and glass products	0,23	98,0	103,1	105,5	+2,3	+7,7
Other	0,64	99,3	102,4	102,7	+0,3	+3,4
2.14 Basic metals	22,75	95,1	108,8	108,9	+0,1	+14,5
Ferrous	10,75	95,5	109,2	109,6	+0,4	+14,8
Non-ferrous	12,00	94,8	108,3	108,2	-0,1	+14,1
2.15 Metal products	2,09	97,2	104,8	104,8	0,0	+7,8
Structural metal products	1,02	95,0	106,5	106,5	0,0	+12,1
Other	1,07	99,7	102,6	102,6	0,0	+2,9
2.16 Non-electrical machinery and equipment	5,61	99,4	101,9	101,9	0,0	+2,5
General purpose machinery	2,25	98,6	103,5	103,5	0,0	+5,0
Special purpose machinery	3,09	100,1	100,5	100,5	0,0	+0,4
Household appliances	0,27	98,7	106,6	106,6	0,0	+8,0
2.17 Office, accounting and computing machinery	0,52	100,0	100,0	100,0	0,0	0,0

2.18 Electrical machinery and apparatus	1,13	99,4	101,8	101,8	0,0	+2,4
Electric motors, generators and transformers	0,17	97,6	105,7	105,7	0,0	+8,3
Electricity distribution and control apparatus	0,23	99,9	100,4	100,4	0,0	+0,5
Insulated wire and cable	0,15	99,1	103,0	103,0	0,0	+3,9
Other	0,58	99,7	100,9	100,9	0,0	+1,2
2.19 Radio, television and communication equipment and apparatus	0,64	99,0	101,7	101,7	0,0	+2,7
2.20 Medical, precision and optical instruments	0,54	99,3	103,7	103,7	0,0	+4,4
Medical appliances and instruments for measuring, checking, testing and navigating	0,46	99,3	103,8	103,8	0,0	+4,5
Other, including watches and clocks	0,08	99,2	102,4	102,4	0,0	+3,2
2.21 Transport equipment	4,26	99,7	101,2	101,2	0,0	+1,5
Motor vehicles, parts and accessories	3,40	99,8	101,2	101,2	0,0	+1,4
Motor vehicles	1,16	100,0	100,0	100,0	0,0	0,0
Bodies, trailers and semi-trailers	0,86	99,9	100,1	100,1	0,0	+0,2
Parts and accessories	1,38	99,5	102,8	102,8	0,0	+3,3
Other transport equipment	0,86	99,2	101,4	101,4	0,0	+2,2
2.22 Furniture	1,78	100,0	100,0	100,0	0,0	0,0
2.23 Other manufactures	1,37	97,1	99,6	99,6	0,0	+2,6
3. Electricity, Gas Steam and Water	-	-	-	-	-	-
3.1 Electricity	-	-	-	-	-	-
3.2 Gas, Steam and water	-	-	-	-	-	-

Table 15 - Production Price Index for materials used in certain industries

Base : 2000 = 100

Industry	Indices			% - change between	
	Mar 2000	Feb 2001	Mar 2001	Feb 2001 and Mar 2001	Mar 2000 and Mar 2001
Building and construction	97,2	104,4	104,7	+0,3	+7,7
Building industries	97,8	104,1	104,4	+0,3	+6,7
Civil engineering	97,7	103,6	103,7	+0,1	+6,1
Mechanical engineering	98,5	103,0	103,1	+0,1	+4,7
Electrical engineering	97,9	104,7	105,0	+0,3	+7,3

Table 16 - Production Price Index for selected materials

Base : 2000 = 100

Type of materials	Indices			% -change between	
	Mar 2000	Feb 2001	Mar 2001	Feb 2001 and Mar 2001	Mar 2000 and Mar 2001
Wool, auction prices, 18 types	104,0	124,0	118,7	-4,3	+14,1
Coal, bituminous	93,2	101,2	101,7	+0,5	+9,1
Coal, bituminous - for local sales	93,0	109,9	110,8	+0,8	+19,1
- Cobbles, grade A	89,3	121,0	121,4	+0,3	+35,9
- Cobbles, grade B	83,1	140,5	140,0	-0,4	+68,5
- Large nuts, grade A	95,5	110,0	110,7	+0,6	+15,9
- Large nuts, grade B	93,1	104,0	106,0	+1,9	+13,9
- Small nuts, grade A	92,8	114,4	115,9	+1,3	+24,9
- Small nuts, grade B	90,0	106,3	106,8	+0,5	+18,7
- Peas, grade A	95,1	111,5	108,5	-2,7	+14,1
- Peas, grade B	92,8	106,6	107,0	+0,4	+15,3
Anthracite - for local sales					
- Grade SP	101,1	91,3	92,4	+1,2	-8,6
- Grade A	101,1	91,2	92,4	+1,3	-8,6
Wood products, excluding minewood	98,2	102,6	102,7	+0,1	+4,6
SA Pine, kiln dried	95,9	101,0	101,0	0,0	+5,3
Paper, newsprint	108,5	97,2	97,2	0,0	-10,4
Kraft paper	93,0	105,0	105,2	+0,2	+13,1
Boxes, corrugated cardboard	97,1	102,2	102,2	0,0	+5,3
Leather, bovine hide	94,5	113,3	113,3	0,0	+19,9
Rubber crude	97,6	101,7	101,7	0,0	+4,2
- Natural	100,0	100,0	100,0	0,0	0,0
- Synthetic	95,6	103,1	103,1	0,0	+7,8
- Synthetic - Local	95,6	103,1	103,1	0,0	+7,8
Tyres and tubes	96,0	104,6	104,6	0,0	+9,0
Plastic bottles	99,0	105,9	105,9	0,0	+7,0
Plastic, bulk forms	93,3	108,1	108,6	+0,5	+16,4
Sulphuric acid	97,6	102,5	102,5	0,0	+5,0
Glycerine	100,0	100,0	100,0	0,0	0,0
Paints	96,2	105,8	105,8	0,0	+10,0
Foam insulation materials	100,0	100,0	100,0	0,0	0,0
- Polyurethane	100,0	100,0	100,0	0,0	0,0
Petro-chemical building materials	95,4	106,9	107,9	+0,9	+13,1
Waterproofing	95,4	107,9	107,9	0,0	+13,1
Resilient floor coverings	96,0	105,2	109,7	+4,3	+14,3
Petrol, 93 octane - Coast	88,2	108,3	109,3	+0,9	+23,9
- Witwatersrand	88,2	108,3	109,3	+0,9	+23,9
Diesel oil - Coast	88,4	114,1	111,8	-2,0	+26,5
- Witwatersrand	88,4	114,1	111,8	-2,0	+26,5
Transformer oil	94,5	111,5	111,8	+0,3	+18,3

Bitumen	94,8	104,3	106,6	+2,2	+12,4
Tar	92,1	98,6	97,8	-0,8	+6,2
Bricks - Stock	98,0	104,5	104,5	0,0	+6,6
- Face	96,4	106,3	106,7	+0,4	+10,7
Cement building blocks	100,0	100,0	100,0	0,0	0,0
Sand	99,8	109,0	109,0	0,0	+9,2
Aggregated crushed stone	96,3	105,4	105,4	0,0	+9,4
Ordinary and extended cement	97,6	108,8	109,1	+0,3	+11,8
Natural stone, cut and sawn	97,0	101,4	101,4	0,0	+4,5
Glass, for building industry	98,5	108,5	108,8	+0,3	+10,5

Table 16 - Production Price Index for selected materials (concluded)

Base : 2000 = 100

Type of materials	Indices			% - change between	
	Mar 2000	Feb 2001	Mar 2001	Feb 2001 and Mar 2001	Mar 2000 and Mar 2001
Ironmongery	98,3	103,4	103,5	+0,1	+5,3
Drainage	95,3	109,2	109,2	0,0	+14,6
Plumbing	99,0	101,0	101,1	+0,1	+2,1
Ceramic and encaustic wall and floor tiles and mosaics	101,4	100,9	100,9	0,0	-0,5
Ceiling materials	96,2	109,4	109,4	0,0	+13,7
Partitioning materials	96,2	109,4	109,4	0,0	+13,7
Fibrous insulation - Preformed pipe sections	100,0	104,0	104,0	0,0	+4,0
- Batten board	100,7	109,7	109,7	0,0	+8,9
- Mattresses	100,7	108,8	108,8	0,0	+8,0
- Ceiling insulation	96,7	104,5	104,5	0,0	+8,1
Insulator, porcelain	100,0	100,0	100,0	0,0	0,0
Containers, glass	99,5	107,6	107,6	0,0	+8,1
Billets, mild steel	98,0	107,9	107,9	0,0	+10,1
Angles, mild steel	98,6	104,9	104,9	0,0	+6,4
Structural steel, unworked	103,8	94,5	94,5	0,0	-9,0
Reinforcing steel	100,0	100,0	100,0	0,0	0,0
Plate, mild steel	98,6	110,3	110,3	0,0	+11,9
Sheet, uncoated	104,7	92,6	92,6	0,0	-11,6
Sheet, galvanized	98,6	110,3	110,3	0,0	+11,9
Tinplate	96,0	101,3	101,3	0,0	+5,5
Steel tubes, pipes and fittings	99,7	100,5	100,5	0,0	+0,8
Copper, basic forms	93,5	108,5	109,9	+1,3	+17,5
Aluminium - Anodising	100,8	100,2	100,2	0,0	-0,6
- Basic forms	92,6	120,5	120,5	0,0	+30,1
- Extruded products	91,8	109,0	109,0	0,0	+18,7
- Sheetting	95,9	111,5	110,5	-0,9	+15,2
Bearings, ball and roller	98,1	106,6	106,8	+0,2	+8,9
Electrical contracting materials	97,5	104,6	104,7	+0,1	+7,4

Construction machinery (excluding trucks)	97,4	102,5	104,7	+2,1	+7,5
Trucks	97,3	106,5	106,5	0,0	+9,5
Civil engineering plant	97,4	105,1	105,5	+0,4	+8,3
Mining machinery	99,1	101,4	101,4	0,0	+2,3
Rubber industry`s indices:					
Natural rubber (imported)	100,0	100,0	100,0	0,0	0,0
Acrylonitrile butadiene rubber KRYNOC 805	100,0	100,0	100,0	0,0	0,0
Polychloroprene rubber WRT type (imported)	100,0	100,0	100,0	0,0	0,0
Carbon black - N774 (local)	100,0	100,0	100,0	0,0	0,0
- N660	100,0	100,0	100,0	0,0	0,0
Accelerator ORAC NS (local)	100,0	100,0	100,0	0,0	0,0
Anti-oxidant OROX - HR (local)	100,0	100,0	100,0	0,0	0,0
- Q	100,0	100,0	100,0	0,0	0,0
Anti-ozonant ORFLEX PP (local)	100,0	100,0	100,0	0,0	0,0
Bulk yarn - Nylon	100,0	100,0	100,0	0,0	0,0
- Cotton	100,0	100,0	100,0	0,0	0,0
Stearic acid (local)	100,0	100,0	100,0	0,0	0,0
Plasticiser DODP (local)	100,0	100,0	100,0	0,0	0,0
Coumarone indene resin (imported)	98,2	105,2	105,2	0,0	+7,1
Chlorobutyl rubber (imported)	100,0	100,0	100,0	0,0	0,0
EPDM Vistalon 5600 (imported)	100,0	100,0	100,0	0,0	0,0
Zinc oxide	100,0	100,0	100,0	0,0	0,0
Synthetic rubber - 1502	89,4	125,0	125,0	0,0	+39,8
- 1712	89,4	121,1	121,1	0,0	+35,5
Polybutadiene	89,6	128,5	128,5	0,0	+43,4
Processing oil	100,0	100,0	100,0	0,0	0,0
Bead wire	100,0	100,0	100,0	0,0	0,0
Steel cord wire	100,0	100,0	100,0	0,0	0,0
Nylon fabric - 940 X 2	100,0	100,0	100,0	0,0	0,0
- 1400 X 2	100,0	100,0	100,0	0,0	0,0
Rayon fabric - 1840 X 2	100,0	100,0	100,0	0,0	0,0

Table 17 - Seasonally adjusted PPI

Description	Nov 2000	Dec 2000	Jan 2001	Feb 2001	Mar 2001
All commodities for consumption in South Africa	103,4	104,5	104,9	105,6	106,1
Locally produced commodities	102,9	103,5	103,9	104,7	105,2
Imported commodities	104,3	106,4	107,1	107,8	108,7
Output of South African industry					
Total output	103,4	103,9	104,3	104,7	105,2

For South African consumption	102,9	103,5	103,9	104,7	105,2
Agriculture, Forestry and Fishing	98,9	101,6	103,1	105,5	105,8
Tobacco and Beverages	103,0	103,7	104,8	103,8	104,4
Textiles, Clothing and Footwear	101,1	102,5	102,4	104,2	104,2
Machinery and Transport equipment	103,2	103,6	104,0	104,5	105,0
Mining, Electricity, Gas and Water	104,1	102,4	102,9	104,7	104,7
Basic metals and Metal products	103,0	103,4	103,7	104,3	104,8
Food	100,9	101,2	101,5	102,0	102,8
Total Manufacturing	103,3	103,8	104,1	104,8	105,3

For more information	
	<p>Stats SA publishes approximately 400 different releases each year. It is not economically viable to produce them in more than one of South Africa's eleven official languages. Since the releases are used extensively, not only locally but also by international economic and social-scientific communities, Stats SA releases are published in English only.</p> <p>Stats SA has copyright on this publication. Users may apply the information as they wish, provided that they acknowledge Stats SA as the source of the basic data wherever they process, apply, utilise, publish or distribute the data: and also that they specify that the relevant application and analysis (where applicable) result from their own processing of data.</p> <p>Advance release calendar</p> <p>An advance release calendar is disseminated on http://www.statssa.gov.za</p> <p>Stats SA products</p> <p>A complete set of Stats SA publications is available at the Stats SA Library and the following libraries -</p>

Stats SA also provides a subscription service.

Electronic services

A large range of data are available via on-line services, diskette and computer printouts. For more details about our electronic data services, contact (012) 310 8095.

You can visit us on the Internet at: <http://www.statssa.gov.za>

Enquiries

Telephone number: (012) 310 8095/390/351/040 (user enquiries)

(012) 310 8421/170/077 (technical enquiries)

(012) 310 8161 (publishing)

Fax number: (012) 328 3932

e-mail: ppi@statssa.pwv.gov.za

Postal address: Private Bag x44, Pretoria, 0001

This page was designed by [Zelma de Bruin](#)