



**Statistics  
South Africa**

Preferred supplier of quality statistics



# Statistical release

## P0142.1

# PRODUCER PRICE INDEX (PPI)

## JULY 2008

**Embargoed until:  
28 August 2008  
11:30**

### Enquiries:

Dr. Hlabi Morudu  
(012) 310 8377

### Forthcoming issue:

**August 2008**

### Expected release date

**25 September 2008**

Statistics South Africa • Mbalo-mbalo dza Afrika Tshipembe • Tinhlayo-tiko ta Afrika-Dzonga • Dipalopalo tsa Aforika Borwa • Ezezibalo zaseNingizimu Afrika  
Dipalopalo tša Afrika Borwa • Dipalopalo tsa Afrika Borwa • Ubalo lwaseMzantsi Afrika • Telubalo eNingizimu Afrika • iNanimbalo leSewula Afrika • Statistiek Suid-Afrika

email: [info@statssa.gov.za](mailto:info@statssa.gov.za)  
www: [www.statssa.gov.za](http://www.statssa.gov.za)

170 Andries Street • Private Bag X44, 0001 Pretoria, South Africa  
Tel: +27(12) 310 8911, Fax: +27(12) 321 7381

## KEY FIGURES AS AT JULY 2008

### Producer Price Index and rates of change according to main components

Base: 2000 = 100

Producer Price Index components	indices			Percentage change between	
	Jul 2007	Jun 2008	Jul 2008	Jun 2008 and Jul 2008	Jul 2007 and Jul 2008
Domestic output	161,9	187,5	192,5	+2,7	+18,9
Exported commodities	159,0	171,7	170,6	-0,6	+7,3
Imported commodities	144,5	176,6	177,5	+0,5	+22,8

### KEY FINDINGS AS AT JULY 2008

The annual percentage change in the PPI is higher at +18,9% at July 2008 (i.e. the PPI at July 2008 compared with that at July 2007).

*The Producer Price Index (PPI) for domestic output shows an annual rate of change of 18,9% at July 2008 (i.e. the PPI at July 2008 compared with that at July 2007). This rate is 2,1 percentage points higher than the corresponding annual rate of 16,8% at June 2008 (i.e. the PPI at June 2008 compared with that at June 2007) (see Table 1 (A), p.10). This higher annual rate at July 2008 compared with that at June 2008 can be explained by increases in the annual rate of change in the Producer Price Indices for:*

- *Basic metals: the annual rate increased from +36,4% at June 2008 to +42,1% at July 2008.*
- *Electricity: the annual rate increased from +10,9% at June 2008 to +31,3% at July 2008.*
- *Food at manufacturing: the annual rate increased from +19,4% at June 2008 to +20,8% at July 2008.*
- *Fishing: the annual rate increased from +13,1% at June 2008 to +22,2% at July 2008.*
- *Chemicals and chemical products: the annual rate increased from +13,0% at June 2008 to +16,9% at July 2008.*
- *Metal products: the annual rate increased from +15,4% at June 2008 to +17,0% at July 2008.*
- *Rubber and plastic products: the annual rate increased from +13,0% at June 2008 to +15,8% at July 2008.*
- *Paper and paper products: the annual rate increased from +8,8% at June 2008 to +11,1% at July 2008.*

*These increases were partially counteracted by decreases in the annual rate of change for:*

- *Mining and quarrying: the annual rate decreased from +17,7% at June 2008 to +16,2% at July 2008.*
- *Tobacco products: the annual rate decreased from +10,1% at June 2008 to +4,8% at July 2008.*
- *Beverages: the annual rate decreased from +5,2% at June 2008 to +4,0% at July 2008.*

*From June 2008 to July 2008 the PPI for domestic output increased by 2,7%.*

The monthly increase of 2,7% in the PPI for domestic output is mainly due to monthly increases in the price indices for electricity (+1,6 percentage points), chemicals and chemical products (+0,3 of a percentage point), food at manufacturing (+0,2 of a percentage point), paper and paper products (+0,2 of a percentage point) and products of petroleum and coal (+0,1 of a percentage point). These increases were partially counteracted by decreases in the price indices for mining and quarrying products (-0,1 of a percentage point) and all other groups (-0,1 of a percentage point) (see table 3, p.11).

**The annual rate of change in the PPI for exported commodities is higher at +7,3% at July 2008 (i.e. the PPI at July 2008 compared with that at July 2007).**

**The PPI for exported commodities shows an annual rate of increase of 7,3% at July 2008 (i.e. the PPI at July 2008 compared with that at July 2007). This rate is 0,3 of a percentage point higher than the corresponding annual rate of 7,0% at June 2008 (i.e. the PPI at June 2008 compared with that at June 2007) (see Table 1(B), p.10).**

The annual increase of 7,3% in the PPI for exported commodities is mainly due to annual increases in the price indices of mining and quarrying products (+5,5 percentage points), all other groups (+1,1 percentage points), products of petroleum and coal (+0,4 of a percentage point), food at manufacturing (+0,3 of a percentage point) and non-electrical machinery and equipment (+0,2 of a percentage point). These increases were partially counteracted by a decrease in the price index for basic metals (-0,8 of a percentage point) (see Table 4, p.12).

**From June 2008 to July 2008 the PPI for exported commodities decreased by 0,6%.**

The monthly decrease of 0,6% in the PPI for exported commodities is mainly due to monthly decreases in the price indices of basic metals (-0,6 of a percentage point) and food at manufacturing (-0,1 of a percentage point) These decreases were partially counteracted by an increase in the price index of all other groups (+0,1 of a percentage point) (see Table 5, p.12).

**The annual rate of change in the PPI for imported commodities is lower at +22,8% at July 2008 (i.e. the PPI at July 2008 compared with that at July 2007).**

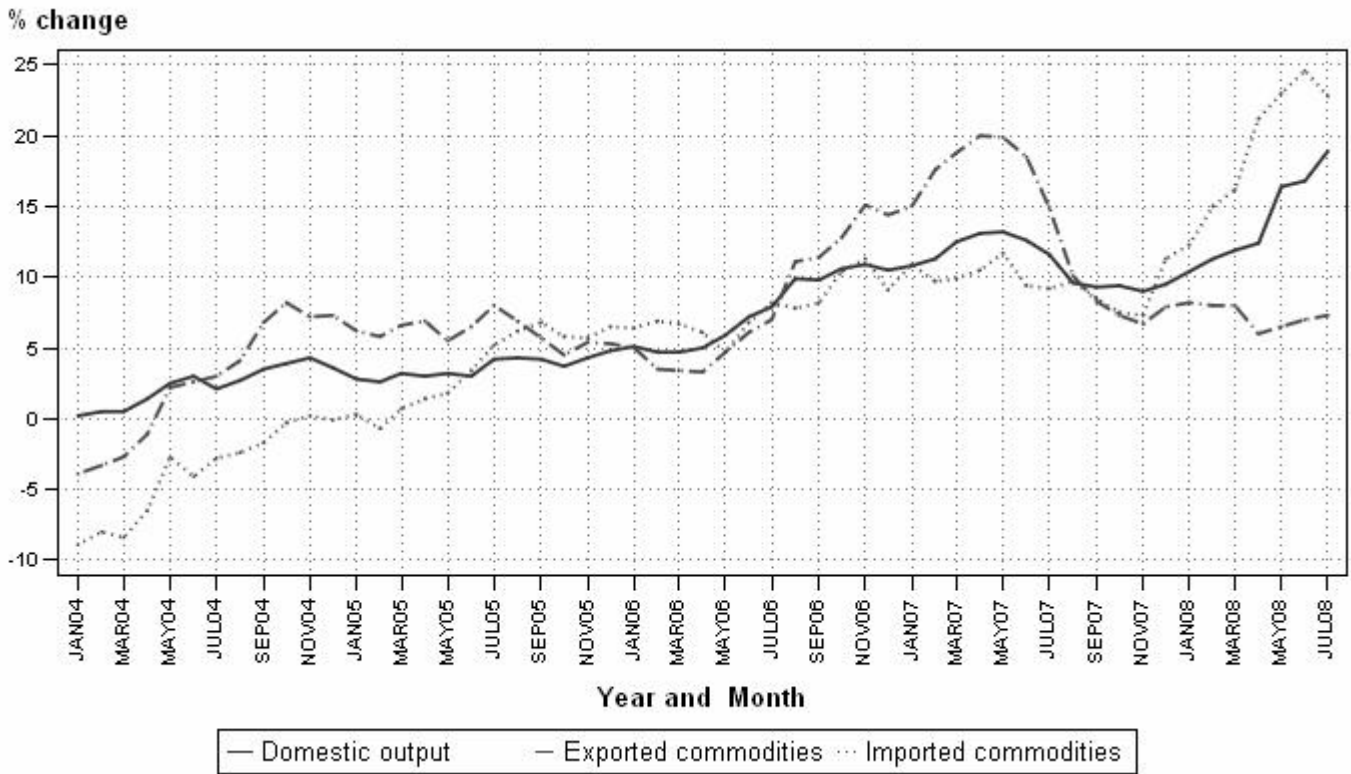
**The PPI for imported commodities shows an annual rate of increase of 22,8% at July 2008 (i.e. the PPI at July 2008 compared with that at July 2007). This rate is 1,8 percentage points lower than the corresponding annual rate of 24,6% at June 2008 (i.e. the PPI at June 2008 compared with that at June 2007) (see Table 1 (C), p.10).**

The annual increase of 22,8% in the PPI for imported commodities is mainly due to annual increases in the price indices for mining and quarrying products (+20,6 percentage points), chemicals and chemical products (+1,3 percentage points), food at manufacturing (+0,9 of a percentage point), non-electrical machinery and equipment (+0,6 of a percentage point), products of petroleum and coal (+0,4 of a percentage point) and transport equipment (+0,2 of a percentage point). These increases were partially counteracted by decreases in the price indices of all other groups (-1,7 percentage points) and radio, television and communication equipment and apparatus (-0,1 of a percentage point) (see Table 6, p.13).

**From June 2008 to July 2008 the PPI for imported commodities increased by 0,5%.**

The monthly increase of 0,5% in the PPI for imported commodities is mainly due to monthly increases in the price indices for mining and quarrying products (+0,5 of a percentage point) and chemicals and chemical products (+0,1 of a percentage point). These increases were partially counteracted by a decrease in the price index of food at manufacturing (-0,1 of a percentage point) (see Table 7, p.13).

**Figure 1 – Annual percentage change in the Producer Price Index:**



**Source: Stats SA**

**Note to users of the Producer Price Index**

**Consistency of year-on-year rates of change**

In general the annual changes of individual categories are not comparable with the annual changes of their subcomponents. This is caused not only by changes in products but also by changes in weights, which were introduced in 2008. These cause the year-on-year rates to be hybrid rates of change.

**Information on Product Prices Collected Quarterly**

To guide analysts, Stats SA has provided a note on the Stats SA website regarding product prices collected on a quarterly basis.

**P J Lehohla**  
**Statistician General: Statistics South Africa**

**CONTENTS****Page**

KEY FIGURES AS AT JULY 2008 .....	1
Figure 1 – Annual percentage change in the Producer Price Index:.....	3
NOTES	5
Table 1 The Producer Price Index (PPI) and the annual percentage change in the PPI on a monthly basis .....	10
Table 2 Contributions to the annual percentage change in the PPI for domestic output of South African.....	11
industry groups	
Table 3 Contributions to the monthly percentage change in the PPI for domestic output of South African.....	11
Table 4 Contributions to the annual percentage change in the PPI for exported commodities according to group.....	12
Table 5 Contributions to the monthly percentage change in the PPI for exported commodities according to group.....	12
Table 6 Contributions to the annual percentage change in the PPI for imported commodities according to group.....	13
Table 7 Contributions to the monthly percentage change in the PPI for imported commodities according to group.....	13
Table 8 Producer Price Index for domestic output of South African industry groups.....	14
Table 9 Producer Price Index for exported commodities according to group.....	16
Table 10 - Producer Price Index for imported commodities according to group.....	18
Base: 2000 = 100	
Table 11 - Producer Price Index for materials used in certain industries.....	20
Table 12 - Producer Price Index for materials used in certain industries.....	21
ADDITIONAL INFORMATION .....	24
EXPLANATORY NOTES.....	24
GLOSSARY .....	27
FOR MORE INFORMATION .....	28
<i>Produced by Stats SA</i> .....	28

**NOTES****Forthcoming issues****Issue**

August 2008  
 September 2008  
 October 2008  
 November 2008  
 December 2008  
 January 2009  
 February 2009

**Expected date of publication**

25 September 2008  
 30 October 2008  
 27 November 2008  
 18 December 2008  
 29 January 2009  
 26 February 2009  
 26 March 2009

**Purpose of the survey**

The surveys of prices of commodities in domestic output (including exports), imported commodities, and exported commodities are monthly surveys covering samples of manufacturers, importers and exporters in the South African economy. The results of the survey are used to compile the Producer Price Index (PPI) which indicates changes in Producer prices of locally produced commodities (including exports), imports and exports. These statistics are used by the private sector for contract price adjustments, and as a deflator in the compilation of national accounts.

**Rebasing**

The base year of the Producer Price Index (PPI) is still 2000 = 100. For historical rebasing see the statistical release P0142.4.

**Special Data Dissemination Standard (SDDS) of the International Monetary Fund (IMF)**

South Africa's data dissemination practices are assessed against the IMF's Special Data Dissemination Standard (SDDS). A detailed description of the SDDS can be found on the IMF's Dissemination Standards Bulletin Board on the internet at <http://dsbb.imf.org>. The SDDS prescribes two to four monitorable elements or good practice that can be observed, or monitored, by users of statistics. These include coverage, periodicity and timeliness, and access to a scheduled release calendar. The SDDS is in essence sets standards for the disclosure and transparency of statistics.

South Africa subscribed to the SDDS in 2 August 1996 and posted its metadata as of 27 September 1996. South Africa has met the SDDS specifications for the coverage, periodicity and timeliness of the data, and for the dissemination of advanced release calendars since 18 September 2000.

Stats SA is responsible for compiling and disseminating data on the Producer index, national accounts, government accounts, industry-based statistics, social statistics, the producer price index, consumer price index, labour market and population statistics.

**Reports on Observance of Standards and Codes (ROSC) of the International Monetary Fund (IMF)**

The IMF has worked on producing ROSC as a step to strengthen the international financial system. The objectives of ROSC include the promotion of increased transparency, and the implementation of internationally accepted standards and codes.

The data dissemination module of the ROSC provides a summary of South Africa's practices on the coverage, periodicity and timeliness of the data categories specified in the IMF's SDDS, and on the practices on the provision of advance release calendars for the data. The ROSC is complemented by an assessment of the quality of the Producer Price Index, using the Data Quality Assessment Framework (DQAF) as developed by the IMF's Statistics Department.

The DQAF assess data quality in terms of -

- ♦ Prerequisites of quality;
- ♦ Integrity;
- ♦ Methodological soundness;
- ♦ Accuracy and reliability;
- ♦ Serviceability; and
- ♦ Accessibility

For South Africa's compliance and performance on the quality of data see <http://www.imf.org/external/np/rosc/rosc.asp>.

**Methodological notes**

Stats SA released a new re-weighted PPI in January 2008 using a revised basket of indicator products.

The new basket of indicator products for locally produced commodities, import and export commodities was compiled through use of several information sources. The information sources used to select relevant indicator products in the different industries are indicated in table A.

**Table A – Information sources used to select products in different producer industries**

<b>Main products and industries</b>	<b>Sources</b>
<b>Locally produced items</b>	
Agriculture	Stats SA, Census of Agriculture, 2005
Fishing	Fishing Industry Handbook, 2005
Forestry	Commercial Timber Resources and Roundwood Processing in South Africa, 2005
Mining and quarrying	Department of Minerals and Energy
Manufacturing	Stats SA, Large Sample Survey, 2005
Electricity	Stats SA, Department of Minerals and Energy
Gas	Stats SA, Economic Activity Survey, 2005
Water	Department of Water Affairs and Forestry
<b>Imported items</b>	South African Revenue Services
<b>Exported items</b>	South African Revenue Services

The products were classified according to the relevant Central Product Classification (CPC) and at industry level were classified using Standard Industrial Classification (SIC) subgroups. At industry level, value added was used to determine industry weights. At product level, the products in each subgroup were sorted according to their value of sales. The products contributing to the top 80% of the sales in each subgroup were selected as indicator products. These are the products for which prices will be monitored periodically by Stats SA.

The questionnaire(s) for each subgroup, which are used to collect the relevant price information from respondents, were adjusted to include the newly selected indicator products. Although the products on each questionnaire differ from the other questionnaires, their layout is identical.

For each indicator product a sample of manufacturers, importers and exporters was drawn from all the manufacturers, importers and exporters who manufacture, import or export the specific indicator product. The list of manufacturers, importers and exporters (sampling frame), from which the samples were drawn, are indicated in table B.

**Table B – Sampling frame**

<b>Main products and industries</b>	<b>Sources</b>
<b>Locally produced and sold products</b>	
Agriculture	List of fresh produce markets
Mining and quarrying	List of mines
Forestry	List obtained from Department of Water Affairs and Forestry Old sample of PPI
Fishing	Old sample of PPI List obtained from other sources
Manufacturing	List of manufacturers from Stats SA, Large Sample Survey, 2005 List of manufactures from Stats SA, Business Register List of producers from industry associations
Electricity and gas	List of producers according to Stats SA, Economic Activity Survey
Water	Old sample of PPI List obtained from Department of Water Affairs and Forestry
<b>Imported products</b>	List of importers obtained from South African Revenue Services
<b>Exported products</b>	List of exporters obtained from South African Revenue Services



**Table 1 The Producer Price Index (PPI) and the annual percentage change in the PPI on a monthly basis****Base: 2000 = 100****A) Domestic output**

Year		Jan	Feb	Mar	Apr	May	Jun	Jul	Aug	Sep	Oct	Nov	Dec	Avg
2006	Index	134,8	134,9	135,6	136,9	138,7	142,6	145,1	148,3	147,2	148,3	149,5	149,1	142,5
	%	+5,1	+4,7	+4,7	+5,0	+5,9	+7,2	+7,9	+9,9	+9,8	+10,6	+10,9	+10,5	+7,6
2007	Index	149,3	150,2	152,5	154,9	157,0	160,5	161,9	162,5	160,9	162,3	162,9	163,3	158,1
	%	+10,8	+11,3	+12,5	+13,1	+13,2	+12,6	+11,6	+9,6	+9,3	+9,4	+9,0	+9,5	+10,9
2008	Index	164,9	167,2	170,6	174,1	182,7	187,5	192,5	..	..	..	..	..	..
	%	+10,4	+11,3	+11,9	+12,4	+16,4	+16,8	+18,9	..	..	..	..	..	..

**B) Exported commodities**

Year		Jan	Feb	Mar	Apr	May	Jun	Jul	Aug	Sep	Oct	Nov	Dec	Avg
2006	Index	129,3	128,1	129,1	130,1	132,3	135,4	138,4	143,7	145,7	147,2	150,0	148,4	138,1
	%	+5,0	+3,5	+3,4	+3,3	+4,7	+6,1	+7,0	+11,1	+11,4	+12,8	+15,1	+14,4	+8,1
2007	Index	148,7	150,6	153,4	156,1	158,6	160,5	159,0	158,2	157,8	157,9	160,0	160,1	156,7
	%	+15,0	+17,6	+18,8	+20,0	+19,9	+18,5	+14,9	+10,1	+8,3	+7,3	+6,7	+7,9	+13,7
2008	Index	160,9	162,7	165,6	165,5	168,9	171,7	170,6	..	..	..	..	..	..
	%	+8,2	+8,0	+8,0	+6,0	+6,5	+7,0	+7,3	..	..	..	..	..	..

**C) Imported commodities**

Year		Jan	Feb	Mar	Apr	May	Jun	Jul	Aug	Sep	Oct	Nov	Dec	Avg
2006	Index	124,1	123,9	124,5	126,2	125,8	129,5	132,3	133,0	135,4	138,0	139,2	135,9	130,6
	%	+6,4	+6,9	+6,7	+6,1	+4,7	+6,8	+8,2	+7,8	+8,2	+10,4	+11,3	+9,1	+7,7
2007	Index	137,6	135,9	136,8	139,5	140,5	141,7	144,5	145,9	146,9	148,3	149,4	151,3	143,1
	%	+10,9	+9,7	+9,9	+10,5	+11,7	+9,4	+9,2	+9,7	+8,5	+7,5	+7,3	+11,3	+9,6
2008	Index	154,5	156,3	159,0	169,1	172,8	176,6	177,5	..	..	..	..	..	..
	%	+12,3	+15,0	+16,2	+21,2	+23,0	+24,6	+22,8	..	..	..	..	..	..

**Table 2 Contributions to the annual percentage change in the PPI for domestic output of South African industry groups**

Group	Contribution at Jun 2008	Contribution at Jul 2008
Agriculture	+0,5	+0,5
Forestry	+0,1	+0,1
Fishing	0,0	+0,1
Mining and quarrying	+3,8	+3,5
Food at manufacturing	+1,1	+1,2
Beverages	+0,2	+0,1
Tobacco products	+0,1	0,0
Wood and wood products	+0,2	+0,2
Paper and paper products	+0,4	+0,5
Products of petroleum and coal	+2,9	+2,9
Chemicals and chemical products	+0,8	+1,0
Rubber and plastic products	+0,3	+0,4
Non-metallic mineral products	+0,1	+0,1
Basic metals	+3,0	+3,3
Metal products	+0,5	+0,6
Non-electrical machinery and equipment	+0,4	+0,4
Electrical machinery and apparatus	+0,1	+0,1
Transport	+0,1	+0,1
Other manufactures	+0,2	+0,2
Electricity	+0,7	+2,2
Gas and water	+0,2	+0,2
All other groups	+1,1	+1,2
All groups	+16,8	+18,9

**Table 3 Contributions to the monthly percentage change in the PPI for domestic output of South African industry groups**

Group	Contribution at Jun 2008	Contribution at Jul 2008
Agriculture	+0,2	+0,2
Mining and quarrying	-0,4	-0,1
Food at manufacturing	+0,1	+0,2
Paper and paper products	0,0	+0,2
Products of petroleum and coal	+0,7	+0,1
Chemicals and chemical products	+0,1	+0,3
Rubber and plastic products	0,0	+0,1
Basic metals	0,0	+0,1
Electricity	+2,0	+1,6
Gas and water	0,0	+0,1
All other groups	-0,1	-0,1
All groups	+2,6	+2,7

**Table 4 Contributions to the annual percentage change in the PPI for exported commodities according to group**

Group	Contribution at Jun 2008	Contribution at Jul 2008
Agriculture	+0,1	+0,1
Mining and quarrying	+5,9	+5,5
Food at manufacturing	+0,4	+0,3
Beverages	+0,1	+0,1
Wood and wood products	+0,1	+0,1
Paper and paper products	+0,1	+0,1
Products of petroleum and coal	+0,6	+0,4
Rubber and plastic products	0,0	+0,1
Basic metals	-2,4	-0,8
Non-electrical machinery and equipment	+0,2	+0,2
Transport	+0,1	+0,1
All other groups	+1,8	+1,1
All groups	+7,0	+7,3

**Table 5 Contributions to the monthly percentage change in the PPI for exported commodities according to group**

Group	Contribution at Jun 2008	Contribution at Jul 2008
Mining and quarrying	+0,4	0,0
Food at manufacturing	+0,2	-0,1
Basic metals	+0,9	-0,6
All other groups	+0,2	+0,1
All groups	+1,7	-0,6

**Table 6 Contributions to the annual percentage change in the PPI for imported commodities according to group**

Group	Contribution at Jun 2008	Contribution at Jul 2008
Agriculture	+0,1	0,0
Mining and quarrying	+23,0	+20,6
Food at manufacturing	+1,1	+0,9
Paper and paper products	+0,1	+0,1
Products of petroleum and coal	+0,4	+0,4
Chemicals and chemical products	+1,4	+1,3
Non-metallic mineral products	+0,1	+0,1
Basic metals	0,0	+0,1
Metal products	+0,1	+0,1
Non-electrical machinery and equipment	+0,6	+0,6
Electrical machinery and apparatus	+0,1	+0,1
Radio, television and communication equipment and apparatus	0,0	-0,1
Medical appliances, precision and optical instruments, watches and clocks	+0,1	+0,1
Transport	+0,2	+0,2
All other groups	-2,7	-1,7
All groups	+24,6	+22,8

**Table 7 Contributions to the monthly percentage change in the PPI for imported commodities according to group**

Group	Contribution at Jun 2008	Contribution at Jul 2008
Mining and quarrying	+1,9	+0,5
Food at manufacturing	0,0	-0,1
Products of petroleum and coal	+0,1	0,0
Chemicals and chemical products	0,0	+0,1
Non-electrical machinery and equipment	+0,1	0,0
Transport	-0,1	0,0
All other groups	+0,2	0,0
All groups	+2,2	+0,5

**Table 8 Producer Price Index for domestic output of South African industry groups**  
**Base: 2000 = 100**

Origin/Group	weight	indices			% change between	
		Jul 2007	Jun 2008	Jul 2008	Jun 2008 and Jul 2008	Jul 2007 and Jul 2008
All groups	100,00	161,9	187,5	192,5	+2,7	+18,9
<b>1. Agriculture, forestry, fishing and mining</b>	29,36	172,6	197,6	198,1	+0,3	+14,8
<b>1.1 Agriculture</b>	8,22	176,0	183,1	186,8	+2,0	+6,1
<b>1.1.1 Food</b>	3,89	169,8	168,5	172,8	+2,6	+1,8
Grain	0,87	223,4	281,1	271,0	-3,6	+21,3
Vegetables	1,13	155,8	135,4	137,5	+1,6	-11,7
Fruits and nuts	1,43	106,4	93,3	101,8	+9,1	-4,3
Oil seeds	0,13	285,2	386,9	410,0	+6,0	+43,8
Sugar cane	0,30	156,3	175,4	189,1	+7,8	+21,0
Other food	0,04	152,2	161,7	161,7	0,0	+6,2
<b>1.1.2 Live animals and animal products</b>	3,68	170,6	196,9	197,6	+0,4	+15,8
Live animals	2,91	173,2	201,7	202,5	+0,4	+16,9
Milk	0,25	127,5	158,3	156,1	-1,4	+22,4
Eggs	0,35	184,7	216,7	219,1	+1,1	+18,6
Other raw animal products	0,17	.	178,5	178,5	0,0	..
<b>1.1.3 Other agricultural products</b>	0,65	278,1	218,6	235,7	+7,8	-15,2
<b>1.2 Forestry</b>	1,48	116,1	128,2	128,2	0,0	+10,4
<b>1.3 Fishing</b>	0,25	218,5	244,2	267,0	+9,3	+22,2
<b>1.4 Mining and quarrying</b>	19,41	180,9	211,3	210,2	-0,5	+16,2
Coal and lignite	4,97	204,6	283,1	282,1	-0,4	+37,9
Crude petroleum and natural gas	0,62	.	94,4	93,0	-1,5	..
Metal ores	11,48	185,6	200,1	199,3	-0,4	+7,4
Other minerals	2,34	135,8	141,5	138,7	-2,0	+2,1
<b>2. Manufacturing</b>	62,30	158,6	185,9	188,9	+1,6	+19,1
<b>2.1 Food at manufacturing</b>	5,87	164,3	193,0	198,5	+2,8	+20,8
Meat and meat products	0,56	183,4	203,4	207,0	+1,8	+12,9
Prepared and preserved fish	0,18	168,7	175,9	174,0	-1,1	+3,1
Fruits and vegetable products	0,56	137,5	145,1	145,9	+0,6	+6,1
Fats and oils	0,43	174,5	268,4	283,7	+5,7	+62,6
Dairy products	0,98	179,7	199,1	201,0	+1,0	+11,9
Grain mill products and bakery products	0,84	150,7	191,6	198,6	+3,7	+31,8
Sugar	0,44	132,4	131,8	137,1	+4,0	+3,5
Coffee and tea	0,16	140,1	149,4	150,3	+0,6	+7,3
Other food products	1,72	165,2	197,5	205,5	+4,1	+24,4
<b>2.2 Beverages</b>	3,04	168,1	174,6	174,8	+0,1	+4,0
Alcoholic beverages	1,73	176,3	183,4	183,6	+0,1	+4,1
Non-alcoholic beverages	1,31	146,1	150,4	150,7	+0,2	+3,1
<b>2.3 Tobacco products</b>	0,59	193,9	203,2	203,2	0,0	+4,8
<b>2.4 Textile and made-up goods</b>	1,06	130,0	135,3	135,3	0,0	+4,1
Yarn and thread; woven and tufted textile fabrics (prepared for spinning)	0,35	128,8	141,8	141,8	0,0	+10,1
Textile articles other than apparel	0,71	132,2	133,9	133,8	-0,1	+1,2
<b>2.5 Wearing Apparel</b>	1,48	123,4	127,7	127,7	0,0	+3,5
Knitted or crocheted fabrics	0,38	130,7	132,5	132,5	0,0	+1,4
Other wearing apparel	1,09	121,6	126,7	126,7	0,0	+4,2
<b>2.6 Leather and leather products</b>	0,32	110,6	109,3	109,6	+0,3	-0,9
<b>2.7 Footwear</b>	0,27	133,5	135,3	137,5	+1,6	+3,0
<b>2.8 Wood and wood products</b>	1,40	167,0	184,8	187,0	+1,2	+12,0
<b>2.9 Paper and paper products</b>	4,96	146,6	156,6	162,8	+4,0	+11,1
Pulp, paper and paperboard	3,20	133,4	141,0	148,1	+5,0	+11,0
Printing, publishing and allied industries	1,77	156,6	169,6	173,0	+2,0	+10,5
<b>2.10 Products of petroleum and coal</b>	4,98	234,6	326,8	330,3	+1,1	+40,8

NB: Annual rate not comparable with annual rates of subcomponents.

**Table 8 - Producer Price Index for Domestic output of South African industry groups (concluded)**  
**Base: 2000 = 100**

Origin/Group	weight	indices			% change between	
		Jul 2007	Jun 2008	Jul 2008	Jun 2008 and Jul 2008	Jul 2007 and Jul 2008
<b>2.11 Chemicals and chemical products</b>	6,74	146,5	162,8	171,3	+5,2	+16,9
<b>2.11.1 Basic Chemicals</b>	3,81	152,4	179,2	188,3	+5,1	+23,6
Basic organic chemicals	0,73	.	243,5	243,5	0,0	..
Basic inorganic chemicals	1,92	.	139,9	145,4	+3,9	..
Fertilisers and pesticides	0,41	182,2	301,2	349,2	+15,9	+91,7
Other basic chemicals	0,75	145,2	163,1	167,4	+2,6	+15,3
<b>2.11.2 Compound chemical products</b>	2,93	141,0	145,8	153,8	+5,5	+9,1
Paints, vanishers and related products; artists' colours; ink	1,49	.	182,4	195,9	+7,4	..
Pharmaceutical products	0,36	129,0	127,9	128,5	+0,5	-0,4
Soap, cleaning preparations, perfumes and toilet preparations	0,63	.	142,2	146,9	+3,3	..
Other compound chemical products	0,45	144,5	155,3	161,3	+3,9	+11,6
<b>2.12 Rubber and plastic products</b>	2,59	153,9	169,9	178,2	+4,9	+15,8
Rubber products	1,13	184,4	198,0	206,4	+4,2	+11,9
Plastic products	1,46	140,5	158,3	166,9	+5,4	+18,8
<b>2.13 Non-metallic mineral products</b>	1,97	167,6	176,9	178,5	+0,9	+6,5
Glass and glass products	0,04	144,0	143,8	147,8	+2,8	+2,6
Other non-metallic minerals products n.e.c.	1,93	175,6	187,7	189,4	+0,9	+7,9
<b>2.14 Basic Metals</b>	6,66	192,1	271,4	272,9	+0,6	+42,1
Basic iron and steel	4,12	191,9	337,4	339,3	+0,6	+76,8
Rolled, drawn and folded products	2,54	.	176,2	177,0	+0,5	..
<b>2.15 Metal products</b>	3,34	159,5	184,1	186,6	+1,4	+17,0
Structural metal products and parts thereof	1,27	169,3	196,0	197,2	+0,6	+16,5
Other fabricated metal products	2,07	153,3	176,7	179,9	+1,8	+17,4
<b>2.16 Non-electrical machinery and equipment</b>	2,35	136,1	161,2	161,2	0,0	+18,4
General purpose machinery	1,99	127,3	154,0	154,0	0,0	+21,0
Special purpose machinery	0,24	139,8	151,1	151,1	0,0	+8,1
Domestic appliances and parts thereof	0,12	132,6	134,4	134,4	0,0	+1,4
<b>2.17 Office, accounting and computing machinery</b>	0,20	100,1	100,4	100,4	0,0	+0,3
<b>2.18 Electrical machinery and apparatus</b>	1,93	205,5	216,1	216,2	0,0	+5,2
Electric motors, generators and transformers, and parts thereof	0,07	236,2	258,9	258,9	0,0	+9,6
Electricity distribution and control apparatus, and parts thereof	0,87	146,5	150,3	150,4	+0,1	+2,7
Insulated wire and cable; optical fibre cables	0,72	292,2	308,0	308,1	0,0	+5,4
Other electrical machinery and apparatus	0,26	136,9	145,1	145,3	+0,1	+6,1
<b>2.19 Radio, television and communication equipments and parts thereof</b>	0,48	130,2	128,2	129,0	+0,6	-0,9
<b>2.20 Medical appliances, precision and optical instruments, watches and clocks</b>	0,29	136,2	140,1	140,4	+0,2	+3,1
<b>2.21 Transport</b>	5,83	132,9	135,9	135,9	0,0	+2,3
<b>2.21.1 Motor vehicles, parts and accessories thereof</b>	2,12	133,8	140,3	140,3	0,0	+4,9
Motor vehicles	2,11	131,0	137,3	137,3	0,0	+4,8
Parts and accessories for motor vehicles	0,01	142,0	158,6	159,7	+0,7	+12,5
<b>2.21.2 Bodies (coachwork) for motor vehicles, trailers and semi-trailers; parts</b>	0,09	116,8	120,3	120,3	0,0	+3,0
Bodies for motor vehicles	0,03	.	156,9	156,9	0,0	..
Trailers, semi-trailer and containers	0,04	.	113,9	113,9	0,0	..
Parts for motor vehicles bodies, trailers, semi-trailers and containers	0,01	.	144,5	144,5	0,0	..
<b>2.21.3 Other transport equipment</b>	3,62	106,8	106,1	106,1	0,0	-0,7
<b>2.22 Furniture</b>	1,01	132,6	135,5	136,5	+0,7	+2,9
<b>2.23 Other manufactures</b>	4,95	124,9	131,6	131,7	+0,1	+5,4
<b>3. Electricity, gas, steam and water</b>	8,33	168,9	166,4	202,3	+21,6	+19,8
Electricity	6,86	166,4	173,6	218,4	+25,8	+31,3
Water and gas	1,47	201,1	208,7	219,2	+5,0	+9,0

NB: Annual rate not comparable with annual rates of subcomponents.

**Table 9 Producer Price Index for exported commodities according to group**  
**Base: 2000 = 100**

Origin/Group	weight	indices			% change between	
		Jul 2007	Jun 2008	Jul 2008	Jun 2008 and Jul 2008	Jul 2007 and Jul 2008
<b>All groups</b>	100,00	159,0	171,7	170,6	-0,6	+7,3
<b>1. Agriculture, forestry, fishing and mining</b>	30,34	164,6	193,4	193,6	+0,1	+17,6
<b>1.1 Agriculture</b>	1,62	145,9	160,5	159,6	-0,6	+9,4
<b>1.1.1 Food</b>	1,50	143,6	159,0	158,0	-0,6	+10,0
Grain	0,19	231,7	257,7	252,2	-2,1	+8,8
Vegetables	0,31	100,0	100,0	100,0	0,0	0,0
Fruits and nuts	0,95	64,5	69,7	69,8	+0,1	+8,2
Oil seeds	0,03	.	100,0	100,0	0,0	..
Sugar cane	0,02	.	100,0	100,0	0,0	..
<b>1.1.2 Live animals and animal products</b>	0,04	182,5	190,6	188,5	-1,1	+3,3
Live animals	0,01	78,7	100,0	100,0	0,0	+27,1
Other raw animal products	0,03	.	202,4	198,8	-1,8	..
<b>1.1.3 Other agricultural products</b>	0,08	174,7	160,8	160,9	+0,1	-7,9
<b>1.2 Forestry</b>	0,09	100,0	99,6	99,6	0,0	-0,4
<b>1.3 Fishing</b>	0,06	211,7	234,1	240,3	+2,6	+13,5
<b>1.4 Mining and quarrying</b>	28,57	167,5	198,1	198,2	+0,1	+18,3
Coal and lignite	6,22	231,0	278,9	286,4	+2,7	+24,0
Metal ores	19,82	151,0	181,7	180,0	-0,9	+19,2
Other minerals	2,53	130,2	133,8	133,6	-0,1	+2,6
<b>2. Manufacturing</b>	69,66	156,6	162,0	160,3	-1,0	+2,4
<b>2.1 Food at manufacturing</b>	2,20	130,8	162,5	155,7	-4,2	+19,0
Meat and meat products	0,09	116,5	122,0	122,9	+0,7	+5,5
Prepared and preserved fish	0,24	136,0	138,1	138,1	0,0	+1,5
Fruits and vegetable products	0,63	121,8	128,3	128,7	+0,3	+5,7
Fats and oils	0,09	162,2	199,4	199,4	0,0	+22,9
Dairy products	0,03	139,3	143,1	143,1	0,0	+2,7
Grain mill products and bakery products	0,07	137,6	200,1	181,8	-9,1	+32,1
Sugar	0,78	127,9	162,7	152,2	-6,5	+19,0
Other food products	0,27	145,4	164,4	164,4	0,0	+13,1
<b>2.2 Beverages</b>	1,55	120,8	128,0	128,0	0,0	+6,0
Alcoholic beverages	1,39	121,8	128,9	128,9	0,0	+5,8
Non-alcoholic beverages	0,16	109,2	117,6	117,6	0,0	+7,7
<b>2.3 Tobacco products</b>	0,19	118,4	118,4	118,4	0,0	0,0
<b>2.4 Textile and made-up goods</b>	0,56	171,5	175,2	175,2	0,0	+2,2
Yarn and thread; woven and tufted textile fabrics (prepared for spinning)	0,03	195,6	199,9	199,9	0,0	+2,2
Textile articles other than apparel	0,53	115,6	118,0	118,0	0,0	+2,1
<b>2.5 Wearing Apparel</b>	0,19	108,5	108,5	108,5	0,0	0,0
Knitted or crocheted fabrics	0,14	118,3	118,3	118,3	0,0	0,0
Other wearing apparel	0,06	106,0	106,0	106,0	0,0	0,0
<b>2.6 Leather and leather products</b>	0,29	101,4	98,3	98,3	0,0	-3,1
<b>2.7 Footwear</b>	0,04	159,1	166,7	166,7	0,0	+4,8
<b>2.8 Wood and wood products</b>	0,83	164,1	181,9	181,9	0,0	+10,8
<b>2.9 Paper and paper products</b>	1,80	127,4	134,2	134,0	-0,1	+5,2
Pulp, paper and paperboard	1,52	129,6	137,6	137,4	-0,1	+6,0
Printing, publishing and allied industries	0,28	112,9	113,4	113,4	0,0	+0,4
<b>2.10 Products of petroleum and coal</b>	2,37	230,0	257,3	259,4	+0,8	+12,8

NB: Annual rate not comparable with annual rates of subcomponents.

**Table 9 - Producer Price Index for exported commodities according to group (concluded)**  
**Base: 2000 = 100**

	weight	indices			% change between	
		Jul 2007	Jun 2008	Jul 2008	Jun 2008 and Jul 2008	Jul 2007 and Jul 2008
<b>2.11 Chemicals and chemical products</b>	5,14	131,3	131,6	130,6	-0,8	-0,5
<b>2.11.1 Basic Chemicals</b>	3,94	137,6	136,8	135,4	-1,0	-1,6
Basic organic chemicals	0,81	.	257,4	257,4	0,0	..
Basic inorganic chemicals	2,10	.	130,7	127,3	-2,6	..
Other basic chemicals	1,03	137,2	136,8	136,8	0,0	-0,3
<b>2.11.2 Compound chemical products</b>	1,21	115,3	118,8	119,3	+0,4	+3,5
Paints, vanishers and related products; artists' colours; ink	0,03	.	173,9	173,9	0,0	..
Soap, cleaning preparations, perfumes and toilet preparations	0,76	.	141,0	141,7	+0,5	..
Other compound chemical products	0,41	114,1	114,6	114,6	0,0	+0,4
<b>2.12 Rubber and plastic products</b>	0,90	135,4	142,8	147,0	+2,9	+8,6
Rubber products	0,50	166,0	176,0	178,3	+1,3	+7,4
Plastic products	0,40	103,7	108,4	114,5	+5,6	+10,4
<b>2.13 Non-metallic mineral products</b>	0,67	129,7	137,8	137,8	0,0	+6,2
Other non-metallic minerals products n.e.c.	0,67	132,0	137,8	137,8	0,0	+4,4
<b>2.14 Basic Metals</b>	33,23	199,2	198,4	195,2	-1,6	-2,0
Basic iron and steel	7,33	192,4	245,4	243,7	-0,7	+26,7
Rolled, drawn and folded products	4,32	162,3	115,3	110,0	-4,6	-32,2
Other non-ferrous basic metals and articles	21,58	205,1	177,8	177,8	0,0	-13,3
<b>2.15 Metal products</b>	1,31	164,3	166,0	166,4	+0,2	+1,3
Structural metal products and parts thereof	0,54	173,9	181,2	181,9	+0,4	+4,6
Other fabricated metal products	0,77	154,3	150,4	150,5	+0,1	-2,5
<b>2.16 Non-electrical machinery and equipment</b>	5,73	130,9	135,5	135,5	0,0	+3,5
General purpose machinery	2,35	122,4	125,7	125,7	0,0	+2,7
Special purpose machinery	1,61	137,8	141,8	141,8	0,0	+2,9
Domestic appliances and parts thereof	1,76	125,9	134,3	134,3	0,0	+6,7
<b>2.17 Office, accounting and computing machinery</b>	0,23	99,7	99,7	99,7	0,0	0,0
<b>2.18 Electrical machinery and apparatus</b>	0,83	137,3	140,0	140,0	0,0	+2,0
Electric motors, generators and transformers, and parts thereof	0,10	171,8	169,0	169,0	0,0	-1,6
Electricity distribution and control apparatus, and parts thereof	0,15	138,9	141,4	141,4	0,0	+1,8
Insulated wire and cable; optical fibre cables	0,25	169,7	176,9	176,9	0,0	+4,2
Other electrical machinery and apparatus	0,34	118,6	121,6	121,6	0,0	+2,5
<b>2.19 Radio, television and communication equipments and parts thereof</b>	1,14	101,0	100,0	100,0	0,0	-1,0
<b>2.20 Medical appliances, precision and optical instruments, watches and clocks</b>	0,54	138,9	136,9	138,2	+0,9	-0,5
<b>2.21 Transport</b>	7,33	116,9	118,8	118,8	0,0	+1,6
<b>2.21.1 Motor vehicles, parts and accessories thereof</b>	1,63	120,0	122,9	122,9	0,0	+2,4
Motor vehicles	1,28	103,5	104,3	104,3	0,0	+0,8
Parts and accessories for motor vehicles	0,35	146,4	153,0	153,0	0,0	+4,5
<b>2.21.2 Bodies (coachwork) for motor vehicles, trailers and semi-trailers; parts</b>	1,68	101,1	130,9	130,9	0,0	+29,5
Trailers, semi-trailer and containers	0,71	.	101,0	101,0	0,0	..
Parts for motor vehicles bodies, trailers, semi-trailers and containers	0,97	.	150,5	150,5	0,0	..
<b>2.21.3 Other transport equipment</b>	4,03	104,9	105,7	105,7	0,0	+0,8
<b>2.22 Furniture</b>	1,04	100,6	100,5	100,5	0,0	-0,1
<b>2.23 Other manufactures</b>	1,53	102,5	104,1	104,1	0,0	+1,6

NB: Annual rate not comparable with annual rates of subcomponents.



**Table 10 - Producer Price Index for imported commodities according to group**  
**Base: 2000 = 100**

	weight	indices			% change between	
		Jul 2007	Jun 2008	Jul 2008	Jun 2008 and Jul 2008	Jul 2007 and Jul 2008
<b>All groups</b>	100,00	144,5	176,6	177,5	+0,5	+22,8
<b>1. Agriculture, forestry, fishing and mining</b>	16,75	235,5	399,7	404,8	+1,3	+71,9
<b>1.1 Agriculture</b>	0,93	142,1	153,2	148,8	-2,9	+4,7
<b>1.1.1 Food</b>	0,53	152,6	157,8	150,9	-4,4	-1,1
Grain	0,40	155,4	150,1	140,9	-6,1	-9,3
Vegetables	0,01	.	103,1	97,9	-5,0	..
Fruits and nuts	0,03	143,5	155,1	165,2	+6,5	+15,1
Oil seeds	0,03	.	100,0	100,0	0,0	..
Other food	0,06	148,4	255,8	259,5	+1,4	+74,9
<b>1.1.2 Live animals and animal products</b>	0,06	121,4	122,9	122,9	0,0	+1,2
Live animals	0,02	104,2	105,8	105,8	0,0	+1,5
Other raw animal products	0,04	.	175,0	175,0	0,0	..
<b>1.1.3 Other agricultural products</b>	0,33	114,5	128,4	128,8	+0,3	+12,5
<b>1.2 Forestry</b>	0,01	100,0	100,0	100,0	0,0	0,0
<b>1.3 Fishing</b>	0,08	101,3	101,3	101,3	0,0	0,0
<b>1.4 Mining and quarrying</b>	15,73	257,1	440,1	446,1	+1,4	+73,5
Coal and lignite	0,02	100,9	103,2	103,2	0,0	+2,3
Crude petroleum and natural gas	12,84	.	503,3	510,8	+1,5	..
Metal ores	0,76	96,3	96,2	96,2	0,0	-0,1
Other minerals	2,11	262,5	323,7	319,4	-1,3	+21,7
<b>2. Manufacturing</b>	83,25	131,0	138,5	138,5	0,0	+5,7
<b>2.1 Food at manufacturing</b>	3,24	150,9	194,2	190,4	-2,0	+26,2
Meat and meat products	0,70	166,9	185,3	186,0	+0,4	+11,4
Prepared and preserved fish	0,07	120,0	121,1	121,1	0,0	+0,9
Fruits and vegetable products	0,06	133,9	137,5	137,5	0,0	+2,7
Fats and oils	0,96	171,4	238,5	222,1	-6,9	+29,6
Dairy products	0,13	158,7	169,8	170,6	+0,5	+7,5
Grain mill products and bakery products	0,72	143,4	223,6	226,6	+1,3	+58,0
Sugar	0,05	148,5	192,5	192,5	0,0	+29,6
Coffee and tea	0,02	130,0	139,7	139,7	0,0	+7,5
Other food products	0,52	123,5	134,8	138,9	+3,0	+12,5
<b>2.2 Beverages</b>	0,58	148,8	152,9	152,9	0,0	+2,8
Alcoholic beverages	0,36	150,3	156,0	156,0	0,0	+3,8
Non-alcoholic beverages	0,23	108,1	109,6	109,6	0,0	+1,4
<b>2.3 Tobacco products</b>	0,05	122,5	122,5	122,5	0,0	0,0
<b>2.4 Textile and made-up goods</b>	1,35	115,1	117,8	117,9	+0,1	+2,4
Yarn and thread; woven and tufted textile fabrics (prepared for spinning)	0,95	109,0	110,8	110,8	0,0	+1,7
Textile articles other than apparel	0,40	125,4	129,7	130,2	+0,4	+3,8
<b>2.5 Wearing Apparel</b>	0,76	120,6	121,6	121,8	+0,2	+1,0
Knitted or crocheted fabrics	0,46	120,5	121,9	121,8	-0,1	+1,1
Other wearing apparel	0,30	120,8	120,3	121,0	+0,6	+0,2
<b>2.6 Leather and leather products</b>	0,41	127,8	132,3	132,9	+0,5	+4,0
<b>2.7 Footwear</b>	0,67	116,9	118,2	118,7	+0,4	+1,5
<b>2.8 Wood and wood products</b>	0,63	135,9	144,4	144,4	0,0	+6,3
<b>2.9 Paper and paper products</b>	1,87	127,2	134,3	134,4	+0,1	+5,7
Pulp, paper and paperboard	1,32	128,6	137,3	137,4	+0,1	+6,8
Printing, publishing and allied industries	0,55	126,0	127,8	128,0	+0,2	+1,6
<b>2.10 Products of petroleum and coal</b>	2,20	117,4	142,9	144,6	+1,2	+23,2

NB: Annual rate not comparable with annual rates of subcomponents.

**Table 10 - Producer Price Index for imported commodities according to group (concluded)**  
**Base: 2000 = 100**

Origin/Group	weight	indices			% change between	
		Jul 2007	Jun 2008	Jul 2008	Jun 2008 and Jul 2008	Jul 2007 and Jul 2008
<b>2.11 Chemicals and chemical products</b>	10,65	145,6	162,9	163,8	+0,6	+12,5
<b>2.11.1 Basic Chemicals</b>	6,29	162,7	183,8	184,3	+0,3	+13,3
Basic organic chemicals	3,26	.	181,3	182,4	+0,6	..
Basic inorganic chemicals	0,88	.	121,4	121,4	0,0	..
Fertilisers and pesticides	0,82	169,1	209,9	209,9	0,0	+24,1
Other basic chemicals	1,33	162,2	185,9	185,6	-0,2	+14,4
<b>2.11.2 Compound chemical products</b>	4,36	128,9	142,3	143,6	+0,9	+11,4
Paints, vanishers and related products; artists' colours; ink	0,34	.	134,8	147,4	+9,3	..
Pharmaceutical products	0,89	136,4	136,3	136,3	0,0	-0,1
Soap, cleaning preparations, perfumes and toilet preparations	0,53	.	133,4	133,6	+0,1	..
Other compound chemical products	2,60	124,1	145,9	145,8	-0,1	+17,5
<b>2.12 Rubber and plastic products</b>	2,44	119,1	120,8	120,5	-0,2	+1,2
Rubber products	0,96	118,7	121,8	121,0	-0,7	+1,9
Plastic products	1,48	119,3	120,1	120,1	0,0	+0,7
<b>2.13 Non-metallic mineral products</b>	1,57	131,3	136,8	137,0	+0,1	+4,3
Glass and glass products	0,03	113,9	119,9	119,9	0,0	+5,3
Other non-metallic minerals products n.e.c.	1,54	138,8	145,6	145,8	+0,1	+5,0
<b>2.14 Basic Metals</b>	3,70	183,7	187,5	187,3	-0,1	+2,0
Basic iron and steel	0,77	161,5	160,2	161,2	+0,6	-0,2
Rolled, drawn and folded products	1,24	154,4	167,9	169,1	+0,7	+9,5
Other non-ferrous basic metals and articles	1,69	203,5	208,8	207,1	-0,8	+1,8
<b>2.15 Metal products</b>	2,06	131,8	137,0	137,2	+0,1	+4,1
Structural metal products and parts thereof	0,09	108,2	109,4	109,4	0,0	+1,1
Other fabricated metal products	1,97	133,9	139,4	139,6	+0,1	+4,3
<b>2.16 Non-electrical machinery and equipment</b>	14,01	129,4	134,8	135,2	+0,3	+4,5
General purpose machinery	7,98	138,7	146,2	146,9	+0,5	+5,9
Special purpose machinery	4,64	122,7	125,0	125,2	+0,2	+2,0
Domestic appliances and parts thereof	1,40	130,1	139,1	138,7	-0,3	+6,6
<b>2.17 Office, accounting and computing machinery</b>	5,42	75,1	74,7	74,8	+0,1	-0,4
<b>2.18 Electrical machinery and apparatus</b>	2,95	125,5	128,2	128,3	+0,1	+2,2
Electric motors, generators and transformers, and parts thereof	0,58	103,0	103,1	103,2	+0,1	+0,2
Electricity distribution and control apparatus, and parts thereof	0,75	129,4	129,3	129,3	0,0	-0,1
Insulated wire and cable; optical fibre cables	0,28	190,8	199,8	200,2	+0,2	+4,9
Other electrical machinery and apparatus	1,34	123,5	129,2	129,4	+0,2	+4,8
<b>2.19 Radio, television and communication equipments and parts thereof</b>	9,81	98,9	98,4	97,7	-0,7	-1,2
<b>2.20 Medical appliances, precision and optical instruments, watches and clocks</b>	3,34	120,4	122,8	123,4	+0,5	+2,5
Medical and surgical equipment and orthopaedic appliances	3,16	120,1	122,3	122,6	+0,2	+2,1
Watches and clocks, and parts thereof	0,18	121,8	131,8	135,0	+2,4	+10,8
<b>2.21 Transport</b>	13,45	142,7	145,0	145,0	0,0	+1,6
<b>2.21.1 Motor vehicles, parts and accessories thereof</b>	2,83	146,8	147,7	147,7	0,0	+0,6
Motor vehicles	2,73	102,8	102,2	102,2	0,0	-0,6
Parts and accessories for motor vehicles	0,11	155,7	158,6	158,6	0,0	+1,9
<b>2.21.2 Bodies (coachwork) for motor vehicles, trailers and semi-trailers; parts</b>	1,63	154,4	157,5	157,7	+0,1	+2,1
Trailers, semi-trailer and containers	0,70	.	116,7	116,7	0,0	..
Parts for motor vehicles bodies, trailers, semi-trailers and containers	0,93	.	157,7	158,1	+0,3	..
<b>2.21.3 Other transport equipment</b>	8,99	110,3	110,4	110,4	0,0	+0,1
<b>2.22 Furniture</b>	0,64	107,7	107,4	107,4	0,0	-0,3
<b>2.23 Other manufactures</b>	1,44	116,5	118,3	118,1	-0,2	+1,4

NB: Annual rate not comparable with annual rates of subcomponents.

**Table 11 - Producer Price Index for materials used in certain industries****Base 2000=100**

Industry	indices			% change between	
	Jul 2007	Jun 2008	Jul 2008	Jun 2008 and Jul 2008	Jul 2007 and Jul 2008
<b>Building and construction</b>	181,2	206,0	211,3	+2,5	+16,6
<b>Building industries</b>	183,7	204,4	207,9	+1,7	+13,1
<b>Civil engineering</b>	179,7	201,8	203,9	+1,0	+13,4
<b>Electrical engineering</b>	171,2	189,1	192,6	+1,8	+12,5
<b>Mechanical engineering</b>	166,3	191,4	194,1	+1,4	+16,7

Table 12 - Producer Price Index for selected materials

Base : 2000 = 100

Type of materials	indices			% change between		
	Jul 2007	Jun 2008	Jul 2008	Jun 2008 and Jul 2008	Jul 2007 and Jul 2008	
Aggregated crushed stone	218,7	244,6	244,6	0,0	+11,8	
Aluminium	Anodising	136,0	159,2	159,2	0,0	+17,0
	Basic forms	171,7	181,4	184,4	+1,6	+7,3
	Extruded products	218,8	256,7	253,4	-1,2	+15,8
	Sheeting	225,7	283,6	283,6	0,0	+25,6
Aluminium lever furniture	165,6	174,2	174,2	0,0	+5,1	
Angles, mild steel	181,4	262,2	262,2	0,0	+44,5	
Bead wire	117,7	172,2	190,7	+10,7	+62,0	
Bearings, ball and roller	173,2	223,2	225,2	+0,8	+30,0	
Billets, mild steel	214,6	273,8	273,8	0,0	+27,5	
Bitumen	242,9	366,4	390,5	+6,5	+60,7	
Bitumen and Acrylic Emulsion	153,1	192,3	206,2	+7,2	+34,6	
Boxes, corrugated cardboard	130,7	148,9	148,9	0,0	+13,9	
Bricks - Face	204,7	229,0	228,7	-0,1	+11,7	
Bricks - Stock	222,7	247,2	245,3	-0,7	+10,1	
Building boards	141,8	149,3	159,9	+7,0	+12,7	
Ceiling materials	193,6	203,4	203,4	0,0	+5,0	
Cement Retail price	194,3	203,2	204,8	+0,7	+5,4	
Cement building blocks	226,4	235,9	243,1	+3,0	+7,3	
Ceramic and encaustic wall and floor tiles and mosaics	111,9	112,2	112,2	0,0	+0,2	
Civil engineering plant	150,3	168,3	168,3	0,0	+11,9	
Coal, bituminous	178,3	275,3	274,4	-0,3	+53,8	
Coal, bituminous - for local sales		260,6	326,3	328,0	+0,5	+25,8
	Anthracite - for local sales Grade A	100,7	100,7	100,7	0,0	0,0
	Anthracite - for local sales Grade SP	100,9	100,9	100,9	0,0	0,0
	Cobbles, grade A	189,6	356,3	342,9	-3,7	+80,8
	Cobbles, grade B	152,6	286,5	275,7	-3,7	+80,6
	Large nuts, grade A	152,4	152,3	152,3	0,0	-0,0
	Large nuts, grade B	233,3	305,3	296,1	-3,0	+26,9
	Peas, grade A	308,7	426,8	465,7	+9,1	+50,8
	Peas, grade B	283,3	413,9	413,9	0,0	+46,0
	Small nuts, grade A	291,4	427,8	415,9	-2,7	+42,7
	Small nuts, grade B	354,7	427,5	427,5	0,0	+20,5
Coast						
	Petrol, 93 octane	269,4	443,7	428,6	-3,4	+59,0
Coated profiled GMS sheeting (roofing)		223,5	292,4	292,4	0,0	+30,8
Concrete pipes		146,5	160,0	160,0	0,0	+9,2
Concrete roof tiles		174,9	204,1	204,1	0,0	+16,6
Construction machinery (excluding trucks)		122,7	132,2	132,7	+0,3	+8,1
Containers, glass		154,3	157,9	157,5	-0,2	+2,0
Copper Piping		314,6	402,2	363,1	-9,7	+15,4
Copper, basic forms		341,0	422,1	411,3	-2,5	+20,6
Coumarone indene resin (imported)		145,7	145,7	149,7	+2,7	+2,7
Craft paper		137,5	137,7	158,1	+14,8	+14,9
Cylinder lock set		183,0	192,2	192,2	0,0	+5,0
Diesel at wholesale level	Coast	249,1	426,3	451,5	+5,9	+81,2
	Witwatersrand	252,4	428,5	453,5	+5,8	+79,6
Diesel oil	Coast and Witwatersrand	252,0	519,9	511,9	-1,5	103,1
	Retail Metropolitan and other urban areas	331,8	547,3	585,1	+6,9	+76,3
	Retail Metropolitan areas	261,0	433,7	464,7	+7,1	+78,0
Drainage		124,3	127,9	140,6	+9,9	+13,1
Drop in ceiling tiles-gypsum		149,7	149,7	149,7	0,0	0,0
Drop-in ceiling tiles - masonite		168,0	190,3	190,3	0,0	+13,2
Electrical contracting materials		191,7	202,8	206,4	+1,7	+7,6
Enamel paints		176,1	187,3	203,1	+8,4	+15,3
Extruded aluminium distributor level		185,0	181,3	183,5	+1,2	-0,8
Extruded aluminium section		218,8	257,1	253,8	-1,2	+15,9
Fibre cement roof sheet		177,7	197,8	197,8	0,0	+11,3
Fibrous insulation	Batten board	164,5	176,0	176,0	0,0	+6,9
	Ceiling insulation	134,7	141,7	141,7	0,0	+5,1
	Mattresses	166,2	182,0	182,0	0,0	+9,5
	Preformed pipe sections	149,3	162,8	162,8	0,0	+9,0

Type of materials	indices			% change between			
	Jul 2007	Jun 2008	Jul 2008	Jun 2008 and Jul 2008	Jul 2007 and Jul 2008		
Flush doors	223,9	260,6	260,6	0,0	+16,3		
Foam insulation materials	205,3	207,7	227,7	+9,6	+10,9		
		<b>Polyurethane</b>	205,3	207,7	227,7	+9,6	+10,9
Glass for the building industry cut to size	214,5	237,3	248,6	+4,7	+15,8		
Glass, for building industry	102,0	108,9	108,9	0,0	+6,7		
Gypsum board	170,3	170,3	170,3	0,0	0,0		
Hinges	150,6	166,2	166,2	0,0	+10,3		
Imported Meranti	102,8	122,2	122,2	0,0	+18,8		
Insulator, porcelain	151,2	172,0	197,8	+15,0	+30,8		
Ironmongery	137,4	156,1	157,8	+1,0	+14,8		
Joint Sealants	143,5	164,3	164,3	0,0	+14,4		
Leather, bovine hide	130,6	137,3	138,9	+1,1	+6,3		
Lever locks	173,4	176,9	176,9	0,0	+2,0		
Mining machinery	137,3	155,6	155,6	0,0	+13,3		
Modified Bitumen sheeting	152,4	210,4	222,0	+5,5	+45,6		
Natural stone, cut and sawn	120,5	128,9	130,3	+1,0	+8,1		
Ordinary and extended cement	228,4	236,2	246,5	+4,3	+7,9		
PVC Pipes	147,7	147,7	165,4	+11,9	+11,9		
Paints	170,8	186,2	198,3	+6,4	+16,1		
Paper, newsprint	165,4	165,4	224,0	+35,4	+35,4		
Partitioning materials	193,6	203,4	203,4	0,0	+5,0		
Petro-chemical building materials	163,8	197,5	204,7	+3,6	+24,9		
Plastic bottles	167,9	194,8	205,1	+5,2	+22,1		
Plastic, bulk forms	167,6	194,1	194,4	+0,1	+15,9		
Plate, mild steel	223,5	292,4	292,4	0,0	+30,8		
Plumbing	143,6	153,5	159,2	+3,7	+10,8		
Polybutadiene	210,7	243,0	278,6	+14,6	+32,2		
Processing oil	134,9	169,2	173,5	+2,5	+28,6		
Profiled aluminium roofing	186,4	208,8	213,3	+2,1	+14,4		
Profiled aluminium roofing - distributor level	164,9	180,5	193,2	+7,0	+17,1		
Reinforcing steel	227,4	404,6	418,8	+3,5	+84,1		
Resilient floor coverings	170,0	191,7	203,1	+5,9	+19,4		
Rubber crude	136,1	150,3	170,0	+13,1	+24,9		
		<b>Rubber crude Synthetic</b>	171,9	186,1	209,6	+12,6	+21,9
		<b>Rubber crude Synthetic Local</b>	171,9	186,1	209,6	+12,6	+21,9
Rubber industry's indices		<b>Carbon black - N660</b>	182,9	217,9	259,0	+18,8	+41,6
		<b>Carbon black - N774</b>	166,4	197,5	232,9	+17,9	+39,9
		<b>Natural rubber imported</b>	194,3	295,2	300,1	+1,6	+54,4
SA Pine, kiln dried	224,5	240,8	256,5	+6,5	+14,2		
Sand	140,6	146,0	147,0	+0,6	+4,5		
Self-Adhesive sheeting	146,9	149,5	149,5	0,0	+1,7		
Sementitious paints	184,6	190,4	190,4	0,0	+3,1		
Sheet, galvanized	223,5	292,4	299,5	+2,4	+34,0		
Sheet, uncoated	231,2	271,9	271,9	0,0	+17,6		
Small steel sections	116,0	172,8	172,8	0,0	+48,9		
Stainless steel products, flat rolled	273,4	219,4	225,0	+2,5	-17,7		
Steel tubes, pipes and fittings	129,0	131,0	131,0	0,0	+1,5		
Structural steel products	206,1	287,3	287,3	0,0	+39,3		
Structural steel, unworked	226,4	307,5	307,5	0,0	+35,8		
Sulphuric acid	121,8	190,6	190,6	0,0	+56,4		
Synthetic rubber	1502	210,0	238,1	273,7	+14,9	+30,3	
	1712	200,2	222,2	251,7	+13,2	+25,7	
Tar	201,8	251,4	237,5	-5,5	+17,6		
Tile adhesives	174,1	190,4	219,0	+15,0	+25,7		
Tinplate	162,0	179,8	179,8	0,0	+10,9		
Transformer oil	232,1	248,3	249,1	+0,3	+7,3		
Trucks	136,9	145,6	145,6	0,0	+6,3		
Trucks and buses	133,9	141,6	141,6	0,0	+5,7		
Tyres and tubes	184,2	199,3	210,6	+5,6	+14,3		
Vinyl sheeting flooring	155,5	164,8	164,8	0,0	+5,9		
Vinyl tiles flooring	170,4	173,9	173,9	0,0	+2,0		
Wash and basin	145,2	137,0	137,0	0,0	-5,6		
Water-closet system (WC's)	130,5	137,2	137,2	0,0	+5,1		
Waterproofing	165,2	181,4	196,3	+8,2	+18,8		
White glazed ceramic tiles	168,2	209,0	209,0	0,0	+24,2		

Type of materials		indices			% change between	
		Jul 2007	Jun 2008	Jul 2008	Jun 2008 and Jul 2008	Jul 2007 and Jul 2008
Witwatersrand	Petrol, 93 octane	269,4	443,7	428,6	-3,4	+59,0
Wood products, excluding mine wood		165,4	179,8	186,2	+3,5	+12,5
Wool, auction prices, 18 types		211,0	216,4	209,9	-3,0	-0,5
Woven needle punch carpeting		167,1	176,1	176,1	0,0	+5,3

## ADDITIONAL INFORMATION

### EXPLANATORY NOTES

- Introduction** 1 This publication contains results of monthly surveys of prices of locally produced commodities (including exports), imported and exported commodities. The price indices are calculated at base 2000=100.
- Scope of the PPI survey** 2 The indices are compiled on a gross industry basis, i.e. each index relates to those articles, which are produced, imported and exported by the designated industries of the South African economy. Selling prices are collected from manufacturers, importers and exporters.
- Classification** 3 The 1993 edition of the Standard Industrial Classification of all Economic Activities (SIC), Fifth edition, Report No. 09-90-02 was used to classify the industries in the survey. The SIC is based on the 1990 International Standard Industrial Classification of all Economic Activities (ISIC) with suitable adaptations for local conditions. The Central Product Classification (CPC) Version 1.1, Series M No 77 was used to classify the products in the survey.
- 4 This publication presents information, which measures changes in prices of products, which are produced, imported or exported by establishments.
- Statistical unit** 5 The statistical unit is the establishment (branch), which is the smallest economic unit that functions as a separate entity. Each statistical unit is classified to an industry according to the classification of the products that the unit manufactures, imports or exports.
- Survey methodology and design** 6 Different phases of sampling take place. Firstly, a sample of products, based on the information collected through the Large Sample Survey of 2005 and 2005 information on imports and exports received from SARS is designed and drawn. An indicator product is selected purposively within each product group. To be selected, a product should be part of the top 80% of products manufactured, imported or exported in that product group. Furthermore, it must be possible to obtain price quotations for the relevant product during the whole year. The sample of indicator products is revised every five years at which stage the weights of the indicator products/groups are also revised.
- This survey is collected by mail from an original sample of approximately 2 325 manufacturers, 2 325 exporters and 2 325 importers. The indices are based on producer prices at the point of Producer in the case of commodities produced in South Africa, and "ex-warehouse", in the case of imported commodities. Prices "delivered" or "free on rail" are accepted if this is the normal basis of quotation.
- Currently, an average of 13 000 price quotations are collected each month from approximately 2 700 outlets by means of 1 500 distinct questionnaires.
- Pricing basis** 7 Price information refers to the first seven days of the relevant month, except in the case of mining and most of the agricultural products, where it refers to the average price for the month. The average price of imported crude petroleum, used in the compilation of the import component of the PPI, is calculated as the value (in Rands) divided by the quantity of imported crude petroleum for the relevant month. **The prices of all items exclude Value Added Tax (VAT).**

**Weighting basis**

- 8 The index is a fixed weight index as the weights are determined in the base period and they do not change until the next base period. The commodities directly represented in the index, were selected on the basis of the values of sales of products –
- produced during 2005 for locally produced commodities;
  - exported during 2005; and
  - imported during 2005.

These commodities constitute approximately 80 per cent of the total value of Producer/imports/exports during the relevant year as indicated above. Weights were allocated to each product in accordance with the value of sales for each item during the 2004/05 financial year. The basis on which the weighting structure of each main PPI component, indicated in the tables published in this statistical release, was calculated, is indicated in table C.

**Table C– Basis on which the weighting structure of each PPI table is based**

<b>Number of table in this statistical release</b>	<b>PPI component</b>	<b>Basis for weighting structure</b>
Table 8	Domestic output of South African industry groups	Sales value of South African Producer (Weighted using the National Accounts value added weights)
Table 9	Exported commodities	Sales value of exported commodities
Table 10	Imported commodities	Sales value of imported commodities
Table 11	Materials used in certain industries	Value of materials used

**Processing of price information**

- 9 The prices that are quoted for the different products are checked. If the price difference between two successive periods is outside the specified range of increase (+5%) or decreases (-5%), the current price levels are confirmed with relevant respondents.

**Calculating product price indices**

- 10 Price relatives are calculated for each product per respondent by dividing the current prices by the previously quoted price. The price relative for each product is calculated by means of the geometric mean of the price relatives for each respondent. This price relative for each product is then applied to the product index for the previous month in order to obtain a product index for the relevant month.

**Calculating group price indices**

- 11 Group price indices are calculated by weighting product indices with the relevant product weight, according to each group's (local, import, export) weighting structure, using the Laspeyres index formula.

**Contributions of specific products to the total PPI**

- 12 The monthly (annual) contribution of a specific product or group of products to the total PPI is calculated by multiplying the weight of this product or group of products with the monthly (annual) change in the index for this product or group of products, divided by the index for 'All groups'.



- Price indices for diesel** 13 The price index for diesel (Coast and Witwatersrand) is based on the refinery prices of diesel.
- The retail price index for diesel (metropolitan and other urban areas) is based on retail prices obtained from a sample of 84 retail outlets throughout the country. The diesel indices for the different areas are weighted according to the diesel volume distribution as obtained from the South African Petroleum Industry Association (SAPIA).
- The retail price index for diesel (metropolitan areas) is based on retail prices obtained from a sample of only 48 outlets in the historical metropolitan areas of the CPI. The diesel indices for the different areas are weighted according to the diesel volume distribution in the relevant areas as obtained from the South African Petroleum Industry Association (SAPIA).
- The price index for diesel at wholesale level (coast and Witwatersrand) is based on the regulated wholesale prices of diesel.
- Reliability of estimates** 14 Inaccuracies may occur because of imperfections in reporting by establishment (branch) and errors made in collection and processing of the data. Inaccuracies of this kind are referred to as non-sampling errors. Every effort is made to reduce non-sampling errors to a minimum by careful designing the questionnaires, editing data and efficient operating procedures.
- Related publications** 15 Users may also wish to refer to the following publications, which are available from Stats SA -
- Bulletin of Statistics; and
  - SA Statistics.
- Unpublished statistics** 16 In some cases, Stats SA can also make available information, which is not published. This information can be made available in one or more of the following ways: computer printout, diskette or CD. Generally a fee is levied for providing unpublished information.
- Symbols and abbreviations** 17
- |          |                                    |
|----------|------------------------------------|
| Stats SA | Statistics South Africa            |
| ..       | not available                      |
| -        | nil or not applicable              |
| *        | revised since previous publication |
| avg      | average                            |

## GLOSSARY

**Annual percentage change**

The annual percentage change is the change in the index of the relevant month of the current year compared with the index of the same month in the previous year expressed as a percentage and is generally accepted as the yardstick of PPI inflation.

**Overall average annual percentage change**

The overall average annual percentage change is the change in the average index of one year compared with the average index of the previous year expressed as a percentage.

**Contribution of specific products to the total PPI**

The monthly (annual) contribution of a specific product or group of products to the total PPI is calculated by multiplying the weight of the index with the monthly annual change of the index divided by the index for "All Items".

**Establishment**

An establishment (branch) is the smallest economic unit that functions as a separate entity.

**Indicator products**

Indicator products are those products whose sale values represent 80% of the total value of sales (turnover) in an industrial subgroup.

**Monthly percentage change**

The monthly percentage change is the change in the index of the relevant month compared to the index of the previous month expressed as a percentage.

**Weights**

The weights are the relevant importance of the indicator products in that subgroup. The weight of a product is calculated by dividing the actual value of sales of the relevant indicator product by the total value of sales in that subgroup.

## FOR MORE INFORMATION

Stats SA publishes approximately 300 different releases each year. It is not economically viable to produce them in more than one of South Africa's eleven official languages. Since the releases are used extensively, not only locally but also by international economic and social-scientific communities, Stats SA releases are published in English only.

Stats SA has copyright on this publication. Users may apply the information as they wish, provided that they acknowledge Stats SA as the source of the basic data wherever they process, apply, utilise, publish or distribute the data; and also that they specify that the relevant application and analysis (where applicable) result from their own processing of data.

### Advance release calendar

An advance release calendar is disseminated on [www.statssa.gov.za](http://www.statssa.gov.za)

### Stats SA products

A complete set of Stats SA publications is available at the Stats SA Library and the following libraries -

National Library of South Africa, Pretoria Division  
National Library of South Africa, Cape Town Division  
Natal Society Library, Pietermaritzburg  
Library of Parliament, Cape Town  
Bloemfontein Public Library  
Johannesburg Public Library  
Eastern Cape Library Services, King William's Town  
Central Regional Library, Polokwane  
Central Reference Library, Nelspruit  
Central Reference Collection, Kimberley  
Central Reference Library, Mmabatho

Stats SA also provides a subscription service.

### Electronic services

A large range of data are available via on-line services, diskette and computer printouts. For more details about our electronic data services, contact (012) 310 8600/8390/8351/4892/8496/8095.

You can visit us on the Internet at: [www.statssa.gov.za](http://www.statssa.gov.za)

### Enquiries

Technical enquiries: Hlabi Morudu  
(012) 310 8377

For media enquiries contact:  
Mr T Oosterwyk, Manager, at (012) 310-8130 or 082-908-9104

Telephone number: (012) 310 6917/8137/8377 (survey area)  
(012) 310 8600/8390/8351/4892/8496/8095 (user information services)  
(012) 310 8161 (orders)  
(012) 310 8490 (library)

Fax number: (012) 321 3220/6

email: [ppi@statssa.gov.za](mailto:ppi@statssa.gov.za) (technical enquiries)  
[info@statssa.gov.za](mailto:info@statssa.gov.za) (user information services)  
[distribution@statssa.gov.za](mailto:distribution@statssa.gov.za) (orders)

Postal address: Private Bag X 44, Pretoria, 0001

**Produced by Stats SA**