

# Production Price Index (PPI)

July 2003

Co-operation between Statistics South Africa (Stats SA), the citizens of the country, the private sector and government institutions is essential for a successful statistical system. Without continued co-operation and goodwill, the timely release of relevant and reliable official statistics will not be possible.

Stats SA publishes approximately three hundred different releases each year. It is not economically viable to produce them in more than one of South Africa's eleven official languages. Since the releases are used extensively, not only locally, but also by international economic and social-scientific communities, Stats SA releases are published in English only.

This data in this statistical release adheres to the Special Data Dissemination Standard (SDDS) of the International Monetary Fund (IMF), which sets out standards on coverage, periodicity and timeliness of data; access by the public; integrity; and quality of the disseminated data.

**Embargo: 11:30**  
**Date: 27 August 2003**

**Production Price Index and rates of change according to main components**

**Base: 2000 = 100**

Production Price Index components	Indices			Percentage change between		
	Jul 2002	Jun 2003	Jul 2003	Jun 2003 and Jul 2003		Jul 2002 and Jul 2003
				Actual %	Seasonally adjusted %	Actual %
Commodities for consumption in South Africa	125,2	126,6	127,1	+ 0,4	+ 0,6	+ 1,5
Locally produced commodities	124,2	128,0	129,7	+ 1,3	+ 1,3	+ 4,4
Imported commodities	127,7	122,2	119,5	- 2,2	- 1,7	- 6,4
Output of South African industry						
Total output	123,3	125,3	126,4	+ 0,9	+ 1,0	+ 2,5
For South African consumption	124,2	128,0	129,7	+ 1,3	+ 1,3	+ 4,4

**FINDINGS AS AT JULY 2003**

The annual percentage change in the PPI is lower at 1,5% at July 2003 (i.e. the PPI at July 2003 compared with that at July 2002).

The Production Price Index (PPI) for all commodities for South African consumption shows an annual rate of increase at July 2003 (i.e. the PPI at July 2003 compared with that at July 2002). This rate is 0,8 of a percentage point lower than the corresponding annual rate of 2,3% at June 2003 (i.e. the PPI at June 2003 compared with that at June 2002) (cf. table 1, p.8). This lower annual rate at July 2003 compared with that at June 2003 could be explained by decreases in the production price indices for the following:

Foodstuffs, of which the rate decreased from + 11,4% at June 2003 to + 9,8% at July 2003.

Alcohol, paper, paper products and printing, of which the rate decreased from + 5,9% at June 2003 to + 3,4% at July 2003.

Transport equipment, of which the rate decreased from + 4,9% at June 2003 to + 3,5% at July 2003.

Chemicals and chemical products, of which the rate decreased from + 4,4% at June 2003 to + 1,6% at July 2003.

Electrical machinery and apparatus, of which the rate decreased from + 1,9% at June 2003 to + 1,7% at July 2003.

Non-electrical machinery and equipment, of which the rate decreased from + 1,3% at June 2003 to 0,0% at July 2003.

Mining and quarrying products, of which the rate decreased from - 3,5% at June 2003 to - 10,4% at July 2003.

However, these lower annual rates of increase were partially counteracted by higher annual rates of increase reflected at July 2003 (i.e. the specific indices at July 2003 compared with that at July 2002) in the inflation rates of the production price indices for the following:

Tobacco products, of which the rate increased from + 12,0% at June 2003 to + 17,5% at July 2003.

Electricity, of which the rate increased from + 7,6% at June 2003 to + 14,4% at July 2003.

Products of petroleum and coal, of which the rate increased from - 13,9% at June 2003 to - 8,5% at July 2003.

At June 2003 to July 2003 this index increased by 0,4% and the seasonally adjusted index increased by 0,6%.

The annual increase of 1,5% in the PPI for all commodities for South African consumption is due to an annual increase in the PPI for locally produced commodities (+ 3,2 percentage points), which was partially counteracted by an annual decrease in the PPI index for imported commodities (- 1,7 percentage points). The PPI for locally produced commodities contributed the same annual increase of 1,5% in the PPI for all commodities for South African consumption at July 2003 (+ 3,2 percentage points) as at June 2003 (+ 3,2 percentage points) and imported commodities contributed less at July 2003 (- 1,7 percentage points) than at June 2003 (- 0,9 of a percentage point) (cf. table 2, p.8).

The annual percentage change in the PPI for locally produced commodities for consumption in South Africa remained unchanged at 4,4% at July 2003 (i.e. the PPI at July 2003 compared with that at July 2002).

The annual rate of increase in the PPI for locally produced commodities for consumption in South Africa is 4,4% at July 2003 (i.e. the PPI at July 2003 compared with that at July 2002), which is the same as the corresponding annual rate of 4,4% at June 2003 (i.e. the PPI at June 2003 compared with that at June 2002) (cf. table 1, p.8). From June 2003 to July 2003 the index, as well as the seasonally adjusted index increased by 1,3%.

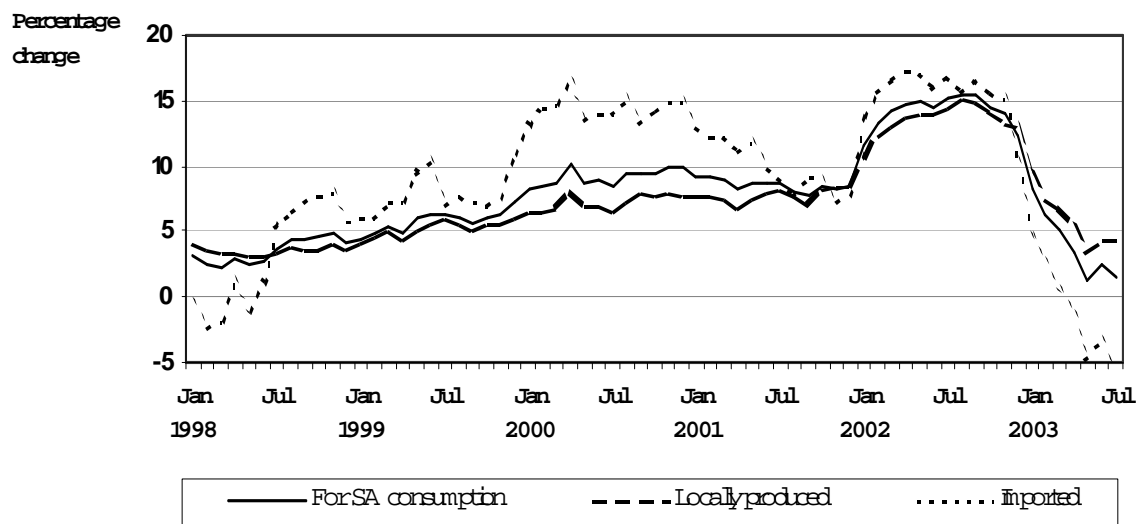
annual increase of 4,4% in the PPI for locally produced commodities for consumption in South Africa is due to relatively large increases in the price indices for electricity (+ 0,8 of a percentage point), transport equipment (+ 0,7 of a percentage point), paper products and printing (+ 0,5 of a percentage point), food at manufacturing (+ 0,4 of a percentage point), beverages (+ 0,4 of a percentage point), chemicals and chemical products (+ 0,4 of a percentage point), metal products (+ 0,4 of a percentage point), tobacco products (+ 0,3 of a percentage point) and non-metallic mineral products (+ 0,3 of a percentage point). These increases were counteracted by annual decreases in the price indices for products of petroleum and coal (- 0,3 of a percentage point), agricultural products (- 0,2 of a percentage point) and mining and quarrying products (- 0,1 of a percentage point) (cf. table 6, p.10).

Annual rate of change in the PPI for imported commodities is lower at - 6,4% at July 2003 (i.e. the PPI at July 2003 compared with that at July 2002)

PPI for imported commodities shows an annual rate of decrease of - 6,4% at July 2003 (i.e. the PPI at July 2003 compared with that at July 2002). This rate is 3,0 percentage points lower than the corresponding annual rate of - 3,4% at June 2003 (i.e. the PPI at June 2003 compared with that at June 2002) (cf. table 1, p. 8). From June 2003 to July 2003 it decreased by 2,2% and the seasonally adjusted index decreased by 1,7%.

Annual decrease of 6,4% in the PPI for imported commodities is due to relatively large annual decreases in the price indices for mining and quarrying (- 2,0 percentage points), office, accounting and computing machinery (- 0,8 of a percentage point), books (- 0,5 of a percentage point), food at manufacturing (- 0,4 of a percentage point), chemicals and chemical products (- 0,4 of a percentage point), non-electrical machinery and equipment (- 0,4 of a percentage point), radio, television, communication and apparatus (- 0,4 of a percentage point), transport equipment (- 0,4 of a percentage point), agricultural products (- 0,3 of a percentage point) and paper, paper products and printing (- 0,3 of a percentage point), while an annual increase occurred in the price index for beverages (+ 0,1 of a percentage point) (cf. table 8, p.11).

Figure 1 – Annual percentage change in the Production Price Index: Commodities for South African consumption



Source: StatsSA

### Contributions to monthly changes

#### For all commodities for South African consumption

Monthly increase of 0,4% in the PPI for all commodities for South African consumption is due to a monthly increase in the price index for locally produced commodities (+ 1,0 percentage point), which was partially counteracted by a monthly decrease in the price index for imported commodities (- 0,6 of a percentage point) (cf. table 3, p.8).

#### For locally produced commodities for consumption in South Africa

Monthly increase of 1,3% in the PPI for locally produced commodities for consumption in South Africa is due to monthly increases in the price indices for agricultural products (+ 0,5 of a percentage point), electricity (+ 0,4 of a percentage point), products of petroleum and coal (+ 0,2 of a percentage point), food at manufacturing (+ 0,1 of a percentage point), tobacco products (+ 0,1 of a percentage point) and paper, paper products and printing (+ 0,1 of a percentage point). These monthly increases were partially counteracted by a monthly decrease in the price index for chemicals and chemical products (- 0,1 of a percentage point) (cf. table 7, p.10).

monthly decrease of 2,2% in the PPI for imported commodities is due to monthly decreases in the price indices for mining and quarrying products (- 1,1 percentage points), transport equipment (- 0,4 of a percentage point), non-electrical machinery and equipment (- 0,3 of a percentage point), food at manufacturing (- 0,1 of a percentage point), chemicals and chemical products (- 0,1 of a percentage point) and office, accounting and computing machinery (- 0,1 of a percentage point) (cf. table 9, p.11).

#### **Monthly changes in the PPI for all commodities for South African consumption**

Relatively large monthly increases occurred in the price indices for gas, steam and water (+ 7,5%), electricity (+ 6,3%), tobacco (+ 5,0%), agricultural products (+ 4,9%), products of petroleum and coal (+ 4,5%), paper, paper products and printing (+ 0,9%), beverages (+ 0,5%) and food at manufacturing (+ 0,4%), while relatively large monthly decreases occurred in the price indices for mining and quarrying products (- 5,7%), office, accounting and computing machinery (- 1,9%), non-electrical machinery and equipment (- 1,1%), transport equipment (- 0,9%), leather and leather products (- 0,8%), chemicals and chemical products (- 0,8%), medical, precision and optical instruments (- 0,7%) and wood and wood products (- 0,4%) (cf. table 12 and 13).

#### **Monthly changes in the PPI for imported commodities**

Relatively large monthly decreases occurred in the price indices for mining and quarrying products (- 11,1%), food at manufacturing (- 2,4%), transport equipment (- 2,3%), office, accounting and computing machinery (- 1,9%), non-electrical machinery and equipment (- 1,6%), agricultural products (- 1,5%), chemicals and chemical products (- 1,0%), textiles and man-made fibres (- 0,8%), paper, paper products and printing (- 0,7%), non-metallic mineral products (- 0,7%), basic metals (- 0,7%), medical, precision and optical instruments (- 0,7%) and metal products (- 0,5%). These monthly decreases were partially offset by monthly increases in the price indices for wood and wood products (+ 0,5%), wearing apparel (+ 0,3%), other manufactures (+ 0,3%), beverages (+ 0,2%) and products of petroleum and coal (+ 0,1%) (cf. table 13, p.18 and 19).

#### **Monthly changes in the PPI for exported commodities**

From June 2003 to July 2003, the PPI for exported commodities decreased by 0,4%. Relatively large monthly decreases occurred in the price indices for exported agricultural products (- 9,3%), leather and leather products (- 8,7%), fishing products (- 7,7%), paper, paper products and printing (- 1,7%), chemicals and chemical products (- 1,6%), mining and quarrying products (- 1,6%) and food at manufacturing (- 0,3%), while monthly increases occurred in the price indices for exported products of petroleum and coal (+ 2,8%), rubber and plastic products (+ 1,8%), beverages (+ 1,6%), basic metals (+1,4%), footwear (+ 1,4%), wood and wood products (+ 0,6%) and non-metallic mineral products (+ 0,4%) (cf. table 14, p.20 and 21).

#### **Weighted retail price index for diesel**

From January 2002, when the new CPI basket was implemented based on the Survey of Income and Expenditure of Households conducted in October 2000, diesel was not included in the CPI basket as the weight thereof was too small. However, the retail price index for diesel was still included in the CPI release as it is used by the civil engineering, building and construction industry in their escalation formulas. This index is compiled by weighting the diesel indices for the areas according to the weights of the different areas based on the weight of the specific area in the total CPI.

The methodology for the retail price index for diesel, obtained through investigations and discussions with relevant stakeholders, led to the decision to weigh the retail price indices of the different areas according to weights based on the volume of diesel distributed in those areas as from July 2002 up to January 2003. The volume distribution is obtained from the South African Petroleum Industry Association (SAPIA).

As the retail price index for diesel is not based on CPI weights and does not contribute to the CPI, it is excluded as from the July 2002 CPI release. However, due to the application of this index in escalation formulas, it is now included with the other diesel price indices in the PPI release under Table 16 – Price indices for selected materials (cf. Explanatory note 13 on page 27).

**P J Lehohla**  
**Statistician General: Statistics South Africa**

es

: 1	Production Price Index (PPI) and the annual percentage change in the PPI on a monthly basis	8
: 2	Contributions to the annual percentage change in the PPI for all commodities for consumption in South Africa according to their origin	8
: 3	Contributions to the monthly percentage change in the PPI for all commodities for consumption in South Africa according to their origin	8
: 4	Contributions to the annual percentage change in the PPI for all commodities for consumption in South Africa according to group	9
: 5	Contributions to the monthly percentage change in the PPI for all commodities for consumption in South Africa according to group	9
: 6	Contributions to the annual percentage change in the PPI for locally produced commodities for South African consumption according to group .	10
: 7	Contributions to the monthly percentage change in the PPI for locally produced commodities for South African consumption according to group	10
: 8	Contributions to the annual percentage change in the PPI for imported commodities according to group	11
: 9	Contributions to the monthly percentage change in the PPI for imported commodities according to group	11
: 10	Production Price Index for consumption in South Africa and percentage change according to origin and group	12
: 11	Production Price Index for total output of South African industry groups and percentage change according to destination and group	14
: 12	Production Price Index for output of South African industry groups for South African consumption and percentage change according to group	16
: 13	Production Price Index for imported commodities and percentage change according to group	18
: 14	Production Price Index for exported commodities and percentage change according to group	20
: 15	Production Price Index and percentage change for materials used in certain industries	22
: 16	Production Price Index and percentage change for selected materials	22
: 17	Seasonally adjusted Production Price Index	24
	<b>tional information</b>	
	Explanatory notes	25
	Glossary	28
	<b>nore information</b>	29

ES

<b>coming</b>	<b>Issue</b>	<b>Expected date of publication</b>
s	August 2003	30 September 2003
	September 2003	29 October 2003
	October 2003	26 November 2003
	November 2003	18 December 2003
	December 2003	28 January 2003
	January 2004	25 February 2003

**ose of the**  
**y**

The Surveys of Prices of Locally Produced commodities (which are locally sold or exported) and Imported Commodities are monthly surveys covering samples of manufacturers, exporters and importers operating in the South African economy. The results of the survey are used to compile the Production Price Index (PPI), an economic indicator, which indicates the changes in production prices of locally produced commodities (which are locally sold or exported) and imported commodities. These statistics are used by the private sector in the analysis of comparative business and industry performance, as well as for contract price adjustments.

**ing the PPI**  
**1995=100 to**  
**=100**

Following international practice, the base year of the Production Price Index (PPI) has been changed from 1995 =100 to 2000 =100 with effect from February 2001. For more information see the statistical release P0142.4 for the historical figures.

**al Data**  
**mination**  
**lard (SDDS)**  
**ational**  
**etary Fund**  
**)**

South Africa's data dissemination practices are assessed against the IMF's Special Data Dissemination Standard (SDDS). A detailed description of the SDDS can be found on the IMF's Dissemination Standards Bulletin Board on the internet at <http://dsbb.imf.org>. This is a "best practice" standard. It covers four sectors of the economy i.e. the real, fiscal, financial and external sectors, as well as population and identifies four dimensions i.e. data, access, integrity and quality, of data dissemination. For each of these dimensions, the SDDS prescribes two to four monitorable elements or good practices that can be observed, or monitored, by users of statistics. However, the IMF's monitoring of the SDDS as authorised by the IMF's Board of Executive Directors is limited to the dimensions of data i.e. coverage, periodicity and timeliness, and access i.e. advanced release calendar. It should also be noted that the SDDS is a disclosure standard, i.e. it focuses on encouraging the authorities to provide information to users, including information that will enable users to assess the data.

The four institutions responsible for the compilation and dissemination of the SDDS prescribed data categories are National Treasury, the South African Revenue Services (SARS), the South African Reserve Bank (SARB) and Statistics South Africa (Stats SA).

National Treasury is responsible for compiling and disseminating data on the national budget (budgetary central government operations). SARS is responsible for compiling and disseminating of data on international merchandise trade.

The SARB is responsible for compiling and disseminating, the analytical accounts of the banking sector, the analytical accounts of the central bank, central government debt, interest rate, exchange rates, share price indices, balance of payments, the international investment position, international reserves and foreign currency liquidity.

Stats SA is responsible for compiling and disseminating data on the production index, national accounts, government accounts, industry – based statistics, social statistics, the production price index, consumer price index, labour market and population statistics.

South Africa has subscribed to the SDDS since 2 August 1996 and started posting its metadata on 27 September 1996. South Africa met the SDDS specifications for the coverage, periodicity and timeliness of the data, and for the dissemination of advanced release calendars on 18 September 2000. The National Summary Data Page has been hyperlinked since 24 April 1997 and the Data Template on International Reserves and Foreign Currency Liquidity was disseminated on 1 September 2000. South Africa is the only subscriber to the SDDS from the African continent.

**rvance of  
lards and  
s (ROSC) of  
nternational  
etary Fund  
)**

Codes (ROSC) as a step to strengthen the architecture of the international financial system. The objectives of the ROSC include the promotion of increased transparency and encouragement of implementation of internationally accepted standards and codes. One of the ROSC components is the data dissemination module, which falls under the responsibility of the IMF's Statistics Department (STA). In this module, a country is assessed according to the SDDS.

The data dissemination module of the ROSC provides a summary of South Africa's practices on the coverage, periodicity and timeliness of the data categories specified in the IMF's SDDS, and on the practices on the provision of advance release calendars for these categories. It is complemented by an assessment of the quality of the Production Price Index, using the Data Quality Assessment Framework (DQAF) developed by the IMF's Statistics Department.

The DQAF undertakes to assess data quality under the following dimensions -

- Prerequisites of quality;
- Integrity;
- Methodological soundness;
- Accuracy and reliability;
- Serviceability; and
- Accessibility

An IMF delegation visited South Africa from 7 to 18 May 2001 and produced a data ROSC for South Africa. This ROSC indicates to which extent South Africa has observed the IMF's requirements and is available at <http://www.imf.org/external/np/rosc/rosc.asp>.

**odological**

According to international best practice, the PPI is reweighted every five years. Stats SA reweighted the PPI as from June 1999 using a new basket of indicator products and their relevant weights.

The new baskets of indicator products manufactured and sold locally, exported and imported were compiled through various information sources. The information sources used to select the relevant indicator products in the different production industries are indicated in table A.

**Table A – Information sources used to select products in the different production industries**

Main products and industries	Sources
<b>Locally produced and sold items</b>	
Agriculture	Department of Agriculture
Fishing	Fishing Handbook, 1996
Forestry	Commercial Timber Resources and Roundwood Processing in South Africa, 1996
Mining and quarrying	Department of Minerals and Energy Affairs
Manufacturing	Stats SA, Census of Manufacturing, 1996
Electricity, gas and steam	Stats SA, Census of Electricity, Gas and Steam, 1995
Water	Department of Water Affairs and Forestry
<b>Imported items</b>	South African Revenue Services
<b>Exported items</b>	South African Revenue Services

The products were classified according to the relevant Standard Industrial Classification (SIC) subgroups. The products in each subgroup were then sorted according to their value of sales. The products contributing to the top 80% of the sales in each subgroup were selected as indicator products. These are the products for which prices will be monitored periodically by Stats SA.

The questionnaire(s) for each subgroup, which are used to collect the relevant price information from respondents, were adjusted to include the newly selected indicator products. Although the products on each questionnaire differ from the other questionnaires, their layout is identical.

For each indicator product a sample of manufacturers, importers and exporters was drawn from all the manufacturers, importers and exporters who manufacture, import or export the specific indicator product. The list of manufacturers, importers and exporters (sampling frame), from which the samples were drawn, are indicated in table B.

**Table B– Sampling frame**

<b>Main products and industries</b>	<b>Sources</b>
<b>Locally produced and sold products</b>	
Agriculture	List of fresh produce markets
Mining and quarrying	List of mines
Forestry	List obtained from Department of Agriculture Old sample of PPI
Fishing	Old sample of PPI List obtained from other sources
Manufacturing	List of manufacturers from the Census of Manufacturing, 1996 List of manufactures from trade unions
Electricity, gas and steam	List of producers according to the Census Of Electricity, Gas and Steam, 1995
Water	Old sample of PPI.
<b>Imported products</b>	List of importers obtained from South African Revenue Services
<b>Exported items</b>	List of exporters obtained from South African Revenue Services



Table 1 - The Production Price Index (PPI) and the annual percentage change in the PPI on a monthly basis

Base : 2000 = 100

Year		Jan.	Feb.	Mar.	Apr.	May	Jun.	Jul.	Aug.	Sep.	Oct.	Nov.	Dec.	Avg.
<b>Commodities for consumption in South African</b>														
2001	Index	104,8	105,2	105,5	106,6	107,3	108,1	108,7	109,4	109,5	111,1	112,2	112,9	108,4
	%	+9,3	+9,1	+8,9	+8,1	+8,6	+8,6	+8,6	+7,9	+7,8	+8,5	+8,2	+8,3	+8,4
2002	Index	116,9	119,1	120,4	122,4	123,3	123,7	125,2	126,2	126,4	127,3	127,8	126,9	123,8
	%	+11,5	+13,2	+14,1	+14,8	+14,9	+14,4	+15,2	+15,4	+15,4	+14,6	+13,9	+12,4	+14,2
2003	Index	126,4	126,5	126,5	126,5	124,8	126,6	127,1	..	..	..	..	..	..
	%	+8,1	+6,2	+5,1	+3,3	+1,2	+2,3	+1,5	..	..	..	..	..	..

**Locally produced commodities**

2001	Index	103,8	104,5	104,6	105,8	106,7	107,6	108,4	109,1	108,9	110,4	111,7	111,8	107,8
	%	+7,7	+7,7	+7,5	+6,9	+7,5	+7,9	+8,2	+7,8	+7,1	+8,1	+8,6	+8,4	+7,8
2002	Index	114,9	117,3	118,2	120,4	121,7	122,6	124,2	125,8	125,1	126,1	126,5	126,5	122,4
	%	+10,7	+12,2	+13,0	+13,8	+14,1	+13,9	+14,6	+15,3	+14,9	+14,2	+13,2	+13,1	+13,5
2003	Index	125,8	126,2	126,3	126,7	126,0	128,0	129,7	..	..	..	..	..	..
	%	+9,5	+7,6	+6,9	+5,2	+3,5	+4,4	+4,4	..	..	..	..	..	..

**Imported commodities**

2001	Index	107,2	106,9	107,9	108,5	108,8	109,1	109,3	110,0	110,9	112,6	113,5	115,6	110,0
	%	+13,1	+12,4	+12,3	+11,2	+11,8	+10,0	+9,2	+7,6	+9,2	+8,9	+7,4	+7,8	+10,0
2002	Index	122,0	123,6	125,9	127,4	127,4	126,5	127,7	127,2	129,4	130,2	130,8	127,5	127,1
	%	+13,8	+15,6	+16,7	+17,4	+17,1	+15,9	+16,8	+15,6	+16,7	+15,6	+15,2	+10,3	+15,5
2003	Index	127,6	126,8	126,5	125,6	121,3	122,2	119,5	..	..	..	..	..	..
	%	+4,6	+2,6	+0,5	-1,4	-4,8	-3,4	-6,4	..	..	..	..	..	..

Table 2 - Contributions to the annual percentage change in the PPI for all commodities for consumption in South Africa according to their origin

Origin of contribution	Contribution at June 2003	Contribution at July 2003
Locally produced commodities	+3,2	+3,2
Imported commodities	-0,9	-1,7
<b>Total groups</b>	<b>+2,3</b>	<b>+1,5</b>

Table 3 - Contributors to the monthly percentage change in the PPI for all commodities for consumption in South Africa according to their origin

Origin of contribution	Contribution at June 2003	Contribution at July 2003
Locally produced commodities	+1,2	+1,0
Imported commodities	+0,2	-0,6
<b>Total groups</b>	<b>+1,4</b>	<b>+0,4</b>

in South Africa according to group

Group	Contribution at June 2003	Contribution at July 2003
Agriculture	-0,2	-0,2
Mining and quarrying	-0,2	-0,6
Food at manufacturing	+0,2	+0,2
Beverages	+0,4	+0,3
Tobacco products	+0,1	+0,2
Textiles and made-up goods	+0,1	+0,1
Wearing apparel	+0,1	+0,1
Food and wood products	+0,1	+0,1
Paper, paper products and printing	+0,5	+0,3
Products of petroleum and coal	-0,4	-0,2
Chemicals and chemical products	+0,4	+0,1
Rubber and plastic products	+0,2	+0,2
Non-metallic mineral products	+0,2	+0,2
Basic metals	-0,1	-0,1
Metal products	+0,3	+0,3
Non-electrical machinery and equipment	+0,1	0,0
Office, accounting and computing machinery	-0,2	-0,2
Electrical machinery and apparatus	+0,1	0,0
Radio, TV, communication equipment and apparatus	-0,1	-0,1
Transport equipment	+0,5	+0,4
Electricity	+0,3	+0,6
All other groups	-0,1	-0,2
<b>All groups</b>	<b>+2,3</b>	<b>+1,5</b>

Table 5 - Contributions to the monthly percentage change in the PPI for all commodities for consumption in South Africa according to group

Group	Contribution at June 2003	Contribution at July 2003
Agriculture	-0,1	+0,4
Mining and quarrying	+0,3	-0,3
Paper, paper products and printing	0,0	+0,1
Products of petroleum and coal	-0,1	+0,1
Chemicals and chemical products	0,0	-0,1
Non-electrical machinery and equipment	0,0	-0,1
Transport equipment	0,0	-0,1
Electricity	+1,3	+0,3
All other groups	0,0	+0,1
<b>All groups</b>	<b>+1,4</b>	<b>+0,4</b>

Group	Contribution at June 2003	Contribution at July 2003
Agriculture	-0,3	-0,2
Mining and quarrying	-0,1	-0,1
Food at manufacturing	+0,4	+0,4
Beverages	+0,5	+0,4
Tobacco products	+0,2	+0,3
Textiles and made-up goods	+0,2	+0,2
Wearing apparel	+0,1	+0,1
Food and wood products	+0,2	+0,1
Textile, paper products and printing	+0,8	+0,5
Products of petroleum and coal	-0,6	-0,3
Chemicals and chemical products	+0,6	+0,4
Rubber and plastic products	+0,3	+0,2
Non-metallic mineral products	+0,3	+0,3
Metals products	+0,4	+0,4
Non-electrical machinery and equipment	+0,2	+0,2
Electrical machinery and apparatus	+0,1	+0,1
Transport equipment	+0,7	+0,7
Furniture	+0,1	+0,1
Other manufactures	0,0	0,0
Electricity	+0,4	+0,8
All other groups	-0,1	-0,2
<b>All groups</b>	<b>+4,4</b>	<b>+4,4</b>

Table 7 - Contributors to the monthly percentage change in the PPI for locally produced commodities according to group

Group	Contribution at June 2003	Contribution at July 2003
Agriculture	-0,2	+0,5
Food at manufacturing	0,0	+0,1
Tobacco products	0,0	+0,1
Textile, paper products and printing	0,0	+0,1
Products of petroleum and coal	-0,1	+0,2
Chemicals and chemical products	0,0	-0,1
Electricity	+1,8	+0,4
All other groups	+0,1	0,0
<b>All groups</b>	<b>+1,6</b>	<b>+1,3</b>

group

Group	Contribution at June 2003	Contribution at July 2003
Agriculture	-0,2	-0,3
Mining and quarrying	-0,5	-2,0
Food at manufacturing	-0,3	-0,4
Beverages	+0,1	+0,1
Textiles and made-up goods	0,0	-0,1
Rubber and leather products	-0,1	-0,1
Wood, paper products and printing	-0,2	-0,3
Chemicals and chemical products	-0,2	-0,4
Non-metallic mineral products	0,0	-0,1
Basic metals	-0,5	-0,5
Metals products	-0,1	-0,1
Non-electrical machinery and equipment	-0,1	-0,4
Office, accounting and computing machinery	-0,7	-0,8
Radio, TV, communication equipment and apparatus	-0,4	-0,4
Medical, precision and optical instruments	-0,1	-0,2
Transport equipment	0,0	-0,4
All other groups	-0,1	0,0
<b>All groups</b>	<b>-3,4</b>	<b>-6,4</b>

Table 9 - Contributors to the monthly percentage change in the PPI for imported commodities according to group

Group	Contribution at June 2003	Contribution at July 2003
Agriculture	-0,1	0,0
Mining and quarrying	+1,2	-1,1
Food at manufacturing	0,0	-0,1
Chemicals and chemical products	-0,1	-0,1
Basic metals	-0,1	0,0
Non-electrical machinery and equipment	-0,1	-0,3
Office, accounting and computing machinery	-0,2	-0,1
Transport equipment	+0,1	-0,4
All other groups	0,0	-0,1
<b>All groups</b>	<b>+0,7</b>	<b>-2,2</b>

Annex 10 - Production Price Index for consumption in South Africa according to origin and group

Base : 2000 = 100

Origin/Group	Weight	Indices			% change between	
		Jul 2002	Jun 2003	Jul 2003	Jun 2003 and Jul 2003	Jul 2002 and Jul 2003
groups	100,00	125,2	126,6	127,1	+0,4	+1,5
South African	73,00	124,2	128,0	129,7	+1,3	+4,4
Imported	27,00	127,7	122,2	119,5	-2,2	-6,4
Agriculture, Forestry, Fishing and Mining	15,22	130,6	123,3	124,0	+0,6	-5,1
1.1 Agriculture	7,68	137,6	127,8	134,0	+4,9	-2,6
1.1.1 Food	7,34	133,1	121,4	122,9	+1,2	-7,7
Grain	1,51	170,8	123,0	121,2	-1,5	-29,0
Sugar cane	0,38	136,5	141,5	141,1	-0,3	+3,4
Oil seeds	0,18	187,9	162,2	163,7	+0,9	-12,9
Vegetables and dried beans	0,68	127,8	154,5	145,8	-5,6	+14,1
Fruit	0,68	116,3	83,8	107,0	+27,7	-8,0
Meat	2,37	124,0	118,1	119,6	+1,3	-3,5
Milk and eggs	0,96	120,0	126,5	126,8	+0,2	+5,7
Other	0,58	94,2	100,9	100,9	0,0	+7,1
1.1.2 Other agriculture	0,34	195,3	210,1	277,2	+31,9	+41,9
1.2 Forestry	1,97	100,0	100,0	100,0	0,0	0,0
1.3 Fishing	0,12	137,5	136,6	136,4	-0,1	-0,8
1.4 Mining and quarrying	5,45	128,2	121,8	114,9	-5,7	-10,4
Coal	1,59	115,0	117,9	118,0	+0,1	+2,6
Metal ores	0,68	128,9	119,3	118,0	-1,1	-8,5
Other minerals	3,18	132,4	122,1	110,6	-9,4	-16,5
Manufacturing	80,28	124,2	126,8	126,8	0,0	+2,1
South African	56,60	123,5	129,1	129,8	+0,5	+5,1
Imported	23,68	126,2	121,7	120,2	-1,2	-4,8
2.1 Food	10,16	135,3	137,0	137,5	+0,4	+1,6
Meat	1,79	132,2	125,8	129,6	+3,0	-2,0
Fresh meat	1,43	134,6	125,4	130,4	+4,0	-3,1
Meat products	0,36	121,5	128,5	126,2	-1,8	+3,9
Fish and fish products	0,19	146,4	138,1	133,3	-3,5	-8,9
Fruit and vegetable products	0,47	120,5	131,1	131,3	+0,2	+9,0
Fats and oils	0,84	133,6	130,5	129,5	-0,8	-3,1
Milk products	1,31	129,3	145,0	145,0	0,0	+12,1
Grain mill products	1,82	153,4	144,0	145,2	+0,8	-5,3
Sugar	0,35	120,5	129,0	129,0	0,0	+7,1
Coffee and tea	0,23	124,5	131,2	130,5	-0,5	+4,8
Other	3,16	132,7	139,6	138,8	-0,6	+4,6
2.2 Beverages	3,26	117,4	128,3	128,9	+0,5	+9,8
Alcoholic	2,35	119,7	130,5	131,2	+0,5	+9,6
Non-alcoholic	0,91	111,3	122,4	122,8	+0,3	+10,3
2.3 Tobacco products	1,15	115,4	129,1	135,6	+5,0	+17,5
2.4 Textiles and made-up goods	2,39	117,0	121,6	121,4	-0,2	+3,8
Spinning, weaving and finishing of textiles	1,43	116,1	121,3	121,0	-0,2	+4,2
Other textiles	0,96	118,3	122,1	121,9	-0,2	+3,0
2.5 Wearing apparel	1,81	115,6	120,7	120,8	+0,1	+4,5
Knitted and crocheted fabrics and articles	0,42	118,1	125,5	125,6	+0,1	+6,4
Wearing apparel	1,39	114,7	119,2	119,2	0,0	+3,9
Men's and boys' clothing	0,56	115,6	120,8	120,8	0,0	+4,5
Women's and girls' clothing	0,78	113,0	116,4	116,4	0,0	+3,0
Other, including articles of fur	0,05	128,6	140,3	141,5	+0,9	+10,0
2.6 Leather and leather products	0,29	131,3	127,0	126,0	-0,8	-4,0
2.7 Footwear	0,69	121,2	123,1	122,7	-0,3	+1,2
2.8 Wood and wood products	1,26	122,0	130,0	129,5	-0,4	+6,1
Sawmilling and planing of wood	0,44	109,0	116,3	116,4	+0,1	+6,8
Products of wood, cork and plaiting materials	0,82	128,8	137,3	136,4	-0,7	+5,9
2.9 Paper, paper products and printing	8,13	127,9	131,0	132,2	+0,9	+3,4
Paper and paper products	3,21	130,3	135,9	136,1	+0,1	+4,5
Publishing and printing	4,92	126,2	127,9	129,7	+1,4	+2,8
2.10 Products of petroleum and coal	2,75	128,3	112,3	117,4	+4,5	-8,5
2.11 Chemicals and chemical products	8,39	127,9	131,1	130,0	-0,8	+1,6
Basic chemicals	3,54	135,3	134,8	132,4	-1,8	-2,1
Fertilizers	0,45	130,9	131,4	127,8	-2,7	-2,4
Other basic chemicals	3,09	136,5	135,5	133,3	-1,6	-2,3
Compounded chemical products	4,85	122,1	128,1	128,0	-0,1	+4,8
Pharmaceutical products	1,47	116,6	125,2	125,2	0,0	+7,4
Other compounded chemical products	3,38	124,5	129,2	129,1	-0,1	+3,7

2.10 - Production Price Index for consumption in South Africa according to origin and group (concluded)

Base : 2000 = 100

Origin/Group	Weight	Indices			% -change between	
		Jul 2002	Jun 2003	Jul 2003	Jun 2003 and Jul 2003	Jul 2002 and Jul 2003
2.12 Rubber and plastic products	2,71	117,7	124,4	124,8	+0,3	+6,0
Rubber products	0,85	123,5	133,8	133,6	-0,1	+8,2
Plastic products	1,86	115,0	120,1	120,7	+0,5	+5,0
2.13 Non-metallic mineral products	2,25	124,6	133,5	133,8	+0,2	+7,4
Glass and glass products	0,61	120,0	126,1	125,8	-0,2	+4,8
Other	1,64	125,9	135,9	136,4	+0,4	+8,3
2.14 Basic metals	3,97	123,0	119,4	119,5	+0,1	-2,8
Ferrous	1,82	119,2	132,5	133,0	+0,4	+11,6
Non-ferrous	2,15	126,1	108,4	108,2	-0,2	-14,2
2.15 Metal products	3,18	117,7	128,4	128,3	-0,1	+9,0
Structural metal products	1,00	114,0	134,2	134,2	0,0	+17,7
Other	2,18	119,5	125,9	125,7	-0,2	+5,2
2.16 Non-electrical machinery and equipment	6,72	121,3	122,6	121,3	-1,1	0,0
General purpose machinery	2,44	126,1	126,3	126,3	0,0	+0,2
Special purpose machinery	3,69	120,3	122,3	119,8	-2,0	-0,4
Household appliances	0,59	123,0	124,7	124,9	+0,2	+1,5
2.17 Office, accounting and computing machinery	1,41	115,2	98,5	96,6	-1,9	-16,1
2.18 Electrical machinery and apparatus	2,48	120,3	122,5	122,4	-0,1	+1,7
Electric motors, generators and transformers	0,34	114,4	116,1	116,2	+0,1	+1,6
Electricity distribution and control apparatus	0,75	118,5	123,5	123,5	0,0	+4,2
Insulated wire and cable	0,69	122,4	121,4	121,3	-0,1	-0,9
Other	0,70	122,1	124,7	124,3	-0,3	+1,8
2.19 Radio, television and communication equipment and apparatus	2,70	122,4	117,8	117,6	-0,2	-3,9
2.20 Medical, precision and optical instruments	1,18	124,3	120,4	119,6	-0,7	-3,8
Medical appliances and instruments for measuring, checking, testing and navigating	0,99	123,9	119,9	118,0	-1,6	-4,8
Other, including watches and clocks	0,19	126,0	121,8	127,2	+4,4	+1,0
2.21 Transport equipment	11,04	122,0	127,4	126,3	-0,9	+3,5
Motor vehicles, parts and accessories	10,50	122,3	128,4	127,3	-0,9	+4,1
Motor vehicles	5,43	116,6	124,4	124,4	0,0	+6,7
Bodies, trailers and semi-trailers	0,16	114,4	120,1	120,1	0,0	+5,0
Parts and accessories	4,91	128,3	132,5	130,0	-1,9	+1,3
Other transport equipment	0,54	116,3	109,0	108,7	-0,3	-6,5
2.22 Furniture	1,01	114,4	119,0	119,0	0,0	+4,0
2.23 Other manufactures	1,35	114,7	116,7	116,8	+0,1	+1,8
Electricity, Gas Steam and Water	4,50	122,3	130,4	138,7	+6,4	+13,4
3.1 Electricity	4,17	121,6	130,9	139,1	+6,3	+14,4
3.2 Gas, Steam and water	0,33	130,5	124,4	133,7	+7,5	+2,5

Annex 11 - Production Price Index for total output of South African industry groups according to destination and group

Base : 2000 = 100

Origin/Group	Weight	Indices			% change between	
		Jul 2002	Jun 2003	Jul 2003	Jun 2003 and Jul 2003	Jul 2002 and Jul 2003
groups	100,00	123,3	125,3	126,4	+0,9	+2,5
South African	75,88	124,2	128,0	129,7	+1,3	+4,4
Exported	24,12	120,7	116,8	116,3	-0,4	-3,6
Agriculture, Forestry, Fishing and Mining	19,69	127,2	119,5	121,1	+1,3	-4,8
1.1 Agriculture	8,55	136,5	126,7	131,3	+3,6	-3,8
1.1.1 Food	8,35	131,7	119,9	119,9	0,0	-9,0
Grain	1,70	178,8	134,5	125,6	-6,6	-29,8
Sugar cane	0,40	136,5	141,5	141,1	-0,3	+3,4
Oil seeds	0,18	187,9	162,2	163,7	+0,9	-12,9
Vegetables and dried beans	0,81	123,0	146,0	138,5	-5,1	+12,6
Fruit	1,20	99,2	72,6	87,2	+20,1	-12,1
Meat	2,48	123,8	117,7	119,2	+1,3	-3,7
Milk and eggs	1,00	120,1	126,6	127,0	+0,3	+5,7
Other	0,58	93,0	101,3	101,3	0,0	+8,9
1.1.2 Other agriculture	0,20	215,4	238,0	319,4	+34,2	+48,3
1.2 Forestry	2,06	100,0	100,0	100,0	0,0	0,0
1.3 Fishing	0,16	139,7	136,4	135,5	-0,7	-3,0
1.4 Mining and quarrying	8,92	123,8	116,3	115,6	-0,6	-6,6
Coal	3,22	134,4	120,6	120,3	-0,2	-10,5
Metal ores	3,64	118,6	116,4	115,3	-0,9	-2,8
Other minerals	2,06	116,2	109,6	108,6	-0,9	-6,5
Manufacturing	75,63	122,3	126,4	127,0	+0,5	+3,8
South African	58,83	123,5	129,1	129,8	+0,5	+5,1
Exported	16,80	118,6	117,6	117,9	+0,3	-0,6
2.1 Food	10,77	134,7	136,8	137,5	+0,5	+2,1
Meat	1,83	132,0	125,5	129,8	+3,4	-1,7
Fresh meat	1,34	134,6	124,8	130,3	+4,4	-3,2
Meat products	0,49	122,4	129,3	129,1	-0,2	+5,5
Fish and fish products	0,24	133,3	131,0	129,3	-1,3	-3,0
Fruit and vegetable products	0,77	117,5	122,9	123,1	+0,2	+4,8
Fats and oils	0,61	138,3	137,1	137,2	+0,1	-0,8
Milk products	1,35	129,3	145,2	145,1	-0,1	+12,2
Grain mill products	1,80	153,1	146,1	147,4	+0,9	-3,7
Sugar	0,70	143,8	134,1	133,8	-0,2	-7,0
Coffee and tea	0,24	124,7	131,6	131,1	-0,4	+5,1
Other	3,23	132,8	140,1	139,3	-0,6	+4,9
2.2 Beverages	3,58	117,2	126,4	127,2	+0,6	+8,5
Alcoholic	2,61	119,4	128,1	129,0	+0,7	+8,0
Non-alcoholic	0,97	111,0	121,8	122,2	+0,3	+10,1
2.3 Tobacco products	1,22	115,2	128,7	135,0	+4,9	+17,2
2.4 Textiles and made-up goods	2,26	120,9	127,9	127,9	0,0	+5,8
Spinning, weaving and finishing of textiles	1,37	124,8	132,8	132,8	0,0	+6,4
Other textiles	0,89	115,1	120,6	120,6	0,0	+4,8
2.5 Wearing apparel	1,83	115,5	120,5	120,5	0,0	+4,3
Knitted and crocheted fabrics and articles	0,38	119,1	128,3	128,3	0,0	+7,7
Wearing apparel	1,45	114,6	118,5	118,5	0,0	+3,4
Men's and boys' clothing	0,60	117,5	121,8	121,8	0,0	+3,7
Women's and girls' clothing	0,80	111,6	115,0	115,0	0,0	+3,0
Other, including articles of fur	0,05	123,3	134,0	134,0	0,0	+8,7
2.6 Leather and leather products	0,33	122,6	124,8	118,5	-5,0	-3,3
2.7 Footwear	0,55	121,3	123,6	123,4	-0,2	+1,7
2.8 Wood and wood products	1,20	127,2	135,8	135,4	-0,3	+6,4
Sawmilling and planing of wood	0,36	128,6	136,4	136,6	+0,1	+6,2
Products of wood, cork and plaiting materials	0,84	126,5	135,6	134,8	-0,6	+6,6
2.9 Paper, paper products and printing	8,36	125,5	128,7	129,8	+0,9	+3,4
Paper and paper products	3,60	124,9	129,0	129,0	0,0	+3,3
Publishing and printing	4,76	126,0	128,5	130,5	+1,6	+3,6
2.10 Products of petroleum and coal	3,27	132,0	112,4	117,6	+4,6	-10,9
2.11 Chemicals and chemical products	7,41	123,4	128,5	127,2	-1,0	+3,1
Basic chemicals	3,53	123,6	127,7	125,2	-2,0	+1,3
Fertilizers	0,59	123,4	122,3	119,1	-2,6	-3,5
Other basic chemicals	2,94	123,7	128,7	126,5	-1,7	+2,3
Compounded chemical products	3,88	123,1	129,0	128,8	-0,2	+4,6
Pharmaceutical products	0,88	119,0	127,0	127,2	+0,2	+6,9
Other compounded chemical products	3,00	124,3	129,6	129,2	-0,3	+3,9

11 - Production Price Index for total output of South African industry groups according to destination and group  
(concluded)

Base : 2000 = 100

Origin/Group	Weight	Indices			% -change between	
		Jul 2002	Jun 2003	Jul 2003	Jun 2003 and Jul 2003	Jul 2002 and Jul 2003
2.12 Rubber and plastic products	2,48	119,8	128,0	128,7	+0,5	+7,4
Rubber products	0,75	130,8	144,6	145,1	+0,3	+10,9
Plastic products	1,73	114,9	120,7	121,4	+0,6	+5,7
2.13 Non-metallic mineral products	2,11	122,5	133,9	134,5	+0,4	+9,8
Glass and glass products	0,56	118,7	126,6	126,6	0,0	+6,7
Other	1,55	123,4	136,1	136,9	+0,6	+10,9
2.14 Basic metals	8,68	120,2	120,3	121,5	+1,0	+1,1
Ferrous	4,04	122,5	131,9	133,4	+1,1	+8,9
Non-ferrous	4,64	118,3	110,3	111,3	+0,9	-5,9
2.15 Metal products	3,23	114,2	127,4	127,4	0,0	+11,6
Structural metal products	1,24	113,6	133,8	133,8	0,0	+17,8
Other	1,99	114,6	123,4	123,4	0,0	+7,7
2.16 Non-electrical machinery and equipment	3,57	115,1	122,9	122,9	0,0	+6,8
General purpose machinery	1,26	111,5	116,1	116,1	0,0	+4,1
Special purpose machinery	1,96	115,0	125,0	125,0	0,0	+8,7
Household appliances	0,35	115,6	121,5	121,5	0,0	+5,1
2.17 Office, accounting and computing machinery	0,14	101,0	100,6	100,6	0,0	-0,4
2.18 Electrical machinery and apparatus	1,90	121,2	124,2	124,2	0,0	+2,5
Electric motors, generators and transformers	0,19	130,0	134,1	134,1	0,0	+3,2
Electricity distribution and control apparatus	0,45	119,6	128,3	128,3	0,0	+7,3
Insulated wire and cable	0,69	120,5	119,0	119,0	0,0	-1,2
Other	0,57	120,4	123,8	123,8	0,0	+2,8
2.19 Radio, television and communication equipment and apparatus	1,34	130,8	132,9	132,9	0,0	+1,6
2.20 Medical, precision and optical instruments	0,32	121,6	125,2	124,9	-0,2	+2,7
Medical appliances and instruments for measuring, checking, testing and navigating	0,28	122,2	126,4	125,9	-0,4	+3,0
Other, including watches and clocks	0,04	117,9	116,9	118,4	+1,3	+0,4
2.21 Transport equipment	8,32	115,4	123,5	123,5	0,0	+7,0
Motor vehicles, parts and accessories	8,07	115,9	124,2	124,2	0,0	+7,2
Motor vehicles	5,31	117,0	125,6	125,6	0,0	+7,4
Bodies, trailers and semi-trailers	0,33	106,4	108,7	108,7	0,0	+2,2
Parts and accessories	2,43	114,6	123,1	123,1	0,0	+7,4
Other transport equipment	0,25	102,7	103,3	103,3	0,0	+0,6
2.22 Furniture	1,39	110,9	114,2	114,2	0,0	+3,0
2.23 Other manufactures	1,37	110,7	113,6	113,6	0,0	+2,6
Electricity, Gas Steam and Water	4,68	122,3	130,4	138,7	+6,4	+13,4
3.1 Electricity	4,35	121,6	130,9	139,1	+6,3	+14,4
3.2 Gas, Steam and water	0,33	130,5	124,4	133,7	+7,5	+2,5



a 12 - Production Price Index for output of South African industry groups for South African consumption according to group

Base : 2000 = 100

Origin/Group	Weight	Indices			% change between	
		Jul 2002	Jun 2003	Jul 2003	Jun 2003 and Jul 2003	Jul 2002 and Jul 2003
groups	100,00	124,2	128,0	129,7	+1,3	+4,4
South African	100,00	124,2	128,0	129,7	+1,3	+4,4
Exported	-	-	-	-	-	-
Agriculture, Forestry, Fishing and Mining	16,29	128,0	122,1	126,1	+3,3	-1,5
1.1 Agriculture	9,67	138,6	129,3	136,2	+5,3	-1,7
1.1.1 Food	9,44	133,6	122,1	123,8	+1,4	-7,3
Grain	1,59	182,3	125,7	123,9	-1,4	-32,0
Sugar cane	0,52	136,5	141,5	141,1	-0,3	+3,4
Oil seeds	0,24	187,9	162,2	163,7	+0,9	-12,9
Vegetables and dried beans	0,93	127,8	154,5	145,8	-5,6	+14,1
Fruit	0,91	115,6	82,6	106,5	+28,9	-7,9
Meat	3,23	124,1	118,2	119,7	+1,3	-3,5
Milk and eggs	1,32	120,0	126,5	126,8	+0,2	+5,7
Other	0,70	93,0	101,3	101,3	0,0	+8,9
1.1.2 Other agriculture	0,23	225,5	252,6	348,5	+38,0	+54,5
1.2 Forestry	2,67	100,0	100,0	100,0	0,0	0,0
1.3 Fishing	0,16	138,0	137,2	137,1	-0,1	-0,7
1.4 Mining and quarrying	3,79	119,3	117,9	117,6	-0,3	-1,4
Coal	2,09	115,7	118,7	118,8	+0,1	+2,7
Metal ores	0,88	130,2	120,2	118,8	-1,2	-8,8
Other minerals	0,82	117,7	114,2	113,8	-0,4	-3,3
Manufacturing	77,54	123,5	129,1	129,8	+0,5	+5,1
South African	77,54	123,5	129,1	129,8	+0,5	+5,1
Exported	-	-	-	-	-	-
2.1 Food	12,44	136,3	139,3	140,1	+0,6	+2,8
Meat	2,20	133,5	126,5	131,2	+3,7	-1,7
Fresh meat	1,85	135,7	125,6	131,2	+4,5	-3,3
Meat products	0,35	121,5	130,8	130,5	-0,2	+7,4
Fish and fish products	0,10	168,1	179,3	180,0	+0,4	+7,1
Fruit and vegetable products	0,57	120,2	131,7	131,8	+0,1	+9,7
Fats and oils	0,72	139,4	137,9	138,0	+0,1	-1,0
Milk products	1,72	129,9	146,3	146,2	-0,1	+12,5
Grain mill products	2,25	153,9	146,9	148,2	+0,9	-3,7
Sugar	0,48	120,4	128,9	128,9	0,0	+7,1
Coffee and tea	0,31	124,7	131,6	131,0	-0,5	+5,1
Other	4,09	133,4	140,7	139,9	-0,6	+4,9
2.2 Beverages	4,21	117,2	128,0	128,6	+0,5	+9,7
Alcoholic	2,98	119,6	130,2	131,0	+0,6	+9,5
Non-alcoholic	1,23	111,3	122,5	122,9	+0,3	+10,4
2.3 Tobacco products	1,55	115,3	129,1	135,6	+5,0	+17,6
2.4 Textiles and made-up goods	2,52	116,8	123,9	123,9	0,0	+6,1
Spinning, weaving and finishing of textiles	1,49	117,5	125,2	125,2	0,0	+6,6
Other textiles	1,03	115,7	121,7	121,7	0,0	+5,2
2.5 Wearing apparel	2,19	115,4	121,3	121,3	0,0	+5,1
Knitted and crocheted fabrics and articles	0,46	119,6	129,5	129,5	0,0	+8,3
Wearing apparel	1,73	114,6	119,4	119,4	0,0	+4,2
Men's and boys' clothing	0,67	116,7	122,6	122,6	0,0	+5,1
Women's and girls' clothing	1,00	112,2	115,8	115,8	0,0	+3,2
Other, including articles of fur	0,06	126,5	138,8	138,8	0,0	+9,7
2.6 Leather and leather products	0,21	123,3	126,6	124,9	-1,3	+1,3
2.7 Footwear	0,68	120,9	123,5	123,2	-0,2	+1,9
2.8 Wood and wood products	1,46	122,5	132,1	131,4	-0,5	+7,3
Sawmilling and planing of wood	0,46	111,7	122,5	122,6	+0,1	+9,8
Products of wood, cork and plaiting materials	1,00	127,6	136,6	135,6	-0,7	+6,3
2.9 Paper, paper products and printing	9,82	127,2	132,1	133,6	+1,1	+5,0
Paper and paper products	3,70	128,2	137,3	137,9	+0,4	+7,6
Publishing and printing	6,12	126,6	129,1	131,0	+1,5	+3,5
2.10 Products of petroleum and coal	3,29	131,4	113,0	118,9	+5,2	-9,5
2.11 Chemicals and chemical products	6,76	123,7	131,4	130,4	-0,8	+5,4
Basic chemicals	2,52	123,9	131,1	128,3	-2,1	+3,6
Fertilizers	0,49	127,8	127,8	122,8	-3,9	-3,9
Other basic chemicals	2,03	122,8	132,0	129,7	-1,7	+5,6
Compounded chemical products	4,24	123,3	131,3	131,5	+0,2	+6,7
Pharmaceutical products	1,05	118,5	127,5	127,8	+0,2	+7,8
Other compounded chemical products	3,19	124,9	132,5	132,6	+0,1	+6,2

a 12 - Production Price Index for output of South African industry groups for South African consumption according to group(concluded)

Base : 2000 = 100

Origin/Group	Weight	Indices			% -change between	
		Jul 2002	Jun 2003	Jul 2003	Jun 2003 and Jul 2003	Jul 2002 and Jul 2003
2.12 Rubber and plastic products	2,95	119,3	128,1	128,6	+0,4	+7,8
Rubber products	0,83	128,3	144,6	144,7	+0,1	+12,8
Plastic products	2,12	115,9	121,7	122,4	+0,6	+5,6
2.13 Non-metallic mineral products	2,50	123,6	135,7	136,3	+0,4	+10,3
Glass and glass products	0,66	119,2	127,8	127,8	0,0	+7,2
Other	1,84	124,9	138,2	139,0	+0,6	+11,3
2.14 Basic metals	4,20	122,4	123,3	123,6	+0,2	+1,0
Ferrous	1,90	119,0	139,3	140,0	+0,5	+17,6
Non-ferrous	2,30	125,5	110,4	110,5	+0,1	-12,0
2.15 Metal products	3,58	114,0	127,8	127,8	0,0	+12,1
Structural metal products	1,31	114,5	135,8	135,8	0,0	+18,6
Other	2,27	113,6	123,0	123,0	0,0	+8,3
2.16 Non-electrical machinery and equipment	2,94	114,0	120,8	120,8	0,0	+6,0
General purpose machinery	0,94	113,1	116,8	116,8	0,0	+3,3
Special purpose machinery	1,60	114,0	123,2	123,2	0,0	+8,1
Household appliances	0,40	116,6	121,9	121,9	0,0	+4,5
2.17 Office, accounting and computing machinery	0,02	112,1	107,9	107,9	0,0	-3,7
2.18 Electrical machinery and apparatus	2,15	122,4	125,7	125,7	0,0	+2,7
Electric motors, generators and transformers	0,20	131,0	135,6	135,6	0,0	+3,5
Electricity distribution and control apparatus	0,52	120,7	129,8	129,8	0,0	+7,5
Insulated wire and cable	0,86	120,1	118,9	118,9	0,0	-1,0
Other	0,57	123,8	128,3	128,3	0,0	+3,6
2.19 Radio, television and communication equipment and apparatus	1,58	133,9	135,9	135,9	0,0	+1,5
2.20 Medical, precision and optical instruments	0,25	116,2	118,7	118,4	-0,3	+1,9
Medical appliances and instruments for measuring, checking, testing and navigating	0,22	115,1	118,0	117,2	-0,7	+1,8
Other, including watches and clocks	0,03	125,3	124,2	127,8	+2,9	+2,0
2.21 Transport equipment	9,60	116,4	125,4	125,4	0,0	+7,7
Motor vehicles, parts and accessories	9,55	116,3	125,4	125,4	0,0	+7,8
Motor vehicles	6,62	118,0	127,1	127,1	0,0	+7,7
Bodies, trailers and semi-trailers	0,17	115,6	121,2	121,2	0,0	+4,8
Parts and accessories	2,76	112,5	121,5	121,5	0,0	+8,0
Other transport equipment	0,05	102,3	105,0	105,0	0,0	+2,6
2.22 Furniture	1,27	115,6	120,7	120,7	0,0	+4,4
2.23 Other manufactures	1,37	112,8	116,2	116,2	0,0	+3,0
Electricity, Gas Steam and Water	6,17	122,1	130,3	138,5	+6,3	+13,4
3.1 Electricity	5,72	121,6	130,9	139,1	+6,3	+14,4
3.2 Gas, Steam and water	0,45	130,5	124,4	133,7	+7,5	+2,5

13 - Production Price Index for imported commodities according to group

Base : 2000 = 100

Origin/Group	Weight	Indices			% change between	
		Jul 2002	Jun 2003	Jul 2003	Jun 2003 and Jul 2003	Jul 2002 and Jul 2003
groups	100,00	127,7	122,2	119,5	-2,2	-6,4
Agriculture, Forestry, Fishing and Mining	12,27	132,6	120,7	109,3	-9,4	-17,6
1.1 Agriculture	2,27	126,0	111,5	109,8	-1,5	-12,9
1.1.1 Food	1,66	127,3	112,5	110,6	-1,7	-13,1
Grain	1,30	132,7	114,2	112,3	-1,7	-15,4
Sugar cane	-	-	-	-	-	-
Oil seeds	-	-	-	-	-	-
Vegetables and dried beans	-	-	-	-	-	-
Fruit	0,06	134,5	129,8	117,5	-9,5	-12,6
Meat	0,05	104,2	104,2	104,2	0,0	0,0
Milk and eggs	-	-	-	-	-	-
Other	0,25	100,1	100,1	100,1	0,0	0,0
1.1.2 Other agriculture	0,61	123,2	109,0	107,9	-1,0	-12,4
1.2 Forestry	0,05	100,0	100,0	100,0	0,0	0,0
1.3 Fishing	0,01	107,1	101,6	101,6	0,0	-5,1
1.4 Mining and quarrying	9,94	133,9	122,5	108,9	-11,1	-18,7
Coal	0,26	100,3	100,5	100,5	0,0	+0,2
Metal ores	0,12	99,3	98,2	98,2	0,0	-1,1
Other minerals	9,56	134,8	123,0	108,9	-11,5	-19,2
Manufacturing	87,73	126,2	121,7	120,2	-1,2	-4,8
2.1 Food	3,96	128,9	119,7	116,8	-2,4	-9,4
Meat	0,67	124,1	123,2	118,4	-3,9	-4,6
Fresh meat	0,46	124,3	124,6	122,6	-1,6	-1,4
Meat products	0,21	124,0	120,5	109,4	-9,2	-11,8
Fish and fish products	0,44	132,4	112,5	104,4	-7,2	-21,1
Fruit and vegetable products	0,18	122,0	125,1	125,4	+0,2	+2,8
Fats and oils	1,16	125,0	119,3	116,4	-2,4	-6,9
Milk products	0,21	118,8	119,0	119,2	+0,2	+0,3
Grain mill products	0,65	145,7	115,0	114,4	-0,5	-21,5
Sugar	0,01	134,1	148,5	148,5	0,0	+10,7
Coffee and tea	0,03	117,0	117,3	115,2	-1,8	-1,5
Other	0,61	121,8	121,3	119,8	-1,2	-1,6
2.2 Beverages	0,66	119,1	131,7	131,9	+0,2	+10,7
Alcoholic	0,64	119,7	132,8	133,0	+0,2	+11,1
Non-alcoholic	0,02	103,3	103,0	103,0	0,0	-0,3
2.3 Tobacco products	0,04	116,8	116,8	116,8	0,0	0,0
2.4 Textiles and made-up goods	2,03	118,0	114,5	113,6	-0,8	-3,7
Spinning, weaving and finishing of textiles	1,28	112,0	109,1	108,1	-0,9	-3,5
Other textiles	0,75	128,1	123,6	122,8	-0,6	-4,1
2.5 Wearing apparel	0,78	115,7	115,2	115,6	+0,3	-0,1
Knitted and crocheted fabrics and articles	0,30	113,0	110,3	110,4	+0,1	-2,3
Wearing apparel	0,48	117,5	118,5	119,0	+0,4	+1,3
Men's and boys` clothing	0,24	106,3	106,7	106,7	0,0	+0,4
Women's and girls` clothing	0,20	127,1	127,1	127,1	0,0	0,0
Other, including articles of fur	0,04	134,4	143,5	149,6	+4,3	+11,3
2.6 Leather and leather products	0,51	140,5	127,7	127,3	-0,3	-9,4
2.7 Footwear	0,73	121,3	121,3	121,0	-0,2	-0,2
2.8 Wood and wood products	0,71	118,9	118,4	119,0	+0,5	+0,1
Sawmilling and planing of wood	0,38	100,0	95,8	96,0	+0,2	-4,0
Products of wood, cork and plaiting materials	0,33	139,2	142,8	143,7	+0,6	+3,2
2.9 Paper, paper products and printing	3,57	132,6	122,0	121,2	-0,7	-8,6
Paper and paper products	1,88	142,5	127,2	125,6	-1,3	-11,9
Publishing and printing	1,69	122,9	117,0	117,0	0,0	-4,8
2.10 Products of petroleum and coal	1,32	101,5	102,5	102,6	+0,1	+1,1
2.11 Chemicals and chemical products	12,81	133,8	130,7	129,4	-1,0	-3,3
Basic chemicals	6,30	148,0	139,1	137,1	-1,4	-7,4
Fertilizers	0,32	144,6	147,4	149,6	+1,5	+3,5
Other basic chemicals	5,98	148,1	138,6	136,3	-1,7	-8,0
Compounded chemical products	6,51	119,9	122,3	121,7	-0,5	+1,5
Pharmaceutical products	2,60	114,7	122,9	122,5	-0,3	+6,8
Other compounded chemical products	3,91	123,5	122,0	121,3	-0,6	-1,8

2.13 - Production Price Index for imported commodities according to group (concluded)

Base : 2000 = 100

Origin/Group	Weight	Indices			% -change between	
		Jul 2002	Jun 2003	Jul 2003	Jun 2003 and Jul 2003	Jul 2002 and Jul 2003
2.12 Rubber and plastic products	2,07	111,5	110,5	110,1	-0,4	-1,3
Rubber products	0,92	112,0	107,8	106,9	-0,8	-4,6
Plastic products	1,15	110,9	112,6	112,6	0,0	+1,5
2.13 Non-metallic mineral products	1,57	127,7	123,2	122,3	-0,7	-4,2
Glass and glass products	0,47	122,9	119,2	117,9	-1,1	-4,1
Other	1,10	129,8	125,0	124,3	-0,6	-4,2
2.14 Basic metals	3,35	124,2	105,7	105,0	-0,7	-15,5
Ferrous	1,60	119,8	110,6	110,4	-0,2	-7,8
Non-ferrous	1,75	128,0	100,8	99,6	-1,2	-22,2
2.15 Metal products	2,09	134,5	131,2	130,5	-0,5	-3,0
Structural metal products	0,18	105,5	103,3	102,8	-0,5	-2,6
Other	1,91	137,2	133,7	133,0	-0,5	-3,1
2.16 Non-electrical machinery and equipment	17,02	126,8	125,5	123,5	-1,6	-2,6
General purpose machinery	6,50	131,3	130,2	130,2	0,0	-0,8
Special purpose machinery	9,36	123,2	121,9	118,2	-3,0	-4,1
Household appliances	1,16	128,9	127,3	127,8	+0,4	-0,9
2.17 Office, accounting and computing machinery	5,18	115,3	98,4	96,5	-1,9	-16,3
2.18 Electrical machinery and apparatus	3,41	116,2	116,5	116,0	-0,4	-0,2
Electric motors, generators and transformers	0,73	101,7	101,4	101,4	0,0	-0,3
Electricity distribution and control apparatus	1,23	116,2	116,5	116,5	0,0	+0,3
Insulated wire and cable	0,22	148,2	149,7	148,6	-0,7	+0,3
Other	1,23	119,2	119,5	118,5	-0,8	-0,6
2.19 Radio, television and communication equipment and apparatus	5,73	114,1	104,6	104,2	-0,4	-8,7
2.20 Medical, precision and optical instruments	3,67	125,7	120,5	119,7	-0,7	-4,8
Medical appliances and instruments for measuring, checking, testing and navigating	3,05	125,7	120,4	118,2	-1,8	-6,0
Other, including watches and clocks	0,62	126,1	121,5	127,0	+4,5	+0,7
2.21 Transport equipment	14,93	130,4	129,6	126,6	-2,3	-2,9
Motor vehicles, parts and accessories	13,08	131,8	132,1	128,7	-2,6	-2,4
Motor vehicles	2,22	106,3	104,1	103,8	-0,3	-2,4
Bodies, trailers and semi-trailers	0,15	111,0	117,0	117,0	0,0	+5,4
Parts and accessories	10,71	136,6	137,3	133,2	-3,0	-2,5
Other transport equipment	1,85	117,5	109,5	109,1	-0,4	-7,1
2.22 Furniture	0,31	100,7	100,7	100,4	-0,3	-0,3
2.23 Other manufactures	1,28	120,1	118,0	118,3	+0,3	-1,5
Electricity, Gas Steam and Water	-	-	-	-	-	-
3.1 Electricity	-	-	-	-	-	-
3.2 Gas, Steam and water	-	-	-	-	-	-

Annex 14 - Production Price Index for exported commodities according to group

Base : 2000 = 100

Origin/Group	Weight	Indices			% change between	
		Jul 2002	Jun 2003	Jul 2003	Jun 2003 and Jul 2003	Jul 2002 and Jul 2003
groups	100,00	120,7	116,8	116,3	-0,4	-3,6
Agriculture, Forestry, Fishing and Mining	30,30	125,7	114,9	112,5	-2,1	-10,5
1.1 Agriculture	5,00	121,6	108,8	98,7	-9,3	-18,8
1.1.1 Food	4,89	118,5	104,8	93,5	-10,8	-21,1
Grain	2,03	169,4	155,8	129,5	-16,9	-23,6
Sugar cane	-	-	-	-	-	-
Oil seeds	-	-	-	-	-	-
Vegetables and dried beans	0,44	100,0	100,0	100,0	0,0	0,0
Fruit	2,08	69,1	53,3	54,1	+1,5	-21,7
Meat	0,11	93,0	69,4	69,2	-0,3	-25,6
Milk and eggs	0,01	110,7	128,6	139,3	+8,3	+25,8
Other	0,22	-	-	-	-	-
1.1.2 Other agriculture	0,11	162,1	161,7	168,9	+4,5	+4,2
1.2 Forestry	0,11	100,0	100,0	100,0	0,0	0,0
1.3 Fishing	0,18	144,0	134,1	130,9	-2,4	-9,1
1.4 Mining and quarrying	25,01	126,0	115,6	114,6	-0,9	-9,0
Coal	6,79	153,3	123,1	122,4	-0,6	-20,2
Metal ores	12,26	116,2	115,7	114,7	-0,9	-1,3
Other minerals	5,96	115,7	107,8	106,5	-1,2	-8,0
Manufacturing	69,70	118,6	117,6	117,9	+0,3	-0,6
2.1 Food	5,40	123,7	118,6	118,2	-0,3	-4,4
Meat	0,62	119,3	118,1	118,1	0,0	-1,0
Fresh meat	0,20	108,7	105,3	105,3	0,0	-3,1
Meat products	0,42	125,0	124,9	124,9	0,0	-0,1
Fish and fish products	0,69	117,1	108,5	105,7	-2,6	-9,7
Fruit and vegetable products	1,41	114,2	111,9	112,3	+0,4	-1,7
Fats and oils	0,24	128,0	130,4	130,0	-0,3	+1,6
Milk products	0,19	117,6	118,4	119,3	+0,8	+1,4
Grain mill products	0,36	129,1	122,8	122,8	0,0	-4,9
Sugar	1,38	180,1	142,3	141,7	-0,4	-21,3
Coffee and tea	0,03	120,4	127,1	129,1	+1,6	+7,2
Other	0,48	117,9	124,6	124,6	0,0	+5,7
2.2 Beverages	1,57	117,2	113,4	115,2	+1,6	-1,7
Alcoholic	1,44	118,7	114,5	116,4	+1,7	-1,9
Non-alcoholic	0,13	100,6	100,8	100,9	+0,1	+0,3
2.3 Tobacco products	0,16	112,9	113,1	113,1	0,0	+0,2
2.4 Textiles and made-up goods	1,38	145,3	152,2	152,2	0,0	+4,7
Spinning, weaving and finishing of textiles	0,96	160,4	169,6	169,6	0,0	+5,7
Other textiles	0,42	110,2	111,9	111,9	0,0	+1,5
2.5 Wearing apparel	0,65	115,5	111,8	111,8	0,0	-3,2
Knitted and crocheted fabrics and articles	0,13	114,8	116,1	116,1	0,0	+1,1
Wearing apparel	0,52	115,8	110,8	110,8	0,0	-4,3
Men's and boys' clothing	0,33	124,0	116,9	116,9	0,0	-5,7
Women's and girls' clothing	0,16	124,0	116,9	116,9	0,0	-5,7
Other, including articles of fur	0,03	101,2	101,4	101,4	0,0	+0,2
2.6 Leather and leather products	0,69	121,9	123,0	112,3	-8,7	-7,9
2.7 Footwear	0,12	127,7	124,6	126,2	+1,3	-1,2
2.8 Wood and wood products	0,84	153,1	156,5	157,5	+0,6	+2,9
Sawmilling and planing of wood	0,53	175,5	175,4	175,8	+0,2	+0,2
Products of wood, cork and plaiting materials	0,31	115,2	124,5	126,5	+1,6	+9,8
2.9 Paper, paper products and printing	3,70	111,5	100,1	98,4	-1,7	-11,7
Paper and paper products	3,24	113,0	99,4	97,2	-2,2	-14,0
Publishing and printing	0,46	102,3	105,7	108,0	+2,2	+5,6
2.10 Products of petroleum and coal	3,20	127,7	105,3	108,3	+2,8	-15,2
2.11 Chemicals and chemical products	9,41	122,8	121,9	119,9	-1,6	-2,4
Basic chemicals	6,68	122,7	123,2	121,2	-1,6	-1,2
Fertilizers	0,91	115,1	112,3	112,3	0,0	-2,4
Other basic chemicals	5,77	123,9	124,9	122,6	-1,8	-1,0
Compounded chemical products	2,73	122,4	118,4	116,1	-1,9	-5,1
Pharmaceutical products	0,36	125,8	124,5	123,4	-0,9	-1,9
Other compounded chemical products	2,37	122,3	117,8	115,4	-2,0	-5,6

2.14 - Production Price Index for exported commodities according to group (concluded)

Base : 2000 = 100

Origin/Group	Weight	Indices			% -change between	
		Jul 2002	Jun 2003	Jul 2003	Jun 2003 and Jul 2003	Jul 2002 and Jul 2003
2.12 Rubber and plastic products	1,02	124,9	128,0	130,3	+1,8	+4,3
Rubber products	0,51	144,4	145,1	148,1	+2,1	+2,6
Plastic products	0,51	104,4	110,2	111,6	+1,3	+6,9
2.13 Non-metallic mineral products	0,87	111,4	116,9	117,4	+0,4	+5,4
Glass and glass products	0,23	114,9	116,9	116,9	0,0	+1,7
Other	0,64	110,3	117,0	117,7	+0,6	+6,7
2.14 Basic metals	22,75	118,9	118,4	120,1	+1,4	+1,0
Ferrous	10,75	124,1	127,3	129,3	+1,6	+4,2
Non-ferrous	12,00	114,1	110,4	111,9	+1,4	-1,9
2.15 Metal products	2,09	115,8	125,5	125,5	0,0	+8,4
Structural metal products	1,02	109,2	124,7	124,7	0,0	+14,2
Other	1,07	121,3	125,5	125,5	0,0	+3,5
2.16 Non-electrical machinery and equipment	5,61	113,4	122,4	122,4	0,0	+7,9
General purpose machinery	2,25	109,6	115,5	115,5	0,0	+5,4
Special purpose machinery	3,09	116,5	128,0	128,0	0,0	+9,9
Household appliances	0,27	111,0	119,6	119,6	0,0	+7,7
2.17 Office, accounting and computing machinery	0,52	100,0	100,0	100,0	0,0	0,0
2.18 Electrical machinery and apparatus	1,13	113,8	114,2	114,2	0,0	+0,4
Electric motors, generators and transformers	0,17	126,2	128,6	128,6	0,0	+1,9
Electricity distribution and control apparatus	0,23	111,7	116,7	116,7	0,0	+4,5
Insulated wire and cable	0,15	124,8	118,2	118,2	0,0	-5,3
Other	0,58	108,3	108,2	108,2	0,0	-0,1
2.19 Radio, television and communication equipment and apparatus	0,64	105,7	108,1	108,1	0,0	+2,3
2.20 Medical, precision and optical instruments	0,54	129,8	134,8	134,8	0,0	+3,9
Medical appliances and instruments for measuring, checking, testing and navigating	0,46	133,3	139,3	139,4	+0,1	+4,6
Other, including watches and clocks	0,08	109,4	108,6	107,7	-0,8	-1,6
2.21 Transport equipment	4,26	109,4	111,4	111,4	0,0	+1,8
Motor vehicles, parts and accessories	3,40	111,1	113,5	113,5	0,0	+2,2
Motor vehicles	1,16	100,2	101,0	101,0	0,0	+0,8
Bodies, trailers and semi-trailers	0,86	100,4	100,6	100,6	0,0	+0,2
Parts and accessories	1,38	127,3	132,6	132,6	0,0	+4,2
Other transport equipment	0,86	103,0	103,2	103,2	0,0	+0,2
2.22 Furniture	1,78	99,9	99,3	99,3	0,0	-0,6
2.23 Other manufactures	1,37	104,1	105,2	105,2	0,0	+1,1
Electricity, Gas Steam and Water	-	-	-	-	-	-
3.1 Electricity	-	-	-	-	-	-
3.2 Gas, Steam and water	-	-	-	-	-	-

15 - Production Price Index for materials used in certain industries

Base : 2000 = 100

Industry	Indices			% -change between	
	Jul 2002	Jun 2003	Jul 2003	Jun 2003 and Jul 2003	Jul 2002 and Jul 2003
Building and construction	123,4	131,7	132,0	+0,2	+7,0
Building industries	121,8	131,9	132,2	+0,2	+8,5
Civil engineering	120,6	130,5	131,7	+0,9	+9,2
Mechanical engineering	120,0	126,3	125,2	-0,9	+4,3
Structural engineering	123,1	125,9	124,6	-1,0	+1,2

16 - Production Price Index for selected materials

Base : 2000 = 100

Type of materials	Indices			% -change between	
	Jul 2002	Jun 2003	Jul 2003	Jun 2003 and Jul 2003	Jul 2002 and Jul 2003
Al, auction prices, 18 types	176,8	171,4	171,2	-0,1	-3,2
Al, bituminous	115,4	118,2	118,3	+0,1	+2,5
Al, bituminous - for local sales	142,6	159,1	161,5	+1,5	+13,3
Cobbles, grade A	158,1	148,2	153,4	+3,5	-3,0
Cobbles, grade B	166,0	119,2	123,3	+3,4	-25,7
Large nuts, grade A	134,4	151,1	152,6	+1,0	+13,5
Large nuts, grade B	145,9	168,7	169,3	+0,4	+16,0
Small nuts, grade A	164,8	186,0	182,4	-1,9	+10,7
Small nuts, grade B	155,8	179,8	180,4	+0,3	+15,8
Peas, grade A	136,0	157,1	162,0	+3,1	+19,1
Peas, grade B	138,0	145,7	146,2	+0,3	+5,9
Paracite - for local sales					
Grade SP	100,9	100,9	100,9	0,0	0,0
Grade A	100,7	100,7	100,7	0,0	0,0
Paint products, excluding minewood	118,3	126,5	126,0	-0,4	+6,5
Pine, kiln dried	146,1	169,6	169,6	0,0	+16,1
Paper, newsprint	146,4	166,4	166,4	0,0	+13,7
Print paper	141,7	147,5	149,6	+1,4	+5,6
Reams, corrugated cardboard	127,5	129,5	127,4	-1,6	-0,1
Shear, bovine hide	162,2	138,1	138,1	0,0	-14,9
Solvent crude	114,9	117,6	118,3	+0,6	+3,0
Synthetic	129,6	134,9	136,5	+1,2	+5,3
Synthetic - Local	129,6	134,9	136,5	+1,2	+5,3
Seals and tubes	125,6	140,3	140,3	0,0	+11,7
Styptic bottles	133,3	133,3	136,7	+2,6	+2,6
Styptic, bulk forms	130,6	134,1	131,8	-1,7	+0,9
Sulphuric acid	114,2	121,4	121,4	0,0	+6,3
Woolen	132,8	141,0	141,7	+0,5	+6,7
Thermal insulation materials	128,3	136,6	136,6	0,0	+6,5
Polyurethane	128,3	136,6	136,6	0,0	+6,5
Thermo-chemical building materials	122,8	127,7	126,7	-0,8	+3,2
Waterproofing	130,6	139,0	138,3	-0,5	+5,9
Waterproofing floor coverings	140,9	149,5	149,4	-0,1	+6,0
Gasoline, 93 octane - Coast	126,0	105,3	117,5	+11,6	-6,7
Gasoline - Witwatersrand	126,0	105,3	117,5	+11,6	-6,7
Gasoline - Coast & Witwatersrand	128,1	97,5	108,0	+10,8	-15,7
Gasoline - Retail	144,2	170,8*	175,1	+ 2,5	+21,4
Transformer oil	154,0	181,2	179,6	-0,9	+16,6
Asphalt	130,1	137,6	137,6	0,0	+5,8
Modified Bitumen sheeting	120,6	125,3	125,3	0,0	+3,9
Asphalt and Acrylic Emulsion	120,6	127,3	129,2	+1,5	+7,1
	123,6	103,2	99,3	-3,8	-19,7
Bricks - Stock	120,9	140,4	140,8	+0,3	+16,5
Bricks - Face	122,1	136,2	136,6	+0,3	+11,9
Concrete building blocks	127,1	153,2	153,2	0,0	+20,5
Gravel	114,9	121,3	124,1	+2,3	+8,0
Regulated crushed stone	117,4	143,3	143,3	0,0	+22,1
Primary and extended cement	130,4	147,1	151,4	+2,9	+16,1
Granular stone, cut and sawn	108,2	109,9	110,2	+0,3	+1,8
Plaster, for building industry	143,9	127,3	125,9	-1,1	-12,5
Plasterboard	129,5	129,5	129,5	0,0	0,0
Plaster in ceiling tiles-gypsum	123,6	123,6	123,6	0,0	0,0
Plaster in ceiling tiles-masonite	132,7	149,0	149,0	0,0	+12,3
Profiled aluminium roofing	141,2	128,0	128,8	+0,6	-8,8
Profiled aluminium section	151,1	151,1	151,1	0,0	0,0

Revised

Selected indices

Diesel Price index for diesel

Base year: 2000=100

Year	Jan.	Feb.	Mar.	Apr.	May	Jun.
2003	184,3	182,9	187,6	193,4	187,6	170,8

Base : 2000 = 100

Type of materials	Indices			% -change between	
	Jul 2002	Jun 2003	Jul 2003	Jun 2003 and Jul 2003	Jul 2002 and Jul 2003
mongery	122,0	119,9	119,3	-0,5	-2,2
f-Adhesive sheeting	118,6	118,6	118,6	0,0	0,0
at Sealants	118,6	129,4	137,8	+6,5	+16,2
sh doors	117,9	138,7	138,7	0,0	+17,6
inage	115,4	125,0	125,4	+0,3	+8,7
ubing	109,3	115,3	115,7	+0,3	+5,9
amic and encaustic wall and floor tiles and mosaics	104,7	107,9	107,9	0,0	+3,1
ling materials	134,9	139,3	139,3	0,0	+3,3
itioning materials	134,9	139,3	139,3	0,0	+3,3
rous insulation - Preformed pipe sections	110,2	120,0	120,0	0,0	+8,9
- Batten board	120,4	130,3	130,3	0,0	+8,2
- Mattresses	119,1	129,7	129,7	0,0	+8,9
- Ceiling insulation	104,5	115,6	115,6	0,0	+10,6
lulator, porcelain	135,4	133,9	130,7	-2,4	-3,5
ainers, glass	118,8	132,5	132,5	0,0	+11,5
lets, mild steel	129,2	142,2	142,2	0,0	+10,1
les, mild steel	123,8	134,6	134,6	0,0	+8,7
ctural steel, unworked	146,7	121,2	121,2	0,0	-17,4
ctural steel products	129,2	147,3	147,3	0,0	+14,0
nfencing steel	135,0	155,6	155,6	0,0	+15,3
ce, mild steel	115,4	152,2	152,2	0,0	+31,9
et, uncoated	149,0	118,8	118,8	0,0	-20,3
et, galvanized	115,4	152,2	152,2	0,0	+31,9
plate	130,0	142,6	139,4	-2,2	+7,2
el tubes, pipes and fittings	107,9	108,0	108,0	0,0	+0,1
per, basic forms	132,1	121,3	125,1	+3,1	-5,3
inium - Anodising	105,3	113,7	113,7	0,0	+8,0
- Basic forms	130,7	106,4	106,4	0,0	-18,6
- Extruded products	128,4	121,9	120,7	-1,0	-6,0
- Sheetting	118,3	104,5	106,7	+2,1	-9,8
rings, ball and roller	153,3	154,2	153,8	-0,3	+0,3
rtical contracting materials	121,9	123,8	123,5	-0,2	+1,3
struction machinery (excluding trucks)	119,6	118,4	117,3	-0,9	-1,9
cks	133,9	140,6	140,6	0,0	+5,0
cks and buses	132,8	137,6	137,6	0,0	+3,6
il engineering plant	144,2	141,4	140,8	-0,4	-2,4
sel for the civil engineering industry	115,4	132,8*	133,7	+0,7	+15,9
ing machinery	109,1	114,1	114,1	0,0	+4,6
per industry's indices:					
atural rubber (imported)	89,9	110,7	111,8	+1,0	+24,4
arbon black - N774 (local)	100,0	111,3	110,3	-0,9	+10,3
- N660	100,0	111,3	110,2	-1,0	+10,2
amarone indene resin (imported)	145,7	144,0	144,0	0,0	-1,2
athetic rubber - 1502	148,6	155,1	155,8	+0,5	+4,8
- 1712	148,5	150,8	149,6	-0,8	+0,7
lybutadiene	161,3	164,9	165,2	+0,2	+2,4
rocessing oil	100,0	94,7	87,1	-8,0	-12,9
ad wire	100,0	94,0	96,7	+2,9	-3,3
ant (Retail price)	119,1	138,5	138,5	0,0	+16,3
lding boards	128,2	133,1	131,1	-1,5	+2,3
crete roof tiles	136,3	157,5	157,5	0,0	+15,6
re cement roof sheet	130,8	156,8	156,8	0,0	+19,9
sed profiled GMS sheeting (roofing)	113,7	152,2	152,2	0,0	+33,9
orted Meranti	100,0	80,8	81,4	+0,7	-18,6
yl tiles flooring	111,2	129,6	129,6	0,0	+16,5
yl sheeting (flooring)	111,6	118,3	118,3	0,0	+6,0
an needle punch carpeting	122,5	128,8	128,8	0,0	+5,1
ar locks	113,0	119,0	119,0	0,0	+5,3
ges	125,0	141,7	141,7	0,0	+13,4
inder lock set	147,5	156,1	156,1	0,0	+5,8
inium lever furniture	129,8	136,1	136,1	0,0	+4,9
ll steel sections	104,9	116,0	116,0	0,0	+10,6
inless steel products, flat rolled	119,8	135,3	134,9	-0,3	+12,6
ce glazed ceramic tiles	122,4	122,4	122,4	0,0	0,0
ae adhesives	134,5	142,6	142,6	0,0	+6,0
Pipes	117,6	119,1	124,9	+4,9	+6,2
crete pipes	120,8	129,3	129,3	0,0	+7,0
n and basin	105,8	114,6	114,6	0,0	+8,3
ar-closet system (WC`s)	103,0	108,3	108,3	0,0	+5,1
per Piping	134,2	129,2	129,2	0,0	-3,7
antitious paints	127,6	152,0	152,0	0,0	+19,1
nel paints	128,5	140,6	140,5	-0,1	+9,3

revised

sed indices

ae index for diesel for the civil engineering industry

Base year: 2000=100

Year	Jan.	Feb.	Mar.	Apr.	May	Jun.
2003	133,6	133,5	135,7	138,9	137,6	132,8



a 17 - Seasonally adjusted group and product indices of the Production Price Index

Description	Weights	Indices					
		Feb 2003	Mar 2003	Apr 2003	May 2003	Jun 2003	Jul 2003
Total commodities for consumption in South Africa	100,00	126,5	126,7	125,9	124,6	126,3	127,0
Locally produced commodities	73,00	126,4	126,8	126,4	125,6	127,6	129,2
Imported commodities	27,00	126,3	125,6	124,6	121,6	122,6	120,5
Output of South African industry							
Total output	100,00	124,9	125,2	124,3	123,4	125,1	126,3
For South African consumption	100,00	126,4	126,8	126,4	125,6	127,6	129,2
Agriculture, Forestry and Fishing	12,50	125,6	126,1	122,6	125,5	126,6	130,9
Tobacco and Beverages	5,76	121,6	122,3	124,5	126,2	127,3	129,2
Textiles, Clothing and Footwear	5,39	121,5	122,3	122,6	122,6	122,4	122,3
Machinery and Transport equipment	12,50	122,5	123,0	123,3	123,8	124,1	124,6
Mining, Electricity, Gas and Water	9,96	102,4	101,7	103,4	102,4	119,5	122,9
Basic metals and Metal products	7,78	124,6	124,8	124,2	123,9	125,0	126,1
Food	12,44	144,3	143,8	142,2	138,9	139,2	140,0
Total Manufacturing	77,54	129,5	130,2	130,0	128,6	129,0	129,6

## EXPLANATORY NOTES

- Introduction** 1 This publication contains results of the monthly Surveys of Prices of Locally Produced Commodities (which are locally sold or exported) and Imported Commodities. These indices for commodities are classified to designated industries of the South African economy. They are calculated on the base 2000=100.
- Scope of the survey** 2 The indices are compiled on a gross industry basis, i.e. each index relates to those articles, which are produced, imported and exported by the designated industries of the South African economy. Selling prices are collected from manufacturers, importers and Exporters.
- Classification** 3 The 1993 edition of the Standard Industrial Classification of all Economic Activities (SIC), Fifth edition, Report No. 09-90-02, was used to classify the statistical units in the survey. The SIC is based on the 1990 International Standard Industrial Classification of all Economic Activities (ISIC) with suitable adaptations for local conditions. Statistics in this publication are presented at SIC subdivision level.
- 4 This publication presents information which measures changes in prices of products, that are produced, imported or exported by establishments (branches). It excludes semi-processed products, which have been produced by the establishment within the manufacturing division and carried over to other establishments within the manufacturing division for further processing.
- Statistical** 5 The statistical unit is the establishment (branch), which is the smallest economic unit that functions as a separate entity. Each statistical unit is classified to an industry according to the classification of the products that the unit manufactures, imports or exports.
- Survey methodology design** 6 Different phases of sampling takes place. Firstly, a sample of products, based on the information collected through the Manufacturing census of 1996 and 1995/96 information on imports and exports received from Customs and Excise, SARS is designed and drawn. An indicator product is selected purposively within each product group. To be selected, a product should be part of the top 80% of products manufactured, imported or exported in that product group. Furthermore, it must be possible to obtain price quotations for the relevant product during the whole year. The sample of indicator products is revised every five years at which stage the weights of the indicator products/groups are also revised.
- This survey is collected by mail from a sample of approximately 3 500 manufacturers, 3 500 exporters and 3 500 importers. The indices are based on producer prices at the point of production in the case of commodities produced in South Africa, and wholesale prices “ex-warehouse”, in the case of imported commodities. Prices “delivered” or “free on rail” are accepted if this is the normal basis of quotation.
- Currently, an average of 20 000 price quotations are collected each month from approximately 5 500 outlets by means of 6 000 questionnaires. The indices are based on retail trade and service prices.
- Weighting basis** 7 Price information refers to the first seven days of the relevant month, except in the case of mining and most of the agricultural products, where it refers to the average price for the month. The average price of imported crude petroleum, used in the compilation of the import component of the PPI, is calculated as the value (in Rands) divided by the quantity of imported crude petroleum for the relevant month. **The prices of all items exclude Value Added Tax (VAT).**

**hting**      **8**      The index is a fixed weights index as the weights are determined in the base period and they do not change until the next base period. The commodities directly represented in the index were selected on the basis of the values of sales of products –

- produced during the 1995-96 financial year for locally produced commodities;
- exported during 1996; and
- imported during 1996.

These commodities constitute approximately 80 per cent of the total value of production/imports/exports during the relevant year as indicated above. Weights were allocated to each product in accordance with the value of sales for each item during the 1995/96 financial year. The basis on which the weighting structure of each main PPI component, indicated in the tables published in this statistical release, was calculated, is indicated in table C.

**Table C – Basis on which the weighting structure of each PPI table is based**

<b>Number of table in this statistical release</b>	<b>PPI component</b>	<b>Basis for weighting structure</b>
Table 10	Commodities for South African consumption	Sales value of South African production minus exports, plus imports
Table 11	Total output of South African industry groups	Sales value of South African production
Table 12	Output of South African industry groups for South African consumption	Sales value of South African production minus exports
Table 13	Imported commodities	Sales value of imported commodities
Table 14	Exported commodities	Sales value of exported commodities
Table 15	Materials used in certain industries	Value of materials used

**ssing of**      **9**      The prices that are quoted for the different products are checked. If the price difference between two successive periods are outside the specified range of increase (+10%) or decreases (-5%), the current price levels are confirmed with the relevant respondents through a telephone inquiry.

**lating**  
**ct price**  
**es**      **10**      Price relatives are calculated for each product per respondent by dividing the current prices by the previously quoted price. The price relative for each product is calculated by means of the geometric mean of the price relatives for each respondent. This price relative for each product is then applied to the product index for the previous month in order to obtain a product index for the relevant month.

**lating**  
**p price**  
**es**      **11**      Group price indices are calculated by weighting product indices with the relevant product weight, according to each group's (local, import, export) weighting structure, using the Laspeyres index formula.

**ributions**  
**pecific**  
**acts to the**  
**PPI**      **12**      The monthly (annual) contribution of a specific product or group of products to the total PPI is calculated by multiplying the weight of this product or group of products with the monthly (annual) change in the index for this product or group of products, divided by the index for 'All groups'.

<b>indices diesel</b>	<b>13</b>	<p>The price index for diesel (Coast and Witwatersrand) is based on the refinery prices of diesel.</p> <p>The retail price index for diesel is based on retail prices obtained from a sample of 84 retail outlets throughout the country. The diesel indices for the different areas are weighted according to the diesel volume distribution as obtained from the South African Petroleum Industry Association (SAPIA).</p> <p>The diesel for the civil engineering industry index is based on retail prices obtained from a sample of only 48 retail outlets in the historical metropolitan areas of the CPI. The diesel indices for the different areas are weighted according to the diesel volume distribution in the relevant areas as obtained from the South African Petroleum Industry Association (SAPIA).</p>										
<b>seasonal adjustment</b>	<b>14</b>	<p>Seasonal fluctuations in a time series are those fluctuations, which usually tend to occur at about the same time and with the same magnitude each year. This may be the result of climatic influences or other social and commercial habits (e.g. the price of bread, which was previously revised in October of each year). In the analysis of time series, Stats SA makes use of the X-11 technique, which was developed by the American Bureau of Census. The seasonally adjusted indices for the latest month are calculated with seasonal factors, which are based on a time series analysis of information up to and including the previous month. Thus these indices change every time that another month is added. In the past Stats SA did not revise the seasonal adjusted indices on a monthly basis, but revised the historical seasonally adjusted indices for a year, annually in January of each year. This methodology caused diversion between the annual changes in the seasonally adjusted and actual indices. After thorough investigations it was decided that the latest seasonally adjusted indices will be published every month. This means that the seasonally adjusted figures do not have a fixed base such as the figures of the time series for which seasonally adjustments were done. It also implies that the values of the seasonally adjusted indices are changing on a monthly basis.</p>										
<b>reliability of data</b>	<b>15</b>	<p>Inaccuracies may occur because of imperfections in reporting by enterprises and errors made in collection and processing of the data. Inaccuracies of this kind are referred to as non-sampling errors. Every effort is made to reduce non-sampling errors to a minimum by careful designing the questionnaires, editing data and efficient operating procedures.</p>										
<b>additional publications</b>	<b>16</b>	<p>Users may also wish to refer to the following publications, which are available from Stats SA -</p> <ul style="list-style-type: none"> <li>• Bulletin of Statistics; and</li> <li>• SA Statistics.</li> </ul>										
<b>unpublished statistics</b>	<b>17</b>	<p>In some cases, Stats SA can also make available information, which is not published. This information can be made available in one or more of the following ways: computer printout, diskette or CD. Generally a fee is levied for providing unpublished information.</p>										
<b>symbols and abbreviations</b>	<b>18</b>	<table border="0"> <tr> <td>Stats SA</td> <td>Statistics South Africa</td> </tr> <tr> <td>..</td> <td>not available</td> </tr> <tr> <td>-</td> <td>nil or not applicable</td> </tr> <tr> <td>*</td> <td>revised since previous publication</td> </tr> <tr> <td>avg</td> <td>average</td> </tr> </table>	Stats SA	Statistics South Africa	..	not available	-	nil or not applicable	*	revised since previous publication	avg	average
Stats SA	Statistics South Africa											
..	not available											
-	nil or not applicable											
*	revised since previous publication											
avg	average											

<b>Annual percentage change</b>	The annual percentage change is the change in the index of the relevant month of the current year compared with the index of the same month in the previous year expressed as a percentage and is generally accepted as the yardstick of PPI inflation.
<b>Average annual percentage change</b>	The average annual percentage change is the change in the average index of one year compared with the average index of the previous year expressed as a percentage.
<b>Contribution of specific products to total PPI</b>	The monthly (annual) contribution of a specific product or group of products to the total PPI is calculated by multiplying the weight of the index with the monthly (annual) change of the index divided by the index for "All Items".
<b>Establishment</b>	An establishment (branch) is the smallest economic unit that functions as a separate entity.
<b>Indicator products</b>	Indicator products are those products whose sale value represent 80% of the total value of sales (turnover) in an industrial subgroup.
<b>Monthly percentage change</b>	The monthly percentage change is the change in the index of the relevant month compared to the index of the previous month expressed as a percentage.
<b>Weights</b>	The weights are the relevant importance of the indicator products in that subgroup. The weight of a product is calculated by dividing the actual value of sales of the relevant indicator product by the total value of sales in that subgroup.

## **NOTE INFORMATION**

Stats SA publishes approximately 300 different releases each year. It is not economically viable to produce them in more than one of South Africa's eleven official languages. Since the releases are used extensively, not only locally but also by international economic and social-scientific communities, Stats SA releases are published in English only.

Stats SA has copyright on this publication. Users may apply the information as they wish, provided that they acknowledge Stats SA as the source of the basic data wherever they process, apply, utilise, publish or distribute the data: and also that they specify that the relevant application and analysis (where applicable) result from their own processing of data.

### **Advance release calendar**

An advance release calendar is disseminated on <http://www.statssa.gov.za>

### **Stats SA products**

A complete set of Stats SA publications is available at the Stats SA Library and the following libraries -

National Library of South Africa, Pretoria Division  
National Library of South Africa, Cape Town Division  
Natal Society Library, Pietermaritzburg  
Library of Parliament, Cape Town  
Bloemfontein Public Library  
Johannesburg Public Library  
Eastern Cape Library Services, King William's Town  
Central Regional Library, Polokwane  
Central Reference Library, Nelspruit  
Central Reference Collection, Kimberley  
Central Reference Library, Mmabatho

Stats SA also provides a subscription service.

### **Electronic services**

A large range of data are available via on-line services, diskette and computer printouts. For more details about our electronic data services, contact (012) 310 8600/8390/8351/4892/8496/8095.

You can visit us on the Internet at: <http://www.statssa.gov.za>

### **Enquiries**

Telephone number: (012) 310 8600/8390/8351/4892/8496/8095 (user enquiries)  
(012) 310 8421/170/077 (technical enquiries)  
(012) 310 8161 (publishing)  
(012) 310 8490 (library)

Fax number: (012) 328 3932

e-mail: [ppi@statssa.gov.za](mailto:ppi@statssa.gov.za)

Postal address: Private Bag x44, Pretoria, 0001

*Produced by Stats SA*