



**Statistics
South Africa**

Preferred supplier of quality statistics



Statistical release

P0142.1

PRODUCER PRICE INDEX (PPI)

January 2008

**Embargoed until:
6 March 2008
11:30**

Enquiries:

Dr. Hlabi Morudu
(012) 310 8377

Forthcoming issue:

February 2008

Expected release date

27 March 2008

Statistics South Africa • Mbalo-mbalo dza Afrika Tshipembe • Tinhlayo-tiko ta Afrika-Dzonga • Dipalopalo tsa Aforika Borwa • Ezezibalo zaseNingizimu Afrika
Dipalopalo tša Afrika Borwa • Dipalopalo tsa Afrika Borwa • Ubalo lwaseMzantsi Afrika • Telubalo eNingizimu Afrika • iNanimbalo leSewula Afrika • Statistiek Suid-Afrika

email: info@statssa.gov.za
www.statssa.gov.za

170 Andries Street • Private Bag X44, 0001 Pretoria, South Africa
Tel: +27(12) 310 8911, Fax: +27(12) 321 7381

KEY FIGURES AS AT JANUARY 2008

Producer Price Index and rates of change according to main components

Base: 2000 = 100

Producer Price Index components	indices			Percentage change between	
	Jan 2007	Dec 2007	Jan 2008	Dec 2007 and Jan 2008	Jan 2007 and Jan 2008
Domestic output	149,3	163,3	164,9	+1,0	+10,4
Exported commodities	148,7	160,1	160,9	+0,5	+8,2
Imported commodities	137,6	151,3	154,5	+2,1	+12,3

KEY FINDINGS AS AT JANUARY 2008

The annual percentage change in the PPI is higher at +10,4% at January 2008 (i.e. the PPI at January 2008 compared with that at January 2007).

The Producer Price Index (PPI) for domestic output shows an annual rate of change of 10,4% at January 2008 (i.e. the PPI at January 2008 compared with that at January 2007)). This rate is 0,9 of a percentage point higher than the corresponding annual rate of 9,5% at December 2007 (i.e. the PPI at December 2007 compared with that at December 2006) (see table 1A, p.10). This high annual rate at January 2008 compared with that at December 2007 could be explained by increases in the annual rates of change in the Producer Price Indices for:

- *Agricultural products, of which the rate increased from + 22,8% at December 2007 to + 24,6% at January 2008.*
- *Mining and quarrying, of which the rate increased from +9,4% at December 2007 to +11,8% at January 2008.*
- *Food at manufacturing, of which the rate increased from + 17,6% at December 2007 to +18,7% at January 2008.*
- *Beverages, of which the rate increased from +6,2% at December 2007 to +6,6% at January 2008.*
- *Products of petroleum and coal, of which the rate increased from + 30,1% at December 2007 to + 33,6% at January 2008.*
- *Chemicals and chemical products, of which the rate increased from +5,9% at December 2007 to +8,5% at January 2008.*
- *Rubber and plastic products, of which the rate increased from +8,3% at December 2007 to +10,7% at January 2008.*
- *Electricity, of which the rate increased from + 4,4% at December 2007 to + 7,4% at January 2008.*

These increases were partially counteracted by a decrease in the annual rate of change for:

- *Basic metals, of which the rate decreased from + 1,0% at December 2007 to - 0,4% at January 2008.*

From December 2007 to January 2008 the PPI for domestic output increased by 1,0%.

The monthly increase of 1,0% in the PPI for domestic output is mainly due to relatively large monthly increases in the price indices for mining and quarrying products (+ 0,3 of a percentage point), chemicals and chemical products (+ 0,2 of a percentage point), paper and paper products (+ 0,2 of a percentage point), rubber and plastic products (+ 0,1 of a percentage point) and electricity (+ 0,1 of a percentage point). These increases were slightly counteracted by a decrease in the price index for basic metal (- 0,1 of a percentage point) (see table 3, p.11).

The annual rate of change in the PPI for exported commodities is higher at +8.2% at January 2008 (i.e. the PPI at January 2008 compared with that at January 2007).

The PPI for exported commodities shows an annual rate of increase of 8,2% at January 2008 (i.e. the PPI at January 2008 compared with that at January 2007). This rate is 0,3 of a percentage point higher than the corresponding annual rate of 7,9% at December 2007 (i.e. the PPI at December 2007 compared with that at December 2006) (see table 1B, p.10).

The annual increase of 8,2% in the PPI for exported commodities is mainly due to relatively large annual increases in the price indices of products of petroleum and coal (+ 1,8 of a percentage point), agricultural products (+ 0,6 of a percentage point), food at manufacturing (+ 0,4 of a percentage point), paper and paper products (+ 0,2 of a percentage point), chemicals and chemical products (+ 0,2 of a percentage point), metal products (+ 0,2 of a percentage point), and textile and made up goods (+ 0,1 of a percentage point) (see table 4, p.12).

From December 2007 to January 2008 the PPI for exported commodities increased by 0,5%.

The monthly increase of 0,5% in the PPI for exported commodities is mainly due to relatively large monthly increases in the price indices for mining and quarrying products (+ 0,6 of a percentage point), chemicals and chemical products (+ 0,1 of a percentage point), food at manufacturing (+ 0,1 of a percentage point) and paper and paper products (+ 0,1 of a percentage point). These increases were slightly counteracted by a decrease in the price index of basic metals (- 0,5 of a percentage point) (see table 5, p.12).

The annual rate of change in the PPI for imported commodities is higher at +12,3% at January 2008 (i.e. the PPI at January 2008 compared with that at January 2007).

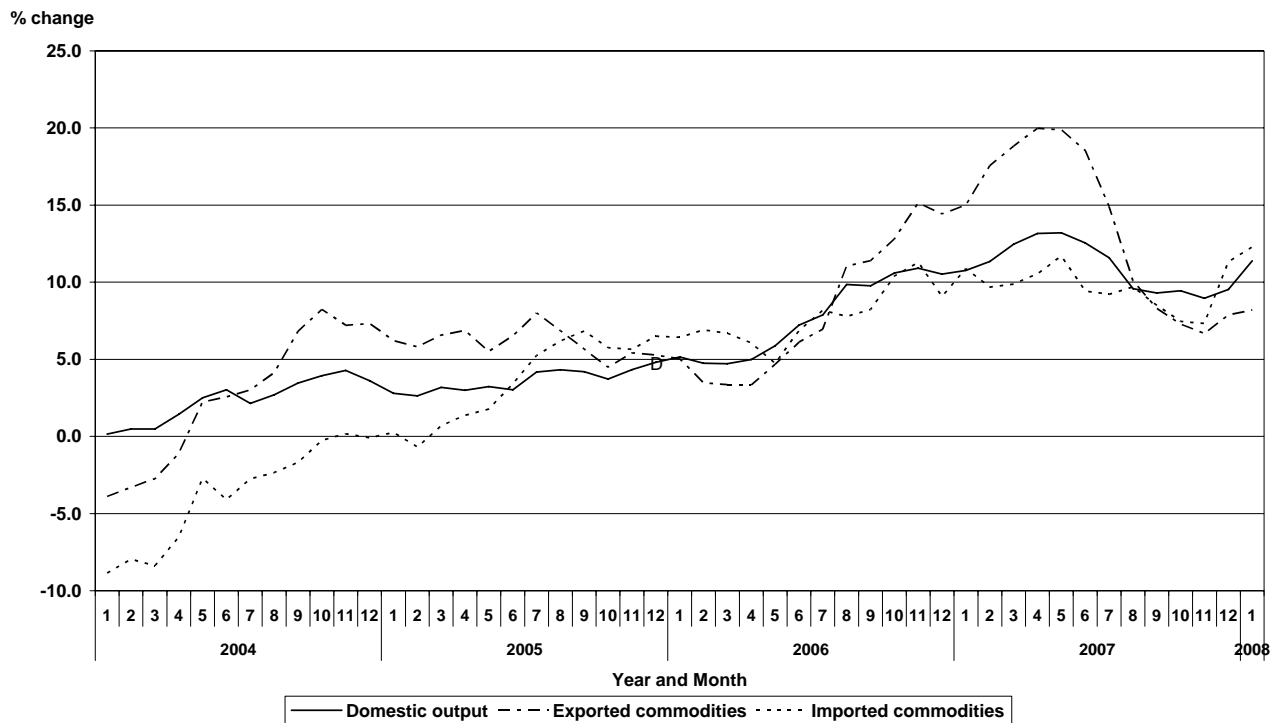
The PPI for imported commodities shows an annual rate of increase of 12,3% at January 2008 (i.e. the PPI at January 2008 compared with that at January 2007). This rate is 1,0 percentage point higher than the corresponding annual rate of 11,3% at December 2007 (i.e. the PPI at December 2007 compared with that at December 2006) (see table 1C, p.10).

The annual increase of 12,3% in the PPI for imported commodities is mainly due to relatively large annual increases in the price indices for mining and quarrying products (+ 6,4 percentage points), chemicals and chemical products (+ 1,9 percentage points), food at manufacturing (+ 1,1 percentage points), agricultural products (+ 0,9 of a percentage point), non-electrical machinery and equipment (+ 0,7 of a percentage point), basic metals (+ 0,5 of a percentage point), transport equipment (+0,3 of a percentage point) and products of petroleum and coal (+ 0,3 of a percentage point). These increases were slightly counteracted by price indices of office accounting and computing machinery (- 0,1 of a percentage point) and radio, television and communication equipment (- 0,1 of a percentage point) (see table 6, p.13).

From December 2007 to January 2008 the PPI for imported commodities increased by 2,1%.

The monthly increase of 2,1% in the PPI for imported commodities is mainly due to relatively large monthly increases in the price indices for mining and quarrying products (+ 0,8 of a percentage point), chemicals and chemical products (+ 0,8 of a percentage point), food at manufacturing (+ 0,2 of a percentage point) and agricultural products (+ 0,2 of a percentage point). These increases were slightly counteracted by a decrease in the price index of office, accounting and computing machinery (- 0,1 of a percentage point) (see table 7, p.13).

Figure 1 – Annual percentage change in the Producer Price Index:



Source: Stats SA

Note on the January 2008 Producer Price Index (PPI)

In February 2008 Statistics South Africa (Stats SA) announced important changes in the publication of the Producer Price Index (PPI). These changes included the use of value added at higher grouping levels and updated information to derive new PPI weights, and a discontinuation of the old “headline” PPI in favour of an index based on prices of South African output regardless of whether that output was sold at home or exported. The latter was previously published as Table 11 in the old PPI publication, and is now published as Table 8. The corresponding All groups index is provided monthly from January 2006 in this publication (see Table 1A), and the full series is available on the Stats SA website: www.statssa.gov.za. These changes are explained in detail in the document *Note on updating of South Africa’s producer price index*, available on Stats SA’s home page.

This publication (the January 2008 PPI) provides the new PPI weights and reflects the new structure. However, to link the indices based on the new weights to the indices based on the old weights, the new index must be adjusted to the old in one month. **This linking took place in January 2008. Consequently, in the linking month of January 2008 the index numbers (i.e. those published in this document) remain consistent with the old weights. The impact of the new weights will come into full effect only in February 2008.**

P J Lehohla
Statistician General: Statistics South Africa

CONTENTS

Page

KEY FIGURES AS AT JANUARY 2008 1

Figure 1 – Annual percentage change in the Producer Price Index..... 3

NOTES.....5

Table 1 - The Producer Price Index (PPI) and the annual percentage change in the PPI on a monthly basis 10

Table 2 - Contributions to the annual percentage change in the PPI for domestic output of South African industry groups 11

Table 3 - Contributions to the monthly percentage change in the PPI for domestic output of South African industry groups 11

Table 4 - Contributions to the annual percentage change in the PPI for exported commodities according to group..... 12

Table 5 - Contributions to the monthly percentage change in the PPI for exported commodities according to group..... 12

Table 6 - Contributions to the annual percentage change in the PPI for imported commodities according to group..... 13

Table 7 - Contributions to the monthly percentage change in the PPI for imported commodities according to group..... 13

Table 8 - Producer Price Index for domestic output of South African industry groups 14

Table 9 - Producer Price Index for exported commodities according to group..... 16

Table 10 - Producer Price Index for imported commodities according to group..... 18

Table 11 - Producer Price Index for materials used in certain industries 20

Table 12 - Producer Price Index for selected materials 22

ADDITIONAL INFORMATION 24

EXPLANATORY NOTES..... 24

GLOSSARY 27

FOR MORE INFORMATION 28

NOTES

Forthcoming issues	Issue	Expected date of publication
	February 2008	27 March 2008
	March 2008	24 April 2008
	April 2008	29 May 2008
	May 2008	26 June 2008
	June 2008	31 July 2008
	July 2008	28 August 2008
	August 2008	25 September 2008
Purpose of the survey	The surveys of prices of commodities in domestic output (including exports), imported commodities, and exported commodities are monthly surveys covering samples of manufacturers, importers and exporters in the South African economy. The results of the survey are used to compile the Producer Price Index (PPI) which indicates changes in Producer prices of locally produced commodities (including exports), imports and exports. These statistics are used by the private sector for contract price adjustments, and as a deflator in the compilation of national accounts.	
Rebasing	The base year of the Producer Price Index (PPI) is still 2000 = 100. For historical rebasing see the statistical release P0142.4.	
Special Data Dissemination Standard (SDDS) of the International Monetary Fund (IMF)	<p>South Africa's data dissemination practices are assessed against the IMF's Special Data Dissemination Standard (SDDS). A detailed description of the SDDS can be found on the IMF's Dissemination Standards Bulletin Board on the internet at http://dsbb.imf.org. The SDDS prescribes two to four monitorable elements or good practice that can be observed, or monitored, by users of statistics. These include coverage, periodicity and timeliness, and access to a scheduled release calendar. The SDDS in essence sets standards for the disclosure and transparency of statistics.</p> <p>South Africa subscribed to the SDDS in 2 August 1996 and posted its metadata as of 27 September 1996. South Africa has met the SDDS specifications for the coverage, periodicity and timeliness of the data, and for the dissemination of advanced release calendars since 18 September 2000.</p> <p>Stats SA is responsible for compiling and disseminating data on the Producer index, national accounts, government accounts, industry-based statistics, social statistics, the producer price index, consumer price index, labour market and population statistics.</p>	
Reports on Observance of Standards and Codes (ROSC) of the International Monetary Fund (IMF)	<p>The IMF has worked on producing ROSC as a step to strengthen the international financial system. The objectives of ROSC include the promotion of increased transparency, and the implementation of internationally accepted standards and codes.</p> <p>The data dissemination module of the ROSC provides a summary of South Africa's practices on the coverage, periodicity and timeliness of the data categories specified in the IMF's SDDS, and on the practices on the provision of advance release calendars for the data. The ROSC is complemented by an assessment of the quality of the Producer Price Index, using the Data Quality Assessment Framework (DQAF) as developed by the IMF's Statistics Department.</p> <p>The DQAF assess data quality in terms of -</p> <ul style="list-style-type: none"> • Prerequisites of quality; • Integrity; • Methodological soundness; • Accuracy and reliability; • Serviceability; and • Accessibility <p>For South Africa's compliance and performance on the quality of data see http://www.imf.org/external/np/rosc/rosc.asp.</p>	

Methodological notes Stats SA released a new re-weighted PPI in January 2008 using a revived basket of indicator products.

The new basket of indicator products for locally produced commodities, import and export commodities was compiled through use of several information sources. The information sources used to select relevant indicator products in the different industries are indicated in table A.

Table A – Information sources used to select products in different producer industries

Main products and industries	Sources
Locally produced items	
Agriculture	Stats SA, Census of Agriculture, 2005
Fishing	Fishing Industry Handbook, 2005
Forestry	Commercial Timber Resources and
	Roundwood Processing in South Africa, 2005
Mining and quarrying	Department of Minerals and Energy
Manufacturing	Stats SA, Large Sample Survey, 2005
Electricity	Stats SA, Department of Minerals and Energy
Gas	Stats SA, Economic Activity Survey, 2005
Water	Department of Water Affairs and Forestry
Imported items	South African Revenue Services
Exported items	South African Revenue Services

The products were classified according to the relevant Central Product Classification (CPC) and at industry level were classified using Standard Industrial Classification (SIC) subgroups. At industry level, value added was used to determine industry weights. At product level, the products in each subgroup were sorted according to their value of sales. The products contributing to the top 80% of the sales in each subgroup were selected as indicator products. These are the products for which prices will be monitored periodically by Stats SA.

The questionnaire(s) for each subgroup, which are used to collect the relevant price information from respondents, were adjusted to include the newly selected indicator products. Although the products on each questionnaire differ from the other questionnaires, their layout is identical.

For each indicator product a sample of manufacturers, importers and exporters was drawn from all the manufacturers, importers and exporters who manufacture, import or export the specific indicator product. The list of manufacturers, importers and exporters (sampling frame), from which the samples were drawn, are indicated in table B.

Table B – Sampling frame

Main products and industries	Sources
Locally produced and sold products	
Agriculture	List of fresh produce markets
Mining and quarrying	List of mines
Forestry	List obtained from Department of Water Affairs and Forestry Old sample of PPI
Fishing	Old sample of PPI List obtained from other sources
Manufacturing	List of manufacturers from Stats SA, Large Sample Survey, 2005 List of manufactures from Stats SA, Business Register List of producers from industry associations
Electricity and gas	List of producers according to Stats SA, Economic Activity Survey
Water	Old sample of PPI List obtained from Department of Water Affairs and Forestry
Imported products	List of importers obtained from South African Revenue Services
Exported products	List of exporters obtained from South African Revenue Services

Table 1 - The Producer Price Index (PPI) and the annual percentage change in the PPI on a monthly basis

Base : 2000 = 100

A) Domestic output in South Africa

Year	Jan	Feb	Mar	Apr	May	Jun	Jul	Aug	Sep	Oct	Nov	Dec	Avg	
2006	Index	134,8	134,9	135,6	136,9	138,7	142,6	145,1	148,3	147,2	148,3	149,5	149,1	142,6
	%	+5,1	+4,7	+4,7	+5,0	+5,9	+7,2	+7,9	+9,9	+9,8	+10,6	+10,9	+10,5	+7,7
2007	Index	149,3	150,2	152,5	154,9	157,0	160,5	161,9	162,5	160,9	162,3	162,9	163,3	158,2
	%	+10,8	+11,3	+12,5	+13,1	+13,2	+12,6	+11,6	+9,6	+9,3	+9,4	+9,0	+9,5	+10,9
2008	Index	164,9
	%	+10,4

B) Exported commodities

Year	Jan	Feb	Mar	Apr	May	Jun	Jul	Aug	Sep	Oct	Nov	Dec	Avg	
2006	Index	129,3	128,1	129,1	130,1	132,3	135,4	138,4	143,7	145,7	147,2	150,0	148,4	138,1
	%	+5,0	+3,5	+3,4	+3,3	+4,7	+6,1	+7,0	+11,1	+11,4	+12,8	+15,1	+14,4	+8,1
2007	Index	148,7	150,6	153,4	156,1	158,6	160,5	159,0	158,2	157,8	157,9	160,0	160,1	156,7
	%	+15,0	+17,6	+18,8	+20,0	+19,9	+18,5	+14,9	+10,1	+8,3	+7,3	+6,7	+7,9	+13,5
2008	Index	160,9
	%	+8,2

C) Imported commodities

Year	Jan	Feb	Mar	Apr	May	Jun	Jul	Aug	Sep	Oct	Nov	Dec	Avg	
2006	Index	124,1	123,9	124,5	126,2	125,8	129,5	132,3	133,0	135,4	138,0	139,2	135,9	130,7
	%	+6,4	+6,9	+6,7	+6,1	+4,7	+6,8	+8,2	+7,8	+8,2	+10,4	+11,3	+9,1	+7,7
2007	Index	137,6	135,9	136,8	139,5	140,5	141,7	144,5	145,9	146,9	148,3	149,4	151,3	143,2
	%	+10,9	+9,7	+9,9	+10,5	+11,7	+9,4	+9,2	+9,7	+8,5	+7,5	+7,3	+11,3	+9,6
2008	Index	154,5
	%	+12,3

Table 2 - Contributions to the annual percentage change in the PPI for domestic output of South African industry groups

Group	Contribution at Dec 2007	Contribution at Jan 2008
Agriculture	+2,0	+2,2
Forestry	+0,1	+0,1
Mining and quarrying	+0,9	+1,2
Food at manufacturing	+1,9	+2,0
Beverages	+0,2	+0,3
Tobacco products	+0,1	+0,1
Textile and made-up goods	+0,1	+0,1
Wood and wood products	+0,2	+0,2
Paper and paper products	+0,6	+0,6
Products of petroleum and coal	+1,3	+1,4
Chemicals and chemical products	+0,3	+0,5
Rubber and plastic products	+0,2	+0,3
Non-metallic mineral products	+0,2	+0,2
Basic metals	+0,1	0,0
Metal products	+0,2	+0,2
Non-electrical machinery and equipment	+0,2	+0,2
Electrical machinery and apparatus	+0,2	+0,2
Transport	-0,1	+0,2
Other manufactures	+0,1	+0,1
Electricity	+0,1	+0,2
Gas and Water	+0,1	+0,1
All groups	+9,5	+10,4

Table 3 - Contributions to the monthly percentage change in the PPI for domestic output of South African industry groups

Group	Contribution at Dec 2007	Contribution at Jan 2008
Mining and quarrying	0,0	+0,3
Food at manufacturing	+0,1	+0,1
Paper and paper products	0,0	+0,2
Products of petroleum and coal	+0,2	+0,1
Chemicals and chemical products	-0,1	+0,2
Rubber and plastic products	0,0	+0,1
Basic metals	-0,1	-0,1
Electricity	-0,1	+0,1
Gas and water	-0,2	0,0
All groups	+0,2	+1,0

Table 4 - Contributions to the annual percentage change in the PPI for exported commodities according to group

Group	Contribution at Dec 2007	Contribution at Jan 2008
Agriculture	+0,2	+0,6
Mining and quarrying	+3,6	+3,5
Food at manufacturing	+0,1	+0,4
Beverages	+0,1	+0,1
Textiles and made-up goods	0,0	+0,1
Wood and wood products	+1,1	+0,1
Paper and paper products	+0,1	+0,2
Products of petroleum and coal	+1,1	+1,8
Chemicals and chemical products	0,0	+0,2
Rubber and plastic products	+0,1	+0,1
Basic metals	+1,2	+0,4
Metal products	+0,1	+0,2
Non-electrical machinery and equipment	+0,2	+0,2
Transport	+0,2	+0,1
Other groups	-0,2	+0,1
All groups	+7,9	+8,2

Table 5 - Contributions to the monthly percentage change in the PPI for exported commodities according to group

Group	Contribution at Dec 2007	Contribution at Jan 2008
Mining and quarrying	+0,5	+0,6
Food at manufacturing	0,0	+0,1
Wood and wood products	+0,9	0,0
Paper and paper products	0,0	+0,1
Chemicals and chemical products	0,0	+0,1
Basic metals	-0,5	-0,5
Other groups	-0,8	0,0
All groups	+0,1	+0,5

Table 6 - Contributions to the annual percentage change in the PPI for imported commodities according to group

Group	Contribution at Dec 2007	Contribution at Jan 2008
Agriculture	+0,2	+0,9
Mining and quarrying	+10,3	+6,4
Food at manufacturing	+0,7	+1,1
Paper and paper products	+0,1	+0,1
Products of petroleum and coal	+0,4	+0,3
Chemicals and chemical products	+1,0	+1,9
Non-metallic mineral products	+0,1	-0,0
Basic metals	+0,4	+0,5
Metal products	+0,1	+0,1
Non-electrical machinery and equipment	+0,5	+0,7
Office, accounting and computing machinery	0,0	-0,1
Electrical machinery and apparatus	+0,1	+0,1
Radio ,television and communication equipment and apparatus	-0,1	-0,1
Medical appliances, precision and optical instruments	0,0	+0,1
Transport	+0,3	+0,3
Other groups	-2,8	0,0
All groups	+11,3	+12,3

Table 7 - Contributions to the monthly percentage change in the PPI for imported commodities according to group

Group	Contribution at Dec 2007	Contribution at Jan 2008
Agriculture	0,0	+0,2
Mining and quarrying	+1,7	+0,8
Food at manufacturing	+0,1	+0,2
Products of petroleum and coal	+0,1	0,0
Chemicals and chemical products	+0,1	+0,8
Basic metals	-0,1	+0,1
Non-electrical machinery and equipment	0,0	+0,1
Office, accounting and computing machinery	0,0	-0,1
Other groups	-0,6	0,0
All groups	+1,3	+2,1

Table 8 - Producer Price Index for domestic output of South African industry groups

Base : 2000 = 100

Origin/Group	weight	indices			% change between	
		Jan 2007	Dec 2007	Jan 2008	Dec 2007 and Jan 2008	Jan 2007 and Jan 2008
All groups	100,00	149,3	163,3	164,9	+1,0	+10,4
1. Agriculture, Forestry, Fishing and Mining	29,36	155,6	179,4	181,8	+1,3	+16,8
1.1 Agriculture	8,22	153,9	192,1	191,8	-0,2	+24,6
1.1.1 Food	4,02	151,0	191,6	189,7	-1,0	+25,6
Grain	0,85	187,4	248,1	251,4	+1,3	+34,2
Vegetables	0,59	109,9	161,4	155,4	-3,7	+41,4
Fruits and nuts	1,97	108,1	152,0	140,2	-7,8	+29,7
Oil seeds	0,12	194,2	350,1	358,6	+2,4	+84,7
Sugar cane	0,30	160,8	166,2	167,6	+0,8	+4,2
Other food	0,19	150,3	152,2	152,2	0,0	+1,3
1.1.2 Live animals and animal products	3,68	157,6	187,3	186,7	-0,3	+18,5
Live animals	2,91	165,5	190,4	190,2	-0,1	+14,9
Milk	0,25	103,6	145,8	145,6	-0,1	+40,5
Eggs	0,35	178,7	208,8	205,4	-1,6	+14,9
Other raw animal products	0,17	193,2
1.1.3 Nursery products and other agriculture	0,52	201,2	199,6	236,0	+18,2	+17,3
1.2 Forestry	1,48	111,4	117,4	117,4	0,0	+5,4
1.3 Fishing	0,25	211,7	235,1	235,0	0,0	+11,0
1.4 Mining and quarrying	19,41	165,8	180,0	185,4	+3,0	+11,8
Coal and lignite	4,97	182,7	213,0	222,6	+4,5	+21,8
Crude petroleum and natural gas	0,62	94,4
Metal ores	11,47	169,9	176,1	181,4	+3,0	+6,8
Other minerals	2,35	132,1	135,2	134,2	-0,7	+1,6
2. Manufacturing	62,31	150,0	161,9	163,3	+0,9	+8,9
2.1 Food at Manufacturing	5,76	151,7	178,8	180,1	+0,7	+18,7
Meat and meat products	0,42	182,4	206,1	196,5	-4,7	+7,7
Prepared and preserved fish	0,18	162,3	168,3	168,8	+0,3	+4,0
Fruits and vegetable products	0,49	134,2	139,9	140,1	+0,1	+4,4
Fats and oils	0,32	153,2	213,6	239,9	+12,3	+56,5
Dairy products	0,98	155,2	188,9	190,0	+0,6	+22,4
Grain mill products and bakery products	1,32	126,9	170,4	171,6	+0,7	+35,2
Sugar	0,44	131,9	136,5	135,8	-0,5	+3,0
Coffee and tea	0,16	136,3	146,8	147,5	+0,5	+8,2
Other food	1,45	154,0	175,9	179,3	+1,9	+16,4
2.2 Beverages	3,04	160,5	170,3	171,1	+0,5	+6,6
Alcoholic	1,73	167,8	179,2	180,3	+0,6	+7,4
Non-alcoholic	1,31	140,8	146,4	146,4	0,0	+4,0
2.3 Tobacco products	0,59	181,9	193,9	193,9	0,0	+6,6
2.4 Textiles and made-up goods	1,06	126,2	131,5	131,5	0,0	+4,2
Yarn and thread, woven and tufted textile fabrics (prepared for spinning)	0,35	123,8	130,7	130,7	0,0	+5,6
Textile articles other than apparel	0,71	130,1	133,0	133,0	0,0	+2,2
2.5 Wearing apparel	1,48	122,6	125,3	125,3	0,0	+2,2
Knitted or crocheted fabrics	0,38	129,2	132,5	132,5	0,0	+2,6
Wearing apparel	1,10	120,9	123,6	123,6	0,0	+2,2
Men's and boys' clothing	0,02	122,3	125,7	125,7	0,0	+2,8
Women's and girls' clothing	0,00	-	-	-	-	-
Other including fur apparel	1,08	147,7	148,3	148,3	0,0	+0,4
2.6 Leather and leather products	0,32	111,0	109,6	109,5	-0,1	-1,4
2.7 Footwear	0,27	129,1	134,5	135,2	+0,5	+4,7
2.8 Wood and wood products	1,40	159,1	176,8	179,0	+1,2	+12,5
2.9 Paper and paper products	4,96	140,8	147,4	151,8	+3,0	+7,8
Pulp, paper and paperboard	3,20	130,8	134,7	137,6	+2,2	+5,2
Printing, publishing and allied industries	1,76	148,4	157,0	162,4	+3,4	+9,4
2.10 Products of petroleum and coal	4,98	191,2	252,6	255,4	+1,1	+33,6

Table 8 - Producer Price Index for Domestic output of South African industry groups (concluded)

Base : 2000 = 100

Origin/Group	weight	indices			% change between	
		Jan 2007	Dec 2007	Jan 2008	Dec 2007 and Jan 2008	Jan 2007 and Jan 2008
2.11 Chemicals and chemical products	6,74	141,0	148,3	153,0	+3,2	+8,5
Basic chemicals	3,72	145,9	154,9	162,4	+4,8	+11,3
Basic organic chemicals	0,64	244,2
Basic inorganic chemicals	1,91	131,7
Fertilizers pesticides	0,42	159,9	192,9	213,2	+10,5	+33,3
Other basic chemicals	0,75	142,3	145,7	150,0	+3,0	+5,4
Compounded chemical products	3,02	136,5	142,3	144,3	+1,4	+5,7
Paints and varnished and related products, artists' colours and ink	1,55	180,7
Pharmaceutical products	0,39	127,1	129,7	129,8	+0,1	+2,1
Soap, cleaning preparations, perfumes and toilet preparations	0,63	140,8
Other compounded chemical products	0,45	139,2	145,9	148,5	+1,8	+6,7
2.12 Rubber and plastic products	2,59	146,3	156,0	161,9	+3,8	+10,7
Rubber products	0,88	170,7	185,7	192,5	+3,7	+12,8
Plastic products	1,71	135,6	143,0	148,3	+3,7	+9,4
2.13 Non-metallic mineral products	1,96	159,7	172,0	173,7	+1,0	+8,8
Glass and glass products	0,04	139,2	143,8	143,8	0,0	+3,3
Other non-metallic minerals products	1,92	166,7	181,7	184,3	+1,3	+10,4
2.14 Basic metals	6,66	180,5	183,1	181,3	-1,0	-0,4
Basic iron and steel	4,15	181,8	200,6	200,6	0,0	+10,3
Rolled, drawn and folded products	2,51	156,0	160,1	160,1	0,0	+2,6
Other non - ferrous basic metals and articles	0,00	-	-	-	-	-
2.15 Metal products	3,33	152,0	162,5	162,5	0,0	+6,9
Structural metal products and parts thereof	0,84	161,0	171,9	171,9	0,0	+6,8
Other fabricated metal products	2,49	146,4	156,6	156,6	0,0	+7,0
2.16 Non-electrical machinery and equipment	2,35	133,3	141,1	141,1	0,0	+5,9
General purpose machinery	2,03	125,0	133,5	133,5	0,0	+6,8
Special purpose machinery	0,24	137,1	144,6	144,6	0,0	+5,5
Domestic appliances and parts thereof	0,08	127,6	132,9	132,9	0,0	+4,2
2.17 Office, accounting and computing machinery	0,20	101,0	100,4	100,4	0,0	-0,6
2.18 Electrical machinery and apparatus	1,92	194,0	206,3	206,3	0,0	+6,3
Electric motors, generators and transformers and parts thereof	0,37	217,1	238,1	238,1	0,0	+9,7
Electricity distribution and control apparatus and parts thereof	0,56	138,4	147,7	147,7	0,0	+6,7
Insulated wire and cable, optical fibre cables	0,73	274,8	288,1	288,1	0,0	+4,8
Other electrical machinery and apparatus	0,26	132,3	142,8	142,8	0,0	+7,9
2.19 Radio, television and communication equipment and apparatus	0,48	127,4	130,0	130,0	0,0	+2,0
2.20 Medical appliances, precision and optical instruments, watches and clocks	0,29	135,3	137,2	139,9	+2,0	+3,4
Medical and surgical equipment and orthopaedic appliances	0,28	137,5	139,5	142,4	+2,1	+3,6
Watches, clocks and parts thereof	0,01	120,8	121,0	123,2	+1,8	+2,0
2.21 Transport	5,96	130,7	134,8	134,8	0,0	+3,1
Motor vehicles, parts and accessories thereof	5,86	131,6	135,7	135,7	0,0	+3,1
Motor vehicles	2,11	128,9	132,8	132,8	0,0	+3,0
Parts and accessories n.e.c of motor vehicles	3,75	139,5	144,2	144,2	0,0	+3,4
Bodies(coachwork)for motor vehicles, trailers and semi-trailers; parts and accessories thereof	0,08	115,0	118,8	118,8	0,0	+3,3
Bodies for motor vehicles	0,03	154,6
Trailers, semi-trailer and containers	0,03	112,3
Parts for motor vehicles bodies ,trailers, semi-trailers and containers	0,01	144,5
Other transport equipment	0,01	106,1	107,4	107,4	0,0	+1,2
2.22 Furniture	1,02	128,5	132,8	132,8	0,0	+3,3
2.23 Other manufactures	4,95	122,6	128,2	128,2	+0,0	+4,6
3. Electricity, Gas and Water	8,33	111,4	117,6	120,5	+2,5	+8,2
Electricity	6,86	105,7	110,3	113,5	+2,9	+7,4
Gas and water	1,47	182,9	208,6	208,7	0,0	+14,1

Table 9 - Producer Price Index for exported commodities according to group

Base : 2000 = 100

Origin/Group	weight	indices			% change between	
		Jan 2007	Dec 2007	Jan 2008	Dec 2007 and Jan 2008	Jan 2007 and Jan 2008
All groups	100,00	148,7	160,1	160,9	+0,5	+8,2
1. Agriculture, Forestry, Fishing and Mining	30,32	153,2	170,1	173,5	+2,0	+13,3
1.1 Agriculture	1,62	132,7	149,5	149,3	-0,1	+12,5
1.1.1 Food	1,58	130,7	147,1	147,0	-0,1	+12,5
Grain	0,19	207,7	243,5	243,5	0,0	+17,2
Vegetables	0,00	-	-	-	-	-
Fruits and nuts	1,26	59,8	60,7	60,4	-0,5	+1,0
Oil seeds	0,03	-	-	-	-	-
Sugar cane	0,02	-	-	-	-	-
Other food	0,08	150,3	152,2	152,2	0,0	+1,3
1.1.2 Live animals and animal products	0,04	164,7	184,8	184,3	-0,3	+11,9
Live animals	0,01	100,0	100,0	100,0	0,0	0,0
Milk	0,00	-	-	-	-	-
Eggs	0,00	-	-	-	-	-
Other raw animal products	0,03	170,4	192,2	191,6	-0,3	+12,4
1.1.Other agriculture	0,00	-	-	-	-	-
1.2 Forestry	0,09	100,0	100,0	100,0	0,0	0,0
1.3 Fishing	0,06	205,5	231,2	230,8	-0,2	+12,3
1.4 Mining and quarrying	28,55	156,5	173,3	177,4	+2,4	+13,4
Coal and lignite	6,21	208,0	247,3	250,0	+1,1	+20,2
Crude petroleum and natural gas	0,00	-	-	-	-	-
Metal ores	19,81	141,2	153,6	161,7	+5,3	+14,5
Other minerals	2,53	130,5	130,8	128,3	-1,9	-1,7
2. Manufacturing	69,68	146,7	155,8	155,5	-0,2	+6,0
2.1 Food at Manufacturing	2,19	126,1	135,1	137,5	+1,8	+9,0
Meat and meat products	0,11	116,0	117,8	117,8	0,0	+1,6
Prepared and preserved fish	0,24	131,2	136,9	137,7	+0,6	+5,0
Fruits and vegetable products	0,62	119,5	122,0	122,2	+0,2	+2,3
Animal and vegetable oils,fats and similar products	0,09	140,3	187,4	199,4	+6,4	+42,1
Dairy products	0,03	136,8	143,2	143,1	-0,1	+4,6
Grain mill products and bakery products	0,05	122,2	174,1	177,7	+2,1	+45,4
Sugar	0,78	127,5	128,0	126,1	-1,5	-1,1
Coffee and tea	0,00	-	-	-	-	-
Other food	0,27	138,0	148,0	161,4	+9,1	+17,0
2.2 Beverages	1,55	118,6	127,5	128,0	+0,4	+7,9
Alcoholic	1,39	119,9	128,3	128,9	+0,5	+7,5
Non-alcoholic	0,16	103,4	117,1	117,6	+0,4	+13,7
2.3 Tobacco products	0,19	112,7	118,4	118,4	0,0	+5,1
2.4 Textiles and made-up goods	0,56	161,0	172,5	172,5	0,0	+7,1
Yarn and thread, woven and tufted textile fabrics(prepared for spinning)	0,03	180,8	196,7	196,7	0,0	+8,8
Textile articles other than apparel	0,53	114,9	116,2	116,2	0,0	+1,1
2.5 Wearing apparel	0,19	108,5	108,5	108,5	0,0	0,0
Knitted or crocheted fabrics	0,01	118,3	118,3	118,3	0,0	0,0
Wearing apparel	0,18	106,0	106,0	106,0	0,0	0,0
Men`s and boys` clothing	0,03	110,3	110,3	110,3	0,0	0,0
Women`s and girls` clothing	0,02	110,3	110,3	110,3	0,0	0,0
Other, including wearing apparel	0,13	101,4	101,4	101,4	0,0	0,0
2.6 Leather and leather products	0,29	102,6	98,8	98,3	-0,5	-4,2
2.7 Footwear	0,04	155,7	166,7	166,7	0,0	+7,1
2.8 Wood and wood products	0,83	162,4	179,9	181,5	+0,9	+11,8
2.9 Paper and paper products	1,80	122,0	124,5	129,8	+4,3	+6,4
Pulp, paper and paperboard	1,52	123,8	126,2	132,3	+4,8	+6,9
Printing, publishing and allied industries	0,28	110,9	113,4	113,4	0,0	+2,3
2.10 Products of petroleum and coal	2,35	171,6	254,8	257,1	+0,9	+49,8

Table 9 - Producer Price Index for exported commodities according to group (concluded)

Base : 2000 = 100

Origin/Group	weight	indices			% change between	
		Jan 2007	Dec 2007	Jan 2008	Dec 2007 and Jan 2008	Jan 2007 and Jan 2008
2.11 Chemicals and chemical products	5,10	127,8	129,9	130,9	+0,8	+2,4
Basic chemicals	3,93	133,7	135,4	136,6	+0,9	+2,2
Basic organic chemicals	0,57	257,4
Basic inorganic chemicals	2,10	130,7
Fertilizers pesticides	0,00	-	-	-	-	-
Other basic chemicals	1,26	133,1	134,7	136,1	+1,0	+2,3
Compounded chemical products	1,17	112,8	115,8	116,5	+0,6	+3,3
Paints and varnished and related products, artists' colours and ink	0,03	173,9
Pharmaceutical products	0,00	124,2	130,4	131,4	+0,8	+5,8
Soap, cleaning preparations, perfumes and toilet preparations	0,72	137,2
Other compounded chemical products	0,41	111,4	114,0	114,6	+0,5	+2,9
2.12 Rubber and plastic products	0,90	128,2	135,5	140,8	+3,9	+9,8
Rubber products	0,50	152,9	165,8	176,4	+6,4	+15,4
Plastic products	0,40	102,6	104,2	104,2	0,0	+1,6
2.13 Non-metallic mineral products	0,67	127,5	133,4	134,0	+0,4	+5,1
Glass and glass products	0,00	-	-	-	-	-
Other non-metallic minerals products	0,67	127,5	133,4	134,0	+0,4	+5,1
2.14 Basic metals	33,25	184,8	191,1	187,4	-1,9	+1,4
Basic iron and steel	5,92	184,8	209,8	209,8	0,0	+13,5
Rolled, drawn and folded products	7,58	152,6	118,5	118,5	0,0	-22,3
Other non - ferrous basic metals and articles	19,75	184,6	174,2	167,3	-4,0	-9,4
2.15 Metal products	1,31	149,3	165,1	165,1	0,0	+10,6
Structural metal products and parts thereof	0,51	156,5	173,6	173,6	0,0	+10,9
Other fabricated metal products	0,80	141,6	156,0	156,0	0,0	+10,2
2.16 Non-electrical machinery and equipment	5,72	127,3	132,6	132,6	0,0	+4,2
General purpose machinery	3,93	120,3	124,9	124,9	0,0	+3,8
Special purpose machinery	1,60	133,0	138,9	138,9	0,0	+4,4
Domestic appliances and parts thereof	0,19	124,6	128,4	128,4	0,0	+3,0
2.17 Office, accounting and computing machinery	0,23	100,5	99,7	99,7	0,0	-0,8
2.18 Electrical machinery and apparatus	0,83	132,5	137,9	137,9	0,0	+4,1
Electric motors, generators and transformers and parts thereof	0,12	169,6	169,0	169,0	0,0	-0,4
Electricity distribution and control apparatus and parts thereof	0,12	136,5	141,4	141,4	0,0	+3,6
Insulated wire and cable, optical fibre cables	0,25	160,3	173,9	173,9	0,0	+8,5
Other electrical machinery and apparatus	0,34	113,3	118,5	118,5	0,0	+4,6
2.19 Radio, television and communication equipment and apparatus	1,14	101,7	100,0	100,0	0,0	-1,7
2.20 Medical appliances, precision and optical instruments, watches and clocks	0,54	137,8	139,8	143,9	+2,9	+4,4
Medical and surgical equipment and orthopaedic appliances	0,54	143,0	145,0	149,7	+3,2	+4,7
Watch, clocks and parts thereof	0,00	107,4	109,5	110,0	+0,5	+2,4
2.21 Transport	7,43	115,6	119,3	119,3	0,0	+3,2
Motor vehicles, parts and accessories thereof	2,50	118,5	122,9	122,9	0,0	+3,7
Motor vehicles	1,27	102,0	104,3	104,3	0,0	+2,3
Parts and accessories of motor vehicles	1,23	144,1	153,0	153,0	0,0	+6,2
Bodies(coachwork)for motor vehicles, trailers and semi-trailers; parts and accessories thereof	0,82	129,1	135,1	135,1	0,0	+4,6
Bodies for motor vehicles	0,00	-	-	-	-	-
Trailers, semi-trailer and containers	0,18	101,0
Parts for motor vehicles bodies, trailers, semi-trailers and containers	0,64	158,2
Other transport equipment	4,11	104,3	105,1	105,1	0,0	+0,8
2.22 Furniture	1,04	100,4	100,5	100,5	0,0	+0,1
2.23 Other manufactures	1,53	101,7	102,8	102,8	0,0	+1,1

Table 10 - Producer Price Index for imported commodities according to group

Base : 2000 = 100

Origin/Group	weight	indices			% change between	
		Jan 2007	Dec 2007	Jan 2008	Dec 2007 and Jan 2008	Jan 2007 and Jan 2008
All groups	100,00	137,6	151,3	154,5	+2,1	+12,3
1. Agriculture, Forestry, Fishing and Mining	16,73	204,5	273,3	285,6	+4,5	+39,7
1.1 Agriculture	0,89	127,3	164,6	178,9	+8,7	+40,5
1.1.1 Food and market gardening	0,79	134,3	183,1	200,1	+9,3	+49,0
Grain	0,37	133,0	193,6	211,4	+9,2	+58,9
Vegetables	0,01
Fruits and nuts	0,03	152,3	148,3	148,9	+0,4	-2,2
Oil seeds	0,05
Sugar cane	0,00	-	-	-	-	-
Other food	0,33	141,3	150,3	170,1	+13,2	+20,4
1.1.2 Live animals and animal products	0,06	122,9	121,1	122,9	+1,5	+0,1
Live animals	0,02	105,8	105,8	105,8	0,0	0,0
Milk	0,00	-	-	-	-	-
Eggs	0,00	-	-	-	-	-
Other raw animal products	0,04	175,0
1.1.3 Nursery products and other agriculture	0,04	108,8	115,6	122,9	+6,3	+13,0
1.2 Forestry	0,05
1.3 Fishing	0,08	101,3	101,3	101,3	0,0	0,0
1.4 Mining and quarrying	15,70	222,3	298,5	310,4	+4,0	+39,6
Coal and lignite	0,02	100,8	100,8	100,8	0,0	0,0
Crude petroleum and natural gas	12,81	347,1
Metal ores	0,79	96,2	96,2	96,2	0,0	0,0
Other minerals	2,08	226,5	305,5	317,8	+4,0	+40,3
2. Manufacturing	83,27	127,4	133,4	135,4	+1,5	+6,3
2.1 Food at Manufacturing	3,24	135,4	165,3	172,8	+4,5	+27,6
Meat and meat products	0,65	164,6	172,5	174,9	+1,4	+6,3
Prepared and preserved fish	0,07	117,4	121,1	121,1	0,0	+3,2
Fruits and vegetable products	0,06	134,7	134,1	137,5	+2,5	+2,1
Fats and oils	0,99	131,2	211,3	232,4	+10,0	+77,1
Dairy products	0,15	131,8	169,1	169,1	0,0	+28,3
Grain mill products and bakery products	0,73	140,5	147,0	147,0	0,0	+4,6
Sugar	0,05	148,5	148,5	148,5	0,0	0,0
Coffee and tea	0,02	128,1	137,0	139,7	+2,0	+9,1
Other food	0,52	116,1	125,8	130,4	+3,7	+12,3
2.2 Beverages	0,58	141,0	149,5	149,5	0,0	+6,0
Alcoholic	0,35	142,3	151,0	151,0	0,0	+6,1
Non-alcoholic	0,23	108,1	109,3	109,6	+0,3	+1,4
2.3 Tobacco products	0,05	119,0	122,5	122,5	0,0	+2,9
2.4 Textiles and made-up goods	1,36	114,3	116,9	117,0	+0,1	+2,4
Yarn and thread, woven and tufted textile fabrics(prepared for spinning)	0,94	108,4	110,2	110,3	+0,1	+1,8
Textile articles Other than apparel	0,42	124,1	128,1	128,2	+0,1	+3,3
2.5 Wearing apparel	0,76	118,1	119,6	119,8	+0,2	+1,4
Knitted or crocheted fabrics	0,05	117,5	119,2	119,2	0,0	+1,4
Wearing apparel	0,70	118,6	120,1	120,3	+0,2	+1,4
Men's and boys' clothing	0,09	108,5	111,2	111,2	0,0	+2,5
Women's and girls' clothing	0,35	123,9	120,4	121,0	+0,5	-2,3
Other including fur apparel	0,26	149,8	168,5	168,5	0,0	+12,5
2.6 Leather and leather products	0,41	123,3	129,5	131,4	+1,5	+6,6
2.7 Footwear	0,67	115,5	116,2	116,4	+0,2	+0,8
2.8 Wood and wood products	0,63	132,3	140,2	140,8	+0,4	+6,4
2.9 Paper and paper products	1,87	125,2	126,8	127,3	+0,4	+1,7
Pulp, paper and paperboard	1,34	124,0	127,4	128,3	+0,7	+3,5
Printing, publishing and allied industries	0,53	126,6	126,5	126,5	0,0	-0,1
2.10 Products of petroleum and coal	2,20	105,8	127,9	132,0	+3,2	+24,8

Table 10 - Producer Price Index for imported commodities according to group (concluded)

Base : 2000 = 100

Origin/Group	weight	indices			% change between	
		Jan 2007	Dec 2007	Jan 2008	Dec 2007 and Jan 2008	Jan 2007 and Jan 2008
2.11 Chemicals and chemical products	10,63	140,8	152,3	161,5	+6,0	+14,7
Basic chemicals	6,26	154,4	175,9	181,6	+3,2	+17,6
Basic organic chemicals	3,02	180,3
Basic inorganic chemicals	0,87	121,0
Fertilizers pesticides	0,82	158,2	189,0	209,9	+11,1	+32,7
Other basic chemicals	1,55	154,1	175,1	179,9	+2,7	+16,7
Compounded chemical products	4,37	127,4	129,3	141,8	+9,7	+11,3
Paints and varnished and related products, artists' colours and ink	0,34	134,3
Pharmaceutical products	0,90	136,0	136,3	136,3	0,0	+0,2
Soap, cleaning preparations, perfumes and toilet preparations	0,54	131,5
Other compounded chemical products	2,59	121,7	124,7	145,6	+16,8	+19,6
2.12 Rubber and plastic products	2,44	118,9	120,2	120,4	+0,2	+1,3
Rubber products	0,95	115,8	120,2	120,6	+0,3	+4,1
Plastic products	1,49	121,3	120,0	120,1	+0,1	-1,0
2.13 Non-metallic mineral products	1,57	129,9	133,0	132,7	-0,2	+2,2
Glass and glass products	0,03	112,3	113,9	112,8	-1,0	+0,4
Other non-metallic minerals products	1,54	137,5	141,3	141,3	0,0	+2,8
2.14 Basic metals	3,76	166,1	181,5	185,3	+2,1	+11,6
Basic iron and steel	0,70	155,5	159,0	160,2	+0,8	+3,0
Rolled, drawn and folded products	2,27	157,0	160,8	162,9	+1,3	+3,8
Other non - ferrous basic metals and articles	0,79	175,4	201,7	207,8	+3,0	+18,5
2.15 Metal products	2,06	129,4	134,2	134,9	+0,5	+4,3
Structural metal products and parts thereof	0,05	110,5	109,4	109,4	0,0	-1,0
Other fabricated metal products	2,01	131,1	136,4	137,2	+0,6	+4,7
2.16 Non-electrical machinery and equipment	13,92	126,0	130,6	131,3	+0,5	+4,2
General purpose machinery	8,69	133,5	140,3	140,8	+0,4	+5,5
Special purpose machinery	4,42	120,5	123,3	123,9	+0,5	+2,8
Domestic appliances and parts thereof	0,81	127,3	134,6	136,8	+1,6	+7,5
2.17 Office, accounting and computing machinery	5,41	76,5	76,0	72,6	-4,5	-5,1
2.18 Electrical machinery and apparatus	2,95	122,9	126,9	127,4	+0,4	+3,7
Electric motors, generators and transformers and parts thereof	0,68	103,0	103,0	103,0	0,0	0,0
Electricity distribution and control apparatus and parts thereof	0,97	126,1	128,5	128,6	+0,1	+2,0
Insulated wire and cable, optical fibre cables	0,29	185,3	192,3	197,0	+2,4	+6,3
Other electrical machinery and apparatus	1,01	120,5	127,9	128,4	+0,4	+6,6
2.19 Radio, television and communication equipment and apparatus	9,79	98,7	97,2	97,3	+0,1	-1,4
2.20 Medical appliances, precision and optical instruments, watches and clocks	3,33	119,5	121,1	121,4	+0,2	+1,6
Medical and surgical equipment and orthopaedic appliances	3,16	119,0	121,1	121,4	+0,2	+2,0
Watches, clocks and parts thereof	0,17	121,9	121,1	121,7	+0,5	-0,2
2.21 Transport	13,57	141,6	144,3	144,8	+0,3	+2,3
Motor vehicles, parts and accessories thereof	4,00	145,9	148,8	149,3	+0,3	+2,3
Motor vehicles	2,72	102,8	103,6	103,4	-0,2	+0,6
Parts and accessories n.e.c of motor vehicles	1,28	154,6	158,0	158,6	+0,4	+2,6
Bodies(coachwork)for motor vehicles, trailers and semi-trailers, parts and accessories thereof	0,70	152,3	156,6	157,2	+0,4	+3,2
Bodies for motor vehicles	0,00	-	-	-	-	-
Trailers, semi-trailer and containers	0,04	116,7
Parts for motor vehicles bodies, trailers, semi-trailers and containers	0,66	157,2
Other transport equipment	8,88	108,3	109,5	109,9	+0,4	+1,5
2.22 Furniture	0,63	106,7	107,3	107,4	+0,1	+0,7
2.23 Other manufactures	1,43	113,2	116,4	115,6	-0,7	+2,1

Table 11 - Producer Price Index for materials used in certain industries

Base : 2000 = 100

Industry	indices			% change between	
	Jan 2007	Dec 2007	Jan 2008	Dec 2007 and Jan 2008	Jan 2007 and Jan 2008
Building and construction	171,4	185,5	187,6	+1,1	+9,5
Building industries	174,9	187,2	188,8	+0,9	+7,9
Civil engineering	171,6	181,9	184,1	+1,2	+7,3
Electrical engineering	163,4	170,5	172,2	+1,0	+5,4
Mechanical engineering	158,4	167,8	168,1	+0,2	+6,1

Table 12 - Producer Price Index for selected materials

Base : 2000 = 100

Type of materials	indices			% change between	
	Jan 2007	Dec 2007	Jan 2008	Dec 2007 and Jan 2008	Jan 2007 and Jan 2008
Aggregated crushed stone	200,8	227,7	227,7	0,0	+13,4
Bitumen	221,8	296,3	294,4	-0,6	+32,7
Bitumen and Acrylic Emulsion	144,0	161,5	161,5	0,0	+12,2
Boxes, corrugated cardboard	130,7	143,8	143,8	0,0	+10,0
Bricks - Face	198,1	216,9	221,8	+2,3	+12,0
Bricks - Stock	221,8	231,0	237,7	+2,9	+7,2
Cement building blocks	221,5	232,9	232,9	0,0	+5,1
Coal, bituminous	157,4	178,6	195,6	+9,5	+24,3
Coal, bituminous - for local sales	230,5	282,0	286,5	+1,6	+24,3
Cobbles, grade A	182,8	180,0	176,7	-1,8	-3,3
Cobbles, grade B	147,1	144,8	142,2	-1,8	-3,3
Large nuts, grade A	152,4	152,4	152,4	0,0	0,0
Large nuts, grade B	217,0	248,2	247,8	-0,2	+14,2
Small nuts, grade A	219,3	320,0	383,2	+19,8	+74,7
Small nuts, grade B	302,9	400,8	397,2	-0,9	+31,1
Peas, grade A	231,8	324,6	338,8	+4,4	+46,2
Peas, grade B	225,9	302,4	357,9	+18,4	+58,4
Anthracite - for local sales Grade SP	100,9	100,9	100,9	0,0	0,0
Anthracite - for local sales Grade A	100,7	100,7	100,7	0,0	0,0
Diesel oil					
Coast and Witwatersrand	211,6	301,7	304,1	+0,8	+43,7
Retail Metropolitan and other urban areas	293,2	366,0	379,6	+3,7	+29,5
Retail Metropolitan areas	231,2	288,5	299,3	+3,7	+29,5
Drop in ceiling tiles-gypsum	139,2	149,7	149,7	0,0	+7,5
Drop in ceiling tiles-masonite	168,0	169,4	169,4	0,0	+0,8
Extruded aluminium section	202,6	218,8	206,0	-5,9	+1,7
Foam insulation materials	205,3	205,6	205,6	0,0	+0,1
Polyurethane	205,3	205,6	205,6	0,0	+0,1
Glass, for building industry	100,3	103,9	103,9	0,0	+3,6
Gypsum board	158,4	170,3	170,3	0,0	+7,5
Kraft paper	136,8	134,9	135,3	+0,3	-1,1
Leather, bovine hide	127,8	137,0	137,0	0,0	+7,2
Modified Bitumen sheeting	146,1	162,2	162,2	0,0	+11,0
Natural stone, cut and sawn	114,8	120,5	120,5	0,0	+5,0
Ordinary and extended cement	212,5	227,1	237,4	+4,5	+11,7
Paints	161,1	173,8	176,4	+1,5	+9,5
Paper, newsprint	165,4	165,4	165,4	0,0	0,0
Petro-chemical building materials	160,4	171,4	175,3	+2,3	+9,3
Petrol, 93 octane - Coast	204,9	278,0	279,5	+0,5	+36,4
Witwatersrand	204,9	278,0	279,5	+0,5	+36,4
Plastic bottles	161,5	169,2	169,2	0,0	+4,8
Plastic, bulk forms	164,7	172,0	180,3	+4,8	+9,5
Profiled aluminium roofing	190,2	167,5	166,9	-0,4	-12,3
Resilient floor coverings	168,5	175,1	179,3	+2,4	+6,4
Rubber crude	137,0	136,1	136,1	0,0	-0,7
Synthetic	173,7	171,9	171,9	0,0	-1,0
Synthetic - Local	173,7	171,9	171,9	0,0	-1,0
SA Pine, kiln dried	214,0	237,8	237,8	0,0	+11,1
Sand	140,6	140,6	140,6	0,0	0,0
Sulphuric acid	111,2	153,6	190,6	+24,1	+71,4
Tar	181,5	195,6	208,4	+6,5	+14,8
Transformer oil	228,3	243,9	244,1	+0,1	+6,9
Tyres and tubes	169,4	185,8	192,1	+3,4	+13,4
Waterproofing	158,1	167,6	171,1	+2,1	+8,2
Wood products, excluding minewood	155,5	170,0	172,2	+1,3	+10,7
Wool, auction prices, 18 types	191,1	220,0	237,5	+8,0	+24,3

Table 12 - Producer Price Index for selected materials

Base : 2000 = 100

Type of Materials	indices			% change between		
	Jan 2007	Dec 2007	Jan 2008	Dec 2007 and Jan 2008	Jan 2007 and Jan 2008	
Coumarone indene resin (imported)	145,7	145,7	145,7	0,0	0,0	
Polybutadiene	240,4	210,7	210,7	0,0	-12,4	
Aluminium	Anodising	129,7	136,0	139,1	+2,3	+7,2
	Basic forms	172,9	150,4	156,7	+4,2	-9,4
	Extruded products	202,6	218,8	206,0	-5,9	+1,7
	Sheeting	178,8	254,9	267,5	+4,9	+49,6
Aluminium lever furniture	153,3	174,2	174,2	0,0	+13,6	
Angles, mild steel	169,8	184,3	184,3	0,0	+8,5	
Bead wire	117,7	118,8	130,6	+9,9	+11,0	
Bearings, ball and roller	162,1	176,3	182,6	+3,6	+12,6	
Billets, mild steel	188,1	215,0	215,0	0,0	+14,3	
Building boards	133,4	148,4	148,4	0,0	+11,2	
Ceiling materials	181,7	193,6	193,6	0,0	+6,5	
Cement - Retail price	184,6	196,3	200,1	+1,9	+8,4	
Ceramic and encaustic wall and floor tiles and mosaics	111,4	110,5	109,5	-0,9	-1,7	
Civil engineering plant	146,5	153,7	153,7	0,0	+4,9	
Coated profiled GMS sheeting (roofing)	199,0	214,5	214,5	0,0	+7,8	
Concrete roof tiles	165,1	194,4	194,4	0,0	+17,7	
Construction machinery (excluding trucks)	119,7	122,9	123,0	+0,1	+2,8	
Containers, glass	148,4	154,1	154,1	0,0	+3,8	
Copper, basic forms	304,0	349,8	337,7	-3,5	+11,1	
Cylinder lock set	169,5	192,2	192,2	0,0	+13,4	
Diesel at wholesale level	Coast	215,1	283,9	284,3	+0,1	+32,2
	Witwatersrand	218,7	287,3	287,7	+0,1	+31,6
Drainage	124,1	125,1	125,1	0,0	+0,8	
Electrical contracting materials	182,2	189,8	190,2	+0,2	+4,4	
Fibre cement roof sheet	170,8	186,6	186,6	0,0	+9,3	
Fibrous insulation	Preformed pipe sections	144,4	149,3	149,3	0,0	+3,4
	Batten board	159,9	164,5	164,5	0,0	+2,9
	Mattresses	161,4	166,2	166,2	0,0	+3,0
	Ceiling insulation	130,3	134,7	134,7	0,0	+3,4
Flush doors	162,1	241,8	260,6	+7,8	+60,8	
Hinges	148,2	155,3	155,3	0,0	+4,8	
Imported Meranti	100,2	116,5	116,5	0,0	+16,3	
Insulator, porcelain	153,7	159,3	159,3	0,0	+3,6	
Ironmongery	132,4	139,4	139,6	+0,1	+5,4	
Joint Sealants	132,9	152,1	152,1	0,0	+14,4	
Lever locks	160,7	176,9	176,9	0,0	+10,1	
Mining machinery	135,0	139,4	139,4	0,0	+3,3	
Partitioning materials	181,7	193,6	193,6	0,0	+6,5	
Plate, mild steel	199,0	214,5	214,5	0,0	+7,8	
Plumbing	139,1	143,1	143,4	+0,2	+3,1	
Processing oil	118,8	145,8	169,2	+16,0	+42,4	
Reinforcing steel	215,3	234,4	234,4	0,0	+8,9	
Rubber industry's indices:	Natural rubber - imported	193,5	213,9	214,5	+0,3	+10,9
	Carbon black - N774	160,2	177,7	197,5	+11,1	+23,3
	Carbon black - N660	175,5	196,2	217,9	+11,1	+24,2
Self-Adhesive sheeting	138,6	146,9	146,9	0,0	+6,0	
Sheet, galvanized	199,0	214,5	214,5	0,0	+7,8	
Sheet, uncoated	217,9	231,2	231,2	0,0	+6,1	
Steel tubes, pipes and fittings	126,8	117,5	117,5	0,0	-7,3	
Structural steel products	190,9	212,9	212,9	0,0	+11,5	
Structural steel, unworked	213,2	226,7	226,7	0,0	+6,3	
Synthetic rubber	1502	233,8	210,0	210,0	0,0	-10,2
	1712	213,9	200,2	200,2	0,0	-6,4
Tinplate	147,2	162,0	162,0	0,0	+10,1	
Trucks	135,6	138,6	138,6	0,0	+2,2	
Trucks and buses	133,0	134,9	134,9	0,0	+1,4	
Vinyl sheeting - flooring	141,1	155,5	164,8	+6,0	+16,8	
Vinyl tiles flooring	154,6	170,4	170,4	0,0	+10,2	
Woven needle punch carpeting	169,3	165,3	165,3	0,0	-2,4	

Table 12 - Producer Price Index for selected materials (concluded)

Base : 2000 = 100

Type of materials	indices			% change between	
	Jan 2007	Dec 2007	Jan 2008	Dec 2007 and Jan 2008	Jan 2007 and Jan 2008
Concrete pipes	145,8	148,5	148,5	0,0	+1,9
Copper Piping	314,1	310,5	310,5	0,0	-1,1
Enamel paints	163,1	176,7	177,7	+0,6	+9,0
Extruded aluminium - distributor level	185,9	179,6	177,8	-1,0	-4,4
Glass for the building industry - cut to size	194,6	214,5	214,5	0,0	+10,2
PVC Pipes	147,7	147,7	147,7	0,0	0,0
Profiled aluminium roofing - distributor level	174,5	152,4	150,1	-1,5	-14,0
Sementitious paints	179,6	184,6	186,8	+1,2	+4,0
Small steel sections	116,0	113,0	113,0	0,0	-2,6
Stainless steel products, flat rolled	217,0	208,2	208,2	0,0	-4,1
Tile adhesives	165,9	176,9	189,7	+7,2	+14,3
Wash and basin	145,2	145,2	145,2	0,0	0,0
Water-closet system (WC's)	130,5	131,2	131,2	0,0	+0,5
White glazed ceramic tiles	146,6	180,2	180,2	0,0	+22,9

ADDITIONAL INFORMATION

EXPLANATORY NOTES

- Introduction** 1 This publication contains results of monthly surveys of prices of locally produced commodities (including exports), imported and exported commodities. The price indices are calculated at base 2000=100.
- Scope of the PPI survey** 2 The indices are compiled on a gross industry basis, i.e. each index relates to those articles, which are produced, imported and exported by the designated industries of the South African economy. Selling prices are collected from manufacturers, importers and exporters.
- Classification** 3 The 1993 edition of the Standard Industrial Classification of all Economic Activities (SIC), Fifth edition, Report No. 09-90-02 was used to classify the industries in the survey. The SIC is based on the 1990 International Standard Industrial Classification of all Economic Activities (ISIC) with suitable adaptations for local conditions. The Central Product Classification (CPC) Version 1.1, Series M No 77 was used to classify the products in the survey.
- 4 This publication presents information, which measures changes in prices of products, which are produced, imported or exported by establishments.
- Statistical unit** 5 The statistical unit is the establishment (branch), which is the smallest economic unit that functions as a separate entity. Each statistical unit is classified to an industry according to the classification of the products that the unit manufactures, imports or exports.
- Survey methodology and design** 6 Different phases of sampling take place. Firstly, a sample of products, based on the information collected through the Large Sample Survey of 2005 and 2005 information on imports and exports received from SARS is designed and drawn. An indicator product is selected purposively within each product group. To be selected, a product should be part of the top 80% of products manufactured, imported or exported in that product group. Furthermore, it must be possible to obtain price quotations for the relevant product during the whole year. The sample of indicator products is revised every five years at which stage the weights of the indicator products/groups are also revised.
- This survey is collected by mail from an original sample of approximately 2 325 manufacturers, 2 325 exporters and 2 325 importers. The indices are based on producer prices at the point of Producer in the case of commodities produced in South Africa, and “ex-warehouse”, in the case of imported commodities. Prices “delivered” or “free on rail” are accepted if this is the normal basis of quotation.
- Currently, an average of 13 000 price quotations are collected each month from approximately 2 700 outlets by means of 1 500 distinct questionnaires.
- Pricing basis** 7 Price information refers to the first seven days of the relevant month, except in the case of mining and most of the agricultural products, where it refers to the average price for the month. The average price of imported crude petroleum, used in the compilation of the import component of the PPI, is calculated as the value (in Rands) divided by the quantity of imported crude petroleum for the relevant month. **The prices of all items exclude Value Added Tax (VAT).**

Weighting basis

- 8 The index is a fixed weight index as the weights are determined in the base period and they do not change until the next base period. The commodities directly represented in the index, were selected on the basis of the values of sales of products –
- produced during 2005 for locally produced commodities;
 - exported during 2005; and
 - imported during 2005.

These commodities constitute approximately 80 per cent of the total value of Producer/imports/exports during the relevant year as indicated above. Weights were allocated to each product in accordance with the value of sales for each item during the 2004/05 financial year. The basis on which the weighting structure of each main PPI component, indicated in the tables published in this statistical release, was calculated, is indicated in table C.

Table C– Basis on which the weighting structure of each PPI table is based

Number of table in this statistical release	PPI component	Basis for weighting structure
Table 8	Domestic output of South African industry groups	Sales value of South African Producer (Weighted using the National Accounts value added weights)
Table 9	Imported commodities	Sales value of imported commodities
Table 10	Exported commodities	Sales value of exported commodities
Table 11	Materials used in certain industries	Value of materials used

Processing of price information

- 9 The prices that are quoted for the different products are checked. If the price difference between two successive periods is outside the specified range of increase (+5%) or decreases (-5%), the current price levels are confirmed with relevant respondents.

Calculating product price indices

- 10 Price relatives are calculated for each product per respondent by dividing the current prices by the previously quoted price. The price relative for each product is calculated by means of the geometric mean of the price relatives for each respondent. This price relative for each product is then applied to the product index for the previous month in order to obtain a product index for the relevant month.

Calculating group price indices

- 11 Group price indices are calculated by weighting product indices with the relevant product weight, according to each group's (local, import, export) weighting structure, using the Laspeyres index formula.

Contributions of specific products to the total PPI

- 12 The monthly (annual) contribution of a specific product or group of products to the total PPI is calculated by multiplying the weight of this product or group of products with the monthly (annual) change in the index for this product or group of products, divided by the index for 'All groups'.

Price indices for diesel	13	<p>The price index for diesel (Coast and Witwatersrand) is based on the refinery prices of diesel.</p> <p>The retail price index for diesel (metropolitan and other urban areas) is based on retail prices obtained from a sample of 84 retail outlets throughout the country. The diesel indices for the different areas are weighted according to the diesel volume distribution as obtained from the South African Petroleum Industry Association (SAPIA).</p> <p>The retail price index for diesel (metropolitan areas) is based on retail prices obtained from a sample of only 48 outlets in the historical metropolitan areas of the CPI. The diesel indices for the different areas are weighted according to the diesel volume distribution in the relevant areas as obtained from the South African Petroleum Industry Association (SAPIA).</p> <p>The price index for diesel at wholesale level (coast and Witwatersrand) is based on the regulated wholesale prices of diesel.</p>										
Reliability of estimates	14	<p>Inaccuracies may occur because of imperfections in reporting by establishment (branch) and errors made in collection and processing of the data. Inaccuracies of this kind are referred to as non-sampling errors. Every effort is made to reduce non-sampling errors to a minimum by careful designing the questionnaires, editing data and efficient operating procedures.</p>										
Related publications	15	<p>Users may also wish to refer to the following publications, which are available from Stats SA -</p> <ul style="list-style-type: none"> • Bulletin of Statistics; and • SA Statistics. 										
Unpublished statistics	16	<p>In some cases, Stats SA can also make available information, which is not published. This information can be made available in one or more of the following ways: computer printout, diskette or CD. Generally a fee is levied for providing unpublished information.</p>										
Symbols and abbreviations	17	<table border="0"> <tr> <td>Stats SA</td> <td>Statistics South Africa</td> </tr> <tr> <td>..</td> <td>not available</td> </tr> <tr> <td>-</td> <td>nil or not applicable</td> </tr> <tr> <td>*</td> <td>revised since previous publication</td> </tr> <tr> <td>avg</td> <td>average</td> </tr> </table>	Stats SA	Statistics South Africa	..	not available	-	nil or not applicable	*	revised since previous publication	avg	average
Stats SA	Statistics South Africa											
..	not available											
-	nil or not applicable											
*	revised since previous publication											
avg	average											

GLOSSARY

Annual percentage change	The annual percentage change is the change in the index of the relevant month of the current year compared with the index of the same month in the previous year expressed as a percentage and is generally accepted as the yardstick of PPI inflation.
Overall average annual percentage change	The overall average annual percentage change is the change in the average index of one year compared with the average index of the previous year expressed as a percentage.
Contribution of specific products to the total PPI	The monthly (annual) contribution of a specific product or group of products to the total PPI is calculated by multiplying the weight of the index with the monthly annual change of the index divided by the index for "All Items".
Establishment	An establishment (branch) is the smallest economic unit that functions as a separate entity.
Indicator products	Indicator products are those products whose sale values represent 80% of the total value of sales (turnover) in an industrial subgroup.
Monthly percentage change	The monthly percentage change is the change in the index of the relevant month compared to the index of the previous month expressed as a percentage.
Weights	The weights are the relevant importance of the indicator products in that subgroup. The weight of a product is calculated by dividing the actual value of sales of the relevant indicator product by the total value of sales in that subgroup.

FOR MORE INFORMATION

Stats SA publishes approximately 300 different releases each year. It is not economically viable to produce them in more than one of South Africa's eleven official languages. Since the releases are used extensively, not only locally but also by international economic and social-scientific communities, Stats SA releases are published in English only.

Stats SA has copyright on this publication. Users may apply the information as they wish, provided that they acknowledge Stats SA as the source of the basic data wherever they process, apply, utilise, publish or distribute the data; and also that they specify that the relevant application and analysis (where applicable) result from their own processing of data.

Advance release calendar

An advance release calendar is disseminated on www.statssa.gov.za

Stats SA products

A complete set of Stats SA publications is available at the Stats SA Library and the following libraries -

National Library of South Africa, Pretoria Division
National Library of South Africa, Cape Town Division
Natal Society Library, Pietermaritzburg
Library of Parliament, Cape Town
Bloemfontein Public Library
Johannesburg Public Library
Eastern Cape Library Services, King William's Town
Central Regional Library, Polokwane
Central Reference Library, Nelspruit
Central Reference Collection, Kimberley
Central Reference Library, Mmabatho

Stats SA also provides a subscription service.

Electronic services

A large range of data are available via on-line services, diskette and computer printouts. For more details about our electronic data services, contact (012) 310 8600/8390/8351/4892/8496/8095.

You can visit us on the Internet at: www.statssa.gov.za

Enquiries

Technical enquiries: Hlabi Morudu
(012) 310 8377

For media enquiries contact:
Mr T Oosterwyk, Manager, at (012) 310-8130 or 082-908-9104

Telephone number: (012) 310 6917/8137/8377 (survey area)
(012) 310 8600/8390/8351/4892/8496/8095 (user information services)
(012) 310 8161 (orders)
(012) 310 8490 (library)

Fax number: (012) 321 3220/6

email: ppi@statssa.gov.za (technical enquiries)
info@statssa.gov.za (user information services)
distribution@statssa.gov.za (orders)

Postal address: Private Bag X 44, Pretoria, 0001

Produced by Stats SA