

Production Price Index (PPI)

January 2001

Co-operation between Statistics South Africa (Stats SA), the citizens of the country, the private sector and government institutions is essential for a successful statistical system. Without continued co-operation and goodwill, the timely release of relevant and reliable official statistics will not be possible.

Stats SA publishes approximately three hundred different releases each year. It is not economically viable to produce them in more than one of South Africa's eleven official languages. Since the releases are used extensively, not only locally, but also by international economic and social-scientific communities, Stats SA releases are published in English only.

This data in this statistical release adheres to the Special Data Dissemination Standard (SDDS) of the International Monetary Fund (IMF), which sets out standards on coverage, periodicity and timeliness of data; access by the public; integrity; and quality of the disseminated data.

Embargo: 11:30
Date: 28 February 2001

Base : June 1995 = 100

Production Price Index components	Indices			Percentage change between		
	Jan 2000	Dec 2000	Jan 2001	Dec 2000 and Jan 2001		Jan 2000 and Jan 2001
				Actual %	Seasonally adjusted %	Actual %
All commodities for consumption in South Africa	130,9	142,3	143,0	+0,5	+0,4	+9,2
Locally produced commodities	130,2	139,3	140,2	+0,6	+0,4	+7,7
Imported commodities	132,1	149,4	149,5	+0,1	+0,7	+13,2
Output of South African industry						
Total output	131,7	141,4	142,0	+0,4	+0,4	+7,8
For South African consumption	130,2	139,3	140,2	+0,6	+0,4	+7,7

KEY FINDINGS AS AT JANUARY 2001

Annual percentage change in the PPI for January 2001 lower at 9,2%

The Production Price Index (PPI) for all commodities for South African consumption shows an annual rate of increase of 9,2% at January 2001. This rate is 0,8 of a percentage point lower than the corresponding annual rate of 10,0% at December 2000 (cf. table 1), mainly due to lower rates of increase reflected at January 2001 in the price indices for mining and quarrying (+24,2%) and products of petroleum and coal (+33,2%) than the rates of increase reflected at December 2000 in the price indices for mining and quarrying (+35,0%) and products of petroleum and coal (+39,9%). From December 2000 to January 2001 this index increased by 0,5% and the seasonally adjusted index increased by 0,4%.

The annual increase of 9,2% in the PPI for all commodities for South African consumption is due to annual increases in the price indices for locally produced commodities (+5,6 percentage points) and imported commodities (+3,6 percentage points). Both components increased at a lower rate at January 2001 than December 2000 (cf. table 2).

Annual percentage change in the PPI for locally produced commodities for consumption in South Africa lower at 7,7%

The annual rate of increase in the PPI for locally produced commodities for consumption in South Africa is 7,7% at January 2001, which is 0,2 of a percentage point lower than the corresponding annual rate of 7,9% at December 2000 (cf. table 1). From December 2000 to January 2001 this index increased by 0,6% and the seasonally adjusted index increased by 0,4%.

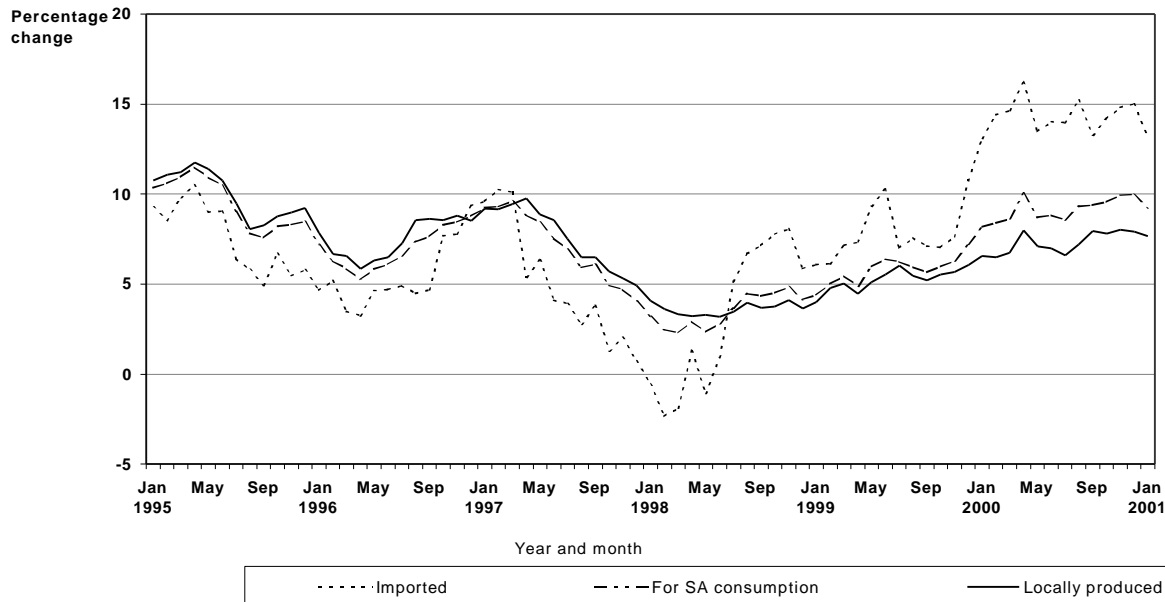
The annual increase of 7,7% in the PPI for locally produced commodities for consumption in South Africa is mainly due to annual increases in the price indices for products of petroleum and coal (+1,7 percentage points, mainly due to annual increases of approximately 43% in the average prices of petrol and diesel), paper, paper products and printing (+0,9 of a percentage point), transport equipment (+0,6 of a percentage point), chemicals and chemical products (+0,6 of a percentage point), basic metals (+0,5 of a percentage point), food at manufacturing (+0,4 of a percentage point), mining and quarrying products (+0,4 of a percentage point), agricultural products (+0,4 of a percentage point), beverages (+0,3 of a percentage point) and tobacco products (+0,3 of a percentage point). These increases were slightly counteracted by an annual decrease in the price index for "all other groups" (-0,1 of a percentage point) (cf. table 6).

Annual rate of change in the PPI for imported commodities lower at 13,2%

The PPI for imported commodities shows an annual rate of increase of 13,2% at January 2001. This rate is 1,8 percentage points lower than the corresponding annual rate of 15,0% at December 2000 (cf. table 1). From December 2000 to January 2001 this index increased by 0,1% and the seasonally adjusted index increased by 0,7%.

The annual increase of 13,2% in the PPI for imported commodities is mainly due to an annual increase in the price index for mining and quarrying products (+5,8 percentage points, mainly due to an annual increase of 35,0% in the average price of imported crude petroleum), and to a lesser extent due to annual increases in the price indices for transport equipment (+2,3 percentage points), chemicals and chemical products (+1,7 percentage points), non-electrical machinery and equipment (+0,8 of a percentage point), food at manufacturing (+0,6 of a percentage point), office, accounting and computing machinery (+0,4 of a percentage point), medical, precision and optical instruments (+0,3 of a percentage point), agricultural products (+0,3 of a percentage point), paper, paper products and printing (+0,3 of a percentage point), metal products (+0,3 of a percentage point), radio, television and communication equipment and apparatus (+0,2 of a percentage point) and basic metals (+0,2 of a percentage point). These increases were partially counteracted

**Figure 1 – Annual percentage change in the Production Price Index:
Commodities for South African consumption**



Source: Stats SA

Contributions to monthly changes

PPI for all commodities for South African consumption

The monthly increase of 0,5% in the PPI for all commodities for South African consumption is due to monthly increases in the price indices for locally produced commodities (+0,4 of a percentage point) and for imported commodities (+0,1 of a percentage point) (cf. table 3).

PPI for locally produced commodities for consumption in South Africa

The monthly increase of 0,6% in the PPI for locally produced commodities for consumption in South Africa is due to monthly increases in the price indices for paper, paper products and printing (+0,2 of a percentage point), electricity (+0,2 of a percentage point), agricultural products (+0,1 of a percentage point), chemicals and chemical products (+0,1 of a percentage point), rubber and plastic products (+0,1 of a percentage point) and beverages (+0,1 of a percentage point). These increases were partially counteracted by a monthly decrease in the price index for products of petroleum and coal (-0,2 of a percentage point) (cf. table 7).

PPI for imported commodities

The monthly increase of 0,1% in the PPI for imported commodities is mainly due to monthly increases in the price indices for chemicals and chemical products (+0,3 of a percentage point), transport equipment (+0,2 of a percentage point), radio, television and communication equipment and apparatus (+0,1 of a percentage point), agricultural products (+0,1 of a percentage point), non-electrical machinery and equipment (+0,1 of a percentage point), food at manufacturing (+0,1 of a percentage point) and "all other groups" (+0,1 of a percentage point). These increases were almost counteracted by a monthly decrease in the price index for mining and quarrying products (-0,9 percentage points, mainly due to a monthly decrease of 4,3% in the average price of imported crude petroleum) (cf. table 9).

Monthly changes in the PPI for all commodities for South African consumption

Relatively large monthly increases occurred in the price indices for electricity (+5,0%), chemicals and chemical products (+2,0%), beverages (+1,8%), fishing (+1,6%), rubber and plastic products (+1,6%), paper, paper products and printing (+1,5%), wood and wood products (+1,4%), agricultural products (+1,2%), tobacco products (+1,1%), leather and leather products (+1,1%), non-metallic mineral products (+1,1%), radio, television and communication equipment and apparatus (+0,8%), transport equipment (+0,7%) and medical, precision and optical instruments (+0,5%). These increases were partially counteracted by monthly decreases in the price indices for products of petroleum and coal (-3,4%), mining and quarrying products (-2,7%), gas, steam and water (-1,3%) and office, accounting and computing machinery (-0,1%) (cf. table 10)

Monthly changes in the PPI for imported commodities

Relatively large monthly increases occurred in the price indices for agricultural products (+5,3%), food at manufacturing (+2,5%), chemicals and chemical products (+2,5%), radio, television and communication equipment and apparatus (+1,5%), transport equipment (+1,4%), leather and leather products (+0,8%) and non-metallic mineral products (+0,6%). These increases were partially counteracted by monthly decreases in the price indices for mining and quarrying products (-4,0%, mainly due to a monthly decrease of 4,3% in the average price of imported crude petroleum), paper, paper products and printing (-0,1%) and office, accounting and computing machinery (-0,1%) (cf. table 13).

Monthly changes in the PPI for exported commodities

From December 2000 to January 2001, the PPI for exported commodities decreased by 0,1%. A relatively large monthly decrease occurred in the price index for exported products of petroleum and coal (-18,2%) and a smaller monthly decrease in the price index for basic metals (-0,1%). These decreases were partially counteracted by monthly increases in the price indices for agricultural products (+4,2%), footwear (+2,6%), rubber and plastic products (+2,0%), medical, precision and optical instruments (+1,8%), chemicals and chemical products (+1,1%), food at manufacturing (+1,1%), mining and quarrying products (+0,8%) and wood and wood products (+0,8%) (cf. table 14).

PP
P J Lehohla
Statistician General: Statistics South Africa

Contents	Page
Notes	5
Tables	
Table 1 The Production Price Index (PPI) and the annual percentage change in the PPI on a monthly basis	7
Table 2 Contributions to the annual percentage change in the PPI for all commodities for consumption in South Africa according to their origin	7
Table 3 Contributions to the monthly percentage change in the PPI for all commodities for consumption in South Africa according to their origin	7
Table 4 Contributions to the annual percentage change in the PPI for all commodities for consumption in South Africa according to group	8
Table 5 Contributions to the monthly percentage change in the PPI for all commodities for consumption in South Africa according to group	8
Table 6 Contributions to the annual percentage change in the PPI for locally produced commodities for South African consumption according to group	9
Table 7 Contributions to the monthly percentage change in the PPI for locally produced commodities for South African consumption according to group	9
Table 8 Contributions to the annual percentage change in the PPI for imported commodities according to group	10
Table 9 Contributions to the monthly percentage change in the PPI for imported commodities according to group	10
Table 10 PPI for consumption in South Africa and percentage change according to origin and group	11
Table 11 PPI for total output of South African industry groups and percentage change according to destination and group	13
Table 12 PPI for output of South African industry groups for South African consumption and percentage change according to group	15
Table 13 PPI for imported commodities and percentage change according to group	17
Table 14 PPI for exported commodities and percentage change according to group	19
Table 15 PPI and percentage change for materials used in certain industries	21
Table 16 PPI and percentage change for selected materials	21
Table 17 Seasonally adjusted PPI	23
Additional information	
Explanatory notes	24
Glossary	27
For more information	28

Forthcoming issues	Issue	Expected date of publication
	February 2001	28 March 2001
	March 2001	25 April 2001
	April 2001	23 May 2001
	May 2001	27 June 2001
	June 2001	25 July 2001
	July 2001	22 August 2001

Purpose of the survey

The Surveys of Prices of Locally Produced commodities (which are locally sold or exported) and Imported Commodities are monthly surveys covering samples of manufacturers, exporters and importers operating in the South African economy. The results of the survey are used to compile the Production Price Index (PPI), an economic indicator, which indicates the changes in production prices of locally produced commodities (which are locally sold or exported) and imported commodities. These statistics are used by the private sector in the analysis of comparative business and industry performance, as well as for contract price adjustments.

Methodological notes

According to international best practice, the PPI is reweighted every five years. Stats SA reweighted the PPI as from June 1999 using a new basket of indicator products and their relevant weights.

The new baskets of indicator products manufactured and sold locally, exported and imported were compiled through various information sources. The information sources used to select the relevant indicator products in the different production industries are indicated in table B.

Table B – Information sources used to select products in the different production industries

Main products and industries	Sources
Locally produced and sold items	
Agriculture	Department of Agriculture
Fishing	Fishing Handbook, 1996
Forestry	Commercial Timber Resources and Roundwood Processing in South Africa, 1996
Mining and quarrying	Department of Minerals and Energy Affairs
Manufacturing	Stats SA, Census of Manufacturing, 1996
Electricity, gas and steam	Stats SA, Census of Electricity, Gas and Steam, 1995
Water	Department of Water Affairs and Forestry
Imported items	South African Revenue Services
Exported items	South African Revenue Services

The products were classified according to the relevant Standard Industrial Classification (SIC) subgroups. The products in each subgroup were then sorted according to their value of sales. The products contributing to the top 80% of the sales in each subgroup were selected as indicator products. These are the products for which prices will be monitored periodically by Stats SA.

The questionnaire(s) for each subgroup, which are used to collect the relevant price information from respondents, were adjusted to include the newly selected indicator products. Although the products on each questionnaire differ from the other questionnaires, their layout is identical.

For each indicator product a sample of manufacturers, importers and exporters was drawn from all the manufacturers, importers and exporters who manufacture, import or export the specific indicator product. The list of manufacturers, importers and exporters (sampling frame), from which the samples were drawn, are indicated in table C.

Table C– Sampling frame

Main products and industries	Sources
Locally produced and sold products	
Agriculture	List of fresh produce markets
Mining and quarrying	List of mines
Forestry	List obtained from Department of Agriculture Old sample of PPI
Fishing	Old sample of PPI List obtained from other sources
Manufacturing	List of manufacturers from the Census of Manufacturing, 1996 List of manufactures from trade unions
Electricity, gas and steam	List of producers according to the Census Of Electricity, Gas and Steam, 1995
Water	Old sample of PPI.
Imported products	List of importers obtained from South African Revenue Services
Exported items	List of exporters obtained from South African Revenue Services

Year		Jan.	Feb.	Mar.	Apr.	May	Jun.	Jul.	Aug.	Sep.	Oct.	Nov.	Dec.	Avg.
Commodities for consumption in South African														
1999	Index	121,0	121,4	121,8	122,3	124,0	124,8	125,9	126,6	126,8	127,6	128,7	129,4	125,0
	%	+4,4	+5,0	+5,5	+4,9	+6,0	+6,4	+6,2	+5,9	+5,7	+6,0	+6,3	+7,2	+5,8
2000	Index	130,9	131,6	132,3	134,6	134,8	135,8	136,7	138,4	138,7	139,8	141,5	142,3	136,5
	%	+8,2	+8,4	+8,6	+10,1	+8,7	+8,8	+8,6	+9,3	+9,4	+9,6	+9,9	+10,0	+9,2
2001	Index	143,0
	%	+9,2

Locally produced commodities

1999	Index	122,2	123,0	123,2	123,9	125,3	125,9	127,0	127,5	127,3	127,9	128,7	129,1	125,9
	%	+4,0	+4,8	+5,0	+4,5	+5,1	+5,5	+6,0	+5,5	+5,2	+5,5	+5,7	+6,1	+5,3
2000	Index	130,2	131,0	131,5	133,8	134,2	134,7	135,4	136,7	137,4	137,9	139,0	139,3	135,1
	%	+6,5	+6,5	+6,7	+8,0	+7,1	+7,0	+6,6	+7,2	+7,9	+7,8	+8,0	+7,9	+7,3
2001	Index	140,2
	%	+7,7

Imported commodities

1999	Index	116,8	115,9	116,8	117,0	119,5	121,3	122,4	123,6	125,0	126,2	128,3	129,9	121,9
	%	+6,1	+6,1	+7,2	+7,3	+9,3	+10,3	+7,0	+7,6	+7,1	+7,0	+7,6	+10,7	+7,8
2000	Index	132,1	132,6	133,9	136,0	135,6	138,3	139,5	142,4	141,6	144,1	147,3	149,4	139,4
	%	+13,1	+14,4	+14,6	+16,2	+13,5	+14,0	+14,0	+15,2	+13,3	+14,2	+14,8	+15,0	+14,4
2001	Index	149,5
	%	+13,2

Table 2 - Contributions to the annual percentage change in the PPI for all commodities for consumption in South Africa according to their origin

Origin of contribution	Contribution at December 2000	Contribution at January 2001
Locally produced commodities	+5,9	+5,6
Imported commodities	+4,1	+3,6
All groups	+10,0	+9,2

Table 3 - Contributors to the monthly percentage change in the PPI for all commodities for consumption in South Africa according to their origin

Origin of contribution	Contribution at December 2000	Contribution at January 2001
Locally produced commodities	+0,2	+0,4
Imported commodities	+0,4	+0,1
All groups	+0,6	+0,5

Table 4 - Contributions to the annual percentage change in the PPI for all commodities for consumption in South Africa according to group

Group	Contribution at December 2000	Contribution at January 2001
Agriculture	+0,3	+0,4
Mining and quarrying	+2,6	+1,9
Food at manufacturing	+0,5	+0,4
Beverages	+0,2	+0,2
Tobacco products	+0,3	+0,2
Textiles and made-up goods	+0,1	+0,1
Wearing apparel	+0,1	+0,1
Wood and wood products	+0,1	+0,1
Paper, paper products and printing	+0,7	+0,7
Products of petroleum and coal	+1,5	+1,2
Chemicals and chemical products	+0,8	+0,9
Rubber and plastic products	+0,2	+0,2
Non-metallic mineral products	+0,2	+0,2
Basic metals	+0,4	+0,4
Metal products	+0,1	+0,1
Non-electrical machinery and equipment	+0,2	+0,2
Office, accounting and computing machinery	+0,1	+0,1
Electrical machinery and apparatus	+0,2	+0,2
Radio, TV, communication equipment and apparatus	+0,1	+0,1
Medical, precision and optical instruments	+0,1	+0,1
Transport equipment	+1,0	+1,1
Other manufactures	+0,1	+0,1
Electricity	+0,1	+0,1
All other groups	0,0	+0,1
All groups	+10,0	+9,2

Table 5 - Contributions to the monthly percentage change in the PPI for all commodities for consumption in South Africa according to group

Group	Contribution at December 2000	Contribution at January 2001
Agriculture	+0,3	+0,1
Mining and quarrying	+0,1	-0,2
Food at manufacturing	+0,1	0,0
Beverages	0,0	+0,1
Paper, paper products and printing	+0,1	+0,1
Products of petroleum and coal	-0,1	-0,2
Chemicals and chemical products	0,0	+0,2
Transport equipment	+0,2	+0,1
Electricity	-0,1	+0,2
All other groups	0,0	+0,1
All groups	+0,6	+0,5

Table 6 - Contributors to the annual percentage change in the PPI for locally produced commodities according to group

Group	Contribution at December 2000	Contribution at January 2001
Agriculture	+0,4	+0,4
Mining and quarrying	+0,4	+0,4
Food at manufacturing	+0,5	+0,4
Beverages	+0,2	+0,3
Tobacco products	+0,4	+0,3
Textiles and made-up goods	+0,1	+0,1
Wearing apparel	+0,2	+0,1
Wood and wood products	+0,1	+0,1
Paper, paper products and printing	+0,9	+0,9
Products of petroleum and coal	+2,0	+1,7
Chemicals and chemical products	+0,5	+0,6
Rubber and plastic products	+0,2	+0,2
Non-metallic mineral products	+0,2	+0,2
Basic metals	+0,5	+0,5
Metal products	+0,1	+0,1
Non-electrical machinery and equipment	+0,1	+0,1
Electrical machinery and apparatus	+0,2	+0,2
Radio, TV, communication equipment and apparatus	+0,1	+0,1
Transport equipment	+0,6	+0,6
Furniture	0,0	+0,1
Other manufactures	+0,1	+0,1
Electricity	+0,2	+0,2
Gas and water	+0,1	+0,1
All other groups	-0,2	-0,1
All groups	+7,9	+7,7

Table 7 - Contributors to the monthly percentage change in the PPI for locally produced commodities according to group

Group	Contribution at December 2000	Contribution at January 2001
Agriculture	+0,4	+0,1
Food at manufacturing	+0,1	0,0
Beverages	0,0	+0,1
Paper, paper products and printing	0,0	+0,2
Products of petroleum and coal	-0,1	-0,2
Chemicals and chemical products	0,0	+0,1
Rubber and plastic products	0,0	+0,1
Electricity	-0,2	+0,2
All groups	+0,2	+0,6

Table 8 - Contributors to the annual percentage change in the PPI for imported commodities according to group

Group	Contribution at December 2000	Contribution at January 2001
Agriculture	+0,3	+0,3
Mining and quarrying	+8,5	+5,8
Food at manufacturing	+0,5	+0,6
Textiles and made-up goods	+0,1	+0,1
Leather and leather products	+0,1	+0,1
Paper, paper products and printing	+0,4	+0,3
Chemicals and chemical products	+1,4	+1,7
Basic metals	+0,2	+0,2
Metal products	+0,3	+0,3
Non-electrical machinery and equipment	+0,7	+0,8
Office, accounting and computing machinery	+0,4	+0,4
Electrical machinery and apparatus	+0,1	+0,1
Radio, TV, communication equipment and apparatus	+0,1	+0,2
Medical, precision and optical instruments	+0,3	+0,3
Transport equipment	+2,0	+2,3
Other manufactures	+0,1	+0,1
All other groups	-0,5	-0,4
All groups	+15,0	+13,2

Table 9 - Contributors to the monthly percentage change in the PPI for imported commodities according to group

Group	Contribution at December 2000	Contribution at January 2001
Agriculture	0,0	+0,1
Mining and quarrying	+0,3	-0,9
Food at manufacturing	+0,1	+0,1
Paper, paper products and printing	+0,1	0,0
Chemicals and chemical products	+0,1	+0,3
Metal products	+0,1	0,0
Non-electrical machinery and equipment	+0,1	+0,1
Radio, TV, communication equipment and apparatus	0,0	+0,1
Transport equipment	+0,6	+0,2
All other groups	0,0	+0,1
All groups	+1,4	+0,1

Table 10 - Production Price Index for consumption in South Africa according to origin and group

Base : June 1995 = 100

Origin/Group	Weight	Indices			% change between	
		Jan 2000	Dec 2000	Jan 2001	Dec 2000 and Jan 2001	Jan 2000 and Jan 2001
All groups	100,00	130,9	142,3	143,0	+0,5	+9,2
South African	73,00	130,2	139,3	140,2	+0,6	+7,7
Imported	27,00	132,1	149,4	149,5	+0,1	+13,2
1. Agriculture, Forestry, Fishing and Mining	15,22	143,9	165,3	163,8	-0,9	+13,8
1.1 Agriculture	7,68	122,7	127,9	129,4	+1,2	+5,5
1.1.1 Food	7,34	122,5	126,2	126,6	+0,3	+3,3
Grain	1,51	143,0	132,0	142,9	+8,3	-0,1
Sugar cane	0,38	109,0	118,1	121,0	+2,5	+11,0
Oil seeds	0,18	98,1	112,3	123,1	+9,6	+25,5
Vegetables and dried beans	0,68	129,5	127,2	120,1	-5,6	-7,3
Fruit	0,68	85,7	96,9	92,0	-5,1	+7,4
Meat	2,37	129,5	138,7	136,7	-1,4	+5,6
Milk and eggs	0,96	127,2	133,9	133,4	-0,4	+4,9
Other	0,58	79,9	75,5	75,5	0,0	-5,5
1.1.2 Other agriculture	0,34	125,7	154,9	173,6	+12,1	+38,1
1.2 Forestry	1,97	105,1	105,1	105,1	0,0	0,0
1.3 Fishing	0,12	140,2	153,1	155,6	+1,6	+11,0
1.4 Mining and quarrying	5,45	185,7	237,1	230,7	-2,7	+24,2
Coal	1,59	147,7	163,5	162,3	-0,7	+9,9
Metal ores	0,68	121,6	138,9	140,0	+0,8	+15,1
Other minerals	3,18	216,8	291,8	281,4	-3,6	+29,8
2. Manufacturing	80,28	129,4	139,6	140,4	+0,6	+8,5
South African	56,60	132,3	142,6	143,2	+0,4	+8,2
Imported	23,68	123,7	133,5	134,9	+1,0	+9,1
2.1 Food	10,16	137,5	142,8	143,2	+0,3	+4,1
Meat	1,79	128,0	131,7	129,1	-2,0	+0,9
Fresh meat	1,43	127,5	130,8	127,4	-2,6	-0,1
Meat products	0,36	124,9	130,9	132,1	+0,9	+5,8
Fish and fish products	0,19	141,9	161,7	167,8	+3,8	+18,3
Fruit and vegetable products	0,47	140,0	145,7	145,9	+0,1	+4,2
Fats and oils	0,84	126,7	127,7	127,7	0,0	+0,8
Milk products	1,31	132,8	145,0	147,3	+1,6	+10,9
Grain mill products	1,82	139,6	143,8	144,8	+0,7	+3,7
Sugar	0,35	129,2	134,9	134,9	0,0	+4,4
Coffee and tea	0,23	138,9	143,5	143,8	+0,2	+3,5
Other	3,16	145,5	149,5	150,5	+0,7	+3,4
2.2 Beverages	3,26	135,5	140,4	142,9	+1,8	+5,5
Alcoholic	2,35	134,8	139,8	142,6	+2,0	+5,8
Non-alcoholic	0,91	139,3	144,2	145,8	+1,1	+4,7
2.3 Tobacco products	1,15	159,7	184,1	186,2	+1,1	+16,6
2.4 Textiles and made-up goods	2,39	118,1	122,4	122,4	0,0	+3,6
Spinning, weaving and finishing of textiles	1,43	117,9	120,9	121,0	+0,1	+2,6
Other textiles	0,96	118,5	124,7	124,7	0,0	+5,2
2.5 Wearing apparel	1,81	125,8	132,4	132,4	0,0	+5,2
Knitted and crocheted fabrics and articles	0,42	122,1	124,5	124,5	0,0	+2,0
Wearing apparel	1,39	127,1	135,0	135,0	0,0	+6,2
Men's and boys' clothing	0,56	120,8	124,2	124,2	0,0	+2,8
Women's and girls' clothing	0,78	132,0	142,6	142,6	0,0	+8,0
Other, including articles of fur	0,05	125,1	142,3	142,3	0,0	+13,7
2.6 Leather and leather products	0,29	124,9	134,1	135,6	+1,1	+8,6
2.7 Footwear	0,69	131,9	134,3	134,5	+0,1	+2,0
2.8 Wood and wood products	1,26	126,4	132,9	134,8	+1,4	+6,6
Sawmilling and planing of wood	0,44	126,0	128,5	128,6	+0,1	+2,1
Products of wood, cork and plaiting materials	0,82	127,0	135,6	138,5	+2,1	+9,1
2.9 Paper, paper products and printing	8,13	136,3	145,8	148,0	+1,5	+8,6
Paper and paper products	3,21	136,4	147,8	148,5	+0,5	+8,9
Publishing and printing	4,92	137,8	146,2	149,5	+2,3	+8,5
2.10 Products of petroleum and coal	2,75	174,9	241,2	233,0	-3,4	+33,2
2.11 Chemicals and chemical products	8,39	130,5	141,5	144,3	+2,0	+10,6
Basic chemicals	3,54	135,4	151,3	155,0	+2,4	+14,5
Fertilizers	0,45	126,9	130,3	136,3	+4,6	+7,4
Other	3,09	136,2	154,3	157,6	+2,1	+15,7
Other chemical products	4,85	127,7	135,2	137,4	+1,6	+7,6
Pharmaceutical products	1,47	129,4	134,0	138,0	+3,0	+6,6
Other	3,38	125,2	134,0	135,2	+0,9	+8,0

Table 10 - Production Price Index for consumption in South Africa according to origin and group (concluded)

Base : June 1995 = 100

Origin/Group	Weight	Indices			% -change between	
		Jan 2000	Dec 2000	Jan 2001	Dec 2000 and Jan 2001	Jan 2000 and Jan 2001
2.12 Rubber and plastic products	2,71	133,2	139,9	142,2	+1,6	+6,8
Rubber products	0,85	127,5	135,2	137,7	+1,8	+8,0
Plastic products	1,86	136,2	142,5	144,7	+1,5	+6,2
2.13 Non-metallic mineral products	2,25	131,0	139,7	141,3	+1,1	+7,9
Glass and glass products	0,61	113,2	116,4	116,5	+0,1	+2,9
Other	1,64	135,2	145,8	147,8	+1,4	+9,3
2.14 Basic metals	3,97	124,5	137,9	138,1	+0,1	+10,9
Ferrous	1,82	125,9	130,6	130,7	+0,1	+3,8
Non-ferrous	2,15	117,3	137,3	137,5	+0,1	+17,2
2.15 Metal products	3,18	131,0	136,4	136,5	+0,1	+4,2
Structural metal products	1,00	123,9	128,0	128,1	+0,1	+3,4
Other	2,18	135,8	141,8	141,9	+0,1	+4,5
2.16 Non-electrical machinery and equipment	6,72	117,9	121,5	121,7	+0,2	+3,2
General purpose machinery	2,44	108,2	112,6	113,0	+0,4	+4,4
Special purpose machinery	3,69	123,7	128,6	128,9	+0,2	+4,2
Household appliances	0,59	106,9	113,4	114,0	+0,5	+6,6
2.17 Office, accounting and computing machinery	1,41	126,6	136,8	136,7	-0,1	+8,0
2.18 Electrical machinery and apparatus	2,48	118,6	127,8	128,0	+0,2	+7,9
Electric motors, generators and transformers	0,34	119,2	122,5	122,5	0,0	+2,8
Electricity distribution and control apparatus	0,75	116,7	120,3	120,1	-0,2	+2,9
Insulated wire and cable	0,69	111,4	124,8	125,1	+0,2	+12,3
Other	0,70	127,8	141,0	141,3	+0,2	+10,6
2.19 Radio, television and communication equipment and apparatus	2,70	110,6	115,0	115,9	+0,8	+4,8
2.20 Medical, precision and optical instruments	1,18	133,7	142,3	143,0	+0,5	+7,0
Medical appliances and instruments for measuring, checking, testing and navigating	0,99	135,3	144,5	145,1	+0,4	+7,2
Other, including watches and clocks	0,19	127,9	133,7	134,9	+0,9	+5,5
2.21 Transport equipment	11,04	129,2	141,3	142,3	+0,7	+10,1
Motor vehicles, parts and accessories	10,50	132,6	145,4	146,5	+0,8	+10,5
Motor vehicles	5,43	119,8	130,3	130,3	0,0	+8,8
Bodies, trailers and semi-trailers	0,16	122,6	135,3	136,2	+0,7	+11,1
Parts and accessories	4,91	166,9	184,1	186,5	+1,3	+11,7
Other transport equipment	0,54	103,5	106,1	106,2	+0,1	+2,6
2.22 Furniture	1,01	134,7	139,1	139,1	0,0	+3,3
2.23 Other manufactures	1,35	103,7	110,0	110,0	0,0	+6,1
3. Electricity, Gas Steam and Water	4,50	120,9	121,6	126,9	+4,4	+5,0
3.1 Electricity	4,17	114,9	114,0	119,7	+5,0	+4,2
3.2 Gas, Steam and water	0,33	161,0	184,2	181,8	-1,3	+12,9

Table 11 - Production Price Index for total output of South African industry groups according to destination and group

Base : June 1995 = 100

Origin/Group	Weight	Indices			% change between	
		Jan 2000	Dec 2000	Jan 2001	Dec 2000 and Jan 2001	Jan 2000 and Jan 2001
All groups	100,00	131,7	141,4	142,0	+0,4	+7,8
South African	75,88	131,7	141,4	142,0	+0,4	+7,8
Exported	24,12	128,0	138,9	138,7	-0,1	+8,4
1. Agriculture, Forestry, Fishing and Mining	19,69	135,6	143,5	144,5	+0,7	+6,6
1.1 Agriculture	8,55	122,1	124,1	125,6	+1,2	+2,9
1.1.1 Food	8,35	121,9	122,9	123,4	+0,4	+1,2
Grain	1,70	141,7	123,3	133,9	+8,6	-5,5
Sugar cane	0,40	109,0	118,1	121,0	+2,5	+11,0
Oil seeds	0,18	98,1	112,3	123,1	+9,6	+25,5
Vegetables and dried beans	0,81	128,5	126,5	120,1	-5,1	-6,5
Fruit	1,20	97,7	99,7	95,7	-4,0	-2,0
Meat	2,48	128,6	138,3	136,3	-1,4	+6,0
Milk and eggs	1,00	127,2	133,9	133,4	-0,4	+4,9
Other	0,58	78,0	75,7	75,7	0,0	-2,9
1.1.2 Other agriculture	0,20	126,3	149,4	167,7	+12,2	+32,8
1.2 Forestry	2,06	105,5	105,5	105,5	0,0	0,0
1.3 Fishing	0,16	133,2	146,7	148,7	+1,4	+11,6
1.4 Mining and quarrying	8,92	144,8	159,2	160,1	+0,6	+10,6
Coal	3,22	141,8	164,5	164,7	+0,1	+16,1
Metal ores	3,64	149,8	163,8	165,3	+0,9	+10,3
Other minerals	2,06	134,8	137,8	138,6	+0,6	+2,8
2. Manufacturing	75,63	130,4	141,0	141,2	+0,1	+8,3
South African	58,83	130,8	141,1	141,7	+0,4	+8,3
Exported	16,80	123,2	134,6	133,6	-0,7	+8,4
2.1 Food	10,77	136,7	141,5	141,8	+0,2	+3,7
Meat	1,83	127,4	131,4	128,6	-2,1	+0,9
Fresh meat	1,34	127,3	129,8	126,2	-2,8	-0,9
Meat products	0,49	124,8	135,5	136,1	+0,4	+9,1
Fish and fish products	0,24	138,2	141,3	144,3	+2,1	+4,4
Fruit and vegetable products	0,77	137,1	145,3	146,5	+0,8	+6,9
Fats and oils	0,61	124,0	119,9	119,7	-0,2	-3,5
Milk products	1,35	132,6	144,3	146,6	+1,6	+10,6
Grain mill products	1,80	138,7	141,1	141,3	+0,1	+1,9
Sugar	0,70	136,1	144,3	144,0	-0,2	+5,8
Coffee and tea	0,24	138,9	143,4	143,6	+0,1	+3,4
Other	3,23	145,6	149,8	150,7	+0,6	+3,5
2.2 Beverages	3,58	136,5	141,8	144,1	+1,6	+5,6
Alcoholic	2,61	136,3	141,8	144,3	+1,8	+5,9
Non-alcoholic	0,97	138,1	142,8	144,4	+1,1	+4,6
2.3 Tobacco products	1,22	160,8	185,3	187,3	+1,1	+16,5
2.4 Textiles and made-up goods	2,26	120,4	125,6	125,6	0,0	+4,3
Spinning, weaving and finishing of textiles	1,37	120,2	125,8	125,8	0,0	+4,7
Other textiles	0,89	120,8	125,6	125,6	0,0	+4,0
2.5 Wearing apparel	1,83	126,0	132,1	132,1	0,0	+4,8
Knitted and crocheted fabrics and articles	0,38	122,2	124,1	124,1	0,0	+1,6
Wearing apparel	1,45	127,3	134,6	134,6	0,0	+5,7
Men`s and boys` clothing	0,60	120,2	123,5	123,5	0,0	+2,7
Women`s and girls` clothing	0,80	133,3	143,0	143,0	0,0	+7,3
Other, including articles of fur	0,05	126,9	143,7	143,7	0,0	+13,2
2.6 Leather and leather products	0,33	118,9	123,5	124,4	+0,7	+4,6
2.7 Footwear	0,55	133,9	136,9	137,3	+0,3	+2,5
2.8 Wood and wood products	1,20	124,5	131,2	133,1	+1,4	+6,9
Sawmilling and planing of wood	0,36	128,7	133,7	133,7	0,0	+3,9
Products of wood, cork and plaiting materials	0,84	120,6	128,1	131,0	+2,3	+8,6
2.9 Paper, paper products and printing	8,36	133,6	143,0	145,4	+1,7	+8,8
Paper and paper products	3,60	136,3	147,9	148,6	+0,5	+9,0
Publishing and printing	4,76	138,2	146,5	150,2	+2,5	+8,7
2.10 Products of petroleum and coal	3,27	176,7	241,2	226,3	-6,2	+28,1
2.11 Chemicals and chemical products	7,41	127,1	134,3	136,3	+1,5	+7,2
Basic chemicals	3,53	124,0	132,0	133,4	+1,1	+7,6
Fertilizers	0,59	126,4	127,4	131,5	+3,2	+4,0
Other	2,94	126,4	135,7	136,5	+0,6	+8,0
Other chemical products	3,88	132,5	139,2	141,8	+1,9	+7,0
Pharmaceutical products	0,88	141,6	143,7	151,6	+5,5	+7,1
Other	3,00	126,8	134,7	135,7	+0,7	+7,0

Table 11 - Production Price Index for total output of South African industry groups according to destination and group (concluded)

Base : June 1995 = 100

Origin/Group	Weight	Indices			% -change between	
		Jan 2000	Dec 2000	Jan 2001	Dec 2000 and Jan 2001	Jan 2000 and Jan 2001
2.12 Rubber and plastic products	2,48	133,3	141,5	144,4	+2,0	+8,3
Rubber products	0,75	126,8	136,8	140,2	+2,5	+10,6
Plastic products	1,73	136,5	143,9	146,5	+1,8	+7,3
2.13 Non-metallic mineral products	2,11	132,2	141,7	143,3	+1,1	+8,4
Glass and glass products	0,56	114,2	117,4	117,6	+0,2	+3,0
Other	1,55	136,4	147,9	149,9	+1,4	+9,9
2.14 Basic metals	8,68	123,4	142,2	142,1	-0,1	+15,2
Ferrous	4,04	124,4	141,6	141,3	-0,2	+13,6
Non-ferrous	4,64	117,3	136,9	137,0	+0,1	+16,8
2.15 Metal products	3,23	120,9	125,0	125,0	0,0	+3,4
Structural metal products	1,24	127,5	133,8	133,8	0,0	+4,9
Other	1,99	116,1	118,9	118,9	0,0	+2,4
2.16 Non-electrical machinery and equipment	3,57	117,0	122,0	122,2	+0,2	+4,4
General purpose machinery	1,26	119,3	124,5	124,5	0,0	+4,4
Special purpose machinery	1,96	117,6	120,1	120,1	0,0	+2,1
Household appliances	0,35	110,8	116,8	116,8	0,0	+5,4
2.17 Office, accounting and computing machinery	0,14	100,1	100,2	100,2	0,0	+0,1
2.18 Electrical machinery and apparatus	1,90	123,6	134,4	134,4	0,0	+8,7
Electric motors, generators and transformers	0,19	126,0	133,2	133,2	0,0	+5,7
Electricity distribution and control apparatus	0,45	129,1	133,4	133,4	0,0	+3,3
Insulated wire and cable	0,69	111,2	123,4	123,4	0,0	+11,0
Other	0,57	135,1	150,4	150,4	0,0	+11,3
2.19 Radio, television and communication equipment and apparatus	1,34	114,4	119,8	119,8	0,0	+4,7
2.20 Medical, precision and optical instruments	0,32	137,4	141,2	143,9	+1,9	+4,7
Medical appliances and instruments for measuring, checking, testing and navigating	0,28	135,6	138,9	141,6	+1,9	+4,4
Other, including watches and clocks	0,04	146,4	153,1	155,8	+1,8	+6,4
2.21 Transport equipment	8,32	120,7	128,5	128,6	+0,1	+6,5
Motor vehicles, parts and accessories	8,07	121,7	129,8	129,9	+0,1	+6,7
Motor vehicles	5,31	124,0	135,1	135,1	0,0	+9,0
Bodies, trailers and semi-trailers	0,33	122,9	129,1	129,1	0,0	+5,0
Parts and accessories	2,43	113,9	115,9	116,1	+0,2	+1,9
Other transport equipment	0,25	106,6	108,7	108,7	0,0	+2,0
2.22 Furniture	1,39	134,3	137,8	137,8	0,0	+2,6
2.23 Other manufactures	1,37	113,4	118,7	118,7	0,0	+4,7
3. Electricity, Gas Steam and Water	4,68	120,5	121,2	126,5	+4,4	+5,0
3.1 Electricity	4,35	114,6	113,7	119,4	+5,0	+4,2
3.2 Gas, Steam and water	0,33	160,9	184,1	181,7	-1,3	+12,9

Table 12 - Production Price Index for output of South African industry groups for South African consumption according to group

Base : June 1995 = 100

Origin/Group	Weight	Indices			% change between	
		Jan 2000	Dec 2000	Jan 2001	Dec 2000 and Jan 2001	Jan 2000 and Jan 2001
All groups	100,00	130,2	139,3	140,2	+0,6	+7,7
South African	100,00	130,2	139,3	140,2	+0,6	+7,7
Exported	-	-	-	-	-	-
1. Agriculture, Forestry, Fishing and Mining	16,29	125,4	131,7	132,4	+0,5	+5,6
1.1 Agriculture	9,67	123,8	128,4	129,5	+0,9	+4,6
1.1.1 Food	9,44	123,0	126,6	126,7	+0,1	+3,0
Grain	1,59	146,7	129,8	141,3	+8,9	-3,7
Sugar cane	0,52	109,0	118,1	121,0	+2,5	+11,0
Oil seeds	0,24	98,1	112,3	123,1	+9,6	+25,5
Vegetables and dried beans	0,93	129,7	127,4	120,3	-5,6	-7,2
Fruit	0,91	85,6	96,9	91,8	-5,3	+7,2
Meat	3,23	129,5	138,6	136,6	-1,4	+5,5
Milk and eggs	1,32	127,2	133,9	133,4	-0,4	+4,9
Other	0,70	77,6	75,3	75,3	0,0	-3,0
1.1.2 Other agriculture	0,23	140,5	168,8	192,4	+14,0	+36,9
1.2 Forestry	2,67	105,6	105,6	105,6	0,0	0,0
1.3 Fishing	0,16	143,5	157,0	159,6	+1,7	+11,2
1.4 Mining and quarrying	3,79	136,5	151,0	151,1	+0,1	+10,7
Coal	2,09	148,5	164,9	163,7	-0,7	+10,2
Metal ores	0,88	123,2	141,5	142,6	+0,8	+15,7
Other minerals	0,82	127,8	134,6	136,7	+1,6	+7,0
2. Manufacturing	77,54	132,3	142,6	143,2	+0,4	+8,2
South African	77,54	132,3	142,6	143,2	+0,4	+8,2
Exported	-	-	-	-	-	-
2.1 Food	12,44	137,7	142,1	142,2	+0,1	+3,3
Meat	2,20	128,7	131,9	128,8	-2,4	+0,1
Fresh meat	1,85	128,4	131,0	127,3	-2,8	-0,9
Meat products	0,35	124,7	130,4	130,7	+0,2	+4,8
Fish and fish products	0,10	140,7	146,7	149,3	+1,8	+6,1
Fruit and vegetable products	0,57	140,6	146,8	147,0	+0,1	+4,6
Fats and oils	0,72	126,2	121,6	121,4	-0,2	-3,8
Milk products	1,72	132,6	144,4	146,8	+1,7	+10,7
Grain mill products	2,25	139,0	141,4	141,6	+0,1	+1,9
Sugar	0,48	130,0	135,7	135,7	0,0	+4,4
Coffee and tea	0,31	139,3	143,9	144,1	+0,1	+3,4
Other	4,09	146,1	150,2	151,2	+0,7	+3,5
2.2 Beverages	4,21	137,0	142,0	144,6	+1,8	+5,5
Alcoholic	2,98	136,6	141,7	144,7	+2,1	+5,9
Non-alcoholic	1,23	139,4	144,3	145,9	+1,1	+4,7
2.3 Tobacco products	1,55	160,9	185,7	187,8	+1,1	+16,7
2.4 Textiles and made-up goods	2,52	121,5	124,9	124,9	0,0	+2,8
Spinning, weaving and finishing of textiles	1,49	121,5	123,7	123,7	0,0	+1,8
Other textiles	1,03	121,6	126,7	126,7	0,0	+4,2
2.5 Wearing apparel	2,19	127,0	133,6	133,6	0,0	+5,2
Knitted and crocheted fabrics and articles	0,46	122,3	124,3	124,3	0,0	+1,6
Wearing apparel	1,73	128,3	136,2	136,2	0,0	+6,2
Men's and boys' clothing	0,67	120,5	124,1	124,1	0,0	+3,0
Women's and girls' clothing	1,00	134,5	144,6	144,6	0,0	+7,5
Other, including articles of fur	0,06	127,5	146,9	146,9	0,0	+15,2
2.6 Leather and leather products	0,21	123,6	129,5	131,3	+1,4	+6,2
2.7 Footwear	0,68	134,0	137,1	137,3	+0,1	+2,5
2.8 Wood and wood products	1,46	126,4	133,0	135,1	+1,6	+6,9
Sawmilling and planing of wood	0,46	130,0	133,2	133,3	+0,1	+2,5
Products of wood, cork and plaiting materials	1,00	122,9	130,9	134,0	+2,4	+9,0
2.9 Paper, paper products and printing	9,82	138,3	147,6	150,1	+1,7	+8,5
Paper and paper products	3,70	139,3	150,1	150,7	+0,4	+8,2
Publishing and printing	6,12	138,5	146,9	150,7	+2,6	+8,8
2.10 Products of petroleum and coal	3,29	181,2	256,0	246,8	-3,6	+36,2
2.11 Chemicals and chemical products	6,76	129,2	138,1	140,4	+1,7	+8,7
Basic chemicals	2,52	127,9	140,0	142,3	+1,6	+11,3
Fertilizers	0,49	127,8	128,5	134,6	+4,7	+5,3
Other	2,03	128,5	143,8	145,1	+0,9	+12,9
Other chemical products	4,24	132,3	139,4	141,6	+1,6	+7,0
Pharmaceutical products	1,05	143,0	143,8	149,5	+4,0	+4,5
Other	3,19	126,7	135,9	136,9	+0,7	+8,1

Table 12 - Production Price Index for output of South African industry groups for South African consumption according to group (concluded)

Base : June 1995 = 100

Origin/Group	Weight	Indices			% -change between	
		Jan 2000	Dec 2000	Jan 2001	Dec 2000 and Jan 2001	Jan 2000 and Jan 2001
2.12 Rubber and plastic products	2,95	133,9	142,0	144,8	+2,0	+8,1
Rubber products	0,83	125,6	135,6	138,8	+2,4	+10,5
Plastic products	2,12	137,6	145,0	147,7	+1,9	+7,3
2.13 Non-metallic mineral products	2,50	133,7	143,8	145,4	+1,1	+8,8
Glass and glass products	0,66	116,1	119,2	119,2	0,0	+2,7
Other	1,84	137,4	149,6	151,8	+1,5	+10,5
2.14 Basic metals	4,20	126,8	142,2	142,3	+0,1	+12,2
Ferrous	1,90	128,4	134,4	134,4	0,0	+4,7
Non-ferrous	2,30	119,5	142,1	142,3	+0,1	+19,1
2.15 Metal products	3,58	121,1	124,6	124,6	0,0	+2,9
Structural metal products	1,31	125,0	129,2	129,2	0,0	+3,4
Other	2,27	117,6	120,6	120,6	0,0	+2,6
2.16 Non-electrical machinery and equipment	2,94	117,6	121,5	121,5	0,0	+3,3
General purpose machinery	0,94	120,0	125,8	125,8	0,0	+4,8
Special purpose machinery	1,60	118,2	121,0	121,0	0,0	+2,4
Household appliances	0,40	110,3	115,0	115,0	0,0	+4,3
2.17 Office, accounting and computing machinery	0,02	100,3	101,6	101,6	0,0	+1,3
2.18 Electrical machinery and apparatus	2,15	124,4	136,5	136,5	0,0	+9,7
Electric motors, generators and transformers	0,20	127,3	134,4	134,4	0,0	+5,6
Electricity distribution and control apparatus	0,52	132,9	137,8	137,8	0,0	+3,7
Insulated wire and cable	0,86	111,4	123,9	123,9	0,0	+11,2
Other	0,57	136,8	156,2	156,2	0,0	+14,2
2.19 Radio, television and communication equipment and apparatus	1,58	114,2	119,9	119,9	0,0	+5,0
2.20 Medical, precision and optical instruments	0,25	148,7	152,9	156,0	+2,0	+4,9
Medical appliances and instruments for measuring, checking, testing and navigating	0,22	146,5	150,0	153,0	+2,0	+4,4
Other, including watches and clocks	0,03	159,8	169,5	173,3	+2,2	+8,4
2.21 Transport equipment	9,60	120,7	129,3	129,4	+0,1	+7,2
Motor vehicles, parts and accessories	9,55	121,8	130,5	130,5	0,0	+7,1
Motor vehicles	6,62	124,1	135,9	135,9	0,0	+9,5
Bodies, trailers and semi-trailers	0,17	123,9	138,8	138,8	0,0	+12,0
Parts and accessories	2,76	113,9	115,4	115,5	+0,1	+1,4
Other transport equipment	0,05	103,7	104,4	104,4	0,0	+0,7
2.22 Furniture	1,27	134,7	139,4	139,4	0,0	+3,5
2.23 Other manufactures	1,37	113,5	121,0	121,0	0,0	+6,6
3. Electricity, Gas Steam and Water	6,17	121,0	121,8	127,0	+4,3	+5,0
3.1 Electricity	5,72	114,9	114,0	119,7	+5,0	+4,2
3.2 Gas, Steam and water	0,45	160,9	184,1	181,7	-1,3	+12,9

Table 13 - Production Price Index for imported commodities according to group

Base : June 1995 = 100

Origin/Group	Weight	Indices			% change between	
		Jan 2000	Dec 2000	Jan 2001	Dec 2000 and Jan 2001	Jan 2000 and Jan 2001
All groups	100,00	132,1	149,4	149,5	+0,1	+13,2
1. Agriculture, Forestry, Fishing and Mining	12,27	213,6	289,4	279,8	-3,3	+31,0
1.1 Agriculture	2,27	97,5	110,3	116,2	+5,3	+19,2
1.1.1 Food	1,66	100,9	107,7	112,9	+4,8	+11,9
Grain	1,30	100,4	110,8	117,4	+6,0	+16,9
Sugar cane	-	-	-	-	-	-
Oil seeds	-	-	-	-	-	-
Vegetables and dried beans	-	-	-	-	-	-
Fruit	0,06	91,9	102,0	101,9	-0,1	+10,9
Meat	0,05	113,3	130,1	130,1	0,0	+14,8
Milk and eggs	-	-	-	-	-	-
Other	0,25	102,7	88,3	88,3	0,0	-14,0
1.1.2 Other agriculture	0,61	89,2	118,2	126,3	+6,9	+41,6
1.2 Forestry	0,05	100,4	100,4	100,4	0,0	0,0
1.3 Fishing	0,01	101,5	102,4	102,4	0,0	+0,9
1.4 Mining and quarrying	9,94	239,7	329,9	316,8	-4,0	+32,2
Coal	0,26	100,1	100,2	100,2	0,0	+0,1
Metal ores	0,12	105,0	106,2	106,2	0,0	+1,1
Other minerals	9,56	248,3	343,3	329,5	-4,0	+32,7
2. Manufacturing	87,73	123,7	133,5	134,9	+1,0	+9,1
2.1 Food	3,96	137,8	152,2	156,0	+2,5	+13,2
Meat	0,67	102,6	111,8	114,1	+2,1	+11,2
Fresh meat	0,46	103,3	113,4	114,3	+0,8	+10,6
Meat products	0,21	89,9	96,0	101,2	+5,4	+12,6
Fish and fish products	0,44	153,6	183,2	191,9	+4,7	+24,9
Fruit and vegetable products	0,18	117,3	117,1	117,3	+0,2	0,0
Fats and oils	1,16	107,2	118,6	118,8	+0,2	+10,8
Milk products	0,21	151,9	173,0	176,7	+2,1	+16,3
Grain mill products	0,65	160,2	180,9	189,7	+4,9	+18,4
Sugar	0,01	112,0	124,1	125,9	+1,5	+12,4
Coffee and tea	0,03	97,0	101,9	102,7	+0,8	+5,9
Other	0,61	122,4	123,3	125,3	+1,6	+2,4
2.2 Beverages	0,66	104,6	108,5	108,9	+0,4	+4,1
Alcoholic	0,64	105,5	109,6	109,9	+0,3	+4,2
Non-alcoholic	0,02	86,0	85,5	85,5	0,0	-0,6
2.3 Tobacco products	0,04	111,6	113,0	113,0	0,0	+1,3
2.4 Textiles and made-up goods	2,03	108,1	115,8	116,0	+0,2	+7,3
Spinning, weaving and finishing of textiles	1,28	104,8	110,7	110,8	+0,1	+5,7
Other textiles	0,75	111,1	121,8	122,1	+0,2	+9,9
2.5 Wearing apparel	0,78	102,7	109,2	109,2	0,0	+6,3
Knitted and crocheted fabrics and articles	0,30	101,9	105,7	105,7	0,0	+3,7
Wearing apparel	0,48	102,8	110,9	111,0	+0,1	+8,0
Men's and boys' clothing	0,24	105,6	106,6	106,7	+0,1	+1,0
Women's and girls' clothing	0,20	100,1	116,7	116,7	0,0	+16,6
Other, including articles of fur	0,04	99,0	105,6	105,6	0,0	+6,7
2.6 Leather and leather products	0,51	128,5	142,3	143,4	+0,8	+11,6
2.7 Footwear	0,73	114,7	115,3	115,3	0,0	+0,5
2.8 Wood and wood products	0,71	127,3	133,0	133,4	+0,3	+4,8
Sawmilling and planing of wood	0,38	102,6	102,6	102,6	0,0	0,0
Products of wood, cork and plaiting materials	0,33	169,8	184,3	185,4	+0,6	+9,2
2.9 Paper, paper products and printing	3,57	124,7	136,1	136,0	-0,1	+9,1
Paper and paper products	1,88	117,4	132,1	133,0	+0,7	+13,3
Publishing and printing	1,69	135,1	143,3	142,0	-0,9	+5,1
2.10 Products of petroleum and coal	1,32	100,0	100,1	100,2	+0,1	+0,2
2.11 Chemicals and chemical products	12,81	133,2	147,5	151,2	+2,5	+13,5
Basic chemicals	6,30	149,4	171,0	176,7	+3,3	+18,3
Fertilizers	0,32	123,1	139,4	145,2	+4,2	+18,0
Other	5,98	150,9	172,8	178,6	+3,4	+18,4
Other chemical products	6,51	119,8	127,9	129,9	+1,6	+8,4
Pharmaceutical products	2,60	117,7	126,0	128,5	+2,0	+9,2
Other	3,91	114,7	122,1	123,6	+1,2	+7,8

Table 13 - Production Price Index for imported commodities according to group (concluded)

Base : June 1995 = 100

Origin/Group	Weight	Indices			% -change between	
		Jan 2000	Dec 2000	Jan 2001	Dec 2000 and Jan 2001	Jan 2000 and Jan 2001
2.12 Rubber and plastic products	2,07	131,7	133,1	133,4	+0,2	+1,3
Rubber products	0,92	135,4	137,0	137,6	+0,4	+1,6
Plastic products	1,15	128,3	129,6	129,7	+0,1	+1,1
2.13 Non-metallic mineral products	1,57	102,8	104,9	105,5	+0,6	+2,6
Glass and glass products	0,47	101,2	104,7	105,1	+0,4	+3,9
Other	1,10	103,3	104,8	105,5	+0,7	+2,1
2.14 Basic metals	3,35	104,2	109,8	110,1	+0,3	+5,7
Ferrous	1,60	102,0	102,3	102,4	+0,1	+0,4
Non-ferrous	1,75	105,8	116,1	116,6	+0,4	+10,2
2.15 Metal products	2,09	197,0	214,7	215,5	+0,4	+9,4
Structural metal products	0,18	100,8	102,4	103,8	+1,4	+3,0
Other	1,91	212,7	232,8	233,6	+0,3	+9,8
2.16 Non-electrical machinery and equipment	17,02	118,2	123,7	124,2	+0,4	+5,1
General purpose machinery	6,50	102,8	106,6	107,1	+0,5	+4,2
Special purpose machinery	9,36	134,1	140,5	141,0	+0,4	+5,1
Household appliances	1,16	98,8	106,4	107,5	+1,0	+8,8
2.17 Office, accounting and computing machinery	5,18	126,7	137,0	136,9	-0,1	+8,1
2.18 Electrical machinery and apparatus	3,41	104,7	108,6	109,0	+0,4	+4,1
Electric motors, generators and transformers	0,73	101,8	101,8	101,8	0,0	0,0
Electricity distribution and control apparatus	1,23	101,0	103,2	103,0	-0,2	+2,0
Insulated wire and cable	0,22	109,4	132,1	136,5	+3,3	+24,8
Other	1,23	109,9	114,5	115,2	+0,6	+4,8
2.19 Radio, television and communication equipment and apparatus	5,73	105,2	108,5	110,1	+1,5	+4,7
2.20 Medical, precision and optical instruments	3,67	131,5	141,0	141,2	+0,1	+7,4
Medical appliances and instruments for measuring, checking, testing and navigating	3,05	134,8	145,3	145,3	0,0	+7,8
Other, including watches and clocks	0,62	121,7	126,9	127,8	+0,7	+5,0
2.21 Transport equipment	14,93	147,3	164,9	167,2	+1,4	+13,5
Motor vehicles, parts and accessories	13,08	158,5	178,7	181,4	+1,5	+14,4
Motor vehicles	2,22	100,9	103,2	103,5	+0,3	+2,6
Bodies, trailers and semi-trailers	0,15	101,9	105,7	109,2	+3,3	+7,2
Parts and accessories	10,71	285,1	324,5	329,7	+1,6	+15,6
Other transport equipment	1,85	102,4	105,1	105,2	+0,1	+2,7
2.22 Furniture	0,31	101,0	101,5	101,5	0,0	+0,5
2.23 Other manufactures	1,28	102,8	107,6	107,6	0,0	+4,7
3. Electricity, Gas Steam and Water	-	-	-	-	-	-
3.1 Electricity	-	-	-	-	-	-
3.2 Gas, Steam and water	-	-	-	-	-	-

Table 14 - Production Price Index for exported commodities according to group

Base : June 1995 = 100

Origin/Group	Weight	Indices			% change between	
		Jan 2000	Dec 2000	Jan 2001	Dec 2000 and Jan 2001	Jan 2000 and Jan 2001
All groups	100,00	128,0	138,9	138,7	-0,1	+8,4
1. Agriculture, Forestry, Fishing and Mining	30,30	139,0	148,7	150,3	+1,1	+8,1
1.1 Agriculture	5,00	93,4	79,4	82,7	+4,2	-11,5
1.1.1 Food	4,89	92,2	76,6	80,0	+4,4	-13,2
Grain	2,03	111,3	91,7	98,9	+7,9	-11,1
Sugar cane	-	-	-	-	-	-
Oil seeds	-	-	-	-	-	-
Vegetables and dried beans	0,44	100,0	100,0	100,0	0,0	0,0
Fruit	2,08	70,6	51,5	52,0	+1,0	-26,3
Meat	0,11	115,1	178,8	179,5	+0,4	+56,0
Milk and eggs	0,01	100,0	100,0	100,0	0,0	0,0
Other	0,22	-	-	-	-	-
1.1.2 Other agriculture	0,11	109,9	119,1	122,0	+2,4	+11,0
1.2 Forestry	0,11	100,0	100,0	100,0	0,0	0,0
1.3 Fishing	0,18	129,6	145,3	146,0	+0,5	+12,7
1.4 Mining and quarrying	25,01	148,4	162,8	164,1	+0,8	+10,6
Coal	6,79	128,4	156,1	157,6	+1,0	+22,7
Metal ores	12,26	157,4	170,6	172,3	+1,0	+9,5
Other minerals	5,96	152,7	154,2	154,4	+0,1	+1,1
2. Manufacturing	69,70	123,2	134,6	133,6	-0,7	+8,4
2.1 Food	5,40	120,5	128,0	129,4	+1,1	+7,4
Meat	0,62	100,6	114,5	115,3	+0,7	+14,6
Fresh meat	0,20	99,3	97,5	97,5	0,0	-1,8
Meat products	0,42	101,3	124,1	125,5	+1,1	+23,9
Fish and fish products	0,69	113,7	115,0	117,7	+2,3	+3,5
Fruit and vegetable products	1,41	126,4	136,5	139,0	+1,8	+10,0
Fats and oils	0,24	116,8	116,8	116,8	0,0	0,0
Milk products	0,19	122,9	129,4	129,8	+0,3	+5,6
Grain mill products	0,36	124,8	126,1	126,0	-0,1	+1,0
Sugar	1,38	127,9	138,7	138,0	-0,5	+7,9
Coffee and tea	0,03	151,1	151,9	151,9	0,0	+0,5
Other	0,48	130,1	135,0	135,2	+0,1	+3,9
2.2 Beverages	1,57	160,9	169,8	169,9	+0,1	+5,6
Alcoholic	1,44	166,2	175,8	175,9	+0,1	+5,8
Non-alcoholic	0,13	100,8	100,9	101,0	+0,1	+0,2
2.3 Tobacco products	0,16	133,2	144,2	144,2	0,0	+8,3
2.4 Textiles and made-up goods	1,38	113,9	130,1	130,1	0,0	+14,2
Spinning, weaving and finishing of textiles	0,96	115,4	137,4	137,4	0,0	+19,1
Other textiles	0,42	110,5	113,2	113,2	0,0	+2,4
2.5 Wearing apparel	0,65	108,2	109,1	109,1	0,0	+0,8
Knitted and crocheted fabrics and articles	0,13	108,7	109,9	109,9	0,0	+1,1
Wearing apparel	0,52	108,0	108,9	108,9	0,0	+0,8
Men's and boys' clothing	0,33	110,0	111,3	111,3	0,0	+1,2
Women's and girls' clothing	0,16	100,5	100,5	100,5	0,0	0,0
Other, including articles of fur	0,03	134,2	135,5	135,5	0,0	+1,0
2.6 Leather and leather products	0,69	101,3	104,2	104,2	0,0	+2,9
2.7 Footwear	0,12	119,1	121,4	124,5	+2,6	+4,5
2.8 Wood and wood products	0,84	101,9	108,1	109,0	+0,8	+7,0
Sawmilling and planing of wood	0,53	101,2	110,0	110,0	0,0	+8,7
Products of wood, cork and plaiting materials	0,31	103,1	105,0	107,4	+2,3	+4,2
2.9 Paper, paper products and printing	3,70	111,6	123,6	124,3	+0,6	+11,4
Paper and paper products	3,24	110,2	123,6	124,4	+0,6	+12,9
Publishing and printing	0,46	121,5	123,9	123,9	0,0	+2,0
2.10 Products of petroleum and coal	3,20	141,4	166,5	136,2	-18,2	-3,7
2.11 Chemicals and chemical products	9,41	128,9	132,5	133,9	+1,1	+3,9
Basic chemicals	6,68	122,5	125,4	125,6	+0,2	+2,5
Fertilizers	0,91	105,3	106,6	106,6	0,0	+1,2
Other	5,77	125,2	128,3	128,6	+0,2	+2,7
Other chemical products	2,73	144,7	149,9	154,4	+3,0	+6,7
Pharmaceutical products	0,36	129,9	144,0	172,8	+20,0	+33,0
Other	2,37	147,0	150,8	151,6	+0,5	+3,1

Table 14 - Production Price Index for exported commodities according to group (concluded)

Base : June 1995 = 100

Origin/Group	Weight	Indices			% -change between	
		Jan 2000	Dec 2000	Jan 2001	Dec 2000 and Jan 2001	Jan 2000 and Jan 2001
2.12 Rubber and plastic products	1,02	124,6	133,5	136,2	+2,0	+9,3
Rubber products	0,51	140,7	151,3	156,3	+3,3	+11,1
Plastic products	0,51	108,5	115,5	116,0	+0,4	+6,9
2.13 Non-metallic mineral products	0,87	107,2	111,0	111,4	+0,4	+3,9
Glass and glass products	0,23	98,0	101,6	103,2	+1,6	+5,3
Other	0,64	110,5	114,4	114,4	0,0	+3,5
2.14 Basic metals	22,75	126,7	148,2	148,1	-0,1	+16,9
Ferrous	10,75	137,6	163,1	162,7	-0,2	+18,2
Non-ferrous	12,00	116,9	134,9	135,0	+0,1	+15,5
2.15 Metal products	2,09	125,3	133,2	133,2	0,0	+6,3
Structural metal products	1,02	138,5	153,5	153,5	0,0	+10,8
Other	1,07	112,7	113,8	113,8	0,0	+1,0
2.16 Non-electrical machinery and equipment	5,61	113,8	117,1	117,1	0,0	+2,9
General purpose machinery	2,25	117,9	122,2	122,2	0,0	+3,6
Special purpose machinery	3,09	110,7	112,5	112,5	0,0	+1,6
Household appliances	0,27	114,5	126,1	126,1	0,0	+10,1
2.17 Office, accounting and computing machinery	0,52	100,0	100,0	100,0	0,0	0,0
2.18 Electrical machinery and apparatus	1,13	111,5	113,6	113,6	0,0	+1,9
Electric motors, generators and transformers	0,17	110,5	117,6	117,6	0,0	+6,4
Electricity distribution and control apparatus	0,23	106,5	107,0	107,0	0,0	+0,5
Insulated wire and cable	0,15	104,3	109,7	109,7	0,0	+5,2
Other	0,58	115,6	116,1	116,1	0,0	+0,4
2.19 Radio, television and communication equipment and apparatus	0,64	118,3	121,5	121,5	0,0	+2,7
2.20 Medical, precision and optical instruments	0,54	120,1	123,2	125,4	+1,8	+4,4
Medical appliances and instruments for measuring, checking, testing and navigating	0,46	122,5	125,8	128,1	+1,8	+4,6
Other, including watches and clocks	0,08	106,2	108,6	109,5	+0,8	+3,1
2.21 Transport equipment	4,26	123,3	125,8	125,8	0,0	+2,0
Motor vehicles, parts and accessories	3,40	124,7	127,2	127,2	0,0	+2,0
Motor vehicles	1,16	117,1	117,1	117,1	0,0	0,0
Bodies, trailers and semi-trailers	0,86	116,6	116,8	116,8	0,0	+0,2
Parts and accessories	1,38	136,7	143,0	143,0	0,0	+4,6
Other transport equipment	0,86	117,8	120,4	120,4	0,0	+2,2
2.22 Furniture	1,78	99,9	99,9	99,9	0,0	0,0
2.23 Other manufactures	1,37	117,0	115,9	115,9	0,0	-0,9
3. Electricity, Gas Steam and Water	-	-	-	-	-	-
3.1 Electricity	-	-	-	-	-	-
3.2 Gas, Steam and water	-	-	-	-	-	-

Table 15 - Production Price Index for materials used in certain industries

Base : June 1995 = 100

Industry	Indices			% -change between	
	Jan 2000	Dec 2000	Jan 2001	Dec 2000 and Jan 2001	Jan 2000 and Jan 2001
Building and construction	134,1	144,1	145,3	+0,8	+8,4
Building industries	130,3	137,6	138,9	+0,9	+6,6
Civil engineering	137,7	144,5	147,2	+1,9	+6,9
Mechanical engineering	125,8	133,6	134,5	+0,7	+6,9
Electrical engineering	124,4	133,8	134,0	+0,1	+7,7

Table 16 - Production Price Index for selected materials

Base : June 1995 = 100

Type of materials	Indices			% -change between	
	Jan 2000	Dec 2000	Jan 2001	Dec 2000 and Jan 2001	Jan 2000 and Jan 2001
Wool, auction prices, 18 types	117,2	135,7	145,1	+6,9	+23,8
Coal, bituminous	148,5	165,1	163,8	-0,8	+10,3
Coal, bituminous - for local sales	147,5	166,4	168,3	+1,1	+14,1
- Cobbles, grade A	135,5	167,5	182,5	+9,0	+34,7
- Cobbles, grade B	114,2	165,6	186,2	+12,4	+63,0
- Large nuts, grade A	153,2	169,3	170,2	+0,5	+11,1
- Large nuts, grade B	134,9	148,7	150,3	+1,1	+11,4
- Small nuts, grade A	149,1	173,6	179,2	+3,2	+20,2
- Small nuts, grade B	109,8	129,9	130,1	+0,2	+18,5
- Peas, grade A	127,0	142,6	145,8	+2,2	+14,8
- Peas, grade B	146,6	161,7	168,5	+4,2	+14,9
Anthracite - for local sales					
- Grade SP	160,0	146,4	152,6	+4,2	-4,6
- Grade A	163,9	150,0	156,3	+4,2	-4,6
Wood products, excluding minewood	125,3	129,5	131,0	+1,2	+4,5
SA Pine, kiln dried	139,9	147,3	147,3	0,0	+5,3
Paper, newsprint	128,5	115,1	115,1	0,0	-10,4
Kraft paper	133,6	151,0	151,0	0,0	+13,0
Boxes, corrugated cardboard	148,3	156,6	156,1	-0,3	+5,3
Leather, bovine hide	139,2	164,0	164,8	+0,5	+18,4
Rubber crude	105,1	109,2	109,5	+0,3	+4,2
- Natural	100,0	100,0	100,0	0,0	0,0
- Synthetic	110,2	118,2	118,9	+0,6	+7,9
- Synthetic - Local	110,2	118,2	118,9	+0,6	+7,9
Tyres and tubes	126,3	135,2	137,5	+1,7	+8,9
Plastic bottles	125,7	128,3	134,5	+4,8	+7,0
Plastic, bulk forms	121,3	138,0	139,9	+1,4	+15,3
Sulphuric acid	108,9	112,5	114,4	+1,7	+5,1
Glycerine	107,5	107,5	107,5	0,0	0,0
Paints	133,0	143,6	146,4	+1,9	+10,1
Foam insulation materials	145,6	145,6	145,6	0,0	0,0
- Polyurethane	145,6	145,6	145,6	0,0	0,0
Petro-chemical building materials	135,0	152,7	152,8	+0,1	+13,2
Waterproofing	126,1	140,0	142,8	+2,0	+13,2
Resilient floor coverings	154,2	174,8	176,0	+0,7	+14,1
Petrol, 93 octane - Coast	177,6	256,8	248,8	-3,1	+40,1
- Witwatersrand	177,6	256,8	248,8	-3,1	+40,1
Diesel oil - Coast	181,8	300,0	285,1	-5,0	+56,8
- Witwatersrand	181,8	300,0	285,1	-5,0	+56,8
Transformer oil	148,6	186,4	191,9	+3,0	+29,1
Bitumen	138,8	161,6	161,6	0,0	+16,4
Tar	167,8	210,1	205,4	-2,2	+22,4
Bricks - Stock	123,5	129,8	130,9	+0,8	+6,0
- Face	148,1	161,7	164,2	+1,5	+10,9
Cement building blocks	129,3	129,3	129,3	0,0	0,0
Sand	134,0	145,2	153,3	+5,6	+14,4
Aggregated crushed stone	132,6	153,1	153,1	0,0	+15,5
Ordinary and extended cement	148,8	158,2*	168,8	+6,7	+13,4
Natural stone, cut and sawn	136,1	143,5	143,5	0,0	+5,4
Glass, for building industry	132,5	136,7	137,7	+0,7	+3,9

Table 16 - Production Price Index for selected materials (concluded)

Base : June 1995 = 100

Type of materials	Indices			% -change between	
	Jan 2000	Dec 2000	Jan 2001	Dec 2000 and Jan 2001	Jan 2000 and Jan 2001
Ironmongery	112,6	117,3	117,6	+0,3	+4,4
Drainage	140,0	158,2	158,0	-0,1	+12,9
Plumbing	113,5	115,5	115,4	-0,1	+1,7
Ceramic and encaustic wall and floor tiles and mosaics	123,0	121,2	121,2	0,0	-1,5
Ceiling materials	120,1	134,9	134,9	0,0	+12,3
Partitioning materials	120,1	134,9	134,9	0,0	+12,3
Fibrous insulation - Preformed pipe sections	118,2	118,2	118,2	0,0	0,0
- Batten board	117,8	128,3	128,3	0,0	+8,9
- Mattresses	117,8	128,3	128,3	0,0	+8,9
- Ceiling insulation	127,3	137,5	137,5	0,0	+8,0
Insulator, porcelain	100,0	100,0	100,0	0,0	0,0
Containers, glass	110,2	111,4	111,4	0,0	+1,1
Billets, mild steel	123,3	129,4	129,4	0,0	+4,9
Angles, mild steel	122,6	126,7	126,7	0,0	+3,3
Structural steel, unworked	119,9	104,6	104,6	0,0	-12,8
Reinforcing steel	141,4	141,8	141,8	0,0	+0,3
Plate, mild steel	133,8	138,3	138,3	0,0	+3,4
Sheet, uncoated	119,6	101,2	101,2	0,0	-15,4
Sheet, galvanized	133,8	138,3	138,3	0,0	+3,4
Tinplate	123,1	105,6	105,6	0,0	-14,2
Steel tubes, pipes and fittings	126,7	128,0	128,0	0,0	+1,0
Copper, basic forms	107,3	125,2	126,2	+0,8	+17,6
Aluminium - Anodising	111,7	109,9	111,0	+1,0	-0,6
- Basic forms	110,2	141,1	141,1	0,0	+28,0
- Extruded products	158,0	185,5	187,7	+1,2	+18,8
- Sheeting	107,7	123,5	123,8	+0,2	+14,9
Bearings, ball and roller	139,7	145,4	148,9	+2,4	+6,6
Electrical contracting materials	127,6	136,7	137,1	+0,3	+7,4
Construction machinery (excluding trucks)	132,1	138,6	138,8	+0,1	+5,1
Trucks	123,1	139,1	139,1	0,0	+13,0
Civil engineering plant	149,1	163,8	163,8	0,0	+9,9
Mining machinery	125,3	128,8	128,8	0,0	+2,8
Rubber industry's indices:					
Natural rubber (imported)	62,5	62,5	62,5	0,0	0,0
Acrylonitrile butadiene rubber KRYNOC 805	100,0	100,0	100,0	0,0	0,0
Polychloroprene rubber WRT type (imported)	97,8	97,8	97,8	0,0	0,0
Carbon black - N774 (local)	118,3	118,3	118,3	0,0	0,0
- N660	131,0	131,0	131,0	0,0	0,0
Accelerator ORAC NS (local)	93,4	93,4	93,4	0,0	0,0
Anti-oxidant OROX - HR (local)	119,9	119,9	119,9	0,0	0,0
- Q	105,1	105,1	105,1	0,0	0,0
Anti-ozonant ORFLEX PP (local)	113,6	113,6	113,6	0,0	0,0
Bulk yarn - Nylon	106,2	106,2	106,2	0,0	0,0
- Cotton	109,6	109,6	109,6	0,0	0,0
Stearic acid (local)	100,0	100,0	100,0	0,0	0,0
Plasticiser DODP (local)	61,4	61,4	61,4	0,0	0,0
Coumarone indene resin (imported)	150,0	160,7	160,7	0,0	+7,1
Chlorobutyl rubber (imported)	110,0	110,0	110,0	0,0	0,0
EPDM Vistalon 5600 (imported)	105,0	105,0	105,0	0,0	0,0
Zinc oxide	118,1	118,1	118,1	0,0	0,0
Synthetic rubber - 1502	136,3	173,9	190,5	+9,5	+39,8
- 1712	127,9	157,6	173,3	+10,0	+35,5
Polybutadiene	113,0	145,8	162,0	+11,1	+43,4
Processing oil	105,4	105,4	105,4	0,0	0,0
Bead wire	95,8	95,8	95,8	0,0	0,0
Steel cord wire	118,5	118,5	118,5	0,0	0,0
Nylon fabric - 940 X 2	131,6	131,6	131,6	0,0	0,0
- 1400 X 2	133,1	133,1	133,1	0,0	0,0
Rayon fabric - 1840 X 2	104,9	104,9	104,9	0,0	0,0

Table 17 - Seasonally adjusted PPI

Description	Sep 2000	Oct 2000	Nov 2000	Dec 2000	Jan 2001
All commodities for consumption in South Africa	138,5	139,7	141,1	142,5	143,1
Locally produced commodities	137,1	138,0	139,0	139,8	140,4
Imported commodities	141,1	143,1	145,7	148,2	149,2
Output of South African industry					
Total output	138,6	139,8	141,4	142,2	142,7
For South African consumption	137,1	138,0	139,0	139,8	140,4
Agriculture, Forestry and Fishing	119,2	119,2	120,8	123,6	125,5
Tobacco and Beverages	149,9	151,4	152,5	153,5	155,1
Textiles, Clothing and Footwear	129,7	130,3	130,7	132,4	132,3
Machinery and Transport equipment	125,8	126,2	128,0	128,5	129,0
Mining, Electricity, Gas and Water	137,8	138,1	139,0	137,2	137,9
Basic metals and Metal products	134,2	134,4	134,0	134,5	134,9
Food	140,3	140,4	141,1	141,4	141,8
Total Manufacturing	140,2	141,2	142,2	142,9	143,3

Additional information

Explanatory Notes

- Introduction** 1 This publication contains results of the monthly Surveys of Prices of Locally Produced Commodities (which are locally sold or exported) and Imported Commodities. These indices for commodities are classified to designated industries of the South African economy. They are calculated on the base June 1995=100.
- Scope of the PPI survey** 2 The indices are compiled on a gross industry basis, i.e. each index relates to those articles, which are produced, imported and exported by the designated industries of the South African economy. Selling prices are collected from manufacturers, importers and exporters.
- Classification** 3 The 1993 edition of the Standard Industrial Classification of all Economic Activities (SIC), Fifth edition, Report No. 09-90-02, was used to classify the statistical units in the survey. The SIC is based on the 1990 International Standard Industrial Classification of all Economic Activities (ISIC) with suitable adaptations for local conditions. Statistics in this publication are presented at SIC subdivision level.
- 4 This publication presents information which measures changes in prices of products, that are produced, imported or exported by establishments (branches). It excludes semi-processed products, which have been produced by the establishment within the manufacturing division and carried over to other establishments within the manufacturing division for further processing.
- Statistical unit** 5 The statistical unit is the establishment (branch), which is the smallest economic unit that functions as a separate entity. Each statistical unit is classified to an industry according to the classification of the products that the unit manufacturers, imports or exports.
- Survey methodology and design** 6 This survey is collected by mail from a sample of approximately 3 500 manufacturers, 3 500 exporters and 3 500 importers. The indices are based on producer prices at the point of production in the case of commodities produced in South Africa, and wholesale prices “ex-warehouse”, in the case of imported commodities. Prices “delivered” or “free on rail” are accepted if this is the normal basis of quotation.
- Pricing basis** 7 Price information refers to the first seven days of the relevant month, except in the case of mining and most of the agricultural products, where it refers to the average price for the month. The average price of imported crude petroleum, used in the compilation of the import component of the PPI, is calculated as the value (in Rands) divided by the quantity of imported crude petroleum for the relevant month. **The prices of all items exclude Value Added Tax (VAT).**
- Weighting basis** 8 The index is a fixed weights index as the weights are determined in the base period and they do not change until the next base period. The commodities directly represented in the index were selected on the basis of the values of sales of products –
- produced during the 1995-96 financial year for locally produced commodities;
 - exported during 1996; and
 - imported during 1996.

These commodities constitute approximately 80 per cent of the total value of production/imports/exports during the relevant year as indicated above. Weights were allocated to each product in accordance with the value of sales for each item during the 1995/96 financial year. The basis on which the weighting structure of each main PPI component, indicated in the tables published in this statistical release, was calculated, is indicated in table D.

Table D– Basis on which the weighting structure of each PPI table is based

Number of table in this statistical release	PPI component	Basis for weighting structure
Table 10	Commodities for South African consumption	Sales value of South African production minus exports, plus imports
Table 11	Total output of South African industry groups	Sales value of South African production
Table 12	Output of South African industry groups for South African consumption	Sales value of South African production minus exports
Table 13	Imported commodities	Sales value of imported commodities
Table 14	Exported commodities	Sales value of exported commodities
Table 15	Materials used in certain industries	Value of materials used

- Processing of price information** **9** The prices that are quoted for the different products are checked. If the price difference between two successive periods are outside the specified range of increase (+10%) or decreases (-5%), the current price levels are confirmed with the relevant respondents through a telephone inquiry.
- Calculating product price indices** **10** Price relatives are calculated for each product per respondent by dividing the current prices by the previously quoted price. The price relative for each product is calculated by means of the geometric mean of the price relatives for each respondent. This price relative for each product is then applied to the product index for the previous month in order to obtain a product index for the relevant month.
- Calculating group price indices** **11** Group price indices are calculated by weighting product indices with the relevant product weight, according to each group's (local, import, export) weighting structure, using the Laspeyres index formula.
- Contributions of specific products to the total PPI** **12** The monthly (annual) contribution of a specific product or group of products to the total PPI is calculated by multiplying the weight of this product or group of products with the monthly (annual) change in the index for this product or group of products, divided by the index for 'All groups'.
- Seasonal adjustment** **13** Seasonal fluctuations in a time series are those fluctuations which usually tend to occur at about the same time and with the same magnitude each year. This may be the result of climatic influences or other social and commercial habits (e.g. the price of bread, which was previously revised in October of each year). In the analysis of time series, Stats SA makes use of the X-11 technique, which was developed by the American Bureau of Census. The seasonally adjusted indices for the latest month are calculated with seasonal factors, which are based on a time series analysis of information up to and including the previous month. Therefore, historical seasonally adjusted indices are revised annually in January of each year.
- Reliability of estimates** **14** Inaccuracies may occur because of imperfections in reporting by enterprises and errors made in collection and processing of the data. Inaccuracies of this kind are referred to as non-sampling errors. Every effort is made to reduce non-sampling errors to a minimum by careful designing the questionnaires, editing data and efficient operating procedures.

Related publications	15	Users may also wish to refer to the following publications, which are available from Stats SA - <ul style="list-style-type: none"> • Bulletin of Statistics; and • SA Statistics. 										
Unpublished statistics	16	In some cases, Stats SA can also make available formation, which is not published. This information can be made available in one or more of the following ways: computer printout, diskette or CD. Generally a fee is levied for providing unpublished information.										
Symbols and abbreviations	17	<table border="0" style="width: 100%;"> <tr> <td style="width: 30%;">Stats SA</td> <td>Statistics South Africa</td> </tr> <tr> <td>..</td> <td>not available</td> </tr> <tr> <td>-</td> <td>nil or not applicable</td> </tr> <tr> <td>*</td> <td>revised since previous publication</td> </tr> <tr> <td>avg</td> <td>average</td> </tr> </table>	Stats SA	Statistics South Africa	..	not available	-	nil or not applicable	*	revised since previous publication	avg	average
Stats SA	Statistics South Africa											
..	not available											
-	nil or not applicable											
*	revised since previous publication											
avg	average											

GLOSSARY

Annual percentage change	The annual percentage change is the change in the index of the relevant month of the current year compared with the index of the same month in the previous year expressed as a percentage and is generally accepted as the yardstick of PPI inflation.
Average annual percentage change	The average annual percentage change is the change in the average index of one year compared with the average index of the previous year expressed as a percentage.
Contribution of specific products to the total PPI	The monthly (annual) contribution of a specific product or group of products to the total PPI is calculated by multiplying the weight of the index with the monthly (annual) change of the index divided by the index for “All Items”.
Establishment	An establishment (branch) is the smallest economic unit that functions as a separate entity.
Indicator products	Indicator products are those products whose sale value represent 80% of the total value of sales (turnover) in an industrial subgroup.
Monthly percentage change	The monthly percentage change is the change in the index of the relevant month compared to the index of the previous month expressed as a percentage.
Weights	The weights are the relevant importance of the indicator products in that subgroup. The weight of a product is calculated by dividing the actual value of sales of the relevant indicator product by the total value of sales in that subgroup.

For more information

Stats SA publishes approximately 400 different releases each year. It is not economically viable to produce them in more than one of South Africa's eleven official languages. Since the releases are used extensively, not only locally but also by international economic and social-scientific communities, Stats SA releases are published in English only.

Stats SA has copyright on this publication. Users may apply the information as they wish, provided that they acknowledge Stats SA as the source of the basic data wherever they process, apply, utilise, publish or distribute the data: and also that they specify that the relevant application and analysis (where applicable) result from their own processing of data.

Advance release calendar

An advance release calendar is disseminated on <http://www.statssa.gov.za>

Stats SA products

A complete set of Stats SA publications is available at the Stats SA Library and the following libraries -

National Library of South Africa, Pretoria Division
National Library of South Africa, Cape Town Division
Natal Society Library, Pietermaritzburg
Library of Parliament, Cape Town
Bloemfontein Public Library
Johannesburg Public Library
Eastern Cape Library Services, King William's Town
Central Regional Library, Pietersburg
Central Reference Library, Nelspruit
Central Reference Collection, Kimberley
Central Reference Library, Mmabatho

Stats SA also provides a subscription service.

Electronic services

A large range of data are available via on-line services, diskette and computer printouts. For more details about our electronic data services, contact (012) 310 8095.

You can visit us on the Internet at: <http://www.statssa.gov.za>

Enquiries

Telephone number: (012) 310 8095/390/351/040 (user enquiries)
(012) 310 8421/170/077 (technical enquiries)
(012) 310 8161 (publishing)

Fax number: (012) 328 3932

e-mail: ppi@statssa.pwv.gov.za

Postal address: Private Bag x44, Pretoria, 0001