
Statistical release

P0142.1

PRODUCER PRICE INDEX (PPI)

FEBRUARY 2012

**Embargoed until:
29 March 2012
9:30**

Enquiries:

Marais Kleu
(012) 310 8170

Forthcoming issue:

March 2012

Expected release date

26 April 2012

KEY FIGURES AS AT FEBRUARY 2012

Producer Price Index and rates of change according to main components

Base: 2000 = 100

Producer Price Index components	Indices			Percentage change between	
	Feb 2011	Jan 2012	Feb 2012	Jan 2012 and Feb 2012	Feb 2011 and Feb 2012
Domestic output	198,0	212,5	214,4	+0,9	+8,3
Exported commodities	172,6	183,4	182,8	-0,3	+5,9
Imported commodities	157,3	178,2	177,7	-0,3	+13,0

KEY FINDINGS AS AT FEBRUARY 2012

The annual percentage change in the PPI was +8,3% in February 2012 (i.e. the PPI in February 2012 compared with February 2011).

The Producer Price Index (PPI) for domestic output shows an annual rate of change of +8,3% in February 2012 (i.e. the PPI in February 2012 compared with February 2011). This rate is 0,6 of a percentage point lower than the corresponding annual rate of +8,9% in January 2012 (see Table 1(A), p.5). This lower annual rate in February 2012 can be explained by decreases in the annual rate of change in the Producer Price Index for:

- Agriculture: the annual rate decreased from +7,9% in January 2012 to +4,6% in February 2012.
- Other manufactures: the annual rate decreased from +13,4% in January 2012 to +9,5% in February 2012.
- Metal products: the annual rate decreased from +11,4% in January 2012 to +9,1% in February 2012.
- Basic metals: the annual rate decreased from +5,4% in January 2012 to +1,3% in February 2012.
- Forestry: the annual rate decreased from +5,3% in January 2012 to +3,8% in February 2012.

These decreases were partially counteracted by an increase in the annual rate of change for:

- Mining and quarrying: the annual rate increased from +7,7% in January 2012 to +8,2% in February 2012.

From January 2012 to February 2012 the PPI for domestic output increased by 0,9%.

The monthly increase of 0,9% in the PPI for domestic output was mainly due to monthly contributions from increases in the price indices of mining and quarrying (+0,6 of a percentage point), all other groups (+0,3 of a percentage point), products of petroleum and coal (+0,2 of a percentage point), food at manufacturing (+0,1 of a percentage point) and electricity (+0,1 of a percentage point). These increases were partially counteracted by decreases in the price indices of agriculture (-0,2 of a percentage point) and basic metals (-0,2 of a percentage point) (see Table 3, p.6).

The PPI for exported commodities shows an annual rate of change of +5,9% in February 2012 (i.e. the PPI in February 2012 compared with February 2011). This rate is 2,8 percentage points lower than the corresponding annual rate of +8,7% in January 2012 (see Table 1(B), p.5).

The annual increase of 5,9% in the PPI for exported commodities was mainly due to annual contributions from increases in the price indices of mining and quarrying (+4,3 percentage points), basic metals (+0,7 of a percentage point), chemicals and chemical products (+0,4 of a percentage point), all other groups (+0,3 of a percentage point), products of petroleum and coal (+0,1 of a percentage point), metal products (+0,1 of a percentage point), non-electrical machinery and equipment (+0,1 of a percentage point) and transport (+0,1 of a percentage point). These increases were partially counteracted by decreases in the price indices of food at manufacturing (-0,1 of a percentage point) and beverages (-0,1 of a percentage point) (see Table 4, p.7).

From January 2012 to February 2012 the PPI for exported commodities decreased by 0,3%.

The monthly decrease of 0,3% in the PPI for exported commodities was mainly due to a monthly contribution from decreases in the price indices of basic metals (-0,2 of a percentage point) and mining and quarrying (-0,1 of a percentage point) (see Table 5, p.7).

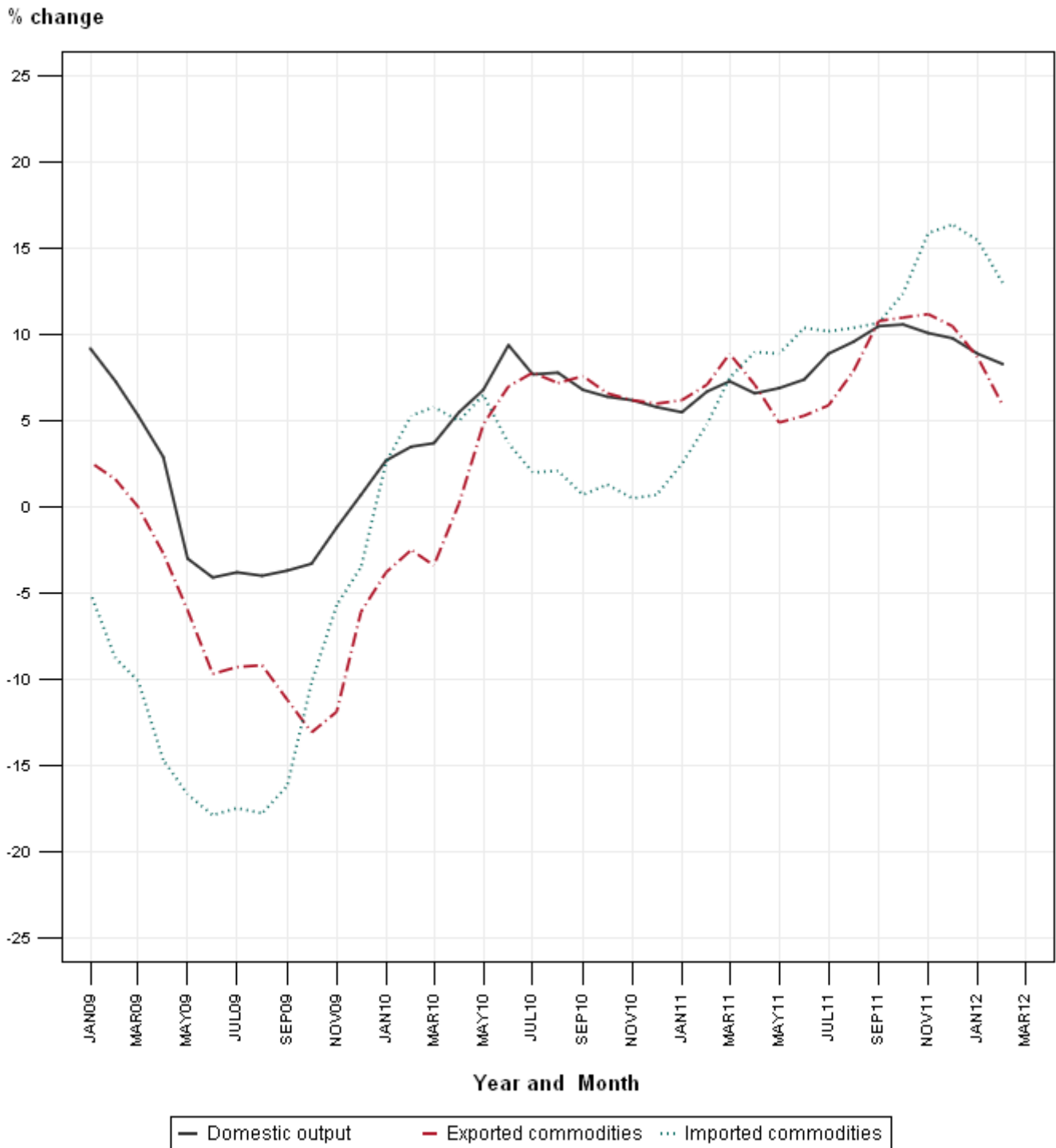
The PPI for imported commodities shows an annual rate of change of +13,0% in February 2012 (i.e. the PPI in February 2012 compared with February 2011). This rate is 2,5 percentage points lower than the corresponding annual rate of +15,5% in January 2012 (see Table 1(C), p.5).

The annual increase of 13,0% in the PPI for imported commodities was mainly due to annual contributions from increases in the price indices of mining and quarrying (+11,7 percentage points), chemicals and chemical products (+0,4 of a percentage point), non-electrical machinery and equipment (+0,3 of a percentage point), office, accounting and computing machinery (+0,2 of a percentage point), food at manufacturing (+0,1 of a percentage point), paper and paper products (+0,1 of a percentage point), electrical machinery and apparatus (+0,1 of a percentage point), medical appliances, precision and optical instruments, watches and clocks (+0,1 of a percentage point) and transport (+0,1 of a percentage point). These increases were partially counteracted by a decrease in the price index of metal products (-0,1 of a percentage point) (see Table 6, p.8).

From January 2012 to February 2012 the PPI for imported commodities decreased by 0,3%.

The monthly decrease of 0,3% in the PPI for imported commodities was due to monthly contributions from decreases in the price indices of mining and quarrying (-0,3 of a percentage point) and office, accounting and computing machinery (-0,1 of a percentage point). These increases were partially counteracted by an increase in the price index of all other groups (+0,1 of a percentage point) (see Table 7, p.8).

Figure 1 – Annual percentage change in the Producer Price Index:



Source: Stats SA

P J Lehohla
Statistician General

CONTENTS

Page

KEY FIGURES AS AT FEBRUARY 20121

Figure 1 – Annual percentage change in the Producer Price Index:.....3

Table 1 – The Producer Price Index (PPI) and the annual percentage change in the PPI on a monthly basis.....5

Table 2 – Contributions to the annual percentage change in the PPI for domestic output of South African industry.....6

Table 3 – Contributions to the monthly percentage change in the PPI for domestic output of South African industry.....6

Table 4 – Contributions to the annual percentage change in the PPI for exported commodities according to group7

Table 5 – Contributions to the monthly percentage change in the PPI for exported commodities according to group.....7

Table 6 – Contributions to the annual percentage change in the PPI for imported commodities according to group8

Table 7 – Contributions to the monthly percentage change in the PPI for imported commodities according to group.....8

Table 8 – Producer Price Index for domestic output of South African industry groups.....9

Table 9 – Producer Price Index for exported commodities according to group.....11

Table 10 – Producer Price Index for imported commodities according to group.....13

Table 11 – Producer Price Index for materials used in certain industries.....15

Table 12 – Producer Price Index for selected materials.....16

NOTES.....19

ADDITIONAL INFORMATION.....22

GLOSSARY.....25

FOR MORE INFORMATION.....26

Produced by Stats SA.....26

Table 1 The Producer Price Index (PPI) and the annual percentage change in the PPI on a monthly basis

Base: 2000 = 100

A) Domestic output

Year		Jan	Feb	Mar	Apr	May	Jun	Jul	Aug	Sep	Oct	Nov	Dec
2010	Index	184,9	185,6	186,2	189,0	189,3	196,8	199,4	200,2	192,0	191,2	192,5	193,0
	%	+2,7	+3,5	+3,7	+5,5	+6,8	+9,4	+7,7	+7,8	+6,8	+6,4	+6,2	+5,8
2011	Index	195,1	198,0	199,7	201,5	202,4	211,4	217,2	219,4	212,2	211,5	212,0	211,9
	%	+5,5	+6,7	+7,3	+6,6	+6,9	+7,4	+8,9	+9,6	+10,5	+10,6	+10,1	+9,8
2012	Index	212,5	214,4
	%	+8,9	+8,3

B) Exported commodities

Year		Jan	Feb	Mar	Apr	May	Jun	Jul	Aug	Sep	Oct	Nov	Dec
2010	Index	158,8	161,1	159,9	161,3	166,4	165,9	166,8	165,9	165,4	165,2	166,5	166,9
	%	-3,8	-2,5	-3,4	+0,2	+4,8	+7,0	+7,8	+7,2	+7,6	+6,6	+6,2	+6,0
2011	Index	168,7	172,6	174,1	172,7	174,5	174,7	176,7	179,0	183,2	183,3	185,1	184,5
	%	+6,2	+7,1	+8,9	+7,1	+4,9	+5,3	+5,9	+7,9	+10,8	+11,0	+11,2	+10,5
2012	Index	183,4	182,8
	%	+8,7	+5,9

C) Imported commodities

Year		Jan	Feb	Mar	Apr	May	Jun	Jul	Aug	Sep	Oct	Nov	Dec
2010	Index	150,6	150,1	151,3	151,5	153,3	150,4	149,4	150,7	148,7	148,8	150,5	152,1
	%	+2,6	+5,3	+5,8	+5,0	+6,5	+3,7	+2,0	+2,1	+0,7	+1,3	+0,5	+0,7
2011	Index	154,3	157,3	162,6	165,2	167,0	166,1	164,6	166,3	164,6	167,3	174,5	177,0
	%	+2,5	+4,8	+7,5	+9,0	+8,9	+10,4	+10,2	+10,4	+10,7	+12,4	+15,9	+16,4
2012	Index	178,2	177,7
	%	+15,5	+13,0

Table 2 Contributions to the annual percentage change in the PPI for domestic output of South African industry groups

Group	Contribution at Jan 2012	Contribution at Feb 2012
Agriculture	+0,6	+0,4
Forestry	+0,1	0,0
Mining and quarrying	+1,7	+1,8
Food at manufacturing	+0,7	+0,7
Beverages	+0,1	+0,1
Tobacco products	+0,1	+0,1
Wood and wood products	+0,1	+0,1
Paper and paper products	+0,2	+0,2
Products of petroleum and coal	+1,6	+1,6
Chemicals and chemical products	+0,4	+0,4
Rubber and plastic products	+0,1	+0,1
Basic metals	+0,5	+0,1
Metal products	+0,4	+0,3
Non-electrical machinery and equipment	+0,1	+0,1
Other manufactures	+0,5	+0,4
Electricity	+2,0	+2,0
Gas and water	+0,2	+0,2
All other groups	-0,5	-0,3
All groups	+8,9	+8,3

Table 3 Contributions to the monthly percentage change in the PPI for domestic output of South African industry groups

Group	Contribution at Jan 2012	Contribution at Feb 2012
Agriculture	-0,4	-0,2
Mining and quarrying	+0,2	+0,6
Food at manufacturing	0,0	+0,1
Products of petroleum and coal	0,0	+0,2
Chemicals and chemical products	+0,1	0,0
Basic metals	+0,1	-0,2
Electricity	0,0	+0,1
All other groups	+0,3	+0,3
All groups	+0,3	+0,9

Table 4 Contributions to the annual percentage change in the PPI for exported commodities according to group

Group	Contribution at Jan 2012	Contribution at Feb 2012
Mining and quarrying	+6,3	+4,3
Food at manufacturing	0,0	-0,1
Beverages	0,0	-0,1
Products of petroleum and coal	+0,1	+0,1
Chemicals and chemical products	+0,4	+0,4
Basic metals	+1,2	+0,7
Metal products	+0,1	+0,1
Non-electrical machinery and equipment	+0,2	+0,1
Transport	+0,1	+0,1
All other groups	+0,3	+0,3
All groups	+8,7	+5,9

Table 5 Contributions to the monthly percentage change in the PPI for exported commodities according to group

Group	Contribution at Jan 2012	Contribution at Feb 2012
Mining and quarrying	+0,3	-0,1
Basic metals	-1,1	-0,2
All other groups	+0,2	0,0
All groups	-0,6	-0,3

Table 6 Contributions to the annual percentage change in the PPI for imported commodities according to group

Group	Contribution at Jan 2012	Contribution at Feb 2012
Mining and quarrying	+14,2	+11,7
Food at manufacturing	+0,2	+0,1
Paper and paper products	+0,1	+0,1
Chemicals and chemical products	+0,4	+0,4
Basic metals	-0,1	0,0
Metal products	-0,1	-0,1
Non-electrical machinery and equipment	+0,3	+0,3
Office, accounting and computing machinery	+0,3	+0,2
Electrical machinery and apparatus	+0,1	+0,1
Medical appliances, precision and optical instruments, watches and clocks	+0,1	+0,1
Transport	+0,1	+0,1
All other groups	-0,1	0,0
All groups	+15,5	+13,0

Table 7 Contributions to the monthly percentage change in the PPI for imported commodities according to group

Group	Contribution at Jan 2012	Contribution at Feb 2012
Mining and quarrying	+0,6	-0,3
Office, accounting and computing machinery	0,0	-0,1
All other groups	+0,1	+0,1
All groups	+0,7	-0,3

Table 8 Producer Price Index for domestic output of South African industry groups
Base: 2000 = 100

Origin/Group	Weight	Indices			% change between	
		Feb 2011	Jan 2012	Feb 2012	Jan 2012 and Feb 2012	Feb 2011 and Feb 2012
All groups	100,00	198,0	212,5	214,4	+0,9	+8,3
1. Agriculture, forestry, fishing and mining	29,36	209,6	221,0	224,6	+1,6	+7,2
1.1 Agriculture	8,22	194,6	208,0	203,6	-2,1	+4,6
1.1.1 Food	3,89	166,6	174,9	171,8	-1,8	+3,1
Grain	0,87	224,3	283,1	274,3	-3,1	+22,3
Vegetables	1,13	115,7	118,3	121,3	+2,5	+4,8
Fruits and nuts	1,43	113,0	98,8	95,6	-3,2	-15,4
Oil seeds	0,13	360,7	382,3	380,1	-0,6	+5,4
Sugar cane	0,30	271,3	288,4	283,0	-1,9	+4,3
Other food	0,04	169,6	196,0	198,9	+1,5	+17,3
1.1.2 Live animals and animal products	3,68	222,8	241,5	234,4	-2,9	+5,2
Live animals	2,91	230,6	249,9	240,7	-3,7	+4,4
Milk	0,25	146,2	160,2	170,2	+6,2	+16,4
Eggs	0,35	250,5	262,8	254,6	-3,1	+1,6
Other raw animal products	0,17	208,5	243,8	241,9	-0,8	+16,0
1.1.3 Other agricultural products	0,65	255,9	280,5	282,2	+0,6	+10,3
1.2 Forestry	1,48	150,2	155,4	155,9	+0,3	+3,8
1.3 Fishing	0,25	262,1	275,5	275,9	+0,1	+5,3
1.4 Mining and quarrying	19,41	222,8	234,2	241,1	+2,9	+8,2
Coal and lignite	4,97	392,0	383,5	386,8	+0,9	-1,3
Crude petroleum and natural gas	0,62	83,4	98,5	100,3	+1,8	+20,3
Metal ores	11,48	184,0	193,1	202,9	+5,1	+10,3
Other minerals	2,34	136,7	192,9	191,1	-0,9	+39,8
2. Manufacturing	62,30	191,1	202,7	203,7	+0,5	+6,6
2.1 Food at manufacturing	5,87	203,3	223,0	225,5	+1,1	+10,9
Meat and meat products	0,56	231,6	282,9	284,5	+0,6	+22,8
Prepared and preserved fish	0,18	188,9	188,4	189,6	+0,6	+0,4
Fruits and vegetable products	0,56	165,5	173,3	174,5	+0,7	+5,4
Fats and oils	0,43	276,0	271,1	269,7	-0,5	-2,3
Dairy products	0,98	206,2	215,5	222,0	+3,0	+7,7
Grain mill products and bakery products	0,84	176,3	204,2	206,3	+1,0	+17,0
Sugar	0,44	180,1	181,1	185,9	+2,7	+3,2
Coffee and tea	0,16	190,5	200,4	200,4	0,0	+5,2
Other food products	1,72	199,6	227,0	228,6	+0,7	+14,5
2.2 Beverages	3,04	198,4	202,4	205,0	+1,3	+3,3
Alcoholic beverages	1,73	207,5	209,1	212,6	+1,7	+2,5
Non-alcoholic beverages	1,31	172,3	180,6	181,4	+0,4	+5,3
2.3 Tobacco products	0,59	264,9	285,3	296,1	+3,8	+11,8
2.4 Textile and made-up goods	1,06	148,8	155,0	154,8	-0,1	+4,0
Yarn and thread; woven and tufted textile fabrics (prepared for spinning)	0,35	164,2	176,8	175,3	-0,8	+6,8
Textile articles other than apparel	0,71	143,8	147,4	147,7	+0,2	+2,7
2.5 Wearing Apparel	1,48	129,0	135,3	135,3	0,0	+4,9
Knitted or crocheted fabrics	0,38	132,5	157,6	157,6	0,0	+18,9
Other wearing apparel	1,09	128,5	128,8	128,8	0,0	+0,2
2.6 Leather and leather products	0,32	112,3	122,1	122,1	0,0	+8,7
2.7 Footwear	0,27	156,2	163,3	165,5	+1,3	+6,0
2.8 Wood and wood products	1,40	193,8	201,3	203,2	+0,9	+4,9
2.9 Paper and paper products	4,96	181,1	187,0	188,9	+1,0	+4,3
Pulp, paper and paperboard	3,20	164,6	170,0	172,3	+1,4	+4,7
Printing, publishing and allied industries	1,77	192,9	199,1	199,7	+0,3	+3,5
2.10 Products of petroleum and coal	4,98	246,9	299,6	309,8	+3,4	+25,5

Table 8 - Producer Price Index for Domestic output of South African industry groups (concluded)
Base: 2000 = 100

Origin/Group	Weight	Indices			% change between	
		Feb 2011	Jan 2012	Feb 2012	Jan 2012 and Feb 2012	Feb 2011 and Feb 2012
2.11 Chemicals and chemical products	6,74	168,8	178,5	179,1	+0,3	+6,1
2.11.1 Basic Chemicals	3,81	174,5	189,2	189,4	+0,1	+8,5
Basic organic chemicals	0,73	228,5	273,5	272,5	-0,4	+19,3
Basic inorganic chemicals	1,92	149,5	161,1	161,7	+0,4	+8,2
Fertilisers and pesticides	0,41	204,8	217,6	217,9	+0,1	+6,4
Other basic chemicals	0,75	172,9	176,4	176,5	+0,1	+2,1
2.11.2 Compound chemical products	2,93	164,9	168,8	169,8	+0,6	+3,0
Paints, varnishes and related products; artists' colours; ink	1,49	201,4	203,4	205,6	+1,1	+2,1
Pharmaceutical products	0,36	137,9	139,8	139,8	0,0	+1,4
Soap, cleaning preparations, perfumes and toilet preparations	0,63	163,8	168,2	168,3	+0,1	+2,7
Other compound chemical products	0,45	202,9	221,7	221,4	-0,1	+9,1
2.12 Rubber and plastic products	2,59	187,5	197,1	197,6	+0,3	+5,4
Rubber products	1,13	223,2	237,1	237,1	0,0	+6,2
Plastic products	1,46	171,5	178,8	179,5	+0,4	+4,7
2.13 Non-metallic mineral products	1,97	216,9	219,5	220,2	+0,3	+1,5
Glass and glass products	0,04	187,9	196,9	203,5	+3,4	+8,3
Other non-metallic minerals products n.e.c.	1,93	230,0	232,6	233,3	+0,3	+1,4
2.14 Basic Metals	6,66	260,9	269,6	264,2	-2,0	+1,3
Basic iron and steel	4,12	325,2	337,0	327,8	-2,7	+0,8
Rolled, drawn and folded products	2,54	167,8	172,0	172,6	+0,3	+2,9
2.15 Metal products	3,34	188,1	206,7	205,2	-0,7	+9,1
Structural metal products and parts thereof	1,27	198,2	222,8	223,2	+0,2	+12,6
Other fabricated metal products	2,07	181,6	197,1	194,5	-1,3	+7,1
2.16 Non-electrical machinery and equipment	2,35	179,8	185,1	186,4	+0,7	+3,7
General purpose machinery	1,99	173,2	178,7	180,1	+0,8	+4,0
Special purpose machinery	0,24	149,8	150,8	150,8	0,0	+0,7
Domestic appliances and parts thereof	0,12	138,1	138,4	137,2	-0,9	-0,7
2.17 Office, accounting and computing machinery	0,20	100,4	107,8	104,5	-3,1	+4,1
2.18 Electrical machinery and apparatus	1,93	224,6	222,5	226,4	+1,8	+0,8
Electric motors, generators and transformers, and parts thereof	0,07	284,9	276,2	280,1	+1,4	-1,7
Electricity distribution and control apparatus, and parts thereof	0,87	156,2	159,4	159,5	+0,1	+2,1
Insulated wire and cable; optical fibre cables	0,72	318,4	308,0	316,6	+2,8	-0,6
Other electrical machinery and apparatus	0,26	148,4	153,8	158,4	+3,0	+6,7
2.19 Radio, television and communication equipment and parts thereof	0,48	130,9	124,2	124,9	+0,6	-4,6
2.20 Medical appliances, precision and optical instruments, watches and clocks	0,29	149,1	152,8	152,7	-0,1	+2,4
2.21 Transport	5,83	147,5	146,8	147,0	+0,1	-0,3
2.21.1 Motor vehicles, parts and accessories thereof	2,12	147,5	152,1	152,4	+0,2	+3,3
Motor vehicles	2,11	144,2	148,7	149,0	+0,2	+3,3
Parts and accessories for motor vehicles	0,01	185,9	187,2	204,2	+9,1	+9,8
2.21.2 Bodies (coachwork) for motor vehicles, trailers and semi-trailers; parts	0,09	121,8	123,2	123,5	+0,2	+1,4
Bodies for motor vehicles	0,03	157,9	166,1	166,1	0,0	+5,2
Trailers, semi-trailer and containers	0,04	121,6	119,1	119,7	+0,5	-1,6
Parts for motor vehicles bodies, trailers, semi-trailers and containers	0,01	121,8	121,8	121,8	0,0	0,0
2.21.3 Other transport equipment	3,62	118,3	114,6	114,6	0,0	-3,1
2.22 Furniture	1,01	158,0	163,5	163,7	+0,1	+3,6
2.23 Other manufactures	4,95	154,9	168,0	169,6	+1,0	+9,5
3. Electricity, gas, steam and water	8,33	210,5	256,7	258,5	+0,7	+22,8
Electricity	6,86	219,2	275,1	277,5	+0,9	+26,6
Water and gas	1,47	266,3	287,0	287,0	0,0	+7,8

Table 9 Producer Price Index for exported commodities according to group
Base: 2000 = 100

Origin/Group	Weight	Indices			% change between	
		Feb 2011	Jan 2012	Feb 2012	Jan 2012 and Feb 2012	Feb 2011 and Feb 2012
All groups	100,00	172,6	183,4	182,8	-0,3	+5,9
1. Agriculture, forestry, fishing and mining	30,34	197,2	222,9	222,0	-0,4	+12,6
1.1 Agriculture	1,62	142,3	141,5	141,1	-0,3	-0,8
1.1.1 Food	1,50	134,8	133,5	132,5	-0,7	-1,7
Grain	0,19	188,8	191,1	191,1	0,0	+1,2
Vegetables	0,31	95,3	95,3	95,3	0,0	0,0
Fruits and nuts	0,95	60,2	58,4	57,5	-1,5	-4,5
Oil seeds	0,03	100,1	100,1	100,1	0,0	0,0
Sugar cane	0,02	100,0	100,0	100,0	0,0	0,0
1.1.2 Live animals and animal products	0,04	308,8	331,8	321,5	-3,1	+4,1
Live animals	0,01	100,0	100,0	100,0	0,0	0,0
Other raw animal products	0,03	206,4	224,6	216,4	-3,7	+4,8
1.1.3 Other agricultural products	0,08	159,7	158,3	168,1	+6,2	+5,3
1.2 Forestry	0,09	98,6	100,6	100,6	0,0	+2,0
1.3 Fishing	0,06	228,7	238,3	230,6	-3,2	+0,8
1.4 Mining and quarrying	28,57	202,7	229,8	228,9	-0,4	+12,9
Coal and lignite	6,22	298,2	326,3	317,6	-2,7	+6,5
Metal ores	19,82	182,0	201,9	203,8	+0,9	+12,0
Other minerals	2,53	141,2	225,1	218,1	-3,1	+54,5
2. Manufacturing	69,66	161,5	165,3	164,8	-0,3	+2,0
2.1 Food at manufacturing	2,20	163,9	154,7	156,1	+0,9	-4,8
Meat and meat products	0,09	119,8	122,7	122,7	0,0	+2,4
Prepared and preserved fish	0,24	145,4	156,6	156,6	0,0	+7,7
Fruits and vegetable products	0,63	134,9	128,3	134,3	+4,7	-0,4
Fats and oils	0,09	199,4	199,4	199,4	0,0	0,0
Dairy products	0,03	143,1	143,1	143,1	0,0	0,0
Grain mill products and bakery products	0,07	219,7	235,0	245,2	+4,3	+11,6
Sugar	0,78	160,3	145,6	145,8	+0,1	-9,0
Other food products	0,27	173,8	175,3	175,3	0,0	+0,9
2.2 Beverages	1,55	131,5	120,8	120,8	0,0	-8,1
Alcoholic beverages	1,39	132,4	120,1	120,1	0,0	-9,3
Non-alcoholic beverages	0,16	121,0	121,0	121,0	0,0	0,0
2.3 Tobacco products	0,19	180,8	180,8	180,8	0,0	0,0
2.4 Textile and made-up goods	0,56	179,9	189,5	189,5	0,0	+5,3
Yarn and thread; woven and tufted textile fabrics (prepared for spinning)	0,03	250,0	306,4	306,4	0,0	+22,6
Textile articles other than apparel	0,53	119,3	123,9	123,9	0,0	+3,9
2.5 Wearing Apparel	0,19	111,4	114,7	115,7	+0,9	+3,9
Knitted or crocheted fabrics	0,14	118,3	118,3	118,3	0,0	0,0
Other wearing apparel	0,06	115,8	127,3	130,7	+2,7	+12,9
2.6 Leather and leather products	0,29	98,3	98,3	98,3	0,0	0,0
2.7 Footwear	0,04	166,7	166,7	166,7	0,0	0,0
2.8 Wood and wood products	0,83	181,8	178,9	178,9	0,0	-1,6
2.9 Paper and paper products	1,80	148,1	146,0	147,2	+0,8	-0,6
Pulp, paper and paperboard	1,52	154,4	151,7	153,2	+1,0	-0,8
Printing, publishing and allied industries	0,28	114,8	115,4	115,4	0,0	+0,5
2.10 Products of petroleum and coal	2,37	252,5	259,7	260,7	+0,4	+3,2

Table 9 - Producer Price Index for exported commodities according to group (concluded)
Base: 2000 = 100

	Weight	Indices			% change between	
		Feb 2011	Jan 2012	Feb 2012	Jan 2012 and Feb 2012	Feb 2011 and Feb 2012
2.11 Chemicals and chemical products	5,14	122,4	137,4	137,4	0,0	+12,3
2.11.1 Basic Chemicals	3,94	122,2	140,7	140,7	0,0	+15,1
Basic organic chemicals	0,81	257,4	257,4	257,4	0,0	0,0
Basic inorganic chemicals	2,10	96,4	140,0	140,0	0,0	+45,2
Other basic chemicals	1,03	136,8	136,8	136,8	0,0	0,0
2.11.2 Compound chemical products	1,21	127,4	131,2	131,2	0,0	+3,0
Paints, varnishes and related products; artists' colours; ink	0,03	173,9	173,9	173,9	0,0	0,0
Soap, cleaning preparations, perfumes and toilet preparations	0,76	140,5	141,9	141,9	0,0	+1,0
Other compound chemical products	0,41	152,0	164,7	164,7	0,0	+8,4
2.12 Rubber and plastic products	0,90	149,6	150,1	149,3	-0,5	-0,2
Rubber products	0,50	186,0	186,1	186,1	0,0	+0,1
Plastic products	0,40	112,1	113,0	111,4	-1,4	-0,6
2.13 Non-metallic mineral products	0,67	143,7	144,5	145,8	+0,9	+1,5
Other non-metallic minerals products n.e.c.	0,67	143,7	144,5	145,8	+0,9	+1,5
2.14 Basic Metals	33,23	196,7	201,5	200,3	-0,6	+1,8
Basic iron and steel	7,33	245,6	246,3	239,6	-2,7	-2,4
Rolled, drawn and folded products	4,32	100,7	98,5	98,5	0,0	-2,2
Other non-ferrous basic metals and articles	21,58	190,8	203,2	203,8	+0,3	+6,8
2.15 Metal products	1,31	168,1	174,4	176,4	+1,1	+4,9
Structural metal products and parts thereof	0,54	186,3	181,3	181,3	0,0	-2,7
Other fabricated metal products	0,77	149,6	166,8	170,7	+2,3	+14,1
2.16 Non-electrical machinery and equipment	5,73	138,4	142,3	140,9	-1,0	+1,8
General purpose machinery	2,35	131,0	134,4	134,4	0,0	+2,6
Special purpose machinery	1,61	145,3	146,2	146,1	-0,1	+0,6
Domestic appliances and parts thereof	1,76	133,0	139,2	134,9	-3,1	+1,4
2.17 Office, accounting and computing machinery	0,23	99,7	107,6	108,6	+0,9	+8,9
2.18 Electrical machinery and apparatus	0,83	139,8	138,4	139,8	+1,0	0,0
Electric motors, generators and transformers, and parts thereof	0,10	169,0	169,0	169,0	0,0	0,0
Electricity distribution and control apparatus, and parts thereof	0,15	141,4	141,4	141,4	0,0	0,0
Insulated wire and cable; optical fibre cables	0,25	178,4	173,2	178,4	+3,0	0,0
Other electrical machinery and apparatus	0,34	120,1	120,1	120,1	0,0	0,0
2.19 Radio, television and communication equipment and parts thereof	1,14	100,8	100,8	100,8	0,0	0,0
2.20 Medical appliances, precision and optical instruments, watches and clocks	0,54	141,0	145,1	145,1	0,0	+2,9
2.21 Transport	7,33	120,2	122,8	122,8	0,0	+2,2
2.21.1 Motor vehicles, parts and accessories thereof	1,63	120,0	121,1	121,1	0,0	+0,9
Motor vehicles	1,28	104,3	104,3	104,3	0,0	0,0
Parts and accessories for motor vehicles	0,35	136,0	142,7	142,7	0,0	+4,9
2.21.2 Bodies (coachwork) for motor vehicles, trailers and semi-trailers; parts	1,68	137,3	149,0	149,0	0,0	+8,5
Trailers, semi-trailer and containers	0,71	101,0	101,0	101,0	0,0	0,0
Parts for motor vehicles bodies, trailers, semi-trailers and containers	0,97	162,2	183,6	183,6	0,0	+13,2
2.21.3 Other transport equipment	4,03	106,8	106,4	106,4	0,0	-0,4
2.22 Furniture	1,04	100,1	100,1	100,1	0,0	0,0
2.23 Other manufactures	1,53	101,5	100,5	100,6	+0,1	-0,9

Table 10 - Producer Price Index for imported commodities according to group
Base: 2000 = 100

	Weight	Indices			% change between	
		Feb 2011	Jan 2012	Feb 2012	Jan 2012 and Feb 2012	Feb 2011 and Feb 2012
All groups	100,00	157,3	178,2	177,7	-0,3	+13,0
1. Agriculture, forestry, fishing and mining	16,75	292,1	399,3	396,2	-0,8	+35,6
1.1 Agriculture	0,93	158,9	154,2	154,4	+0,1	-2,8
1.1.1 Food	0,53	156,6	147,5	148,3	+0,5	-5,3
Grain	0,40	138,4	122,1	123,1	+0,8	-11,1
Vegetables	0,01	73,3	149,3	143,3	-4,0	+95,5
Fruits and nuts	0,03	171,0	196,6	196,6	0,0	+15,0
Oil seeds	0,03	100,0	100,0	100,0	0,0	0,0
Other food	0,06	373,4	379,4	383,5	+1,1	+2,7
1.1.2 Live animals and animal products	0,06	122,9	122,9	122,9	0,0	0,0
Live animals	0,02	105,8	105,8	105,8	0,0	0,0
Other raw animal products	0,04	175,0	175,0	175,0	0,0	0,0
1.1.3 Other agricultural products	0,33	147,7	151,4	150,5	-0,6	+1,9
1.2 Forestry	0,01	101,3	101,3	101,3	0,0	0,0
1.3 Fishing	0,08	101,3	101,3	101,3	0,0	0,0
1.4 Mining and quarrying	15,73	318,8	439,5	436,1	-0,8	+36,8
Coal and lignite	0,02	144,5	171,9	171,9	0,0	+19,0
Crude petroleum and natural gas	12,84	357,5	491,8	488,9	-0,6	+36,8
Metal ores	0,76	96,4	96,6	96,4	-0,2	0,0
Other minerals	2,11	312,9	480,3	460,9	-4,0	+47,3
2. Manufacturing	83,25	137,5	140,5	140,5	0,0	+2,2
2.1 Food at manufacturing	3,24	173,5	181,8	180,7	-0,6	+4,1
Meat and meat products	0,70	191,3	223,7	216,5	-3,2	+13,2
Prepared and preserved fish	0,07	121,1	121,1	121,1	0,0	0,0
Fruits and vegetable products	0,06	156,0	156,0	156,0	0,0	0,0
Fats and oils	0,96	218,1	216,9	218,5	+0,7	+0,2
Dairy products	0,13	167,7	179,9	180,2	+0,2	+7,5
Grain mill products and bakery products	0,72	149,3	163,2	161,1	-1,3	+7,9
Sugar	0,05	174,5	174,5	174,5	0,0	0,0
Coffee and tea	0,02	139,7	139,7	139,7	0,0	0,0
Other food products	0,52	138,6	133,9	134,9	+0,7	-2,7
2.2 Beverages	0,58	160,5	157,8	157,8	0,0	-1,7
Alcoholic beverages	0,36	167,1	163,2	163,2	0,0	-2,3
Non-alcoholic beverages	0,23	109,6	109,6	109,6	0,0	0,0
2.3 Tobacco products	0,05	122,5	122,5	122,5	0,0	0,0
2.4 Textile and made-up goods	1,35	119,2	121,1	121,6	+0,4	+2,0
Yarn and thread; woven and tufted textile fabrics (prepared for spinning)	0,95	111,1	111,7	112,4	+0,6	+1,2
Textile articles other than apparel	0,40	133,8	139,1	139,1	0,0	+4,0
2.5 Wearing Apparel	0,76	121,7	124,7	124,7	0,0	+2,5
Knitted or crocheted fabrics	0,46	119,9	124,4	124,4	0,0	+3,8
Other wearing apparel	0,30	124,7	124,7	124,7	0,0	0,0
2.6 Leather and leather products	0,41	133,4	133,4	146,5	+9,8	+9,8
2.7 Footwear	0,67	122,7	127,9	129,3	+1,1	+5,4
2.8 Wood and wood products	0,63	139,6	143,2	144,6	+1,0	+3,6
2.9 Paper and paper products	1,87	128,5	133,6	133,8	+0,1	+4,1
Pulp, paper and paperboard	1,32	128,8	134,6	134,8	+0,1	+4,7
Printing, publishing and allied industries	0,55	129,7	132,6	133,1	+0,4	+2,6
2.10 Products of petroleum and coal	2,20	118,7	122,1	122,1	0,0	+2,9

Table 10 - Producer Price Index for imported commodities according to group (concluded)
Base: 2000 = 100

Origin/Group	Weight	Indices			% change between	
		Feb 2011	Jan 2012	Feb 2012	Jan 2012 and Feb 2012	Feb 2011 and Feb 2012
2.11 Chemicals and chemical products	10,65	162,7	168,8	168,9	+0,1	+3,8
2.11.1 Basic Chemicals	6,29	182,3	192,8	193,0	+0,1	+5,9
Basic organic chemicals	3,26	178,4	186,3	186,9	+0,3	+4,8
Basic inorganic chemicals	0,88	120,3	120,3	120,3	0,0	0,0
Fertilisers and pesticides	0,82	209,9	209,9	209,9	0,0	0,0
Other basic chemicals	1,33	186,8	210,6	210,4	-0,1	+12,6
2.11.2 Compound chemical products	4,36	143,7	143,8	143,8	0,0	+0,1
Paints, varnishes and related products; artists' colours; ink	0,34	146,8	146,8	147,1	+0,2	+0,2
Pharmaceutical products	0,89	136,3	136,4	136,4	0,0	+0,1
Soap, cleaning preparations, perfumes and toilet preparations	0,53	138,8	140,2	140,2	0,0	+1,0
Other compound chemical products	2,60	145,2	145,1	144,9	-0,1	-0,2
2.12 Rubber and plastic products	2,44	122,0	122,1	122,1	0,0	+0,1
Rubber products	0,96	125,1	125,3	125,4	+0,1	+0,2
Plastic products	1,48	120,2	120,2	120,2	0,0	0,0
2.13 Non-metallic mineral products	1,57	137,5	138,2	138,5	+0,2	+0,7
Glass and glass products	0,03	141,4	146,3	146,3	0,0	+3,5
Other non-metallic minerals products n.e.c.	1,54	145,7	146,4	146,7	+0,2	+0,7
2.14 Basic Metals	3,70	186,3	183,3	184,2	+0,5	-1,1
Basic iron and steel	0,77	154,4	154,4	154,4	0,0	0,0
Rolled, drawn and folded products	1,24	166,9	167,0	167,0	0,0	+0,1
Other non-ferrous basic metals and articles	1,69	209,0	202,8	204,5	+0,8	-2,2
2.15 Metal products	2,06	134,4	127,2	127,8	+0,5	-4,9
Structural metal products and parts thereof	0,09	109,4	109,4	109,4	0,0	0,0
Other fabricated metal products	1,97	136,7	129,1	129,8	+0,5	-5,0
2.16 Non-electrical machinery and equipment	14,01	138,4	141,6	141,8	+0,1	+2,5
General purpose machinery	7,98	153,1	155,6	156,0	+0,3	+1,9
Special purpose machinery	4,64	127,3	128,3	128,3	0,0	+0,8
Domestic appliances and parts thereof	1,40	129,8	145,2	145,3	+0,1	+11,9
2.17 Office, accounting and computing machinery	5,42	76,2	84,4	82,3	-2,5	+8,0
2.18 Electrical machinery and apparatus	2,95	130,5	136,4	136,3	-0,1	+4,4
Electric motors, generators and transformers, and parts thereof	0,58	104,1	103,7	103,7	0,0	-0,4
Electricity distribution and control apparatus, and parts thereof	0,75	132,5	143,7	143,7	0,0	+8,5
Insulated wire and cable; optical fibre cables	0,28	210,2	218,7	218,8	0,0	+4,1
Other electrical machinery and apparatus	1,34	130,1	135,8	135,7	-0,1	+4,3
2.19 Radio, television and communication equipment and parts thereof	9,81	95,2	95,8	95,9	+0,1	+0,7
2.20 Medical appliances, precision and optical instruments, watches and clocks	3,34	125,1	128,0	128,3	+0,2	+2,6
Medical and surgical equipment and orthopaedic appliances	3,16	124,6	127,5	127,8	+0,2	+2,6
Watches and clocks, and parts thereof	0,18	132,5	135,6	135,6	0,0	+2,3
2.21 Transport	13,45	147,9	149,4	149,3	-0,1	+0,9
2.21.1 Motor vehicles, parts and accessories thereof	2,83	155,3	155,8	155,8	0,0	+0,3
Motor vehicles	2,73	107,7	108,1	108,1	0,0	+0,4
Parts and accessories for motor vehicles	0,11	158,6	158,6	158,6	0,0	0,0
2.21.2 Bodies (coachwork) for motor vehicles, trailers and semi-trailers; parts	1,63	159,5	169,6	169,3	-0,2	+6,1
Trailers, semi-trailer and containers	0,70	115,0	130,9	130,9	0,0	+13,8
Parts for motor vehicles bodies, trailers, semi-trailers and containers	0,93	162,7	164,9	164,5	-0,2	+1,1
2.21.3 Other transport equipment	8,99	111,8	111,5	111,5	0,0	-0,3
2.22 Furniture	0,64	92,6	92,9	92,9	0,0	+0,3
2.23 Other manufactures	1,44	123,1	123,5	123,6	+0,1	+0,4

Table 11 - Producer Price Index for materials used in certain industries

Base 2000=100

Industry	Indices			% change between	
	Feb 2011	Jan 2012	Feb 2012	Jan 2012 and Feb 2012	Feb 2011 and Feb 2012
Building and construction	222,5	234,9	237,0	+0,8	+6,5
Building industries	223,4	232,9	234,7	+0,7	+5,0
Civil engineering	215,9	224,5	226,6	+0,9	+4,9
Electrical engineering	189,5	193,3	194,6	+0,6	+2,6
Mechanical engineering	195,9	201,5	201,4	-0,0	+2,8

Table 12 - Producer Price Index for selected materials

Base : 2000 = 100

Type of materials	Indices			% change between		
	Feb 2011	Jan 2012	Feb 2012	Jan 2012 and Feb 2012	Feb 2011 and Feb 2012	
Aggregated crushed stone	291,5	292,6	306,3	+4,6	+5,0	
Aluminium	Anodising	167,1	177,1	177,1	0,0	+5,9
	Basic forms	174,4	173,5	173,9	+0,2	-0,2
	Extruded products	246,1	246,1	246,1	0,0	0,0
	Sheeting	253,8	260,6	245,6	-5,7	-3,2
Aluminium lever furniture	186,4	186,4	186,4	0,0	0,0	
Angles, mild steel	284,6	297,7	297,7	0,0	+4,6	
Bead wire	193,6	193,6	193,6	0,0	0,0	
Bearings, ball and roller	263,2	299,7	300,3	+0,2	+14,0	
Billets, mild steel	310,1	314,9	314,9	0,0	+1,5	
Bitumen	360,8	491,7	499,4	+1,5	+38,4	
Bitumen and Acrylic Emulsion	225,5	239,0	239,0	0,0	+5,9	
Boxes, corrugated cardboard	168,1	174,9	174,7	-0,1	+3,9	
Bricks - Face	259,7	280,3	280,9	+0,2	+8,1	
Bricks - Stock	274,1	291,1	291,0	-0,0	+6,1	
Building boards	170,7	172,0	173,0	+0,5	+1,3	
Ceiling materials	252,3	273,9	273,9	0,0	+8,5	
Cement Retail price	263,5	277,9	288,7	+3,8	+9,5	
Cement building blocks	284,7	288,6	289,3	+0,2	+1,6	
Ceramic and encaustic wall and floor tiles and mosaics	120,1	120,5	120,5	0,0	+0,3	
Chrome	105,5	109,4	109,4	0,0	+3,6	
Civil engineering plant	186,6	188,6	189,4	+0,4	+1,5	
Coal, Anthracite - for local sales Grade A	103,5	113,9	113,9	0,0	+10,0	
Coal, Anthracite - for local sales Grade SP	121,4	123,5	119,2	-3,4	-1,8	
Coal, Cobbles - grade A	393,8	393,8	393,8	0,0	0,0	
Coal, Cobbles - grade B	316,6	316,6	316,6	0,0	0,0	
Coal, Large nuts - grade A	146,7	146,7	146,7	0,0	0,0	
Coal, Large nuts - grade B	280,3	280,3	280,3	0,0	0,0	
Coal, Peas - grade A	481,8	518,2	504,6	-2,6	+4,7	
Coal, Peas - grade B	535,1	531,4	531,4	0,0	-0,6	
Coal, Small nuts - grade A	576,7	645,6	698,2	+8,1	+21,0	
Coal, Small nuts - grade B	383,1	365,7	365,7	0,0	-4,5	
Coal, bituminous	381,7	375,0	378,3	+0,8	-0,8	
Coal, bituminous - for local sales	492,7	484,2	488,4	+0,8	-0,8	
Coated profiled GMS sheeting (roofing)	220,4	245,6	245,6	0,0	+11,4	
Concrete pipes	160,9	167,5	170,4	+1,7	+5,9	
Concrete roof tiles	293,3	286,8	293,0	+2,1	-0,1	
Construction machinery (excluding trucks)	148,4	150,5	150,7	+0,1	+1,5	
Containers, glass	188,9	214,9	227,3	+5,7	+20,3	
Copper Piping	288,0	274,0	274,0	0,0	-4,8	
Copper, basic forms	362,5	359,2	359,2	0,0	-0,9	
Coumarone indene resin (imported)	195,7	187,9	187,9	0,0	-3,9	
Craft paper	177,3	177,3	177,3	0,0	0,0	
Cylinder lock set	218,0	218,0	218,0	0,0	0,0	
Diesel at wholesale level	Coast	319,9	402,7	402,3	-0,0	+25,7
	Witwatersrand	322,9	407,4	407,4	0,0	+26,1
Diesel fuel	Coast and Witwatersrand	350,9	409,3	409,0	-0,0	+16,5
	Retail Metropolitan and other urban areas	306,4	361,2	359,0	-0,6	+17,1
	Retail Metropolitan areas	238,4	261,8	258,0	-1,4	+8,2
Drainage	142,0	141,7	141,7	0,0	-0,2	
Drop in ceiling tiles-gypsum	185,7	192,2	192,2	0,0	+3,5	
Drop-in ceiling tiles - masonite	236,7	255,1	255,1	0,0	+7,7	
Electrical contracting materials	222,8	227,0	227,7	+0,3	+2,1	
Enamel paints	216,5	236,4	245,8	+3,9	+13,5	
Extruded aluminium distributor level	166,9	171,7	171,7	0,0	+2,8	
Extruded aluminium section	246,5	246,5	246,5	0,0	0,0	
Ferro-chromium	464,8	465,6	452,3	-2,8	-2,6	
Fibre cement roof sheet	250,0	269,8	280,9	+4,1	+12,3	
Fibrous insulation	Batten board	216,5	216,5	216,5	0,0	0,0
	Ceiling insulation	169,0	181,7	181,7	0,0	+7,5
	Mattresses	235,1	250,5	244,7	-2,3	+4,0
	Preformed pipe sections	162,4	162,4	162,4	0,0	0,0
Flush doors	279,6	293,6	306,8	+4,4	+9,7	

Type of materials	Indices			% change between	
	Feb 2011	Jan 2012	Feb 2012	Jan 2012 and Feb 2012	Feb 2011 and Feb 2012
Foam insulation materials	243,3	255,5	255,5	0,0	+5,0
		Polyurethane			
	243,3	255,5	255,5	0,0	+5,0
Gasses industrial	188,6	190,1	190,6	+0,2	+1,0
Glass for the building industry cut to size	208,8	210,0	210,0	0,0	+0,5
Glass, for building industry	139,9	147,9	148,5	+0,4	+6,1
Gypsum board	219,2	230,4	230,4	0,0	+5,1
Hinges	160,4	174,5	172,7	-1,0	+7,6
Imported Meranti	100,2	118,8	118,8	0,0	+18,5
Insulator, porcelain	178,0	178,0	178,0	0,0	0,0
Ironmongery	179,0	188,6	188,1	-0,2	+5,0
Joint Sealants	202,2	213,9	213,9	0,0	+5,7
Leather, bovine hide	179,0	179,0	179,0	0,0	0,0
Lever locks	205,1	204,5	205,1	+0,2	0,0
Materials	265,1	299,8	304,2	+1,4	+14,7
		Concrete works			
	257,9	287,7	290,5	+0,9	+12,6
		Roads and earthworks			
	272,2	312,0	318,0	+1,9	+16,8
Mining machinery	163,2	165,9	165,9	0,0	+1,6
Modified Bitumen sheeting	228,3	235,7	235,8	+0,0	+3,2
Natural stone, cut and sawn	141,4	145,3	145,9	+0,4	+3,1
Oils and lubricants	303,0	466,8	541,6	+16,0	+78,7
Ordinary and extended cement	296,1	290,9	289,5	-0,4	-2,2
PVC Pipes	149,1	155,2	155,2	0,0	+4,0
Paints	212,8	218,5	226,9	+3,8	+6,6
Paper, newsprint	243,7	240,3	245,3	+2,0	+0,6
Partitioning materials	252,3	273,9	273,9	0,0	+8,5
Petro-chemical building materials	231,1	243,1	243,3	+0,0	+5,2
Petrol, 93 octane (Coast/ Witwaterand)	277,9	301,7	314,5	+4,2	+13,1
Plain cut paper A4	156,7	158,1	158,4	+0,1	+1,1
Plant	196,5	204,3	205,0	+0,3	+4,3
		Concrete works			
	202,7	213,7	214,7	+0,4	+5,9
		Roads and earthworks			
	190,4	194,9	195,3	+0,2	+2,5
Plastic :HDPE,LDPE,PVC,polypropylene	194,7	192,1	192,0	-0,0	-1,4
Plastic bottles	254,0	268,3	270,0	+0,6	+6,2
Plastic, bulk forms	194,1	195,7	195,8	+0,0	+0,8
Plate, mild steel	220,4	245,6	245,6	0,0	+11,4
Plumbing	181,8	185,1	185,1	0,0	+1,8
Polybutadiene	303,0	390,5	390,5	0,0	+28,8
Processing oil	197,8	281,6	285,8	+1,4	+44,4
Products of alumina	241,8	226,4	226,4	0,0	-6,3
Profiled aluminium roofing	206,4	205,4	209,8	+2,1	+1,6
Profiled aluminium roofing - distributor level	151,5	154,0	157,0	+1,9	+3,6
Reinforcing steel	281,6	357,5	357,5	0,0	+26,9
Resilient floor coverings	214,4	216,6	216,6	0,0	+1,0
Rubber crude	182,9	241,6	241,6	0,0	+32,0
		Rubber crude Synthetic			
	232,4	318,9	318,9	0,0	+37,2
		Rubber crude Synthetic Local			
	232,4	318,9	318,9	0,0	+37,2
Rubber industry's indices	285,6	350,6	350,6	0,0	+22,7
		Carbon black - N660			
	319,4	390,3	390,3	0,0	+22,1
		Carbon black - N774			
	446,0	472,5	455,3	-3,6	+2,0
SA Pine, kiln dried	247,0	251,8	252,6	+0,3	+2,2
Sand	171,9	176,5	190,2	+7,7	+10,6
Self-Adhesive sheeting	201,6	190,7	190,7	0,0	-5,4
Sementitious paints	225,1	241,1	241,1	0,0	+7,1
Sheet, galvanized	225,8	251,5	251,5	0,0	+11,3
Sheet, uncoated	285,2	285,2	285,2	0,0	0,0
Small steel sections	190,2	190,2	190,2	0,0	0,0
Stainless steel products, flat rolled	207,9	219,3	219,3	0,0	+5,4
Steel tubes, pipes and fittings	142,8	141,7	141,7	0,0	-0,7
Structural steel products	292,5	299,7	299,7	0,0	+2,4
Structural steel, unworked	349,3	351,2	351,2	0,0	+0,5
Sulphuric acid	207,6	180,7	180,7	0,0	-12,9
Synthetic rubber		1502			
	277,9	316,9	316,9	0,0	+14,0
		1712			
	274,0	336,0	336,0	0,0	+22,6
Tar	215,5	255,5	258,0	+0,9	+19,7
Tile adhesives	277,8	287,3	287,3	0,0	+3,4
Tinplate	198,3	252,1	252,1	0,0	+27,1
Transformer oil	278,6	304,6	312,4	+2,5	+12,1
Trucks	162,8	168,9	169,5	+0,3	+4,1

Type of materials	Indices			% change between	
	Feb 2011	Jan 2012	Feb 2012	Jan 2012 and Feb 2012	Feb 2011 and Feb 2012
Trucks and buses	162,2	167,2	167,8	+0,3	+3,4
Tyres and tubes	239,0	251,6	251,6	0,0	+5,2
Tyres for giant vehicles	222,4	227,9	227,9	0,0	+2,4
Vinyl sheeting flooring	202,4	202,4	202,4	0,0	0,0
Vinyl tiles flooring	235,8	235,8	250,0	+6,0	+6,0
Wash and basin	176,4	182,5	189,1	+3,6	+7,1
Water-closet system (WC`s)	185,4	191,6	191,6	0,0	+3,3
Waterproofing	212,4	234,2	238,5	+1,8	+12,2
White glazed ceramic tiles	216,2	216,1	216,1	0,0	-0,0
Wood products, excluding mine wood	194,5	199,6	201,8	+1,1	+3,7
Wool, auction prices, 18 types	266,9	291,8	291,3	-0,1	+9,1
Woven needle punch carpeting	262,0	262,0	262,0	0,0	0,0

Note: Stats SA wishes to improve the coverage and relevance of Table 12: PPI for selected materials. We therefore invite users to provide us with requests and suggestions. Please direct your contribution to: maraisk@statssa.gov.za

NOTES

Forthcoming issues

Issue	Expected date of publication
March 2012	26 April 2012
April 2012	31 May 2012
May 2012	28 June 2012
June 2012	26 July 2012
July 2012	30 August 2012
August 2012	27 September 2012

Purpose of the survey

The surveys of prices of commodities in domestic output (including exports), imported commodities, and exported commodities are monthly surveys covering samples of manufacturers, importers and exporters in the South African economy. The results of the survey are used to compile the Producer Price Index (PPI) which indicates changes in Producer prices of locally produced commodities (including exports), imports and exports. These statistics are used by the private sector for contract price adjustments, and as a deflator in the compilation of national accounts.

Rebasing

The base year of the Producer Price Index (PPI) is still 2000 = 100. For historical rebasing see the statistical release P0142.4.

Special Data Dissemination Standard (SDDS) of the International Monetary Fund (IMF)

South Africa's data dissemination practices are assessed against the IMF's Special Data Dissemination Standard (SDDS). A detailed description of the SDDS can be found on the IMF's Dissemination Standards Bulletin Board on the internet at <http://dsbb.imf.org>. The SDDS prescribes two to four monitorable elements or good practice that can be observed, or monitored, by users of statistics. These include coverage, periodicity and timeliness, and access to a scheduled release calendar. The SDDS in essence sets standards for the disclosure and transparency of statistics.

South Africa subscribed to the SDDS in 2 August 1996 and posted its metadata as of 27 September 1996. South Africa has met the SDDS specifications for the coverage, periodicity and timeliness of the data, and for the dissemination of advanced release calendars since 18 September 2000.

Stats SA is responsible for compiling and disseminating data on the producer price index, national accounts, government accounts, industry-based statistics, social statistics, the producer price index, consumer price index, labour market and population statistics.

Reports on Observance of Standards and Codes (ROSC) of the International Monetary Fund (IMF)

The IMF has worked on producing ROSC as a step to strengthen the international financial system. The objectives of ROSC include the promotion of increased transparency, and the implementation of internationally accepted standards and codes.

The data dissemination module of the ROSC provides a summary of South Africa's practices on the coverage, periodicity and timeliness of the data categories specified in the IMF's SDDS, and on the practices on the provision of advance release calendars for the data. The ROSC is complemented by an assessment of the quality of the Producer Price Index, using the Data Quality Assessment Framework (DQAF) as developed by the IMF's Statistics Department.

The DQAF assess data quality in terms of -

- Prerequisites of quality;
- Integrity;
- Methodological soundness;
- Accuracy and reliability;
- Serviceability; and
- Accessibility

For South Africa's compliance and performance on the quality of data see <http://www.imf.org/external/np/rosc/rosc.asp>.

Methodological notes Stats SA released a new re-weighted PPI in January 2008 using a revised basket of indicator products.

The new basket of indicator products for locally produced commodities, import and export commodities was compiled through use of several information sources. The information sources used to select relevant indicator products in the different industries are indicated in table A.

Table A – Information sources used to select products in different producer industries

Main products and industries	Sources
Locally produced items	
Agriculture Fishing Forestry	Stats SA, Census of Agriculture, 2005 Fishing Industry Handbook, 2005 Commercial Timber Resources and Roundwood Processing in South Africa, 2005
Mining and quarrying Manufacturing	Department of Mineral Resources Stats SA, Large Sample Survey, 2005
Electricity Gas	Stats SA, Department Energy Stats SA, Economic Activity Survey, 2005
Water	Department of Water Affairs
Imported items	South African Revenue Services
Exported items	South African Revenue Services

The products were classified according to the relevant Central Product Classification (CPC) and at industry level were classified using Standard Industrial Classification (SIC) subgroups. At industry level, value added was used to determine industry weights. At product level, the products in each subgroup were sorted according to their value of sales. The products contributing to the top 80% of the sales in each subgroup were selected as indicator products. These are the products for which prices will be monitored periodically by Stats SA.

The questionnaire(s) for each subgroup, which are used to collect the relevant price information from respondents, were adjusted to include the newly selected indicator products. Although the products on each questionnaire differ from the other questionnaires, their layout is identical.

For each indicator product a sample of manufacturers, importers and exporters was drawn from all the manufacturers, importers and exporters who manufacture, import or export the specific indicator product. The list of manufacturers, importers and exporters (sampling frame), from which the samples were drawn, are indicated in table B.

Table B – Sampling frame

Main products and industries	Sources
Locally produced and sold products	
Agriculture	List of fresh produce markets
Mining and quarrying	List of mines
Forestry	List obtained from Department Agriculture, Forestry and Fishing Old sample of PPI
Fishing	Old sample of PPI List obtained from other sources
Manufacturing	List of manufacturers from Stats SA, Large Sample Survey, 2005 List of manufactures from Stats SA, Business Register List of producers from industry associations
Electricity and gas	List of producers according to Stats SA, Economic Activity Survey
Water	Old sample of PPI List obtained from Department of Water Affairs
Imported products	List of importers obtained from South African Revenue Services
Exported products	List of exporters obtained from South African Revenue Services

ADDITIONAL INFORMATION

EXPLANATORY NOTES

- Introduction** 1 This publication contains results of monthly surveys of prices of locally produced commodities (including exports), imported and exported commodities. The price indices are calculated at base 2000=100.
- Scope of the PPI survey** 2 The indices are compiled on a gross industry basis, i.e. each index relates to those articles, which are produced, imported and exported by the designated industries of the South African economy. Selling prices are collected from manufacturers, importers and exporters.
- Classification** 3 The 1993 edition of the Standard Industrial Classification of all Economic Activities (SIC), Fifth edition, Report No. 09-90-02 was used to classify the industries in the survey. The SIC is based on the 1990 International Standard Industrial Classification of all Economic Activities (ISIC) with suitable adaptations for local conditions. The Central Product Classification (CPC) Version 1.1, Series M No 77 was used to classify the products in the survey.
- 4 This publication presents information, which measures changes in prices of products, which are produced, imported or exported by establishments.
- Statistical unit** 5 The statistical unit is the establishment (branch), which is the smallest economic unit that functions as a separate entity. Each statistical unit is classified to an industry according to the classification of the products that the unit manufactures, imports or exports.
- Survey methodology and design** 6 Different phases of sampling take place. Firstly, a sample of products, based on the information collected through the Large Sample Survey of 2005 and 2005 information on imports and exports received from SARS is designed and drawn. An indicator product is selected purposively within each product group. To be selected, a product should be part of the top 80% of products manufactured, imported or exported in that product group. Furthermore, it must be possible to obtain price quotations for the relevant product during the whole year. The sample of indicator products is revised every five years at which stage the weights of the indicator products/groups are also revised.
- This survey is collected by mail from a sample of approximately 2 325 manufacturers, 2 325 exporters and 2 325 importers. The indices are based on producer prices at the point of Producer in the case of commodities produced in South Africa, and “ex-warehouse”, in the case of imported commodities. Prices “delivered” or “free on rail” are accepted if this is the normal basis of quotation.
- Currently, an average of 13 000 price quotations are collected each month from approximately 2 700 outlets by means of 1 500 distinct questionnaires.
- Pricing basis** 7 Price information refers to the first seven days of the relevant month, except in the case of mining and most of the agricultural products, where it refers to the average price for the month. The average price of imported crude petroleum, used in the compilation of the import component of the PPI, is calculated as the value (in Rands) divided by the quantity of imported crude petroleum for the relevant month. **The prices of all items exclude Value Added Tax (VAT).**

Weighting basis

- 8 The index is a fixed weight index as the weights are determined in the base period and they do not change until the next base period. The commodities directly represented in the index, were selected on the basis of the values of sales of products –
- produced during 2005 for locally produced commodities;
 - exported during 2005; and
 - imported during 2005.

These commodities constitute approximately 80 per cent of the total value of Producer/imports/exports during the relevant year as indicated above. Weights were allocated to each product in accordance with the value of sales for each item during the 2004/05 financial year. The basis on which the weighting structure of each main PPI component, indicated in the tables published in this statistical release, was calculated, is indicated in table C.

Table C– Basis on which the weighting structure of each PPI table is based

Number of table in this statistical release	PPI component	Basis for weighting structure
Table 8	Domestic output of South African industry groups	Sales value of South African Producer (Weighted using the National Accounts value added weights)
Table 9	Exported commodities	Sales value of exported commodities
Table 10	Imported commodities	Sales value of imported commodities
Table 11	Materials used in certain industries	Quantity values of materials used

Processing of price information

- 9 The prices that are quoted for the different products are checked. If the price difference between two successive periods is outside the specified range of increase (+10%) or decreases (-5%), the current price levels are confirmed with relevant respondents.

Calculating product price indices

- 10 Price relatives are calculated for each product per respondent by dividing the current prices by the previously quoted price. The price relative for each product is calculated by means of the geometric mean of the price relatives for each respondent. This price relative for each product is then applied to the product index for the previous month in order to obtain a product index for the relevant month.

Calculating group price indices

- 11 Group price indices are calculated by weighting product indices with the relevant product weight, according to each group’s (local, import, export) weighting structure, using the Laspeyres index formula.

Contributions of specific products to the total PPI

- 12 The monthly (annual) contribution of a specific product or group of products to the total PPI is calculated by multiplying the weight of this product or group of products with the monthly (annual) change in the index for this product or group of products, divided by the index for ‘All groups’, for the previous month (year).

Price indices for diesel	13	<p>The price index for diesel (Coast and Witwatersrand) is based on the refinery prices of diesel.</p> <p>The retail price index for diesel (metropolitan and other urban areas) is based on retail prices obtained from a sample of 84 retail outlets throughout the country. The diesel indices for the different areas are weighted according to the diesel volume distribution as obtained from the South African Petroleum Industry Association (SAPIA).</p> <p>The retail price index for diesel (metropolitan areas) is based on retail prices obtained from a sample of only 48 outlets in the historical metropolitan areas of the CPI. The diesel indices for the different areas are weighted according to the diesel volume distribution in the relevant areas as obtained from the South African Petroleum Industry Association (SAPIA).</p> <p>The price index for diesel at wholesale level (coast and Witwatersrand) is based on the regulated wholesale prices of diesel.</p>										
Reliability of estimates	14	<p>Inaccuracies may occur because of imperfections in reporting by establishment (branch) and errors made in collection and processing of the data. Inaccuracies of this kind are referred to as non-sampling errors. Every effort is made to reduce non-sampling errors to a minimum by careful designing the questionnaires, editing data and efficient operating procedures.</p>										
Related publications	15	<p>Users may also wish to refer to the following publications, which are available from Stats SA -</p> <ul style="list-style-type: none"> • Bulletin of Statistics; and • SA Statistics. 										
Unpublished statistics	16	<p>In some cases, Stats SA can also make available information, which is not published. This information can be made available in one or more of the following ways: computer printout, diskette or CD. Generally a fee is levied for providing unpublished information.</p>										
Symbols and abbreviations	17	<table border="0"> <tr> <td>Stats SA</td> <td>Statistics South Africa</td> </tr> <tr> <td>..</td> <td>not available</td> </tr> <tr> <td>-</td> <td>nil or not applicable</td> </tr> <tr> <td>*</td> <td>revised since previous publication</td> </tr> <tr> <td>avg</td> <td>average</td> </tr> </table>	Stats SA	Statistics South Africa	..	not available	-	nil or not applicable	*	revised since previous publication	avg	average
Stats SA	Statistics South Africa											
..	not available											
-	nil or not applicable											
*	revised since previous publication											
avg	average											

GLOSSARY

Annual percentage change

The annual percentage change is the change in the index of the relevant month of the current year compared with the index of the same month in the previous year expressed as a percentage and is generally accepted as the yardstick of PPI inflation.

Overall average annual percentage change

The overall average annual percentage change is the change in the average index of one year compared with the average index of the previous year expressed as a percentage.

Contribution of specific products to the total PPI

The monthly (annual) contribution of a specific product or group of products to the total PPI is calculated by multiplying the weight of the index with the monthly annual change of the index divided by the index for "All Items".

Establishment

An establishment (branch) is the smallest economic unit that functions as a separate entity.

Indicator products

Indicator products are those products whose sale values represent 80% of the total value of sales (turnover) in an industrial subgroup.

Monthly percentage change

The monthly percentage change is the change in the index of the relevant month compared to the index of the previous month expressed as a percentage.

Weights

The weights show the relative importance of the indicator products in the subgroup. The weight of a product is calculated by dividing the actual value of sales of the relevant indicator product by the total value of sales in that subgroup.

FOR MORE INFORMATION

Stats SA publishes approximately 300 different releases each year. It is not economically viable to produce them in more than one of South Africa's eleven official languages. Since the releases are used extensively, not only locally but also by international economic and social-scientific communities, Stats SA releases are published in English only.

Stats SA has copyright on this publication. Users may apply the information as they wish, provided that they acknowledge Stats SA as the source of the basic data wherever they process, apply, utilise, publish or distribute the data; and also that they specify that the relevant application and analysis (where applicable) result from their own processing of data.

Advance release calendar

An advance release calendar is disseminated on www.statssa.gov.za

Stats SA products

A complete set of Stats SA publications is available at the Stats SA Library and the following libraries -

National Library of South Africa, Pretoria Division
National Library of South Africa, Cape Town Division
Natal Society Library, Pietermaritzburg
Library of Parliament, Cape Town
Bloemfontein Public Library
Johannesburg Public Library
Eastern Cape Library Services, King William's Town
Central Regional Library, Polokwane
Central Reference Library, Nelspruit
Central Reference Collection, Kimberley
Central Reference Library, Mmabatho

Stats SA also provides a subscription service.

Electronic services

A large range of data are available via on-line services, diskette and computer printouts. For more details about our electronic data services, contact (012) 310 8600/8390/8351/4892/8496/8095.

You can visit us on the Internet at: www.statssa.gov.za

Enquiries

Technical enquiries: Marais Kleu
(012) 310 8170

For media enquiries contact:
Mr T Oosterwyk, Manager, at (012) 310-8130 or 082-908-9104

Telephone number: (012) 310 6917/8137/8377 (survey area)
(012) 310 8600/8390/8351/4892/8496/8095 (user information services)
(012) 310 8161 (orders)
(012) 310 8490 (library)

Fax number: (012) 321 3220/6

email: ppi@statssa.gov.za (technical enquiries)
info@statssa.gov.za (user information services)
distribution@statssa.gov.za (orders)

Postal address: Private Bag X 44, Pretoria, 0001

Produced by Stats SA