

# Production Price Index (PPI)

August 2003

Co-operation between Statistics South Africa (Stats SA), the citizens of the country, the private sector and government institutions is essential for a successful statistical system. Without continued co-operation and goodwill, the timely release of relevant and reliable official statistics will not be possible.

Stats SA publishes approximately three hundred different releases each year. It is not economically viable to produce them in more than one of South Africa's eleven official languages. Since the releases are used extensively, not only locally, but also by international economic and social-scientific communities, Stats SA releases are published in English only.

This data in this statistical release adheres to the Special Data Dissemination Standard (SDDS) of the International Monetary Fund (IMF), which sets out standards on coverage, periodicity and timeliness of data; access by the public; integrity; and quality of the disseminated data.

**Embargo: 11:30**  
**Date: 30 September 2003**

**KEY FIGURES AS AT AUGUST 2003****Production Price Index and rates of change according to main components**

Base: 2000 = 100

Production Price Index components	Indices			Percentage change between		
	Aug 2002	July 2003	Aug 2003	Jul 2003 and Aug 2003		Aug 2002 and Aug 2003
				Actual %	Seasonally adjusted %	Actual %
All commodities for consumption in South Africa	126,2	127,1	126,5	-0,5	-0,5	+ 0,2
Locally produced commodities	125,8	129,7	129,1	-0,5	-0,6	+ 2,6
Imported commodities	127,2	119,5	119,0	-0,4	-0,6	- 6,4
Output of South African industry						
Total output	124,7	126,4	126,0	-0,3	-0,6	+ 1,0
For South African consumption	125,8	129,7	129,1	-0,5	-0,6	+ 2,6

**KEY FINDINGS AS AT AUGUST 2003**

Annual percentage change in the PPI is lower at 0,2% at August 2003 (i.e. the PPI at August 2003 compared with that at August 2002)

*The Production Price Index (PPI) for all commodities for South African consumption shows an annual rate of increase of 0,2% at August 2003 (i.e. the PPI at August 2003 compared with that at August 2002). This rate is 1,3 percentage points lower than the corresponding annual rate of 1,5% at July 2003 (i.e. the PPI at July 2003 compared with that at July 2002) (cf. table 1, p.8). This lower annual rate at August 2003 compared with that at July 2003 could be explained by decreases in inflation rates in the production price indices for the following:*

- *Electricity, of which the rate decreased from + 14,4% at July 2003 to + 13,1% at August 2003.*
- *Non-metallic mineral products, of which the rate decreased from + 7,4% at July 2003 to + 5,8% at August 2003.*
- *Transport equipment, of which the rate decreased from + 3,5% at July 2003 to + 1,5% at August 2003.*
- *Food at manufacturing, of which the rate decreased from + 1,6% at July 2003 to - 1,7% at August 2003.*
- *Non-electrical machinery and equipment, of which the rate decreased from 0,0% at July 2003 to - 1,1% at August 2003.*
- *Medical, precision and optical instruments, of which the rate decreased from - 3,8% at July 2003 to - 5,1% at August 2003.*
- *Agricultural products, of which the rate decreased from - 2,6% at July 2003 to - 9,7% at August 2003.*

*However, these lower annual rates of increase were partially counteracted by a higher annual rate of increase reflected at August 2003 (i.e. the specific indices at August 2003 compared with that at August 2002) in the inflation rate of the production price index for:*

- *Mining and quarrying products, of which the rate increased from - 10,4% at July 2003 to - 6,3% at August 2003.*

*From July 2003 to August 2003 this index as well as the seasonally adjusted index decreased by 0,5%.*

The annual increase of 0,2% in the PPI for all commodities for South African consumption is due to an annual increase in the price index for locally produced commodities (+ 1,9 percentage points), which was partially counteracted by an annual decrease in the price index for imported commodities (- 1,7 percentage points). The PPI for locally produced commodities contributed less to the annual increase of 0,2% in the PPI for all commodities for South African consumption at August 2003 (+ 1,9 percentage points) as at July 2003 (+ 3,2 percentage points) and imported commodities contributed the same at August 2003 and July 2003 (- 1,7 of a percentage point) (cf. table 2, p.8).

**Annual percentage change in the PPI for locally produced commodities for consumption in South Africa is lower at 2,6% at August 2003 (i.e. the PPI at August 2003 compared with that at August 2002)**

*The annual rate of increase in the PPI for locally produced commodities for consumption in South Africa is 2,6% at August 2003 (i.e. the PPI at August 2003 compared with that at August 2002), which is 1,8 percentage points lower than the corresponding annual rate of 4,4% at July 2003 (i.e. the PPI at July 2003 compared with that at July 2002) (cf. table 1, p.8). From July 2003 to August 2003 this index decreased by 0,5% and the seasonally adjusted index decreased by 0,6%.*

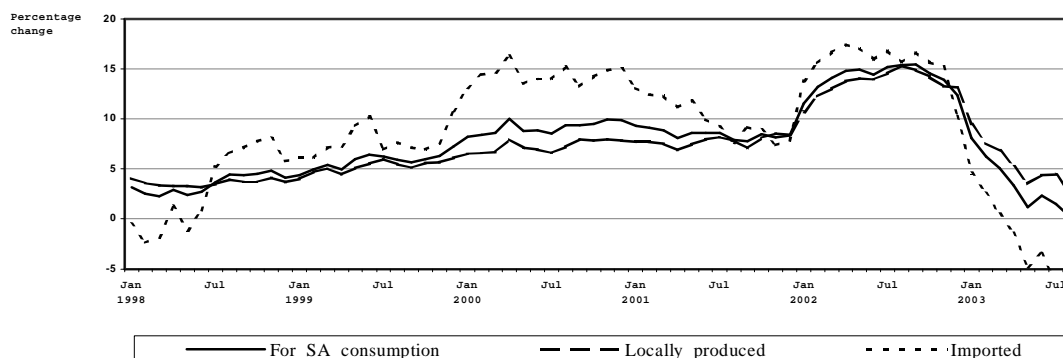
The annual increase of 2,6% in the PPI for locally produced commodities for consumption in South Africa is due to relatively large annual increases in the price indices for electricity (+ 0,7 of a percentage point), transport equipment (+ 0,5 of a percentage point), paper, paper products and printing (+ 0,5 of a percentage point), beverages (+ 0,4 of a percentage point), chemicals and chemical products (+ 0,4 of a percentage point), metal products (+ 0,4 of a percentage point) and tobacco products (+ 0,3 of a percentage point). These annual increases were partially counteracted by annual decreases in the price indices for agricultural products (- 1,0 percentage point), products of petroleum and coal (- 0,3 of a percentage point), electrical machinery and apparatus (- 0,1 of a percentage point) and food at manufacturing (- 0,1 of a percentage point) (cf. table 6, p.10).

**Annual rate of change in the PPI for imported commodities remained unchanged at - 6,4% at August 2003 (i.e. the PPI at August 2003 compared with that at August 2002)**

*The PPI for imported commodities shows an annual rate of decrease of - 6,4% at August 2003 (i.e. the PPI at August 2003 compared with that at August 2002). This rate is the same as the corresponding annual rate of - 6,4% at July 2003 (i.e. the PPI at July 2003 compared with that at July 2002) (cf. table 1, p. 8). From July 2003 to August 2003 this index decreased by 0,4% and the seasonally adjusted index decreased by 0,6%.*

The annual decrease of 6,4% in the PPI for imported commodities is due to relatively large annual decreases in the price indices for mining and quarrying products (- 1,3 percentage points), office, accounting and computing machinery (- 0,8 of a percentage point), transport equipment (- 0,7 of a percentage point), non-electrical machinery and equipment (- 0,6 of a percentage point), chemicals and chemical products (- 0,5 of a percentage point), food at manufacturing (- 0,5 of a percentage point), paper, paper products and printing (- 0,4 of a percentage point), agricultural products (- 0,4 of a percentage point), radio, television, communication equipment and apparatus (- 0,4 of a percentage point) and basic metals (- 0,3 of a percentage point), while an annual increase occurred in the price index for beverages (+ 0,1 of a percentage point) (cf. table 8, p.11).

**Figure 1 – Annual percentage change in the Production Price Index:  
Commodities for South African consumption**



Source: Stats SA

## **Contributions to monthly changes**

### **PPI for all commodities for South African consumption**

The monthly decrease of 0,4% in the PPI for all commodities for South African consumption is due to monthly decreases in the price indices for locally produced commodities (- 0,3 of a percentage point) and for imported commodities (- 0,1 of a percentage point) (cf. table 3, p.8).

### **PPI for locally produced commodities for consumption in South Africa**

The monthly decrease of 0,5% in the PPI for locally produced commodities for consumption in South Africa is due to monthly decreases in the price indices for agricultural products (- 0,4 of a percentage point) and food at manufacturing (- 0,1 of a percentage point) (cf. table 7, p.10).

### **PPI for imported commodities**

The monthly decrease of 0,4% in the PPI for imported commodities is due to monthly decreases in the price indices for food at manufacturing (- 0,1 of a percentage point), chemicals and chemical products (- 0,1 of a percentage point), non-electrical machinery and equipment (- 0,1 of a percentage point), office, accounting and computing machinery (- 0,1 of a percentage point), medical precision and optical instruments (- 0,1 of a percentage point) and transport equipment (- 0,1 of a percentage point), while monthly increases occurred in the price indices for mining and quarrying products (+ 0,1 of a percentage point) and agricultural products (+ 0,1 of a percentage point) (cf. table 9, p.11).

### **Monthly changes in the PPI for all commodities for South African consumption**

Relatively large monthly decreases occurred in the price indices for agricultural products (- 3,6%), office, accounting and computing machinery (- 1,9%), electrical machinery and apparatus (- 1,6%), medical, precision and optical instruments (- 1,1%), electricity (- 0,8%), food at manufacturing (- 0,7%), leather and leather products (- 0,6%), gas, steam and water (- 0,6%), fishing products (- 0,6%) and products of petroleum and coal (- 0,5%), while monthly increases occurred in the price indices for furniture (+ 1,1%), non-metallic mineral products (+ 1,0%), basic metals (+ 1,0%), "other" manufactures (+ 0,9%), metal products (+ 0,6%), forestry (+ 0,3%), mining and quarrying products (+ 0,2%) and radio, television and communication equipment and apparatus (+ 0,2%) (cf. table 10, p.12 and 13).

### **Monthly changes in the PPI for imported commodities**

Monthly decreases occurred in the price indices for food at manufacturing (- 2,1%), office, accounting and computing machinery (- 1,9%), textiles and made-up goods (- 1,5%), medical, precision and optical instruments (- 1,3%), paper, paper products and printing (- 1,2%), wearing apparel (- 1,1%), leather and leather products (- 1,1%) and non-electrical machinery and equipment (- 0,6%). These monthly decreases were partially counteracted by relatively large monthly increases in the price indices for agricultural products (+ 3,2%), mining and quarrying products (+ 0,7%) and basic metals (+ 0,6%) (cf. table 13, p.18 and 19).

### **Monthly changes in the PPI for exported commodities**

From July 2003 to August 2003, the PPI for exported commodities remained unchanged. Relatively large monthly decreases occurred in the price indices for exported "other" manufactures (- 10,6%), products of petroleum and coal (- 3,0%), agricultural products (- 2,6%), transport equipment (- 0,5%) and non-electrical machinery and equipment (- 0,5%), while relatively large monthly increases occurred in the price indices for exported basic metals (+ 1,3%), fishing products (+ 1,0%), food at manufacturing (+ 0,7%), metal products (+ 0,5%) and electrical machinery and apparatus (+ 0,3%) (cf. table 14, p.20 and 21).

### **Retail price index for diesel**

As from January 2002, when the new CPI basket was implemented based on the Survey of Income and Expenditure of Households, conducted in October 2000, diesel was not included in the CPI basket as the weight thereof was too small. However, the retail price index for diesel was still included in the CPI release as it is used by the civil engineering, building and construction industries in their escalation formulas. This index is compiled by weighting the diesel indices for the areas according to the weights of the different areas based on the weight of the specific area in the total CPI.

Information obtained through investigations and discussions with relevant stakeholders, led to the decision to weigh the retail diesel indices of the different areas according to weights based on the volume of diesel distributed in those areas as from July 2003, backdated to January 2003. The volume distribution is obtained from the South African Petroleum Industry Association (SAPIA).

As the retail price index for diesel is not based on CPI weights and does not contribute to the CPI, it is excluded as from the July 2003 CPI release. However, due to the application of this index in escalation formulas, it is now included with the other diesel indices in the PPI release under Table 16 – Price indices for selected materials (cf. Explanatory note 13 on page 27).

CONTENTS	Page	
<b>Notes</b>	.....	5
<b>Tables</b>		
Table 1	Production Price Index (PPI) and the annual percentage change in the PPI on a monthly basis. ....	8
Table 2	Contributions to the annual percentage change in the PPI for all commodities for consumption in South Africa according to their origin .....	8
Table 3	Contributions to the monthly percentage change in the PPI for all commodities for consumption in South Africa according to their origin .....	8
Table 4	Contributions to the annual percentage change in the PPI for all commodities for consumption in South Africa according to group. ....	9
Table 5	Contributions to the monthly percentage change in the PPI for all commodities for consumption in South Africa according to group.....	9
Table 6	Contributions to the annual percentage change in the PPI for locally produced commodities for South African consumption according to group. ....	10
Table 7	Contributions to the monthly percentage change in the PPI for locally produced commodities for South African consumption according to group.....	10
Table 8	Contributions to the annual percentage change in the PPI for imported commodities according to group .....	11
Table 9	Contributions to the monthly percentage change in the PPI for imported commodities according to group .....	11
Table 10	Production Price Index for consumption in South Africa and percentage change according to origin and group .....	12
Table 11	Production Price Index for total output of South African industry groups and percentage change according to destination and group .....	14
Table 12	Production Price Index for output of South African industry groups for South African consumption and percentage change according to group .....	16
Table 13	Production Price Index for imported commodities and percentage change according to group .....	18
Table 14	Production Price Index for exported commodities and percentage change according to group .....	20
Table 15	Production Price Index and percentage change for materials used in certain industries .	22
Table 16	Production Price Index and percentage change for selected materials .....	22
Table 17	Seasonally adjusted Production Price Index .....	24
<b>Additional information</b>		
	Explanatory notes .....	25
	Glossary .....	28
<b>For more information</b>	.....	29

## NOTES

<b>Forthcoming issues</b>	<b>Issue</b>	<b>Expected date of publication</b>
	September 2003	29 October 2003
	October 2003	26 November 2003
	November 2003	18 December 2003
	December 2003	28 January 2004
	January 2004	25 February 2004
	February 2004	31 March 2004
 <b>Purpose of the survey</b>	The Surveys of Prices of Locally Produced commodities (which are locally sold or exported) and Imported Commodities are monthly surveys covering samples of manufacturers, exporters and importers operating in the South African economy. The results of the survey are used to compile the Production Price Index (PPI), an economic indicator, which indicates the changes in production prices of locally produced commodities (which are locally sold or exported) and imported commodities. These statistics are used by the private sector in the analysis of comparative business and industry performance, as well as for contract price adjustments.	
 <b>Rebasing the PPI from 1995=100 to 2000=100</b>	Following international practice, the base year of the Production Price Index (PPI) has been changed from 1995 =100 to 2000 =100 with effect from February 2001. For more information see the statistical release P0142.4 for the historical figures.	
 <b>Special Data Dissemination Standard (SDDS) of the International Monetary Fund (IMF)</b>	<p>South Africa's data dissemination practices are assessed against the IMF's Special Data Dissemination Standard (SDDS). A detailed description of the SDDS can be found on the IMF's Dissemination Standards Bulletin Board on the internet at <a href="http://dsbb.imf.org">http://dsbb.imf.org</a>. This is a "best practice" standard. It covers four sectors of the economy i.e. the real, fiscal, financial and external sectors, as well as population and identifies four dimensions i.e. data, access, integrity and quality, of data dissemination. For each of these dimensions, the SDDS prescribes two to four monitorable elements or good practices that can be observed, or monitored, by users of statistics. However, the IMF's monitoring of the SDDS as authorised by the IMF's Board of Executive Directors is limited to the dimensions of data i.e. coverage, periodicity and timeliness, and access i.e. advanced release calendar. It should also be noted that the SDDS is a disclosure standard, i.e. it focuses on encouraging the authorities to provide information to users, including information that will enable users to assess the data.</p> <p>The four institutions responsible for the compilation and dissemination of the SDDS prescribed data categories are National Treasury, the South African Revenue Services (SARS), the South African Reserve Bank (SARB) and Statistics South Africa (Stats SA).</p> <p>National Treasury is responsible for compiling and disseminating data on the national budget (budgetary central government operations). SARS is responsible for compiling and disseminating of data on international merchandise trade.</p> <p>The SARB is responsible for compiling and disseminating, the analytical accounts of the banking sector, the analytical accounts of the central bank, central government debt, interest rate, exchange rates, share price indices, balance of payments, the international investment position, international reserves and foreign currency liquidity.</p> <p>Stats SA is responsible for compiling and disseminating data on the production index, national accounts, government accounts, industry – based statistics, social statistics, the production price index, consumer price index, labour market and population statistics.</p> <p>South Africa has subscribed to the SDDS since 2 August 1996 and started posting its metadata on 27 September 1996. South Africa met the SDDS specifications for the coverage, periodicity and timeliness of the data, and for the dissemination of advanced release calendars on 18 September 2000. The National Summary Data Page has been hyperlinked since 24 April 1997 and the Data Template on International Reserves and Foreign Currency Liquidity was disseminated on 1 September 2000. South Africa is the only subscriber to the SDDS from the African continent.</p>	

**Reports on  
Observance of  
Standards and  
Codes (ROSC) of  
the International  
Monetary Fund  
(IMF)**

The IMF has been working actively on producing Reports on Observance of Standards and Codes (ROSC) as a step to strengthen the architecture of the international financial system. The objectives of the ROSC include the promotion of increased transparency and encouragement of implementation of internationally accepted standards and codes. One of the ROSC components is the data dissemination module, which falls under the responsibility of the IMF's Statistics Department (STA). In this module, a country is assessed according to the SDDS.

The data dissemination module of the ROSC provides a summary of South Africa's practices on the coverage, periodicity and timeliness of the data categories specified in the IMF's SDDS, and on the practices on the provision of advance release calendars for these categories. It is complemented by an assessment of the quality of the Production Price Index, using the Data Quality Assessment Framework (DQAF) developed by the IMF's Statistics Department.

The DQAF undertakes to assess data quality under the following dimensions -

- Prerequisites of quality;
- Integrity;
- Methodological soundness;
- Accuracy and reliability;
- Serviceability; and
- Accessibility

An IMF delegation visited South Africa from 7 to 18 May 2001 and produced a data ROSC for South Africa. This ROSC indicates to which extent South Africa has observed the IMF's requirements and is available at <http://www.imf.org/external/np/rosc/rosc.asp>.

**Methodological  
notes**

According to international best practice, the PPI is reweighted every five years. Stats SA reweighted the PPI as from June 1999 using a new basket of indicator products and their relevant weights.

The new baskets of indicator products manufactured and sold locally, exported and imported were compiled through various information sources. The information sources used to select the relevant indicator products in the different production industries are indicated in table A.

**Table A – Information sources used to select products in the different production industries**

<b>Main products and industries</b>	<b>Sources</b>
<b>Locally produced and sold items</b>	
Agriculture	Department of Agriculture
Fishing	Fishing Handbook, 1996
Forestry	Commercial Timber Resources and Roundwood Processing in South Africa, 1996
Mining and quarrying	Department of Minerals and Energy Affairs
Manufacturing	Stats SA, Census of Manufacturing, 1996
Electricity, gas and steam	Stats SA, Census of Electricity, Gas and Steam, 1995
Water	Department of Water Affairs and Forestry
<b>Imported items</b>	South African Revenue Services
<b>Exported items</b>	South African Revenue Services

The products were classified according to the relevant Standard Industrial Classification (SIC) subgroups. The products in each subgroup were then sorted according to their value of sales. The products contributing to the top 80% of the sales in each subgroup were selected as indicator products. These are the products for which prices will be monitored periodically by Stats SA.

The questionnaire(s) for each subgroup, which are used to collect the relevant price information from respondents, were adjusted to include the newly selected indicator products. Although the products on each questionnaire differ from the other questionnaires, their layout is identical.

For each indicator product a sample of manufacturers, importers and exporters was drawn from all the manufacturers, importers and exporters who manufacture, import or export the specific indicator product. The list of manufacturers, importers and exporters (sampling frame), from which the samples were drawn, are indicated in table B.

**Table B– Sampling frame**

<b>Main products and industries</b>	<b>Sources</b>
<b>Locally produced and sold products</b>	
Agriculture	List of fresh produce markets
Mining and quarrying	List of mines
Forestry	List obtained from Department of Agriculture Old sample of PPI
Fishing	Old sample of PPI List obtained from other sources
Manufacturing	List of manufacturers from the Census of Manufacturing, 1996 List of manufactures from trade unions
Electricity, gas and steam	List of producers according to the Census Of Electricity, Gas and Steam, 1995
Water	Old sample of PPI.
<b>Imported products</b>	List of importers obtained from South African Revenue Services
<b>Exported items</b>	List of exporters obtained from South African Revenue Services



Table 1 - The Production Price Index (PPI) and the annual percentage change in the PPI on a monthly basis

Base : 2000 = 100

Year		Jan.	Feb.	Mar.	Apr.	May	Jun.	Jul.	Aug.	Sep.	Oct.	Nov.	Dec.	Avg.
<b>Commodities for consumption in South African</b>														
2001	Index	104,8	105,2	105,5	106,6	107,3	108,1	108,7	109,4	109,5	111,1	112,2	112,9	108,4
	%	+9,3	+9,1	+8,9	+8,1	+8,6	+8,6	+8,6	+7,9	+7,8	+8,5	+8,2	+8,3	+8,4
2002	Index	116,9	119,1	120,4	122,4	123,3	123,7	125,2	126,2	126,4	127,3	127,8	126,9	123,8
	%	+11,5	+13,2	+14,1	+14,8	+14,9	+14,4	+15,2	+15,4	+15,4	+14,6	+13,9	+12,4	+14,2
2003	Index	126,4	126,5	126,5	126,5	124,8	126,6	127,1	126,5	..	..	..	..	..
	%	+8,1	+6,2	+5,1	+3,3	+1,2	+2,3	+1,5	+0,2	..	..	..	..	..
<b>Locally produced commodities</b>														
2001	Index	103,8	104,5	104,6	105,8	106,7	107,6	108,4	109,1	108,9	110,4	111,7	111,8	107,8
	%	+7,7	+7,7	+7,5	+6,9	+7,5	+7,9	+8,2	+7,8	+7,1	+8,1	+8,6	+8,4	+7,8
2002	Index	114,9	117,3	118,2	120,4	121,7	122,6	124,2	125,8	125,1	126,1	126,5	126,5	122,4
	%	+10,7	+12,2	+13,0	+13,8	+14,1	+13,9	+14,6	+15,3	+14,9	+14,2	+13,2	+13,1	+13,5
2003	Index	125,8	126,2	126,3	126,7	126,0	128,0	129,7	129,1	..	..	..	..	..
	%	+9,5	+7,6	+6,9	+5,2	+3,5	+4,4	+4,4	+2,6	..	..	..	..	..
<b>Imported commodities</b>														
2001	Index	107,2	106,9	107,9	108,5	108,8	109,1	109,3	110,0	110,9	112,6	113,5	115,6	110,0
	%	+13,1	+12,4	+12,3	+11,2	+11,8	+10,0	+9,2	+7,6	+9,2	+8,9	+7,4	+7,8	+10,0
2002	Index	122,0	123,6	125,9	127,4	127,4	126,5	127,7	127,2	129,4	130,2	130,8	127,5	127,1
	%	+13,8	+15,6	+16,7	+17,4	+17,1	+15,9	+16,8	+15,6	+16,7	+15,6	+15,2	+10,3	+15,5
2003	Index	127,6	126,8	126,5	125,6	121,3	122,2	119,5	119,0	..	..	..	..	..
	%	+4,6	+2,6	+0,5	-1,4	-4,8	-3,4	-6,4	-6,4	..	..	..	..	..

Table 2 - Contributions to the annual percentage change in the PPI for all commodities for consumption in South Africa according to their origin

Origin of contribution	Contribution at July 2003	Contribution at August 2003
Locally produced commodities	+3,2	+1,9
Imported commodities	-1,7	-1,7
<b>All groups</b>	<b>+1,5</b>	<b>+0,2</b>

Table 3 - Contributors to the monthly percentage change in the PPI for all commodities for consumption in South Africa according to their origin

Origin of contribution	Contribution at July 2003	Contribution at August 2003
Locally produced commodities	+1,0	-0,3
Imported commodities	-0,6	-0,1
<b>All groups</b>	<b>+0,4</b>	<b>-0,4</b>

Table 4 - Contributions to the annual percentage change in the PPI for all commodities for consumption in South Africa according to group

Group	Contribution at July 2003	Contribution at August 2003
Agriculture	-0,2	-0,8
Mining and quarrying	-0,6	-0,3
Food at manufacturing	+0,2	-0,2
Beverages	+0,3	+0,3
Tobacco products	+0,2	+0,2
Textiles and made-up goods	+0,1	+0,1
Wearing apparel	+0,1	+0,1
Wood and wood products	+0,1	+0,1
Paper, paper products and printing	+0,3	+0,3
Products of petroleum and coal	-0,2	-0,2
Chemicals and chemical products	+0,1	+0,1
Rubber and plastic products	+0,2	+0,2
Non-metallic mineral products	+0,2	+0,1
Basic metals	-0,1	-0,1
Metal products	+0,3	+0,3
Non-electrical machinery and equipment	0,0	-0,1
Office, accounting and computing machinery	-0,2	-0,2
Radio, TV, communication equipment and apparatus	-0,1	-0,1
Medical, precision and optical instruments	0,0	-0,1
Transport equipment	+0,4	+0,2
Electricity	+0,6	+0,5
All other groups	-0,2	-0,2
<b>All groups</b>	<b>+1,5</b>	<b>+0,2</b>

Table 5 - Contributions to the monthly percentage change in the PPI for all commodities for consumption in South Africa according to group

Group	Contribution at June 2003	Contribution at August 2003
Agriculture	+0,4	-0,3
Mining and quarrying	-0,3	0,0
Food at manufacturing	0,0	-0,1
Paper, paper products and printing	+0,1	0,0
Products of petroleum and coal	+0,1	0,0
Chemicals and chemical products	-0,1	0,0
Non-electrical machinery and equipment	-0,1	0,0
Electrical machinery and apparatus	0,0	-0,1
Transport equipment	-0,1	0,0
Electricity	+0,3	0,0
All other groups	+0,1	0,0
<b>All groups</b>	<b>+0,4</b>	<b>-0,5</b>

Table 6 - Contributors to the annual percentage change in the PPI for locally produced commodities according to group

Group	Contribution at July 2003	Contribution at August 2003
Agriculture	-0,2	-1,0
Mining and quarrying	-0,1	0,0
Food at manufacturing	+0,4	-0,1
Beverages	+0,4	+0,4
Tobacco products	+0,3	+0,3
Textiles and made-up goods	+0,2	+0,2
Wearing apparel	+0,1	+0,1
Wood and wood products	+0,1	+0,1
Paper, paper products and printing	+0,5	+0,5
Products of petroleum and coal	-0,3	-0,3
Chemicals and chemical products	+0,4	+0,4
Rubber and plastic products	+0,2	+0,2
Non-metallic mineral products	+0,3	+0,2
Metal products	+0,4	+0,4
Non-electrical machinery and equipment	+0,2	+0,1
Electrical machinery and apparatus	+0,1	-0,1
Transport equipment	+0,7	+0,5
Furniture	+0,1	0,0
Electricity	+0,8	+0,7
All other groups	-0,2	0,0
<b>All groups</b>	<b>+4,4</b>	<b>+2,6</b>

Table 7 - Contributors to the monthly percentage change in the PPI for locally produced commodities according to group

Group	Contribution at July 2003	Contribution at August 2003
Agriculture	+0,5	-0,4
Food at manufacturing	+0,1	-0,1
Tobacco products	+0,1	0,0
Paper, paper products and printing	+0,1	0,0
Products of petroleum and coal	+0,2	0,0
Chemicals and chemical products	-0,1	0,0
Electricity	+0,4	0,0
<b>All groups</b>	<b>+1,3</b>	<b>-0,5</b>

**Table 8 - Contributors to the annual percentage change in the PPI for imported commodities according to group**

Group	Contribution at July 2003	Contribution at August 2003
Agriculture	-0,3	-0,4
Mining and quarrying	-2,0	-1,3
Food at manufacturing	-0,4	-0,5
Beverages	+0,1	+0,1
Textiles and made-up goods	-0,1	-0,1
Leather and leather products	-0,1	-0,1
Paper, paper products and printing	-0,3	-0,4
Chemicals and chemical products	-0,4	-0,5
Non-metallic mineral products	-0,1	-0,1
Basic metals	-0,5	-0,3
Metal products	-0,1	-0,1
Non-electrical machinery and equipment	-0,4	-0,6
Office, accounting and computing machinery	-0,8	-0,8
Radio, TV, communication equipment and apparatus	-0,4	-0,4
Medical, precision and optical instruments	-0,2	-0,2
Transport equipment	-0,4	-0,7
<b>All groups</b>	<b>-6,4</b>	<b>-6,4</b>

**Table 9 - Contributors to the monthly percentage change in the PPI for imported commodities according to group**

Group	Contribution at June 2003	Contribution at August 2003
Agriculture	0,0	+0,1
Mining and quarrying	-1,1	+0,1
Food at manufacturing	-0,1	-0,1
Chemicals and chemical products	-0,1	-0,1
Non-electrical machinery and equipment	-0,3	-0,1
Office, accounting and computing machinery	-0,1	-0,1
Medical, precision and optical instruments	0,0	-0,1
Transport equipment	-0,4	-0,1
All other groups	-0,1	0,0
<b>All groups</b>	<b>-2,2</b>	<b>-0,4</b>

Table 10 - Production Price Index for consumption in South Africa according to origin and group

Base : 2000 = 100

Origin/Group	Weight	Indices			% change between	
		Aug 2002	Jul 2003	Aug 2003	Jul 2003 and Aug 2003	Aug 2002 and Aug 2003
All groups	100,00	126,2	127,1	126,5	-0,5	+0,2
South African	73,00	125,8	129,7	129,1	-0,5	+2,6
Imported	27,00	127,2	119,5	119,0	-0,4	-6,4
1. Agriculture, Forestry, Fishing and Mining	15,22	131,5	124,0	121,7	-1,9	-7,5
1.1 Agriculture	7,68	143,1	134,0	129,2	-3,6	-9,7
1.1.1 Food	7,34	139,7	122,9	123,4	+0,4	-11,7
Grain	1,51	178,3	121,2	126,5	+4,4	-29,1
Sugar cane	0,38	138,2	141,1	141,8	+0,5	+2,6
Oil seeds	0,18	187,9	163,7	164,4	+0,4	-12,5
Vegetables and dried beans	0,68	150,3	145,8	129,8	-11,0	-13,6
Fruit	0,68	117,6	107,0	114,4	+6,9	-2,7
Meat	2,37	131,6	119,6	119,9	+0,3	-8,9
Milk and eggs	0,96	120,8	126,8	127,6	+0,6	+5,6
Other	0,58	94,6	100,9	101,2	+0,3	+7,0
1.1.2 Other agriculture	0,34	187,0	277,2	203,8	-26,5	+9,0
1.2 Forestry	1,97	100,0	100,0	100,3	+0,3	+0,3
1.3 Fishing	0,12	135,8	136,4	135,6	-0,6	-0,1
1.4 Mining and quarrying	5,45	122,8	114,9	115,1	+0,2	-6,3
Coal	1,59	108,6	118,0	117,6	-0,3	+8,3
Metal ores	0,68	131,6	118,0	117,2	-0,7	-10,9
Other minerals	3,18	125,9	110,6	111,3	+0,6	-11,6
2. Manufacturing	80,28	125,3	126,8	126,6	-0,2	+1,0
South African	56,60	125,0	129,8	129,8	0,0	+3,8
Imported	23,68	126,4	120,2	119,4	-0,7	-5,5
2.1 Food	10,16	138,8	137,5	136,5	-0,7	-1,7
Meat	1,79	146,0	129,6	129,6	0,0	-11,2
Fresh meat	1,43	151,1	130,4	130,9	+0,4	-13,4
Meat products	0,36	122,6	126,2	124,1	-1,7	+1,2
Fish and fish products	0,19	145,8	133,3	131,5	-1,4	-9,8
Fruit and vegetable products	0,47	121,0	131,3	132,2	+0,7	+9,3
Fats and oils	0,84	133,7	129,5	126,6	-2,2	-5,3
Milk products	1,31	131,6	145,0	144,9	-0,1	+10,1
Grain mill products	1,82	153,8	145,2	141,2	-2,8	-8,2
Sugar	0,35	121,8	129,0	129,0	0,0	+5,9
Coffee and tea	0,23	127,0	130,5	131,9	+1,1	+3,9
Other	3,16	134,4	138,8	138,8	0,0	+3,3
2.2 Beverages	3,26	117,4	128,9	128,9	0,0	+9,8
Alcoholic	2,35	119,7	131,2	131,2	0,0	+9,6
Non-alcoholic	0,91	111,3	122,8	122,8	0,0	+10,3
2.3 Tobacco products	1,15	115,4	135,6	135,6	0,0	+17,5
2.4 Textiles and made-up goods	2,39	117,3	121,4	121,0	-0,3	+3,2
Spinning, weaving and finishing of textiles	1,43	116,4	121,0	120,8	-0,2	+3,8
Other textiles	0,96	118,6	121,9	121,3	-0,5	+2,3
2.5 Wearing apparel	1,81	115,6	120,8	120,6	-0,2	+4,3
Knitted and crocheted fabrics and articles	0,42	118,1	125,6	125,2	-0,3	+6,0
Wearing apparel	1,39	114,8	119,2	119,1	-0,1	+3,7
Men's and boys` clothing	0,56	115,6	120,8	120,6	-0,2	+4,3
Women's and girls` clothing	0,78	113,0	116,4	116,4	0,0	+3,0
Other, including articles of fur	0,05	128,6	141,5	141,4	-0,1	+10,0
2.6 Leather and leather products	0,29	131,2	126,0	125,3	-0,6	-4,5
2.7 Footwear	0,69	121,7	122,7	122,7	0,0	+0,8
2.8 Wood and wood products	1,26	122,2	129,5	129,5	0,0	+6,0
Sawmilling and planing of wood	0,44	109,0	116,4	116,3	-0,1	+6,7
Products of wood, cork and plaiting materials	0,82	129,2	136,4	136,5	+0,1	+5,7
2.9 Paper, paper products and printing	8,13	127,8	132,2	132,0	-0,2	+3,3
Paper and paper products	3,21	130,3	136,1	136,0	-0,1	+4,4
Publishing and printing	4,92	126,2	129,7	129,5	-0,2	+2,6
2.10 Products of petroleum and coal	2,75	128,2	117,4	116,8	-0,5	-8,9
2.11 Chemicals and chemical products	8,39	128,0	130,0	129,8	-0,2	+1,4
Basic chemicals	3,54	135,4	132,4	132,6	+0,2	-2,1
Fertilizers	0,45	131,0	127,8	127,5	-0,2	-2,7
Other basic chemicals	3,09	136,5	133,3	133,5	+0,2	-2,2
Compounded chemical products	4,85	122,3	128,0	127,4	-0,5	+4,2
Pharmaceutical products	1,47	116,6	125,2	124,2	-0,8	+6,5
Other compounded chemical products	3,38	124,7	129,1	128,7	-0,3	+3,2

Table 10 - Production Price Index for consumption in South Africa according to origin and group (concluded)

Base : 2000 = 100

Origin/Group	Weight	Indices			% -change between	
		Aug 2002	Jul 2003	Aug 2003	Jul 2003 and Aug 2003	Aug 2002 and Aug 2003
2.12 Rubber and plastic products	2,71	118,0	124,8	124,8	0,0	+5,8
Rubber products	0,85	123,5	133,6	133,5	-0,1	+8,1
Plastic products	1,86	115,5	120,7	120,7	0,0	+4,5
2.13 Non-metallic mineral products	2,25	127,7	133,8	135,1	+1,0	+5,8
Glass and glass products	0,61	122,7	125,8	129,1	+2,6	+5,2
Other	1,64	129,1	136,4	137,0	+0,4	+6,1
2.14 Basic metals	3,97	122,7	119,5	120,7	+1,0	-1,6
Ferrous	1,82	122,2	133,0	135,6	+2,0	+11,0
Non-ferrous	2,15	123,1	108,2	108,2	0,0	-12,1
2.15 Metal products	3,18	119,2	128,3	129,1	+0,6	+8,3
Structural metal products	1,00	115,8	134,2	135,1	+0,7	+16,7
Other	2,18	120,9	125,7	126,6	+0,7	+4,7
2.16 Non-electrical machinery and equipment	6,72	122,2	121,3	120,9	-0,3	-1,1
General purpose machinery	2,44	127,3	126,3	126,0	-0,2	-1,0
Special purpose machinery	3,69	120,8	119,8	119,4	-0,3	-1,2
Household appliances	0,59	124,7	124,9	124,3	-0,5	-0,3
2.17 Office, accounting and computing machinery	1,41	113,0	96,6	94,8	-1,9	-16,1
2.18 Electrical machinery and apparatus	2,48	122,8	122,4	120,4	-1,6	-2,0
Electric motors, generators and transformers	0,34	114,9	116,2	114,1	-1,8	-0,7
Electricity distribution and control apparatus	0,75	123,2	123,5	123,8	+0,2	+0,5
Insulated wire and cable	0,69	125,4	121,3	115,3	-4,9	-8,1
Other	0,70	122,9	124,3	123,9	-0,3	+0,8
2.19 Radio, television and communication equipment and apparatus	2,70	122,1	117,6	117,8	+0,2	-3,5
2.20 Medical, precision and optical instruments	1,18	124,6	119,6	118,3	-1,1	-5,1
Medical appliances and instruments for measuring, checking, testing and navigating	0,99	124,0	118,0	116,9	-0,9	-5,7
Other, including watches and clocks	0,19	126,9	127,2	124,8	-1,9	-1,7
2.21 Transport equipment	11,04	124,2	126,3	126,1	-0,2	+1,5
Motor vehicles, parts and accessories	10,50	124,5	127,3	127,0	-0,2	+2,0
Motor vehicles	5,43	119,2	124,4	124,5	+0,1	+4,4
Bodies, trailers and semi-trailers	0,16	118,0	120,1	121,3	+1,0	+2,8
Parts and accessories	4,91	130,1	130,0	129,3	-0,5	-0,6
Other transport equipment	0,54	117,3	108,7	108,6	-0,1	-7,4
2.22 Furniture	1,01	116,9	119,0	120,3	+1,1	+2,9
2.23 Other manufactures	1,35	116,9	116,8	117,8	+0,9	+0,8
3. Electricity, Gas Steam and Water	4,50	122,6	138,7	137,7	-0,7	+12,3
3.1 Electricity	4,17	122,0	139,1	138,0	-0,8	+13,1
3.2 Gas, Steam and water	0,33	130,7	133,7	132,9	-0,6	+1,7

Table 11 - Production Price Index for total output of South African industry groups according to destination and group

Base : 2000 = 100

Origin/Group	Weight	Indices			% change between	
		Aug 2002	Jul 2003	Aug 2003	Jul 2003 and Aug 2003	Aug 2002 and Aug 2003
All groups	100,00	124,7	126,4	126,0	-0,3	+1,0
South African	75,88	125,8	129,7	129,1	-0,5	+2,6
Exported	24,12	121,6	116,3	116,3	0,0	-4,4
1. Agriculture, Forestry, Fishing and Mining	19,69	127,9	121,1	118,9	-1,8	-7,0
1.1 Agriculture	8,55	141,2	131,3	126,1	-4,0	-10,7
1.1.1 Food	8,35	137,3	119,9	119,7	-0,2	-12,8
Grain	1,70	183,7	125,6	127,9	+1,8	-30,4
Sugar cane	0,40	138,2	141,1	141,8	+0,5	+2,6
Oil seeds	0,18	187,9	163,7	164,4	+0,4	-12,5
Vegetables and dried beans	0,81	142,4	138,5	124,7	-10,0	-12,4
Fruit	1,20	99,6	87,2	91,1	+4,5	-8,5
Meat	2,48	131,3	119,2	119,4	+0,2	-9,1
Milk and eggs	1,00	120,9	127,0	127,8	+0,6	+5,7
Other	0,58	93,3	101,3	101,3	0,0	+8,6
1.1.2 Other agriculture	0,20	204,5	319,4	231,9	-27,4	+13,4
1.2 Forestry	2,06	100,0	100,0	100,3	+0,3	+0,3
1.3 Fishing	0,16	139,0	135,5	135,2	-0,2	-2,7
1.4 Mining and quarrying	8,92	121,1	115,6	115,6	0,0	-4,5
Coal	3,22	126,3	120,3	119,5	-0,7	-5,4
Metal ores	3,64	118,7	115,3	116,4	+1,0	-1,9
Other minerals	2,06	116,9	108,6	108,0	-0,6	-7,6
2. Manufacturing	75,63	124,0	127,0	127,1	+0,1	+2,5
South African	58,83	125,0	129,8	129,8	0,0	+3,8
Exported	16,80	120,8	117,9	118,1	+0,2	-2,2
2.1 Food	10,77	138,2	137,5	136,9	-0,4	-0,9
Meat	1,83	146,1	129,8	130,0	+0,2	-11,0
Fresh meat	1,34	151,9	130,3	130,9	+0,5	-13,8
Meat products	0,49	123,6	129,1	127,0	-1,6	+2,8
Fish and fish products	0,24	133,8	129,3	127,7	-1,2	-4,6
Fruit and vegetable products	0,77	118,6	123,1	124,6	+1,2	+5,1
Fats and oils	0,61	138,6	137,2	136,5	-0,5	-1,5
Milk products	1,35	131,6	145,1	145,1	0,0	+10,3
Grain mill products	1,80	153,1	147,4	143,3	-2,8	-6,4
Sugar	0,70	144,4	133,8	134,6	+0,6	-6,8
Coffee and tea	0,24	127,2	131,1	132,5	+1,1	+4,2
Other	3,23	134,5	139,3	139,3	0,0	+3,6
2.2 Beverages	3,58	117,2	127,2	127,2	0,0	+8,5
Alcoholic	2,61	119,4	129,0	129,0	0,0	+8,0
Non-alcoholic	0,97	111,0	122,2	122,2	0,0	+10,1
2.3 Tobacco products	1,22	115,2	135,0	135,0	0,0	+17,2
2.4 Textiles and made-up goods	2,26	120,9	127,9	127,9	0,0	+5,8
Spinning, weaving and finishing of textiles	1,37	124,8	132,8	132,8	0,0	+6,4
Other textiles	0,89	115,1	120,6	120,6	0,0	+4,8
2.5 Wearing apparel	1,83	115,5	120,5	120,5	0,0	+4,3
Knitted and crocheted fabrics and articles	0,38	119,1	128,3	128,3	0,0	+7,7
Wearing apparel	1,45	114,6	118,5	118,5	0,0	+3,4
Men's and boys' clothing	0,60	117,5	121,8	121,8	0,0	+3,7
Women's and girls' clothing	0,80	111,6	115,0	115,0	0,0	+3,0
Other, including articles of fur	0,05	123,3	134,0	134,0	0,0	+8,7
2.6 Leather and leather products	0,33	122,6	118,5	118,5	0,0	-3,3
2.7 Footwear	0,55	121,3	123,4	123,4	0,0	+1,7
2.8 Wood and wood products	1,20	127,2	135,4	135,4	0,0	+6,4
Sawmilling and planing of wood	0,36	128,6	136,6	136,6	0,0	+6,2
Products of wood, cork and plaiting materials	0,84	126,5	134,8	134,8	0,0	+6,6
2.9 Paper, paper products and printing	8,36	125,4	129,8	129,8	0,0	+3,5
Paper and paper products	3,60	124,6	129,0	129,0	0,0	+3,5
Publishing and printing	4,76	126,0	130,5	130,5	0,0	+3,6
2.10 Products of petroleum and coal	3,27	134,5	117,6	116,3	-1,1	-13,5
2.11 Chemicals and chemical products	7,41	123,5	127,2	127,2	0,0	+3,0
Basic chemicals	3,53	123,7	125,2	125,2	0,0	+1,2
Fertilizers	0,59	123,4	119,1	119,1	0,0	-3,5
Other basic chemicals	2,94	123,9	126,5	126,5	0,0	+2,1
Compounded chemical products	3,88	123,1	128,8	128,8	0,0	+4,6
Pharmaceutical products	0,88	119,0	127,2	127,2	0,0	+6,9
Other compounded chemical products	3,00	124,3	129,2	129,2	0,0	+3,9

Table 11 - Production Price Index for total output of South African industry groups according to destination and group (concluded)

Base : 2000 = 100

Origin/Group	Weight	Indices			% -change between	
		Aug 2002	Jul 2003	Aug 2003	Jul 2003 and Aug 2003	Aug 2002 and Aug 2003
2.12 Rubber and plastic products	2,48	119,8	128,7	128,7	0,0	+7,4
Rubber products	0,75	130,8	145,1	145,2	+0,1	+11,0
Plastic products	1,73	114,9	121,4	121,4	0,0	+5,7
2.13 Non-metallic mineral products	2,11	125,8	134,5	136,0	+1,1	+8,1
Glass and glass products	0,56	121,9	126,6	130,5	+3,1	+7,1
Other	1,55	126,9	136,9	137,6	+0,5	+8,4
2.14 Basic metals	8,68	122,9	121,5	122,9	+1,2	0,0
Ferrous	4,04	126,5	133,4	136,1	+2,0	+7,6
Non-ferrous	4,64	120,0	111,3	111,7	+0,4	-6,9
2.15 Metal products	3,23	116,8	127,4	128,4	+0,8	+9,9
Structural metal products	1,24	117,7	133,8	134,7	+0,7	+14,4
Other	1,99	116,3	123,4	124,4	+0,8	+7,0
2.16 Non-electrical machinery and equipment	3,57	117,8	122,9	122,9	0,0	+4,3
General purpose machinery	1,26	115,6	116,1	116,1	0,0	+0,4
Special purpose machinery	1,96	116,7	125,0	125,1	+0,1	+7,2
Household appliances	0,35	118,3	121,5	121,8	+0,2	+3,0
2.17 Office, accounting and computing machinery	0,14	101,2	100,6	100,6	0,0	-0,6
2.18 Electrical machinery and apparatus	1,90	124,7	124,2	121,7	-2,0	-2,4
Electric motors, generators and transformers	0,19	130,7	134,1	129,8	-3,2	-0,7
Electricity distribution and control apparatus	0,45	128,1	128,3	128,8	+0,4	+0,5
Insulated wire and cable	0,69	123,5	119,0	113,1	-5,0	-8,4
Other	0,57	121,4	123,8	123,8	0,0	+2,0
2.19 Radio, television and communication equipment and apparatus	1,34	130,7	132,9	133,2	+0,2	+1,9
2.20 Medical, precision and optical instruments	0,32	121,6	124,9	124,9	0,0	+2,7
Medical appliances and instruments for measuring, checking, testing and navigating	0,28	122,2	125,9	125,9	0,0	+3,0
Other, including watches and clocks	0,04	117,9	118,4	118,4	0,0	+0,4
2.21 Transport equipment	8,32	117,7	123,5	123,4	-0,1	+4,8
Motor vehicles, parts and accessories	8,07	118,2	124,2	124,1	-0,1	+5,0
Motor vehicles	5,31	119,8	125,6	125,6	0,0	+4,8
Bodies, trailers and semi-trailers	0,33	107,6	108,7	109,3	+0,6	+1,6
Parts and accessories	2,43	116,1	123,1	122,6	-0,4	+5,6
Other transport equipment	0,25	103,6	103,3	103,5	+0,2	-0,1
2.22 Furniture	1,39	112,8	114,2	115,3	+1,0	+2,2
2.23 Other manufactures	1,37	112,8	113,6	112,0	-1,4	-0,7
3. Electricity, Gas Steam and Water	4,68	122,6	138,7	137,7	-0,7	+12,3
3.1 Electricity	4,35	122,0	139,1	138,0	-0,8	+13,1
3.2 Gas, Steam and water	0,33	130,7	133,7	132,9	-0,6	+1,7



Table 12 - Production Price Index for output of South African industry groups for South African consumption according to group

Base : 2000 = 100

Origin/Group	Weight	Indices			% change between	
		Aug 2002	Jul 2003	Aug 2003	Jul 2003 and Aug 2003	Aug 2002 and Aug 2003
All groups	100,00	125,8	129,7	129,1	-0,5	+2,6
South African	100,00	125,8	129,7	129,1	-0,5	+2,6
Exported	-	-	-	-	-	-
1. Agriculture, Forestry, Fishing and Mining	16,29	130,5	126,1	122,8	-2,6	-5,9
1.1 Agriculture	9,67	144,1	136,2	130,7	-4,0	-9,3
1.1.1 Food	9,44	140,1	123,8	124,1	+0,2	-11,4
Grain	1,59	189,3	123,9	129,0	+4,1	-31,9
Sugar cane	0,52	138,2	141,1	141,8	+0,5	+2,6
Oil seeds	0,24	187,9	163,7	164,4	+0,4	-12,5
Vegetables and dried beans	0,93	150,3	145,8	129,8	-11,0	-13,6
Fruit	0,91	116,9	106,5	114,1	+7,1	-2,4
Meat	3,23	131,8	119,7	120,0	+0,3	-9,0
Milk and eggs	1,32	120,8	126,8	127,6	+0,6	+5,6
Other	0,70	93,3	101,3	101,3	0,0	+8,6
1.1.2 Other agriculture	0,23	212,4	348,5	244,0	-30,0	+14,9
1.2 Forestry	2,67	100,0	100,0	100,3	+0,3	+0,3
1.3 Fishing	0,16	136,3	137,1	136,2	-0,7	-0,1
1.4 Mining and quarrying	3,79	116,3	117,6	117,2	-0,3	+0,8
Coal	2,09	109,0	118,8	118,4	-0,3	+8,6
Metal ores	0,88	133,1	118,8	118,0	-0,7	-11,3
Other minerals	0,82	117,4	113,8	114,2	+0,4	-2,7
2. Manufacturing	77,54	125,0	129,8	129,8	0,0	+3,8
South African	77,54	125,0	129,8	129,8	0,0	+3,8
Exported	-	-	-	-	-	-
2.1 Food	12,44	140,1	140,1	139,4	-0,5	-0,5
Meat	2,20	148,9	131,2	131,4	+0,2	-11,8
Fresh meat	1,85	153,6	131,2	131,9	+0,5	-14,1
Meat products	0,35	123,1	130,5	127,9	-2,0	+3,9
Fish and fish products	0,10	169,8	180,0	175,2	-2,7	+3,2
Fruit and vegetable products	0,57	120,7	131,8	133,0	+0,9	+10,2
Fats and oils	0,72	139,6	138,0	137,2	-0,6	-1,7
Milk products	1,72	132,2	146,2	146,1	-0,1	+10,5
Grain mill products	2,25	153,9	148,2	144,0	-2,8	-6,4
Sugar	0,48	121,7	128,9	128,9	0,0	+5,9
Coffee and tea	0,31	127,3	131,0	132,5	+1,1	+4,1
Other	4,09	135,1	139,9	139,9	0,0	+3,6
2.2 Beverages	4,21	117,2	128,6	128,6	0,0	+9,7
Alcoholic	2,98	119,6	131,0	131,0	0,0	+9,5
Non-alcoholic	1,23	111,3	122,9	122,9	0,0	+10,4
2.3 Tobacco products	1,55	115,3	135,6	135,6	0,0	+17,6
2.4 Textiles and made-up goods	2,52	116,8	123,9	123,9	0,0	+6,1
Spinning, weaving and finishing of textiles	1,49	117,5	125,2	125,2	0,0	+6,6
Other textiles	1,03	115,7	121,7	121,7	0,0	+5,2
2.5 Wearing apparel	2,19	115,4	121,3	121,3	0,0	+5,1
Knitted and crocheted fabrics and articles	0,46	119,6	129,5	129,5	0,0	+8,3
Wearing apparel	1,73	114,6	119,4	119,4	0,0	+4,2
Men's and boys' clothing	0,67	116,7	122,6	122,6	0,0	+5,1
Women's and girls' clothing	1,00	112,2	115,8	115,8	0,0	+3,2
Other, including articles of fur	0,06	126,5	138,8	138,8	0,0	+9,7
2.6 Leather and leather products	0,21	123,3	124,9	124,9	0,0	+1,3
2.7 Footwear	0,68	120,9	123,2	123,2	0,0	+1,9
2.8 Wood and wood products	1,46	122,5	131,4	131,4	0,0	+7,3
Sawmilling and planing of wood	0,46	111,7	122,6	122,6	0,0	+9,8
Products of wood, cork and plaiting materials	1,00	127,6	135,6	135,6	0,0	+6,3
2.9 Paper, paper products and printing	9,82	127,2	133,6	133,6	0,0	+5,0
Paper and paper products	3,70	128,2	137,9	137,9	0,0	+7,6
Publishing and printing	6,12	126,6	131,0	131,0	0,0	+3,5
2.10 Products of petroleum and coal	3,29	131,3	118,9	118,1	-0,7	-10,1
2.11 Chemicals and chemical products	6,76	123,8	130,4	130,4	0,0	+5,3
Basic chemicals	2,52	124,2	128,3	128,3	0,0	+3,3
Fertilizers	0,49	127,8	122,8	122,8	0,0	-3,9
Other basic chemicals	2,03	123,1	129,7	129,7	0,0	+5,4
Compounded chemical products	4,24	123,3	131,5	131,5	0,0	+6,7
Pharmaceutical products	1,05	118,5	127,8	127,8	0,0	+7,8
Other compounded chemical products	3,19	124,9	132,6	132,6	0,0	+6,2

Table 12 - Production Price Index for output of South African industry groups for South African consumption according to group (concluded)

Base : 2000 = 100

Origin/Group	Weight	Indices			% -change between	
		Aug 2002	Jul 2003	Aug 2003	Jul 2003 and Aug 2003	Aug 2002 and Aug 2003
2.12 Rubber and plastic products	2,95	119,3	128,6	128,6	0,0	+7,8
Rubber products	0,83	128,3	144,7	144,7	0,0	+12,8
Plastic products	2,12	115,9	122,4	122,4	0,0	+5,6
2.13 Non-metallic mineral products	2,50	127,3	136,3	138,0	+1,2	+8,4
Glass and glass products	0,66	122,6	127,8	132,1	+3,4	+7,7
Other	1,84	128,7	139,0	139,9	+0,6	+8,7
2.14 Basic metals	4,20	123,8	123,6	125,0	+1,1	+1,0
Ferrous	1,90	122,6	140,0	143,5	+2,5	+17,0
Non-ferrous	2,30	125,0	110,5	110,1	-0,4	-11,9
2.15 Metal products	3,58	115,7	127,8	128,9	+0,9	+11,4
Structural metal products	1,31	116,4	135,8	136,8	+0,7	+17,5
Other	2,27	115,1	123,0	124,1	+0,9	+7,8
2.16 Non-electrical machinery and equipment	2,94	116,1	120,8	121,3	+0,4	+4,5
General purpose machinery	0,94	115,8	116,8	117,5	+0,6	+1,5
Special purpose machinery	1,60	115,5	123,2	123,4	+0,2	+6,8
Household appliances	0,40	119,9	121,9	122,3	+0,3	+2,0
2.17 Office, accounting and computing machinery	0,02	114,2	107,9	107,9	0,0	-5,5
2.18 Electrical machinery and apparatus	2,15	126,4	125,7	122,9	-2,2	-2,8
Electric motors, generators and transformers	0,20	132,1	135,6	130,6	-3,7	-1,1
Electricity distribution and control apparatus	0,52	130,1	129,8	130,4	+0,5	+0,2
Insulated wire and cable	0,86	123,3	118,9	112,6	-5,3	-8,7
Other	0,57	125,0	128,3	128,2	-0,1	+2,6
2.19 Radio, television and communication equipment and apparatus	1,58	133,6	135,9	136,2	+0,2	+1,9
2.20 Medical, precision and optical instruments	0,25	116,2	118,4	118,4	0,0	+1,9
Medical appliances and instruments for measuring, checking, testing and navigating	0,22	115,1	117,2	117,2	0,0	+1,8
Other, including watches and clocks	0,03	125,3	127,8	127,8	0,0	+2,0
2.21 Transport equipment	9,60	118,8	125,4	125,3	-0,1	+5,5
Motor vehicles, parts and accessories	9,55	118,7	125,4	125,3	-0,1	+5,6
Motor vehicles	6,62	120,9	127,1	127,1	0,0	+5,1
Bodies, trailers and semi-trailers	0,17	118,3	121,2	122,8	+1,3	+3,8
Parts and accessories	2,76	113,5	121,5	121,0	-0,4	+6,6
Other transport equipment	0,05	105,0	105,0	106,1	+1,0	+1,0
2.22 Furniture	1,27	118,4	120,7	122,1	+1,2	+3,1
2.23 Other manufactures	1,37	115,5	116,2	117,6	+1,2	+1,8
3. Electricity, Gas Steam and Water	6,17	122,5	138,5	137,5	-0,7	+12,2
3.1 Electricity	5,72	122,0	139,1	138,0	-0,8	+13,1
3.2 Gas, Steam and water	0,45	130,7	133,7	132,9	-0,6	+1,7

Table 13 - Production Price Index for imported commodities according to group

Base : 2000 = 100

Origin/Group	Weight	Indices			% change between	
		Aug 2002	Jul 2003	Aug 2003	Jul 2003 and Aug 2003	Aug 2002 and Aug 2003
All groups	100,00	127,2	119,5	119,0	-0,4	-6,4
1. Agriculture, Forestry, Fishing and Mining	12,27	127,5	109,3	110,6	+1,2	-13,3
1.1 Agriculture	2,27	132,1	109,8	113,3	+3,2	-14,2
1.1.1 Food	1,66	134,5	110,6	115,3	+4,2	-14,3
Grain	1,30	141,8	112,3	118,0	+5,1	-16,8
Sugar cane	-	-	-	-	-	-
Oil seeds	-	-	-	-	-	-
Vegetables and dried beans	-	-	-	-	-	-
Fruit	0,06	134,6	117,5	117,6	+0,1	-12,6
Meat	0,05	104,2	104,2	104,2	0,0	0,0
Milk and eggs	-	-	-	-	-	-
Other	0,25	100,6	100,1	101,3	+1,2	+0,7
1.1.2 Other agriculture	0,61	126,2	107,9	108,3	+0,4	-14,2
1.2 Forestry	0,05	100,0	100,0	100,0	0,0	0,0
1.3 Fishing	0,01	107,4	101,6	101,6	0,0	-5,4
1.4 Mining and quarrying	9,94	126,2	108,9	109,7	+0,7	-13,1
Coal	0,26	100,3	100,5	100,5	0,0	+0,2
Metal ores	0,12	99,0	98,2	98,2	0,0	-0,8
Other minerals	9,56	126,8	108,9	109,7	+0,7	-13,5
2. Manufacturing	87,73	126,4	120,2	119,4	-0,7	-5,5
2.1 Food	3,96	129,6	116,8	114,4	-2,1	-11,7
Meat	0,67	124,2	118,4	117,0	-1,2	-5,8
Fresh meat	0,46	124,9	122,6	120,6	-1,6	-3,4
Meat products	0,21	123,0	109,4	109,4	0,0	-11,1
Fish and fish products	0,44	130,6	104,4	104,4	0,0	-20,1
Fruit and vegetable products	0,18	122,9	125,4	123,6	-1,4	+0,6
Fats and oils	1,16	125,0	116,4	109,9	-5,6	-12,1
Milk products	0,21	119,5	119,2	119,0	-0,2	-0,4
Grain mill products	0,65	150,1	114,4	112,5	-1,7	-25,0
Sugar	0,01	148,5	148,5	148,5	0,0	0,0
Coffee and tea	0,03	116,4	115,2	114,0	-1,0	-2,1
Other	0,61	122,4	119,8	120,5	+0,6	-1,6
2.2 Beverages	0,66	119,5	131,9	131,8	-0,1	+10,3
Alcoholic	0,64	120,1	133,0	132,9	-0,1	+10,7
Non-alcoholic	0,02	103,3	103,0	103,0	0,0	-0,3
2.3 Tobacco products	0,04	116,8	116,8	116,8	0,0	0,0
2.4 Textiles and made-up goods	2,03	119,2	113,6	111,9	-1,5	-6,1
Spinning, weaving and finishing of textiles	1,28	113,1	108,1	107,2	-0,8	-5,2
Other textiles	0,75	129,4	122,8	119,8	-2,4	-7,4
2.5 Wearing apparel	0,78	116,0	115,6	114,3	-1,1	-1,5
Knitted and crocheted fabrics and articles	0,30	113,1	110,4	108,4	-1,8	-4,2
Wearing apparel	0,48	118,0	119,0	118,2	-0,7	+0,2
Men`s and boys` clothing	0,24	107,1	106,7	105,2	-1,4	-1,8
Women`s and girls` clothing	0,20	127,3	127,1	127,0	-0,1	-0,2
Other, including articles of fur	0,04	134,4	149,6	148,9	-0,5	+10,8
2.6 Leather and leather products	0,51	140,1	127,3	125,9	-1,1	-10,1
2.7 Footwear	0,73	123,2	121,0	121,0	0,0	-1,8
2.8 Wood and wood products	0,71	120,7	119,0	119,1	+0,1	-1,3
Sawmilling and planing of wood	0,38	100,0	96,0	95,6	-0,4	-4,4
Products of wood, cork and plaiting materials	0,33	142,9	143,7	144,5	+0,6	+1,1
2.9 Paper, paper products and printing	3,57	132,4	121,2	119,8	-1,2	-9,5
Paper and paper products	1,88	142,1	125,6	125,0	-0,5	-12,0
Publishing and printing	1,69	122,9	117,0	114,8	-1,9	-6,6
2.10 Products of petroleum and coal	1,32	101,5	102,6	102,6	0,0	+1,1
2.11 Chemicals and chemical products	12,81	133,9	129,4	128,7	-0,5	-3,9
Basic chemicals	6,30	147,7	137,1	137,5	+0,3	-6,9
Fertilizers	0,32	145,1	149,6	147,9	-1,1	+1,9
Other basic chemicals	5,98	147,8	136,3	136,8	+0,4	-7,4
Compounded chemical products	6,51	120,3	121,7	120,1	-1,3	-0,2
Pharmaceutical products	2,60	114,7	122,5	120,4	-1,7	+5,0
Other compounded chemical products	3,91	124,2	121,3	120,0	-1,1	-3,4

Table 13 - Production Price Index for imported commodities according to group (concluded)

Base : 2000 = 100

Origin/Group	Weight	Indices			% - change between	
		Aug 2002	Jul 2003	Aug 2003	Jul 2003 and Aug 2003	Aug 2002 and Aug 2003
2.12 Rubber and plastic products	2,07	113,2	110,1	110,2	+0,1	-2,7
Rubber products	0,92	112,2	106,9	106,7	-0,2	-4,9
Plastic products	1,15	113,8	112,6	112,9	+0,3	-0,8
2.13 Non-metallic mineral products	1,57	128,3	122,3	121,7	-0,5	-5,1
Glass and glass products	0,47	122,9	117,9	117,1	-0,7	-4,7
Other	1,10	130,7	124,3	123,8	-0,4	-5,3
2.14 Basic metals	3,35	118,3	105,0	105,6	+0,6	-10,7
Ferrous	1,60	120,8	110,4	110,0	-0,4	-8,9
Non-ferrous	1,75	115,7	99,6	101,2	+1,6	-12,5
2.15 Metal products	2,09	135,3	130,5	130,3	-0,2	-3,7
Structural metal products	0,18	104,0	102,8	102,4	-0,4	-1,5
Other	1,91	138,2	133,0	132,9	-0,1	-3,8
2.16 Non-electrical machinery and equipment	17,02	127,1	123,5	122,8	-0,6	-3,4
General purpose machinery	6,50	132,0	130,2	129,5	-0,5	-1,9
Special purpose machinery	9,36	123,3	118,2	117,6	-0,5	-4,6
Household appliances	1,16	129,0	127,8	126,1	-1,3	-2,2
2.17 Office, accounting and computing machinery	5,18	113,0	96,5	94,7	-1,9	-16,2
2.18 Electrical machinery and apparatus	3,41	116,1	116,0	115,7	-0,3	-0,3
Electric motors, generators and transformers	0,73	101,7	101,4	101,4	0,0	-0,3
Electricity distribution and control apparatus	1,23	115,4	116,5	116,5	0,0	+1,0
Insulated wire and cable	0,22	149,0	148,6	146,0	-1,7	-2,0
Other	1,23	119,6	118,5	117,9	-0,5	-1,4
2.19 Radio, television and communication equipment and apparatus	5,73	113,8	104,2	104,2	0,0	-8,4
2.20 Medical, precision and optical instruments	3,67	126,1	119,7	118,1	-1,3	-6,3
Medical appliances and instruments for measuring, checking, testing and navigating	3,05	125,8	118,2	116,8	-1,2	-7,2
Other, including watches and clocks	0,62	127,1	127,0	124,5	-2,0	-2,0
2.21 Transport equipment	14,93	132,2	126,6	126,0	-0,5	-4,7
Motor vehicles, parts and accessories	13,08	133,8	128,7	128,0	-0,5	-4,3
Motor vehicles	2,22	106,1	103,8	104,4	+0,6	-1,6
Bodies, trailers and semi-trailers	0,15	117,0	117,0	117,0	0,0	0,0
Parts and accessories	10,71	138,9	133,2	132,3	-0,7	-4,8
Other transport equipment	1,85	118,3	109,1	108,9	-0,2	-7,9
2.22 Furniture	0,31	100,7	100,4	100,4	0,0	-0,3
2.23 Other manufactures	1,28	120,7	118,3	118,0	-0,3	-2,2
3. Electricity, Gas Steam and Water	-	-	-	-	-	-
3.1 Electricity	-	-	-	-	-	-
3.2 Gas, Steam and water	-	-	-	-	-	-

Table 14 - Production Price Index for exported commodities according to group

Base : 2000 = 100

Origin/Group	Weight	Indices			% change between	
		Aug 2002	Jul 2003	Aug 2003	Jul 2003 and Aug 2003	Aug 2002 and Aug 2003
All groups	100,00	121,6	116,3	116,3	0,0	-4,4
1. Agriculture, Forestry, Fishing and Mining	30,30	123,5	112,5	112,2	-0,3	-9,1
1.1 Agriculture	5,00	121,2	98,7	96,1	-2,6	-20,7
1.1.1 Food	4,89	118,0	93,5	90,7	-3,0	-23,1
Grain	2,03	169,4	129,5	124,7	-3,7	-26,4
Sugar cane	-	-	-	-	-	-
Oil seeds	-	-	-	-	-	-
Vegetables and dried beans	0,44	100,0	100,0	100,0	0,0	0,0
Fruit	2,08	68,1	54,1	52,7	-2,6	-22,6
Meat	0,11	91,5	69,2	66,1	-4,5	-27,8
Milk and eggs	0,01	110,7	139,3	139,3	0,0	+25,8
Other	0,22	-	-	-	-	-
1.1.2 Other agriculture	0,11	162,7	168,9	169,0	+0,1	+3,9
1.2 Forestry	0,11	100,0	100,0	100,0	0,0	0,0
1.3 Fishing	0,18	146,3	130,9	132,2	+1,0	-9,6
1.4 Mining and quarrying	25,01	123,4	114,6	114,8	+0,2	-7,0
Coal	6,79	143,8	122,4	121,2	-1,0	-15,7
Metal ores	12,26	115,6	114,7	116,2	+1,3	+0,5
Other minerals	5,96	116,8	106,5	105,4	-1,0	-9,8
2. Manufacturing	69,70	120,8	117,9	118,1	+0,2	-2,2
2.1 Food	5,40	124,5	118,2	119,0	+0,7	-4,4
Meat	0,62	119,3	118,1	117,6	-0,4	-1,4
Fresh meat	0,20	108,7	105,3	105,3	0,0	-3,1
Meat products	0,42	125,0	124,9	124,2	-0,6	-0,6
Fish and fish products	0,69	117,0	105,7	105,6	-0,1	-9,7
Fruit and vegetable products	1,41	116,3	112,3	114,2	+1,7	-1,8
Fats and oils	0,24	129,9	130,0	130,1	+0,1	+0,2
Milk products	0,19	117,7	119,3	120,7	+1,2	+2,5
Grain mill products	0,36	129,6	122,8	122,8	0,0	-5,2
Sugar	1,38	179,6	141,7	143,5	+1,3	-20,1
Coffee and tea	0,03	120,4	129,1	129,1	0,0	+7,2
Other	0,48	118,0	124,6	125,3	+0,6	+6,2
2.2 Beverages	1,57	117,2	115,2	115,2	0,0	-1,7
Alcoholic	1,44	118,7	116,4	116,4	0,0	-1,9
Non-alcoholic	0,13	100,6	100,9	100,9	0,0	+0,3
2.3 Tobacco products	0,16	112,9	113,1	113,1	0,0	+0,2
2.4 Textiles and made-up goods	1,38	145,3	152,2	152,2	0,0	+4,7
Spinning, weaving and finishing of textiles	0,96	160,4	169,6	169,6	0,0	+5,7
Other textiles	0,42	110,2	111,9	111,9	0,0	+1,5
2.5 Wearing apparel	0,65	115,5	111,8	111,8	0,0	-3,2
Knitted and crocheted fabrics and articles	0,13	114,8	116,1	116,1	0,0	+1,1
Wearing apparel	0,52	115,8	110,8	110,8	0,0	-4,3
Men's and boys' clothing	0,33	124,0	116,9	116,9	0,0	-5,7
Women's and girls' clothing	0,16	124,0	116,9	116,9	0,0	-5,7
Other, including articles of fur	0,03	101,2	101,4	101,4	0,0	+0,2
2.6 Leather and leather products	0,69	121,9	112,3	112,3	0,0	-7,9
2.7 Footwear	0,12	127,7	126,2	126,2	0,0	-1,2
2.8 Wood and wood products	0,84	153,1	157,5	157,5	0,0	+2,9
Sawmilling and planing of wood	0,53	175,5	175,8	175,8	0,0	+0,2
Products of wood, cork and plaiting materials	0,31	115,2	126,5	126,5	0,0	+9,8
2.9 Paper, paper products and printing	3,70	110,5	98,4	98,4	0,0	-11,0
Paper and paper products	3,24	111,8	97,2	97,2	0,0	-13,1
Publishing and printing	0,46	102,3	108,0	108,0	0,0	+5,6
2.10 Products of petroleum and coal	3,20	138,6	108,3	105,1	-3,0	-24,2
2.11 Chemicals and chemical products	9,41	122,8	119,9	119,9	0,0	-2,4
Basic chemicals	6,68	122,7	121,2	121,2	0,0	-1,2
Fertilizers	0,91	115,1	112,3	112,3	0,0	-2,4
Other basic chemicals	5,77	123,9	122,6	122,6	0,0	-1,0
Compounded chemical products	2,73	122,4	116,1	116,1	0,0	-5,1
Pharmaceutical products	0,36	125,8	123,4	123,4	0,0	-1,9
Other compounded chemical products	2,37	122,3	115,4	115,4	0,0	-5,6

Table 14 - Production Price Index for exported commodities according to group (concluded)

Base : 2000 = 100

Origin/Group	Weight	Indices			% - change between	
		Aug 2002	Jul 2003	Aug 2003	Jul 2003 and Aug 2003	Aug 2002 and Aug 2003
2.12 Rubber and plastic products	1,02	124,9	130,3	130,3	0,0	+4,3
Rubber products	0,51	144,4	148,1	148,1	0,0	+2,6
Plastic products	0,51	104,4	111,6	111,6	0,0	+6,9
2.13 Non-metallic mineral products	0,87	111,9	117,4	117,0	-0,3	+4,6
Glass and glass products	0,23	115,4	116,9	116,2	-0,6	+0,7
Other	0,64	110,8	117,7	117,5	-0,2	+6,0
2.14 Basic metals	22,75	122,4	120,1	121,7	+1,3	-0,6
Ferrous	10,75	128,2	129,3	131,5	+1,7	+2,6
Non-ferrous	12,00	117,0	111,9	112,8	+0,8	-3,6
2.15 Metal products	2,09	123,3	125,5	126,1	+0,5	+2,3
Structural metal products	1,02	122,0	124,7	125,0	+0,2	+2,5
Other	1,07	123,8	125,5	126,4	+0,7	+2,1
2.16 Non-electrical machinery and equipment	5,61	116,9	122,4	121,8	-0,5	+4,2
General purpose machinery	2,25	115,5	115,5	114,4	-1,0	-1,0
Special purpose machinery	3,09	118,6	128,0	127,7	-0,2	+7,7
Household appliances	0,27	111,1	119,6	119,5	-0,1	+7,6
2.17 Office, accounting and computing machinery	0,52	100,0	100,0	100,0	0,0	0,0
2.18 Electrical machinery and apparatus	1,13	114,0	114,2	114,5	+0,3	+0,4
Electric motors, generators and transformers	0,17	125,4	128,6	126,9	-1,3	+1,2
Electricity distribution and control apparatus	0,23	112,7	116,7	116,7	0,0	+3,5
Insulated wire and cable	0,15	124,8	118,2	121,0	+2,4	-3,0
Other	0,58	108,6	108,2	108,5	+0,3	-0,1
2.19 Radio, television and communication equipment and apparatus	0,64	106,5	108,1	108,1	0,0	+1,5
2.20 Medical, precision and optical instruments	0,54	129,8	134,8	134,8	0,0	+3,9
Medical appliances and instruments for measuring, checking, testing and navigating	0,46	133,3	139,4	139,4	0,0	+4,6
Other, including watches and clocks	0,08	109,4	107,7	107,7	0,0	-1,6
2.21 Transport equipment	4,26	111,0	111,4	110,8	-0,5	-0,2
Motor vehicles, parts and accessories	3,40	112,9	113,5	112,8	-0,6	-0,1
Motor vehicles	1,16	101,0	101,0	99,8	-1,2	-1,2
Bodies, trailers and semi-trailers	0,86	100,6	100,6	100,7	+0,1	+0,1
Parts and accessories	1,38	130,9	132,6	131,6	-0,8	+0,5
Other transport equipment	0,86	103,5	103,2	103,3	+0,1	-0,2
2.22 Furniture	1,78	99,9	99,3	99,4	+0,1	-0,5
2.23 Other manufactures	1,37	104,2	105,2	94,1	-10,6	-9,7
3. Electricity, Gas Steam and Water	-	-	-	-	-	-
3.1 Electricity	-	-	-	-	-	-
3.2 Gas, Steam and water	-	-	-	-	-	-

Table 15 - Production Price Index for materials used in certain industries

Base : 2000 = 100

Industry	Indices			% -change between	
	Aug 2002	Jul 2003	Aug 2003	Jul 2003 and Aug 2003	Aug 2002 and Aug 2003
Building and construction	124,5	132,0	132,3	+0,2	+6,3
Building industries	123,7	132,2	132,6	+0,3	+7,2
Civil engineering	120,7	131,7	132,7	+0,8	+9,9
Mechanical engineering	121,5	125,2	126,5	+1,0	+4,1
Electrical engineering	123,8	124,6	125,4	+0,6	+1,3

Table 16 - Production Price Index for selected materials

Base : 2000 = 100

Type of materials	Indices			% -change between	
	Aug 2002	Jul 2003	Aug 2003	Jul 2003 and Aug 2003	Aug 2002 and Aug 2003
Wool, auction prices, 18 types	177,0	171,2	171,1	-0,1	-3,3
Coal, bituminous	108,6	118,3	117,9	-0,3	+8,6
Coal, bituminous - for local sales	145,4	161,5	163,6	+1,3	+12,5
- Cobbles, grade A	158,2	153,4	162,8	+6,1	+2,9
- Cobbles, grade B	166,1	123,3	130,9	+6,2	-21,2
- Large nuts, grade A	138,8	152,6	152,4	-0,1	+9,8
- Large nuts, grade B	149,5	169,3	169,0	-0,2	+13,0
- Small nuts, grade A	173,5	182,4	176,9	-3,0	+2,0
- Small nuts, grade B	155,0	180,4	180,4	0,0	+16,4
- Peas, grade A	144,7	162,0	167,4	+3,3	+15,7
- Peas, grade B	138,5	146,2	150,9	+3,2	+9,0
Anthracite - for local sales					
- Grade SP	100,9	100,9	100,9	0,0	0,0
- Grade A	100,7	100,7	100,7	0,0	0,0
Wood products, excluding minewood	118,7	126,0	126,1	+0,1	+6,2
SA Pine, kiln dried	146,1	169,6	169,6	0,0	+16,1
Paper, newsprint	146,4	166,4	166,4	0,0	+13,7
Kraft paper	141,3	149,6	149,5	-0,1	+5,8
Boxes, corrugated cardboard	127,5	127,4	127,4	0,0	-0,1
Leather, bovine hide	159,4	138,1	132,8	-3,8	-16,7
Rubber crude	114,9	118,3	118,3	0,0	+3,0
- Synthetic	129,6	136,5	136,5	0,0	+5,3
- Synthetic - Local	129,6	136,5	136,5	0,0	+5,3
Tyres and tubes	125,6	140,3	140,3	0,0	+11,7
Plastic bottles	133,3	136,7	136,7	0,0	+2,6
Plastic, bulk forms	131,3	131,8	132,1	+0,2	+0,6
Sulphuric acid	114,2	121,4	121,4	0,0	+6,3
Paints	132,8	141,7	141,6	-0,1	+6,6
Foam insulation materials	136,6	136,6	140,6	+2,9	+2,9
- Polyurethane	136,6	136,6	140,6	+2,9	+2,9
Petro-chemical building materials	123,3	126,7	126,9	+0,2	+2,9
Waterproofing	130,6	138,3	138,3	0,0	+5,9
Resilient floor coverings	146,1	149,4	149,4	0,0	+2,3
Petrol, 93 octane - Coast	124,7	117,5	118,2	+0,6	-5,2
- Witwatersrand	124,7	117,5	118,2	+0,6	-5,2
Diesel oil - Coast and Witwatersrand	127,0	108,0	103,9	-3,8	-18,2
- Retail Metropolitan and other urban areas	148,4	175,1	178,3	+1,8	+20,1
- Retail Metropolitan areas	126,7	133,7	136,3	+1,9	+7,6
Transformer oil	166,0	179,6	170,4	-5,1	+2,7
Bitumen	130,1	137,6	140,7	+2,3	+8,1
Modified Bitumen sheeting	120,6	125,3	125,3	0,0	+3,9
Bitumen and Acrylic Emulsion	120,6	129,2	129,2	0,0	+7,1
Tar	125,8	99,3	100,5	+1,2	-20,1
Bricks - Stock	124,4	140,8	142,5	+1,2	+14,5
- Face	122,7	136,6	137,2	+0,4	+11,8
Cement building blocks	148,6	153,2	160,6	+4,8	+8,1
Sand	114,9	124,1	124,1	0,0	+8,0
Aggregated crushed stone	118,2	143,3	143,1	-0,1	+21,1
Ordinary and extended cement	129,5	151,4	151,0	-0,3	+16,6
Natural stone, cut and sawn	108,2	110,2	110,2	0,0	+1,8
Glass, for building industry	143,9	125,9	125,9	0,0	-12,5
Gypsum board	129,5	129,5	129,5	0,0	0,0
Drop in ceiling tiles-gypsum	123,6	123,6	123,6	0,0	0,0
Drop in ceiling tiles-masonite	136,1	149,0	144,7	-2,9	+6,3
Profiled aluminium roofing	141,2	128,8	128,1	-0,5	-9,3
Etruded aluminium section	151,1	151,1	151,1	0,0	0,0

Table 16 - Production Price Index for selected materials (concluded)

Base : 2000 = 100

Type of materials	Indices			% -change between	
	Aug 2002	Jul 2003	Aug 2003	Jul 2003 and Aug 2003	Aug 2002 and Aug 2003
Ironmongery	122,4	119,3	119,3	0,0	-2,5
Self-Adhesive sheeting	118,6	118,6	118,6	0,0	0,0
Joint Sealants	118,6	137,8	137,8	0,0	+16,2
Flush doors	117,9	138,7	138,7	0,0	+17,6
Drainage	114,3	125,4	121,3	-3,3	+6,1
Plumbing	111,4	115,7	115,4	-0,3	+3,6
Ceramic and encaustic wall and floor tiles and mosaics	104,7	107,9	107,6	-0,3	+2,8
Ceiling materials	134,9	139,3	139,3	0,0	+3,3
Partitioning materials	134,9	139,3	139,3	0,0	+3,3
Fibrous insulation - Preformed pipe sections	110,2	120,0	125,9	+4,9	+14,2
- Batten board	120,4	130,3	136,8	+5,0	+13,6
- Mattresses	119,1	129,7	136,2	+5,0	+14,4
- Ceiling insulation	104,5	115,6	115,6	0,0	+10,6
Insulator, porcelain	135,4	130,7	130,7	0,0	-3,5
Containers, glass	125,5	132,5	139,5	+5,3	+11,2
Billets, mild steel	129,2	142,2	142,2	0,0	+10,1
Angles, mild steel	126,0	134,6	134,6	0,0	+6,8
Structural steel, unworked	150,5	121,2	121,2	0,0	-19,5
Structural steel products	129,7	147,3	146,6	-0,5	+13,0
Reinforcing steel	135,0	155,6	155,6	0,0	+15,3
Plate, mild steel	115,4	152,2	152,2	0,0	+31,9
Sheet, uncoated	153,0	118,8	118,8	0,0	-22,4
Sheet, galvanized	115,4	152,2	152,2	0,0	+31,9
Tinplate	130,0	139,4	139,4	0,0	+7,2
Steel tubes, pipes and fittings	107,4	108,0	107,6	-0,4	+0,2
Copper, basic forms	131,8	125,1	125,1	0,0	-5,1
Aluminium - Anodising	105,3	113,7	113,7	0,0	+8,0
- Basic forms	128,6	106,4	106,4	0,0	-17,3
- Extruded products	129,8	120,7	120,7	0,0	-7,0
- Sheeting	115,5	106,7	110,7	+3,7	-4,2
Bearings, ball and roller	153,9	153,8	154,1	+0,2	+0,1
Electrical contracting materials	123,5	123,5	120,8	-2,2	-2,2
Construction machinery (excluding trucks)	120,5	117,3	117,9	+0,5	-2,2
Trucks	136,1	140,6	140,5	-0,1	+3,2
Trucks and buses	134,5	137,6	137,6	0,0	+2,3
Civil engineering plant	144,9	140,8	138,8	-1,4	-4,2
Diesel for the civil engineering industry	126,7	133,7	136,3	+1,9	+7,6
Mining machinery	110,5	114,1	117,0	+2,5	+5,9
Rubber industry's indices:					
Natural rubber (imported)	90,0	111,8	112,9	+1,0	+25,4
Carbon black - N774 (local)	100,0	110,3	110,3	0,0	+10,3
- N660	100,0	110,2	110,2	0,0	+10,2
Coumarone indene resin (imported)	145,7	144,0	144,0	0,0	-1,2
Synthetic rubber - 1502	148,6	155,8	155,8	0,0	+4,8
- 1712	148,5	149,6	149,6	0,0	+0,7
Polybutadiene	161,3	165,2	165,2	0,0	+2,4
Processing oil	100,0	87,1	87,1	0,0	-12,9
Bead wire	100,0	96,7	96,7	0,0	-3,3
Cement (Retail price)	121,9	138,5	138,5	0,0	+13,6
Building boards	128,1	131,1	131,4	+0,2	+2,6
Concrete roof tiles	144,5	157,5	163,6	+3,9	+13,2
Fibre cement roof sheet	147,9	156,8	156,8	0,0	+6,0
Coated profiled GMS sheeting (roofing)	113,7	152,2	152,2	0,0	+33,9
Imported Meranti	100,0	81,4	79,6	-2,2	-20,4
Vinyl tiles flooring	111,2	129,6	129,6	0,0	+16,5
Vinyl sheeting (flooring)	111,6	118,3	118,3	0,0	+6,0
Woven needle punch carpeting	122,5	128,8	128,8	0,0	+5,1
Lever locks	113,0	119,0	118,7	-0,3	+5,0
Hinges	127,2	141,7	144,5	+2,0	+13,6
Cylinder lock set	147,5	156,1	156,1	0,0	+5,8
Aluminium lever furniture	128,7	136,1	136,1	0,0	+5,7
Small steel sections	116,0	116,0	116,0	0,0	0,0
Stainless steel products, flat rolled	123,8	134,9	134,9	0,0	+9,0
White glazed ceramic tiles	122,4	122,4	122,4	0,0	0,0
Tile adhesives	134,5	142,6	142,6	0,0	+6,0
PVC Pipes	117,6	124,9	124,9	0,0	+6,2
Concrete pipes	129,3	129,3	129,3	0,0	0,0
Wash and basin	105,8	114,6	114,6	0,0	+8,3
Water-closet system (WC's)	107,6	108,3	109,1	+0,7	+1,4
Copper Piping	132,5	129,2	116,9	-9,5	-11,8
Sementitious paints	127,6	152,0	152,0	0,0	+19,1
Enamel paints	128,5	140,5	140,5	0,0	+9,3

Retail Price index for diesel Metropolitan areas  
Base year: 2000=100

Year	Jan.	Feb.	Mar.	Apr.	May	Jun.	Jul.
2003	133,6	133,5	135,7	138,9	137,6	132,8	133,7



Table 17 - Seasonally adjusted group and product indices of the Production Price Index

Description	Weights	Indices					
		Mar 2003	Apr 2003	May 2003	Jun 2003	Jul 2003	Aug 2003
All commodities for consumption in South Africa	100,00	126,7	125,9	124,6	126,3	127,0	126,3
Locally produced commodities	73,00	126,9	126,4	125,6	127,6	129,2	128,4
Imported commodities	27,00	125,5	124,5	121,6	122,6	120,4	119,7
Output of South African industry							
Total output	100,00	125,2	124,3	123,4	125,1	126,3	125,6
For South African consumption	100,00	126,9	126,4	125,6	127,6	129,2	128,4
Agriculture, Forestry and Fishing	12,50	126,6	122,5	125,2	126,0	131,0	125,2
Tobacco and Beverages	5,76	122,3	124,5	126,2	127,2	129,2	130,1
Textiles, Clothing and Footwear	5,39	122,3	122,6	122,7	122,4	122,3	122,9
Machinery and Transport equipment	12,50	123,0	123,4	123,8	124,0	124,6	123,6
Mining, Electricity, Gas and Water	9,96	101,9	103,3	102,4	119,4	123,5	125,5
Basic metals and Metal products	7,78	124,9	124,1	123,9	125,1	126,2	127,0
Food	12,44	143,9	142,3	138,9	139,3	140,1	139,5
Total Manufacturing	77,54	130,1	130,0	128,6	129,1	129,5	129,5

## ADDITIONAL INFORMATION

## EXPLANATORY NOTES

- Introduction** 1 This publication contains results of the monthly Surveys of Prices of Locally Produced Commodities (which are locally sold or exported) and Imported Commodities. These indices for commodities are classified to designated industries of the South African economy. They are calculated on the base 2000=100.
- Scope of the PPI survey** 2 The indices are compiled on a gross industry basis, i.e. each index relates to those articles, which are produced, imported and exported by the designated industries of the South African economy. Selling prices are collected from manufacturers, importers and Exporters.
- Classification** 3 The 1993 edition of the Standard Industrial Classification of all Economic Activities (SIC), Fifth edition, Report No. 09-90-02, was used to classify the statistical units in the survey. The SIC is based on the 1990 International Standard Industrial Classification of all Economic Activities (ISIC) with suitable adaptations for local conditions. Statistics in this publication are presented at SIC subdivision level.
- 4 This publication presents information which measures changes in prices of products, that are produced, imported or exported by establishments (branches). It excludes semi-processed products, which have been produced by the establishment within the manufacturing division and carried over to other establishments within the manufacturing division for further processing.
- Statistical unit** 5 The statistical unit is the establishment (branch), which is the smallest economic unit that functions as a separate entity. Each statistical unit is classified to an industry according to the classification of the products that the unit manufacturers, imports or exports.
- Survey methodology and design** 6 Different phases of sampling takes place. Firstly, a sample of products, based on the information collected through the Manufacturing census of 1996 and 1995/96 information on imports and exports received from Customs and Excise, SARS is designed and drawn. An indicator product is selected purposively within each product group. To be selected, a product should be part of the top 80% of products manufactured, imported or exported in that product group. Furthermore, it must be possible to obtain price quotations for the relevant product during the whole year. The sample of indicator products is revised every five years at which stage the weights of the indicator products/groups are also revised.
- This survey is collected by mail from a sample of approximately 3 500 manufacturers, 3 500 exporters and 3 500 importers. The indices are based on producer prices at the point of production in the case of commodities produced in South Africa, and wholesale prices “ex-warehouse”, in the case of imported commodities. Prices “delivered” or “free on rail” are accepted if this is the normal basis of quotation.
- Currently, an average of 20 000 price quotations are collected each month from approximately 5 500 outlets by means of 6 000 questionnaires. The indices are based on retail trade and service prices.
- Pricing basis** 7 Price information refers to the first seven days of the relevant month, except in the case of mining and most of the agricultural products, where it refers to the average price for the month. The average price of imported crude petroleum, used in the compilation of the import component of the PPI, is calculated as the value (in Rands) divided by the quantity of imported crude petroleum for the relevant month. **The prices of all items exclude Value Added Tax (VAT).**

- Weighting basis**      **8**      The index is a fixed weights index as the weights are determined in the base period and they do not change until the next base period. The commodities directly represented in the index were selected on the basis of the values of sales of products –
- produced during the 1995-96 financial year for locally produced commodities;
  - exported during 1996; and
  - imported during 1996.

These commodities constitute approximately 80 per cent of the total value of production/imports/exports during the relevant year as indicated above. Weights were allocated to each product in accordance with the value of sales for each item during the 1995/96 financial year. The basis on which the weighting structure of each main PPI component, indicated in the tables published in this statistical release, was calculated, is indicated in table C.

**Table C – Basis on which the weighting structure of each PPI table is based**

<b>Number of table in this statistical release</b>	<b>PPI component</b>	<b>Basis for weighting structure</b>
Table 10	Commodities for South African consumption	Sales value of South African production minus exports, plus imports
Table 11	Total output of South African industry groups	Sales value of South African production
Table 12	Output of South African industry groups for South African consumption	Sales value of South African production minus exports
Table 13	Imported commodities	Sales value of imported commodities
Table 14	Exported commodities	Sales value of exported commodities
Table 15	Materials used in certain industries	Value of materials used

- Processing of price information**      **9**      The prices that are quoted for the different products are checked. If the price difference between two successive periods are outside the specified range of increase (+10%) or decreases (-5%), the current price levels are confirmed with the relevant respondents through a telephone inquiry.
- Calculating product price indices**      **10**      Price relatives are calculated for each product per respondent by dividing the current prices by the previously quoted price. The price relative for each product is calculated by means of the geometric mean of the price relatives for each respondent. This price relative for each product is then applied to the product index for the previous month in order to obtain a product index for the relevant month.
- Calculating group price indices**      **11**      Group price indices are calculated by weighting product indices with the relevant product weight, according to each group's (local, import, export) weighting structure, using the Laspeyres index formula.
- Contributions of specific products to the total PPI**      **12**      The monthly (annual) contribution of a specific product or group of products to the total PPI is calculated by multiplying the weight of this product or group of products with the monthly (annual) change in the index for this product or group of products, divided by the index for 'All groups'.

<b>Price indices for diesel</b>	<b>13</b>	<p>The price index for diesel (Coast and Witwatersrand) is based on the refinery prices of diesel.</p> <p>The retail price index for diesel is based on retail prices obtained from a sample of 84 retail outlets throughout the country. The diesel indices for the different areas are weighted according to the diesel volume distribution as obtained from the South African Petroleum Industry Association (SAPIA).</p> <p>The diesel for the civil engineering industry index is based on retail prices obtained from a sample of only 48 retail outlets in the historical metropolitan areas of the CPI. The diesel indices for the different areas are weighted according to the diesel volume distribution in the relevant areas as obtained from the South African Petroleum Industry Association (SAPIA).</p>										
<b>Seasonal adjustment</b>	<b>14</b>	<p>Seasonal fluctuations in a time series are those fluctuations, which usually tend to occur at about the same time and with the same magnitude each year. This may be the result of climatic influences or other social and commercial habits (e.g. the price of bread, which was previously revised in October of each year). In the analysis of time series, Stats SA makes use of the X-11 technique, which was developed by the American Bureau of Census. The seasonally adjusted indices for the latest month are calculated with seasonal factors, which are based on a time series analysis of information up to and including the previous month. Thus these indices change every time that another month is added. In the past Stats SA did not revise the seasonal adjusted indices on a monthly basis, but revised the historical seasonally adjusted indices for a year, annually in January of each year. This methodology caused diversion between the annual changes in the seasonally adjusted and actual indices. After thorough investigations it was decided that the latest seasonally adjusted indices will be published every month. This means that the seasonally adjusted figures do not have a fixed base such as the figures of the time series for which seasonally adjustments were done. It also implies that the values of the seasonally adjusted indices are changing on a monthly basis.</p>										
<b>Reliability of estimates</b>	<b>15</b>	<p>Inaccuracies may occur because of imperfections in reporting by enterprises and errors made in collection and processing of the data. Inaccuracies of this kind are referred to as non-sampling errors. Every effort is made to reduce non-sampling errors to a minimum by careful designing the questionnaires, editing data and efficient operating procedures.</p>										
<b>Related publications</b>	<b>16</b>	<p>Users may also wish to refer to the following publications, which are available from Stats SA -</p> <ul style="list-style-type: none"> <li>• Bulletin of Statistics; and</li> <li>• SA Statistics.</li> </ul>										
<b>Unpublished statistics</b>	<b>17</b>	<p>In some cases, Stats SA can also make available formation, which is not published. This information can be made available in one or more of the following ways: computer printout, diskette or CD. Generally a fee is levied for providing unpublished information.</p>										
<b>Symbols and abbreviations</b>	<b>18</b>	<table border="0"> <tr> <td>Stats SA</td> <td>Statistics South Africa</td> </tr> <tr> <td>..</td> <td>not available</td> </tr> <tr> <td>-</td> <td>nil or not applicable</td> </tr> <tr> <td>*</td> <td>revised since previous publication</td> </tr> <tr> <td>avg</td> <td>average</td> </tr> </table>	Stats SA	Statistics South Africa	..	not available	-	nil or not applicable	*	revised since previous publication	avg	average
Stats SA	Statistics South Africa											
..	not available											
-	nil or not applicable											
*	revised since previous publication											
avg	average											

**GLOSSARY**

<b>Annual percentage change</b>	The annual percentage change is the change in the index of the relevant month of the current year compared with the index of the same month in the previous year expressed as a percentage and is generally accepted as the yardstick of PPI inflation.
<b>Average annual percentage change</b>	The average annual percentage change is the change in the average index of one year compared with the average index of the previous year expressed as a percentage.
<b>Contribution of specific products to the total PPI</b>	The monthly (annual) contribution of a specific product or group of products to the total PPI is calculated by multiplying the weight of the index with the monthly (annual) change of the index divided by the index for "All Items".
<b>Establishment</b>	An establishment (branch) is the smallest economic unit that functions as a separate entity.
<b>Indicator products</b>	Indicator products are those products whose sale value represent 80% of the total value of sales (turnover) in an industrial subgroup.
<b>Monthly percentage change</b>	The monthly percentage change is the change in the index of the relevant month compared to the index of the previous month expressed as a percentage.
<b>Weights</b>	The weights are the relevant importance of the indicator products in that subgroup. The weight of a product is calculated by dividing the actual value of sales of the relevant indicator product by the total value of sales in that subgroup.

**For more information**

Stats SA publishes approximately 300 different releases each year. It is not economically viable to produce them in more than one of South Africa's eleven official languages. Since the releases are used extensively, not only locally but also by international economic and social-scientific communities, Stats SA releases are published in English only.

Stats SA has copyright on this publication. Users may apply the information as they wish, provided that they acknowledge Stats SA as the source of the basic data wherever they process, apply, utilise, publish or distribute the data: and also that they specify that the relevant application and analysis (where applicable) result from their own processing of data.

**Advance release calendar**

An advance release calendar is disseminated on <http://www.statssa.gov.za>

**Stats SA products**

A complete set of Stats SA publications is available at the Stats SA Library and the following libraries -

National Library of South Africa, Pretoria Division  
National Library of South Africa, Cape Town Division  
Natal Society Library, Pietermaritzburg  
Library of Parliament, Cape Town  
Bloemfontein Public Library  
Johannesburg Public Library  
Eastern Cape Library Services, King William's Town  
Central Regional Library, Polokwane  
Central Reference Library, Nelspruit  
Central Reference Collection, Kimberley  
Central Reference Library, Mmabatho

Stats SA also provides a subscription service.

**Electronic services**

A large range of data are available via on-line services, diskette and computer printouts. For more details about our electronic data services, contact (012) 310 8600/8390/8351/4892/8496/8095.

You can visit us on the Internet at: <http://www.statssa.gov.za>

**Enquiries**

Telephone number: (012) 310 8600/8390/8351/4892/8496/8095 (user enquiries)  
(012) 310 8421/170/077 (technical enquiries)  
(012) 310 8161 (publishing)  
(012) 310 8490 (library)

Fax number: (012) 328 3932

e-mail: [ppi@statssa.gov.za](mailto:ppi@statssa.gov.za)

Postal address: Private Bag x44, Pretoria, 0001