

**Statistics
South Africa**

Preferred supplier of quality statistics



Statistical release

P0142.1

PRODUCER PRICE INDEX (PPI)

April 2008

**Embargoed until:
29 May 2008
11:30**

Enquiries:

Dr. Hlabi Morudu
(012) 310 8377

Forthcoming issue:

May 2008

Expected release date

26 June 2008

Statistics South Africa • Mbalo-mbalo dza Afrika Tshipembe • Tinhlayo-tiko ta Afrika-Dzonga • Dipalopalo tsa Aforika Borwa • Ezezibalo zaseNingizimu Afrika
Dipalopalo tša Afrika Borwa • Dipalopalo tsa Afrika Borwa • Ubalo lwaseMzantsi Afrika • Telubalo eNingizimu Afrika • iNanimbalo leSewula Afrika • Statistiek Suid-Afrika

email: info@statssa.gov.za
www: www.statssa.gov.za

170 Andries Street • Private Bag X44, 0001 Pretoria, South Africa
Tel: +27(12) 310 8911, Fax: +27(12) 321 7381

KEY FIGURES AS AT APRIL 2008

Producer Price Index and rates of change according to main components

Base: 2000 = 100

| Producer Price Index components | indices | | | Percentage change between | |
|---------------------------------|----------|----------|----------|---------------------------|-----------------------|
| | Apr 2007 | Mar 2008 | Apr 2008 | Mar 2008 and Apr 2008 | Apr 2007 and Apr 2008 |
| Domestic output | 154,9 | 170,6 | 174,1 | +2,1 | +12,4 |
| Exported commodities | 156,1 | 165,6 | 165,5 | -0,1 | +6,0 |
| Imported commodities | 139,5 | 159,0 | 169,1 | +6,4 | +21,2 |

KEY FINDINGS AS AT APRIL 2008

The annual percentage change in the PPI is higher at +12,4% at April 2008 (i.e. the PPI at April 2008 compared with that at April 2007).

The Producer Price Index (PPI) for domestic output shows an annual rate of change of 12,4% at April 2008 (i.e. the PPI at April 2008 compared with that at April 2007). This rate is 0,5 of a percentage point higher than the corresponding annual rate of 11,9% at March 2008 (i.e. the PPI at March 2008 compared with that at March 2007) (see Table 1 (A)). This higher annual rate at April 2008 compared with that at March 2008 could be explained by increases in the annual rate of change in the Producer Price Indices for:

- *Mining and quarrying: the annual rate increased from +18,8% at March 2008 to +21,0% at April 2008.*
- *Forestry: the annual rate increased from +5,4% at March 2008 to +14,2% at April 2008.*
- *Metal products: the annual rate increased from +7,0% at March 2008 to +12,3% at April 2008.*
- *Electricity: the annual rate increased from +5,0% at March 2008 to +11,0% at April 2008.*
- *Chemicals and chemical products: the annual rate increased from +8,7% at March 2008 to +10,5% at April 2008.*
- *Tobacco products: the annual rate increased from +6,6% at March 2008 to +10,1% at April 2008.*
- *Electrical machinery and apparatus: the annual rate increased from +5,8% at March 2008 to +6,4% at April 2008.*

This increase was partially counteracted by decreases in the annual rate of change for:

- *Products of petroleum and coal: the annual rate decreased from +37,2% at March 2008 to +33,6% at April 2008.*
- *Agricultural products: the annual rate decreased from +16,3% at March 2008 to +9,7% at April 2008.*
- *Gas and water: the annual rate decreased from +14,2% at March 2008 to +13,1% at April 2008.*
- *Basic metals: the annual rate decreased from - 1,3% at March 2008 to - 2,6% at April 2008.*

From March 2008 to April 2008 the PPI for domestic output increased by 2,1%.

The monthly increase of 2,1% in the PPI for domestic output is mainly due to relatively large monthly increases in the price indices for mining and quarrying products (+ 1,0 percentage point), products of petroleum and coal (+ 0,4 of a percentage point), electricity (+ 0,3 of a percentage point), chemicals and chemical products (+ 0,2 of a percentage point) and metal products (+ 0,2 of a percentage point) (see table 3, p.11).

The annual rate of change in the PPI for exported commodities is lower at +6,0% at April 2008 (i.e. the PPI at April 2008 compared with that at April 2007).

The PPI for exported commodities shows an annual rate of increase of 6,0% at April 2008 (i.e. the PPI at April 2008 compared with that at April 2007). This rate is 2,0 percentage points lower than the corresponding annual rate of 8,0% at March 2008 (i.e. the PPI at March 2008 compared with that at March 2007) (see Table 1(B)).

The annual increase of 6,0% in the PPI for exported commodities is mainly due to relatively large annual increases in the price indices of mining and quarrying products (+5,9 percentage points), all other groups (+1,7 percentage points), products of petroleum and coal (+0,9 of a percentage point), food at manufacturing (+0,2 of a percentage point) and non-electrical machinery and equipment (+0,2 of a percentage point). These increases were partially counteracted by a decrease in basic metals (-3,5 percentage points) (see Table 4).

From March 2008 to April 2008 the PPI for exported commodities decreased by 0,1%.

The monthly decrease of 0,1% in the PPI for exported commodities is mainly due to a monthly decrease in the price index for basic metals (- 0,1 of a percentage point) (see Table 5).

The annual rate of change in the PPI for imported commodities is higher at +21,2% at April 2008 (i.e. the PPI at April 2008 compared with that at April 2007).

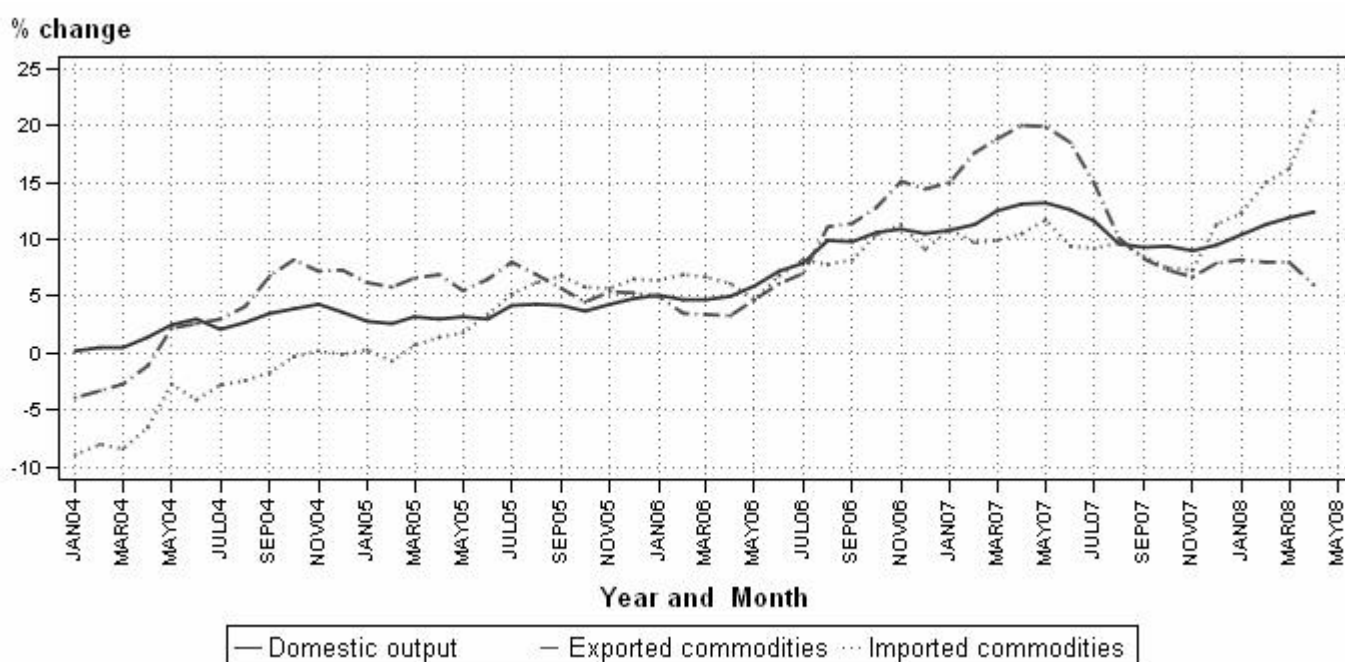
The PPI for imported commodities shows an annual rate of increase of 21,2% at April 2008 (i.e. the PPI at April 2008 compared with that at April 2007). This rate is 5,0 percentage points higher than the corresponding annual rate of 16,2% at March 2008 (i.e. the PPI at March 2008 compared with that at March 2007) (see Table 1 (C)).

The annual increase of 21,2% in the PPI for imported commodities is mainly due to relatively large annual increases in the price indices for mining and quarrying products (+20,0 percentage points), chemicals and chemical products (+1,5 percentage points), food at manufacturing (+1,0 percentage points), non-electrical machinery and equipment (+0,5 of a percentage point), products of petroleum and coal (+0,4 of a percentage point), agricultural products (+0,3 of a percentage point) and transport equipment (+0,2 of a percentage point). These increases were partially counteracted by decreases in the price indices of office accounting and computing machinery (-0,1 of a percentage point), radio, television and communication equipment and apparatus (-0,1 of a percentage point) and all other groups (-3,1 of a percentage point) (see Table 6).

From March 2008 to April 2008 the PPI for imported commodities increased by 6,4%.

The monthly increase of 6,4% in the PPI for imported commodities is mainly due to relatively large monthly increases in the price index for mining and quarrying products (+ 6,1 percentage points), food at manufacturing (+ 0,2 of a percentage point) and all other groups (+ 0,2 of a percentage point) (see Table 7).

Figure 1 – Annual percentage change in the Producer Price Index:



Source: Stats SA

Note to users of the Producer Price Index

Revisions

In the March 2008 release of the Producer Price Index (PPI) it was indicated that small revisions may be made to the data. As shown in the following table, the March 2008 PPI for domestic output (all groups) has been revised from 170,5 to 170,6, which has had the effect of raising March's annual rate of change from 11,8% to 11,9%.

| | All groups, PPI for domestic output (Tables 1A and 8) | | | | | |
|---------------|--|------------------|----------------|---|------------------|----------------|
| | Published in April 2008 (March 2008 release) | | | Published in May 2008 (April 2008 release) | | |
| | Index | % month-on-month | % year-on-year | Index | % month-on-month | % year-on-year |
| Jan-08 | 164,9 | 1,0 | 10,4 | 164,9 | 1,0 | 10,4 |
| Feb-08 | 167,2 | 1,4 | 11,3 | 167,2 | 1,4 | 11,3 |
| Mar-08 | 170,5 | 2,0 | 11,8 | 170,6* | 2,0 | 11,9* |
| Apr-08 | – | – | – | 174,1 | 2,1 | 12,4 |

* revised

Revisions were made where necessary in the subcomponents of the PPI in both February and March. In the case of February these had no further impact on the all groups index for domestic output (users will recall that the February 2008 annual rate was initially published as 11,2% and was subsequently revised to 11,3%).

The recent revisions to the PPI have been the result of several difficulties in changing from the old to the new weights, which coincided with other changes such as products, respondents and the classification system. New processing systems were developed, but where these had to be integrated with existing systems unexpected problems were encountered such as the miscoding of certain products. The systems problems have been successfully resolved. In some cases data were received later than usual (a consequence of working with new respondents), which complicated the determination of initial index values for new products.

Revised releases for February and March 2008 will be provided on the Stats SA website.

Contribution tables (change from old to new weights in annual tables)

Tables 2, 4 and 6 provide the subcomponents' contributions to the annual percentage change in the all groups index. Up until the March 2008 PPI release these were estimated using the old weights because their impact heavily outweighed the impact of the new weights in the year-on-year change. Note that the PPI will become strictly comparable on a year-on-year basis only from the February 2009 release (to be published in March 2009). In the April 2008 release the annual contribution tables are estimated using the new weights, but users should be aware that until the February 2009 release they will be an approximation only.

The contributions to the month-on-month changes (Tables 3, 5 and 7) are unaffected (they are calculated using the new weights).

Consistency of year-on-year rates of change

We received several enquiries regarding the year-on-year rate of change in the category Basic metals (January to March 2008). The annual rate is not comparable with those of its subcomponents. A detailed explanation was provided on the Stats SA website and is repeated below. Other categories are similarly affected, and it should be noted that in general the annual changes of individual categories are not comparable with the annual changes of their subcomponents, because the PPI will become strictly comparable on a year-on-year basis only from the February 2009 release. This is caused not only by changes in products but also by changes in weights, which cause the year-on-year rates to be hybrid rates of change (February 2007 to January 2008). An example of the inconsistency is the category Electricity, gas and water in the domestic PPI in April 2008. The annual change of 10,3% lies below electricity (11,0%)

and water and gas (13,1%). This is the result of the higher weight of water and gas (compared with the old weights) and its contribution to driving the overall index forward month by month.

Note on Basic metals in the Producer Price Index (Table 8 – Producer Price Index for domestic output)

In the new presentation of the Producer Price Index (PPI) the category Basic metals has two subcategories in the domestic output table (Table 8), namely (1) Basic iron and steel and (2) Rolled, drawn and folded products. In the old presentation of the PPI the two subcategories of Basic metals were (1) Ferrous and (2) Non-ferrous. The change from old to new was driven by the change from a SIC-based classification system to the Central Product Classification (CPC) system as well as the relative importance of products as determined by the manufacturing large sample survey.

The subcategory Basic iron and steel in the new presentation corresponds to the subcategory Ferrous. However, the subcategory Rolled, drawn and folded products is a new series which replaced Non-ferrous.

In the March 2008 PPI release, the Basic metals index showed a **decrease** of 1,3% year-on-year. The Basic iron and steel index showed an **increase** of 9,7% year-on-year and the Rolled, drawn and folded products index showed an **increase** of 1,0% year-on-year. Analysts have noted the apparent inconsistency between Basic metals (annual decrease) and the two subcategories (annual increase). However, such a comparison is misleading and should not be made. The annual percentage changes in Basic metals and its subcategory Rolled, drawn and folded products cannot be compared, since the latter only came into use in 2008. During 2007 the Basic metals index was determined in part by the Non-ferrous index, which fell substantially during the second half of 2007.

The year-on-year rate of change in the Basic metals index was positive in December 2007 (1,0%) but negative in March 2008 (-1,3%). This is partly the result of a base effect. From December 2007 to March 2008 the Basic metals index increased by 0,1%. From December 2006 to March 2007 the index increased by 2,4% (resulting in a relatively high base). Note that the index increased by a further 7,2% between March 2007 and June 2007, i.e. the base effect will continue to be an important factor in explaining changes in the annual rate in 2008.

P J Lehohla
Statistician General: Statistics South Africa

CONTENTS**Page**

| | |
|--|----|
| KEY FIGURES AS AT APRIL 2008 | 1 |
| Figure 1 – Annual percentage change in the Producer Price Index:..... | 2 |
| NOTES | 6 |
| Table 1 The Producer Price Index (PPI) and the annual percentage change in the PPI on a monthly basis | 10 |
| Table 2 Contributions to the annual percentage change in the PPI for domestic output of South African..... | 11 |
| Table 3 Contributions to the monthly percentage change in the PPI for domestic output of South African..... | 11 |
| Table 4 Contributions to the annual percentage change in the PPI for exported commodities according to group..... | 12 |
| Table 5 Contributions to the monthly percentage change in the PPI for exported commodities according to group..... | 12 |
| Table 6 Contributions to the annual percentage change in the PPI for imported commodities according to group..... | 13 |
| Table 7 Contributions to the monthly percentage change in the PPI for imported commodities according to group..... | 13 |
| Table 8 Producer Price Index for domestic output of South African industry groups..... | 14 |
| Table 9 Producer Price Index for exported commodities according to group..... | 16 |
| Table 10 - Producer Price Index for imported commodities according to group..... | 18 |
| Table 11 - Producer Price Index for materials used in certain industries | 20 |
| ADDITIONAL INFORMATION | 24 |
| EXPLANATORY NOTES..... | 24 |
| GLOSSARY | 27 |
| FOR MORE INFORMATION | 28 |

NOTES**Forthcoming issues****Issue**

May 2008
 June 2008
 July 2008
 August 2008
 September 2008
 October 2008
 November 2008

Expected date of publication

26 June 2008
 31 July 2008
 28 August 2008
 25 September 2008
 30 October 2008
 27 November 2008
 18 December 2008

Purpose of the survey

The surveys of prices of commodities in domestic output (including exports), imported commodities, and exported commodities are monthly surveys covering samples of manufacturers, importers and exporters in the South African economy. The results of the survey are used to compile the Producer Price Index (PPI) which indicates changes in Producer prices of locally produced commodities (including exports), imports and exports. These statistics are used by the private sector for contract price adjustments, and as a deflator in the compilation of national accounts.

Rebasing

The base year of the Producer Price Index (PPI) is still 2000 = 100. For historical rebasing see the statistical release P0142.4.

Special Data Dissemination Standard (SDDS) of the International Monetary Fund (IMF)

South Africa's data dissemination practices are assessed against the IMF's Special Data Dissemination Standard (SDDS). A detailed description of the SDDS can be found on the IMF's Dissemination Standards Bulletin Board on the internet at <http://dsbb.imf.org>. The SDDS prescribes two to four monitorable elements or good practice that can be observed, or monitored, by users of statistics. These include coverage, periodicity and timeliness, and access to a scheduled release calendar. The SDDS is in essence sets standards for the disclosure and transparency of statistics.

South Africa subscribed to the SDDS in 2 August 1996 and posted its metadata as of 27 September 1996. South Africa has met the SDDS specifications for the coverage, periodicity and timeliness of the data, and for the dissemination of advanced release calendars since 18 September 2000.

Stats SA is responsible for compiling and disseminating data on the Producer index, national accounts, government accounts, industry-based statistics, social statistics, the producer price index, consumer price index, labour market and population statistics.

Reports on Observance of Standards and Codes (ROSC) of the International Monetary Fund (IMF)

The IMF has worked on producing ROSC as a step to strengthen the international financial system. The objectives of ROSC include the promotion of increased transparency, and the implementation of internationally accepted standards and codes.

The data dissemination module of the ROSC provides a summary of South Africa's practices on the coverage, periodicity and timeliness of the data categories specified in the IMF's SDDS, and on the practices on the provision of advance release calendars for the data. The ROSC is complemented by an assessment of the quality of the Producer Price Index, using the Data Quality Assessment Framework (DQAF) as developed by the IMF's Statistics Department.

The DQAF assess data quality in terms of -

- ♦ Prerequisites of quality;
- ♦ Integrity;
- ♦ Methodological soundness;
- ♦ Accuracy and reliability;
- ♦ Serviceability; and
- ♦ Accessibility

For South Africa's compliance and performance on the quality of data see <http://www.imf.org/external/np/ros/rosc.asp>.

Methodological notes

Stats SA released a new re-weighted PPI in January 2008 using a revised basket of indicator products.

The new basket of indicator products for locally produced commodities, import and export commodities was compiled through use of several information sources. The information sources used to select relevant indicator products in the different industries are indicated in table A.

Table A – Information sources used to select products in different producer industries

| Main products and industries | Sources |
|-------------------------------------|--|
| Locally produced items | |
| Agriculture | Stats SA, Census of Agriculture, 2005 |
| Fishing | Fishing Industry Handbook, 2005 |
| Forestry | Commercial Timber Resources and Roundwood Processing in South Africa, 2005 |
| Mining and quarrying | Department of Minerals and Energy |
| Manufacturing | Stats SA, Large Sample Survey, 2005 |
| Electricity | Stats SA, Department of Minerals and Energy |
| Gas | Stats SA, Economic Activity Survey, 2005 |
| Water | Department of Water Affairs and Forestry |
| Imported items | South African Revenue Services |
| Exported items | South African Revenue Services |

The products were classified according to the relevant Central Product Classification (CPC) and at industry level were classified using Standard Industrial Classification (SIC) subgroups. At industry level, value added was used to determine industry weights. At product level, the products in each subgroup were sorted according to their value of sales. The products contributing to the top 80% of the sales in each subgroup were selected as indicator products. These are the products for which prices will be monitored periodically by Stats SA.

The questionnaire(s) for each subgroup, which are used to collect the relevant price information from respondents, were adjusted to include the newly selected indicator products. Although the products on each questionnaire differ from the other questionnaires, their layout is identical.

For each indicator product a sample of manufacturers, importers and exporters was drawn from all the manufacturers, importers and exporters who manufacture, import or export the specific indicator product. The list of manufacturers, importers and exporters (sampling frame), from which the samples were drawn, are indicated in table B.

Table B – Sampling frame

| Main products and industries | Sources |
|---|---|
| Locally produced and sold products | |
| Agriculture | List of fresh produce markets |
| Mining and quarrying | List of mines |
| Forestry | List obtained from Department of Water Affairs and Forestry Old sample of PPI |
| Fishing | Old sample of PPI List obtained from other sources |
| Manufacturing | List of manufacturers from Stats SA, Large Sample Survey, 2005 List of manufactures from Stats SA, Business Register List of producers from industry associations |
| Electricity and gas | List of producers according to Stats SA, Economic Activity Survey |
| Water | Old sample of PPI List obtained from Department of Water Affairs and Forestry |
| Imported products | List of importers obtained from South African Revenue Services |
| Exported products | List of exporters obtained from South African Revenue Services |

Table 1 The Producer Price Index (PPI) and the annual percentage change in the PPI on a monthly basis**Base: 2000 = 100****A) Domestic output**

| Year | Jan | Feb | Mar | Apr | May | Jun | Jul | Aug | Sep | Oct | Nov | Dec | Avg | |
|------|-------|-------|-------|-------|-------|-------|-------|-------|-------|-------|-------|-------|-------|-------|
| 2006 | % | +5,1 | +4,7 | +4,7 | +5,0 | +5,9 | +7,2 | +7,9 | +9,9 | +9,8 | +10,6 | +10,9 | +10,5 | +7,6 |
| | Index | 134,8 | 134,9 | 135,6 | 136,9 | 138,7 | 142,6 | 145,1 | 148,3 | 147,2 | 148,3 | 149,5 | 149,1 | 142,5 |
| 2007 | % | +10,8 | +11,3 | +12,5 | +13,1 | +13,2 | +12,6 | +11,6 | +9,6 | +9,3 | +9,4 | +9,0 | +9,5 | +10,9 |
| | Index | 149,3 | 150,2 | 152,5 | 154,9 | 157,0 | 160,5 | 161,9 | 162,5 | 160,9 | 162,3 | 162,9 | 163,3 | 158,1 |
| 2008 | % | +10,4 | +11,3 | +11,9 | +12,4 | .. | .. | .. | .. | .. | .. | .. | .. | .. |
| | Index | 164,9 | 167,2 | 170,6 | 174,1 | .. | .. | .. | .. | .. | .. | .. | .. | .. |

B) Exported commodities

| Year | Jan | Feb | Mar | Apr | May | Jun | Jul | Aug | Sep | Oct | Nov | Dec | Avg | |
|------|-------|-------|-------|-------|-------|-------|-------|-------|-------|-------|-------|-------|-------|-------|
| 2006 | Index | 129,3 | 128,1 | 129,1 | 130,1 | 132,3 | 135,4 | 138,4 | 143,7 | 145,7 | 147,2 | 150,0 | 148,4 | 138,1 |
| | % | +5,0 | +3,5 | +3,4 | +3,3 | +4,7 | +6,1 | +7,0 | +11,1 | +11,4 | +12,8 | +15,1 | +14,4 | +8,1 |
| 2007 | Index | 148,7 | 150,6 | 153,4 | 156,1 | 158,6 | 160,5 | 159,0 | 158,2 | 157,8 | 157,9 | 160,0 | 160,1 | 156,7 |
| | % | +15,0 | +17,6 | +18,8 | +20,0 | +19,9 | +18,5 | +14,9 | +10,1 | +8,3 | +7,3 | +6,7 | +7,9 | +13,7 |
| 2008 | Index | 160,9 | 162,7 | 165,6 | 165,5 | .. | .. | .. | .. | .. | .. | .. | .. | .. |
| | % | +8,2 | +8,0 | +8,0 | +6,0 | .. | .. | .. | .. | .. | .. | .. | .. | .. |

C) Imported commodities

| Year | Jan | Feb | Mar | Apr | May | Jun | Jul | Aug | Sep | Oct | Nov | Dec | Avg | |
|------|-------|-------|-------|-------|-------|-------|-------|-------|-------|-------|-------|-------|-------|-------|
| 2006 | Index | 124,1 | 123,9 | 124,5 | 126,2 | 125,8 | 129,5 | 132,3 | 133,0 | 135,4 | 138,0 | 139,2 | 135,9 | 130,6 |
| | % | +6,4 | +6,9 | +6,7 | +6,1 | +4,7 | +6,8 | +8,2 | +7,8 | +8,2 | +10,4 | +11,3 | +9,1 | +7,7 |
| 2007 | Index | 137,6 | 135,9 | 136,8 | 139,5 | 140,5 | 141,7 | 144,5 | 145,9 | 146,9 | 148,3 | 149,4 | 151,3 | 143,1 |
| | % | +10,9 | +9,7 | +9,9 | +10,5 | +11,7 | +9,4 | +9,2 | +9,7 | +8,5 | +7,5 | +7,3 | +11,3 | +9,6 |
| 2008 | Index | 154,5 | 156,3 | 159,0 | 169,1 | .. | .. | .. | .. | .. | .. | .. | .. | .. |
| | % | +12,3 | +15,0 | +16,2 | +21,2 | .. | .. | .. | .. | .. | .. | .. | .. | .. |

Table 2 Contributions to the annual percentage change in the PPI for domestic output of South African industry groups

| Group | Contribution at Mar 2008 (using new weights ¹) | Contribution at Apr 2008 (using new weights ¹) |
|--|---|---|
| Agriculture | +1,5 | +0,9 |
| Forestry | +0,1 | +0,2 |
| Fishing | +0,1 | 0,0 |
| Mining and quarrying | +4,1 | +4,6 |
| Food at manufacturing | +1,2 | +1,2 |
| Beverages | +0,2 | +0,2 |
| Tobacco products | 0,0 | +0,1 |
| Wood and wood products | +0,2 | +0,2 |
| Paper and paper products | +0,4 | +0,4 |
| Products of petroleum and coal | +2,4 | +2,3 |
| Chemicals and chemical products | +0,5 | +0,7 |
| Rubber and plastic products | +0,3 | +0,3 |
| Non-metallic mineral products | +0,2 | +0,2 |
| Basic metals | -0,1 | -0,2 |
| Metal products | +0,2 | +0,4 |
| Non-electrical machinery and equipment | +0,3 | +0,3 |
| Electrical machinery and apparatus | +0,1 | +0,2 |
| Transport | +0,1 | +0,1 |
| Other manufactures | +0,1 | +0,1 |
| Electricity | +0,2 | +0,5 |
| Gas and water | +0,3 | +0,2 |
| All other groups | -0,5 | -0,5 |
| All groups | +11,9 | +12,4 |

¹ Until the March 2008 PPI release the annual contributions were estimated using the old weights because their impact heavily outweighed the impact of the new weights in the year-on-year change. Note that the PPI will become strictly comparable on a year-on-year basis only from the February 2009 release (to be published in March 2009), and until then the annual contributions will be an approximation.

Using the old weights to determine the annual contributions results in the following percentage contributions for April 2008 (followed by the corresponding contribution for March 2008): Agriculture 0,9 (1,6); Forestry 0,2 (0,1); Mining and quarrying 2,1 (1,9); Food at manufacturing 2,1 (2,2); Beverages 0,2 (0,3); Tobacco products 0,1 (0,1); Textile and made-up goods 0,1 (0,1); Wood and wood products 0,2 (0,2); Paper and paper products 0,6 (0,6); Products of petroleum and coal 1,5 (1,6); Chemicals and chemical products 0,7 (0,6); Rubber and plastic products 0,3 (0,3); Non-metallic mineral products 0,2 (0,2); Basic metals -0,3 (-0,1); Metal products 0,4 (0,2); Non-electrical machinery and equipment 0,4 (0,4); Electrical machinery and apparatus 0,2 (0,1); Transport 0,1 (0,2); Electricity 0,3 (0,2); Gas and water 0,1 (0,1); All other groups 2,0 (1,0).

Table 3 Contributions to the monthly percentage change in the PPI for domestic output of South African industry groups

| Group | Contribution at Mar 2008 | Contribution at Apr 2008 |
|---------------------------------|--------------------------|--------------------------|
| Agriculture | +0,4 | -0,6 |
| Forestry | 0,0 | +0,1 |
| Mining and quarrying | +1,2 | +1,0 |
| Food at manufacturing | +0,1 | +0,1 |
| Beverages | 0,0 | +0,1 |
| Paper and paper products | 0,0 | +0,1 |
| Products of petroleum and coal | +0,3 | +0,4 |
| Chemicals and chemical products | 0,0 | +0,2 |
| Rubber and plastic products | 0,0 | +0,1 |
| Basic metals | 0,0 | +0,1 |
| Metal products | 0,0 | +0,2 |
| Electricity | -0,1 | +0,3 |
| All other groups | +0,1 | 0,0 |
| All groups | +2,0 | +2,1 |

Table 4 Contributions to the annual percentage change in the PPI for exported commodities according to group

| Group | Contribution at Mar 2008 (using new weights ¹) | Contribution at Apr 2008 (using new weights ¹) |
|--|---|---|
| Agriculture | 0,0 | +0,1 |
| Mining and quarrying | +6,3 | +5,9 |
| Food at manufacturing | +0,3 | +0,2 |
| Beverages | +0,1 | +0,1 |
| Wood and wood products | +0,1 | +0,1 |
| Paper and paper products | +0,1 | +0,1 |
| Products of petroleum and coal | +1,0 | +0,9 |
| Chemicals and chemical products | +0,1 | 0,0 |
| Rubber and plastic products | +0,1 | 0,0 |
| Basic metals | -1,6 | -3,5 |
| Metal products | +0,1 | +0,1 |
| Non-electrical machinery and equipment | +0,2 | +0,2 |
| Transport | +0,1 | +0,1 |
| All other groups | +1,1 | +1,7 |
| All groups | +8,0 | +6,0 |

¹ Until the March 2008 PPI release the annual contributions were estimated using the old weights because their impact heavily outweighed the impact of the new weights in the year-on-year change. Note that the PPI will become strictly comparable on a year-on-year basis only from the February 2009 release (to be published in March 2009), and until then the annual contributions will be an approximation.

Using the old weights to determine the annual contributions results in the following percentage contributions for April 2008 (followed by the corresponding contribution for March 2008): Agriculture 0,4 (-0,1); Mining and quarrying 5,1 (5,5); Food at manufacturing 0,6 (0,7); Beverages 0,1 (0,1); Textile and made-up goods 0,1 (0,1); Wood and wood products 0,1 (0,1); Paper and paper products 0,2 (0,2); Products of petroleum and coal 1,2 (1,4); Chemicals and chemical products 0,0 (0,2); Rubber and plastic products 0,0 (0,1); Basic metals -2,4 (-1,1); Metal products 0,1 (0,1); Non-electrical machinery and equipment 0,2 (0,2); Transport 0,1 (0,1); All other groups 0,2 (0,4).

Table 5 Contributions to the monthly percentage change in the PPI for exported commodities according to group

| Group | Contribution at Mar 2008 | Contribution at Apr 2008 |
|-----------------------|--------------------------|--------------------------|
| Mining and quarrying | +1,6 | 0,0 |
| Food at manufacturing | +0,1 | 0,0 |
| Basic metals | 0,0 | -0,1 |
| All other groups | +0,1 | 0,0 |
| All groups | +1,8 | -0,1 |

Table 6 Contributions to the annual percentage change in the PPI for imported commodities according to group

| Group | Contribution at Mar 2008 (using new weights ¹) | Contribution at Apr 2008 (using new weights ¹) |
|---|---|---|
| Agriculture | +0,4 | +0,3 |
| Mining and quarrying | +14,7 | +20,0 |
| Food at manufacturing | +0,9 | +1,0 |
| Paper and paper products | 0,0 | +0,1 |
| Products of petroleum and coal | +0,4 | +0,4 |
| Chemicals and chemical products | +1,6 | +1,5 |
| Non-metallic mineral products | +0,1 | +0,1 |
| Basic metals | +0,2 | +0,1 |
| Metal products | +0,1 | +0,1 |
| Non-electrical machinery and equipment | +0,5 | +0,5 |
| Office, accounting and computing machinery | -0,2 | -0,1 |
| Electrical machinery and apparatus | +0,1 | +0,1 |
| Radio, television and communication equipment and apparatus | 0,0 | -0,1 |
| Medical appliances, precision and optical instruments, watches and clocks | +0,1 | +0,1 |
| Transport | +0,6 | +0,2 |
| All other groups | -3,3 | -3,1 |
| All groups | +16,2 | +21,2 |

¹ Until the March 2008 PPI release the annual contributions were estimated using the old weights because their impact heavily outweighed the impact of the new weights in the year-on-year change. Note that the PPI will become strictly comparable on a year-on-year basis only from the February 2009 release (to be published in March 2009), and until then the annual contributions will be an approximation.

Using the old weights to determine the annual contributions results in the following percentage contributions for April 2008 (followed by the corresponding contribution for March 2008): Agriculture 0,7 (1,0); Mining and quarrying 12,6 (9,3); Food at manufacturing 1,2 (1,1); Paper and paper products 0,1 (0,0); Products of petroleum and coal 0,2 (0,2); Chemicals and chemical products 1,8 (1,9); Non-metallic mineral products 0,1 (0,1); Basic metals 0,1 (0,2); Metal products 0,1 (0,1); Non-electrical machinery and equipment 0,6 (0,6); Office, accounting and computing machinery -0,1 (-0,2); Electrical machinery and apparatus 0,1 (0,1); Radio, television and communication equipment and apparatus -0,1 (0,0); Medical appliances, precision and optical instruments, watches and clocks 0,1 (0,1); Transport 0,2 (0,7); All other groups 3,5 (1,0).

Table 7 Contributions to the monthly percentage change in the PPI for imported commodities according to group

| Group | Contribution at Mar 2008 | Contribution at Apr 2008 |
|---|--------------------------|--------------------------|
| Agriculture | 0,0 | -0,1 |
| Mining and quarrying | +1,5 | +6,1 |
| Food at manufacturing | 0,0 | +0,2 |
| Non-electrical machinery and equipment | +0,1 | +0,1 |
| Radio, television and communication equipment and apparatus | 0,0 | -0,1 |
| All other groups | +0,1 | +0,2 |
| All groups | +1,7 | +6,4 |

Table 8 Producer Price Index for domestic output of South African industry groups
Base: 2000 = 100

| Origin/Group | weight | indices | | | % change between | |
|---|--------|----------|----------|----------|-----------------------|------------------------|
| | | Apr 2007 | Mar 2008 | Apr 2008 | Mar 2008 and Apr 2008 | Apr 2007 and Apr 2008* |
| All groups | 100,00 | 154,9 | 170,6 | 174,1 | +2,1 | +12,4 |
| 1. Agriculture, forestry, fishing and mining | 29,36 | 166,0 | 195,4 | 198,4 | +1,5 | +19,5 |
| 1.1 Agriculture | 8,22 | 167,9 | 197,6 | 184,2 | -6,8 | +9,7 |
| 1.1.1 Food | 3,89 | 163,7 | 195,7 | 173,6 | -11,3 | +6,0 |
| Grain | 0,87 | 207,5 | 261,8 | 250,1 | -4,5 | +20,5 |
| Vegetables | 1,13 | 148,1 | 168,8 | 140,3 | -16,9 | -5,3 |
| Fruits and nuts | 1,43 | 117,9 | 138,3 | 114,9 | -16,9 | -2,5 |
| Oil seeds | 0,13 | 230,3 | 395,1 | 366,0 | -7,4 | +58,9 |
| Sugar cane | 0,30 | 157,7 | 168,8 | 178,8 | +5,9 | +13,4 |
| Other food | 0,04 | 152,2 | 161,7 | 161,7 | 0,0 | +6,2 |
| 1.1.2 Live animals and animal products | 3,68 | 163,6 | 191,1 | 190,8 | -0,2 | +16,6 |
| Live animals | 2,91 | 170,7 | 193,5 | 193,0 | -0,3 | +13,1 |
| Milk | 0,25 | 107,6 | 151,1 | 156,7 | +3,7 | +45,6 |
| Eggs | 0,35 | 165,6 | 214,0 | 214,7 | +0,3 | +29,6 |
| Other raw animal products | 0,17 | . | 205,4 | 194,1 | -5,5 | .. |
| 1.1.3 Other agricultural products | 0,65 | 235,9 | 248,4 | 229,2 | -7,7 | -2,8 |
| 1.2 Forestry | 1,48 | 111,4 | 117,4 | 127,2 | +8,3 | +14,2 |
| 1.3 Fishing | 0,25 | 213,5 | 244,1 | 244,1 | 0,0 | +14,3 |
| 1.4 Mining and quarrying | 19,41 | 175,4 | 203,3 | 212,2 | +4,4 | +21,0 |
| Coal and lignite | 4,97 | 195,1 | 235,6 | 285,6 | +21,2 | +46,4 |
| Crude petroleum and natural gas | 0,62 | . | 94,4 | 94,4 | 0,0 | .. |
| Metal ores | 11,48 | 181,2 | 203,4 | 200,9 | -1,2 | +10,9 |
| Other minerals | 2,34 | 134,2 | 139,5 | 139,4 | -0,1 | +3,9 |
| 2. Manufacturing | 62,30 | 154,6 | 166,2 | 169,5 | +2,0 | +9,6 |
| 2.1 Food at manufacturing | 5,87 | 156,3 | 184,5 | 186,8 | +1,2 | +19,5 |
| Meat and meat products | 0,56 | 178,0 | 194,3 | 195,1 | +0,4 | +9,6 |
| Prepared and preserved fish | 0,18 | 167,6 | 170,0 | 170,3 | +0,2 | +1,6 |
| Fruits and vegetable products | 0,56 | 136,0 | 142,4 | 143,6 | +0,8 | +5,6 |
| Fats and oils | 0,43 | 155,3 | 248,9 | 246,9 | -0,8 | +59,0 |
| Dairy products | 0,98 | 161,8 | 196,2 | 197,7 | +0,8 | +22,2 |
| Grain mill products and bakery products | 0,84 | 137,6 | 175,1 | 180,7 | +3,2 | +31,3 |
| Sugar | 0,44 | 132,2 | 135,9 | 136,2 | +0,2 | +3,0 |
| Coffee and tea | 0,16 | 137,7 | 149,5 | 149,5 | 0,0 | +8,6 |
| Other food products | 1,72 | 161,3 | 186,4 | 190,2 | +2,0 | +17,9 |
| 2.2 Beverages | 3,04 | 166,0 | 172,8 | 175,9 | +1,8 | +6,0 |
| Alcoholic beverages | 1,73 | 174,0 | 182,0 | 185,4 | +1,9 | +6,6 |
| Non-alcoholic beverages | 1,31 | 144,4 | 148,0 | 150,4 | +1,6 | +4,2 |
| 2.3 Tobacco products | 0,59 | 184,5 | 193,9 | 203,2 | +4,8 | +10,1 |
| 2.4 Textile and made-up goods | 1,06 | 127,9 | 133,1 | 132,4 | -0,5 | +3,5 |
| Yarn and thread; woven and tufted textile fabrics (prepared for spinning) | 0,35 | 126,0 | 134,3 | 134,3 | 0,0 | +6,6 |
| Textile articles other than apparel | 0,71 | 131,2 | 133,8 | 132,8 | -0,7 | +1,2 |
| 2.5 Wearing Apparel | 1,48 | 123,2 | 125,4 | 125,4 | 0,0 | +1,8 |
| Knitted or crocheted fabrics | 0,38 | 130,7 | 132,5 | 132,5 | 0,0 | +1,4 |
| Other wearing apparel | 1,09 | 121,3 | 123,7 | 123,7 | 0,0 | +2,0 |
| 2.6 Leather and leather products | 0,32 | 111,0 | 109,5 | 109,5 | 0,0 | -1,4 |
| 2.7 Footwear | 0,27 | 132,6 | 135,2 | 135,2 | 0,0 | +2,0 |
| 2.8 Wood and wood products | 1,40 | 162,8 | 179,1 | 184,5 | +3,0 | +13,3 |
| 2.9 Paper and paper products | 4,96 | 143,9 | 151,8 | 155,1 | +2,2 | +7,8 |
| Pulp, paper and paperboard | 3,20 | 131,8 | 137,6 | 138,2 | +0,4 | +4,9 |
| Printing, publishing and allied industries | 1,77 | 153,0 | 162,5 | 171,0 | +5,2 | +11,8 |
| 2.10 Products of petroleum and coal | 4,98 | 212,8 | 271,1 | 284,3 | +4,9 | +33,6 |

* Annual rate not comparable with annual rates of subcomponents, because the PPI will become strictly comparable on a year-on-year basis only from the February 2009 release.

Table 8 - Producer Price Index for Domestic output of South African industry groups (concluded)
Base: 2000 = 100

| Origin/Group | weight | indices | | | % change between | |
|--|--------|----------|----------|----------|-----------------------|------------------------|
| | | Apr 2007 | Mar 2008 | Apr 2008 | Mar 2008 and Apr 2008 | Apr 2007 and Apr 2008* |
| 2.11 Chemicals and chemical products | 6,74 | 144,1 | 153,3 | 159,2 | +3,8 | +10,5 |
| 2.11.1 Basic Chemicals | 3,81 | 149,7 | 162,7 | 172,0 | +5,7 | +14,9 |
| Basic organic chemicals | 0,73 | . | 244,2 | 244,2 | 0,0 | .. |
| Basic inorganic chemicals | 1,92 | . | 132,0 | 132,2 | +0,2 | .. |
| Fertilisers and pesticides | 0,41 | 172,2 | 213,8 | 298,8 | +39,8 | +73,5 |
| Other basic chemicals | 0,75 | 144,2 | 150,4 | 151,0 | +0,4 | +4,7 |
| 2.11.2 Compound chemical products | 2,93 | 138,9 | 144,5 | 146,4 | +1,3 | +5,4 |
| Paints, vanishers and related products; artists' colours; ink | 1,49 | . | 181,1 | 184,2 | +1,7 | .. |
| Pharmaceutical products | 0,36 | 128,6 | 129,9 | 129,6 | -0,2 | +0,8 |
| Soap, cleaning preparations, perfumes and toilet preparations | 0,63 | . | 140,9 | 143,0 | +1,5 | .. |
| Other compound chemical products | 0,45 | 141,9 | 148,3 | 148,6 | +0,2 | +4,7 |
| 2.12 Rubber and plastic products | 2,59 | 150,4 | 163,0 | 167,6 | +2,8 | +11,4 |
| Rubber products | 1,13 | 183,5 | 191,9 | 197,4 | +2,9 | +7,6 |
| Plastic products | 1,46 | 135,8 | 150,7 | 154,8 | +2,7 | +14,0 |
| 2.13 Non-metallic mineral products | 1,97 | 163,2 | 175,5 | 176,2 | +0,4 | +8,0 |
| Glass and glass products | 0,04 | 139,6 | 143,8 | 143,8 | 0,0 | +3,0 |
| Other non-metallic minerals products n.e.c. | 1,93 | 171,3 | 186,3 | 187,0 | +0,4 | +9,2 |
| 2.14 Basic Metals | 6,66 | 191,2 | 183,3 | 186,2 | +1,6 | -2,6 |
| Basic iron and steel | 4,12 | 184,1 | 201,4 | 206,1 | +2,3 | +12,0 |
| Rolled, drawn and folded products | 2,54 | . | 164,4 | 164,4 | 0,0 | .. |
| 2.15 Metal products | 3,34 | 154,7 | 165,5 | 173,7 | +5,0 | +12,3 |
| Structural metal products and parts thereof | 1,27 | 164,0 | 176,9 | 180,1 | +1,8 | +9,8 |
| Other fabricated metal products | 2,07 | 148,8 | 158,5 | 169,4 | +6,9 | +13,8 |
| 2.16 Non-electrical machinery and equipment | 2,35 | 134,6 | 152,4 | 152,4 | 0,0 | +13,2 |
| General purpose machinery | 1,99 | 126,1 | 145,2 | 145,2 | 0,0 | +15,1 |
| Special purpose machinery | 0,24 | 138,0 | 145,6 | 145,6 | 0,0 | +5,5 |
| Domestic appliances and parts thereof | 0,12 | 131,1 | 132,9 | 132,9 | 0,0 | +1,4 |
| 2.17 Office, accounting and computing machinery | 0,20 | 100,2 | 100,4 | 100,4 | 0,0 | +0,2 |
| 2.18 Electrical machinery and apparatus | 1,93 | 196,0 | 207,3 | 208,5 | +0,6 | +6,4 |
| Electric motors, generators and transformers, and parts thereof | 0,07 | 220,9 | 241,3 | 241,3 | 0,0 | +9,2 |
| Electricity distribution and control apparatus, and parts thereof | 0,87 | 145,5 | 148,2 | 148,4 | +0,1 | +2,0 |
| Insulated wire and cable; optical fibre cables | 0,72 | 272,9 | 289,4 | 292,4 | +1,0 | +7,1 |
| Other electrical machinery and apparatus | 0,26 | 134,4 | 143,5 | 143,7 | +0,1 | +6,9 |
| 2.19 Radio, television and communication equipments and parts thereof | 0,48 | 128,0 | 131,2 | 127,5 | -2,8 | -0,4 |
| 2.20 Medical appliances, precision and optical instruments, watches and clocks | 0,29 | 136,0 | 139,9 | 139,9 | 0,0 | +2,9 |
| 2.21 Transport | 5,83 | 132,1 | 134,9 | 134,0 | -0,7 | +1,4 |
| 2.21.1 Motor vehicles, parts and accessories thereof | 2,12 | 133,0 | 135,9 | 135,9 | 0,0 | +2,2 |
| Motor vehicles | 2,11 | 130,1 | 133,0 | 133,0 | 0,0 | +2,2 |
| Parts and accessories for motor vehicles | 0,01 | 141,3 | 158,6 | 158,6 | 0,0 | +12,2 |
| 2.21.2 Bodies (coachwork) for motor vehicles, trailers and semi-trailers; parts | 0,09 | 116,4 | 120,3 | 120,3 | 0,0 | +3,4 |
| Bodies for motor vehicles | 0,03 | . | 156,9 | 156,9 | 0,0 | .. |
| Trailers, semi-trailer and containers | 0,04 | . | 113,9 | 113,9 | 0,0 | .. |
| Parts for motor vehicles bodies, trailers, semi-trailers and containers | 0,01 | . | 144,5 | 144,5 | 0,0 | .. |
| 2.21.3 Other transport equipment | 3,62 | 106,2 | 107,4 | 106,1 | -1,2 | -0,1 |
| 2.22 Furniture | 1,01 | 130,6 | 132,9 | 134,3 | +1,1 | +2,8 |
| 2.23 Other manufactures | 4,95 | 124,3 | 128,4 | 128,4 | 0,0 | +3,3 |
| 3. Electricity, gas, steam and water | 8,33 | 113,7 | 119,1 | 125,4 | +5,3 | +10,3 |
| Electricity | 6,86 | 108,0 | 111,7 | 119,9 | +7,3 | +11,0 |
| Water and gas | 1,47 | 184,5 | 208,7 | 208,7 | 0,0 | +13,1 |

* Annual rates not comparable with annual rates of subcomponents, because the PPI will become strictly comparable on a year-on-year basis only from the February 2009 release.

Table 9 Producer Price Index for exported commodities according to group
Base: 2000 = 100

| Origin/Group | weight | indices | | | % change between | |
|---|--------|----------|----------|----------|-----------------------|------------------------|
| | | Apr 2007 | Mar 2008 | Apr 2008 | Mar 2008 and Apr 2008 | Apr 2007 and Apr 2008* |
| All groups | 100,00 | 156,1 | 165,6 | 165,5 | -0,1 | +6,0 |
| 1. Agriculture, forestry, fishing and mining | 30,34 | 160,3 | 190,4 | 190,5 | +0,1 | +18,8 |
| 1.1 Agriculture | 1,62 | 142,3 | 150,3 | 153,3 | +2,0 | +7,7 |
| 1.1.1 Food | 1,50 | 139,9 | 148,0 | 151,2 | +2,2 | +8,1 |
| Grain | 0,19 | 225,7 | 246,7 | 238,9 | -3,2 | +5,8 |
| Vegetables | 0,31 | 100,0 | 100,0 | 100,0 | 0,0 | 0,0 |
| Fruits and nuts | 0,95 | 62,2 | 60,8 | 65,5 | +7,7 | +5,3 |
| Oil seeds | 0,03 | . | 100,0 | 100,0 | 0,0 | .. |
| Sugar cane | 0,02 | . | 100,0 | 100,0 | 0,0 | .. |
| 1.1.2 Live animals and animal products | 0,04 | 180,7 | 186,4 | 190,6 | +2,3 | +5,5 |
| Live animals | 0,01 | 78,7 | 100,0 | 100,0 | 0,0 | +27,1 |
| Other raw animal products | 0,03 | . | 195,2 | 202,4 | +3,7 | .. |
| 1.1.3 Other agricultural products | 0,08 | 173,3 | 158,8 | 158,8 | 0,0 | -8,4 |
| 1.2 Forestry | 0,09 | 100,0 | 100,0 | 100,0 | 0,0 | 0,0 |
| 1.3 Fishing | 0,06 | 207,7 | 228,2 | 232,7 | +2,0 | +12,0 |
| 1.4 Mining and quarrying | 28,57 | 163,1 | 195,2 | 195,2 | 0,0 | +19,7 |
| Coal and lignite | 6,22 | 218,8 | 281,1 | 266,4 | -5,2 | +21,8 |
| Metal ores | 19,82 | 148,3 | 177,1 | 181,2 | +2,3 | +22,2 |
| Other minerals | 2,53 | 131,5 | 133,9 | 133,5 | -0,3 | +1,5 |
| 2. Manufacturing | 69,66 | 154,2 | 154,4 | 154,2 | -0,1 | 0,0 |
| 2.1 Food at manufacturing | 2,20 | 129,9 | 147,9 | 147,2 | -0,5 | +13,3 |
| Meat and meat products | 0,09 | 116,4 | 122,0 | 122,0 | 0,0 | +4,8 |
| Prepared and preserved fish | 0,24 | 135,4 | 136,8 | 138,1 | +1,0 | +2,0 |
| Fruits and vegetable products | 0,63 | 122,7 | 128,1 | 128,5 | +0,3 | +4,7 |
| Fats and oils | 0,09 | 147,7 | 199,4 | 199,4 | 0,0 | +35,0 |
| Dairy products | 0,03 | 136,9 | 143,1 | 143,1 | 0,0 | +4,5 |
| Grain mill products and bakery products | 0,07 | 137,4 | 179,7 | 185,8 | +3,4 | +35,2 |
| Sugar | 0,78 | 127,9 | 140,5 | 138,9 | -1,1 | +8,6 |
| Other food products | 0,27 | 143,9 | 163,0 | 163,3 | +0,2 | +13,5 |
| 2.2 Beverages | 1,55 | 120,5 | 128,0 | 128,0 | 0,0 | +6,2 |
| Alcoholic beverages | 1,39 | 121,5 | 128,9 | 128,9 | 0,0 | +6,1 |
| Non-alcoholic beverages | 0,16 | 109,1 | 117,6 | 117,6 | 0,0 | +7,8 |
| 2.3 Tobacco products | 0,19 | 118,4 | 118,4 | 118,4 | 0,0 | 0,0 |
| 2.4 Textile and made-up goods | 0,56 | 167,1 | 175,7 | 175,3 | -0,2 | +4,9 |
| Yarn and thread; woven and tufted textile fabrics (prepared for spinning) | 0,03 | 189,5 | 207,3 | 201,6 | -2,7 | +6,4 |
| Textile articles other than apparel | 0,53 | 115,1 | 118,0 | 118,0 | 0,0 | +2,5 |
| 2.5 Wearing Apparel | 0,19 | 108,5 | 108,5 | 108,5 | 0,0 | 0,0 |
| Knitted or crocheted fabrics | 0,14 | 118,3 | 118,3 | 118,3 | 0,0 | 0,0 |
| Other wearing apparel | 0,06 | 106,0 | 106,0 | 106,0 | 0,0 | 0,0 |
| 2.6 Leather and leather products | 0,29 | 101,9 | 98,3 | 98,3 | 0,0 | -3,5 |
| 2.7 Footwear | 0,04 | 158,4 | 166,7 | 166,7 | 0,0 | +5,2 |
| 2.8 Wood and wood products | 0,83 | 163,0 | 181,5 | 181,9 | +0,2 | +11,6 |
| 2.9 Paper and paper products | 1,80 | 126,0 | 129,8 | 134,2 | +3,4 | +6,5 |
| Pulp, paper and paperboard | 1,52 | 128,3 | 132,3 | 137,7 | +4,1 | +7,3 |
| Printing, publishing and allied industries | 0,28 | 110,9 | 113,4 | 113,4 | 0,0 | +2,3 |
| 2.10 Products of petroleum and coal | 2,37 | 198,5 | 257,3 | 257,3 | 0,0 | +29,6 |

* Annual rates not comparable with annual rates of subcomponents, because the PPI will become strictly comparable on a year-on-year basis only from the February 2009 release.

Table 9 - Producer Price Index for exported commodities according to group (concluded)
Base: 2000 = 100

| | weight | indices | | | % change between | |
|--|--------|----------|----------|----------|-----------------------|------------------------|
| | | Apr 2007 | Mar 2008 | Apr 2008 | Mar 2008 and Apr 2008 | Apr 2007 and Apr 2008* |
| 2.11 Chemicals and chemical products | 5,14 | 130,4 | 130,9 | 131,1 | +0,2 | +0,5 |
| 2.11.1 Basic Chemicals | 3,94 | 136,4 | 136,6 | 136,8 | +0,1 | +0,3 |
| Basic organic chemicals | 0,81 | . | 257,4 | 257,4 | 0,0 | .. |
| Basic inorganic chemicals | 2,10 | . | 130,7 | 130,7 | 0,0 | .. |
| Other basic chemicals | 1,03 | 136,3 | 136,1 | 136,8 | +0,5 | +0,4 |
| 2.11.2 Compound chemical products | 1,21 | 114,9 | 116,5 | 116,8 | +0,3 | +1,7 |
| Paints, vanishers and related products; artists' colours; ink | 0,03 | . | 173,9 | 173,9 | 0,0 | .. |
| Soap, cleaning preparations, perfumes and toilet preparations | 0,76 | . | 137,2 | 137,7 | +0,4 | .. |
| Other compound chemical products | 0,41 | 113,8 | 114,6 | 114,6 | 0,0 | +0,7 |
| 2.12 Rubber and plastic products | 0,90 | 135,2 | 140,6 | 142,8 | +1,6 | +5,6 |
| Rubber products | 0,50 | 166,0 | 176,0 | 176,0 | 0,0 | +6,0 |
| Plastic products | 0,40 | 103,4 | 104,2 | 108,4 | +4,0 | +4,8 |
| 2.13 Non-metallic mineral products | 0,67 | 127,9 | 135,0 | 135,0 | 0,0 | +5,6 |
| Other non-metallic minerals products n.e.c. | 0,67 | 130,2 | 135,0 | 135,0 | 0,0 | +3,7 |
| 2.14 Basic Metals | 33,23 | 199,2 | 183,6 | 182,9 | -0,4 | -8,2 |
| Basic iron and steel | 7,33 | 183,0 | 214,1 | 217,7 | +1,7 | +19,0 |
| Rolled, drawn and folded products | 4,32 | 162,3 | 106,3 | 106,3 | 0,0 | -34,5 |
| Other non-ferrous basic metals and articles | 21,58 | 213,3 | 171,0 | 168,0 | -1,8 | -21,2 |
| 2.15 Metal products | 1,31 | 155,5 | 161,8 | 162,7 | +0,6 | +4,6 |
| Structural metal products and parts thereof | 0,54 | 164,7 | 174,9 | 176,0 | +0,6 | +6,9 |
| Other fabricated metal products | 0,77 | 145,8 | 148,4 | 148,8 | +0,3 | +2,1 |
| 2.16 Non-electrical machinery and equipment | 5,73 | 128,6 | 134,3 | 134,3 | 0,0 | +4,4 |
| General purpose machinery | 2,35 | 121,4 | 124,9 | 124,9 | 0,0 | +2,9 |
| Special purpose machinery | 1,61 | 134,4 | 140,4 | 140,4 | 0,0 | +4,5 |
| Domestic appliances and parts thereof | 1,76 | 125,9 | 132,7 | 132,7 | 0,0 | +5,4 |
| 2.17 Office, accounting and computing machinery | 0,23 | 99,7 | 99,7 | 99,7 | 0,0 | 0,0 |
| 2.18 Electrical machinery and apparatus | 0,83 | 133,0 | 137,9 | 137,9 | 0,0 | +3,7 |
| Electric motors, generators and transformers, and parts thereof | 0,10 | 167,7 | 169,0 | 169,0 | 0,0 | +0,8 |
| Electricity distribution and control apparatus, and parts thereof | 0,15 | 137,1 | 141,4 | 141,4 | 0,0 | +3,1 |
| Insulated wire and cable; optical fibre cables | 0,25 | 154,7 | 173,9 | 173,9 | 0,0 | +12,4 |
| Other electrical machinery and apparatus | 0,34 | 116,0 | 118,5 | 118,5 | 0,0 | +2,2 |
| 2.19 Radio, television and communication equipments and parts thereof | 1,14 | 102,0 | 100,0 | 100,0 | 0,0 | -2,0 |
| 2.20 Medical appliances, precision and optical instruments, watches and clocks | 0,54 | 138,2 | 143,9 | 136,9 | -4,9 | -0,9 |
| 2.21 Transport | 7,33 | 116,6 | 118,5 | 118,5 | 0,0 | +1,6 |
| 2.21.1 Motor vehicles, parts and accessories thereof | 1,63 | 119,8 | 122,9 | 122,9 | 0,0 | +2,6 |
| Motor vehicles | 1,28 | 102,0 | 104,3 | 104,3 | 0,0 | +2,3 |
| Parts and accessories for motor vehicles | 0,35 | 147,1 | 153,0 | 153,0 | 0,0 | +4,0 |
| 2.21.2 Bodies (coachwork) for motor vehicles, trailers and semi-trailers; parts | 1,68 | 101,1 | 130,9 | 130,9 | 0,0 | +29,5 |
| Trailers, semi-trailer and containers | 0,71 | . | 101,0 | 101,0 | 0,0 | .. |
| Parts for motor vehicles bodies, trailers, semi-trailers and containers | 0,97 | . | 150,5 | 150,5 | 0,0 | .. |
| 2.21.3 Other transport equipment | 4,03 | 104,4 | 105,3 | 105,3 | 0,0 | +0,9 |
| 2.22 Furniture | 1,04 | 100,6 | 100,5 | 100,5 | 0,0 | -0,1 |
| 2.23 Other manufactures | 1,53 | 102,3 | 103,1 | 103,1 | 0,0 | +0,8 |

* Annual rates not comparable with annual rates of subcomponents, because the PPI will become strictly comparable on a year-on-year basis only from the February 2009 release.

Table 10 - Producer Price Index for imported commodities according to group
Base: 2000 = 100

| | weight | indices | | | % change between | |
|--|--------|----------|----------|----------|-----------------------|------------------------|
| | | Apr 2007 | Mar 2008 | Apr 2008 | Mar 2008 and Apr 2008 | Apr 2007 and Apr 2008* |
| All groups | 100,00 | 139,5 | 159,0 | 169,1 | +6,4 | +21,2 |
| 1. Agriculture, forestry, fishing and mining | 16,75 | 200,8 | 306,8 | 360,3 | +17,4 | +79,4 |
| 1.1 Agriculture | 0,93 | 125,4 | 185,9 | 166,2 | -10,6 | +32,5 |
| 1.1.1 Food | 0,53 | 132,7 | 209,5 | 178,9 | -14,6 | +34,8 |
| Grain | 0,40 | 131,5 | 222,8 | 181,1 | -18,7 | +37,7 |
| Vegetables | 0,01 | . | 103,1 | 103,1 | 0,0 | .. |
| Fruits and nuts | 0,03 | 148,2 | 156,3 | 155,9 | -0,3 | +5,2 |
| Oil seeds | 0,03 | . | 100,0 | 100,0 | 0,0 | .. |
| Other food | 0,06 | 139,9 | 169,7 | 206,6 | +21,7 | +47,7 |
| 1.1.2 Live animals and animal products | 0,06 | 121,8 | 122,9 | 122,9 | 0,0 | +0,9 |
| Live animals | 0,02 | 104,2 | 105,8 | 105,8 | 0,0 | +1,5 |
| Other raw animal products | 0,04 | . | 175,0 | 175,0 | 0,0 | .. |
| 1.1.3 Other agricultural products | 0,33 | 106,3 | 125,5 | 126,3 | +0,6 | +18,8 |
| 1.2 Forestry | 0,01 | 100,0 | 100,0 | 100,0 | 0,0 | 0,0 |
| 1.3 Fishing | 0,08 | 101,3 | 101,3 | 101,3 | 0,0 | 0,0 |
| 1.4 Mining and quarrying | 15,73 | 218,1 | 333,8 | 395,1 | +18,4 | +81,2 |
| Coal and lignite | 0,02 | 100,8 | 103,2 | 103,2 | 0,0 | +2,4 |
| Crude petroleum and natural gas | 12,84 | . | 375,1 | 449,0 | +19,7 | .. |
| Metal ores | 0,76 | 96,2 | 96,2 | 96,2 | 0,0 | 0,0 |
| Other minerals | 2,11 | 222,1 | 322,3 | 321,5 | -0,2 | +44,8 |
| 2. Manufacturing | 83,25 | 130,1 | 136,5 | 137,5 | +0,7 | +5,7 |
| 2.1 Food at manufacturing | 3,24 | 140,5 | 175,3 | 184,4 | +5,2 | +31,2 |
| Meat and meat products | 0,70 | 175,0 | 178,7 | 176,2 | -1,4 | +0,7 |
| Prepared and preserved fish | 0,07 | 120,0 | 121,1 | 121,1 | 0,0 | +0,9 |
| Fruits and vegetable products | 0,06 | 134,5 | 137,5 | 137,5 | 0,0 | +2,2 |
| Fats and oils | 0,96 | 136,2 | 233,4 | 231,6 | -0,8 | +70,0 |
| Dairy products | 0,13 | 144,7 | 169,6 | 169,6 | 0,0 | +17,2 |
| Grain mill products and bakery products | 0,72 | 143,2 | 153,9 | 198,1 | +28,7 | +38,3 |
| Sugar | 0,05 | 148,5 | 148,5 | 188,0 | +26,6 | +26,6 |
| Coffee and tea | 0,02 | 130,5 | 139,7 | 139,7 | 0,0 | +7,0 |
| Other food products | 0,52 | 118,9 | 130,4 | 131,6 | +0,9 | +10,7 |
| 2.2 Beverages | 0,58 | 148,8 | 150,8 | 152,9 | +1,4 | +2,8 |
| Alcoholic beverages | 0,36 | 150,3 | 152,8 | 156,0 | +2,1 | +3,8 |
| Non-alcoholic beverages | 0,23 | 108,1 | 109,6 | 109,6 | 0,0 | +1,4 |
| 2.3 Tobacco products | 0,05 | 122,3 | 122,5 | 122,5 | 0,0 | +0,2 |
| 2.4 Textile and made-up goods | 1,35 | 114,8 | 117,3 | 117,4 | +0,1 | +2,3 |
| Yarn and thread; woven and tufted textile fabrics (prepared for spinning) | 0,95 | 108,6 | 110,5 | 110,5 | 0,0 | +1,7 |
| Textile articles other than apparel | 0,40 | 125,2 | 128,8 | 129,0 | +0,2 | +3,0 |
| 2.5 Wearing Apparel | 0,76 | 119,8 | 120,4 | 120,4 | 0,0 | +0,5 |
| Knitted or crocheted fabrics | 0,46 | 120,5 | 120,1 | 120,1 | 0,0 | -0,3 |
| Other wearing apparel | 0,30 | 119,5 | 120,4 | 120,4 | 0,0 | +0,8 |
| 2.6 Leather and leather products | 0,41 | 124,1 | 131,6 | 132,2 | +0,5 | +6,5 |
| 2.7 Footwear | 0,67 | 116,6 | 116,5 | 118,0 | +1,3 | +1,2 |
| 2.8 Wood and wood products | 0,63 | 135,1 | 141,4 | 142,7 | +0,9 | +5,6 |
| 2.9 Paper and paper products | 1,87 | 127,2 | 127,6 | 131,1 | +2,7 | +3,1 |
| Pulp, paper and paperboard | 1,32 | 127,9 | 128,7 | 133,3 | +3,6 | +4,2 |
| Printing, publishing and allied industries | 0,55 | 126,6 | 126,6 | 126,7 | +0,1 | +0,1 |
| 2.10 Products of petroleum and coal | 2,20 | 113,1 | 136,1 | 136,4 | +0,2 | +20,6 |

* Annual rates not comparable with annual rates of subcomponents, because the PPI will become strictly comparable on a year-on-year basis only from the February 2009 release.

Table 10 - Producer Price Index for imported commodities according to group (concluded)
Base: 2000 = 100

| Origin/Group | weight | indices | | | % change between | |
|--|--------|----------|----------|----------|-----------------------|------------------------|
| | | Apr 2007 | Mar 2008 | Apr 2008 | Mar 2008 and Apr 2008 | Apr 2007 and Apr 2008* |
| 2.11 Chemicals and chemical products | 10,65 | 143,0 | 162,0 | 162,5 | +0,3 | +13,6 |
| 2.11.1 Basic Chemicals | 6,29 | 157,9 | 182,1 | 183,1 | +0,5 | +16,0 |
| Basic organic chemicals | 3,26 | . | 180,6 | 181,1 | +0,3 | .. |
| Basic inorganic chemicals | 0,88 | . | 121,3 | 121,3 | 0,0 | .. |
| Fertilisers and pesticides | 0,82 | 167,7 | 209,9 | 209,9 | 0,0 | +25,2 |
| Other basic chemicals | 1,33 | 157,3 | 181,1 | 183,6 | +1,4 | +16,7 |
| 2.11.2 Compound chemical products | 4,36 | 128,4 | 142,2 | 142,3 | +0,1 | +10,8 |
| Paints, vanishers and related products; artists' colours; ink | 0,34 | . | 137,0 | 137,0 | 0,0 | .. |
| Pharmaceutical products | 0,89 | 136,2 | 136,3 | 136,3 | 0,0 | +0,1 |
| Soap, cleaning preparations, perfumes and toilet preparations | 0,53 | . | 132,2 | 132,2 | 0,0 | .. |
| Other compound chemical products | 2,60 | 123,3 | 145,7 | 145,8 | +0,1 | +18,2 |
| 2.12 Rubber and plastic products | 2,44 | 119,2 | 120,5 | 120,6 | +0,1 | +1,2 |
| Rubber products | 0,96 | 118,3 | 120,9 | 121,3 | +0,3 | +2,5 |
| Plastic products | 1,48 | 119,8 | 120,1 | 120,1 | 0,0 | +0,3 |
| 2.13 Non-metallic mineral products | 1,57 | 130,0 | 133,7 | 135,0 | +1,0 | +3,8 |
| Glass and glass products | 0,03 | 113,0 | 116,1 | 116,1 | 0,0 | +2,7 |
| Other non-metallic minerals products n.e.c. | 1,54 | 137,4 | 142,3 | 143,7 | +1,0 | +4,6 |
| 2.14 Basic Metals | 3,70 | 186,9 | 187,8 | 189,2 | +0,7 | +1,2 |
| Basic iron and steel | 0,77 | 160,5 | 160,2 | 160,2 | 0,0 | -0,2 |
| Rolled, drawn and folded products | 1,24 | 155,8 | 163,6 | 166,4 | +1,7 | +6,8 |
| Other non-ferrous basic metals and articles | 1,69 | 210,6 | 212,3 | 213,3 | +0,5 | +1,3 |
| 2.15 Metal products | 2,06 | 131,4 | 135,3 | 136,9 | +1,2 | +4,2 |
| Structural metal products and parts thereof | 0,09 | 109,5 | 109,4 | 109,4 | 0,0 | -0,1 |
| Other fabricated metal products | 1,97 | 133,3 | 137,6 | 139,3 | +1,2 | +4,5 |
| 2.16 Non-electrical machinery and equipment | 14,01 | 128,2 | 132,4 | 133,3 | +0,7 | +4,0 |
| General purpose machinery | 7,98 | 136,5 | 142,1 | 143,6 | +1,1 | +5,2 |
| Special purpose machinery | 4,64 | 122,4 | 124,8 | 124,9 | +0,1 | +2,0 |
| Domestic appliances and parts thereof | 1,40 | 128,4 | 137,4 | 137,8 | +0,3 | +7,3 |
| 2.17 Office, accounting and computing machinery | 5,42 | 76,2 | 72,9 | 73,9 | +1,4 | -3,0 |
| 2.18 Electrical machinery and apparatus | 2,95 | 124,1 | 127,7 | 127,9 | +0,2 | +3,1 |
| Electric motors, generators and transformers, and parts thereof | 0,58 | 103,0 | 103,0 | 103,1 | +0,1 | +0,1 |
| Electricity distribution and control apparatus, and parts thereof | 0,75 | 127,0 | 128,9 | 129,3 | +0,3 | +1,8 |
| Insulated wire and cable; optical fibre cables | 0,28 | 186,9 | 197,9 | 198,4 | +0,3 | +6,2 |
| Other electrical machinery and apparatus | 1,34 | 122,8 | 128,8 | 128,8 | 0,0 | +4,9 |
| 2.19 Radio, television and communication equipments and parts thereof | 9,81 | 98,8 | 98,4 | 97,5 | -0,9 | -1,3 |
| 2.20 Medical appliances, precision and optical instruments, watches and clocks | 3,34 | 120,1 | 122,6 | 124,5 | +1,5 | +3,7 |
| Medical and surgical equipment and orthopaedic appliances | 3,16 | 119,7 | 122,5 | 124,2 | +1,4 | +3,8 |
| Watches and clocks, and parts thereof | 0,18 | 122,0 | 123,5 | 128,1 | +3,7 | +5,0 |
| 2.21 Transport | 13,45 | 144,1 | 146,1 | 146,2 | +0,1 | +1,5 |
| 2.21.1 Motor vehicles, parts and accessories thereof | 2,83 | 148,1 | 149,3 | 149,4 | +0,1 | +0,9 |
| Motor vehicles | 2,73 | 103,3 | 103,4 | 103,5 | +0,1 | +0,2 |
| Parts and accessories for motor vehicles | 0,11 | 157,2 | 158,6 | 158,6 | 0,0 | +0,9 |
| 2.21.2 Bodies (coachwork) for motor vehicles, trailers and semi-trailers; parts | 1,63 | 155,8 | 157,2 | 157,5 | +0,2 | +1,1 |
| Trailers, semi-trailer and containers | 0,70 | . | 116,7 | 116,7 | 0,0 | .. |
| Parts for motor vehicles bodies, trailers, semi-trailers and containers | 0,93 | . | 157,3 | 157,7 | +0,3 | .. |
| 2.21.3 Other transport equipment | 8,99 | 112,6 | 111,4 | 111,6 | +0,2 | -0,9 |
| 2.22 Furniture | 0,64 | 106,8 | 107,4 | 107,4 | 0,0 | +0,6 |
| 2.23 Other manufactures | 1,44 | 114,7 | 116,1 | 118,2 | +1,8 | +3,1 |

* Annual rates not comparable with annual rates of subcomponents, because the PPI will become strictly comparable on a year-on-year basis only from the February 2009 release.

Table 11 - Producer Price Index for materials used in certain industries

Base 2000=100

| Industry | indices | | | % change between | |
|---------------------------|----------|----------|----------|-----------------------|-----------------------|
| | Apr 2007 | Mar 2008 | Apr 2008 | Mar 2008 and Apr 2008 | Apr 2007 and Apr 2008 |
| Building and construction | 174,8 | 192,7 | 197,7 | +2,5 | +13,1 |
| Building industries | 178,1 | 192,3 | 196,5 | +2,1 | +10,3 |
| Civil engineering | 172,8 | 187,8 | 191,0 | +1,7 | +10,5 |
| Electrical engineering | 168,8 | 177,0 | 182,7 | +3,2 | +8,2 |
| Mechanical engineering | 163,6 | 171,6 | 175,5 | +2,2 | +7,2 |

Table 12 - Producer Price Index for selected materials

Base : 2000 = 100

| Type of materials | indices | | | % change between | | |
|--|---|----------|----------|-----------------------|-----------------------|-------|
| | Apr 2007 | Mar 2008 | Apr 2008 | Mar 2008 and Apr 2008 | Apr 2007 and Apr 2008 | |
| Aggregated crushed stone | 214,9 | 231,6 | 231,6 | 0,0 | +7,7 | |
| Aluminium | Anodising | 136,0 | 150,4 | 159,2 | +5,8 | +17,0 |
| | Basic forms | 177,4 | 179,0 | 182,4 | +1,8 | +2,8 |
| | Extruded products | 218,8 | 222,4 | 247,6 | +11,3 | +13,1 |
| | Sheeting | 227,7 | 267,5 | 270,0 | +0,9 | +18,5 |
| Aluminium lever furniture | 153,3 | 174,2 | 174,2 | 0,0 | +13,6 | |
| Angles, mild steel | 180,6 | 194,2 | 194,2 | 0,0 | +7,5 | |
| Bead wire | 117,7 | 130,6 | 172,2 | +31,8 | +46,3 | |
| Bearings, ball and roller | 167,2 | 197,0 | 204,1 | +3,6 | +22,0 | |
| Billets, mild steel | 196,0 | 227,1 | 227,1 | 0,0 | +15,8 | |
| Bitumen | 232,2 | 316,4 | 341,6 | +7,9 | +47,1 | |
| Bitumen and Acrylic Emulsion | 144,0 | 169,4 | 179,3 | +5,8 | +24,5 | |
| Boxes, corrugated cardboard | 130,7 | 143,8 | 148,9 | +3,5 | +13,9 | |
| Bricks - Face | 200,9 | 221,8 | 225,7 | +1,7 | +12,3 | |
| Bricks - Stock | 223,9 | 237,7 | 242,9 | +2,1 | +8,4 | |
| Building boards | 137,8 | 148,4 | 149,3 | +0,6 | +8,3 | |
| Ceiling materials | 181,7 | 203,4 | 203,4 | 0,0 | +11,9 | |
| Cement Retail price | 188,4 | 202,3 | 203,8 | +0,7 | +8,1 | |
| Cement building blocks | 226,4 | 234,8 | 234,8 | 0,0 | +3,7 | |
| Ceramic and encaustic wall and floor tiles and mosaics | 111,6 | 109,6 | 109,6 | 0,0 | -1,7 | |
| Civil engineering plant | 148,9 | 161,4 | 161,4 | 0,0 | +8,3 | |
| Coal, bituminous | 171,7 | 229,5 | 278,9 | +21,5 | +62,4 | |
| Coal, bituminous - for local sales | | 247,5 | 292,2 | 316,2 | +8,2 | +27,7 |
| | Anthracite - for local sales Grade A | 100,7 | 100,7 | 100,7 | 0,0 | 0,0 |
| | Anthracite - for local sales Grade SP | 100,9 | 100,9 | 100,9 | 0,0 | 0,0 |
| | Cobbles, grade A | 180,9 | 277,1 | 277,1 | 0,0 | +53,1 |
| | Cobbles, grade B | 145,6 | 228,1 | 222,8 | -2,3 | +53,0 |
| | Large nuts, grade A | 152,4 | 152,3 | 152,3 | 0,0 | 0,0 |
| | Large nuts, grade B | 233,4 | 249,5 | 290,1 | +16,2 | +24,2 |
| | Peas, grade A | 273,6 | 336,5 | 422,9 | +25,6 | +54,5 |
| | Peas, grade B | 276,4 | 336,9 | 396,7 | +17,7 | +43,5 |
| | Small nuts, grade A | 248,3 | 390,4 | 491,4 | +25,8 | +97,9 |
| | Small nuts, grade B | 352,2 | 397,9 | 425,6 | +6,9 | +20,8 |
| | Petrol, 93 octane | 237,2 | 334,1 | 365,4 | +9,3 | +54,0 |
| | Coast | | | | | |
| Coated profiled GMS sheeting (roofing) | 214,9 | 223,1 | 223,1 | 0,0 | +3,8 | |
| Concrete pipes | 145,5 | 151,3 | 151,3 | 0,0 | +3,9 | |
| Concrete roof tiles | 174,9 | 204,1 | 204,1 | 0,0 | +16,6 | |
| Construction machinery (excluding trucks) | 122,4 | 123,0 | 127,0 | +3,2 | +3,7 | |
| Containers, glass | 149,4 | 156,7 | 156,7 | 0,0 | +4,8 | |
| Copper Piping | 288,0 | 360,2 | 373,5 | +3,6 | +29,6 | |
| Copper, basic forms | 308,8 | 379,8 | 406,0 | +6,8 | +31,4 | |
| Coumarone indene resin (imported) | 145,7 | 145,7 | 145,7 | 0,0 | 0,0 | |
| Craft paper | 136,9 | 135,3 | 135,3 | 0,0 | -1,1 | |
| Cylinder lock set | 169,5 | 192,2 | 192,2 | 0,0 | +13,3 | |
| Diesel at wholesale level | Coast | 230,7 | 318,3 | 369,5 | +16,0 | +60,1 |
| | Witwatersrand | 234,1 | 321,4 | 372,6 | +15,9 | +59,2 |
| Diesel oil | Coast and Witwatersrand | 224,2 | 367,6 | 424,9 | +15,5 | +89,5 |
| | Retail Metropolitan and other urban areas | 305,4 | 414,4 | 477,8 | +15,2 | +56,4 |
| | Retail Metropolitan areas | 242,9 | 326,3 | 381,8 | +17,0 | +57,1 |
| Drainage | 124,1 | 125,1 | 127,0 | +1,5 | +2,3 | |
| Drop in ceiling tiles-gypsum | 139,2 | 149,7 | 149,7 | 0,0 | +7,5 | |
| Drop-in ceiling tiles - masonite | 168,0 | 173,9 | 173,9 | 0,0 | +3,5 | |
| Electrical contracting materials | 183,9 | 190,2 | 194,3 | +2,1 | +5,6 | |
| Enamel paints | 172,4 | 177,7 | 187,3 | +5,4 | +8,6 | |
| Extruded aluminium distributor level | 185,0 | 177,8 | 181,3 | +1,9 | -2,0 | |
| Extruded aluminium section | 218,8 | 222,8 | 248,0 | +11,3 | +13,3 | |
| Fibre cement roof sheet | 170,8 | 197,8 | 197,8 | 0,0 | +15,8 | |
| Fibrous insulation | Batten board | 164,5 | 176,0 | 176,0 | 0,0 | +6,9 |
| | Ceiling insulation | 134,7 | 141,7 | 141,7 | 0,0 | +5,1 |
| | Mattresses | 166,2 | 182,0 | 182,0 | 0,0 | +9,5 |
| | Preformed pipe sections | 149,3 | 162,8 | 162,8 | 0,0 | +9,0 |

| Type of materials | indices | | | % change between | | | |
|--|----------|-------------------------------------|----------|-----------------------|-----------------------|-------|-------|
| | Apr 2007 | Mar 2008 | Apr 2008 | Mar 2008 and Apr 2008 | Apr 2007 and Apr 2008 | | |
| Flush doors | 195,2 | 260,6 | 260,6 | 0,0 | +33,5 | | |
| Foam insulation materials | 211,3 | 205,6 | 200,6 | -2,4 | -5,0 | | |
| | | Polyurethane | 211,3 | 205,6 | 200,6 | -2,4 | -5,0 |
| Glass for the building industry cut to size | 200,9 | 214,5 | 237,3 | +10,6 | +18,1 | | |
| Glass, for building industry | 100,3 | 103,9 | 108,9 | +4,8 | +8,5 | | |
| Gypsum board | 158,4 | 170,3 | 170,3 | 0,0 | +7,5 | | |
| Hinges | 150,9 | 155,4 | 155,4 | 0,0 | +2,9 | | |
| Imported Meranti | 101,3 | 116,5 | 122,2 | +4,8 | +20,6 | | |
| Insulator, porcelain | 145,8 | 159,3 | 172,0 | +7,9 | +17,9 | | |
| Ironmongery | 134,6 | 145,0 | 147,5 | +1,7 | +9,5 | | |
| Joint Sealants | 132,9 | 152,1 | 164,3 | +8,0 | +23,6 | | |
| Leather, bovine hide | 128,8 | 135,8 | 142,9 | +5,2 | +10,9 | | |
| Lever locks | 162,7 | 176,9 | 176,9 | 0,0 | +8,7 | | |
| Mining machinery | 136,0 | 140,0 | 140,0 | 0,0 | +2,9 | | |
| Modified Bitumen sheeting | 146,1 | 172,3 | 180,6 | +4,8 | +23,6 | | |
| Natural stone, cut and sawn | 116,8 | 127,7 | 127,7 | 0,0 | +9,3 | | |
| Ordinary and extended cement | 217,4 | 239,0 | 239,3 | +0,1 | +10,0 | | |
| PVC Pipes | 147,7 | 147,7 | 147,7 | 0,0 | 0,0 | | |
| Paints | 165,6 | 176,4 | 185,7 | +5,2 | +12,1 | | |
| Paper, newsprint | 165,4 | 165,4 | 165,4 | 0,0 | 0,0 | | |
| Partitioning materials | 181,7 | 203,4 | 203,4 | 0,0 | +11,9 | | |
| Petro-chemical building materials | 160,5 | 180,1 | 184,6 | +2,4 | +15,0 | | |
| Plastic bottles | 161,5 | 169,2 | 194,8 | +15,1 | +20,6 | | |
| Plastic, bulk forms | 163,8 | 180,3 | 191,3 | +6,1 | +16,7 | | |
| Plate, mild steel | 214,9 | 223,1 | 223,1 | 0,0 | +3,8 | | |
| Plumbing | 141,8 | 151,1 | 153,7 | +1,7 | +8,3 | | |
| Polybutadiene | 210,7 | 210,7 | 243,0 | +15,3 | +15,3 | | |
| Processing oil | 116,5 | 169,2 | 169,2 | 0,0 | +45,2 | | |
| Profiled aluminium roofing | 190,3 | 196,3 | 208,8 | +6,3 | +9,7 | | |
| Profiled aluminium roofing - distributor level | 174,5 | 150,1 | 171,6 | +14,3 | -1,6 | | |
| Reinforcing steel | 215,3 | 291,0 | 350,1 | +20,3 | +62,6 | | |
| Resilient floor coverings | 168,8 | 183,2 | 189,3 | +3,3 | +12,1 | | |
| Rubber crude | 136,1 | 136,1 | 142,5 | +4,7 | +4,7 | | |
| | | Rubber crude Synthetic | 171,9 | 171,9 | 186,1 | +8,2 | +8,2 |
| | | Rubber crude Synthetic Local | 171,9 | 171,9 | 186,1 | +8,2 | +8,2 |
| Rubber industry's indices | | Carbon black - N660 | 169,3 | 217,9 | 217,9 | 0,0 | +28,7 |
| | | Carbon black - N774 | 154,6 | 197,5 | 197,5 | 0,0 | +27,7 |
| | | Natural rubber imported | 220,2 | 263,1 | 268,8 | +2,1 | +22,0 |
| SA Pine, kiln dried | 224,5 | 237,8 | 240,8 | +1,2 | +7,2 | | |
| Sand | 140,6 | 146,5 | 145,0 | -1,0 | +3,1 | | |
| Self-Adhesive sheeting | 138,6 | 146,9 | 149,5 | +1,7 | +7,8 | | |
| Sementitious paints | 184,6 | 186,8 | 190,4 | +1,9 | +3,1 | | |
| Sheet, galvanized | 214,9 | 223,1 | 223,1 | 0,0 | +3,8 | | |
| Sheet, uncoated | 226,8 | 231,2 | 231,2 | 0,0 | +1,9 | | |
| Small steel sections | 116,0 | 113,4 | 113,4 | 0,0 | -2,2 | | |
| Stainless steel products, flat rolled | 254,5 | 200,4 | 214,9 | +7,2 | -15,5 | | |
| Steel tubes, pipes and fittings | 130,5 | 120,3 | 120,3 | 0,0 | -7,8 | | |
| Structural steel products | 199,2 | 224,3 | 224,3 | 0,0 | +12,6 | | |
| Structural steel, unworked | 222,3 | 235,8 | 235,8 | 0,0 | +6,0 | | |
| Sulphuric acid | 111,2 | 190,6 | 190,6 | 0,0 | +71,4 | | |
| Synthetic rubber | | 1502 | 210,0 | 210,0 | 238,1 | +13,3 | +13,3 |
| | | 1712 | 200,2 | 200,2 | 222,2 | +10,9 | +10,9 |
| Tar | 182,4 | 216,2 | 246,1 | +13,8 | +34,9 | | |
| Tile adhesives | 165,9 | 189,7 | 190,4 | +0,3 | +14,7 | | |
| Tinplate | 147,2 | 162,0 | 162,0 | 0,0 | +10,0 | | |
| Transformer oil | 223,6 | 244,3 | 244,7 | +0,1 | +9,4 | | |
| Trucks | 136,5 | 141,4 | 141,4 | 0,0 | +3,5 | | |
| Trucks and buses | 133,3 | 137,4 | 137,4 | 0,0 | +3,0 | | |
| Tyres and tubes | 183,7 | 192,1 | 198,8 | +3,4 | +8,2 | | |
| Vinyl sheeting flooring | 149,5 | 164,8 | 164,8 | 0,0 | +10,2 | | |
| Vinyl tiles flooring | 163,9 | 170,4 | 173,9 | +2,0 | +6,1 | | |
| Wash and basin | 145,2 | 137,0 | 137,0 | 0,0 | -5,6 | | |
| Water-closet system (WC's) | 130,5 | 137,2 | 137,2 | 0,0 | +5,1 | | |
| Waterproofing | 162,3 | 171,1 | 181,0 | +5,7 | +11,5 | | |
| White glazed ceramic tiles | 148,0 | 192,2 | 192,2 | 0,0 | +29,8 | | |

| Type of materials | | indices | | | % change between | |
|------------------------------------|-------------------|----------|----------|----------|-----------------------|-----------------------|
| | | Apr 2007 | Mar 2008 | Apr 2008 | Mar 2008 and Apr 2008 | Apr 2007 and Apr 2008 |
| Witwatersrand | Petrol, 93 octane | 237,2 | 334,1 | 365,4 | +9,3 | +54,0 |
| Wood products, excluding mine wood | | 160,8 | 172,2 | 178,5 | +3,6 | +11,0 |
| Wool, auction prices, 18 types | | 200,0 | 259,5 | 240,6 | -7,2 | +20,3 |
| Woven needle punch carpeting | | 169,3 | 168,6 | 168,6 | 0,0 | -0,4 |

ADDITIONAL INFORMATION

EXPLANATORY NOTES

- Introduction** 1 This publication contains results of monthly surveys of prices of locally produced commodities (including exports), imported and exported commodities. The price indices are calculated at base 2000=100.
- Scope of the PPI survey** 2 The indices are compiled on a gross industry basis, i.e. each index relates to those articles, which are produced, imported and exported by the designated industries of the South African economy. Selling prices are collected from manufacturers, importers and exporters.
- Classification** 3 The 1993 edition of the Standard Industrial Classification of all Economic Activities (SIC), Fifth edition, Report No. 09-90-02 was used to classify the industries in the survey. The SIC is based on the 1990 International Standard Industrial Classification of all Economic Activities (ISIC) with suitable adaptations for local conditions. The Central Product Classification (CPC) Version 1.1, Series M No 77 was used to classify the products in the survey.
- 4 This publication presents information, which measures changes in prices of products, which are produced, imported or exported by establishments.
- Statistical unit** 5 The statistical unit is the establishment (branch), which is the smallest economic unit that functions as a separate entity. Each statistical unit is classified to an industry according to the classification of the products that the unit manufactures, imports or exports.
- Survey methodology and design** 6 Different phases of sampling take place. Firstly, a sample of products, based on the information collected through the Large Sample Survey of 2005 and 2005 information on imports and exports received from SARS is designed and drawn. An indicator product is selected purposively within each product group. To be selected, a product should be part of the top 80% of products manufactured, imported or exported in that product group. Furthermore, it must be possible to obtain price quotations for the relevant product during the whole year. The sample of indicator products is revised every five years at which stage the weights of the indicator products/groups are also revised.
- This survey is collected by mail from an original sample of approximately 2 325 manufacturers, 2 325 exporters and 2 325 importers. The indices are based on producer prices at the point of Producer in the case of commodities produced in South Africa, and "ex-warehouse", in the case of imported commodities. Prices "delivered" or "free on rail" are accepted if this is the normal basis of quotation.
- Currently, an average of 13 000 price quotations are collected each month from approximately 2 700 outlets by means of 1 500 distinct questionnaires.
- Pricing basis** 7 Price information refers to the first seven days of the relevant month, except in the case of mining and most of the agricultural products, where it refers to the average price for the month. The average price of imported crude petroleum, used in the compilation of the import component of the PPI, is calculated as the value (in Rands) divided by the quantity of imported crude petroleum for the relevant month. **The prices of all items exclude Value Added Tax (VAT).**

Weighting basis

- 8 The index is a fixed weight index as the weights are determined in the base period and they do not change until the next base period. The commodities directly represented in the index, were selected on the basis of the values of sales of products –
- produced during 2005 for locally produced commodities;
 - exported during 2005; and
 - imported during 2005.

These commodities constitute approximately 80 per cent of the total value of Producer/imports/exports during the relevant year as indicated above. Weights were allocated to each product in accordance with the value of sales for each item during the 2004/05 financial year. The basis on which the weighting structure of each main PPI component, indicated in the tables published in this statistical release, was calculated, is indicated in table C.

Table C– Basis on which the weighting structure of each PPI table is based

| Number of table in this statistical release | PPI component | Basis for weighting structure |
|--|--|--|
| Table 8 | Domestic output of South African industry groups | Sales value of South African Producer (Weighted using the National Accounts value added weights) |
| Table 9 | Exported commodities | Sales value of exported commodities |
| Table 10 | Imported commodities | Sales value of imported commodities |
| Table 11 | Materials used in certain industries | Value of materials used |

Processing of price information

- 9 The prices that are quoted for the different products are checked. If the price difference between two successive periods is outside the specified range of increase (+5%) or decreases (-5%), the current price levels are confirmed with relevant respondents.

Calculating product price indices

- 10 Price relatives are calculated for each product per respondent by dividing the current prices by the previously quoted price. The price relative for each product is calculated by means of the geometric mean of the price relatives for each respondent. This price relative for each product is then applied to the product index for the previous month in order to obtain a product index for the relevant month.

Calculating group price indices

- 11 Group price indices are calculated by weighting product indices with the relevant product weight, according to each group's (local, import, export) weighting structure, using the Laspeyres index formula.

Contributions of specific products to the total PPI

- 12 The monthly (annual) contribution of a specific product or group of products to the total PPI is calculated by multiplying the weight of this product or group of products with the monthly (annual) change in the index for this product or group of products, divided by the index for 'All groups'.

- Price indices for diesel** 13 The price index for diesel (Coast and Witwatersrand) is based on the refinery prices of diesel.
- The retail price index for diesel (metropolitan and other urban areas) is based on retail prices obtained from a sample of 84 retail outlets throughout the country. The diesel indices for the different areas are weighted according to the diesel volume distribution as obtained from the South African Petroleum Industry Association (SAPIA).
- The retail price index for diesel (metropolitan areas) is based on retail prices obtained from a sample of only 48 outlets in the historical metropolitan areas of the CPI. The diesel indices for the different areas are weighted according to the diesel volume distribution in the relevant areas as obtained from the South African Petroleum Industry Association (SAPIA).
- The price index for diesel at wholesale level (coast and Witwatersrand) is based on the regulated wholesale prices of diesel.
- Reliability of estimates** 14 Inaccuracies may occur because of imperfections in reporting by establishment (branch) and errors made in collection and processing of the data. Inaccuracies of this kind are referred to as non-sampling errors. Every effort is made to reduce non-sampling errors to a minimum by careful designing the questionnaires, editing data and efficient operating procedures.
- Related publications** 15 Users may also wish to refer to the following publications, which are available from Stats SA -
- Bulletin of Statistics; and
 - SA Statistics.
- Unpublished statistics** 16 In some cases, Stats SA can also make available information, which is not published. This information can be made available in one or more of the following ways: computer printout, diskette or CD. Generally a fee is levied for providing unpublished information.
- Symbols and abbreviations** 17
- | | |
|----------|------------------------------------|
| Stats SA | Statistics South Africa |
| .. | not available |
| - | nil or not applicable |
| * | revised since previous publication |
| avg | average |

GLOSSARY

Annual percentage change

The annual percentage change is the change in the index of the relevant month of the current year compared with the index of the same month in the previous year expressed as a percentage and is generally accepted as the yardstick of PPI inflation.

Overall average annual percentage change

The overall average annual percentage change is the change in the average index of one year compared with the average index of the previous year expressed as a percentage.

Contribution of specific products to the total PPI

The monthly (annual) contribution of a specific product or group of products to the total PPI is calculated by multiplying the weight of the index with the monthly annual change of the index divided by the index for "All Items".

Establishment

An establishment (branch) is the smallest economic unit that functions as a separate entity.

Indicator products

Indicator products are those products whose sale values represent 80% of the total value of sales (turnover) in an industrial subgroup.

**Monthly percentage change
Weights**

The monthly percentage change is the change in the index of the relevant month compared to the index of the previous month expressed as a percentage.

The weights are the relevant importance of the indicator products in that subgroup. The weight of a product is calculated by dividing the actual value of sales of the relevant indicator product by the total value of sales in that subgroup.

FOR MORE INFORMATION

Stats SA publishes approximately 300 different releases each year. It is not economically viable to produce them in more than one of South Africa's eleven official languages. Since the releases are used extensively, not only locally but also by international economic and social-scientific communities, Stats SA releases are published in English only.

Stats SA has copyright on this publication. Users may apply the information as they wish, provided that they acknowledge Stats SA as the source of the basic data wherever they process, apply, utilise, publish or distribute the data; and also that they specify that the relevant application and analysis (where applicable) result from their own processing of data.

Advance release calendar

An advance release calendar is disseminated on www.statssa.gov.za

Stats SA products

A complete set of Stats SA publications is available at the Stats SA Library and the following libraries -

National Library of South Africa, Pretoria Division
National Library of South Africa, Cape Town Division
Natal Society Library, Pietermaritzburg
Library of Parliament, Cape Town
Bloemfontein Public Library
Johannesburg Public Library
Eastern Cape Library Services, King William's Town
Central Regional Library, Polokwane
Central Reference Library, Nelspruit
Central Reference Collection, Kimberley
Central Reference Library, Mmabatho

Stats SA also provides a subscription service.

Electronic services

A large range of data are available via on-line services, diskette and computer printouts. For more details about our electronic data services, contact (012) 310 8600/8390/8351/4892/8496/8095.

You can visit us on the Internet at: www.statssa.gov.za

Enquiries

Technical enquiries: Hlabi Morudu
(012) 310 8377

For media enquiries contact:
Mr T Oosterwyk, Manager, at (012) 310-8130 or 082-908-9104

Telephone number: (012) 310 6917/8137/8377 (survey area)
(012) 310 8600/8390/8351/4892/8496/8095 (user information services)
(012) 310 8161 (orders)
(012) 310 8490 (library)

Fax number: (012) 321 3220/6

email: ppi@statssa.gov.za (technical enquiries)
info@statssa.gov.za (user information services)
distribution@statssa.gov.za (orders)

Postal address: Private Bag X 44, Pretoria, 0001

Produced by Stats SA