

Production Price Index (PPI)

April 2003

Co-operation between Statistics South Africa (Stats SA), the citizens of the country, the private sector and government institutions is essential for a successful statistical system. Without continued co-operation and goodwill, the timely release of relevant and reliable official statistics will not be possible.

Stats SA publishes approximately three hundred different releases each year. It is not economically viable to produce them in more than one of South Africa's eleven official languages. Since the releases are used extensively, not only locally, but also by international economic and social-scientific communities, Stats SA releases are published in English only.

This data in this statistical release adheres to the Special Data Dissemination Standard (SDDS) of the International Monetary Fund (IMF), which sets out standards on coverage, periodicity and timeliness of data; access by the public; integrity; and quality of the disseminated data.

Embargo: 11:30
Date: 28 May 2003

FIGURES AS AT APRIL 2003

Production Price Index and rates of change according to main components

Base: 2000 = 100

Production Price Index components	Indices			Percentage change between		
	Apr 2002	Mar 2003	Apr 2003	Mar 2003 and Apr 2003		Apr 2002 and Apr 2003
				Actual %	Seasonally adjusted %	Actual %
Commodities for consumption in South Africa	122,4	126,5	126,4	- 0,1	- 0,6	+ 3,3
Locally produced commodities	120,4	126,3	126,6	+ 0,2	- 0,4	+ 5,1
Imported commodities	127,4	126,5	125,6	- 0,7	- 0,7	- 1,4
Output of South African industry						
Total output	120,7	124,9	124,7	- 0,2	- 0,7	+ 3,3
For South African consumption	120,4	126,3	126,6	+ 0,2	- 0,4	+ 5,1

FINDINGS AS AT APRIL 2003

The annual percentage change in the PPI is lower at 3,3% at April 2003 (i.e. the PPI at April 2003 compared with that at April 2002), which is the lowest since June 1998 when it was 2,8%.

The Production Price Index (PPI) for all commodities for South African consumption shows an annual rate of increase of 3,3% at April 2003 (i.e. the PPI at April 2003 compared with that at April 2002). This rate is 1,8 percentage points lower than the corresponding annual rate of 5,1% at March 2003 (i.e. the PPI at March 2003 compared with that at March 2002) (table 1, p. 8). This lower annual rate at April 2003 compared with that at March 2003 could be explained by decreases in the production price indices for the following:

Rubber and plastic products, of which the rate decreased from + 12,6% at March 2003 to + 6,0% at April 2003.

Products of petroleum and coal, of which the rate decreased from + 11,9% at March 2003 to + 4,9% at April 2003.

Food at manufacturing, of which the rate decreased from + 10,4% at March 2003 to + 6,9% at April 2003.

Paper, paper products and printing, of which the rate decreased from + 10,2% at March 2003 to + 6,1% at April 2003.

Chemicals and chemical products, of which the rate decreased from + 6,9% at March 2003 to + 5,2% at April 2003.

Other manufactures, of which the rate decreased from + 3,6% at March 2003 to + 3,4% at April 2003.

Mining and quarrying products, of which the rate decreased from + 3,5% at March 2003 to - 1,2% at April 2003.

Basic metals, of which the rate decreased from + 1,8% at March 2003 to - 1,0% at April 2003.

Agricultural products, of which the rate decreased from - 2,6% at March 2003 to - 4,5% at April 2003.

However, these lower annual rates of increase were partially counteracted by a higher annual rate of increase reflected in the inflation rate of the production price index at April 2003 (i.e. the specific index at April 2003 compared with that at April 2002) in the inflation rate of the production price index for:

Electricity, of which the rate increased from - 18,1% at March 2003 to - 16,7% at April 2003.

At March 2003 to April 2003 this index decreased by 0,1% and the seasonally adjusted index decreased by 0,6%.

The annual increase of 3,3% in the PPI for all commodities for South African consumption is due to annual increases in the price indices for locally produced commodities (+ 3,7 percentage points) and imported commodities (- 0,4 of a percentage point). For locally produced commodities and imported commodities contributed less to the annual increase of 3,3% in the PPI for commodities for South African consumption at April 2003 (+ 3,7 percentage points and - 0,4 of a percentage point respectively) at March 2003 (+ 4,9 percentage points and + 0,2 of a percentage point respectively) (cf. table 2, p. 8).

Annual percentage change in the PPI for locally produced commodities for consumption in South Africa is lower at 5,1% at April 2003 (i.e. the PPI at April 2003 compared with that at April 2002), which is the lowest since April 1999 when it was 1,4%.

Annual rate of increase in the PPI for locally produced commodities for consumption in South Africa is 5,1% at April 2003 (i.e. the PPI at April 2003 compared with that at April 2002), which is 1,8 percentage points lower than the corresponding annual rate of 6,9% at March 2003 (i.e. the PPI at March 2003 compared with that at March 2002) (cf. table 8). From March 2003 to April 2003 this index increased by 0,2%, while the seasonally adjusted index decreased

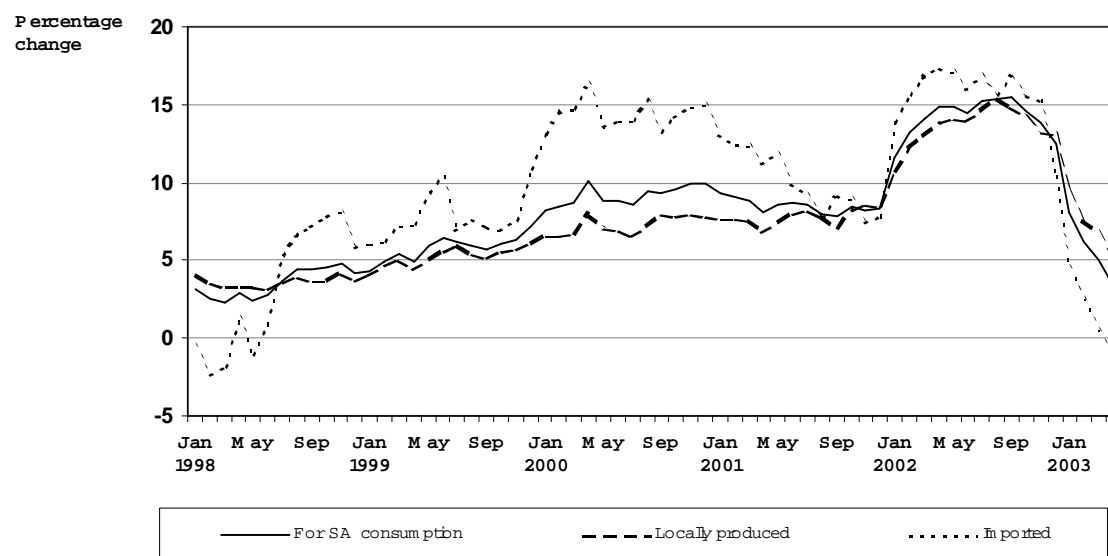
Annual increase of 5,1% in the PPI for locally produced commodities for consumption in South Africa is mainly due to annual increases in the price indices for food at manufacturing (+ 1,2 percentage points), transport equipment (+ 1,0 percentage point), paper products and printing (+ 0,8 of a percentage point), chemicals and chemical products (+ 0,6 of a percentage point), electrical appliances (+ 0,4 of a percentage point), metal products (+ 0,4 of a percentage point), non-metallic mineral products (+ 0,3 of a percentage point) and textiles and made-up goods (+ 0,3 of a percentage point). These annual increases were partially counteracted by annual decreases in the price indices for electricity (- 0,9 of a percentage point), agricultural products (- 0,4 of a percentage point) and mining and quarrying products (- 0,1 of a percentage point) (cf. table 6, p. 10).

Annual rate of change in the PPI for imported commodities is lower at - 1,4% at April 2003 (i.e. the PPI at April 2003 compared with that at April 2002), which is the lowest since March 1998 when it was - 1,9%.

PPI for imported commodities shows an annual rate of increase of - 1,4% at April 2003 (i.e. the PPI at April 2003 compared with that at April 2002). This rate is 1,9 percentage points lower than the corresponding annual rate of 0,5% at March 2003 (i.e. the PPI at March 2003 compared with that at March 2002) (cf. table 1, p. 8). From March 2003 to April 2003 this index as well as the seasonally adjusted index decreased by 0,7%.

Annual decrease of - 1,4% in the PPI for imported commodities is mainly due to annual decreases in the price indices for accounting and computing machinery (- 0,5 of a percentage point), agricultural products (- 0,3 of a percentage point), furniture and manufacturing (- 0,3 of a percentage point), basic metals (- 0,3 of a percentage point), medical, precision and optical instruments (- 0,2 of a percentage point), paper, paper products and printing (- 0,1 of a percentage point) and radio, television, communication and apparatus (- 0,1 of a percentage point) (cf. table 8, p. 11).

Figure 1 – Annual percentage change in the Production Price Index: Commodities for South African consumption



Source: Stats SA

Contributions to monthly changes

For all commodities for South African consumption

A monthly decrease of 0,1% in the PPI for all commodities for South African consumption is due to a monthly decrease in the price index for imported commodities (- 0,3 of a percentage point), which was partially counteracted by a monthly increase in the price index for locally produced commodities (+ 0,2 of a percentage point) (cf. table 3, p. 8).

For locally produced commodities for consumption in South Africa

A monthly increase of 0,2% in the PPI for locally produced commodities for consumption in South Africa is due to monthly increases in the price indices for beverages (+ 0,2 of a percentage point), mining and quarrying products (+ 0,1 of a percentage point), tobacco products (+ 0,1 of a percentage point), paper, paper products and printing (+ 0,1 of a percentage point), chemical products (+ 0,1 of a percentage point) and electricity (+ 0,1 of a percentage point). These monthly increases were partially counteracted by monthly decreases in the price indices for agricultural products (- 0,3 of a percentage point), rubber and plastic products (- 0,1 of a percentage point) and basic metals (- 0,1 of a percentage point) (cf. table 7, p. 10).

For imported commodities

A monthly decrease of 0,7% in the PPI for imported commodities is due to the monthly decreases in the price indices for basic metals (- 0,2 of a percentage point), agricultural products (- 0,1 of a percentage point), mining and quarrying products (- 0,1 of a percentage point), food at manufacturing (- 0,1 of a percentage point), paper, paper products and printing (- 0,1 of a percentage point), chemicals and chemical products (- 0,1 of a percentage point) and non-electrical machinery and equipment (- 0,1 of a percentage point), while a monthly increase occurred in the price index for transport equipment (+ 0,1 of a percentage point) (cf. table 9, p. 11).

Monthly changes in the PPI for all commodities for South African consumption

Relatively large monthly decreases occurred in the price indices for agricultural products (- 3,6%), rubber and plastic products (- 2,7%), leather and leather products (- 1,7%), gas, steam and water (- 0,8%), medical, precision and optical instruments (- 0,6%), food at manufacturing (- 0,3%) and office, accounting and computing machinery (- 0,3%), while relatively large monthly increases occurred in the price indices for tobacco products (+ 5,8%), beverages (+ 5,7%), wood and wood products (+ 1,9%), electricity (+ 1,9%), chemicals and chemical products (+ 0,8%), mining and quarrying products (+0,7%), paper, paper products and printing (+ 0,5%) and products of petroleum and coal (+ 0,5%) (cf. table 10, p. 12 and 13).

Monthly changes in the PPI for imported commodities

Relatively large monthly decreases occurred in the price indices for basic metals (- 5,7%), agricultural products (- 5,5%), food at manufacturing (- 2,2%), paper, paper products and printing (- 1,9%), rubber and plastic products (- 1,9%), wearing apparel (- 1,2%), mining and quarrying products (- 1,2%), metal products (- 1,0%), textiles and made-up goods (- 0,9%) and medical, precision and optical instruments (- 0,9%). These monthly decreases were partially counteracted by monthly increases in the price indices for beverages (+ 1,6%), transport equipment (+ 0,5%) and footwear (+ 0,4%) (cf. table 13, p. 18 and 19).

Monthly changes in the PPI for exported commodities

From March 2003 to April 2003, the PPI for exported commodities decreased by 1,2%. Relatively large monthly decreases occurred in the price indices for exported products of petroleum and coal (- 15,8%), beverages (- 7,4%), leather and leather products (- 7,4%), footwear (- 3,3%), medical, precision and optical instruments (- 2,2%), paper, paper products and printing (- 1,9%), mining and quarrying products (- 1,9%), rubber and plastic products (- 1,7%) and fishing products (- 1,0%), while relatively large monthly increases occurred in the price indices for exported chemicals and chemical products (+ 0,7%), non-metallic mineral products (+ 0,5%), wood and wood products (+ 0,4%), basic metals (+ 0,3%) and tobacco products (+ 0,2%) (cf. table 14 and 21).

Scope of services in the PPI

It should be noted that services are not included in the basket of items (indicator products and weights) from which the PPI is calculated, nor included in the pricing surveys for PPI, while services are included in the CPI basket of items and the pricing surveys for the CPI. Therefore, the effect of lower inflation on services included in the CPI will not influence the PPI.

PP
P J Lehohla
Statistician General: Statistics South Africa

TENTS	Page
5	5
es	
: 1 Production Price Index (PPI) and the annual percentage change in the PPI on a monthly basis	8
: 2 Contributions to the annual percentage change in the PPI for all commodities for consumption in South Africa according to their origin	8
: 3 Contributions to the monthly percentage change in the PPI for all commodities for consumption in South Africa according to their origin	8
: 4 Contributions to the annual percentage change in the PPI for all commodities for consumption in South Africa according to group	9
: 5 Contributions to the monthly percentage change in the PPI for all commodities for consumption in South Africa according to group	9
: 6 Contributions to the annual percentage change in the PPI for locally produced commodities for South African consumption according to group	10
: 7 Contributions to the monthly percentage change in the PPI for locally produced commodities for South African consumption according to group	10
: 8 Contributions to the annual percentage change in the PPI for imported commodities according to group	11
: 9 Contributions to the monthly percentage change in the PPI for imported commodities according to group	11
: 10 Production Price Index for consumption in South Africa and percentage change according to origin and group	12
: 11 Production Price Index for total output of South African industry groups and percentage change according to destination and group	14
: 12 Production Price Index for output of South African industry groups for South African consumption and percentage change according to group	16
: 13 Production Price Index for imported commodities and percentage change according to group	18
: 14 Production Price Index for exported commodities and percentage change according to group	20
: 15 Production Price Index and percentage change for materials used in certain industries .	22
: 16 Production Price Index and percentage change for selected materials	22
: 17 Seasonally adjusted Production Price Index	24
tional information	
Explanatory notes	25
Glossary	28
nore information	29

ES

Coming	Issue	Expected date of publication
	May 2003	25 June 2003
	June 2003	23 July 2003
	July 2003	27 August 2003
	August 2003	23 September 2003
	September 2003	22 October 2003
	October 2003	26 November 2003

Use of the
y

The Surveys of Prices of Locally Produced commodities (which are locally sold or exported) and Imported Commodities are monthly surveys covering samples of manufacturers, exporters and importers operating in the South African economy. The results of the survey are used to compile the Production Price Index (PPI), an economic indicator, which indicates the changes in production prices of locally produced commodities (which are locally sold or exported) and imported commodities. These statistics are used by the private sector in the analysis of comparative business and industry performance, as well as for contract price adjustments.

Using the PPI
1995=100 to
=100

Following international practice, the base year of the Production Price Index (PPI) has been changed from 1995 =100 to 2000 =100 with effect from February 2001. For more information see the statistical release P0142.4 for the historical figures.

al Data
mination
ard (SDDS)
ational
etary Fund
)

South Africa's data dissemination practices are assessed against the IMF's Special Data Dissemination Standard (SDDS). A detailed description of the SDDS can be found on the IMF's Dissemination Standards Bulletin Board on the internet at <http://dsbb.imf.org>. This is a "best practice" standard. It covers four sectors of the economy i.e. the real, fiscal, financial and external sectors, as well as population and identifies four dimensions i.e. data, access, integrity and quality, of data dissemination. For each of these dimensions, the SDDS prescribes two to four monitorable elements or good practices that can be observed, or monitored, by users of statistics. However, the IMF's monitoring of the SDDS as authorised by the IMF's Board of Executive Directors is limited to the dimensions of data i.e. coverage, periodicity and timeliness, and access i.e. advanced release calendar. It should also be noted that the SDDS is a disclosure standard, i.e. it focuses on encouraging the authorities to provide information to users, including information that will enable users to assess the data.

The four institutions responsible for the compilation and dissemination of the SDDS prescribed data categories are National Treasury, the South African Revenue Services (SARS), the South African Reserve Bank (SARB) and Statistics South Africa (Stats SA).

National Treasury is responsible for compiling and disseminating data on the national budget (budgetary central government operations). SARS is responsible for compiling and disseminating of data on international merchandise trade.

The SARB is responsible for compiling and disseminating, the analytical accounts of the banking sector, the analytical accounts of the central bank, central government debt, interest rate, exchange rates, share price indices, balance of payments, the international investment position, international reserves and foreign currency liquidity.

Stats SA is responsible for compiling and disseminating data on the production index, national accounts, government accounts, industry – based statistics, social statistics, the production price index, consumer price index, labour market and population statistics.

South Africa has subscribed to the SDDS since 2 August 1996 and started posting its metadata on 27 September 1996. South Africa met the SDDS specifications for the coverage, periodicity and timeliness of the data, and for the dissemination of advanced release calendars on 18 September 2000. The National Summary Data Page has been hyperlinked since 24 April 1997 and the Data Template on International Reserves and Foreign Currency Liquidity was disseminated on 1 September 2000. South Africa is the only subscriber to the SDDS from the African continent.

Reports on Observance of Standards and Codes (ROSC) of the International Monetary Fund (IMF)

The IMF has been working actively on producing Reports on Observance of Standards and Codes (ROSC) as a step to strengthen the architecture of the international financial system. The objectives of the ROSC include the promotion of increased transparency and encouragement of implementation of internationally accepted standards and codes. One of the ROSC components is the data dissemination module, which falls under the responsibility of the IMF's Statistics Department (STA). In this module, a country is assessed according to the SDDS.

The data dissemination module of the ROSC provides a summary of South Africa's practices on the coverage, periodicity and timeliness of the data categories specified in the IMF's SDDS, and on the practices on the provision of advance release calendars for these categories. It is complemented by an assessment of the quality of the Production Price Index, using the Data Quality Assessment Framework (DQAF) developed by the IMF's Statistics Department.

The DQAF undertakes to assess data quality under the following dimensions -

- ♦ Prerequisites of quality;
- ♦ Integrity;
- ♦ Methodological soundness;
- ♦ Accuracy and reliability;
- ♦ Serviceability; and
- ♦ Accessibility

An IMF delegation visited South Africa from 7 to 18 May 2001 and produced a data ROSC for South Africa. This ROSC indicates to which extent South Africa has observed the IMF's requirements and is available at <http://www.imf.org/external/np/rosc/rosc.asp>.

Methodological

According to international best practice, the PPI is reweighted every five years. Stats SA reweighted the PPI as from June 1999 using a new basket of indicator products and their relevant weights.

The new baskets of indicator products manufactured and sold locally, exported and imported were compiled through various information sources. The information sources used to select the relevant indicator products in the different production industries are indicated in table A.

Table A – Information sources used to select products in the different production industries

Main products and industries	Sources
Locally produced and sold items	
Agriculture	Department of Agriculture
Fishing	Fishing Handbook, 1996
Forestry	Commercial Timber Resources and Roundwood Processing in South Africa, 1996
Mining and quarrying	Department of Minerals and Energy Affairs
Manufacturing	Stats SA, Census of Manufacturing, 1996
Electricity, gas and steam	Stats SA, Census of Electricity, Gas and Steam, 1995
Water	Department of Water Affairs and Forestry
Imported items	South African Revenue Services
Exported items	South African Revenue Services

The products were classified according to the relevant Standard Industrial Classification (SIC) subgroups. The products in each subgroup were then sorted according to their value of sales. The products contributing to the top 80% of the sales in each subgroup were selected as indicator products. These are the products for which prices will be monitored periodically by Stats SA.

The questionnaire(s) for each subgroup, which are used to collect the relevant price information from respondents, were adjusted to include the newly selected indicator products. Although the products on each questionnaire differ from the other questionnaires, their layout is identical.

For each indicator product a sample of manufacturers, importers and exporters was drawn from all the manufacturers, importers and exporters who manufacture, import or export the specific indicator product. The list of manufacturers, importers and exporters (sampling frame), from which the samples were drawn, are indicated in table B.

Table B– Sampling frame

Main products and industries	Sources
Locally produced and sold products	
Agriculture	List of fresh produce markets
Mining and quarrying	List of mines
Forestry	List obtained from Department of Agriculture Old sample of PPI
Fishing	Old sample of PPI List obtained from other sources
Manufacturing	List of manufacturers from the Census of Manufacturing, 1996 List of manufactures from trade unions
Electricity, gas and steam	List of producers according to the Census Of Electricity, Gas and Steam, 1995
Water	Old sample of PPI.
Imported products	List of importers obtained from South African Revenue Services
Exported items	List of exporters obtained from South African Revenue Services

Table 1 - The Production Price Index (PPI) and the annual percentage change in the PPI on a monthly basis

Base : 2000 = 100

Year		Jan.	Feb.	Mar.	Apr.	May	Jun.	Jul.	Aug.	Sep.	Oct.	Nov.	Dec.	Avg.
Commodities for consumption in South African														
2001	Index	104,8	105,2	105,5	106,6	107,3	108,1	108,7	109,4	109,5	111,1	112,2	112,9	108,4
	%	+9,3	+9,1	+8,9	+8,1	+8,6	+8,6	+8,6	+7,9	+7,8	+8,5	+8,2	+8,3	+8,4
2002	Index	116,9	119,1	120,4	122,4	123,3	123,7	125,2	126,2	126,4	127,3	127,8	126,9	123,8
	%	+11,5	+13,2	+14,1	+14,8	+14,9	+14,4	+15,2	+15,4	+15,4	+14,6	+13,9	+12,4	+14,2
2003	Index	126,4	126,5	126,5	126,4
	%	+8,1	+6,2	+5,1	+3,3
Locally produced commodities														
2001	Index	103,8	104,5	104,6	105,8	106,7	107,6	108,4	109,1	108,9	110,4	111,7	111,8	107,8
	%	+7,7	+7,7	+7,5	+6,9	+7,5	+7,9	+8,2	+7,8	+7,1	+8,1	+8,6	+8,4	+7,8
2002	Index	114,9	117,3	118,2	120,4	121,7	122,6	124,2	125,8	125,1	126,1	126,5	126,5	122,4
	%	+10,7	+12,2	+13,0	+13,8	+14,1	+13,9	+14,6	+15,3	+14,9	+14,2	+13,2	+13,1	+13,5
2003	Index	125,8	126,2	126,3	126,6
	%	+9,5	+7,6	+6,9	+5,1
Imported commodities														
2001	Index	107,2	106,9	107,9	108,5	108,8	109,1	109,3	110,0	110,9	112,6	113,5	115,6	110,0
	%	+13,1	+12,4	+12,3	+11,2	+11,8	+10,0	+9,2	+7,6	+9,2	+8,9	+7,4	+7,8	+10,0
2002	Index	122,0	123,6	125,9	127,4	127,4	126,5	127,7	127,2	129,4	130,2	130,8	127,5	127,1
	%	+13,8	+15,6	+16,7	+17,4	+17,1	+15,9	+16,8	+15,6	+16,7	+15,6	+15,2	+10,3	+15,5
2003	Index	127,6	126,8	126,5	125,6
	%	+4,6	+2,6	+0,5	-1,4

Table 2 - Contributions to the annual percentage change in the PPI for all commodities for consumption in South Africa according to their origin

Origin of contribution	Contribution at March 2003	Contribution at April 2003
Locally produced commodities	+4,9	+3,7
Imported commodities	+0,2	-0,4
Total groups	+5,1	+3,3

Table 3 - Contributors to the monthly percentage change in the PPI for all commodities for consumption in South Africa according to their origin

Origin of contribution	Contribution at March 2003	Contribution at April 2003
Locally produced commodities	+0,1	+0,2
Imported commodities	-0,1	-0,3
Total groups	0,0	-0,1

Table 4 - Contributions to the annual percentage change in the PPI for all commodities for consumption in South Africa according to group

Group	Contribution at March 2003	Contribution at April 2003
Agriculture	-0,2	-0,4
Mining and quarrying	+0,2	-0,1
Food at manufacturing	+1,1	+0,8
Beverages	+0,3	+0,3
Tobacco products	+0,1	+0,1
Textiles and made-up goods	+0,2	+0,2
Wearing apparel	+0,1	+0,1
Food and wood products	+0,1	+0,1
Textile, paper products and printing	+0,8	+0,5
Products of petroleum and coal	+0,3	+0,1
Chemicals and chemical products	+0,6	+0,4
Rubber and plastic products	+0,3	+0,2
Non-metallic mineral products	+0,2	+0,2
Basic metals	+0,1	0,0
Steel products	+0,3	+0,3
Non-electrical machinery and equipment	+0,2	+0,2
Office, accounting and computing machinery	-0,1	-0,1
Electrical machinery and apparatus	+0,1	+0,1
Radio, TV, communication equipment and apparatus	+0,1	+0,1
Transport equipment	+0,7	+0,7
Furniture	+0,1	+0,1
Other manufactures	+0,1	0,0
Electricity	-0,7	-0,6
All other groups	+0,1	0,0
All groups	+5,1	+3,3

Table 5 - Contributions to the monthly percentage change in the PPI for all commodities for consumption in South Africa according to group

Group	Contribution at March 2003	Contribution at April 2003
Agriculture	0,0	-0,3
Mining and quarrying	+0,1	0,0
Beverages	0,0	+0,2
Products of petroleum and coal	+0,2	0,0
Chemicals and chemical products	0,0	+0,1
Rubber and plastic products	0,0	-0,1
Basic metals	0,0	-0,1
Transport equipment	-0,1	0,0
Electricity	-0,1	+0,1
All other groups	-0,1	0,0
All groups	0,0	-0,1

Table 6 - Contributors to the annual percentage change in the PPI for locally produced commodities according to group

Group	Contribution at March 2003	Contribution at April 2003
Agriculture	-0,2	-0,4
Mining and quarrying	-0,1	-0,1
Food at manufacturing	+1,6	+1,2
Beverages	+0,4	+0,4
Tobacco products	+0,1	+0,2
Textiles and made-up goods	+0,3	+0,3
Wearing apparel	+0,1	+0,1
Food and wood products	+0,2	+0,2
Textile, paper products and printing	+1,2	+0,8
Products of petroleum and coal	+0,4	+0,2
Chemicals and chemical products	+0,7	+0,6
Rubber and plastic products	+0,4	+0,2
Non-metallic mineral products	+0,3	+0,3
Basic metals	+0,2	+0,1
Metals products	+0,4	+0,4
Non-electrical machinery and equipment	+0,2	+0,2
Electrical machinery and apparatus	+0,2	+0,2
Radio, TV, communication equipment and apparatus	+0,2	+0,2
Transport equipment	+1,0	+1,0
Furniture	+0,1	+0,1
Other manufactures	+0,1	+0,1
Electricity	-1,0	-0,9
All other groups	+0,1	-0,3
All groups	+6,9	+5,1

Table 7 - Contributors to the monthly percentage change in the PPI for locally produced commodities according to group

Group	Contribution at March 2003	Contribution at April 2003
Agriculture	0,0	-0,3
Mining and quarrying	-0,1	+0,1
Beverages	0,0	+0,2
Tobacco products	0,0	+0,1
Textile, paper products and printing	0,0	+0,1
Products of petroleum and coal	+0,2	0,0
Chemicals and chemical products	0,0	+0,1
Rubber and plastic products	0,0	-0,1
Basic metals	0,0	-0,1
Electricity	-0,1	+0,1
All other groups	+0,1	0,0
All groups	+0,1	+0,2

Table 8 - Contributors to the annual percentage change in the PPI for imported commodities according to group

Group	Contribution at March 2003	Contribution at April 2003
Agriculture	-0,2	-0,3
Mining and quarrying	+1,1	+0,1
Food at manufacturing	-0,2	-0,3
Textile, paper products and printing	-0,1	-0,1
Chemicals and chemical products	+0,3	0,0
Rubber and plastic products	+0,1	0,0
Basic metals	-0,2	-0,3
Non-electrical machinery and equipment	+0,3	+0,2
Office, accounting and computing machinery	-0,5	-0,5
Radio, TV, communication equipment and apparatus	-0,1	-0,1
Medical, precision and optical instruments	-0,1	-0,2
All other groups	+0,1	+0,1
All groups	+0,5	-1,4

Table 9 - Contributors to the monthly percentage change in the PPI for imported commodities according to group

Group	Contribution at March 2003	Contribution at April 2003
Agriculture	-0,1	-0,1
Mining and quarrying	+0,6	-0,1
Food at manufacturing	-0,1	-0,1
Textile, paper products and printing	-0,1	-0,1
Chemicals and chemical products	0,0	-0,1
Basic metals	0,0	-0,2
Non-electrical machinery and equipment	-0,1	-0,1
Transport equipment	-0,2	+0,1
All other groups	-0,2	0,0
All groups	-0,2	-0,7

Base : 2000 = 100

Origin/Group	Weight	Indices			% change between	
		Apr 2002	Mar 2003	Apr 2003	Mar 2003 and Apr 2003	Apr 2002 and Apr 2003
groups	100,00	122,4	126,5	126,4	-0,1	+3,3
South African	73,00	120,4	126,3	126,6	+0,2	+5,1
Imported	27,00	127,4	126,5	125,6	-0,7	-1,4
Agriculture, Forestry, Fishing and Mining	15,22	128,6	127,2	125,1	-1,7	-2,7
1.1 Agriculture	7,68	133,3	132,0	127,3	-3,6	-4,5
1.1.1 Food	7,34	131,8	128,0	125,0	-2,3	-5,2
Grain	1,51	175,0	127,5	117,2	-8,1	-33,0
Sugar cane	0,38	129,9	140,6	140,6	0,0	+8,2
Oil seeds	0,18	181,2	168,8	159,5	-5,5	-12,0
Vegetables and dried beans	0,68	103,7	147,4	157,3	+6,7	+51,7
Fruit	0,68	125,8	118,3	104,8	-11,4	-16,7
Meat	2,37	123,6	127,2	126,0	-0,9	+1,9
Milk and eggs	0,96	119,0	126,6	127,1	+0,4	+6,8
Other	0,58	94,5	100,7	101,1	+0,4	+7,0
1.1.2 Other agriculture	0,34	153,2	183,4	157,2	-14,3	+2,6
1.2 Forestry	1,97	100,0	100,0	100,0	0,0	0,0
1.3 Fishing	0,12	117,8	135,9	135,9	0,0	+15,4
1.4 Mining and quarrying	5,45	129,1	126,6	127,5	+0,7	-1,2
Coal	1,59	115,0	108,9	116,8	+7,3	+1,6
Metal ores	0,68	139,9	122,2	118,0	-3,4	-15,7
Other minerals	3,18	131,6	134,3	132,6	-1,3	+0,8
Manufacturing	80,28	121,7	128,1	128,4	+0,2	+5,5
South African	56,60	120,1	129,6	130,3	+0,5	+8,5
Imported	23,68	125,9	124,9	124,2	-0,6	-1,4
2.1 Food	10,16	132,0	141,5	141,1	-0,3	+6,9
Meat	1,79	131,8	139,4	140,3	+0,6	+6,4
Fresh meat	1,43	134,5	142,5	143,5	+0,7	+6,7
Meat products	0,36	119,9	125,6	126,1	+0,4	+5,2
Fish and fish products	0,19	146,8	148,5	147,8	-0,5	+0,7
Fruit and vegetable products	0,47	115,4	127,1	128,4	+1,0	+11,3
Fats and oils	0,84	135,7	133,2	130,9	-1,7	-3,5
Milk products	1,31	123,1	141,7	144,0	+1,6	+17,0
Grain mill products	1,82	147,6	154,1	150,0	-2,7	+1,6
Sugar	0,35	113,9	126,3	128,9	+2,1	+13,2
Coffee and tea	0,23	116,8	131,5	131,6	+0,1	+12,7
Other	3,16	129,8	140,8	140,9	+0,1	+8,6
2.2 Beverages	3,26	115,3	120,0	126,8	+5,7	+10,0
Alcoholic	2,35	116,9	121,9	130,0	+6,6	+11,2
Non-alcoholic	0,91	111,2	114,9	118,4	+3,0	+6,5
2.3 Tobacco products	1,15	115,3	122,0	129,1	+5,8	+12,0
2.4 Textiles and made-up goods	2,39	113,2	122,3	122,1	-0,2	+7,9
Spinning, weaving and finishing of textiles	1,43	112,7	122,1	121,7	-0,3	+8,0
Other textiles	0,96	114,1	122,8	122,7	-0,1	+7,5
2.5 Wearing apparel	1,81	113,6	120,4	120,3	-0,1	+5,9
Knitted and crocheted fabrics and articles	0,42	115,3	124,3	123,3	-0,8	+6,9
Wearing apparel	1,39	112,9	119,1	119,3	+0,2	+5,7
Men's and boys' clothing	0,56	111,8	120,8	120,8	0,0	+8,1
Women's and girls' clothing	0,78	112,7	116,6	117,0	+0,3	+3,8
Other, including articles of fur	0,05	125,9	137,1	137,1	0,0	+8,9
2.6 Leather and leather products	0,29	130,0	131,0	128,8	-1,7	-0,9
2.7 Footwear	0,69	119,6	123,5	123,7	+0,2	+3,4
2.8 Wood and wood products	1,26	118,9	127,7	130,4	+2,1	+9,7
Sawmilling and planing of wood	0,44	107,1	113,3	116,6	+2,9	+8,9
Products of wood, cork and plaiting materials	0,82	125,1	135,4	137,7	+1,7	+10,1
2.9 Paper, paper products and printing	8,13	123,8	130,8	131,4	+0,5	+6,1
Paper and paper products	3,21	126,0	135,4	136,2	+0,6	+8,1
Publishing and printing	4,92	122,2	127,9	128,4	+0,4	+5,1
2.10 Products of petroleum and coal	2,75	128,3	133,9	134,6	+0,5	+4,9
2.11 Chemicals and chemical products	8,39	126,1	131,6	132,6	+0,8	+5,2
Basic chemicals	3,54	134,3	137,6	138,2	+0,4	+2,9
Fertilizers	0,45	130,8	132,3	131,7	-0,5	+0,7
Other basic chemicals	3,09	135,4	138,8	139,6	+0,6	+3,1
Compounded chemical products	4,85	119,8	127,0	128,1	+0,9	+6,9
Pharmaceutical products	1,47	113,4	123,9	125,4	+1,2	+10,6
Other compounded chemical products	3,38	122,5	128,2	129,2	+0,8	+5,5

Base : 2000 = 100

Origin/Group	Weight	Indices			% -change between	
		Apr 2002	Mar 2003	Apr 2003	Mar 2003 and Apr 2003	Apr 2002 and Apr 2003
2.12 Rubber and plastic products	2,71	113,8	124,1	120,6	-2,8	+6,0
Rubber products	0,85	123,2	134,4	121,9	-9,3	-1,1
Plastic products	1,86	109,4	119,3	120,0	+0,6	+9,7
2.13 Non-metallic mineral products	2,25	121,4	131,8	131,8	0,0	+8,6
Glass and glass products	0,61	116,0	125,7	125,6	-0,1	+8,3
Other	1,64	123,1	133,7	133,8	+0,1	+8,7
2.14 Basic metals	3,97	121,2	123,3	120,0	-2,7	-1,0
Ferrous	1,82	107,0	130,8	130,8	0,0	+22,2
Non-ferrous	2,15	133,2	116,9	110,9	-5,1	-16,7
2.15 Metal products	3,18	115,7	127,7	127,4	-0,2	+10,1
Structural metal products	1,00	112,2	130,9	130,9	0,0	+16,7
Other	2,18	117,6	126,3	126,0	-0,2	+7,1
2.16 Non-electrical machinery and equipment	6,72	120,5	123,9	123,7	-0,2	+2,7
General purpose machinery	2,44	125,4	126,7	127,1	+0,3	+1,4
Special purpose machinery	3,69	119,7	124,3	123,6	-0,6	+3,3
Household appliances	0,59	120,5	125,6	125,5	-0,1	+4,1
2.17 Office, accounting and computing machinery	1,41	115,7	105,0	104,7	-0,3	-9,5
2.18 Electrical machinery and apparatus	2,48	118,0	123,8	123,7	-0,1	+4,8
Electric motors, generators and transformers	0,34	113,5	116,0	116,0	0,0	+2,2
Electricity distribution and control apparatus	0,75	115,8	124,3	124,3	0,0	+7,3
Insulated wire and cable	0,69	119,9	125,5	124,9	-0,5	+4,2
Other	0,70	119,8	124,6	124,8	+0,2	+4,2
2.19 Radio, television and communication equipment and apparatus	2,70	120,6	125,1	125,1	0,0	+3,7
2.20 Medical, precision and optical instruments	1,18	125,3	121,8	121,1	-0,6	-3,4
Medical appliances and instruments for measuring, checking, testing and navigating	0,99	125,0	121,2	120,6	-0,5	-3,5
Other, including watches and clocks	0,19	126,0	124,0	123,0	-0,8	-2,4
2.21 Transport equipment	11,04	118,3	125,9	126,1	+0,2	+6,6
Motor vehicles, parts and accessories	10,50	118,3	126,7	127,0	+0,2	+7,4
Motor vehicles	5,43	111,0	121,6	121,6	0,0	+9,5
Bodies, trailers and semi-trailers	0,16	113,1	119,4	119,4	0,0	+5,6
Parts and accessories	4,91	126,1	132,0	132,7	+0,5	+5,2
Other transport equipment	0,54	117,6	109,8	109,3	-0,5	-7,1
2.22 Furniture	1,01	110,0	119,1	119,1	0,0	+8,3
2.23 Other manufactures	1,35	113,2	117,2	117,1	-0,1	+3,4
Electricity, Gas Steam and Water	4,50	110,3	92,3	93,8	+1,6	-15,0
3.1 Electricity	4,17	109,2	89,3	91,0	+1,9	-16,7
3.2 Gas, Steam and water	0,33	123,7	129,7	128,7	-0,8	+4,0

11 - Production Price Index for total output of South African industry groups according to destination and group

Base : 2000 = 100

Origin/Group	Weight	Indices			% change between	
		Apr 2002	Mar 2003	Apr 2003	Mar 2003 and Apr 2003	Apr 2002 and Apr 2003
groups	100,00	120,7	124,9	124,7	-0,2	+3,3
South African	75,88	120,4	126,3	126,6	+0,2	+5,1
Exported	24,12	122,0	120,5	119,1	-1,2	-2,4
Agriculture, Forestry, Fishing and Mining	19,69	128,0	121,7	119,7	-1,6	-6,5
1.1 Agriculture	8,55	133,2	131,6	127,6	-3,0	-4,2
1.1.1 Food	8,35	131,1	127,0	124,6	-1,9	-5,0
Grain	1,70	184,1	142,4	134,7	-5,4	-26,8
Sugar cane	0,40	129,9	140,6	140,6	0,0	+8,2
Oil seeds	0,18	181,2	168,8	159,5	-5,5	-12,0
Vegetables and dried beans	0,81	102,2	139,9	148,4	+6,1	+45,2
Fruit	1,20	107,0	95,0	86,5	-8,9	-19,2
Meat	2,48	123,4	126,9	125,6	-1,0	+1,8
Milk and eggs	1,00	119,1	126,7	127,2	+0,4	+6,8
Other	0,58	93,0	101,3	101,3	0,0	+8,9
1.1.2 Other agriculture	0,20	167,0	206,3	177,2	-14,1	+6,1
1.2 Forestry	2,06	100,0	100,0	100,0	0,0	0,0
1.3 Fishing	0,16	119,3	136,6	136,2	-0,3	+14,2
1.4 Mining and quarrying	8,92	129,3	116,5	116,0	-0,4	-10,3
Coal	3,22	143,8	117,5	120,1	+2,2	-16,5
Metal ores	3,64	122,2	117,1	114,9	-1,9	-6,0
Other minerals	2,06	119,2	113,6	111,4	-1,9	-6,5
Manufacturing	75,63	119,5	127,7	127,9	+0,2	+7,0
South African	58,83	120,1	129,6	130,3	+0,5	+8,5
Exported	16,80	117,7	121,5	120,3	-1,0	+2,2
2.1 Food	10,77	131,1	141,1	141,0	-0,1	+7,6
Meat	1,83	131,5	139,3	140,3	+0,7	+6,7
Fresh meat	1,34	134,4	142,8	143,9	+0,8	+7,1
Meat products	0,49	120,7	126,3	126,7	+0,3	+5,0
Fish and fish products	0,24	130,9	134,9	133,5	-1,0	+2,0
Fruit and vegetable products	0,77	114,9	121,3	121,7	+0,3	+5,9
Fats and oils	0,61	139,8	141,8	138,5	-2,3	-0,9
Milk products	1,35	122,9	141,7	144,0	+1,6	+17,2
Grain mill products	1,80	146,0	155,0	152,0	-1,9	+4,1
Sugar	0,70	132,9	144,9	146,5	+1,1	+10,2
Coffee and tea	0,24	117,0	131,9	132,0	+0,1	+12,8
Other	3,23	129,9	141,1	141,3	+0,1	+8,8
2.2 Beverages	3,58	114,5	119,7	125,1	+4,5	+9,3
Alcoholic	2,61	115,8	121,7	127,8	+5,0	+10,4
Non-alcoholic	0,97	110,9	114,5	118,0	+3,1	+6,4
2.3 Tobacco products	1,22	115,0	121,7	128,7	+5,8	+11,9
2.4 Textiles and made-up goods	2,26	116,9	128,1	128,1	0,0	+9,6
Spinning, weaving and finishing of textiles	1,37	120,7	133,2	133,2	0,0	+10,4
Other textiles	0,89	111,3	120,6	120,6	0,0	+8,4
2.5 Wearing apparel	1,83	113,4	119,9	120,1	+0,2	+5,9
Knitted and crocheted fabrics and articles	0,38	115,8	125,7	125,7	0,0	+8,5
Wearing apparel	1,45	112,8	118,5	118,7	+0,2	+5,2
Men's and boys' clothing	0,60	113,7	121,8	121,8	0,0	+7,1
Women's and girls' clothing	0,80	111,3	115,2	115,6	+0,3	+3,9
Other, including articles of fur	0,05	120,5	130,4	130,4	0,0	+8,2
2.6 Leather and leather products	0,33	121,8	131,6	124,8	-5,2	+2,5
2.7 Footwear	0,55	118,8	123,8	123,6	-0,2	+4,0
2.8 Wood and wood products	1,20	122,3	133,0	135,8	+2,1	+11,0
Sawmilling and planing of wood	0,36	121,5	133,2	136,4	+2,4	+12,3
Products of wood, cork and plaiting materials	0,84	122,9	132,9	135,6	+2,0	+10,3
2.9 Paper, paper products and printing	8,36	121,4	128,0	128,7	+0,5	+6,0
Paper and paper products	3,60	121,0	128,2	129,0	+0,6	+6,6
Publishing and printing	4,76	121,7	128,0	128,5	+0,4	+5,6
2.10 Products of petroleum and coal	3,27	133,2	137,7	133,3	-3,2	+0,1
2.11 Chemicals and chemical products	7,41	120,5	126,6	128,3	+1,3	+6,5
Basic chemicals	3,53	120,8	125,2	127,7	+2,0	+5,7
Fertilizers	0,59	124,0	122,6	122,3	-0,2	-1,4
Other basic chemicals	2,94	120,2	125,7	128,7	+2,4	+7,1
Compounded chemical products	3,88	120,1	127,7	128,8	+0,9	+7,2
Pharmaceutical products	0,88	112,6	124,6	127,0	+1,9	+12,8
Other compounded chemical products	3,00	122,2	128,6	129,3	+0,5	+5,8

a 11 - Production Price Index for total output of South African industry groups according to destination and group (concluded)

Base : 2000 = 100

Origin/Group	Weight	Indices			% -change between	
		Apr 2002	Mar 2003	Apr 2003	Mar 2003 and Apr 2003	Apr 2002 and Apr 2003
2.12 Rubber and plastic products	2,48	115,9	127,3	123,6	-2,9	+6,6
Rubber products	0,75	130,3	144,1	130,3	-9,6	0,0
Plastic products	1,73	109,5	119,8	120,6	+0,7	+10,1
2.13 Non-metallic mineral products	2,11	119,1	131,2	131,3	+0,1	+10,2
Glass and glass products	0,56	114,5	125,8	125,8	0,0	+9,9
Other	1,55	120,3	132,7	132,9	+0,2	+10,5
2.14 Basic metals	8,68	120,3	124,5	123,9	-0,5	+3,0
Ferrous	4,04	119,0	135,3	134,2	-0,8	+12,8
Non-ferrous	4,64	121,5	115,2	115,1	-0,1	-5,3
2.15 Metal products	3,23	111,9	126,2	126,2	0,0	+12,8
Structural metal products	1,24	112,0	131,1	131,1	0,0	+17,1
Other	1,99	111,9	123,1	123,1	0,0	+10,0
2.16 Non-electrical machinery and equipment	3,57	113,7	122,5	122,5	0,0	+7,7
General purpose machinery	1,26	110,4	116,1	116,1	0,0	+5,2
Special purpose machinery	1,96	113,7	124,4	124,4	0,0	+9,4
Household appliances	0,35	113,1	121,5	121,5	0,0	+7,4
2.17 Office, accounting and computing machinery	0,14	100,3	100,8	100,8	0,0	+0,5
2.18 Electrical machinery and apparatus	1,90	117,8	125,9	125,9	0,0	+6,9
Electric motors, generators and transformers	0,19	127,1	133,9	133,9	0,0	+5,4
Electricity distribution and control apparatus	0,45	116,0	129,3	129,3	0,0	+11,5
Insulated wire and cable	0,69	118,2	122,9	122,9	0,0	+4,0
Other	0,57	115,6	123,9	123,9	0,0	+7,2
2.19 Radio, television and communication equipment and apparatus	1,34	127,9	141,0	141,0	0,0	+10,2
2.20 Medical, precision and optical instruments	0,32	120,3	125,7	125,2	-0,4	+4,1
Medical appliances and instruments for measuring, checking, testing and navigating	0,28	120,7	127,0	126,4	-0,5	+4,7
Other, including watches and clocks	0,04	117,4	116,9	116,9	0,0	-0,4
2.21 Transport equipment	8,32	109,7	121,4	121,4	0,0	+10,7
Motor vehicles, parts and accessories	8,07	110,0	122,1	122,1	0,0	+11,0
Motor vehicles	5,31	111,0	122,5	122,5	0,0	+10,4
Bodies, trailers and semi-trailers	0,33	105,7	108,3	108,3	0,0	+2,5
Parts and accessories	2,43	108,2	122,9	122,9	0,0	+13,6
Other transport equipment	0,25	102,6	103,5	103,5	0,0	+0,9
2.22 Furniture	1,39	107,6	114,4	114,4	0,0	+6,3
2.23 Other manufactures	1,37	109,5	113,4	113,4	0,0	+3,6
Electricity, Gas Steam and Water	4,68	110,3	92,3	93,8	+1,6	-15,0
3.1 Electricity	4,35	109,2	89,3	91,0	+1,9	-16,7
3.2 Gas, Steam and water	0,33	123,7	129,7	128,7	-0,8	+4,0

12 - Production Price Index for output of South African industry groups for South African consumption according to group

Base : 2000 = 100

Origin/Group	Weight	Indices			% change between	
		Apr 2002	Mar 2003	Apr 2003	Mar 2003 and Apr 2003	Apr 2002 and Apr 2003
groups	100,00	120,4	126,3	126,6	+0,2	+5,1
South African	100,00	120,4	126,3	126,6	+0,2	+5,1
Exported	-	-	-	-	-	-
Agriculture, Forestry, Fishing and Mining	16,29	125,7	123,6	121,6	-1,6	-3,3
1.1 Agriculture	9,67	134,1	133,4	128,9	-3,4	-3,9
1.1.1 Food	9,44	132,2	128,8	126,0	-2,2	-4,7
Grain	1,59	188,0	129,6	118,9	-8,3	-36,8
Sugar cane	0,52	129,9	140,6	140,6	0,0	+8,2
Oil seeds	0,24	181,2	168,8	159,5	-5,5	-12,0
Vegetables and dried beans	0,93	103,7	147,4	157,3	+6,7	+51,7
Fruit	0,91	125,2	117,7	103,9	-11,7	-17,0
Meat	3,23	123,7	127,4	126,2	-0,9	+2,0
Milk and eggs	1,32	119,0	126,6	127,1	+0,4	+6,8
Other	0,70	93,0	101,3	101,3	0,0	+8,9
1.1.2 Other agriculture	0,23	167,4	212,3	177,4	-16,4	+6,0
1.2 Forestry	2,67	100,0	100,0	100,0	0,0	0,0
1.3 Fishing	0,16	118,0	136,5	136,5	0,0	+15,7
1.4 Mining and quarrying	3,79	121,8	114,0	117,2	+2,8	-3,8
Coal	2,09	115,7	109,3	117,6	+7,6	+1,6
Metal ores	0,88	141,7	123,3	118,8	-3,6	-16,2
Other minerals	0,82	116,8	116,8	115,2	-1,4	-1,4
Manufacturing	77,54	120,1	129,6	130,3	+0,5	+8,5
South African	77,54	120,1	129,6	130,3	+0,5	+8,5
Exported	-	-	-	-	-	-
2.1 Food	12,44	132,3	143,6	143,5	-0,1	+8,5
Meat	2,20	132,9	141,6	142,8	+0,8	+7,4
Fresh meat	1,85	135,4	144,2	145,4	+0,8	+7,4
Meat products	0,35	119,0	127,2	127,9	+0,6	+7,5
Fish and fish products	0,10	162,2	181,2	179,5	-0,9	+10,7
Fruit and vegetable products	0,57	114,1	127,1	128,5	+1,1	+12,6
Fats and oils	0,72	140,7	142,6	139,1	-2,5	-1,1
Milk products	1,72	123,4	142,7	145,1	+1,7	+17,6
Grain mill products	2,25	146,6	155,8	152,8	-1,9	+4,2
Sugar	0,48	113,9	126,2	128,8	+2,1	+13,1
Coffee and tea	0,31	116,8	131,9	132,1	+0,2	+13,1
Other	4,09	130,5	141,8	141,9	+0,1	+8,7
2.2 Beverages	4,21	114,8	119,4	126,5	+5,9	+10,2
Alcoholic	2,98	116,3	121,3	129,8	+7,0	+11,6
Non-alcoholic	1,23	111,3	114,9	118,6	+3,2	+6,6
2.3 Tobacco products	1,55	115,2	122,0	129,1	+5,8	+12,1
2.4 Textiles and made-up goods	2,52	112,3	123,9	123,9	0,0	+10,3
Spinning, weaving and finishing of textiles	1,49	112,6	125,3	125,3	0,0	+11,3
Other textiles	1,03	111,6	121,6	121,6	0,0	+9,0
2.5 Wearing apparel	2,19	113,2	120,7	120,9	+0,2	+6,8
Knitted and crocheted fabrics and articles	0,46	115,9	126,7	126,7	0,0	+9,3
Wearing apparel	1,73	112,7	119,3	119,6	+0,3	+6,1
Men's and boys' clothing	0,67	112,6	122,6	122,6	0,0	+8,9
Women's and girls' clothing	1,00	111,9	116,0	116,4	+0,3	+4,0
Other, including articles of fur	0,06	123,4	134,7	134,7	0,0	+9,2
2.6 Leather and leather products	0,21	121,6	129,9	126,6	-2,5	+4,1
2.7 Footwear	0,68	118,5	123,5	123,5	0,0	+4,2
2.8 Wood and wood products	1,46	119,1	128,9	132,1	+2,5	+10,9
Sawmilling and planing of wood	0,46	109,2	118,0	122,5	+3,8	+12,2
Products of wood, cork and plaiting materials	1,00	123,8	133,9	136,6	+2,0	+10,3
2.9 Paper, paper products and printing	9,82	122,8	131,1	132,1	+0,8	+7,6
Paper and paper products	3,70	123,9	135,4	137,3	+1,4	+10,8
Publishing and printing	6,12	122,2	128,6	129,1	+0,4	+5,6
2.10 Products of petroleum and coal	3,29	131,5	137,7	138,5	+0,6	+5,3
2.11 Chemicals and chemical products	6,76	120,3	129,1	131,2	+1,6	+9,1
Basic chemicals	2,52	121,6	128,4	131,1	+2,1	+7,8
Fertilizers	0,49	128,8	128,2	127,8	-0,3	-0,8
Other basic chemicals	2,03	119,5	128,4	132,0	+2,8	+10,5
Compounded chemical products	4,24	119,3	129,2	131,0	+1,4	+9,8
Pharmaceutical products	1,05	111,3	124,6	127,5	+2,3	+14,6
Other compounded chemical products	3,19	121,9	130,7	132,1	+1,1	+8,4

2.12 - Production Price Index for output of South African industry groups for South African consumption according to group (concluded)

Base : 2000 = 100

Origin/Group	Weight	Indices			% -change between	
		Apr 2002	Mar 2003	Apr 2003	Mar 2003 and Apr 2003	Apr 2002 and Apr 2003
2.12 Rubber and plastic products	2,95	115,0	127,0	123,2	-3,0	+7,1
Rubber products	0,83	127,9	143,2	127,5	-11,0	-0,3
Plastic products	2,12	110,1	120,8	121,7	+0,7	+10,5
2.13 Non-metallic mineral products	2,50	120,0	132,9	133,0	+0,1	+10,8
Glass and glass products	0,66	114,4	127,2	127,2	0,0	+11,2
Other	1,84	121,8	134,7	134,8	+0,1	+10,7
2.14 Basic metals	4,20	121,1	125,2	122,9	-1,8	+1,5
Ferrous	1,90	104,1	135,4	135,4	0,0	+30,1
Non-ferrous	2,30	135,3	117,1	112,9	-3,6	-16,6
2.15 Metal products	3,58	112,0	126,2	126,2	0,0	+12,7
Structural metal products	1,31	112,5	132,4	132,4	0,0	+17,7
Other	2,27	111,5	122,5	122,5	0,0	+9,9
2.16 Non-electrical machinery and equipment	2,94	112,6	119,8	119,8	0,0	+6,4
General purpose machinery	0,94	112,6	116,1	116,1	0,0	+3,1
Special purpose machinery	1,60	112,5	121,7	121,7	0,0	+8,2
Household appliances	0,40	113,5	121,9	121,9	0,0	+7,4
2.17 Office, accounting and computing machinery	0,02	104,4	109,7	109,7	0,0	+5,1
2.18 Electrical machinery and apparatus	2,15	119,1	127,7	127,7	0,0	+7,2
Electric motors, generators and transformers	0,20	129,5	135,1	135,1	0,0	+4,3
Electricity distribution and control apparatus	0,52	117,1	131,2	131,2	0,0	+12,0
Insulated wire and cable	0,86	117,8	122,8	122,8	0,0	+4,2
Other	0,57	118,7	128,4	128,4	0,0	+8,2
2.19 Radio, television and communication equipment and apparatus	1,58	130,6	145,3	145,3	0,0	+11,3
2.20 Medical, precision and optical instruments	0,25	116,3	117,6	118,7	+0,9	+2,1
Medical appliances and instruments for measuring, checking, testing and navigating	0,22	115,3	116,7	118,0	+1,1	+2,3
Other, including watches and clocks	0,03	124,3	124,2	124,2	0,0	-0,1
2.21 Transport equipment	9,60	110,5	122,9	122,9	0,0	+11,2
Motor vehicles, parts and accessories	9,55	110,4	122,9	122,9	0,0	+11,3
Motor vehicles	6,62	111,7	123,7	123,7	0,0	+10,7
Bodies, trailers and semi-trailers	0,17	113,8	120,3	120,3	0,0	+5,7
Parts and accessories	2,76	107,2	121,0	121,0	0,0	+12,9
Other transport equipment	0,05	102,3	105,0	105,0	0,0	+2,6
2.22 Furniture	1,27	110,9	120,7	120,7	0,0	+8,8
2.23 Other manufactures	1,37	111,2	116,0	116,0	0,0	+4,3
Electricity, Gas Steam and Water	6,17	110,2	92,2	93,7	+1,6	-15,0
3.1 Electricity	5,72	109,2	89,3	91,0	+1,9	-16,7
3.2 Gas, Steam and water	0,45	123,7	129,7	128,7	-0,8	+4,0

13 - Production Price Index for imported commodities according to group

Base : 2000 = 100

Origin/Group	Weight	Indices			% change between	
		Apr 2002	Mar 2003	Apr 2003	Mar 2003 and Apr 2003	Apr 2002 and Apr 2003
groups	100,00	127,4	126,5	125,6	-0,7	-1,4
Agriculture, Forestry, Fishing and Mining	12,27	131,8	132,8	130,3	-1,9	-1,1
1.1 Agriculture	2,27	124,8	116,6	110,2	-5,5	-11,7
1.1.1 Food	1,66	127,0	117,6	110,8	-5,8	-12,8
Grain	1,30	132,1	120,7	111,8	-7,4	-15,4
Sugar cane	-	-	-	-	-	-
Oil seeds	-	-	-	-	-	-
Vegetables and dried beans	-	-	-	-	-	-
Fruit	0,06	135,8	132,4	131,1	-1,0	-3,5
Meat	0,05	104,2	104,2	104,2	0,0	0,0
Milk and eggs	-	-	-	-	-	-
Other	0,25	101,6	98,9	101,1	+2,2	-0,5
1.1.2 Other agriculture	0,61	119,0	114,4	108,7	-5,0	-8,7
1.2 Forestry	0,05	100,0	100,0	100,0	0,0	0,0
1.3 Fishing	0,01	101,9	101,6	101,6	0,0	-0,3
1.4 Mining and quarrying	9,94	133,1	136,3	134,7	-1,2	+1,2
Coal	0,26	100,3	100,3	100,5	+0,2	+0,2
Metal ores	0,12	99,5	98,5	98,5	0,0	-1,0
Other minerals	9,56	134,0	137,2	135,6	-1,2	+1,2
Manufacturing	87,73	125,9	124,9	124,2	-0,6	-1,4
2.1 Food	3,96	131,4	125,2	122,5	-2,2	-6,8
Meat	0,67	126,3	123,5	122,6	-0,7	-2,9
Fresh meat	0,46	126,5	125,1	123,7	-1,1	-2,2
Meat products	0,21	126,3	120,4	120,4	0,0	-4,7
Fish and fish products	0,44	136,8	127,9	127,9	0,0	-6,5
Fruit and vegetable products	0,18	125,3	126,5	126,3	-0,2	+0,8
Fats and oils	1,16	128,3	118,4	118,1	-0,3	-8,0
Milk products	0,21	118,6	122,0	121,6	-0,3	+2,5
Grain mill products	0,65	153,8	135,0	120,9	-10,4	-21,4
Sugar	0,01	132,8	148,5	148,5	0,0	+11,8
Coffee and tea	0,03	116,8	117,6	118,0	+0,3	+1,0
Other	0,61	116,6	123,8	123,3	-0,4	+5,7
2.2 Beverages	0,66	122,0	127,3	129,3	+1,6	+6,0
Alcoholic	0,64	122,7	128,2	130,3	+1,6	+6,2
Non-alcoholic	0,02	102,4	103,0	103,0	0,0	+0,6
2.3 Tobacco products	0,04	116,8	116,8	116,8	0,0	0,0
2.4 Textiles and made-up goods	2,03	116,8	117,6	116,5	-0,9	-0,3
Spinning, weaving and finishing of textiles	1,28	112,8	111,8	110,2	-1,4	-2,3
Other textiles	0,75	123,5	127,4	127,0	-0,3	+2,8
2.5 Wearing apparel	0,78	115,6	117,2	115,3	-1,6	-0,3
Knitted and crocheted fabrics and articles	0,30	113,9	115,3	110,5	-4,2	-3,0
Wearing apparel	0,48	116,9	118,5	118,5	0,0	+1,4
Men`s and boys` clothing	0,24	105,9	107,2	107,2	0,0	+1,2
Women`s and girls` clothing	0,20	126,3	126,4	126,4	0,0	+0,1
Other, including articles of fur	0,04	133,3	144,0	144,0	0,0	+8,0
2.6 Leather and leather products	0,51	139,5	132,3	131,5	-0,6	-5,7
2.7 Footwear	0,73	121,7	123,0	123,5	+0,4	+1,5
2.8 Wood and wood products	0,71	117,6	121,5	121,0	-0,4	+2,9
Sawmilling and planing of wood	0,38	100,0	97,5	97,3	-0,2	-2,7
Products of wood, cork and plaiting materials	0,33	136,3	147,3	146,5	-0,5	+7,5
2.9 Paper, paper products and printing	3,57	130,6	128,0	125,6	-1,9	-3,8
Paper and paper products	1,88	138,5	135,0	129,6	-4,0	-6,4
Publishing and printing	1,69	123,0	121,2	121,8	+0,5	-1,0
2.10 Products of petroleum and coal	1,32	101,5	102,5	102,5	0,0	+1,0
2.11 Chemicals and chemical products	12,81	134,3	135,2	134,4	-0,6	+0,1
Basic chemicals	6,30	148,5	147,8	146,2	-1,1	-1,5
Fertilizers	0,32	140,0	150,4	148,6	-1,2	+6,1
Other basic chemicals	5,98	148,9	147,6	146,0	-1,1	-1,9
Compounded chemical products	6,51	120,5	122,8	122,8	0,0	+1,9
Pharmaceutical products	2,60	115,8	123,3	123,1	-0,2	+6,3
Other compounded chemical products	3,91	123,8	122,6	122,6	0,0	-1,0

ә 13 - Production Price Index for imported commodities according to group (concluded)

Base : 2000 = 100

Origin/Group	Weight	Indices			% - change between	
		Apr 2002	Mar 2003	Apr 2003	Mar 2003 and Apr 2003	Apr 2002 and Apr 2003
2.12 Rubber and plastic products	2,07	109,2	113,0	110,9	-1,9	+1,6
Rubber products	0,92	112,0	113,3	108,5	-4,2	-3,1
Plastic products	1,15	106,9	112,7	112,7	0,0	+5,4
2.13 Non-metallic mineral products	1,57	126,3	125,9	125,7	-0,2	-0,5
Glass and glass products	0,47	121,9	119,7	119,5	-0,2	-2,0
Other	1,10	128,4	128,6	128,4	-0,2	0,0
2.14 Basic metals	3,35	120,9	116,0	109,4	-5,7	-9,5
Ferrous	1,60	116,1	115,9	115,7	-0,2	-0,3
Non-ferrous	1,75	125,0	115,7	103,2	-10,8	-17,4
2.15 Metal products	2,09	133,1	134,3	133,0	-1,0	-0,1
Structural metal products	0,18	105,2	102,0	101,4	-0,6	-3,6
Other	1,91	135,6	137,3	135,9	-1,0	+0,2
2.16 Non-electrical machinery and equipment	17,02	126,2	127,9	127,5	-0,3	+1,0
General purpose machinery	6,50	130,6	130,9	131,5	+0,5	+0,7
Special purpose machinery	9,36	123,1	125,6	124,5	-0,9	+1,1
Household appliances	1,16	126,7	129,0	128,9	-0,1	+1,7
2.17 Office, accounting and computing machinery	5,18	115,8	104,9	104,6	-0,3	-9,7
2.18 Electrical machinery and apparatus	3,41	115,7	116,7	116,5	-0,2	+0,7
Electric motors, generators and transformers	0,73	101,4	101,4	101,4	0,0	0,0
Electricity distribution and control apparatus	1,23	114,4	116,5	116,5	0,0	+1,8
Insulated wire and cable	0,22	144,2	155,5	148,9	-4,2	+3,3
Other	1,23	120,4	119,0	119,6	+0,5	-0,7
2.19 Radio, television and communication equipment and apparatus	5,73	113,4	110,3	110,3	0,0	-2,7
2.20 Medical, precision and optical instruments	3,67	126,8	122,5	121,4	-0,9	-4,3
Medical appliances and instruments for measuring, checking, testing and navigating	3,05	126,9	122,1	121,1	-0,8	-4,6
Other, including watches and clocks	0,62	126,2	124,0	122,8	-1,0	-2,7
2.21 Transport equipment	14,93	130,5	129,6	130,3	+0,5	-0,2
Motor vehicles, parts and accessories	13,08	131,8	131,9	132,8	+0,7	+0,8
Motor vehicles	2,22	106,1	105,2	105,1	-0,1	-0,9
Bodies, trailers and semi-trailers	0,15	111,0	117,0	117,0	0,0	+5,4
Parts and accessories	10,71	136,6	136,9	138,0	+0,8	+1,0
Other transport equipment	1,85	118,9	110,2	109,8	-0,4	-7,7
2.22 Furniture	0,31	100,3	100,7	100,7	0,0	+0,4
2.23 Other manufactures	1,28	118,7	120,3	119,9	-0,3	+1,0
Electricity, Gas Steam and Water	-	-	-	-	-	-
3.1 Electricity	-	-	-	-	-	-
3.2 Gas, Steam and water	-	-	-	-	-	-

Base : 2000 = 100

Origin/Group	Weight	Indices			% change between	
		Apr 2002	Mar 2003	Apr 2003	Mar 2003 and Apr 2003	Apr 2002 and Apr 2003
groups	100,00	122,0	120,5	119,1	-1,2	-2,4
Agriculture, Forestry, Fishing and Mining	30,30	132,0	118,2	116,3	-1,6	-11,9
1.1 Agriculture	5,00	125,6	118,6	118,1	-0,4	-6,0
1.1.1 Food	4,89	122,6	114,4	113,9	-0,4	-7,1
Grain	2,03	174,1	173,6	173,6	0,0	-0,3
Sugar cane	-	-	-	-	-	-
Oil seeds	-	-	-	-	-	-
Vegetables and dried beans	0,44	100,0	100,0	100,0	0,0	0,0
Fruit	2,08	73,7	56,8	56,0	-1,4	-24,0
Meat	0,11	90,9	78,3	71,3	-8,9	-21,6
Milk and eggs	0,01	103,6	128,6	128,6	0,0	+24,1
Other	0,22	-	-	-	-	-
1.1.2 Other agriculture	0,11	164,0	174,0	174,3	+0,2	+6,3
1.2 Forestry	0,11	100,0	100,0	100,0	0,0	0,0
1.3 Fishing	0,18	122,8	136,6	135,2	-1,0	+10,1
1.4 Mining and quarrying	25,01	132,9	117,6	115,4	-1,9	-13,2
Coal	6,79	171,8	126,2	123,2	-2,4	-28,3
Metal ores	12,26	117,9	115,9	114,2	-1,5	-3,1
Other minerals	5,96	120,5	112,4	109,9	-2,2	-8,8
Manufacturing	69,70	117,7	121,5	120,3	-1,0	+2,2
2.1 Food	5,40	122,2	123,2	122,5	-0,6	+0,2
Meat	0,62	120,5	117,6	116,9	-0,6	-3,0
Fresh meat	0,20	110,9	106,2	104,7	-1,4	-5,6
Meat products	0,42	125,5	123,7	123,4	-0,2	-1,7
Fish and fish products	0,69	116,3	113,4	112,0	-1,2	-3,7
Fruit and vegetable products	1,41	116,0	114,1	113,3	-0,7	-2,3
Fats and oils	0,24	131,7	134,4	132,4	-1,5	+0,5
Milk products	0,19	114,5	118,0	118,9	+0,8	+3,8
Grain mill products	0,36	127,0	128,9	127,6	-1,0	+0,5
Sugar	1,38	162,5	174,0	173,9	-0,1	+7,0
Coffee and tea	0,03	120,4	127,1	127,1	0,0	+5,6
Other	0,48	113,2	122,7	123,0	+0,2	+8,7
2.2 Beverages	1,57	111,8	122,5	113,4	-7,4	+1,4
Alcoholic	1,44	112,8	124,4	114,5	-8,0	+1,5
Non-alcoholic	0,13	100,5	100,8	100,8	0,0	+0,3
2.3 Tobacco products	0,16	107,0	112,9	113,1	+0,2	+5,7
2.4 Textiles and made-up goods	1,38	144,4	153,6	153,6	0,0	+6,4
Spinning, weaving and finishing of textiles	0,96	159,6	171,2	171,2	0,0	+7,3
Other textiles	0,42	109,1	112,6	112,6	0,0	+3,2
2.5 Wearing apparel	0,65	115,2	111,9	111,9	0,0	-2,9
Knitted and crocheted fabrics and articles	0,13	115,2	115,9	115,9	0,0	+0,6
Wearing apparel	0,52	115,3	111,0	111,0	0,0	-3,7
Men's and boys' clothing	0,33	123,3	116,9	116,9	0,0	-5,2
Women's and girls' clothing	0,16	123,3	116,9	116,9	0,0	-5,2
Other, including articles of fur	0,03	100,2	101,4	101,4	0,0	+1,2
2.6 Leather and leather products	0,69	121,9	132,9	123,0	-7,4	+0,9
2.7 Footwear	0,12	124,3	128,8	124,6	-3,3	+0,2
2.8 Wood and wood products	0,84	140,3	155,9	156,5	+0,4	+11,5
Sawmilling and planing of wood	0,53	155,8	175,6	175,4	-0,1	+12,6
Products of wood, cork and plaiting materials	0,31	114,1	122,6	124,5	+1,5	+9,1
2.9 Paper, paper products and printing	3,70	109,5	102,1	100,1	-2,0	-8,6
Paper and paper products	3,24	110,7	102,2	99,4	-2,7	-10,2
Publishing and printing	0,46	101,8	102,4	105,7	+3,2	+3,8
2.10 Products of petroleum and coal	3,20	132,5	131,4	110,6	-15,8	-16,5
2.11 Chemicals and chemical products	9,41	121,0	121,0	121,9	+0,7	+0,7
Basic chemicals	6,68	119,5	120,9	123,2	+1,9	+3,1
Fertilizers	0,91	115,1	112,3	112,3	0,0	-2,4
Other basic chemicals	5,77	120,2	122,3	124,9	+2,1	+3,9
Compounded chemical products	2,73	124,2	120,5	118,4	-1,7	-4,7
Pharmaceutical products	0,36	126,3	126,5	124,5	-1,6	-1,4
Other compounded chemical products	2,37	124,3	120,0	117,8	-1,8	-5,2

a 14 - Production Price Index for exported commodities according to group (concluded)

Base : 2000 = 100

Origin/Group	Weight	Indices			% - change between	
		Apr 2002	Mar 2003	Apr 2003	Mar 2003 and Apr 2003	Apr 2002 and Apr 2003
2.12 Rubber and plastic products	1,02	124,2	130,2	128,0	-1,7	+3,1
Rubber products	0,51	143,1	149,4	145,1	-2,9	+1,4
Plastic products	0,51	104,4	110,2	110,2	0,0	+5,6
2.13 Non-metallic mineral products	0,87	109,8	114,8	115,4	+0,5	+5,1
Glass and glass products	0,23	116,2	114,0	114,0	0,0	-1,9
Other	0,64	107,7	115,2	116,0	+0,7	+7,7
2.14 Basic metals	22,75	119,8	124,0	124,4	+0,3	+3,8
Ferrous	10,75	127,0	134,9	133,1	-1,3	+4,8
Non-ferrous	12,00	113,3	114,2	116,6	+2,1	+2,9
2.15 Metal products	2,09	111,9	126,3	126,3	0,0	+12,9
Structural metal products	1,02	108,6	124,7	124,7	0,0	+14,8
Other	1,07	114,4	127,0	127,0	0,0	+11,0
2.16 Non-electrical machinery and equipment	5,61	112,0	123,2	123,1	-0,1	+9,9
General purpose machinery	2,25	107,6	116,3	116,2	-0,1	+8,0
Special purpose machinery	3,09	115,6	128,7	128,7	0,0	+11,3
Household appliances	0,27	110,5	119,7	119,7	0,0	+8,3
2.17 Office, accounting and computing machinery	0,52	100,0	100,0	100,0	0,0	0,0
2.18 Electrical machinery and apparatus	1,13	109,6	114,7	114,7	0,0	+4,7
Electric motors, generators and transformers	0,17	118,4	129,4	129,4	0,0	+9,3
Electricity distribution and control apparatus	0,23	106,9	115,3	115,3	0,0	+7,9
Insulated wire and cable	0,15	125,0	122,4	122,4	0,0	-2,1
Other	0,58	104,4	108,3	108,3	0,0	+3,7
2.19 Radio, television and communication equipment and apparatus	0,64	105,7	105,9	105,9	0,0	+0,2
2.20 Medical, precision and optical instruments	0,54	126,4	137,8	134,8	-2,2	+6,6
Medical appliances and instruments for measuring, checking, testing and navigating	0,46	129,2	142,8	139,3	-2,5	+7,8
Other, including watches and clocks	0,08	109,5	108,6	108,6	0,0	-0,8
2.21 Transport equipment	4,26	105,0	111,7	111,7	0,0	+6,4
Motor vehicles, parts and accessories	3,40	105,6	113,9	113,9	0,0	+7,9
Motor vehicles	1,16	100,0	101,0	101,0	0,0	+1,0
Bodies, trailers and semi-trailers	0,86	100,4	100,6	100,6	0,0	+0,2
Parts and accessories	1,38	113,6	133,5	133,5	0,0	+17,5
Other transport equipment	0,86	102,8	103,4	103,4	0,0	+0,6
2.22 Furniture	1,78	99,9	99,6	99,6	0,0	-0,3
2.23 Other manufactures	1,37	104,0	105,0	104,9	-0,1	+0,9
Electricity, Gas Steam and Water	-	-	-	-	-	-
3.1 Electricity	-	-	-	-	-	-
3.2 Gas, Steam and water	-	-	-	-	-	-

15 - Production Price Index for materials used in certain industries

Base : 2000 = 100

Industry	Indices			% - change between	
	Apr 2002	Mar 2003	Apr 2003	Mar 2003 and Apr 2003	Apr 2002 and Apr 2003
Building and construction	119,7	131,3	131,0	-0,2	+9,4
Building industries	117,7	130,3	130,4	+0,1	+10,8
Civil engineering	118,2	129,4	129,8	+0,3	+9,8
Mechanical engineering	113,2	126,2	126,1	-0,1	+11,4
Structural engineering	118,8	127,9	125,5	-1,9	+5,6

16 - Production Price Index for selected materials

Base : 2000 = 100

Type of materials	Indices			% - change between	
	Apr 2002	Mar 2003	Apr 2003	Mar 2003 and Apr 2003	Apr 2002 and Apr 2003
Al, auction prices, 18 types	189,0	185,2	179,0	-3,3	-5,3
Al, bituminous	115,4	108,9	117,1	+7,5	+1,5
Al, bituminous - for local sales	143,5	150,9	159,3	+5,6	+11,0
Cobbles, grade A	181,0	148,7	147,9	-0,5	-18,3
Cobbles, grade B	217,5	122,3	121,0	-1,1	-44,4
Large nuts, grade A	136,5	140,6	151,3	+7,6	+10,8
Large nuts, grade B	148,8	160,9	169,6	+5,4	+14,0
Small nuts, grade A	162,7	170,4	183,3	+7,6	+12,7
Small nuts, grade B	155,9	165,9	178,5	+7,6	+14,5
Peas, grade A	140,7	146,0	157,2	+7,7	+11,7
Peas, grade B	130,1	141,2	144,8	+2,5	+11,3
Paracite - for local sales					
Grade SP	100,9	100,9	100,9	0,0	0,0
Grade A	100,7	100,7	100,7	0,0	0,0
Wood products, excluding minewood	115,3	125,1	126,8	+1,4	+10,0
Pine, kiln dried	141,9	165,8	169,6	+2,3	+19,5
Paper, newsprint	146,4	155,0	166,4	+7,4	+13,7
Offset paper	135,2	148,0	147,7	-0,2	+9,2
Peas, corrugated cardboard	123,8	127,5	129,5	+1,6	+4,6
Leather, bovine hide	161,2	140,8	140,9	+0,1	-12,6
Petroleum crude	110,8	116,6	117,6	+0,9	+6,1
Synthetic	121,5	132,9	134,9	+1,5	+11,0
Synthetic - Local	121,5	132,9	134,9	+1,5	+11,0
Plastics and tubes	125,6	141,7	121,9	-14,0	-2,9
Plastic bottles	113,1	133,3	133,3	0,0	+17,9
Plastic, bulk forms	127,0	133,6	135,1	+1,1	+6,4
Sulphuric acid	114,2	117,3	117,3	0,0	+2,7
Plastics	127,6	140,1	141,0	+0,6	+10,5
Thermal insulation materials	122,1	136,6	136,6	0,0	+11,9
Polyurethane	122,1	136,6	136,6	0,0	+11,9
Organic-chemical building materials	116,8	125,4	126,0	+0,5	+7,9
Waterproofing	125,3	138,1	138,4	+0,2	+10,5
Resilient floor coverings	129,2	148,2	148,3	+0,1	+14,8
Gasol, 93 octane - Coast	131,0	135,5	133,3	-1,6	+1,8
- Witwatersrand	131,0	135,5	133,3	-1,6	+1,8
Gasol oil - Coast	128,8	133,0	138,5	+4,1	+7,5
- Witwatersrand	128,8	133,0	138,5	+4,1	+7,5
Gasformer oil	161,6	179,2	176,6	-1,5	+9,3
Asphaltenes	126,8	140,6	140,6	0,0	+10,9
Modified Bitumen sheeting	121,9	123,6	123,6	0,0	+1,4
Asphaltenes and Acrylic Emulsion	117,3	125,7	125,7	0,0	+7,2
Bricks - Stock	113,1	122,1	124,2	+1,7	+9,8
- Face	118,7	135,5	138,9	+2,5	+17,0
Concrete building blocks	118,5	128,8	130,2	+1,1	+9,9
Concrete	127,1	148,6	148,6	0,0	+16,9
Concrete	114,9	121,3	121,3	0,0	+5,6
Regulated crushed stone	116,5	141,3	141,3	0,0	+21,3
Binary and extended cement	124,0	144,3	144,5	+0,1	+16,5
Granular stone, cut and sawn	108,2	109,8	109,9	+0,1	+1,6
Plaster, for building industry	141,7	128,5	128,5	0,0	-9,3
Plasterboard	129,5	129,5	129,5	0,0	0,0
Plaster in ceiling tiles-gypsum	123,6	123,6	123,6	0,0	0,0
Plaster in ceiling tiles-masonite	132,7	148,5	148,5	0,0	+11,9
Profiled aluminium roofing	150,2	130,2	127,9	-1,8	-14,8
Profiled aluminium section	151,1	151,1	151,1	0,0	0,0

Base : 2000 = 100

Type of materials	Indices			% - change between	
	Apr 2002	Mar 2003	Apr 2003	Mar 2003 and Apr 2003	Apr 2002 and Apr 2003
Plumbing	122,1	123,3	119,9	-2,8	-1,8
E-Adhesive sheeting	118,6	118,6	118,6	0,0	0,0
Joint Sealants	118,6	129,4	129,4	0,0	+9,1
Window doors	117,2	138,7	138,7	0,0	+18,3
Window sash	112,9	115,9	116,4	+0,4	+3,1
Window sash	108,6	114,9	115,4	+0,4	+6,3
Ceramic and encaustic wall and floor tiles and mosaics	104,0	107,7	107,8	+0,1	+3,7
Building materials	126,3	133,4	133,4	0,0	+5,6
Conditioning materials	126,3	133,4	133,4	0,0	+5,6
Rigid insulation - Preformed pipe sections	110,2	120,0	120,0	0,0	+8,9
- Batten board	120,4	130,3	130,3	0,0	+8,2
- Mattresses	119,1	129,7	129,7	0,0	+8,9
- Ceiling insulation	104,5	115,6	115,6	0,0	+10,6
Plaster, porcelain	114,5	141,5	133,9	-5,4	+16,9
Partitions, glass	111,4	131,9	132,0	+0,1	+18,5
Plates, mild steel	123,0	142,2	142,2	0,0	+15,6
Plates, mild steel	119,4	134,6	134,6	0,0	+12,7
Structural steel, unworked	126,5	144,4	144,4	0,0	+14,2
Structural steel products	120,4	147,2	147,2	0,0	+22,3
Reinforcing steel	135,0	147,8*	155,6	+5,3	+15,3
Rebar, mild steel	115,4	145,8	145,8	0,0	+26,3
Rebar, uncoated	126,9	145,0	145,0	0,0	+14,3
Rebar, galvanized	115,4	145,8	145,8	0,0	+26,3
Rebar plate	116,5	130,0	130,0	0,0	+11,6
Steel tubes, pipes and fittings	108,2	108,1	108,1	0,0	-0,1
Steel, basic forms	136,0	125,3	126,1	+0,6	-7,3
Aluminum - Anodising	105,3	113,7	113,7	0,0	+8,0
- Basic forms	150,7	117,7	109,7	-6,8	-27,2
- Extruded products	128,4	125,9	124,6	-1,0	-3,0
- Sheet piling	122,5	122,7	114,3	-6,8	-6,7
Rings, ball and roller	151,3	157,4	157,8	+0,3	+4,3
Structural contracting materials	119,0	126,5	126,3	-0,2	+6,1
Construction machinery (excluding trucks)	119,3	118,4	116,1	-1,9	-2,7
Trucks	123,7	141,7	141,7	0,0	+14,6
Trucks and buses	123,4	137,8	137,8	0,0	+11,7
Oil engineering plant	136,1	146,9	146,9	0,0	+7,9
Steel for the civil engineering industry	119,3	136,0	137,2	+0,9	+15,0
Engineering machinery	104,5	113,5	113,5	0,0	+8,6
Consumer industry's indices:					
Natural rubber (imported)	89,2	100,7	107,1	+6,3	+20,1
Carbon black - N774 (local)	100,0	105,0	111,3	+6,0	+11,3
- N660	100,0	105,0	111,3	+6,0	+11,3
Chlorinated polyethylene resin (imported)	145,7	144,0	144,0	0,0	-1,2
Synthetic rubber - 1502	117,4	164,0	155,1	-5,4	+32,1
- 1712	118,6	159,0	150,8	-5,2	+27,2
Polybutadiene	134,3	178,5	164,9	-7,6	+22,8
Processing oil	100,0	94,7	94,7	0,0	-5,3
Lead wire	100,0	94,0	94,0	0,0	-6,0
Paint (Retail price)	115,1	131,7	131,7	0,0	+14,4
Building boards	120,7	133,6	133,9	+0,2	+10,9
Concrete roof tiles	136,3	158,0	158,0	0,0	+15,9
Concrete cement roof sheet	123,4	147,9	147,9	0,0	+19,9
Coated profiled GMS sheeting (roofing)	102,5	145,8	145,8	0,0	+42,2
Coated Meranti	100,0	88,5	87,4	-1,2	-12,6
Glazed tiles flooring	111,2	122,3	129,6	+6,0	+16,5
Glazed sheeting (flooring)	105,3	111,6	118,3	+6,0	+12,3
Wool needle punch carpeting	120,5	124,0	124,0	0,0	+2,9
Door locks	112,4	120,8	120,8	0,0	+7,5
Doors	118,5	140,7	140,7	0,0	+18,7
Door lock set	130,6	169,6	169,6	0,0	+29,9
Aluminum lever furniture	132,1	148,0	148,0	0,0	+12,0
Aluminum steel sections	104,9	116,0	116,0	0,0	+10,6
In stainless steel products, flat rolled	100,5	138,3	138,3	0,0	+37,6
Glazed ceramic tiles	122,4	122,4	122,4	0,0	0,0
Glaze adhesives	123,4	134,5	142,6	+6,0	+15,6
Pipes	112,3	119,1	119,1	0,0	+6,1
Concrete pipes	120,6	129,3	129,3	0,0	+7,2
Washbasin and basin	105,8	114,6	114,6	0,0	+8,3
W.C. closet system (WC's)	103,0	108,3	108,3	0,0	+5,1
Water Piping	134,2	129,2	129,2	0,0	-3,7
Decorative paints	127,6	148,4	152,0	+2,4	+19,1
Decorative paints	126,0	137,1	140,6	+2,6	+11,6

Reinforcing steel

	Jan	Feb	Mar
Reinforcing steel	147,8	147,8	147,8

17 - Seasonally adjusted group and product indices of the Production Price Index

Description	Weights	Indices					
		Nov 2002	Dec 2002	Jan 2003	Feb 2003	Mar 2003	Apr 2003
l commodities for consumption in South Africa	100,00	127,9	127,3	126,6	126,5	126,6	125,8
Locally produced commodities	73,00	126,7	127,1	126,1	126,4	126,7	126,2
Imported commodities	27,00	130,2	127,9	127,0	126,2	125,5	124,6
Output of South African industry							
Total output	100,00	125,7	125,7	124,9	124,9	125,1	124,2
For South African consumption	100,00	126,7	127,1	126,1	126,4	126,7	126,2
Agriculture, Forestry and Fishing	12,50	138,6	139,1	130,9	125,2	126,2	122,5
Tobacco and Beverages	5,76	118,9	119,8	121,0	121,6	122,4	124,3
Textiles, Clothing and Footwear	5,39	119,8	120,6	121,1	121,4	122,2	122,5
Machinery and Transport equipment	12,50	120,7	121,3	121,8	122,4	122,9	123,3
Mining, Electricity, Gas and Water	9,96	100,9	102,5	102,0	102,3	101,8	102,8
Basic metals and Metal products	7,78	126,2	125,6	124,1	124,7	124,7	124,1
Food	12,44	144,1	144,5	143,1	144,2	143,6	142,5
Total Manufacturing	77,54	128,1	128,4	128,4	129,3	130,1	129,7

ADDITIONAL INFORMATION

EXPLANATORY NOTES

- Introduction** 1 This publication contains results of the monthly Surveys of Prices of Locally Produced Commodities (which are locally sold or exported) and Imported Commodities. These indices for commodities are classified to designated industries of the South African economy. They are calculated on the base 2000=100.
- Scope of the survey** 2 The indices are compiled on a gross industry basis, i.e. each index relates to those articles, which are produced, imported and exported by the designated industries of the South African economy. Selling prices are collected from manufacturers, importers and Exporters.
- Classification** 3 The 1993 edition of the Standard Industrial Classification of all Economic Activities (SIC), Fifth edition, Report No. 09-90-02, was used to classify the statistical units in the survey. The SIC is based on the 1990 International Standard Industrial Classification of all Economic Activities (ISIC) with suitable adaptations for local conditions. Statistics in this publication are presented at SIC subdivision level.
- 4 This publication presents information which measures changes in prices of products, that are produced, imported or exported by establishments (branches). It excludes semi-processed products, which have been produced by the establishment within the manufacturing division and carried over to other establishments within the manufacturing division for further processing.
- Statistical** 5 The statistical unit is the establishment (branch), which is the smallest economic unit that functions as a separate entity. Each statistical unit is classified to an industry according to the classification of the products that the unit manufactures, imports or exports.
- Survey methodology design** 6 Different phases of sampling takes place. Firstly, a sample of products, based on the information collected through the Manufacturing census of 1996 and 1995/96 information on imports and exports received from Customs and Excise, SARS is designed and drawn. An indicator product is selected purposively within each product group. To be selected, a product should be part of the top 80% of products manufactured, imported or exported in that product group. Furthermore, it must be possible to obtain price quotations for the relevant product during the whole year. The sample of indicator products is revised every five years at which stage the weights of the indicator products/groups are also revised.
- This survey is collected by mail from a sample of approximately 3 500 manufacturers, 3 500 exporters and 3 500 importers. The indices are based on producer prices at the point of production in the case of commodities produced in South Africa, and wholesale prices “ex-warehouse”, in the case of imported commodities. Prices “delivered” or “free on rail” are accepted if this is the normal basis of quotation.
- Currently, an average of 20 000 price quotations are collected each month from approximately 5 500 outlets by means of 6 000 questionnaires. The indices are based on retail trade and service prices.
- Weighting basis** 7 Price information refers to the first seven days of the relevant month, except in the case of mining and most of the agricultural products, where it refers to the average price for the month. The average price of imported crude petroleum, used in the compilation of the import component of the PPI, is calculated as the value (in Rands) divided by the quantity of imported crude petroleum for the relevant month. **The prices of all items exclude Value Added Tax (VAT).**

- hting** **8** The index is a fixed weights index as the weights are determined in the base period and they do not change until the next base period. The commodities directly represented in the index were selected on the basis of the values of sales of products –
- produced during the 1995-96 financial year for locally produced commodities;
 - exported during 1996; and
 - imported during 1996.

These commodities constitute approximately 80 per cent of the total value of production/imports/exports during the relevant year as indicated above. Weights were allocated to each product in accordance with the value of sales for each item during the 1995/96 financial year. The basis on which the weighting structure of each main PPI component, indicated in the tables published in this statistical release, was calculated, is indicated in table C.

Table C– Basis on which the weighting structure of each PPI table is based

Number of table in this statistical release	PPI component	Basis for weighting structure
Table 10	Commodities for South African consumption	Sales value of South African production minus exports, plus imports
Table 11	Total output of South African industry groups	Sales value of South African production
Table 12	Output of South African industry groups for South African consumption	Sales value of South African production minus exports
Table 13	Imported commodities	Sales value of imported commodities
Table 14	Exported commodities	Sales value of exported commodities
Table 15	Materials used in certain industries	Value of materials used

- ssing of** **9** The prices that are quoted for the different products are checked. If the price difference between two successive periods are outside the specified range of increase (+10%) or decreases (-5%), the current price levels are confirmed with the relevant respondents through a telephone inquiry.

- lating**
uct price
es **10** Price relatives are calculated for each product per respondent by dividing the current prices by the previously quoted price. The price relative for each product is calculated by means of the geometric mean of the price relatives for each respondent. This price relative for each product is then applied to the product index for the previous month in order to obtain a product index for the relevant month.

- lating**
o price
es **11** Group price indices are calculated by weighting product indices with the relevant product weight, according to each group's (local, import, export) weighting structure, using the Laspeyres index formula.

- ributions**
pecific
acts to the
PPI **12** The monthly (annual) contribution of a specific product or group of products to the total PPI is calculated by multiplying the weight of this product or group of products with the monthly (annual) change in the index for this product or group of products, divided by the index for 'All groups'.

onal stment	13	Seasonal fluctuations in a time series are those fluctuations, which usually tend to occur at about the same time and with the same magnitude each year. This may be the result of climatic influences or other social and commercial habits (e.g. the price of bread, which was previously revised in October of each year). In the analysis of time series, Stats SA makes use of the X-11 technique, which was developed by the American Bureau of Census. The seasonally adjusted indices for the latest month are calculated with seasonal factors, which are based on a time series analysis of information up to and including the previous month. Thus these indices change every time that another month is added. In the past Stats SA did not revise the seasonal adjusted indices on a monthly basis, but revised the historical seasonally adjusted indices for a year, annually in January of each year. This methodology caused diversion between the annual changes in the seasonally adjusted and actual indices. After thorough investigations it was decided that in future the latest seasonally adjusted indices will be published every month. This will mean that the seasonally adjusted figures will not have a fixed base such as the figures of the time series for which seasonally adjustments were done. It also implies that the values of the seasonally adjusted indices will be changing on a monthly basis.										
bility of ates	14	Inaccuracies may occur because of imperfections in reporting by enterprises and errors made in collection and processing of the data. Inaccuracies of this kind are referred to as non-sampling errors. Every effort is made to reduce non-sampling errors to a minimum by careful designing the questionnaires, editing data and efficient operating procedures.										
ed cations	15	Users may also wish to refer to the following publications, which are available from Stats SA - <ul style="list-style-type: none"> • Bulletin of Statistics; and • SA Statistics. 										
ublished tics	16	In some cases, Stats SA can also make available formation, which is not published. This information can be made available in one or more of the following ways: computer printout, diskette or CD. Generally a fee is levied for providing unpublished information.										
ools and eviations	17	<table border="0" style="width: 100%;"> <tr> <td style="width: 30%;">Stats SA</td> <td>Statistics South Africa</td> </tr> <tr> <td>..</td> <td>not available</td> </tr> <tr> <td>-</td> <td>nil or not applicable</td> </tr> <tr> <td>*</td> <td>revised since previous publication</td> </tr> <tr> <td>avg</td> <td>average</td> </tr> </table>	Stats SA	Statistics South Africa	..	not available	-	nil or not applicable	*	revised since previous publication	avg	average
Stats SA	Statistics South Africa											
..	not available											
-	nil or not applicable											
*	revised since previous publication											
avg	average											

SSARY

Annual percentage change	The annual percentage change is the change in the index of the relevant month of the current year compared with the index of the same month in the previous year expressed as a percentage and is generally accepted as the yardstick of PPI inflation.
Average annual percentage change	The average annual percentage change is the change in the average index of one year compared with the average index of the previous year expressed as a percentage.
Contribution of specific products to total PPI	The monthly (annual) contribution of a specific product or group of products to the total PPI is calculated by multiplying the weight of the index with the monthly (annual) change of the index divided by the index for "All Items".
Establishment	An establishment (branch) is the smallest economic unit that functions as a separate entity.
Indicator products	Indicator products are those products whose sale value represent 80% of the total value of sales (turnover) in an industrial subgroup.
Monthly percentage change	The monthly percentage change is the change in the index of the relevant month compared to the index of the previous month expressed as a percentage.
Weights	The weights are the relevant importance of the indicator products in that subgroup. The weight of a product is calculated by dividing the actual value of sales of the relevant indicator product by the total value of sales in that subgroup.

more information

Stats SA publishes approximately 300 different releases each year. It is not economically viable to produce them in more than one of South Africa's eleven official languages. Since the releases are used extensively, not only locally but also by international economic and social-scientific communities, Stats SA releases are published in English only.

Stats SA has copyright on this publication. Users may apply the information as they wish, provided that they acknowledge Stats SA as the source of the basic data wherever they process, apply, utilise, publish or distribute the data: and also that they specify that the relevant application and analysis (where applicable) result from their own processing of data.

Advance release calendar

An advance release calendar is disseminated on <http://www.statssa.gov.za>

Stats SA products

A complete set of Stats SA publications is available at the Stats SA Library and the following libraries -

National Library of South Africa, Pretoria Division
National Library of South Africa, Cape Town Division
Natal Society Library, Pietermaritzburg
Library of Parliament, Cape Town
Bloemfontein Public Library
Johannesburg Public Library
Eastern Cape Library Services, King William's Town
Central Regional Library, Polokwane
Central Reference Library, Nelspruit
Central Reference Collection, Kimberley
Central Reference Library, Mmabatho

Stats SA also provides a subscription service.

Electronic services

A large range of data are available via on-line services, diskette and computer printouts. For more details about our electronic data services, contact (012) 310 8600/8390/8351/4892/8496/8095.

You can visit us on the Internet at: <http://www.statssa.gov.za>

Enquiries

Telephone number: (012) 310 8600/8390/8351/4892/8496/8095 (user enquiries)
(012) 310 8421/170/077 (technical enquiries)
(012) 310 8161 (publishing)
(012) 310 8490 (library)

Fax number: (012) 328 3932

e-mail: ppi@statssa.gov.za

Postal address: Private Bag x44, Pretoria, 0001

Produced by Stats SA