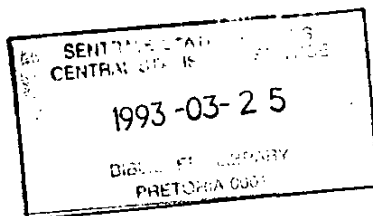


Biblioteek

LIBRARY COPY



REPUBLIEK VAN SUID-AFRIKA
REPUBLIC OF SOUTH AFRICA



SENTRALE
STATISTIEKDIENS
CENTRAL
STATISTICAL SERVICE

STATISTICAL NEWS RELEASE
STATISTIESE NUUSBERIG

P0141.1

CONSUMER PRICE INDEX -
FEBRUARY 1993

VERBRUIKERSPRYSINDEKS -
FEBRUARIE 1993

DATE: 24 MARCH 1993
DATUM: 24 MAART 1993
EMBARGO/SPERTYD: 10:00

SUMMARY

South Africa's inflation rate for February 1993, as measured by the Consumer Price Index, is 9,0%, which is 0,7 of a percentage point lower than the corresponding rate for January 1993 (9,7%). However, the seasonally adjusted index for February 1993 showed a monthly increase of 0,4%.

The main contributions to the monthly (i.e. February 1993 compared to January 1993) percentage increase of 0,3% in the non-seasonally adjusted index are made by increases in the price indices for food (0,1 of a percentage point), transport (0,1 of a percentage point) and a general increase in the prices of all other items (0,1 of a percentage point).

The monthly increase of 0,3% in the price index for food for February 1993, is mainly due to increases in the price indices for meat (0,4%), fish and other seafood (1,4%), coffee, tea and cocoa (1,3%) and "other" food (0,9%). These increases were slightly counteracted by decreases in the price indices for fruit and nuts (-0,2%) and vegetables (-0,5%).

A relatively large monthly increase occurred in the price index for non-alcoholic beverages (5,3%). The increase of 0,3% in the price index for transport, is mainly due to price increases in vehicles (0,5%) and running cost (0,4%).

Regarding the Consumer Price Index for the various urban areas, the largest annual price increases occurred in the Pietermaritzburg area (11,1%), while the smallest price increases occurred in the OFS Gold Fields (7,8%).

The Consumer Price Index for pensioners shows an annual percentage change of 10,0% for February 1993. This is 0,6 of a percentage point lower than the corresponding rate of 10,6% for January 1993.

The food inflation particulars of chainstores and other retailers (in Table 7), show increases of 9,0% and 8,7% respectively over the past 9 months.

OPSOMMING

Suid-Afrika se inflasiekoers vir Februarie 1993, soos gemeet aan die Verbruikersprysindeks, is 9,0%, wat 0,7 van 'n persentasiepunt laer is as die ooreenstemmende koers vir Januarie 1993 (9,7%). Die seisoensaangepaste indeks vir Februarie 1993 toon egter 'n maandelikse styging van 0,4%.

Die belangrikste bydraes tot die maandelikse (d.i. Februarie 1993 vergeleke met Januarie 1993) persentasiestyging van 0,3% in die nie-seisoensaangepaste indeks is gelewer deur stygings in die prysindekse vir voedsel (0,1 van 'n persentasiepunt), vervoer (0,1 van 'n persentasiepunt) en 'n algemene styging in die pryse van alle ander items (0,1 van 'n persentasiepunt).

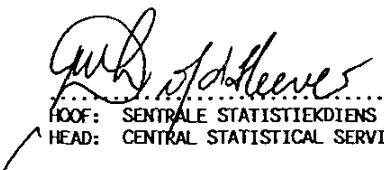
Die maandelikse styging van 0,3% in die prysindeks vir voedsel vir Februarie 1993, is hoofsaaklik teweeggebring deur stygings in die prysindekse vir vleis (0,4%), vis en ander seekos (1,4%), koffie, tee en kakao (1,3%) en "ander" voedsel (0,9%). Hierdie stygings is effens teengewerk deur dalings in die prysindekse vir vrugte en neute (-0,2%) en groente (-0,5%).

'n Relatief groot maandelikse styging het voorgekom in die prysindeks vir nie-alkoholiese drank (5,3%). Die toename van 0,3% in die prysindeks vir vervoer, is hoofsaaklik teweeggebring deur prysstygings in voertuie (0,5%) en lopende koste (0,4%).

Wat die Verbruikersprysindeks vir die verskillende stedelike gebiede betref, het die grootste jaarlikse prysstygings voorgekom in die Pietermaritzburggebied (11,1%), terwyl die kleinste prysstygings voorgekom het in die OVS-goudvelde (7,8%).

Die Verbruikersprysindeks vir pensionarisse toon 'n jaarlikse persentasieverandering van 10,0% vir Februarie 1993. Dit is 0,6 van 'n persentasiepunt laer as die ooreenstemmende koers van 10,6% vir Januarie 1993.

Die voedselinflasiebesonderhede van kettingwinkels en ander kleinhandelaars (in Tabel 7), toon toenames van onderskeidelik 9,0% en 8,7% oor die afgelope 9 maande.


HOOF: SENTRALE STATISTIEKDIENS
HEAD: CENTRAL STATISTICAL SERVICE

NAVRAE:		ENQUIRIES:	
PRETORIA	Tel. (012) 310-8911 Private Sak X44, Pretoria, 0001 Faks: 3108500 3108501	PRETORIA	Tel. (012) 310-8911 Private Bag X44, Pretoria, 0001 Fax: 3108500 3108501
BLOEMFONTEIN	(051) 477767	KEMPTON PARK	(011) 3943420/1
DURBAN	(031) 3053904	KIMBERLEY	(0531) 33965
KAAPSTAD/CAPE TOWN	(021) 4612098	KLERKSDORP	(018) 4624008
		NELSPRUIT	(01311) 52455/6
		PIETERSBURG	(01521) 71609
		PORT ELIZABETH	(041) 523801/2

EXPLANATORY NOTES

1 GENERAL

- 1.1 Price information refers to the first seven days of the relevant month.
- 1.2 The Consumer Price Indices relating to different urban areas as shown in Table 4 do not permit interurban comparison of price levels or living costs. The indices do not indicate whether it is more expensive to live in one city than in another. The indices indicate for each urban area, independently of any of the other urban areas, the price changes which have taken place from time to time.
- 1.3 Value Added Tax (VAT) is included in general in the prices of all items on which VAT is applicable.
- 1.4 A more comprehensive description of the weighting system, seasonal adjustment, price collection methodology, etc., appears in the brochure "Inflation" as well as in the notes of Chapter 3 of the Bulletin of Statistics.

2 CONSUMER PRICE INDEX
ALL ITEMS (HISTORIC)
GST EXCLUDED

The course of the Consumer Price Index excluding GST since 1990, was not recalculated as the rate and scope of GST remained unchanged during the period to September 1991. Such a recalculation would, on theoretical grounds, possibly have resulted in small and insignificant differences in the indices, but was not carried out for practical reasons. From October 1991 the CPI excluding VAT is, however, calculated directly. The month to month changes in the Consumer Price Indices including and excluding VAT will agree to a large extent except when the rate or scope of the tax are changed, as has happened in October 1991 with the introduction of VAT.

VERDUIDELIKENDE OPMERKINGS

1 ALGEMEEN

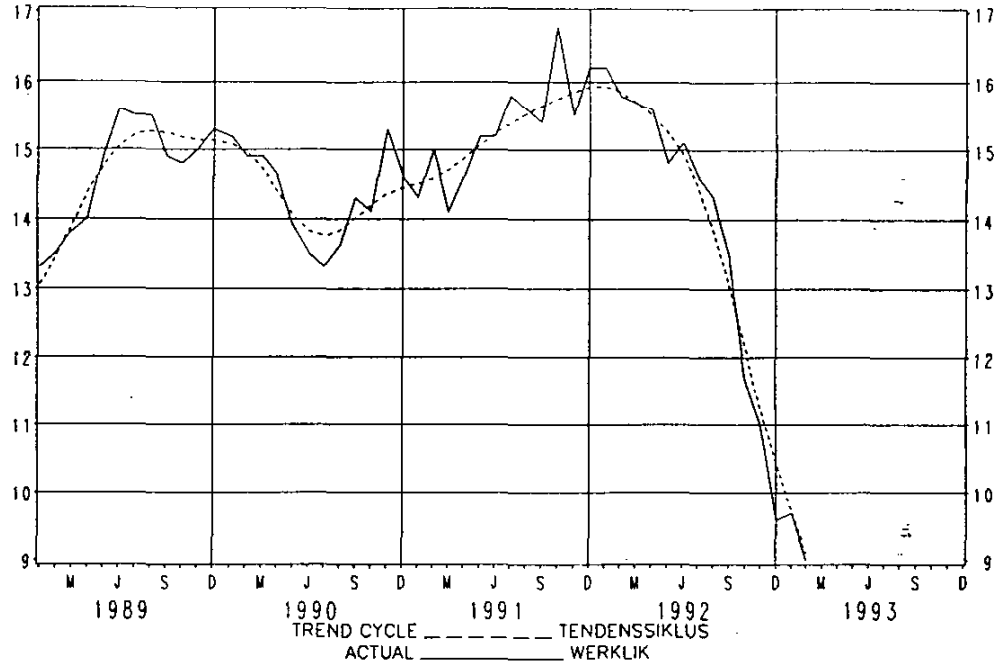
- 1.1 Alle prysinligting het betrekking op die eerste sewe dae van die betrokke maand.
- 1.2 Die Verbruikersprysindekse ten opsigte van verskillende stedelike gebiede soos weergegee in Tabel 4 laat nie tussenstedelike vergelyking van pryspeile of lewenskoste toe nie. Die indeks toon nie of dit dunder is om in een stad as in 'n ander te woon nie. Die indekse toon vir elke stedelike gebied, onafhanklik van die ander stedelike gebiede, die prysveranderings wat van tyd tot tyd plaasgevind het.
- 1.3 Belasting op Toegevoegde Waarde (BTW) is deurgaans ingesluit by die pryse van alle items waarop BTW van toepassing is.
- 1.4 'n Meer omvattende beskrywing van die beswaringstelsel, seisoensaanpassing, prysinsamingsmetodiek, ens., verskyn in die brosjure "Inflasie" asook in die opmerkings van Hoofstuk 3 van die Bulletin van Statistieke.

2 VERBRUIKERSPRYSINDEKS
ALLE ITEMS (HISTORIES)
AVB UITGESLUIT

Die verloop van die Verbruikersprysindeks sonder AVB sedert 1990 is nie herbereken nie aangesien die koers en bestek van AVB gedurende die tydperk tot September 1991 nie verander het nie. Sodanige herberekening sou op grond van teoretiese oorwegings moontlik klein en onbeduidende verskille in bostaande indekse tot gevolg gehad het, maar dit is vir praktiese redes nie uitgevoer nie. Vanaf Oktober 1991 word die VPI sonder BTW egter direk bereken. Die maand tot maand veranderings in die Verbruikersprysindekse met en sonder BTW sal grootliks ooreenstem behalwe wanneer die koers of bestek van die belasting verander, soos in Oktober 1991 met die instelling van BTW gebeur het.

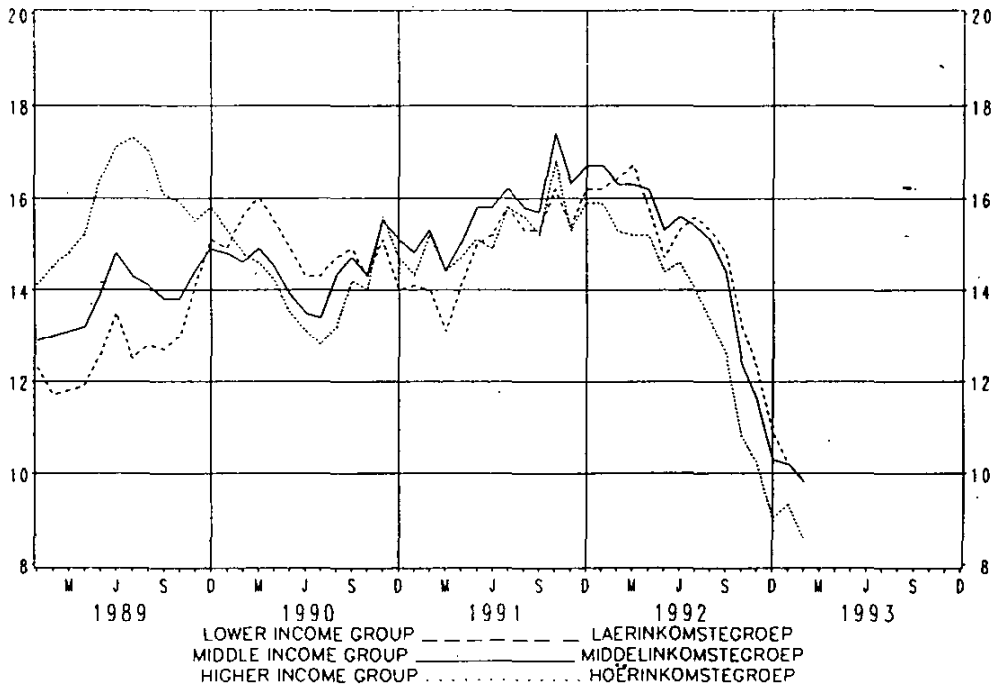
CONSUMER PRICE INDEX
ANNUAL CHANGE
PERCENTAGE

VERBRUIKERSPRYSINDEKS
JAARLIKSE VERANDERING
PERSENTASIE



ANNUAL CHANGE
PERCENTAGE

JAARLIKSE VERANDERING
PERSENTASIE



MONTHLY CHANGE
SEASONALLY ADJUSTED
PERCENTAGE

MAANDELIKSE VERANDERING
SEISOENSAANGEPAS
PERSENTASIE

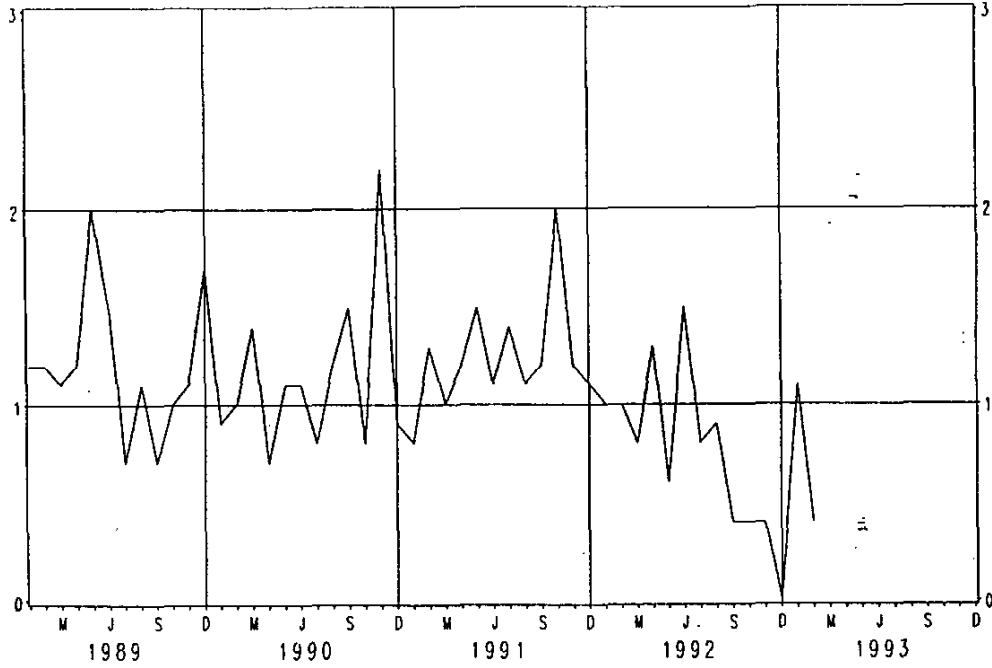


TABLE 1 INCOME GROUP INDICES AND PERCENTAGE CHANGE

TABEL 1 INKOMSTEGROEPINDEKSE EN PERSENTASIEVERANDERING

BASE - BASIS: 1990 = 100

	Feb. 1993	Jan. 1993	Feb. 1992	Change compared with - Verandering vergeleke met -		
				Jan. 1993		Feb. 1992
				Actual Werklik	Seasonal- ly ad- justed Seisoens- aangepas	Actual Werklik
Lower income group Laerinkomstegroep	138,2	137,7	125,9	+0,4	+0,4	+9,8
Middle income group Middelinkomstegroep	139,4	138,9	127,0	+0,4	+0,4	+9,8
Higher income group Hoerinkomstegroep	136,7	136,4	126,0	+0,2	+0,2	+8,5
All income groups Alle inkomstegroepe	137,6	137,2	126,2	+0,3 ¹⁾	+0,4 ¹⁾	+9,0
Food only Slegs voedsel	159,2	158,7	139,6	+0,3	+0,9	+14,0
All items excluding food Alle items uitge- sonderd voedsel	132,4	132,0	122,9	+0,3	+0,3	+7,7
All income groups (VAT EXCLUDED) Alle inkomstegroepe (BTW UITGESLUIT)	135,9	135,5	124,9	+0,3 ¹⁾	+0,4 ¹⁾	+8,8

1) On theoretical grounds and due to rounding off, these rates of change can differ.
1) Om teoretiese oorewegings en weens afronding kan hierdie veranderingskoerse verskil.

TABLE 2 EFFECT OF PRICE CHANGES ON THE CONSUMER PRICE INDEX - ALL INCOME GROUPS

TABEL 2 UITWERKING VAN PRYSVERANDERING OP DIE VERBRUIKERSPRYSINDEKS - ALLE INKOMSTEGROEPE

	Contribution Bydrae	
food	+0,1	Voedsel
transport	+0,1	Vervoer
All other items	+0,1	Alle ander items
All items	+0,3	Alle items

BASE - BASIS: 1990 = 100

TABEL 3 GROEP INDEXES - WEIGHTED AVERAGE
OF THE PRINCIPAL URBAN AREAS

	Feb. 1993	Jan. 1993	Feb. 1992	Percentage change compared with - Persentasieverandering vergeleke met -		Weights Gewigte
				Jan. 1993	Feb. 1992	
All items	137.6	137.2	126.2	+0.3	+9.0	100.00
Lower income group	138.2	137.7	125.9	+0.4	+9.8	19.42
Middle income group	139.4	138.9	127.0	+0.4	+9.8	24.09
Higher income group	136.7	136.4	126.0	+0.2	+8.5	56.50
Commodities	144.3	143.8	129.5	+0.3	+11.4	57.92
Services	129.1	128.7	121.8	+0.3	+6.0	42.08
All items, excluding housing	145.3	144.9	130.1	+0.3	+11.7	79.46
All items, excluding food	132.4	132.0	122.9	+0.3	+7.7	81.36
Food	159.2	158.7	139.6	+0.3	+14.0	18.64
Lower income group	157.7	157.2	138.6	+0.3	+13.8	25.16
Middle income group	159.8	159.1	139.7	+0.4	+14.4	20.85
Higher income group	159.6	159.3	140.0	+0.2	+14.0	15.45
Processed	150.3	149.3	133.1	+0.7	+12.9	11.69
Unprocessed	166.3	166.6	145.5	-0.2	+14.3	6.95
Grain products	150.5	150.3	129.3	+0.1	+16.4	2.92
Meat	151.3	150.7	146.4	+0.4	+3.3	6.17
Fish and other seafood	149.9	147.8	131.7	+1.4	+13.8	0.70
Milk, cheese and eggs	153.9	153.3	128.5	+0.4	+19.8	2.28
Fats and oils	150.9	150.5	137.4	+0.3	+9.8	0.87
Fruit and nuts	265.3	265.8	183.9	-0.2	+44.3	1.18
Vegetables	176.5	177.4	145.1	-0.5	+21.6	1.88
Sugar	128.2	126.6	112.2	+1.3	+17.4	0.48
Coffee, tea and cocoa	148.1	146.8	133.6	+0.9	+10.9	0.59
Other						1.57

TABEL 3 GROEPIJNDEKSE - BESWAARDE GEMIDDELDE VAN
 DIE VERNAAMSTE STEDELIKE GEBIEDE (AFGESLUIT)

BASE - BASIS: 1990 = 100

	Feb., 1993		Jan., 1993		Feb., 1992		Percentage change compared with - persentasieverandering vergeleke met -		Weights - Gewigte	
	1993	1993	1993	1993	1992	1992	Jan., 1993	Feb., 1992		
Non-alcoholic beverages	151.9	144.2	125.8	+5.3	+20.7	0.69				Nie-alkoholiese drank
Alcoholic beverages	150.1	150.1	137.4	0.0	+9.2	0.96				Alkoholiese drank
Cigarettes, cigars and tobacco	152.3	151.5	134.4	+0.5	+13.3	1.21				Sigarette, sigare en tabak
Clothing and footwear	126.5	126.2	119.0	+0.2	+6.3	7.02				Klerasie en skoeisel
Clothing	126.7	126.4	118.3	+0.2	+7.1	5.87				Klerasie
Footwear	124.4	123.9	121.0	+0.4	+2.8	1.15				Skoeisel
Housing	106.2	106.1	109.7	+0.1	-3.2	20.54				Behuising
Fuel and power	139.3	138.7	120.9	+0.4	+15.2	3.26				Brandstof en krag
Furniture and equipment	123.6	123.5	115.8	+0.1	+6.7	5.50				Meublement en toerusting
Furniture	124.8	124.8	113.9	0.0	+9.6	2.47				Meublement
Appliances	126.8	126.8	120.0	0.0	+5.7	1.57				Toebehore
Other household equipment and textiles	123.4	123.3	117.2	+0.1	+5.3	1.46				Ander huishoudelike toerusting en tekstiele
Household operation	144.1	142.7	130.2	+1.0	+10.7	2.57				Lopende huishouding
Household consumables	145.8	144.4	137.9	+1.0	+5.7	1.37				Huishoudelike verbruiksartikels
Domestic workers	148.5	146.3	124.0	+1.5	+19.8	0.83				Huishulpe
Other household services	137.5	137.5	123.8	0.0	+11.1	0.37				Ander huishoudelike dienste
Medical care and health expenses	161.1	161.1	142.3	0.0	+13.2	5.22				Mediese versorging en gesondheids-uitgawes
Transport	149.8	143.3	129.8	+0.3	+10.8	14.43				Vervoer
Vehicles	154.9	154.1	140.1	+0.5	+10.6	5.51				Voertuie
Running cost	134.0	133.5	120.6	+0.4	+11.1	5.76				Lopende koste
Public and hired transport	136.2	136.2	124.5	0.0	+11.0	3.16				Openbare en gehuurde vervoer
Communication	135.6	135.6	117.5	0.0	+15.4	1.61				Kommunikasie
Recreation and entertainment	129.8	129.8	116.2	0.0	+9.8	3.71				Ontspanning en vermaaklikheid
Reading matter	135.3	135.3	121.6	0.0	+11.3	0.75				Leesstof
Education	149.8	149.8	123.7	0.0	+21.1	1.76				Opvoeding
Personal care	132.0	132.0	121.0	0.0	+9.1	2.64				Persoonlike versorging
Other	142.8	141.9	129.3	+0.6	+10.4	9.49				Ander

TABLE 4 URBAN AREAS INDICES

TABEL 4 STEDELIKE GEBIEDSINDEKSE

BASE: EACH AREA COMPARED WITH ITSELF, 1990 = 100

BASIS: ELKE GEBIED VERGELEKE MET SIGSELF, 1990 = 100

Urban area Stedelike gebied	All items Alle items			Percentage change compared with - Persentasieveran- dering vergeleke met-	
	Feb. 1993	Jan. 1993	Feb. 1992	Jan. 1993	Feb. 1992
1. Cape Peninsula - Kaapse Skiereiland	139,8	139,1	127,1	+0,5	+10,0
2. Port Elizabeth/Uitenhage	136,4	135,7	125,1	+0,5	+9,0
3. East London - Oos-Londen	137,5	137,3	125,9	+0,1	+9,2
4. Kimberley	137,2	136,3	124,9	+0,7	+9,8
5. Pietermaritzburg	140,4	140,0	126,4	+0,3	+11,1
6. Durban/Pinetown	134,9	134,2	124,7	+0,5	+8,2
7. Pretoria/Verwoerdburg/Akasia	137,2	137,0	125,3	+0,1	+9,5
8. Witwatersrand	138,1	137,8	127,3	+0,2	+8,5
9. Klerksdorp/Stilfontein/ Orkney	135,7	135,8	125,5	-0,1	+8,1
10. Vaal Triangle - Vaaldriehoek	132,8	132,6	122,2	+0,2	+8,7
11. OFS Goldfields - OVS-goud- velde	134,5	134,6	124,8	-0,1	+7,8
12. Bloemfontein	133,4	133,6	120,7	-0,1	+10,5
Weighted average of the twelve areas - Beswaarde gemiddelde van die twaalf gebiede	137,6	137,2	126,2	+0,3	+9,0

Urban area Stedelike gebied	All items, excluding housing - Alle items, uitgesonderd behuising			Food only Slegs voedsel		
	Feb. 1993	Jan. 1993	Feb. 1992	Feb. 1993	Jan. 1993	Feb. 1992
1. Cape Peninsula - Kaapse Skiereiland	148,4	147,6	131,4	169,1	167,4	142,3
2. Port Elizabeth/Uitenhage	144,3	143,5	129,1	159,6	157,9	135,8
3. East London - Oos-Londen	145,1	144,9	130,1	158,3	157,6	139,6
4. Kimberley	142,9	142,0	127,3	155,9	154,8	136,7
5. Pietermaritzburg	148,6	148,1	130,3	174,8	174,1	146,0
6. Durban/Pinetown	143,0	142,1	128,9	156,3	154,1	139,3
7. Pretoria/Verwoerdburg/Akasia	145,5	145,3	129,6	159,1	159,5	138,5
8. Witwatersrand	145,5	145,1	131,1	156,6	156,6	140,7
9. Klerksdorp/Stilfontein/ Orkney	140,3	140,4	127,7	151,0	153,0	134,4
10. Vaal Triangle - Vaaldriehoek	137,7	137,5	124,3	148,6	148,6	132,1
11. OFS Goldfields - OVS-goud- velde	139,0	139,1	126,8	151,4	152,5	137,3
12. Bloemfontein	142,2	142,5	124,3	162,7	165,1	135,2
Weighted average of the twelve areas - Beswaarde gemiddelde van die twaalf gebiede	145,3	144,9	130,1	159,2	158,7	139,6

1990 = 100

TABEL 5 SEASONALLY ADJUSTED INDICES

	1993			1992			Weights Gewigte
	Feb.	Jan.	Dec./Des.	Nov.	Oct./Okt.	Sep.	
All items	137,6	137,1	135,6	135,5	135,0	134,6	100,00
Lower income group	138,0	137,4	136,5	136,4	136,1	135,8	19,42
Middle income group	139,4	138,8	137,3	137,2	136,8	136,4	24,09
Higher income group	136,5	136,2	134,6	134,4	133,8	133,3	56,50
All items excluding food	132,3	131,9	130,7	130,4	129,6	129,1	81,36
Commodities	144,3	143,8	142,0	141,7	141,2	140,6	57,92
Food and non-alcoholic beverages	158,9	157,5	155,4	156,3	157,4	157,6	18,64
Alcoholic beverages, cigarettes, cigars and tobacco	158,7	157,0	155,0	155,8	156,8	157,0	19,33
Clothing and footwear	127,0	127,3	126,5	126,2	124,7	123,5	2,17
Furniture and equipment	122,8	122,6	122,4	123,1	122,3	121,1	7,02
Vehicles	155,5	156,0	152,4	149,9	150,0	147,6	5,50
Other transport goods	132,8	130,2	128,3	127,9	124,9	124,3	5,51
Other commodities	137,7	138,8	136,5	135,4	134,2	133,9	5,76
Services	128,0	127,8	127,0	127,5	127,1	127,1	12,63
Housing and domestic workers	106,3	106,2	106,6	107,5	107,3	107,4	42,08
Transport	140,4	139,9	137,6	137,0	135,4	134,3	21,37
Other services	154,8	154,5	152,5	152,8	152,4	152,5	3,83
All items (VAT excluded)	136,0	135,5	134,0	133,9	133,4	132,9	16,88
							100,00
							Alle items (BTW uitgesluit)

TABEL 6 DIE VERBRUIKERSPRIJSINDEKS VIR PENSIONARISSE -
STEDELIKE GEBIEDSINDEKSE

TABLE 6 THE CONSUMER PRICE INDEX FOR PENSIONERS -
URBAN AREAS INDICES

BASE: EACH AREA COMPARED WITH ITSELF, 1990 = 100
BASIS: ELKE GEBIED VERGELEKE MET SIGSELF, 1990 = 100

Urban area Stedelike gebied	All items Alle items		Percentage change compared with - Persentasieverandering ver- geleke met -	
	Feb. 1993	Jan. 1993	Jan. 1993	Feb. 1992
1. Cape Peninsula - Kaapse Skiereiland	141,6	141,0	+0,4	+11,4
2. Port Elizabeth/Uitenhage	138,3	137,6	+0,5	+10,1
3. East London - Oos-Londen	140,5	140,1	+0,3	+10,8
4. Kimberley	138,8	137,8	+0,7	+11,0
5. Pietermaritzburg	139,9	139,6	+0,2	+8,9
6. Durban/Pinetown	136,9	136,2	+0,5	+10,5
7. Pretoria/Verwoerdburg/Akasia	139,9	139,8	+0,1	+9,0
8. Witwatersrand	138,3	138,1	+0,1	+8,6
9. Klerksdorp/Stilfontein/Orkney	135,6	135,8	-0,1	+9,4
10. Vaal Triangle - Vaaldrifhoek	133,3	133,1	+0,2	+6,3
11. OFS Goldfields - OVS-goudvelde	133,7	133,9	-0,1	+12,5
12. Bloemfontein	138,9	139,3	-0,3	+10,0
Weighted average of the twelve areas Beswaarde Gemiddelde van die twaalf gebiede	139,0	138,6	+0,3	+10,0

TABLE 7 - PERCENTAGE CHANGES BY TYPE
OF STORE
TABLE 7.1 - CHAIN-STORES 1/

TABEL 7 - PERSENTASIEVERANDERINGS VOLGENS
TIPE WINKEL
TABEL 7.1 - KETTINGWINKELS 1/

	Monthly percentage change Maandelikse persentasieverandering			Percentage change since Persentasieverandering sedert	
	Feb. 1993	Jan. 1993	Dec./Des 1992	May/Mei 1992	
Food	+0,3	+1,2	+0,1	+9,0	Voedsel
Processed	+0,7	+0,7	+1,0	+9,4	Verwerk
Unprocessed	-0,2	+1,4	-0,9	+8,2	Nie-verwerk
Grain products	+0,1	+0,9	+2,1	+11,1	Graanprodukte
Meat	+0,4	+1,2	+0,8	+10,0	Vleis
Fish and other seafood	+1,6	+1,1	+1,5	+7,7	Vis en ander seekos
Milk, cheese and eggs	+0,1	+0,2	+0,1	+7,6	Melk, kaas en eiers
Fats and oils	+0,1	-0,5	+0,3	+9,1	Vette en olies
Fruit and nuts	+0,5	+5,9	+3,5	+28,4	Vrugte en neute
Vegetables	-0,5	0,0	-7,8	-6,7	Groente
Sugar	+0,4	+0,1	+0,7	+17,2	Suiker
Coffee, tea and cocoa	+1,3	+0,9	+0,8	+8,5	Koffie, tee and kakao
Other	+0,9	+0,7	+0,6	+7,6	Ander

1/ With at least 15 branches
Met ten minste 15 takke

TABLE 7.2 - OTHER RETAILERS 2/

TABEL 7.2 - ANDER KLEINHANDELAARS 2/

	Monthly percentage change Maandelikse persentasieverandering			Percentage change since Persentasieverandering sedert	
	Feb. 1993	Jan. 1993	Dec./Des 1992	May/Mei 1992	
Food	-0,6	+0,4	+0,7	+8,7	Voedsel
Processed	+0,5	+0,4	+1,0	+9,6	Verwerk
Unprocessed	-1,5	+0,4	+0,4	+7,3	Nie-verwerk
Grain products	+0,2	+0,5	+0,7	+10,7	Graanprodukte
Meat	+0,4	+0,4	+1,8	+8,0	Vleis
Fish and other seafood	+0,3	+0,7	+0,7	+7,7	Vis en ander seekos
Milk, cheese and eggs	+0,6	+0,5	+0,3	+3,9	Melk, kaas en eiers
Fats and oils	0,0	-0,4	+0,1	+14,5	Vette en olies
Fruit and nuts	-7,6	+1,6	+7,2	+27,9	Vrugte en neute
Vegetables	-1,7	0,0	-6,0	-1,4	Groente
Sugar	+0,2	-0,4	+0,1	+12,0	Suiker
Coffee, tea and cocoa	+0,8	+0,5	+1,9	+8,7	Koffie, tee and kakao
Other	+1,2	+0,5	+0,5	+7,9	Ander

2/ Retailers not considered as chain-stores (see Table 7.1)
Kleinhandelaars wat nie as kettingwinkels beskou word nie (kyk Tabel 7.1)