



your leading partner in quality statistics

---

# Statistical release

## P0141

# Consumer Price Index

## September 2012

**Embargoed until:  
24 October 2012  
10:00**

**Enquiries:**

User information services  
Tel: (012) 310 8600 / 4892/ 8390

**Forthcoming issue:**

October 2012

**Expected release date**

21 November 2012

## KEY FINDINGS

The headline CPI (for all urban areas) annual inflation rate in September 2012 was 5,5%. This rate was 0,5 of a percentage point higher than the corresponding annual rate of 5,0% in August 2012. On average, prices increased by 0,9% between August 2012 and September 2012.

The **food and non-alcoholic beverages** index increased by 1,8% between August 2012 and September 2012. The annual rate increased to 5,8% in September 2012 from 4,9% in August 2012. The following components in the food and non-alcoholic beverages index increased: meat (4,2%), vegetables (2,1%), bread and cereals (1,7%), sugar, sweets and desserts (1,5%), other food (1,5%), fish (1,0%) and oils and fats (0,1%). The following components decreased: fruit (-2,3%), hot beverages (-0,3%) and milk, eggs and cheese (-0,2%).

The **alcoholic beverages and tobacco** index increased by 0,1% between August 2012 and September 2012. The annual rate decreased to 7,3% in September 2012 from 7,4% in August 2012.

The **housing and utilities** index increased by 0,7% between August 2012 and September 2012, mainly due to a 1,4% increase in actual rentals for housing and a 1,0% increase in owners' equivalent rent. The annual rate increased to 5,9% in September 2012 from 5,8% in August 2012.

The **transport** index increased by 1,9% between August 2012 and September 2012, mainly due to a 93c/litre increase in the price of petrol. The annual rate increased to 6,6% in September 2012 from 4,9% in August 2012.

The **recreation and culture** index increased by 0,5% between August 2012 and September 2012. The annual rate increased to 1,5% in September 2012 from 1,3% in August 2012.

The provinces with an annual inflation rate lower than or equal to headline inflation were Free State (5,4%), Gauteng (5,4%), Eastern Cape (5,3%) and Western Cape (5,1%). The provinces with an annual inflation rate higher than headline inflation were North West (6,6%), Mpumalanga (6,3%), Limpopo (6,1%), KwaZulu-Natal (6,0%) and Northern Cape (5,9%).

## NOTES

### CPI for October 2012

No surveys in addition to the published surveys will be conducted in October 2012.

### Publication dates for future releases

Year	Issue	Publication date
2012	October	21 November 2012
	November	12 December 2012
	December	23 January 2013

**P J Lehohla**  
**Statistician-General**

**TABLES**

**Table A - Consumer Price Index: Indices and percentage changes**

Index description	Weight	Index (2008=100)			Percentage change				
		Sep 2011	Aug 2012	Sep 2012	Month-on-month	Year-on-year			
<b>CPI Headline</b>		100,00	118,8	124,2	125,3	+0,9	+5,5		
<b>Analytical series</b>	<b>CPI per expenditure quintile</b>								
	1	1,78	121,0	127,5	128,7	+0,9	+6,4		
	2	3,88	121,0	127,5	128,7	+0,9	+6,4		
	3	7,17	120,7	127,1	128,2	+0,9	+6,2		
	4	15,61	120,4	126,6	127,8	+0,9	+6,1		
	5	71,56	118,0	123,1	124,1	+0,8	+5,2		
	<b>CPI for all goods</b>		54,20	116,2	120,7	122,2	+1,2	+5,2	
	<b>CPI for durable goods</b>		14,79	98,1	98,1	98,0	-0,1	-0,1	
	<b>CPI for semi-durable goods</b>		6,73	107,4	109,2	109,7	+0,5	+2,1	
	<b>CPI for non-durable goods</b>		32,68	126,3	133,3	135,7	+1,8	+7,4	
	<b>CPI for services</b>		45,80	121,7	128,3	128,9	+0,5	+5,9	
	<b>CPI for pensioners</b>		..	120,8	126,5	127,7	+0,9	+5,7	
	<b>CPI for administered prices</b>	<b>Total</b>	14,66	129,7	139,7	142,4	+1,9	+9,8	
		<b>Regulated</b>	9,62	129,0	138,7	142,9	+3,0	+10,8	
		<b>Not regulated</b>	5,04	130,8	141,5	141,5	0,0	+8,2	
	<b>CPI for food and non-alcoholic beverages (NAB)</b>		15,68	120,7	125,4	127,7	+1,8	+5,8	
	<b>CPI excluding food and NAB</b>		84,32	118,4	123,9	124,8	+0,7	+5,4	
	<b>CPI excluding petrol</b>		96,07	119,0	124,3	125,0	+0,6	+5,0	
	<b>CPI excluding food and NAB and petrol</b>		80,39	118,7	124,0	124,4	+0,3	+4,8	
	<b>CPI excluding food and NAB, petrol, VAT, assessment rates, and finance charges</b>		77,05	118,3	123,5	123,9	+0,3	+4,7	
	<b>CPI excluding housing</b>		77,44	116,7	121,8	122,9	+0,9	+5,3	
	<b>CPI excluding petrol and energy</b>		94,39	117,5	122,5	123,2	+0,6	+4,9	
	<b>CPI excluding energy</b>		98,32	117,3	122,4	123,5	+0,9	+5,3	
<b>CPI excluding food and NAB, petrol and energy</b>		78,71	116,8	121,9	122,3	+0,3	+4,7		
<b>CPI excluding owners' equivalent rent</b>		87,79	119,2	124,9	125,9	+0,8	+5,6		
<b>CPI excluding administered prices</b>		85,34	116,9	121,5	122,3	+0,7	+4,6		
<b>CPI administered prices excluding petrol and paraffin</b>		10,57	136,2	146,4	146,4	0,0	+7,5		
<b>Geographic indices</b>	<b>CPI for primary urban areas</b>		62,76	118,5	123,8	124,9	+0,9	+5,4	
	<b>CPI for secondary urban areas</b>		20,33	119,5	125,2	126,4	+1,0	+5,8	
	<b>CPI for rural areas [1]</b>		16,91	118,5	124,3	125,6	+1,0	+6,0	
	<b>CPI for total country</b>		100,00	118,7	124,2	125,3	+0,9	+5,6	
	<b>CPI per province</b>	<b>Western Cape</b>		18,33	119,1	124,2	125,2	+0,8	+5,1
		<b>Eastern Cape</b>		9,91	120,5	125,8	126,9	+0,9	+5,3
		<b>Northern Cape</b>		1,66	119,5	125,1	126,6	+1,2	+5,9
		<b>Free State</b>		6,45	119,9	125,2	126,4	+1,0	+5,4
		<b>KwaZulu-Natal</b>		14,08	117,5	123,3	124,5	+1,0	+6,0
		<b>North West</b>		5,79	118,4	124,5	126,2	+1,4	+6,6
		<b>Gauteng</b>		32,77	118,3	123,7	124,7	+0,8	+5,4
<b>Mpumalanga</b>			5,47	119,4	125,8	126,9	+0,9	+6,3	
<b>Limpopo</b>		5,54	117,5	123,5	124,7	+1,0	+6,1		

[1] The CPI for rural areas uses weights for rural areas but prices from secondary areas.

Note: Unless otherwise stated all tables refer to all urban areas.

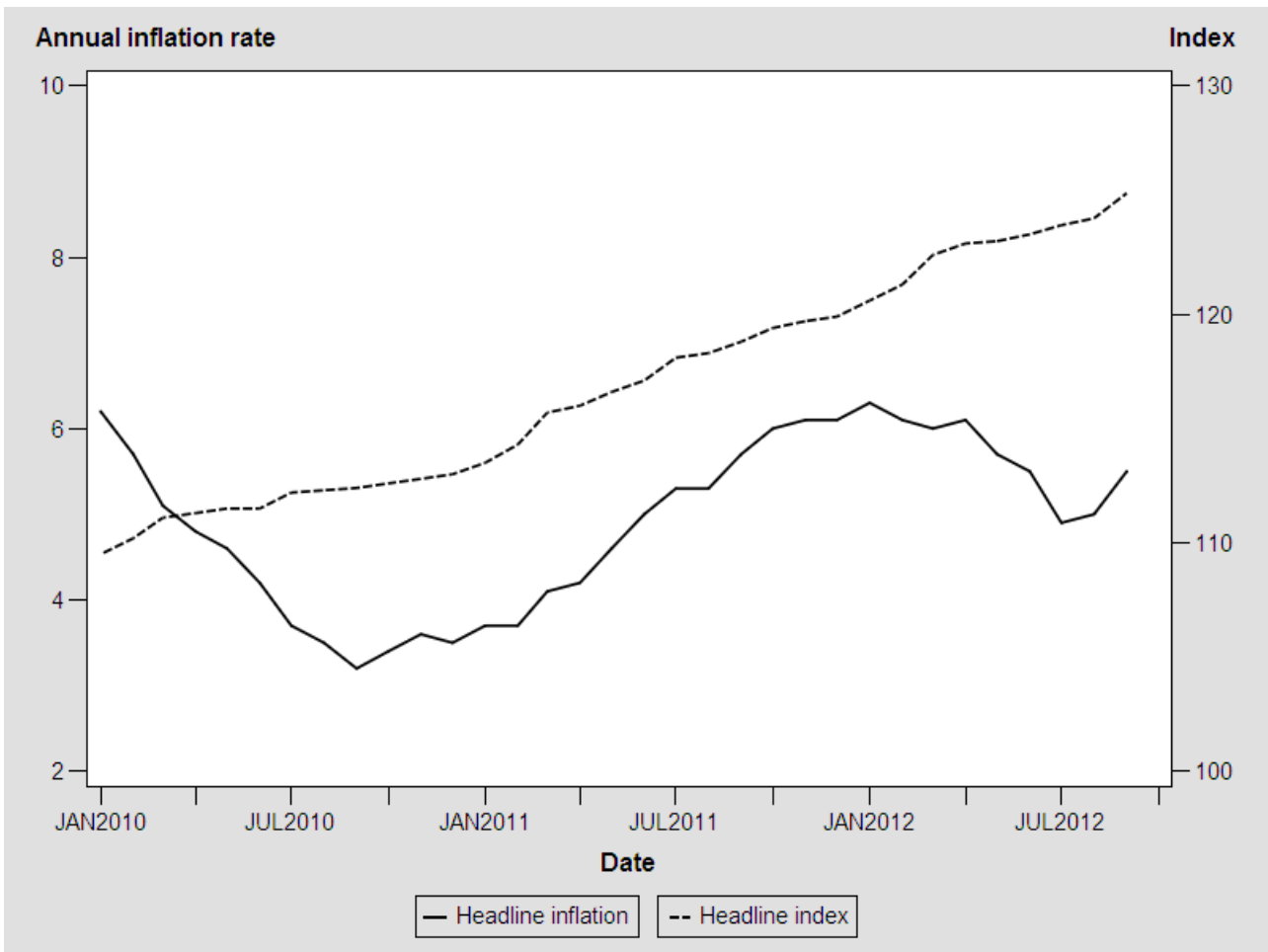
**Table B - Consumer Price Index: Index numbers and year-on-year rates**

**Base year: 2008=100**

	Jan	Feb	Mar	Apr	May	Jun	Jul	Aug	Sep	Oct	Nov	Dec	Average [1]
<b>Year</b>													
<b>2010</b>													
<b>Index</b>	109,5	110,2	111,1	111,3	111,5	111,5	112,2	112,3	112,4	112,6	112,8	113,0	111,7
<b>Rate</b>	6,2	5,7	5,1	4,8	4,6	4,2	3,7	3,5	3,2	3,4	3,6	3,5	4,3
<b>2011</b>													
<b>Index</b>	113,5	114,3	115,7	116,0	116,6	117,1	118,1	118,3	118,8	119,4	119,7	119,9	117,3
<b>Rate</b>	3,7	3,7	4,1	4,2	4,6	5,0	5,3	5,3	5,7	6,0	6,1	6,1	5,0
<b>2012</b>													
<b>Index</b>	120,6	121,3	122,6	123,1	123,2	123,5	123,9	124,2	125,3	..	..	..	..
<b>Rate</b>	6,3	6,1	6,0	6,1	5,7	5,5	4,9	5,0	5,5	..	..	..	..

[1] Annual average.

**CPI headline: Index numbers and inflation rate**



**Table C - Contribution of different groups to the annual percentage change in the CPI**

Product group	Contribution	
	Aug 2012	Sep 2012
Food and non-alcoholic beverages	+0,8	+0,9
Alcoholic beverages and tobacco	+0,5	+0,4
Clothing and footwear	+0,1	+0,1
Housing and utilities	+1,4	+1,4
Household contents and services	+0,1	+0,1
Health	+0,1	+0,1
Transport	+0,8	+1,1
Recreation and culture	0,0	+0,1
Education	+0,2	+0,2
Restaurants and hotels	+0,2	+0,2
Miscellaneous goods and services	+0,7	+0,7
Residual	+0,1	+0,2
All Items	+5,0	+5,5

**Table D - Contribution of different groups to the monthly percentage change in the CPI**

Product group	Contribution	
	Aug 2012	Sep 2012
Food and non-alcoholic beverages	0,0	+0,3
Housing and utilities	+0,1	+0,2
Transport	+0,1	+0,3
Residual	0,0	+0,1
All Items	+0,2	+0,9

**Table E - Consumer Price Index: Group and product indices and percentage changes**

Index description	Weight	Index (2008=100)			Percentage change	
		Sep 2011	Aug 2012	Sep 2012	Month-on-month	Year-on-year
<b>All Items</b>	100,00	118,8	124,2	125,3	+0,9	+5,5
<b>Food and non-alcoholic beverages</b>	15,68	120,7	125,4	127,7	+1,8	+5,8
<b>Food</b>	14,27	119,9	124,6	127,2	+2,1	+6,1
<b>Processed</b>	6,79	122,4	128,2	129,8	+1,2	+6,0
<b>Unprocessed</b>	7,48	117,7	121,3	124,8	+2,9	+6,0
<b>Bread and cereals</b>	3,08	114,6	120,4	122,5	+1,7	+6,9
<b>Meat</b>	4,59	120,1	124,2	129,4	+4,2	+7,7
<b>Fish</b>	0,66	121,9	128,8	130,1	+1,0	+6,7
<b>Milk, eggs and cheese</b>	1,79	115,5	124,6	124,4	-0,2	+7,7
<b>Oils and fats</b>	0,53	112,7	119,1	119,2	+0,1	+5,8
<b>Fruit</b>	0,47	120,7	123,4	120,6	-2,3	-0,1
<b>Vegetables</b>	1,63	124,8	121,2	123,7	+2,1	-0,9
<b>Sugar, sweets and desserts</b>	0,77	135,3	142,5	144,6	+1,5	+6,9
<b>Other food</b>	0,75	127,4	134,1	136,1	+1,5	+6,8
<b>Non-alcoholic beverages</b>	1,41	129,0	133,5	133,4	-0,1	+3,4
<b>Hot beverages</b>	0,34	136,6	141,8	141,4	-0,3	+3,5
<b>Cold beverages</b>	1,07	126,7	130,9	130,9	0,0	+3,3
<b>Alcoholic beverages and tobacco</b>	5,58	130,4	139,7	139,9	+0,1	+7,3
<b>Alcoholic beverages</b>	3,29	124,2	135,5	135,7	+0,1	+9,3
<b>Spirits</b>	0,94	123,3	134,0	133,9	-0,1	+8,6
<b>Wine</b>	0,72	121,4	127,1	127,7	+0,5	+5,2
<b>Beer</b>	1,63	125,9	140,0	140,3	+0,2	+11,4
<b>Tobacco</b>	2,29	139,3	145,8	146,0	+0,1	+4,8
<b>Clothing and footwear</b>	4,11	110,3	113,7	114,2	+0,4	+3,5
<b>Clothing</b>	2,90	111,5	115,1	115,7	+0,5	+3,8
<b>Footwear</b>	1,21	107,5	110,3	110,7	+0,4	+3,0
<b>Housing and utilities</b>	22,56	125,8	132,3	133,2	+0,7	+5,9
<b>Actual rentals for housing</b>	3,49	118,9	122,9	124,6	+1,4	+4,8
<b>Owners' equivalent rent</b>	12,21	115,5	119,1	120,3	+1,0	+4,2
<b>Maintenance and repair</b>	1,68	121,7	128,8	129,4	+0,5	+6,3
<b>Water and other services</b>	3,31	133,5	145,7	145,7	0,0	+9,1
<b>Electricity and other fuels</b>	1,87	195,7	215,2	215,1	0,0	+9,9
<b>Household contents and services</b>	5,86	108,8	111,1	111,4	+0,3	+2,4
<b>Furnishings, floor coverings and textiles</b>	2,17	92,4	90,8	90,7	-0,1	-1,8
<b>Appliances, tableware and equipment</b>	1,05	108,0	111,5	111,3	-0,2	+3,1
<b>Supplies and services</b>	2,64	122,7	127,8	128,4	+0,5	+4,6
<b>Domestic workers' wages</b>	1,99	121,7	127,2	128,5	+1,0	+5,6
<b>Health</b>	1,47	126,5	133,1	133,5	+0,3	+5,5
<b>Medical products</b>	0,57	124,3	128,3	129,4	+0,9	+4,1
<b>Medical services</b>	0,90	127,9	136,1	136,1	0,0	+6,4
<b>Transport</b>	18,80	108,3	113,3	115,5	+1,9	+6,6
<b>Purchase of vehicles</b>	11,25	102,0	102,5	102,4	-0,1	+0,4
<b>Private transport operation</b>	4,82	116,0	124,6	133,2	+6,9	+14,8
<b>Petrol</b>	3,93	112,8	122,2	132,7	+8,6	+17,6
<b>Other running costs</b>	0,89	130,1	135,2	135,2	0,0	+3,9
<b>Public transport</b>	2,73	120,3	137,4	138,1	+0,5	+14,8
<b>Communication</b>	3,22	96,9	96,7	96,7	0,0	-0,2
<b>Postal services and telecommunication services</b>	2,90	102,7	102,9	102,9	0,0	+0,2
<b>Telecommunication equipment</b>	0,32	45,2	41,4	41,4	0,0	-8,4
<b>Recreation and culture</b>	4,19	111,0	112,1	112,7	+0,5	+1,5
<b>Recreational equipment</b>	2,23	95,5	94,8	94,6	-0,2	-0,9
<b>Recreational and cultural services</b>	1,25	132,0	135,3	137,1	+1,3	+3,9
<b>Books, newspapers and stationery</b>	0,71	122,2	125,3	126,4	+0,9	+3,4
<b>Education</b>	2,19	132,5	144,4	144,4	0,0	+9,0
<b>Primary and secondary education</b>	1,28	135,4	146,9	146,9	0,0	+8,5
<b>Tertiary</b>	0,90	128,3	140,8	140,8	0,0	+9,7

**Table E - Consumer Price Index: Group and product indices and percentage changes (concluded)**

Index description		Weight	Index (2008=100)			Percentage change	
			Sep 2011	Aug 2012	Sep 2012	Month-on-month	Year-on-year
<b>Restaurants and hotels</b>		2,78	125,8	132,9	133,3	+0,3	+6,0
	<b>Restaurants</b>	1,85	126,5	134,7	134,9	+0,1	+6,6
	<b>Hotels</b>	0,93	124,4	129,3	130,1	+0,6	+4,6
<b>Miscellaneous goods and services</b>		13,56	124,5	131,1	131,0	-0,1	+5,2
	<b>Personal care</b>	2,20	118,2	121,4	121,4	0,0	+2,7
	<b>Insurance</b>	7,71	126,0	134,3	134,2	-0,1	+6,5
	<b>Financial services</b>	1,27	125,7	134,7	134,7	0,0	+7,2
	<b>Other services</b>	2,38	124,9	127,7	127,7	0,0	+2,2

## GLOSSARY

A complete set of definitions is available in the methods and sources document on the Stats SA website <http://www.statssa.gov.za>

<b>Annual inflation rate</b>	The annual inflation rate is the change in the CPI for all items of the relevant month of the current year compared with the CPI for all items of the same month in the previous year expressed as a percentage.
<b>Annual percentage change</b>	The annual percentage change is the change in the index of the relevant month of the current year compared with the index of the same month in the previous year expressed as a percentage.
<b>Average annual inflation rate</b>	The average annual inflation rate is the change in the average CPI for all items of one year compared with the average CPI for all items of the previous year expressed as a percentage.
<b>Average annual percentage change</b>	The average annual percentage change is the change in the average index of one year compared with the average index of the previous year expressed as a percentage.
<b>CPI for administered prices</b>	An administered price is defined as the price of a product which is set consciously by an individual producer or group of producers and/or any price which can be determined or influenced by government, either directly or through a government agency/institution without reference to market forces. Products and services included are assessment rates, sanitary fees, refuse removal, water, electricity, paraffin, petrol, public transport – trains, motor licences, motor registration, telephone fees, postage, cell calls, television licence, school fees, university/technicons/colleges and university boarding fees.
<b>CPI for regulated prices</b>	Regulated prices are those administered prices that are monitored and controlled by government policy. To this end, price regulation does not necessarily imply the presence of an economic regulator, but the restriction on the extent to which prices may vary, depending on government's policy objective. Products and services included are water, electricity, paraffin, petrol, telephone fees, postage and cell calls.
<b>Inflation rate</b>	The inflation rate is the change in the CPI for all items of the relevant month of the current year compared with the CPI for all items of the same month in the previous year expressed as a percentage.
<b>Monthly percentage change</b>	The monthly percentage change is the change in the CPI of the relevant month compared with the CPI of the previous month expressed as a percentage.
<b>CPI per expenditure quintile</b>	quintile 1 - up to R 14 564; quintile 2 - R 14 565 up to R 23 278; quintile 3 - R 23 279 up to R 36 755; quintile 4 - R 36 756 up to R 79 152; and quintile 5 - R 79 153 and more.



**FOR MORE INFORMATION**

Stats SA publishes approximately 300 different releases each year. It is not economically viable to produce them in more than one of South Africa’s eleven official languages. Since the releases are used extensively, not only locally but also by international economic and social-scientific communities, Stats SA releases are published in English only.

Stats SA has copyright on this publication. Users may apply the information as they wish, provided that they acknowledge Stats SA as the source of the basic data wherever they process, apply, utilise, publish or distribute the data: and also that they specify that the relevant application and analysis (where applicable) result from their own processing of data.

**Advance release calendar**

An advance release calendar is disseminated on <http://www.statssa.gov.za>

**Forthcoming issues**

Issue	Expected date for publication
October 2012	21 November 2012
November 2012	12 December 2012
December 2012	23 January 2013
January 2013	20 February 2013
February 2013	20 March 2013
March 2013	17 April 2013

**Stats SA products**

A complete set of Stats SA publications is available in the Stats SA Library and the following libraries -  
 National Library of South Africa, Pretoria Division  
 National Library of South Africa, Cape Town Division  
 Natal Society Library, Pietermaritzburg  
 Library of Parliament, Cape Town  
 Bloemfontein Public Library  
 Johannesburg Public Library  
 Eastern Cape Library Services, King William’s Town  
 Central Regional Library, Polokwane  
 Central Reference Library, Nelspruit  
 Central Reference Collection, Kimberley  
 Central Reference Library, Mmabatho.

Stats SA also provides a subscription service.

**Electronic services**

A large range of data are available via on-line services. For more details about our electronic data services, contact (012) 310 8600 / 8390 / 8351 / 4892 / 8496 / 8095.

You can visit us on the Internet at: <http://www.statssa.gov.za>

**Enquiries**

Technical enquiries:	Marietjie Bennett, Anita Voges (012) 310 8077 / 8151
Telephone number:	(012) 310 8077 / 8151 (survey area) (012) 310 8600 / 8390 / 8351 / 4892 / 8496 / 8095 (user) (012) 310 8161 (publishing) (012) 310 8490 (library)
Fax number:	(012) 310 8502
Email:	<a href="mailto:cpi@statssa.gov.za">cpi@statssa.gov.za</a> (technical enquiries) <a href="mailto:info@statssa.gov.za">info@statssa.gov.za</a> (user information services) <a href="mailto:distribution@statssa.gov.za">distribution@statssa.gov.za</a> (orders)
Postal address:	Private Bag X44, Pretoria, 0001

**Produced by Stats SA**