



your leading partner in quality statistics

---

# Statistical release

## P0141

# Consumer Price Index

## March 2012

**Embargoed until:**  
**18 April 2012**  
**10:00**

**Enquiries:**

User information services  
Tel: (012) 310 8600 / 4892/ 8390

**Forthcoming issue:**

April 2012

**Expected release date**

23 May 2012

## KEY FINDINGS

The headline CPI (for all urban areas) annual inflation rate in March 2012 was 6,0%. This rate was 0,1 of a percentage point lower than the corresponding annual rate of 6,1% in February 2012. On average, prices increased by 1,1% between February 2012 and March 2012.

The **food and non-alcoholic beverages** index increased by 0,3% between February 2012 and March 2012. The annual rate decreased to 8,6% in March 2012 from 9,6% in February 2012. The following components in the food and non-alcoholic beverages index increased: sugar, sweets and desserts (3,6%), milk, eggs and cheese (2,3%), hot beverages (2,2%), other food (1,2%), fish (0,8%), cold beverages (0,3%), bread and cereals (0,2%) and vegetables (0,2%). The following components decreased: meat (-1,1%), oils and fats (-0,2%) and fruit (-0,1%).

The **alcoholic beverages and tobacco** index increased by 4,9% between February 2012 and March 2012, mainly due to increases in excise duties. The annual rate increased to 7,6% in March 2012 from 6,4% in February 2012.

The **housing and utilities** index increased by 0,9% between February 2012 and March 2012, mainly due to a 1,4% monthly increase in actual rentals for housing and a 1,3% monthly increase in owners' equivalent rent. The annual rate was unchanged at 6,6% in March 2012.

The **transport** index increased by 0,9% between February 2012 and March 2012, mainly due to a 28c/litre increase in the price of petrol. The annual rate decreased to 6,6% in March 2012 from 6,8% in February 2012.

The **education** index increased by 9,0% between February 2012 and March 2012. The annual rate increased to 9,0% in March 2012 from 8,6% in February 2012.

The **restaurants and hotels** index increased by 1,7% between February 2012 and March 2012. The annual rate increased to 6,0% in March 2012 from 5,6% in February 2012.

The **miscellaneous goods and services** index increased by 0,4% between February 2012 and March 2012, mainly due to a 3,2% increase in financial services. The annual rate was unchanged at 5,5% in March 2012.

The provinces with an annual inflation rate lower than or equal to headline inflation were Gauteng (5,8%) and Western Cape (5,5%). The provinces with an annual inflation rate higher than headline inflation were Northern Cape (7,7%), Eastern Cape (6,8%), KwaZulu-Natal (6,6%), Mpumalanga (6,6%), North West (6,5%), Limpopo (6,5%) and Free State (6,4%).

## NOTES

### CPI for March 2012

No surveys in addition to the published surveys will be conducted in March 2012.

### Publication dates for future releases

Year	Issue	Publication date
2012	April	23 May 2012
	May	20 June 2012
	June	18 July 2012
	July	22 August 2012
	August	19 September 2012
	September	24 October 2012
	October	21 November 2012
	November	12 December 2012
	December	23 January 2013

**P J Lehohla**  
**Statistician-General**

**TABLES**

**Table A - Consumer Price Index: Indices and percentage changes**

Index description			Weight	Index (2008=100)			Percentage change	
				Mar 2011	Feb 2012	Mar 2012	Month-on-month	Year-on-year
<b>CPI Headline</b>			100,00	115,7	121,3	122,6	+1,1	+6,0
<b>Analytical series</b>	CPI per expenditure quintile	1	1,78	116,2	123,9	125,1	+1,0	+7,7
		2	3,88	116,4	123,8	125,0	+1,0	+7,4
		3	7,17	116,4	123,3	124,6	+1,1	+7,0
		4	15,61	116,5	123,0	124,4	+1,1	+6,8
		5	71,56	115,4	120,5	121,7	+1,0	+5,5
	CPI for all goods		54,20	113,0	118,7	119,8	+0,9	+6,0
	CPI for durable goods		14,79	99,5	98,6	98,6	0,0	-0,9
	CPI for semi-durable goods		6,73	106,4	108,1	108,0	-0,1	+1,5
	CPI for non-durable goods		32,68	120,5	130,0	131,9	+1,5	+9,5
	CPI for services		45,80	118,8	124,3	125,8	+1,2	+5,9
	CPI for pensioners		..	117,2	123,5	124,7	+1,0	+6,4
	CPI for administered prices	Total	14,66	121,3	132,0	134,9	+2,2	+11,2
		Regulated	9,62	118,7	132,6	134,0	+1,1	+12,9
		Not regulated	5,04	126,1	130,9	136,7	+4,4	+8,4
	CPI for food and non-alcoholic beverages (NAB)		15,68	115,9	125,5	125,9	+0,3	+8,6
	CPI excluding food and NAB		84,32	115,6	120,5	121,9	+1,2	+5,4
	CPI excluding petrol		96,07	116,1	121,3	122,5	+1,0	+5,5
	CPI excluding food and NAB and petrol		80,39	116,1	120,4	121,8	+1,2	+4,9
	CPI excluding food and NAB, petrol, VAT, assessment rates, and finance charges		77,05	115,9	120,0	121,4	+1,2	+4,7
	CPI excluding housing		77,44	114,4	119,7	121,0	+1,1	+5,8
	CPI excluding petrol and energy		94,39	115,1	119,8	121,0	+1,0	+5,1
	CPI excluding energy		98,32	114,6	119,8	121,1	+1,1	+5,7
	CPI excluding food and NAB, petrol and energy		78,71	114,9	118,6	120,0	+1,2	+4,4
CPI excluding owners' equivalent rent		87,79	116,0	121,9	123,2	+1,1	+6,2	
CPI excluding administered prices		85,34	114,7	119,4	120,4	+0,8	+5,0	
CPI administered prices excluding petrol and paraffin		10,57	127,8	136,2	139,0	+2,1	+8,8	
<b>Geographic indices</b>	CPI for primary urban areas		62,76	115,5	120,9	122,2	+1,1	+5,8
	CPI for secondary urban areas		20,33	116,2	122,3	123,5	+1,0	+6,3
	CPI for rural areas [1]		16,91	114,9	121,7	122,9	+1,0	+7,0
	CPI for total country		100,00	115,5	121,3	122,6	+1,1	+6,1
	CPI per province	Western Cape	18,33	116,1	121,2	122,5	+1,1	+5,5
		Eastern Cape	9,91	116,3	123,1	124,2	+0,9	+6,8
		Northern Cape	1,66	114,9	122,3	123,7	+1,1	+7,7
		Free State	6,45	116,3	122,8	123,7	+0,7	+6,4
		KwaZulu-Natal	14,08	114,5	120,5	122,0	+1,2	+6,6
		North West	5,79	115,2	121,2	122,7	+1,2	+6,5
		Gauteng	32,77	115,4	120,8	122,1	+1,1	+5,8
Mpumalanga		5,47	116,5	122,8	124,2	+1,1	+6,6	
Limpopo	5,54	114,4	120,6	121,8	+1,0	+6,5		

[1] The CPI for rural areas uses weights for rural areas but prices from secondary areas.

Note: Unless otherwise stated all tables refer to all urban areas.

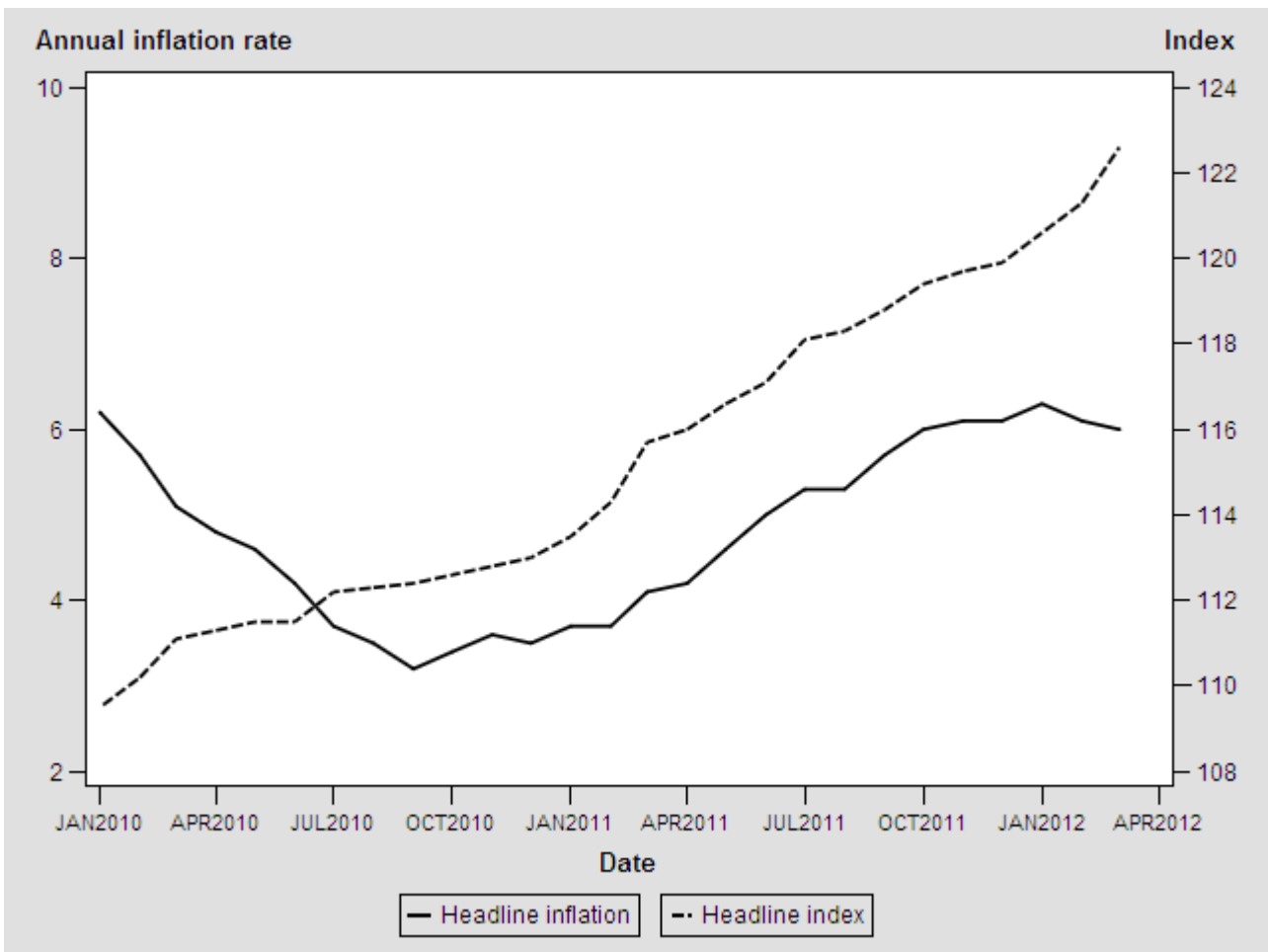
**Table B - Consumer Price Index: Index numbers and year-on-year rates**

**Base year: 2008=100**

	Jan	Feb	Mar	Apr	May	Jun	Jul	Aug	Sep	Oct	Nov	Dec	Average [1]
<b>Year</b>													
<b>2010</b>													
<b>Index</b>	109,5	110,2	111,1	111,3	111,5	111,5	112,2	112,3	112,4	112,6	112,8	113,0	111,7
<b>Rate</b>	6,2	5,7	5,1	4,8	4,6	4,2	3,7	3,5	3,2	3,4	3,6	3,5	4,3
<b>2011</b>													
<b>Index</b>	113,5	114,3	115,7	116,0	116,6	117,1	118,1	118,3	118,8	119,4	119,7	119,9	117,3
<b>Rate</b>	3,7	3,7	4,1	4,2	4,6	5,0	5,3	5,3	5,7	6,0	6,1	6,1	5,0
<b>2012</b>													
<b>Index</b>	120,6	121,3	122,6	..	..	..	..	..	..	..	..	..	..
<b>Rate</b>	6,3	6,1	6,0	..	..	..	..	..	..	..	..	..	..

[1] Annual average.

**CPI headline: Index numbers and inflation rate**



**Table C - Contribution of different groups to the annual percentage change in the CPI**

Product group	Contribution	
	Feb 2012	Mar 2012
Food and non-alcoholic beverages	+1,5	+1,4
Alcoholic beverages and tobacco	+0,4	+0,5
Clothing and footwear	+0,1	+0,1
Housing and utilities	+1,5	+1,5
Household contents and services	+0,1	+0,1
Health	+0,1	+0,1
Transport	+1,2	+1,1
Education	+0,2	+0,2
Restaurants and hotels	+0,2	+0,2
Miscellaneous goods and services	+0,8	+0,8
All Items	+6,1	+6,0

**Table D - Contribution of different groups to the monthly percentage change in the CPI**

Product group	Contribution	
	Feb 2012	Mar 2012
Food and non-alcoholic beverages	-0,1	+0,1
Alcoholic beverages and tobacco	0,0	+0,3
Housing and utilities	0,0	+0,2
Health	+0,1	0,0
Transport	+0,1	+0,2
Education	0,0	+0,2
Restaurants and hotels	0,0	+0,1
Miscellaneous goods and services	+0,4	+0,1
Residual	+0,1	-0,1
All Items	+0,6	+1,1

**Table E - Consumer Price Index: Group and product indices and percentage changes**

Index description	Weight	Index (2008=100)			Percentage change	
		Mar 2011	Feb 2012	Mar 2012	Month-on-month	Year-on-year
<b>All Items</b>	100,00	115,7	121,3	122,6	+1,1	+6,0
<b>Food and non-alcoholic beverages</b>	15,68	115,9	125,5	125,9	+0,3	+8,6
<b>Food</b>	14,27	115,0	124,9	125,2	+0,2	+8,9
<b>Processed</b>	6,79	116,2	126,6	127,5	+0,7	+9,7
<b>Unprocessed</b>	7,48	113,9	123,3	123,2	-0,1	+8,2
<b>Bread and cereals</b>	3,08	108,7	120,7	121,0	+0,2	+11,3
<b>Meat</b>	4,59	116,2	128,2	126,8	-1,1	+9,1
<b>Fish</b>	0,66	116,3	125,4	126,4	+0,8	+8,7
<b>Milk, eggs and cheese</b>	1,79	112,4	119,1	121,8	+2,3	+8,4
<b>Oils and fats</b>	0,53	108,4	117,9	117,7	-0,2	+8,6
<b>Fruit</b>	0,47	126,9	127,8	127,7	-0,1	+0,6
<b>Vegetables</b>	1,63	115,8	122,3	122,6	+0,2	+5,9
<b>Sugar, sweets and desserts</b>	0,77	126,7	137,6	142,6	+3,6	+12,5
<b>Other food</b>	0,75	122,1	130,5	132,1	+1,2	+8,2
<b>Non-alcoholic beverages</b>	1,41	125,7	131,9	132,9	+0,8	+5,7
<b>Hot beverages</b>	0,34	128,2	139,1	142,2	+2,2	+10,9
<b>Cold beverages</b>	1,07	124,9	129,7	130,1	+0,3	+4,2
<b>Alcoholic beverages and tobacco</b>	5,58	128,0	131,3	137,7	+4,9	+7,6
<b>Alcoholic beverages</b>	3,29	121,7	125,8	133,6	+6,2	+9,8
<b>Spirits</b>	0,94	121,1	123,9	130,7	+5,5	+7,9
<b>Wine</b>	0,72	119,6	121,5	125,4	+3,2	+4,8
<b>Beer</b>	1,63	123,0	128,9	139,0	+7,8	+13,0
<b>Tobacco</b>	2,29	136,9	139,2	143,6	+3,2	+4,9
<b>Clothing and footwear</b>	4,11	108,1	111,8	112,2	+0,4	+3,8
<b>Clothing</b>	2,90	108,6	113,2	113,5	+0,3	+4,5
<b>Footwear</b>	1,21	106,8	108,5	108,8	+0,3	+1,9
<b>Housing and utilities</b>	22,56	119,8	126,6	127,7	+0,9	+6,6
<b>Actual rentals for housing</b>	3,49	116,3	119,8	121,5	+1,4	+4,5
<b>Owners' equivalent rent</b>	12,21	112,9	116,3	117,8	+1,3	+4,3
<b>Maintenance and repair</b>	1,68	118,7	124,1	125,3	+1,0	+5,6
<b>Water and other services</b>	3,31	122,3	133,5	133,5	0,0	+9,2
<b>Electricity and other fuels</b>	1,87	167,6	196,3	196,4	+0,1	+17,2
<b>Household contents and services</b>	5,86	107,3	109,0	109,7	+0,6	+2,2
<b>Furnishings, floor coverings and textiles</b>	2,17	93,1	91,7	91,6	-0,1	-1,6
<b>Appliances, tableware and equipment</b>	1,05	108,4	108,5	109,5	+0,9	+1,0
<b>Supplies and services</b>	2,64	118,5	123,3	124,8	+1,2	+5,3
<b>Domestic workers' wages</b>	1,99	117,7	122,9	124,2	+1,1	+5,5
<b>Health</b>	1,47	126,2	132,3	132,5	+0,2	+5,0
<b>Medical products</b>	0,57	123,4	126,3	126,8	+0,4	+2,8
<b>Medical services</b>	0,90	127,9	136,1	136,1	0,0	+6,4
<b>Transport</b>	18,80	105,3	111,2	112,2	+0,9	+6,6
<b>Purchase of vehicles</b>	11,25	102,7	103,0	102,9	-0,1	+0,2
<b>Private transport operation</b>	4,82	108,2	123,3	126,0	+2,2	+16,5
<b>Petrol</b>	3,93	104,6	121,5	124,7	+2,6	+19,2
<b>Other running costs</b>	0,89	123,6	131,0	131,8	+0,6	+6,6
<b>Public transport</b>	2,73	111,0	124,0	126,1	+1,7	+13,6
<b>Communication</b>	3,22	97,9	96,5	96,5	0,0	-1,4
<b>Postal services and telecommunication services</b>	2,90	103,2	102,5	102,5	0,0	-0,7
<b>Telecommunication equipment</b>	0,32	51,0	42,7	42,4	-0,7	-16,9
<b>Recreation and culture</b>	4,19	111,6	111,1	110,7	-0,4	-0,8
<b>Recreational equipment</b>	2,23	99,1	94,3	93,8	-0,5	-5,3
<b>Recreational and cultural services</b>	1,25	127,3	133,5	133,5	0,0	+4,9
<b>Books, newspapers and stationery</b>	0,71	122,9	124,0	123,5	-0,4	+0,5
<b>Education</b>	2,19	132,5	132,5	144,4	+9,0	+9,0
<b>Primary and secondary education</b>	1,28	135,4	135,4	146,9	+8,5	+8,5
<b>Tertiary</b>	0,90	128,3	128,3	140,8	+9,7	+9,7

Index description			Weight	Index (2008=100)			Percentage change	
				Mar 2011	Feb 2012	Mar 2012	Month-on-month	Year-on-year
<b>Restaurants and hotels</b>			2,78	123,1	128,3	130,5	+1,7	+6,0
	<b>Restaurants</b>		1,85	123,3	129,2	130,8	+1,2	+6,1
	<b>Hotels</b>		0,93	122,8	126,6	129,9	+2,6	+5,8
<b>Miscellaneous goods and services</b>			13,56	123,7	130,0	130,5	+0,4	+5,5
	<b>Personal care</b>		2,20	117,4	118,9	120,2	+1,1	+2,4
	<b>Insurance</b>		7,71	125,6	134,1	134,0	-0,1	+6,7
	<b>Financial services</b>		1,27	124,6	129,2	133,3	+3,2	+7,0
	<b>Other services</b>		2,38	122,9	127,4	127,4	0,0	+3,7

## GLOSSARY

A complete set of definitions is available in the methods and sources document on the Stats SA website

<http://www.statssa.gov.za>

<b>Annual inflation rate</b>	The annual inflation rate is the change in the CPI for all items of the relevant month of the current year compared with the CPI for all items of the same month in the previous year expressed as a percentage.
<b>Annual percentage change</b>	The annual percentage change is the change in the index of the relevant month of the current year compared with the index of the same month in the previous year expressed as a percentage.
<b>Average annual inflation rate</b>	The average annual inflation rate is the change in the average CPI for all items of one year compared with the average CPI for all items of the previous year expressed as a percentage.
<b>Average annual percentage change</b>	The average annual percentage change is the change in the average index of one year compared with the average index of the previous year expressed as a percentage.
<b>CPI for administered prices</b>	An administered price is defined as the price of a product which is set consciously by an individual producer or group of producers and/or any price which can be determined or influenced by government, either directly or through a government agency/institution without reference to market forces. Products and services included are assessment rates, sanitary fees, refuse removal, water, electricity, paraffin, petrol, public transport – trains, motor licences, motor registration, telephone fees, postage, cell calls, television licence, school fees, university/technicons/colleges and university boarding fees.
<b>CPI for regulated prices</b>	Regulated prices are those administered prices that are monitored and controlled by government policy. To this end, price regulation does not necessarily imply the presence of an economic regulator, but the restriction on the extent to which prices may vary, depending on government’s policy objective. Products and services included are water, electricity, paraffin, petrol, telephone fees, postage and cell calls.
<b>Inflation rate</b>	The inflation rate is the change in the CPI for all items of the relevant month of the current year compared with the CPI for all items of the same month in the previous year expressed as a percentage.
<b>Monthly percentage change</b>	The monthly percentage change is the change in the CPI of the relevant month compared with the CPI of the previous month expressed as a percentage.
<b>CPI per expenditure quintile</b>	quintile 1 - up to R 14 564; quintile 2 - R 14 565 up to R 23 278; quintile 3 - R 23 279 up to R 36 755; quintile 4 - R 36 756 up to R 79 152; and quintile 5 - R 79 153 and more.



## FOR MORE INFORMATION

Stats SA publishes approximately 300 different releases each year. It is not economically viable to produce them in more than one of South Africa's eleven official languages. Since the releases are used extensively, not only locally but also by international economic and social-scientific communities, Stats SA releases are published in English only.

Stats SA has copyright on this publication. Users may apply the information as they wish, provided that they acknowledge Stats SA as the source of the basic data wherever they process, apply, utilise, publish or distribute the data: and also that they specify that the relevant application and analysis (where applicable) result from their own processing of data.

### Advance release calendar

An advance release calendar is disseminated on <http://www.statssa.gov.za>

#### Forthcoming issues

Issue	Expected date for publication
April 2012	23 May 2012
May 2012	20 June 2012
June 2012	18 July 2012
July 2012	22 August 2012
August 2012	19 September 2012
September 2012	24 October 2012

### Stats SA products

A complete set of Stats SA publications is available in the Stats SA Library and the following libraries -

- National Library of South Africa, Pretoria Division
- National Library of South Africa, Cape Town Division
- Natal Society Library, Pietermaritzburg
- Library of Parliament, Cape Town
- Bloemfontein Public Library
- Johannesburg Public Library
- Eastern Cape Library Services, King William's Town
- Central Regional Library, Polokwane
- Central Reference Library, Nelspruit
- Central Reference Collection, Kimberley
- Central Reference Library, Mmabatho.

Stats SA also provides a subscription service.

### Electronic services

A large range of data are available via on-line services, diskette and computer printouts. For more details about our electronic data services, contact (012) 310 8600 / 8390 / 8351 / 4892 / 8496 / 8095.

You can visit us on the Internet at: <http://www.statssa.gov.za>

### Enquiries

Technical enquiries:	Marietjie Bennett, Anita Voges (012) 310 8077 / 8151
Telephone number:	(012) 310 8077 / 8151 (survey area) (012) 310 8600 / 8390 / 8351 / 4892 / 8496 / 8095 (user) (012) 310 8161 (publishing) (012) 310 8490 (library)
Fax number:	(012) 310 8502
Email:	<a href="mailto:cpi@statssa.gov.za">cpi@statssa.gov.za</a> (technical enquiries) <a href="mailto:info@statssa.gov.za">info@statssa.gov.za</a> (user information services) <a href="mailto:distribution@statssa.gov.za">distribution@statssa.gov.za</a> (orders)
Postal address:	Private Bag X44, Pretoria, 0001

**Produced by Stats SA**