



stats sa

Department:
Statistics South Africa
REPUBLIC OF SOUTH AFRICA

Private Bag X44, Pretoria, 0001, South Africa, ISibalo House, Koch Street, Salvokop, Pretoria, 0002
www.statssa.gov.za, info@statssa.gov.za, Tel +27 12 310 8911

STATISTICAL RELEASE

P0043.1

Statistics of liquidations (Preliminary)

October 2023

Embargoed until:
27 November 2023
14:30

ENQUIRIES:
Joyce Essel-Mensah
Tel: (012) 310 8255

FORTHCOMING ISSUE:
November 2023

EXPECTED RELEASE DATE:
14 December 2023



Contents

Liquidations: results for October 2023	2
Table A – Key growth rates in the number of liquidations	2
Figure 1 – Number of liquidations.....	2
Tables.....	3
Table 1 – Total liquidations according to industry (number).....	3
Table 1.1 – Liquidations of companies according to industry (number).....	3
Table 1.2 – Liquidations of close corporations according to industry (number)	3
Table 2 – Total liquidations (number)	4
Table 2.1 – Compulsory liquidations (number).....	4
Table 2.2 – Voluntary liquidations (number).....	4
Table 3 – Total liquidations of companies (number).....	5
Table 3.1 – Compulsory liquidations of companies (number)	5
Table 3.2 – Voluntary liquidations of companies (number)	5
Table 4 – Total liquidations of close corporations (number).....	6
Table 4.1 – Compulsory liquidations of close corporations (number)	6
Table 4.2 – Voluntary liquidations of close corporations (number)	6
Explanatory notes	7
Glossary.....	7
Technical enquiries.....	7
General information	8

Liquidations: results for October 2023

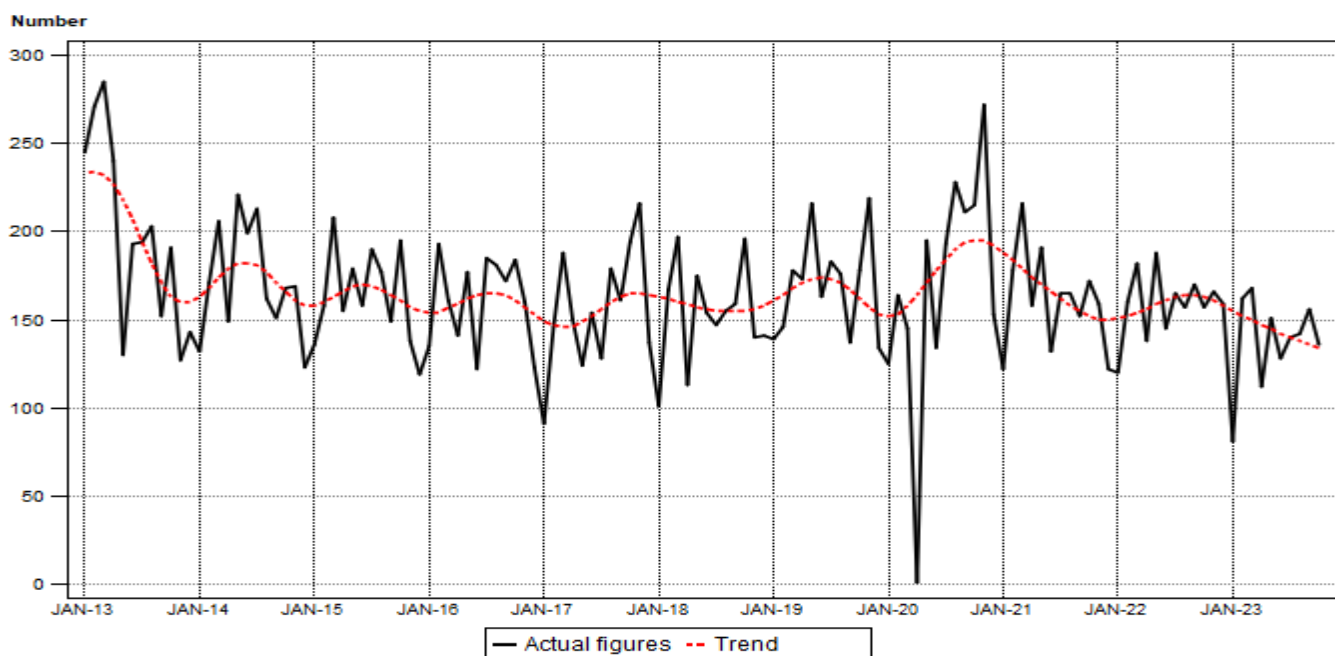
Table A – Key growth rates in the number of liquidations

Number of liquidations October 2023	% change between October 2022 and October 2023	% change between August to October 2022 and August to October 2023	% change between January to October 2022 and January to October 2023
136	-13,4	-10,3	-13,0

The total number of liquidations decreased by 13,4% in October 2023 compared with October 2022. The number of liquidations decreased by 10,3% in the three months ended October 2023 compared with the three months ended October 2022.

The total number of liquidations decreased by 13,0% in the first ten months of 2023 compared with the first ten months of 2022.

Figure 1 – Number of liquidations



**Risenga Maluleke
Statistician-General**

Tables

Table 1 – Total liquidations according to industry (number)

Industry	January – October 2023			October 2022			September 2023			October 2023		
	C	V	Total	C	V	Total	C	V	Total	C	V	Total
1.Agriculture, hunting, forestry and fishing	1	6	7	0	0	0	0	1	1	0	0	0
2.Mining and quarrying	1	5	6	0	1	1	0	1	1	0	0	0
3.Manufacturing	4	41	45	0	4	4	0	5	5	0	3	3
4.Electricity, gas and water	0	2	2	0	2	2	0	0	0	0	1	1
5.Construction	13	55	68	0	8	8	0	3	3	0	5	5
6.Trade, catering and accommodation	25	235	260	7	27	34	5	24	29	2	24	26
7.Transport, storage, communication	0	31	31	0	4	4	0	4	4	0	6	6
8.Financing, insurance, real estate, business services	65	398	463	7	44	51	4	45	49	7	31	38
9.Community, social, personal services	12	90	102	2	8	10	3	15	18	1	12	13
10.Unclassified	61	331	392	11	32	43	6	40	46	6	38	44
Total number of liquidations	182	1 194	1 376	27	130	157	18	138	156	16	120	136

Table 1.1 – Liquidations of companies according to industry (number)

Industry	January – October 2023			October 2022			September 2023			October 2023		
	C	V	Total	C	V	Total	C	V	Total	C	V	Total
1.Agriculture, hunting, forestry and fishing	0	2	2	0	0	0	0	0	0	0	0	0
2.Mining and quarrying	1	3	4	0	1	1	0	0	0	0	0	0
3.Manufacturing	3	12	15	0	2	2	0	1	1	0	1	1
4.Electricity, gas and water	0	1	1	0	1	1	0	0	0	0	1	1
5.Construction	3	11	14	0	0	0	0	0	0	0	2	2
6.Trade, catering and accommodation	13	80	93	2	7	9	2	9	11	1	9	10
7.Transport, storage, communication	0	10	10	0	1	1	0	1	1	0	2	2
8.Financing, insurance, real estate, business services	40	197	237	3	24	27	2	23	25	4	17	21
9.Community, social, personal services	3	13	16	0	3	3	2	4	6	0	1	1
10.Unclassified	56	295	351	10	29	39	6	34	40	6	34	40
Total number of liquidations	119	624	743	15	68	83	12	72	84	11	67	78

Table 1.2 – Liquidations of close corporations according to industry (number)

Industry	January – October 2023			October 2022			September 2023			October 2023		
	C	V	Total	C	V	Total	C	V	Total	C	V	Total
1.Agriculture, hunting, forestry and fishing	1	4	5	0	0	0	0	1	1	0	0	0
2.Mining and quarrying	0	2	2	0	0	0	0	1	1	0	0	0
3.Manufacturing	1	29	30	0	2	2	0	4	4	0	2	2
4.Electricity, gas and water	0	1	1	0	1	1	0	0	0	0	0	0
5.Construction	10	44	54	0	8	8	0	3	3	0	3	3
6.Trade, catering and accommodation	12	155	167	5	20	25	3	15	18	1	15	16
7.Transport, storage, communication	0	21	21	0	3	3	0	3	3	0	4	4
8.Financing, insurance, real estate, business services	25	201	226	4	20	24	2	22	24	3	14	17
9.Community, social, personal services	9	77	86	2	5	7	1	11	12	1	11	12
10.Unclassified	5	36	41	1	3	4	0	6	6	0	4	4
Total number of liquidations	63	570	633	12	62	74	6	66	72	5	53	58

C = Compulsory.

V = Voluntary.

Table 2 – Total liquidations (number)

Month	2017	2018	2019	2020	2021	2022	2023
January	91	101	139	125	122	120	81
February	146	167	146	164	178	160	162
March	188	197	178	145	216	182	168
April	150	113	173	0	158	138	112
May	124	175	216	195	191	188	151
June	154	154	163	134	132	145	128
July	128	147	183	193	165	165	140
August	179	155	176	228	165	157	142
September	161	159	137	211	152	170	156
October	194	196	178	215	172	157	136
November	216	140	219	272	159	166	
December	137	141	134	153	122	159	
Total	1 868	1 845	2 042	2 035	1 932	1 907	

Table 2.1 – Compulsory liquidations (number)

Month	2017	2018	2019	2020	2021	2022	2023
January	6	11	17	29	20	22	7
February	13	26	14	10	12	22	39
March	14	15	10	8	18	25	33
April	4	16	35	0	13	22	13
May	15	8	31	17	20	25	17
June	17	11	24	12	12	15	12
July	10	17	23	17	12	17	13
August	21	23	16	13	10	13	14
September	45	39	11	20	7	20	18
October	32	17	15	36	18	27	16
November	23	9	50	81	20	15	
December	11	7	12	19	8	7	
Total	211	199	258	262	170	230	

Table 2.2 – Voluntary liquidations (number)

Month	2017	2018	2019	2020	2021	2022	2023
January	85	90	122	96	102	98	74
February	133	141	132	154	166	138	123
March	174	182	168	137	198	157	135
April	146	97	138	0	145	116	99
May	109	167	185	178	171	163	134
June	137	143	139	122	120	130	116
July	118	130	160	176	153	148	127
August	158	132	160	215	155	144	128
September	116	120	126	191	145	150	138
October	162	179	163	179	154	130	120
November	193	131	169	191	139	151	
December	126	134	122	134	114	152	
Total	1 657	1 646	1 784	1 773	1 762	1 677	

Table 3 – Total liquidations of companies (number)

Month	2017	2018	2019	2020	2021	2022	2023
January	42	67	64	72	63	85	43
February	81	94	78	83	93	96	91
March	80	92	96	85	111	112	79
April	73	64	89	0	81	61	63
May	56	109	114	110	103	75	91
June	84	74	85	80	68	79	70
July	62	77	108	115	94	95	78
August	94	68	78	135	84	96	66
September	85	65	82	118	83	103	84
October	106	102	98	119	98	83	78
November	107	71	119	150	104	105	
December	88	89	68	97	75	101	
Total	958	972	1 079	1 164	1 057	1 091	

Table 3.1 – Compulsory liquidations of companies (number)

Month	2017	2018	2019	2020	2021	2022	2023
January	3	5	8	16	12	12	4
February	12	22	7	1	5	17	25
March	6	5	5	4	8	16	17
April	3	14	16	0	9	15	9
May	5	5	19	9	14	7	13
June	11	8	13	11	8	10	8
July	4	9	16	12	6	12	13
August	14	15	5	9	6	8	7
September	25	22	6	13	5	14	12
October	23	11	8	21	16	15	11
November	9	8	30	46	9	10	
December	8	4	2	14	7	3	
Total	123	128	135	156	105	139	

Table 3.2 – Voluntary liquidations of companies (number)

Month	2017	2018	2019	2020	2021	2022	2023
January	39	62	56	56	51	73	39
February	69	72	71	82	88	79	66
March	74	87	91	81	103	96	62
April	70	50	73	0	72	46	54
May	51	104	95	101	89	68	78
June	73	66	72	69	60	69	62
July	58	68	92	103	88	83	65
August	80	53	73	126	78	88	59
September	60	43	76	105	78	89	72
October	83	91	90	98	82	68	67
November	98	63	89	104	95	95	
December	80	85	66	83	68	98	
Total	835	844	944	1 008	952	952	

Table 4 – Total liquidations of close corporations (number)

Month	2017	2018	2019	2020	2021	2022	2023
January	49	34	75	53	59	35	38
February	65	73	68	81	85	64	71
March	108	105	82	60	105	70	89
April	77	49	84	0	77	77	49
May	68	66	102	85	88	113	60
June	70	80	78	54	64	66	58
July	66	70	75	78	71	70	62
August	85	87	98	93	81	61	76
September	76	94	55	93	69	67	72
October	88	94	80	96	74	74	58
November	109	69	100	122	55	61	
December	49	52	66	56	47	58	
Total	910	873	963	871	875	816	

Table 4.1 – Compulsory liquidations of close corporations (number)

Month	2017	2018	2019	2020	2021	2022	2023
January	3	6	9	13	8	10	3
February	1	4	7	9	7	5	14
March	8	10	5	4	10	9	16
April	1	2	19	0	4	7	4
May	10	3	12	8	6	18	4
June	6	3	11	1	4	5	4
July	6	8	7	5	6	5	0
August	7	8	11	4	4	5	7
September	20	17	5	7	2	6	6
October	9	6	7	15	2	12	5
November	14	1	20	35	11	5	
December	3	3	10	5	1	4	
Total	88	71	123	106	65	91	

Table 4.2 – Voluntary liquidations of close corporations (number)

Month	2017	2018	2019	2020	2021	2022	2023
January	46	28	66	40	51	25	35
February	64	69	61	72	78	59	57
March	100	95	77	56	95	61	73
April	76	47	65	0	73	70	45
May	58	63	90	77	82	95	56
June	64	77	67	53	60	61	54
July	60	62	68	73	65	65	62
August	78	79	87	89	77	56	69
September	56	77	50	86	67	61	66
October	79	88	73	81	72	62	53
November	95	68	80	87	44	56	
December	46	49	56	51	46	54	
Total	822	802	840	765	810	725	

Explanatory notes

Introduction	1	Statistics South Africa (Stats SA) collects administrative information on liquidations from Companies and Intellectual Property Commission and the Department of Trade, Industry and Competition.
	2	This statistical release reflects voluntary and compulsory liquidations of companies and close corporations.
Purpose of the survey	3	The aggregated data in this release are used by the private and public sectors to measure economic performance and are also an important indicator of the scope of unpaid debt in South Africa.
Scope of the survey	4	This survey covers the total number of companies and close corporations which were liquidated.
Symbols and abbreviations	5	Stats SA – Statistics South Africa.
Seasonal adjustment	6	Seasonally adjusted estimates are generated each month using the X-12-ARIMA Seasonal Adjustment Program developed by the United States Census Bureau. Seasonal adjustment is a means of removing the estimated effects of normal seasonal variation from the series so that the effects of other influences on the series can be recognised more clearly. Seasonal adjustment does not aim to remove irregular or non-seasonal influences which may be present in any particular month.
	7	Influences that are volatile or unsystematic can still make it difficult to interpret the movement of the series even after adjustment for seasonal variations. This means the month-to-month movements of seasonally adjusted estimates may not be reliable indicators of trend behaviour. The X-12-ARIMA procedure for liquidations is described in more detail on the Stats SA website: click to download seasonal adjustment P0043 April 2018.
Trend cycle	8	The trend is the long-term pattern or movement of a time series. The X-12-ARIMA Seasonal Adjustment Program is used for smoothing seasonally adjusted estimates to estimate the underlying trend cycle.

Glossary

Compulsory liquidation	A compulsory liquidation takes place when the affairs of a company or close corporation are wound up by order of the court.
Liquidation	Liquidation refers to the winding-up of the affairs of a company or close corporation when liabilities exceed assets and it can be resolved by voluntary action or by an order of the court.
Voluntary liquidation	A voluntary liquidation takes place when a company or close corporation, by own choice, resolves to wind-up its affairs.

Technical enquiries

Onica Mushwana	Telephone number: (012) 310 4897 Email: onicama@statssa.gov.za
Joyce Essel-Mensah	Telephone number: (012) 310 8255 / 082 888 2374 Email: joycee@statssa.gov.za

General information

Stats SA publishes approximately 300 different statistical releases each year. It is not economically viable to produce them in more than one of South Africa's 12 official languages. Since the releases are used extensively, not only locally but also by international economic and social-scientific communities, Stats SA releases are published in English only.

Stats SA has copyright on this publication. Users may apply the information as they wish, provided that they acknowledge Stats SA as the source of the basic data wherever they process, apply, utilise, publish or distribute the data; and also that they specify that the relevant application and analysis (where applicable) result from their own processing of the data.

Advance release calendar

A release calendar is disseminated on www.statssa.gov.za.

Stats SA products

A complete set of Stats SA publications is available at the Stats SA library and the following libraries:

National Library of South Africa, Pretoria Division
National Library of South Africa, Cape Town Division
Natal Society Library, Pietermaritzburg
Library of Parliament, Cape Town
Bloemfontein Public Library
Johannesburg Public Library
Eastern Cape Library Services, Qonce
Central Regional Library, Polokwane
Central Reference Library, Mbombela
Central Reference Collection, Kimberley
Central Reference Library, Mmabatho

Stats SA also provides a subscription service.

Electronic services

A large range of data is available via online services. For more details about our electronic services, contact Stats SA's user information service at (012) 310 8600.

You can visit us on the internet at: www.statssa.gov.za.

General enquiries

User information services	Telephone number: (012) 310 8600 Email address: info@statssa.gov.za
Orders/subscription services	Telephone number: (012) 310 8619 Email address: millies@statssa.gov.za
Postal address	Private Bag X44, Pretoria, 0001

Produced by Stats SA