

STATISTICAL RELEASE
P0043

Statistics of liquidations and insolvencies
(Preliminary)

September 2016

Embargoed until:
24 October 2016
14:30

ENQUIRIES:
Juan-Pierre Terblanche
012 310 2965

FORTHCOMING ISSUE:
October 2016

EXPECTED RELEASE DATE:
28 November 2016

www.statssa.gov.za
info@statssa.gov.za
T +27 12 310 8911
F +27 12 310 8500

Private Bag X44, Pretoria, 0001, South Africa
ISibalo House, Koch Street, Salvokop, Pretoria, 0002

Contents

Liquidations: results for September 2016	2
Table A – Number of liquidations.....	2
Figure 1 – Number of liquidations.....	2
Insolvencies: results for August 2016	3
Table B – Number of insolvencies	3
Figure 2 – Number of insolvencies	3
Tables.....	4
Table 1 – Total liquidations according to industry (number).....	4
Table 1.1 – Liquidations of companies according to industry (number).....	4
Table 1.2 – Liquidations of close corporations according to industry (number).....	4
Table 2 – Total liquidations (number).....	5
Table 2.1 – Compulsory liquidations (number).....	5
Table 2.2 – Voluntary liquidations (number).....	5
Table 3.1 – Compulsory liquidations of companies (number).....	6
Table 3.2 – Voluntary liquidations of companies (number)	6
Table 4 – Total liquidations of close corporations (number).....	7
Table 4.1 – Compulsory liquidations of close corporations (number).....	7
Table 4.2 – Voluntary liquidations of close corporations (number).....	7
Table 5 – Insolvencies of individuals and partnerships (number).....	8
Explanatory notes.....	9
Glossary	9
General information.....	10

Liquidations: results for September 2016

Table A – Number of liquidations

Number of liquidations September 2016	% change between September 2015 and September 2016	% change between July to September 2015 and July to September 2016	% change between January to September 2015 and January to September 2016
172	15,4	4,3	-2,8

The total number of liquidations increased by 15,4% (23 more cases) in September 2016 compared with September 2015.

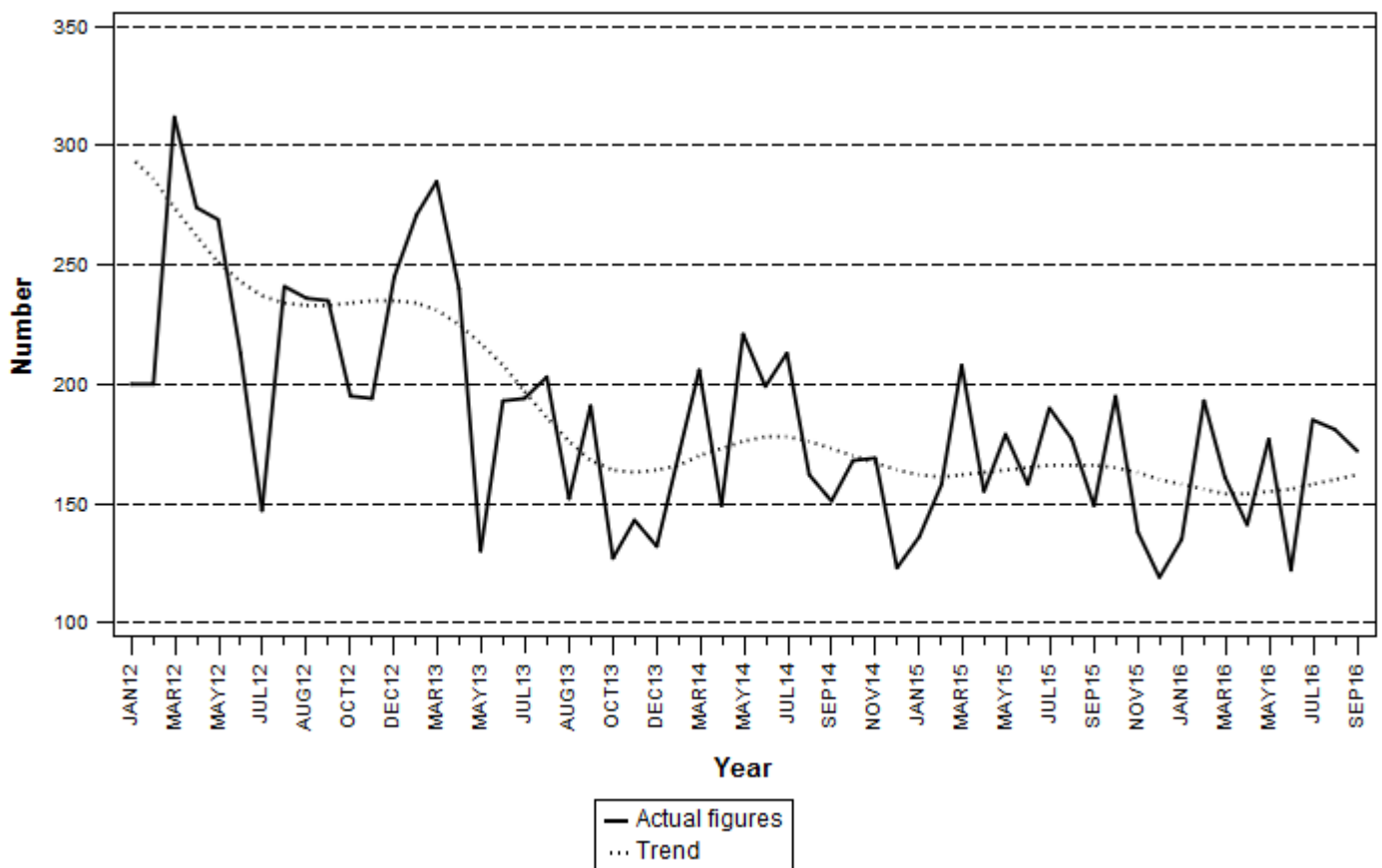
The largest year-on-year increases in total liquidations related to businesses in the following industries:

- unclassified (35 more liquidations); and
- financing, insurance, real estate and business services (14 more liquidations).

Notable decreases were recorded for businesses in the community, social and personal services industry (25 fewer liquidations) and the trade, catering and accommodation industry (21 fewer liquidations) – see Table 1.

Liquidations increased by 4,3% in the third quarter of 2016 compared with the third quarter of 2015.

Figure 1 – Number of liquidations



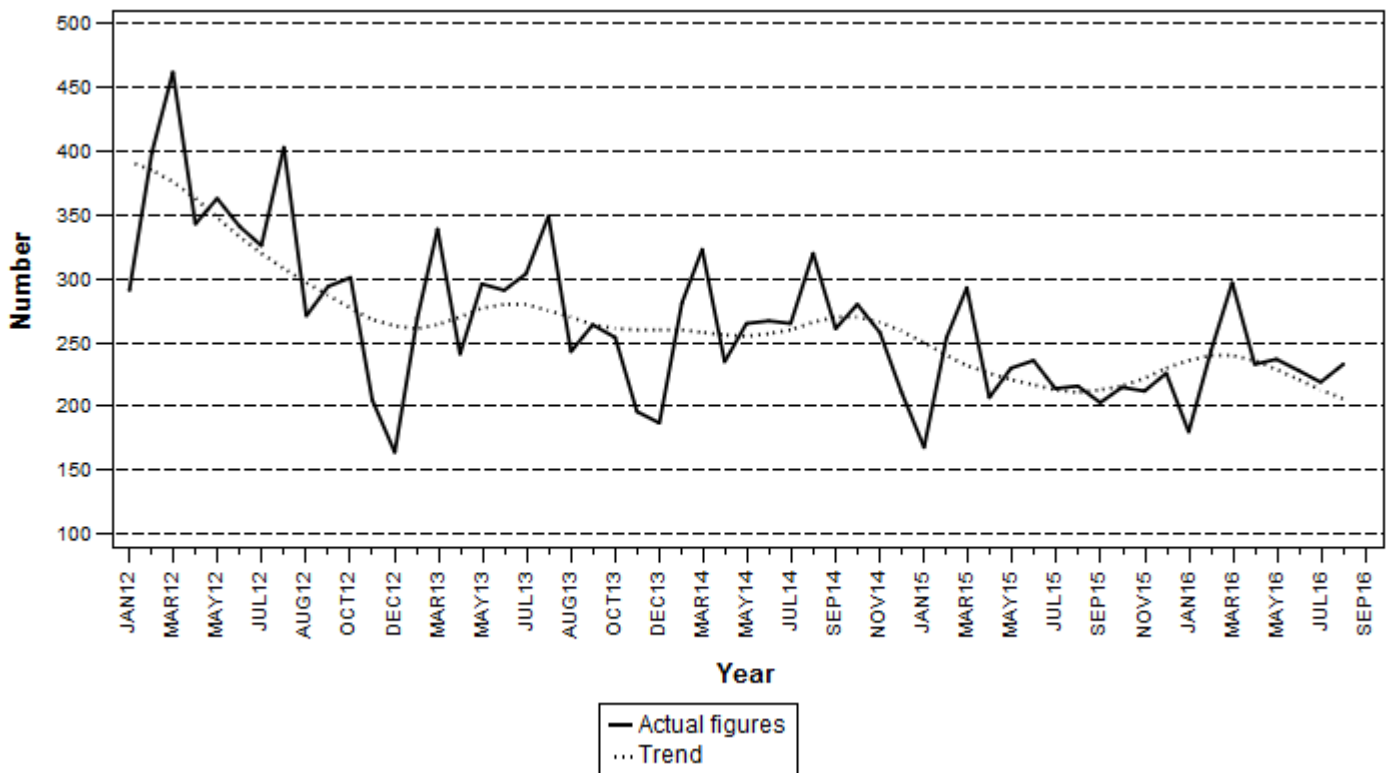
Insolvencies: results for August 2016

Table B – Number of insolvencies

Number of insolvencies August 2016	% change between August 2015 and August 2016	% change between June to August 2015 and June to August 2016	% change between January to August 2015 and January to August 2016
233	7,9	2,1	2,9

The estimated number of insolvencies increased by 7,9% in August 2016 compared with August 2015. A 2,1% increase was estimated between the three months ended August 2015 and the three months ended August 2016. There was an increase of 2,9% in the first eight months of 2016 compared with the first eight months of 2015.

Figure 2 – Number of insolvencies



**PJ Lehohla
Statistician-General**

Tables

Table 1 – Total liquidations according to industry (number)

Industry	January – September 2016			September 2015			August 2016			September 2016		
	C	V	Total	C	V	Total	C	V	Total	C	V	Total
1.Agriculture, hunting, forestry and fishing	4	13	17	0	0	0	0	2	2	0	2	2
2.Mining and quarrying	0	7	7	0	0	0	0	0	0	0	2	2
3.Manufacturing	4	57	61	0	3	3	0	7	7	1	8	9
4.Electricity, gas and water	0	4	4	0	0	0	0	0	0	0	0	0
5.Construction	7	71	78	0	6	6	0	11	11	2	10	12
6.Trade, catering and accommodation	37	299	336	4	49	53	2	44	46	5	27	32
7.Transport, storage, communication	4	27	31	0	1	1	0	5	5	0	5	5
8.Financing, insurance, real estate, business services	57	503	560	8	40	48	3	69	72	10	52	62
9.Community, social, personal services	16	101	117	3	35	38	3	9	12	2	11	13
10.Unclassified	25	231	256	0	0	0	1	25	26	9	26	35
Total number of liquidations	154	1 313	1 467	15	134	149	9	172	181	29	143	172

Table 1.1 – Liquidations of companies according to industry (number)

Industry	January – September 2016			September 2015			August 2016			September 2016		
	C	V	Total	C	V	Total	C	V	Total	C	V	Total
1.Agriculture, hunting, forestry and fishing	1	9	10	0	0	0	0	2	2	0	0	0
2.Mining and quarrying	0	6	6	0	0	0	0	0	0	0	2	2
3.Manufacturing	3	26	29	0	1	1	0	3	3	1	4	5
4.Electricity, gas and water	0	1	1	0	0	0	0	0	0	0	0	0
5.Construction	1	16	17	0	2	2	0	2	2	1	1	2
6.Trade, catering and accommodation	18	117	135	0	23	23	1	23	24	2	9	11
7.Transport, storage, communication	1	10	11	0	0	0	0	0	0	0	3	3
8.Financing, insurance, real estate, business services	34	285	319	3	29	32	2	38	40	5	25	30
9.Community, social, personal services	7	32	39	0	21	21	2	1	3	1	2	3
10.Unclassified	21	187	208	0	0	0	1	22	23	7	22	29
Total number of liquidations	86	689	775	3	76	79	6	91	97	17	68	85

Table 1.2 – Liquidations of close corporations according to industry (number)

Industry	January – September 2016			September 2015			August 2016			September 2016		
	C	V	Total	C	V	Total	C	V	Total	C	V	Total
1.Agriculture, hunting, forestry and fishing	3	4	7	0	0	0	0	0	0	0	2	2
2.Mining and quarrying	0	1	1	0	0	0	0	0	0	0	0	0
3.Manufacturing	1	31	32	0	2	2	0	4	4	0	4	4
4.Electricity, gas and water	0	3	3	0	0	0	0	0	0	0	0	0
5.Construction	6	55	61	0	4	4	0	9	9	1	9	10
6.Trade, catering and accommodation	19	182	201	4	26	30	1	21	22	3	18	21
7.Transport, storage, communication	3	17	20	0	1	1	0	5	5	0	2	2
8.Financing, insurance, real estate, business services	23	218	241	5	11	16	1	31	32	5	27	32
9.Community, social, personal services	9	69	78	3	14	17	1	8	9	1	9	10
10.Unclassified	4	44	48	0	0	0	0	3	3	2	4	6
Total number of liquidations	68	624	692	12	58	70	3	81	84	12	75	87

C = Compulsory.

V = Voluntary.

Table 2 – Total liquidations (number)

Month	2010	2011	2012	2013	2014	2015	2016
January	206	313	200	245	132	136	135
February	328	399	200	271	171	158	193
March	410	350	312	285	206	208	161
April	358	267	274	240	149	155	141
May	384	107	269	130	221	179	177
June	379	156	213	193	199	158	122
July	281	251	147	194	213	190	185
August	243	302	241	203	162	177	181
September	341	330	236	152	151	149	172
October	393	363	235	191	168	195	
November	344	398	195	127	169	138	
December	325	323	194	143	123	119	
Total	3 992	3 559	2 716	2 374	2 064	1 962	

Table 2.1 – Compulsory liquidations (number)

Month	2010	2011	2012	2013	2014	2015	2016
January	3	45	61	3	22	13	16
February	19	26	27	26	12	22	13
March	23	12	39	53	18	39	14
April	17	16	4	17	35	7	24
May	30	30	3	9	29	20	14
June	12	2	14	16	89	29	10
July	35	8	1	18	47	34	25
August	22	14	63	19	25	23	9
September	20	18	58	13	20	15	29
October	49	61	21	9	33	14	
November	20	74	18	4	23	12	
December	34	75	8	24	13	10	
Total	284	381	317	211	366	238	

Table 2.2 – Voluntary liquidations (number)

Month	2010	2011	2012	2013	2014	2015	2016
January	203	268	139	242	110	123	119
February	309	373	173	245	159	136	180
March	387	338	273	232	188	169	147
April	341	251	270	223	114	148	117
May	354	77	266	121	192	159	163
June	367	154	199	177	110	129	112
July	246	243	146	176	166	156	160
August	221	288	178	184	137	154	172
September	321	312	178	139	131	134	143
October	344	302	214	182	135	181	
November	324	324	177	123	146	126	
December	291	248	186	119	110	109	
Total	3 708	3 178	2 399	2 163	1 698	1 724	

Table 3 – Total liquidations of companies (number)

Month	2010	2011	2012	2013	2014	2015	2016
January	96	156	97	121	74	79	66
February	161	199	75	123	87	80	100
March	177	145	115	147	89	101	78
April	176	97	105	104	78	70	80
May	203	36	130	56	108	87	96
June	194	52	105	96	104	90	65
July	128	81	74	92	109	93	108
August	93	180	133	97	86	87	97
September	136	190	136	82	75	79	85
October	204	167	109	100	78	88	
November	174	152	72	55	75	59	
December	197	151	108	75	65	56	
Total	1 939	1 606	1 259	1 148	1 028	969	

Table 3.1 – Compulsory liquidations of companies (number)

Month	2010	2011	2012	2013	2014	2015	2016
January	3	18	37	3	16	9	9
February	12	16	11	5	7	16	9
March	19	12	11	32	6	18	6
April	13	0	2	10	24	5	17
May	24	3	3	7	20	16	9
June	3	1	14	11	54	22	4
July	25	4	0	9	26	21	9
August	11	0	34	11	20	12	6
September	3	18	41	9	13	3	17
October	38	59	14	4	22	8	
November	15	42	6	2	6	7	
December	30	47	2	14	8	3	
Total	196	220	175	117	222	140	

Table 3.2 – Voluntary liquidations of companies (number)

Month	2010	2011	2012	2013	2014	2015	2016
January	93	138	60	118	58	70	57
February	149	183	64	118	80	64	91
March	158	133	104	115	83	83	72
April	163	97	103	94	54	65	63
May	179	33	127	49	88	71	87
June	191	51	91	85	50	68	61
July	103	77	74	83	83	72	99
August	82	180	99	86	66	75	91
September	133	172	95	73	62	76	68
October	166	108	95	96	56	80	
November	159	110	66	53	69	52	
December	167	104	106	61	57	53	
Total	1 743	1 386	1 084	1 031	806	829	

Table 4 – Total liquidations of close corporations (number)

Month	2010	2011	2012	2013	2014	2015	2016
January	110	157	103	124	58	57	69
February	167	200	125	148	84	78	93
March	233	205	197	138	117	107	83
April	182	170	169	136	71	85	61
May	181	71	139	74	113	92	81
June	185	104	108	97	95	68	57
July	153	170	73	102	104	97	77
August	150	122	108	106	76	90	84
September	205	140	100	70	76	70	87
October	189	196	126	91	90	107	
November	170	246	123	72	94	79	
December	128	172	86	68	58	63	
Total	2 053	1 953	1 457	1 226	1 036	993	

Table 4.1 – Compulsory liquidations of close corporations (number)

Month	2010	2011	2012	2013	2014	2015	2016
January	0	27	24	0	6	4	7
February	7	10	16	21	5	6	4
March	4	0	28	21	12	21	8
April	4	16	2	7	11	2	7
May	6	27	0	2	9	4	5
June	9	1	0	5	35	7	6
July	10	4	1	9	21	13	16
August	11	14	29	8	5	11	3
September	17	0	17	4	7	12	12
October	11	2	7	5	11	6	
November	5	32	12	2	17	5	
December	4	28	6	10	5	7	
Total	88	161	142	94	144	98	

Table 4.2 – Voluntary liquidations of close corporations (number)

Month	2010	2011	2012	2013	2014	2015	2016
January	110	130	79	124	52	53	62
February	160	190	109	127	79	72	89
March	229	205	169	117	105	86	75
April	178	154	167	129	60	83	54
May	175	44	139	72	104	88	76
June	176	103	108	92	60	61	51
July	143	166	72	93	83	84	61
August	139	108	79	98	71	79	81
September	188	140	83	66	69	58	75
October	178	194	119	86	79	101	
November	165	214	111	70	77	74	
December	124	144	80	58	53	56	
Total	1 965	1 792	1 315	1 132	892	895	

Table 5 – Insolvencies of individuals and partnerships (number)

Month	1/ 2010	1/ 2011	1/ 2012	1/ 2013	2014	1/ 2015	1/ 2016
January	177	161	291	164	187	168	180
February	340	337	399	269	281	254	244
March	397	475	462	339	323	293	297
April	325	289	343	241	235	207	233
May	397	361	363	296	265	230	237
June	351	416	341	291	267	236	228
July	406	371	326	304	265	214	219
August	389	463	403	349	320	216	233
September	417	392	271	243	261	203	
October	392	458	294	264	280	215	
November	397	351	301	254	258	212	
December	336	241	205	196	211	226	
Total	4 324	4 315	3 999	3 210	3 153	2 674	

1/ Preliminary.

Explanatory notes

- | | | |
|----------------------------------|----------|--|
| Introduction | 1 | Statistics South Africa (Stats SA) collects administrative information on liquidations from Companies and Intellectual Property Commission, Department of Trade and Industry, while information on insolvencies is gathered from Notices of the Master of the Supreme Court that appear in the Government Gazette. |
| | 2 | This statistical release reflects voluntary and compulsory liquidations of companies and close corporations and insolvencies of individuals and partnerships. |
| Purpose of the survey | 3 | The aggregated data in this release are used by the private and public sectors to measure economic performance and are also an important indicator of the scope of unpaid debt in South Africa. |
| | 4 | Due to insolvencies figures being available late, the data on insolvencies are published a month later than liquidations. |
| Scope of the survey | 5 | This survey covers the total number of: <ul style="list-style-type: none"> • companies and close corporations which were liquidated; and • individuals and partnerships placed under final sequestration. |
| Symbols and abbreviations | 6 | Stats SA – Statistics South Africa |

Glossary

- | | |
|-------------------------------|---|
| Compulsory liquidation | A compulsory liquidation takes place when the affairs of a company or close corporation are wound up by order of the court. |
| Insolvency | Insolvency refers to an individual or partnership which is unable to pay its debt and is placed under final sequestration. The number of insolvencies does not refer to the number of persons involved, as a partnership which is unable to pay its debt is regarded as one insolvency, irrespective of the number of partners. |
| Liquidation | Liquidation refers to the winding-up of the affairs of a company or close corporation when liabilities exceed assets and it can be resolved by voluntary action or by an order of the court. |
| Voluntary liquidation | A voluntary liquidation takes place when a company or close corporation, by own choice, resolves to wind-up its affairs. |

General information

Stats SA publishes approximately 300 different statistical releases each year. It is not economically viable to produce them in more than one of South Africa's eleven official languages. Since the releases are used extensively, not only locally but also by international economic and social-scientific communities, Stats SA releases are published in English only.

Stats SA has copyright on this publication. Users may apply the information as they wish, provided that they acknowledge Stats SA as the source of the basic data wherever they process, apply, utilise, publish or distribute the data; and also that they specify that the relevant application and analysis (where applicable) result from their own processing of the data.

Stats SA products

A complete set of Stats SA publications is available at the Stats SA library and the following libraries:

National Library of South Africa, Pretoria Division
National Library of South Africa, Cape Town Division
Natal Society Library, Pietermaritzburg
Library of Parliament, Cape Town
Bloemfontein Public Library
Johannesburg Public Library
Eastern Cape Library Services, King William's Town
Central Regional Library, Polokwane
Central Reference Library, Mbombela
Central Reference Collection, Kimberley
Central Reference Library, Mmabatho

Stats SA also provides a subscription service.

Electronic services

A large range of data is available via online services. For more detail about our electronic services, contact Stats SA's user information service at (012) 310 8600.

You can visit us on the Internet at: www.statssa.gov.za

Enquiries

Telephone number: (012) 310 4897 (technical enquiries)
(012) 310 8600 (user information services)

Fax number: (012) 310 8332 (technical enquiries)

email: onicama@statssa.gov.za (technical enquiries)
info@statssa.gov.za (user information services)
magdaj@statssa.gov.za (orders/subscription services)

Postal address: Private Bag X44, Pretoria, 0001

Produced by Stats SA