



**Statistics  
South Africa**



your leading partner in quality statistics

---

# Statistical release

## P0043

# Statistics of liquidations and insolvencies (Preliminary)

**October 2012**

**Embargoed until:  
26 November 2012  
14:30**

**Enquiries:**

---

User Information Services  
Tel: (012) 310 8600

**Forthcoming issue:**

---

November 2012

**Expected release date:**

---

13 December 2012

## Contents

<b>Liquidations: results for October 2012 .....</b>	<b>2</b>
Table A – Number of liquidations.....	2
Figure 1 – Number of liquidations.....	2
<b>Insolvencies: results for September 2012 .....</b>	<b>3</b>
Table B – Number of insolvencies.....	3
Figure 2 – Number of insolvencies .....	3
<b>Tables.....</b>	<b>4</b>
Table 1 – Total liquidations according to industry (number) .....	4
Table 1.1 – Liquidations of companies according to industry (number) .....	4
Table 1.2 – Liquidations of close corporations according to industry (number) .....	4
Table 2 – Total liquidations (number) .....	5
Table 2.1 – Compulsory liquidations (number).....	5
Table 2.2 – Voluntary liquidations (number).....	5
Table 3 – Total liquidations of companies (number).....	6
Table 3.1 – Compulsory liquidations of companies (number).....	6
Table 3.2 – Voluntary liquidations of companies (number).....	6
Table 4 – Total liquidations of close corporations (number) .....	7
Table 4.1 – Compulsory liquidations of close corporations (number).....	7
Table 4.2 – Voluntary liquidations of close corporations (number).....	7
Table 5 – Insolvencies of individuals and partnerships (number).....	8
<b>Explanatory notes.....</b>	<b>9</b>
<b>Glossary .....</b>	<b>9</b>
<b>General information.....</b>	<b>10</b>

**Liquidations: results for October 2012**

**Table A – Number of liquidations**

Number of liquidations October 2012	% change between October 2011 and October 2012	% change between August to October 2011 and August to October 2012	% change between January to October 2011 and January to October 2012
235	-35,3	-28,4	-18,0

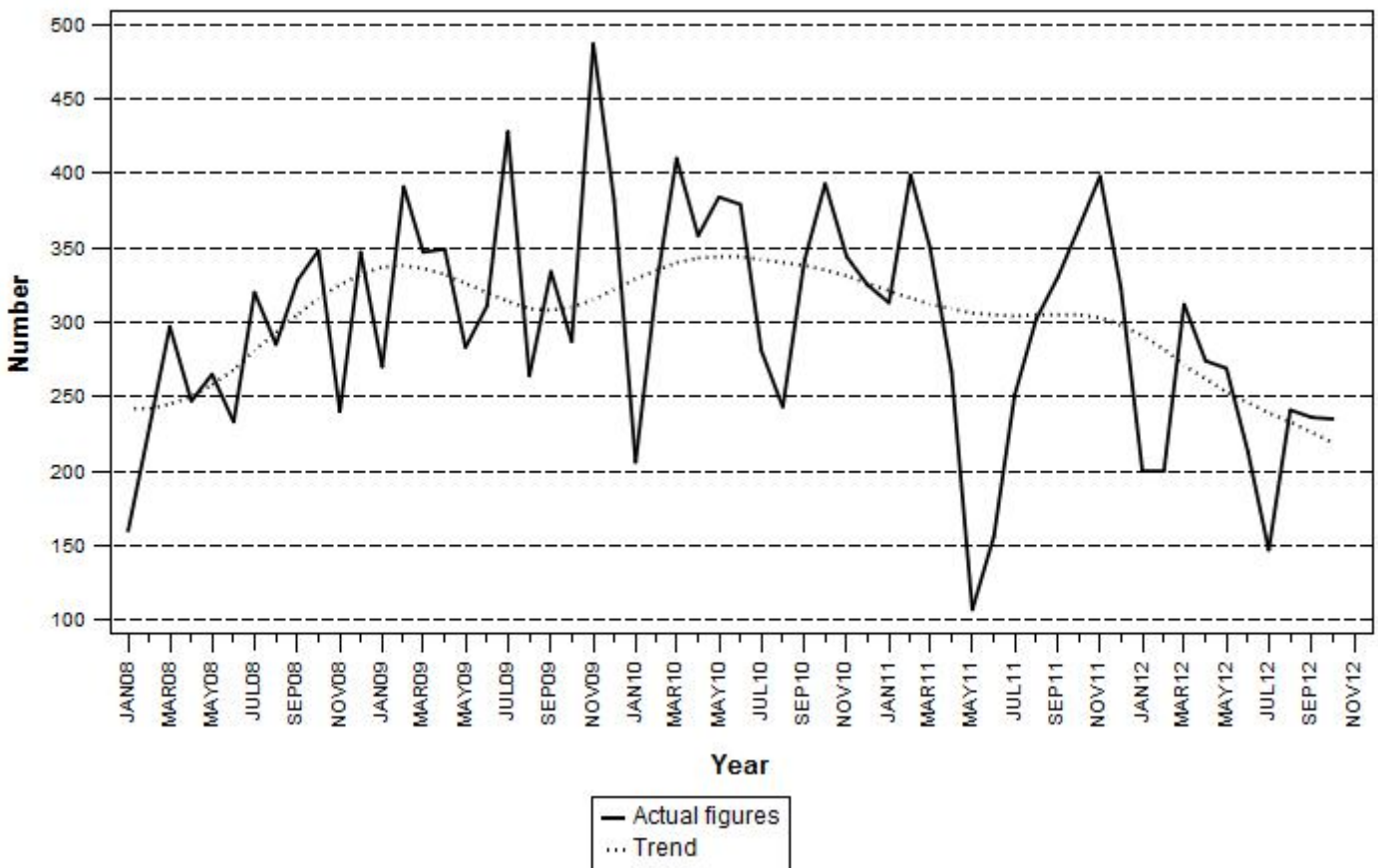
The number of liquidations decreased by 18,0% in the first ten months of 2012 compared with the first ten months of 2011. A year-on-year decrease of 35,3% was recorded in October 2012.

The 35,3% decrease in the number of liquidations for October 2012 was due to voluntary liquidations (which decreased by 88) and compulsory liquidations (which decreased by 40). Close corporation liquidations decreased by 70 and company liquidations decreased by 58 over this period.

The largest year-on-year decreases in total liquidations in October 2012 related to businesses in the following industries:

- financing, insurance, real estate and business services (52 fewer liquidations);
- wholesale and retail trade, catering and accommodation (49 fewer liquidations); and
- community, social and personal services (20 fewer liquidations).

**Figure 1 – Number of liquidations**



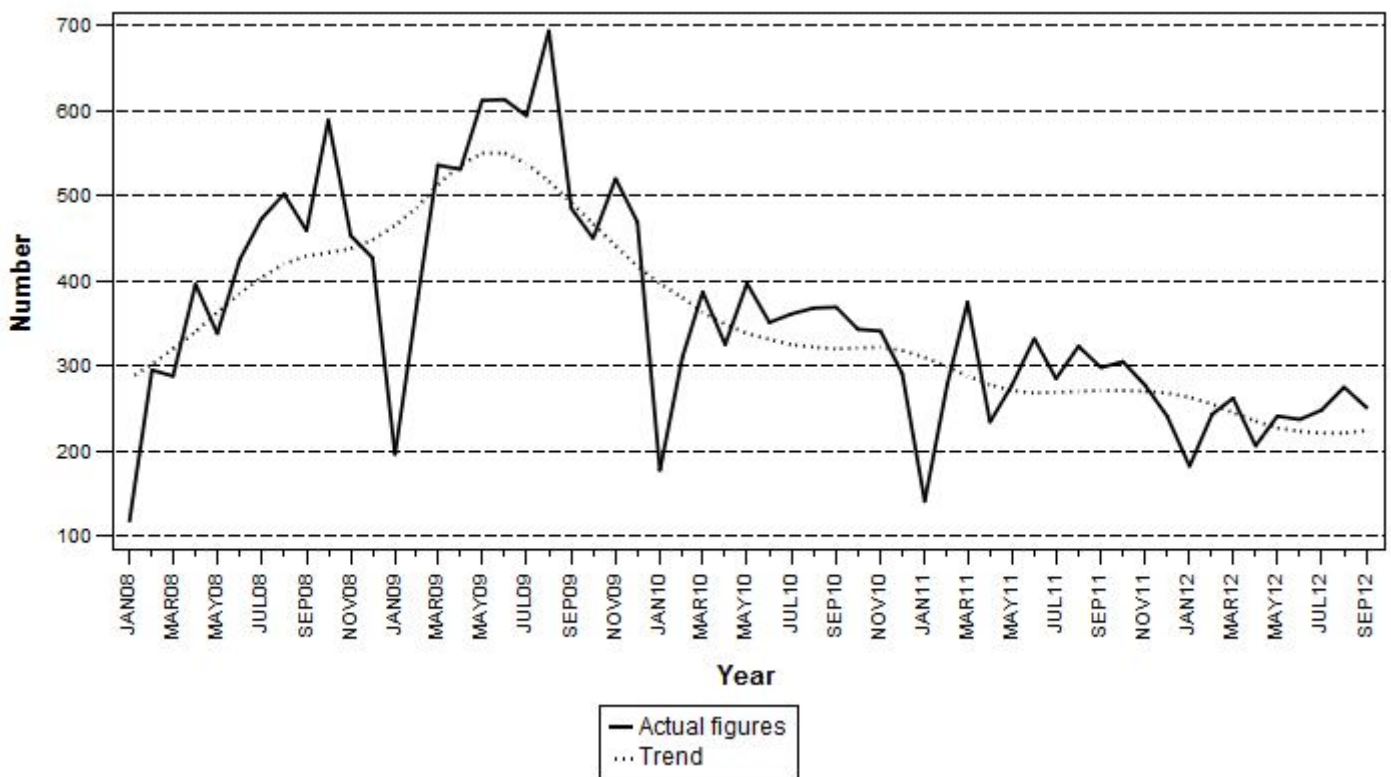
## Insolvencies: results for September 2012

**Table B – Number of insolvencies**

Number of insolvencies September 2012	% change between September 2011 and September 2012	% change between July to September 2011 and July to September 2012	% change between January to September 2011 and January to September 2012
251	-15,8	-14,6	-15,7

The number of insolvencies decreased by 15,7% in the first nine months of 2012 compared with the same period of 2011. A 14,6% decrease was estimated in the third quarter of 2012 compared with the third quarter of 2011. The number of insolvencies in September 2012 decreased by 15,8% year-on-year.

**Figure 2 – Number of insolvencies**



**PJ Lehohla**  
**Statistician-General**

**Tables**

**Table 1 – Total liquidations according to industry (number)**

Industry	January - October 2012			October 2011			September 2012			October 2012		
	C	V	Total	C	V	Total	C	V	Total	C	V	Total
1.Agriculture, hunting, forestry and fishing	5	31	36	0	0	0	0	1	1	0	2	2
2.Mining and quarrying	3	14	17	0	0	0	0	0	0	0	1	1
3.Manufacturing	14	87	101	6	12	18	1	1	2	0	12	12
4.Electricity, gas and water	2	9	11	0	4	4	1	0	1	0	0	0
5.Construction	18	109	127	2	21	23	4	11	15	2	18	20
6.Wholesale and retail trade, catering and accommodation	74	517	591	29	97	126	19	44	63	4	73	77
7.Transport, storage, communication	33	106	139	0	7	7	5	4	9	3	7	10
8.Financing, insurance, real estate, business services	105	824	929	16	124	140	18	84	102	10	78	88
9.Community, social, personal services	37	339	376	8	37	45	10	33	43	2	23	25
<b>Total number of liquidations</b>	<b>291</b>	<b>2 036</b>	<b>2 327</b>	<b>61</b>	<b>302</b>	<b>363</b>	<b>58</b>	<b>178</b>	<b>236</b>	<b>21</b>	<b>214</b>	<b>235</b>

**Table 1.1 – Liquidations of companies according to industry (number)**

Industry	January - October 2012			October 2011			September 2012			October 2012		
	C	V	Total	C	V	Total	C	V	Total	C	V	Total
1.Agriculture, hunting, forestry and fishing	4	9	13	0	0	0	0	0	0	0	0	0
2.Mining and quarrying	3	11	14	0	0	0	0	0	0	0	1	1
3.Manufacturing	7	22	29	6	3	9	1	0	1	0	4	4
4.Electricity, gas and water	2	3	5	0	0	0	1	0	1	0	0	0
5.Construction	5	20	25	2	5	7	3	1	4	0	2	2
6.Wholesale and retail trade, catering and accommodation	60	247	307	29	34	63	18	28	46	4	35	39
7.Transport, storage, communication	4	16	20	0	1	1	0	1	1	0	5	5
8.Financing, insurance, real estate, business services	69	444	513	16	49	65	16	53	69	10	35	45
9.Community, social, personal services	13	140	153	6	16	22	2	12	14	0	13	13
<b>Total number of liquidations</b>	<b>167</b>	<b>912</b>	<b>1 079</b>	<b>59</b>	<b>108</b>	<b>167</b>	<b>41</b>	<b>95</b>	<b>136</b>	<b>14</b>	<b>95</b>	<b>109</b>

**Table 1.2 – Liquidations of close corporations according to industry (number)**

Industry	January - October 2012			October 2011			September 2012			October 2012		
	C	V	Total	C	V	Total	C	V	Total	C	V	Total
1.Agriculture, hunting, forestry and fishing	1	22	23	0	0	0	0	1	1	0	2	2
2.Mining and quarrying	0	3	3	0	0	0	0	0	0	0	0	0
3.Manufacturing	7	65	72	0	9	9	0	1	1	0	8	8
4.Electricity, gas and water	0	6	6	0	4	4	0	0	0	0	0	0
5.Construction	13	89	102	0	16	16	1	10	11	2	16	18
6.Wholesale and retail trade, catering and accommodation	14	270	284	0	63	63	1	16	17	0	38	38
7.Transport, storage, communication	29	90	119	0	6	6	5	3	8	3	2	5
8.Financing, insurance, real estate, business services	36	380	416	0	75	75	2	31	33	0	43	43
9.Community, social, personal services	24	199	223	2	21	23	8	21	29	2	10	12
<b>Total number of liquidations</b>	<b>124</b>	<b>1 124</b>	<b>1 248</b>	<b>2</b>	<b>194</b>	<b>196</b>	<b>17</b>	<b>83</b>	<b>100</b>	<b>7</b>	<b>119</b>	<b>126</b>

C = Compulsory.

V = Voluntary.

**Table 2 – Total liquidations (number)**

Month	2006	2007	2008	2009	2010	2011	2012
January	171	176	160	270	206	313	200
February	213	192	230	391	328	399	200
March	241	241	297	347	410	350	312
April	198	236	247	349	358	267	274
May	311	273	265	283	384	107	269
June	262	181	233	311	379	156	213
July	261	272	320	428	281	251	147
August	333	387	285	264	243	302	241
September	238	507	328	334	341	330	236
October	219	286	348	287	393	363	235
November	313	194	240	487	344	398	
December	266	206	347	382	325	323	
<b>Total</b>	<b>3 026</b>	<b>3 151</b>	<b>3 300</b>	<b>4 133</b>	<b>3 992</b>	<b>3 559</b>	

**Table 2.1 – Compulsory liquidations (number)**

Month	2006	2007	2008	2009	2010	2011	2012
January	37	12	29	54	3	45	61
February	15	15	15	26	19	26	27
March	31	12	41	10	23	12	39
April	9	32	22	41	17	16	4
May	20	13	26	26	30	30	3
June	50	9	17	20	12	2	14
July	16	14	13	37	35	8	1
August	46	111	26	49	22	14	63
September	22	47	22	2	20	18	58
October	20	39	48	17	49	61	21
November	56	13	15	12	20	74	
December	53	9	2	1	34	75	
<b>Total</b>	<b>375</b>	<b>326</b>	<b>276</b>	<b>295</b>	<b>284</b>	<b>381</b>	

**Table 2.2 – Voluntary liquidations (number)**

Month	2006	2007	2008	2009	2010	2011	2012
January	134	164	131	216	203	268	139
February	198	177	215	365	309	373	173
March	210	229	256	337	387	338	273
April	189	204	225	308	341	251	270
May	291	260	239	257	354	77	266
June	212	172	216	291	367	154	199
July	245	258	307	391	246	243	146
August	287	276	259	215	221	288	178
September	216	460	306	332	321	312	178
October	199	247	300	270	344	302	214
November	257	181	225	475	324	324	
December	213	197	345	381	291	248	
<b>Total</b>	<b>2 651</b>	<b>2 825</b>	<b>3 024</b>	<b>3 838</b>	<b>3 708</b>	<b>3 178</b>	

**Table 3 – Total liquidations of companies (number)**

Month	2006	2007	2008	2009	2010	2011	2012
January	85	99	87	114	96	156	97
February	107	96	117	229	161	199	75
March	127	114	108	152	177	145	115
April	100	143	104	148	176	97	105
May	131	157	108	109	203	36	130
June	140	104	100	147	194	52	105
July	145	129	170	201	128	81	74
August	143	243	98	100	93	180	133
September	122	416	177	162	136	190	136
October	132	175	165	136	204	167	109
November	183	94	111	161	174	152	
December	167	127	228	230	197	151	
<b>Total</b>	<b>1 582</b>	<b>1 897</b>	<b>1 573</b>	<b>1 889</b>	<b>1 939</b>	<b>1 606</b>	

**Table 3.1 – Compulsory liquidations of companies (number)**

Month	2006	2007	2008	2009	2010	2011	2012
January	18	4	8	18	3	18	37
February	4	4	15	11	12	16	11
March	23	5	10	8	19	12	11
April	5	19	8	27	13	0	2
May	5	3	17	9	24	3	3
June	35	2	6	14	3	1	14
July	6	4	4	20	25	4	0
August	11	89	6	10	11	0	34
September	18	34	3	1	3	18	41
October	13	26	34	10	38	59	14
November	43	7	10	3	15	42	
December	37	8	1	0	30	47	
<b>Total</b>	<b>218</b>	<b>205</b>	<b>122</b>	<b>131</b>	<b>196</b>	<b>220</b>	

**Table 3.2 – Voluntary liquidations of companies (number)**

Month	2006	2007	2008	2009	2010	2011	2012
January	67	95	79	96	93	138	60
February	103	92	102	218	149	183	64
March	104	109	98	144	158	133	104
April	95	124	96	121	163	97	103
May	126	154	91	100	179	33	127
June	105	102	94	133	191	51	91
July	139	125	166	181	103	77	74
August	132	154	92	90	82	180	99
September	104	382	174	161	133	172	95
October	119	149	131	126	166	108	95
November	140	87	101	158	159	110	
December	130	119	227	230	167	104	
<b>Total</b>	<b>1 364</b>	<b>1 692</b>	<b>1 451</b>	<b>1 758</b>	<b>1 743</b>	<b>1 386</b>	

**Table 4 – Total liquidations of close corporations (number)**

Month	2006	2007	2008	2009	2010	2011	2012
January	86	77	73	156	110	157	103
February	106	96	113	162	167	200	125
March	114	127	189	195	233	205	197
April	98	93	143	201	182	170	169
May	180	116	157	174	181	71	139
June	122	77	133	164	185	104	108
July	116	143	150	227	153	170	73
August	190	144	187	164	150	122	108
September	116	91	151	172	205	140	100
October	87	111	183	151	189	196	126
November	130	100	129	326	170	246	
December	99	79	119	152	128	172	
<b>Total</b>	<b>1 444</b>	<b>1 254</b>	<b>1 727</b>	<b>2 244</b>	<b>2 053</b>	<b>1 953</b>	

**Table 4.1 – Compulsory liquidations of close corporations (number)**

Month	2006	2007	2008	2009	2010	2011	2012
January	19	8	21	36	0	27	24
February	11	11	0	15	7	10	16
March	8	7	31	2	4	0	28
April	4	13	14	14	4	16	2
May	15	10	9	17	6	27	0
June	15	7	11	6	9	1	0
July	10	10	9	17	10	4	1
August	35	22	20	39	11	14	29
September	4	13	19	1	17	0	17
October	7	13	14	7	11	2	7
November	13	6	5	9	5	32	
December	16	1	1	1	4	28	
<b>Total</b>	<b>157</b>	<b>121</b>	<b>154</b>	<b>164</b>	<b>88</b>	<b>161</b>	

**Table 4.2 – Voluntary liquidations of close corporations (number)**

Month	2006	2007	2008	2009	2010	2011	2012
January	67	69	52	120	110	130	79
February	95	85	113	147	160	190	109
March	106	120	158	193	229	205	169
April	94	80	129	187	178	154	167
May	165	106	148	157	175	44	139
June	107	70	122	158	176	103	108
July	106	133	141	210	143	166	72
August	155	122	167	125	139	108	79
September	112	78	132	171	188	140	83
October	80	98	169	144	178	194	119
November	117	94	124	317	165	214	
December	83	78	118	151	124	144	
<b>Total</b>	<b>1 287</b>	<b>1 133</b>	<b>1 573</b>	<b>2 080</b>	<b>1 965</b>	<b>1 792</b>	



**Table 5 – Insolvencies of individuals and partnerships (number)**

<b>Month</b>	<b>2006</b>	<b>2007</b>	<b>2008</b>	<b>2009</b>	<b>2010</b>	<b>1/ 2011</b>	<b>1/ 2012</b>
January	86	79	118	196	177	141	182
February	146	175	295	378	310	278	243
March	164	173	288	536	387	375	262
April	105	155	396	531	325	234	206
May	146	201	338	612	397	277	241
June	144	163	425	613	351	332	237
July	118	184	473	594	361	285	248
August	185	213	502	694	368	323	275
September	140	206	459	485	369	298	251
October	172	231	589	450	343	305	
November	162	302	453	520	341	277	
December	112	232	427	469	291	241	
<b>Total</b>	<b>1 680</b>	<b>2 314</b>	<b>4 763</b>	<b>6 078</b>	<b>4 020</b>	<b>3 366</b>	

1/ Preliminary.

## Explanatory notes

- |                                  |          |   |
|----------------------------------|----------|---|
| <b>Introduction</b>              | <b>1</b> | Statistics South Africa (Stats SA) collects administrative information on liquidations from the Registrar of Companies and Close Corporations, Department of Trade and Industry, while information on insolvencies is gathered from Notices of the Master of the Supreme Court which appears in the Government Gazette. |
|                                  | <b>2</b> | This statistical release reflects voluntary and compulsory liquidations of companies and close corporations and insolvencies of individuals and partnerships.   |
| <b>Purpose of the survey</b>     | <b>3</b> | The aggregated data in this release are used by the private and public sectors to measure economic performance and are also an important indicator of the scope of unpaid debt in South Africa.   |
|                                  | <b>4</b> | Due to insolvencies figures being available late, the data on insolvencies are published a month later than liquidations.   |
| <b>Scope of the survey</b>       | <b>5</b> | This survey covers the total number of: <ul style="list-style-type: none"> <li>• companies and close corporations which were liquidated; and</li> <li>• individuals and partnerships placed under final sequestration.</li> </ul>   |
| <b>Related publications</b>      | <b>6</b> | Users may also wish to refer to the following publications which are available from Stats SA: <ul style="list-style-type: none"> <li>• Bulletin of Statistics; and</li> <li>• SA Statistics.</li> </ul>   |
| <b>Symbols and abbreviations</b> | <b>7</b> | Stats SA – Statistics South Africa  |

## Glossary

- |                               |   |
|-------------------------------|---|
| <b>Compulsory liquidation</b> | A compulsory liquidation takes place when the affairs of a company or close corporation are wound up by order of the court.   |
| <b>Insolvency</b>             | Insolvency refers to an individual or partnership which is unable to pay its debt and is placed under final sequestration. The number of insolvencies does not refer to the number of persons involved, as a partnership which is unable to pay its debt is regarded as one insolvency, irrespective of the number of partners. |
| <b>Liquidation</b>            | Liquidation refers to the winding-up of the affairs of a company or close corporation when liabilities exceed assets and it can be resolved by voluntary action or by an order of the court.  |
| <b>Voluntary liquidation</b>  | A voluntary liquidation takes place when a company or close corporation, by own choice, resolves to wind-up its affairs.  |

## General information

Stats SA publishes approximately 300 different statistical releases each year. It is not economically viable to produce them in more than one of South Africa's eleven official languages. Since the releases are used extensively, not only locally but also by international economic and social-scientific communities, Stats SA releases are published in English only.

Stats SA has copyright on this publication. Users may apply the information as they wish, provided that they acknowledge Stats SA as the source of the basic data wherever they process, apply, utilise, publish or distribute the data; and also that they specify that the relevant application and analysis (where applicable) result from their own processing of the data.

## Stats SA products

A complete set of Stats SA publications is available at the Stats SA library and the following libraries:

National Library of South Africa, Pretoria Division  
National Library of South Africa, Cape Town Division  
Natal Society Library, Pietermaritzburg  
Library of Parliament, Cape Town  
Bloemfontein Public Library  
Johannesburg Public Library  
Eastern Cape Library Services, King William's Town  
Central Regional Library, Polokwane  
Central Reference Library, Nelspruit  
Central Reference Collection, Kimberley  
Central Reference Library, Mmabatho

Stats SA also provides a subscription service.

## Electronic services

A large range of data is available via online services. For more detail about our electronic services, contact Stats SA's user information service at (012) 310 8600.

You can visit us on the Internet at: [www.statssa.gov.za](http://www.statssa.gov.za)

## Enquiries

Telephone number: (012) 310 4897 (technical enquiries)  
(012) 310 8600 (user information services)  
(012) 310 8358 (orders/subscription services)

Fax number: (012) 310 8332 (technical enquiries)

email: [onicama@statssa.gov.za](mailto:onicama@statssa.gov.za) (technical enquiries)  
[info@statssa.gov.za](mailto:info@statssa.gov.za) (user information services)  
[magdaj@statssa.gov.za](mailto:magdaj@statssa.gov.za) (orders/subscription services)

Postal address: Private Bag X44, Pretoria, 0001

*Produced by Stats SA*