



**Statistics  
South Africa**

Preferred supplier of quality statistics



# Statistical release

**P0043**

## Statistics of liquidations and insolvencies (Preliminary)

**October 2010**

**Embargoed until:  
22 November 2010  
14:30**

### **Enquiries**

User Information Services

Tel: (012) 310 8600/4892/8390

### **Forthcoming issue**

November 2010

### **Expected release date**

14 December 2010

Statistics South Africa • Mbalo-mbalo dza Afrika Tshipembe • Tinhlayo-tiko ta Afrika-Dzonga • Dipalopalo tsa Aforika Borwa • Ezezibalo zaseNingizimu Afrika  
Dipalopalo tša Afrika Borwa • Dipalopalo tsa Afrika Borwa • Ubalo lwaseMzantsi Afrika • Telubalo eNingizimu Afrika • iNanimbalo leSewula Afrika • Statistiek Suid-Afrika

email: [info@statssa.gov.za](mailto:info@statssa.gov.za)  
[www.statssa.gov.za](http://www.statssa.gov.za)

170 Andries Street • Private Bag X44, 0001 Pretoria, South Africa  
Tel: +27(12) 310 8911, Fax: +27(12) 321 7381

## Contents

<b>Key results for October 2010 .....</b>	<b>2</b>
<b>Detailed results: Tables.....</b>	<b>4</b>
Table 1 – Total number of liquidations according to industry .....	4
Table 1.1 – Number of liquidations of companies according to industry.....	4
Table 1.2 – Number of liquidations of close corporations according to industry .....	4
Table 2 – Total number of liquidations: 2004 to 2010 .....	5
Table 2.1 – Total number of compulsory liquidations: 2004 to 2010 .....	5
Table 2.2 – Total number of voluntary liquidations: 2004 to 2010 .....	5
Table 3 – Number of liquidations of companies: 2004 to 2010.....	6
Table 3.1 – Number of compulsory liquidations of companies: 2004 to 2010.....	6
Table 3.2 – Number of voluntary liquidations of companies: 2004 to 2010 .....	6
Table 4 – Number of liquidations of close corporations: 2004 to 2010 .....	7
Table 4.1 – Number of compulsory liquidations of close corporations: 2004 to 2010.....	7
Table 4.2 – Number of voluntary liquidations of close corporations: 2004 to 2010.....	7
Table 5 – Total number of insolvencies of individuals and partnerships: 2004 to 2010 .....	8
Table 6 – Percentage change between October 2009 and October 2010 regarding the number of liquidations .....	8
Table 7 – Percentage change between the first ten months of 2009 and the first ten months of 2010 regarding the number of liquidations .....	8
Table 8 – Percentage change between September 2009 and September 2010 regarding the number of insolvencies .....	8
Table 9 – Percentage change between the first nine months of 2009 and the first nine months of 2010 regarding the number of insolvencies.....	8
<b>Explanatory notes.....</b>	<b>9</b>
<b>Glossary .....</b>	<b>9</b>
<b>General information.....</b>	<b>10</b>

## Key results for October 2010

**Table A – Total number of liquidations**

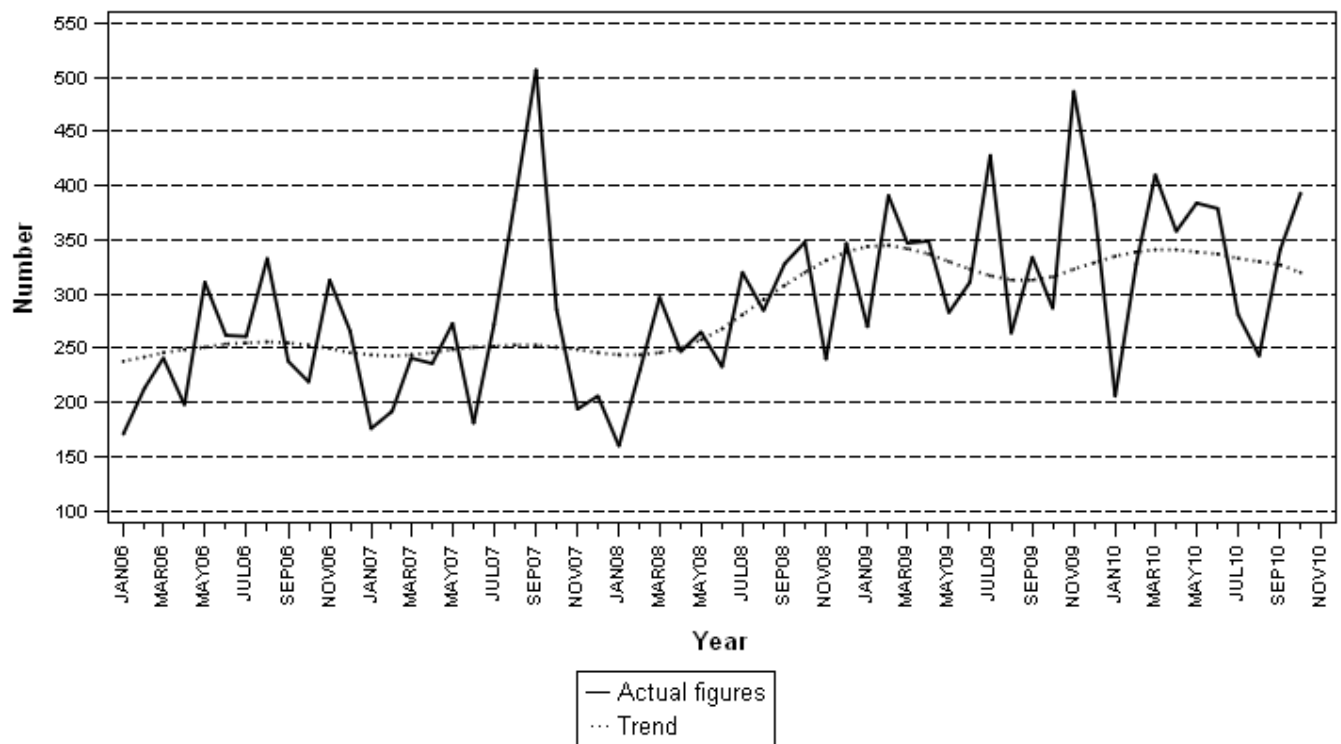
Number of liquidations October 2010	% change between October 2009 and October 2010	% change between August to October 2009 and August to October 2010	% change between January to October 2009 and January to October 2010
393	36,9	10,4	1,8

**The total number of liquidations for the first ten months of 2010 increased by 1,8% (from 3 264 to 3 323) compared with the first ten months of 2009. A year-on-year increase of 36,9% (from 287 to 393) was recorded for October 2010 (see Table A and Tables 6 and 7).**

The 1,8% increase in the total number of liquidations for the first ten months of 2010 was due to an increase of 3,7% in voluntary liquidations (from 2 982 to 3 093) (see Table 2.2). Company liquidations increased by 4,7% (from 1 498 to 1 568) while close corporation liquidations decreased by 0,6% (from 1 766 to 1 755) (see Tables 3 and 4).

The highest numbers of liquidations during the first ten months of 2010 were related to businesses in the financing, insurance, real estate and business services industry (1 527 cases or 46,0% of liquidations) and the wholesale and retail trade, catering and accommodation industry (968 cases or 29,1% of liquidations) (see Table 1).

**Figure 1 – Total number of liquidations**



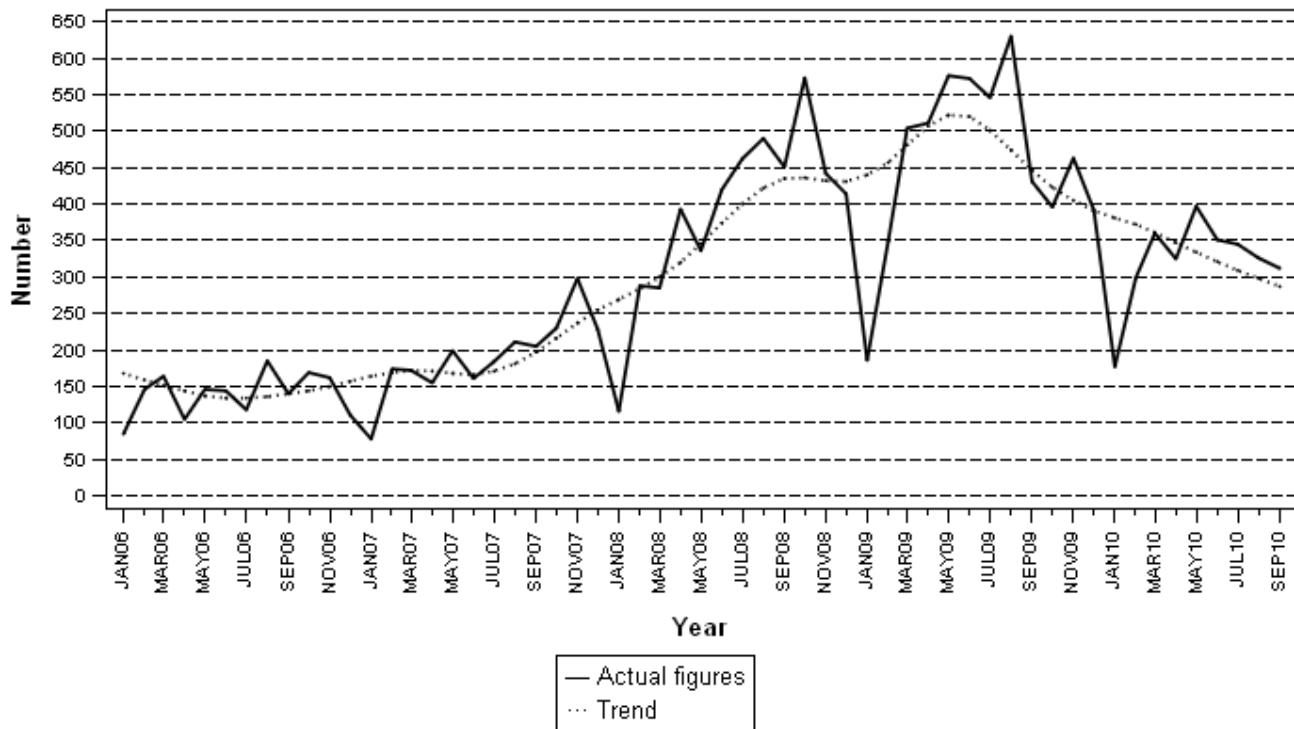
## Key findings regarding insolvencies for September 2010

**Table B – Total number of insolvencies**

Number of insolvencies September 2010	% change between September 2009 and September 2010	% change between July to September 2009 and July to September 2010	% change between January to September 2009 and January to September 2010
312	-27,6	-38,8	-32,8

The total number of insolvencies for the first nine months of 2010 decreased by 32,8% (from 4 305 to 2 892) compared with the first nine months of 2009. A year-on-year decrease of 27,6% (from 431 to 312) was recorded for September 2010 (see Table B and Tables 8 and 9).

**Figure 2 – Total number of insolvencies**



**PJ Lehohla**  
**Statistician-General**

## Detailed results: Tables

**Table 1 – Total number of liquidations according to industry**

Industry	January - October 2010			October 2009			September 2010			October 2010		
	C	V	Total	C	V	Total	C	V	Total	C	V	Total
1.Agriculture, hunting, forestry and fishing	6	36	42	0	3	3	1	1	2	1	6	7
2.Mining and quarrying	4	12	16	0	1	1	1	0	1	2	2	4
3.Manufacturing	8	174	182	0	11	11	0	10	10	1	14	15
4.Electricity, gas and water	2	7	9	0	1	1	0	1	1	0	3	3
5.Construction	10	189	199	1	23	24	2	30	32	0	17	17
6.Wholesale and retail trade, catering and accommodation	75	893	968	6	74	80	7	103	110	14	80	94
7.Transport, storage, communication	3	101	104	2	16	18	0	6	6	0	9	9
8.Financing, insurance, real estate, and business services	98	1 429	1 527	6	116	122	7	147	154	25	180	205
9.Community, social, personal services	24	252	276	2	25	27	2	23	25	6	33	39
<b>Total number of liquidations</b>	<b>230</b>	<b>3 093</b>	<b>3 323</b>	<b>17</b>	<b>270</b>	<b>287</b>	<b>20</b>	<b>321</b>	<b>341</b>	<b>49</b>	<b>344</b>	<b>393</b>

**Table 1.1 – Number of liquidations of companies according to industry**

Industry	January - October 2010			October 2009			September 2010			October 2010		
	C	V	Total	C	V	Total	C	V	Total	C	V	Total
1.Agriculture, hunting, forestry and fishing	5	17	22	0	0	0	0	1	1	1	1	2
2.Mining and quarrying	3	9	12	0	1	1	0	0	0	2	2	4
3.Manufacturing	2	65	67	0	6	6	0	3	3	0	5	5
4.Electricity, gas and water	2	1	3	0	0	0	0	1	1	0	0	0
5.Construction	3	25	28	1	9	10	0	3	3	0	5	5
6.Wholesale and retail trade, catering and accommodation	46	389	435	4	37	41	0	36	36	11	33	44
7.Transport, storage, communication	3	41	44	2	4	6	0	1	1	0	6	6
8.Financing, insurance, real estate and business services	76	770	846	3	61	64	3	74	77	20	98	118
9.Community, social, personal services	11	100	111	0	8	8	0	14	14	4	16	20
<b>Total number of liquidations</b>	<b>151</b>	<b>1 417</b>	<b>1 568</b>	<b>10</b>	<b>126</b>	<b>136</b>	<b>3</b>	<b>133</b>	<b>136</b>	<b>38</b>	<b>166</b>	<b>204</b>

**Table 1.2 – Number of liquidations of close corporations according to industry**

Industry	January - October 2010			October 2009			September 2010			October 2010		
	C	V	Total	C	V	Total	C	V	Total	C	V	Total
1.Agriculture, hunting, forestry and fishing	1	19	20	0	3	3	1	0	1	0	5	5
2.Mining and quarrying	1	3	4	0	0	0	1	0	1	0	0	0
3.Manufacturing	6	109	115	0	5	5	0	7	7	1	9	10
4.Electricity, gas and water	0	6	6	0	1	1	0	0	0	0	3	3
5.Construction	7	164	171	0	14	14	2	27	29	0	12	12
6.Wholesale and retail trade, catering and accommodation	29	504	533	2	37	39	7	67	74	3	47	50
7.Transport, storage, communication	0	60	60	0	12	12	0	5	5	0	3	3
8.Financing, insurance, real estate, and business services	22	659	681	3	55	58	4	73	77	5	82	87
9.Community, social, personal services	13	152	165	2	17	19	2	9	11	2	17	19
<b>Total number of liquidations</b>	<b>79</b>	<b>1 676</b>	<b>1 755</b>	<b>7</b>	<b>144</b>	<b>151</b>	<b>17</b>	<b>188</b>	<b>205</b>	<b>11</b>	<b>178</b>	<b>189</b>

C = Compulsory.  
V = Voluntary.

**Table 2 – Total number of liquidations: 2004 to 2010**

Month	2004	2005	2006	2007	2008	2009	2010
January	388	328	171	176	160	270	206
February	298	296	213	192	230	391	328
March	301	240	241	241	297	347	410
April	244	279	198	236	247	349	358
May	262	265	311	273	265	283	384
June	301	265	262	181	233	311	379
July	291	318	261	272	320	428	281
August	260	273	333	387	285	264	243
September	437	297	238	507	328	334	341
October	253	234	219	286	348	287	393
November	218	234	313	194	240	487	
December	257	196	266	206	347	382	
<b>Year Total</b>	<b>3 510</b>	<b>3 225</b>	<b>3 026</b>	<b>3 151</b>	<b>3 300</b>	<b>4 133</b>	

**Table 2.1 – Total number of compulsory liquidations: 2004 to 2010**

Month	2004	2005	2006	2007	2008	2009	2010
January	42	30	37	12	29	54	3
February	38	70	15	15	15	26	19
March	57	35	31	12	41	10	23
April	32	18	9	32	22	41	17
May	37	61	20	13	26	26	30
June	63	25	50	9	17	20	12
July	68	84	16	14	13	37	35
August	39	69	46	111	26	49	22
September	83	27	22	47	22	2	20
October	43	40	20	39	48	17	49
November	23	47	56	13	15	12	
December	39	18	53	9	2	1	
<b>Year Total</b>	<b>564</b>	<b>524</b>	<b>375</b>	<b>326</b>	<b>276</b>	<b>295</b>	

**Table 2.2 – Total number of voluntary liquidations: 2004 to 2010**

Month	2004	2005	2006	2007	2008	2009	2010
January	346	298	134	164	131	216	203
February	260	226	198	177	215	365	309
March	244	205	210	229	256	337	387
April	212	261	189	204	225	308	341
May	225	204	291	260	239	257	354
June	238	240	212	172	216	291	367
July	223	234	245	258	307	391	246
August	221	204	287	276	259	215	221
September	354	270	216	460	306	332	321
October	210	194	199	247	300	270	344
November	195	187	257	181	225	475	
December	218	178	213	197	345	381	
<b>Year Total</b>	<b>2 946</b>	<b>2 701</b>	<b>2 651</b>	<b>2 825</b>	<b>3 024</b>	<b>3 838</b>	

**Table 3 – Number of liquidations of companies: 2004 to 2010**

Month	2004	2005	2006	2007	2008	2009	2010
January	191	130	85	99	87	114	96
February	132	154	107	96	117	229	161
March	148	123	127	114	108	152	177
April	119	176	100	143	104	148	176
May	128	122	131	157	108	109	203
June	136	132	140	104	100	147	194
July	132	177	145	129	170	201	128
August	114	124	143	243	98	100	93
September	141	143	122	416	177	162	136
October	126	115	132	175	165	136	204
November	90	95	183	94	111	161	
December	75	113	167	127	228	230	
<b>Year Total</b>	<b>1 532</b>	<b>1 604</b>	<b>1 582</b>	<b>1 897</b>	<b>1 573</b>	<b>1 889</b>	

**Table 3.1 – Number of compulsory liquidations of companies: 2004 to 2010**

Month	2004	2005	2006	2007	2008	2009	2010
January	16	6	18	4	8	18	3
February	15	43	4	4	15	11	12
March	32	23	23	5	10	8	19
April	6	13	5	19	8	27	13
May	20	30	5	3	17	9	24
June	16	7	35	2	6	14	3
July	31	62	6	4	4	20	25
August	11	21	11	89	6	10	11
September	33	17	18	34	3	1	3
October	22	22	13	26	34	10	38
November	12	18	43	7	10	3	
December	9	13	37	8	1	0	
<b>Year Total</b>	<b>223</b>	<b>275</b>	<b>218</b>	<b>205</b>	<b>122</b>	<b>131</b>	

**Table 3.2 – Number of voluntary liquidations of companies: 2004 to 2010**

Month	2004	2005	2006	2007	2008	2009	2010
January	175	124	67	95	79	96	93
February	117	111	103	92	102	218	149
March	116	100	104	109	98	144	158
April	113	163	95	124	96	121	163
May	108	92	126	154	91	100	179
June	120	125	105	102	94	133	191
July	101	115	139	125	166	181	103
August	103	103	132	154	92	90	82
September	108	126	104	382	174	161	133
October	104	93	119	149	131	126	166
November	78	77	140	87	101	158	
December	66	100	130	119	227	230	
<b>Year Total</b>	<b>1 309</b>	<b>1 329</b>	<b>1 364</b>	<b>1 692</b>	<b>1 451</b>	<b>1 758</b>	

**Table 4 – Number of liquidations of close corporations: 2004 to 2010**

Month	2004	2005	2006	2007	2008	2009	2010
January	197	198	86	77	73	156	110
February	166	142	106	96	113	162	167
March	153	117	114	127	189	195	233
April	125	103	98	93	143	201	182
May	134	143	180	116	157	174	181
June	165	133	122	77	133	164	185
July	159	141	116	143	150	227	153
August	146	149	190	144	187	164	150
September	296	154	116	91	151	172	205
October	127	119	87	111	183	151	189
November	128	139	130	100	129	326	
December	182	83	99	79	119	152	
<b>Year Total</b>	<b>1 978</b>	<b>1 621</b>	<b>1 444</b>	<b>1 254</b>	<b>1 727</b>	<b>2 244</b>	

**Table 4.1 – Number of compulsory liquidations of close corporations: 2004 to 2010**

Month	2004	2005	2006	2007	2008	2009	2010
January	26	24	19	8	21	36	0
February	23	27	11	11	0	15	7
March	25	12	8	7	31	2	4
April	26	5	4	13	14	14	4
May	17	31	15	10	9	17	6
June	47	18	15	7	11	6	9
July	37	22	10	10	9	17	10
August	28	48	35	22	20	39	11
September	50	10	4	13	19	1	17
October	21	18	7	13	14	7	11
November	11	29	13	6	5	9	
December	30	5	16	1	1	1	
<b>Year Total</b>	<b>341</b>	<b>249</b>	<b>157</b>	<b>121</b>	<b>154</b>	<b>164</b>	

**Table 4.2 – Number of voluntary liquidations of close corporations: 2004 to 2010**

Month	2004	2005	2006	2007	2008	2009	2010
January	171	174	67	69	52	120	110
February	143	115	95	85	113	147	160
March	128	105	106	120	158	193	229
April	99	98	94	80	129	187	178
May	117	112	165	106	148	157	175
June	118	115	107	70	122	158	176
July	122	119	106	133	141	210	143
August	118	101	155	122	167	125	139
September	246	144	112	78	132	171	188
October	106	101	80	98	169	144	178
November	117	110	117	94	124	317	
December	152	78	83	78	118	151	
<b>Year Total</b>	<b>1 637</b>	<b>1 372</b>	<b>1 287</b>	<b>1 133</b>	<b>1 573</b>	<b>2 080</b>	



**Table 5 – Total number of insolvencies of individuals and partnerships: 2004 to 2010**

Month	2004	2005	2006	2007	* 2008	1/ 2009	1/ 2010
January	145	106	85	78	116	186	177
February	143	118	146	174	288	349	299
March	247	148	164	172	285	504	360
April	211	124	105	155	393	511	325
May	153	131	146	199	336	576	397
June	187	141	144	161	420	572	351
July	164	122	118	* 184	462	546	345
August	155	176	185	211	490	630	326
September	182	145	140	205	451	431	312
October	127	134	169	230	573	396	
November	142	166	162	298	442	463	
December	119	131	111	228	414	392	
<b>Year Total</b>	<b>1 975</b>	<b>1 642</b>	<b>1 675</b>	<b>2 295</b>	<b>4 670</b>	<b>5 556</b>	

1/ Preliminary.  
\* Revised.

**Table 6 – Percentage change between October 2009 and October 2010 regarding the number of liquidations**

Number of liquidations October 2009	Number of liquidations October 2010	% change between October 2009 and October 2010	Difference between October 2009 and October 2010
287	393	36,9	106

**Table 7 – Percentage change between the first ten months of 2009 and the first ten months of 2010 regarding the number of liquidations**

Number of liquidations January to October 2009	Number liquidations January to October 2010	% change between January to October 2009 and January to October 2010	Difference between January to October 2009 and January to October 2010
3 264	3 323	1,8	59

**Table 8 – Percentage change between September 2009 and September 2010 regarding the number of insolvencies**

Number of insolvencies September 2009	Number of insolvencies September 2010	% change between September 2009 and September 2010	Difference between September 2009 and September 2010
431	312	-27,6	-119

**Table 9 – Percentage change between the first nine months of 2009 and the first nine months of 2010 regarding the number of insolvencies**

Number of insolvencies January to September 2009	Number of insolvencies January to September 2010	% change between January to September 2009 and January to September 2010	Difference between January to September 2009 and January to September 2010
4 305	2 892	-32,8	-1 413

## Explanatory notes

<b>Introduction</b>	<b>1</b>	Statistics South Africa (Stats SA) collects administrative information on liquidations from the Registrar of Companies and Close Corporations, Department of Trade and Industry, while information on insolvencies is gathered from Notices of the Master of the Supreme Court which appears in the Government Gazette.
	<b>2</b>	This statistical release reflects voluntary and compulsory liquidations of companies and close corporations and insolvencies of individuals and partnerships.
<b>Purpose of the survey</b>	<b>3</b>	The aggregated data in this release are used by the private and public sectors to measure economic performance and are also an important indicator of the scope of unpaid debt in South Africa.
	<b>4</b>	Due to insolvencies figures being available late, the data on insolvencies are published a month later than liquidations.
<b>Scope of the survey</b>	<b>5</b>	This survey covers <ul style="list-style-type: none"> <li>• the total number of companies and close corporations which were liquidated.</li> <li>• the total number of individuals and partnerships placed under final sequestration.</li> </ul>
<b>Related publications</b>	<b>6</b>	Users may also wish to refer to the following publications which are available from Stats SA - <ul style="list-style-type: none"> <li>• <i>Bulletin of Statistics.</i></li> <li>• <i>SA Statistics.</i></li> </ul>
<b>Symbols and abbreviations</b>	<b>7</b>	Stats SA - Statistics South Africa

## Glossary

<b>Compulsory liquidation</b>	A compulsory liquidation takes place when the affairs of a company or close corporation are wound up by order of the court.
<b>Insolvency</b>	Insolvency refers to an individual or partnership which is unable to pay its debt and is placed under final sequestration. The number of insolvencies does not refer to the number of persons involved, as a partnership which is unable to pay its debt is regarded as one insolvency, irrespective of the number of partners.
<b>Liquidation</b>	Liquidation refers to the winding-up of the affairs of a company or close corporation when liabilities exceed assets and it can be resolved by voluntary action or by an order of the court.
<b>Voluntary liquidation</b>	A voluntary liquidation takes place when a company or close corporation, by own choice, resolves to wind-up its affairs.

---

## General information

Stats SA publishes approximately 300 different statistical releases each year. It is not economically viable to produce them in more than one of South Africa's eleven official languages. Since the releases are used extensively, not only locally but also by international economic and social-scientific communities, Stats SA releases are published in English only.

Stats SA has copyright on this publication. Users may apply the information as they wish, provided that they acknowledge Stats SA as the source of the basic data wherever they process, apply, utilise, publish or distribute the data; and also that they specify that the relevant application and analysis (where applicable) result from their own processing of the data.

### Stats SA products

A complete set of Stats SA publications is available at the Stats SA library and the following libraries:

National Library of South Africa, Pretoria Division  
National Library of South Africa, Cape Town Division  
Natal Society Library, Pietermaritzburg  
Library of Parliament, Cape Town  
Bloemfontein Public Library  
Johannesburg Public Library  
Eastern Cape Library Services, King William's Town  
Central Regional Library, Polokwane  
Central Reference Library, Nelspruit  
Central Reference Collection, Kimberley  
Central Reference Library, Mmabatho

Stats SA also provides a subscription service.

### Electronic services

Large ranges of data are available via on-line services, CD and computer printouts. For more details about our electronic data services, contact (012) 310 8600/8390/8351/4892/8496/8095.

You can visit us on the internet at: [www.statssa.gov.za](http://www.statssa.gov.za)

### Enquiries

Telephone number: (012) 310 8600/ 8390/ 8351/ 4892/ 8496/ 8095 (user information services)  
(012) 310 4897 (technical enquiries)  
(012) 310 8358 (orders)  
(012) 310 4883/4885/8018 (library)

Fax number: (012) 310 8332 (technical enquiries)

email: [oisama@statssa.gov.za](mailto:oisama@statssa.gov.za) (technical enquiries)  
[info@statssa.gov.za](mailto:info@statssa.gov.za) (user information services)  
[magdaj@statssa.gov.za](mailto:magdaj@statssa.gov.za) (orders)

Postal address: Private Bag X44, Pretoria, 0001

*Produced by Stats SA*