



**Statistics
South Africa**

Preferred supplier of quality statistics



Statistical release

P0043

Statistics of liquidations and insolvencies (Preliminary)

November 2007

**Embargoed until:
13 December 2007
11:00**

Enquiries

User Information Services

Tel: (012) 310 8600/4892/8390

Forthcoming issue	Expected release date
December 2007	24 January 2008

Contents	Page
SUMMARY OF FINDINGS: LIQUIDATIONS AND INSOLVENCIES (NOVEMBER 2007)	2
Key findings regarding liquidations for November 2007	2
Total number of liquidations increases.....	2
Key figures regarding liquidations for November 2007	2
Table A – Selected key figures regarding liquidations for November 2007.....	2
Figure 1 – Percentage change for the eleven months ended November compared with the corresponding period of the previous year for the number of liquidations from 2001 to 2007.....	2
Figure 2 – Total number of liquidations.....	3
Key findings regarding insolvencies for October 2007	3
Total number of insolvencies decreases.....	3
Key figures regarding insolvencies for October 2007	3
Table B – Selected key figures regarding insolvencies for October 2007.....	3
Figure 3 – Percentage change in the number of insolvencies for the first ten months of the year from 2001 to 2007.....	4
Figure 4 – Total number of insolvencies.....	4
Detailed results: Tables	5
Table 1 – Total number of liquidations according to industry.....	5
Table 2 – Number of liquidations of companies according to industry.....	5
Table 3 – Number of liquidations of close corporations according to industry.....	5
Table 4 – Total number of liquidations: 2001 to 2007.....	6
Table 5 – Total number of compulsory liquidations: 2001 to 2007.....	6
Table 6 – Total number of voluntary liquidations: 2001 to 2007.....	6
Table 7 – Number of liquidations of companies: 2001 to 2007.....	7
Table 8 – Number of compulsory liquidations of companies: 2001 to 2007.....	7
Table 9 – Number of voluntary liquidations of companies: 2001 to 2007.....	7
Table 10 – Number of liquidations of close corporations: 2001 to 2007.....	8
Table 11 – Number of compulsory liquidations of close corporations: 2001 to 2007.....	8
Table 12 – Number of voluntary liquidations of close corporations: 2001 to 2007.....	8
Table 13 – Total number of insolvencies of individuals and partnerships: 2001 to 2007.....	9
Table 14 – Percentage change between November 2007 and the corresponding month of the previous year regarding the number of liquidations.....	9
Table 15 – Percentage change between the first eleven months of 2007 and the first eleven months of 2006 regarding the number of liquidations.....	9
Table 16 – Percentage change between October 2007 and the corresponding month of the previous year regarding the number of insolvencies.....	9
Table 17 – Percentage change between the first ten months of 2007 and the first ten months of 2006 regarding the number of insolvencies.....	9
Explanatory notes	10
Glossary	11
General information	12

SUMMARY OF FINDINGS: LIQUIDATIONS AND INSOLVENCIES (NOVEMBER 2007)

Key findings regarding liquidations for November 2007

Total number of liquidations increases

The total number of liquidations recorded for the eleven months ended November 2007 increased by 6,7% (from 2 760 to 2 945) when compared with the eleven months ended November 2006. This is the first time since November 2003 that an increase in the number of liquidations was reported for the first eleven months of the year. However, the total number of liquidations recorded for November 2007 decreased by 38,0% (from 313 to 194) when compared with November 2006 (see Table A and Table 14).

The increase of 6,7% in the total number of liquidations for the eleven months ended November 2007 compared with the eleven months ended November 2006 was due to an increase of 7,8% in voluntary liquidations (from 2 438 to 2 628).

Key figures regarding liquidations for November 2007

Table A – Selected key figures regarding liquidations for November 2007

Actual estimates

Number of liquidations November 2007	% change between November 2006 and November 2007	% change between January 2006 to November 2006 and January 2007 to November 2007
194	-38,0	6,7

Figure 1 below shows the annual percentage change in the number of liquidations for the eleven months ended November and covers the period from 2001 to 2007. The increase of 6,7% for the eleven months ended November 2007 compared with the eleven months ended November 2006 is the first increase recorded since the last increase of 5,2% during the eleven months ended November 2003.

Figure 1 – Percentage change for the eleven months ended November compared with the corresponding period of the previous year for the number of liquidations from 2001 to 2007

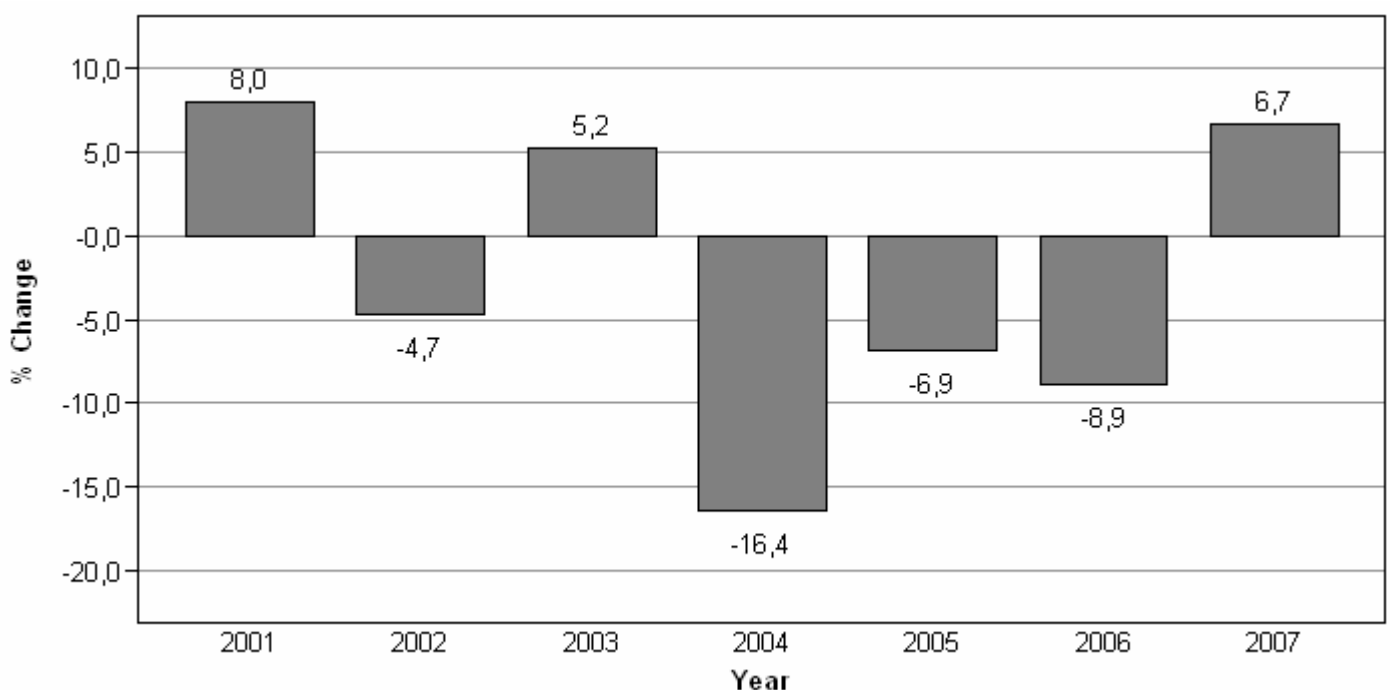
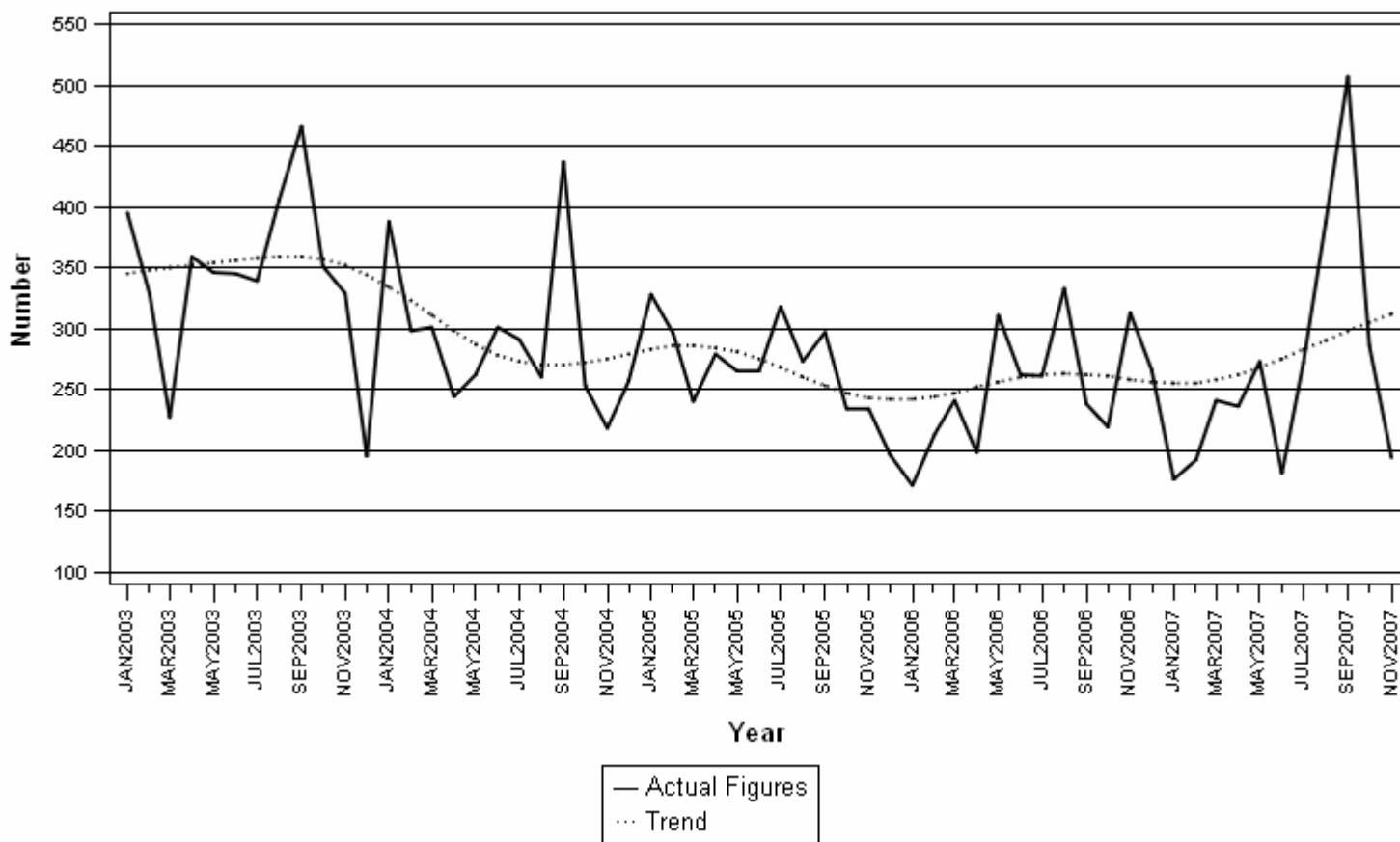


Figure 2 shows that the trend for the total number of liquidations decreased between August 2003 and September 2004 and between April 2005 and January 2006. From January 2007 the trend has been increasing.

Figure 2 – Total number of liquidations



Key findings regarding insolvencies for October 2007

Total number of insolvencies decreases

The total number of insolvencies recorded for the ten months ended October 2007 decreased by 4,9% (from 1 358 to 1 292) compared with the ten months ended October 2006. Furthermore, the total number of insolvencies recorded for October 2007 decreased by 14,5% (from 159 to 136) when compared with October 2006 (see Table B and Table 16).

Key figures regarding insolvencies for October 2007

Table B – Selected key figures regarding insolvencies for October 2007

Actual estimates

Number of insolvencies October 2007	% change between October 2006 and October 2007	% change between January 2006 to October 2006 and January 2007 to October 2007
136	-14,5	-4,9

Figure 3 below shows the annual percentage change in the number of insolvencies for the ten months ended October of each year, compared with the corresponding period of the year before, and covers the period 2001 to 2007. The number of insolvencies decreased by 4,9% for the first ten months of 2007.

Figure 3 – Percentage change in the number of insolvencies for the first ten months of the year from 2001 to 2007

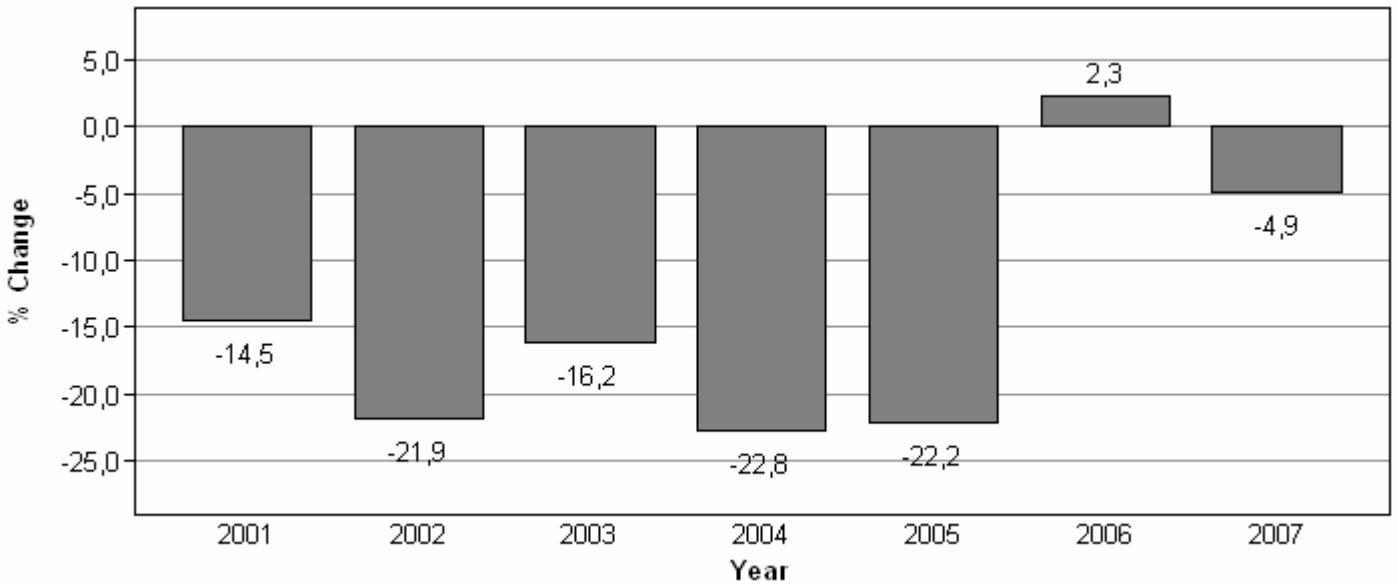
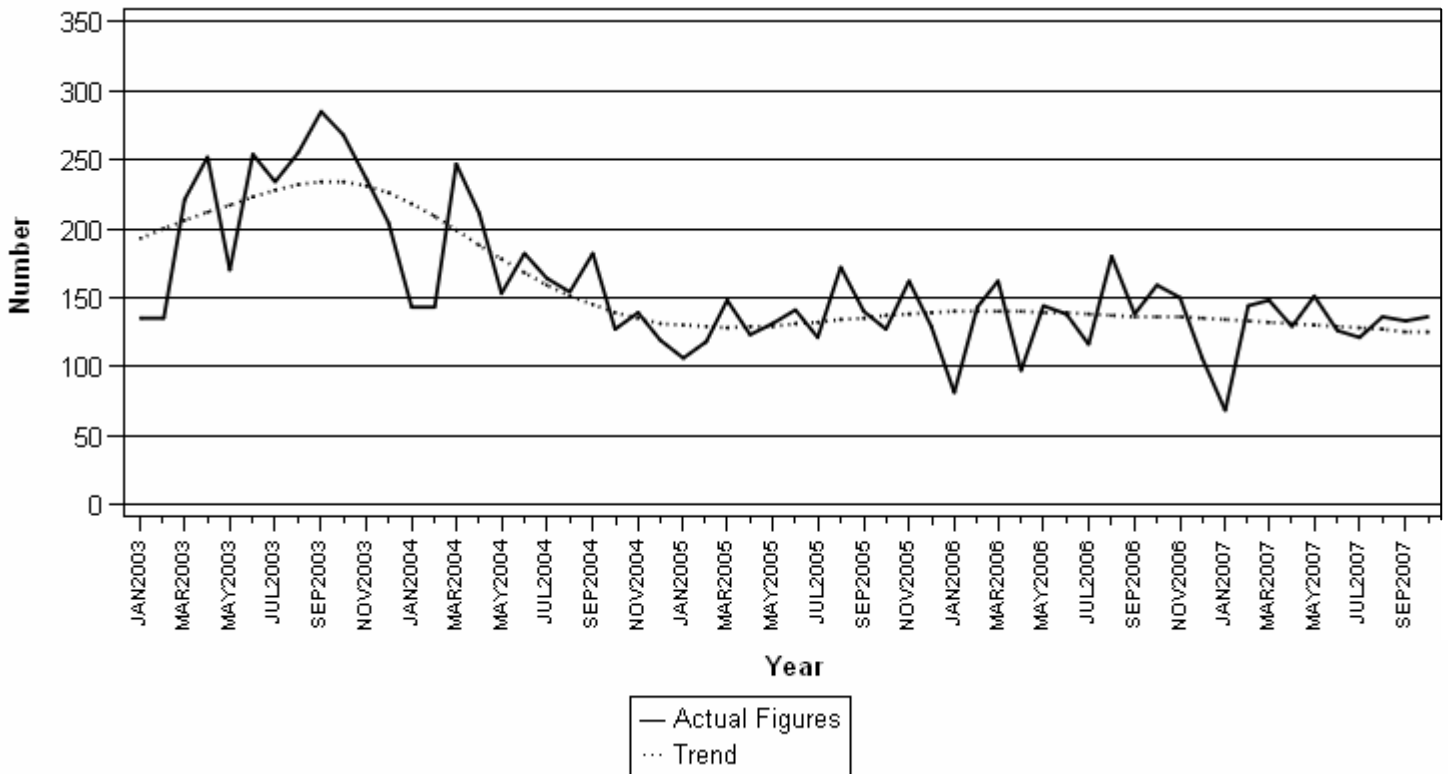


Figure 4 shows that the trend for the total number of insolvencies increased from the beginning of 2003 and reached a peak in October 2003. The trend decreased between late 2003 and early 2005, and was relatively steady thereafter.

Figure 4 – Total number of insolvencies



P J Lehohla
Statistician-General

Detailed results: Tables

Table 1 – Total number of liquidations according to industry

Industry	January - November 2007			November 2006			October 2007			November 2007		
	C	V	Total	C	V	Total	C	V	Total	C	V	Total
1.Agriculture, hunting, forestry & fishing	6	22	28	2	2	4	1	2	3	0	2	2
2.Mining & quarrying	22	7	29	0	2	2	1	2	3	0	1	1
3.Manufacturing	24	117	141	0	16	16	1	14	15	2	6	8
4.Electricity, gas & water	7	10	17	0	0	0	0	1	1	0	0	0
5.Construction	34	127	161	2	16	18	1	27	28	3	6	9
6.Wholesale and retail trade, catering & accommodation	85	702	787	10	80	90	10	60	70	4	55	59
7.Transport, storage, communication	8	64	72	0	26	26	0	8	8	1	4	5
8.Financing, insurance, real estate, business services	108	1375	1483	40	87	127	13	113	126	3	94	97
9.Community, social, personal services	23	204	227	2	28	30	12	20	32	0	13	13
Total number of liquidations	317	2628	2945	56	257	313	39	247	286	13	181	194

Table 2 – Number of liquidations of companies according to industry

Industry	January - November 2007			November 2006			October 2007			November 2007		
	C	V	Total	C	V	Total	C	V	Total	C	V	Total
1.Agriculture, hunting, forestry & fishing	3	5	8	2	1	3	0	0	0	0	0	0
2.Mining & quarrying	21	2	23	0	1	1	1	0	1	0	0	0
3.Manufacturing	20	51	71	0	11	11	1	10	11	2	0	2
4.Electricity, gas & water	7	2	9	0	0	0	0	0	0	0	0	0
5.Construction	24	62	86	1	4	5	1	15	16	2	4	6
6.Wholesale and retail trade, catering & accommodation	42	340	382	4	41	45	7	33	40	1	22	23
7.Transport, storage, communication	3	25	28	0	6	6	0	2	2	0	0	0
8.Financing, insurance, real estate, business services	57	940	997	36	50	86	4	75	79	2	53	55
9.Community, social, personal services	20	146	166	0	26	26	12	14	26	0	8	8
Total number of liquidations	197	1573	1770	43	140	183	26	149	175	7	87	94

Table 3 – Number of liquidations of close corporations according to industry

Industry	January - November 2007			November 2006			October 2007			November 2007		
	C	V	Total	C	V	Total	C	V	Total	C	V	Total
1.Agriculture, hunting, forestry & fishing	3	17	20	0	1	1	1	2	3	0	2	2
2.Mining & quarrying	1	5	6	0	1	1	0	2	2	0	1	1
3.Manufacturing	4	66	70	0	5	5	0	4	4	0	6	6
4.Electricity, gas & water	0	8	8	0	0	0	0	1	1	0	0	0
5.Construction	10	65	75	1	12	13	0	12	12	1	2	3
6.Wholesale and retail trade, catering & accommodation	43	362	405	6	39	45	3	27	30	3	33	36
7.Transport, storage, communication	5	39	44	0	20	20	0	6	6	1	4	5
8.Financing, insurance, real estate, business services	51	435	486	4	37	41	9	38	47	1	41	42
9.Community, social, personal services	3	58	61	2	2	4	0	6	6	0	5	5
Total number of liquidations	120	1055	1175	13	117	130	13	98	111	6	94	100

C = Compulsory.
V= Voluntary.

Table 4 – Total number of liquidations: 2001 to 2007

Month	2001	2002	2003	2004	2005	2006	2007
January	298	398	395	388	328	171	176
February	382	416	328	298	296	213	192
March	317	334	227	301	240	241	241
April	357	345	359	244	279	198	236
May	331	299	346	262	265	311	273
June	294	297	345	301	265	262	181
July	307	349	339	291	318	261	272
August	504	339	406	260	273	333	387
September	337	336	466	437	297	238	507
October	410	333	351	253	234	219	286
November	346	254	329	218	234	313	194
December	273	211	195	257	196	266	
Year	4 156	3 911	4 086	3 510	3 225	3 026	2 945

Table 5 – Total number of compulsory liquidations: 2001 to 2007

Month	2001	2002	2003	2004	2005	2006	2007
January	71	78	76	42	30	37	12
February	114	87	65	38	70	15	15
March	68	68	46	57	35	31	12
April	125	87	63	32	18	9	32
May	81	60	52	37	61	20	13
June	88	69	74	63	25	50	9
July	81	69	85	68	84	16	14
August	256	74	120	39	69	46	111
September	118	70	109	83	27	22	47
October	137	54	70	43	40	20	39
November	74	64	60	23	47	56	13
December	71	45	37	39	18	53	
Year	1 284	825	857	564	524	375	317

Table 6 – Total number of voluntary liquidations: 2001 to 2007

Month	2001	2002	2003	2004	2005	2006	2007
January	227	320	319	346	298	134	164
February	268	329	263	260	226	198	177
March	249	266	181	244	205	210	229
April	232	258	296	212	261	189	204
May	250	239	294	225	204	291	260
June	206	228	271	238	240	212	172
July	226	280	254	223	234	245	258
August	248	265	286	221	204	287	276
September	219	266	357	354	270	216	460
October	273	279	281	210	194	199	247
November	272	190	269	195	187	257	181
December	202	166	158	218	178	213	
Year	2 872	3 086	3 229	2 946	2 701	2 651	2 628

Table 7 – Number of liquidations of companies: 2001 to 2007

Month	2001	2002	2003	2004	2005	2006	2007
January	107	130	200	191	130	85	99
February	119	212	188	132	154	107	96
March	132	183	127	148	123	127	114
April	129	161	151	119	176	100	143
May	156	117	162	128	122	131	157
June	129	145	178	136	132	140	104
July	144	183	141	132	177	145	129
August	149	173	202	114	124	143	243
September	136	164	260	141	143	122	416
October	166	118	235	126	115	132	175
November	181	106	136	90	95	183	94
December	123	166	130	75	113	167	
Year	1 671	1 858	2 110	1 532	1 604	1 582	1 770

Table 8 – Number of compulsory liquidations of companies: 2001 to 2007

Month	2001	2002	2003	2004	2005	2006	2007
January	34	19	37	16	6	18	4
February	17	46	28	15	43	4	4
March	28	32	17	32	23	23	5
April	27	53	17	6	13	5	19
May	41	12	28	20	30	5	3
June	53	29	31	16	7	35	2
July	41	33	29	31	62	6	4
August	38	17	69	11	21	11	89
September	54	22	60	33	17	18	34
October	51	22	42	22	22	13	26
November	35	25	38	12	18	43	7
December	24	29	27	9	13	37	
Year	443	339	423	223	275	218	197

Table 9 – Number of voluntary liquidations of companies: 2001 to 2007

Month	2001	2002	2003	2004	2005	2006	2007
January	73	111	163	175	124	67	95
February	102	166	160	117	111	103	92
March	104	151	110	116	100	104	109
April	102	108	134	113	163	95	124
May	115	105	134	108	92	126	154
June	76	116	147	120	125	105	102
July	103	150	112	101	115	139	125
August	111	156	133	103	103	132	154
September	82	142	200	108	126	104	382
October	115	96	193	104	93	119	149
November	146	81	98	78	77	140	87
December	99	137	103	66	100	130	
Year	1 228	1 519	1 687	1 309	1 329	1 364	1 573

Table 10 – Number of liquidations of close corporations: 2001 to 2007

Month	2001	2002	2003	2004	2005	2006	2007
January	191	268	195	197	198	86	77
February	263	204	140	166	142	106	96
March	185	151	100	153	117	114	127
April	228	184	208	125	103	98	93
May	175	182	184	134	143	180	116
June	165	152	167	165	133	122	77
July	163	166	198	159	141	116	143
August	355	166	204	146	149	190	144
September	201	172	206	296	154	116	91
October	244	215	116	127	119	87	111
November	165	148	193	128	139	130	100
December	150	45	65	182	83	99	
Year	2 485	2 053	1 976	1 978	1 621	1 444	1 175

Table 11 – Number of compulsory liquidations of close corporations: 2001 to 2007

Month	2001	2002	2003	2004	2005	2006	2007
January	37	59	39	26	24	19	8
February	97	41	37	23	27	11	11
March	40	36	29	25	12	8	7
April	98	34	46	26	5	4	13
May	40	48	24	17	31	15	10
June	35	40	43	47	18	15	7
July	40	36	56	37	22	10	10
August	218	57	51	28	48	35	22
September	64	48	49	50	10	4	13
October	86	32	28	21	18	7	13
November	39	39	22	11	29	13	6
December	47	16	10	30	5	16	
Year	841	486	434	341	249	157	120

Table 12 – Number of voluntary liquidations of close corporations: 2001 to 2007

Month	2001	2002	2003	2004	2005	2006	2007
January	154	209	156	171	174	67	69
February	166	163	103	143	115	95	85
March	145	115	71	128	105	106	120
April	130	150	162	99	98	94	80
May	135	134	160	117	112	165	106
June	130	112	124	118	115	107	70
July	123	130	142	122	119	106	133
August	137	109	153	118	101	155	122
September	137	124	157	246	144	112	78
October	158	183	88	106	101	80	98
November	126	109	171	117	110	117	94
December	103	29	55	152	78	83	
Year	1 644	1 567	1 542	1 637	1 372	1 287	1 055

Table 13 – Total number of insolvencies of individuals and partnerships: 2001 to 2007

Month	2001	2002	2003	2004	2005	* 2006	1/ 2007
January	254	216	135	143	106	81	68
February	308	277	135	143	118	143	144
March	356	269	221	247	148	162	148
April	319	318	252	211	123	97	129
May	394	256	170	153	131	144	151
June	325	252	254	182	141	138	126
July	404	281	234	164	121	116	121
August	374	277	255	154	172	180	136
September	308	229	285	182	140	138	133
October	334	261	268	127	127	159	136
November	323	255	236	139	162	150	
December	238	161	204	119	129	106	
Year	3 937	3 052	2 649	1 964	1 618	1 614	1 292

1/ Preliminary.

* Revised.

Table 14 – Percentage change between November 2007 and the corresponding month of the previous year regarding the number of liquidations

Number of liquidations November 2006	Number of liquidations November 2007	% change between November 2006 and November 2007	Difference between November 2006 and November 2007
313	194	-38,0	-119

Table 15 – Percentage change between the first eleven months of 2007 and the first eleven months of 2006 regarding the number of liquidations

Number of liquidations January 2006 to November 2006	Number of liquidations January 2007 to November 2007	% change between January 2006 to November 2006 and January 2007 to November 2007	Difference between January 2006 to November 2006 and January 2007 to November 2007
2 760	2 945	6,7	185

Table 16 – Percentage change between October 2007 and the corresponding month of the previous year regarding the number of insolvencies

Number of insolvencies October 2006	Number of insolvencies October 2007	% change between October 2006 and October 2007	Difference between October 2006 and October 2007
159	136	-14,5	-23

Table 17 – Percentage change between the first ten months of 2007 and the first ten months of 2006 regarding the number of insolvencies

Number of insolvencies January 2006 to October 2006	Number of insolvencies January 2007 to October 2007	% change between January 2006 to October 2006 and January 2007 to October 2007	Difference between January 2006 to October 2006 and January 2007 to October 2007
1 358	1 292	-4,9	-66

Explanatory notes

- | | | |
|----------------------------------|----------|---|
| Introduction | 1 | Statistics South Africa (Stats SA) collects administrative information on liquidations from the Registrar of Companies and Close Corporations, Department of Trade and Industry, while information on insolvencies is gathered from Notices of the Master of the Supreme Court which appears in the Government Gazette. |
| | 2 | This statistical release reflects voluntary and compulsory liquidations of companies and close corporations and insolvencies of individuals and partnerships. |
| Purpose of the survey | 3 | The aggregated data in this release are used by the private and public sectors to measure economic performance and are also an important indicator of the scope of unpaid debt in South Africa. |
| | 4 | Due to insolvencies figures being available late, the data on insolvencies are published a month later than liquidations. |
| Scope of the survey | 5 | This survey covers <ul style="list-style-type: none"> • The total number of companies and close corporations which were liquidated. • The total number of individuals and partnerships placed under final sequestration. |
| Related publications | 6 | Users may also wish to refer to the following publications which are available from Stats SA - <ul style="list-style-type: none"> • <i>Bulletin of Statistics.</i> • <i>SA Statistics.</i> |
| Unpublished statistics | 7 | In some cases Stats SA can also make available statistics not included in standard publications. The statistics can be made available in one or more of the following ways: computer printout, CD or diskette. Generally a charge is made for providing unpublished statistics. |
| Symbols and abbreviations | 8 | Stats SA - Statistics South Africa
CD - Compact Disc |

Glossary

Compulsory liquidation	A compulsory liquidation takes place when the affairs of a company or close corporation are wind-up by order of the court.
Insolvency	Insolvencies refer to an individual or partnership which is unable to pay its debt and is placed under final sequestration. The number of insolvencies does not refer to the number of persons involved, as a partnership which is unable to pay its debt is regarded as one insolvency, irrespective of the number of partners.
Liquidation	Liquidation refers to the winding-up of the affairs of a company or close corporation when liabilities exceed assets and it can be resolved by voluntary action or by an order of the court.
Voluntary liquidation	A voluntary liquidation takes place when a company or close corporation, by own choice, resolves to wind-up its affairs.

General information

Stats SA publishes approximately 300 different statistical releases each year. It is not economically viable to produce them in more than one of South Africa's eleven official languages. Since the releases are used extensively, not only locally but also by international economic and social-scientific communities, Stats SA releases are published in English only.

Stats SA has copyright on this publication. Users may apply the information as they wish, provided that they acknowledge Stats SA as the source of the basic data wherever they process, apply, utilise, publish or distribute the data; and also that they specify that the relevant application and analysis (where applicable) result from their own processing of the data.

Stats SA products

A complete set of Stats SA publications is available at the Stats SA Library and the following libraries:

National Library of South Africa, Pretoria Division
National Library of South Africa, Cape Town Division
Natal Society Library, Pietermaritzburg
Library of Parliament, Cape Town
Bloemfontein Public Library
Johannesburg Public Library
Eastern Cape Library Services, King William's Town
Central Regional Library, Polokwane
Central Reference Library, Nelspruit
Central Reference Collection, Kimberley
Central Reference Library, Mmabatho

Stats SA also provides a subscription service.

Electronic services

Large ranges of data are available via on-line services, diskette, CD and computer printouts. For more details about our electronic data services, contact (012) 310 8600/8390/8351/4892/8964/8095.

You can visit us on the internet at: www.statssa.gov.za

Enquiries

Telephone number: (012) 310 8600/ 8390/ 8351/ 4892/ 8964/ 8095 (user information services)
(012) 310 2965 (technical enquiries)
(012) 310 8161 (orders)
(012) 310 4883/4885/8018 (library)

Fax number: (012) 310 8332 (technical enquiries)

email: juan-pierret@statssa.gov.za (technical enquiries)
info@statssa.gov.za (user information services)
distribution@statssa.gov.za (orders)

Postal address: Private Bag X44, Pretoria, 0001

Produced by Stats SA