

Statistics of liquidations and insolvencies (preliminary) November 2003

Co-operation between Statistics South Africa (Stats SA), the citizens of the country, the private sector and government institutions is essential for a successful statistical system. Without continued co-operation and goodwill, the timely release of relevant and reliable official statistics will not be possible.

**Embargoed until: 13:00
Date: 12 January 2004**

Stats SA publishes approximately three hundred different releases each year. It is not economically viable to produce them in more than one of South Africa's eleven official languages. Since the releases are used extensively, not only locally, but also by international economic and social-scientific communities, Stats SA releases are published in English only.

These figures are issued as preliminary

Key figures as at the end of November 2003 regarding the number of liquidations

| Actual estimates | November 2003 | September 2003 to November 2003 | % change between November 2002 and November 2003 | % change between June 2003 to August 2003 and September 2003 to November 2003 | % change between January 2002 to November 2002 and January 2003 to November 2003 |
|------------------------|---------------|---------------------------------|--|---|--|
| Number of liquidations | 329 | 1 146 | +29,5 | +5,1 | +5,2 |

Key findings as at the end of November 2003 regarding the number of liquidations

Total number of liquidations increases

The total number of liquidations recorded for November 2003 increased by 29,5% (from 254 to 329) compared with November 2002. Furthermore, the total number of liquidations recorded for the three months ended November 2003 increased by 5,1% (from 1 090 to 1 146) compared with the previous three months. The total number of liquidations recorded for the first eleven months of 2003 increased by 5,2% (from 3 700 to 3 891) compared with the first eleven months of 2002.

The increase of 29,5% in the total number of liquidations for November 2003 compared with November 2002 was due to an increase of 41,6% (from 190 to 269) in voluntary liquidations.

The increase of 5,2% in the total number of liquidations during the first eleven months of 2003 compared with the first eleven months of 2002 was due to an increase of 5,1% (from 780 to 820) in compulsory liquidations and 5,2% (from 2 920 to 3 071) in voluntary liquidations.

Key figures as at the end of October 2003 regarding the number of insolvencies

| Actual estimates | October 2003 | August 2003 to October 2003 | % change between October 2002 and October 2003 | % change between May 2003 to July 2003 and August 2003 to October 2003 | % change between January 2002 to October 2002 and January 2003 to October 2003 |
|------------------------|--------------|-----------------------------|--|--|--|
| Number of insolvencies | 197 | 564 | -20,6 | -0,7 | -28,5 |

Key findings as at the end of October 2003 regarding the number of insolvencies

Total number of insolvencies decreases

The total number of insolvencies recorded for the three months ended October 2003 decreased slightly by 0,7% (from 568 to 564) compared with the previous three months. Furthermore, the total number of insolvencies for October 2003 decreased by 20,6% (from 248 to 197) compared with October 2002. The total number of insolvencies recorded for the first ten months of 2003 decreased by 28,5% (from 2 551 to 1 823) compared with the first ten months of 2002.

Figure 1 – Total number of liquidations

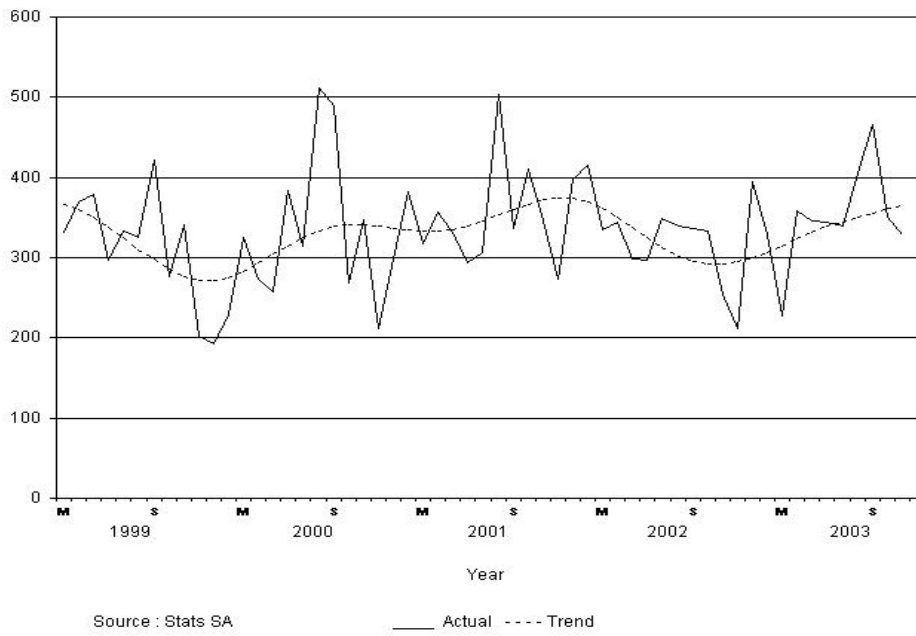
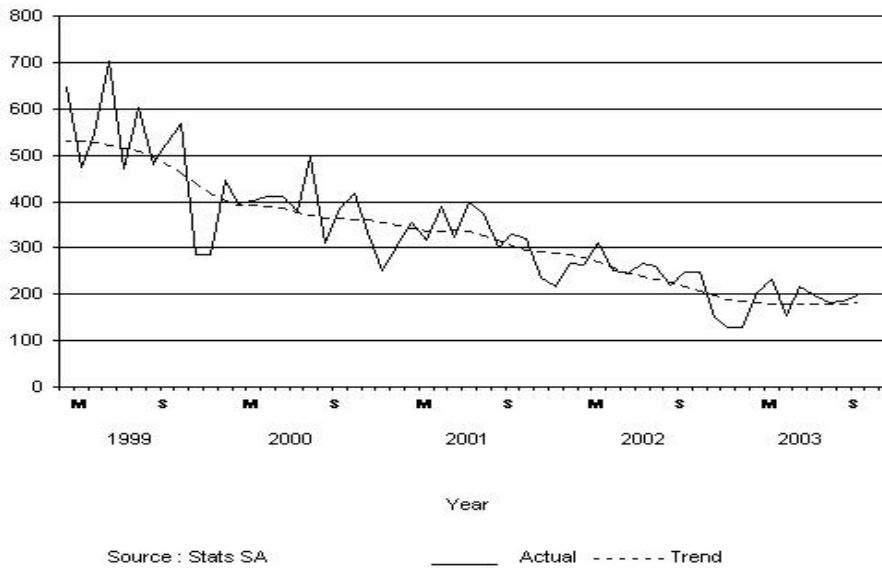


Figure 2 - Total number of insolvencies



**PP
PJ Lehohla
Statistician-General**

Contents

| | Page |
|--|------|
| Notes | 4 |
| Tables | |
| Table 1 Total number of liquidations according to industry | 5 |
| Table 2 Number of liquidations of companies according to industry | 5 |
| Table 3 Number of liquidations of close corporations according to industry | 5 |
| Table 4 Total number of liquidations: 1991 to 2003..... | 6 |
| Table 5 Total number of compulsory liquidations: 1991 to 2003 | 6 |
| Table 6 Total number of voluntary liquidations: 1991 to 2003 | 6 |
| Table 7 Number of liquidations of companies: 1991 to 2003..... | 6 |
| Table 8 Number of compulsory liquidations of companies: 1991 to 2003 | 6 |
| Table 9 Number of voluntary liquidations of companies: 1991 to 2003 | 7 |
| Table 10 Number of liquidations of close corporations: 1991 to 2003 | 7 |
| Table 11 Number of voluntary liquidations of close corporations: 1991 to 2003..... | 7 |
| Table 12 Number of compulsory liquidations of close corporations: 1991 to 2003 | 7 |
| Table 13 Total number of insolvencies: 1991 to 2003 | 7 |
| Explanatory notes | 8 |
| Glossary | 9 |
| General | 10 |

Notes

Forthcoming issues

Issue

Expected release date

December 2003

29 January 2004

January 2004

26 February 2004

February 2004

25 March 2004

Data source

Information on liquidations is obtained from the Registrar of Companies and Close Corporations, Department of Trade and Industry, while information on insolvencies is based on Notices of the Master of the Supreme Court which appears in the Government Gazette. The aggregated data in this release are used by the private and public sectors to measure economic performance and are also an important indicator of the scope of unpaid debt in South Africa.

Table 1- Total number of liquidations according to industry

| Industry | 2002 Total | | | November 2002 | | | October 2003 | | | November 2003 | | |
|---|-----------------|----------------|-------|-----------------|----------------|-------|-----------------|----------------|-------|-----------------|----------------|-------|
| | Compul- sory | Volun- tary | Total | Compul- sory | Volun- tary | Total | Compul- sory | Volun- tary | Total | Compul- sory | Volun- tary | Total |
| Agriculture, hunting, forestry and fishing | 11 | 28 | 39 | 0 | 0 | 0 | 0 | 4 | 4 | 1 | 4 | 5 |
| Mining and quarrying | 29 | 51 | 80 | 2 | 8 | 10 | 1 | 2 | 3 | 0 | 0 | 0 |
| Manufacturing | 107 | 225 | 332 | 11 | 10 | 21 | 7 | 16 | 23 | 11 | 26 | 37 |
| Electricity, gas and water | 0 | 7 | 7 | 0 | 0 | 0 | 0 | 0 | 0 | 0 | 0 | 0 |
| Construction | 117 | 254 | 371 | 10 | 16 | 26 | 7 | 13 | 20 | 2 | 22 | 24 |
| Wholesale and retail trade, catering and accommodation | 237 | 981 | 1 218 | 19 | 61 | 80 | 25 | 76 | 101 | 24 | 80 | 104 |
| Transport, storage and communication | 43 | 132 | 175 | 4 | 10 | 14 | 4 | 4 | 8 | 0 | 9 | 9 |
| Financing, insurance, real estate and business services | 241 | 1 312 | 1 553 | 14 | 82 | 96 | 22 | 126 | 148 | 18 | 109 | 127 |
| Community, social and personal services | 40 | 96 | 136 | 4 | 3 | 7 | 4 | 40 | 44 | 4 | 19 | 23 |
| Total number of liquidations | 825 | 3 086 | 3 911 | 64 | 190 | 254 | 70 | 281 | 351 | 60 | 269 | 329 |

Table 2 – Number of liquidations of companies according to industry

| Industry | 2002 Total | | | November 2002 | | | October 2003 | | | November 2003 | | |
|---|-----------------|----------------|-------|-----------------|----------------|-------|-----------------|----------------|-------|-----------------|----------------|-------|
| | Compul- sory | Volun- tary | Total | Compul- sory | Volun- tary | Total | Compul- sory | Volun- tary | Total | Compul- sory | Volun- tary | Total |
| Agriculture, hunting, forestry and fishing | 10 | 13 | 23 | 0 | 0 | 0 | 0 | 0 | 0 | 0 | 0 | 0 |
| Mining and quarrying | 1 | 15 | 16 | 0 | 5 | 5 | 1 | 1 | 2 | 0 | 0 | 0 |
| Manufacturing | 29 | 108 | 137 | 1 | 3 | 4 | 5 | 11 | 16 | 7 | 8 | 15 |
| Electricity, gas and water | 0 | 6 | 6 | 0 | 0 | 0 | 0 | 0 | 0 | 0 | 0 | 0 |
| Construction | 24 | 67 | 91 | 1 | 4 | 5 | 1 | 7 | 8 | 0 | 8 | 8 |
| Wholesale and retail trade, catering and accommodation | 115 | 489 | 604 | 10 | 31 | 41 | 12 | 43 | 55 | 14 | 26 | 40 |
| Transport, storage and communication | 19 | 32 | 51 | 2 | 1 | 3 | 3 | 3 | 6 | 0 | 2 | 2 |
| Financing, insurance, real estate and business services | 114 | 737 | 851 | 9 | 34 | 43 | 16 | 90 | 106 | 13 | 44 | 57 |
| Community, social and personal services | 27 | 52 | 79 | 2 | 3 | 5 | 4 | 38 | 42 | 4 | 10 | 14 |
| Total number of liquidations of close corporations | 339 | 1 519 | 1 858 | 25 | 81 | 106 | 42 | 193 | 235 | 38 | 98 | 136 |

Table 3 – Number of liquidations of close corporations according to industry

| Industry | 2002 Total | | | November 2002 | | | October 2003 | | | November 2003 | | |
|---|-----------------|----------------|-------|-----------------|----------------|-------|-----------------|----------------|-------|-----------------|----------------|-------|
| | Compul- sory | Volun- tary | Total | Compul- sory | Volun- tary | Total | Compul- sory | Volun- tary | Total | Compul- sory | Volun- tary | Total |
| Agriculture, hunting, forestry and fishing | 1 | 15 | 16 | 0 | 0 | 0 | 0 | 4 | 4 | 1 | 4 | 5 |
| Mining and quarrying | 28 | 36 | 64 | 2 | 3 | 5 | 0 | 1 | 1 | 0 | 0 | 0 |
| Manufacturing | 78 | 117 | 195 | 10 | 7 | 17 | 2 | 5 | 7 | 4 | 18 | 22 |
| Electricity, gas and water | 0 | 1 | 1 | 0 | 0 | 0 | 0 | 0 | 0 | 0 | 0 | 0 |
| Construction | 93 | 187 | 280 | 9 | 12 | 21 | 6 | 6 | 12 | 2 | 14 | 16 |
| Wholesale and retail trade, catering and accommodation | 122 | 492 | 614 | 9 | 30 | 39 | 13 | 33 | 46 | 10 | 54 | 64 |
| Transport, storage and communication | 24 | 100 | 124 | 2 | 9 | 11 | 1 | 1 | 2 | 0 | 7 | 7 |
| Financing, insurance, real estate and business services | 127 | 575 | 702 | 5 | 48 | 53 | 6 | 36 | 42 | 5 | 65 | 70 |
| Community, social and personal services | 13 | 44 | 57 | 2 | 0 | 2 | 0 | 2 | 2 | 0 | 9 | 9 |
| Total number of liquidations of close corporations | 486 | 1 567 | 2 053 | 39 | 109 | 148 | 28 | 88 | 116 | 22 | 171 | 193 |

Table 4 - Total number of liquidations: 1991 to 2003

| Year | Jan | Feb | Mar | Apr | May | Jun | Jul | Aug | Sep | Oct | Nov | Dec | Year-tot | Year-ave |
|------|-----|-----|-----|-----|-----|-----|-----|-----|-----|-----|-----|-----|----------|----------|
| 1991 | 137 | 147 | 115 | 150 | 182 | 150 | 146 | 217 | 178 | 153 | 118 | 195 | 1 888 | 157 |
| 1992 | 169 | 197 | 290 | 224 | 157 | 176 | 174 | 205 | 195 | 220 | 199 | 202 | 2 408 | 201 |
| 1993 | 218 | 207 | 258 | 184 | 236 | 266 | 187 | 223 | 223 | 237 | 263 | 218 | 2 720 | 227 |
| 1994 | 159 | 314 | 264 | 224 | 308 | 261 | 240 | 267 | 339 | 318 | 303 | 276 | 3 273 | 273 |
| 1995 | 261 | 289 | 334 | 265 | 307 | 225 | 299 | 305 | 259 | 285 | 297 | 143 | 3 269 | 272 |
| 1996 | 265 | 223 | 261 | 241 | 215 | 234 | 231 | 292 | 286 | 261 | 284 | 116 | 2 909 | 242 |
| 1997 | 275 | 262 | 314 | 268 | 286 | 296 | 302 | 293 | 253 | 264 | 298 | 240 | 3 351 | 279 |
| 1998 | 162 | 234 | 253 | 320 | 291 | 423 | 348 | 347 | 307 | 334 | 476 | 271 | 3 766 | 314 |
| 1999 | 367 | 367 | 332 | 370 | 379 | 297 | 333 | 326 | 421 | 277 | 341 | 202 | 4 012 | 334 |
| 2000 | 193 | 229 | 326 | 273 | 258 | 383 | 314 | 511 | 490 | 269 | 348 | 211 | 3 805 | 317 |
| 2001 | 298 | 382 | 317 | 357 | 331 | 294 | 307 | 504 | 337 | 410 | 346 | 273 | 4 156 | 346 |
| 2002 | 398 | 416 | 334 | 345 | 299 | 297 | 349 | 339 | 336 | 333 | 254 | 211 | 3 911 | 326 |
| 2003 | 395 | 328 | 227 | 359 | 346 | 345 | 339 | 406 | 466 | 351 | 329 | | | 354 |

Table 5 - Total number of compulsory liquidations: 1991 to 2003

| Year | Jan | Feb | Mar | Apr | May | Jun | Jul | Aug | Sep | Oct | Nov | Dec | Year-tot | Year-ave |
|------|-----|-----|-----|-----|-----|-----|-----|-----|-----|-----|-----|-----|----------|----------|
| 1991 | 121 | 131 | 96 | 132 | 163 | 135 | 136 | 199 | 153 | 136 | 102 | 182 | 1 686 | 141 |
| 1992 | 154 | 171 | 274 | 209 | 145 | 154 | 147 | 185 | 175 | 204 | 180 | 181 | 2 179 | 182 |
| 1993 | 191 | 183 | 214 | 166 | 207 | 234 | 150 | 177 | 183 | 194 | 179 | 150 | 2 228 | 186 |
| 1994 | 79 | 194 | 140 | 130 | 158 | 161 | 123 | 142 | 166 | 128 | 87 | 112 | 1 620 | 135 |
| 1995 | 119 | 116 | 135 | 114 | 149 | 113 | 150 | 167 | 155 | 199 | 218 | 82 | 1 717 | 143 |
| 1996 | 200 | 137 | 205 | 169 | 155 | 165 | 175 | 228 | 213 | 164 | 213 | 79 | 2 103 | 175 |
| 1997 | 171 | 178 | 231 | 201 | 200 | 205 | 214 | 196 | 147 | 154 | 178 | 146 | 2 221 | 185 |
| 1998 | 88 | 130 | 122 | 150 | 189 | 240 | 221 | 218 | 192 | 226 | 275 | 150 | 2 201 | 183 |
| 1999 | 244 | 177 | 132 | 177 | 186 | 131 | 140 | 132 | 169 | 102 | 159 | 95 | 1 844 | 154 |
| 2000 | 85 | 78 | 172 | 125 | 57 | 190 | 77 | 247 | 241 | 44 | 128 | 71 | 1 515 | 126 |
| 2001 | 71 | 114 | 68 | 125 | 81 | 88 | 81 | 256 | 118 | 137 | 74 | 71 | 1 284 | 107 |
| 2002 | 78 | 87 | 68 | 87 | 60 | 69 | 69 | 74 | 70 | 54 | 64 | 45 | 825 | 69 |
| 2003 | 76 | 65 | 46 | 63 | 52 | 74 | 85 | 120 | 109 | 70 | 60 | | | 75 |

Table 6 - Total number of voluntary liquidations: 1991 to 2003

| Year | Jan | Feb | Mar | Apr | May | Jun | Jul | Aug | Sep | Oct | Nov | Dec | Year-tot | Year-ave |
|------|-----|-----|-----|-----|-----|-----|-----|-----|-----|-----|-----|-----|----------|----------|
| 1991 | 16 | 16 | 19 | 18 | 19 | 15 | 10 | 18 | 25 | 17 | 16 | 13 | 202 | 17 |
| 1992 | 15 | 26 | 16 | 15 | 12 | 22 | 27 | 20 | 20 | 16 | 19 | 21 | 229 | 19 |
| 1993 | 27 | 24 | 44 | 18 | 29 | 32 | 37 | 46 | 40 | 43 | 84 | 68 | 492 | 41 |
| 1994 | 80 | 120 | 124 | 94 | 150 | 100 | 117 | 125 | 173 | 190 | 216 | 164 | 1 653 | 138 |
| 1995 | 142 | 173 | 199 | 151 | 158 | 112 | 149 | 138 | 104 | 86 | 79 | 61 | 1 552 | 129 |
| 1996 | 65 | 86 | 56 | 72 | 60 | 69 | 56 | 64 | 73 | 97 | 71 | 37 | 806 | 67 |
| 1997 | 104 | 84 | 83 | 67 | 86 | 91 | 88 | 97 | 106 | 110 | 120 | 94 | 1 130 | 94 |
| 1998 | 74 | 104 | 131 | 170 | 102 | 183 | 127 | 129 | 115 | 108 | 201 | 121 | 1 565 | 130 |
| 1999 | 123 | 190 | 200 | 193 | 193 | 166 | 193 | 194 | 252 | 175 | 182 | 107 | 2 168 | 181 |
| 2000 | 108 | 151 | 154 | 148 | 201 | 193 | 237 | 264 | 249 | 225 | 220 | 140 | 2 290 | 191 |
| 2001 | 227 | 268 | 249 | 232 | 250 | 206 | 226 | 248 | 219 | 273 | 272 | 202 | 2 872 | 239 |
| 2002 | 320 | 329 | 266 | 258 | 239 | 228 | 280 | 265 | 266 | 279 | 190 | 166 | 3 086 | 257 |
| 2003 | 319 | 263 | 181 | 296 | 294 | 271 | 254 | 286 | 357 | 281 | 269 | | | 279 |

Table 7 - Number of liquidations of companies: 1991 to 2003

| Year | Jan | Feb | Mar | Apr | May | Jun | Jul | Aug | Sep | Oct | Nov | Dec | Year-tot | Year-ave |
|------|-----|-----|-----|-----|-----|-----|-----|-----|-----|-----|-----|-----|----------|----------|
| 1991 | 79 | 117 | 63 | 89 | 133 | 103 | 76 | 115 | 98 | 81 | 71 | 125 | 1 150 | 96 |
| 1992 | 85 | 99 | 125 | 143 | 79 | 85 | 79 | 105 | 87 | 98 | 94 | 112 | 1 191 | 99 |
| 1993 | 112 | 95 | 118 | 80 | 109 | 120 | 105 | 99 | 120 | 108 | 156 | 122 | 1 344 | 112 |
| 1994 | 115 | 177 | 186 | 144 | 189 | 157 | 148 | 139 | 195 | 196 | 225 | 187 | 2 058 | 172 |
| 1995 | 143 | 171 | 178 | 130 | 170 | 121 | 149 | 150 | 145 | 111 | 146 | 105 | 1 719 | 143 |
| 1996 | 146 | 121 | 138 | 126 | 98 | 92 | 82 | 118 | 135 | 104 | 115 | 58 | 1 333 | 111 |
| 1997 | 128 | 108 | 114 | 134 | 119 | 117 | 114 | 110 | 122 | 127 | 119 | 86 | 1 398 | 117 |
| 1998 | 86 | 99 | 108 | 171 | 125 | 202 | 133 | 151 | 116 | 106 | 170 | 166 | 1 633 | 136 |
| 1999 | 134 | 198 | 165 | 166 | 142 | 114 | 114 | 169 | 157 | 145 | 136 | 98 | 1 738 | 145 |
| 2000 | 91 | 151 | 241 | 166 | 130 | 173 | 89 | 152 | 93 | 106 | 112 | 122 | 1 626 | 136 |
| 2001 | 107 | 119 | 132 | 129 | 156 | 129 | 144 | 149 | 136 | 166 | 181 | 123 | 1 671 | 139 |
| 2002 | 130 | 212 | 183 | 161 | 117 | 145 | 183 | 173 | 164 | 118 | 106 | 166 | 1 858 | 155 |
| 2003 | 200 | 188 | 127 | 151 | 162 | 178 | 141 | 202 | 260 | 235 | 136 | | | 180 |

Table 8 - Number of compulsory liquidations of companies: 1991 to 2003

| Year | Jan | Feb | Mar | Apr | May | Jun | Jul | Aug | Sep | Oct | Nov | Dec | Year-tot | Year-ave |
|------|-----|-----|-----|-----|-----|-----|-----|-----|-----|-----|-----|-----|----------|----------|
| 1991 | 65 | 102 | 45 | 73 | 117 | 88 | 69 | 100 | 74 | 69 | 60 | 112 | 974 | 81 |
| 1992 | 72 | 85 | 115 | 134 | 74 | 69 | 64 | 90 | 72 | 89 | 77 | 96 | 1 037 | 86 |
| 1993 | 95 | 73 | 87 | 66 | 87 | 101 | 82 | 66 | 92 | 83 | 106 | 64 | 1 002 | 84 |
| 1994 | 55 | 100 | 89 | 73 | 69 | 82 | 63 | 45 | 77 | 69 | 51 | 69 | 842 | 70 |
| 1995 | 46 | 65 | 40 | 52 | 86 | 68 | 52 | 62 | 71 | 52 | 106 | 64 | 764 | 64 |
| 1996 | 102 | 84 | 95 | 81 | 72 | 48 | 50 | 85 | 94 | 54 | 84 | 35 | 884 | 74 |
| 1997 | 78 | 71 | 64 | 97 | 72 | 63 | 81 | 77 | 54 | 60 | 66 | 39 | 822 | 69 |
| 1998 | 51 | 53 | 49 | 43 | 73 | 86 | 70 | 103 | 59 | 66 | 54 | 82 | 789 | 66 |
| 1999 | 69 | 96 | 70 | 87 | 73 | 46 | 43 | 77 | 61 | 65 | 76 | 47 | 810 | 68 |
| 2000 | 32 | 57 | 147 | 87 | 40 | 100 | 32 | 48 | 31 | 21 | 25 | 39 | 659 | 55 |
| 2001 | 34 | 17 | 28 | 27 | 41 | 53 | 41 | 38 | 54 | 51 | 35 | 24 | 443 | 37 |
| 2002 | 19 | 46 | 32 | 53 | 12 | 29 | 33 | 17 | 22 | 22 | 25 | 29 | 339* | 27 |
| 2003 | 37 | 28 | 17 | 17 | 28 | 31 | 29 | 69 | 60 | 42 | 38 | | | 36 |

Table 9 - Number of voluntary liquidations of companies: 1991 to 2003

| Year | Jan | Feb | Mar | Apr | May | Jun | Jul | Aug | Sep | Oct | Nov | Dec | Year-tot | Year-ave |
|------|-----|-----|-----|-----|-----|-----|-----|-----|-----|-----|-----|-----|----------|----------|
| 1991 | 14 | 15 | 18 | 16 | 16 | 15 | 7 | 15 | 24 | 12 | 11 | 13 | 176 | 15 |
| 1992 | 13 | 14 | 10 | 9 | 5 | 16 | 15 | 15 | 15 | 9 | 17 | 16 | 154 | 13 |
| 1993 | 17 | 22 | 31 | 14 | 22 | 19 | 23 | 33 | 28 | 25 | 50 | 58 | 342 | 29 |
| 1994 | 60 | 77 | 97 | 71 | 120 | 75 | 85 | 94 | 118 | 127 | 174 | 118 | 1 216 | 101 |
| 1995 | 97 | 106 | 138 | 78 | 84 | 53 | 97 | 88 | 74 | 59 | 40 | 41 | 955 | 80 |
| 1996 | 44 | 37 | 43 | 45 | 26 | 44 | 32 | 33 | 41 | 50 | 31 | 23 | 449 | 37 |
| 1997 | 50 | 37 | 50 | 37 | 47 | 54 | 33 | 33 | 68 | 67 | 53 | 47 | 576 | 48 |
| 1998 | 35 | 46 | 59 | 128 | 52 | 116 | 63 | 48 | 57 | 40 | 116 | 84 | 844 | 70 |
| 1999 | 65 | 102 | 95 | 79 | 69 | 68 | 71 | 92 | 96 | 80 | 60 | 51 | 928 | 77 |
| 2000 | 59 | 94 | 94 | 79 | 90 | 73 | 57 | 104 | 62 | 85 | 87 | 83 | 967 | 81 |
| 2001 | 73 | 102 | 104 | 102 | 115 | 76 | 103 | 111 | 82 | 115 | 146 | 99 | 1 228 | 103 |
| 2002 | 111 | 166 | 151 | 108 | 105 | 116 | 150 | 156 | 142 | 96 | 81 | 137 | 1 519 | 127 |
| 2003 | 163 | 160 | 110 | 134 | 134 | 147 | 112 | 133 | 200 | 193 | 98 | | | 144 |

Table 10 - Number of liquidations of close corporations: 1991 to 2003

| Year | Jan | Feb | Mar | Apr | May | Jun | Jul | Aug | Sep | Oct | Nov | Dec | Year-tot | Year-ave |
|------|-----|-----|-----|-----|-----|-----|-----|-----|-----|-----|-----|-----|----------|----------|
| 1991 | 58 | 30 | 52 | 61 | 49 | 47 | 70 | 102 | 80 | 72 | 47 | 70 | 738 | 62 |
| 1992 | 84 | 98 | 165 | 81 | 78 | 91 | 95 | 100 | 108 | 122 | 105 | 90 | 1 217 | 101 |
| 1993 | 106 | 112 | 140 | 104 | 127 | 146 | 82 | 124 | 103 | 129 | 107 | 96 | 1 376 | 115 |
| 1994 | 44 | 137 | 78 | 80 | 119 | 104 | 92 | 128 | 144 | 122 | 78 | 89 | 1 215 | 101 |
| 1995 | 118 | 118 | 156 | 135 | 137 | 104 | 150 | 155 | 114 | 174 | 151 | 38 | 1 550 | 129 |
| 1996 | 119 | 102 | 123 | 115 | 117 | 142 | 149 | 174 | 151 | 157 | 169 | 58 | 1 576 | 131 |
| 1997 | 147 | 154 | 200 | 134 | 167 | 179 | 188 | 183 | 131 | 137 | 179 | 154 | 1 953 | 163 |
| 1998 | 76 | 135 | 145 | 149 | 166 | 221 | 215 | 196 | 191 | 228 | 306 | 105 | 2 133 | 178 |
| 1999 | 233 | 169 | 167 | 204 | 237 | 183 | 219 | 157 | 264 | 132 | 205 | 104 | 2 274 | 190 |
| 2000 | 102 | 78 | 85 | 107 | 128 | 210 | 225 | 359 | 397 | 163 | 236 | 89 | 2 179 | 182 |
| 2001 | 191 | 263 | 185 | 228 | 175 | 165 | 163 | 355 | 201 | 244 | 165 | 150 | 2 485 | 207 |
| 2002 | 268 | 204 | 151 | 184 | 182 | 152 | 166 | 166 | 172 | 215 | 148 | 45 | 2 053 | 171 |
| 2003 | 195 | 140 | 100 | 208 | 184 | 167 | 198 | 204 | 206 | 116 | 193 | | | 174 |

Table 11 - Number of compulsory liquidations of close corporations: 1991 to 2003

| Year | Jan | Feb | Mar | Apr | May | Jun | Jul | Aug | Sep | Oct | Nov | Dec | Year-tot | Year-ave |
|------|-----|-----|-----|-----|-----|-----|-----|-----|-----|-----|-----|-----|----------|----------|
| 1991 | 56 | 29 | 51 | 59 | 46 | 47 | 67 | 99 | 79 | 67 | 42 | 70 | 712 | 59 |
| 1992 | 82 | 86 | 159 | 75 | 71 | 85 | 83 | 95 | 103 | 115 | 103 | 85 | 1 142 | 95 |
| 1993 | 96 | 110 | 127 | 100 | 120 | 133 | 68 | 111 | 91 | 111 | 73 | 86 | 1 226 | 102 |
| 1994 | 24 | 94 | 51 | 57 | 89 | 79 | 60 | 97 | 89 | 59 | 36 | 43 | 778 | 65 |
| 1995 | 73 | 51 | 95 | 62 | 63 | 45 | 98 | 105 | 84 | 147 | 112 | 18 | 953 | 79 |
| 1996 | 98 | 53 | 110 | 88 | 83 | 117 | 125 | 143 | 119 | 110 | 129 | 44 | 1 219 | 102 |
| 1997 | 93 | 107 | 167 | 104 | 128 | 142 | 133 | 119 | 93 | 94 | 112 | 107 | 1 399 | 117 |
| 1998 | 37 | 77 | 73 | 107 | 116 | 154 | 151 | 115 | 133 | 160 | 221 | 68 | 1 412 | 118 |
| 1999 | 175 | 81 | 62 | 90 | 113 | 85 | 97 | 55 | 108 | 37 | 83 | 48 | 1 034 | 86 |
| 2000 | 53 | 21 | 25 | 38 | 17 | 90 | 45 | 199 | 210 | 23 | 103 | 32 | 856 | 71 |
| 2001 | 37 | 97 | 40 | 98 | 40 | 35 | 40 | 218 | 64 | 86 | 39 | 47 | 841 | 70 |
| 2002 | 59 | 41 | 36 | 34 | 48 | 40 | 36 | 57 | 48 | 32 | 39 | 16 | 486 | 41 |
| 2003 | 39 | 37 | 29 | 46 | 24 | 43 | 56 | 51 | 49 | 28 | 22 | | | 39 |

Table 12 - Number of voluntary liquidations of close corporations: 1991 to 2003

| Year | Jan | Feb | Mar | Apr | May | Jun | Jul | Aug | Sep | Oct | Nov | Dec | Year-tot | Year-ave |
|------|-----|-----|-----|-----|-----|-----|-----|-----|-----|-----|-----|-----|----------|----------|
| 1991 | 2 | 1 | 1 | 2 | 3 | 0 | 3 | 3 | 1 | 5 | 5 | 0 | 26 | 2 |
| 1992 | 2 | 12 | 6 | 6 | 7 | 6 | 12 | 5 | 5 | 7 | 2 | 5 | 75 | 6 |
| 1993 | 10 | 2 | 13 | 4 | 7 | 13 | 14 | 13 | 12 | 18 | 34 | 10 | 150 | 13 |
| 1994 | 20 | 43 | 27 | 23 | 30 | 25 | 32 | 31 | 55 | 63 | 42 | 46 | 437 | 36 |
| 1995 | 45 | 67 | 61 | 73 | 74 | 59 | 52 | 50 | 30 | 27 | 39 | 20 | 597 | 50 |
| 1996 | 21 | 49 | 13 | 27 | 34 | 25 | 24 | 31 | 32 | 47 | 40 | 14 | 357 | 30 |
| 1997 | 54 | 47 | 33 | 30 | 39 | 37 | 55 | 64 | 38 | 43 | 67 | 47 | 554 | 46 |
| 1998 | 39 | 58 | 72 | 42 | 50 | 67 | 64 | 81 | 58 | 68 | 85 | 37 | 721 | 60 |
| 1999 | 58 | 88 | 105 | 114 | 124 | 98 | 122 | 102 | 156 | 95 | 122 | 56 | 1 240 | 103 |
| 2000 | 49 | 57 | 60 | 69 | 111 | 120 | 180 | 160 | 187 | 140 | 133 | 57 | 1 323 | 110 |
| 2001 | 154 | 166 | 145 | 130 | 135 | 130 | 123 | 137 | 137 | 158 | 126 | 103 | 1 644 | 137 |
| 2002 | 209 | 163 | 115 | 150 | 134 | 112 | 130 | 109 | 124 | 183 | 109 | 29 | 1 567 | 131 |
| 2003 | 156 | 103 | 71 | 162 | 160 | 124 | 142 | 153 | 157 | 88 | 171 | | | 135 |

Table 13 - Total number of insolvencies: 1991 to 2003

| Year | Jan | Feb | Mar | Apr | May | Jun | Jul | Aug | Sep | Oct | Nov | Dec | Year-tot | Year-ave |
|------|-----|-----|------|------|------|------|------|------|------|------|------|------|----------|----------|
| 1991 | 271 | 257 | 325 | 320 | 315 | 306 | 369 | 432 | 411 | 448 | 349 | 254 | 4 057 | 338 |
| 1992 | 369 | 349 | 485 | 435 | 370 | 447 | 414 | 460 | 548 | 480 | 512 | 385 | 5 254 | 438 |
| 1993 | 379 | 408 | 553 | 386 | 376 | 390 | 377 | 419 | 385 | 379 | 472 | 319 | 4 843 | 404 |
| 1994 | 336 | 298 | 399 | 237 | 243 | 283 | 323 | 381 | 275 | 256 | 251 | 191 | 3 473 | 289 |
| 1995 | 246 | 238 | 250 | 210 | 210 | 212 | 194 | 316 | 231 | 240 | 259 | 164 | 2 770 | 231 |
| 1996 | 224 | 240 | 240 | 217 | 209 | 230 | 268 | 241 | 236 | 253 | 216 | 229 | 2 803 | 234 |
| 1997 | 194 | 257 | 218 | 272 | 247 | 300 | 323 | 300 | 330 | 310 | 312 | 220 | 3 283 | 274 |
| 1998 | 203 | 259 | 418 | 345 | 278 | 339 | 326 | 378 | 367 | 416 | 507 | 453 | 4 289 | 357 |
| 1999 | 354 | 372 | 645 | 475 | 547 | 703 | 471 | 603 | 479 | 525 | 567 | 271* | 6 012* | 502 |
| 2000 | 285 | 445 | 396 | 402 | 412 | 411 | 381 | 496 | 313 | 386 | 418 | 323 | 4 668 | 389 |
| 2001 | 252 | 304 | 355 | 317 | 390 | 324 | 400 | 373 | 301 | 332* | 320 | 234 | 3 902* | 325 |
| 2002 | 215 | 268 | 265 | 310 | 251* | 245 | 268 | 260 | 221 | 248 | 247* | 150 | 2 948* | 245 |
| 2003 | 128 | 129 | 203* | 231* | 153* | 217* | 198* | 183* | 184* | 197^ | | | | 182 |

^ Preliminary

* Revised

Explanatory notes

- Introduction**
- 1** Statistics South Africa (Stats SA) collects administrative information on liquidations from the Registrar of Companies and Close Corporations, Department of Trade and Industry, while information on insolvencies is gathered from Notices of the Master of the Supreme Court which appears in the Government Gazette.
- 2** This statistical release reflects voluntary and compulsory liquidations of companies and close corporations and insolvencies of individuals and partnerships.
- Scope of the survey**
- 3** This survey covers -
- the total number of companies and close corporations which were liquidated; and
 - the total number of individuals and partnerships placed under final sequestration.
- Related publications**
- 4** Users may also wish to refer to the following publications which are available from Stats SA -
- *Bulletin of Statistics.*
 - *SA Statistics.*
- Unpublished statistics**
- 5** In some cases Stats SA can also make available statistics which are not published. The statistics can be made available in one or more of the following ways: computer printout, CD or diskette. Generally a charge is made for providing unpublished statistics.
- Symbols and abbreviations**
- 6** CD Compact Disc
Stats SA Statistics South Africa

Glossary

| | |
|-------------------------------|--|
| Compulsory liquidation | A compulsory liquidation takes place when the affairs of a company or close corporation are wound up by order of the court. |
| Insolvency | An insolvency refers to an individual or partnership which is unable to pay its debt and is placed under final sequestration. The number of insolvencies does not refer to the number of persons involved, as a partnership which is unable to pay its debt is regarded as one insolvency, irrespective of the number of partners. |
| Liquidation | A liquidation refers to the winding-up of the affairs of a company or close corporation when liabilities exceed assets and it can be resolved by voluntarily action or by an order of the court. |
| Voluntary liquidation | A voluntary liquidation takes place when a company or close corporation, by own choice, resolves to wind-up its affairs. |

General

Stats SA publishes approximately 300 different statistical releases each year. It is not economically viable to produce them in more than one of South Africa's eleven official languages. Since the releases are used extensively, not only locally but also by international economic and social-scientific communities, Stats SA releases are published in English only.

Stats SA has copyright on this publication. Users may apply the information as they wish, provided that they acknowledge Stats SA as the source of the basic data wherever they process, apply, utilise, publish or distribute the data; and also that they specify that the relevant application and analysis (where applicable) result from their own processing of the data.

Stats SA products

A complete set of Stats SA publications is available at the Stats SA Library and the following libraries:

National Library of South Africa, Pretoria Division
 National Library of South Africa, Cape Town Division
 Natal Society Library, Pietermaritzburg
 Library of Parliament, Cape Town
 Bloemfontein Public Library
 Johannesburg Public Library
 Eastern Cape Library Services, King William's Town
 Central Regional Library, Polokwane
 Central Reference Library, Nelspruit
 Central Reference Collection, Kimberley
 Central Reference Library, Mmabatho

Stats SA also provides a subscription service.

Electronic services

A large range of data are available via on-line services, diskette, CD and computer printouts. For more details about our electronic data services, contact (012) 310 8600/8390/8351/4892/8964/8095.

You can visit us on the Internet at: www.statssa.gov.za

Enquiries

| | |
|-------------------|--|
| Telephone number: | (012) 310 8600/8390/8351/4892/8964/8095 (user information services) (012) 310 8220 (technical enquiries) (012) 310 8161 (orders) (012) 310-8490 (library) |
| Fax number: | (012) 310 8332 (technical enquiries) |
| email: | AnnieG@statssa.gov.za |
| Postal address: | Private Bag X44, Pretoria, 0001 |