



**Statistics
South Africa**



The South Africa I know, the home I understand

Statistical release

P0043

Statistics of liquidations and insolvencies (Preliminary)

May 2015

**Embargoed until:
22 June 2015
14:30**

Enquiries:

Nicolai Claassen
Tel: (012) 310 8249

Forthcoming issue:

June 2015

Expected release date:

27 July 2015

Contents

Liquidations: results for May 2015	2
Table A – Number of liquidations.....	2
Figure 1 – Number of liquidations.....	2
Insolvencies: results for April 2015	3
Table B – Number of insolvencies	3
Figure 2 – Number of insolvencies	3
Tables	4
Table 1 – Total liquidations according to industry (number)	4
Table 1.1 – Liquidations of companies according to industry (number)	4
Table 1.2 – Liquidations of close corporations according to industry (number)	4
Table 2 – Total liquidations (number)	5
Table 2.1 – Compulsory liquidations (number).....	5
Table 2.2 – Voluntary liquidations (number).....	5
Table 3 – Total liquidations of companies (number).....	6
Table 3.1 – Compulsory liquidations of companies (number).....	6
Table 3.2 – Voluntary liquidations of companies (number).....	6
Table 4 – Total liquidations of close corporations (number)	7
Table 4.1 – Compulsory liquidations of close corporations (number).....	7
Table 4.2 – Voluntary liquidations of close corporations (number).....	7
Table 5 – Insolvencies of individuals and partnerships (number).....	8
Explanatory notes	9
Glossary	9
General information	10

Liquidations: results for May 2015

Table A – Number of liquidations

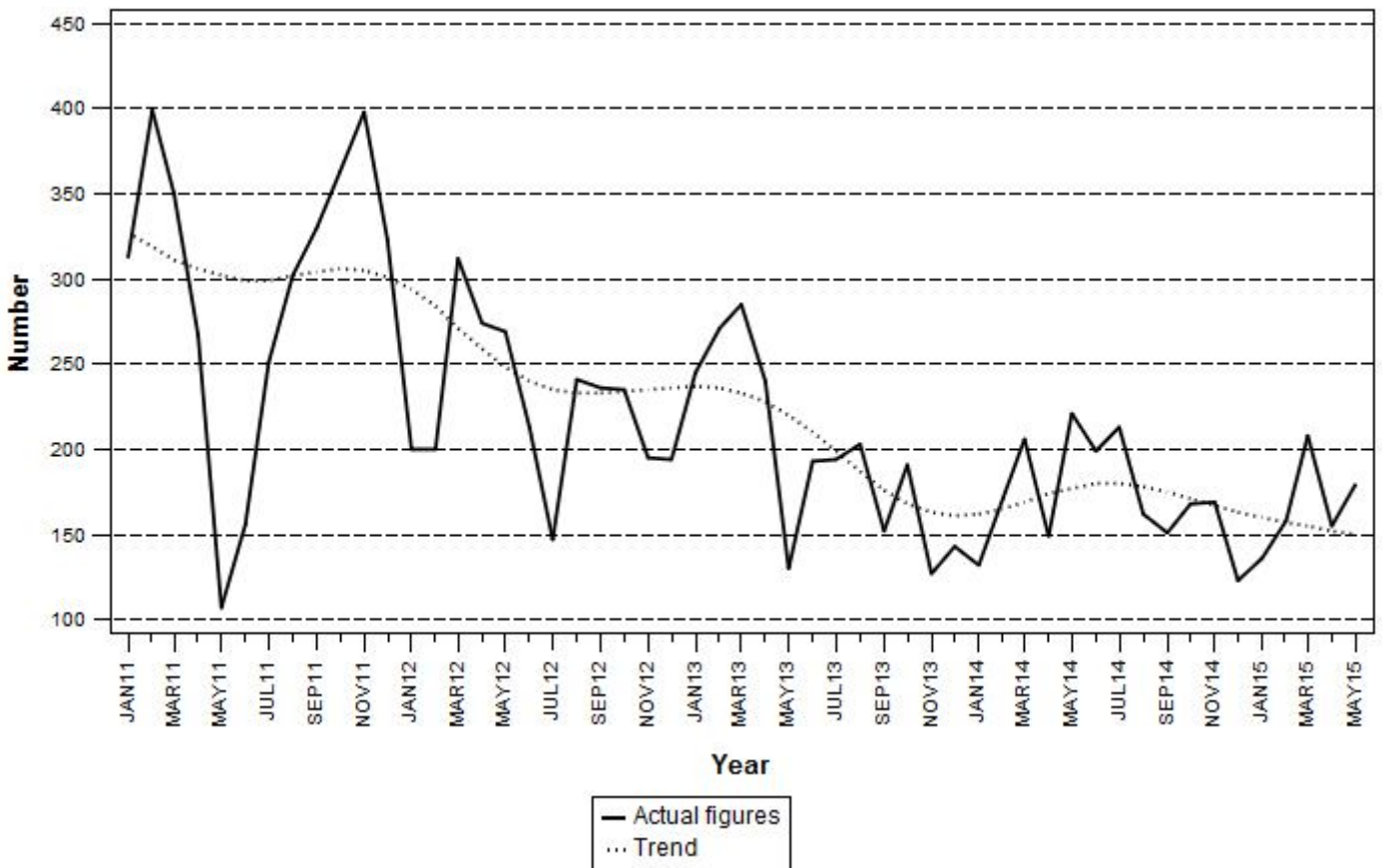
Number of liquidations May 2015	% change between May 2014 and May 2015	% change between March to May 2014 and March to May 2015	% change between January to May 2014 and January to May 2015
179	-19,0	-5,9	-4,9

The total number of liquidations recorded decreased by 19,0% (42 fewer cases) year-on-year in May 2015. Voluntary liquidations decreased by 33 cases and compulsory liquidations decreased by 9 cases.

The largest year-on-year decrease in total liquidations in May 2015 related to businesses in the financing, insurance, real estate and business services industry (31 fewer liquidations).

There was a decrease of 5,9% in the three months ended May 2015 compared with the three months ended May 2014.

Figure 1 – Number of liquidations



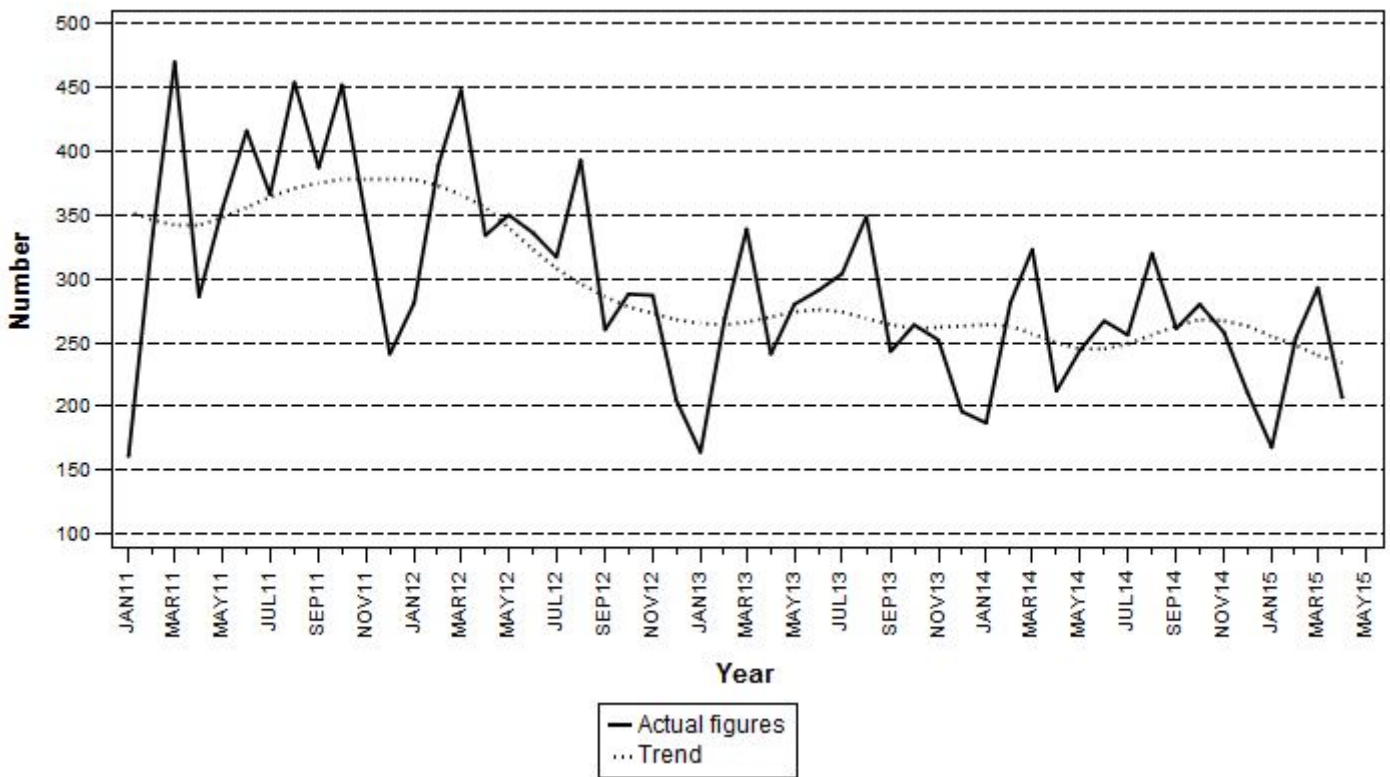
Insolvencies: results for April 2015

Table B – Number of insolvencies

Number of insolvencies April 2015	% change between April 2014 and April 2015	% change between February to April 2014 and February to April 2015	% change between January to April 2014 and January to April 2015
207	-2,4	-7,6	-8,1

The estimated number of insolvencies decreased by 2,4% year-on-year in April 2015. A 7,6% decrease was estimated between the three months ended April 2014 and the three months ended April 2015. There was a decrease of 8,1% in the first four months of 2015 compared with the first four months of 2014.

Figure 2 – Number of insolvencies



**PJ Lehohla
Statistician-General**

Tables

Table 1 – Total liquidations according to industry (number)

Industry	January - May 2015			May 2014			April 2015			May 2015		
	C	V	Total	C	V	Total	C	V	Total	C	V	Total
1.Agriculture, hunting, forestry and fishing	3	2	5	0	0	0	0	1	1	0	1	1
2.Mining and quarrying	1	4	5	0	3	3	0	1	1	1	0	1
3.Manufacturing	4	42	46	0	10	10	0	5	5	1	11	12
4.Electricity, gas and water	0	16	16	0	1	1	0	9	9	0	3	3
5.Construction	5	61	66	1	10	11	0	30	30	0	5	5
6.Wholesale and retail trade, catering and accommodation	22	176	198	5	47	52	1	22	23	3	52	55
7.Transport, storage, communication	1	46	47	2	7	9	0	24	24	0	4	4
8.Financing, insurance, real estate, business services	44	260	304	18	78	96	5	39	44	11	54	65
9.Community, social, personal services	21	128	149	3	36	39	1	17	18	4	29	33
Total number of liquidations	101	735	836	29	192	221	7	148	155	20	159	179

Table 1.1 – Liquidations of companies according to industry (number)

Industry	January - May 2015			May 2014			April 2015			May 2015		
	C	V	Total	C	V	Total	C	V	Total	C	V	Total
1.Agriculture, hunting, forestry and fishing	1	2	3	0	0	0	0	1	1	0	1	1
2.Mining and quarrying	0	4	4	0	3	3	0	1	1	0	0	0
3.Manufacturing	1	10	11	0	1	1	0	1	1	1	4	5
4.Electricity, gas and water	0	1	1	0	0	0	0	0	0	0	1	1
5.Construction	4	12	16	0	2	2	0	2	2	0	0	0
6.Wholesale and retail trade, catering and accommodation	13	76	89	3	25	28	1	17	18	2	17	19
7.Transport, storage, communication	0	8	8	1	2	3	0	0	0	0	2	2
8.Financing, insurance, real estate, business services	36	141	177	13	31	44	4	26	30	10	25	35
9.Community, social, personal services	9	99	108	3	24	27	0	17	17	3	21	24
Total number of liquidations	64	353	417	20	88	108	5	65	70	16	71	87

Table 1.2 – Liquidations of close corporations according to industry (number)

Industry	January - May 2015			May 2014			April 2015			May 2015		
	C	V	Total	C	V	Total	C	V	Total	C	V	Total
1.Agriculture, hunting, forestry and fishing	2	0	2	0	0	0	0	0	0	0	0	0
2.Mining and quarrying	1	0	1	0	0	0	0	0	0	1	0	1
3.Manufacturing	3	32	35	0	9	9	0	4	4	0	7	7
4.Electricity, gas and water	0	15	15	0	1	1	0	9	9	0	2	2
5.Construction	1	49	50	1	8	9	0	28	28	0	5	5
6.Wholesale and retail trade, catering and accommodation	9	100	109	2	22	24	0	5	5	1	35	36
7.Transport, storage, communication	1	38	39	1	5	6	0	24	24	0	2	2
8.Financing, insurance, real estate, business services	8	119	127	5	47	52	1	13	14	1	29	30
9.Community, social, personal services	12	29	41	0	12	12	1	0	1	1	8	9
Total number of liquidations	37	382	419	9	104	113	2	83	85	4	88	92

C = Compulsory.

V = Voluntary.

Table 2 – Total liquidations (number)

Month	2009	2010	2011	2012	2013	2014	2015
January	270	206	313	200	245	132	136
February	391	328	399	200	271	171	158
March	347	410	350	312	285	206	208
April	349	358	267	274	240	149	155
May	283	384	107	269	130	221	179
June	311	379	156	213	193	199	
July	428	281	251	147	194	213	
August	264	243	302	241	203	162	
September	334	341	330	236	152	151	
October	287	393	363	235	191	168	
November	487	344	398	195	127	169	
December	382	325	323	194	143	123	
Total	4 133	3 992	3 559	2 716	2 374	2 064	

Table 2.1 – Compulsory liquidations (number)

Month	2009	2010	2011	2012	2013	2014	2015
January	54	3	45	61	3	22	13
February	26	19	26	27	26	12	22
March	10	23	12	39	53	18	39
April	41	17	16	4	17	35	7
May	26	30	30	3	9	29	20
June	20	12	2	14	16	89	
July	37	35	8	1	18	47	
August	49	22	14	63	19	25	
September	2	20	18	58	13	20	
October	17	49	61	21	9	33	
November	12	20	74	18	4	23	
December	1	34	75	8	24	13	
Total	295	284	381	317	211	366	

Table 2.2 – Voluntary liquidations (number)

Month	2009	2010	2011	2012	2013	2014	2015
January	216	203	268	139	242	110	123
February	365	309	373	173	245	159	136
March	337	387	338	273	232	188	169
April	308	341	251	270	223	114	148
May	257	354	77	266	121	192	159
June	291	367	154	199	177	110	
July	391	246	243	146	176	166	
August	215	221	288	178	184	137	
September	332	321	312	178	139	131	
October	270	344	302	214	182	135	
November	475	324	324	177	123	146	
December	381	291	248	186	119	110	
Total	3 838	3 708	3 178	2 399	2 163	1 698	

Table 3 – Total liquidations of companies (number)

Month	2009	2010	2011	2012	2013	2014	2015
January	114	96	156	97	121	74	79
February	229	161	199	75	123	87	80
March	152	177	145	115	147	89	101
April	148	176	97	105	104	78	70
May	109	203	36	130	56	108	87
June	147	194	52	105	96	104	
July	201	128	81	74	92	109	
August	100	93	180	133	97	86	
September	162	136	190	136	82	75	
October	136	204	167	109	100	78	
November	161	174	152	72	55	75	
December	230	197	151	108	75	65	
Total	1 889	1 939	1 606	1 259	1 148	1 028	

Table 3.1 – Compulsory liquidations of companies (number)

Month	2009	2010	2011	2012	2013	2014	2015
January	18	3	18	37	3	16	9
February	11	12	16	11	5	7	16
March	8	19	12	11	32	6	18
April	27	13	0	2	10	24	5
May	9	24	3	3	7	20	16
June	14	3	1	14	11	54	
July	20	25	4	0	9	26	
August	10	11	0	34	11	20	
September	1	3	18	41	9	13	
October	10	38	59	14	4	22	
November	3	15	42	6	2	6	
December	0	30	47	2	14	8	
Total	131	196	220	175	117	222	

Table 3.2 – Voluntary liquidations of companies (number)

Month	2009	2010	2011	2012	2013	2014	2015
January	96	93	138	60	118	58	70
February	218	149	183	64	118	80	64
March	144	158	133	104	115	83	83
April	121	163	97	103	94	54	65
May	100	179	33	127	49	88	71
June	133	191	51	91	85	50	
July	181	103	77	74	83	83	
August	90	82	180	99	86	66	
September	161	133	172	95	73	62	
October	126	166	108	95	96	56	
November	158	159	110	66	53	69	
December	230	167	104	106	61	57	
Total	1 758	1 743	1 386	1 084	1 031	806	

Table 4 – Total liquidations of close corporations (number)

Month	2009	2010	2011	2012	2013	2014	2015
January	156	110	157	103	124	58	57
February	162	167	200	125	148	84	78
March	195	233	205	197	138	117	107
April	201	182	170	169	136	71	85
May	174	181	71	139	74	113	92
June	164	185	104	108	97	95	
July	227	153	170	73	102	104	
August	164	150	122	108	106	76	
September	172	205	140	100	70	76	
October	151	189	196	126	91	90	
November	326	170	246	123	72	94	
December	152	128	172	86	68	58	
Total	2 244	2 053	1 953	1 457	1 226	1 036	

Table 4.1 – Compulsory liquidations of close corporations (number)

Month	2009	2010	2011	2012	2013	2014	2015
January	36	0	27	24	0	6	4
February	15	7	10	16	21	5	6
March	2	4	0	28	21	12	21
April	14	4	16	2	7	11	2
May	17	6	27	0	2	9	4
June	6	9	1	0	5	35	
July	17	10	4	1	9	21	
August	39	11	14	29	8	5	
September	1	17	0	17	4	7	
October	7	11	2	7	5	11	
November	9	5	32	12	2	17	
December	1	4	28	6	10	5	
Total	164	88	161	142	94	144	

Table 4.2 – Voluntary liquidations of close corporations (number)

Month	2009	2010	2011	2012	2013	2014	2015
January	120	110	130	79	124	52	53
February	147	160	190	109	127	79	72
March	193	229	205	169	117	105	86
April	187	178	154	167	129	60	83
May	157	175	44	139	72	104	88
June	158	176	103	108	92	60	
July	210	143	166	72	93	83	
August	125	139	108	79	98	71	
September	171	188	140	83	66	69	
October	144	178	194	119	86	79	
November	317	165	214	111	70	77	
December	151	124	144	80	58	53	
Total	2 080	1 965	1 792	1 315	1 132	892	

Table 5 – Insolvencies of individuals and partnerships (number)

Month	2009	1/ 2010	1/ 2011	1/ 2012	1/ 2013	1/ 2014	1/ 2015
January	196	177	161	281	164	187	168
February	378	334	335	389	269	281	254
March	536	390	470	448	339	323	293
April	531	325	286	334	241	212	207
May	612	397	355	350	280	244	
June	613	351	416	336	291	267	
July	594	397	366	317	304	256	
August	694	376	454	393	349	320	
September	485	406	387	260	243	261	
October	450	382	452	288	264	280	
November	520	385	345	287	252	258	
December	469	327	241	205	196	211	
Total	6 078	4 247	4 268	3 888	3 192	3 100	

1/ Preliminary.

Explanatory notes

- | | | |
|----------------------------------|----------|--|
| Introduction | 1 | Statistics South Africa (Stats SA) collects administrative information on liquidations from Companies and Intellectual Property Commission, Department of Trade and Industry, while information on insolvencies is gathered from Notices of the Master of the Supreme Court that appear in the Government Gazette. |
| | 2 | This statistical release reflects voluntary and compulsory liquidations of companies and close corporations and insolvencies of individuals and partnerships. |
| Purpose of the survey | 3 | The aggregated data in this release are used by the private and public sectors to measure economic performance and are also an important indicator of the scope of unpaid debt in South Africa. |
| | 4 | Due to insolvencies figures being available late, the data on insolvencies are published a month later than liquidations. |
| Scope of the survey | 5 | This survey covers the total number of: <ul style="list-style-type: none"> • companies and close corporations which were liquidated; and • individuals and partnerships placed under final sequestration. |
| Related publications | 6 | Users may also wish to refer to the following publications which are available from Stats SA: <ul style="list-style-type: none"> • <i>Bulletin of Statistics</i>; and • <i>South African Statistics</i>. |
| Symbols and abbreviations | 7 | Stats SA – Statistics South Africa |

Glossary

- | | |
|-------------------------------|---|
| Compulsory liquidation | A compulsory liquidation takes place when the affairs of a company or close corporation are wound up by order of the court. |
| Insolvency | Insolvency refers to an individual or partnership which is unable to pay its debt and is placed under final sequestration. The number of insolvencies does not refer to the number of persons involved, as a partnership which is unable to pay its debt is regarded as one insolvency, irrespective of the number of partners. |
| Liquidation | Liquidation refers to the winding-up of the affairs of a company or close corporation when liabilities exceed assets and it can be resolved by voluntary action or by an order of the court. |
| Voluntary liquidation | A voluntary liquidation takes place when a company or close corporation, by own choice, resolves to wind-up its affairs. |

General information

Stats SA publishes approximately 300 different statistical releases each year. It is not economically viable to produce them in more than one of South Africa's eleven official languages. Since the releases are used extensively, not only locally but also by international economic and social-scientific communities, Stats SA releases are published in English only.

Stats SA has copyright on this publication. Users may apply the information as they wish, provided that they acknowledge Stats SA as the source of the basic data wherever they process, apply, utilise, publish or distribute the data; and also that they specify that the relevant application and analysis (where applicable) result from their own processing of the data.

Stats SA products

A complete set of Stats SA publications is available at the Stats SA library and the following libraries:

National Library of South Africa, Pretoria Division
National Library of South Africa, Cape Town Division
Natal Society Library, Pietermaritzburg
Library of Parliament, Cape Town
Bloemfontein Public Library
Johannesburg Public Library
Eastern Cape Library Services, King William's Town
Central Regional Library, Polokwane
Central Reference Library, Mbombela
Central Reference Collection, Kimberley
Central Reference Library, Mmabatho

Stats SA also provides a subscription service.

Electronic services

A large range of data is available via online services. For more detail about our electronic services, contact Stats SA's user information service at (012) 310 8600.

You can visit us on the Internet at: www.statssa.gov.za

Enquiries

Telephone number: (012) 310 4897 (technical enquiries)
(012) 310 8600 (user information services)
(012) 310 8044 (orders/subscription services)

Fax number: (012) 310 8332 (technical enquiries)

email: onicama@statssa.gov.za (technical enquiries)
info@statssa.gov.za (user information services)
magdaj@statssa.gov.za (orders/subscription services)

Postal address: Private Bag X44, Pretoria, 0001

Produced by Stats SA