

**Statistics  
South Africa**

**Statistical release  
P0043**

Dipalopalo tsa Aforika Borwa • Statistieke Suid-Afrika • Tistatistiki ta Afrika-Dzonga • Ukuqokelelwa kwamanani eNingizimu Afrika

**Statistics of liquidations  
and insolvencies  
(preliminary)  
May 2005**

**Embargoed until:  
30 June 2005  
09:30**

**These figures are issued as preliminary**

**Table A - Key figures as at the end of May 2005 regarding liquidations**

Actual estimates	Number of liquidations May 2005	% change between May 2004 and May 2005	% change between December 2004 to February 2005 and March 2005 to May 2005
	265	+1,1	-11,0

**Key findings as at the end of May 2005 regarding liquidations**

**Total number of liquidations decreases**

*The total number of liquidations recorded for the three months ended May 2005 decreased by 11,0 % (from 881 to 784) compared with the previous three months. However, the total number of liquidations recorded for May 2005 increased by 1,1% (from 262 to 265) compared with May 2004.*

The decrease of 11,0% in the total number of liquidations for the three months ended 2005 compared with the previous three months was due to a decrease of 18,0% (from 139 to 114) in compulsory liquidations.

The increase of 1,1% in the total number of liquidations for May 2005 compared with May 2004 was due to an increase of 64,9% (from 37 to 61) in compulsory liquidations.

**Table B - Key figures regarding insolvencies for April 2005**

Actual estimates	Number of insolvencies April 2005	% change between April 2004 and April 2005	% change between November 2004 to January 2004 and February 2005 to April 2005
	101	-51,7	-4,2

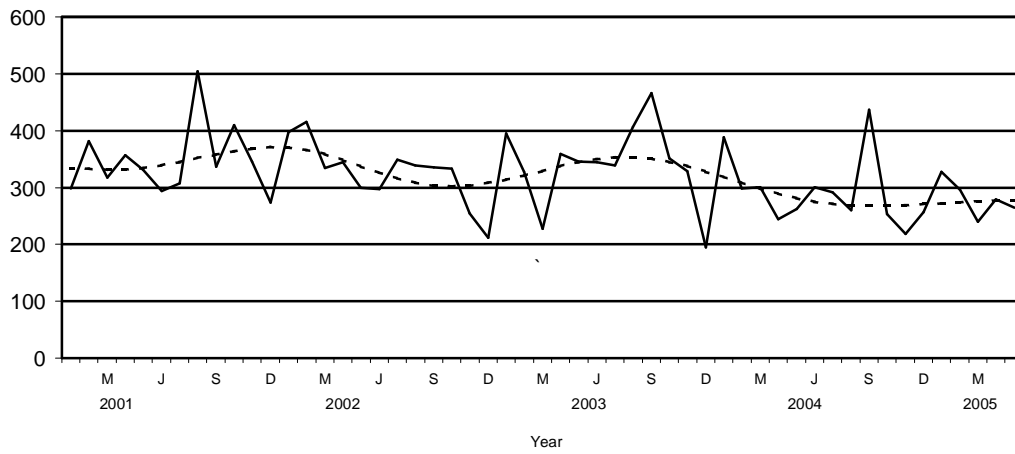
**Key findings as at the end of April 2005 regarding insolvencies**

**Total number of insolvencies decreases**

The total number of insolvencies recorded for the three months ended April 2005 decreased by 4,2% (from 334 to 320) compared with three months ended April 2004. The total number of insolvencies for April 2005 decreased by 51,7% (from 209 to 101) compared with April 2004.

Figures 1 and 2 outline the total number of liquidations and insolvencies from 2001 to 2005.

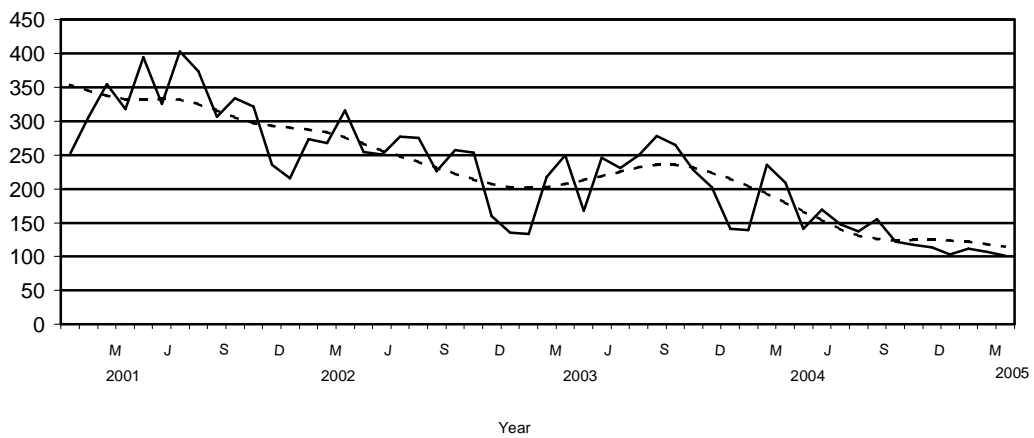
Figure 1 – Total number of liquidations



Source : Stats SA



Figure 2 - Total number of insolvencies



Source : Stats SA



PP  
PJ Lehohla  
Statistician-General

**Contents**

	Page
<b>Notes</b> .....	4
<b>Tables</b>	
Table 1 Total number of liquidations according to industry .....	5
Table 2 Number of liquidations of companies according to industry .....	5
Table 3 Number of liquidations of close corporations according to industry .....	5
Table 4 Total number of liquidations: 1999 to 2005 .....	6
Table 5 Total number of compulsory liquidations: 1999 to 2005 .....	6
Table 6 Total number of voluntary liquidations: 1999 to 2005 .....	6
Table 7 Number of liquidations of companies: 1999 to 2005 .....	7
Table 8 Number of compulsory liquidations of companies: 1999 to 2005 .....	7
Table 9 Number of voluntary liquidations of companies: 1999 to 2005 .....	7
Table 10 Number of liquidations of close corporations: 1999 to 2005 .....	8
Table 11 Number of compulsory liquidations of close corporations: 1999 to 2005 .....	8
Table 12 Number of voluntary liquidations of close corporations: 1999 to 2005 .....	8
Table 13 Total number of insolvencies: 1999 to 2005 .....	9
Table 14 Percentage change between the current month and the corresponding month of the previous year regarding the number of liquidations .....	10
Table 15 Percentage change between the current quarter and the previous quarter regarding the number of liquidations .....	10
Table 16 Percentage change between the current month and the corresponding month of the previous year regarding the number of insolvencies .....	10
Table 17 Percentage change between the current quarter and the previous quarter regarding the number of insolvencies .....	10
<b>Explanatory notes</b> .....	11
<b>Glossary</b> .....	12
<b>General information</b> .....	13

**Notes****Forthcoming issue****Issue****Expected release date**

June 2005

28 July 2005

**Data source**

Information on liquidations is obtained from the Registrar of Companies and Close Corporations, Department of Trade and Industry, while information on insolvencies is based on Notices of the Master of the Supreme Court, which appear in the Government Gazette. The aggregated data in this release are used by the private and public sectors to measure economic performance and are also an important indicator of the scope of unpaid debt in South Africa.

**Table 1- Total number of liquidations according to industry**

Industry	2004 Total			May 2004			April 2005			May 2005		
	Compul-sory	Volun-tary	Total	Compul-sory	Volun-tary	Total	Compul-sory	Volun-tary	Total	Compul-sory	Volun-tary	Total
Agriculture, hunting, forestry and fishing	13	42	55	3	5	8	0	4	4		1	1
Mining and quarrying	7	22	29	0	0	0	0	2	2	1	2	3
Manufacturing	52	218	270	1	15	16	0	9	9	3	17	20
Electricity, gas and water	2	6	8	0	0	0	0	0	0	0	0	0
Construction	43	211	254	1	13	14	3	20	23	6	27	33
Wholesale and retail trade, catering and accommodation	182	987	1169	14	85	99	8	60	68	29	60	89
Transport, storage and communication	23	112	135	1	10	11	3	5	8	2	5	7
Financing, insurance, real estate and business services	191	1064	1255	9	80	89	2	77	79	18	66	84
Community, social and personal services	51	284	335	8	17	25	2	84	86	2	26	28
Total number of liquidations	564	2946	3510	37	225	262	18	261	279	61	204	265

**Table 2 – Number of liquidations of companies according to industry**

Industry	2004 Total			May 2004			April 2005			May 2005		
	Compul-sory	Volun-tary	Total	Compul-sory	Volun-tary	Total	Compul-sory	Volun-tary	Total	Compul-sory	Volun-tary	Total
Agriculture, hunting, forestry and fishing	2	22	24	0	3	3	0	2	2	0	0	0
Mining and quarrying	5	9	14	0	0	0	0	2	2	1	1	2
Manufacturing	20	85	105	1	3	4	0	7	7	2	5	7
Electricity, gas and water	1	4	5	0	0	0	0	0	0	0	0	0
Construction	12	38	50	1	3	4	2	4	6	2	6	8
Wholesale and retail trade, catering and accommodation	58	369	427	5	37	42	6	26	32	11	18	29
Transport, storage and communication	6	42	48	1	3	4	2	1	3	0	2	2
Financing, insurance, real estate and business services	78	504	582	5	46	51	1	39	40	12	36	48
Community, social and personal services	41	236	277	7	13	20	2	82	84	2	24	26
Total number of liquidations	223	1309	1532	20	108	128	13	163	176	30	92	122

**Table 3 – Number of liquidations of close corporations according to industry**

Industry	2004 Total			May 2004			April 2005			May 2005		
	Compul-sory	Volun-tary	Total	Compul-sory	Volun-tary	Total	Compul-sory	Volun-tary	Total	Compul-sory	Volun-tary	Total
Agriculture, hunting, forestry and fishing	11	20	31	3	2	5	0	2	2	0	1	1
Mining and quarrying	2	13	15	0	0	0	0	0	0	0	1	1
Manufacturing	32	133	165	0	12	12	0	2	2	1	12	13
Electricity, gas and water	1	2	3	0	0	0	0	0	0	0	0	0
Construction	31	173	204	0	10	10	1	16	17	4	21	25
Wholesale and retail trade, catering and accommodation	124	618	742	9	48	57	2	34	36	18	42	60
Transport, storage and communication	17	70	87	0	7	7	1	4	5	2	3	5
Financing, insurance, real estate and business services	113	560	673	4	34	38	1	38	39	6	30	36
Community, social and personal services	10	48	58	1	4	5	0	2	2		2	2
Total number of liquidations	341	1637	1978	17	117	134	5	98	103	31	112	143

**Table 4 - Total number of liquidations: 1999 to 2005**

Month	1999	2000	2001	2002	2003	2004	2005
January	367	193	298	398	395	388	328
February	367	229	382	416	328	298	296
March	332	326	317	334	227	301	240
April	370	273	357	345	359	244	279
May	379	258	331	299	346	262	265
June	297	383	294	297	345	301	
July	333	314	307	349	339	291	
August	326	511	504	339	406	260	
September	421	490	337	336	466	437	
October	277	269	410	333	351	253	
November	341	348	346	254	329	218	
December	202	211	273	211	195	257	
<b>Year</b>	<b>4 012</b>	<b>3 805</b>	<b>4 156</b>	<b>3 911</b>	<b>4 086</b>	<b>3 510</b>	

**Table 5 - Total number of compulsory liquidations: 1999 to 2005**

Month	1999	2000	2001	2002	2003	2004	2005
January	244	85	71	78	76	42	30
February	177	78	114	87	65	38	70
March	132	172	68	68	46	57	35
April	177	125	125	87	63	32	18
May	186	57	81	60	52	37	61
June	131	190	88	69	74	63	
July	140	77	81	69	85	68	
August	132	247	256	74	120	39	
September	169	241	118	70	109	83	
October	102	44	137	54	70	43	
November	159	128	74	64	60	23	
December	95	71	71	45	37	39	
<b>Year</b>	<b>1 844</b>	<b>1 515</b>	<b>1 284</b>	<b>825</b>	<b>857</b>	<b>564</b>	

**Table 6 - Total number of voluntary liquidations: 1999 to 2005**

Month	1999	2000	2001	2002	2003	2004	2005
January	123	108	227	320	319	346	298
February	190	151	268	329	263	260	226
March	200	154	249	266	181	244	205
April	193	148	232	258	296	212	261
May	193	201	250	239	294	225	204
June	166	193	206	228	271	238	
July	193	237	226	280	254	223	
August	194	264	248	265	286	221	
September	252	249	219	266	357	354	
October	175	225	273	279	281	210	
November	182	220	272	190	269	195	
December	107	140	202	166	158	218	
<b>Year</b>	<b>2 168</b>	<b>2 290</b>	<b>2 872</b>	<b>3 086</b>	<b>3 229</b>	<b>2 946</b>	

**Table 7 – Number of liquidations of companies: 1999 to 2005**

Month	1999	2000	2001	2002	2003	2004	2005
January	134	91	107	130	200	191	130
February	198	151	119	212	188	132	154
March	165	241	132	183	127	148	123
April	166	166	129	161	151	119	176
May	142	130	156	117	162	128	122
June	114	173	129	145	178	136	
July	114	89	144	183	141	132	
August	169	152	149	173	202	114	
September	157	93	136	164	260	141	
October	145	106	166	118	235	126	
November	136	112	181	106	136	90	
December	98	122	123	166	130	75	
<b>Year</b>	<b>1 738</b>	<b>1 626</b>	<b>1 671</b>	<b>1 858</b>	<b>2 110</b>	<b>1 532</b>	

**Table 8 – Number of compulsory liquidations of companies: 1999 to 2005**

Month	1999	2000	2001	2002	2003	2004	2005
January	69	32	34	19	37	16	6
February	96	57	17	46	28	15	43
March	70	147	28	32	17	32	23
April	87	87	27	53	17	6	13
May	73	40	41	12	28	20	30
June	46	100	53	29	31	16	
July	43	32	41	33	29	31	
August	77	48	38	17	69	11	
September	61	31	54	22	60	33	
October	65	21	51	22	42	22	
November	76	25	35	25	38	12	
December	47	39	24	29	27	9	
<b>Year</b>	<b>810</b>	<b>659</b>	<b>443</b>	<b>339</b>	<b>423</b>	<b>223</b>	

**Table 9 - Number of voluntary liquidations of companies: 1999 to 2005**

Month	1999	2000	2001	2002	2003	2004	2005
January	65	59	73	111	163	175	124
February	102	94	102	166	160	117	111
March	95	94	104	151	110	116	100
April	79	79	102	108	134	113	163
May	69	90	115	105	134	108	92
June	68	73	76	116	147	120	
July	71	57	103	150	112	101	
August	92	104	111	156	133	103	
September	96	62	82	142	200	108	
October	80	85	115	96	193	104	
November	60	87	146	81	98	78	
December	51	83	99	137	103	66	
<b>Year</b>	<b>928</b>	<b>967</b>	<b>1 228</b>	<b>1 519</b>	<b>1 687</b>	<b>1 309</b>	



**Table 10 - Number of liquidations of close corporations: 1999 to 2005**

Month	1999	2000	2001	2002	2003	2004	2005
January	233	102	191	268	195	197	198
February	169	78	263	204	140	166	142
March	167	85	185	151	100	153	117
April	204	107	228	184	208	125	103
May	237	128	175	182	184	134	143
June	183	210	165	152	167	165	
July	219	225	163	166	198	159	
August	157	359	355	166	204	146	
September	264	397	201	172	206	296	
October	132	163	244	215	116	127	
November	205	236	165	148	193	128	
December	104	89	150	45	65	182	
<b>Year</b>	<b>2 274</b>	<b>2 179</b>	<b>2 485</b>	<b>2 053</b>	<b>1 976</b>	<b>1 978</b>	

**Table 11 - Number of compulsory liquidations of close corporations: 1999 to 2005**

Month	1999	2000	2001	2002	2003	2004	2005
January	175	53	37	59	39	26	24
February	81	21	97	41	37	23	27
March	62	25	40	36	29	25	12
April	90	38	98	34	46	26	5
May	113	17	40	48	24	17	31
June	85	90	35	40	43	47	
July	97	45	40	36	56	37	
August	55	199	218	57	51	28	
September	108	210	64	48	49	50	
October	37	23	86	32	28	21	
November	83	103	39	39	22	11	
December	48	32	47	16	10	30	
<b>Year</b>	<b>1 034</b>	<b>856</b>	<b>841</b>	<b>486</b>	<b>434</b>	<b>341</b>	

**Table 12 – Number of voluntary liquidations of close corporations: 1999 to 2005**

Month	1999	2000	2001	2002	2003	2004	2005
January	58	49	154	209	156	171	174
February	88	57	166	163	103	143	115
March	105	60	145	115	71	128	105
April	114	69	130	150	162	99	98
May	124	111	135	134	160	117	112
June	98	120	130	112	124	118	
July	122	180	123	130	142	122	
August	102	160	137	109	153	118	
September	156	187	137	124	157	246	
October	95	140	158	183	88	106	
November	122	133	126	109	171	117	
December	56	57	103	29	55	152	
<b>Year</b>	<b>1 240</b>	<b>1 323</b>	<b>1 644</b>	<b>1 567</b>	<b>1 542</b>	<b>1 637</b>	

**Table 13 - Total number of insolvencies: 1999 to 2005**

<b>Month</b>	<b>1999</b>	<b>2000</b>	<b>2001</b>	<b>2002*</b>	<b>2003*</b>	<b>2004*</b>	<b>2005*</b>
January	354	285	253	216	135	141	103
February	372	445	306	273	134	139	112
March	645	396	355	268	218	236	107
April	475	402	318	316	250	209	101
May	547	412	394	255	168	141	
June	703	411	325	251	246	169	
July	471	384	403	277	231	148	
August	604	499	374	275	250	137	
September	479	317	307	226	278	155	
October	525	388	334	257	265	122	
November	567	418	322	254	228	117	
December	271	326	236	160	203	114	
<b>Year</b>	<b>6 013</b>	<b>4 683</b>	<b>3 927</b>	<b>3 028</b>	<b>2 606</b>	<b>1 828</b>	

\* Revised

**Table 14 – Percentage change between the current month and the corresponding month of the previous year regarding the number of liquidations**

Actual estimates	Number of liquidations May 2004	Number of liquidations May 2005	% change between May 2004 and May 2005	Difference between May 2004 and May 2005
		262	265	1,1

**Table 15 – Percentage change between the current quarter and the previous quarter regarding the number of liquidations**

Actual estimates	Number of liquidations December 2004 to February 2005	Number of liquidations March 2005 to May 2005	% change between December 2004 to February 2005 and March 2005 to May 2005	Difference between December 2004 to February 2005 and March 2005 to May 2005
		881	784	-11,0

**Table 16 – Percentage change between the current month and the corresponding month of the previous year regarding the number of insolvencies**

Actual estimates	Number of insolvencies March 2004	Number of insolvencies March 2005	% change between March 2004 and March 2005	Difference between March 2004 and March 2005
		209	101	-51,7

**Table 17 - Percentage change between the current quarter and the previous quarter regarding the number of insolvencies**

Actual estimates	Number of insolvencies November 2004 to January 2004	Number of insolvencies February 2005 to April 2005	% change between November 2004 to January 2004 and February 2005 to April 2005	Difference between November 2004 to January 2004 and February 2005 to April 2005
		334	320	-4,2



## **Glossary**

<b>Compulsory liquidation</b>	A compulsory liquidation takes place when the affairs of a company or close corporation are wound up by order of the court.
<b>Insolvency</b>	An insolvency refers to an individual or partnership which is unable to pay its debt and is placed under final sequestration. The number of insolvencies does not refer to the number of persons involved, as a partnership which is unable to pay its debt is regarded as one insolvency, irrespective of the number of partners.
<b>Liquidation</b>	A liquidation refers to the winding-up of the affairs of a company or close corporation when liabilities exceed assets and it can be resolved by voluntary action or by an order of the court.
<b>Voluntary liquidation</b>	A voluntary liquidation takes place when a company or close corporation, by own choice, resolves to wind-up its affairs.

## General information

Stats SA publishes approximately 300 different statistical releases each year. It is not economically viable to produce them in more than one of South Africa's eleven official languages. Since the releases are used extensively, not only locally but also by international economic and social-scientific communities, Stats SA releases are published in English only.

Stats SA has copyright on this publication. Users may apply the information as they wish, provided that they acknowledge Stats SA as the source of the basic data wherever they process, apply, utilise, publish or distribute the data; and also that they specify that the relevant application and analysis (where applicable) result from their own processing of the data.

### Stats SA products

A complete set of Stats SA publications is available at the Stats SA Library and the following libraries:

National Library of South Africa, Pretoria Division  
National Library of South Africa, Cape Town Division  
Natal Society Library, Pietermaritzburg  
Library of Parliament, Cape Town  
Bloemfontein Public Library  
Johannesburg Public Library  
Eastern Cape Library Services, King William's Town  
Central Regional Library, Polokwane  
Central Reference Library, Nelspruit  
Central Reference Collection, Kimberley  
Central Reference Library, Mmabatho

Stats SA also provides a subscription service.

### Electronic services

A large range of data are available via on-line services, diskette, CD and computer printouts. For more details about our electronic data services, contact (012) 310 8600/8390/8351/4892/8964/8095.

You can visit us on the internet at: [www.statssa.gov.za](http://www.statssa.gov.za)

### Enquiries

Telephone number: (012) 310 8600/ 8390/ 8351/ 4892/ 8964/ 8095 (user information services)  
(012) 310 8220 (technical enquiries)  
(012) 310 8161 (orders)  
(012) 310 8490 (library)

Fax number: (012) 310 8332 (technical enquiries)

email: [mpelim@statssa.gov.za](mailto:mpelim@statssa.gov.za) (technical enquiries)  
[info@statssa.gov.za](mailto:info@statssa.gov.za) (user information services)  
[distribution@statssa.gov.za](mailto:distribution@statssa.gov.za) (orders)

Postal address: Private Bag X44, Pretoria, 0001

*Produced by Stats SA*