



stats sa

Department:
Statistics South Africa
REPUBLIC OF SOUTH AFRICA

Private Bag X44, Pretoria, 0001, South Africa, ISlballo House, Koch Street, Salvokop, Pretoria, 0002
www.statssa.gov.za, info@statssa.gov.za, Tel +27 12 310 8911

STATISTICAL RELEASE

P0043

Statistics of liquidations and insolvencies (Preliminary)

June 2019

Embargoed until:
22 July 2019
14:30

ENQUIRIES:
Juan-Pierre Terblanche
012 310 2965

FORTHCOMING ISSUE:
July 2019

EXPECTED RELEASE DATE:
26 August 2019



Dipalopalo tsa Aforikaborwa • Dipalopalo tsa Afrika Borwa • Ezezibalo zaseNingizimu Afrika • Tshitatistika Afrika Tshipembe • Tinhlayohlayo Afrika-Dzonga
Statistieke Suid-Afrika • Dipalopalo tša Afrika Borwa • Telubalo taseNingizimu Afrika • EzeeNkcukacha maNani zoMzantsi Afrika • limbalobalo zeSewula Afrika

The South Africa I know, the home I understand



Contents

Liquidations: results for June 2019	2
Table A – Number of liquidations.....	2
Figure 1 – Number of liquidations.....	2
Insolvencies: results for May 2019	3
Table B – Number of insolvencies	3
Figure 2 – Number of insolvencies	3
Tables.....	4
Table 1 – Total liquidations according to industry (number).....	4
Table 1.1 – Liquidations of companies according to industry (number).....	4
Table 1.2 – Liquidations of close corporations according to industry (number)	4
Table 2 – Total liquidations (number)	5
Table 2.1 – Compulsory liquidations (number).....	5
Table 2.2 – Voluntary liquidations (number).....	5
Table 3 – Total liquidations of companies (number).....	6
Table 3.1 – Compulsory liquidations of companies (number)	6
Table 3.2 – Voluntary liquidations of companies (number)	6
Table 4 – Total liquidations of close corporations (number).....	7
Table 4.1 – Compulsory liquidations of close corporations (number)	7
Table 4.2 – Voluntary liquidations of close corporations (number)	7
Table 5 – Insolvencies of individuals and partnerships (number)	8
Table 6 – Seasonally adjusted number of insolvencies	8
Explanatory notes.....	9
Glossary.....	9
Technical enquiries	10
General information.....	10

Liquidations: results for June 2019

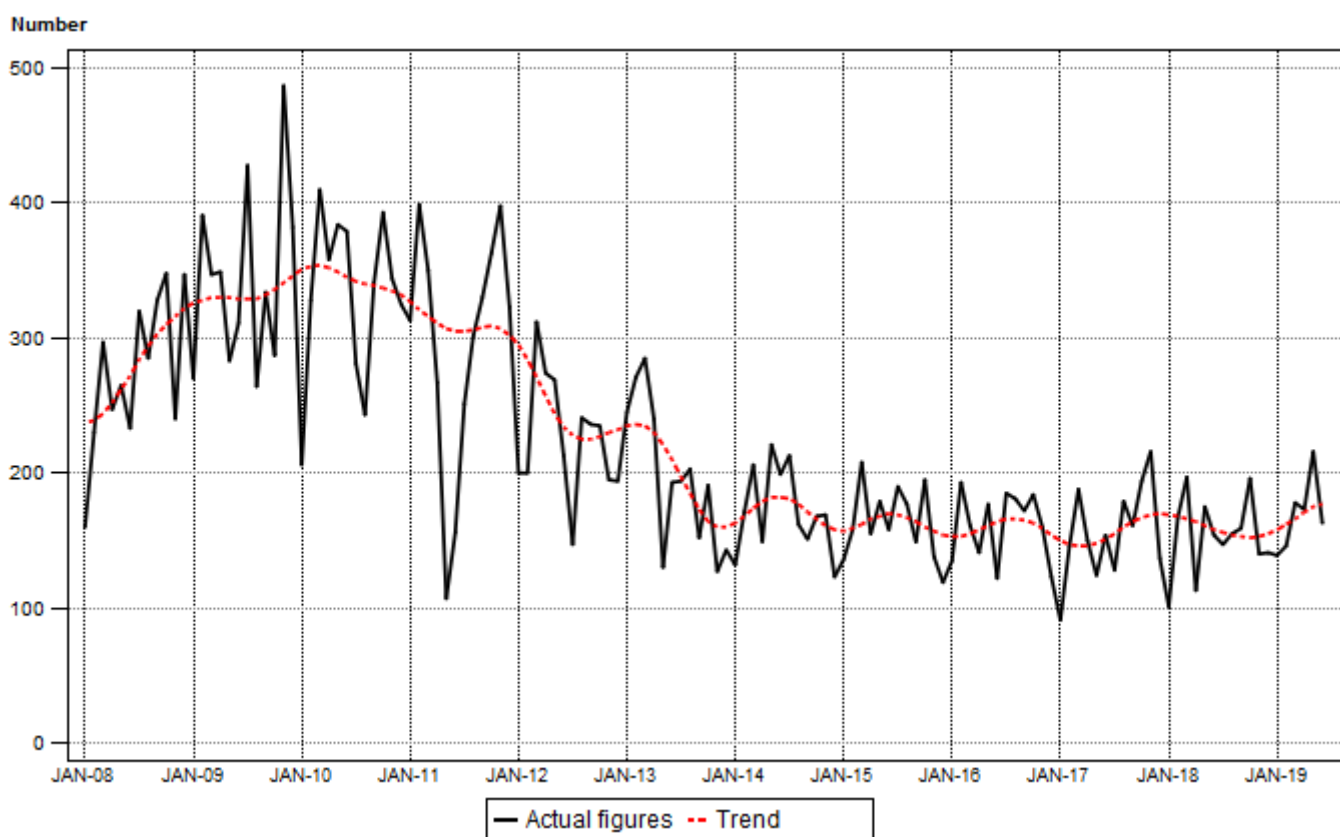
Table A – Number of liquidations

Number of liquidations June 2019	% change between June 2018 and June 2019	% change between April to June 2018 and April to June 2019	% change between January to June 2018 and January to June 2019
163	5,8	24,9	11,9

The total number of liquidations increased by 24,9% in the second quarter of 2019 compared with the second quarter of 2018. A year-on-year increase of 5,8% was recorded in June 2019.

The total number of liquidations increased by 11,9% during the first six months of 2019 compared with the first six months of 2018.

Figure 1 – Number of liquidations



Insolvencies: results for May 2019

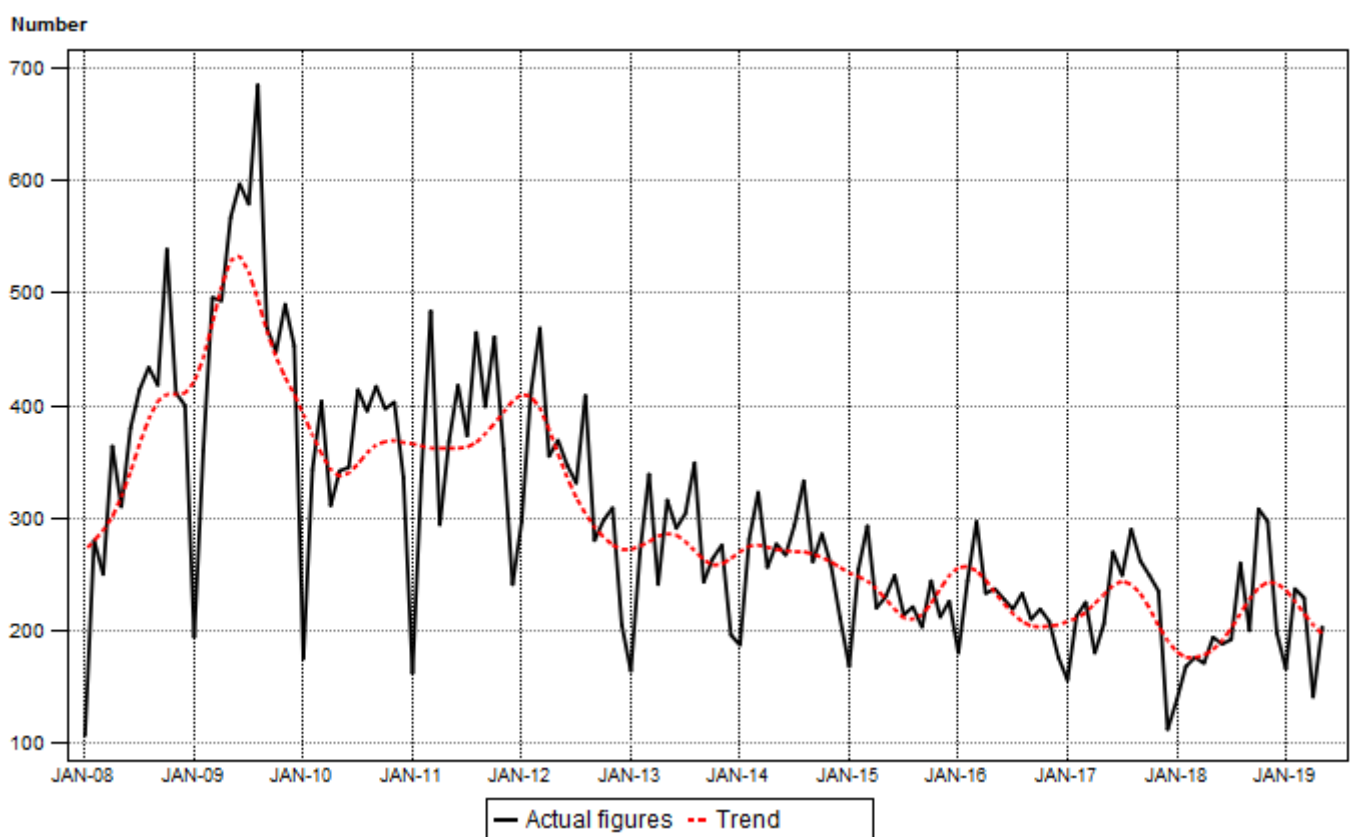
Table B – Number of insolvencies

Number of insolvencies May 2019	% change between May 2018 and May 2019	% change between March to May 2018 and March to May 2019	% change between January to May 2018 and January to May 2019
203	4,6	5,9	15,2

The estimated number of insolvencies increased by 4,6% in May 2019 compared with May 2018. A 15,2% increase was estimated in the first five months of 2019 compared with the first five months of 2018.

Seasonally adjusted insolvencies increased by 16,5% in May 2019 compared with April 2019. This followed month-on-month changes of -19,8% in April 2019 and -10,2% in March 2019 – see Table 6.

Figure 2 – Number of insolvencies



Risenga Maluleke
Statistician-General

Tables

Table 1 – Total liquidations according to industry (number)

Industry	January – June 2019			June 2018			May 2019			June 2019		
	C	V	Total	C	V	Total	C	V	Total	C	V	Total
1.Agriculture, hunting, forestry and fishing	3	6	9	0	1	1	1	1	2	0	3	3
2.Mining and quarrying	1	4	5	1	0	1	0	1	1	0	0	0
3.Manufacturing	4	40	44	0	8	8	1	6	7	2	6	8
4.Electricity, gas and water	0	5	5	0	1	1	0	0	0	0	0	0
5.Construction	8	36	44	1	9	10	1	5	6	2	7	9
6.Trade, catering and accommodation	31	208	239	2	26	28	7	46	53	6	28	34
7.Transport, storage, communication	2	15	17	0	5	5	0	4	4	0	2	2
8.Financing, insurance, real estate, business services	42	284	326	4	43	47	12	55	67	8	48	56
9.Community, social, personal services	9	57	66	0	13	13	3	14	17	0	6	6
10.Unclassified	31	229	260	3	37	40	6	53	59	6	39	45
Total number of liquidations	131	884	1 015	11	143	154	31	185	216	24	139	163

Table 1.1 – Liquidations of companies according to industry (number)

Industry	January – June 2019			June 2018			May 2019			June 2019		
	C	V	Total	C	V	Total	C	V	Total	C	V	Total
1.Agriculture, hunting, forestry and fishing	0	1	1	0	0	0	0	0	0	0	1	1
2.Mining and quarrying	0	3	3	1	0	1	0	0	0	0	0	0
3.Manufacturing	4	14	18	0	3	3	1	4	5	2	3	5
4.Electricity, gas and water	0	0	0	0	0	0	0	0	0	0	0	0
5.Construction	1	8	9	0	4	4	0	1	1	0	0	0
6.Trade, catering and accommodation	12	80	92	0	7	7	5	14	19	2	11	13
7.Transport, storage, communication	1	6	7	0	3	3	0	1	1	0	0	0
8.Financing, insurance, real estate, business services	24	148	172	4	20	24	7	31	38	4	24	28
9.Community, social, personal services	1	9	10	0	1	1	1	2	3	0	0	0
10.Unclassified	25	189	214	3	28	31	5	42	47	5	33	38
Total number of liquidations	68	458	526	8	66	74	19	95	114	13	72	85

Table 1.2 – Liquidations of close corporations according to industry (number)

Industry	January – June 2019			June 2018			May 2019			June 2019		
	C	V	Total	C	V	Total	C	V	Total	C	V	Total
1.Agriculture, hunting, forestry and fishing	3	5	8	0	1	1	1	1	2	0	2	2
2.Mining and quarrying	1	1	2	0	0	0	0	1	1	0	0	0
3.Manufacturing	0	26	26	0	5	5	0	2	2	0	3	3
4.Electricity, gas and water	0	5	5	0	1	1	0	0	0	0	0	0
5.Construction	7	28	35	1	5	6	1	4	5	2	7	9
6.Trade, catering and accommodation	19	128	147	2	19	21	2	32	34	4	17	21
7.Transport, storage, communication	1	9	10	0	2	2	0	3	3	0	2	2
8.Financing, insurance, real estate, business services	18	136	154	0	23	23	5	24	29	4	24	28
9.Community, social, personal services	8	48	56	0	12	12	2	12	14	0	6	6
10.Unclassified	6	40	46	0	9	9	1	11	12	1	6	7
Total number of liquidations	63	426	489	3	77	80	12	90	102	11	67	78

C = Compulsory.

V = Voluntary.

Table 2 – Total liquidations (number)

Month	2013	2014	2015	2016	2017	2018	2019
January	245	132	136	135	91	101	139
February	271	171	158	193	146	167	146
March	285	206	208	161	188	197	178
April	240	149	155	141	150	113	173
May	130	221	179	177	124	175	216
June	193	199	158	122	154	154	163
July	194	213	190	185	128	147	
August	203	162	177	181	179	155	
September	152	151	149	172	161	159	
October	191	168	195	184	194	196	
November	127	169	138	160	216	140	
December	143	123	119	123	137	141	
Total	2 374	2 064	1 962	1 934	1 868	1 845	

Table 2.1 – Compulsory liquidations (number)

Month	2013	2014	2015	2016	2017	2018	2019
January	3	22	13	16	6	11	17
February	26	12	22	13	13	26	14
March	53	18	39	14	14	15	10
April	17	35	7	24	4	16	35
May	9	29	20	14	15	8	31
June	16	89	29	10	17	11	24
July	18	47	34	25	10	17	
August	19	25	23	9	21	23	
September	13	20	15	29	45	39	
October	9	33	14	20	32	17	
November	4	23	12	14	23	9	
December	24	13	10	12	11	7	
Total	211	366	238	200	211	199	

Table 2.2 – Voluntary liquidations (number)

Month	2013	2014	2015	2016	2017	2018	2019
January	242	110	123	119	85	90	122
February	245	159	136	180	133	141	132
March	232	188	169	147	174	182	168
April	223	114	148	117	146	97	138
May	121	192	159	163	109	167	185
June	177	110	129	112	137	143	139
July	176	166	156	160	118	130	
August	184	137	154	172	158	132	
September	139	131	134	143	116	120	
October	182	135	181	164	162	179	
November	123	146	126	146	193	131	
December	119	110	109	111	126	134	
Total	2 163	1 698	1 724	1 734	1 657	1 646	

Table 3 – Total liquidations of companies (number)

Month	2013	2014	2015	2016	2017	2018	2019
January	121	74	79	66	42	67	64
February	123	87	80	100	81	94	78
March	147	89	101	78	80	92	96
April	104	78	70	80	73	64	89
May	56	108	87	96	56	109	114
June	96	104	90	65	84	74	85
July	92	109	93	108	62	77	
August	97	86	87	97	94	68	
September	82	75	79	85	85	65	
October	100	78	88	98	106	102	
November	55	75	59	72	107	71	
December	75	65	56	67	88	89	
Total	1 148	1 028	969	1 012	958	972	

Table 3.1 – Compulsory liquidations of companies (number)

Month	2013	2014	2015	2016	2017	2018	2019
January	3	16	9	9	3	5	8
February	5	7	16	9	12	22	7
March	32	6	18	6	6	5	5
April	10	24	5	17	3	14	16
May	7	20	16	9	5	5	19
June	11	54	22	4	11	8	13
July	9	26	21	9	4	9	
August	11	20	12	6	14	15	
September	9	13	3	17	25	22	
October	4	22	8	13	23	11	
November	2	6	7	6	9	8	
December	14	8	3	8	8	4	
Total	117	222	140	113	123	128	

Table 3.2 – Voluntary liquidations of companies (number)

Month	2013	2014	2015	2016	2017	2018	2019
January	118	58	70	57	39	62	56
February	118	80	64	91	69	72	71
March	115	83	83	72	74	87	91
April	94	54	65	63	70	50	73
May	49	88	71	87	51	104	95
June	85	50	68	61	73	66	72
July	83	83	72	99	58	68	
August	86	66	75	91	80	53	
September	73	62	76	68	60	43	
October	96	56	80	85	83	91	
November	53	69	52	66	98	63	
December	61	57	53	59	80	85	
Total	1 031	806	829	899	835	844	

Table 4 – Total liquidations of close corporations (number)

Month	2013	2014	2015	2016	2017	2018	2019
January	124	58	57	69	49	34	75
February	148	84	78	93	65	73	68
March	138	117	107	83	108	105	82
April	136	71	85	61	77	49	84
May	74	113	92	81	68	66	102
June	97	95	68	57	70	80	78
July	102	104	97	77	66	70	
August	106	76	90	84	85	87	
September	70	76	70	87	76	94	
October	91	90	107	86	88	94	
November	72	94	79	88	109	69	
December	68	58	63	56	49	52	
Total	1 226	1 036	993	922	910	873	

Table 4.1 – Compulsory liquidations of close corporations (number)

Month	2013	2014	2015	2016	2017	2018	2019
January	0	6	4	7	3	6	9
February	21	5	6	4	1	4	7
March	21	12	21	8	8	10	5
April	7	11	2	7	1	2	19
May	2	9	4	5	10	3	12
June	5	35	7	6	6	3	11
July	9	21	13	16	6	8	
August	8	5	11	3	7	8	
September	4	7	12	12	20	17	
October	5	11	6	7	9	6	
November	2	17	5	8	14	1	
December	10	5	7	4	3	3	
Total	94	144	98	87	88	71	

Table 4.2 – Voluntary liquidations of close corporations (number)

Month	2013	2014	2015	2016	2017	2018	2019
January	124	52	53	62	46	28	66
February	127	79	72	89	64	69	61
March	117	105	86	75	100	95	77
April	129	60	83	54	76	47	65
May	72	104	88	76	58	63	90
June	92	60	61	51	64	77	67
July	93	83	84	61	60	62	
August	98	71	79	81	78	79	
September	66	69	58	75	56	77	
October	86	79	101	79	79	88	
November	70	77	74	80	95	68	
December	58	53	56	52	46	49	
Total	1 132	892	895	835	822	802	

Table 5 – Insolvencies of individuals and partnerships (number)

Month	1/ 2013	1/ 2014	1/ 2015	1/ 2016	1/ 2017	1/ 2018	1/ 2019
January	164	187	168	180	156	138	166
February	269	281	254	244	213	168	237
March	339	323	293	297	225	176	229
April	241	256	220	233	180	171	141
May	316	277	230	237	206	194	203
June	291	267	249	228	270	188	
July	304	294	214	219	249	192	
August	349	333	221	233	290	260	
September	243	261	203	210	262	200	
October	264	286	244	219	249	308	
November	276	258	212	208	235	297	
December	196	211	226	176	112	198	
Total	3 252	3 234	2 734	2 684	2 647	2 490	

1/ Preliminary.

Table 6 – Seasonally adjusted number of insolvencies

Month	Number				Month-on-month % change			
	2016	2017	2018	2019	2016	2017	2018	2019
January	266	215	186	215	2,3	2,9	34,8	-12,2
February	243	213	168	236	-8,6	-0,9	-9,7	9,8
March	262	181	171	212	7,8	-15,0	1,8	-10,2
April	249	219	182	170	-5,0	21,0	6,4	-19,8
May	236	206	190	198	-5,2	-5,9	4,4	16,5
June	208	251	192		-11,9	21,8	1,1	
July	225	258	191		8,2	2,8	-0,5	
August	200	243	215		-11,1	-5,8	12,6	
September	209	282	215		4,5	16,0	0,0	
October	205	215	257		-1,9	-23,8	19,5	
November	192	203	255		-6,3	-5,6	-0,8	
December	209	138	245		8,9	-32,0	-3,9	

Explanatory notes

- Introduction**
- 1 Statistics South Africa (Stats SA) collects administrative information on liquidations from Companies and Intellectual Property Commission, Department of Trade and Industry, while information on insolvencies is gathered from Notices of the Master of the High Court that appear in the Government Gazette.
 - 2 This statistical release reflects voluntary and compulsory liquidations of companies and close corporations and insolvencies of individuals and partnerships.
- Purpose of the survey**
- 3 The aggregated data in this release are used by the private and public sectors to measure economic performance and are also an important indicator of the scope of unpaid debt in South Africa.
 - 4 Due to insolvencies figures being available late, the data on insolvencies are published a month later than liquidations.
- Scope of the survey**
- 5 This survey covers the total number of:
 - companies and close corporations which were liquidated; and
 - individuals and partnerships placed under final sequestration.
- Symbols and abbreviations**
- 6 Stats SA – Statistics South Africa
- Seasonal adjustment**
- 7 Seasonally adjusted estimates are generated each month using the X-12-ARIMA Seasonal Adjustment Program developed by the US Bureau of the Census, 1968. Seasonal adjustment is a means of removing the estimated effects of normal seasonal variation from the series so that the effects of other influences on the series can be recognised more clearly. Seasonal adjustment does not aim to remove irregular or non-seasonal influences which may be present in any particular month.
 - 8 Influences that are volatile or unsystematic can still make it difficult to interpret the movement of the series even after adjustment for seasonal variations. This means the month-to-month movements of seasonally adjusted estimates may not be reliable indicators of trend behaviour. The X-12-ARIMA procedure for liquidations and insolvencies is described in more detail on the Stats SA website:
[click to download seasonal adjustment P0043 April 2018](#)
- Trend cycle**
- 9 The trend is the long-term pattern or movement of a time series. The X-12- ARIMA Seasonal Adjustment Program is used for smoothing seasonally adjusted estimates to estimate the underlying trend cycle.

Glossary

- Compulsory liquidation** A compulsory liquidation takes place when the affairs of a company or close corporation are wound up by order of the court.
- Insolvency** Insolvency refers to an individual or partnership which is unable to pay its debt and is placed under final sequestration. The number of insolvencies does not refer to the number of persons involved, as a partnership which is unable to pay its debt is regarded as one insolvency, irrespective of the number of partners.
- Liquidation** Liquidation refers to the winding-up of the affairs of a company or close corporation when liabilities exceed assets and it can be resolved by voluntary action or by an order of the court.
- Voluntary liquidation** A voluntary liquidation takes place when a company or close corporation, by own choice, resolves to wind-up its affairs.

Technical enquiries

Onica Mushwana Telephone number: (012) 310 4897
Email: onicama@statssa.gov.za

JP Terblanche Telephone number: (012) 310 2965
Email: juan-pierret@statssa.gov.za

General information

Stats SA publishes approximately 300 different statistical releases each year. It is not economically viable to produce them in more than one of South Africa's eleven official languages. Since the releases are used extensively, not only locally but also by international economic and social-scientific communities, Stats SA releases are published in English only.

Stats SA has copyright on this publication. Users may apply the information as they wish, provided that they acknowledge Stats SA as the source of the basic data wherever they process, apply, utilise, publish or distribute the data; and also that they specify that the relevant application and analysis (where applicable) result from their own processing of the data.

Stats SA products

A complete set of Stats SA publications is available at the Stats SA library and the following libraries:

National Library of South Africa, Pretoria Division
National Library of South Africa, Cape Town Division
Natal Society Library, Pietermaritzburg
Library of Parliament, Cape Town
Bloemfontein Public Library
Johannesburg Public Library
Eastern Cape Library Services, King William's Town
Central Regional Library, Polokwane
Central Reference Library, Mbombela
Central Reference Collection, Kimberley
Central Reference Library, Mmabatho

Stats SA also provides a subscription service.

Electronic services

A large range of data is available via online services. For more detail about our electronic services, contact Stats SA's user information service at (012) 310 8600.

You can visit us on the Internet at: www.statssa.gov.za

General enquiries

User information services Telephone number: (012) 310 8600
Email address: info@statssa.gov.za

Postal address Private Bag X44, Pretoria, 0001

Produced by Stats SA