

STATISTICAL RELEASE
P0043

Statistics of liquidations and insolvencies
(Preliminary)

July 2018

Embargoed until:
27 August 2018
14:30

ENQUIRIES:
Juan-Pierre Terblanche
012 310 2965

FORTHCOMING ISSUE:
August 2018

EXPECTED RELEASE DATE:
25 September 2018

www.statssa.gov.za
info@statssa.gov.za
T +27 12 310 8911
F +27 12 310 8500

Private Bag X44, Pretoria, 0001, South Africa
ISibalo House, Koch Street, Salvokop, Pretoria, 0002

Contents

Liquidations: results for July 2018	2
Table A – Number of liquidations.....	2
Figure 1 – Number of liquidations.....	2
Insolvencies: results for June 2018.....	3
Table B – Number of insolvencies	3
Figure 2 – Number of insolvencies	3
Tables.....	4
Table 1 – Total liquidations according to industry (number).....	4
Table 1.1 – Liquidations of companies according to industry (number).....	4
Table 1.2 – Liquidations of close corporations according to industry (number)	4
Table 2 – Total liquidations (number)	5
Table 2.1 – Compulsory liquidations (number).....	5
Table 2.2 – Voluntary liquidations (number).....	5
Table 3 – Total liquidations of companies (number).....	6
Table 3.1 – Compulsory liquidations of companies (number)	6
Table 3.2 – Voluntary liquidations of companies (number)	6
Table 4 – Total liquidations of close corporations (number).....	7
Table 4.1 – Compulsory liquidations of close corporations (number)	7
Table 4.2 – Voluntary liquidations of close corporations (number)	7
Table 5 – Insolvencies of individuals and partnerships (number)	8
Table 6 – Seasonally adjusted number of insolvencies	8
Explanatory notes.....	9
Glossary.....	9
Technical enquiries	10
General information.....	10

Liquidations: results for July 2018

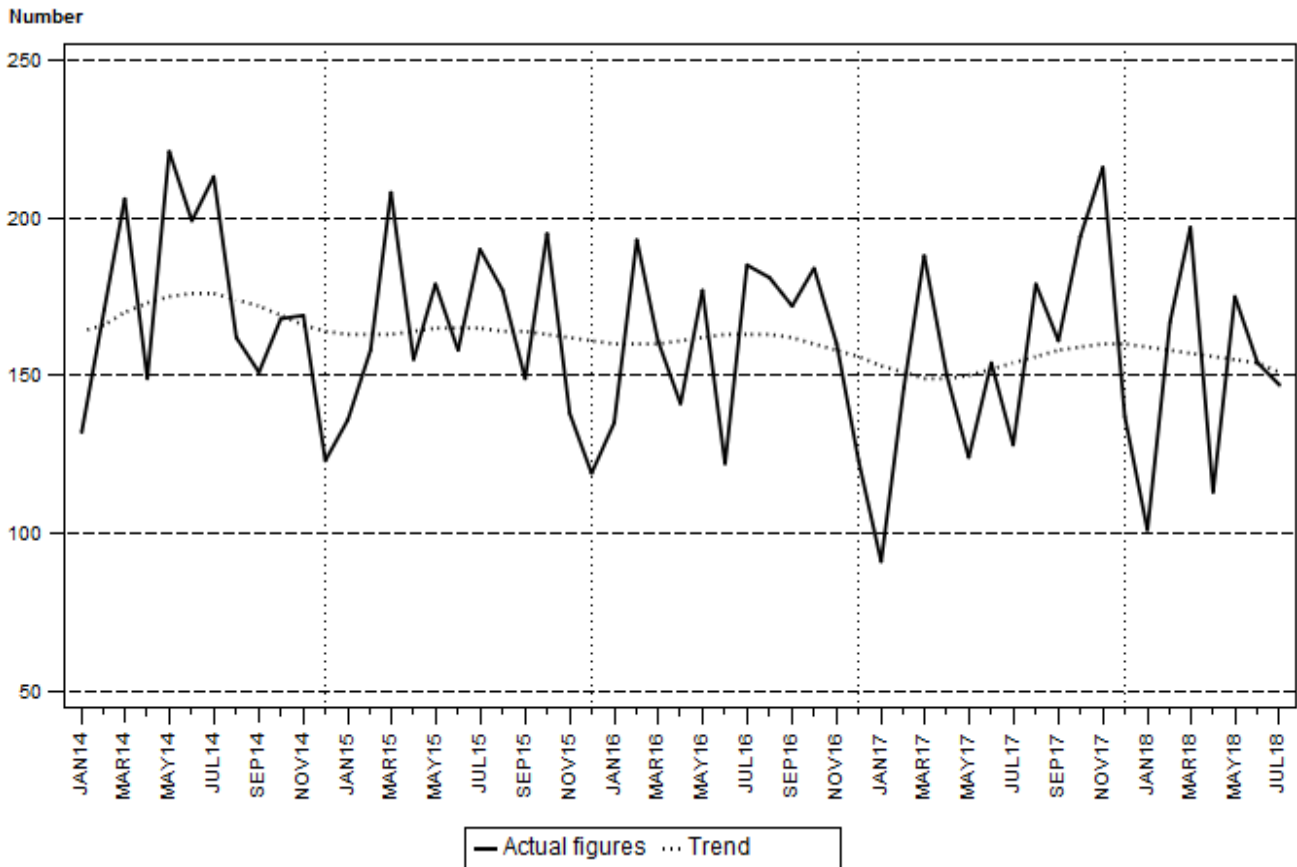
Table A – Number of liquidations

Number of liquidations July 2018	% change between July 2017 and July 2018	% change between May to July 2017 and May to July 2018	% change between January to July 2017 and January to July 2018
147	14,8	17,2	7,4

The total number of liquidations showed a year-on-year increase of 14,8% in July 2018. Compulsory liquidations increased by 7 cases and voluntary liquidations increased by 12 cases.

The number of liquidations in the three months ended July 2018 increased by 17,2% compared with the three months ended July 2017. There was an increase of 7,4% in the first seven months of 2018 compared with the first seven months of 2017.

Figure 1 – Number of liquidations



Insolvencies: results for June 2018

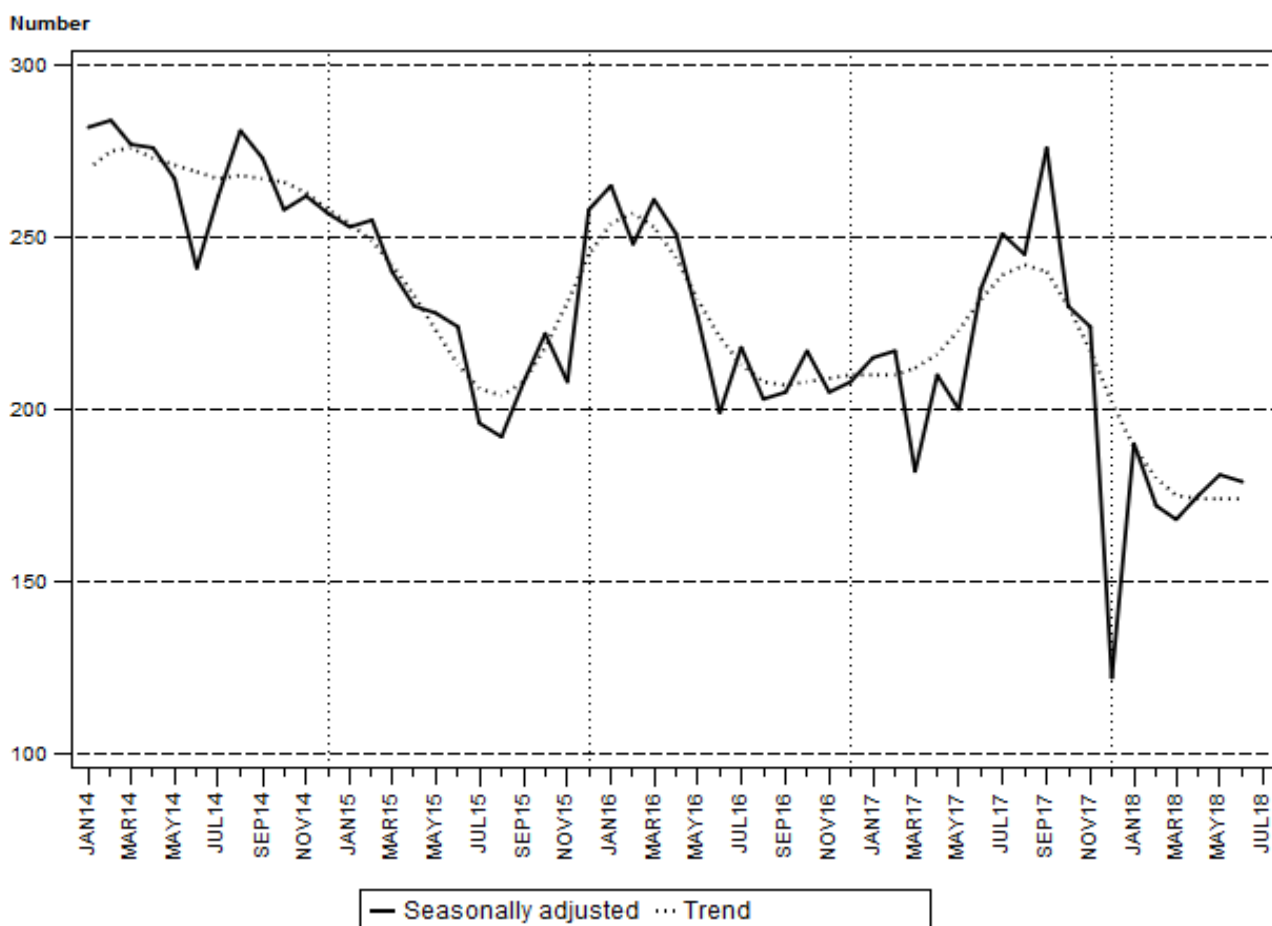
Table B – Number of insolvencies

Number of insolvencies June 2018	% change between June 2017 and June 2018	% change between April to June 2017 and April to June 2018	% change between January to June 2017 and January to June 2018
188	-30,4	-15,7	-17,2

The estimated number of insolvencies decreased by 30,4% year-on-year in June 2018. A 15,7% decrease was estimated between the second quarter of 2017 and the second quarter of 2018. There was a decrease of 17,2% in the first six months of 2018 compared with the first six months of 2017.

Seasonally adjusted insolvencies decreased by 1,1% in June 2018 compared with May 2018. This followed month-on-month changes of 3,4% in May 2018 and 4,2% in April 2018 – see Table 6.

Figure 2 – Number of insolvencies



Risenga Maluleke
Statistician-General

Tables

Table 1 – Total liquidations according to industry (number)

Industry	January – July 2018			July 2017			June 2018			July 2018			
	C	V	Total	C	V	Total	C	V	Total	C	V	Total	
1.Agriculture, hunting, forestry and fishing	3	6	9	0	0	0	0	1	1	1	1	1	2
2.Mining and quarrying	3	4	7	0	1	1	1	0	1	0	0	0	0
3.Manufacturing	3	39	42	0	5	5	0	8	8	0	3	3	3
4.Electricity, gas and water	0	5	5	0	0	0	0	1	1	0	2	2	2
5.Construction	5	40	45	2	7	9	1	9	10	1	6	7	7
6.Trade, catering and accommodation	19	190	209	4	30	34	2	26	28	3	28	31	31
7.Transport, storage, communication	1	29	30	0	1	1	0	5	5	0	4	4	4
8.Financing, insurance, real estate, business services	46	312	358	1	39	40	4	43	47	6	47	53	53
9.Community, social, personal services	4	79	83	1	12	13	0	13	13	0	8	8	8
10.Unclassified	20	246	266	2	23	25	3	37	40	6	31	37	37
Total number of liquidations	104	950	1 054	10	118	128	11	143	154	17	130	147	147

Table 1.1 – Liquidations of companies according to industry (number)

Industry	January – July 2018			July 2017			June 2018			July 2018			
	C	V	Total	C	V	Total	C	V	Total	C	V	Total	
1.Agriculture, hunting, forestry and fishing	2	2	4	0	0	0	0	0	0	0	0	0	0
2.Mining and quarrying	2	4	6	0	1	1	1	0	1	0	0	0	0
3.Manufacturing	3	15	18	0	2	2	0	3	3	0	1	1	1
4.Electricity, gas and water	0	0	0	0	0	0	0	0	0	0	0	0	0
5.Construction	3	13	16	0	2	2	0	4	4	0	0	0	0
6.Trade, catering and accommodation	10	73	83	2	16	18	0	7	7	0	13	13	13
7.Transport, storage, communication	0	12	12	0	0	0	0	3	3	0	1	1	1
8.Financing, insurance, real estate, business services	29	175	204	0	20	20	4	20	24	4	28	32	32
9.Community, social, personal services	1	15	16	0	0	0	0	1	1	0	1	1	1
10.Unclassified	18	200	218	2	17	19	3	28	31	5	24	29	29
Total number of liquidations	68	509	577	4	58	62	8	66	74	9	68	77	77

Table 1.2 – Liquidations of close corporations according to industry (number)

Industry	January – July 2018			July 2017			June 2018			July 2018			
	C	V	Total	C	V	Total	C	V	Total	C	V	Total	
1.Agriculture, hunting, forestry and fishing	1	4	5	0	0	0	0	1	1	1	1	1	2
2.Mining and quarrying	1	0	1	0	0	0	0	0	0	0	0	0	0
3.Manufacturing	0	24	24	0	3	3	0	5	5	0	2	2	2
4.Electricity, gas and water	0	5	5	0	0	0	0	1	1	0	2	2	2
5.Construction	2	27	29	2	5	7	1	5	6	1	6	7	7
6.Trade, catering and accommodation	9	117	126	2	14	16	2	19	21	3	15	18	18
7.Transport, storage, communication	1	17	18	0	1	1	0	2	2	0	3	3	3
8.Financing, insurance, real estate, business services	17	137	154	1	19	20	0	23	23	2	19	21	21
9.Community, social, personal services	3	64	67	1	12	13	0	12	12	0	7	7	7
10.Unclassified	2	46	48	0	6	6	0	9	9	1	7	8	8
Total number of liquidations	36	441	477	6	60	66	3	77	80	8	62	70	70

C = Compulsory.

V = Voluntary.

Table 2 – Total liquidations (number)

Month	2012	2013	2014	2015	2016	2017	2018
January	200	245	132	136	135	91	101
February	200	271	171	158	193	146	167
March	312	285	206	208	161	188	197
April	274	240	149	155	141	150	113
May	269	130	221	179	177	124	175
June	213	193	199	158	122	154	154
July	147	194	213	190	185	128	147
August	241	203	162	177	181	179	
September	236	152	151	149	172	161	
October	235	191	168	195	184	194	
November	195	127	169	138	160	216	
December	194	143	123	119	123	137	
Total	2 716	2 374	2 064	1 962	1 934	1 868	

Table 2.1 – Compulsory liquidations (number)

Month	2012	2013	2014	2015	2016	2017	2018
January	61	3	22	13	16	6	11
February	27	26	12	22	13	13	26
March	39	53	18	39	14	14	15
April	4	17	35	7	24	4	16
May	3	9	29	20	14	15	8
June	14	16	89	29	10	17	11
July	1	18	47	34	25	10	17
August	63	19	25	23	9	21	
September	58	13	20	15	29	45	
October	21	9	33	14	20	32	
November	18	4	23	12	14	23	
December	8	24	13	10	12	11	
Total	317	211	366	238	200	211	

Table 2.2 – Voluntary liquidations (number)

Month	2012	2013	2014	2015	2016	2017	2018
January	139	242	110	123	119	85	90
February	173	245	159	136	180	133	141
March	273	232	188	169	147	174	182
April	270	223	114	148	117	146	97
May	266	121	192	159	163	109	167
June	199	177	110	129	112	137	143
July	146	176	166	156	160	118	130
August	178	184	137	154	172	158	
September	178	139	131	134	143	116	
October	214	182	135	181	164	162	
November	177	123	146	126	146	193	
December	186	119	110	109	111	126	
Total	2 399	2 163	1 698	1 724	1 734	1 657	

Table 3 – Total liquidations of companies (number)

Month	2012	2013	2014	2015	2016	2017	2018
January	97	121	74	79	66	42	67
February	75	123	87	80	100	81	94
March	115	147	89	101	78	80	92
April	105	104	78	70	80	73	64
May	130	56	108	87	96	56	109
June	105	96	104	90	65	84	74
July	74	92	109	93	108	62	77
August	133	97	86	87	97	94	
September	136	82	75	79	85	85	
October	109	100	78	88	98	106	
November	72	55	75	59	72	107	
December	108	75	65	56	67	88	
Total	1 259	1 148	1 028	969	1 012	958	

Table 3.1 – Compulsory liquidations of companies (number)

Month	2012	2013	2014	2015	2016	2017	2018
January	37	3	16	9	9	3	5
February	11	5	7	16	9	12	22
March	11	32	6	18	6	6	5
April	2	10	24	5	17	3	14
May	3	7	20	16	9	5	5
June	14	11	54	22	4	11	8
July	0	9	26	21	9	4	9
August	34	11	20	12	6	14	
September	41	9	13	3	17	25	
October	14	4	22	8	13	23	
November	6	2	6	7	6	9	
December	2	14	8	3	8	8	
Total	175	117	222	140	113	123	

Table 3.2 – Voluntary liquidations of companies (number)

Month	2012	2013	2014	2015	2016	2017	2018
January	60	118	58	70	57	39	62
February	64	118	80	64	91	69	72
March	104	115	83	83	72	74	87
April	103	94	54	65	63	70	50
May	127	49	88	71	87	51	104
June	91	85	50	68	61	73	66
July	74	83	83	72	99	58	68
August	99	86	66	75	91	80	
September	95	73	62	76	68	60	
October	95	96	56	80	85	83	
November	66	53	69	52	66	98	
December	106	61	57	53	59	80	
Total	1 084	1 031	806	829	899	835	

Table 4 – Total liquidations of close corporations (number)

Month	2012	2013	2014	2015	2016	2017	2018
January	103	124	58	57	69	49	34
February	125	148	84	78	93	65	73
March	197	138	117	107	83	108	105
April	169	136	71	85	61	77	49
May	139	74	113	92	81	68	66
June	108	97	95	68	57	70	80
July	73	102	104	97	77	66	70
August	108	106	76	90	84	85	
September	100	70	76	70	87	76	
October	126	91	90	107	86	88	
November	123	72	94	79	88	109	
December	86	68	58	63	56	49	
Total	1 457	1 226	1 036	993	922	910	

Table 4.1 – Compulsory liquidations of close corporations (number)

Month	2012	2013	2014	2015	2016	2017	2018
January	24	0	6	4	7	3	6
February	16	21	5	6	4	1	4
March	28	21	12	21	8	8	10
April	2	7	11	2	7	1	2
May	0	2	9	4	5	10	3
June	0	5	35	7	6	6	3
July	1	9	21	13	16	6	8
August	29	8	5	11	3	7	
September	17	4	7	12	12	20	
October	7	5	11	6	7	9	
November	12	2	17	5	8	14	
December	6	10	5	7	4	3	
Total	142	94	144	98	87	88	

Table 4.2 – Voluntary liquidations of close corporations (number)

Month	2012	2013	2014	2015	2016	2017	2018
January	79	124	52	53	62	46	28
February	109	127	79	72	89	64	69
March	169	117	105	86	75	100	95
April	167	129	60	83	54	76	47
May	139	72	104	88	76	58	63
June	108	92	60	61	51	64	77
July	72	93	83	84	61	60	62
August	79	98	71	79	81	78	
September	83	66	69	58	75	56	
October	119	86	79	101	79	79	
November	111	70	77	74	80	95	
December	80	58	53	56	52	46	
Total	1 315	1 132	892	895	835	822	

Table 5 – Insolvencies of individuals and partnerships (number)

Month	1/ 2012	1/ 2013	1/ 2014	1/ 2015	1/ 2016	1/ 2017	1/ 2018
January	292	164	187	168	180	156	138
February	409	269	281	254	244	213	168
March	468	339	323	293	297	225	176
April	349	241	250	216	233	180	171
May	366	314	276	230	237	206	194
June	346	291	267	243	228	270	188
July	329	304	285	214	219	249	
August	408	349	330	216	233	290	
September	276	243	261	203	210	262	
October	298	264	280	229	219	249	
November	308	272	258	212	208	235	
December	205	196	211	226	176	102	
Total	4 054	3 246	3 209	2 704	2 684	2 637	

1/ Preliminary.

Table 6 – Seasonally adjusted number of insolvencies

Month	Number				Month-on-month % change			
	2015	2016	2017	2018	2015	2016	2017	2018
January	253	265	215	190	-1,6	2,7	3,4	55,7
February	255	248	217	172	0,8	-6,4	0,9	-9,5
March	240	261	182	168	-5,9	5,2	-16,1	-2,3
April	230	251	210	175	-4,2	-3,8	15,4	4,2
May	228	227	200	181	-0,9	-9,6	-4,8	3,4
June	224	199	235	179	-1,8	-12,3	17,5	-1,1
July	196	218	251		-12,5	9,5	6,8	
August	192	203	245		-2,0	-6,9	-2,4	
September	208	205	276		8,3	1,0	12,7	
October	222	217	230		6,7	5,9	-16,7	
November	208	205	224		-6,3	-5,5	-2,6	
December	258	208	122		24,0	1,5	-45,5	

Explanatory notes

- Introduction**
- 1 Statistics South Africa (Stats SA) collects administrative information on liquidations from Companies and Intellectual Property Commission, Department of Trade and Industry, while information on insolvencies is gathered from Notices of the Master of the Supreme Court that appear in the Government Gazette.
 - 2 This statistical release reflects voluntary and compulsory liquidations of companies and close corporations and insolvencies of individuals and partnerships.
- Purpose of the survey**
- 3 The aggregated data in this release are used by the private and public sectors to measure economic performance and are also an important indicator of the scope of unpaid debt in South Africa.
 - 4 Due to insolvencies figures being available late, the data on insolvencies are published a month later than liquidations.
- Scope of the survey**
- 5 This survey covers the total number of:
 - companies and close corporations which were liquidated; and
 - individuals and partnerships placed under final sequestration.
- Symbols and abbreviations**
- 6 Stats SA – Statistics South Africa
- Seasonal adjustment**
- 7 Seasonally adjusted estimates are generated each month using the X-12-ARIMA Seasonal Adjustment Program developed by the US Bureau of the Census, 1968. Seasonal adjustment is a means of removing the estimated effects of normal seasonal variation from the series so that the effects of other influences on the series can be recognised more clearly. Seasonal adjustment does not aim to remove irregular or non-seasonal influences which may be present in any particular month.
 - 8 Influences that are volatile or unsystematic can still make it difficult to interpret the movement of the series even after adjustment for seasonal variations. This means the month-to-month movements of seasonally adjusted estimates may not be reliable indicators of trend behaviour. The X-12-ARIMA procedure for liquidations and insolvencies is described in more detail on the Stats SA website:
[click to download seasonal adjustment P0043 April 2018](#)
- Trend cycle**
- 9 The trend is the long-term pattern or movement of a time series. The X-12- ARIMA Seasonal Adjustment Program is used for smoothing seasonally adjusted estimates to estimate the underlying trend cycle.

Glossary

- Compulsory liquidation** A compulsory liquidation takes place when the affairs of a company or close corporation are wound up by order of the court.
- Insolvency** Insolvency refers to an individual or partnership which is unable to pay its debt and is placed under final sequestration. The number of insolvencies does not refer to the number of persons involved, as a partnership which is unable to pay its debt is regarded as one insolvency, irrespective of the number of partners.
- Liquidation** Liquidation refers to the winding-up of the affairs of a company or close corporation when liabilities exceed assets and it can be resolved by voluntary action or by an order of the court.
- Voluntary liquidation** A voluntary liquidation takes place when a company or close corporation, by own choice, resolves to wind-up its affairs.

Technical enquiries

JP Terblanche Telephone number: (012) 310 2965
Email: juan-pierret@statssa.gov.za

Sinethemba Mhlongo Telephone number: (012) 310 3382
Email: sinethemban@statssa.gov.za

General information

Stats SA publishes approximately 300 different statistical releases each year. It is not economically viable to produce them in more than one of South Africa's eleven official languages. Since the releases are used extensively, not only locally but also by international economic and social-scientific communities, Stats SA releases are published in English only.

Stats SA has copyright on this publication. Users may apply the information as they wish, provided that they acknowledge Stats SA as the source of the basic data wherever they process, apply, utilise, publish or distribute the data; and also that they specify that the relevant application and analysis (where applicable) result from their own processing of the data.

Stats SA products

A complete set of Stats SA publications is available at the Stats SA library and the following libraries:

National Library of South Africa, Pretoria Division
National Library of South Africa, Cape Town Division
Natal Society Library, Pietermaritzburg
Library of Parliament, Cape Town
Bloemfontein Public Library
Johannesburg Public Library
Eastern Cape Library Services, King William's Town
Central Regional Library, Polokwane
Central Reference Library, Mbombela
Central Reference Collection, Kimberley
Central Reference Library, Mmabatho

Stats SA also provides a subscription service.

Electronic services

A large range of data is available via online services. For more detail about our electronic services, contact Stats SA's user information service at (012) 310 8600.

You can visit us on the Internet at: www.statssa.gov.za

General enquiries

User information services Telephone number: (012) 310 8600
Email address: info@statssa.gov.za

Postal address Private Bag X44, Pretoria, 0001

Produced by Stats SA