



**Statistics  
South Africa**



your leading partner in quality statistics

---

# Statistical release

## P0043

# Statistics of liquidations and insolvencies (Preliminary)

**July 2013**

**Embargoed until:  
26 August 2013  
14:30**

**Enquiries:**

---

User Information Services  
Tel: (012) 310 8600

**Forthcoming issue:**

---

August 2013

**Expected release date:**

---

23 September 2013

## Contents

<b>Liquidations: results for July 2013</b> .....	<b>2</b>
Table A – Number of liquidations.....	2
Figure 1 – Number of liquidations.....	2
<b>Insolvencies: results for June 2013</b> .....	<b>3</b>
Table B – Number of insolvencies .....	3
Figure 2 – Number of insolvencies .....	3
<b>Tables</b> .....	<b>4</b>
Table 1 – Total liquidations according to industry (number) .....	4
Table 1.1 – Liquidations of companies according to industry (number) .....	4
Table 1.2 – Liquidations of close corporations according to industry (number) .....	4
Table 2 – Total liquidations (number) .....	5
Table 2.1 – Compulsory liquidations (number).....	5
Table 2.2 – Voluntary liquidations (number).....	5
Table 3 – Total liquidations of companies (number).....	6
Table 3.1 – Compulsory liquidations of companies (number).....	6
Table 3.2 – Voluntary liquidations of companies (number).....	6
Table 4 – Total liquidations of close corporations (number) .....	7
Table 4.1 – Compulsory liquidations of close corporations (number).....	7
Table 4.2 – Voluntary liquidations of close corporations (number).....	7
Table 5 – Insolvencies of individuals and partnerships (number).....	8
<b>Explanatory notes</b> .....	<b>9</b>
<b>Glossary</b> .....	<b>9</b>
<b>General information</b> .....	<b>10</b>

### Liquidations: results for July 2013

**Table A – Number of liquidations**

Number of liquidations July 2013	% change between July 2012 and July 2013	% change between May to July 2012 and May to July 2013	% change between January to July 2012 and January to July 2013
194	32,0	-17,8	-3,5

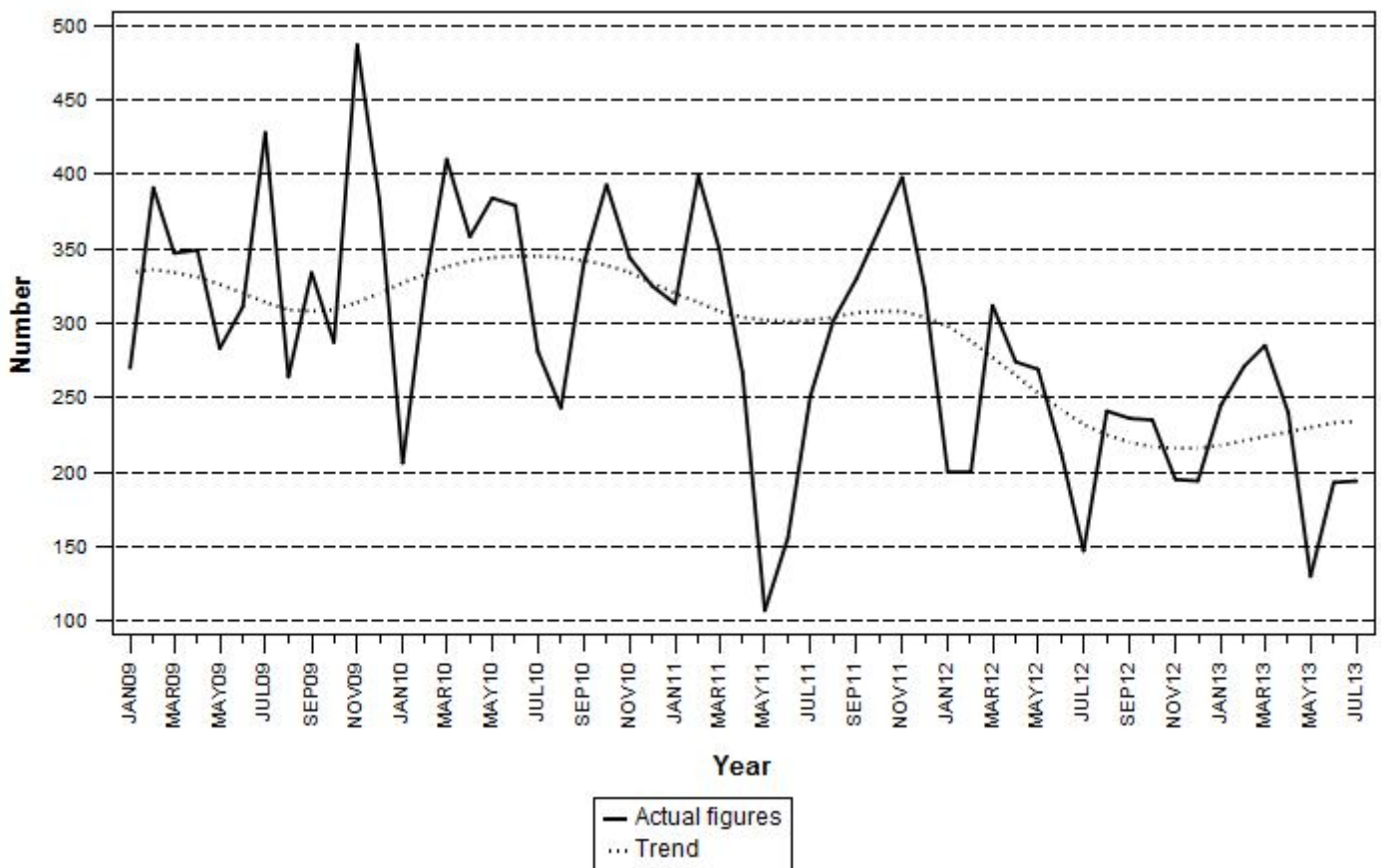
The total number of liquidations increased by 32,0% (from 147 to 194) in July 2013 compared with July 2012. During this period, there were 30 more voluntary liquidations and 17 more compulsory liquidations.

The biggest contributors to the 194 liquidations in July 2013 related to businesses in the following industries:

- financing, insurance, real estate and business services (78 liquidations or 40,2%);
- wholesale and retail trade, catering and accommodation (51 liquidations or 26,3%); and
- community, social and personal services (29 liquidations or 14,9%).

The number of liquidations recorded in the three months ended July 2013 decreased by 17,8% compared with the three months ended July 2012.

**Figure 1 – Number of liquidations**



**Insolvencies: results for June 2013**

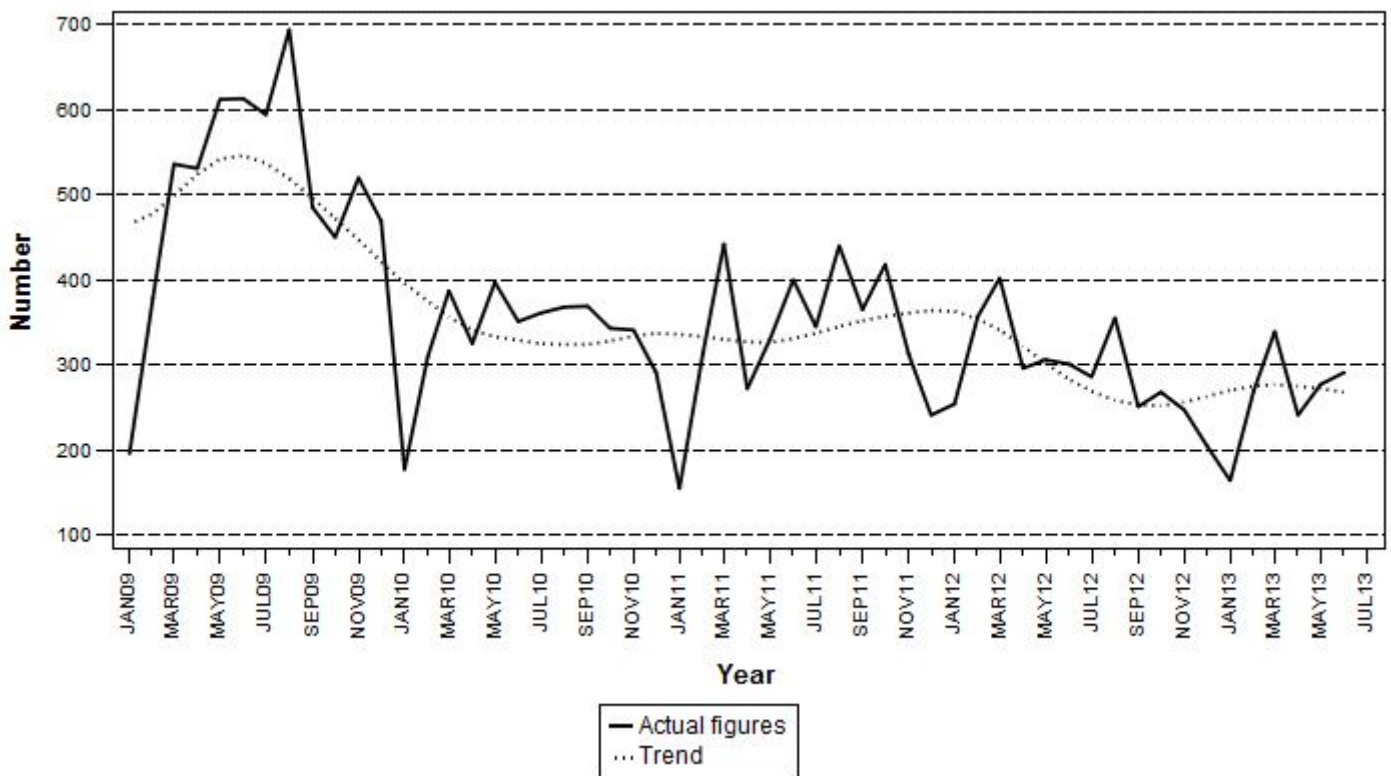
**Table B – Number of insolvencies**

Number of insolvencies June 2013	% change between June 2012 and June 2013	% change between April to June 2012 and April to June 2013	% change between January to June 2012 and January to June 2013
291	-3,3	-10,4	-17,5

The estimated number of insolvencies decreased by 3,3% year-on-year in June 2013. A decrease of 10,4% was recorded in the second quarter of 2013 compared with the same quarter of 2012.

The number of insolvencies decreased by 17,5% in the first six months of 2013 compared with the first six months of 2012.

**Figure 2 – Number of insolvencies**



**PJ Lehohla**  
**Statistician-General**

**Tables**

**Table 1 – Total liquidations according to industry (number)**

Industry	January - July 2013			July 2012			June 2013			July 2013		
	C	V	Total	C	V	Total	C	V	Total	C	V	Total
1.Agriculture, hunting, forestry and fishing	1	11	12	0	2	2	0	2	2	0	3	3
2.Mining and quarrying	7	11	18	0	4	4	2	2	4	0	2	2
3.Manufacturing	12	56	68	0	5	5	1	9	10	1	12	13
4.Electricity, gas and water	0	18	18	0	0	0	0	0	0	0	2	2
5.Construction	5	84	89	1	10	11	0	9	9	1	10	11
6.Wholesale and retail trade, catering and accommodation	29	411	440	0	42	42	5	69	74	4	47	51
7.Transport, storage, communication	10	72	82	0	0	0	0	2	2	1	4	5
8.Financing, insurance, real estate, business services	57	568	625	0	56	56	7	60	67	9	69	78
9.Community, social, personal services	21	185	206	0	27	27	1	24	25	2	27	29
<b>Total number of liquidations</b>	<b>142</b>	<b>1 416</b>	<b>1 558</b>	<b>1</b>	<b>146</b>	<b>147</b>	<b>16</b>	<b>177</b>	<b>193</b>	<b>18</b>	<b>176</b>	<b>194</b>

**Table 1.1 – Liquidations of companies according to industry (number)**

Industry	January - July 2013			July 2012			June 2013			July 2013		
	C	V	Total	C	V	Total	C	V	Total	C	V	Total
1.Agriculture, hunting, forestry and fishing	0	7	7	0	0	0	0	1	1	0	1	1
2.Mining and quarrying	5	9	14	0	4	4	0	2	2	0	2	2
3.Manufacturing	3	33	36	0	1	1	1	6	7	0	5	5
4.Electricity, gas and water	0	1	1	0	0	0	0	0	0	0	0	0
5.Construction	3	27	30	0	0	0	0	3	3	0	3	3
6.Wholesale and retail trade, catering and accommodation	19	188	207	0	25	25	4	26	30	3	18	21
7.Transport, storage, communication	0	22	22	0	0	0	0	1	1	0	3	3
8.Financing, insurance, real estate, business services	33	295	328	0	29	29	5	34	39	5	41	46
9.Community, social, personal services	14	80	94	0	15	15	1	12	13	1	10	11
<b>Total number of liquidations</b>	<b>77</b>	<b>662</b>	<b>739</b>	<b>0</b>	<b>74</b>	<b>74</b>	<b>11</b>	<b>85</b>	<b>96</b>	<b>9</b>	<b>83</b>	<b>92</b>

**Table 1.2 – Liquidations of close corporations according to industry (number)**

Industry	January - July 2013			July 2012			June 2013			July 2013		
	C	V	Total	C	V	Total	C	V	Total	C	V	Total
1.Agriculture, hunting, forestry and fishing	1	4	5	0	2	2	0	1	1	0	2	2
2.Mining and quarrying	2	2	4	0	0	0	2	0	2	0	0	0
3.Manufacturing	9	23	32	0	4	4	0	3	3	1	7	8
4.Electricity, gas and water	0	17	17	0	0	0	0	0	0	0	2	2
5.Construction	2	57	59	1	10	11	0	6	6	1	7	8
6.Wholesale and retail trade, catering and accommodation	10	223	233	0	17	17	1	43	44	1	29	30
7.Transport, storage, communication	10	50	60	0	0	0	0	1	1	1	1	2
8.Financing, insurance, real estate, business services	24	273	297	0	27	27	2	26	28	4	28	32
9.Community, social, personal services	7	105	112	0	12	12	0	12	12	1	17	18
<b>Total number of liquidations</b>	<b>65</b>	<b>754</b>	<b>819</b>	<b>1</b>	<b>72</b>	<b>73</b>	<b>5</b>	<b>92</b>	<b>97</b>	<b>9</b>	<b>93</b>	<b>102</b>

C = Compulsory.

V = Voluntary.

**Table 2 – Total liquidations (number)**

Month	2007	2008	2009	2010	2011	2012	2013
January	176	160	270	206	313	200	245
February	192	230	391	328	399	200	271
March	241	297	347	410	350	312	285
April	236	247	349	358	267	274	240
May	273	265	283	384	107	269	130
June	181	233	311	379	156	213	193
July	272	320	428	281	251	147	194
August	387	285	264	243	302	241	
September	507	328	334	341	330	236	
October	286	348	287	393	363	235	
November	194	240	487	344	398	195	
December	206	347	382	325	323	194	
<b>Total</b>	<b>3 151</b>	<b>3 300</b>	<b>4 133</b>	<b>3 992</b>	<b>3 559</b>	<b>2 716</b>	

**Table 2.1 – Compulsory liquidations (number)**

Month	2007	2008	2009	2010	2011	2012	2013
January	12	29	54	3	45	61	3
February	15	15	26	19	26	27	26
March	12	41	10	23	12	39	53
April	32	22	41	17	16	4	17
May	13	26	26	30	30	3	9
June	9	17	20	12	2	14	16
July	14	13	37	35	8	1	18
August	111	26	49	22	14	63	
September	47	22	2	20	18	58	
October	39	48	17	49	61	21	
November	13	15	12	20	74	18	
December	9	2	1	34	75	8	
<b>Total</b>	<b>326</b>	<b>276</b>	<b>295</b>	<b>284</b>	<b>381</b>	<b>317</b>	

**Table 2.2 – Voluntary liquidations (number)**

Month	2007	2008	2009	2010	2011	2012	2013
January	164	131	216	203	268	139	242
February	177	215	365	309	373	173	245
March	229	256	337	387	338	273	232
April	204	225	308	341	251	270	223
May	260	239	257	354	77	266	121
June	172	216	291	367	154	199	177
July	258	307	391	246	243	146	176
August	276	259	215	221	288	178	
September	460	306	332	321	312	178	
October	247	300	270	344	302	214	
November	181	225	475	324	324	177	
December	197	345	381	291	248	186	
<b>Total</b>	<b>2 825</b>	<b>3 024</b>	<b>3 838</b>	<b>3 708</b>	<b>3 178</b>	<b>2 399</b>	

**Table 3 – Total liquidations of companies (number)**

Month	2007	2008	2009	2010	2011	2012	2013
January	99	87	114	96	156	97	121
February	96	117	229	161	199	75	123
March	114	108	152	177	145	115	147
April	143	104	148	176	97	105	104
May	157	108	109	203	36	130	56
June	104	100	147	194	52	105	96
July	129	170	201	128	81	74	92
August	243	98	100	93	180	133	
September	416	177	162	136	190	136	
October	175	165	136	204	167	109	
November	94	111	161	174	152	72	
December	127	228	230	197	151	108	
<b>Total</b>	<b>1 897</b>	<b>1 573</b>	<b>1 889</b>	<b>1 939</b>	<b>1 606</b>	<b>1 259</b>	

**Table 3.1 – Compulsory liquidations of companies (number)**

Month	2007	2008	2009	2010	2011	2012	2013
January	4	8	18	3	18	37	3
February	4	15	11	12	16	11	5
March	5	10	8	19	12	11	32
April	19	8	27	13	0	2	10
May	3	17	9	24	3	3	7
June	2	6	14	3	1	14	11
July	4	4	20	25	4	0	9
August	89	6	10	11	0	34	
September	34	3	1	3	18	41	
October	26	34	10	38	59	14	
November	7	10	3	15	42	6	
December	8	1	0	30	47	2	
<b>Total</b>	<b>205</b>	<b>122</b>	<b>131</b>	<b>196</b>	<b>220</b>	<b>175</b>	

**Table 3.2 – Voluntary liquidations of companies (number)**

Month	2007	2008	2009	2010	2011	2012	2013
January	95	79	96	93	138	60	118
February	92	102	218	149	183	64	118
March	109	98	144	158	133	104	115
April	124	96	121	163	97	103	94
May	154	91	100	179	33	127	49
June	102	94	133	191	51	91	85
July	125	166	181	103	77	74	83
August	154	92	90	82	180	99	
September	382	174	161	133	172	95	
October	149	131	126	166	108	95	
November	87	101	158	159	110	66	
December	119	227	230	167	104	106	
<b>Total</b>	<b>1 692</b>	<b>1 451</b>	<b>1 758</b>	<b>1 743</b>	<b>1 386</b>	<b>1 084</b>	

**Table 4 – Total liquidations of close corporations (number)**

Month	2007	2008	2009	2010	2011	2012	2013
January	77	73	156	110	157	103	124
February	96	113	162	167	200	125	148
March	127	189	195	233	205	197	138
April	93	143	201	182	170	169	136
May	116	157	174	181	71	139	74
June	77	133	164	185	104	108	97
July	143	150	227	153	170	73	102
August	144	187	164	150	122	108	
September	91	151	172	205	140	100	
October	111	183	151	189	196	126	
November	100	129	326	170	246	123	
December	79	119	152	128	172	86	
<b>Total</b>	<b>1 254</b>	<b>1 727</b>	<b>2 244</b>	<b>2 053</b>	<b>1 953</b>	<b>1 457</b>	

**Table 4.1 – Compulsory liquidations of close corporations (number)**

Month	2007	2008	2009	2010	2011	2012	2013
January	8	21	36	0	27	24	0
February	11	0	15	7	10	16	21
March	7	31	2	4	0	28	21
April	13	14	14	4	16	2	7
May	10	9	17	6	27	0	2
June	7	11	6	9	1	0	5
July	10	9	17	10	4	1	9
August	22	20	39	11	14	29	
September	13	19	1	17	0	17	
October	13	14	7	11	2	7	
November	6	5	9	5	32	12	
December	1	1	1	4	28	6	
<b>Total</b>	<b>121</b>	<b>154</b>	<b>164</b>	<b>88</b>	<b>161</b>	<b>142</b>	

**Table 4.2 – Voluntary liquidations of close corporations (number)**

Month	2007	2008	2009	2010	2011	2012	2013
January	69	52	120	110	130	79	124
February	85	113	147	160	190	109	127
March	120	158	193	229	205	169	117
April	80	129	187	178	154	167	129
May	106	148	157	175	44	139	72
June	70	122	158	176	103	108	92
July	133	141	210	143	166	72	93
August	122	167	125	139	108	79	
September	78	132	171	188	140	83	
October	98	169	144	178	194	119	
November	94	124	317	165	214	111	
December	78	118	151	124	144	80	
<b>Total</b>	<b>1 133</b>	<b>1 573</b>	<b>2 080</b>	<b>1 965</b>	<b>1 792</b>	<b>1 315</b>	



**Table 5 – Insolvencies of individuals and partnerships (number)**

Month	2007	2008	2009	2010	* 2011	1/ 2012	1/ 2013
January	79	118	196	177	155	254	164
February	175	295	378	310	313	357	269
March	173	288	536	387	442	402	339
April	155	396	531	325	272	296	241
May	201	338	612	397	330	306	277
June	163	425	613	351	400	301	291
July	184	473	594	361	345	286	
August	213	502	694	368	440	355	
September	206	459	485	369	365	251	
October	231	589	450	343	418	268	
November	302	453	520	341	313	247	
December	232	427	469	291	241	205	
<b>Total</b>	<b>2 314</b>	<b>4 763</b>	<b>6 078</b>	<b>4 020</b>	<b>4 034</b>	<b>3 528</b>	

\* Revised.

1/ Preliminary.

**Explanatory notes**

- |                                  |          |   |
|----------------------------------|----------|---|
| <b>Introduction</b>              | <b>1</b> | Statistics South Africa (Stats SA) collects administrative information on liquidations from the Registrar of Companies and Close Corporations, Department of Trade and Industry, while information on insolvencies is gathered from Notices of the Master of the Supreme Court that appear in the Government Gazette. |
|                                  | <b>2</b> | This statistical release reflects voluntary and compulsory liquidations of companies and close corporations and insolvencies of individuals and partnerships.   |
| <b>Purpose of the survey</b>     | <b>3</b> | The aggregated data in this release are used by the private and public sectors to measure economic performance and are also an important indicator of the scope of unpaid debt in South Africa.   |
|                                  | <b>4</b> | Due to insolvencies figures being available late, the data on insolvencies are published a month later than liquidations.   |
| <b>Scope of the survey</b>       | <b>5</b> | This survey covers the total number of: <ul style="list-style-type: none"> <li>• companies and close corporations which were liquidated; and</li> <li>• individuals and partnerships placed under final sequestration.</li> </ul>   |
| <b>Related publications</b>      | <b>6</b> | Users may also wish to refer to the following publications which are available from Stats SA: <ul style="list-style-type: none"> <li>• <i>Bulletin of Statistics; and</i></li> <li>• <i>SA Statistics.</i></li> </ul>   |
| <b>Symbols and abbreviations</b> | <b>7</b> | Stats SA – Statistics South Africa  |

**Glossary**

- |                               |   |
|-------------------------------|---|
| <b>Compulsory liquidation</b> | A compulsory liquidation takes place when the affairs of a company or close corporation are wound up by order of the court.   |
| <b>Insolvency</b>             | Insolvency refers to an individual or partnership which is unable to pay its debt and is placed under final sequestration. The number of insolvencies does not refer to the number of persons involved, as a partnership which is unable to pay its debt is regarded as one insolvency, irrespective of the number of partners. |
| <b>Liquidation</b>            | Liquidation refers to the winding-up of the affairs of a company or close corporation when liabilities exceed assets and it can be resolved by voluntary action or by an order of the court.  |
| <b>Voluntary liquidation</b>  | A voluntary liquidation takes place when a company or close corporation, by own choice, resolves to wind-up its affairs.  |

## General information

Stats SA publishes approximately 300 different statistical releases each year. It is not economically viable to produce them in more than one of South Africa's eleven official languages. Since the releases are used extensively, not only locally but also by international economic and social-scientific communities, Stats SA releases are published in English only.

Stats SA has copyright on this publication. Users may apply the information as they wish, provided that they acknowledge Stats SA as the source of the basic data wherever they process, apply, utilise, publish or distribute the data; and also that they specify that the relevant application and analysis (where applicable) result from their own processing of the data.

## Stats SA products

A complete set of Stats SA publications is available at the Stats SA library and the following libraries:

National Library of South Africa, Pretoria Division  
National Library of South Africa, Cape Town Division  
Natal Society Library, Pietermaritzburg  
Library of Parliament, Cape Town  
Bloemfontein Public Library  
Johannesburg Public Library  
Eastern Cape Library Services, King William's Town  
Central Regional Library, Polokwane  
Central Reference Library, Mbombela  
Central Reference Collection, Kimberley  
Central Reference Library, Mmabatho

Stats SA also provides a subscription service.

## Electronic services

A large range of data is available via online services. For more detail about our electronic services, contact Stats SA's user information service at (012) 310 8600.

You can visit us on the Internet at: [www.statssa.gov.za](http://www.statssa.gov.za)

## Enquiries

Telephone number: (012) 310 4897 (technical enquiries)  
(012) 310 8600 (user information services)  
(012) 310 8358 (orders/subscription services)

Fax number: (012) 310 8332 (technical enquiries)

email: [onicama@statssa.gov.za](mailto:onicama@statssa.gov.za) (technical enquiries)  
[info@statssa.gov.za](mailto:info@statssa.gov.za) (user information services)  
[magdaj@statssa.gov.za](mailto:magdaj@statssa.gov.za) (orders/subscription services)

Postal address: Private Bag X44, Pretoria, 0001

*Produced by Stats SA*