



**stats sa**

Department:  
Statistics South Africa  
**REPUBLIC OF SOUTH AFRICA**

Private Bag X44, Pretoria, 0001, South Africa, ISibalo House, Koch Street, Salvokop, Pretoria, 0002  
www.statssa.gov.za, info@statssa.gov.za, Tel +27 12 310 8911

## **STATISTICAL RELEASE**

### **P0043**

# Statistics of liquidations and insolvencies (Preliminary)

January 2021

Embargoed until:  
22 February 2021  
14:30

ENQUIRIES:  
Joyce Essel-Mensah  
082 888 2374

FORTHCOMING ISSUE:  
February 2021

EXPECTED RELEASE DATE:  
23 March 2021



## Contents

<b>Liquidations: results for January 2021</b> .....	<b>2</b>
Table A – Number of liquidations.....	2
Figure 1 – Number of liquidations.....	2
<b>Insolvencies: results for December 2020</b> .....	<b>3</b>
Table B – Number of insolvencies .....	3
Figure 2 – Number of insolvencies .....	3
<b>Tables</b> .....	<b>4</b>
Table 1 – Total liquidations according to industry (number).....	4
Table 1.1 – Liquidations of companies according to industry (number).....	4
Table 1.2 – Liquidations of close corporations according to industry (number) .....	4
Table 2 – Total liquidations (number) .....	5
Table 2.1 – Compulsory liquidations (number) .....	5
Table 2.2 – Voluntary liquidations (number) .....	5
Table 3 – Total liquidations of companies (number).....	6
Table 3.1 – Compulsory liquidations of companies (number) .....	6
Table 3.2 – Voluntary liquidations of companies (number) .....	6
Table 4 – Total liquidations of close corporations (number).....	7
Table 4.1 – Compulsory liquidations of close corporations (number) .....	7
Table 4.2 – Voluntary liquidations of close corporations (number) .....	7
Table 5 – Insolvencies of individuals and partnerships (number) .....	8
Table 6 – Seasonally adjusted number of insolvencies .....	8
<b>Explanatory notes</b> .....	<b>9</b>
<b>Glossary</b> .....	<b>10</b>
<b>Technical enquiries</b> .....	<b>10</b>
<b>General information</b> .....	<b>11</b>

## Liquidations: results for January 2021

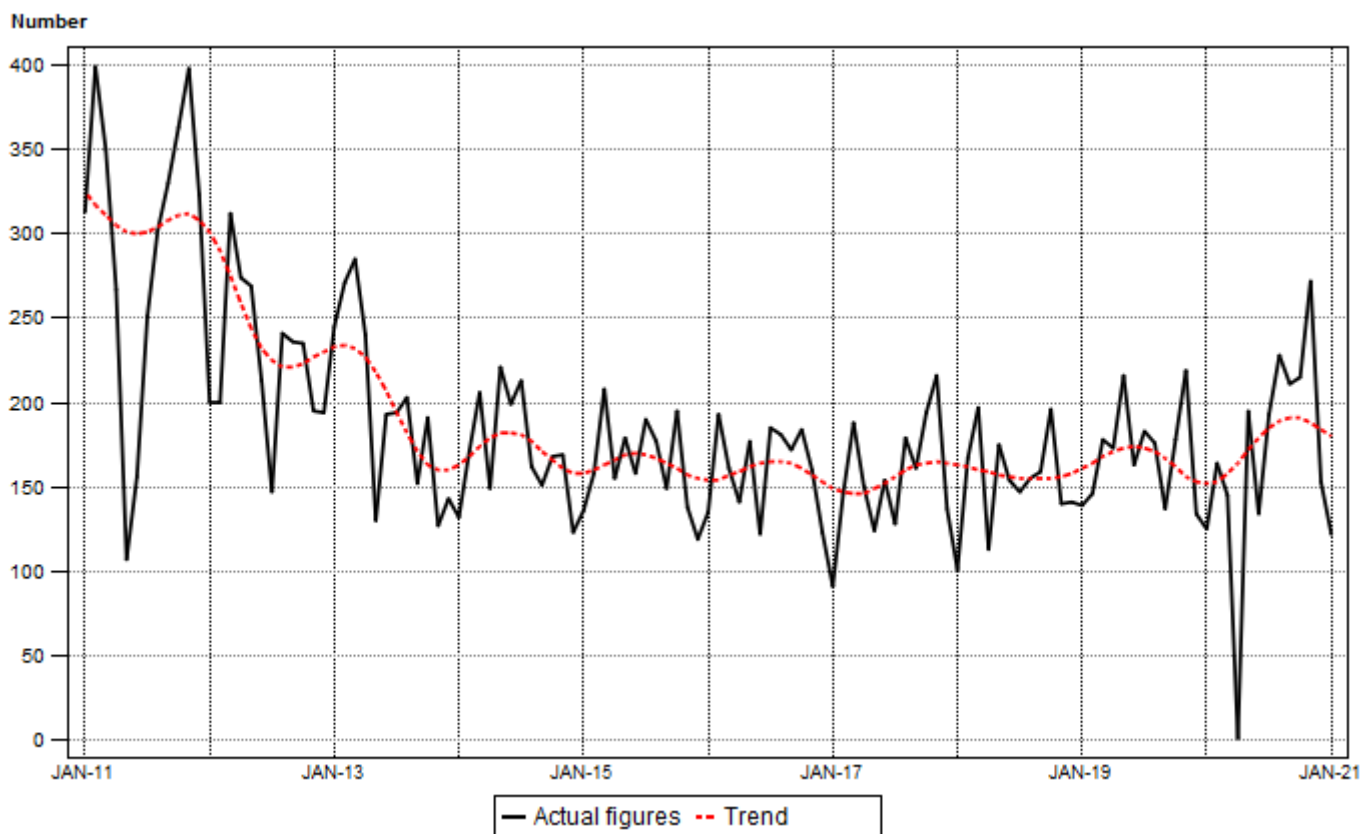
**Table A – Number of liquidations**

Number of liquidations January 2021	% change between January 2020 and January 2021	% change between November 2019 to January 2020 and November 2020 to January 2021
122	-2,4	14,4

The total number of liquidations decreased by 2,4% in January 2021 compared with January 2020. Liquidations of companies decreased by 9 cases, while liquidations of close corporations increased by 6 cases during this period.

The total number of liquidations increase by 14,4% in the three months ended January 2021 compared with the three months ended January 2020.

**Figure 1 – Number of liquidations**



## Insolvencies: results for December 2020

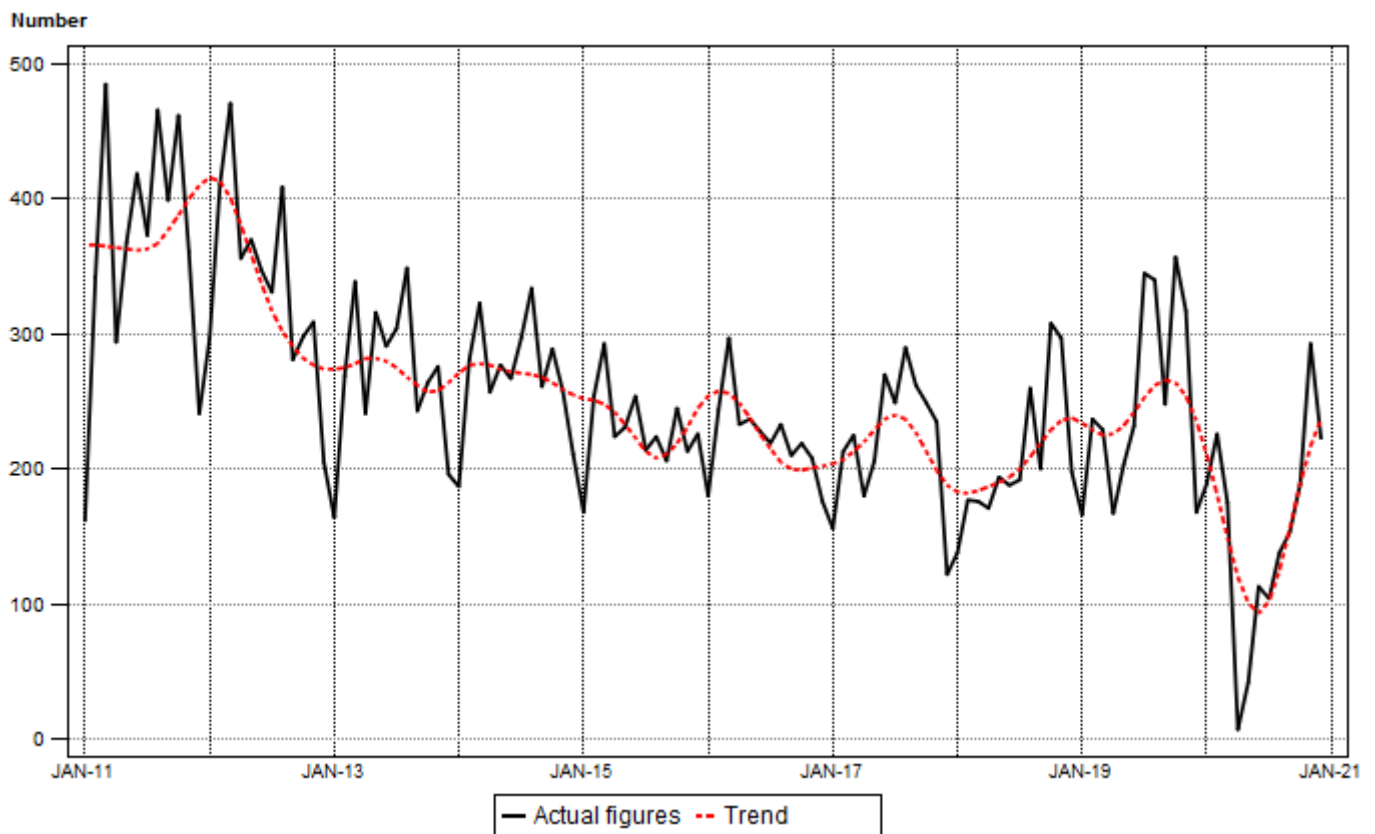
**Table B – Number of insolvencies**

Number of insolvencies December 2020	% change between December 2019 and December 2020	% change between October to December 2019 and October to December 2020	% change between January to December 2019 and January to December 2020
223	32,7	-16,3	-38,5

The estimated number of insolvencies decreased by 38,5% in 2020 compared with 2019. A 16,3% decrease was estimated between the fourth quarter of 2019 and the fourth quarter of 2020. There was a year-on-year increase of 32,7% in December 2020.

Seasonally adjusted insolvencies increased by 9,5% in December 2020 compared with November 2020. This followed month-on-month changes of 67,4% in November 2020 and -5,3% in October 2020 – see Table 6.

**Figure 2 – Number of insolvencies**



**Risenga Maluleke**  
**Statistician-General**

## Tables

**Table 1 – Total liquidations according to industry (number)**

Industry	Total 2020			January 2020			December 2020			January 2021		
	C	V	Total	C	V	Total	C	V	Total	C	V	Total
1.Agriculture, hunting, forestry and fishing	3	8	11	1	1	2	0	1	1	0	1	1
2.Mining and quarrying	4	11	15	1	0	1	0	2	2	0	1	1
3.Manufacturing	13	89	102	2	3	5	3	11	14	0	8	8
4.Electricity, gas and water	0	8	8	0	1	1	0	0	0	0	0	0
5.Construction	24	70	94	4	6	10	1	2	3	1	8	9
6.Trade, catering and accommodation	58	339	397	5	20	25	2	28	30	3	19	22
7.Transport, storage, communication	3	38	41	1	4	5	0	3	3	0	2	2
8.Financing, insurance, real estate, business services	78	557	635	9	33	42	5	41	46	10	29	39
9.Community, social, personal services	13	121	134	0	4	4	0	9	9	2	6	8
10.Unclassified	66	532	598	6	24	30	8	37	45	4	28	32
<b>Total number of liquidations</b>	<b>262</b>	<b>1 773</b>	<b>2 035</b>	<b>29</b>	<b>96</b>	<b>125</b>	<b>19</b>	<b>134</b>	<b>153</b>	<b>20</b>	<b>102</b>	<b>122</b>

**Table 1.1 – Liquidations of companies according to industry (number)**

Industry	Total 2020			January 2020			December 2020			January 2021		
	C	V	Total	C	V	Total	C	V	Total	C	V	Total
1.Agriculture, hunting, forestry and fishing	1	0	1	0	0	0	0	0	0	0	1	1
2.Mining and quarrying	4	10	14	1	0	1	0	2	2	0	0	0
3.Manufacturing	6	40	46	1	3	4	1	7	8	0	2	2
4.Electricity, gas and water	0	4	4	0	1	1	0	0	0	0	0	0
5.Construction	12	11	23	0	0	0	1	0	1	1	0	1
6.Trade, catering and accommodation	23	145	168	1	9	10	2	13	15	2	10	12
7.Transport, storage, communication	2	15	17	1	2	3	0	2	2	0	2	2
8.Financing, insurance, real estate, business services	48	291	339	7	19	26	3	27	30	6	13	19
9.Community, social, personal services	0	28	28	0	1	1	0	1	1	1	0	1
10.Unclassified	60	464	524	5	21	26	7	31	38	2	23	25
<b>Total number of liquidations</b>	<b>156</b>	<b>1 008</b>	<b>1 164</b>	<b>16</b>	<b>56</b>	<b>72</b>	<b>14</b>	<b>83</b>	<b>97</b>	<b>12</b>	<b>51</b>	<b>63</b>

**Table 1.2 – Liquidations of close corporations according to industry (number)**

Industry	Total 2020			January 2020			December 2020			January 2021		
	C	V	Total	C	V	Total	C	V	Total	C	V	Total
1.Agriculture, hunting, forestry and fishing	2	8	10	1	1	2	0	1	1	0	0	0
2.Mining and quarrying	0	1	1	0	0	0	0	0	0	0	1	1
3.Manufacturing	7	49	56	1	0	1	2	4	6	0	6	6
4.Electricity, gas and water	0	4	4	0	0	0	0	0	0	0	0	0
5.Construction	12	59	71	4	6	10	0	2	2	0	8	8
6.Trade, catering and accommodation	35	194	229	4	11	15	0	15	15	1	9	10
7.Transport, storage, communication	1	23	24	0	2	2	0	1	1	0	0	0
8.Financing, insurance, real estate, business services	30	266	296	2	14	16	2	14	16	4	16	20
9.Community, social, personal services	13	93	106	0	3	3	0	8	8	1	6	7
10.Unclassified	6	68	74	1	3	4	1	6	7	2	5	7
<b>Total number of liquidations</b>	<b>106</b>	<b>765</b>	<b>871</b>	<b>13</b>	<b>40</b>	<b>53</b>	<b>5</b>	<b>51</b>	<b>56</b>	<b>8</b>	<b>51</b>	<b>59</b>

C = Compulsory.

V = Voluntary.

**Table 2 – Total liquidations (number)**

Month	2015	2016	2017	2018	2019	2020	2021
January	136	135	91	101	139	125	122
February	158	193	146	167	146	164	
March	208	161	188	197	178	145	
April	155	141	150	113	173	0	
May	179	177	124	175	216	195	
June	158	122	154	154	163	134	
July	190	185	128	147	183	193	
August	177	181	179	155	176	228	
September	149	172	161	159	137	211	
October	195	184	194	196	178	215	
November	138	160	216	140	219	272	
December	119	123	137	141	134	153	
<b>Total</b>	<b>1 962</b>	<b>1 934</b>	<b>1 868</b>	<b>1 845</b>	<b>2 042</b>	<b>2 035</b>	

**Table 2.1 – Compulsory liquidations (number)**

Month	2015	2016	2017	2018	2019	2020	2021
January	13	16	6	11	17	29	20
February	22	13	13	26	14	10	
March	39	14	14	15	10	8	
April	7	24	4	16	35	0	
May	20	14	15	8	31	17	
June	29	10	17	11	24	12	
July	34	25	10	17	23	17	
August	23	9	21	23	16	13	
September	15	29	45	39	11	20	
October	14	20	32	17	15	36	
November	12	14	23	9	50	81	
December	10	12	11	7	12	19	
<b>Total</b>	<b>238</b>	<b>200</b>	<b>211</b>	<b>199</b>	<b>258</b>	<b>262</b>	

**Table 2.2 – Voluntary liquidations (number)**

Month	2015	2016	2017	2018	2019	2020	2021
January	123	119	85	90	122	96	102
February	136	180	133	141	132	154	
March	169	147	174	182	168	137	
April	148	117	146	97	138	0	
May	159	163	109	167	185	178	
June	129	112	137	143	139	122	
July	156	160	118	130	160	176	
August	154	172	158	132	160	215	
September	134	143	116	120	126	191	
October	181	164	162	179	163	179	
November	126	146	193	131	169	191	
December	109	111	126	134	122	134	
<b>Total</b>	<b>1 724</b>	<b>1 734</b>	<b>1 657</b>	<b>1 646</b>	<b>1 784</b>	<b>1 773</b>	

**Table 3 – Total liquidations of companies (number)**

Month	2015	2016	2017	2018	2019	2020	2021
January	79	66	42	67	64	72	63
February	80	100	81	94	78	83	
March	101	78	80	92	96	85	
April	70	80	73	64	89	0	
May	87	96	56	109	114	110	
June	90	65	84	74	85	80	
July	93	108	62	77	108	115	
August	87	97	94	68	78	135	
September	79	85	85	65	82	118	
October	88	98	106	102	98	119	
November	59	72	107	71	119	150	
December	56	67	88	89	68	97	
<b>Total</b>	<b>969</b>	<b>1 012</b>	<b>958</b>	<b>972</b>	<b>1 079</b>	<b>1 164</b>	

**Table 3.1 – Compulsory liquidations of companies (number)**

Month	2015	2016	2017	2018	2019	2020	2021
January	9	9	3	5	8	16	12
February	16	9	12	22	7	1	
March	18	6	6	5	5	4	
April	5	17	3	14	16	0	
May	16	9	5	5	19	9	
June	22	4	11	8	13	11	
July	21	9	4	9	16	12	
August	12	6	14	15	5	9	
September	3	17	25	22	6	13	
October	8	13	23	11	8	21	
November	7	6	9	8	30	46	
December	3	8	8	4	2	14	
<b>Total</b>	<b>140</b>	<b>113</b>	<b>123</b>	<b>128</b>	<b>135</b>	<b>156</b>	

**Table 3.2 – Voluntary liquidations of companies (number)**

Month	2015	2016	2017	2018	2019	2020	2021
January	70	57	39	62	56	56	51
February	64	91	69	72	71	82	
March	83	72	74	87	91	81	
April	65	63	70	50	73	0	
May	71	87	51	104	95	101	
June	68	61	73	66	72	69	
July	72	99	58	68	92	103	
August	75	91	80	53	73	126	
September	76	68	60	43	76	105	
October	80	85	83	91	90	98	
November	52	66	98	63	89	104	
December	53	59	80	85	66	83	
<b>Total</b>	<b>829</b>	<b>899</b>	<b>835</b>	<b>844</b>	<b>944</b>	<b>1 008</b>	

**Table 4 – Total liquidations of close corporations (number)**

Month	2015	2016	2017	2018	2019	2020	2021
January	57	69	49	34	75	53	59
February	78	93	65	73	68	81	
March	107	83	108	105	82	60	
April	85	61	77	49	84	0	
May	92	81	68	66	102	85	
June	68	57	70	80	78	54	
July	97	77	66	70	75	78	
August	90	84	85	87	98	93	
September	70	87	76	94	55	93	
October	107	86	88	94	80	96	
November	79	88	109	69	100	122	
December	63	56	49	52	66	56	
<b>Total</b>	<b>993</b>	<b>922</b>	<b>910</b>	<b>873</b>	<b>963</b>	<b>871</b>	

**Table 4.1 – Compulsory liquidations of close corporations (number)**

Month	2015	2016	2017	2018	2019	2020	2021
January	4	7	3	6	9	13	8
February	6	4	1	4	7	9	
March	21	8	8	10	5	4	
April	2	7	1	2	19	0	
May	4	5	10	3	12	8	
June	7	6	6	3	11	1	
July	13	16	6	8	7	5	
August	11	3	7	8	11	4	
September	12	12	20	17	5	7	
October	6	7	9	6	7	15	
November	5	8	14	1	20	35	
December	7	4	3	3	10	5	
<b>Total</b>	<b>98</b>	<b>87</b>	<b>88</b>	<b>71</b>	<b>123</b>	<b>106</b>	

**Table 4.2 – Voluntary liquidations of close corporations (number)**

Month	2015	2016	2017	2018	2019	2020	2021
January	53	62	46	28	66	40	51
February	72	89	64	69	61	72	
March	86	75	100	95	77	56	
April	83	54	76	47	65	0	
May	88	76	58	63	90	77	
June	61	51	64	77	67	53	
July	84	61	60	62	68	73	
August	79	81	78	79	87	89	
September	58	75	56	77	50	86	
October	101	79	79	88	73	81	
November	74	80	95	68	80	87	
December	56	52	46	49	56	51	
<b>Total</b>	<b>895</b>	<b>835</b>	<b>822</b>	<b>802</b>	<b>840</b>	<b>765</b>	



**Table 5 – Insolvencies of individuals and partnerships (number)**

Month	1/ 2014	1/ 2015	1/ 2016	1/ 2017	1/ 2018	1/ 2019	1/ 2020
January	187	168	180	156	138	166	189
February	281	254	244	213	177	237	226
March	323	293	297	225	176	229	175
April	257	224	233	180	171	167	7
May	277	231	237	206	194	203	42
June	267	254	228	270	188	232	113
July	297	214	219	249	192	345	104
August	334	224	233	290	260	340	138
September	261	206	210	262	200	248	153
October	289	245	219	249	308	357	189
November	258	213	208	235	297	317	293
December	211	226	176	122	198	168	223
<b>Total</b>	<b>3 242</b>	<b>2 752</b>	<b>2 684</b>	<b>2 657</b>	<b>2 499</b>	<b>3 009</b>	<b>1 852</b>

1/ Preliminary.

**Table 6 – Seasonally adjusted number of insolvencies**

Month	Number				Month-on-month % change			
	2017	2018	2019	2020	2017	2018	2019	2020
January	216	181	211	239	4,3	19,1	-15,6	13,8
February	214	178	238	233	-0,9	-1,7	12,8	-2,5
March	194	181	238	183	-9,3	1,7	0,0	-21,5
April	222	195	211	9	14,4	7,7	-11,3	-95,1
May	212	203	216	51	-4,5	4,1	2,4	466,7
June	256	192	247	115	20,8	-5,4	14,4	125,5
July	250	185	315	90	-2,3	-3,6	27,5	-21,7
August	236	206	278	117	-5,6	11,4	-11,7	30,0
September	275	215	255	152	16,5	4,4	-8,3	29,9
October	210	241	265	144	-23,6	12,1	3,9	-5,3
November	197	242	267	241	-6,2	0,4	0,8	67,4
December	152	250	210	264	-22,8	3,3	-21,3	9,5

## Explanatory notes

- |                                  |          |   |
|----------------------------------|----------|---|
| <b>Introduction</b>              | <b>1</b> | Statistics South Africa (Stats SA) collects administrative information on liquidations from Companies and Intellectual Property Commission, Department of Trade, Industry and Competition, while information on insolvencies is gathered from Notices of the Master of the High Court that appear in the Government Gazette.  |
|                                  | <b>2</b> | This statistical release reflects voluntary and compulsory liquidations of companies and close corporations and insolvencies of individuals and partnerships.   |
| <b>Purpose of the survey</b>     | <b>3</b> | The aggregated data in this release are used by the private and public sectors to measure economic performance and are also an important indicator of the scope of unpaid debt in South Africa.   |
|                                  | <b>4</b> | Due to insolvencies figures being available late, the data on insolvencies are published a month later than liquidations.   |
| <b>Scope of the survey</b>       | <b>5</b> | This survey covers the total number of: <ul style="list-style-type: none"> <li>• companies and close corporations which were liquidated; and</li> <li>• individuals and partnerships placed under final sequestration.</li> </ul>   |
| <b>Symbols and abbreviations</b> | <b>6</b> | Stats SA – Statistics South Africa  |
| <b>Seasonal adjustment</b>       | <b>7</b> | Seasonally adjusted estimates are generated each month using the X-12-ARIMA Seasonal Adjustment Program developed by the US Bureau of the Census, 1968. Seasonal adjustment is a means of removing the estimated effects of normal seasonal variation from the series so that the effects of other influences on the series can be recognised more clearly. Seasonal adjustment does not aim to remove irregular or non-seasonal influences which may be present in any particular month.   |
|                                  | <b>8</b> | Influences that are volatile or unsystematic can still make it difficult to interpret the movement of the series even after adjustment for seasonal variations. This means the month-to-month movements of seasonally adjusted estimates may not be reliable indicators of trend behaviour. The X-12-ARIMA procedure for liquidations and insolvencies is described in more detail on the Stats SA website:<br><a href="#">click to download seasonal adjustment P0043 April 2018</a> <p><b>Note:</b> Owing to the impact of the COVID-19 lockdown, additive outlier adjustments were performed. The methodology will be reviewed as more data points are added to the time series.</p> |
| <b>Trend cycle</b>               | <b>9</b> | The trend is the long-term pattern or movement of a time series. The X-12- ARIMA Seasonal Adjustment Program is used for smoothing seasonally adjusted estimates to estimate the underlying trend cycle.  |

## Glossary

<b>Compulsory liquidation</b>	A compulsory liquidation takes place when the affairs of a company or close corporation are wound up by order of the court.
<b>Insolvency</b>	Insolvency refers to an individual or partnership which is unable to pay its debt and is placed under final sequestration. The number of insolvencies does not refer to the number of persons involved, as a partnership which is unable to pay its debt is regarded as one insolvency, irrespective of the number of partners.
<b>Liquidation</b>	Liquidation refers to the winding-up of the affairs of a company or close corporation when liabilities exceed assets and it can be resolved by voluntary action or by an order of the court.
<b>Voluntary liquidation</b>	A voluntary liquidation takes place when a company or close corporation, by own choice, resolves to wind-up its affairs.

## Technical enquiries

<b>Onica Mushwana</b>	Telephone number: 073 554 1183 Email: <a href="mailto:onicama@statssa.gov.za">onicama@statssa.gov.za</a>
<b>Joyce Essel-Mensah</b>	Telephone number: 082 888 2374 Email: <a href="mailto:JoyceE@statssa.gov.za">JoyceE@statssa.gov.za</a>

## General information

Stats SA publishes approximately 300 different statistical releases each year. It is not economically viable to produce them in more than one of South Africa's eleven official languages. Since the releases are used extensively, not only locally but also by international economic and social-scientific communities, Stats SA releases are published in English only.

Stats SA has copyright on this publication. Users may apply the information as they wish, provided that they acknowledge Stats SA as the source of the basic data wherever they process, apply, utilise, publish or distribute the data; and also that they specify that the relevant application and analysis (where applicable) result from their own processing of the data.

## Stats SA products

A complete set of Stats SA publications is available at the Stats SA library and the following libraries:

National Library of South Africa, Pretoria Division  
National Library of South Africa, Cape Town Division  
Natal Society Library, Pietermaritzburg  
Library of Parliament, Cape Town  
Bloemfontein Public Library  
Johannesburg Public Library  
Eastern Cape Library Services, King William's Town  
Central Regional Library, Polokwane  
Central Reference Library, Mbombela  
Central Reference Collection, Kimberley  
Central Reference Library, Mmabatho

Stats SA also provides a subscription service.

## Electronic services

A large range of data is available via online services. For more detail about our electronic services, contact Stats SA's user information service at (012) 310 8600.

You can visit us on the Internet at: [www.statssa.gov.za](http://www.statssa.gov.za)

## General enquiries

User information services	Telephone number: (012) 310 8600 Email address: <a href="mailto:info@statssa.gov.za">info@statssa.gov.za</a>
Orders/subscription services	Telephone number: (012) 310 8619 Email address: <a href="mailto:millies@statssa.gov.za">millies@statssa.gov.za</a>
Postal address	Private Bag X44, Pretoria, 0001

*Produced by Stats SA*