

STATISTICAL RELEASE
P0043

Statistics of liquidations and insolvencies
(Preliminary)

January 2017

Embargoed until:
27 February 2017
14:30

ENQUIRIES:
Juan-Pierre Terblanche
012 310 2965

FORTHCOMING ISSUE:
February 2017

EXPECTED RELEASE DATE:
27 March 2017

www.statssa.gov.za
info@statssa.gov.za
T +27 12 310 8911
F +27 12 310 8500

Private Bag X44, Pretoria, 0001, South Africa
ISibalo House, Koch Street, Salvokop, Pretoria, 0002



Contents

Liquidations: results for January 2017	2
Table A – Number of liquidations.....	2
Figure 1 – Number of liquidations.....	2
Insolvencies: results for December 2016	3
Table B – Number of insolvencies	3
Figure 2 – Number of insolvencies	3
Tables.....	4
Table 1 – Total liquidations according to industry (number)	4
Table 1.1 – Liquidations of companies according to industry (number)	4
Table 1.2 – Liquidations of close corporations according to industry (number)	4
Table 2 – Total liquidations (number)	5
Table 2.1 – Compulsory liquidations (number).....	5
Table 2.2 – Voluntary liquidations (number)	5
Table 3.1 – Compulsory liquidations of companies (number)	6
Table 3.2 – Voluntary liquidations of companies (number).....	6
Table 4 – Total liquidations of close corporations (number)	7
Table 4.1 – Compulsory liquidations of close corporations (number).....	7
Table 4.2 – Voluntary liquidations of close corporations (number)	7
Table 5 – Insolvencies of individuals and partnerships (number)	8
Explanatory notes.....	9
Glossary	9
Technical enquiries	9
General information.....	10

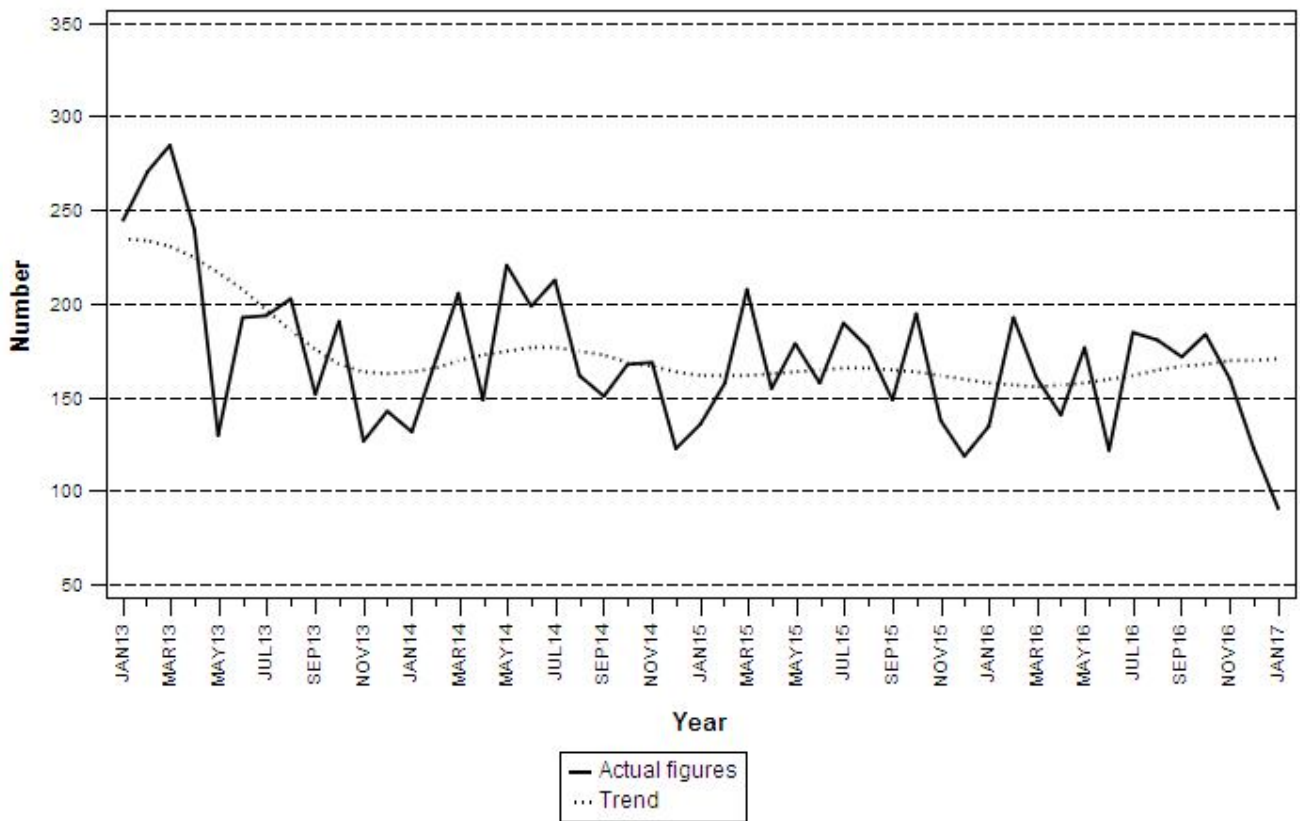
Liquidations: results for January 2017

Table A – Number of liquidations

Number of liquidations January 2017	% change between January 2016 and January 2017	% change between November 2015 to January 2016 and November 2016 to January 2017
91	-32,6	-4,6

The total number of liquidations decreased by 32,6% (44 fewer liquidations) year-on-year in January 2017. Voluntary liquidations decreased by 34 cases and compulsory liquidations decreased by 10 cases during this period. There was a decrease of 4,6% in the three months ended January 2017 compared with the three months ended January 2016.

Figure 1 – Number of liquidations



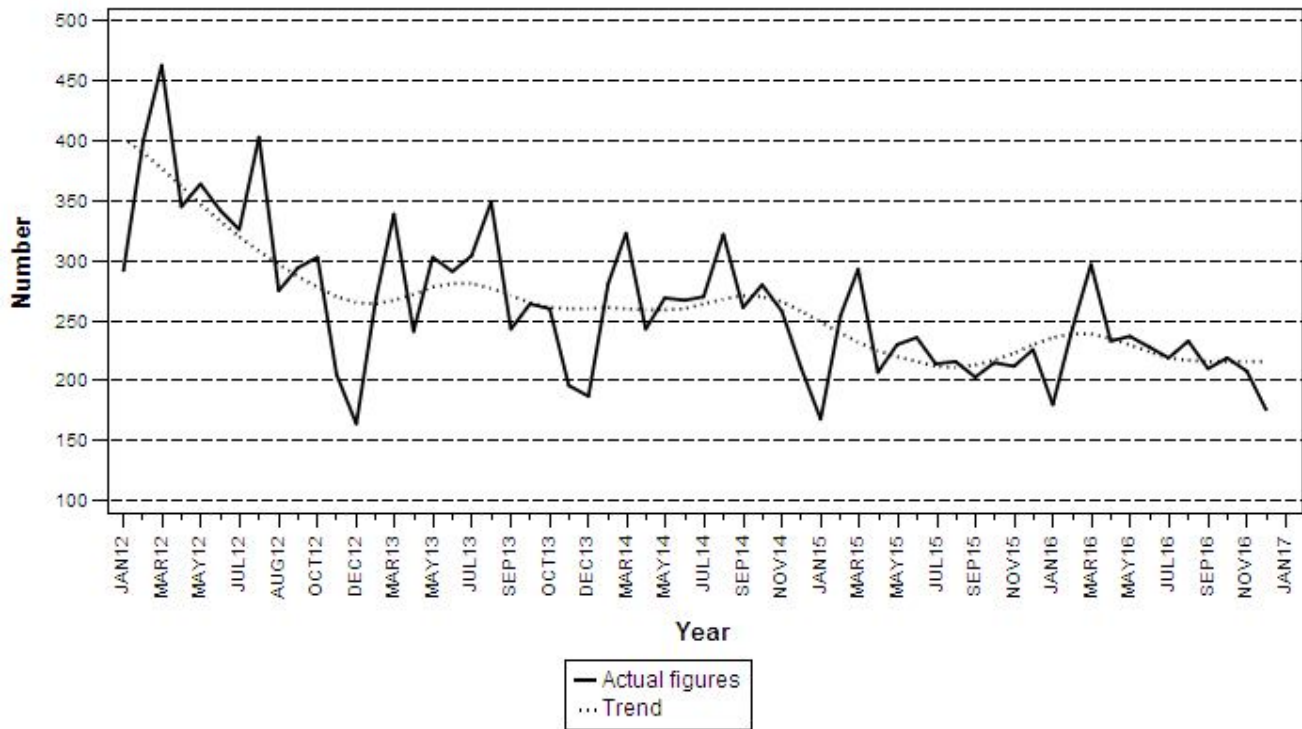
Insolvencies: results for December 2016

Table B – Number of insolvencies

Number of insolvencies December 2016	% change between December 2015 and December 2016	% change between October to December 2015 and October to December 2016	% change between January to December 2015 and January to December 2016
176	-22,1	-7,7	0,4

The estimated number of insolvencies decreased by 22,1% in December 2016 compared with December 2015. A 7,7% decrease was estimated between the fourth quarter of 2015 and fourth quarter of 2016. Insolvencies increased by 0,4% (from 2 674 to 2 684) between 2015 and 2016.

Figure 2 – Number of insolvencies



PJ Lehohla
Statistician-General

Tables

Table 1 – Total liquidations according to industry (number)

Industry	Total 2016			January 2016			December 2016			January 2017		
	C	V	Total	C	V	Total	C	V	Total	C	V	Total
1.Agriculture, hunting, forestry and fishing	4	16	20	0	7	7	0	1	1	0	0	0
2.Mining and quarrying	0	8	8	0	0	0	0	0	0	0	0	0
3.Manufacturing	5	72	77	1	6	7	0	4	4	0	2	2
4.Electricity, gas and water	1	4	5	0	1	1	1	0	1	0	1	1
5.Construction	10	83	93	0	10	10	1	0	1	0	2	2
6.Trade, catering and accommodation	52	404	456	3	23	26	3	25	28	0	24	24
7.Transport, storage, communication	5	32	37	1	2	3	0	2	2	1	1	2
8.Financing, insurance, real estate, business services	74	676	750	11	48	59	5	50	55	4	26	30
9.Community, social, personal services	16	132	148	0	6	6	0	7	7	0	10	10
10.Unclassified	33	307	340	0	16	16	2	22	24	1	19	20
Total number of liquidations	200	1 734	1 934	16	119	135	12	111	123	6	85	91

Table 1.1 – Liquidations of companies according to industry (number)

Industry	Total 2016			January 2016			December 2016			January 2017		
	C	V	Total	C	V	Total	C	V	Total	C	V	Total
1.Agriculture, hunting, forestry and fishing	1	10	11	0	6	6	0	0	0	0	0	0
2.Mining and quarrying	0	7	7	0	0	0	0	0	0	0	0	0
3.Manufacturing	4	32	36	0	1	1	0	4	4	0	0	0
4.Electricity, gas and water	0	1	1	0	0	0	0	0	0	0	0	0
5.Construction	2	20	22	0	0	0	0	0	0	0	2	2
6.Trade, catering and accommodation	24	159	183	2	6	8	3	12	15	0	7	7
7.Transport, storage, communication	1	12	13	1	1	2	0	1	1	0	1	1
8.Financing, insurance, real estate, business services	46	367	413	6	32	38	4	21	25	2	13	15
9.Community, social, personal services	7	35	42	0	1	1	0	1	1	0	0	0
10.Unclassified	28	256	284	0	10	10	1	20	21	1	16	17
Total number of liquidations	113	899	1 012	9	57	66	8	59	67	3	39	42

Table 1.2 – Liquidations of close corporations according to industry (number)

Industry	Total 2016			January 2016			December 2016			January 2017		
	C	V	Total	C	V	Total	C	V	Total	C	V	Total
1.Agriculture, hunting, forestry and fishing	3	6	9	0	1	1	0	1	1	0	0	0
2.Mining and quarrying	0	1	1	0	0	0	0	0	0	0	0	0
3.Manufacturing	1	40	41	1	5	6	0	0	0	0	2	2
4.Electricity, gas and water	1	3	4	0	1	1	1	0	1	0	1	1
5.Construction	8	63	71	0	10	10	1	0	1	0	0	0
6.Trade, catering and accommodation	28	245	273	1	17	18	0	13	13	0	17	17
7.Transport, storage, communication	4	20	24	0	1	1	0	1	1	1	0	1
8.Financing, insurance, real estate, business services	28	309	337	5	16	21	1	29	30	2	13	15
9.Community, social, personal services	9	97	106	0	5	5	0	6	6	0	10	10
10.Unclassified	5	51	56	0	6	6	1	2	3	0	3	3
Total number of liquidations	87	835	922	7	62	69	4	52	56	3	46	49

C = Compulsory.

V = Voluntary.

Table 2 – Total liquidations (number)

Month	2011	2012	2013	2014	2015	2016	2017
January	313	200	245	132	136	135	91
February	399	200	271	171	158	193	
March	350	312	285	206	208	161	
April	267	274	240	149	155	141	
May	107	269	130	221	179	177	
June	156	213	193	199	158	122	
July	251	147	194	213	190	185	
August	302	241	203	162	177	181	
September	330	236	152	151	149	172	
October	363	235	191	168	195	184	
November	398	195	127	169	138	160	
December	323	194	143	123	119	123	
Total	3 559	2 716	2 374	2 064	1 962	1 934	

Table 2.1 – Compulsory liquidations (number)

Month	2011	2012	2013	2014	2015	2016	2017
January	45	61	3	22	13	16	6
February	26	27	26	12	22	13	
March	12	39	53	18	39	14	
April	16	4	17	35	7	24	
May	30	3	9	29	20	14	
June	2	14	16	89	29	10	
July	8	1	18	47	34	25	
August	14	63	19	25	23	9	
September	18	58	13	20	15	29	
October	61	21	9	33	14	20	
November	74	18	4	23	12	14	
December	75	8	24	13	10	12	
Total	381	317	211	366	238	200	

Table 2.2 – Voluntary liquidations (number)

Month	2011	2012	2013	2014	2015	2016	2017
January	268	139	242	110	123	119	85
February	373	173	245	159	136	180	
March	338	273	232	188	169	147	
April	251	270	223	114	148	117	
May	77	266	121	192	159	163	
June	154	199	177	110	129	112	
July	243	146	176	166	156	160	
August	288	178	184	137	154	172	
September	312	178	139	131	134	143	
October	302	214	182	135	181	164	
November	324	177	123	146	126	146	
December	248	186	119	110	109	111	
Total	3 178	2 399	2 163	1 698	1 724	1 734	

Table 3 – Total liquidations of companies (number)

Month	2011	2012	2013	2014	2015	2016	2017
January	156	97	121	74	79	66	42
February	199	75	123	87	80	100	
March	145	115	147	89	101	78	
April	97	105	104	78	70	80	
May	36	130	56	108	87	96	
June	52	105	96	104	90	65	
July	81	74	92	109	93	108	
August	180	133	97	86	87	97	
September	190	136	82	75	79	85	
October	167	109	100	78	88	98	
November	152	72	55	75	59	72	
December	151	108	75	65	56	67	
Total	1 606	1 259	1 148	1 028	969	1 012	

Table 3.1 – Compulsory liquidations of companies (number)

Month	2011	2012	2013	2014	2015	2016	2017
January	18	37	3	16	9	9	3
February	16	11	5	7	16	9	
March	12	11	32	6	18	6	
April	0	2	10	24	5	17	
May	3	3	7	20	16	9	
June	1	14	11	54	22	4	
July	4	0	9	26	21	9	
August	0	34	11	20	12	6	
September	18	41	9	13	3	17	
October	59	14	4	22	8	13	
November	42	6	2	6	7	6	
December	47	2	14	8	3	8	
Total	220	175	117	222	140	113	

Table 3.2 – Voluntary liquidations of companies (number)

Month	2011	2012	2013	2014	2015	2016	2017
January	138	60	118	58	70	57	39
February	183	64	118	80	64	91	
March	133	104	115	83	83	72	
April	97	103	94	54	65	63	
May	33	127	49	88	71	87	
June	51	91	85	50	68	61	
July	77	74	83	83	72	99	
August	180	99	86	66	75	91	
September	172	95	73	62	76	68	
October	108	95	96	56	80	85	
November	110	66	53	69	52	66	
December	104	106	61	57	53	59	
Total	1 386	1 084	1 031	806	829	899	

Table 4 – Total liquidations of close corporations (number)

Month	2011	2012	2013	2014	2015	2016	2017
January	157	103	124	58	57	69	49
February	200	125	148	84	78	93	
March	205	197	138	117	107	83	
April	170	169	136	71	85	61	
May	71	139	74	113	92	81	
June	104	108	97	95	68	57	
July	170	73	102	104	97	77	
August	122	108	106	76	90	84	
September	140	100	70	76	70	87	
October	196	126	91	90	107	86	
November	246	123	72	94	79	88	
December	172	86	68	58	63	56	
Total	1 953	1 457	1 226	1 036	993	922	

Table 4.1 – Compulsory liquidations of close corporations (number)

Month	2011	2012	2013	2014	2015	2016	2017
January	27	24	0	6	4	7	3
February	10	16	21	5	6	4	
March	0	28	21	12	21	8	
April	16	2	7	11	2	7	
May	27	0	2	9	4	5	
June	1	0	5	35	7	6	
July	4	1	9	21	13	16	
August	14	29	8	5	11	3	
September	0	17	4	7	12	12	
October	2	7	5	11	6	7	
November	32	12	2	17	5	8	
December	28	6	10	5	7	4	
Total	161	142	94	144	98	87	

Table 4.2 – Voluntary liquidations of close corporations (number)

Month	2011	2012	2013	2014	2015	2016	2017
January	130	79	124	52	53	62	46
February	190	109	127	79	72	89	
March	205	169	117	105	86	75	
April	154	167	129	60	83	54	
May	44	139	72	104	88	76	
June	103	108	92	60	61	51	
July	166	72	93	83	84	61	
August	108	79	98	71	79	81	
September	140	83	66	69	58	75	
October	194	119	86	79	101	79	
November	214	111	70	77	74	80	
December	144	80	58	53	56	52	
Total	1 792	1 315	1 132	892	895	835	

Table 5 – Insolvencies of individuals and partnerships (number)

Month	1/ 2010	1/ 2011	1/ 2012	1/ 2013	1/ 2014	1/ 2015	1/ 2016
January	177	161	292	164	187	168	180
February	340	337	400	269	281	254	244
March	397	478	463	339	323	293	297
April	325	290	345	241	243	207	233
May	397	363	364	303	269	230	237
June	351	418	342	291	267	236	228
July	406	371	326	304	270	214	219
August	389	463	403	349	322	216	233
September	417	393	275	243	261	203	210
October	392	459	294	264	280	215	219
November	397	353	303	260	258	212	208
December	336	241	205	196	211	226	176
Total	4 324	4 327	4 012	3 223	3 172	2 674	2 684

1/ Preliminary.

Explanatory notes

Introduction	1	Statistics South Africa (Stats SA) collects administrative information on liquidations from Companies and Intellectual Property Commission, Department of Trade and Industry, while information on insolvencies is gathered from Notices of the Master of the Supreme Court that appear in the Government Gazette.
	2	This statistical release reflects voluntary and compulsory liquidations of companies and close corporations and insolvencies of individuals and partnerships.
Purpose of the survey	3	The aggregated data in this release are used by the private and public sectors to measure economic performance and are also an important indicator of the scope of unpaid debt in South Africa.
	4	Due to insolvencies figures being available late, the data on insolvencies are published a month later than liquidations.
Scope of the survey	5	This survey covers the total number of: <ul style="list-style-type: none"> • companies and close corporations which were liquidated; and • individuals and partnerships placed under final sequestration.
Symbols and abbreviations	6	Stats SA – Statistics South Africa

Glossary

Compulsory liquidation	A compulsory liquidation takes place when the affairs of a company or close corporation are wound up by order of the court.
Insolvency	Insolvency refers to an individual or partnership which is unable to pay its debt and is placed under final sequestration. The number of insolvencies does not refer to the number of persons involved, as a partnership which is unable to pay its debt is regarded as one insolvency, irrespective of the number of partners.
Liquidation	Liquidation refers to the winding-up of the affairs of a company or close corporation when liabilities exceed assets and it can be resolved by voluntary action or by an order of the court.
Voluntary liquidation	A voluntary liquidation takes place when a company or close corporation, by own choice, resolves to wind-up its affairs.

Technical enquiries

JP Terblanche	Telephone number: (012) 310 2965 Email: juan-pierret@statssa.gov.za
Sinethemba Mhlongo	Telephone number: (012) 310 3382 Email: sinethemban@statssa.gov.za

General information

Stats SA publishes approximately 300 different statistical releases each year. It is not economically viable to produce them in more than one of South Africa's eleven official languages. Since the releases are used extensively, not only locally but also by international economic and social-scientific communities, Stats SA releases are published in English only.

Stats SA has copyright on this publication. Users may apply the information as they wish, provided that they acknowledge Stats SA as the source of the basic data wherever they process, apply, utilise, publish or distribute the data; and also that they specify that the relevant application and analysis (where applicable) result from their own processing of the data.

Stats SA products

A complete set of Stats SA publications is available at the Stats SA library and the following libraries:

National Library of South Africa, Pretoria Division
National Library of South Africa, Cape Town Division
Natal Society Library, Pietermaritzburg
Library of Parliament, Cape Town
Bloemfontein Public Library
Johannesburg Public Library
Eastern Cape Library Services, King William's Town
Central Regional Library, Polokwane
Central Reference Library, Mbombela
Central Reference Collection, Kimberley
Central Reference Library, Mmabatho

Stats SA also provides a subscription service.

Electronic services

A large range of data is available via online services. For more detail about our electronic services, contact Stats SA's user information service at (012) 310 8600.

You can visit us on the Internet at: www.statssa.gov.za

General enquiries

User information services Telephone number: (012) 310 8600
 Email address: info@statssa.gov.za

Postal address Private Bag X44, Pretoria, 0001

Produced by Stats SA