

**Statistics of liquidations
and insolvencies
(preliminary)
January 2005**

**Embargoed until:
3 March 2005
09:30**

These figures are issued as preliminary

Table A - Key figures as at the end of January 2005 regarding liquidations

Actual estimates	Number of liquidations January 2005	% change between January 2004 and January 2005	% change between August 2004 to October 2004 and November 2004 to January 2005
	328	-15,5	-15,5

Key findings as at the end of January 2005 regarding liquidations

Total number of liquidations decreases

The total number of liquidations recorded for the three months ended January 2005 decreased by 15,5 % (from 950 to 803) compared with the previous three months. Furthermore, the total number of liquidations recorded for January 2005 decreased by 15,5% (from 388 to 328) compared with January 2004.

The decrease of 15,5% in the total number of liquidations for January 2005 compared with January 2004 was due to a decrease of 28,6% (from 42 to 30) in compulsory liquidations and 13,9% (from 346 to 298) in voluntary liquidations.

The decrease of 15,5% in the total number of liquidations for three months ended January 2005 compared with the previous three months was due to a decrease of 44,2% (from 165 to 92) in compulsory liquidations and a decrease of 9,4% (from 785 to 711) in voluntary liquidations.

Table B - Key figures regarding insolvencies for December 2004

Actual estimates	Number of insolvencies December 2004	% change between December 2003 and December 2004	% change between July 2004 to September 2004 and October 2004 to December 2004	% change between January 2003 to December 2003 and January 2004 to December 2004
	114	-42,4	-5,9	-34,3

Key findings as at the end of December 2004 regarding insolvencies

Total number of insolvencies lower than a year ago

The total number of insolvencies for the year 2004 decreased by 34,3% (from 2 584 to 1 697) compared with year 2003.

The total number of insolvencies recorded for the fourth quarter of 2004 decreased by 5,9% (from 375 to 353) compared with the third quarter of 2004. The total number of insolvencies for December 2004 decreased by 42,4% (from 198 to 114) compared with December 2003.

Figures 1 and 2 outline the total number of liquidations and insolvencies from 2000 to 2005.

Figure 1 – Total number of liquidations

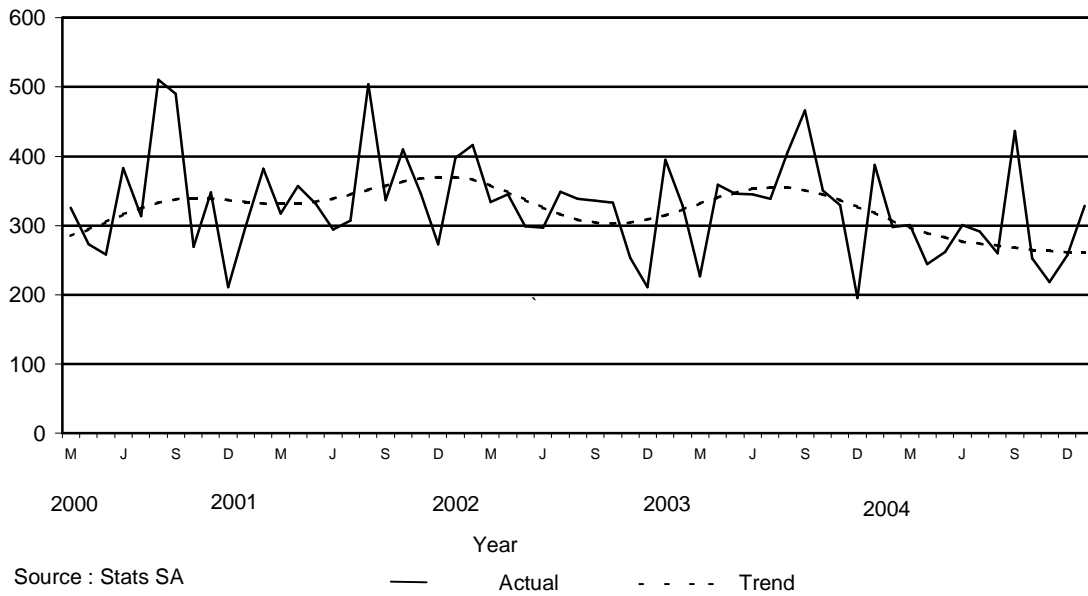
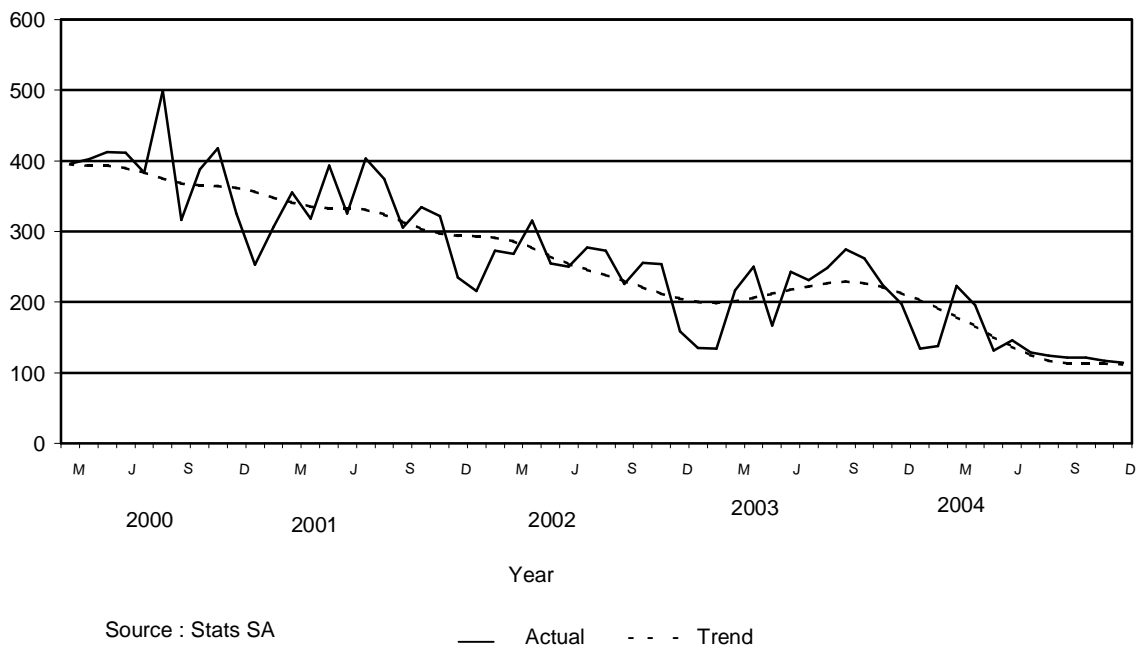


Figure 2 - Total number of insolvencies



PP
PJ Lehohla
Statistician-General

Contents

	Page
Notes	4
Tables	
Table 1 Total number of liquidations according to industry	5
Table 2 Number of liquidations of companies according to industry	5
Table 3 Number of liquidations of close corporations according to industry	5
Table 4 Total number of liquidations: 1999 to 2005	6
Table 5 Total number of compulsory liquidations: 1999 to 2005	6
Table 6 Total number of voluntary liquidations: 1999 to 2005	6
Table 7 Number of liquidations of companies: 1999 to 2005	7
Table 8 Number of compulsory liquidations of companies: 1999 to 2005	7
Table 9 Number of voluntary liquidations of companies: 1999 to 2005	7
Table 10 Number of liquidations of close corporations: 1999 to 2005	8
Table 11 Number of compulsory liquidations of close corporations: 1999 to 2005	8
Table 12 Number of voluntary liquidations of close corporations: 1999 to 2005	8
Table 13 Total number of insolvencies: 1998 to 2004	9
Table 14 Percentage change between January 2004 and January 2005 in the number of liquidations.....	10
Table 15 Percentage change between the current quarter and the previous quarter in the number of liquidations.....	10
Table 16 Percentage change between January 2004 and January 2005 in the number of insolvencies.....	10
Table 17 Percentage change between the current quarter and the previous quarter in the number of insolvencies....	10
Table 18 Percentage change between 2003 and 2004 in the number of insolvencies.....	10
Explanatory notes	11
Glossary	12
General information	13

Notes**Forthcoming issue****Issue****Expected release date**

February 2005

31 March 2005

Data source

Information on liquidations is obtained from the Registrar of Companies and Close Corporations, Department of Trade and Industry, while information on insolvencies is based on Notices of the Master of the Supreme Court, which appear in the Government Gazette. The aggregated data in this release are used by the private and public sectors to measure economic performance and are also an important indicator of the scope of unpaid debt in South Africa.

Table 1- Total number of liquidations according to industry

Industry	2004 Total			January 2004			December 2004			January 2005		
	Compul-sory	Volun-tary	Total	Compul-sory	Volun-tary	Total	Compul-sory	Volun-tary	Total	Compul-sory	Volun-tary	Total
Agriculture, hunting, forestry and fishing	13	42	55	1	9	10	0	2	2	0	4	4
Mining and quarrying	7	22	29	0	3	3	0	0	0	0	2	2
Manufacturing	52	218	270	8	32	40	0	21	21	2	18	20
Electricity, gas and water	2	6	8	0	1	1	0	0	0	0	0	0
Construction	43	211	254	5	26	31	3	18	21	0	34	34
Wholesale and retail trade, catering and accommodation	182	987	1169	12	102	114	13	71	84	14	102	116
Transport, storage and communication	23	112	135	1	16	17	4	15	19	4	10	14
Financing, insurance, real estate and business services	191	1064	1255	7	110	117	17	78	95	10	100	110
Community, social and personal services	51	284	335	8	47	55	2	13	15	0	28	28
Total number of liquidations	564	2946	3510	42	346	388	39	218	257	30	298	328

Table 2 – Number of liquidations of companies according to industry

Industry	2004 Total			January 2004			December 2004			January 2005		
	Compul-sory	Volun-tary	Total	Compul-sory	Volun-tary	Total	Compul-sory	Volun-tary	Total	Compul-sory	Volun-tary	Total
Agriculture, hunting, forestry and fishing	2	22	24	0	5	5	0	0	0	0	2	2
Mining and quarrying	5	9	14	0	1	1	0	0	0	0	2	2
Manufacturing	20	85	105	1	18	19	0	3	3	2	4	6
Electricity, gas and water	1	4	5	0	0	0	0	0	0	0	0	0
Construction	12	38	50	1	6	7	1	2	3	0	16	16
Wholesale and retail trade, catering and accommodation	58	369	427	5	44	49	1	14	15	2	34	36
Transport, storage and communication	6	42	48	0	7	7	0	1	1	0	2	2
Financing, insurance, real estate and business services	78	504	582	2	52	54	5	35	40	2	44	46
Community, social and personal services	41	236	277	7	42	49	2	11	13	0	20	20
Total number of liquidations	223	1309	1532	16	175	191	9	66	75	6	124	130

Table 3 – Number of liquidations of close corporations according to industry

Industry	2004 Total			January 2004			December 2004			January 2005		
	Compul-sory	Volun-tary	Total	Compul-sory	Volun-tary	Total	Compul-sory	Volun-tary	Total	Compul-sory	Volun-tary	Total
Agriculture, hunting, forestry and fishing	11	20	31	1	4	5	0	2	2	0	2	2
Mining and quarrying	2	13	15	0	2	2	0	0	0	0	0	0
Manufacturing	32	133	165	7	14	21	0	18	18	0	14	14
Electricity, gas and water	1	2	3	0	1	1	0	0	0	0	0	0
Construction	31	173	204	4	20	24	2	16	18	0	18	18
Wholesale and retail trade, catering and accommodation	124	618	742	7	58	65	12	57	69	12	68	80
Transport, storage and communication	17	70	87	1	9	10	4	14	18	4	8	12
Financing, insurance, real estate and business services	113	560	673	5	58	63	12	43	55	8	56	64
Community, social and personal services	10	48	58	1	5	6	0	2	2	0	8	8
Total number of liquidations	341	1637	1978	26	171	197	30	152	182	24	174	198

Table 4 - Total number of liquidations: 1999 to 2005

Month	1999	2000	2001	2002	2003	2004	2005
January	367	193	298	398	395	388	328
February	367	229	382	416	328	298	
March	332	326	317	334	227	301	
April	370	273	357	345	359	244	
May	379	258	331	299	346	262	
June	297	383	294	297	345	301	
July	333	314	307	349	339	291	
August	326	511	504	339	406	260	
September	421	490	337	336	466	437	
October	277	269	410	333	351	253	
November	341	348	346	254	329	218	
December	202	211	273	211	195	257	
Year	4 012	3 805	4 156	3 911	4 086	3 510	

Table 5 - Total number of compulsory liquidations: 1999 to 2005

Month	1999	2000	2001	2002	2003	2004	2005
January	244	85	71	78	76	42	30
February	177	78	114	87	65	38	
March	132	172	68	68	46	57	
April	177	125	125	87	63	32	
May	186	57	81	60	52	37	
June	131	190	88	69	74	63	
July	140	77	81	69	85	68	
August	132	247	256	74	120	39	
September	169	241	118	70	109	83	
October	102	44	137	54	70	43	
November	159	128	74	64	60	23	
December	95	71	71	45	37	39	
Year	1 844	1 515	1 284	825	857	564	

Table 6 - Total number of voluntary liquidations: 1999 to 2005

Month	1999	2000	2001	2002	2003	2004	2005
January	123	108	227	320	319	346	298
February	190	151	268	329	263	260	
March	200	154	249	266	181	244	
April	193	148	232	258	296	212	
May	193	201	250	239	294	225	
June	166	193	206	228	271	238	
July	193	237	226	280	254	223	
August	194	264	248	265	286	221	
September	252	249	219	266	357	354	
October	175	225	273	279	281	210	
November	182	220	272	190	269	195	
December	107	140	202	166	158	218	
Year	2 168	2 290	2 872	3 086	3 229	2 946	

Table 7 – Number of liquidations of companies: 1999 to 2005

Month	1999	2000	2001	2002	2003	2004	2005
January	134	91	107	130	200	191	130
February	198	151	119	212	188	132	
March	165	241	132	183	127	148	
April	166	166	129	161	151	119	
May	142	130	156	117	162	128	
June	114	173	129	145	178	136	
July	114	89	144	183	141	132	
August	169	152	149	173	202	114	
September	157	93	136	164	260	141	
October	145	106	166	118	235	126	
November	136	112	181	106	136	90	
December	98	122	123	166	130	75	
Year	1 738	1 626	1 671	1 858	2 110	1 532	

Table 8 – Number of compulsory liquidations of companies: 1999 to 2005

Month	1999	2000	2001	2002	2003	2004	2005
January	69	32	34	19	37	16	6
February	96	57	17	46	28	15	
March	70	147	28	32	17	32	
April	87	87	27	53	17	6	
May	73	40	41	12	28	20	
June	46	100	53	29	31	16	
July	43	32	41	33	29	31	
August	77	48	38	17	69	11	
September	61	31	54	22	60	33	
October	65	21	51	22	42	22	
November	76	25	35	25	38	12	
December	47	39	24	29	27	9	
Year	810	659	443	339	423	223	

Table 9 - Number of voluntary liquidations of companies: 1999 to 2005

Month	1999	2000	2001	2002	2003	2004	2005
January	65	59	73	111	163	175	124
February	102	94	102	166	160	117	
March	95	94	104	151	110	116	
April	79	79	102	108	134	113	
May	69	90	115	105	134	108	
June	68	73	76	116	147	120	
July	71	57	103	150	112	101	
August	92	104	111	156	133	103	
September	96	62	82	142	200	108	
October	80	85	115	96	193	104	
November	60	87	146	81	98	78	
December	51	83	99	137	103	66	
Year	928	967	1 228	1 519	1 687	1 309	

Table 10 - Number of liquidations of close corporations: 1999 to 2005

Month	1999	2000	2001	2002	2003	2004	2005
January	233	102	191	268	195	197	198
February	169	78	263	204	140	166	
March	167	85	185	151	100	153	
April	204	107	228	184	208	125	
May	237	128	175	182	184	134	
June	183	210	165	152	167	165	
July	219	225	163	166	198	159	
August	157	359	355	166	204	146	
September	264	397	201	172	206	296	
October	132	163	244	215	116	127	
November	205	236	165	148	193	128	
December	104	89	150	45	65	182	
Year	2 274	2 179	2 485	2 053	1 976	1 978	

Table 11 - Number of compulsory liquidations of close corporations: 1999 to 2005

Month	1999	2000	2001	2002	2003	2004	2005
January	175	53	37	59	39	26	24
February	81	21	97	41	37	23	
March	62	25	40	36	29	25	
April	90	38	98	34	46	26	
May	113	17	40	48	24	17	
June	85	90	35	40	43	47	
July	97	45	40	36	56	37	
August	55	199	218	57	51	28	
September	108	210	64	48	49	50	
October	37	23	86	32	28	21	
November	83	103	39	39	22	11	
December	48	32	47	16	10	30	
Year	1 034	856	841	486	434	341	

Table 12 – Number of voluntary liquidations of close corporations: 1999 to 2005

Month	1999	2000	2001	2002	2003	2004	2005
January	58	49	154	209	156	171	174
February	88	57	166	163	103	143	
March	105	60	145	115	71	128	
April	114	69	130	150	162	99	
May	124	111	135	134	160	117	
June	98	120	130	112	124	118	
July	122	180	123	130	142	122	
August	102	160	137	109	153	118	
September	156	187	137	124	157	246	
October	95	140	158	183	88	106	
November	122	133	126	109	171	117	
December	56	57	103	29	55	152	
Year	1 240	1 323	1 644	1 567	1 542	1 637	

Table 13 - Total number of insolvencies: 1998 to 2004

Month	1998	1999	2000	2001	2002*	2003*	2004*
January	203	354	285	253	216	135	134
February	259	372	445	306	273	134	138
March	418	645	396	355	268	217	223
April	345	475	402	318	315	250	196
May	278	547	412	393	255	167	132
June	339	703	411	325	250	243	146
July	326	471	383	403	277	231	129
August	378	604	499	374	273	248	124
September	367	479	316	306	226	275	122
October	416	525	388	334	256	262	122
November	507	567	418	322	254	224	117
December	453	271	326	235	159	198	114
Year	4 289	6 013	4 681	3 924	3 022	2 584	1 697

* Revised

Table 14 – Percentage change between January 2004 and January 2005 in the number of liquidations

Actual estimates	Number of liquidations January 2004	Number of liquidations January 2005	% change between January 2004 and January 2005	Difference between January 2004 and January 2005
		388	328	-15,5

Table 15 – Percentage change between the current quarter and the previous quarter in the number of liquidations

Actual estimates	Number of liquidations August 2004 to October 2004	Number of liquidations November 2004 to January 2005	% change between August 2004 to October 2004 and November 2004 to January 2005	Difference between August 2004 to October 2004 and November 2004 to January 2005
		950	803	-15,5

Table 16 – Percentage change between January 2004 and January 2005 in the number of insolvencies

Actual estimates	Number of insolvencies December 2003	Number of insolvencies December 2004	% change between December 2003 and December 2004	Difference between December 2003 and December 2004
		198	114	-42,4

Table 17 - Percentage change between the current quarter and the previous quarter in the number of insolvencies

Actual estimates	Number of insolvencies July 2003 to September 2003	Number of insolvencies October 2004 to December 2004	% change between July 2003 to September 2003 and October 2004 to December 2004	Difference between July 2003 to September 2003 and October 2004 to December 2004
		375	353	-5,9

Table 18 - Percentage change between the year 2003 and 2004 in the number of insolvencies

Actual estimates	Number of insolvencies January 2003 to December 2003	Number of insolvencies January 2004 to December 2004	% change between January 2003 to December 2003 and January 2004 to December 2004	Difference between January 2003 to December 2003 and January 2004 to December 2004
		2 584	1 697	-34,3

Glossary

Compulsory liquidation	A compulsory liquidation takes place when the affairs of a company or close corporation are wound up by order of the court.
Insolvency	An insolvency refers to an individual or partnership which is unable to pay its debt and is placed under final sequestration. The number of insolvencies does not refer to the number of persons involved, as a partnership which is unable to pay its debt is regarded as one insolvency, irrespective of the number of partners.
Liquidation	A liquidation refers to the winding-up of the affairs of a company or close corporation when liabilities exceed assets and it can be resolved by voluntary action or by an order of the court.
Voluntary liquidation	A voluntary liquidation takes place when a company or close corporation, by own choice, resolves to wind-up its affairs.

General information

Stats SA publishes approximately 300 different statistical releases each year. It is not economically viable to produce them in more than one of South Africa's eleven official languages. Since the releases are used extensively, not only locally but also by international economic and social-scientific communities, Stats SA releases are published in English only.

Stats SA has copyright on this publication. Users may apply the information as they wish, provided that they acknowledge Stats SA as the source of the basic data wherever they process, apply, utilise, publish or distribute the data; and also that they specify that the relevant application and analysis (where applicable) result from their own processing of the data.

Stats SA products

A complete set of Stats SA publications is available at the Stats SA Library and the following libraries:

National Library of South Africa, Pretoria Division
National Library of South Africa, Cape Town Division
Natal Society Library, Pietermaritzburg
Library of Parliament, Cape Town
Bloemfontein Public Library
Johannesburg Public Library
Eastern Cape Library Services, King William's Town
Central Regional Library, Polokwane
Central Reference Library, Nelspruit
Central Reference Collection, Kimberley
Central Reference Library, Mmabatho

Stats SA also provides a subscription service.

Electronic services

A large range of data are available via on-line services, diskette, CD and computer printouts. For more details about our electronic data services, contact (012) 310 8600/8390/8351/4892/8964/8095.

You can visit us on the internet at: www.statssa.gov.za

Enquiries

Telephone number: (012) 310 8600/ 8390/ 8351/ 4892/ 8964/ 8095 (user information services)
(012) 310 8220 (technical enquiries)
(012) 310 8161 (orders)
(012) 310 8490 (library)

Fax number: (012) 310 8332 (technical enquiries)

email: mpelim@statssa.gov.za (technical enquiries)
info@statssa.gov.za (user information services)
distribution@statssa.gov.za (orders)

Postal address: Private Bag X44, Pretoria, 0001

Produced by Stats SA