

**Statistics of liquidations  
and insolvencies  
(preliminary)  
February 2005**

**Embargoed until:  
26 April 2005  
09:30**

**These figures are issued as preliminary**

**Table A - Key figures as at the end of February 2005 regarding liquidations**

| Actual estimates | Number of liquidations February 2005 | % change between February 2004 and February 2005 | % change between September 2004 to November 2004 and December 2004 to February 2005 |
|------------------|--------------------------------------|--|---|
|                  | 296                                  | -0,7   | -3,0  |

**Key findings as at the end of February 2005 regarding liquidations**

**Total number of liquidations decreases**

*The total number of liquidations recorded for the three months ended February 2005 decreased by 3,0 % (from 908 to 881) compared with the previous three months. Furthermore, the total number of liquidations recorded for February 2005 decreased by 0,7% (from 298 to 296) compared with February 2004.*

The decrease of 3,0% in the total number of liquidations for three months ended February 2005 compared with the previous three months was due to a decrease of 6,7% (from 149 to 139) in compulsory liquidations and a decrease of 2,2% (from 759 to 742) in voluntary liquidations.

The decrease of 0,7% in the total number of liquidations for February 2005 compared with February 2004 was due to a decrease of 13,1% (from 260 to 226) in voluntary liquidations.

**Table B - Key figures regarding insolvencies for January 2005**

| Actual estimates | Number of insolvencies January 2005 | % change between January 2004 and January 2005 | % change between August 2004 to October 2004 and November 2004 to January 2005 |
|------------------|-------------------------------------|--|--|
|                  | 103                                 | -25,9  | -13,9  |

**Key findings as at the end of January 2005 regarding insolvencies**

**Total number of insolvencies decreases**

The total number of insolvencies recorded for the three months ended January 2005 decreased by 13,9% (from 388 to 334) compared with the previous three months. The total number of insolvencies for January 2005 decreased by 25,9% (from 139 to 103) compared with January 2004.

Figures 1 and 2 outline the total number of liquidations and insolvencies from 2001 to 2005.

Figure 1 – Total number of liquidations

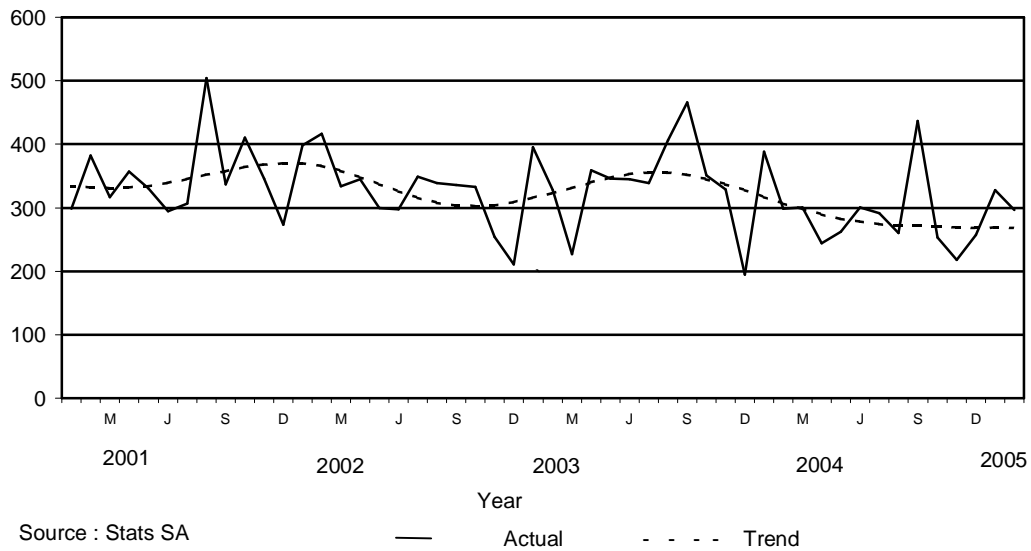
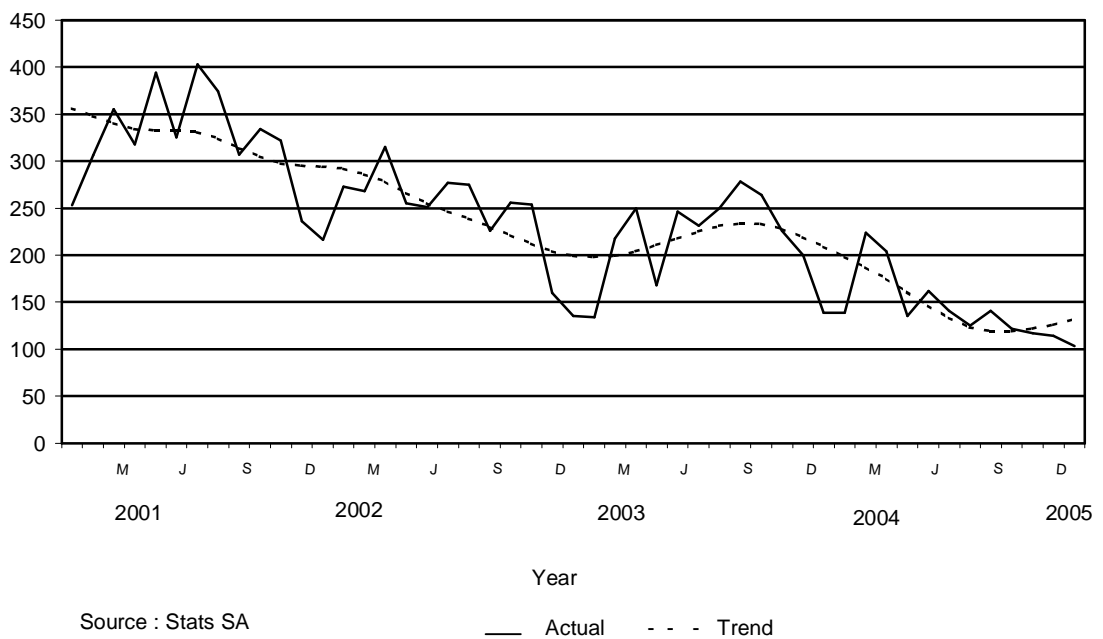


Figure 2 - Total number of insolvencies



PP  
PJ Lehohla

**Statistician-General**

**Contents**

|  | Page |
|--|------|
| <b>Notes</b> .....   | 4    |
| <b>Tables</b>  |      |
| Table 1 Total number of liquidations according to industry .....   | 5    |
| Table 2 Number of liquidations of companies according to industry .....  | 5    |
| Table 3 Number of liquidations of close corporations according to industry .....   | 5    |
| Table 4 Total number of liquidations: 1999 to 2005 .....   | 6    |
| Table 5 Total number of compulsory liquidations: 1999 to 2005 .....  | 6    |
| Table 6 Total number of voluntary liquidations: 1999 to 2005 .....   | 6    |
| Table 7 Number of liquidations of companies: 1999 to 2005 .....  | 7    |
| Table 8 Number of compulsory liquidations of companies: 1999 to 2005 .....   | 7    |
| Table 9 Number of voluntary liquidations of companies: 1999 to 2005 .....  | 7    |
| Table 10 Number of liquidations of close corporations: 1999 to 2005 .....  | 8    |
| Table 11 Number of compulsory liquidations of close corporations: 1999 to 2005 .....   | 8    |
| Table 12 Number of voluntary liquidations of close corporations: 1999 to 2005 .....  | 8    |
| Table 13 Total number of insolvencies: 1999 to 2005 .....  | 9    |
| Table 14 Percentage between the current month and the corresponding month of the previous year regarding the number of liquidations .....        | 10   |
| Table 15 Percentage between the current quarter and the previous quarter regarding the number of liquidations.....                               | 10   |
| Table 16 Percentage change between the current month and the corresponding month of the previous year regarding the number of insolvencies ..... | 10   |
| Table 17 Percentage change between the current quarter and the previous quarter regarding the number of insolvencies .....                       | 10   |
| <b>Explanatory notes</b> .....   | 11   |
| <b>Glossary</b> .....  | 12   |
| <b>General information</b> .....   | 13   |

**Notes****Forthcoming issue****Issue****Expected release date**

March 2005

28 April 2005

**Data source**

Information on liquidations is obtained from the Registrar of Companies and Close Corporations, Department of Trade and Industry, while information on insolvencies is based on Notices of the Master of the Supreme Court, which appear in the Government Gazette. The aggregated data in this release are used by the private and public sectors to measure economic performance and are also an important indicator of the scope of unpaid debt in South Africa.

**Table 1- Total number of liquidations according to industry**

| Industry  | 2004 Total  |             |             | February 2004 |            |            | January 2005 |            |            | February 2005 |            |            |
|---|-------------|-------------|-------------|---------------|------------|------------|--------------|------------|------------|---------------|------------|------------|
|   | Compul-sory | Volun-tary  | Total       | Compul-sory   | Volun-tary | Total      | Compul-sory  | Volun-tary | Total      | Compul-sory   | Volun-tary | Total      |
| Agriculture, hunting, forestry and fishing              | 13          | 42          | 55          | 0             | 5          | 5          | 0            | 4          | 4          | 1             | 3          | 4          |
| Mining and quarrying                                    | 7           | 22          | 29          | 1             | 0          | 1          | 0            | 2          | 2          | 0             | 0          | 0          |
| Manufacturing   | 52          | 218         | 270         | 7             | 21         | 28         | 2            | 18         | 20         | 7             | 12         | 19         |
| Electricity, gas and water                              | 2           | 6           | 8           | 0             | 0          | 0          | 0            | 0          | 0          | 0             | 0          | 0          |
| Construction  | 43          | 211         | 254         | 4             | 14         | 18         | 0            | 34         | 34         | 2             | 18         | 20         |
| Wholesale and retail trade, catering and accommodation  | 182         | 987         | 1169        | 7             | 86         | 93         | 14           | 102        | 116        | 20            | 86         | 106        |
| Transport, storage and communication                    | 23          | 112         | 135         | 4             | 6          | 10         | 4            | 10         | 14         | 3             | 4          | 7          |
| Financing, insurance, real estate and business services | 191         | 1064        | 1255        | 15            | 91         | 106        | 10           | 100        | 110        | 22            | 84         | 106        |
| Community, social and personal services                 | 51          | 284         | 335         | 0             | 37         | 37         | 0            | 28         | 28         | 15            | 19         | 34         |
| <b>Total number of liquidations</b>                     | <b>564</b>  | <b>2946</b> | <b>3510</b> | <b>38</b>     | <b>260</b> | <b>298</b> | <b>30</b>    | <b>298</b> | <b>328</b> | <b>70</b>     | <b>226</b> | <b>296</b> |

**Table 2 – Number of liquidations of companies according to industry**

| Industry  | 2004 Total  |             |             | February 2004 |            |            | January 2005 |            |            | February 2005 |            |            |
|---|-------------|-------------|-------------|---------------|------------|------------|--------------|------------|------------|---------------|------------|------------|
|   | Compul-sory | Volun-tary  | Total       | Compul-sory   | Volun-tary | Total      | Compul-sory  | Volun-tary | Total      | Compul-sory   | Volun-tary | Total      |
| Agriculture, hunting, forestry and fishing              | 2           | 22          | 24          | 0             | 2          | 2          | 0            | 2          | 2          | 0             | 1          | 1          |
| Mining and quarrying                                    | 5           | 9           | 14          | 0             | 0          | 0          | 0            | 2          | 2          | 0             | 0          | 0          |
| Manufacturing   | 20          | 85          | 105         | 2             | 9          | 11         | 2            | 4          | 6          | 3             | 6          | 9          |
| Electricity, gas and water                              | 1           | 4           | 5           | 0             | 0          | 0          | 0            | 0          | 0          | 0             | 0          | 0          |
| Construction  | 12          | 38          | 50          | 1             | 1          | 2          | 0            | 16         | 16         | 0             | 4          | 4          |
| Wholesale and retail trade, catering and accommodation  | 58          | 369         | 427         | 1             | 36         | 37         | 2            | 34         | 36         | 10            | 32         | 42         |
| Transport, storage and communication                    | 6           | 42          | 48          | 1             | 2          | 3          | 0            | 2          | 2          | 2             | 1          | 3          |
| Financing, insurance, real estate and business services | 78          | 504         | 582         | 10            | 37         | 47         | 2            | 44         | 46         | 13            | 50         | 63         |
| Community, social and personal services                 | 41          | 236         | 277         | 0             | 30         | 30         | 0            | 20         | 20         | 15            | 17         | 32         |
| <b>Total number of liquidations</b>                     | <b>223</b>  | <b>1309</b> | <b>1532</b> | <b>15</b>     | <b>117</b> | <b>132</b> | <b>6</b>     | <b>124</b> | <b>130</b> | <b>43</b>     | <b>111</b> | <b>154</b> |

**Table 3 – Number of liquidations of close corporations according to industry**

| Industry  | 2004 Total  |             |             | February 2004 |            |            | January 2005 |            |            | February 2005 |            |            |
|---|-------------|-------------|-------------|---------------|------------|------------|--------------|------------|------------|---------------|------------|------------|
|   | Compul-sory | Volun-tary  | Total       | Compul-sory   | Volun-tary | Total      | Compul-sory  | Volun-tary | Total      | Compul-sory   | Volun-tary | Total      |
| Agriculture, hunting, forestry and fishing              | 11          | 20          | 31          | 0             | 3          | 3          | 0            | 2          | 2          | 1             | 2          | 3          |
| Mining and quarrying                                    | 2           | 13          | 15          | 1             |            | 1          | 0            | 0          | 0          | 0             | 0          | 0          |
| Manufacturing   | 32          | 133         | 165         | 5             | 12         | 17         | 0            | 14         | 14         | 4             | 6          | 10         |
| Electricity, gas and water                              | 1           | 2           | 3           | 0             | 0          | 0          | 0            | 0          | 0          | 0             | 0          | 0          |
| Construction  | 31          | 173         | 204         | 3             | 13         | 16         | 0            | 18         | 18         | 2             | 14         | 16         |
| Wholesale and retail trade, catering and accommodation  | 124         | 618         | 742         | 6             | 50         | 56         | 12           | 68         | 80         | 10            | 54         | 64         |
| Transport, storage and communication                    | 17          | 70          | 87          | 3             | 4          | 7          | 4            | 8          | 12         | 1             | 3          | 4          |
| Financing, insurance, real estate and business services | 113         | 560         | 673         | 5             | 54         | 59         | 8            | 56         | 64         | 9             | 34         | 43         |
| Community, social and personal services                 | 10          | 48          | 58          | 0             | 7          | 7          | 0            | 8          | 8          | 0             | 2          | 2          |
| <b>Total number of liquidations</b>                     | <b>341</b>  | <b>1637</b> | <b>1978</b> | <b>23</b>     | <b>143</b> | <b>166</b> | <b>24</b>    | <b>174</b> | <b>198</b> | <b>27</b>     | <b>115</b> | <b>142</b> |

**Table 4 - Total number of liquidations: 1999 to 2005**

| Month       | 1999         | 2000         | 2001         | 2002         | 2003         | 2004         | 2005 |
|-------------|--------------|--------------|--------------|--------------|--------------|--------------|------|
| January     | 367          | 193          | 298          | 398          | 395          | 388          | 328  |
| February    | 367          | 229          | 382          | 416          | 328          | 298          | 296  |
| March       | 332          | 326          | 317          | 334          | 227          | 301          |      |
| April       | 370          | 273          | 357          | 345          | 359          | 244          |      |
| May         | 379          | 258          | 331          | 299          | 346          | 262          |      |
| June        | 297          | 383          | 294          | 297          | 345          | 301          |      |
| July        | 333          | 314          | 307          | 349          | 339          | 291          |      |
| August      | 326          | 511          | 504          | 339          | 406          | 260          |      |
| September   | 421          | 490          | 337          | 336          | 466          | 437          |      |
| October     | 277          | 269          | 410          | 333          | 351          | 253          |      |
| November    | 341          | 348          | 346          | 254          | 329          | 218          |      |
| December    | 202          | 211          | 273          | 211          | 195          | 257          |      |
| <b>Year</b> | <b>4 012</b> | <b>3 805</b> | <b>4 156</b> | <b>3 911</b> | <b>4 086</b> | <b>3 510</b> |      |

**Table 5 - Total number of compulsory liquidations: 1999 to 2005**

| Month       | 1999         | 2000         | 2001         | 2002       | 2003       | 2004       | 2005 |
|-------------|--------------|--------------|--------------|------------|------------|------------|------|
| January     | 244          | 85           | 71           | 78         | 76         | 42         | 30   |
| February    | 177          | 78           | 114          | 87         | 65         | 38         | 70   |
| March       | 132          | 172          | 68           | 68         | 46         | 57         |      |
| April       | 177          | 125          | 125          | 87         | 63         | 32         |      |
| May         | 186          | 57           | 81           | 60         | 52         | 37         |      |
| June        | 131          | 190          | 88           | 69         | 74         | 63         |      |
| July        | 140          | 77           | 81           | 69         | 85         | 68         |      |
| August      | 132          | 247          | 256          | 74         | 120        | 39         |      |
| September   | 169          | 241          | 118          | 70         | 109        | 83         |      |
| October     | 102          | 44           | 137          | 54         | 70         | 43         |      |
| November    | 159          | 128          | 74           | 64         | 60         | 23         |      |
| December    | 95           | 71           | 71           | 45         | 37         | 39         |      |
| <b>Year</b> | <b>1 844</b> | <b>1 515</b> | <b>1 284</b> | <b>825</b> | <b>857</b> | <b>564</b> |      |

**Table 6 - Total number of voluntary liquidations: 1999 to 2005**

| Month       | 1999         | 2000         | 2001         | 2002         | 2003         | 2004         | 2005 |
|-------------|--------------|--------------|--------------|--------------|--------------|--------------|------|
| January     | 123          | 108          | 227          | 320          | 319          | 346          | 298  |
| February    | 190          | 151          | 268          | 329          | 263          | 260          | 226  |
| March       | 200          | 154          | 249          | 266          | 181          | 244          |      |
| April       | 193          | 148          | 232          | 258          | 296          | 212          |      |
| May         | 193          | 201          | 250          | 239          | 294          | 225          |      |
| June        | 166          | 193          | 206          | 228          | 271          | 238          |      |
| July        | 193          | 237          | 226          | 280          | 254          | 223          |      |
| August      | 194          | 264          | 248          | 265          | 286          | 221          |      |
| September   | 252          | 249          | 219          | 266          | 357          | 354          |      |
| October     | 175          | 225          | 273          | 279          | 281          | 210          |      |
| November    | 182          | 220          | 272          | 190          | 269          | 195          |      |
| December    | 107          | 140          | 202          | 166          | 158          | 218          |      |
| <b>Year</b> | <b>2 168</b> | <b>2 290</b> | <b>2 872</b> | <b>3 086</b> | <b>3 229</b> | <b>2 946</b> |      |

**Table 7 – Number of liquidations of companies: 1999 to 2005**

| Month       | 1999         | 2000         | 2001         | 2002         | 2003         | 2004         | 2005 |
|-------------|--------------|--------------|--------------|--------------|--------------|--------------|------|
| January     | 134          | 91           | 107          | 130          | 200          | 191          | 130  |
| February    | 198          | 151          | 119          | 212          | 188          | 132          | 154  |
| March       | 165          | 241          | 132          | 183          | 127          | 148          |      |
| April       | 166          | 166          | 129          | 161          | 151          | 119          |      |
| May         | 142          | 130          | 156          | 117          | 162          | 128          |      |
| June        | 114          | 173          | 129          | 145          | 178          | 136          |      |
| July        | 114          | 89           | 144          | 183          | 141          | 132          |      |
| August      | 169          | 152          | 149          | 173          | 202          | 114          |      |
| September   | 157          | 93           | 136          | 164          | 260          | 141          |      |
| October     | 145          | 106          | 166          | 118          | 235          | 126          |      |
| November    | 136          | 112          | 181          | 106          | 136          | 90           |      |
| December    | 98           | 122          | 123          | 166          | 130          | 75           |      |
| <b>Year</b> | <b>1 738</b> | <b>1 626</b> | <b>1 671</b> | <b>1 858</b> | <b>2 110</b> | <b>1 532</b> |      |

**Table 8 – Number of compulsory liquidations of companies: 1999 to 2005**

| Month       | 1999       | 2000       | 2001       | 2002       | 2003       | 2004       | 2005 |
|-------------|------------|------------|------------|------------|------------|------------|------|
| January     | 69         | 32         | 34         | 19         | 37         | 16         | 6    |
| February    | 96         | 57         | 17         | 46         | 28         | 15         | 43   |
| March       | 70         | 147        | 28         | 32         | 17         | 32         |      |
| April       | 87         | 87         | 27         | 53         | 17         | 6          |      |
| May         | 73         | 40         | 41         | 12         | 28         | 20         |      |
| June        | 46         | 100        | 53         | 29         | 31         | 16         |      |
| July        | 43         | 32         | 41         | 33         | 29         | 31         |      |
| August      | 77         | 48         | 38         | 17         | 69         | 11         |      |
| September   | 61         | 31         | 54         | 22         | 60         | 33         |      |
| October     | 65         | 21         | 51         | 22         | 42         | 22         |      |
| November    | 76         | 25         | 35         | 25         | 38         | 12         |      |
| December    | 47         | 39         | 24         | 29         | 27         | 9          |      |
| <b>Year</b> | <b>810</b> | <b>659</b> | <b>443</b> | <b>339</b> | <b>423</b> | <b>223</b> |      |

**Table 9 - Number of voluntary liquidations of companies: 1999 to 2005**

| Month       | 1999       | 2000       | 2001         | 2002         | 2003         | 2004         | 2005 |
|-------------|------------|------------|--------------|--------------|--------------|--------------|------|
| January     | 65         | 59         | 73           | 111          | 163          | 175          | 124  |
| February    | 102        | 94         | 102          | 166          | 160          | 117          | 111  |
| March       | 95         | 94         | 104          | 151          | 110          | 116          |      |
| April       | 79         | 79         | 102          | 108          | 134          | 113          |      |
| May         | 69         | 90         | 115          | 105          | 134          | 108          |      |
| June        | 68         | 73         | 76           | 116          | 147          | 120          |      |
| July        | 71         | 57         | 103          | 150          | 112          | 101          |      |
| August      | 92         | 104        | 111          | 156          | 133          | 103          |      |
| September   | 96         | 62         | 82           | 142          | 200          | 108          |      |
| October     | 80         | 85         | 115          | 96           | 193          | 104          |      |
| November    | 60         | 87         | 146          | 81           | 98           | 78           |      |
| December    | 51         | 83         | 99           | 137          | 103          | 66           |      |
| <b>Year</b> | <b>928</b> | <b>967</b> | <b>1 228</b> | <b>1 519</b> | <b>1 687</b> | <b>1 309</b> |      |



**Table 10 - Number of liquidations of close corporations: 1999 to 2005**

| Month       | 1999         | 2000         | 2001         | 2002         | 2003         | 2004         | 2005 |
|-------------|--------------|--------------|--------------|--------------|--------------|--------------|------|
| January     | 233          | 102          | 191          | 268          | 195          | 197          | 198  |
| February    | 169          | 78           | 263          | 204          | 140          | 166          | 142  |
| March       | 167          | 85           | 185          | 151          | 100          | 153          |      |
| April       | 204          | 107          | 228          | 184          | 208          | 125          |      |
| May         | 237          | 128          | 175          | 182          | 184          | 134          |      |
| June        | 183          | 210          | 165          | 152          | 167          | 165          |      |
| July        | 219          | 225          | 163          | 166          | 198          | 159          |      |
| August      | 157          | 359          | 355          | 166          | 204          | 146          |      |
| September   | 264          | 397          | 201          | 172          | 206          | 296          |      |
| October     | 132          | 163          | 244          | 215          | 116          | 127          |      |
| November    | 205          | 236          | 165          | 148          | 193          | 128          |      |
| December    | 104          | 89           | 150          | 45           | 65           | 182          |      |
| <b>Year</b> | <b>2 274</b> | <b>2 179</b> | <b>2 485</b> | <b>2 053</b> | <b>1 976</b> | <b>1 978</b> |      |

**Table 11 - Number of compulsory liquidations of close corporations: 1999 to 2005**

| Month       | 1999         | 2000       | 2001       | 2002       | 2003       | 2004       | 2005 |
|-------------|--------------|------------|------------|------------|------------|------------|------|
| January     | 175          | 53         | 37         | 59         | 39         | 26         | 24   |
| February    | 81           | 21         | 97         | 41         | 37         | 23         | 27   |
| March       | 62           | 25         | 40         | 36         | 29         | 25         |      |
| April       | 90           | 38         | 98         | 34         | 46         | 26         |      |
| May         | 113          | 17         | 40         | 48         | 24         | 17         |      |
| June        | 85           | 90         | 35         | 40         | 43         | 47         |      |
| July        | 97           | 45         | 40         | 36         | 56         | 37         |      |
| August      | 55           | 199        | 218        | 57         | 51         | 28         |      |
| September   | 108          | 210        | 64         | 48         | 49         | 50         |      |
| October     | 37           | 23         | 86         | 32         | 28         | 21         |      |
| November    | 83           | 103        | 39         | 39         | 22         | 11         |      |
| December    | 48           | 32         | 47         | 16         | 10         | 30         |      |
| <b>Year</b> | <b>1 034</b> | <b>856</b> | <b>841</b> | <b>486</b> | <b>434</b> | <b>341</b> |      |

**Table 12 – Number of voluntary liquidations of close corporations: 1999 to 2005**

| Month       | 1999         | 2000         | 2001         | 2002         | 2003         | 2004         | 2005 |
|-------------|--------------|--------------|--------------|--------------|--------------|--------------|------|
| January     | 58           | 49           | 154          | 209          | 156          | 171          | 174  |
| February    | 88           | 57           | 166          | 163          | 103          | 143          | 115  |
| March       | 105          | 60           | 145          | 115          | 71           | 128          |      |
| April       | 114          | 69           | 130          | 150          | 162          | 99           |      |
| May         | 124          | 111          | 135          | 134          | 160          | 117          |      |
| June        | 98           | 120          | 130          | 112          | 124          | 118          |      |
| July        | 122          | 180          | 123          | 130          | 142          | 122          |      |
| August      | 102          | 160          | 137          | 109          | 153          | 118          |      |
| September   | 156          | 187          | 137          | 124          | 157          | 246          |      |
| October     | 95           | 140          | 158          | 183          | 88           | 106          |      |
| November    | 122          | 133          | 126          | 109          | 171          | 117          |      |
| December    | 56           | 57           | 103          | 29           | 55           | 152          |      |
| <b>Year</b> | <b>1 240</b> | <b>1 323</b> | <b>1 644</b> | <b>1 567</b> | <b>1 542</b> | <b>1 637</b> |      |

**Table 13 - Total number of insolvencies: 1999 to 2005**

| <b>Month</b> | <b>1999</b>  | <b>2000</b>  | <b>2001</b>  | <b>2002*</b> | <b>2003*</b> | <b>2004*</b> | <b>2005</b> |
|--------------|--------------|--------------|--------------|--------------|--------------|--------------|-------------|
| January      | 354          | 285          | 253          | 216          | 135          | 139          | 103         |
| February     | 372          | 445          | 306          | 273          | 134          | 139          |             |
| March        | 645          | 396          | 355          | 268          | 218          | 224          |             |
| April        | 475          | 402          | 318          | 315          | 250          | 204          |             |
| May          | 547          | 412          | 394          | 255          | 168          | 135          |             |
| June         | 703          | 411          | 325          | 251          | 246          | 162          |             |
| July         | 471          | 384          | 403          | 277          | 231          | 141          |             |
| August       | 604          | 499          | 374          | 275          | 250          | 125          |             |
| September    | 479          | 317          | 307          | 226          | 278          | 141          |             |
| October      | 525          | 388          | 334          | 256          | 264          | 122          |             |
| November     | 567          | 418          | 322          | 254          | 226          | 117          |             |
| December     | 271          | 326          | 236          | 160          | 200          | 114          |             |
| <b>Year</b>  | <b>6 013</b> | <b>4 683</b> | <b>3 926</b> | <b>3 027</b> | <b>2 600</b> | <b>1763</b>  |             |

\* Revised

**Table 14 – Percentage change between the current month and the corresponding month of the previous year regarding the number of liquidations**

|                         |   |   |   |   |
|-------------------------|---|---|---|---|
| <b>Actual estimates</b> | <b>Number of liquidations February 2004</b> | <b>Number of liquidations February 2005</b> | <b>% change between February 2004 and February 2005</b> | <b>Difference between February 2004 and February 2005</b> |
|                         | 298   | 296   | -0,7  | -2  |

**Table 15 – Percentage change between the current quarter and the previous quarter regarding the number of liquidations**

|                         |   |  |  |  |
|-------------------------|---|--|--|--|
| <b>Actual estimates</b> | <b>Number of liquidations September 2004 to November 2004</b> | <b>Number of liquidations December 2004 to February 2005</b> | <b>% change between September 2004 to November 2004 and December 2004 to February 2005</b> | <b>Difference between September 2004 to November 2004 and December 2004 to February 2005</b> |
|                         | 908   | 881  | -3,0   | -27  |

**Table 16 – Percentage change between the current month and the corresponding month of the previous year regarding the number of insolvencies**

|                         |  |  |   |   |
|-------------------------|--|--|---|---|
| <b>Actual estimates</b> | <b>Number of insolvencies January 2004</b> | <b>Number of insolvencies January 2005</b> | <b>% change between January 2004 and January 2005</b> | <b>Difference between January 2004 and January 2005</b> |
|                         | 139  | 103  | -25,9   | -36   |

**Table 17 - Percentage change between the current quarter and the previous quarter regarding the number of insolvencies**

|                         |   |   |   |   |
|-------------------------|---|---|---|---|
| <b>Actual estimates</b> | <b>Number of insolvencies August 2004 to October 2004</b> | <b>Number of insolvencies November 2004 to January 2005</b> | <b>% change between August 2004 to October 2004 and November 2004 to January 2005</b> | <b>Difference between August 2004 to October 2004 and November 2004 to January 2005</b> |
|                         | 388   | 334   | -13,9   | -54   |

## Explanatory notes

- Introduction**                    1        Statistics South Africa (Stats SA) collects administrative information on liquidations from the Registrar of Companies and Close Corporations, Department of Trade and Industry, while information on insolvencies is gathered from Notices of the Master of the Supreme Court which appears in the Government Gazette.
- 2        This statistical release reflects voluntary and compulsory liquidations of companies and close corporations and insolvencies of individuals and partnerships.
- Scope of the survey**            3        This survey covers -
- the total number of companies and close corporations which were liquidated; and
  - the total number of individuals and partnerships placed under final sequestration.
- Related publications**           4        Users may also wish to refer to the following publications which are available from Stats SA -
- *Bulletin of Statistics.*
  - *SA Statistics.*
- Unpublished statistics**        5        In some cases Stats SA can also make available statistics not included in standard publications. The statistics can be made available in one or more of the following ways: computer printout, CD or diskette. Generally a charge is made for providing unpublished statistics.
- Symbols and abbreviations**    6        CD            Compact Disc  
Stats SA      Statistics South Africa

## **Glossary**

|                               |  |
|-------------------------------|--|
| <b>Compulsory liquidation</b> | A compulsory liquidation takes place when the affairs of a company or close corporation are wound up by order of the court.  |
| <b>Insolvency</b>             | An insolvency refers to an individual or partnership which is unable to pay its debt and is placed under final sequestration. The number of insolvencies does not refer to the number of persons involved, as a partnership which is unable to pay its debt is regarded as one insolvency, irrespective of the number of partners. |
| <b>Liquidation</b>            | A liquidation refers to the winding-up of the affairs of a company or close corporation when liabilities exceed assets and it can be resolved by voluntary action or by an order of the court.   |
| <b>Voluntary liquidation</b>  | A voluntary liquidation takes place when a company or close corporation, by own choice, resolves to wind-up its affairs.   |

## General information

Stats SA publishes approximately 300 different statistical releases each year. It is not economically viable to produce them in more than one of South Africa's eleven official languages. Since the releases are used extensively, not only locally but also by international economic and social-scientific communities, Stats SA releases are published in English only.

Stats SA has copyright on this publication. Users may apply the information as they wish, provided that they acknowledge Stats SA as the source of the basic data wherever they process, apply, utilise, publish or distribute the data; and also that they specify that the relevant application and analysis (where applicable) result from their own processing of the data.

### Stats SA products

A complete set of Stats SA publications is available at the Stats SA Library and the following libraries:

National Library of South Africa, Pretoria Division  
National Library of South Africa, Cape Town Division  
Natal Society Library, Pietermaritzburg  
Library of Parliament, Cape Town  
Bloemfontein Public Library  
Johannesburg Public Library  
Eastern Cape Library Services, King William's Town  
Central Regional Library, Polokwane  
Central Reference Library, Nelspruit  
Central Reference Collection, Kimberley  
Central Reference Library, Mmabatho

Stats SA also provides a subscription service.

### Electronic services

A large range of data are available via on-line services, diskette, CD and computer printouts. For more details about our electronic data services, contact (012) 310 8600/8390/8351/4892/8964/8095.

You can visit us on the internet at: [www.statssa.gov.za](http://www.statssa.gov.za)

### Enquiries

Telephone number: (012) 310 8600/ 8390/ 8351/ 4892/ 8964/ 8095 (user information services)  
(012) 310 8220 (technical enquiries)  
(012) 310 8161 (orders)  
(012) 310 8490 (library)

Fax number: (012) 310 8332 (technical enquiries)

email: mpelim@statssa.gov.za (technical enquiries)  
info@statssa.gov.za (user information services)  
distribution@statssa.gov.za (orders)

Postal address: Private Bag X44, Pretoria, 0001

*Produced by Stats SA*