



Statistics of liquidations and insolvencies (preliminary) February 2004

Co-operation between Statistics South Africa (Stats SA), the citizens of the country, the private sector and government institutions is essential for a successful statistical system. Without continued co-operation and goodwill, the timely release of relevant and reliable official statistics will not be possible.

**Embargoed until:
1 April 2004
11:00**

Stats SA publishes approximately three hundred different releases each year. It is not economically viable to produce them in more than one of South Africa's eleven official languages. Since the releases are used extensively, not only locally, but also by international economic and social-scientific communities, Stats SA releases are published in English only.

These figures are issued as preliminary

Key figures as at the end of February 2004 regarding the number of liquidations

| Actual estimates | February 2004 | December 2003 to February 2004 | % change between February 2003 and February 2004 | % change between September 2003 to November 2003 and December 2003 to February 2004 | % change between January 2003 to February 2003 and January 2004 to February 2004 |
|-------------------------------|----------------------|---------------------------------------|---|--|---|
| Number of liquidations | 298 | 881 | -9,1 | -23,1 | -5,1 |

Key findings as at the end of February 2004 regarding the number of liquidations

Total number of liquidations decreases

The total number of liquidations recorded for February 2004 decreased by 9,1% (from 328 to 298) compared with February 2003. Furthermore, the total number of liquidations recorded for the first two months of 2004 decreased by 5,1% (from 723 to 686) compared with the first two months of 2003. The total number of liquidations recorded for the three months ended February 2004 decreased by 23,1% (from 1 146 to 881) compared with the previous three months.

The decrease of 9,1% in the total number of liquidations for February 2004 compared with February 2003 was due to a decrease of 41,5% (from 65 to 38) in compulsory liquidations and 1,1% (from 263 to 260) in voluntary liquidations.

The decrease of 23,1% in the total number of liquidations for three months ended February 2004 compared with the previous three months was due to a decrease of 51,0% (from 239 to 117) in compulsory liquidations and 15,8% (from 907 to 764) in voluntary liquidations.

Key figures as at the end of January 2004 regarding the number of insolvencies

| Actual estimates | January 2004 | November 2003 to January 2004 | % change between January 2003 and January 2004 | % change between August 2003 to October 2003 and November 2003 to January 2004 |
|-------------------------------|---------------------|--------------------------------------|---|---|
| Number of insolvencies | 120 | 447 | -9,1 | -32,4 |

Key findings as at the end of January 2004 regarding the number of insolvencies

Total number of insolvencies decreases

The total number of insolvencies recorded for the three months ended January 2004 decreased by 32,4% (from 661 to 447) compared with the previous three months. Furthermore, the total number of insolvencies for January 2004 decreased by 9,1% (from 132 to 120) compared with January 2003.

Figure 1 – Total number of liquidations

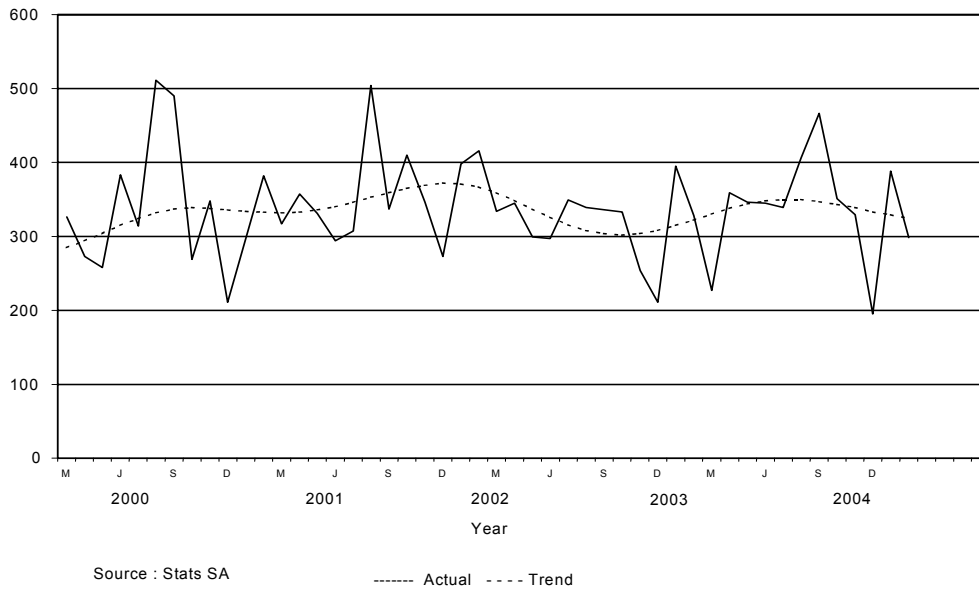
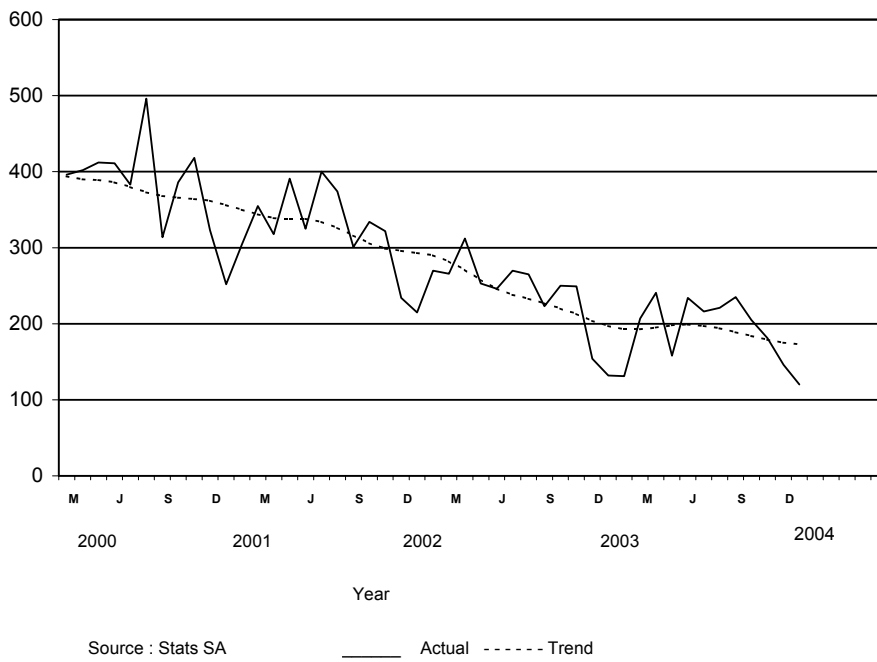


Figure 2 - Total number of insolvencies



pp
PJ Lehohla
Statistician-General

Contents

| | Page |
|--|------|
| Notes | 4 |
| Tables | |
| Table 1 Total number of liquidations according to industry | 5 |
| Table 2 Number of liquidations of companies according to industry | 5 |
| Table 3 Number of liquidations of close corporations according to industry | 5 |
| Table 4 Total number of liquidations: 1998 to 2004 | 6 |
| Table 5 Total number of compulsory liquidations: 1998 to 2004 | 6 |
| Table 6 Total number of voluntary liquidations: 1998 to 2004 | 6 |
| Table 7 Number of liquidations of companies: 1998 to 2004 | 7 |
| Table 8 Number of compulsory liquidations of companies: 1998 to 2004 | 7 |
| Table 9 Number of voluntary liquidations of companies: 1998 to 2004 | 7 |
| Table 10 Number of liquidations of close corporations: 1998 to 2004 | 8 |
| Table 11 Number of compulsory liquidations of close corporations: 1998 to 2004 | 8 |
| Table 12 Number of voluntary liquidations of close corporations: 1998 to 2004 | 8 |
| Table 13 Total number of insolvencies: 1998 to 2004 | 9 |
| Explanatory notes | 10 |
| Glossary | 11 |
| General information | 12 |

Notes

| Forthcoming issues | Issue | Expected release date |
|---------------------------|----------------|------------------------------|
| | March 2004 | 29 April 2004 |
| | April 2004 | 03 June 2004 |
| | May 2004 | 01 July 2004 |
| | June 2004 | 29 July 2004 |
| | July 2004 | 26 August 2004 |
| | August 2004 | 30 September 2004 |
| | September 2004 | 28 October 2004 |
| | October 2004 | 02 December 2004 |
| | November 2004 | 15 December 2004 |
| | December 2004 | 27 January 2005 |

Data source

Information on liquidations is obtained from the Registrar of Companies and Close Corporations, Department of Trade and Industry, while information on insolvencies is based on Notices of the Master of the Supreme Court which appears in the Government Gazette. The aggregated data in this release are used by the private and public sectors to measure economic performance and are also an important indicator of the scope of unpaid debt in South Africa.

Table 1- Total number of liquidations according to industry

| Industry | 2003 Total | | | February 2003 | | | January 2004 | | | February 2004 | | |
|---|-----------------|----------------|-------|-----------------|----------------|-------|------------------|----------------|-------|-----------------|----------------|-------|
| | Compul- sory | Volun- tary | Total | Compul- sory | Volun- tary | Total | Compu- l-sory | Volun- tary | Total | Compul- sory | Volun- tary | Total |
| Agriculture, hunting, forestry and fishing | 14 | 48 | 62 | 4 | 2 | 6 | 1 | 9 | 10 | 0 | 5 | 5 |
| Mining and quarrying | 13 | 30 | 43 | 2 | 0 | 2 | 0 | 3 | 3 | 1 | 0 | 1 |
| Manufacturing | 106 | 214 | 320 | 11 | 20 | 31 | 8 | 32 | 40 | 7 | 21 | 28 |
| Electricity, gas and water | 0 | 10 | 10 | 0 | 0 | 0 | 0 | 1 | 1 | 0 | 0 | 0 |
| Construction | 80 | 235 | 315 | 6 | 16 | 22 | 5 | 26 | 31 | 4 | 14 | 18 |
| Wholesale and retail trade, catering and accommodation | 255 | 1 021 | 1 276 | 18 | 76 | 94 | 12 | 102 | 114 | 7 | 86 | 93 |
| Transport, storage and communication | 30 | 106 | 136 | 2 | 4 | 6 | 1 | 16 | 17 | 4 | 6 | 10 |
| Financing, insurance, real estate and business services | 274 | 1 246 | 1 520 | 17 | 121 | 138 | 7 | 110 | 117 | 15 | 91 | 106 |
| Community, social and personal services | 85 | 319 | 404 | 5 | 24 | 29 | 8 | 47 | 55 | | 37 | 37 |
| Total number of liquidations | 857 | 3 229 | 4 086 | 65 | 263 | 328 | 42 | 346 | 388 | 38 | 260 | 298 |

Table 2 – Number of liquidations of companies according to industry

| Industry | 2003 Total | | | February 2003 | | | January 2004 | | | February 2004 | | |
|--|-----------------|----------------|-------|-----------------|----------------|-------|------------------|----------------|-------|------------------|----------------|-------|
| | Compul- sory | Volun- tary | Total | Compul- sory | Volun- tary | Total | Compul- -sory | Volun- tary | Total | Compul- -sory | Volun- tary | Total |
| Agriculture, hunting, forestry and fishing | 7 | 16 | 23 | 2 | 1 | 3 | 0 | 5 | 5 | 0 | 2 | 2 |
| Mining and quarrying | 7 | 10 | 17 | 1 | 0 | 1 | 0 | 1 | 1 | 0 | 0 | 0 |
| Manufacturing | 49 | 115 | 164 | 4 | 14 | 18 | 1 | 18 | 19 | 2 | 9 | 11 |
| Electricity, gas and water | 0 | 4 | 4 | 0 | 0 | 0 | 0 | 0 | 0 | 0 | 0 | 0 |
| Construction | 13 | 65 | 78 | 0 | 8 | 8 | 1 | 6 | 7 | 1 | 1 | 2 |
| Wholesale and retail trade, catering and accommodation | 126 | 459 | 585 | 6 | 41 | 47 | 5 | 44 | 49 | 1 | 36 | 37 |
| Transport, storage and communication | 17 | 31 | 48 | 0 | 2 | 2 | 0 | 7 | 7 | 1 | 2 | 3 |
| Financing, insurance, real estate | 142 | 737 | 879 | 11 | 75 | 86 | 2 | 52 | 54 | 10 | 37 | 47 |
| Community, social and personal services | 62 | 250 | 312 | 4 | 19 | 23 | 7 | 42 | 49 | | 30 | 30 |
| Total number of liquidations of close corporations | 423 | 1 687 | 2 110 | 28 | 160 | 188 | 16 | 175 | 191 | 15 | 117 | 132 |

Table 3 – Number of liquidations of close corporations according to industry

| Industry | 2003 Total | | | February 2003 | | | January 2004 | | | February 2004 | | |
|--|-----------------|----------------|-------|-----------------|----------------|-------|-----------------|----------------|-------|------------------|----------------|-------|
| | Compul- sory | Volun- tary | Total | Compul- sory | Volun- tary | Total | Compul- sory | Volun- tary | Total | Compul- -sory | Volun- tary | Total |
| Agriculture, hunting, forestry and fishing | 7 | 32 | 39 | 2 | 1 | 3 | 1 | 4 | 5 | 0 | 3 | 3 |
| Mining and quarrying | 6 | 20 | 26 | 1 | 0 | 1 | 0 | 2 | 2 | 1 | 0 | 1 |
| Manufacturing | 57 | 99 | 156 | 7 | 6 | 13 | 7 | 14 | 21 | 5 | 12 | 17 |
| Electricity, gas and water | 0 | 6 | 6 | 0 | 0 | 0 | 0 | 1 | 1 | 0 | 0 | 0 |
| Construction | 67 | 170 | 237 | 6 | 8 | 14 | 4 | 20 | 24 | 3 | 13 | 16 |
| Wholesale and retail trade, catering and accommodation | 129 | 562 | 691 | 12 | 35 | 47 | 7 | 58 | 65 | 6 | 50 | 56 |
| Transport, storage and communication | 13 | 75 | 88 | 2 | 2 | 4 | 1 | 9 | 10 | 3 | 4 | 7 |
| Financing, insurance, real estate | 132 | 509 | 641 | 6 | 46 | 52 | 5 | 58 | 63 | 5 | 54 | 59 |
| Community, social and personal Services | 23 | 69 | 92 | 1 | 5 | 6 | 1 | 5 | 6 | 0 | 7 | 7 |
| Total number of liquidations of close corporations | 434 | 1 542 | 1 976 | 37 | 103 | 140 | 26 | 171 | 197 | 23 | 143 | 166 |

Table 4 - Total number of liquidations: 1998 to 2004

| Month | 1998 | 1999 | 2000 | 2001 | 2002 | 2003 | 2004 |
|-------------|--------------|--------------|--------------|--------------|--------------|--------------|------|
| January | 162 | 367 | 193 | 298 | 398 | 395 | 388 |
| February | 234 | 367 | 229 | 382 | 416 | 328 | 298 |
| March | 253 | 332 | 326 | 317 | 334 | 227 | |
| April | 320 | 370 | 273 | 357 | 345 | 359 | |
| May | 291 | 379 | 258 | 331 | 299 | 346 | |
| June | 423 | 297 | 383 | 294 | 297 | 345 | |
| July | 348 | 333 | 314 | 307 | 349 | 339 | |
| August | 347 | 326 | 511 | 504 | 339 | 406 | |
| September | 307 | 421 | 490 | 337 | 336 | 466 | |
| October | 334 | 277 | 269 | 410 | 333 | 351 | |
| November | 476 | 341 | 348 | 346 | 254 | 329 | |
| December | 271 | 202 | 211 | 273 | 211 | 195 | |
| Year | 3 766 | 4 012 | 3 805 | 4 156 | 3 911 | 4 086 | |

Table 5 - Total number of compulsory liquidations: 1998 to 2004

| Month | 1998 | 1999 | 2000 | 2001 | 2002 | 2003 | 2004 |
|-------------|--------------|--------------|--------------|--------------|------------|------------|------|
| January | 88 | 244 | 85 | 71 | 78 | 76 | 42 |
| February | 130 | 177 | 78 | 114 | 87 | 65 | 38 |
| March | 122 | 132 | 172 | 68 | 68 | 46 | |
| April | 150 | 177 | 125 | 125 | 87 | 63 | |
| May | 189 | 186 | 57 | 81 | 60 | 52 | |
| June | 240 | 131 | 190 | 88 | 69 | 74 | |
| July | 221 | 140 | 77 | 81 | 69 | 85 | |
| August | 218 | 132 | 247 | 256 | 74 | 120 | |
| September | 192 | 169 | 241 | 118 | 70 | 109 | |
| October | 226 | 102 | 44 | 137 | 54 | 70 | |
| November | 275 | 159 | 128 | 74 | 64 | 60 | |
| December | 150 | 95 | 71 | 71 | 45 | 37 | |
| Year | 2 201 | 1 844 | 1 515 | 1 284 | 825 | 857 | |

Table 6 - Total number of voluntary liquidations: 1998 to 2004

| Month | 1998 | 1999 | 2000 | 2001 | 2002 | 2003 | 2004 |
|-------------|--------------|--------------|--------------|--------------|--------------|--------------|------|
| January | 74 | 123 | 108 | 227 | 320 | 319 | 346 |
| February | 104 | 190 | 151 | 268 | 329 | 263 | 260 |
| March | 131 | 200 | 154 | 249 | 266 | 181 | |
| April | 170 | 193 | 148 | 232 | 258 | 296 | |
| May | 102 | 193 | 201 | 250 | 239 | 294 | |
| June | 183 | 166 | 193 | 206 | 228 | 271 | |
| July | 127 | 193 | 237 | 226 | 280 | 254 | |
| August | 129 | 194 | 264 | 248 | 265 | 286 | |
| September | 115 | 252 | 249 | 219 | 266 | 357 | |
| October | 108 | 175 | 225 | 273 | 279 | 281 | |
| November | 201 | 182 | 220 | 272 | 190 | 269 | |
| December | 121 | 107 | 140 | 202 | 166 | 158 | |
| Year | 1 565 | 2 168 | 2 290 | 2 872 | 3 086 | 3 229 | |

Table 7 - Number of liquidations of companies: 1998 to 2004

| Month | 1998 | 1999 | 2000 | 2001 | 2002 | 2003 | 2004 |
|-------------|--------------|--------------|--------------|--------------|--------------|--------------|------|
| January | 86 | 134 | 91 | 107 | 130 | 200 | 191 |
| February | 99 | 198 | 151 | 119 | 212 | 188 | 132 |
| March | 108 | 165 | 241 | 132 | 183 | 127 | |
| April | 171 | 166 | 166 | 129 | 161 | 151 | |
| May | 125 | 142 | 130 | 156 | 117 | 162 | |
| June | 202 | 114 | 173 | 129 | 145 | 178 | |
| July | 133 | 114 | 89 | 144 | 183 | 141 | |
| August | 151 | 169 | 152 | 149 | 173 | 202 | |
| September | 116 | 157 | 93 | 136 | 164 | 260 | |
| October | 106 | 145 | 106 | 166 | 118 | 235 | |
| November | 170 | 136 | 112 | 181 | 106 | 136 | |
| December | 166 | 98 | 122 | 123 | 166 | 130 | |
| Year | 1 633 | 1 738 | 1 626 | 1 671 | 1 858 | 2 110 | |

Table 8 - Number of compulsory liquidations of companies: 1998 to 2004

| Month | 1998 | 1999 | 2000 | 2001 | 2002 | 2003 | 2004 |
|-------------|------------|------------|------------|------------|------------|------------|------|
| January | 51 | 69 | 32 | 34 | 19 | 37 | 16 |
| February | 53 | 96 | 57 | 17 | 46 | 28 | 15 |
| March | 49 | 70 | 147 | 28 | 32 | 17 | |
| April | 43 | 87 | 87 | 27 | 53 | 17 | |
| May | 73 | 73 | 40 | 41 | 12 | 28 | |
| June | 86 | 46 | 100 | 53 | 29 | 31 | |
| July | 70 | 43 | 32 | 41 | 33 | 29 | |
| August | 103 | 77 | 48 | 38 | 17 | 69 | |
| September | 59 | 61 | 31 | 54 | 22 | 60 | |
| October | 66 | 65 | 21 | 51 | 22 | 42 | |
| November | 54 | 76 | 25 | 35 | 25 | 38 | |
| December | 82 | 47 | 39 | 24 | 29 | 27 | |
| Year | 789 | 810 | 659 | 443 | 339 | 423 | |

Table 9 - Number of voluntary liquidations of companies: 1998 to 2004

| Month | 1998 | 1999 | 2000 | 2001 | 2002 | 2003 | 2004 |
|-------------|------------|------------|------------|--------------|--------------|--------------|------|
| January | 35 | 65 | 59 | 73 | 111 | 163 | 175 |
| February | 46 | 102 | 94 | 102 | 166 | 160 | 117 |
| March | 59 | 95 | 94 | 104 | 151 | 110 | |
| April | 128 | 79 | 79 | 102 | 108 | 134 | |
| May | 52 | 69 | 90 | 115 | 105 | 134 | |
| June | 116 | 68 | 73 | 76 | 116 | 147 | |
| July | 63 | 71 | 57 | 103 | 150 | 112 | |
| August | 48 | 92 | 104 | 111 | 156 | 133 | |
| September | 57 | 96 | 62 | 82 | 142 | 200 | |
| October | 40 | 80 | 85 | 115 | 96 | 193 | |
| November | 116 | 60 | 87 | 146 | 81 | 98 | |
| December | 84 | 51 | 83 | 99 | 137 | 103 | |
| Year | 844 | 928 | 967 | 1 228 | 1 519 | 1 687 | |

Table 10 - Number of liquidations of close corporations: 1998 to 2004

| Month | 1998 | 1999 | 2000 | 2001 | 2002 | 2003 | 2004 |
|-------------|--------------|--------------|--------------|--------------|--------------|--------------|------|
| January | 76 | 233 | 102 | 191 | 268 | 195 | 197 |
| February | 135 | 169 | 78 | 263 | 204 | 140 | 166 |
| March | 145 | 167 | 85 | 185 | 151 | 100 | |
| April | 149 | 204 | 107 | 228 | 184 | 208 | |
| May | 166 | 237 | 128 | 175 | 182 | 184 | |
| June | 221 | 183 | 210 | 165 | 152 | 167 | |
| July | 215 | 219 | 225 | 163 | 166 | 198 | |
| August | 196 | 157 | 359 | 355 | 166 | 204 | |
| September | 191 | 264 | 397 | 201 | 172 | 206 | |
| October | 228 | 132 | 163 | 244 | 215 | 116 | |
| November | 306 | 205 | 236 | 165 | 148 | 193 | |
| December | 105 | 104 | 89 | 150 | 45 | 65 | |
| Year | 2 133 | 2 274 | 2 179 | 2 485 | 2 053 | 1 976 | |

Table 11 - Number of compulsory liquidations of close corporations: 1998 to 2004

| Month | 1998 | 1999 | 2000 | 2001 | 2002 | 2003 | 2004 |
|-------------|--------------|--------------|------------|------------|------------|------------|------|
| January | 37 | 175 | 53 | 37 | 59 | 39 | 26 |
| February | 77 | 81 | 21 | 97 | 41 | 37 | 23 |
| March | 73 | 62 | 25 | 40 | 36 | 29 | |
| April | 107 | 90 | 38 | 98 | 34 | 46 | |
| May | 116 | 113 | 17 | 40 | 48 | 24 | |
| June | 154 | 85 | 90 | 35 | 40 | 43 | |
| July | 151 | 97 | 45 | 40 | 36 | 56 | |
| August | 115 | 55 | 199 | 218 | 57 | 51 | |
| September | 133 | 108 | 210 | 64 | 48 | 49 | |
| October | 160 | 37 | 23 | 86 | 32 | 28 | |
| November | 221 | 83 | 103 | 39 | 39 | 22 | |
| December | 68 | 48 | 32 | 47 | 16 | 10 | |
| Year | 1 412 | 1 034 | 856 | 841 | 486 | 434 | |

Table 12 - Number of voluntary liquidations of close corporations: 1998 to 2004

| Month | 1998 | 1999 | 2000 | 2001 | 2002 | 2003 | 2004 |
|-------------|------------|--------------|--------------|--------------|--------------|--------------|------|
| January | 39 | 58 | 49 | 154 | 209 | 156 | 171 |
| February | 58 | 88 | 57 | 166 | 163 | 103 | 143 |
| March | 72 | 105 | 60 | 145 | 115 | 71 | |
| April | 42 | 114 | 69 | 130 | 150 | 162 | |
| May | 50 | 124 | 111 | 135 | 134 | 160 | |
| June | 67 | 98 | 120 | 130 | 112 | 124 | |
| July | 64 | 122 | 180 | 123 | 130 | 142 | |
| August | 81 | 102 | 160 | 137 | 109 | 153 | |
| September | 58 | 156 | 187 | 137 | 124 | 157 | |
| October | 68 | 95 | 140 | 158 | 183 | 88 | |
| November | 85 | 122 | 133 | 126 | 109 | 171 | |
| December | 37 | 56 | 57 | 103 | 29 | 55 | |
| Year | 721 | 1 240 | 1 323 | 1 644 | 1 567 | 1 542 | |

Table 13 - Total number of insolvencies: 1998 to 2004

| Month | 1998 | 1999 | 2000 | 2001 | 2002 | 2003 | 2004 |
|--------------|--------------|--------------|--------------|--------------|--------------|--------------|-------------|
| January | 203 | 354 | 285 | 252 | 215 | 132 | 120 |
| February | 259 | 372 | 445 | 304 | 270 | 131 | |
| March | 418 | 645 | 396 | 355 | 266 | 207 | |
| April | 345 | 475 | 402 | 318 | 312 | 241 | |
| May | 278 | 547 | 412 | 391 | 253 | 158 | |
| June | 339 | 703 | 411 | 325 | 246 | 234 | |
| July | 326 | 471 | 383 | 400 | 270 | 216 | |
| August | 378 | 604 | 496 | 374 | 265 | 221 | |
| September | 367 | 479 | 314 | 301 | 223 | 235 | |
| October | 416 | 525 | 386 | 334 | 250 | 205 | |
| November | 507 | 567 | 418 | 322 | 249 | 181 | |
| December | 453 | 271 | 323 | 234 | 154 | 146 | |
| Year | 4 289 | 6 013 | 4 671 | 3 910 | 2 973 | 2 307 | |

Explanatory notes

- Introduction** 1 Statistics South Africa (Stats SA) collects administrative information on liquidations from the Registrar of Companies and Close Corporations, Department of Trade and Industry, while information on insolvencies is gathered from Notices of the Master of the Supreme Court which appears in the Government Gazette.
- 2 This statistical release reflects voluntary and compulsory liquidations of companies and close corporations and insolvencies of individuals and partnerships.
- Scope of the survey** 3 This survey covers -
- the total number of companies and close corporations which were liquidated; and
 - the total number of individuals and partnerships placed under final sequestration.
- Related publications** 4 Users may also wish to refer to the following publications which are available from Stats SA -
- *Bulletin of Statistics.*
 - *SA Statistics.*
- Unpublished statistics** 5 In some cases Stats SA can also make available statistics which are not published. The statistics can be made available in one or more of the following ways: computer printout, CD or diskette. Generally a charge is made for providing unpublished statistics.
- Symbols and abbreviations** 6 CD Compact Disc
Stats SA Statistics South Africa

Glossary

| | |
|-------------------------------|--|
| Compulsory liquidation | A compulsory liquidation takes place when the affairs of a company or close corporation are wound up by order of the court. |
| Insolvency | An insolvency refers to an individual or partnership which is unable to pay its debt and is placed under final sequestration. The number of insolvencies does not refer to the number of persons involved, as a partnership which is unable to pay its debt is regarded as one insolvency, irrespective of the number of partners. |
| Liquidation | A liquidation refers to the winding-up of the affairs of a company or close corporation when liabilities exceed assets and it can be resolved by voluntary action or by an order of the court. |
| Voluntary liquidation | A voluntary liquidation takes place when a company or close corporation, by own choice, resolves to wind-up its affairs. |

General information

Stats SA publishes approximately 300 different statistical releases each year. It is not economically viable to produce them in more than one of South Africa's eleven official languages. Since the releases are used extensively, not only locally but also by international economic and social-scientific communities, Stats SA releases are published in English only.

Stats SA has copyright on this publication. Users may apply the information as they wish, provided that they acknowledge Stats SA as the source of the basic data wherever they process, apply, utilise, publish or distribute the data; and also that they specify that the relevant application and analysis (where applicable) result from their own processing of the data.

Stats SA products

A complete set of Stats SA publications is available at the Stats SA Library and the following libraries:

National Library of South Africa, Pretoria Division
National Library of South Africa, Cape Town Division
Natal Society Library, Pietermaritzburg
Library of Parliament, Cape Town
Bloemfontein Public Library
Johannesburg Public Library
Eastern Cape Library Services, King William's Town
Central Regional Library, Polokwane
Central Reference Library, Nelspruit
Central Reference Collection, Kimberley
Central Reference Library, Mmabatho

Stats SA also provides a subscription service.

Electronic services

A large range of data are available via on-line services, diskette, CD and computer printouts. For more details about our electronic data services, contact (012) 310 8600/8390/8351/4892/8964/8095.

You can visit us on the Internet at: www.statssa.gov.za

Enquiries

Telephone number: (012) 310 8600/8390/8351/4892/8964/8095 (user information services)
(012) 310 8220 (technical enquiries)
(012) 310 8161 (orders)
(012) 310-8490 (library)

Fax number: (012) 310 8332 (technical enquiries)

Email: AnnieG@statssa.gov.za

Postal address: Private Bag X44, Pretoria, 0001

Produced by Stats SA