



REPUBLIEK VAN SUID-AFRIKA
REPUBLIC OF SOUTH AFRICA

SENTRALE STATISTIEKDIENS CENTRAL STATISTICAL SERVICE

Steynsarkade
Steyn's Arcade
Schoemanstraat 274
274 Schoeman Street
Privaatsak X44
Private Bag
PRETORIA
0001
Tel.: 3108-911 (012)
Teleks: 320450, 320523
Telex: 322418, 320173
Fax: 3226325 (012)
3220463



STREEKKANTORE REGIONAL OFFICES

DURBAN
Tel.: 305-3904
KAAPSTAD
CAPE TOWN
Tel.: 461-2098
461-6940 (021)
PORT ELIZABETH
Tel.: 52-3801/2 (041)
NELSPRUIT
Tel.: 5-2455/6 (01311)
KIMBERLEY
Tel.: 3-3965/6 (0531)
KEMPTON PARK
Tel.: 394-3420/1 (011)
PIETERSBURG
Tel.: 7-1609 (01521)
KLERKSDORP
Tel.: 24008
24324 (018)
BLOEMFONTEIN
Tel.: 477766/7 (051)
308389

STATISTIESE NUUSBERIG

STATISTICAL NEWS RELEASE

P0043

STATISTIEKE VAN LIKWIDASIES EN INSOLVENSIES:
FEBRUARIE 1989

STATISTICS OF LIQUIDATIONS AND INSOLVENCIES:
FEBRUARY 1989

3 APRIL 1989

1. OPSOMMING

Die totale getal likwidasies vir die drie maande tot Februarie 1989 toon 'n afname van 19,8% vergeleke met die voorafgaande drie maande, en 'n afname van 19,0% vergeleke met die ooreenstemmende drie maande van die vorige jaar.

Die totale getal insolvensies vir die drie maande tot Januarie 1989 toon 'n afname van 13,6% vergeleke met die voorafgaande drie maande, en 'n afname van 33,5% vergeleke met die ooreenstemmende drie maande van die vorige jaar.

1. SUMMARY

The total number of liquidations for the three months up to February 1989 shows a decrease of 19,8% compared with the previous three months, and a decrease of 19,0% compared with the corresponding three months of the previous year.

The total number of insolvencies for the three months up to January 1989 shows a decrease of 13,6% compared with the previous three months, and a decrease of 33,5% compared with the corresponding three months of the previous year.

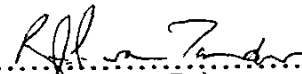
Tydperk Period	Totale getal Total number		Persentasieverandering Percentage change	
	Likwidasies Liquidations	Insolvensies Insolvencies	Likwidasies Liquidations	Insolvensies Insolvencies
Des./Dec. 1988 - Febr./Feb. 1989	324		- 19,0	
Des./Dec. 1987 - Febr./Feb. 1988	400			
Des./Dec. 1988 - Febr./Feb. 1989	324		- 19,8	
Sept. 1988 - Nov. 1988	404			
Nov. 1988 - Jan. 1989		515		- 33,5
Nov. 1987 - Jan. 1988		774		
Nov. 1988 - Jan. 1989		515		- 13,6
Aug. 1988 - Okt./Oct. 1988		596		

2. OPPERKINGS

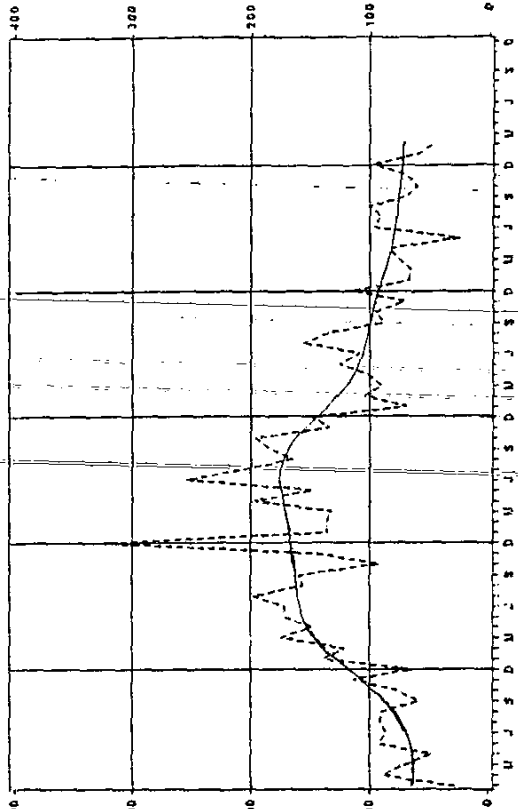
- 2.1 Die gegewens vir likwidasies het betrekking op die totale getal maatskappye en beslote korporasies wat finaal gelikwideer is. Hierdie gegewens word verkry vanaf die Registrateur van Maatskappye en Beslote Korporasies.
- 2.2 Insolvensies het slegs betrekking op private persone en vennootskappe wat finaal gesekwestreer is; dit verteenwoordig nie die getal persone betrokke nie, aangesien 'n vennootskap as een insolvensie gereken word, ongeag die getal vennote. Die syfers is gebaseer op gegewens verkry uit die Meesters se Kennisgewings wat gereeld in die Staatskoerant verskyn.

2. NOTES

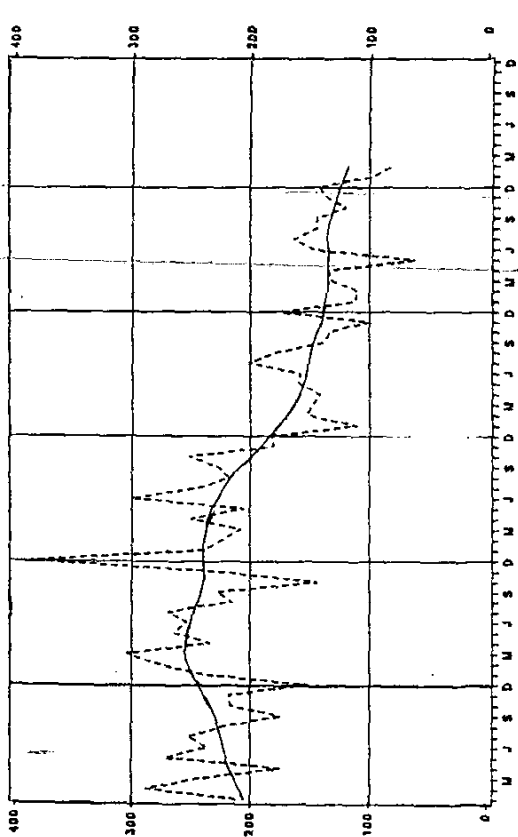
- 2.1 The figures for liquidations relate to the total number of companies and close corporations which are placed under final liquidation. This information is obtained from the Registrar of Companies and Close Corporations.
- 2.2 Insolvencies relate to private persons and partnerships which are placed under final sequestration; they do not represent the number of persons involved, as a partnership is counted as one insolvency, irrespective of the number of partners. The figures are based on information extracted from the Masters' Notices published currently in the Government Gazette.


 HOOF: SENTRALE STATISTIEKDIENS
 HEAD: CENTRAL STATISTICAL SERVICE

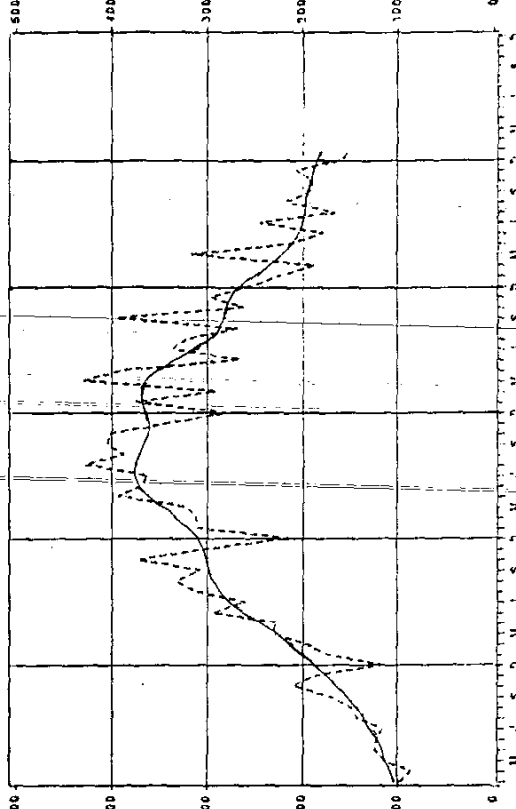
LIQUIDATIONS
COMPLUSORY
NUMBER



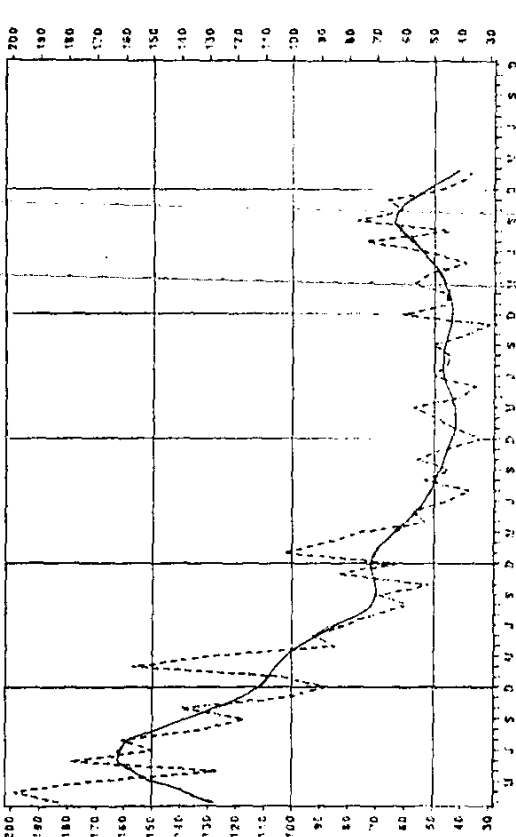
LIQUIDASIES
VERPLIGTS
GETAL



INSOLVENCIES
TOTAL
NUMBER



INSOLVENSIES
TOTAAL
GETAL



LIQUIDATIONS
TOTAL
NUMBER

LIQUIDATIONS
VOLUNTARY
NUMBER

TABEL 1 - TOTALE GETAL LIKWIDASIES

JAAR YEAR	JAN JAN	FEBR FEB	MRT MAR	APRIL APRIL	MEI MAY	JUNIE JUNE	JULIE JULY	AUG AUG	SEPT SEPT	OKT OCT	NOV NOV	DES DEC	JAAR-TOT YEAR-TOT	MAAND-GEH MONTH-AVE
1982	148	195	175	155	138	131	193	95	192	168	201	176	1 957	163
1983	193	161	216	249	206	188	230	211	156	169	171	125	2 275	190
1984	213	239	244	176	273	237	253	224	176	213	218	154	2 675	223
1985	244	279	305	235	265	254	270	216	229	144	232	388	3 061	255
1986	240	225	209	251	206	301	244	219	229	253	181	183	2 741	228
1987	112	154	148	143	161	159	203	179	139	134	101	176	1 809	151
1988	113	111	133	136	63	149	165	145	146	121	137	144	1 563	130
1989	99	81												

TABEL 1 - TOTAL NUMBER OF LIQUIDATIONS

JAAR YEAR	JAN JAN	FEBR FEB	MRT MAR	APRIL APRIL	MEI MAY	JUNIE JUNE	JULIE JULY	AUG AUG	SEPT SEPT	OKT OCT	NOV NOV	DES DEC	JAAR-TOT YEAR-TOT	MAAND-GEH MONTH-AVE
1982	148	195	175	155	138	131	193	95	192	168	201	176	1 957	163
1983	193	161	216	249	206	188	230	211	156	169	171	125	2 275	190
1984	213	239	244	176	273	237	253	224	176	213	218	154	2 675	223
1985	244	279	305	235	265	254	270	216	229	144	232	388	3 061	255
1986	240	225	209	251	206	301	244	219	229	253	181	183	2 741	228
1987	112	154	148	143	161	159	203	179	139	134	101	176	1 809	151
1988	113	111	133	136	63	149	165	145	146	121	137	144	1 563	130
1989	99	81												

TABEL 2 - GETAL VERPLIGTE LIKWIDASIES

JAAR YEAR	JAN JAN	FEBR FEB	MRT MAR	APRIL APRIL	MEI MAY	JUNIE JUNE	JULIE JULY	AUG AUG	SEPT SEPT	OKT OCT	NOV NOV	DES DEC	JAAR-TOT YEAR-TOT	MAAND-GEH MONTH-AVE
1982	46	43	20	46	57	28	112	18	91	64	56	34	615	51
1983	83	49	92	67	105	109	93	98	43	90	62	56	947	79
1984	30	90	71	49	94	87	92	92	59	78	115	66	923	77
1985	140	122	175	150	172	173	199	157	160	93	148	325	2 014	168
1986	137	137	133	198	149	255	207	166	185	197	135	150	2 049	170
1987	70	105	91	103	126	109	158	135	89	96	71	115	1 268	106
1988	68	66	76	85	25	97	91	101	69	60	71	97	906	76
1989	60	46												

TABEL 2 - NUMBER OF COMPULSORY LIQUIDATIONS

JAAR YEAR	JAN JAN	FEBR FEB	MRT MAR	APRIL APRIL	MEI MAY	JUNIE JUNE	JULIE JULY	AUG AUG	SEPT SEPT	OKT OCT	NOV NOV	DES DEC	JAAR-TOT YEAR-TOT	MAAND-GEH MONTH-AVE
1982	46	43	20	46	57	28	112	18	91	64	56	34	615	51
1983	83	49	92	67	105	109	93	98	43	90	62	56	947	79
1984	30	90	71	49	94	87	92	92	59	78	115	66	923	77
1985	140	122	175	150	172	173	199	157	160	93	148	325	2 014	168
1986	137	137	133	198	149	255	207	166	185	197	135	150	2 049	170
1987	70	105	91	103	126	109	158	135	89	96	71	115	1 268	106
1988	68	66	76	85	25	97	91	101	69	60	71	97	906	76
1989	60	46												

TABEL 3 - GETAL VRYWILLIGE LIKWIDASIES

JAAR YEAR	JAN JAN	FEBR FEB	MRT MAR	APRIL APRIL	MEI MAY	JUNIE JUNE	JULIE JULY	AUG AUG	SEPT SEPT	OKT OCT	NOV NOV	DES DEC	JAAR-TOT YEAR-TOT	MAAND-GEH MONTH-AVE
1982	102	142	155	109	81	103	81	77	101	104	145	142	1 342	112
1983	110	112	124	182	101	79	137	113	113	79	109	69	1 328	111
1984	183	199	173	127	179	150	161	132	117	140	103	88	1 752	146
1985	104	157	130	85	93	81	71	59	69	51	84	63	1 047	87
1986	103	88	76	53	57	46	37	53	44	56	46	33	692	58
1987	42	49	57	40	35	50	45	44	50	38	30	61	541	45
1988	45	45	57	51	38	52	74	44	77	61	66	47	657	55
1989	39	35												

TABEL 3 - NUMBER OF VOLUNTARY LIQUIDATIONS

JAAR YEAR	JAN JAN	FEBR FEB	MRT MAR	APRIL APRIL	MEI MAY	JUNIE JUNE	JULIE JULY	AUG AUG	SEPT SEPT	OKT OCT	NOV NOV	DES DEC	JAAR-TOT YEAR-TOT	MAAND-GEH MONTH-AVE
1982	102	142	155	109	81	103	81	77	101	104	145	142	1 342	112
1983	110	112	124	182	101	79	137	113	113	79	109	69	1 328	111
1984	183	199	173	127	179	150	161	132	117	140	103	88	1 752	146
1985	104	157	130	85	93	81	71	59	69	51	84	63	1 047	87
1986	103	88	76	53	57	46	37	53	44	56	46	33	692	58
1987	42	49	57	40	35	50	45	44	50	38	30	61	541	45
1988	45	45	57	51	38	52	74	44	77	61	66	47	657	55
1989	39	35												

↙ Weens verskerpte kontrole sedert Oktober 1985 deur die Registrateur van Maatskappye en Beslote Korporasies ten opsigte van die akkuraatheid van die name van maatskappye wat deur 'n hofbevel gelikwideer word, is sommige likwidasies nie getoon in die maand waarin dit plaasgevind het nie, maar wanneer die gewysigde hofbevel ontvang is.

↙ As a result of more intense control by the Registrar of Companies and Close Corporations since October 1985 on the accuracy of the names of the companies, which were liquidated by court order, some of the liquidations were not shown in the month in which they took place, but when the revised court order had been received.

TABLE 4 - GETAL LIKWIDASIES

TABLE 4 - NUMBER OF LIQUIDATIONS

Bedryf	1988			1989			1988			Industry
	Februarie/February			Januarie/January			Februarie/February			
	Totaal Total	Verplig Compul- sory	Vry- willig Volun- tary	Totaal Total	Verplig Compul- sory	Vry- willig Volun- tary	Totaal Total	Verplig Compul- sory	Vry- willig Volun- tary	
1. Landbou, jag, bosbou en visserij	3	1	2	2	-	2	1	-	1	1. Agriculture, hunting, forestry and fishery
2. Hynwese en steengroef-werk	1	1	-	1	1	-	1	1	-	2. Mining and quarrying
3. Fabriekswese	13	10	3	13	10	3	9	7	2	3. Manufacturing
4. Elektriesiteit, gas en water	-	-	-	-	-	-	1	1	-	4. Electricity, gas and water
5. Konstruksie	6	6	-	12	9	3	14	12	2	5. Construction
6. Groot- en kleinhandel, verversings- en akkommodasiedienste	23	18	5	24	22	2	28	25	3	6. Wholesale and retail trade, catering and accommodation services
7. Vervoer, obergang en kommunikasie	2	2	-	-	-	-	7	-	7	7. Transport, storage and communication
8. Finansiering, versekering, vaste eiendom en besigheidsdienste	32	7	25	42	14	28	48	18	30	8. Financing, insurance, real estate and business services
9. Gemeenskaps-, maatskaplike en persoonlike dienste	1	1	-	5	4	1	2	2	-	9. Community, social and personal services
TOTAAL	81	46	35	99	60	39	111	66	45	TOTAL

TABLE 5 - TOTALE GETAL INSOLVENSIES

TABLE 5 - TOTAL NUMBER OF INSOLVENCIES

JAAR YEAR	JAN JAN	FEBR FEB	MRT MAR	APRIL APRIL	MAY MAY	JUNE JUNE	JULIE JULY	AUG AUG	SEPT SEPT	OKT OCT	NOV NOV	DES DEC	JAAR-TOT YEAR-TOT	MAAND-GEM MONTH-AVE
1982	58	60	65	54	81	70	104	120	89	103	115	79	998	83
1983	92	98	120	95	94	120	91	119	112	73	107	80	1 201	100
1984	98	87	114	125	122	116	143	149	171	209	186	117	1 637	136
1985	173	197	232	227	294	260	313	332	308	373	298	214	3 221	268
1986	311	312	321	394	368	363	428	388	404	402	340	279	4 310	359
1987	375	291	429	390	265	336	322	268	395	262	296	254	3 883	324
1988	224	187	316	214	178	245	166	217	191	188	207	158	2 491	208
1989	150	2/											2/ Preliminary	

2/ Voorlopig