



**Statistics
South Africa**

Preferred supplier of quality statistics



Statistical release

P0043

Statistics of liquidations and insolvencies (Preliminary)

December 2006

**Embargoed until:
25 January 2007
09:30**

Enquiries:

User Information Services
Tel.: (012) 310 8600 / 4892 / 8390

Forthcoming issue:

January 2007

Expected release date

1 March 2007

Statistics South Africa • Mbalo-mbalo ya Afrika Tshipembe • Tinhlayo-tiko ta Afrika-Dzonga • Divalopalo tsa Aforika Borwa • Ezezibalo zaseNingizimu Afrika
Divalopalo tša Afrika Borwa • Divalopalo tsa Afrika Borwa • Ubalo lwaseMzantsi Afrika • Telubalo eNingizimu Afrika • iNanimbalo leSewula Afrika • Statistiek Suid-Afrika

| Contents | Page |
|---|-------------|
| Key findings for December 2006 regarding liquidations | 2 |
| Key findings for November 2006 regarding insolvencies | 3 |
| Tables | |
| Table 1 Total number of liquidations according to industry | 5 |
| Table 2 Number of liquidations of companies according to industry | 5 |
| Table 3 Number of liquidations of close corporations according to industry | 5 |
| Table 4 Total number of liquidations: 2000 to 2006 | 6 |
| Table 5 Total number of compulsory liquidations: 2000 to 2006..... | 6 |
| Table 6 Total number of voluntary liquidations: 2000 to 2006 | 6 |
| Table 7 Number of liquidations of companies: 2000 to 2006..... | 7 |
| Table 8 Number of compulsory liquidations of companies: 2000 to 2006 | 7 |
| Table 9 Number of voluntary liquidations of companies: 2000 to 2006 | 7 |
| Table 10 Number of liquidations of close corporations: 2000 to 2006 | 8 |
| Table 11 Number of compulsory liquidations of close corporations: 2000 to 2006..... | 8 |
| Table 12 Number of voluntary liquidations of close corporations: 2000 to 2006 | 8 |
| Table 13 Total number of insolvencies: 2000 to 2006 | 9 |
| Table 14 Percentage change between December 2006 and the corresponding month of the previous year regarding the number of liquidations | 10 |
| Table 15 Percentage change between the first twelve months of 2006 and the twelve months of 2005 regarding the number of liquidations..... | 10 |
| Table 16 Percentage change between November 2006 and the corresponding month of the previous year regarding the number of insolvencies | 10 |
| Table 17 Percentage change between the first eleven months of 2006 and the first eleven months of 2005 regarding the number of insolvencies | 10 |
| Explanatory notes | 11 |
| Glossary | 12 |
| General information | 13 |

Table A - Key figures for December 2006 regarding liquidations

| Actual estimates | Number of liquidations December 2006 | % change between December 2005 and December 2006 | % change between January 2005 to December 2005 and January 2006 to December 2006 |
|------------------|--------------------------------------|--|--|
| | 266 | 35,7 | -6,2 |

Key findings for December 2006 regarding liquidations

Total number of liquidations decreases

The total number of liquidations recorded for the first twelve months of 2006 decreased by 6,2% (from 3 225 to 3 026) compared with the first twelve months of 2005. The aggregated total of the number of liquidations (3 026) for the twelve months (January 2006 - December 2006) is the lowest compared with the same period for the years 2000 until 2006. In contrast, the total number of liquidations recorded for December 2006 reflected a 35,7% increase (from 196 to 266) compared with December 2005 (see Table A).

The decrease of 6,2% in the total number of liquidations for the first twelve months of 2006 compared with the first twelve months of 2005 was due to decreases of 28,4% (from 524 to 375) in compulsory liquidations and 1,9% (from 2 701 to 2 651) in voluntary liquidations.

The increase of 35,7% in the total number of liquidations for December 2006 compared with December 2005 was due to increases of 194,4% (from 18 to 53) in compulsory liquidations and 19,7% (from 178 to 213) in voluntary liquidations (see Table 6).

Figure 1 – Percentage change for the twelve months (January – December) of the number of liquidations from 2000 to 2006

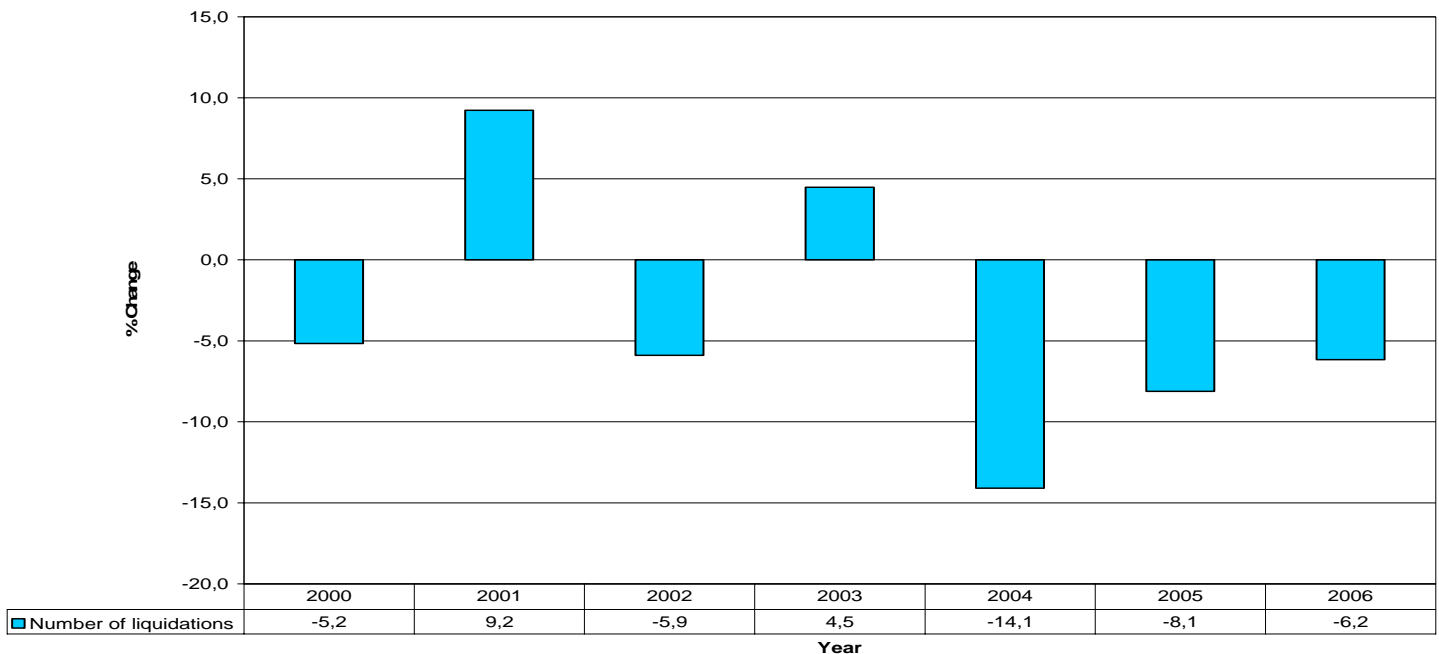


Figure 1 above shows the percentage change in the number of liquidations for the months January to December and covers the period 2000 to 2006. The number of liquidations for the first twelve months of 2006 decreased by 6,2% compared to the decrease of 8,1% for the same period a year ago.

Table B - Key figures regarding insolvencies for November 2006

| Actual estimates | Number of insolvencies November 2006 | % change between November 2005 and November 2006 | % change between January 2005 to November 2005 and January 2006 to November 2006 |
|------------------|--------------------------------------|--|--|
| | 50 | -68,2 | -17,4 |

Key findings for October 2006 regarding insolvencies

Total number of insolvencies decreases

The total number of insolvencies recorded for the first eleven months of 2006 decreased by 17,4 % (from 1 461 to 1 207) compared with the first eleven months of 2005. The aggregated total of the number of insolvencies (1 207) for the eleven months (January 2006 - November 2006) is the lowest compared with the same period for the years 2000 until 2006. The total number of insolvencies recorded for November 2006 decreased by 68,2% (from 157 to 50) compared with November 2005 (see Table B).

Figure 2 – Percentage change for the eleven months (January – November) of the number of insolvencies from 2000 to 2006

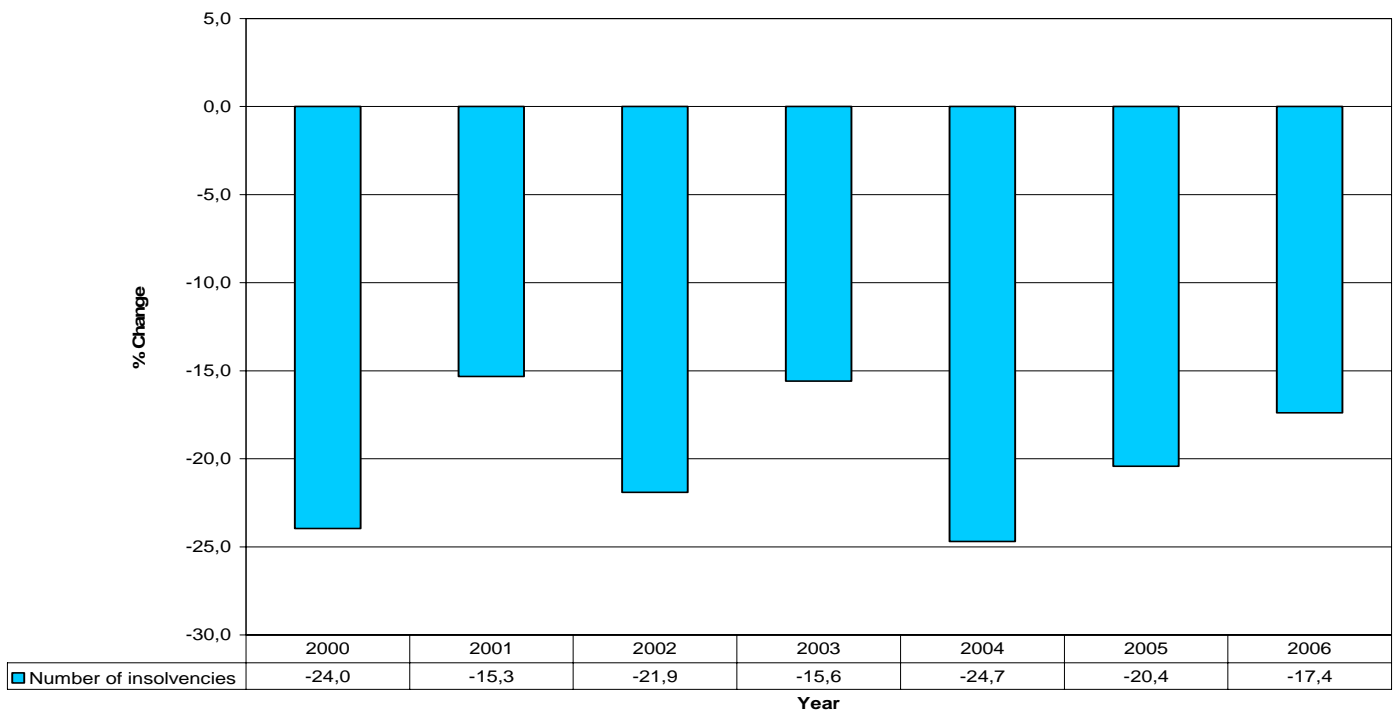


Figure 2 above shows the percentage change in the number of insolvencies for the months January to November and covers the period 2000 to 2006. The growth in the number of insolvencies decreased by 17,4% for the first eleven months of 2006 compared to the 20,4% decrease for the same period a year ago. Growth regarding the number of insolvencies has been negative for the entire time series (2000-2006) and the lowest eleven month decrease was recorded in 2004 (-24,7%).

Figures 3 and 4 below outline the total number of liquidations and insolvencies from 2002 to 2006. Figure 3 shows that the trend estimates for the total number of liquidations has been decreasing from the beginning of 2002 until October of the same year. It then followed an upward trend that peaked in August 2003, but started to decrease thereafter until August 2004 and moved upwards to March 2005. There was a decline from April 2005 until February 2006 and since March 2006 the trend started to increase until present.

Figure 3 – Total number of liquidations

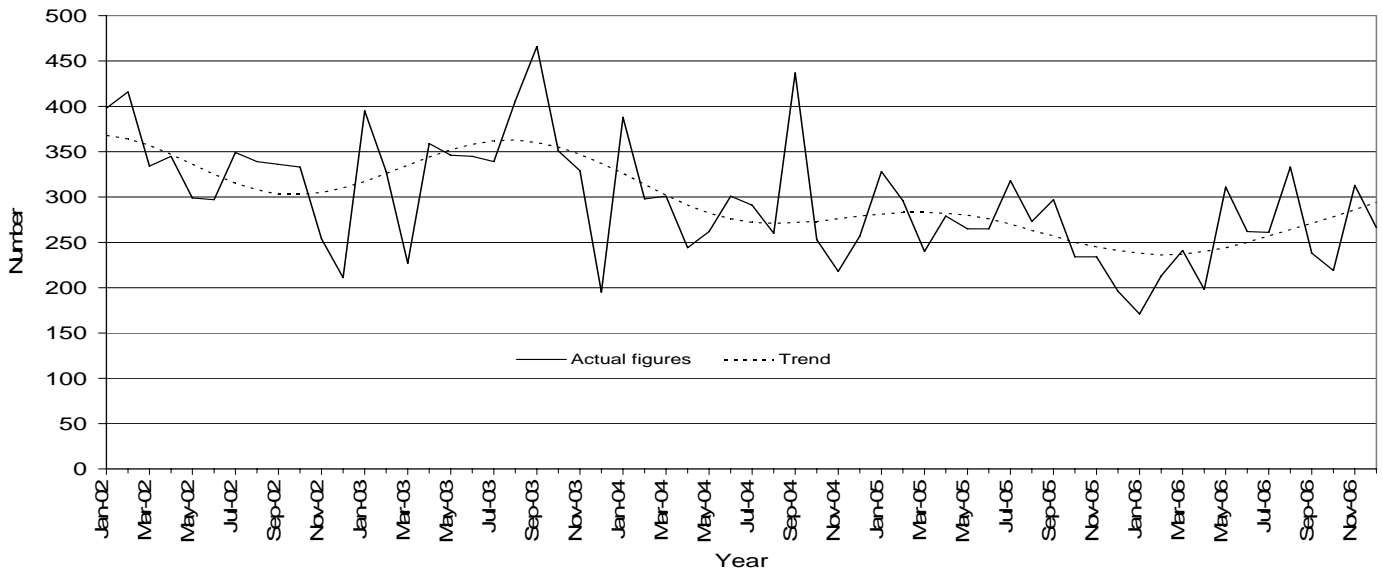
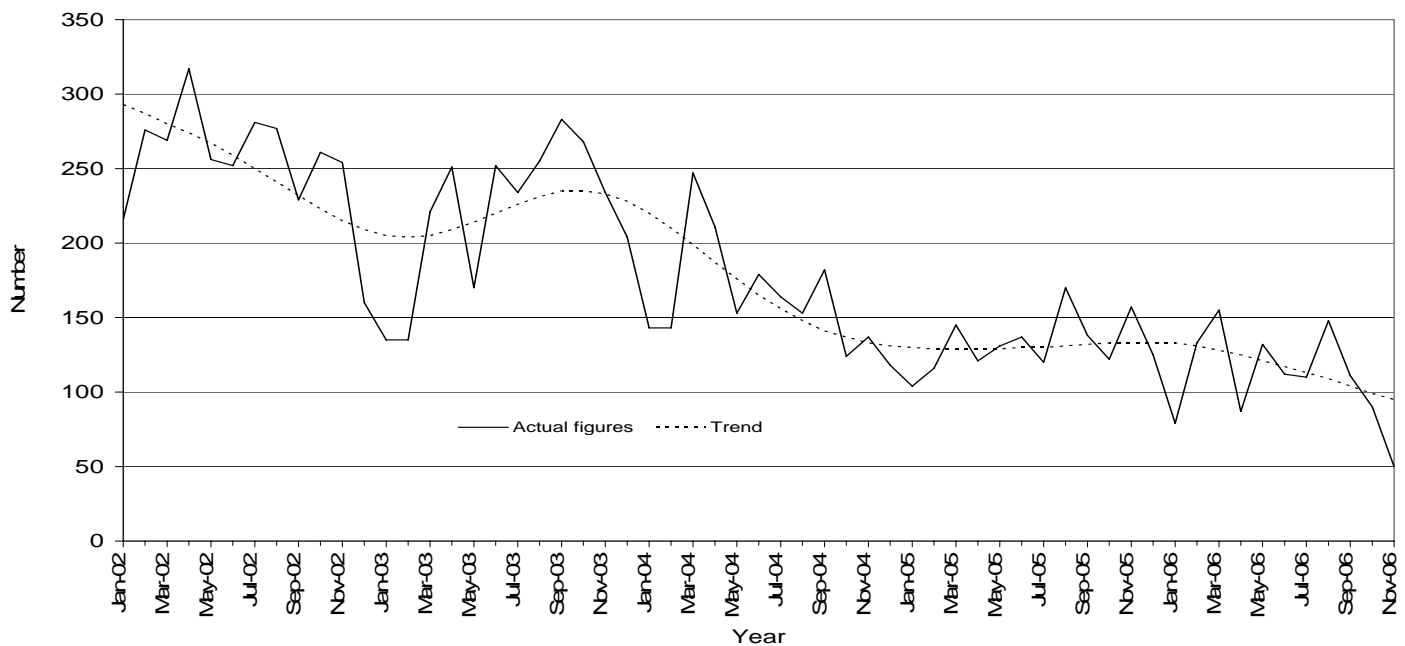


Figure 4 shows that the trend estimates for the total number of insolvencies from the beginning of 2002 shows a decreasing trend until February 2003 then started an upward trend with a peak in October 2003. From November 2003 the trend decreased until November 2004 and from then on stabilized throughout to January 2006. Since February 2006 the trend has been showing a continual decrease until now.

Figure 4 - Total number of insolvencies



PJ Lehohla
Statistician-General

Table 1- Total number of liquidations according to industry

| Industry | Jan – December 2006 | | | December 2005 | | | November 2006 | | | December 2006 | | |
|---|---------------------|------------|-------|---------------|------------|-------|---------------|------------|-------|---------------|------------|-------|
| | Compul-sory | Volun-tary | Total | Compul-sory | Volun-tary | Total | Compul-sory | Volun-tary | Total | Compul-sory | Volun-tary | Total |
| Agriculture, hunting, forestry and fishing | 7 | 23 | 30 | 0 | 1 | 1 | 2 | 2 | 4 | 1 | 0 | 1 |
| Mining and quarrying | 3 | 20 | 23 | 0 | 3 | 3 | 0 | 2 | 2 | 0 | 0 | 0 |
| Manufacturing | 32 | 156 | 188 | 1 | 13 | 14 | 0 | 16 | 16 | 12 | 11 | 23 |
| Electricity, gas and water | 2 | 14 | 16 | 0 | 1 | 1 | 0 | 0 | 0 | 0 | 2 | 2 |
| Construction | 29 | 192 | 221 | 1 | 6 | 7 | 2 | 16 | 18 | 2 | 14 | 16 |
| Wholesale and retail trade, catering and accommodation | 116 | 820 | 936 | 8 | 46 | 54 | 10 | 80 | 90 | 16 | 45 | 61 |
| Transport, storage and communication | 10 | 129 | 139 | 0 | 1 | 1 | 0 | 26 | 26 | 2 | 13 | 15 |
| Financing, insurance, real estate and business services | 142 | 1 043 | 1 185 | 7 | 81 | 88 | 40 | 87 | 127 | 18 | 82 | 100 |
| Community, social and personal services | 34 | 254 | 288 | 1 | 26 | 27 | 2 | 28 | 30 | 2 | 46 | 48 |
| Total number of liquidations | 375 | 2 651 | 3 026 | 18 | 178 | 196 | 56 | 257 | 313 | 53 | 213 | 266 |

Table 2 – Number of liquidations of companies according to industry

| Industry | Jan – December 2006 | | | December 2005 | | | November 2006 | | | December 2006 | | |
|---|---------------------|------------|-------|---------------|------------|-------|---------------|------------|-------|---------------|------------|-------|
| | Compul-sory | Volun-tary | Total | Compul-sory | Volun-tary | Total | Compul-sory | Volun-tary | Total | Compul-sory | Volun-tary | Total |
| Agriculture, hunting, forestry and fishing | 3 | 10 | 13 | 0 | 1 | 1 | 2 | 1 | 3 | 0 | 0 | 0 |
| Mining and quarrying | 2 | 12 | 14 | 0 | 3 | 3 | 0 | 1 | 1 | 0 | 0 | 0 |
| Manufacturing | 20 | 94 | 114 | 0 | 6 | 6 | 0 | 11 | 11 | 12 | 7 | 19 |
| Electricity, gas and water | 0 | 3 | 3 | 0 | 0 | 0 | 0 | 0 | 0 | 0 | 0 | 0 |
| Construction | 11 | 54 | 65 | 0 | 1 | 1 | 1 | 4 | 5 | 1 | 3 | 4 |
| Wholesale and retail trade, catering and accommodation | 54 | 375 | 429 | 5 | 30 | 35 | 4 | 41 | 45 | 10 | 25 | 35 |
| Transport, storage and communication | 7 | 35 | 42 | 0 | 0 | 0 | 0 | 6 | 6 | 1 | 11 | 12 |
| Financing, insurance, real estate and business services | 91 | 564 | 655 | 7 | 36 | 43 | 36 | 50 | 86 | 11 | 42 | 53 |
| Community, social and personal services | 30 | 217 | 247 | 1 | 23 | 24 | | 26 | 26 | 2 | 42 | 44 |
| Total number of liquidations | 218 | 1 364 | 1 582 | 13 | 100 | 113 | 43 | 140 | 183 | 37 | 130 | 167 |

Table 3 – Number of liquidations of close corporations according to industry

| Industry | Jan – December 2006 | | | December 2005 | | | November 2006 | | | December 2006 | | |
|---|---------------------|------------|-------|---------------|------------|-------|---------------|------------|-------|---------------|------------|-------|
| | Compul-sory | Volun-tary | Total | Compul-sory | Volun-tary | Total | Compul-sory | Volun-tary | Total | Compul-sory | Volun-tary | Total |
| Agriculture, hunting, forestry and fishing | 4 | 13 | 17 | 0 | 0 | 0 | 0 | 1 | 1 | 1 | 0 | 1 |
| Mining and quarrying | 1 | 8 | 9 | 0 | 0 | 0 | 0 | 1 | 1 | 0 | 0 | 0 |
| Manufacturing | 12 | 62 | 74 | 1 | 7 | 8 | 0 | 5 | 5 | 0 | 4 | 4 |
| Electricity, gas and water | 2 | 11 | 13 | 0 | 1 | 1 | 0 | 0 | 0 | 0 | 2 | 2 |
| Construction | 18 | 138 | 156 | 1 | 5 | 6 | 1 | 12 | 13 | 1 | 11 | 12 |
| Wholesale and retail trade, catering and accommodation | 62 | 445 | 507 | 3 | 16 | 19 | 6 | 39 | 45 | 6 | 20 | 26 |
| Transport, storage and communication | 3 | 94 | 97 | 0 | 1 | 1 | 0 | 20 | 20 | 1 | 2 | 3 |
| Financing, insurance, real estate and business services | 51 | 479 | 530 | 0 | 45 | 45 | 4 | 37 | 41 | 7 | 40 | 47 |
| Community, social and personal services | 4 | 37 | 41 | 0 | 3 | 3 | 2 | 2 | 4 | 0 | 4 | 4 |
| Total number of liquidations | 157 | 1 287 | 1 444 | 5 | 78 | 83 | 13 | 117 | 130 | 16 | 83 | 99 |

Table 4 - Total number of liquidations: 2000 to 2006

| Month | 2000 | 2001 | 2002 | 2003 | 2004 | 2005 | 2006 |
|-------------|--------------|--------------|--------------|--------------|--------------|--------------|--------------|
| January | 193 | 298 | 398 | 395 | 388 | 328 | 171 |
| February | 229 | 382 | 416 | 328 | 298 | 296 | 213 |
| March | 326 | 317 | 334 | 227 | 301 | 240 | 241 |
| April | 273 | 357 | 345 | 359 | 244 | 279 | 198 |
| May | 258 | 331 | 299 | 346 | 262 | 265 | 311 |
| June | 383 | 294 | 297 | 345 | 301 | 265 | 262 |
| July | 314 | 307 | 349 | 339 | 291 | 318 | 261 |
| August | 511 | 504 | 339 | 406 | 260 | 273 | 333 |
| September | 490 | 337 | 336 | 466 | 437 | 297 | 238 |
| October | 269 | 410 | 333 | 351 | 253 | 234 | 219 |
| November | 348 | 346 | 254 | 329 | 218 | 234 | 313 |
| December | 211 | 273 | 211 | 195 | 257 | 196 | 266 |
| Year | 3 805 | 4 156 | 3 911 | 4 086 | 3 510 | 3 225 | 3 026 |

Table 5 - Total number of compulsory liquidations: 2000 to 2006

| Month | 2000 | 2001 | 2002 | 2003 | 2004 | 2005 | 2006 |
|-------------|--------------|--------------|------------|------------|------------|------------|------------|
| January | 85 | 71 | 78 | 76 | 42 | 30 | 37 |
| February | 78 | 114 | 87 | 65 | 38 | 70 | 15 |
| March | 172 | 68 | 68 | 46 | 57 | 35 | 31 |
| April | 125 | 125 | 87 | 63 | 32 | 18 | 9 |
| May | 57 | 81 | 60 | 52 | 37 | 61 | 20 |
| June | 190 | 88 | 69 | 74 | 63 | 25 | 50 |
| July | 77 | 81 | 69 | 85 | 68 | 84 | 16 |
| August | 247 | 256 | 74 | 120 | 39 | 69 | 46 |
| September | 241 | 118 | 70 | 109 | 83 | 27 | 22 |
| October | 44 | 137 | 54 | 70 | 43 | 40 | 20 |
| November | 128 | 74 | 64 | 60 | 23 | 47 | 56 |
| December | 71 | 71 | 45 | 37 | 39 | 18 | 53 |
| Year | 1 515 | 1 284 | 825 | 857 | 564 | 524 | 375 |

Table 6 - Total number of voluntary liquidations: 2000 to 2006

| Month | 2000 | 2001 | 2002 | 2003 | 2004 | 2005 | 2006 |
|-------------|--------------|--------------|--------------|--------------|--------------|--------------|--------------|
| January | 108 | 227 | 320 | 319 | 346 | 298 | 134 |
| February | 151 | 268 | 329 | 263 | 260 | 226 | 198 |
| March | 154 | 249 | 266 | 181 | 244 | 205 | 210 |
| April | 148 | 232 | 258 | 296 | 212 | 261 | 189 |
| May | 201 | 250 | 239 | 294 | 225 | 204 | 291 |
| June | 193 | 206 | 228 | 271 | 238 | 240 | 212 |
| July | 237 | 226 | 280 | 254 | 223 | 234 | 245 |
| August | 264 | 248 | 265 | 286 | 221 | 204 | 287 |
| September | 249 | 219 | 266 | 357 | 354 | 270 | 216 |
| October | 225 | 273 | 279 | 281 | 210 | 194 | 199 |
| November | 220 | 272 | 190 | 269 | 195 | 187 | 257 |
| December | 140 | 202 | 166 | 158 | 218 | 178 | 213 |
| Year | 2 290 | 2 872 | 3 086 | 3 229 | 2 946 | 2 701 | 2 651 |

Table 7 – Number of liquidations of companies: 2000 to 2006

| Month | 2000 | 2001 | 2002 | 2003 | 2004 | 2005 | 2006 |
|-------------|--------------|--------------|--------------|--------------|--------------|--------------|--------------|
| January | 91 | 107 | 130 | 200 | 191 | 130 | 85 |
| February | 151 | 119 | 212 | 188 | 132 | 154 | 107 |
| March | 241 | 132 | 183 | 127 | 148 | 123 | 127 |
| April | 166 | 129 | 161 | 151 | 119 | 176 | 100 |
| May | 130 | 156 | 117 | 162 | 128 | 122 | 131 |
| June | 173 | 129 | 145 | 178 | 136 | 132 | 140 |
| July | 89 | 144 | 183 | 141 | 132 | 177 | 145 |
| August | 152 | 149 | 173 | 202 | 114 | 124 | 143 |
| September | 93 | 136 | 164 | 260 | 141 | 143 | 122 |
| October | 106 | 166 | 118 | 235 | 126 | 115 | 132 |
| November | 112 | 181 | 106 | 136 | 90 | 95 | 183 |
| December | 122 | 123 | 166 | 130 | 75 | 113 | 167 |
| Year | 1 626 | 1 671 | 1 858 | 2 110 | 1 532 | 1 604 | 1 582 |

Table 8 – Number of compulsory liquidations of companies: 2000 to 2006

| Month | 2000 | 2001 | 2002 | 2003 | 2004 | 2005 | 2006 |
|-------------|------------|------------|------------|------------|------------|------------|------------|
| January | 32 | 34 | 19 | 37 | 16 | 6 | 18 |
| February | 57 | 17 | 46 | 28 | 15 | 43 | 4 |
| March | 147 | 28 | 32 | 17 | 32 | 23 | 23 |
| April | 87 | 27 | 53 | 17 | 6 | 13 | 5 |
| May | 40 | 41 | 12 | 28 | 20 | 30 | 5 |
| June | 100 | 53 | 29 | 31 | 16 | 7 | 35 |
| July | 32 | 41 | 33 | 29 | 31 | 62 | 6 |
| August | 48 | 38 | 17 | 69 | 11 | 21 | 11 |
| September | 31 | 54 | 22 | 60 | 33 | 17 | 18 |
| October | 21 | 51 | 22 | 42 | 22 | 22 | 13 |
| November | 25 | 35 | 25 | 38 | 12 | 18 | 43 |
| December | 39 | 24 | 29 | 27 | 9 | 13 | 37 |
| Year | 659 | 443 | 339 | 423 | 223 | 275 | 218 |

Table 9 - Number of voluntary liquidations of companies: 2000 to 2006

| Month | 2000 | 2001 | 2002 | 2003 | 2004 | 2005 | 2006 |
|-------------|------------|--------------|--------------|--------------|--------------|--------------|--------------|
| January | 59 | 73 | 111 | 163 | 175 | 124 | 67 |
| February | 94 | 102 | 166 | 160 | 117 | 111 | 103 |
| March | 94 | 104 | 151 | 110 | 116 | 100 | 104 |
| April | 79 | 102 | 108 | 134 | 113 | 163 | 95 |
| May | 90 | 115 | 105 | 134 | 108 | 92 | 126 |
| June | 73 | 76 | 116 | 147 | 120 | 125 | 105 |
| July | 57 | 103 | 150 | 112 | 101 | 115 | 139 |
| August | 104 | 111 | 156 | 133 | 103 | 103 | 132 |
| September | 62 | 82 | 142 | 200 | 108 | 126 | 104 |
| October | 85 | 115 | 96 | 193 | 104 | 93 | 119 |
| November | 87 | 146 | 81 | 98 | 78 | 77 | 140 |
| December | 83 | 99 | 137 | 103 | 66 | 100 | 130 |
| Year | 967 | 1 228 | 1 519 | 1 687 | 1 309 | 1 329 | 1 364 |

Table 10 - Number of liquidations of close corporations: 2000 to 2006

| Month | 2000 | 2001 | 2002 | 2003 | 2004 | 2005 | 2006 |
|-------------|--------------|--------------|--------------|--------------|--------------|--------------|--------------|
| January | 102 | 191 | 268 | 195 | 197 | 198 | 86 |
| February | 78 | 263 | 204 | 140 | 166 | 142 | 106 |
| March | 85 | 185 | 151 | 100 | 153 | 117 | 114 |
| April | 107 | 228 | 184 | 208 | 125 | 103 | 98 |
| May | 128 | 175 | 182 | 184 | 134 | 143 | 180 |
| June | 210 | 165 | 152 | 167 | 165 | 133 | 122 |
| July | 225 | 163 | 166 | 198 | 159 | 141 | 116 |
| August | 359 | 355 | 166 | 204 | 146 | 149 | 190 |
| September | 397 | 201 | 172 | 206 | 296 | 154 | 116 |
| October | 163 | 244 | 215 | 116 | 127 | 119 | 87 |
| November | 236 | 165 | 148 | 193 | 128 | 139 | 130 |
| December | 89 | 150 | 45 | 65 | 182 | 83 | 99 |
| Year | 2 179 | 2 485 | 2 053 | 1 976 | 1 978 | 1 621 | 1 444 |

Table 11 - Number of compulsory liquidations of close corporations: 2000 to 2006

| Month | 2000 | 2001 | 2002 | 2003 | 2004 | 2005 | 2006 |
|-------------|------------|------------|------------|------------|------------|------------|------------|
| January | 53 | 37 | 59 | 39 | 26 | 24 | 19 |
| February | 21 | 97 | 41 | 37 | 23 | 27 | 11 |
| March | 25 | 40 | 36 | 29 | 25 | 12 | 8 |
| April | 38 | 98 | 34 | 46 | 26 | 5 | 4 |
| May | 17 | 40 | 48 | 24 | 17 | 31 | 15 |
| June | 90 | 35 | 40 | 43 | 47 | 18 | 15 |
| July | 45 | 40 | 36 | 56 | 37 | 22 | 10 |
| August | 199 | 218 | 57 | 51 | 28 | 48 | 35 |
| September | 210 | 64 | 48 | 49 | 50 | 10 | 4 |
| October | 23 | 86 | 32 | 28 | 21 | 18 | 7 |
| November | 103 | 39 | 39 | 22 | 11 | 29 | 13 |
| December | 32 | 47 | 16 | 10 | 30 | 5 | 16 |
| Year | 856 | 841 | 486 | 434 | 341 | 249 | 157 |

Table 12 – Number of voluntary liquidations of close corporations: 2000 to 2006

| Month | 2000 | 2001 | 2002 | 2003 | 2004 | 2005 | 2006 |
|-------------|--------------|--------------|--------------|--------------|--------------|--------------|--------------|
| January | 49 | 154 | 209 | 156 | 171 | 174 | 67 |
| February | 57 | 166 | 163 | 103 | 143 | 115 | 95 |
| March | 60 | 145 | 115 | 71 | 128 | 105 | 106 |
| April | 69 | 130 | 150 | 162 | 99 | 98 | 94 |
| May | 111 | 135 | 134 | 160 | 117 | 112 | 165 |
| June | 120 | 130 | 112 | 124 | 118 | 115 | 107 |
| July | 180 | 123 | 130 | 142 | 122 | 119 | 106 |
| August | 160 | 137 | 109 | 153 | 118 | 101 | 155 |
| September | 187 | 137 | 124 | 157 | 246 | 144 | 112 |
| October | 140 | 158 | 183 | 88 | 106 | 101 | 80 |
| November | 133 | 126 | 109 | 171 | 117 | 110 | 117 |
| December | 57 | 103 | 29 | 55 | 152 | 78 | 83 |
| Year | 1 323 | 1 644 | 1 567 | 1 542 | 1 637 | 1 372 | 1 287 |

Table 13 - Total number of insolvencies: 2000 to 2006

| Month | 2000 | 2001 | 2002 | 2003 | 2004 | 2005 | 2006 |
|--------------|--------------|--------------|--------------|--------------|--------------|--------------|--------------|
| January | 285 | 254 | 216 | 135 | 143 | 104 | 79 |
| February | 445 | 308 | 276 | 135 | 143 | *116 | *133 |
| March | 399 | 356 | 269 | 221 | 247 | 145 | *155 |
| April | 404 | 319 | 317 | 251 | 211 | *121 | 87 |
| May | 413 | 394 | 256 | 170 | *153 | *131 | *132 |
| June | 413 | 325 | 252 | 252 | 179 | *137 | 1/ 112 |
| July | 384 | 403 | 281 | 234 | 164 | *120 | 1/ 110 |
| August | 499 | 374 | 277 | 255 | 153 | *170 | 1/ 148 |
| September | 317 | 308 | 229 | 283 | 182 | 138 | 1/ 111 |
| October | 388 | 334 | 261 | 268 | 124 | 122 | 1/ 90 |
| November | 420 | 323 | 254 | 234 | 137 | 157 | 1/ 50 |
| December | 327 | 238 | 160 | 204 | 118 | 125 | |
| Year | 4 694 | 3 936 | 3 048 | 2 642 | 1 954 | 1 586 | 1 207 |

1/ Preliminary.

*Revised.

Table 14 – Percentage change between December 2006 and the corresponding month of the previous year regarding the number of liquidations

| Actual estimates | Number of liquidations December 2005 | Number of liquidations December 2006 | % change between December 2005 and December 2006 | Difference between December 2005 and December 2006 |
|-------------------------|---|---|---|---|
| | 196 | 266 | 35,7 | 70 |

Table 15 – Percentage change between the first twelve months of 2006 and the first twelve months of 2005 regarding the number of liquidations

| Actual estimates | Number of liquidations January 2005 to December 2005 | Number of liquidations January 2006 to December 2006 | % change between January 2005 to December 2005 and January 2006 to December 2006 | Difference between January 2005 to December 2005 and January 2006 to December 2006 |
|-------------------------|---|---|---|---|
| | 3 225 | 3 026 | -6,2 | -199 |

Table 16 – Percentage change between November 2006 and the corresponding month of the previous year regarding the number of insolvencies

| Actual estimates | Number of insolvencies November 2005 | Number of insolvencies November 2006 | % change between November 2005 and November 2006 | Difference between November 2005 and November 2006 |
|-------------------------|---|---|---|---|
| | 157 | 50 | -68,2 | -107 |

Table 17 - Percentage change between the first eleven months of 2006 and the first eleven months of 2005 regarding the number of insolvencies

| Actual estimates | Number of insolvencies January 2005 to November 2005 | Number of insolvencies January 2006 to November 2006 | % change between January 2005 to November 2005 and January 2006 to November 2006 | Difference between January 2005 to November 2005 and January 2006 to November 2006 |
|-------------------------|---|---|---|---|
| | 1 461 | 1 207 | -17,4 | -254 |

Explanatory notes

| | | |
|----------------------------------|---|--|
| Introduction | 1 | <p>Statistics South Africa (Stats SA) collects administrative information on liquidations from the Registrar of Companies and Close Corporations, Department of Trade and Industry, while information on insolvencies is gathered from Notices of the Master of the Supreme Court which appears in the Government Gazette.</p> <p>2 This statistical release reflects voluntary and compulsory liquidations of companies and close corporations and insolvencies of individuals and partnerships.</p> |
| Scope of the survey | 3 | <p>This survey covers -</p> <ul style="list-style-type: none"> • the total number of companies and close corporations which were liquidated; and • the total number of individuals and partnerships placed under final sequestration. |
| Purpose of the survey | | <p>Information on liquidations is obtained from the Registrar of Companies and Close Corporations, Department of Trade and Industry, while information on insolvencies is based on Notices of the Master of the Supreme Court, which appear in the Government Gazette. The aggregated data in this release are used by the private and public sectors to measure economic performance and are also an important indicator of the scope of unpaid debt in South Africa. Due to insolvencies figures being available late, the data on insolvencies are published a month later than liquidations.</p> |
| Related publications | 4 | <p>Users may also wish to refer to the following publications which are available from Stats SA -</p> <ul style="list-style-type: none"> • <i>Bulletin of Statistics.</i> • <i>SA Statistics.</i> |
| Unpublished statistics | 5 | <p>In some cases Stats SA can also make available statistics not included in standard publications. The statistics can be made available in one or more of the following ways: computer printout, CD or diskette. Generally a charge is made for providing unpublished statistics.</p> |
| Symbols and abbreviations | 6 | <p>CD Compact Disc Stats SA Statistics South Africa</p> |

Glossary

| | |
|-------------------------------|---|
| Compulsory liquidation | A compulsory liquidation takes place when the affairs of a company or close corporation are wound up by order of the court. |
| Insolvency | Insolvency refers to an individual or partnership which is unable to pay its debt and is placed under final sequestration. The number of insolvencies does not refer to the number of persons involved, as a partnership which is unable to pay its debt is regarded as one insolvency, irrespective of the number of partners. |
| Liquidation | Liquidation refers to the winding-up of the affairs of a company or close corporation when liabilities exceed assets and it can be resolved by voluntary action or by an order of the court. |
| Voluntary liquidation | A voluntary liquidation takes place when a company or close corporation, by own choice, resolves to wind-up its affairs. |

General information

Stats SA publishes approximately 300 different statistical releases each year. It is not economically viable to produce them in more than one of South Africa's eleven official languages. Since the releases are used extensively, not only locally but also by international economic and social-scientific communities, Stats SA releases are published in English only.

Stats SA has copyright on this publication. Users may apply the information as they wish, provided that they acknowledge Stats SA as the source of the basic data wherever they process, apply, utilise, publish or distribute the data; and also that they specify that the relevant application and analysis (where applicable) result from their own processing of the data.

Stats SA products

A complete set of Stats SA publications is available at the Stats SA Library and the following libraries:

National Library of South Africa, Pretoria Division
National Library of South Africa, Cape Town Division
Natal Society Library, Pietermaritzburg
Library of Parliament, Cape Town
Bloemfontein Public Library
Johannesburg Public Library
Eastern Cape Library Services, King William's Town
Central Regional Library, Polokwane
Central Reference Library, Nelspruit
Central Reference Collection, Kimberley
Central Reference Library, Mmabatho

Stats SA also provides a subscription service.

Electronic services

A large range of data is available via on-line services, diskette, CD and computer printouts. For more details about our electronic data services, contact (012) 310 8600/8390/8351/4892/8964/8095.

You can visit us on the internet at: www.statssa.gov.za

Enquiries

Telephone number: (012) 310 8600/ 8390/ 8351/ 4892/ 8964/ 8095 (user information services)
(012) 310 2965 (technical enquiries)
(012) 310 8161 (orders)
(012) 310 4883/4885/8018 (library)

Fax number: (012) 310 8332 (technical enquiries)

Email: Juan-Pierret@statssa.gov.za (technical enquiries)
info@statssa.gov.za (user information services)
distribution@statssa.gov.za (orders)

Postal address: Private Bag X44, Pretoria, 0001

Produced by Stats SA