

**STATISTICAL RELEASE**  
**P0043**

**Statistics of liquidations and insolvencies**  
**(Preliminary)**

**August 2017**

**Embargoed until:**  
**26 September 2017**  
**14:30**

**ENQUIRIES:**  
Juan-Pierre Terblanche  
012 310 2965

**FORTHCOMING ISSUE:**  
September 2017

**EXPECTED RELEASE DATE:**  
23 October 2017

[www.statssa.gov.za](http://www.statssa.gov.za)  
[info@statssa.gov.za](mailto:info@statssa.gov.za)  
T +27 12 310 8911  
F +27 12 310 8500

Private Bag X44, Pretoria, 0001, South Africa  
ISibalo House, Koch Street, Salvokop, Pretoria, 0002

## Contents

<b>Liquidations: results for August 2017 .....</b>	<b>2</b>
Table A – Number of liquidations.....	2
Figure 1 – Number of liquidations.....	2
<b>Insolvencies: results for July 2017 .....</b>	<b>3</b>
Table B – Number of insolvencies .....	3
Figure 2 – Number of insolvencies .....	3
<b>Tables.....</b>	<b>4</b>
Table 1 – Total liquidations according to industry (number).....	4
Table 1.1 – Liquidations of companies according to industry (number).....	4
Table 1.2 – Liquidations of close corporations according to industry (number) .....	4
Table 2 – Total liquidations (number) .....	5
Table 2.1 – Compulsory liquidations (number).....	5
Table 2.2 – Voluntary liquidations (number).....	5
Table 3.1 – Compulsory liquidations of companies (number) .....	6
Table 3.2 – Voluntary liquidations of companies (number) .....	6
Table 4 – Total liquidations of close corporations (number).....	7
Table 4.1 – Compulsory liquidations of close corporations (number) .....	7
Table 4.2 – Voluntary liquidations of close corporations (number) .....	7
Table 5 – Insolvencies of individuals and partnerships (number) .....	8
Table 6 – Seasonally adjusted number of insolvencies .....	8
<b>Explanatory notes.....</b>	<b>9</b>
<b>Glossary.....</b>	<b>9</b>
<b>Technical enquiries .....</b>	<b>10</b>
<b>General information.....</b>	<b>10</b>

## Liquidations: results for August 2017

**Table A – Number of liquidations**

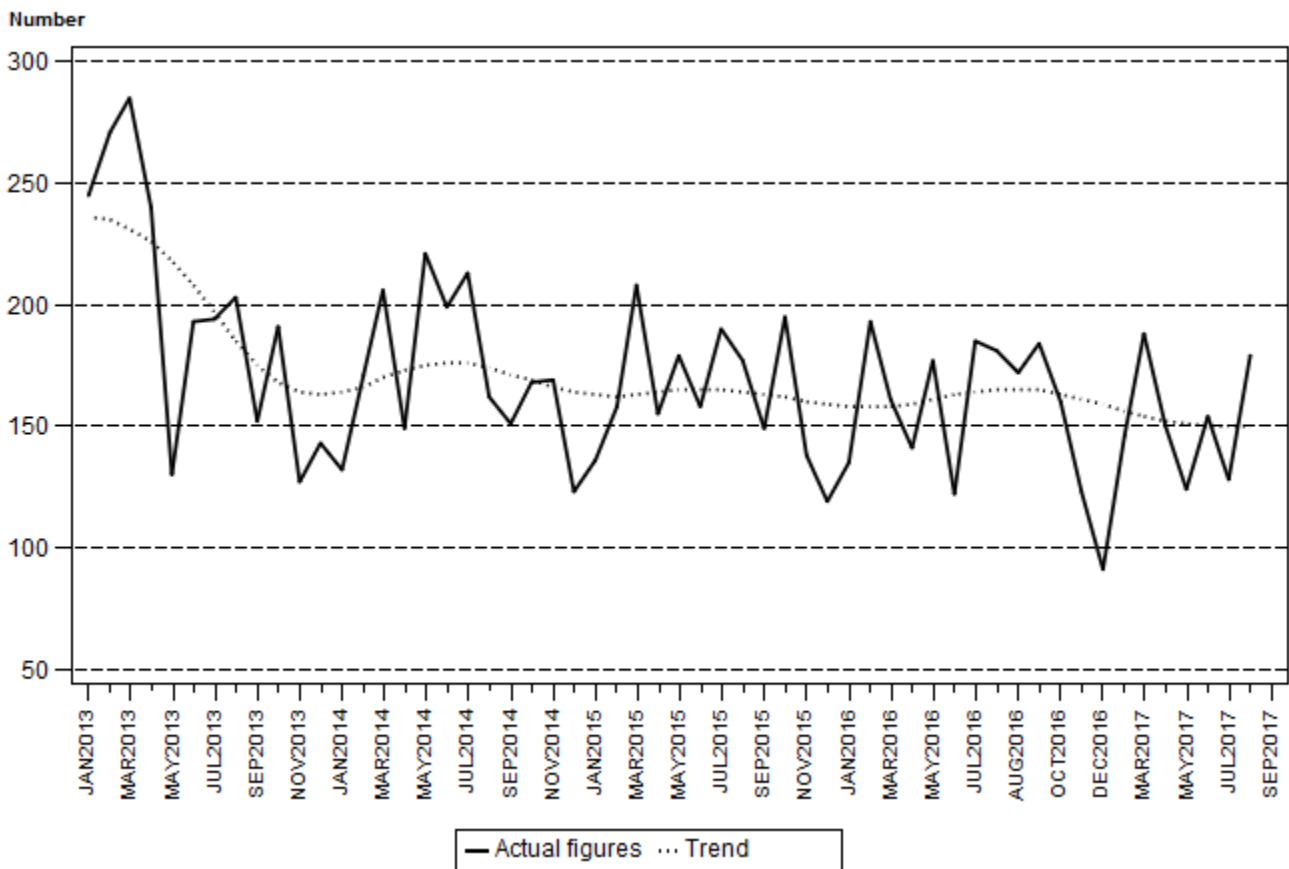
Number of liquidations August 2017	% change between August 2016 and August 2017	% change between June to August 2016 and June to August 2017	% change between January to August 2016 and January to August 2017
179	-1,1	-5,5	-10,4

The total number of liquidations showed a decrease of 1,1% in August 2017 compared with August 2016. Voluntary liquidations decreased by 14 cases while compulsory liquidations increased by 12 cases.

Table 1 shows liquidations by industry. Six out of the ten industries decreased year-on-year with financing, insurance, real estate and business services showing the largest decrease from 72 to 49 (23 fewer liquidations).

There was a decrease of 5,5% in the three months ended August 2017 compared with the three months ended August 2016. The total number of liquidations recorded for the first eight months of 2017 decreased by 10,4% compared with the first eight months of 2016.

**Figure 1 – Number of liquidations**



### Insolvencies: results for July 2017

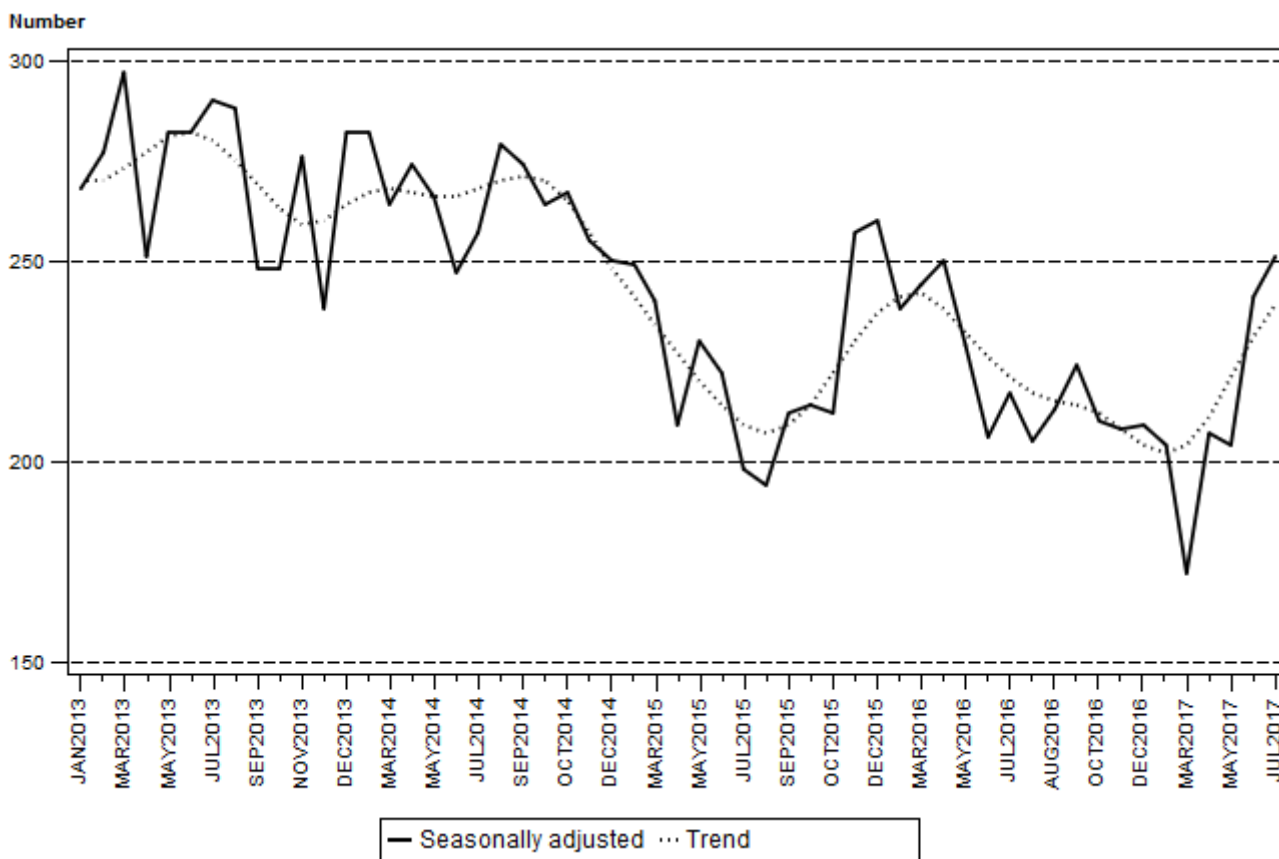
**Table B – Number of insolvencies**

Number of insolvencies July 2017	% change between July 2016 and July 2017	% change between May to July 2016 and May to July 2017	% change between January to July 2016 and January to July 2017
249	13,7	6,0	-8,5

The estimated number of insolvencies increased by 13,7% year-on-year in July 2017. A 6,0% increase was estimated in the three months ended July 2017 compared with the three months ended July 2016 – see Table 5.

Seasonally adjusted insolvencies increased by 4,1% in July 2017 compared with June 2017. This followed month-on-month changes of 18,1% in June 2017 and -1,4% in May 2017 – see Table 6.

**Figure 2 – Number of insolvencies**



**PJ Lehohla**  
**Statistician-General**

## Tables

Table 1 – Total liquidations according to industry (number)

Industry	January – August 2017			August 2016			July 2017			August 2017		
	C	V	Total	C	V	Total	C	V	Total	C	V	Total
1.Agriculture, hunting, forestry and fishing	0	9	9	0	2	2	0	0	0	0	1	1
2.Mining and quarrying	0	4	4	0	0	0	0	1	1	0	0	0
3.Manufacturing	0	39	39	0	7	7	0	5	5	0	6	6
4.Electricity, gas and water	1	3	4	0	0	0	0	0	0	1	1	2
5.Construction	8	54	62	0	11	11	2	7	9	1	10	11
6.Trade, catering and accommodation	23	233	256	2	44	46	4	30	34	8	33	41
7.Transport, storage, communication	4	21	25	0	5	5	0	1	1	0	3	3
8.Financing, insurance, real estate, business services	33	333	366	3	69	72	1	39	40	4	45	49
9.Community, social, personal services	10	96	106	3	9	12	1	12	13	1	10	11
10.Unclassified	21	268	289	1	25	26	2	23	25	6	49	55
<b>Total number of liquidations</b>	<b>100</b>	<b>1 060</b>	<b>1 160</b>	<b>9</b>	<b>172</b>	<b>181</b>	<b>10</b>	<b>118</b>	<b>128</b>	<b>21</b>	<b>158</b>	<b>179</b>

Table 1.1 – Liquidations of companies according to industry (number)

Industry	January – August 2017			August 2016			July 2017			August 2017		
	C	V	Total	C	V	Total	C	V	Total	C	V	Total
1.Agriculture, hunting, forestry and fishing	0	5	5	0	2	2	0	0	0	0	0	0
2.Mining and quarrying	0	4	4	0	0	0	0	1	1	0	0	0
3.Manufacturing	0	15	15	0	3	3	0	2	2	0	3	3
4.Electricity, gas and water	0	0	0	0	0	0	0	0	0	0	0	0
5.Construction	4	15	19	0	2	2	0	2	2	0	4	4
6.Trade, catering and accommodation	14	86	100	1	23	24	2	16	18	4	10	14
7.Transport, storage, communication	3	5	8	0	0	0	0	0	0	0	1	1
8.Financing, insurance, real estate, business services	15	150	165	2	38	40	0	20	20	4	20	24
9.Community, social, personal services	2	7	9	2	1	3	0	0	0	0	1	1
10.Unclassified	20	227	247	1	22	23	2	17	19	6	41	47
<b>Total number of liquidations</b>	<b>58</b>	<b>514</b>	<b>572</b>	<b>6</b>	<b>91</b>	<b>97</b>	<b>4</b>	<b>58</b>	<b>62</b>	<b>14</b>	<b>80</b>	<b>94</b>

Table 1.2 – Liquidations of close corporations according to industry (number)

Industry	January – August 2017			August 2016			July 2017			August 2017		
	C	V	Total	C	V	Total	C	V	Total	C	V	Total
1.Agriculture, hunting, forestry and fishing	0	4	4	0	0	0	0	0	0	0	1	1
2.Mining and quarrying	0	0	0	0	0	0	0	0	0	0	0	0
3.Manufacturing	0	24	24	0	4	4	0	3	3	0	3	3
4.Electricity, gas and water	1	3	4	0	0	0	0	0	0	1	1	2
5.Construction	4	39	43	0	9	9	2	5	7	1	6	7
6.Trade, catering and accommodation	9	147	156	1	21	22	2	14	16	4	23	27
7.Transport, storage, communication	1	16	17	0	5	5	0	1	1	0	2	2
8.Financing, insurance, real estate, business services	18	183	201	1	31	32	1	19	20	0	25	25
9.Community, social, personal services	8	89	97	1	8	9	1	12	13	1	9	10
10.Unclassified	1	41	42	0	3	3	0	6	6	0	8	8
<b>Total number of liquidations</b>	<b>42</b>	<b>546</b>	<b>588</b>	<b>3</b>	<b>81</b>	<b>84</b>	<b>6</b>	<b>60</b>	<b>66</b>	<b>7</b>	<b>78</b>	<b>85</b>

C = Compulsory.

V = Voluntary.

**Table 2 – Total liquidations (number)**

Month	2011	2012	2013	2014	2015	2016	2017
January	313	200	245	132	136	135	91
February	399	200	271	171	158	193	146
March	350	312	285	206	208	161	188
April	267	274	240	149	155	141	150
May	107	269	130	221	179	177	124
June	156	213	193	199	158	122	154
July	251	147	194	213	190	185	128
August	302	241	203	162	177	181	179
September	330	236	152	151	149	172	
October	363	235	191	168	195	184	
November	398	195	127	169	138	160	
December	323	194	143	123	119	123	
<b>Total</b>	<b>3 559</b>	<b>2 716</b>	<b>2 374</b>	<b>2 064</b>	<b>1 962</b>	<b>1 934</b>	

**Table 2.1 – Compulsory liquidations (number)**

Month	2011	2012	2013	2014	2015	2016	2017
January	45	61	3	22	13	16	6
February	26	27	26	12	22	13	13
March	12	39	53	18	39	14	14
April	16	4	17	35	7	24	4
May	30	3	9	29	20	14	15
June	2	14	16	89	29	10	17
July	8	1	18	47	34	25	10
August	14	63	19	25	23	9	21
September	18	58	13	20	15	29	
October	61	21	9	33	14	20	
November	74	18	4	23	12	14	
December	75	8	24	13	10	12	
<b>Total</b>	<b>381</b>	<b>317</b>	<b>211</b>	<b>366</b>	<b>238</b>	<b>200</b>	

**Table 2.2 – Voluntary liquidations (number)**

Month	2011	2012	2013	2014	2015	2016	2017
January	268	139	242	110	123	119	85
February	373	173	245	159	136	180	133
March	338	273	232	188	169	147	174
April	251	270	223	114	148	117	146
May	77	266	121	192	159	163	109
June	154	199	177	110	129	112	137
July	243	146	176	166	156	160	118
August	288	178	184	137	154	172	158
September	312	178	139	131	134	143	
October	302	214	182	135	181	164	
November	324	177	123	146	126	146	
December	248	186	119	110	109	111	
<b>Total</b>	<b>3 178</b>	<b>2 399</b>	<b>2 163</b>	<b>1 698</b>	<b>1 724</b>	<b>1 734</b>	

**Table 3 – Total liquidations of companies (number)**

Month	2011	2012	2013	2014	2015	2016	2017
January	156	97	121	74	79	66	42
February	199	75	123	87	80	100	81
March	145	115	147	89	101	78	80
April	97	105	104	78	70	80	73
May	36	130	56	108	87	96	56
June	52	105	96	104	90	65	84
July	81	74	92	109	93	108	62
August	180	133	97	86	87	97	94
September	190	136	82	75	79	85	
October	167	109	100	78	88	98	
November	152	72	55	75	59	72	
December	151	108	75	65	56	67	
<b>Total</b>	<b>1 606</b>	<b>1 259</b>	<b>1 148</b>	<b>1 028</b>	<b>969</b>	<b>1 012</b>	

**Table 3.1 – Compulsory liquidations of companies (number)**

Month	2011	2012	2013	2014	2015	2016	2017
January	18	37	3	16	9	9	3
February	16	11	5	7	16	9	12
March	12	11	32	6	18	6	6
April	0	2	10	24	5	17	3
May	3	3	7	20	16	9	5
June	1	14	11	54	22	4	11
July	4	0	9	26	21	9	4
August	0	34	11	20	12	6	14
September	18	41	9	13	3	17	
October	59	14	4	22	8	13	
November	42	6	2	6	7	6	
December	47	2	14	8	3	8	
<b>Total</b>	<b>220</b>	<b>175</b>	<b>117</b>	<b>222</b>	<b>140</b>	<b>113</b>	

**Table 3.2 – Voluntary liquidations of companies (number)**

Month	2011	2012	2013	2014	2015	2016	2017
January	138	60	118	58	70	57	39
February	183	64	118	80	64	91	69
March	133	104	115	83	83	72	74
April	97	103	94	54	65	63	70
May	33	127	49	88	71	87	51
June	51	91	85	50	68	61	73
July	77	74	83	83	72	99	58
August	180	99	86	66	75	91	80
September	172	95	73	62	76	68	
October	108	95	96	56	80	85	
November	110	66	53	69	52	66	
December	104	106	61	57	53	59	
<b>Total</b>	<b>1 386</b>	<b>1 084</b>	<b>1 031</b>	<b>806</b>	<b>829</b>	<b>899</b>	

**Table 4 – Total liquidations of close corporations (number)**

Month	2011	2012	2013	2014	2015	2016	2017
January	157	103	124	58	57	69	49
February	200	125	148	84	78	93	65
March	205	197	138	117	107	83	108
April	170	169	136	71	85	61	77
May	71	139	74	113	92	81	68
June	104	108	97	95	68	57	70
July	170	73	102	104	97	77	66
August	122	108	106	76	90	84	85
September	140	100	70	76	70	87	
October	196	126	91	90	107	86	
November	246	123	72	94	79	88	
December	172	86	68	58	63	56	
<b>Total</b>	<b>1 953</b>	<b>1 457</b>	<b>1 226</b>	<b>1 036</b>	<b>993</b>	<b>922</b>	

**Table 4.1 – Compulsory liquidations of close corporations (number)**

Month	2011	2012	2013	2014	2015	2016	2017
January	27	24	0	6	4	7	3
February	10	16	21	5	6	4	1
March	0	28	21	12	21	8	8
April	16	2	7	11	2	7	1
May	27	0	2	9	4	5	10
June	1	0	5	35	7	6	6
July	4	1	9	21	13	16	6
August	14	29	8	5	11	3	7
September	0	17	4	7	12	12	
October	2	7	5	11	6	7	
November	32	12	2	17	5	8	
December	28	6	10	5	7	4	
<b>Total</b>	<b>161</b>	<b>142</b>	<b>94</b>	<b>144</b>	<b>98</b>	<b>87</b>	

**Table 4.2 – Voluntary liquidations of close corporations (number)**

Month	2011	2012	2013	2014	2015	2016	2017
January	130	79	124	52	53	62	46
February	190	109	127	79	72	89	64
March	205	169	117	105	86	75	100
April	154	167	129	60	83	54	76
May	44	139	72	104	88	76	58
June	103	108	92	60	61	51	64
July	166	72	93	83	84	61	60
August	108	79	98	71	79	81	78
September	140	83	66	69	58	75	
October	194	119	86	79	101	79	
November	214	111	70	77	74	80	
December	144	80	58	53	56	52	
<b>Total</b>	<b>1 792</b>	<b>1 315</b>	<b>1 132</b>	<b>892</b>	<b>895</b>	<b>835</b>	



**Table 5 – Insolvencies of individuals and partnerships (number)**

Month	1/ 2011	1/ 2012	1/ 2013	1/ 2014	1/ 2015	1/ 2016	1/ 2017
January	161	292	164	187	168	180	156
February	340	405	269	281	254	244	213
March	479	466	339	323	293	297	225
April	291	349	241	248	207	233	180
May	365	366	310	272	230	237	206
June	418	342	291	267	236	228	270
July	373	328	304	278	214	219	249
August	464	405	349	326	216	233	
September	396	276	243	261	203	210	
October	461	296	264	280	215	219	
November	355	306	269	258	212	208	
December	241	205	196	211	226	176	
<b>Total</b>	<b>4 344</b>	<b>4 036</b>	<b>3 239</b>	<b>3 192</b>	<b>2 674</b>	<b>2 684</b>	

1/ Preliminary.

**Table 6 – Seasonally adjusted number of insolvencies**

Month	Number				Month-on-month % change			
	2014	2015	2016	2017	2014	2015	2016	2017
January	282	250	260	209	18,5	-2,0	1,2	0,5
February	282	249	238	204	0,0	-0,4	-8,5	-2,4
March	264	240	244	172	-6,4	-3,6	2,5	-15,7
April	274	209	250	207	3,8	-12,9	2,5	20,3
May	266	230	229	204	-2,9	10,0	-8,4	-1,4
June	247	222	206	241	-7,1	-3,5	-10,0	18,1
July	257	198	217	251	4,0	-10,8	5,3	4,1
August	279	194	205		8,6	-2,0	-5,5	
September	274	212	213		-1,8	9,3	3,9	
October	264	214	224		-3,6	0,9	5,2	
November	267	212	210		1,1	-0,9	-6,3	
December	255	257	208		-4,5	21,2	-1,0	

## Explanatory notes

- Introduction** 1 Statistics South Africa (Stats SA) collects administrative information on liquidations from Companies and Intellectual Property Commission, Department of Trade and Industry, while information on insolvencies is gathered from Notices of the Master of the Supreme Court that appear in the Government Gazette.
- 2 This statistical release reflects voluntary and compulsory liquidations of companies and close corporations and insolvencies of individuals and partnerships.
- Purpose of the survey** 3 The aggregated data in this release are used by the private and public sectors to measure economic performance and are also an important indicator of the scope of unpaid debt in South Africa.
- 4 Due to insolvencies figures being available late, the data on insolvencies are published a month later than liquidations.
- Scope of the survey** 5 This survey covers the total number of:
- companies and close corporations which were liquidated; and
  - individuals and partnerships placed under final sequestration.
- Symbols and abbreviations** 6 Stats SA – Statistics South Africa
- Seasonal adjustment** 7 Seasonally adjusted estimates are generated each month using the X-12-ARIMA Seasonal Adjustment Program developed by the US Bureau of the Census, 1968. Seasonal adjustment is a means of removing the estimated effects of normal seasonal variation from the series so that the effects of other influences on the series can be recognised more clearly. Seasonal adjustment does not aim to remove irregular or non-seasonal influences which may be present in any particular month.
- 8 Influences that are volatile or unsystematic can still make it difficult to interpret the movement of the series even after adjustment for seasonal variations. This means the month-to-month movements of seasonally adjusted estimates may not be reliable indicators of trend behaviour. The X-12-ARIMA procedure for liquidations and insolvencies is described in more detail on the Stats SA website:  
[click to download seasonal adjustment P0043 March 2017](#)
- Trend cycle** 9 The trend is the long-term pattern or movement of a time series. The X-12- ARIMA Seasonal Adjustment Program is used for smoothing seasonally adjusted estimates to estimate the underlying trend cycle.

## Glossary

- Compulsory liquidation** A compulsory liquidation takes place when the affairs of a company or close corporation are wound up by order of the court.
- Insolvency** Insolvency refers to an individual or partnership which is unable to pay its debt and is placed under final sequestration. The number of insolvencies does not refer to the number of persons involved, as a partnership which is unable to pay its debt is regarded as one insolvency, irrespective of the number of partners.
- Liquidation** Liquidation refers to the winding-up of the affairs of a company or close corporation when liabilities exceed assets and it can be resolved by voluntary action or by an order of the court.
- Voluntary liquidation** A voluntary liquidation takes place when a company or close corporation, by own choice, resolves to wind-up its affairs.

## Technical enquiries

**JP Terblanche** Telephone number: (012) 310 2965  
Email: [juan-pierret@statssa.gov.za](mailto:juan-pierret@statssa.gov.za)

**Sinethemba Mhlongo** Telephone number: (012) 310 3382  
Email: [sinethemban@statssa.gov.za](mailto:sinethemban@statssa.gov.za)

## General information

Stats SA publishes approximately 300 different statistical releases each year. It is not economically viable to produce them in more than one of South Africa's eleven official languages. Since the releases are used extensively, not only locally but also by international economic and social-scientific communities, Stats SA releases are published in English only.

Stats SA has copyright on this publication. Users may apply the information as they wish, provided that they acknowledge Stats SA as the source of the basic data wherever they process, apply, utilise, publish or distribute the data; and also that they specify that the relevant application and analysis (where applicable) result from their own processing of the data.

## Stats SA products

A complete set of Stats SA publications is available at the Stats SA library and the following libraries:

National Library of South Africa, Pretoria Division  
National Library of South Africa, Cape Town Division  
Natal Society Library, Pietermaritzburg  
Library of Parliament, Cape Town  
Bloemfontein Public Library  
Johannesburg Public Library  
Eastern Cape Library Services, King William's Town  
Central Regional Library, Polokwane  
Central Reference Library, Mbombela  
Central Reference Collection, Kimberley  
Central Reference Library, Mmabatho

Stats SA also provides a subscription service.

## Electronic services

A large range of data is available via online services. For more detail about our electronic services, contact Stats SA's user information service at (012) 310 8600.

You can visit us on the Internet at: [www.statssa.gov.za](http://www.statssa.gov.za)

## General enquiries

User information services Telephone number: (012) 310 8600  
Email address: [info@statssa.gov.za](mailto:info@statssa.gov.za)

Postal address Private Bag X44, Pretoria, 0001

*Produced by Stats SA*