



The South Africa I know, the home I understand



Statistical release

P0043

Statistics of liquidations and insolvencies (Preliminary)

August 2014

**Embargoed until:
22 September 2014
14:30**

Enquiries:

User Information Services
Tel: (012) 310 8600

Forthcoming issue:

September 2014

Expected release date:

27 October 2014

Contents

| | |
|---|-----------|
| Liquidations: results for August 2014 | 2 |
| Table A – Number of liquidations..... | 2 |
| Figure 1 – Number of liquidations..... | 2 |
| Insolvencies: results for July 2014 | 3 |
| Table B – Number of insolvencies..... | 3 |
| Figure 2 – Number of insolvencies | 3 |
| Tables | 4 |
| Table 1 – Total liquidations according to industry (number) | 4 |
| Table 1.1 – Liquidations of companies according to industry (number) | 4 |
| Table 1.2 – Liquidations of close corporations according to industry (number) | 4 |
| Table 2 – Total liquidations (number) | 5 |
| Table 2.1 – Compulsory liquidations (number)..... | 5 |
| Table 2.2 – Voluntary liquidations (number)..... | 5 |
| Table 3 – Total liquidations of companies (number)..... | 6 |
| Table 3.1 – Compulsory liquidations of companies (number)..... | 6 |
| Table 3.2 – Voluntary liquidations of companies (number)..... | 6 |
| Table 4 – Total liquidations of close corporations (number) | 7 |
| Table 4.1 – Compulsory liquidations of close corporations (number)..... | 7 |
| Table 4.2 – Voluntary liquidations of close corporations (number)..... | 7 |
| Table 5 – Insolvencies of individuals and partnerships (number)..... | 8 |
| Explanatory notes | 9 |
| Glossary | 9 |
| General information | 10 |

Liquidations: results for August 2014

Table A – Number of liquidations

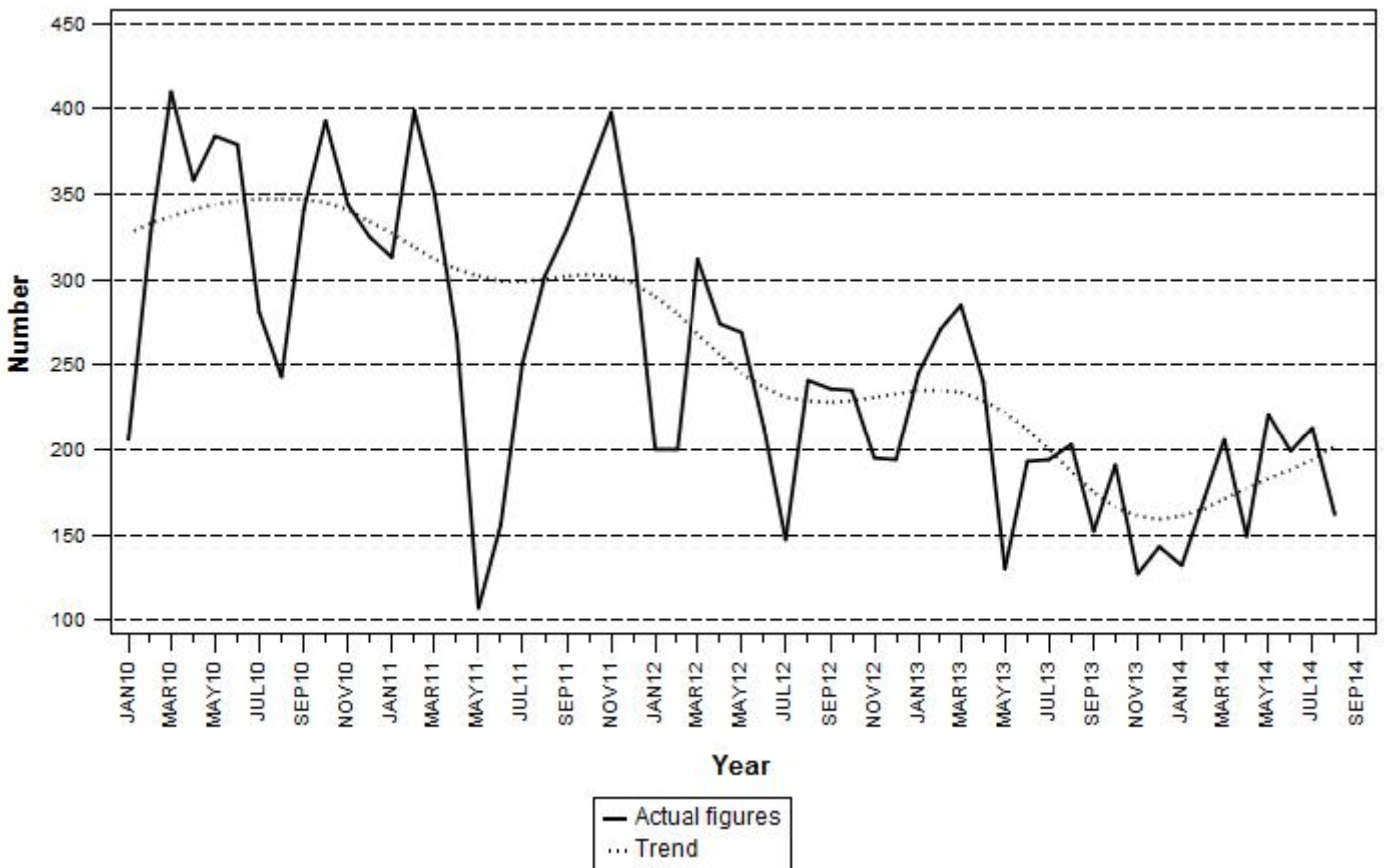
| Number of liquidations August 2014 | % change between August 2013 and August 2014 | % change between June to August 2013 and June to August 2014 | % change between January to August 2013 and January to August 2014 |
|------------------------------------|--|--|--|
| 162 | -20,2 | -2,7 | -17,5 |

The number of liquidations decreased by 20,2% year-on-year in August 2014. The number of voluntary liquidations decreased by 47, while compulsory liquidations increased by 6 over this period.

The largest year-on-year decrease in liquidations in August 2014 was related to wholesale and retail trade, catering and accommodation (26 fewer liquidations).

The number of liquidations decreased by 17,5% in the first eight months of 2014 compared with the first eight months of 2013.

Figure 1 – Number of liquidations



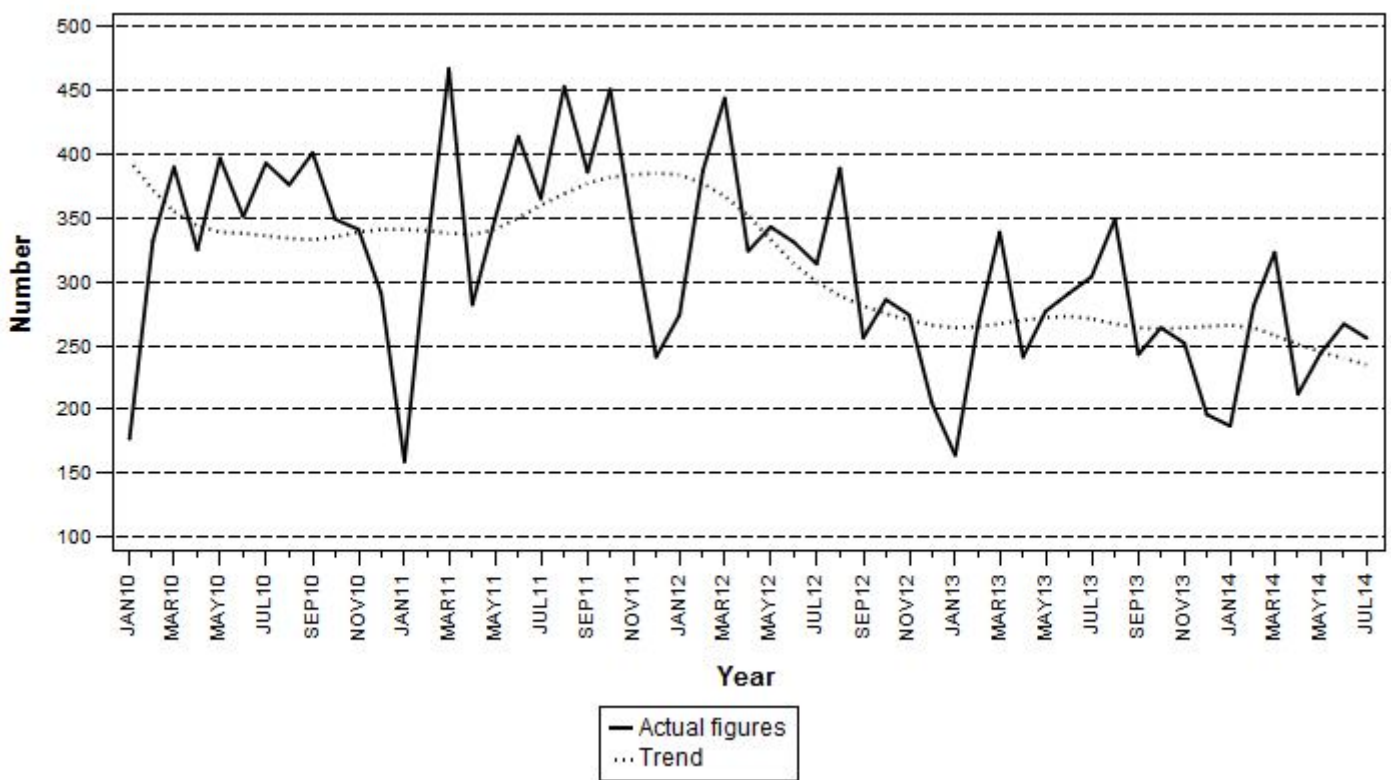
Insolvencies: results for July 2014

Table B – Number of insolvencies

| Number of insolvencies July 2014 | % change between July 2013 and July 2014 | % change between May to July 2013 and May to July 2014 | % change between January to July 2013 and January to July 2014 |
|----------------------------------|--|--|--|
| 256 | -15,8 | -12,0 | -6,1 |

The number of insolvencies decreased by 15,8% in July 2014 compared with July 2013. A 12,0% decrease was estimated between the three months ended July 2013 and the three months ended July 2014. There was a decrease of 6,1% in the first seven months of 2014 compared with the first seven months of 2013.

Figure 2 – Number of insolvencies



PJ Lehohla
Statistician-General

Tables

Table 1 – Total liquidations according to industry (number)

| Industry | January - August 2014 | | | August 2013 | | | July 2014 | | | August 2014 | | |
|--|-----------------------|--------------|--------------|-------------|------------|------------|-----------|------------|------------|-------------|------------|------------|
| | C | V | Total | C | V | Total | C | V | Total | C | V | Total |
| 1.Agriculture, hunting, forestry and fishing | 10 | 5 | 15 | 0 | 2 | 2 | 3 | 1 | 4 | 4 | 0 | 4 |
| 2.Mining and quarrying | 3 | 7 | 10 | 1 | 0 | 1 | 0 | 1 | 1 | 1 | 0 | 1 |
| 3.Manufacturing | 16 | 63 | 79 | 2 | 11 | 13 | 0 | 6 | 6 | 1 | 6 | 7 |
| 4.Electricity, gas and water | 3 | 10 | 13 | 0 | 1 | 1 | 0 | 1 | 1 | 0 | 1 | 1 |
| 5.Construction | 16 | 55 | 71 | 0 | 12 | 12 | 0 | 5 | 5 | 3 | 3 | 6 |
| 6.Wholesale and retail trade, catering and accommodation | 56 | 267 | 323 | 6 | 50 | 56 | 15 | 41 | 56 | 3 | 27 | 30 |
| 7.Transport, storage, communication | 9 | 58 | 67 | 0 | 5 | 5 | 0 | 2 | 2 | 1 | 5 | 6 |
| 8.Financing, insurance, real estate, business services | 122 | 474 | 596 | 9 | 71 | 80 | 20 | 72 | 92 | 12 | 64 | 76 |
| 9.Community, social, personal services | 42 | 237 | 279 | 1 | 32 | 33 | 9 | 37 | 46 | 0 | 31 | 31 |
| Total number of liquidations | 277 | 1 176 | 1 453 | 19 | 184 | 203 | 47 | 166 | 213 | 25 | 137 | 162 |

Table 1.1 – Liquidations of companies according to industry (number)

| Industry | January - August 2014 | | | August 2013 | | | July 2014 | | | August 2014 | | |
|--|-----------------------|------------|------------|-------------|-----------|-----------|-----------|-----------|------------|-------------|-----------|-----------|
| | C | V | Total | C | V | Total | C | V | Total | C | V | Total |
| 1.Agriculture, hunting, forestry and fishing | 7 | 4 | 11 | 0 | 1 | 1 | 1 | 1 | 2 | 4 | 0 | 4 |
| 2.Mining and quarrying | 1 | 7 | 8 | 1 | 0 | 1 | 0 | 1 | 1 | 1 | 0 | 1 |
| 3.Manufacturing | 8 | 24 | 32 | 1 | 3 | 4 | 0 | 4 | 4 | 1 | 2 | 3 |
| 4.Electricity, gas and water | 2 | 3 | 5 | 0 | 0 | 0 | 0 | 0 | 0 | 0 | 1 | 1 |
| 5.Construction | 6 | 15 | 21 | 0 | 1 | 1 | 0 | 0 | 0 | 1 | 1 | 2 |
| 6.Wholesale and retail trade, catering and accommodation | 28 | 93 | 121 | 4 | 24 | 28 | 8 | 13 | 21 | 1 | 8 | 9 |
| 7.Transport, storage, communication | 4 | 29 | 33 | 0 | 1 | 1 | 0 | 1 | 1 | 0 | 1 | 1 |
| 8.Financing, insurance, real estate, business services | 87 | 231 | 318 | 4 | 41 | 45 | 14 | 36 | 50 | 12 | 35 | 47 |
| 9.Community, social, personal services | 30 | 156 | 186 | 1 | 15 | 16 | 3 | 27 | 30 | 0 | 18 | 18 |
| Total number of liquidations | 173 | 562 | 735 | 11 | 86 | 97 | 26 | 83 | 109 | 20 | 66 | 86 |

Table 1.2 – Liquidations of close corporations according to industry (number)

| Industry | January - August 2014 | | | August 2013 | | | July 2014 | | | August 2014 | | |
|--|-----------------------|------------|------------|-------------|-----------|------------|-----------|-----------|------------|-------------|-----------|-----------|
| | C | V | Total | C | V | Total | C | V | Total | C | V | Total |
| 1.Agriculture, hunting, forestry and fishing | 3 | 1 | 4 | 0 | 1 | 1 | 2 | 0 | 2 | 0 | 0 | 0 |
| 2.Mining and quarrying | 2 | 0 | 2 | 0 | 0 | 0 | 0 | 0 | 0 | 0 | 0 | 0 |
| 3.Manufacturing | 8 | 39 | 47 | 1 | 8 | 9 | 0 | 2 | 2 | 0 | 4 | 4 |
| 4.Electricity, gas and water | 1 | 7 | 8 | 0 | 1 | 1 | 0 | 1 | 1 | 0 | 0 | 0 |
| 5.Construction | 10 | 40 | 50 | 0 | 11 | 11 | 0 | 5 | 5 | 2 | 2 | 4 |
| 6.Wholesale and retail trade, catering and accommodation | 28 | 174 | 202 | 2 | 26 | 28 | 7 | 28 | 35 | 2 | 19 | 21 |
| 7.Transport, storage, communication | 5 | 29 | 34 | 0 | 4 | 4 | 0 | 1 | 1 | 1 | 4 | 5 |
| 8.Financing, insurance, real estate, business services | 35 | 243 | 278 | 5 | 30 | 35 | 6 | 36 | 42 | 0 | 29 | 29 |
| 9.Community, social, personal services | 12 | 81 | 93 | 0 | 17 | 17 | 6 | 10 | 16 | 0 | 13 | 13 |
| Total number of liquidations | 104 | 614 | 718 | 8 | 98 | 106 | 21 | 83 | 104 | 5 | 71 | 76 |

C = Compulsory.
V = Voluntary.

Table 2 – Total liquidations (number)

| Month | 2008 | 2009 | 2010 | 2011 | 2012 | 2013 | 2014 |
|--------------|--------------|--------------|--------------|--------------|--------------|--------------|------|
| January | 160 | 270 | 206 | 313 | 200 | 245 | 132 |
| February | 230 | 391 | 328 | 399 | 200 | 271 | 171 |
| March | 297 | 347 | 410 | 350 | 312 | 285 | 206 |
| April | 247 | 349 | 358 | 267 | 274 | 240 | 149 |
| May | 265 | 283 | 384 | 107 | 269 | 130 | 221 |
| June | 233 | 311 | 379 | 156 | 213 | 193 | 199 |
| July | 320 | 428 | 281 | 251 | 147 | 194 | 213 |
| August | 285 | 264 | 243 | 302 | 241 | 203 | 162 |
| September | 328 | 334 | 341 | 330 | 236 | 152 | |
| October | 348 | 287 | 393 | 363 | 235 | 191 | |
| November | 240 | 487 | 344 | 398 | 195 | 127 | |
| December | 347 | 382 | 325 | 323 | 194 | 143 | |
| Total | 3 300 | 4 133 | 3 992 | 3 559 | 2 716 | 2 374 | |

Table 2.1 – Compulsory liquidations (number)

| Month | 2008 | 2009 | 2010 | 2011 | 2012 | 2013 | 2014 |
|--------------|------------|------------|------------|------------|------------|------------|------|
| January | 29 | 54 | 3 | 45 | 61 | 3 | 22 |
| February | 15 | 26 | 19 | 26 | 27 | 26 | 12 |
| March | 41 | 10 | 23 | 12 | 39 | 53 | 18 |
| April | 22 | 41 | 17 | 16 | 4 | 17 | 35 |
| May | 26 | 26 | 30 | 30 | 3 | 9 | 29 |
| June | 17 | 20 | 12 | 2 | 14 | 16 | 89 |
| July | 13 | 37 | 35 | 8 | 1 | 18 | 47 |
| August | 26 | 49 | 22 | 14 | 63 | 19 | 25 |
| September | 22 | 2 | 20 | 18 | 58 | 13 | |
| October | 48 | 17 | 49 | 61 | 21 | 9 | |
| November | 15 | 12 | 20 | 74 | 18 | 4 | |
| December | 2 | 1 | 34 | 75 | 8 | 24 | |
| Total | 276 | 295 | 284 | 381 | 317 | 211 | |

Table 2.2 – Voluntary liquidations (number)

| Month | 2008 | 2009 | 2010 | 2011 | 2012 | 2013 | 2014 |
|--------------|--------------|--------------|--------------|--------------|--------------|--------------|------|
| January | 131 | 216 | 203 | 268 | 139 | 242 | 110 |
| February | 215 | 365 | 309 | 373 | 173 | 245 | 159 |
| March | 256 | 337 | 387 | 338 | 273 | 232 | 188 |
| April | 225 | 308 | 341 | 251 | 270 | 223 | 114 |
| May | 239 | 257 | 354 | 77 | 266 | 121 | 192 |
| June | 216 | 291 | 367 | 154 | 199 | 177 | 110 |
| July | 307 | 391 | 246 | 243 | 146 | 176 | 166 |
| August | 259 | 215 | 221 | 288 | 178 | 184 | 137 |
| September | 306 | 332 | 321 | 312 | 178 | 139 | |
| October | 300 | 270 | 344 | 302 | 214 | 182 | |
| November | 225 | 475 | 324 | 324 | 177 | 123 | |
| December | 345 | 381 | 291 | 248 | 186 | 119 | |
| Total | 3 024 | 3 838 | 3 708 | 3 178 | 2 399 | 2 163 | |

Table 3 – Total liquidations of companies (number)

| Month | 2008 | 2009 | 2010 | 2011 | 2012 | 2013 | 2014 |
|--------------|--------------|--------------|--------------|--------------|--------------|--------------|------|
| January | 87 | 114 | 96 | 156 | 97 | 121 | 74 |
| February | 117 | 229 | 161 | 199 | 75 | 123 | 87 |
| March | 108 | 152 | 177 | 145 | 115 | 147 | 89 |
| April | 104 | 148 | 176 | 97 | 105 | 104 | 78 |
| May | 108 | 109 | 203 | 36 | 130 | 56 | 108 |
| June | 100 | 147 | 194 | 52 | 105 | 96 | 104 |
| July | 170 | 201 | 128 | 81 | 74 | 92 | 109 |
| August | 98 | 100 | 93 | 180 | 133 | 97 | 86 |
| September | 177 | 162 | 136 | 190 | 136 | 82 | |
| October | 165 | 136 | 204 | 167 | 109 | 100 | |
| November | 111 | 161 | 174 | 152 | 72 | 55 | |
| December | 228 | 230 | 197 | 151 | 108 | 75 | |
| Total | 1 573 | 1 889 | 1 939 | 1 606 | 1 259 | 1 148 | |

Table 3.1 – Compulsory liquidations of companies (number)

| Month | 2008 | 2009 | 2010 | 2011 | 2012 | 2013 | 2014 |
|--------------|------------|------------|------------|------------|------------|------------|------|
| January | 8 | 18 | 3 | 18 | 37 | 3 | 16 |
| February | 15 | 11 | 12 | 16 | 11 | 5 | 7 |
| March | 10 | 8 | 19 | 12 | 11 | 32 | 6 |
| April | 8 | 27 | 13 | 0 | 2 | 10 | 24 |
| May | 17 | 9 | 24 | 3 | 3 | 7 | 20 |
| June | 6 | 14 | 3 | 1 | 14 | 11 | 54 |
| July | 4 | 20 | 25 | 4 | 0 | 9 | 26 |
| August | 6 | 10 | 11 | 0 | 34 | 11 | 20 |
| September | 3 | 1 | 3 | 18 | 41 | 9 | |
| October | 34 | 10 | 38 | 59 | 14 | 4 | |
| November | 10 | 3 | 15 | 42 | 6 | 2 | |
| December | 1 | 0 | 30 | 47 | 2 | 14 | |
| Total | 122 | 131 | 196 | 220 | 175 | 117 | |

Table 3.2 – Voluntary liquidations of companies (number)

| Month | 2008 | 2009 | 2010 | 2011 | 2012 | 2013 | 2014 |
|--------------|--------------|--------------|--------------|--------------|--------------|--------------|------|
| January | 79 | 96 | 93 | 138 | 60 | 118 | 58 |
| February | 102 | 218 | 149 | 183 | 64 | 118 | 80 |
| March | 98 | 144 | 158 | 133 | 104 | 115 | 83 |
| April | 96 | 121 | 163 | 97 | 103 | 94 | 54 |
| May | 91 | 100 | 179 | 33 | 127 | 49 | 88 |
| June | 94 | 133 | 191 | 51 | 91 | 85 | 50 |
| July | 166 | 181 | 103 | 77 | 74 | 83 | 83 |
| August | 92 | 90 | 82 | 180 | 99 | 86 | 66 |
| September | 174 | 161 | 133 | 172 | 95 | 73 | |
| October | 131 | 126 | 166 | 108 | 95 | 96 | |
| November | 101 | 158 | 159 | 110 | 66 | 53 | |
| December | 227 | 230 | 167 | 104 | 106 | 61 | |
| Total | 1 451 | 1 758 | 1 743 | 1 386 | 1 084 | 1 031 | |

Table 4 – Total liquidations of close corporations (number)

| Month | 2008 | 2009 | 2010 | 2011 | 2012 | 2013 | 2014 |
|--------------|--------------|--------------|--------------|--------------|--------------|--------------|------|
| January | 73 | 156 | 110 | 157 | 103 | 124 | 58 |
| February | 113 | 162 | 167 | 200 | 125 | 148 | 84 |
| March | 189 | 195 | 233 | 205 | 197 | 138 | 117 |
| April | 143 | 201 | 182 | 170 | 169 | 136 | 71 |
| May | 157 | 174 | 181 | 71 | 139 | 74 | 113 |
| June | 133 | 164 | 185 | 104 | 108 | 97 | 95 |
| July | 150 | 227 | 153 | 170 | 73 | 102 | 104 |
| August | 187 | 164 | 150 | 122 | 108 | 106 | 76 |
| September | 151 | 172 | 205 | 140 | 100 | 70 | |
| October | 183 | 151 | 189 | 196 | 126 | 91 | |
| November | 129 | 326 | 170 | 246 | 123 | 72 | |
| December | 119 | 152 | 128 | 172 | 86 | 68 | |
| Total | 1 727 | 2 244 | 2 053 | 1 953 | 1 457 | 1 226 | |

Table 4.1 – Compulsory liquidations of close corporations (number)

| Month | 2008 | 2009 | 2010 | 2011 | 2012 | 2013 | 2014 |
|--------------|------------|------------|-----------|------------|------------|-----------|------|
| January | 21 | 36 | 0 | 27 | 24 | 0 | 6 |
| February | 0 | 15 | 7 | 10 | 16 | 21 | 5 |
| March | 31 | 2 | 4 | 0 | 28 | 21 | 12 |
| April | 14 | 14 | 4 | 16 | 2 | 7 | 11 |
| May | 9 | 17 | 6 | 27 | 0 | 2 | 9 |
| June | 11 | 6 | 9 | 1 | 0 | 5 | 35 |
| July | 9 | 17 | 10 | 4 | 1 | 9 | 21 |
| August | 20 | 39 | 11 | 14 | 29 | 8 | 5 |
| September | 19 | 1 | 17 | 0 | 17 | 4 | |
| October | 14 | 7 | 11 | 2 | 7 | 5 | |
| November | 5 | 9 | 5 | 32 | 12 | 2 | |
| December | 1 | 1 | 4 | 28 | 6 | 10 | |
| Total | 154 | 164 | 88 | 161 | 142 | 94 | |

Table 4.2 – Voluntary liquidations of close corporations (number)

| Month | 2008 | 2009 | 2010 | 2011 | 2012 | 2013 | 2014 |
|--------------|--------------|--------------|--------------|--------------|--------------|--------------|------|
| January | 52 | 120 | 110 | 130 | 79 | 124 | 52 |
| February | 113 | 147 | 160 | 190 | 109 | 127 | 79 |
| March | 158 | 193 | 229 | 205 | 169 | 117 | 105 |
| April | 129 | 187 | 178 | 154 | 167 | 129 | 60 |
| May | 148 | 157 | 175 | 44 | 139 | 72 | 104 |
| June | 122 | 158 | 176 | 103 | 108 | 92 | 60 |
| July | 141 | 210 | 143 | 166 | 72 | 93 | 83 |
| August | 167 | 125 | 139 | 108 | 79 | 98 | 71 |
| September | 132 | 171 | 188 | 140 | 83 | 66 | |
| October | 169 | 144 | 178 | 194 | 119 | 86 | |
| November | 124 | 317 | 165 | 214 | 111 | 70 | |
| December | 118 | 151 | 124 | 144 | 80 | 58 | |
| Total | 1 573 | 2 080 | 1 965 | 1 792 | 1 315 | 1 132 | |

Table 5 – Insolvencies of individuals and partnerships (number)

| Month | 2008 | 2009 | 2010 | * 2011 | * 2012 | 1/ 2013 | 1/ 2014 |
|--------------|--------------|--------------|--------------|---------------|---------------|----------------|----------------|
| January | 118 | 196 | 177 | 159 | 274 | 164 | 187 |
| February | 295 | 378 | 332 | 330 | 387 | 269 | 281 |
| March | 288 | 536 | * 390 | 467 | 444 | 339 | 323 |
| April | 396 | 531 | 325 | 282 | 324 | 241 | 212 |
| May | 338 | 612 | 397 | 349 | 343 | 277 | 244 |
| June | 425 | 613 | 351 | 414 | 331 | 291 | 267 |
| July | 473 | 594 | 393 | 365 | 314 | 304 | 256 |
| August | 502 | 694 | * 376 | 453 | 389 | 349 | |
| September | 459 | 485 | 401 | 386 | 256 | 243 | |
| October | 589 | 450 | * 349 | 451 | 286 | 264 | |
| November | 453 | 520 | 341 | 339 | 274 | 252 | |
| December | 427 | 469 | 291 | 241 | 205 | 196 | |
| Total | 4 763 | 6 078 | 4 123 | 4 236 | 3 827 | 3 189 | |

* Revised.

1/ Preliminary.

Explanatory notes

- | | | |
|----------------------------------|----------|--|
| Introduction | 1 | Statistics South Africa (Stats SA) collects administrative information on liquidations from Companies and Intellectual Property Commission, Department of Trade and Industry, while information on insolvencies is gathered from Notices of the Master of the Supreme Court that appear in the Government Gazette. |
| | 2 | This statistical release reflects voluntary and compulsory liquidations of companies and close corporations and insolvencies of individuals and partnerships. |
| Purpose of the survey | 3 | The aggregated data in this release are used by the private and public sectors to measure economic performance and are also an important indicator of the scope of unpaid debt in South Africa. |
| | 4 | Due to insolvencies figures being available late, the data on insolvencies are published a month later than liquidations. |
| Scope of the survey | 5 | This survey covers the total number of: <ul style="list-style-type: none"> • companies and close corporations which were liquidated; and • individuals and partnerships placed under final sequestration. |
| Related publications | 6 | Users may also wish to refer to the following publications which are available from Stats SA: <ul style="list-style-type: none"> • <i>Bulletin of Statistics</i>; and • <i>South African Statistics</i>. |
| Symbols and abbreviations | 7 | Stats SA – Statistics South Africa |

Glossary

- | | |
|-------------------------------|---|
| Compulsory liquidation | A compulsory liquidation takes place when the affairs of a company or close corporation are wound up by order of the court. |
| Insolvency | Insolvency refers to an individual or partnership which is unable to pay its debt and is placed under final sequestration. The number of insolvencies does not refer to the number of persons involved, as a partnership which is unable to pay its debt is regarded as one insolvency, irrespective of the number of partners. |
| Liquidation | Liquidation refers to the winding-up of the affairs of a company or close corporation when liabilities exceed assets and it can be resolved by voluntary action or by an order of the court. |
| Voluntary liquidation | A voluntary liquidation takes place when a company or close corporation, by own choice, resolves to wind-up its affairs. |

General information

Stats SA publishes approximately 300 different statistical releases each year. It is not economically viable to produce them in more than one of South Africa's eleven official languages. Since the releases are used extensively, not only locally but also by international economic and social-scientific communities, Stats SA releases are published in English only.

Stats SA has copyright on this publication. Users may apply the information as they wish, provided that they acknowledge Stats SA as the source of the basic data wherever they process, apply, utilise, publish or distribute the data; and also that they specify that the relevant application and analysis (where applicable) result from their own processing of the data.

Stats SA products

A complete set of Stats SA publications is available at the Stats SA library and the following libraries:

National Library of South Africa, Pretoria Division
National Library of South Africa, Cape Town Division
Natal Society Library, Pietermaritzburg
Library of Parliament, Cape Town
Bloemfontein Public Library
Johannesburg Public Library
Eastern Cape Library Services, King William's Town
Central Regional Library, Polokwane
Central Reference Library, Mbombela
Central Reference Collection, Kimberley
Central Reference Library, Mmabatho

Stats SA also provides a subscription service.

Electronic services

A large range of data is available via online services. For more detail about our electronic services, contact Stats SA's user information service at (012) 310 8600.

You can visit us on the Internet at: www.statssa.gov.za

Enquiries

Telephone number: (012) 310 4897 (technical enquiries)
(012) 310 8600 (user information services)
(012) 310 8044 (orders/subscription services)

Fax number: (012) 310 8332 (technical enquiries)

email: onicama@statssa.gov.za (technical enquiries)
info@statssa.gov.za (user information services)
magdaj@statssa.gov.za (orders/subscription services)

Postal address: Private Bag X44, Pretoria, 0001

Produced by Stats SA