



**Statistics
South Africa**

Preferred supplier of quality statistics



Statistical release

P0043

Statistics of liquidations and insolvencies (Preliminary)

April 2010

**Embargoed until:
24 May 2010
14:30**

Enquiries

User Information Services

Tel: (012) 310 8600/4892/8390

Forthcoming issue | Expected release date

May 2010

28 June 2010

Statistics South Africa • Mbalo- mbalo ya Afrika Tshipembe • Vuhlayisatnhlayo bya Afrika-Dzonga • Dipalopalo tsa Aforika Borwa • Ezezibalo zaseNingizimu Afrika
Dipalopalo tsa Afrika Borwa • Dipalopalo tsa Afrika Borwa • Ubalo lwaseMzantsi Afrika • Telubalo eNingizimu Afrika • iNanimbalo leSewula Afrika • Statistiek Suid-Afrika

email: info@statssa.gov.za
www.statssa.gov.za

170 Andries Street • Private Bag X44, 0001 Pretoria, South Africa
Tel: +27(12) 310 8911, Fax: +27(12) 321 7381

Contents	Page
SUMMARY OF FINDINGS: LIQUIDATIONS AND INSOLVENCIES	2
Detailed results: Tables	4
Table 1 – Total number of liquidations according to industry	4
Table 1.1 – Number of liquidations of companies according to industry	4
Table 1.2 – Number of liquidations of close corporations according to industry.....	4
Table 2 – Total number of liquidations: 2004 to 2010	5
Table 2.1 – Total number of compulsory liquidations: 2004 to 2010	5
Table 2.2 – Total number of voluntary liquidations: 2004 to 2010.....	5
Table 3 – Number of liquidations of companies: 2004 to 2010	6
Table 3.1 – Number of compulsory liquidations of companies: 2004 to 2010	6
Table 3.2 – Number of voluntary liquidations of companies: 2004 to 2010.....	6
Table 4 – Number of liquidations of close corporations: 2004 to 2010.....	7
Table 4.1 – Number of compulsory liquidations of close corporations: 2004 to 2010	7
Table 4.2 – Number of voluntary liquidations of close corporations: 2004 to 2010	7
Table 5 – Total number of insolvencies of individuals and partnerships: 2004 to 2010	8
Table 6 – Percentage change between April 2009 and April 2010 regarding the number of liquidations.....	8
Table 7 – Percentage change between the first four of 2009 and the first four months of 2010 regarding the number of liquidations.....	8
Table 8 – Percentage change between March 2009 and March 2010 regarding the number of insolvencies.....	8
Table 9 – Percentage change between the first quarter of 2009 and the first quarter of 2010 regarding the number of insolvencies	8
Explanatory notes	9
Glossary.....	9
General information	10

SUMMARY OF FINDINGS: LIQUIDATIONS AND INSOLVENCIES

Key findings regarding liquidations for April 2010

Table A – Selected key figures regarding liquidations for April 2010

Number of liquidations April 2010	% change between April 2009 and April 2010	% change between February to April 2009 and February to April 2010	% change between January to April 2009 and January to April 2010
358	2,6	0,8	-4,1

Total number of liquidations

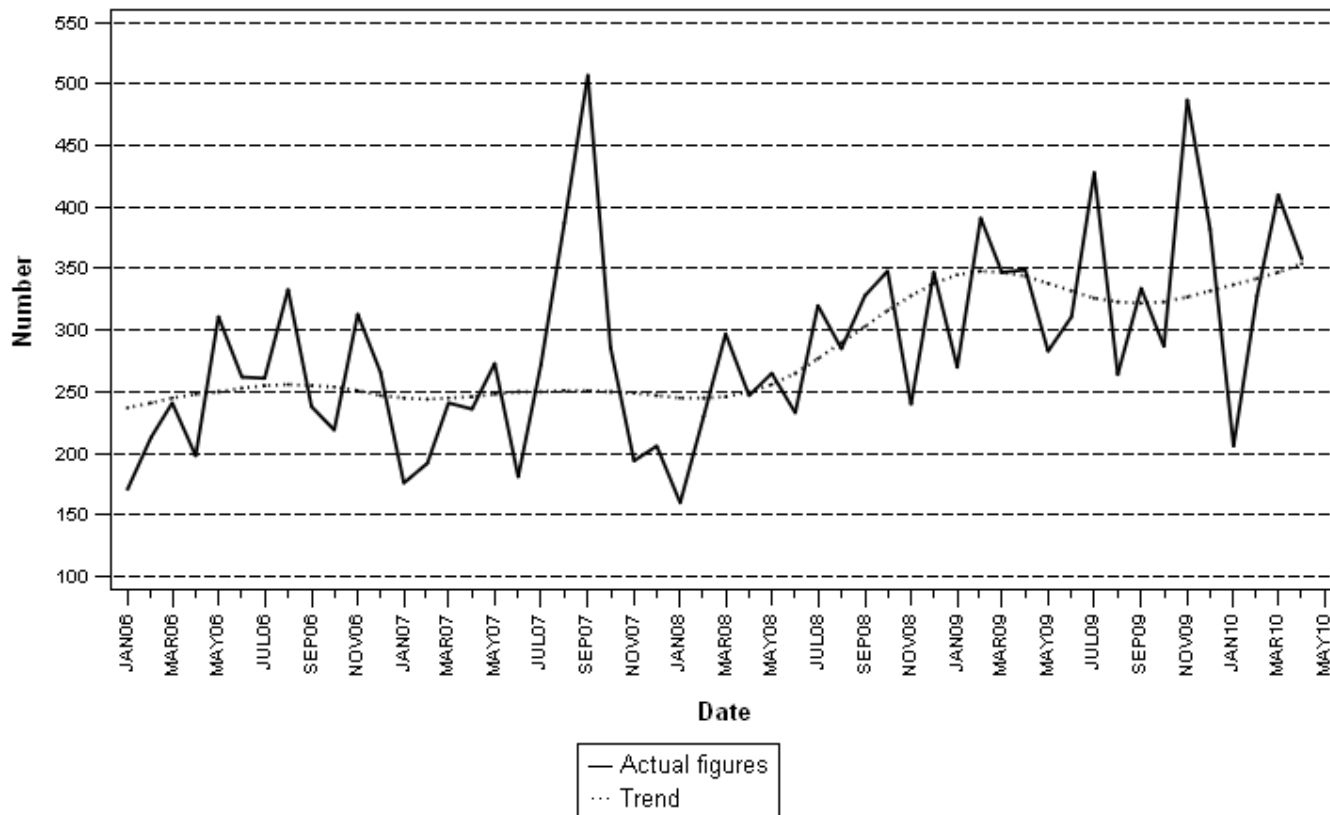
The total number of liquidations recorded for the three months ended April 2010 increased by 0,8% (from 1 087 to 1 096) compared with the three months ended April 2009. The total number of liquidations recorded for April 2010 increased by 2,6% (from 349 to 358) compared with April 2009 (see Table A and Table 6).

The 0,8% increase in the total number of liquidations for the three months ended April 2010 was due to an increase of 2,7% in voluntary liquidations (from 1 010 to 1 037) (see Table 2.2). Although there was a decrease of 2,8% in company liquidations (from 529 to 514) during this period, an increase of 4,3% was recorded in close corporation liquidations (from 558 to 582) (see Tables 3 and 4).

The highest number of liquidations during the first four months of 2010 related to businesses in the financing, insurance, real estate, business services industry (562 cases or 43,2% of liquidations) and the wholesale and retail trade, catering and accommodation industry (385 cases or 29,6% of liquidations) (see Table 1).

Figure 1 outlines the trend in the total number of liquidations from January 2006 to April 2010.

Figure 1 – Total number of liquidations



Key findings regarding insolvencies for March 2010

Table B – Selected key figures regarding insolvencies for March 2010

Actual estimates

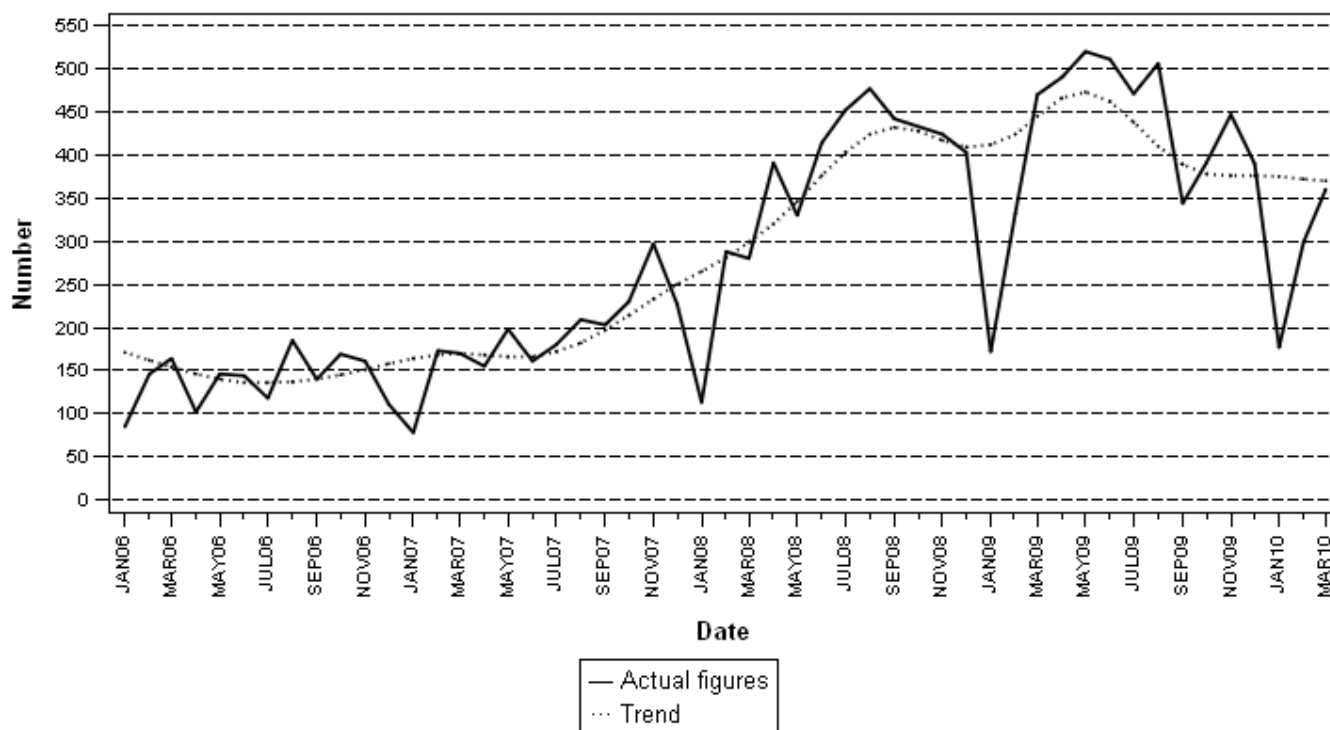
Estimated number of insolvencies March 2010	% change between March 2009 and March 2010	% change between January to March 2009 and January to March 2010
360	-23,4	-14,2

Total number of insolvencies

The total number of insolvencies for the first quarter of 2010 decreased by 14,2% (from 974 to 836) compared with the first quarter of 2009. The estimated number of insolvencies for March 2010 decreased by 23,4% (from 470 to 360) compared with March 2009 (see Table B and Tables 8 and 9).

Figure 2 outlines the trend in the total number of insolvencies from January 2006 to March 2010.

Figure 2 – Total number of insolvencies



P J Lehohla
Statistician-General

Detailed results: Tables

Table 1 – Total number of liquidations according to industry

Industry	January - April 2010			April 2009			March 2010			April 2010		
	C	V	Total	C	V	Total	C	V	Total	C	V	Total
1.Agriculture, hunting, forestry and fishing	4	18	22	2	7	9	2	6	8	1	4	5
2.Mining and quarrying	1	7	8	0	1	1	0	0	0	0	0	0
3.Manufacturing	5	62	67	5	9	14	3	16	19	1	20	21
4.Electricity, gas and water	0	2	2	0	1	1	0	1	1	0	1	1
5.Construction	1	86	87	0	26	26	0	28	28	1	17	18
6.Wholesale and retail trade, catering and accommodation	18	367	385	17	92	109	10	128	138	4	94	98
7.Transport, storage, communication	1	41	42	1	9	10	0	21	21	0	2	2
8.Financing, insurance, real estate, business services	26	536	562	16	134	150	7	160	167	8	167	175
9.Community, social, personal services	6	121	127	0	29	29	1	27	28	2	36	38
Total number of liquidations	62	1 240	1 302	41	308	349	23	387	410	17	341	358

Table 1.1 – Number of liquidations of companies according to industry

Industry	January - April 2010			April 2009			March 2010			April 2010		
	C	V	Total	C	V	Total	C	V	Total	C	V	Total
1.Agriculture, hunting, forestry and fishing	4	9	13	2	4	6	2	4	6	1	0	1
2.Mining and quarrying	1	6	7	0	1	1	0	0	0	0	0	0
3.Manufacturing	1	21	22	4	3	7	0	2	2	1	6	7
4.Electricity, gas and water	0	0	0	0	0	0	0	0	0	0	0	0
5.Construction	0	9	9	0	3	3	0	0	0	0	5	5
6.Wholesale and retail trade, catering and accommodation	16	180	196	12	32	44	10	56	66	4	52	56
7.Transport, storage, communication	1	13	14	0	4	4	0	4	4	0	0	0
8.Financing, insurance, real estate, business services	19	287	306	9	64	73	6	84	90	5	90	95
9.Community, social, personal services	5	38	43	0	10	10	1	8	9	2	10	12
Total number of liquidations	47	563	610	27	121	148	19	158	177	13	163	176

Table 1.2 – Number of liquidations of close corporations according to industry

Industry	January - April 2010			April 2009			March 2010			April 2010		
	C	V	Total	C	V	Total	C	V	Total	C	V	Total
1.Agriculture, hunting, forestry and fishing	0	9	9	0	3	3	0	2	2	0	4	4
2.Mining and quarrying	0	1	1	0	0	0	0	0	0	0	0	0
3.Manufacturing	4	41	45	1	6	7	3	14	17	0	14	14
4.Electricity, gas and water	0	2	2	0	1	1	0	1	1	0	1	1
5.Construction	1	77	78	0	23	23	0	28	28	1	12	13
6.Wholesale and retail trade, catering and accommodation	2	187	189	5	60	65	0	72	72	0	42	42
7.Transport, storage, communication	0	28	28	1	5	6	0	17	17	0	2	2
8.Financing, insurance, real estate, business services	7	249	256	7	70	77	1	76	77	3	77	80
9.Community, social, personal services	1	83	84	0	19	19	0	19	19	0	26	26
Total number of liquidations	15	677	692	14	187	201	4	229	233	4	178	182

C = Compulsory.
V = Voluntary.

Table 2 – Total number of liquidations: 2004 to 2010

Month	2004	2005	2006	2007	2008	2009	2010
January	388	328	171	176	160	270	206
February	298	296	213	192	230	391	328
March	301	240	241	241	297	347	410
April	244	279	198	236	247	349	358
May	262	265	311	273	265	283	
June	301	265	262	181	233	311	
July	291	318	261	272	320	428	
August	260	273	333	387	285	264	
September	437	297	238	507	328	334	
October	253	234	219	286	348	287	
November	218	234	313	194	240	487	
December	257	196	266	206	347	382	
Year Total	3 510	3 225	3 026	3 151	3 300	4 133	

Table 2.1 – Total number of compulsory liquidations: 2004 to 2010

Month	2004	2005	2006	2007	2008	2009	2010
January	42	30	37	12	29	54	3
February	38	70	15	15	15	26	19
March	57	35	31	12	41	10	23
April	32	18	9	32	22	41	17
May	37	61	20	13	26	26	
June	63	25	50	9	17	20	
July	68	84	16	14	13	37	
August	39	69	46	111	26	49	
September	83	27	22	47	22	2	
October	43	40	20	39	48	17	
November	23	47	56	13	15	12	
December	39	18	53	9	2	1	
Year Total	564	524	375	326	276	295	

Table 2.2 – Total number of voluntary liquidations: 2004 to 2010

Month	2004	2005	2006	2007	2008	2009	2010
January	346	298	134	164	131	216	203
February	260	226	198	177	215	365	309
March	244	205	210	229	256	337	387
April	212	261	189	204	225	308	341
May	225	204	291	260	239	257	
June	238	240	212	172	216	291	
July	223	234	245	258	307	391	
August	221	204	287	276	259	215	
September	354	270	216	460	306	332	
October	210	194	199	247	300	270	
November	195	187	257	181	225	475	
December	218	178	213	197	345	381	
Year Total	2 946	2 701	2 651	2 825	3 024	3 838	

Table 3 – Number of liquidations of companies: 2004 to 2010

Month	2004	2005	2006	2007	2008	2009	2010
January	191	130	85	99	87	114	96
February	132	154	107	96	117	229	161
March	148	123	127	114	108	152	177
April	119	176	100	143	104	148	176
May	128	122	131	157	108	109	
June	136	132	140	104	100	147	
July	132	177	145	129	170	201	
August	114	124	143	243	98	100	
September	141	143	122	416	177	162	
October	126	115	132	175	165	136	
November	90	95	183	94	111	161	
December	75	113	167	127	228	230	
Year Total	1 532	1 604	1 582	1 897	1 573	1 889	

Table 3.1 – Number of compulsory liquidations of companies: 2004 to 2010

Month	2004	2005	2006	2007	2008	2009	2010
January	16	6	18	4	8	18	3
February	15	43	4	4	15	11	12
March	32	23	23	5	10	8	19
April	6	13	5	19	8	27	13
May	20	30	5	3	17	9	
June	16	7	35	2	6	14	
July	31	62	6	4	4	20	
August	11	21	11	89	6	10	
September	33	17	18	34	3	1	
October	22	22	13	26	34	10	
November	12	18	43	7	10	3	
December	9	13	37	8	1	0	
Year Total	223	275	218	205	122	131	

Table 3.2 – Number of voluntary liquidations of companies: 2004 to 2010

Month	2004	2005	2006	2007	2008	2009	2010
January	175	124	67	95	79	96	93
February	117	111	103	92	102	218	149
March	116	100	104	109	98	144	158
April	113	163	95	124	96	121	163
May	108	92	126	154	91	100	
June	120	125	105	102	94	133	
July	101	115	139	125	166	181	
August	103	103	132	154	92	90	
September	108	126	104	382	174	161	
October	104	93	119	149	131	126	
November	78	77	140	87	101	158	
December	66	100	130	119	227	230	
Year Total	1 309	1 329	1 364	1 692	1 451	1 758	

Table 4 – Number of liquidations of close corporations: 2004 to 2010

Month	2004	2005	2006	2007	2008	2009	2010
January	197	198	86	77	73	156	110
February	166	142	106	96	113	162	167
March	153	117	114	127	189	195	233
April	125	103	98	93	143	201	182
May	134	143	180	116	157	174	
June	165	133	122	77	133	164	
July	159	141	116	143	150	227	
August	146	149	190	144	187	164	
September	296	154	116	91	151	172	
October	127	119	87	111	183	151	
November	128	139	130	100	129	326	
December	182	83	99	79	119	152	
Year Total	1 978	1 621	1 444	1 254	1 727	2 244	

Table 4.1 – Number of compulsory liquidations of close corporations: 2004 to 2010

Month	2004	2005	2006	2007	2008	2009	2010
January	26	24	19	8	21	36	0
February	23	27	11	11	0	15	7
March	25	12	8	7	31	2	4
April	26	5	4	13	14	14	4
May	17	31	15	10	9	17	
June	47	18	15	7	11	6	
July	37	22	10	10	9	17	
August	28	48	35	22	20	39	
September	50	10	4	13	19	1	
October	21	18	7	13	14	7	
November	11	29	13	6	5	9	
December	30	5	16	1	1	1	
Year Total	341	249	157	121	154	164	

Table 4.2 – Number of voluntary liquidations of close corporations: 2004 to 2010

Month	2004	2005	2006	2007	2008	2009	2010
January	171	174	67	69	52	120	110
February	143	115	95	85	113	147	160
March	128	105	106	120	158	193	229
April	99	98	94	80	129	187	178
May	117	112	165	106	148	157	
June	118	115	107	70	122	158	
July	122	119	106	133	141	210	
August	118	101	155	122	167	125	
September	246	144	112	78	132	171	
October	106	101	80	98	169	144	
November	117	110	117	94	124	317	
December	152	78	83	78	118	151	
Year Total	1 637	1 372	1 287	1 133	1 573	2 080	

Table 5 – Total number of insolvencies of individuals and partnerships: 2004 to 2010

Month	2004	2005	2006	2007	* 2008	1/ 2009	1/ 2010
January	145	106	85	* 78	113	172	177
February	143	118	146	173	288	332	299
March	247	148	164	170	280	470	360
April	211	124	102	155	391	490	
May	153	131	146	198	330	520	
June	187	141	144	* 161	414	511	
July	164	122	118	180	452	471	
August	155	174	185	* 209	477	506	
September	182	145	140	203	442	344	
October	127	* 134	169	* 230	557	391	
November	142	166	161	* 297	424	447	
December	119	131	* 111	227	403	390	
Year Total	1 975	1 640	1 671	2 281	4 571	5 044	

1/ Preliminary.

* Revised.

Table 6 – Percentage change between April 2009 and April 2010 regarding the number of liquidations

Number of liquidations April 2009	Number of liquidations April 2010	% change between April 2009 and April 2010	Difference between April 2009 and April 2010
349	358	2,6	9

Table 7 – Percentage change between the first four months of 2009 and the first four months of 2010 regarding the number of liquidations

Number of liquidations January to April 2009	Number of liquidations January to April 2010	% change between January to April 2009 and January to April 2010	Difference between January to April 2009 and January to April 2010
1 357	1 302	-4,1	-55

Table 8 – Percentage change between March 2009 and March 2010 regarding the number of insolvencies

Number of insolvencies March 2009	Number of insolvencies March 2010	% change between March 2009 and March 2010	Difference between March 2009 and March 2010
470	360	-23,4	-110

Table 9 – Percentage change between the first quarter of 2009 and the first quarter of 2010 regarding the number of insolvencies

Number of insolvencies January to March 2009	Number of insolvencies January to March 2010	% change between January to March 2009 and January to March 2010	Difference between January to March 2009 and January to March 2010
974	836	-14,2	-138

Explanatory notes

- Introduction** 1 Statistics South Africa (Stats SA) collects administrative information on liquidations from the Registrar of Companies and Close Corporations, Department of Trade and Industry, while information on insolvencies is gathered from Notices of the Master of the Supreme Court which appears in the Government Gazette.
- 2 This statistical release reflects voluntary and compulsory liquidations of companies and close corporations and insolvencies of individuals and partnerships.
- Purpose of the survey** 3 The aggregated data in this release are used by the private and public sectors to measure economic performance and are also an important indicator of the scope of unpaid debt in South Africa.
- 4 Due to insolvencies figures being available late, the data on insolvencies are published a month later than liquidations.
- Scope of the survey** 5 This survey covers
- the total number of companies and close corporations which were liquidated.
 - the total number of individuals and partnerships placed under final sequestration.
- Related publications** 6 Users may also wish to refer to the following publications which are available from Stats SA :
- Bulletin of Statistics.
 - SA Statistics.
- Symbols and abbreviations** 7 Stats SA - Statistics South Africa

Glossary

- Compulsory liquidation** A compulsory liquidation takes place when the affairs of a company or close corporation are wound up by order of the court.
- Insolvency** Insolvency refers to an individual or partnership which is unable to pay its debt and is placed under final sequestration. The number of insolvencies does not refer to the number of persons involved, as a partnership which is unable to pay its debt is regarded as one insolvency, irrespective of the number of partners.
- Liquidation** Liquidation refers to the winding-up of the affairs of a company or close corporation when liabilities exceed assets and it can be resolved by voluntary action or by an order of the court.
- Voluntary liquidation** A voluntary liquidation takes place when a company or close corporation, by own choice, resolves to wind-up its affairs.

General information

Stats SA publishes approximately 300 different statistical releases each year. It is not economically viable to produce them in more than one of South Africa's eleven official languages. Since the releases are used extensively, not only locally but also by international economic and social-scientific communities, Stats SA releases are published in English only.

Stats SA has copyright on this publication. Users may apply the information as they wish, provided that they acknowledge Stats SA as the source of the basic data wherever they process, apply, utilise, publish or distribute the data; and also that they specify that the relevant application and analysis (where applicable) result from their own processing of the data.

Stats SA products

A complete set of Stats SA publications is available at the Stats SA library and the following libraries:

National Library of South Africa, Pretoria Division
National Library of South Africa, Cape Town Division
Natal Society Library, Pietermaritzburg
Library of Parliament, Cape Town
Bloemfontein Public Library
Johannesburg Public Library
Eastern Cape Library Services, King William's Town
Central Regional Library, Polokwane
Central Reference Library, Nelspruit
Central Reference Collection, Kimberley
Central Reference Library, Mmabatho

Stats SA also provides a subscription service.

Electronic services

Large ranges of data are available via on-line services, CD and computer printouts. For more details about our electronic data services, contact (012) 310 8600/8390/8351/4892/8496/8095.

You can visit us on the internet at: www.statssa.gov.za

Enquiries

Telephone number: (012) 310 8600/ 8390/ 8351/ 4892/ 8496/ 8095 (user information services)
(012) 310 8407 (technical enquiries)
(012) 310 8358 (orders)
(012) 310 4883/4885/8018 (library)

Fax number: (012) 310 8332 (technical enquiries)

email: nthabisengt@statssa.gov.za (technical enquiries)
info@statssa.gov.za (user information services)
magdaj@statssa.gov.za (orders)

Postal address: Private Bag X44, Pretoria, 0001

Produced by Stats SA