

Statistics of liquidations and insolvencies (preliminary) April 2006

**Embargoed until:
1 June 2006
9:30**

Preferred supplier of quality statistics

Table A - Key figures for April 2006 regarding liquidations

Actual estimates	Number of liquidations April 2006	% change between April 2005 and April 2006	% change between November 2005 to January 2006 and February 2006 to April 2006
	198	-29,0	8,5

Key findings for April 2006 regarding liquidations

Total number of liquidations increases

The total number of liquidations recorded for three months ended April 2006 increased by 8,5 % (from 601 to 652) compared with the previous three months. The total number of liquidations recorded for April 2006 reflected a 29,0% decrease (from 279 to 198) compared with April 2005 (see table A).

The increase of 8,5% in the total number of liquidations for the three months ended April 2006 compared with the previous three months was due to an increase of 19,6% (from 499 to 597) in voluntary liquidations.

The decrease of 29,0% in the total number of liquidations for April 2006 compared with April 2005 was due to a decrease of 27,6% (from 261 to 189) in voluntary liquidations (see table 6).

Table B - Key figures regarding insolvencies for March 2006

Actual estimates	Number of insolvencies March 2006	% change between March 2005 and March 2006	% change between October 2005 to December 2005 and January 2006 to March 2006
	86	-38,1	-21,1

Key findings for March 2006 regarding insolvencies

Total number of insolvencies decreases

The total number of insolvencies recorded for the first quarter of 2006 decreased by 21,1 % (from 346 to 273) compared with the last quarter of 2005. The total number of insolvencies recorded for March 2006 decreased by 38,1% (from 139 to 86) compared with March 2005 (see table B).

Figures 1 and 2 below outline the total number of liquidations and insolvencies from 2002 to 2006. Figure 1 shows that the trend estimates for the total number of liquidations has been decreasing from the beginning of 2002 until October of the same year then started an upward trend with a peak in August 2003, but started to decrease thereafter until August 2004 then moved upwards slightly up to April 2005 then there was a continual decline up to April 2006.

Figure 1 – Total number of liquidations

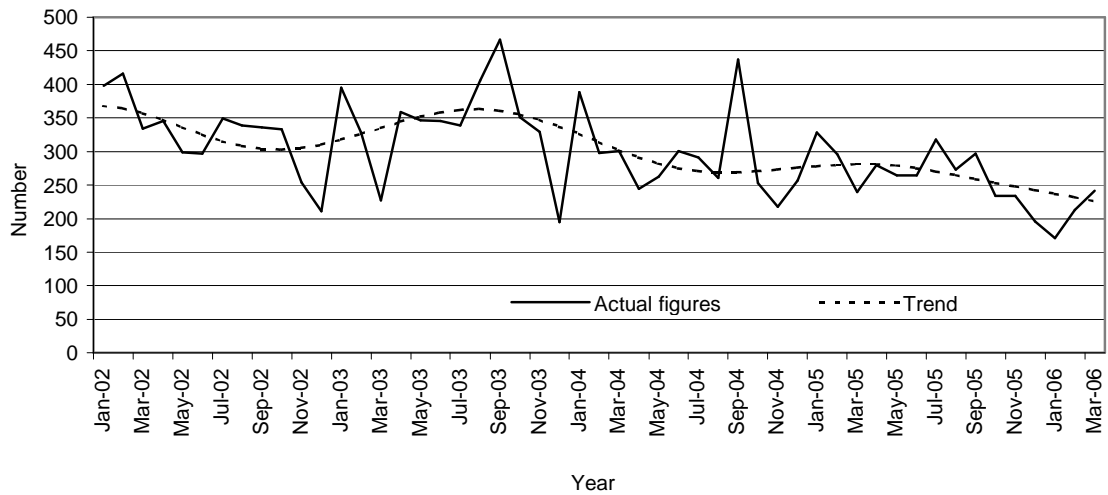
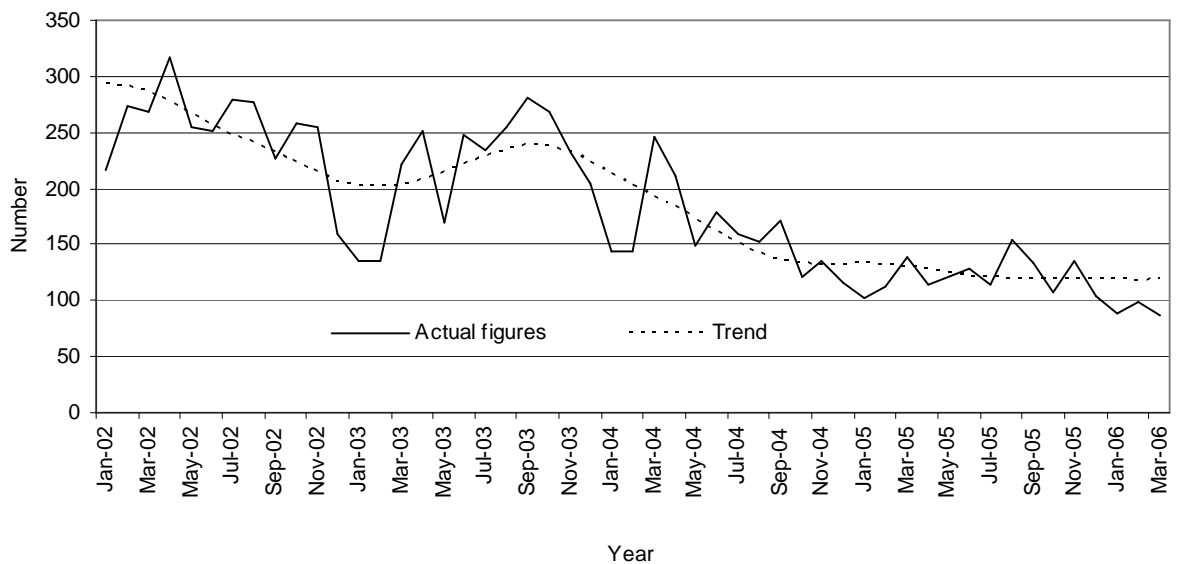


Figure 2 shows that the trend estimates for the total number of insolvencies from the beginning of 2002 shows a decreasing trend until February 2003 then started an upward trend with a peak in October 2003, since then the trend has leveled off.

Figure 2 - Total number of insolvencies



**PJ Lehohla
Statistician-General**

Contents

	Page
Notes	4
Tables	
Table 1 Total number of liquidations according to industry	5
Table 2 Number of liquidations of companies according to industry	5
Table 3 Number of liquidations of close corporations according to industry	5
Table 4 Total number of liquidations: 2000 to 2006	6
Table 5 Total number of compulsory liquidations: 2000 to 2006	6
Table 6 Total number of voluntary liquidations: 2000 to 2006	6
Table 7 Number of liquidations of companies: 2000 to 2006	7
Table 8 Number of compulsory liquidations of companies: 2000 to 2006	7
Table 9 Number of voluntary liquidations of companies: 2000 to 2006	7
Table 10 Number of liquidations of close corporations: 2000 to 2006	8
Table 11 Number of compulsory liquidations of close corporations: 2000 to 2006	8
Table 12 Number of voluntary liquidations of close corporations: 2000 to 2006	8
Table 13 Total number of insolvencies: 2000 to 2006	9
Table 14 Percentage change between April 2006 and the corresponding month of the previous year regarding the number of liquidations	10
Table 15 Percentage change between the three months ended April 2006 and the previous three months regarding the number of liquidations	10
Table 16 Percentage change between March 2006 and the corresponding month of the previous year regarding the number of insolvencies	10
Table 17 Percentage change between the first quarter of 2006 and last quarter of 2005 regarding the number of insolvencies	10
Explanatory notes	11
Glossary	12
General information	13

Notes

Forthcoming issue	Issue	Expected release date
	May 2006	29 June 2006

Data source

Information on liquidations is obtained from the Registrar of Companies and Close Corporations, Department of Trade and Industry, while information on insolvencies is based on Notices of the Master of the Supreme Court, which appear in the Government Gazette. The aggregated data in this release are used by the private and public sectors to measure economic performance and are also an important indicator of the scope of unpaid debt in South Africa. Due to insolvencies figures being available late, the data on insolvencies are published a month later than liquidations.

Table 1- Total number of liquidations according to industry

Industry	Jan – Apr 2006			Apr 2005			Mar 2006			Apr 2006		
	Compul- sory	Volun- tary	Total	Compul- sory	Volun- tary	Total	Compul- sory	Volun- tary	Total	Compul- sory	Volun- tary	Total
Agriculture, hunting, forestry and fishing	2	8	10	0	4	4	1	2	3	0	2	2
Mining and quarrying	0	10	10	0	2	2	0	7	7	0	1	1
Manufacturing	8	47	55	0	9	9	0	11	11	0	17	17
Electricity, gas and water	1	2	3	0	0	0	0	0	0	0	0	0
Construction	10	47	57	3	20	23	3	19	22	2	10	12
Wholesale and retail trade, catering and accommodation	35	221	256	8	60	68	13	58	71	4	61	65
Transport, storage and communication	2	40	42	3	5	8	1	10	11	0	9	9
Financing, insurance, real estate and business services	22	288	310	2	77	79	9	90	99	3	72	75
Community, social and personal services	12	68	80	2	84	86	4	13	17	0	17	17
Total number of liquidations	92	731	823	18	261	279	31	210	241	9	189	198

Table 2 – Number of liquidations of companies according to industry

Industry	Jan – Apr 2006			Apr 2005			Mar 2006			Apr 2006		
	Compul- sory	Volun- tary	Total	Compul- sory	Volun- tary	Total	Compul- sory	Volun- tary	Total	Compul- sory	Volun- tary	Total
Agriculture, hunting, forestry and fishing	0	2	2	0	2	2	0	1	1	0	0	0
Mining and quarrying	0	5	5	0	2	2	0	2	2	0	1	1
Manufacturing	4	27	31	0	7	7	0	7	7	0	13	13
Electricity, gas and water	0	2	2	0	0	0	0	0	0	0	0	0
Construction	1	10	11	2	4	6	1	3	4	0	2	2
Wholesale and retail trade, catering and accommodation	17	102	119	6	26	32	10	28	38	3	28	31
Transport, storage and communication	2	10	12	2	1	3	1	2	3	0	0	0
Financing, insurance, real estate and business services	14	156	170	1	39	40	7	50	57	2	42	44
Community, social and personal services	12	55	67	2	82	84	4	11	15	0	9	9
Total number of liquidations	50	369	419	13	163	176	23	104	127	5	95	100

Table 3 – Number of liquidations of close corporations according to industry

Industry	Jan – Apr 2006			Apr 2005			Mar 2006			Apr 2006		
	Compul- sory	Volun- tary	Total	Compul- sory	Volun- tary	Total	Compul- sory	Volun- tary	Total	Compul- sory	Volun- tary	Total
Agriculture, hunting, forestry and fishing	2	6	8	0	2	2	1	1	2	0	2	2
Mining and quarrying	0	5	5	0	0	0	0	5	5	0	0	0
Manufacturing	4	20	24	0	2	2	0	4	4	0	4	4
Electricity, gas and water	1	0	1	0	0	0	0	0	0	0	0	0
Construction	9	37	46	1	16	17	2	16	18	2	8	10
Wholesale and retail trade, catering and accommodation	18	119	137	2	34	36	3	30	33	1	33	34
Transport, storage and communication	0	30	30	1	4	5	0	8	8	0	9	9
Financing, insurance, real estate and business services	8	132	140	1	38	39	2	40	42	1	30	31
Community, social and personal services	0	13	13	0	2	2	0	2	2	0	8	8
Total number of liquidations	42	362	404	5	98	103	8	106	114	4	94	98

Table 4 - Total number of liquidations: 2000 to 2006

Month	2000	2001	2002	2003	2004	2005	2006
January	193	298	398	395	388	328	171
February	229	382	416	328	298	296	213
March	326	317	334	227	301	240	241
April	273	357	345	359	244	279	198
May	258	331	299	346	262	265	
June	383	294	297	345	301	265	
July	314	307	349	339	291	318	
August	511	504	339	406	260	273	
September	490	337	336	466	437	297	
October	269	410	333	351	253	234	
November	348	346	254	329	218	234	
December	211	273	211	195	257	196	
Year	3 805	4 156	3 911	4 086	3 510	3 225	

Table 5 - Total number of compulsory liquidations: 2000 to 2006

Month	2000	2001	2002	2003	2004	2005	2006
January	85	71	78	76	42	30	37
February	78	114	87	65	38	70	15
March	172	68	68	46	57	35	31
April	125	125	87	63	32	18	9
May	57	81	60	52	37	61	
June	190	88	69	74	63	25	
July	77	81	69	85	68	84	
August	247	256	74	120	39	69	
September	241	118	70	109	83	27	
October	44	137	54	70	43	40	
November	128	74	64	60	23	47	
December	71	71	45	37	39	18	
Year	1 515	1 284	825	857	564	524	

Table 6 - Total number of voluntary liquidations: 2000 to 2006

Month	2000	2001	2002	2003	2004	2005	2006
January	108	227	320	319	346	298	134
February	151	268	329	263	260	226	198
March	154	249	266	181	244	205	210
April	148	232	258	296	212	261	189
May	201	250	239	294	225	204	
June	193	206	228	271	238	240	
July	237	226	280	254	223	234	
August	264	248	265	286	221	204	
September	249	219	266	357	354	270	
October	225	273	279	281	210	194	
November	220	272	190	269	195	187	
December	140	202	166	158	218	178	
Year	2 290	2 872	3 086	3 229	2 946	2 701	

Table 7 – Number of liquidations of companies: 2000 to 2006

Month	2000	2001	2002	2003	2004	2005	2006
January	91	107	130	200	191	130	85
February	151	119	212	188	132	154	107
March	241	132	183	127	148	123	127
April	166	129	161	151	119	176	100
May	130	156	117	162	128	122	
June	173	129	145	178	136	132	
July	89	144	183	141	132	177	
August	152	149	173	202	114	124	
September	93	136	164	260	141	143	
October	106	166	118	235	126	115	
November	112	181	106	136	90	95	
December	122	123	166	130	75	113	
Year	1 626	1 671	1 858	2 110	1 532	1 604	

Table 8 – Number of compulsory liquidations of companies: 2000 to 2006

Month	2000	2001	2002	2003	2004	2005	2006
January	32	34	19	37	16	6	18
February	57	17	46	28	15	43	4
March	147	28	32	17	32	23	23
April	87	27	53	17	6	13	5
May	40	41	12	28	20	30	
June	100	53	29	31	16	7	
July	32	41	33	29	31	62	
August	48	38	17	69	11	21	
September	31	54	22	60	33	17	
October	21	51	22	42	22	22	
November	25	35	25	38	12	18	
December	39	24	29	27	9	13	
Year	659	443	339	423	223	275	

Table 9 - Number of voluntary liquidations of companies: 2000 to 2006

Month	2000	2001	2002	2003	2004	2005	2006
January	59	73	111	163	175	124	67
February	94	102	166	160	117	111	103
March	94	104	151	110	116	100	104
April	79	102	108	134	113	163	95
May	90	115	105	134	108	92	
June	73	76	116	147	120	125	
July	57	103	150	112	101	115	
August	104	111	156	133	103	103	
September	62	82	142	200	108	126	
October	85	115	96	193	104	93	
November	87	146	81	98	78	77	
December	83	99	137	103	66	100	
Year	967	1 228	1 519	1 687	1 309	1 329	

Table 10 - Number of liquidations of close corporations: 2000 to 2006

Month	2000	2001	2002	2003	2004	2005	2006
January	102	191	268	195	197	198	86
February	78	263	204	140	166	142	106
March	85	185	151	100	153	117	114
April	107	228	184	208	125	103	98
May	128	175	182	184	134	143	
June	210	165	152	167	165	133	
July	225	163	166	198	159	141	
August	359	355	166	204	146	149	
September	397	201	172	206	296	154	
October	163	244	215	116	127	119	
November	236	165	148	193	128	139	
December	89	150	45	65	182	83	
Year	2 179	2 485	2 053	1 976	1 978	1 621	

Table 11 - Number of compulsory liquidations of close corporations: 2000 to 2006

Month	2000	2001	2002	2003	2004	2005	2006
January	53	37	59	39	26	24	19
February	21	97	41	37	23	27	11
March	25	40	36	29	25	12	8
April	38	98	34	46	26	5	4
May	17	40	48	24	17	31	
June	90	35	40	43	47	18	
July	45	40	36	56	37	22	
August	199	218	57	51	28	48	
September	210	64	48	49	50	10	
October	23	86	32	28	21	18	
November	103	39	39	22	11	29	
December	32	47	16	10	30	5	
Year	856	841	486	434	341	249	

Table 12 – Number of voluntary liquidations of close corporations: 2000 to 2006

Month	2000	2001	2002	2003	2004	2005	2006
January	49	154	209	156	171	174	67
February	57	166	163	103	143	115	95
March	60	145	115	71	128	105	106
April	69	130	150	162	99	98	94
May	111	135	134	160	117	112	
June	120	130	112	124	118	115	
July	180	123	130	142	122	119	
August	160	137	109	153	118	101	
September	187	137	124	157	246	144	
October	140	158	183	88	106	101	
November	133	126	109	171	117	110	
December	57	103	29	55	152	78	
Year	1 323	1 644	1 567	1 542	1 637	1 372	

Table 13 - Total number of insolvencies: 2000 to 2006

Month	2000	2001	2002	2003	2004*	2005*	2006 1/
January	285	253	216	135	143	103	89
February	445	308	273	135	143	113	98
March	397	356	269	221	246	139	86
April	403	319	317	251	211	115	
May	413	394	255	169	149	122	
June	412	325	251	248	178	129	
July	384	403	279	234	160	114	
August	499	374	277	254	152	155	
September	317	308	227	280	172	134	
October	388	334	259	268	122	107	
November	420	323	254	232	135	135	
December	326	238	160	204	116	104	
Year	4 689	3 935	3 037	2 631	1 927	1 470	

1/ Preliminary.

*Revised.

Table 14 – Percentage change between April 2006 and the corresponding month of the previous year regarding the number of liquidations

Actual estimates	Number of liquidations April 2005	Number of liquidations April 2006	% change between April 2005 and April 2006	Difference between April 2005 and April 2006
	279	198	-29,0	-81

Table 15 – Percentage change between the three months ended April 2006 and the previous three months regarding the number of liquidations

Actual estimates	Number of liquidations November 2005 to January 2006	Number of liquidations February 2006 to April 2006	% change between November 2005 to January 2006 and February 2006 to April 2006	Difference between November 2005 to January 2006 and February 2006 to April 2006
	601	652	8,5	51

Table 16 – Percentage change between March 2006 and the corresponding month of the previous year regarding the number of insolvencies

Actual estimates	Number of insolvencies March 2005	Number of insolvencies March 2006	% change between March 2005 and March 2006	Difference between March 2005 and March 2006
	139	86	-38,1	-53

Table 17 - Percentage change between the first quarter of 2006 and the last quarter of 2005 regarding the number of insolvencies

Actual estimates	Number of insolvencies October 2005 to December 2005	Number of insolvencies January 2006 to March 2006	% change between October 2005 to December 2005 and January 2006 to March 2006	Difference between October 2005 to December 2005 and January 2006 to March 2006
	346	273	-21,1	-73

Explanatory notes

- Introduction**
- 1** Statistics South Africa (Stats SA) collects administrative information on liquidations from the Registrar of Companies and Close Corporations, Department of Trade and Industry, while information on insolvencies is gathered from Notices of the Master of the Supreme Court which appears in the Government Gazette.
- 2** This statistical release reflects voluntary and compulsory liquidations of companies and close corporations and insolvencies of individuals and partnerships.
- Scope of the survey**
- 3** This survey covers -
- the total number of companies and close corporations which were liquidated; and
 - the total number of individuals and partnerships placed under final sequestration.
- Related publications**
- 4** Users may also wish to refer to the following publications which are available from Stats SA -
- *Bulletin of Statistics.*
 - *SA Statistics.*
- Unpublished statistics**
- 5** In some cases Stats SA can also make available statistics not included in standard publications. The statistics can be made available in one or more of the following ways: computer printout, CD or diskette. Generally a charge is made for providing unpublished statistics.
- Symbols and abbreviations**
- 6**
- | | |
|----------|-------------------------|
| CD | Compact Disc |
| Stats SA | Statistics South Africa |

Glossary

Compulsory liquidation	A compulsory liquidation takes place when the affairs of a company or close corporation are wound up by order of the court.
Insolvency	An insolvency refers to an individual or partnership which is unable to pay its debt and is placed under final sequestration. The number of insolvencies does not refer to the number of persons involved, as a partnership which is unable to pay its debt is regarded as one insolvency, irrespective of the number of partners.
Liquidation	A liquidation refers to the winding-up of the affairs of a company or close corporation when liabilities exceed assets and it can be resolved by voluntary action or by an order of the court.
Voluntary liquidation	A voluntary liquidation takes place when a company or close corporation, by own choice, resolves to wind-up its affairs.

General information

Stats SA publishes approximately 300 different statistical releases each year. It is not economically viable to produce them in more than one of South Africa's eleven official languages. Since the releases are used extensively, not only locally but also by international economic and social-scientific communities, Stats SA releases are published in English only.

Stats SA has copyright on this publication. Users may apply the information as they wish, provided that they acknowledge Stats SA as the source of the basic data wherever they process, apply, utilise, publish or distribute the data; and also that they specify that the relevant application and analysis (where applicable) result from their own processing of the data.

Stats SA products

A complete set of Stats SA publications is available at the Stats SA Library and the following libraries:

National Library of South Africa, Pretoria Division
National Library of South Africa, Cape Town Division
Natal Society Library, Pietermaritzburg
Library of Parliament, Cape Town
Bloemfontein Public Library
Johannesburg Public Library
Eastern Cape Library Services, King William's Town
Central Regional Library, Polokwane
Central Reference Library, Nelspruit
Central Reference Collection, Kimberley
Central Reference Library, Mmabatho

Stats SA also provides a subscription service.

Electronic services

A large range of data are available via on-line services, diskette, CD and computer printouts. For more details about our electronic data services, contact (012) 310 8600/8390/8351/4892/8964/8095.

You can visit us on the internet at: www.statssa.gov.za

Enquiries

Telephone number: (012) 310 8600/ 8390/ 8351/ 4892/ 8964/ 8095 (user information services)
(012) 310 8220 (technical enquiries)
(012) 310 8161 (orders)
(012) 310 4883/4885/8018 (library)

Fax number: (012) 310 8332 (technical enquiries)

email: Juan-Pierret@statssa.gov.za (technical enquiries)
info@statssa.gov.za (user information services)
distribution@statssa.gov.za (orders)

Postal address: Private Bag X44, Pretoria, 0001

Produced by Stats SA

