

STATISTICAL RELEASE
P0041

Statistics of civil cases for debt
(Preliminary)

October 2017

Embargoed until:
14 December 2017
09:00

ENQUIRIES:
Juan-Pierre Terblanche
Tel: (012) 310 2965

FORTHCOMING ISSUE:
November 2017

EXPECTED RELEASE DATE:
18 January 2018

www.statssa.gov.za
info@statssa.gov.za
T +27 12 310 8911
F +27 12 310 8500

Private Bag X44, Pretoria, 0001, South Africa
ISibalo House, Koch Street, Salvokop, Pretoria, 0002

Contents

Key results for October 2017	2
Detailed results: Tables	4
Table 1 – Number of civil cases recorded and summonses issued for debt: Total and private persons	4
Table 2 – Number of civil default and consent judgements for debt: Total and private persons	5
Table 3 – Value of civil default and consent judgements for debt: Total and private persons (R'000)	5
Table 4 – Percentage change in the total number of civil summonses and judgements and the value of judgements recorded between the three months ended October 2016 and the three months ended October 2017	6
Table 5 – Contribution of the different kinds of debt to the change in total number of civil summonses and judgements and the value of judgements recorded between the three months ended October 2016 and the three months ended October 2017	6
Table 6 – Percentage change in the total number of civil summonses and judgements and the value of judgements recorded between the current month and the corresponding month of the previous year	6
Table 7 – Number of civil summonses issued for debt by province	7
Table 8 – Number of civil default and consent judgements for debt by province	7
Table 9 – Value of civil default and consent judgements for debt by province (R'000).....	7
Explanatory notes	8
Glossary	9
General information	10
Technical enquires	10

Key results for October 2017

Table A – Key figures for the month of October 2017

Actual estimates	October 2017	% change between October 2016 and October 2017	% change between August – October 2016 and August – October 2017
Number of civil summonses issued for debt	56 059	-5,8	-12,4
Number of civil judgements recorded for debt	19 356	-12,3	-14,0
Value of civil judgements recorded for debt (R million)	345,3	1,5	-0,3

The number of civil summonses issued for debt

The total number of civil summonses issued for debt decreased by 12,4% in the three months ended October 2017 compared with the three months ended October 2016.

The largest contributors to the 12,4% decrease were civil summonses relating to:

- money lent (contributing -6,8 percentage points);
- services (contributing -2,5 percentage points);
- promissory notes (contributing -1,7 percentage points); and
- 'other' debts (contributing -1,6 percentage points) – see Tables 4 and 5.

The number of civil judgements recorded for debt

The total number of civil judgements recorded for debt decreased by 14,0% in the three months ended October 2017 compared with the three months ended October 2016.

The largest negative contributors to the 14,0% decrease were civil judgements relating to:

- money lent (contributing -6,6 percentage points);
- services (contributing -5,8 percentage points); and
- 'other' debts (contributing -2,7 percentage points) – see Tables 4 and 5.

The value of civil judgements recorded for debt

The total value of civil judgements recorded for debt decreased by 0,3% in the three months ended October 2017 compared with the three months ended October 2016.

The largest negative contributor to the 0,3% decrease was the value of judgements relating to 'other' debts (contributing -5,1 percentage points) – see Tables 4 and 5.

The total number of civil judgements for debt granted in October 2017 was 19 356 amounting to R345,3 million. The largest contributors to the total value of judgements were:

- money lent (R90,9 million or 26,3%);
- services (R79,6 million or 23,0%); and
- 'other' debts (R68,5 million or 19,8%) – see Tables 2 and 3.

Figure 1 – Civil summonses issued for debt

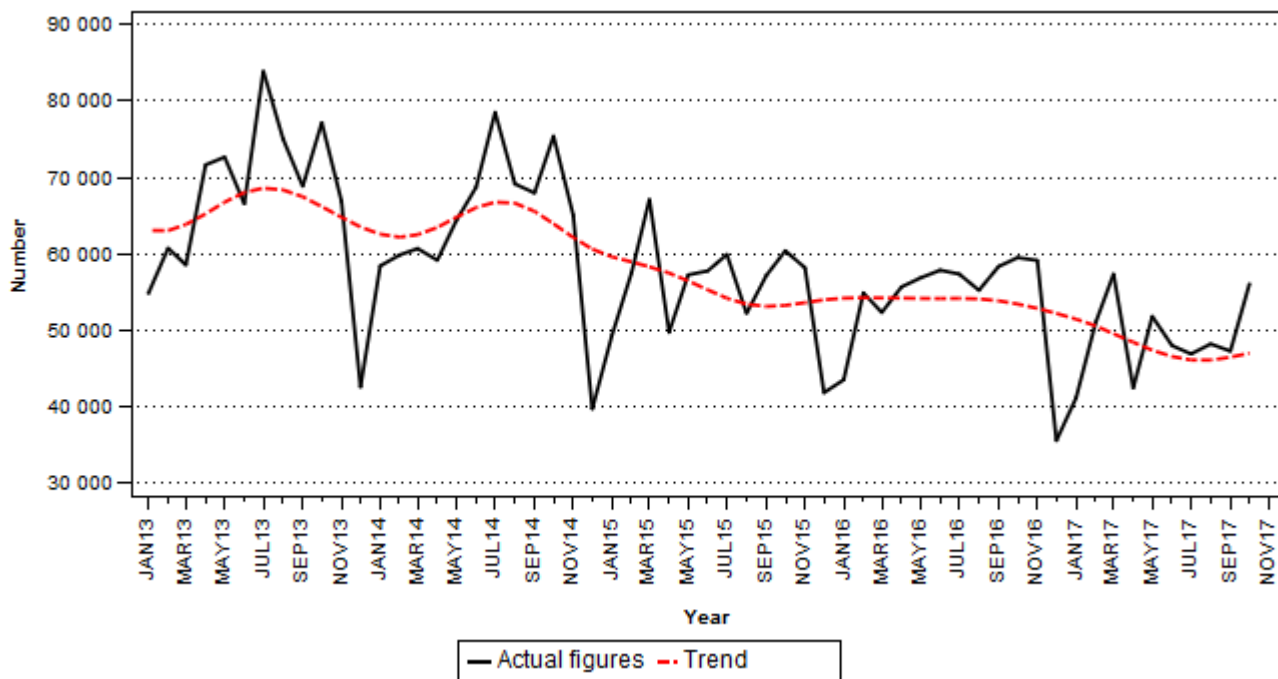
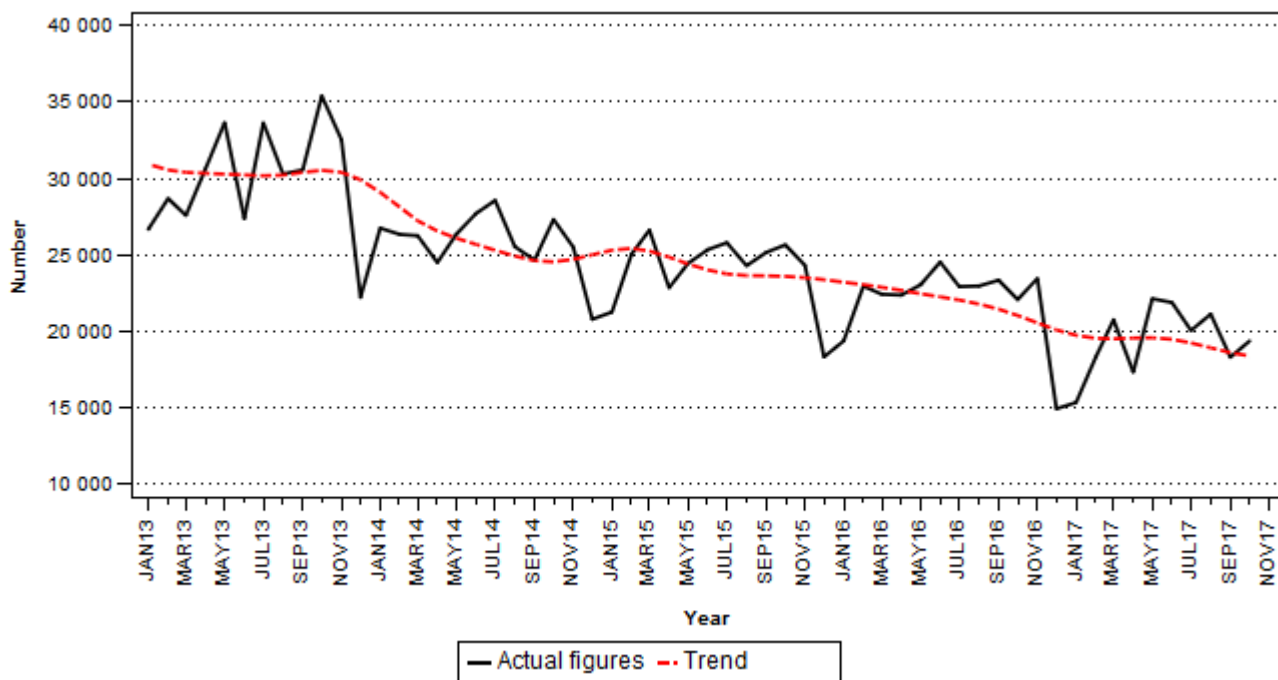


Figure 2 – Civil judgements recorded for debt



Risenga Maluleke
 Statistician-General

Detailed results: Tables**Table 1 – Number of civil cases recorded and summonses issued for debt: Total and private persons**

Item		Total				Private Persons			
		2016	Oct-16	1/ Sep-17	1/ Oct-17	2016	Oct-16	1/ Sep-17	1/ Oct-17
Cases recorded	Actual figures	700 485	64 457	53 597	62 348	602 530	55 387	43 734	54 708
	Seasonally adjusted		57 492	52 551	54 335		51 015	43 499	49 086
Civil summonses for debt	Goods sold - Open account	39 656	3 485	2 846	3 201	29 919	2 571	2 044	2 297
	Goods sold - Instalment sale transactions	21 886	1 901	1 974	1 979	16 506	1 471	1 548	1 576
	Services - Professional	83 019	6 901	5 535	6 228	72 241	5 941	4 822	5 383
	Services - Other	106 305	9 361	7 852	9 892	89 744	8 151	6 671	8 554
	Rent	31 195	2 794	2 755	3 176	24 197	2 113	2 029	2 509
	Money lent	155 809	15 808	10 465	12 232	145 604	14 910	9 839	11 566
	Promissory notes, bills, R/D cheques, credit cards and other acknowledgements of debt	90 564	8 290	6 325	7 828	84 008	7 696	5 710	7 231
	Other debts	117 781	10 958	9 526	11 523	103 779	9 561	8 419	10 159
	Total - Actual figures	646 215	59 498	47 278	56 059	565 998	52 414	41 082	49 275
Total - Seasonally adjusted		53 800	46 517	48 778		47 663	40 594	42 784	

1/ Preliminary.

Table 2 – Number of civil default and consent judgements for debt: Total and private persons

Item		Total				Private Persons			
		2016	Oct-16	1/ Sep-17	1/ Oct-17	2016	Oct-16	1/ Sep-17	1/ Oct-17
Number of civil judgements	Goods sold - Open account	17 058	1 361	1 329	1 281	12 948	1 029	1 068	920
	Goods sold - Instalment sale transactions	7 068	621	607	496	6 039	538	505	423
	Services - Professional	44 011	3 582	2 653	2 880	39 091	3 128	2 471	2 631
	Services - Other	41 276	3 007	2 765	3 420	35 567	2 552	2 443	3 041
	Rent	18 296	1 513	1 601	1 791	15 162	1 257	1 341	1 495
	Money lent	60 447	5 673	3 761	3 806	55 379	5 315	3 376	3 474
	Promissory notes, bills, R/D cheques, credit cards and other acknowledgements of debt	25 021	2 173	2 112	2 119	21 461	1 853	1 728	1 780
	Other debts	51 152	4 142	3 478	3 563	45 458	3 692	3 249	3 182
	Total - Actual figures	264 329	22 072	18 306	19 356	231 105	19 364	16 181	16 946
	Total - Seasonally adjusted		20 916	18 142	17 939		18 410	16 120	15 707

1/ Preliminary.

Table 3 – Value of civil default and consent judgements for debt: Total and private persons (R'000)

Item		Total				Private Persons			
		2016	Oct-16	1/ Sep-17	1/ Oct-17	2016	Oct-16	1/ Sep-17	1/ Oct-17
Value of civil judgements	Goods sold - Open account	253 299	19 461	19 543	24 040	131 337	9 771	10 108	11 014
	Goods sold - Instalment sale transactions	96 673	8 905	13 551	7 724	83 906	7 806	10 899	6 590
	Services - Professional	243 371	20 325	16 537	29 551	208 795	17 308	15 179	26 461
	Services - Other	542 398	37 627	35 850	50 030	432 972	29 584	30 021	41 937
	Rent	322 885	26 744	27 981	32 764	224 770	15 825	18 372	24 233
	Money lent	1 139 611	101 154	97 028	90 881	1 029 219	91 958	85 015	83 904
	Promissory notes, bills, R/D cheques, credit cards and other acknowledgements of debt	434 549	37 876	49 010	41 792	363 747	31 690	43 859	35 125
	Other debts	989 698	88 106	61 282	68 532	722 123	66 779	52 623	50 083
	Total - Actual figures	4 022 484	340 198	320 782	345 314	3 196 869	270 721	266 076	279 347
	Total - Seasonally adjusted		320 571	323 214	324 610		257 582	264 847	260 710

1/ Preliminary.

Table 4 – Percentage change in the total number of civil summonses and judgements and the value of judgements recorded between the three months ended October 2016 and the three months ended October 2017

Actual estimates	Actual estimates Aug – Oct 2016	Actual estimates Aug – Oct 2017	% change between Aug – Oct 2016 and Aug – Oct 2017	Difference between Aug – Oct 2016 and Aug – Oct 2017
Number of civil summonses issued for debt	173 063	151 545	-12,4	-21 518
Number of civil judgements recorded for debt	68 368	58 781	-14,0	-9 587
Value of civil judgements recorded for debt (R million)	1 049,5	1 046,1	-0,3	-3,4

Table 5 – Contribution of the different kinds of debt to the change in total number of civil summonses and judgements and the value of judgements recorded between the three months ended October 2016 and the three months ended October 2017 1/

Item	Contribution (% points) to the % change in the total		
	Civil summonses for debt	Number of civil judgements	Value of civil judgements
Goods sold - Open account	-0,7	-0,5	0,7
Goods sold - Instalment sale transactions	0,2	0,4	1,4
Services - Professional	-2,2	-4,2	0,6
Services - Other	-0,3	-1,6	-0,6
Rent	0,6	0,9	1,0
Money lent	-6,8	-6,6	-1,2
Promissory notes, bills, R/D cheques, credit cards and other acknowledgements of debt	-1,7	0,2	2,8
Other debts	-1,6	-2,7	-5,1
Total	-12,4	-14,0	-0,3

1/ The contribution (percentage points) is calculated by multiplying the three-monthly percentage change of each kind of debt by the percentage contribution to the total during August to October 2016, divided by 100. Due to rounding off, contributions might not add up to the total.

Table 6 – Percentage change in the total number of civil summonses and judgements and the value of judgements recorded between the current month and the corresponding month of the previous year

Actual estimates	Actual estimates October 2016	Actual estimates October 2017	% change between October 2016 and October 2017	Difference between October 2016 and October 2017
Number of civil summonses issued for debt	59 498	56 059	-5,8	-3 439
Number of civil judgements recorded for debt	22 072	19 356	-12,3	-2 716
Value of civil judgements recorded for debt (R million)	340,2	345,3	1,5	5,1

Table 7 – Number of civil summonses issued for debt by province

Period 1/		Western Cape	Eastern Cape	Northern Cape	Free State	KwaZulu-Natal	North West	Gauteng	Mpumalanga	Limpopo	South Africa
2016	Oct	9 612	4 831	800	4 239	9 961	3 280	21 508	2 868	2 399	59 498
	Nov	10 398	4 717	899	4 411	10 014	3 276	19 791	3 151	2 467	59 124
	Dec	5 768	2 145	509	2 851	5 978	1 243	13 343	2 009	1 733	35 579
2017	Jan	6 630	3 224	554	3 356	5 507	2 178	16 203	1 541	1 969	41 162
	Feb	8 707	3 749	811	3 309	8 903	2 185	18 837	2 409	2 136	51 046
	Mar	10 515	4 635	1 040	3 941	8 972	2 538	20 565	2 661	2 479	57 346
	Apr	6 795	3 197	618	2 807	7 746	1 954	15 012	1 999	2 330	42 458
	May	9 102	4 100	808	3 355	9 295	2 358	18 167	2 530	2 096	51 811
	Jun	7 263	3 923	568	3 529	8 739	2 083	17 602	2 270	2 025	48 002
	Jul	7 914	3 368	876	2 755	8 662	2 079	16 897	2 249	2 102	46 902
	Aug	8 188	3 820	913	3 724	9 297	2 282	15 858	2 269	1 857	48 208
	Sep	7 081	3 527	531	3 500	9 689	2 258	16 361	2 356	1 975	47 278
	Oct	10 612	4 025	941	4 133	10 752	2 368	18 640	2 427	2 161	56 059

1/ Latest two months are preliminary.

Table 8 – Number of civil default and consent judgements for debt by province

Period 1/		Western Cape	Eastern Cape	Northern Cape	Free State	KwaZulu-Natal	North West	Gauteng	Mpumalanga	Limpopo	South Africa
2016	Oct	4 082	2 617	445	2 208	4 171	1 297	4 461	1 254	1 537	22 072
	Nov	4 165	2 613	254	2 676	4 208	1 493	5 309	1 148	1 584	23 450
	Dec	2 147	1 240	410	1 319	2 698	715	4 416	943	1 046	14 934
2017	Jan	2 541	2 201	226	1 657	2 034	659	3 922	1 048	1 054	15 342
	Feb	3 370	2 019	292	1 788	3 843	925	4 211	765	1 099	18 312
	Mar	4 019	2 876	539	2 175	3 577	1 001	3 999	1 265	1 300	20 751
	Apr	2 475	2 309	351	2 185	3 386	781	3 664	863	1 318	17 332
	May	4 442	2 732	480	2 594	3 954	1 006	4 610	1 048	1 262	22 128
	Jun	3 368	3 627	389	2 370	3 964	1 100	4 256	1 159	1 646	21 879
	Jul	3 314	2 584	381	2 424	3 951	909	4 306	930	1 252	20 051
	Aug	3 418	2 614	412	2 409	4 586	985	4 460	1 025	1 210	21 119
	Sep	2 524	2 093	359	1 915	4 337	914	4 010	1 052	1 102	18 306
	Oct	2 698	2 567	464	2 016	4 308	674	4 443	1 053	1 133	19 356

1/ Latest two months are preliminary.

Table 9 – Value of civil default and consent judgements for debt by province (R'000)

Period 1/		Western Cape	Eastern Cape	Northern Cape	Free State	KwaZulu-Natal	North West	Gauteng	Mpumalanga	Limpopo	South Africa
2016	Oct	73 547	54 538	3 721	27 805	47 126	11 085	86 080	23 224	13 072	340 198
	Nov	83 923	48 625	2 543	42 330	42 096	14 584	97 217	23 216	15 991	370 525
	Dec	42 778	34 684	3 662	18 302	38 753	10 860	73 189	24 034	5 811	252 073
2017	Jan	42 093	44 928	3 266	21 097	27 757	9 980	58 734	24 055	8 894	240 804
	Feb	67 812	35 384	3 094	19 788	39 303	14 398	81 496	15 697	6 533	283 505
	Mar	71 623	55 846	6 302	26 937	46 972	12 822	95 561	26 632	13 150	355 845
	Apr	50 854	43 565	3 289	25 210	40 619	11 248	68 299	18 608	12 992	274 684
	May	93 019	57 820	5 662	36 927	53 567	15 437	109 482	20 889	10 124	402 927
	Jun	66 175	42 752	5 050	35 011	42 347	16 976	100 206	27 212	14 320	350 049
	Jul	75 513	42 107	3 528	28 203	48 404	15 257	117 998	21 315	11 234	363 559
	Aug	72 344	56 148	3 477	33 413	64 052	13 728	109 487	18 897	8 456	380 002
	Sep	62 053	43 197	3 507	21 904	43 157	14 234	106 964	20 044	5 722	320 782
	Oct	59 381	52 158	4 550	25 920	58 123	10 015	108 307	20 078	6 782	345 314

1/ Latest two months are preliminary.

Explanatory notes

Introduction	1	<p>Statistics South Africa (Stats SA) conducts a monthly sample survey of civil cases recorded and civil summonses for debt issued in South Africa. This information is obtained from selected magistrates' offices.</p> <p>2 Except for cases recorded, all other information relates to debt cases only, therefore claims for damages, ejectment orders and other non-debt cases are excluded.</p>
Purpose of the survey	3	<p>The survey of civil cases for debt covers a sample of magistrates' offices in South Africa. This survey collects information regarding civil cases recorded, civil summonses issued and civil judgements recorded in order to provide users with information on the extent of unpaid debt in South Africa. The results of the survey are used by the private and public sectors as an indicator of economic performance.</p>
Scope of the survey	4	<p>This survey covers:</p> <ul style="list-style-type: none"> • number of civil cases recorded; • number of civil summonses issued for debt; • number of civil judgements recorded for debt; and • value of civil judgements recorded for debt.
Statistical unit	5	<p>The statistical unit for collection of information is a magistrate's office. Magistrates' offices include the small claims courts.</p> <p>The largest magistrates' offices in South Africa are included in the monthly survey of civil cases for debt. The monthly survey of 203 magistrates' courts represents approximately 98% of all cases in South Africa.</p>
Survey methodology and design	6	<p>The survey is conducted by email, fax and telephone each month from 203 magistrates' offices.</p>
Collection rate	7	<p>The preliminary collection rate for the civil cases for debt survey for October 2017 was 89,2%. The collection rate for September 2017 was 87,7%.</p>
Seasonal adjustment	8	<p>Seasonally adjusted estimates of all categories are generated each month, using the X-12 Seasonal Adjustment Program developed by the US Bureau of the Census, 1968. Seasonal adjustment is a means of removing the estimated effects of normal seasonal variation from the series so that the effects of other influences on the series can be more clearly recognised. Seasonal adjustment does not aim to remove irregular or non-seasonal influences, which may be present in any particular month. Influences that are volatile or unsystematic can still make it difficult to interpret the movement of the series even after adjustment for seasonal variations. Therefore the month-to-month movements of seasonally adjusted estimates may not be reliable indicators of trend behaviour. The X-12-ARIMA procedure for civil cases for debt is described in more detail on the Stats SA website: Click to download seasonal adjustment for civil cases for debt.</p>
Trend cycle	9	<p>The trend is the long-term pattern or movement of a time series. The X-12-ARIMA Seasonal Adjustment Program is used for smoothing seasonally adjusted estimates to estimate the underlying trend cycle.</p>
Unpublished statistics	10	<p>In some cases Stats SA can also make available statistics which are not published.</p>
Symbols and abbreviations	11	<p>R/D Refer to drawer Stats SA Statistics South Africa * Revised figures</p>

Glossary

Acknowledgement of debt	Acknowledgement of debt is a statement by a person/debtor in which he admits that he owes money to an individual or a company or a bank.
Bills	Bills are statements of charges for services rendered or for amounts owed.
Cases recorded	Includes civil debt and non-debt cases recorded.
Civil judgements	Civil judgements are decisions taken in a civil matter or a dispute between two people or parties.
Civil summonses	Civil summonses are notices to appear before the court of law where a dispute between two parties or people has to be heard, i.e. not for a criminal offence.
Consent judgements	Consent judgements refer to where a debtor agrees to subject himself/herself to obey or accept a judgement of a court against him for debt he owes without defending the action.
Default judgements	Default judgements refer to where the court gives a judgement or a ruling against the defendant who is not present in court and was previously given a notice that was ignored, i.e. a judgement was given against a party or an individual while not present in court.
Instalment sale transaction	Instalment sale transaction relates to where a person buys goods on credit and pays for them in instalments, e.g. every week or month, until he/she settles the debt.
Litigants	Litigants are people who take part in court proceedings, usually against each other, like a debtor and a creditor.
Litigants referred	Litigants referred relates to a case where the parties have been referred to another instance/court.
Open account transaction	Open account transactions are revolving credit, i.e. where an account does not have a final payment date and a person can always take more goods and keep paying as long as he has credit.
Other services	'Other services' refers to municipal services (except outstanding assessment rates), plumbers, builders, mechanics, panel beaters and electricians.
Other debts	'Other debts' refers to all other kinds of outstanding debt such as salaries and wages, medical fund debt, sponsored debt, class and tuition debt, tax, assessment rates and property levies.
Plaintiff	Plaintiff is a person/party in a civil case who asks the court for judgement against another person.
Professional services	Professional services refer to medical doctors, dentists, advocates, attorneys, auditors, accountants, architects, engineers, hospital services, etc.
Promissory note	Promissory note is a written undertaking, signed by a person or party, to pay money to another person or to the bearer of such a note on a specific date or on demand.
Reference month	Reference month refers to one calendar month.
Refer to drawer (R/D) cheques	R/D cheques refer to dishonoured cheques. The drawer is the owner of the cheque. When a person issues a cheque and there is no money in the cheque account, the bank will refuse to pay the bearer. The cheque will be referred back to the drawer.

General information

Stats SA publishes approximately 300 different statistical releases each year. It is not economically viable to produce them in more than one of South Africa's eleven official languages. Since the releases are used extensively, not only locally but also by international economic and social-scientific communities, Stats SA releases are published in English only.

Stats SA has copyright on this publication. Users may apply the information as they wish, provided that they acknowledge Stats SA as the source of the basic data wherever they process, apply, utilize, publish or distribute the data; and also that they specify that the relevant application and analysis (where applicable) result from their own processing of the data.

Advance release calendar

An advance release calendar is disseminated on www.statssa.gov.za

Stats SA products

A complete set of Stats SA publications is available at the Stats SA Library and the following libraries:

National Library of South Africa, Pretoria Division
National Library of South Africa, Cape Town Division
Natal Society Library, Pietermaritzburg
Library of Parliament, Cape Town
Bloemfontein Public Library
Johannesburg Public Library
Eastern Cape Library Services, King William's Town
Central Regional Library, Polokwane
Central Reference Library, Mbombela
Central Reference Collection, Kimberley
Central Reference Library, Mmabatho

Stats SA also provides a subscription service.

Electronic services

A large range of data is available via online services. For more detail about our electronic services, contact Stats SA's user information service at (012) 310 8600.

You can visit us on the Internet at: www.statssa.gov.za

Technical enquires

JP Terblanche Telephone number: (012) 310 2965
Email address: juan-pierret@statssa.gov.za

Onica Mapimele Telephone number: (012) 310 4897
Email address: onicama@statssa.gov.za

General enquiries

User information services Telephone number: (012) 310 8600
Email address: info@statssa.gov.za

Postal address Private Bag X44, Pretoria, 0001

Produced by Stats SA