



your leading partner in quality statistics

Statistical release

P0142.1

Producer Price Index (PPI)

Tables for 2013

Example

Embargoed until:

Enquiries:

Marais Kleu
012-3108170

Forthcoming issue:

Expected release date

Contents

	Page
Key findings as at ...(period)	3
Key figures as at ...(period)	4
Index numbers and year-on-year rates of change	5
Detailed results	
Tables	
Table 1 PPI for final manufactured goods	7
Table 2 PPI for intermediate manufactured goods	10
Table 3 PPI for electricity and water	11
Table 4 PPI for mining	12
Table 5 PPI for agriculture, forestry and fishing	13
Figures	
Figure 1 Manufacturing year-on-year percentage change	6
Figure 2 Manufacturing month-on-month percentage change	6
Figure 3 Contributions to the annual percentage change in PPI for final manufactured goods	9
Figure 4 Contributions to the monthly percentage change in PPI for final manufactured goods	9
Figure 5 Contributions to the annual percentage change in PPI for intermediate manufactured goods	10
Figure 6 Contributions to the monthly percentage change in PPI for intermediate manufactured goods	10
Figure 7 Contributions to the annual percentage change in PPI for electricity and water	11
Figure 8 Contributions to the monthly percentage change in PPI for electricity and water	11
Figure 9 Contributions to the annual percentage change in PPI for mining	12
Figure 10 Contributions to the monthly percentage change in PPI for mining	12

Figure 11	Contributions to the annual percentage change in PPI for agriculture, forestry and fishing	13
Figure 12	Contributions to the monthly percentage change in PPI for agriculture, forestry and fishing	13
Explanatory notes		14
Methodological notes		16
Glossary		18
General information		19

Key findings

Key findings as at ... (period)

Key findings will have a paragraph on each table in the following format:

- **Final manufactured goods**
- **Intermediate manufactured goods**
- **Water and electricity**
- **Mining**
- **Agriculture, forestry and fishing**

Key figures and analytical series

Table A

Key figures						
		Index			Percentage change	
	Weight	Aug-11	July-12	Aug-12	M-o-M	Y-o-Y
Final manufactured goods	100.00					
Intermediate manufactured goods	100.00					
Electricity and water	100.00					
Mining	100.00					
Agriculture, forestry and fishing	100.00					
Analytical series						
		Index			Percentage change	
	Weight	Aug-11	July-12	Aug-12	M-o-M	Y-o-Y
Final manufactured goods excluding coal, petroleum and chemical products	90.89					
Final manufactured goods excluding food	77.35					
Intermediate manufactured goods excluding basic metals	79.85					
Mining excluding precious metals and stones	52.90					
Precious metals and stones	47.10					

Index numbers and year-on-year rates of change

a) Final manufactured goods

Year		Jan	Feb	Mar	Apr	May	Jun	Jul	Aug	Sep	Oct	Nov	Dec	Ave
2011	Index													
	%													
2012	Index													
	%									

b) Intermediate manufactured goods

Year		Jan	Feb	Mar	Apr	May	Jun	Jul	Aug	Sep	Oct	Nov	Dec	Ave
2011	Index													
	%													
2012	Index													
	%													

c) Electricity and water

Year		Jan	Feb	Mar	Apr	May	Jun	Jul	Aug	Sep	Oct	Nov	Dec	Ave
2011	Index													
	%													
2012	Index													
	%													

d) Mining

Year		Jan	Feb	Mar	Apr	May	Jun	Jul	Aug	Sep	Oct	Nov	Dec	Ave
2011	Index													
	%													
2012	Index													
	%													

e) Agriculture, forestry and fishing

Year		Jan	Feb	Mar	Apr	May	Jun	Jul	Aug	Sep	Oct	Nov	Dec	Ave
2011	Index													
	%													
2012	Index									
	%										

Figure 1: Manufacturing year-on-year percentage change

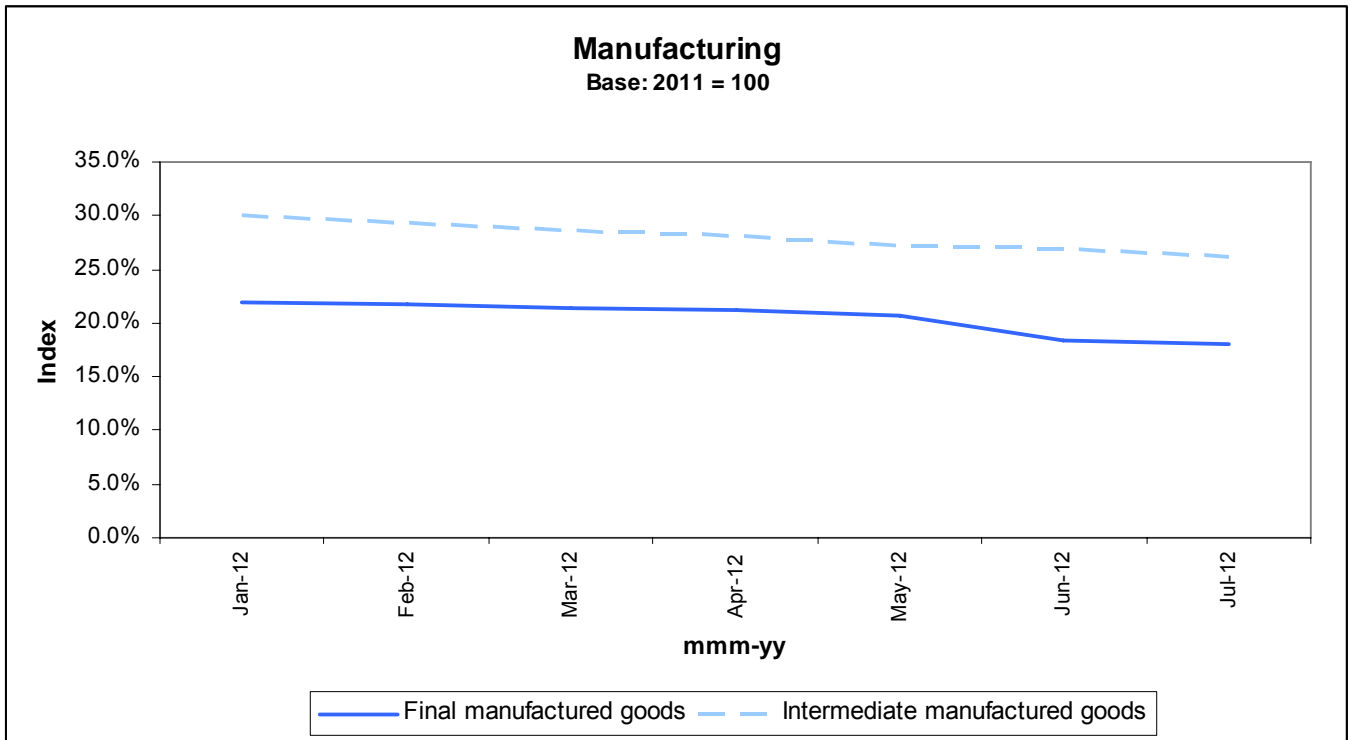


Figure 2: Manufacturing month-on-month percentage change

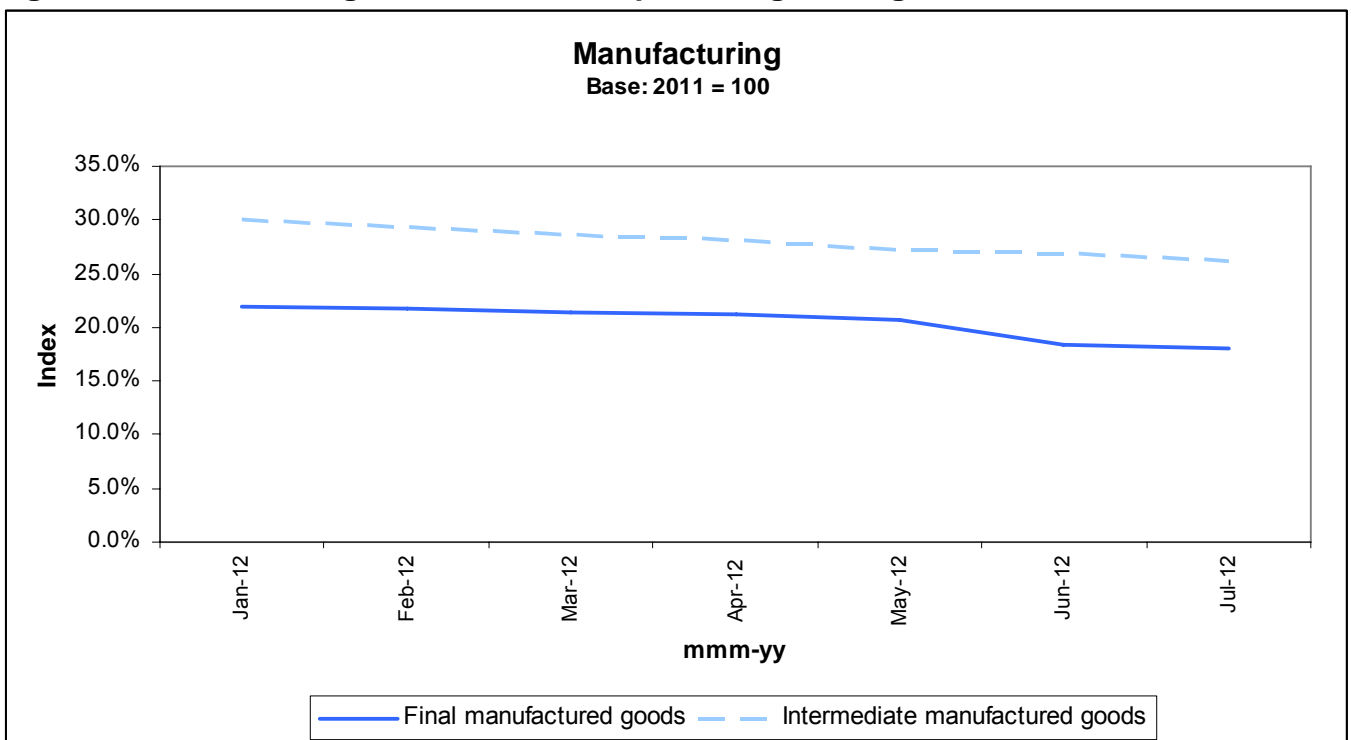


Table 1: PPI for final manufactured goods

Group	Weight	Index			Percentage change	
		Aug-11	July-12	Aug-12	M-o-M	Y-o-Y
Final manufactured goods	100.00					
Food products, beverages and tobacco products	31.77					
Food products	22.65					
Meat, fish, fruit, vegetables ,oils and fats	8.08					
Meat and meat products	3.68					
Fish and fish products	1.43					
Fruit and vegetables	2.72					
Oils and fats	0.25					
Dairy products	2.60					
Grain mill products, starches and starch products, animal feeds	3.18					
Grain mill products	1.91					
Starches, starch products and animal feeds	1.27					
Other food products	8.79					
Bakery products	5.76					
Sugar and other food products	3.03					
Beverages	7.52					
Tobacco products	1.60					
Textiles, clothing and footwear	5.02					
Textiles	0.31					
Clothing	4.11					
Footwear	0.60					
Wood and paper products	8.27					
Paper and printed products	7.99					
Other wood products	0.28					
Coke, petroleum, chemical, rubber and plastic products	19.73					
Coal and petroleum products	9.28					
Petrol	2.80					
Diesel	3.08					
Chemical products	9.24					
Rubber and plastic products	1.21					
Non-metallic mineral products	4.83					
Metals, machinery, equipment and computing equipment	14.59					
Structural and fabricated metal products	6.71					
General and special purpose machinery	6.85					
Household appliances and office machinery	1.04					
Electrical machinery and apparatus and subcomponents	4.44					
Transport equipment	9.26					
Motor vehicles	4.42					
Bodies for motor vehicles	0.88					
Parts and accessories for motor vehicles and their engines	3.96					
Furniture and other manufacturing	2.09					

Contributions – Final manufactured goods (changes)

Figure 3: Contributions to the annual percentage change in PPI for final manufactured goods

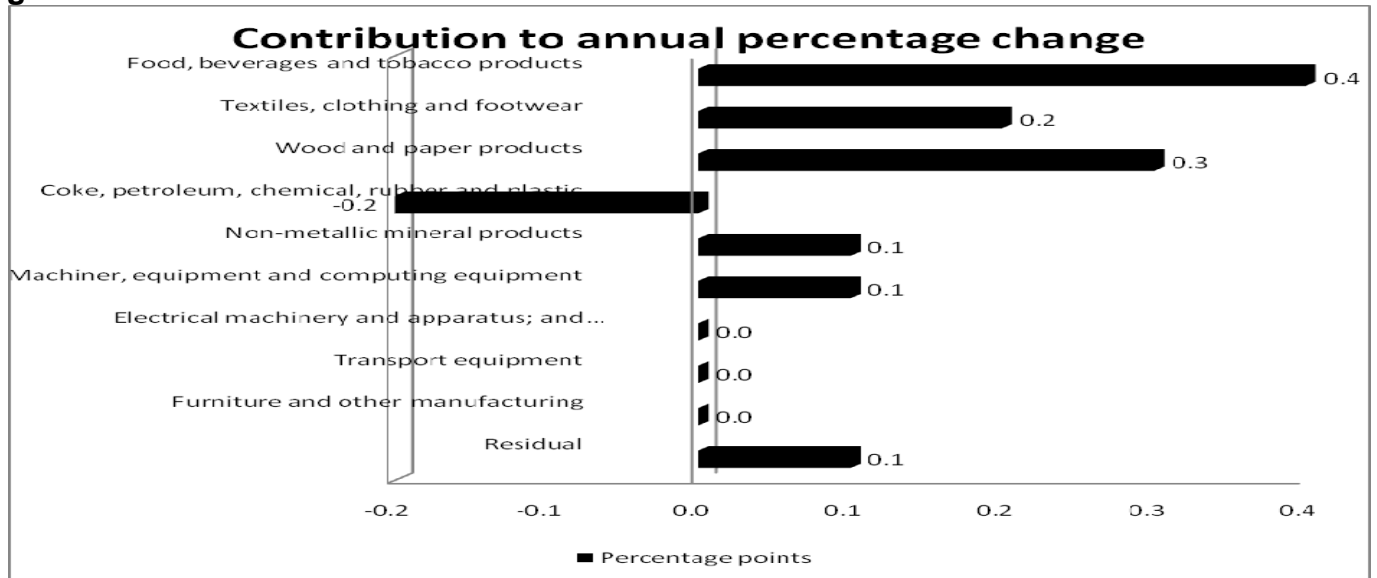


Figure 4: Contributions to the monthly percentage change in PPI for final manufactured goods

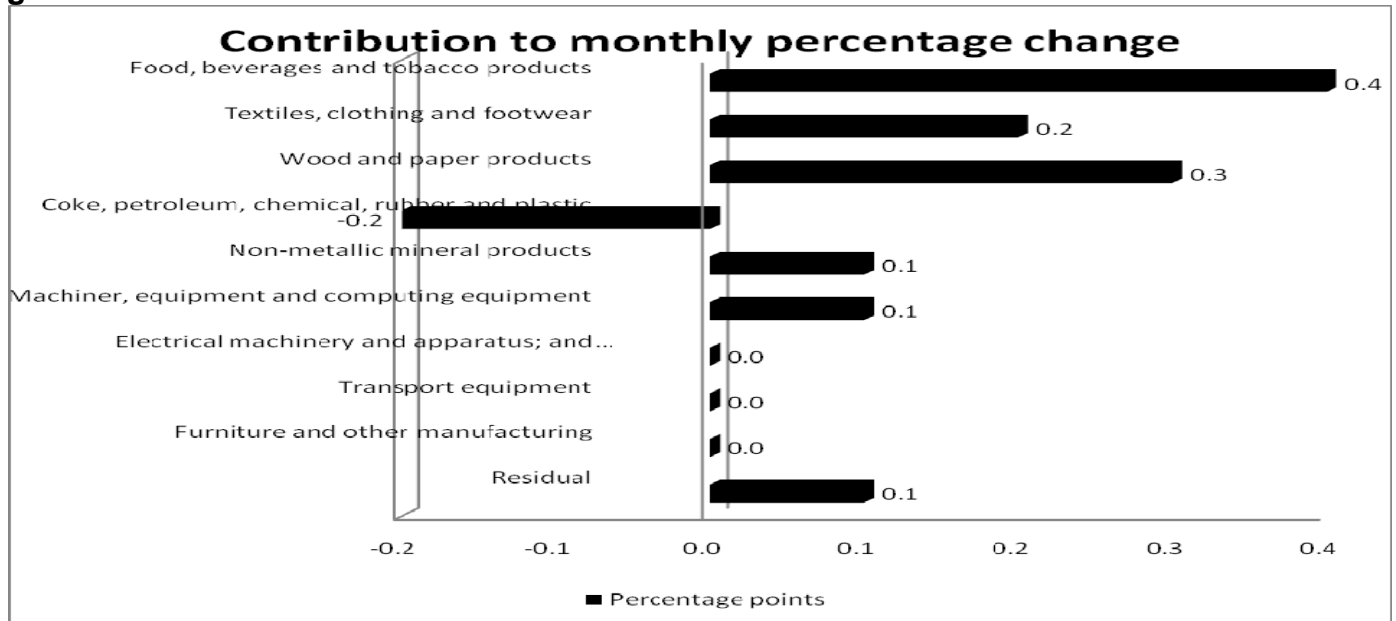


Table 2: PPI for intermediate manufactured goods (no change)

Group	Weight	Index			Percentage change	
		Aug-11	July-12	Aug-12	M-o-M	Y-o-Y
Intermediate manufactured goods	100.00					
Textiles and leather goods	7.49					
Sawmilling and wood	13.34					
Chemicals, rubber and plastic products	37.97					
Basic and other chemicals	10.65					
Plastic products	25.22					
Rubber products	2.10					
Glass and glass products	3.63					
Basic and fabricated metals	35.81					
Basic iron and steel	20.15					
Basic precious and non - ferrous metals	15.66					
Recycling and manufacturing n.e.c.	1.76					

Contributions – Intermediate manufactured goods

Figure 5: Contributions to the monthly percentage change in PPI for intermediate manufactured goods

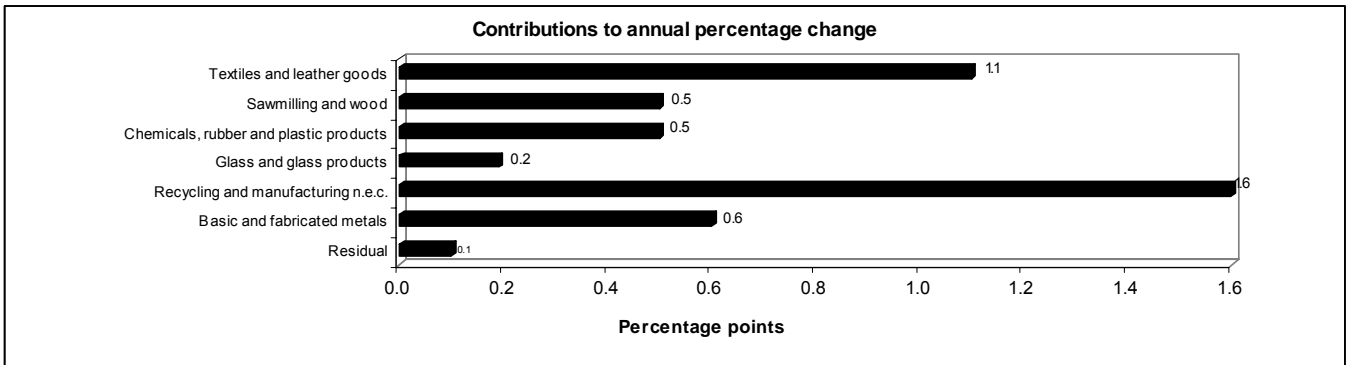


Figure 6: Contributions to the monthly percentage change in PPI for intermediate manufactured goods

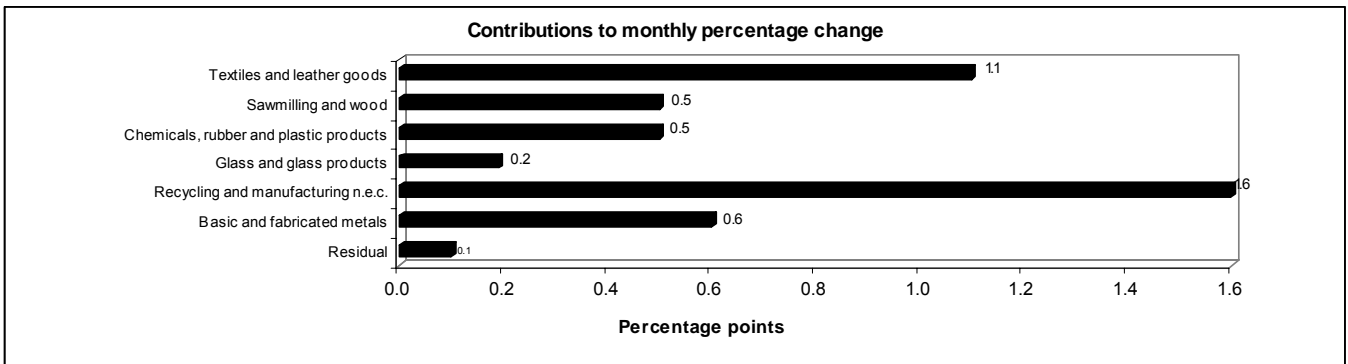


Table 3: PPI for electricity and water (no change)

Group	Weight	Index			Percentage change	
		Aug-11	July-12	Aug-12	M-o-M	Y-o-Y
Electricity and water	100.00					
Electricity	86.52					
Water	13.48					

Contributions – Electricity and water

Figure 7: Contributions to the monthly percentage change in PPI for electricity and water

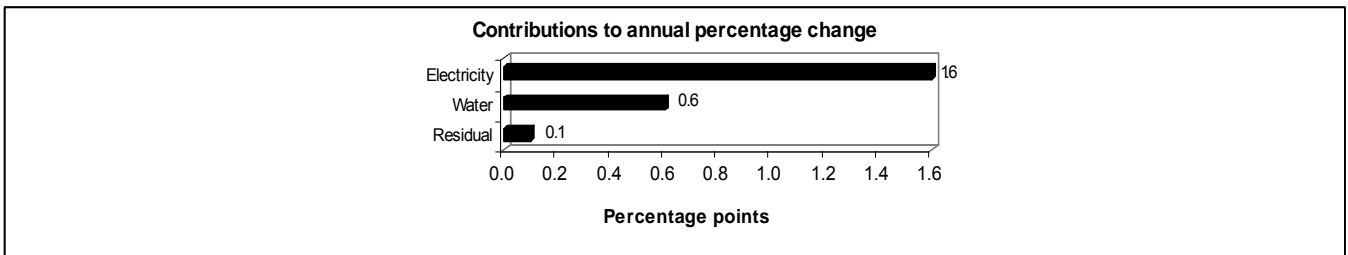


Figure 8: Contributions to the monthly percentage change in PPI for electricity and water

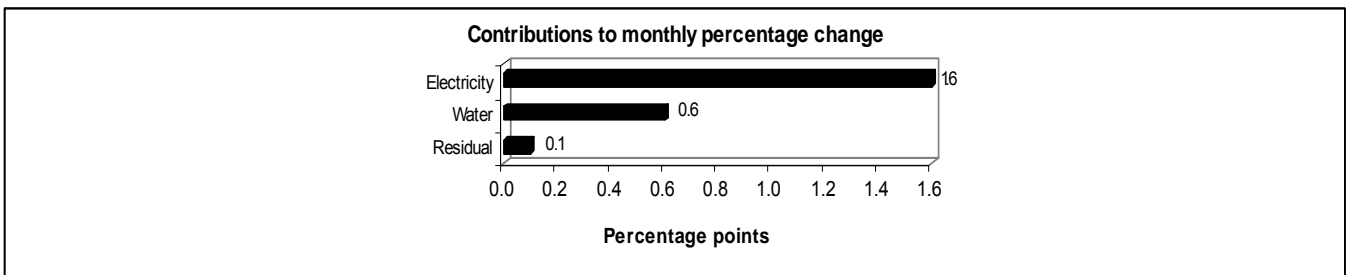


Table 4: PPI for mining (no change)

Group	Weight	Index			Percentage change	
		Aug-11	July-12	Aug-12	M-o-M	Y-o-Y
Mining	100.00					
Coal and gas	22.90					
Gold and other metal ores	25.74					
Non-ferrous metal ores	44.94					
Stone quarrying, clay and diamonds	6.42					

Contributions – Mining

Figure 9: Contributions to the monthly percentage change in PPI for mining

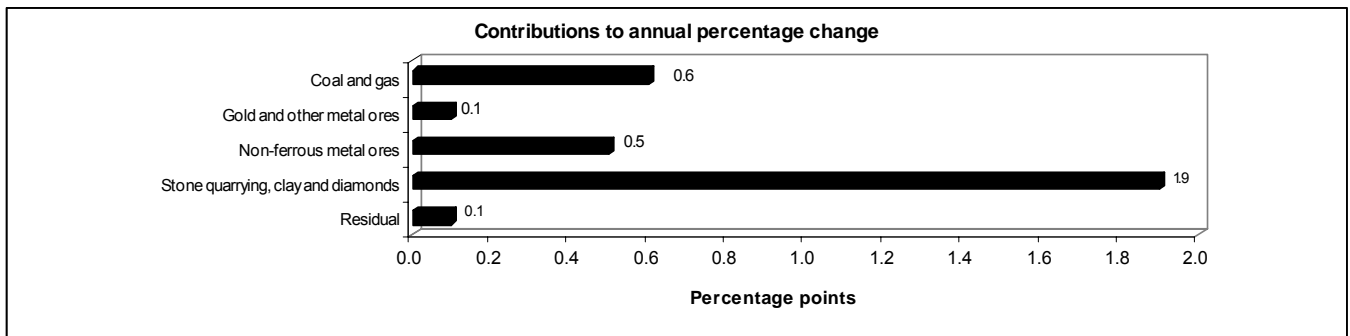


Figure 10: Contributions to the monthly percentage change in PPI for mining

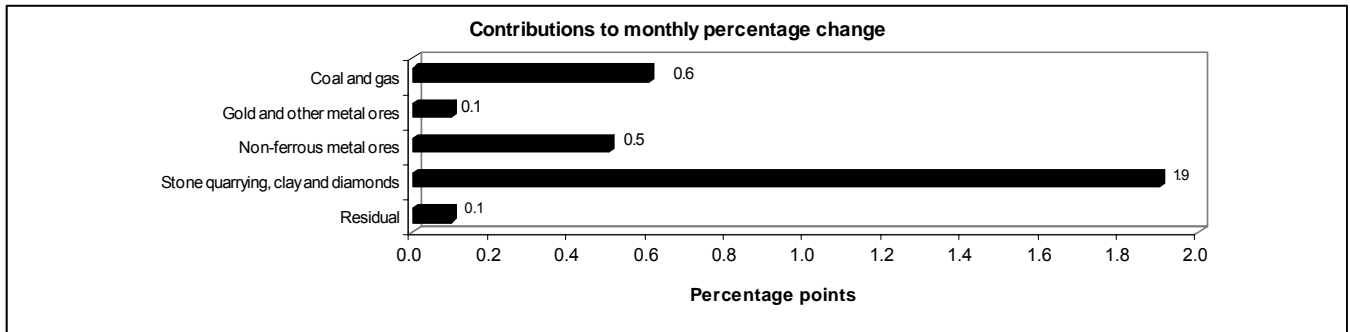


Table 5: Agriculture, forestry and fishing (change of name of index)

Group	Weight	Index			Percentage change	
		Aug-11	July-12	Aug-12	M-o-M	Y-o-Y
Agriculture, forestry and fishing	100.00					
Agriculture	78.44					
Products of crops and horticulture	38.93					
Cereals and other crops	17.93					
Fruit and vegetables	21.00					
Live animals and animal products	39.51					
Live animals	28.58					
Milk and eggs	9.91					
Other animal products	1.02					
Forestry	17.32					
Fishing	4.24					

Contributions – Agriculture, forestry and fishing

Figure 11: Contributions to the monthly percentage change in PPI for agriculture, forestry and fishing

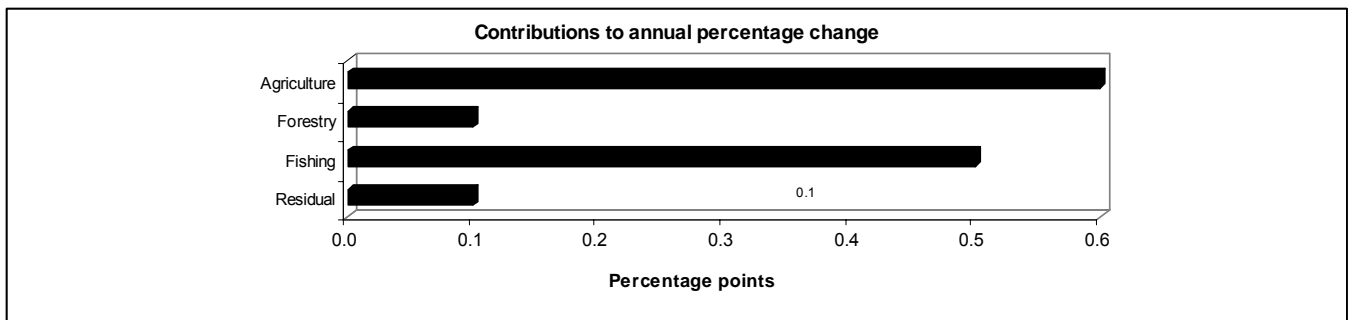
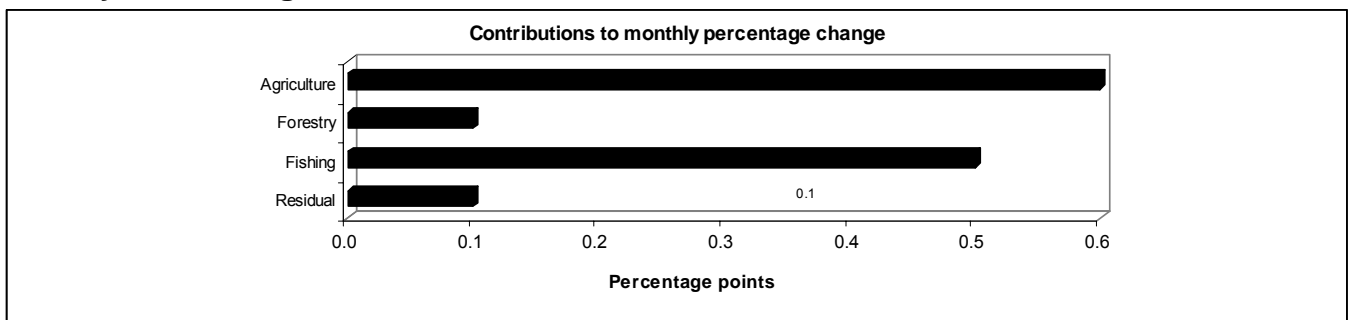


Figure 12: Contributions to the monthly percentage change in PPI for agriculture, forestry and fishing



Explanatory notes

Purpose and results of the survey

The monthly survey of prices of commodities in domestic output (including exports) covers samples of manufacturers and exporters in the South African economy. The results of the survey are used to compile the Producer Price Indices (PPI) for final manufactured goods, intermediate manufactured goods, electricity and water, mining, and agriculture, forestry and fishing, which indicate changes in producer prices of locally, produced commodities (including exports).

Scope of the survey

The indices are compiled on a gross industry basis, i.e. each index relates to those articles, which are produced, imported and exported by the designated industries of the South African economy. Actual transaction prices are collected from manufacturers and exporters.

Classification

Product are classified according to the relevant Central Product Classification (CPC) version 2 and at industry level are classified using Standard Industrial Classification (SIC) version 5.

The CPC is used to identify products aggregated according to SIC, which represents industry.

The SIC is based on the 1990 *International Standard Industrial Classification of all Economic Activities (ISIC)* with suitable adaptations for local conditions.

Survey methodology and design

The survey is conducted by mail, fax and telephone. A purposive sample of approximately 1 300 enterprises was selected and approximately 3000 prices are collected in the survey monthly.

Statistical unit

Special Data Dissemination Standard (SDDS) of the International Monetary Fund (IMF)

South Africa's data dissemination practices are assessed against the IMF's Special Data Dissemination Standard (SDDS). A detailed description of the SDDS can be found on the IMF's Dissemination Standards Bulletin Board on the internet at <http://dsbb.imf.org>.

The SDDS prescribes two to four monitorable elements or good practice that can be observed, or monitored, by users of statistics. These include coverage, periodicity and timeliness, and access to a scheduled release calendar. The SDDS in essence sets standards for the disclosure and transparency of statistics.

South Africa subscribed to the SDDS in 2 August 1996 and posted its metadata as of 27 September 1996. South Africa has met the SDDS specifications for the coverage, periodicity and timeliness of the data, and for the dissemination of advanced release calendars since 18 September 2000.

Stats SA is responsible for compiling and disseminating data on the producer price index, national accounts, government accounts, industry-based statistics, social statistics, the producer price index, consumer price index, labour market and population statistics.

Reports on Observance of Standards and Codes (ROSC) of the International Monetary Fund (IMF)

The IMF has worked on producing ROSC as a step to strengthen the international financial system. The objectives of ROSC include the promotion of increased transparency, and the implementation of internationally accepted standards and codes.

The data dissemination module of the ROSC provides a summary of South Africa's practices on the coverage, periodicity and timeliness of the data categories specified in the IMF's SDDS, and on the practices on the provision of advance release calendars for the data. The ROSC is complemented by an assessment of the quality of the Producer Price Index, using the Data Quality Assessment Framework (DQAF) as developed by the IMF's Statistics Department.

The DQAF assess data quality in terms of -

- ◆ Prerequisites of quality;
- ◆ Integrity;
- ◆ Methodological soundness;
- ◆ Accuracy and reliability;
- ◆ Serviceability; and
- ◆ Accessibility

For South Africa's compliance and performance on the quality of data see <http://www.imf.org/external/np/rosc/rosc.asp>.

Symbols and abbreviations

- GDP Gross Domestic Product
- IT Income Tax
- SARS South African Revenue Services
- SIC Standard Industrial Classification of all Economic Activities
- Stats SA Statistics South Africa
- VAT Value added tax
- .. Figures not available
- * Revised figures

Methodological notes

Base year The base year of the Producer Price Index (PPI) is 2011 = 100.

Sources of basket and weights The new basket of indicator products for domestically produced commodities was compiled through use of several information sources. The information sources used to select relevant indicator products in the different industries are indicated in table A.

At industry level, value added was used to determine industry weights. At product level, sales values from table A were used to obtain the proportions.

Table A

Industry	Industry--level weights	Product-level weights
Agriculture, fishing and forestry	National Accounts 2010	Agriculture: Gross Income from Agricultural products (2010). Department of Agriculture Forestry and Fisheries. Fishing: Census of Agriculture, Forestry and Fishing (2007). Statistics South Africa. Forestry: Report on Commercial Timber Resources and Primary Roundwood Processing in South Africa (2008/09). Department of Agriculture, Forestry and Fisheries.
Mining	National Accounts 2010	South African Mining Industry Annual Commodity Summary (2010). Department of Mineral Resources.
Manufacturing	National Accounts 2010	Large Sample Survey (2008). Statistics South Africa.
Water, gas and electricity	National Accounts 2010	Water: Department of Water Affairs 2010.

Classification Product are classified according to the relevant Central Product Classification (CPC) version 2 and at industry level are classified using Standard Industrial Classification (SIC) version 5.

The CPC is used to identify products aggregated according to SIC, which represents industry.

The SIC is based on the 1990 *International Standard Industrial Classification of all Economic Activities (ISIC)* with suitable adaptations for local conditions.

Price reference period Price information refers to the first seven days of the relevant month, with the exception of electricity, petroleum, mining and most of the agricultural products, where an average price is obtained.

Calculation of elementary indices

Price relatives are calculated for each product per respondent by dividing the current prices by the previously quoted price. The price relative for each product is calculated by means of the geometric mean of the price relatives for each respondent. This price relative for each product is then applied to the product index for the previous month in order to obtain a product index for the relevant month.

Calculation of higher-level indices

Higher level indices are calculated by weighting product indices with the relevant product weight, according to each group's weighting structure, using the modified Laspeyres index formula.

Reliability of estimates

Inaccuracies may occur because of imperfections in reporting by establishment (branch) and errors made in collection and processing of the data. Inaccuracies of this kind are referred to as non-sampling errors. Every effort is made to reduce non-sampling errors to a minimum by careful designing the questionnaires, editing data and efficient operating procedures.

Related publications

Users may also wish to refer to the following publications, which are available from Stats SA -

- Bulletin of Statistics; and
- SA Statistics.

Unpublished statistics

In some cases, Stats SA can also make available information, which is not published. This information can be made available in one or more of the following ways: computer printout, diskette or CD. Generally, a fee is levied for providing unpublished information.

Glossary**Contributions**

The monthly (annual) contribution of a specific product or group of products to the specific PPI is calculated by multiplying the weight of this product or group of products with the monthly (annual) change in the index for this product or group of products, divided by the index for the specific index, for the previous month (year).

Annual inflation rate

The annual inflation rate per specific PPI is the change in the specific PPI for all items of the relevant month of the current year compared with the specific PPI for all items of the same month in the previous year expressed as a percentage.

Annual percentage change

The annual percentage change is the change in the index of the relevant month of the current year compared with the index of the same month in the previous year expressed as a percentage.

Average annual inflation rate

The average annual inflation rate is the change in the average specific PPI for all items of one year compared with the average specific PPI for all items of the previous year expressed as a percentage.

Average annual percentage change

The average annual percentage change is the change in the average index of one year compared with the average index of the previous year expressed as a percentage.

Monthly percentage change

The monthly percentage change is the change in the specific PPI of the relevant month compared with the specific PPI of the previous month expressed as a percentage.

General information

Stats SA publishes approximately 300 different statistical releases each year. It is not economically viable to produce them in more than one of South Africa's eleven official languages. Since the releases are used extensively, not only locally but also by international economic and social-scientific communities, Stats SA releases are published in English only.

Stats SA has copyright on this publication. Users may apply the information as they wish, provided that they acknowledge Stats SA as the source of the basic data wherever they process, apply, utilise, publish or distribute the data; and also that they specify that the relevant application and analysis (where applicable) result from their own processing of the data.

Advance release calendar

An advance release calendar is disseminated on www.statssa.gov.za

Stats SA products

A complete set of Stats SA publications is available at the Stats SA Library and the following libraries:

- National Library of South Africa, Pretoria Division
- National Library of South Africa, Cape Town Division
- Natal Society Library, Pietermaritzburg
- Library of Parliament, Cape Town
- Bloemfontein Public Library
- Johannesburg Public Library
- Eastern Cape Library Services, King William's Town
- Central Regional Library, Polokwane
- Central Reference Library, Nelspruit
- Central Reference Collection, Kimberley
- Central Reference Library, Mmabatho

Stats SA also provides a subscription service.

Electronic services

A large range of data are available via on-line services, diskette and computer printouts. For more details about our electronic data services, contact (012) 310 8600/8390/8351/4892/8496/8095.

Forthcoming issue	Issue	Expected release date
--------------------------	--------------	------------------------------

You can visit us on the internet at: www.statssa.gov.za

Enquiries

Telephone number:	(012) 310 8600/8390/8351/4892/8496/8095 (user information services)
	(012) 310 8920/8170 (technical enquiries – Patrick Kelly and Marais Kleu)
	(012) 310 8161 (orders)
	(012) 310 8490 (library)

Fax number:	(012) 310 8332 (technical enquiries)
-------------	--------------------------------------

Email address:	Patrickke@statssa.gov.za (technical enquiries)
	Maraisk@statssa.gov.za (technical enquiries)
	Info@statssa.gov.za (user information services)
	distribution@statssa.gov.za (orders)

Postal address:	Private Bag X44, Pretoria, 0001
-----------------	---------------------------------

Produced by Stats SA